

Data Path : Z:\pestpcbsrv\HPCHEM1\ECD\_L\Data\PL030821\  
 Data File : PL065140.D  
 Signal(s) : Signal #1: ECD1A.ch Signal #2: ECD2B.ch  
 Acq On : 08 Mar 2021 12:21  
 Operator : AR\AJ  
 Sample : I.BLK  
 Misc :  
 ALS Vial : 2 Sample Multiplier: 1

Instrument :  
 ECD\_L  
 ClientSampleId :  
 I.BLK

Integration File signal 1: autoint1.e  
 Integration File signal 2: autoint2.e  
 Quant Time: Mar 08 13:15:52 2021  
 Quant Method : Z:\pestpcbsrv\HPCHEM1\ECD\_L\methods\PL030521.M  
 Quant Title : GC Extractables  
 QLast Update : Fri Mar 05 02:26:14 2021  
 Response via : Initial Calibration  
 Integrator: ChemStation

Volume Inj. : 1 µl  
 Signal #1 Phase : ZB-MR2 Signal #2 Phase: ZB-MR1  
 Signal #1 Info : 30M x 0.32mm x0.2 Signal #2 Info : 30M x 0.32mm x0.5µm

Compound	RT#1	RT#2	Resp#1	Resp#2	ng/ml	ng/ml
-----						
System Monitoring Compounds						
1) SA Tetrachlo...	3.422	4.097	58341256	47197263	19.841	19.006
28) SA Decachlor...	8.138	9.250	49469136	40449650	17.826	18.415

Target Compounds

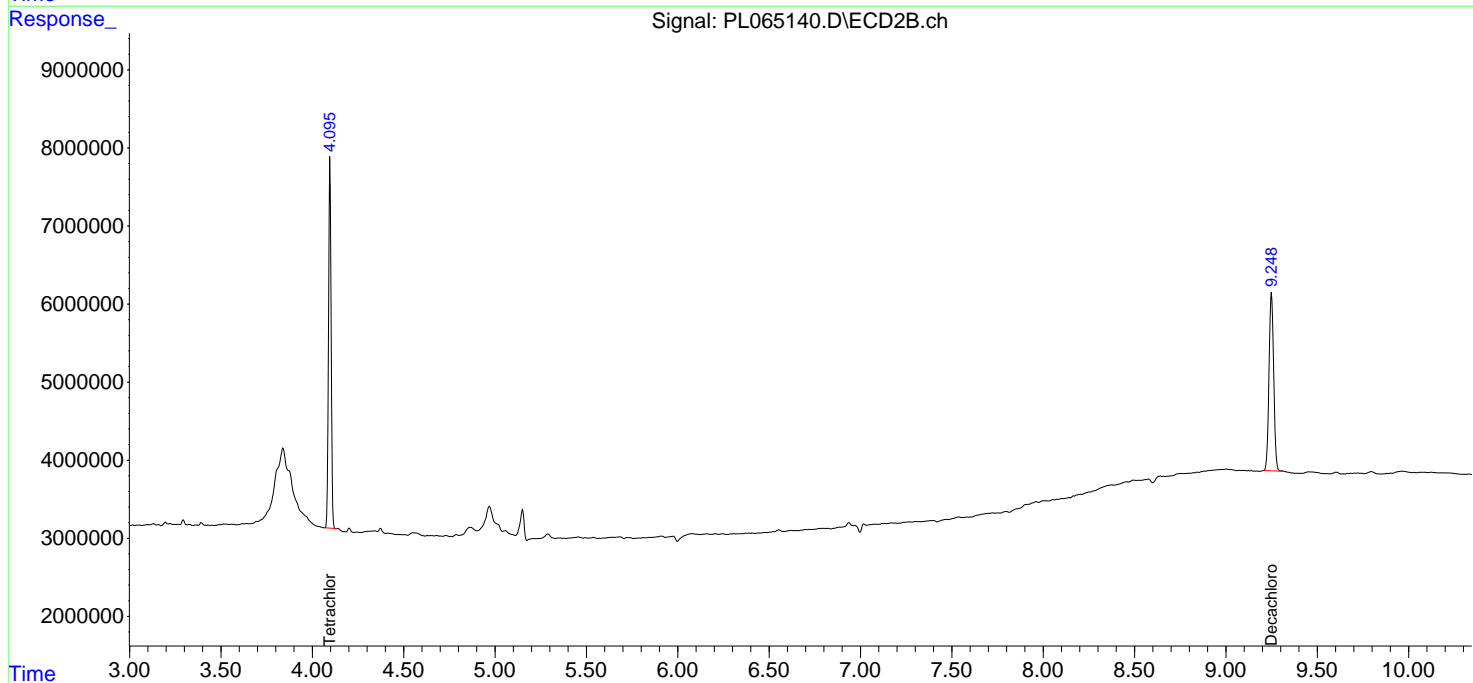
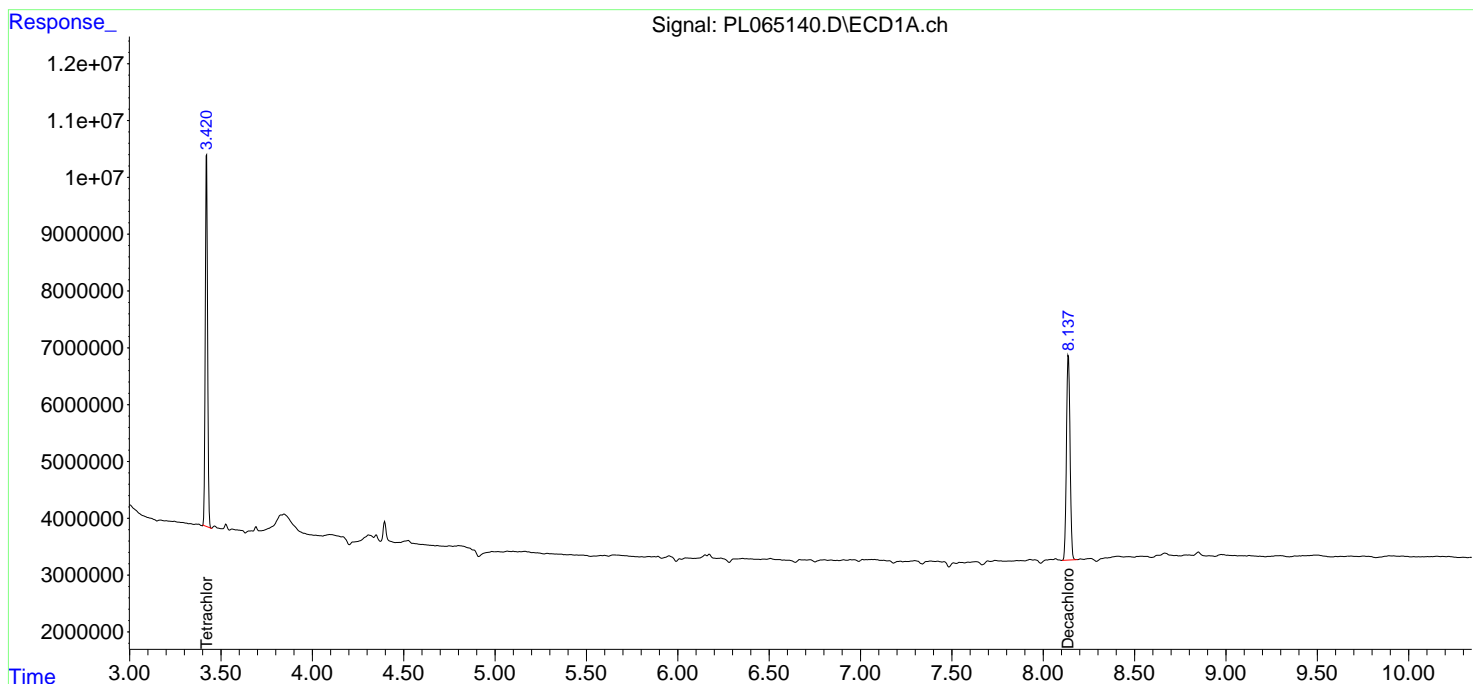
(f)=RT Delta > 1/2 Window (#)=Amounts differ by > 25% (m)=manual int.

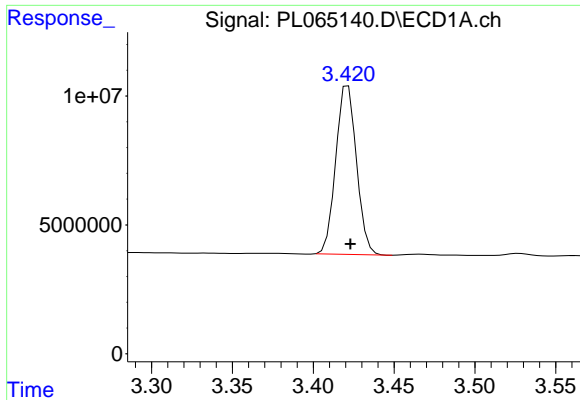
Data Path : Z:\pestpcbsrv\HPCHEM1\ECD\_L\Data\PL030821\  
 Data File : PL065140.D  
 Signal(s) : Signal #1: ECD1A.ch Signal #2: ECD2B.ch  
 Acq On : 08 Mar 2021 12:21  
 Operator : AR\AJ  
 Sample : I.BLK  
 Misc :  
 ALS Vial : 2 Sample Multiplier: 1

Instrument :  
 ECD\_L  
 ClientSampled :  
 I.BLK

Integration File signal 1: autoint1.e  
 Integration File signal 2: autoint2.e  
 Quant Time: Mar 08 13:15:52 2021  
 Quant Method : Z:\pestpcbsrv\HPCHEM1\ECD\_L\methods\PL030521.M  
 Quant Title : GC Extractables  
 QLast Update : Fri Mar 05 02:26:14 2021  
 Response via : Initial Calibration  
 Integrator: ChemStation

Volume Inj. : 1 µl  
 Signal #1 Phase : ZB-MR2 Signal #2 Phase: ZB-MR1  
 Signal #1 Info : 30M x 0.32mm x0.2 Signal #2 Info : 30M x 0.32mm x0.5µm

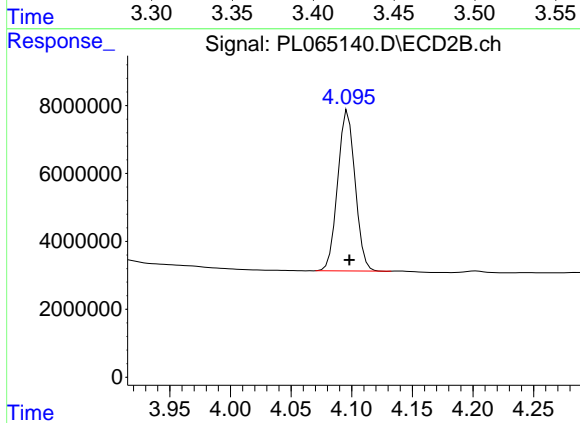




#1 Tetrachloro-m-xylene

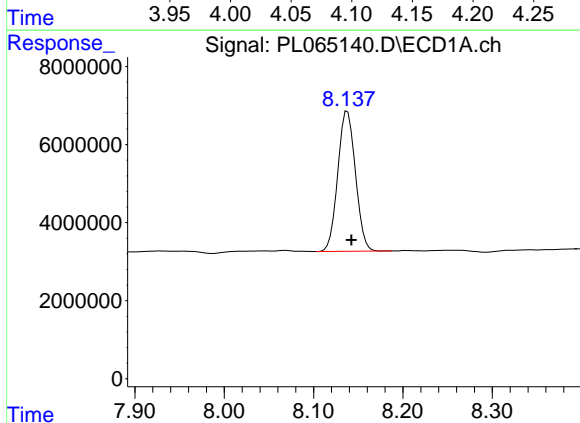
R.T.: 3.422 min  
 Delta R.T.: -0.001 min  
 Response: 58341256  
 Conc: 19.84 ng/ml

Instrument :  
 ECD\_L  
 ClientSampled :  
 I.BLK



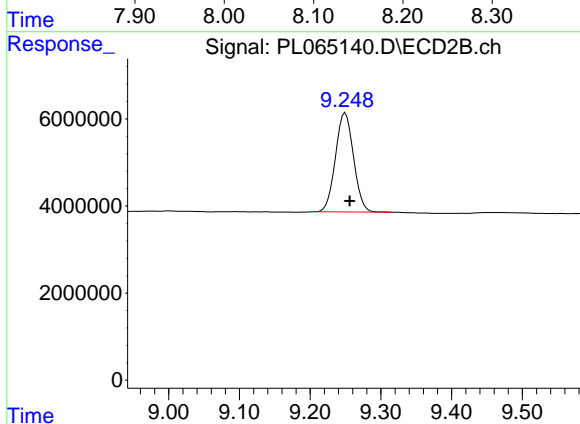
#1 Tetrachloro-m-xylene

R.T.: 4.097 min  
 Delta R.T.: -0.001 min  
 Response: 47197263  
 Conc: 19.01 ng/ml



#28 Decachlorobiphenyl

R.T.: 8.138 min  
 Delta R.T.: -0.004 min  
 Response: 49469136  
 Conc: 17.83 ng/ml



#28 Decachlorobiphenyl

R.T.: 9.250 min  
 Delta R.T.: -0.006 min  
 Response: 40449650  
 Conc: 18.42 ng/ml