

Data Path : Z:\pestpcbsrv\HPCHEM1\ECD\_L\Data\PL030821\  
 Data File : PL065143.D  
 Signal(s) : Signal #1: ECD1A.ch Signal #2: ECD2B.ch  
 Acq On : 08 Mar 2021 15:14  
 Operator : AR\AJ  
 Sample : PB135034BS  
 Misc :  
 ALS Vial : 15 Sample Multiplier: 1

Instrument :  
 ECD\_L  
 ClientSampleId :  
 PB135034BS

Integration File signal 1: autoint1.e  
 Integration File signal 2: autoint2.e  
 Quant Time: Mar 09 04:07:07 2021  
 Quant Method : Z:\pestpcbsrv\HPCHEM1\ECD\_L\methods\PL030521.M  
 Quant Title : GC Extractables  
 QLast Update : Fri Mar 05 02:26:14 2021  
 Response via : Initial Calibration  
 Integrator: ChemStation

Volume Inj. : 1 µl  
 Signal #1 Phase : ZB-MR2 Signal #2 Phase: ZB-MR1  
 Signal #1 Info : 30M x 0.32mm x0.2 Signal #2 Info : 30M x 0.32mm x0.5µm

Compound	RT#1	RT#2	Resp#1	Resp#2	ng/ml	ng/ml
-----						
System Monitoring Compounds						
1) SA Tetrachlo...	3.422	4.097	69855796	58422462	23.757	23.527
28) SA Decachlor...	8.140	9.251	62892503	48935333	22.663	22.279
Target Compounds						
2) A alpha-BHC	3.854	4.499	258.7E6	189.6E6	54.888	55.695
3) MA gamma-BHC...	4.134	4.791	236.6E6	175.7E6	54.676	55.608
4) MA Heptachlor	4.431	5.302	217.2E6	168.3E6	49.381	49.789
5) MB Aldrin	4.675	5.611	206.1E6	149.5E6	50.474	50.598
6) B beta-BHC	4.385	4.970	94140827	79743085	50.403	52.154
7) B delta-BHC	4.586	5.191	231.1E6	161.9E6	52.920	53.466
8) B Heptachlo...	5.115	6.006	193.8E6	140.6E6	50.981	58.062
9) A Endosulfan I	5.451	6.368	176.6E6	127.3E6	49.382	50.152
10) B gamma-Chl...	5.341	6.242	193.8E6	140.2E6	49.499	50.010
11) B alpha-Chl...	5.398	6.314	190.1E6	139.5E6	49.601	50.474
12) B 4,4'-DDE	5.563	6.471	173.1E6	125.4E6	48.164	50.173
13) MA Dieldrin	5.692	6.629	181.6E6	129.1E6	49.108	50.415
14) MA Endrin	5.946	6.850	148.2E6	95250306	43.169	45.088
15) B Endosulfa...	6.220	7.066	156.6E6	109.9E6	49.890	51.804
16) A 4,4'-DDD	6.077	6.970	145.0E6	103.5E6	48.718	51.279
17) MA 4,4'-DDT	6.315	7.269	115.3E6	85822083	41.342	43.787
18) B Endrin al...	6.387	7.191	133.8E6	97229830	52.176	54.956
19) B Endosulfa...	6.600	7.415	154.7E6	106.6E6	45.765	48.962
20) A Methoxychlor	6.863	7.731	64475709	49177387	40.841	44.369
21) B Endrin ke...	7.086	7.894	172.3E6	113.4E6	49.913	53.036
22) Mirex	7.269	8.343	126.8E6	79668622	47.302	47.105
-----						

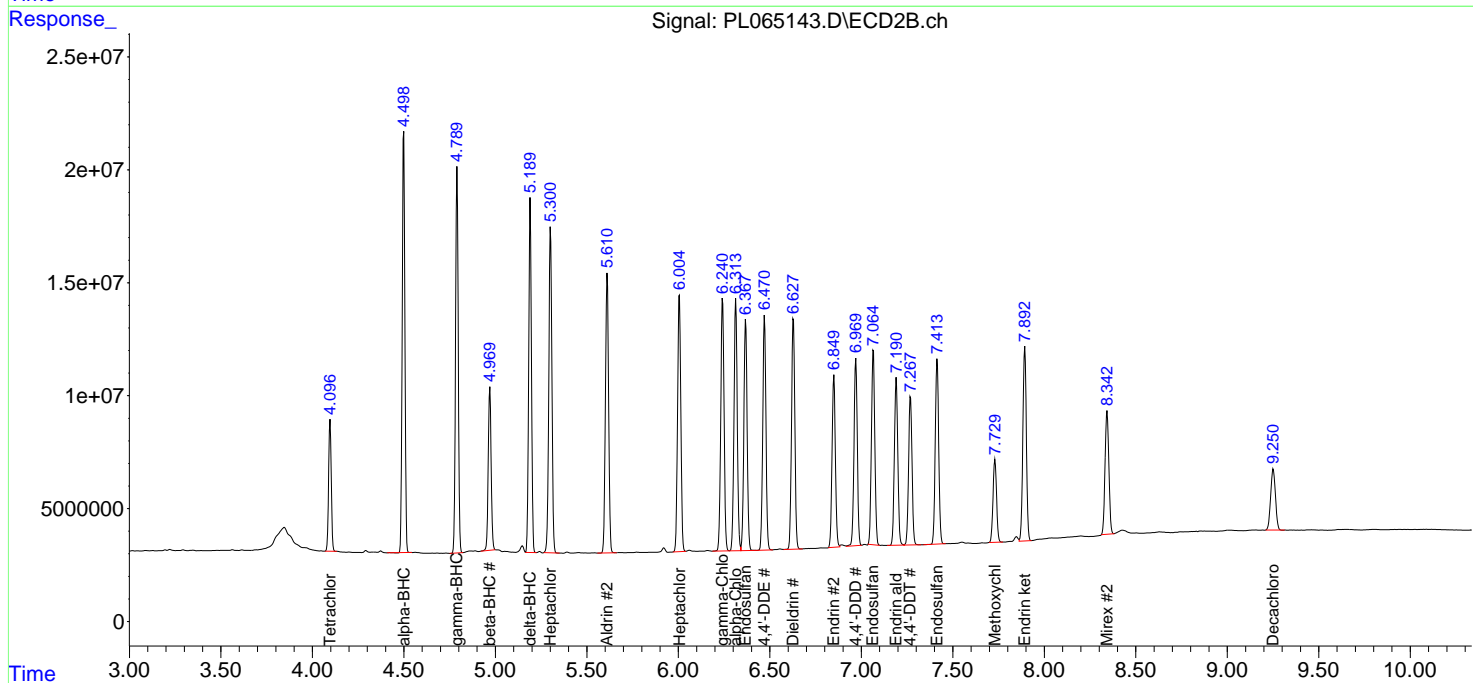
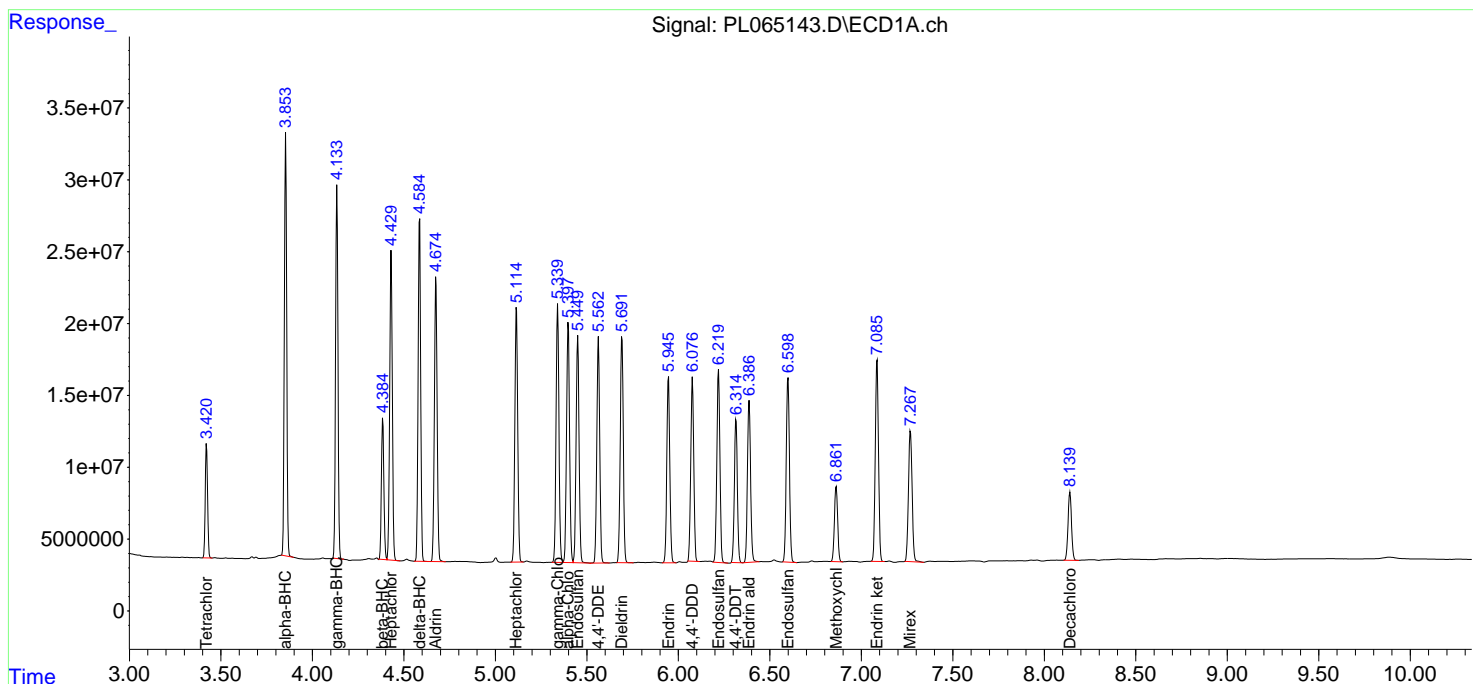
(f)=RT Delta > 1/2 Window (#)=Amounts differ by > 25% (m)=manual int.

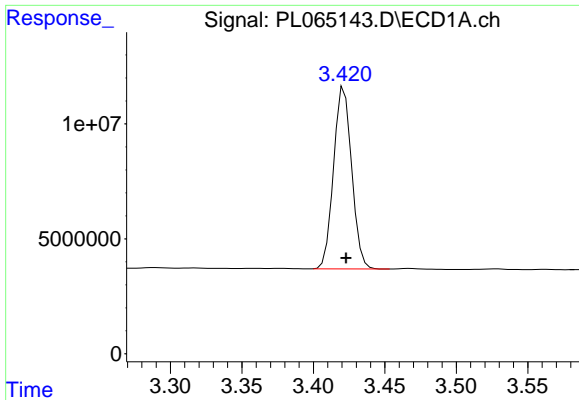
Data Path : Z:\pestpcbsrv\HPCHEM1\ECD\_L\Data\PL030821\  
 Data File : PL065143.D  
 Signal(s) : Signal #1: ECD1A.ch Signal #2: ECD2B.ch  
 Acq On : 08 Mar 2021 15:14  
 Operator : AR\AJ  
 Sample : PB135034BS  
 Misc :  
 ALS Vial : 15 Sample Multiplier: 1

Instrument :  
 ECD\_L  
 ClientSampled :  
 PB135034BS

Integration File signal 1: autoint1.e  
 Integration File signal 2: autoint2.e  
 Quant Time: Mar 09 04:07:07 2021  
 Quant Method : Z:\pestpcbsrv\HPCHEM1\ECD\_L\methods\PL030521.M  
 Quant Title : GC Extractables  
 QLast Update : Fri Mar 05 02:26:14 2021  
 Response via : Initial Calibration  
 Integrator: ChemStation

Volume Inj. : 1 µl  
 Signal #1 Phase : ZB-MR2 Signal #2 Phase: ZB-MR1  
 Signal #1 Info : 30M x 0.32mm x0.2 Signal #2 Info : 30M x 0.32mm x0.5µm

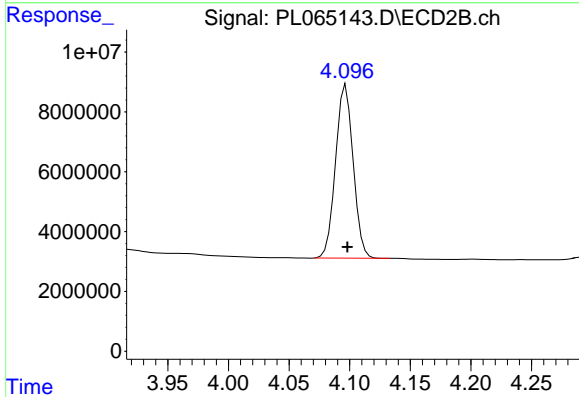




#1 Tetrachloro-m-xylene

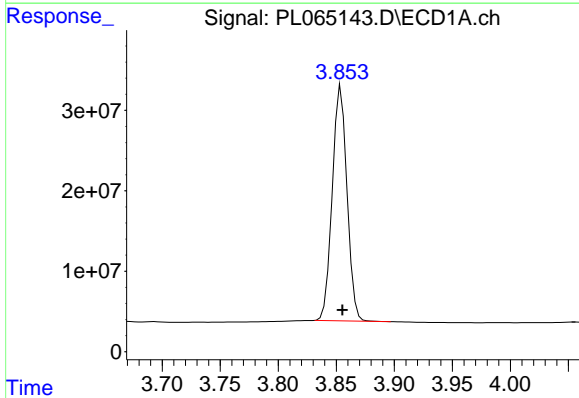
R.T.: 3.422 min  
 Delta R.T.: -0.001 min  
 Response: 69855796  
 Conc: 23.76 ng/ml

Instrument :  
 ECD\_L  
 ClientSampleId :  
 PB135034BS



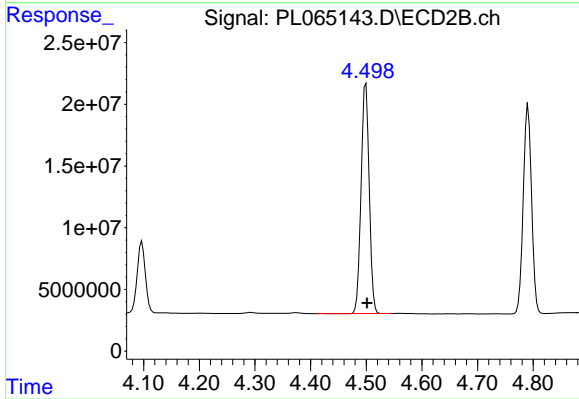
#1 Tetrachloro-m-xylene

R.T.: 4.097 min  
 Delta R.T.: -0.001 min  
 Response: 58422462  
 Conc: 23.53 ng/ml



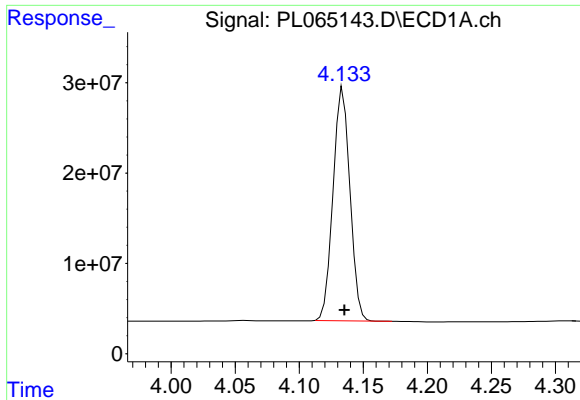
#2 alpha-BHC

R.T.: 3.854 min  
 Delta R.T.: -0.001 min  
 Response: 258733598  
 Conc: 54.89 ng/ml



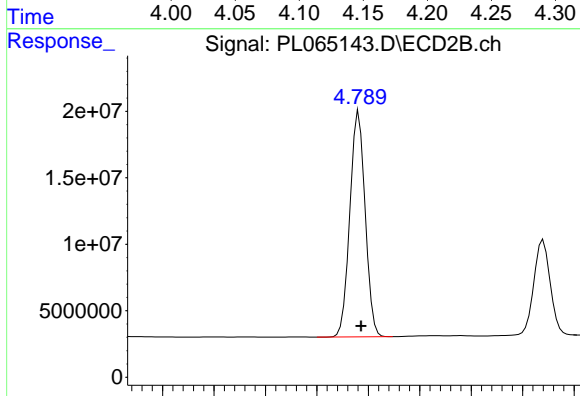
#2 alpha-BHC

R.T.: 4.499 min  
 Delta R.T.: -0.002 min  
 Response: 189619378  
 Conc: 55.69 ng/ml

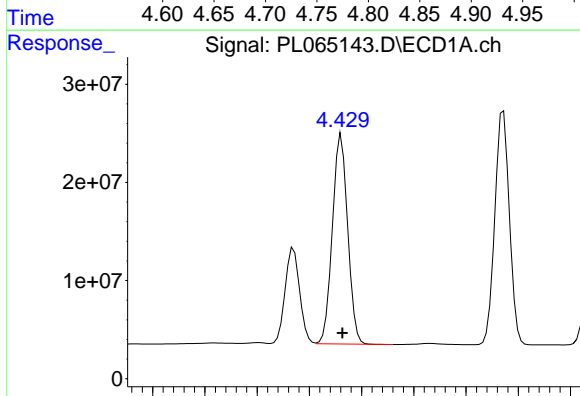


#3 gamma-BHC (Lindane)  
 R.T.: 4.134 min  
 Delta R.T.: 0.000 min  
 Response: 236648592  
 Conc: 54.68 ng/ml

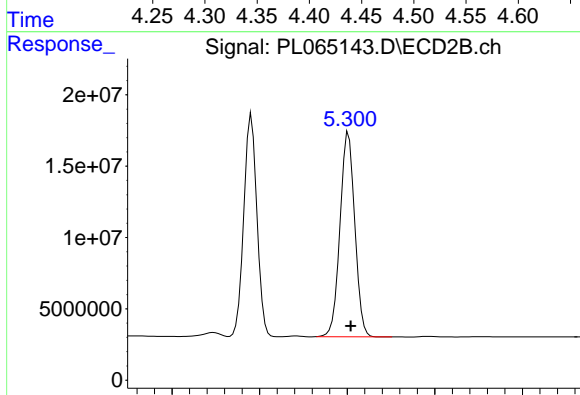
Instrument :  
 ECD\_L  
 ClientSampleId :  
 PB135034BS



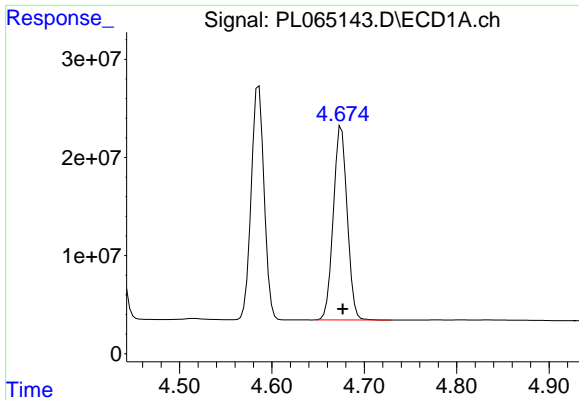
#3 gamma-BHC (Lindane)  
 R.T.: 4.791 min  
 Delta R.T.: -0.002 min  
 Response: 175702970  
 Conc: 55.61 ng/ml



#4 Heptachlor  
 R.T.: 4.431 min  
 Delta R.T.: -0.001 min  
 Response: 217224311  
 Conc: 49.38 ng/ml

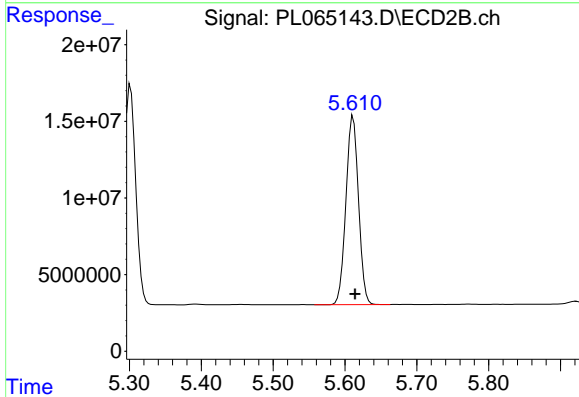


#4 Heptachlor  
 R.T.: 5.302 min  
 Delta R.T.: -0.002 min  
 Response: 168345478  
 Conc: 49.79 ng/ml

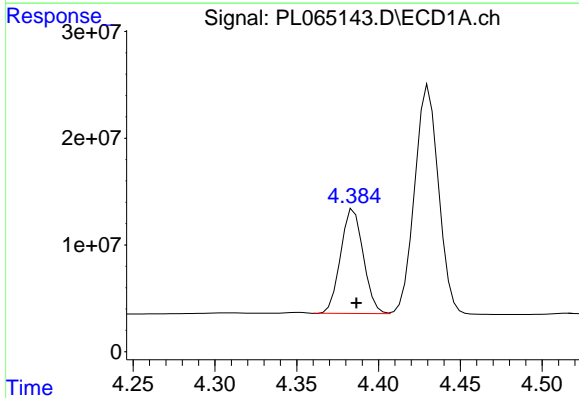


#5 Aldrin  
 R.T.: 4.675 min  
 Delta R.T.: -0.001 min  
 Response: 206101134  
 Conc: 50.47 ng/ml

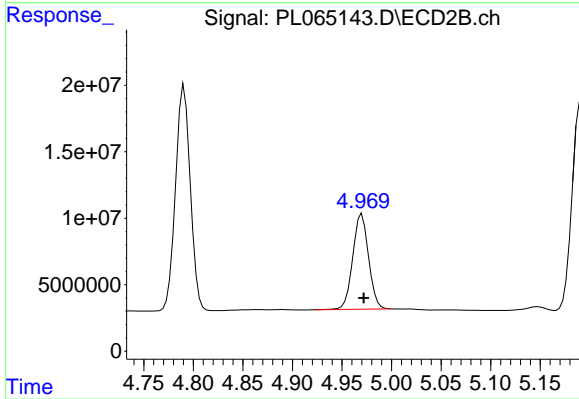
Instrument :  
 ECD\_L  
 ClientSampleId :  
 PB135034BS



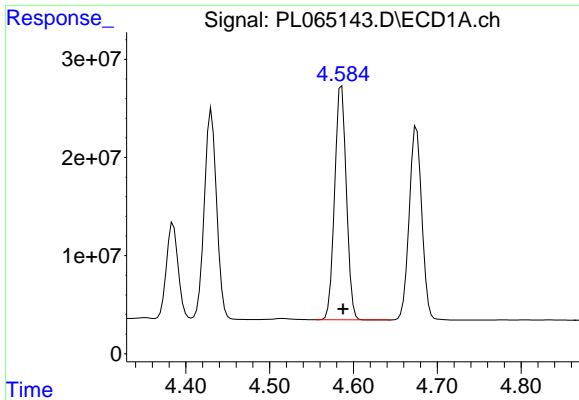
#5 Aldrin  
 R.T.: 5.611 min  
 Delta R.T.: -0.003 min  
 Response: 149459395  
 Conc: 50.60 ng/ml



#6 beta-BHC  
 R.T.: 4.385 min  
 Delta R.T.: -0.001 min  
 Response: 94140827  
 Conc: 50.40 ng/ml

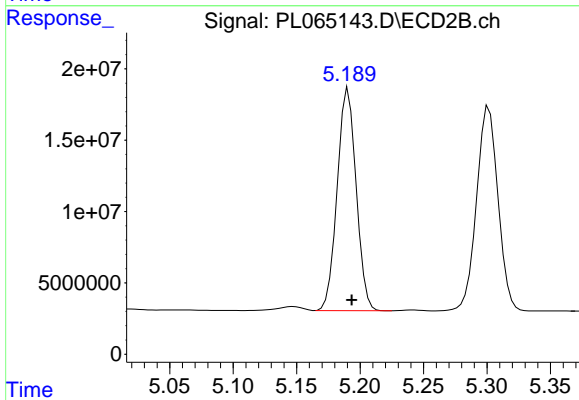


#6 beta-BHC  
 R.T.: 4.970 min  
 Delta R.T.: -0.002 min  
 Response: 79743085  
 Conc: 52.15 ng/ml

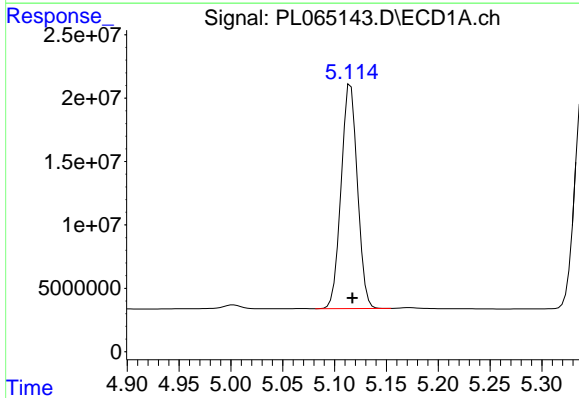


#7 delta-BHC  
 R.T.: 4.586 min  
 Delta R.T.: -0.002 min  
 Response: 231072147  
 Conc: 52.92 ng/ml

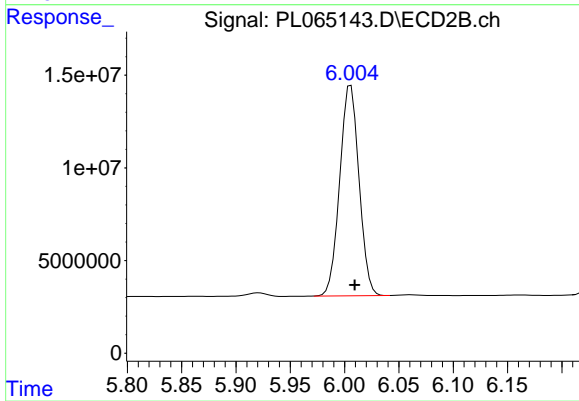
Instrument :  
 ECD\_L  
 ClientSampleId :  
 PB135034BS



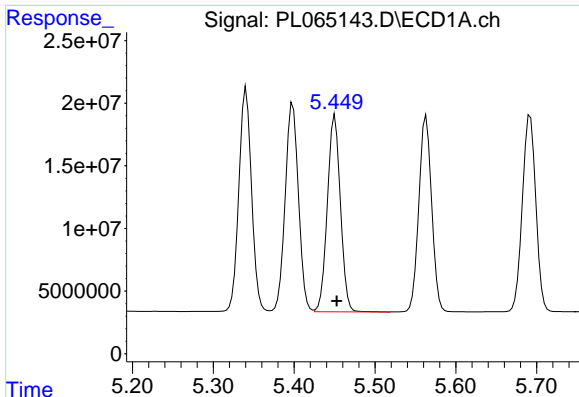
#7 delta-BHC  
 R.T.: 5.191 min  
 Delta R.T.: -0.003 min  
 Response: 161938914  
 Conc: 53.47 ng/ml



#8 Heptachlor epoxide  
 R.T.: 5.115 min  
 Delta R.T.: -0.002 min  
 Response: 193803957  
 Conc: 50.98 ng/ml



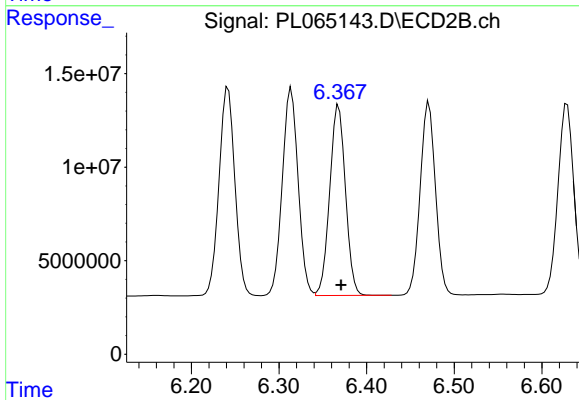
#8 Heptachlor epoxide  
 R.T.: 6.006 min  
 Delta R.T.: -0.003 min  
 Response: 140602510  
 Conc: 58.06 ng/ml



#9 Endosulfan I

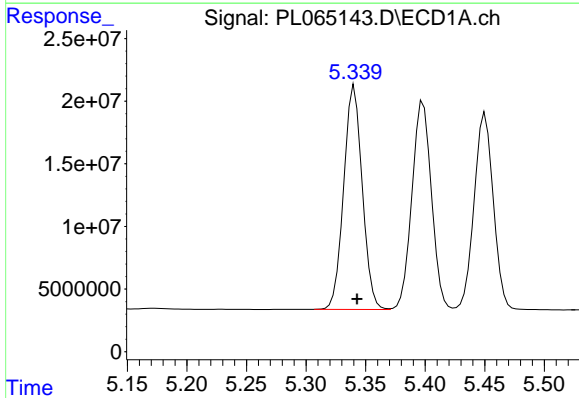
R.T.: 5.451 min  
 Delta R.T.: -0.002 min  
 Response: 176598540  
 Conc: 49.38 ng/ml

Instrument :  
 ECD\_L  
 ClientSampled :  
 PB135034BS



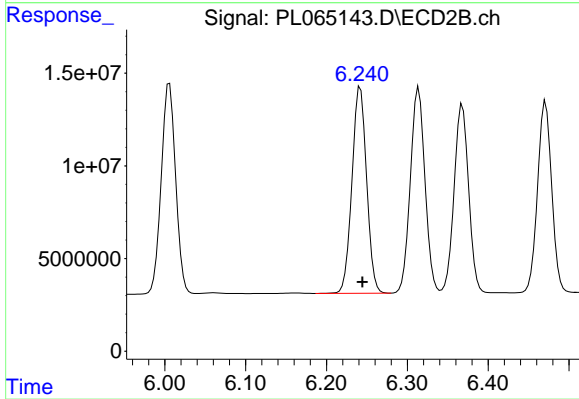
#9 Endosulfan I

R.T.: 6.368 min  
 Delta R.T.: -0.003 min  
 Response: 127315576  
 Conc: 50.15 ng/ml



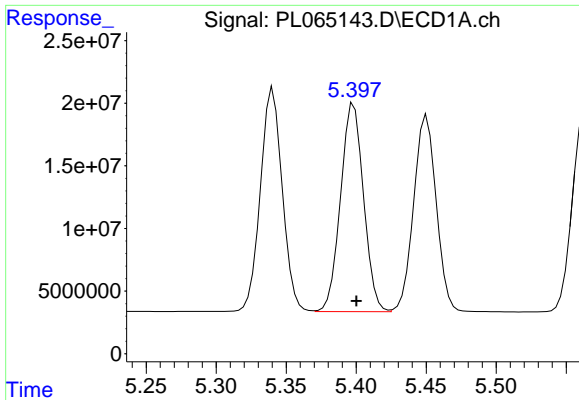
#10 gamma-Chlordane

R.T.: 5.341 min  
 Delta R.T.: -0.002 min  
 Response: 193835872  
 Conc: 49.50 ng/ml



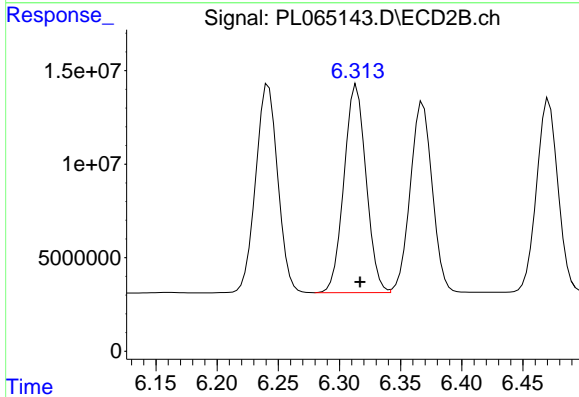
#10 gamma-Chlordane

R.T.: 6.242 min  
 Delta R.T.: -0.003 min  
 Response: 140245457  
 Conc: 50.01 ng/ml

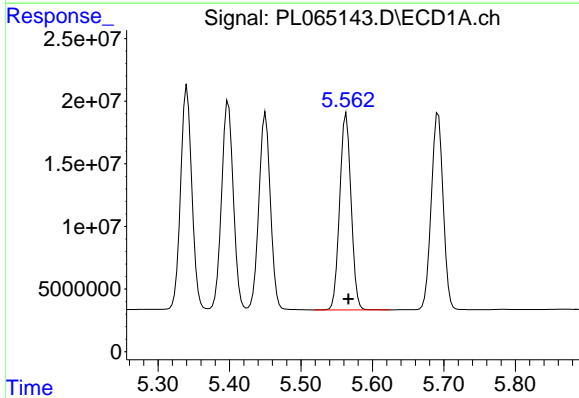


#11 alpha-Chlordane  
R.T.: 5.398 min  
Delta R.T.: -0.002 min  
Response: 190074797  
Conc: 49.60 ng/ml

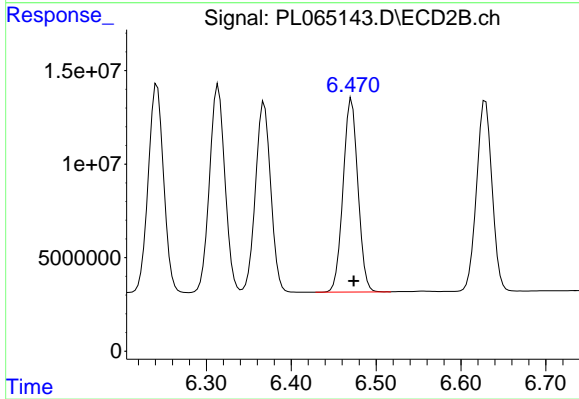
Instrument :  
ECD\_L  
ClientSampled :  
PB135034BS



#11 alpha-Chlordane  
R.T.: 6.314 min  
Delta R.T.: -0.003 min  
Response: 139508551  
Conc: 50.47 ng/ml

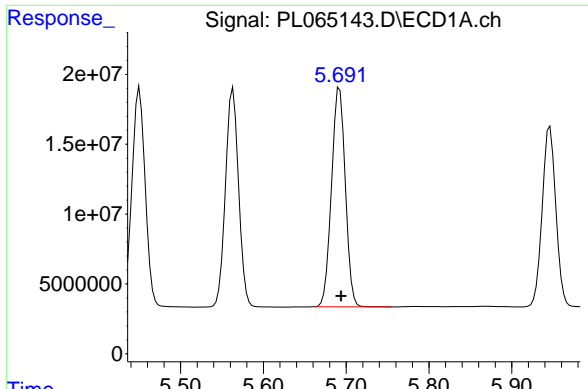


#12 4,4'-DDE  
R.T.: 5.563 min  
Delta R.T.: -0.003 min  
Response: 173117425  
Conc: 48.16 ng/ml



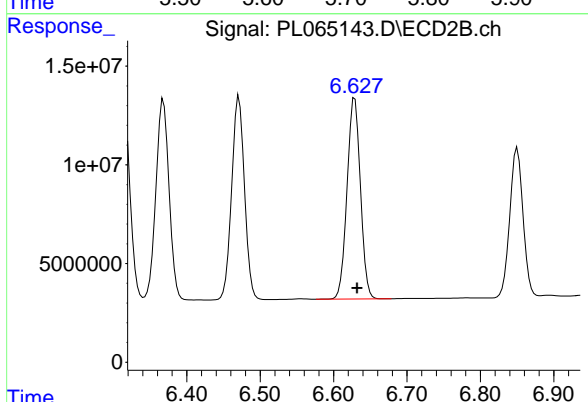
#12 4,4'-DDE  
R.T.: 6.471 min  
Delta R.T.: -0.003 min  
Response: 125432600  
Conc: 50.17 ng/ml



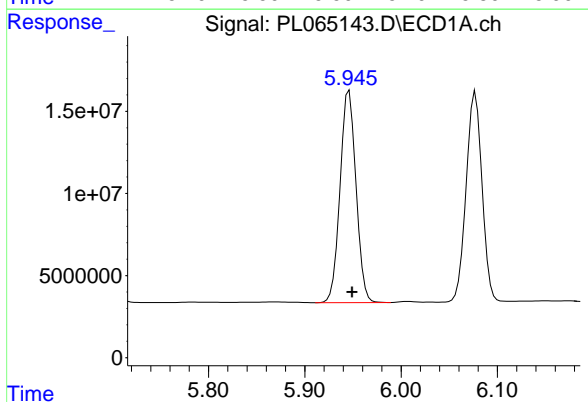


#13 Dieldrin  
 R.T.: 5.692 min  
 Delta R.T.: -0.002 min  
 Response: 181646505  
 Conc: 49.11 ng/ml

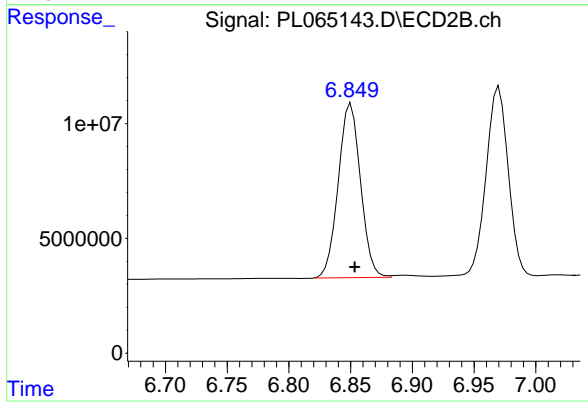
Instrument :  
 ECD\_L  
 ClientSampleId :  
 PB135034BS



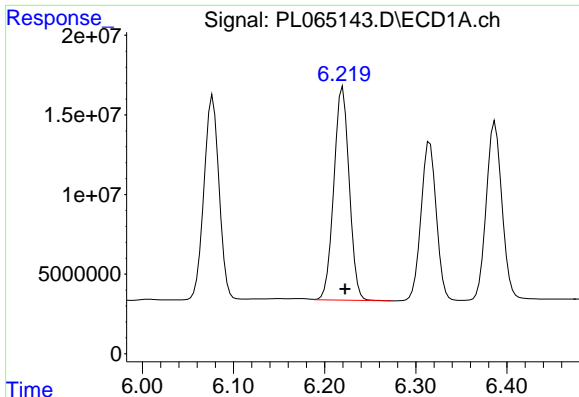
#13 Dieldrin  
 R.T.: 6.629 min  
 Delta R.T.: -0.003 min  
 Response: 129137877  
 Conc: 50.42 ng/ml



#14 Endrin  
 R.T.: 5.946 min  
 Delta R.T.: -0.003 min  
 Response: 148180652  
 Conc: 43.17 ng/ml



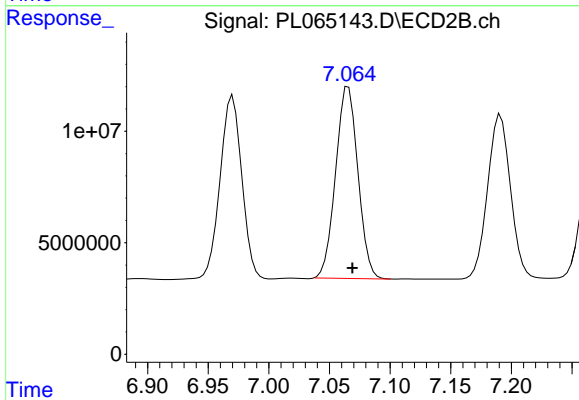
#14 Endrin  
 R.T.: 6.850 min  
 Delta R.T.: -0.003 min  
 Response: 95250306  
 Conc: 45.09 ng/ml



#15 Endosulfan II

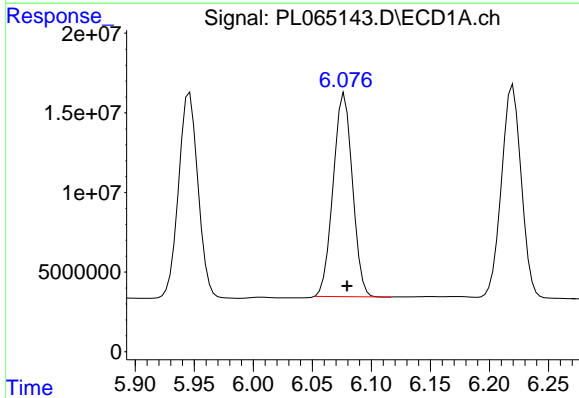
R.T.: 6.220 min  
 Delta R.T.: -0.003 min  
 Response: 156586653  
 Conc: 49.89 ng/ml

Instrument :  
 ECD\_L  
 ClientSampleId :  
 PB135034BS



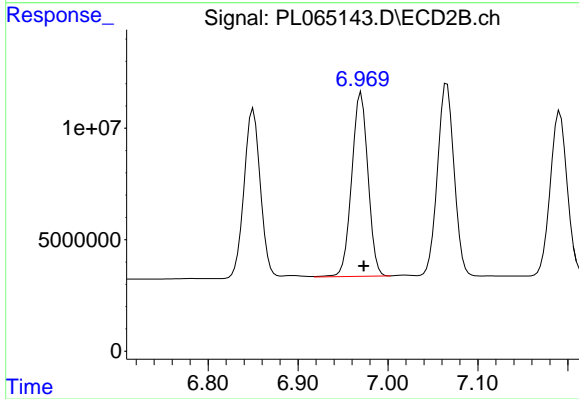
#15 Endosulfan II

R.T.: 7.066 min  
 Delta R.T.: -0.003 min  
 Response: 109935467  
 Conc: 51.80 ng/ml



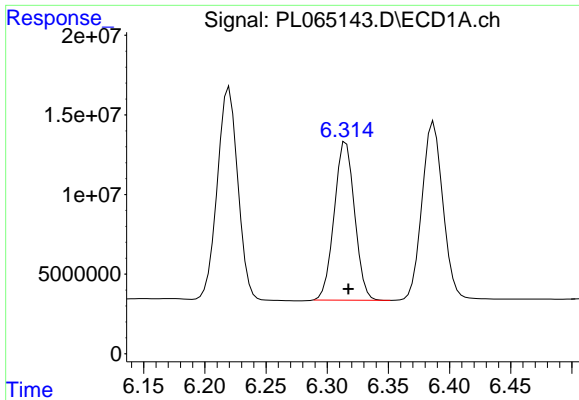
#16 4,4'-DDD

R.T.: 6.077 min  
 Delta R.T.: -0.002 min  
 Response: 145029436  
 Conc: 48.72 ng/ml



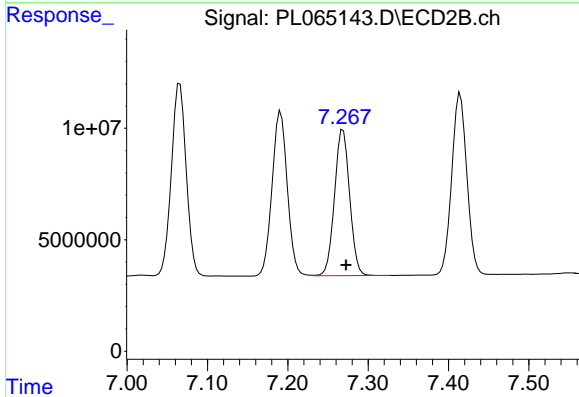
#16 4,4'-DDD

R.T.: 6.970 min  
 Delta R.T.: -0.003 min  
 Response: 103464263  
 Conc: 51.28 ng/ml

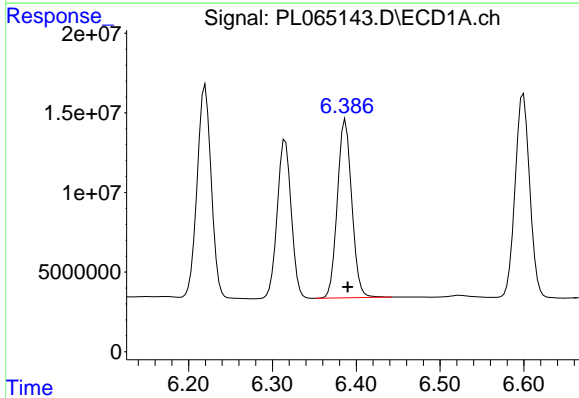


#17 4,4'-DDT  
R.T.: 6.315 min  
Delta R.T.: -0.002 min  
Response: 115257108  
Conc: 41.34 ng/ml

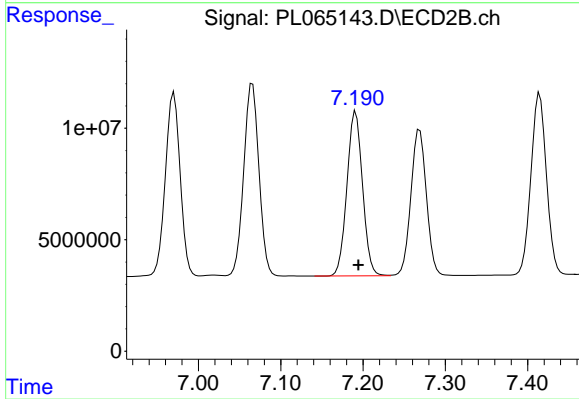
Instrument :  
ECD\_L  
ClientSampleId :  
PB135034BS



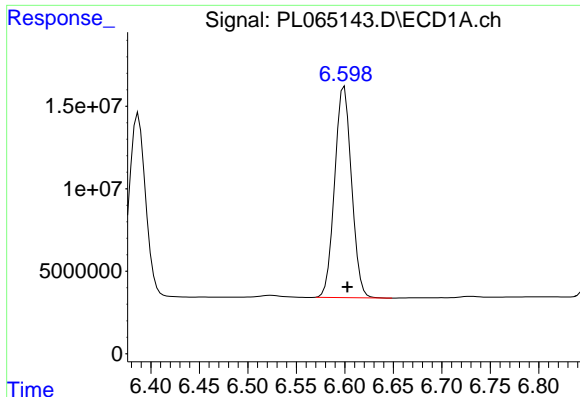
#17 4,4'-DDT  
R.T.: 7.269 min  
Delta R.T.: -0.004 min  
Response: 85822083  
Conc: 43.79 ng/ml



#18 Endrin aldehyde  
R.T.: 6.387 min  
Delta R.T.: -0.003 min  
Response: 133761253  
Conc: 52.18 ng/ml



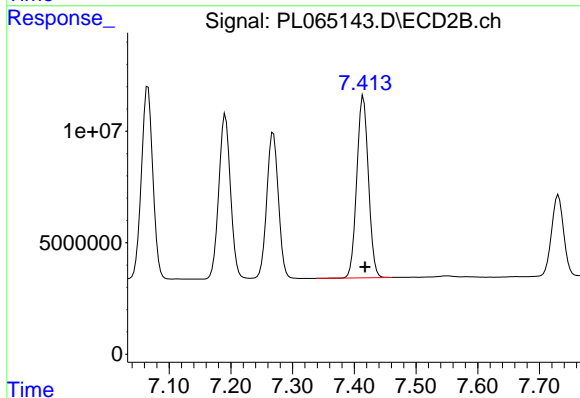
#18 Endrin aldehyde  
R.T.: 7.191 min  
Delta R.T.: -0.003 min  
Response: 97229830  
Conc: 54.96 ng/ml



#19 Endosulfan Sulfate

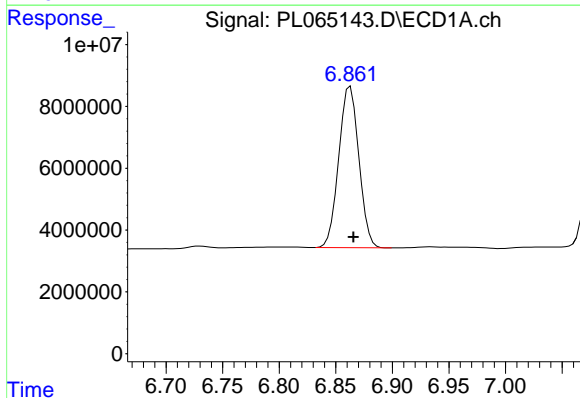
R.T.: 6.600 min  
 Delta R.T.: -0.003 min  
 Response: 154696301  
 Conc: 45.77 ng/ml

Instrument :  
 ECD\_L  
 ClientSampleId :  
 PB135034BS



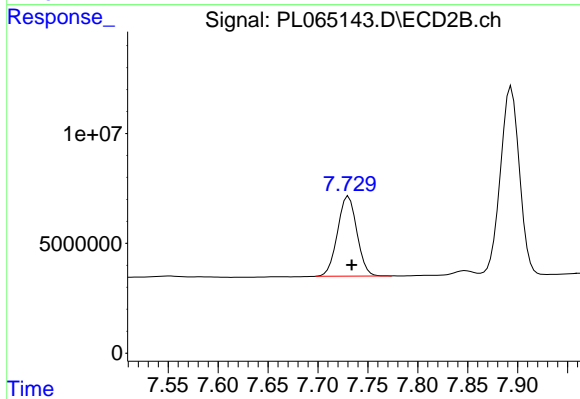
#19 Endosulfan Sulfate

R.T.: 7.415 min  
 Delta R.T.: -0.003 min  
 Response: 106623612  
 Conc: 48.96 ng/ml



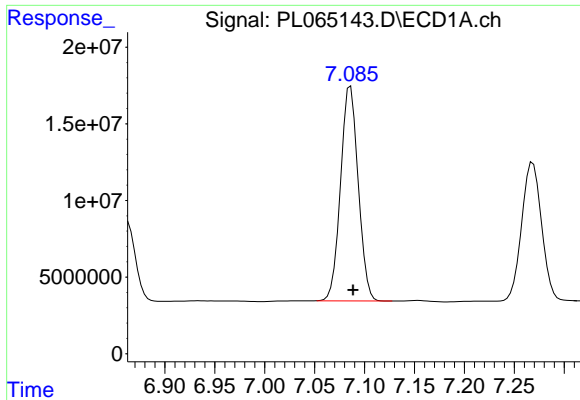
#20 Methoxychlor

R.T.: 6.863 min  
 Delta R.T.: -0.003 min  
 Response: 64475709  
 Conc: 40.84 ng/ml



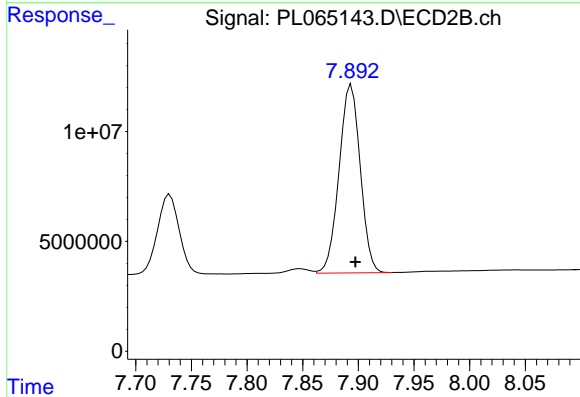
#20 Methoxychlor

R.T.: 7.731 min  
 Delta R.T.: -0.003 min  
 Response: 49177387  
 Conc: 44.37 ng/ml

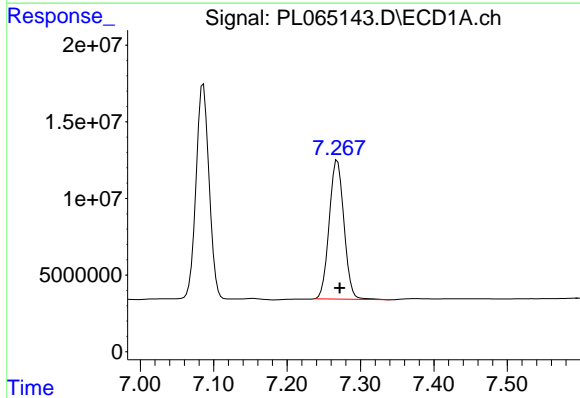


#21 Endrin ketone  
 R.T.: 7.086 min  
 Delta R.T.: -0.003 min  
 Response: 172272376  
 Conc: 49.91 ng/ml

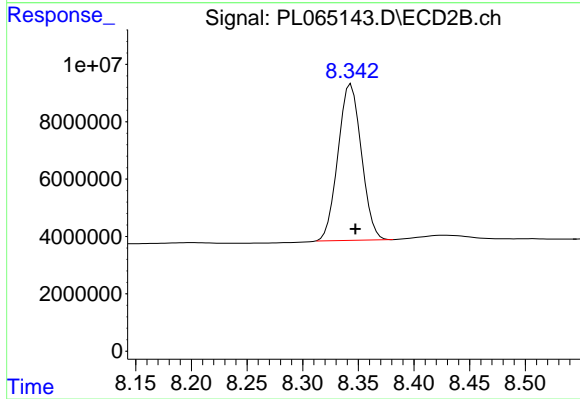
Instrument :  
 ECD\_L  
 ClientSampleId :  
 PB135034BS



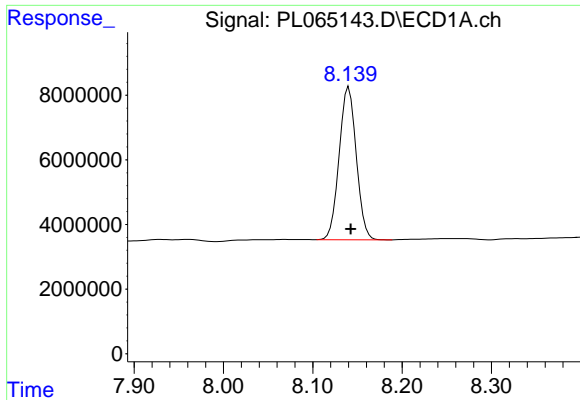
#21 Endrin ketone  
 R.T.: 7.894 min  
 Delta R.T.: -0.004 min  
 Response: 113369844  
 Conc: 53.04 ng/ml



#22 Mirex  
 R.T.: 7.269 min  
 Delta R.T.: -0.003 min  
 Response: 126814480  
 Conc: 47.30 ng/ml



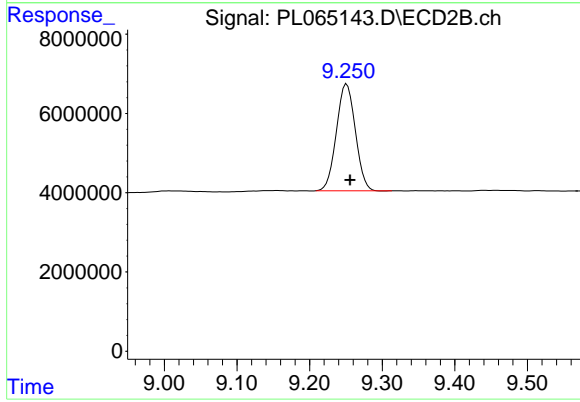
#22 Mirex  
 R.T.: 8.343 min  
 Delta R.T.: -0.004 min  
 Response: 79668622  
 Conc: 47.10 ng/ml



#28 Decachlorobiphenyl

R.T.: 8.140 min  
Delta R.T.: -0.002 min  
Response: 62892503  
Conc: 22.66 ng/ml

Instrument :  
ECD\_L  
ClientSampleId :  
PB135034BS



#28 Decachlorobiphenyl

R.T.: 9.251 min  
Delta R.T.: -0.005 min  
Response: 48935333  
Conc: 22.28 ng/ml