

Data Path : Z:\pestpcbsrv\HPCHEM1\ECD_L\Data\PL030922\
 Data File : PL073240.D
 Signal(s) : Signal #1: ECD1A.ch Signal #2: ECD2B.ch
 Acq On : 09 Mar 2022 16:23
 Operator : AR\AJ
 Sample : PB143148BS
 Misc :
 ALS Vial : 8 Sample Multiplier: 1

Instrument :
 ECD_L
 ClientSampleId :
 PLCS148

Manual Integrations
APPROVED

Reviewed By :Abdul Mirza 03/22/2022
 Supervised By :Yogesh Patel 03/22/2022

Integration File signal 1: autoint1.e
 Integration File signal 2: autoint2.e
 Quant Time: Mar 10 04:49:24 2022
 Quant Method : Z:\pestpcbsrv\HPCHEM1\ECD_L\methods\PL022522CLP.M
 Quant Title : GC Extractables
 QLast Update : Tue Mar 01 01:47:07 2022
 Response via : Initial Calibration
 Integrator: ChemStation

Volume Inj. : 1 µl
 Signal #1 Phase : ZB-MR2 Signal #2 Phase: ZB-MR1
 Signal #1 Info : 30M x 0.32mm x0.2 Signal #2 Info : 30M x 0.32mm x 0.50µm

Compound	RT#1	RT#2	Resp#1	Resp#2	ng/ml	ng/ml

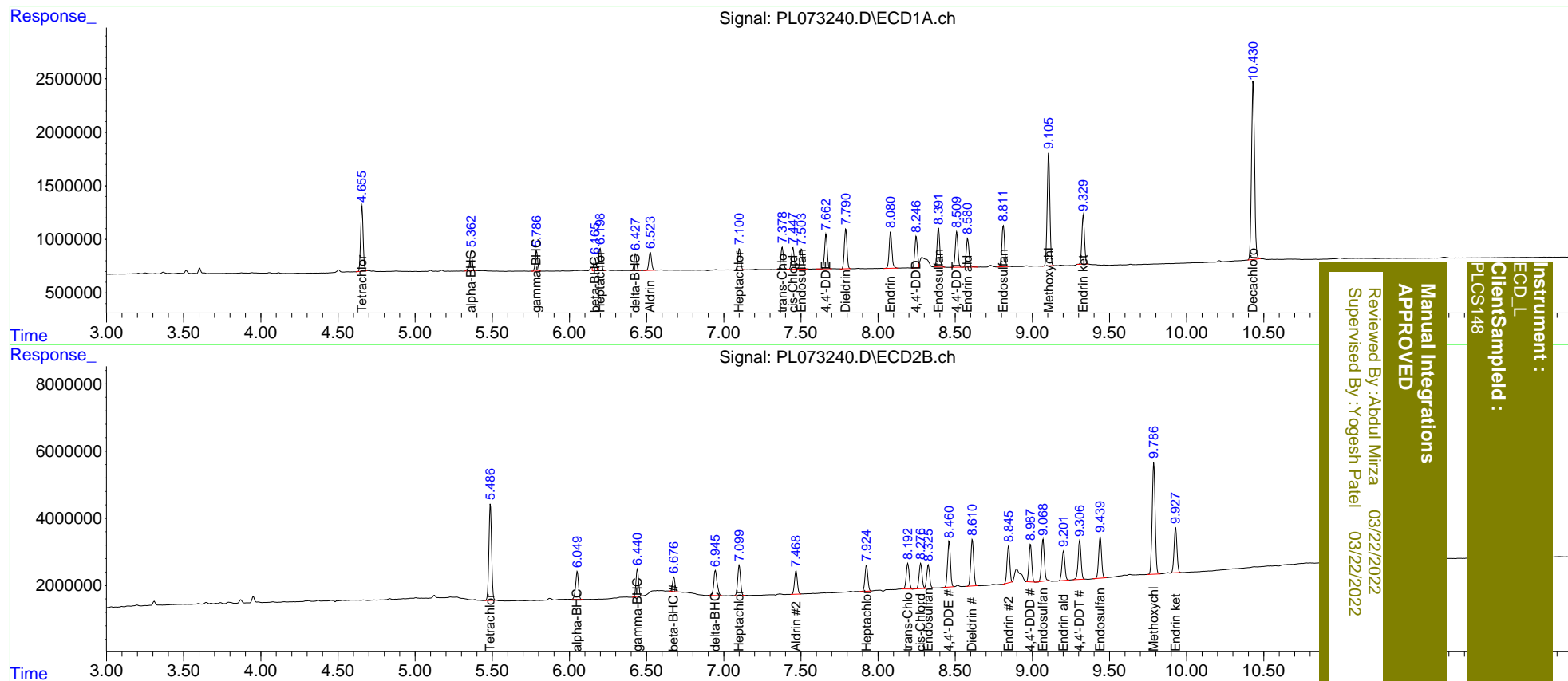
System Monitoring Compounds						
1) SA Tetrachlo...	4.656	5.488	6891474	35036808	20.040	22.443
27) SA Decachlor...	10.431	11.334	22734777	76637769	47.284	47.415
Target Compounds						
2) A alpha-BHC	5.364	6.051	2173203	10700413	5.222	5.533
3) MA gamma-BHC...	5.787	6.441	2057787	9658631	4.683	5.097
4) MA Heptachlor	6.199	7.099	2487668	11521286	5.262	5.680m
5) MB Aldrin	6.524	7.469	2040515	9065376	4.511	5.014
6) B beta-BHC	6.165	6.677	1319359	4790398	5.375m	4.896
7) B delta-BHC	6.428	6.946	1731751	11241618	4.019	5.814 #
8) B Heptachlo...	7.101	7.926	2409558	10042242	5.139	5.902
9) A Endosulfan I	7.505	8.326	2285554	9095463	5.060	5.708
10) B trans-Chl...	7.379	8.194	2507853	10032968	5.258	5.749
11) B cis-Chlor...	7.449	8.277	2477144	10043149	5.192	5.883
12) B 4,4'-DDE	7.663	8.461	3776269	17380558	9.772	11.483
13) MA Dieldrin	7.792	8.611	4451808	18087290	9.502	10.902
14) MA Endrin	8.082	8.846	4267523	13572631	10.498	10.160
15) B Endosulfa...	8.391	9.069	4490420	15987424	9.583m	11.030
16) A 4,4'-DDD	8.246	8.988	3488671	13974596	9.875m	10.641
17) MA 4,4'-DDT	8.510	9.307	3927760	15232874	10.126	11.551
18) B Endrin al...	8.581	9.203	3368756	11915759	10.132	11.140
19) B Endosulfa...	8.812	9.440	4763510	16191981	10.889	11.768
20) A Methoxychlor	9.106	9.787	12901895	44705853	52.659	58.373
21) B Endrin ke...	9.330	9.929	5481432	17477447	11.493	12.331

(f)=RT Delta > 1/2 Window (#)=Amounts differ by > 25% (m)=manual int.

Data Path : Z:\pestpcbsrv\HPCHEM1\ECD_L\Data\PL030922\
 Data File : PL073240.D
 Signal(s) : Signal #1: ECD1A.ch Signal #2: ECD2B.ch
 Acq On : 09 Mar 2022 16:23
 Operator : AR\AJ
 Sample : PB143148BS
 Misc :
 ALS Vial : 8 Sample Multiplier: 1

Integration File signal 1: autoint1.e
 Integration File signal 2: autoint2.e
 Quant Time: Mar 10 04:49:24 2022
 Quant Method : Z:\pestpcbsrv\HPCHEM1\ECD_L\methods\PL022522CLP.M
 Quant Title : GC Extractables
 QLast Update : Tue Mar 01 01:47:07 2022
 Response via : Initial Calibration
 Integrator: ChemStation

Volume Inj. : 1 µl
 Signal #1 Phase : ZB-MR2 Signal #2 Phase: ZB-MR1
 Signal #1 Info : 30M x 0.32mm x0.2 Signal #2 Info : 30M x 0.32mm x 0.50µm



Instrument : ECD_L
 Client/Sample ID : PLCS148
 Manual Integrations APPROVED
 Reviewed By : Abdul Mirza 03/22/2022
 Supervised By : Yogesh Patel 03/22/2022