

Data Path : Z:\pestpcbsrv\HPCHEM1\ECD\_L\Data\PL030922\  
 Data File : PL073259.D  
 Signal(s) : Signal #1: ECD1A.ch Signal #2: ECD2B.ch  
 Acq On : 09 Mar 2022 23:17  
 Operator : AR\AJ  
 Sample : N1816-12  
 Misc :  
 ALS Vial : 24 Sample Multiplier: 1

Instrument :  
 ECD\_L  
 ClientSampleId :  
 DBSD7

Integration File signal 1: autoint1.e  
 Integration File signal 2: autoint2.e  
 Quant Time: Mar 10 05:53:25 2022  
 Quant Method : Z:\pestpcbsrv\HPCHEM1\ECD\_L\methods\PL022522CLP.M  
 Quant Title : GC Extractables  
 QLast Update : Tue Mar 01 01:47:07 2022  
 Response via : Initial Calibration  
 Integrator: ChemStation

Volume Inj. : 1 µl  
 Signal #1 Phase : ZB-MR2 Signal #2 Phase: ZB-MR1  
 Signal #1 Info : 30M x 0.32mm x0.2 Signal #2 Info : 30M x 0.32mm x 0.50µm

Compound	RT#1	RT#2	Resp#1	Resp#2	ng/ml	ng/ml
-----						
System Monitoring Compounds						
1) SA Tetrachlo...	4.644	5.492	7282760	35550891	21.177	22.772
2) SA Decachlor...	10.422	11.332	20163845	68592713	41.937	42.438

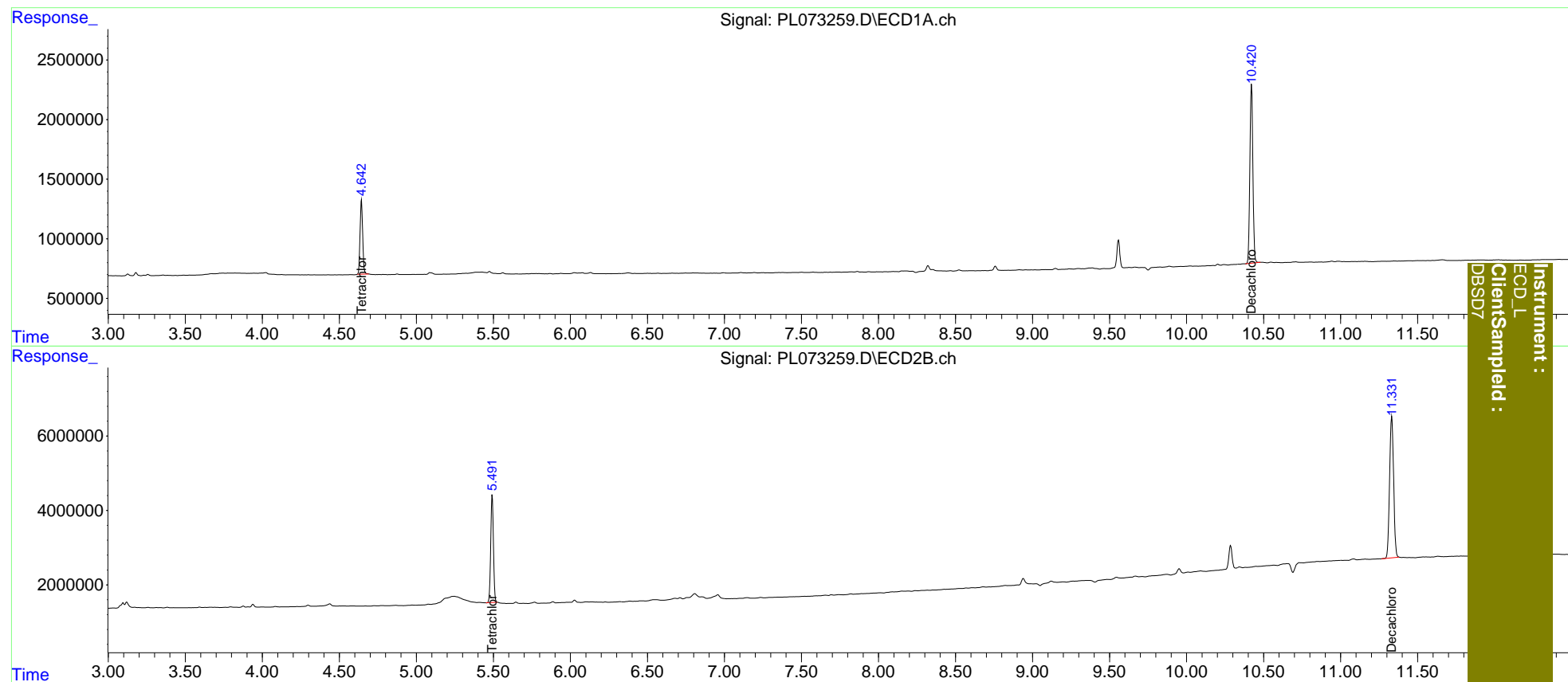
Target Compounds

-----  
 (f)=RT Delta > 1/2 Window (#)=Amounts differ by > 25% (m)=manual int.

Data Path : Z:\pestpcbsrv\HPCHEM1\ECD\_L\Data\PL030922\  
 Data File : PL073259.D  
 Signal(s) : Signal #1: ECD1A.ch Signal #2: ECD2B.ch  
 Acq On : 09 Mar 2022 23:17  
 Operator : AR\AJ  
 Sample : N1816-12  
 Misc :  
 ALS Vial : 24 Sample Multiplier: 1

Integration File signal 1: autoint1.e  
 Integration File signal 2: autoint2.e  
 Quant Time: Mar 10 05:53:25 2022  
 Quant Method : Z:\pestpcbsrv\HPCHEM1\ECD\_L\methods\PL022522CLP.M  
 Quant Title : GC Extractables  
 QLast Update : Tue Mar 01 01:47:07 2022  
 Response via : Initial Calibration  
 Integrator: ChemStation

Volume Inj. : 1 µl  
 Signal #1 Phase : ZB-MR2 Signal #2 Phase: ZB-MR1  
 Signal #1 Info : 30M x 0.32mm x0.2 Signal #2 Info : 30M x 0.32mm x 0.50µm



Instrument :  
 ECD\_L  
 ClientSampled :  
 DBSD7