

Data Path : Z:\pestpcbsrv\HPCHEM1\ECD\_L\Data\PL030922\  
 Data File : PL073270.D  
 Signal(s) : Signal #1: ECD1A.ch Signal #2: ECD2B.ch  
 Acq On : 10 Mar 2022 06:04  
 Operator : AR\AJ  
 Sample : INDA342  
 Misc :  
 ALS Vial : 9 Sample Multiplier: 1

Instrument :  
 ECD\_L  
 ClientSampleId :  
 INDA3384

Manual Integrations  
**APPROVED**

Reviewed By :Abdul Mirza 03/11/2022  
 Supervised By :Ankita Jodhani 03/11/2022

Integration File signal 1: autoint1.e  
 Integration File signal 2: autoint2.e  
 Quant Time: Mar 10 09:49:01 2022  
 Quant Method : Z:\pestpcbsrv\HPCHEM1\ECD\_L\methods\PL022522CLP.M  
 Quant Title : GC Extractables  
 QLast Update : Tue Mar 01 01:47:07 2022  
 Response via : Initial Calibration  
 Integrator: ChemStation

Volume Inj. : 1 µl  
 Signal #1 Phase : ZB-MR2 Signal #2 Phase: ZB-MR1  
 Signal #1 Info : 30M x 0.32mm x0.2 Signal #2 Info : 30M x 0.32mm x 0.50µm

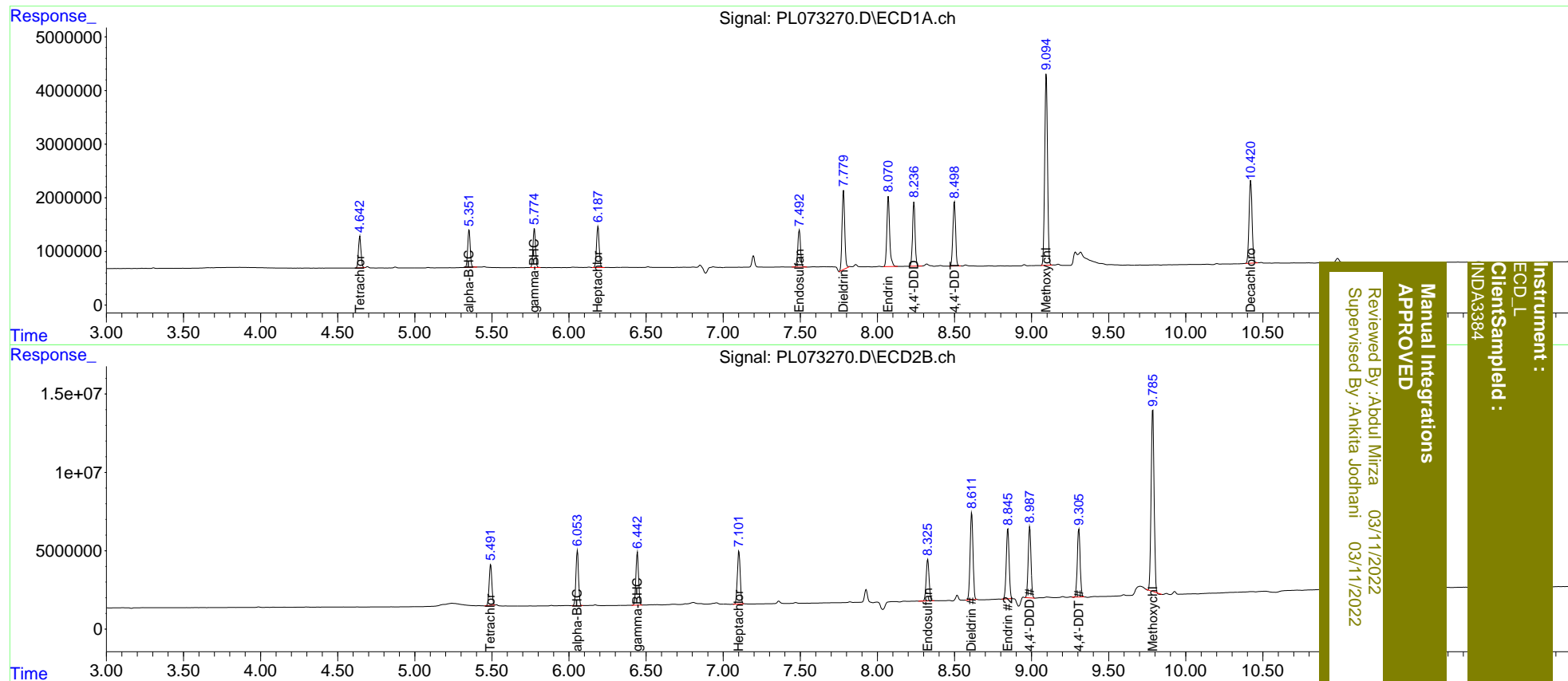
Compound	RT#1	RT#2	Resp#1	Resp#2	ng/ml	ng/ml
-----						
System Monitoring Compounds						
1) SA Tetrachlo...	4.644	5.492	6703002	32115188	19.492	20.571
27) SA Decachlor...	10.420	11.331	20954960	71514998	43.582m	44.246
Target Compounds						
2) A alpha-BHC	5.352	6.055	7905131	40915720	18.995	21.155
3) MA gamma-BHC...	5.776	6.444	8192706	40071955	18.646	21.144
4) MA Heptachlor	6.188	7.102	9164247	43303393	19.385	21.348
9) A Endosulfan I	7.494	8.327	8437733	35059127	18.681	22.000
13) MA Dieldrin	7.780	8.612	17706817	72626919	37.793	43.777
14) MA Endrin	8.071	8.846	16635775	58086787	40.923	43.483
16) A 4,4'-DDD	8.237	8.987	13694383	57320456	38.763	43.647m
17) MA 4,4'-DDT	8.500	9.307	14529547	55096785	37.460	41.781
20) A Methoxychlor	9.095	9.786	45567422	154.8E6	185.982	202.108
-----						

(f)=RT Delta > 1/2 Window (#)=Amounts differ by > 25% (m)=manual int.

Data Path : Z:\pestpcbsrv\HPCHEM1\ECD\_L\Data\PL030922\  
 Data File : PL073270.D  
 Signal(s) : Signal #1: ECD1A.ch Signal #2: ECD2B.ch  
 Acq On : 10 Mar 2022 06:04  
 Operator : AR\AJ  
 Sample : INDA342  
 Misc :  
 ALS Vial : 9 Sample Multiplier: 1

Integration File signal 1: autoint1.e  
 Integration File signal 2: autoint2.e  
 Quant Time: Mar 10 09:49:01 2022  
 Quant Method : Z:\pestpcbsrv\HPCHEM1\ECD\_L\methods\PL022522CLP.M  
 Quant Title : GC Extractables  
 QLast Update : Tue Mar 01 01:47:07 2022  
 Response via : Initial Calibration  
 Integrator: ChemStation

Volume Inj. : 1 µl  
 Signal #1 Phase : ZB-MR2 Signal #2 Phase: ZB-MR1  
 Signal #1 Info : 30M x 0.32mm x0.2 Signal #2 Info : 30M x 0.32mm x 0.50µm



**Instrument :** ECD\_L  
**Client/SampleID :** INDA3384  
**Manual Integrations APPROVED**  
 Reviewed By :Abdul Mirza 03/11/2022  
 Supervised By :Ankita Jodhani 03/11/2022