

Data Path : Z:\pestpcbsrv\HPCHEM1\ECD\_L\Data\PL030923\  
 Data File : PL081380.D  
 Signal(s) : Signal #1: ECD1A.ch Signal #2: ECD2B.ch  
 Acq On : 09 Mar 2023 20:50  
 Operator : AR\AJ  
 Sample : 01833-04  
 Misc :  
 ALS Vial : 29 Sample Multiplier: 1

Instrument :  
 ECD\_L  
 ClientSampleId :

Integration File signal 1: autoint1.e  
 Integration File signal 2: autoint2.e  
 Quant Time: Mar 10 04:07:13 2023  
 Quant Method : Z:\pestpcbsrv\HPCHEM1\ECD\_L\methods\PL030223.M  
 Quant Title : GC Extractables  
 QLast Update : Fri Mar 03 01:48:45 2023  
 Response via : Initial Calibration  
 Integrator: ChemStation

Volume Inj. : 1 µl  
 Signal #1 Phase : ZB-MR2 Signal #2 Phase: ZB-MR1  
 Signal #1 Info : 30M x 0.32mm x0.2 Signal #2 Info : 30M x 0.32mm x0.5µm

Compound	RT#1	RT#2	Resp#1	Resp#2	ng/ml	ng/ml
-----						
System Monitoring Compounds						
1) SA Tetrachlo...	3.333	2.663	42439135	37456984	19.643	18.508
28) SA Decachlor...	8.756	7.785	28676944	31710469	18.810	16.554
Target Compounds						
2) A alpha-BHC	0.000	3.147f	0	11369	N.D.	0.004 #
3) MA gamma-BHC...	0.000	3.508	0	388034	N.D.	0.141 #
4) MA Heptachlor	0.000	3.832	0	69522	N.D.	0.025 #
5) MB Aldrin	0.000	4.096	0	305603	N.D.	0.117 #
6) B beta-BHC	4.318	3.797	625360	-38810	0.454	N.D. #
7) B delta-BHC	4.550	4.019	1722790	85182	0.620	0.033 #
8) B Heptachlo...	5.452	4.620	1963795	488596	0.832	0.202 #
9) A Endosulfan I	5.825	5.007f	1869823	479187	0.885	0.212 #
10) B gamma-Chl...	5.686f	4.873	8999157	700361	3.944	0.286 #
11) B alpha-Chl...	5.789	4.932	986214	805586	0.438	0.329
12) B 4,4'-DDE	0.000	5.131f	0	4548275	N.D.	2.317 #
13) MA Dieldrin	0.000	5.230	0	194357	N.D.	0.086 #
14) MA Endrin	0.000	5.540f	0	7969069	N.D.	3.965 #
17) MA 4,4'-DDT	0.000	5.909	0	92619	N.D.	0.058 #
18) B Endrin al...	0.000	6.007	0	83011	N.D.	0.055 #
19) B Endosulfa...	6.930	6.236f	228688	-2806	0.127	N.D. #
20) A Methoxychlor	7.304f	6.524f	54268	215253	0.063	0.232 #
21) B Endrin ke...	0.000	6.719	0	27201	N.D.	0.013 #
22) Mirex	7.899f	6.888	-6218	66093	N.D.	0.034
24) Chlordane-2	0.000	4.210f	0	3764459	N.D.	36.773 #
25) Chlordane-3	5.686f	4.873	8999157	700361	24.603	2.591 #
26) Chlordane-4	5.789	4.932	986214	805586	2.244	2.868 #

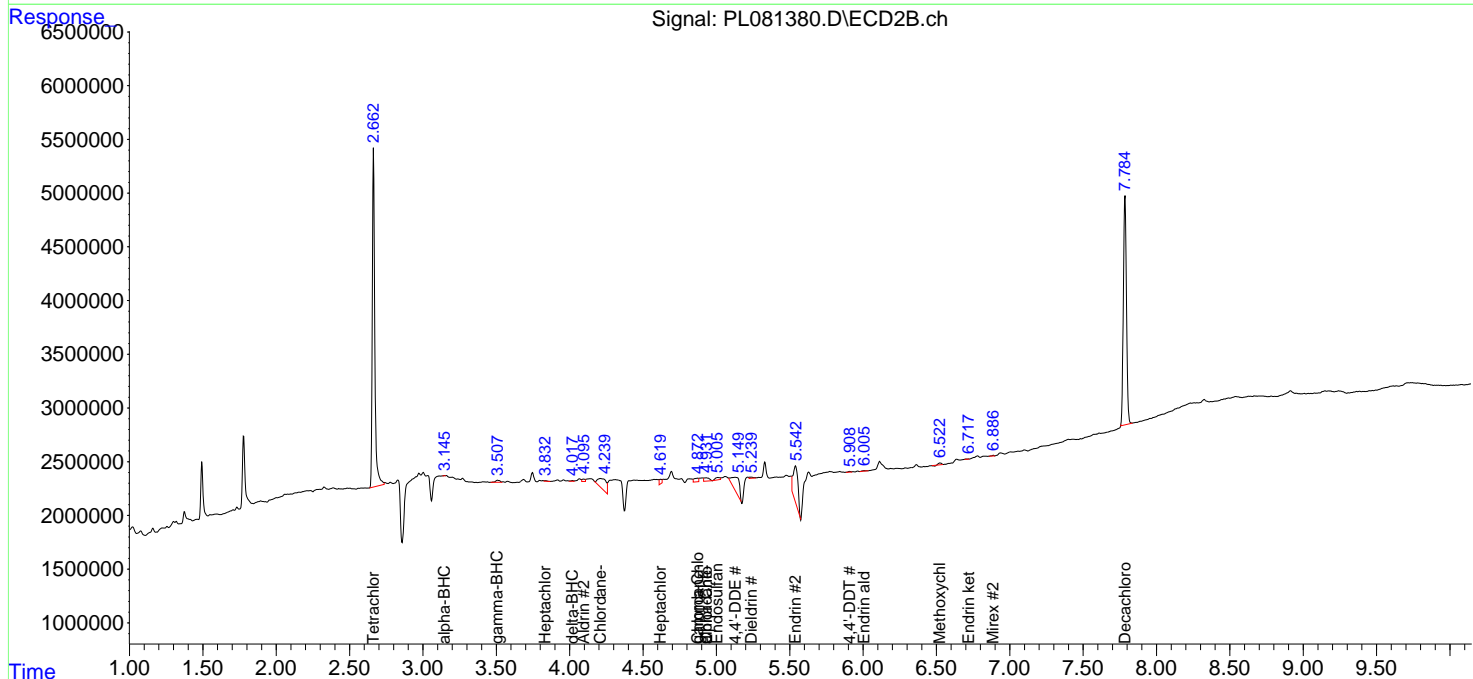
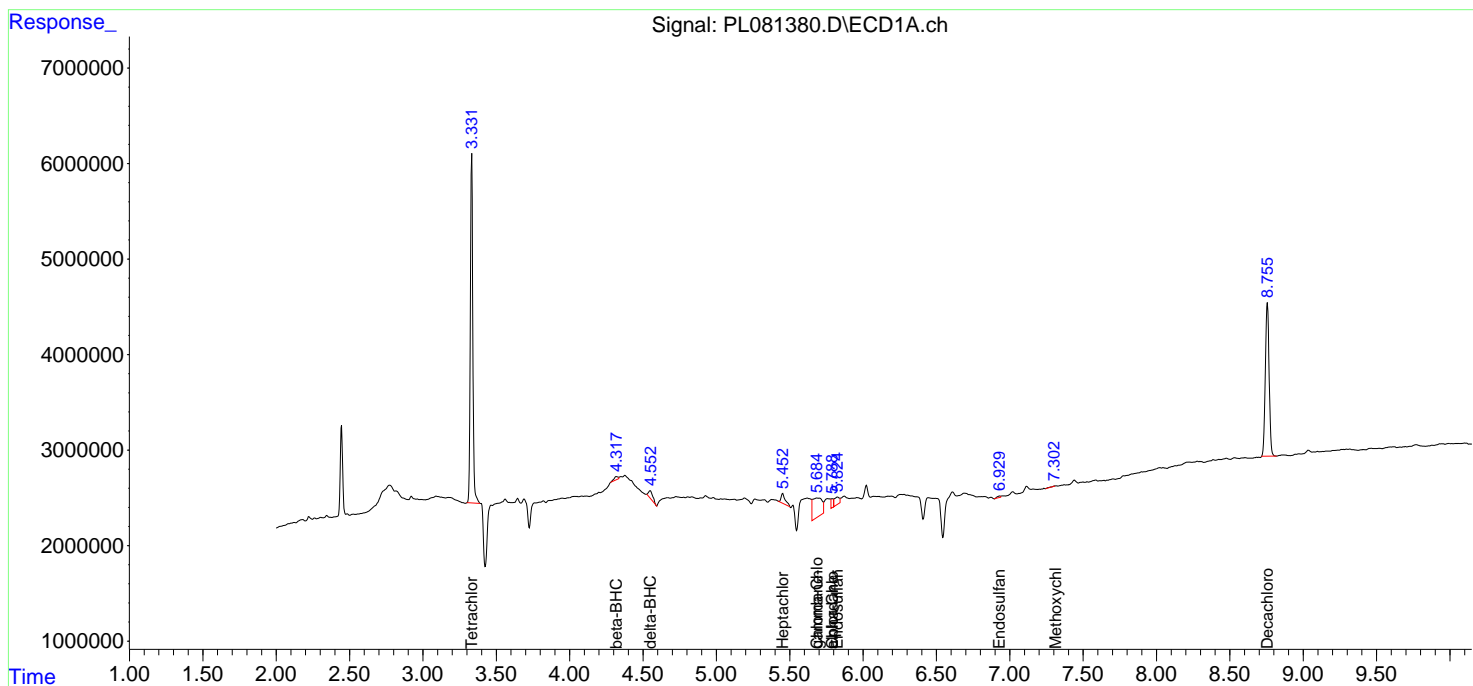
(f)=RT Delta > 1/2 Window (#)=Amounts differ by > 25% (m)=manual int.

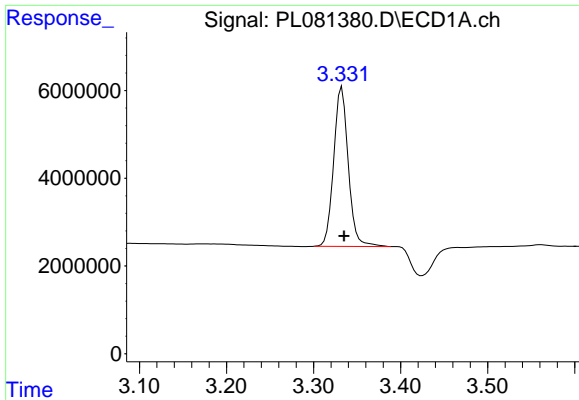
Data Path : Z:\pestpcbsrv\HPCHEM1\ECD\_L\Data\PL030923\  
 Data File : PL081380.D  
 Signal(s) : Signal #1: ECD1A.ch Signal #2: ECD2B.ch  
 Acq On : 09 Mar 2023 20:50  
 Operator : AR\AJ  
 Sample : 01833-04  
 Misc :  
 ALS Vial : 29 Sample Multiplier: 1

Instrument :  
 ECD\_L  
 ClientSampleId :

Integration File signal 1: autoint1.e  
 Integration File signal 2: autoint2.e  
 Quant Time: Mar 10 04:07:13 2023  
 Quant Method : Z:\pestpcbsrv\HPCHEM1\ECD\_L\methods\PL030223.M  
 Quant Title : GC Extractables  
 QLast Update : Fri Mar 03 01:48:45 2023  
 Response via : Initial Calibration  
 Integrator: ChemStation

Volume Inj. : 1 µl  
 Signal #1 Phase : ZB-MR2 Signal #2 Phase: ZB-MR1  
 Signal #1 Info : 30M x 0.32mm x0.2 Signal #2 Info : 30M x 0.32mm x0.5µm

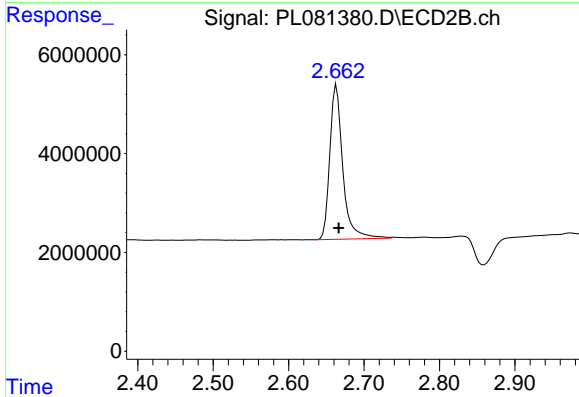




#1 Tetrachloro-m-xylene

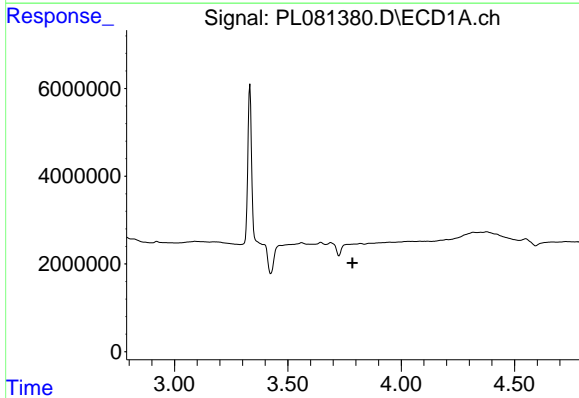
R.T.: 3.333 min  
 Delta R.T.: -0.002 min  
 Response: 42439135  
 Conc: 19.64 ng/ml

Instrument :  
 ECD\_L  
 ClientSampleId :



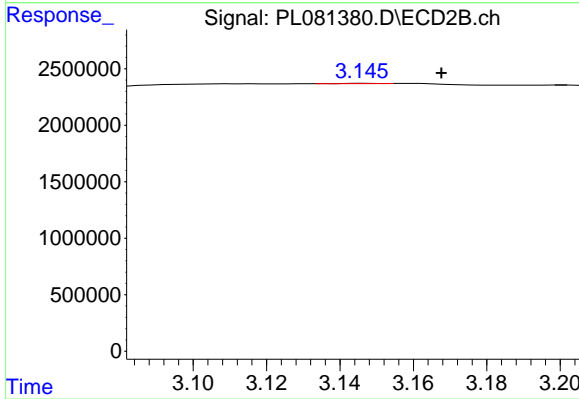
#1 Tetrachloro-m-xylene

R.T.: 2.663 min  
 Delta R.T.: -0.003 min  
 Response: 37456984  
 Conc: 18.51 ng/ml



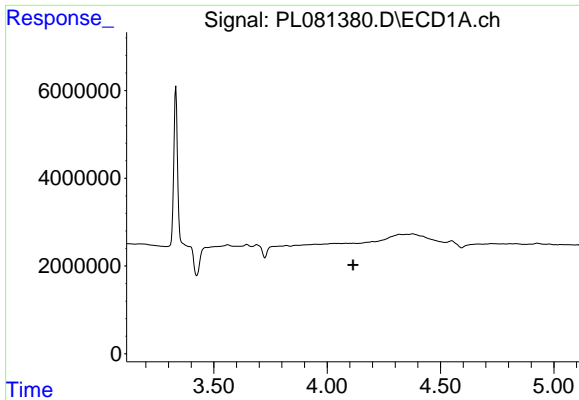
#2 alpha-BHC

R.T.: 0.000 min  
 Exp R.T. : 3.785 min  
 Response: 0  
 Conc: N.D.



#2 alpha-BHC

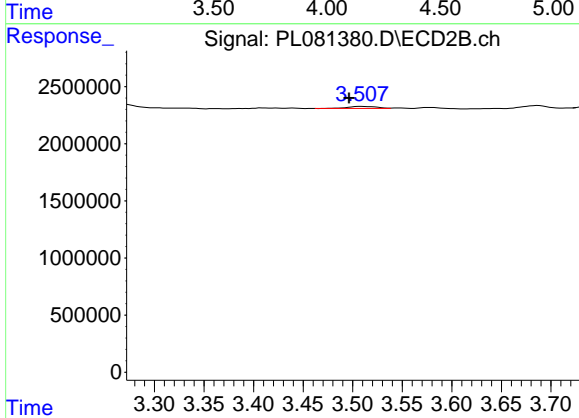
R.T.: 3.147 min  
 Delta R.T.: -0.021 min  
 Response: 11369  
 Conc: 0.00 ng/ml



#3 gamma-BHC (Lindane)

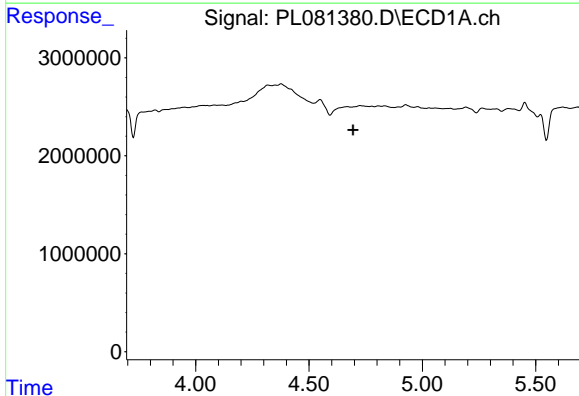
R.T.: 0.000 min  
 Exp R.T.: 4.114 min  
 Response: 0  
 Conc: N.D.

Instrument :  
 ECD\_L  
 ClientSampleId :



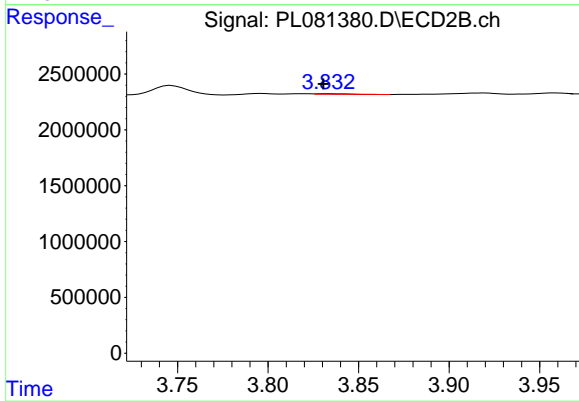
#3 gamma-BHC (Lindane)

R.T.: 3.508 min  
 Delta R.T.: 0.012 min  
 Response: 388034  
 Conc: 0.14 ng/ml



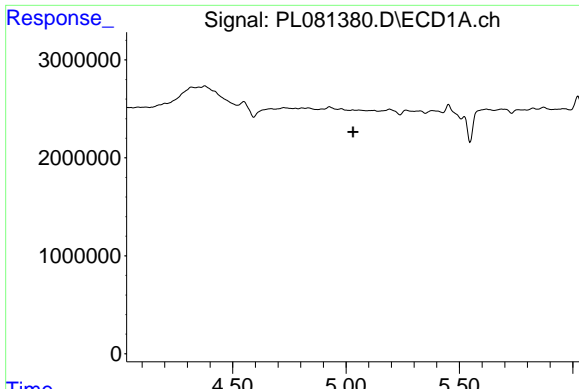
#4 Heptachlor

R.T.: 0.000 min  
 Exp R.T.: 4.694 min  
 Response: 0  
 Conc: N.D.



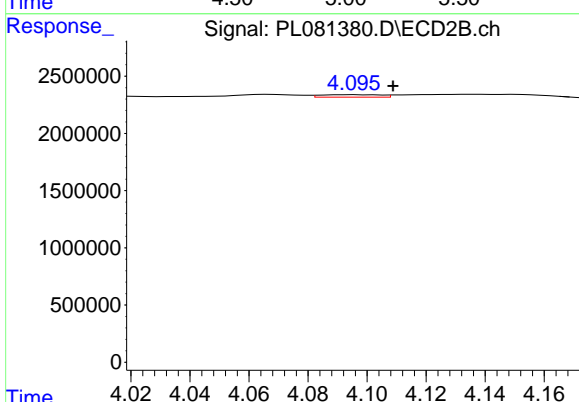
#4 Heptachlor

R.T.: 3.832 min  
 Delta R.T.: 0.002 min  
 Response: 69522  
 Conc: 0.03 ng/ml

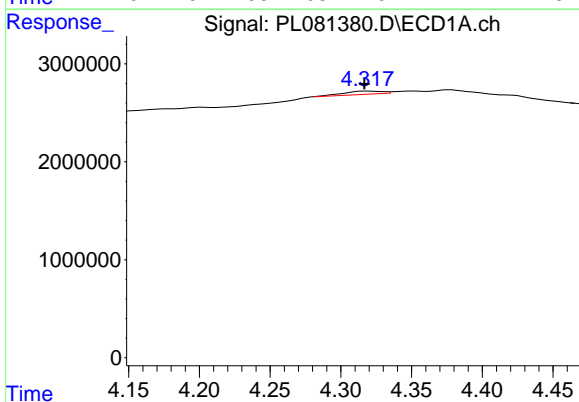


#5 Aldrin  
 R.T.: 0.000 min  
 Exp R.T.: 5.032 min  
 Response: 0  
 Conc: N.D.

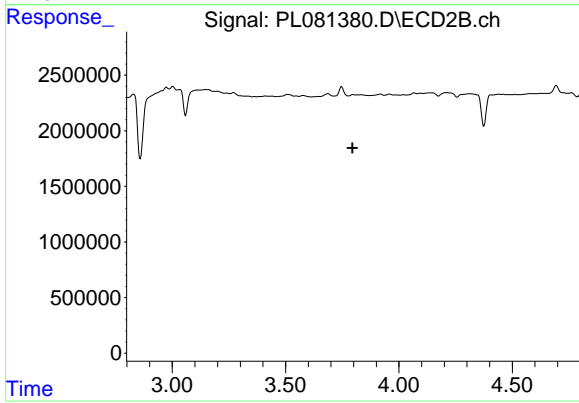
Instrument :  
 ECD\_L  
 ClientSampleId :



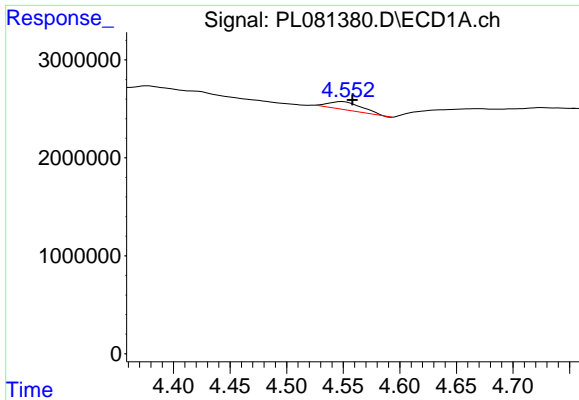
#5 Aldrin  
 R.T.: 4.096 min  
 Delta R.T.: -0.013 min  
 Response: 305603  
 Conc: 0.12 ng/ml



#6 beta-BHC  
 R.T.: 4.318 min  
 Delta R.T.: 0.002 min  
 Response: 625360  
 Conc: 0.45 ng/ml



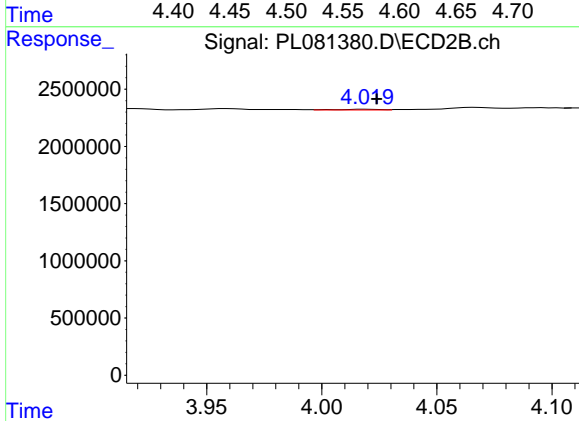
#6 beta-BHC  
 R.T.: 3.797 min  
 Delta R.T.: 0.002 min  
 Response: -38810  
 Conc: N.D.



#7 delta-BHC

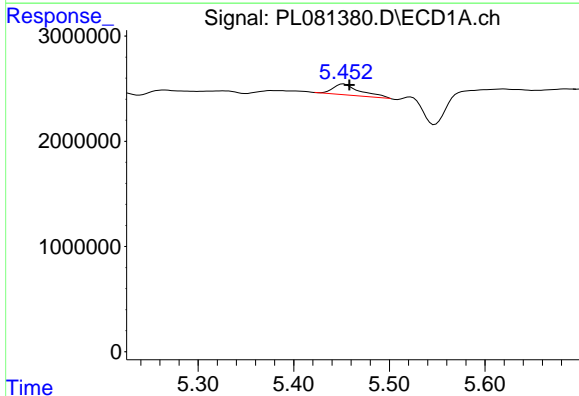
R.T.: 4.550 min  
 Delta R.T.: -0.009 min  
 Response: 1722790  
 Conc: 0.62 ng/ml

Instrument :  
 ECD\_L  
 ClientSampleId :



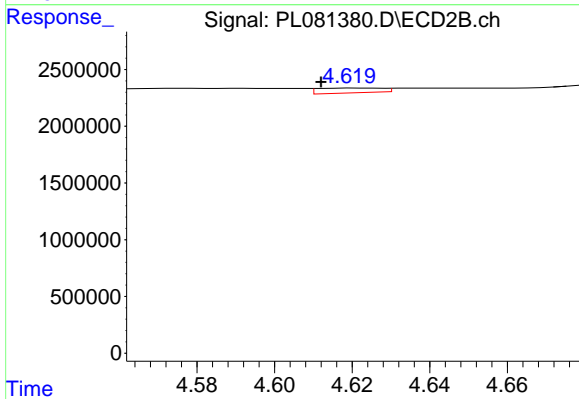
#7 delta-BHC

R.T.: 4.019 min  
 Delta R.T.: -0.005 min  
 Response: 85182  
 Conc: 0.03 ng/ml



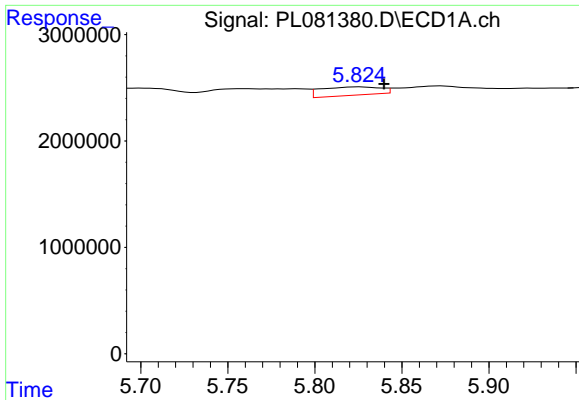
#8 Heptachlor epoxide

R.T.: 5.452 min  
 Delta R.T.: -0.006 min  
 Response: 1963795  
 Conc: 0.83 ng/ml



#8 Heptachlor epoxide

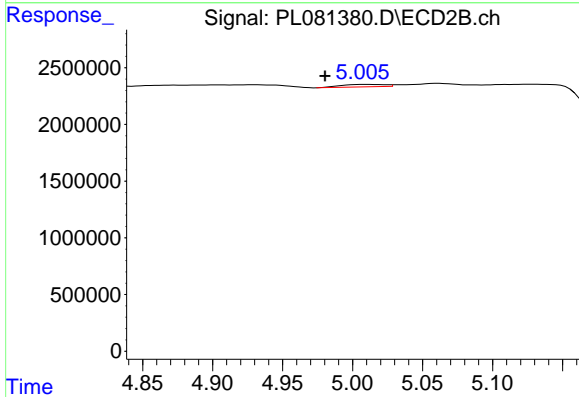
R.T.: 4.620 min  
 Delta R.T.: 0.008 min  
 Response: 488596  
 Conc: 0.20 ng/ml



#9 Endosulfan I

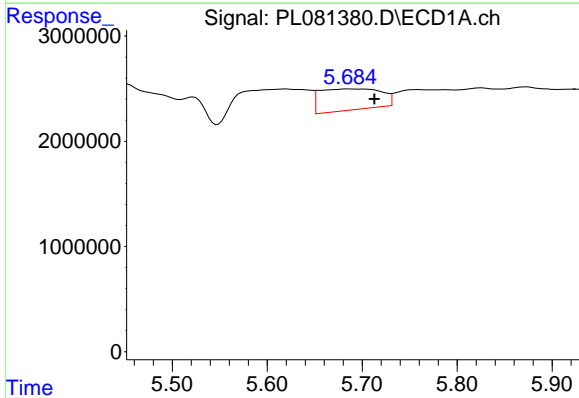
R.T.: 5.825 min  
 Delta R.T.: -0.014 min  
 Response: 1869823  
 Conc: 0.89 ng/ml

Instrument :  
 ECD\_L  
 ClientSampleId :



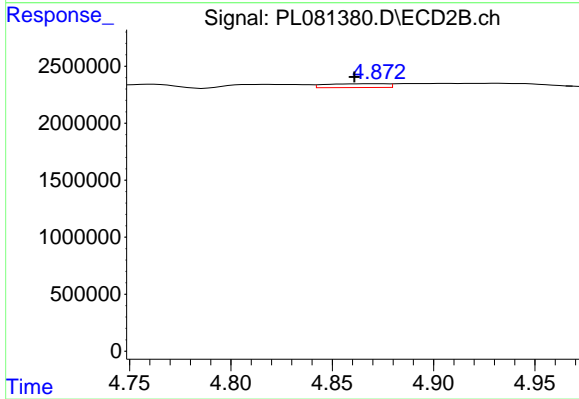
#9 Endosulfan I

R.T.: 5.007 min  
 Delta R.T.: 0.027 min  
 Response: 479187  
 Conc: 0.21 ng/ml



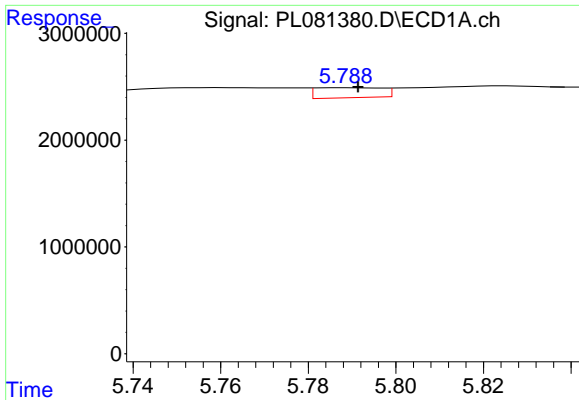
#10 gamma-Chlordane

R.T.: 5.686 min  
 Delta R.T.: -0.027 min  
 Response: 8999157  
 Conc: 3.94 ng/ml



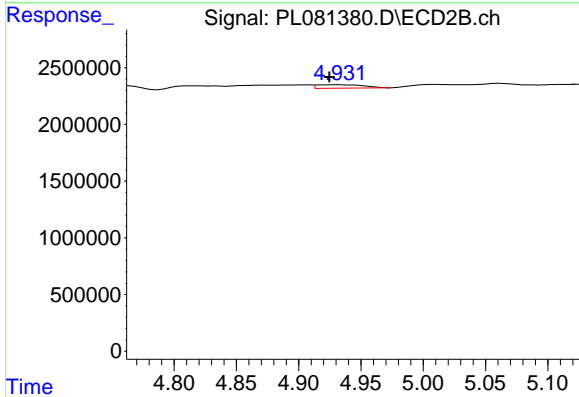
#10 gamma-Chlordane

R.T.: 4.873 min  
 Delta R.T.: 0.012 min  
 Response: 700361  
 Conc: 0.29 ng/ml

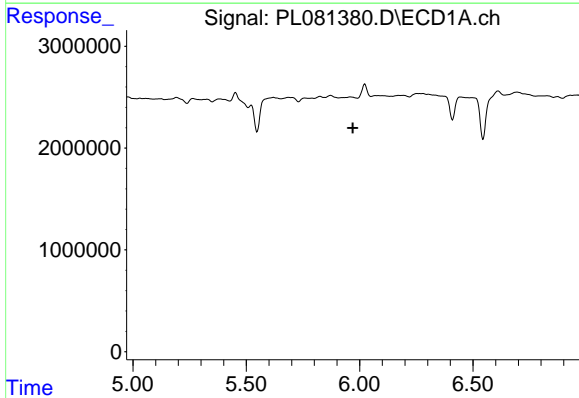


#11 alpha-Chlordane  
 R.T.: 5.789 min  
 Delta R.T.: -0.002 min  
 Response: 986214  
 Conc: 0.44 ng/ml

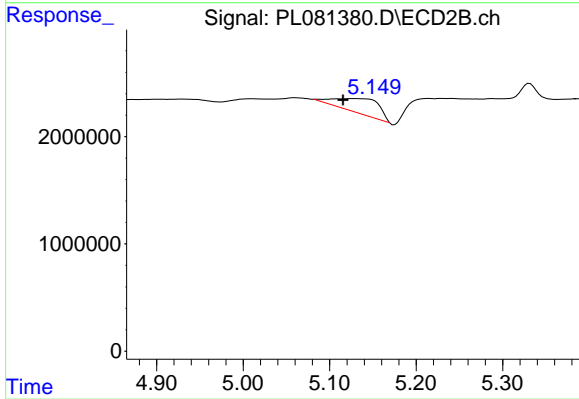
Instrument :  
 ECD\_L  
 ClientSampleId :



#11 alpha-Chlordane  
 R.T.: 4.932 min  
 Delta R.T.: 0.007 min  
 Response: 805586  
 Conc: 0.33 ng/ml

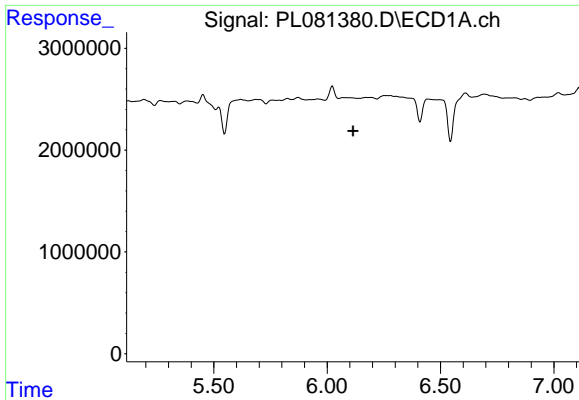


#12 4,4'-DDE  
 R.T.: 0.000 min  
 Exp R.T. : 5.970 min  
 Response: 0  
 Conc: N.D.



#12 4,4'-DDE  
 R.T.: 5.131 min  
 Delta R.T.: 0.015 min  
 Response: 4548275  
 Conc: 2.32 ng/ml

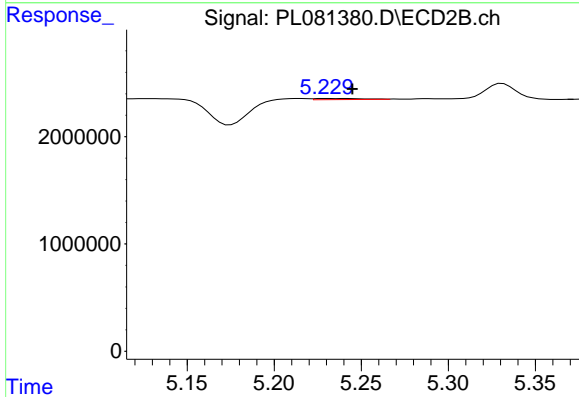




#13 Dieldrin

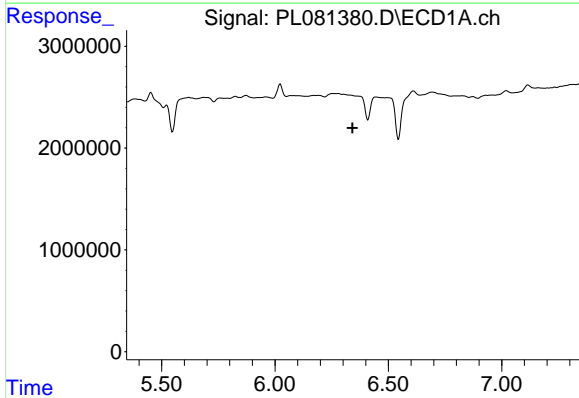
R.T.: 0.000 min  
 Exp R.T.: 6.114 min  
 Response: 0  
 Conc: N.D.

Instrument :  
 ECD\_L  
 ClientSampleId :



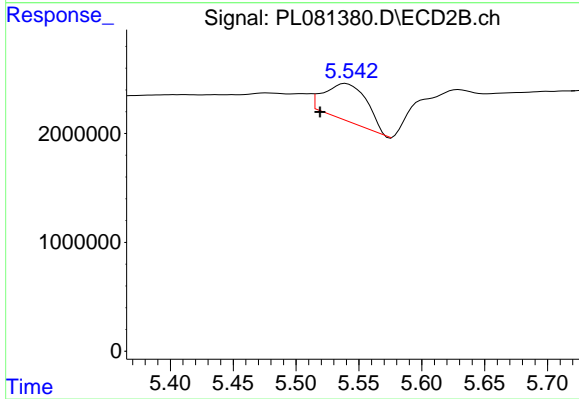
#13 Dieldrin

R.T.: 5.230 min  
 Delta R.T.: -0.015 min  
 Response: 194357  
 Conc: 0.09 ng/ml



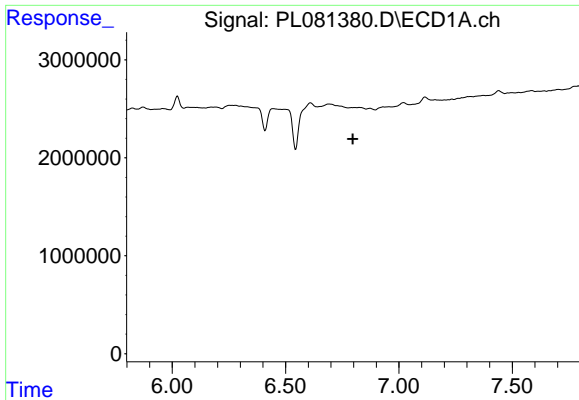
#14 Endrin

R.T.: 0.000 min  
 Exp R.T.: 6.342 min  
 Response: 0  
 Conc: N.D.



#14 Endrin

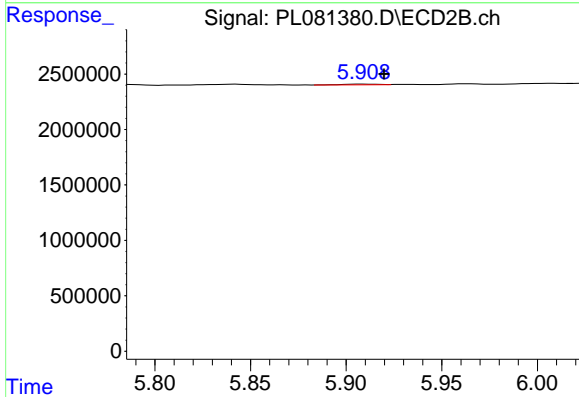
R.T.: 5.540 min  
 Delta R.T.: 0.020 min  
 Response: 7969069  
 Conc: 3.97 ng/ml



#17 4,4'-DDT

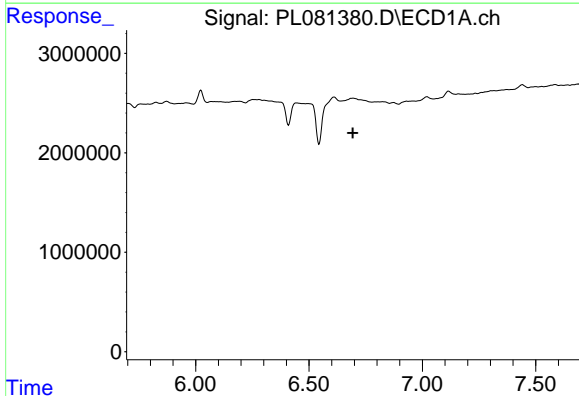
R.T.: 0.000 min  
 Exp R.T.: 6.797 min  
 Response: 0  
 Conc: N.D.

Instrument :  
 ECD\_L  
 ClientSampleId :



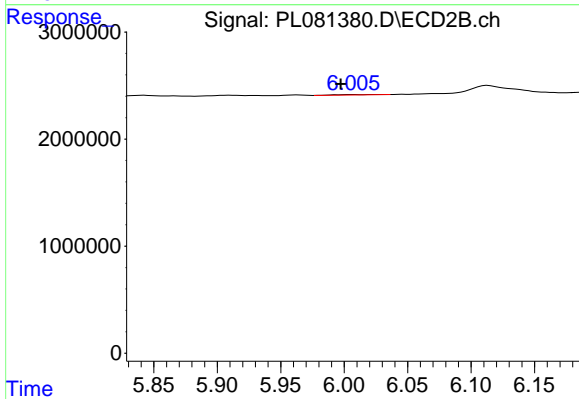
#17 4,4'-DDT

R.T.: 5.909 min  
 Delta R.T.: -0.011 min  
 Response: 92619  
 Conc: 0.06 ng/ml



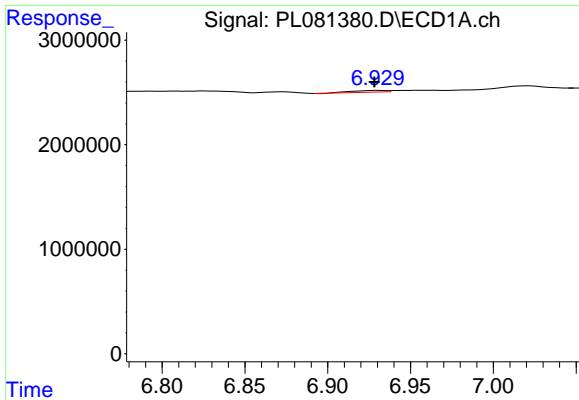
#18 Endrin aldehyde

R.T.: 0.000 min  
 Exp R.T.: 6.693 min  
 Response: 0  
 Conc: N.D.



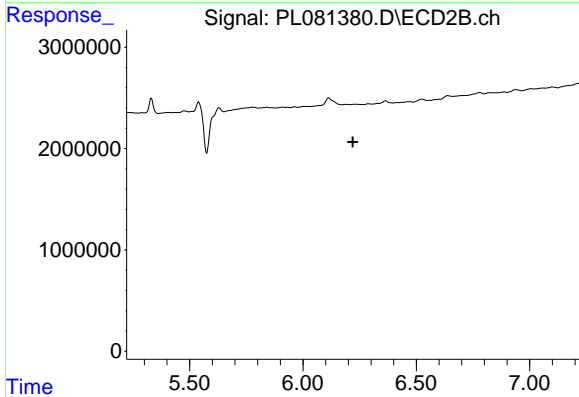
#18 Endrin aldehyde

R.T.: 6.007 min  
 Delta R.T.: 0.010 min  
 Response: 83011  
 Conc: 0.05 ng/ml

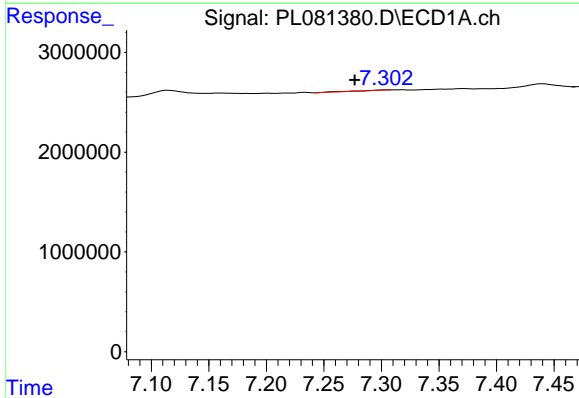


#19 Endosulfan Sulfate  
 R.T.: 6.930 min  
 Delta R.T.: 0.002 min  
 Response: 228688  
 Conc: 0.13 ng/ml

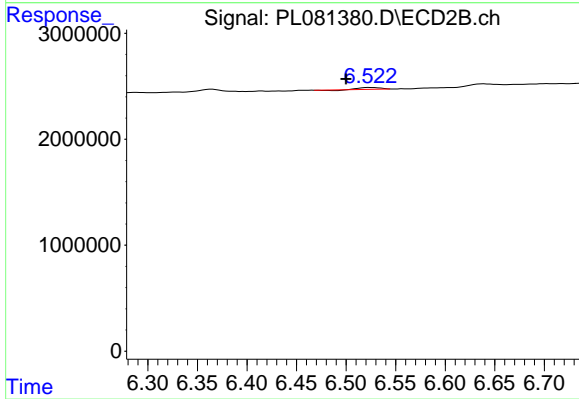
Instrument :  
 ECD\_L  
 ClientSampleId :



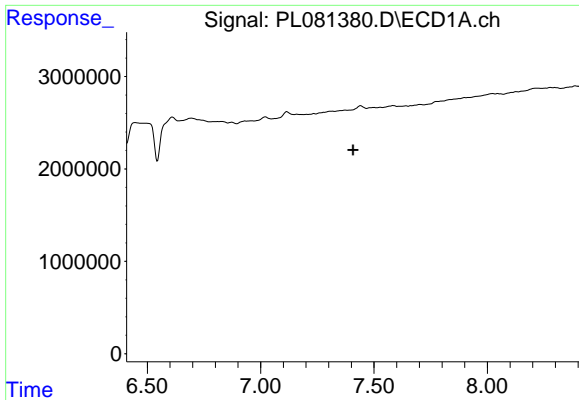
#19 Endosulfan Sulfate  
 R.T.: 6.236 min  
 Delta R.T.: 0.016 min  
 Response: -2806  
 Conc: N.D.



#20 Methoxychlor  
 R.T.: 7.304 min  
 Delta R.T.: 0.027 min  
 Response: 54268  
 Conc: 0.06 ng/ml



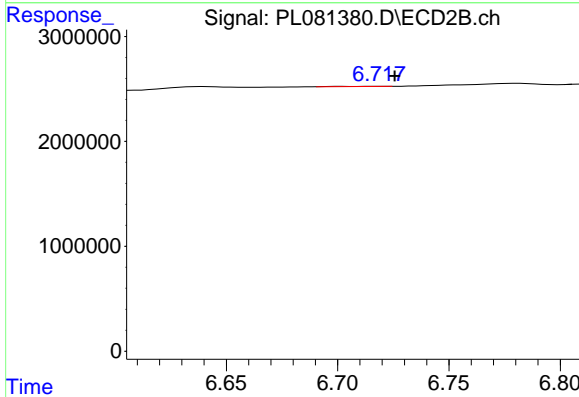
#20 Methoxychlor  
 R.T.: 6.524 min  
 Delta R.T.: 0.024 min  
 Response: 215253  
 Conc: 0.23 ng/ml



#21 Endrin ketone

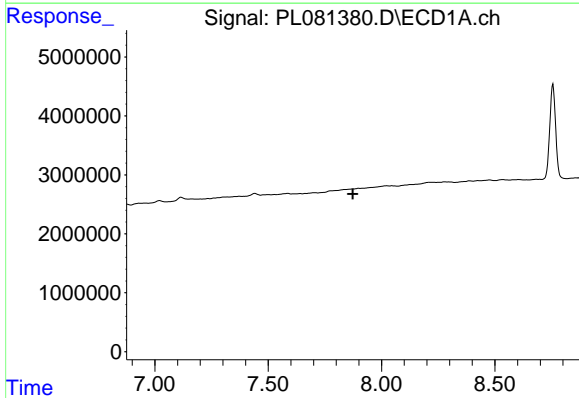
R.T.: 0.000 min  
 Exp R.T.: 7.408 min  
 Response: 0  
 Conc: N.D.

Instrument :  
 ECD\_L  
 ClientSampleId :



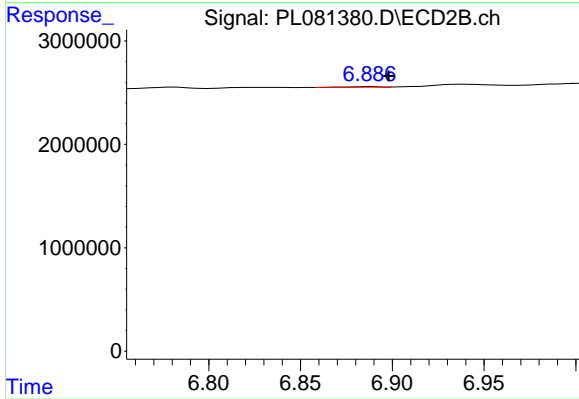
#21 Endrin ketone

R.T.: 6.719 min  
 Delta R.T.: -0.007 min  
 Response: 27201  
 Conc: 0.01 ng/ml



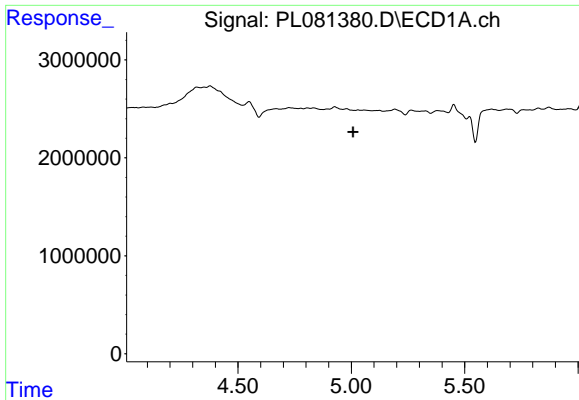
#22 Mirex

R.T.: 7.899 min  
 Delta R.T.: 0.025 min  
 Response: -6218  
 Conc: N.D.



#22 Mirex

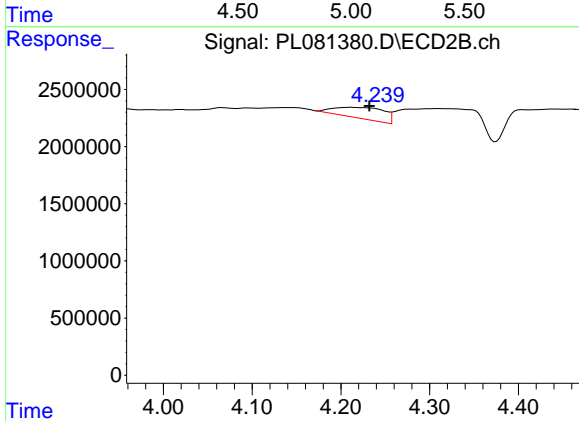
R.T.: 6.888 min  
 Delta R.T.: -0.010 min  
 Response: 66093  
 Conc: 0.03 ng/ml



#24 Chlordane-2

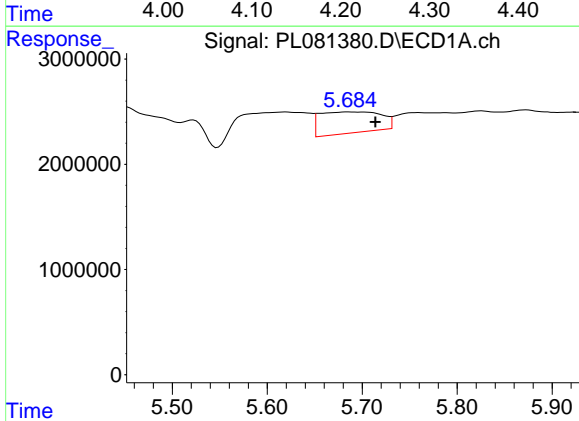
R.T.: 0.000 min  
 Exp R.T.: 5.008 min  
 Response: 0  
 Conc: N.D.

Instrument :  
 ECD\_L  
 ClientSampleId :



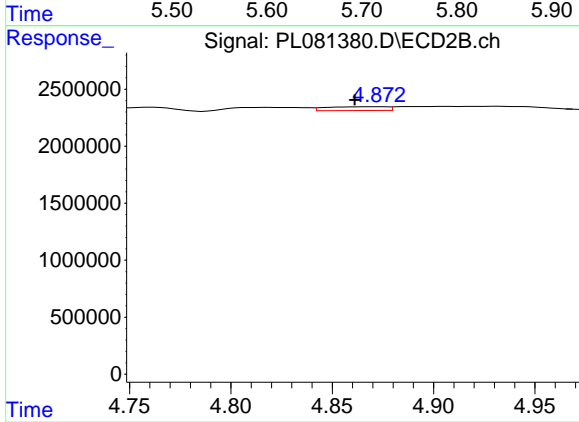
#24 Chlordane-2

R.T.: 4.210 min  
 Delta R.T.: -0.022 min  
 Response: 3764459  
 Conc: 36.77 ng/ml



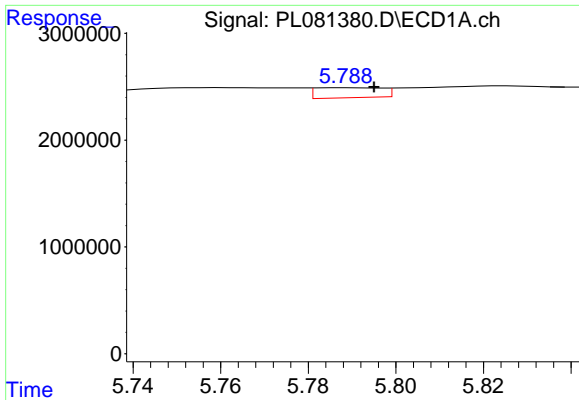
#25 Chlordane-3

R.T.: 5.686 min  
 Delta R.T.: -0.028 min  
 Response: 8999157  
 Conc: 24.60 ng/ml



#25 Chlordane-3

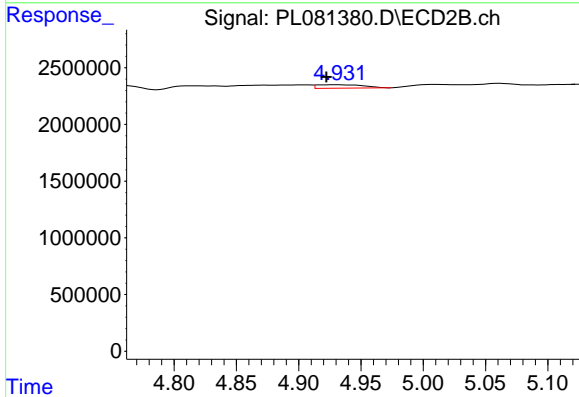
R.T.: 4.873 min  
 Delta R.T.: 0.012 min  
 Response: 700361  
 Conc: 2.59 ng/ml



#26 Chlordane-4

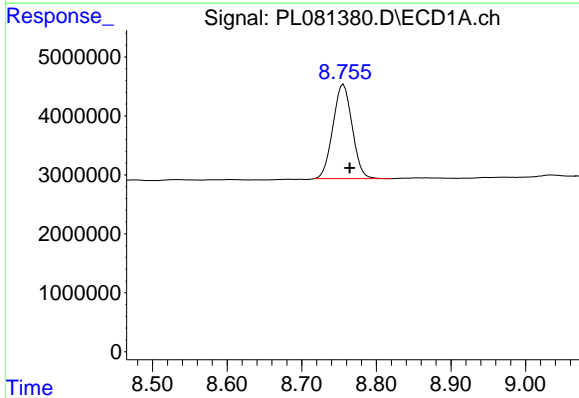
R.T.: 5.789 min  
 Delta R.T.: -0.006 min  
 Response: 986214  
 Conc: 2.24 ng/ml

Instrument :  
 ECD\_L  
 ClientSampleId :



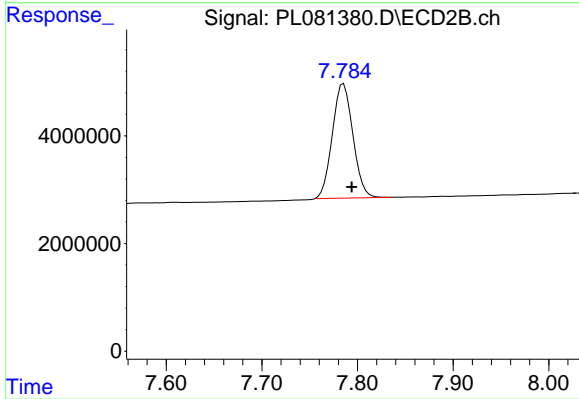
#26 Chlordane-4

R.T.: 4.932 min  
 Delta R.T.: 0.010 min  
 Response: 805586  
 Conc: 2.87 ng/ml



#28 Decachlorobiphenyl

R.T.: 8.756 min  
 Delta R.T.: -0.008 min  
 Response: 28676944  
 Conc: 18.81 ng/ml



#28 Decachlorobiphenyl

R.T.: 7.785 min  
 Delta R.T.: -0.008 min  
 Response: 31710469  
 Conc: 16.55 ng/ml