

Data Path : Z:\pestpcbsrv\HPCHEM1\ECD\_L\Data\PL031119\  
 Data File : PL045699.D  
 Signal(s) : Signal #1: ECD1A.ch Signal #2: ECD2B.ch  
 Acq On : 11 Mar 2019 22:13  
 Operator : AJ\SJ  
 Sample : PSTDCCC050  
 Misc :  
 ALS Vial : 100 Sample Multiplier: 1

Instrument :  
 ECD\_L  
 ClientSampleId :  
 PSTDCCC050

Integration File signal 1: autoint1.e  
 Integration File signal 2: autoint2.e  
 Quant Time: Mar 12 01:15:05 2019  
 Quant Method : Z:\pestpcbsrv\HPCHEM1\ECD\_L\methods\PL022719.M  
 Quant Title : GC Extractables  
 QLast Update : Wed Feb 27 17:00:03 2019  
 Response via : Initial Calibration  
 Integrator: ChemStation

Volume Inj. : 1 µl  
 Signal #1 Phase : ZB-MR2 Signal #2 Phase: ZB-MR1  
 Signal #1 Info : 30M x 0.32mm x0.2 Signal #2 Info : 30M x 0.32mm x0.5µm

	Compound	RT#1	RT#2	Resp#1	Resp#2	ng/ml	ng/ml
-----							
System Monitoring Compounds							
1)	SA Tetrachlo...	3.363	3.982	330.5E6	103.1E6	48.044	48.164
28)	SA Decachlor...	8.045	9.040	377.1E6	108.1E6	45.073	47.325
Target Compounds							
2)	A alpha-BHC	3.793	4.372	540.1E6	149.2E6	48.626	49.106
3)	MA gamma-BHC...	4.070	4.657	493.5E6	138.0E6	48.823	48.845
4)	MA Heptachlor	4.358	5.163	506.2E6	142.1E6	47.966	47.778
5)	MB Aldrin	4.598	5.468	479.1E6	131.3E6	49.256	48.595
6)	B beta-BHC	4.322	4.829	203.0E6	62238878	47.369	49.009
7)	B delta-BHC	4.519	5.045	473.7E6	119.5E6	49.566	55.562
8)	B Heptachlo...	5.035	5.854	447.8E6	122.3E6	47.978	50.912
9)	A Endosulfan I	5.368	6.210	427.1E6	118.6E6	47.779	47.641
10)	B gamma-Chl...	5.258	6.088	464.4E6	128.8E6	47.448	48.013
11)	B alpha-Chl...	5.315	6.160	457.4E6	127.8E6	47.172	47.383
12)	B 4,4'-DDE	5.483	6.319	420.4E6	112.9E6	47.893	48.345
13)	MA Dieldrin	5.608	6.467	461.9E6	123.3E6	48.330	47.993
14)	MA Endrin	5.861	6.684	380.6E6	96567046	42.261	42.442
15)	B Endosulfa...	6.136	6.894	408.1E6	110.9E6	47.073	47.141
16)	A 4,4'-DDD	5.994	6.808	359.7E6	95751545	49.125	49.791
17)	MA 4,4'-DDT	6.229	7.106	325.1E6	88458966	43.347	44.825
18)	B Endrin al...	6.302	7.018	347.2E6	97236318	47.496	47.567
19)	B Endosulfa...	6.514	7.242	372.5E6	105.8E6	45.831	47.043
20)	A Methoxychlor	6.774	7.565	180.3E6	52717736	41.060	42.950
21)	B Endrin ke...	6.997	7.711	460.5E6	118.1E6	49.984	49.674
22)	Mirex	7.175	8.164	332.7E6	92220904	44.711	46.303
-----							

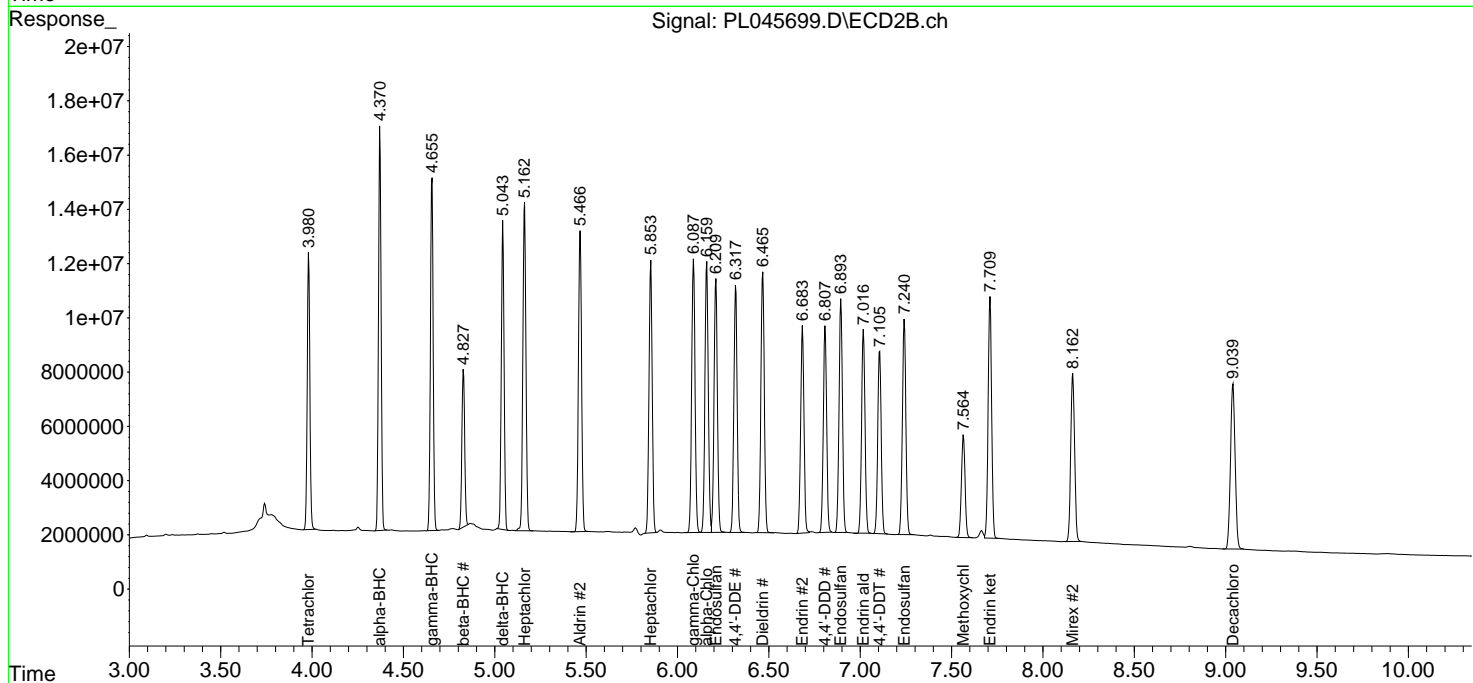
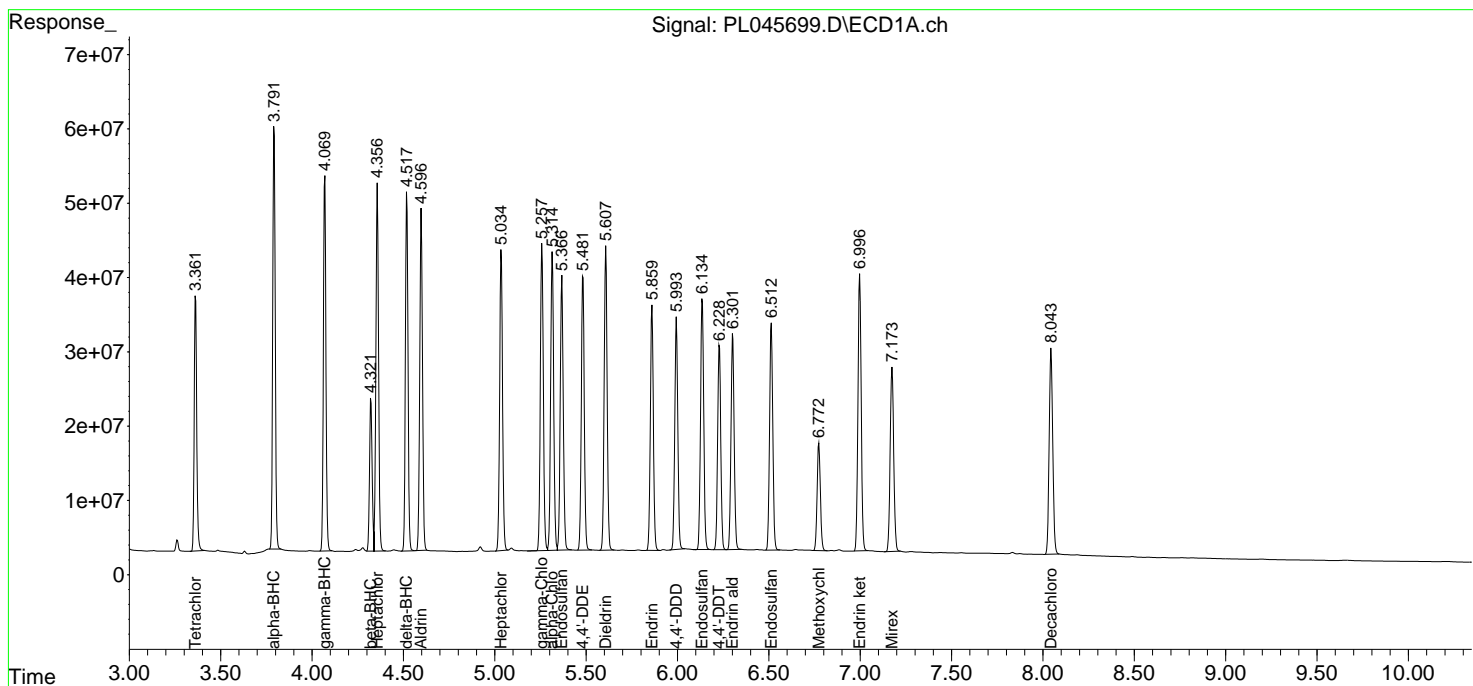
(f)=RT Delta > 1/2 Window (#)=Amounts differ by > 25% (m)=manual int.

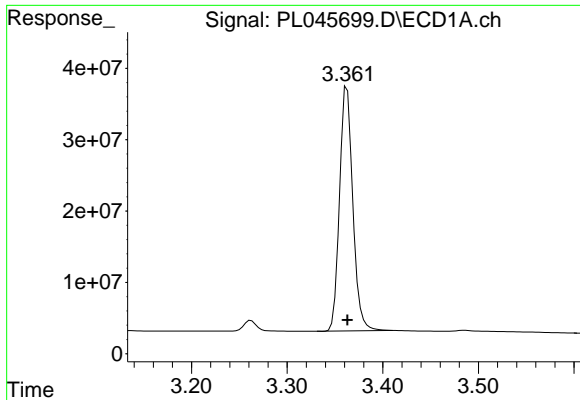
Data Path : Z:\pestpcbsrv\HPCHEM1\ECD\_L\Data\PL031119\  
 Data File : PL045699.D  
 Signal(s) : Signal #1: ECD1A.ch Signal #2: ECD2B.ch  
 Acq On : 11 Mar 2019 22:13  
 Operator : AJ\SJ  
 Sample : PSTDCCC050  
 Misc :  
 ALS Vial : 100 Sample Multiplier: 1

Instrument :  
 ECD\_L  
 ClientSampled :  
 PSTDCCC050

Integration File signal 1: autoint1.e  
 Integration File signal 2: autoint2.e  
 Quant Time: Mar 12 01:15:05 2019  
 Quant Method : Z:\pestpcbsrv\HPCHEM1\ECD\_L\methods\PL022719.M  
 Quant Title : GC Extractables  
 QLast Update : Wed Feb 27 17:00:03 2019  
 Response via : Initial Calibration  
 Integrator: ChemStation

Volume Inj. : 1 µl  
 Signal #1 Phase : ZB-MR2 Signal #2 Phase: ZB-MR1  
 Signal #1 Info : 30M x 0.32mm x0.2 Signal #2 Info : 30M x 0.32mm x0.5µm

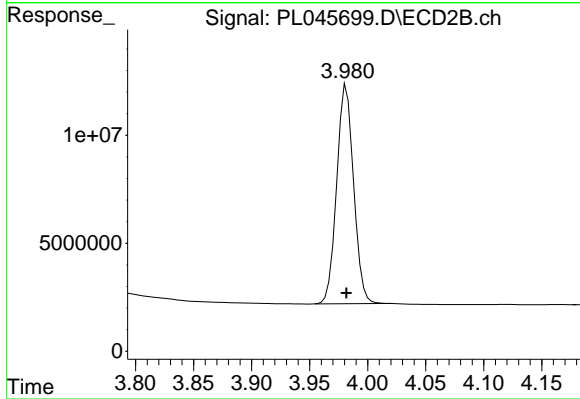




#1 Tetrachloro-m-xylene

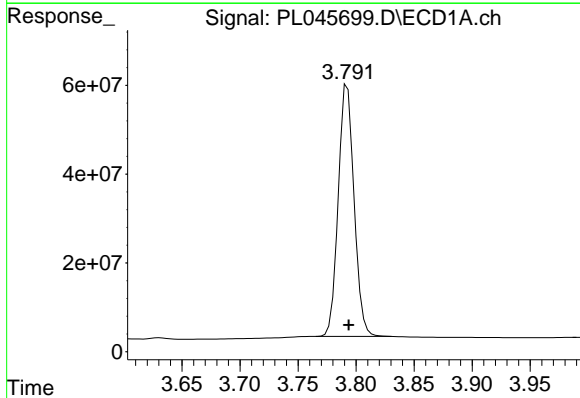
R.T.: 3.363 min  
 Delta R.T.: 0.000 min  
 Response: 330506531  
 Conc: 48.04 ng/ml

Instrument :  
 ECD\_L  
 ClientSampleId :  
 PSTDCCC050



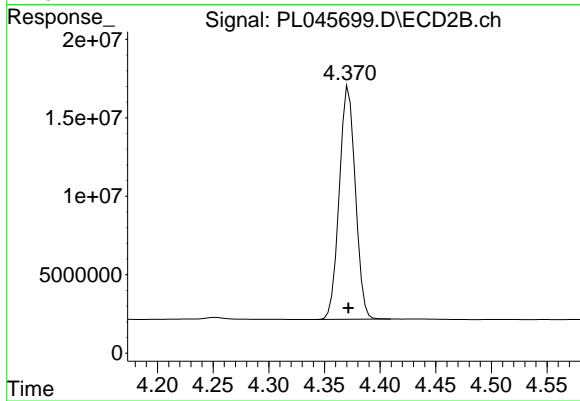
#1 Tetrachloro-m-xylene

R.T.: 3.982 min  
 Delta R.T.: 0.000 min  
 Response: 103145691  
 Conc: 48.16 ng/ml



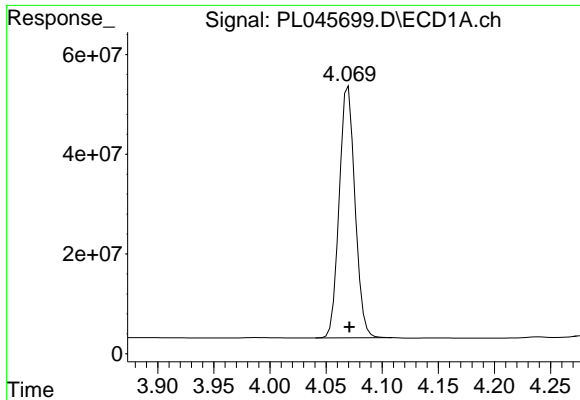
#2 alpha-BHC

R.T.: 3.793 min  
 Delta R.T.: 0.000 min  
 Response: 540100837  
 Conc: 48.63 ng/ml



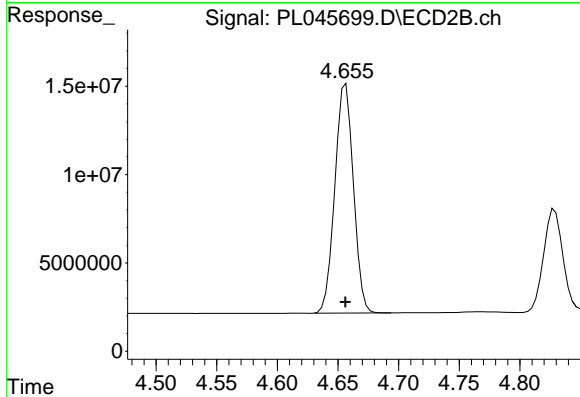
#2 alpha-BHC

R.T.: 4.372 min  
 Delta R.T.: 0.000 min  
 Response: 149216654  
 Conc: 49.11 ng/ml

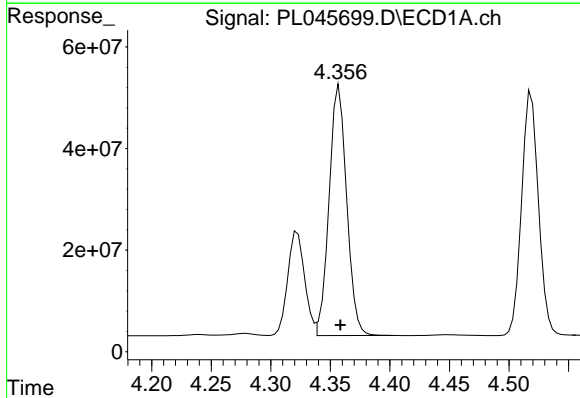


#3 gamma-BHC (Lindane)  
 R.T.: 4.070 min  
 Delta R.T.: 0.000 min  
 Response: 493463528  
 Conc: 48.82 ng/ml

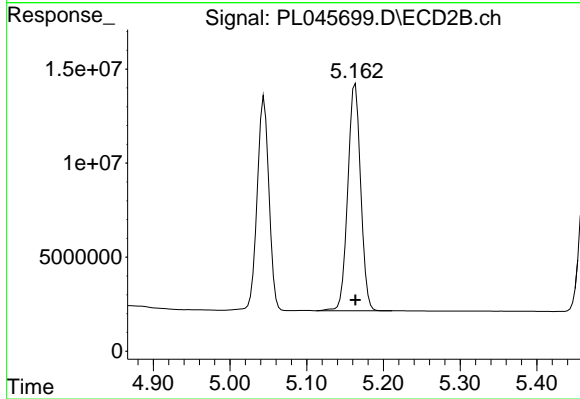
Instrument :  
 ECD\_L  
 ClientSampleId :  
 PSTDCCC050



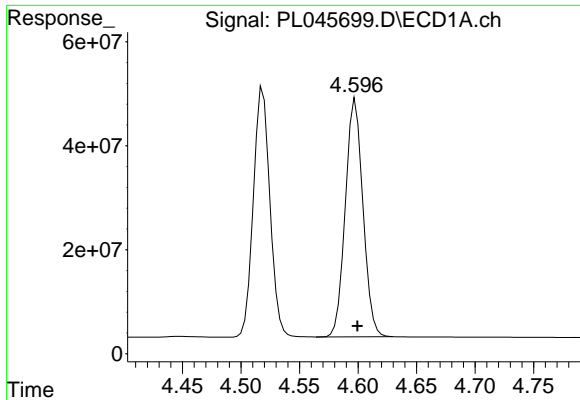
#3 gamma-BHC (Lindane)  
 R.T.: 4.657 min  
 Delta R.T.: 0.000 min  
 Response: 137967480  
 Conc: 48.84 ng/ml



#4 Heptachlor  
 R.T.: 4.358 min  
 Delta R.T.: 0.000 min  
 Response: 506151123  
 Conc: 47.97 ng/ml

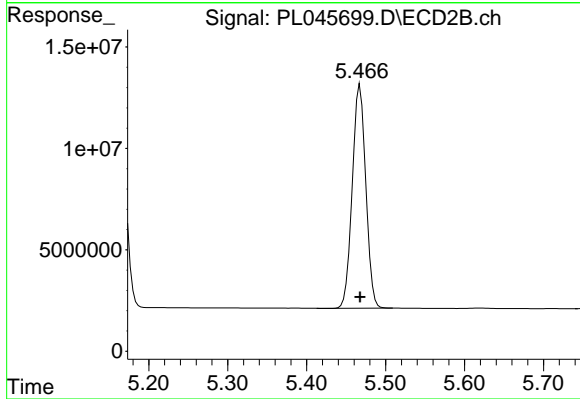


#4 Heptachlor  
 R.T.: 5.163 min  
 Delta R.T.: 0.000 min  
 Response: 142136502  
 Conc: 47.78 ng/ml

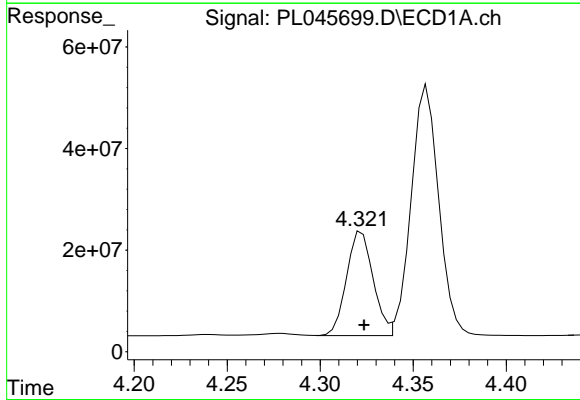


#5 Aldrin  
 R.T.: 4.598 min  
 Delta R.T.: -0.001 min  
 Response: 479083505  
 Conc: 49.26 ng/ml

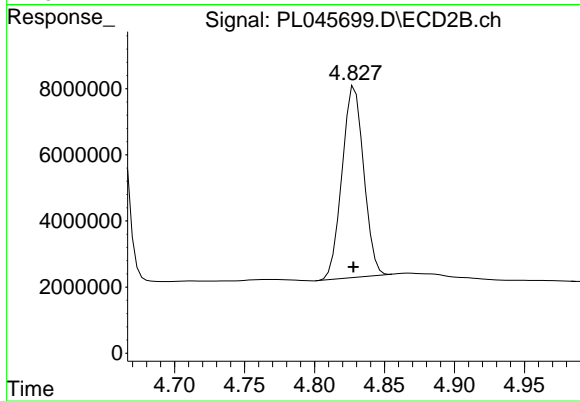
Instrument :  
 ECD\_L  
 ClientSampleId :  
 PSTDCCC050



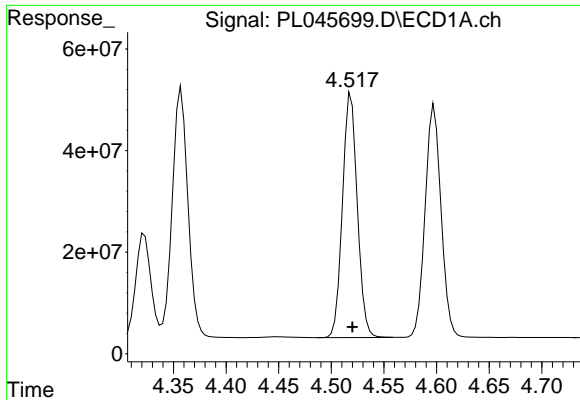
#5 Aldrin  
 R.T.: 5.468 min  
 Delta R.T.: 0.000 min  
 Response: 131253973  
 Conc: 48.60 ng/ml



#6 beta-BHC  
 R.T.: 4.322 min  
 Delta R.T.: -0.001 min  
 Response: 203028525  
 Conc: 47.37 ng/ml

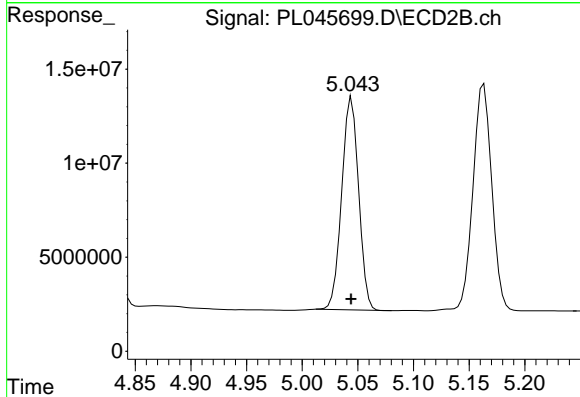


#6 beta-BHC  
 R.T.: 4.829 min  
 Delta R.T.: 0.001 min  
 Response: 62238878  
 Conc: 49.01 ng/ml

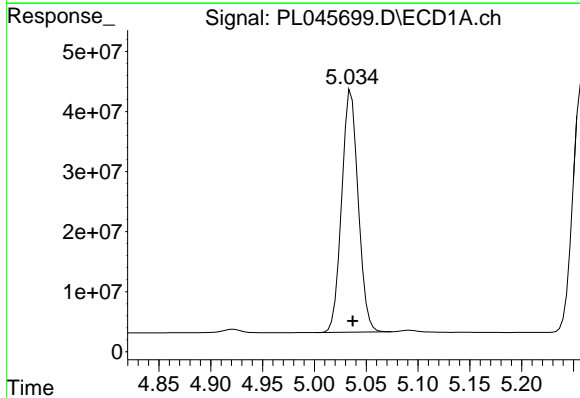


#7 delta-BHC  
 R.T.: 4.519 min  
 Delta R.T.: -0.001 min  
 Response: 473747941  
 Conc: 49.57 ng/ml

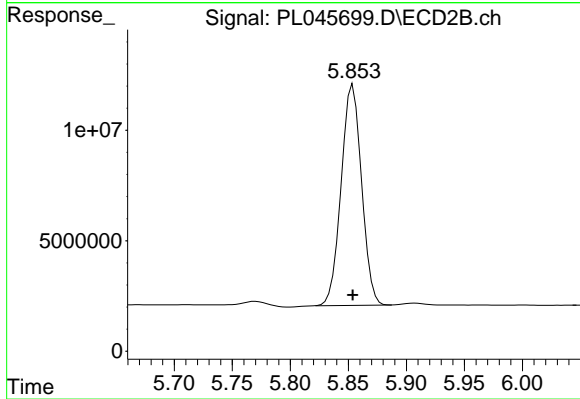
Instrument :  
 ECD\_L  
 ClientSampleId :  
 PSTDCCC050



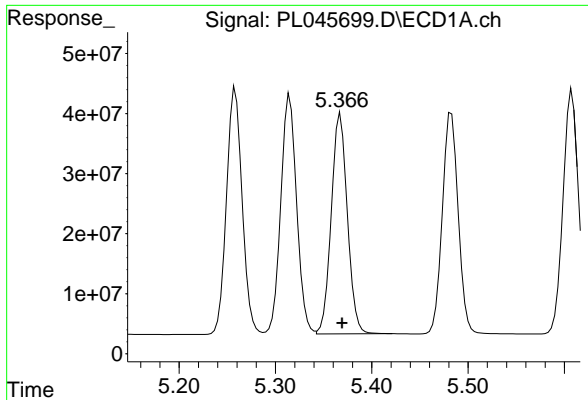
#7 delta-BHC  
 R.T.: 5.045 min  
 Delta R.T.: 0.000 min  
 Response: 119507846  
 Conc: 55.56 ng/ml



#8 Heptachlor epoxide  
 R.T.: 5.035 min  
 Delta R.T.: -0.002 min  
 Response: 447785224  
 Conc: 47.98 ng/ml



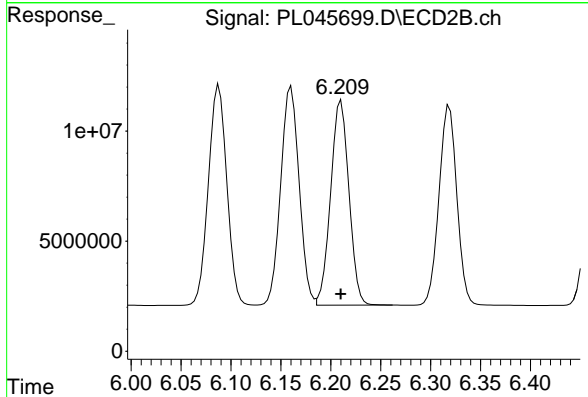
#8 Heptachlor epoxide  
 R.T.: 5.854 min  
 Delta R.T.: 0.000 min  
 Response: 122287435  
 Conc: 50.91 ng/ml



#9 Endosulfan I

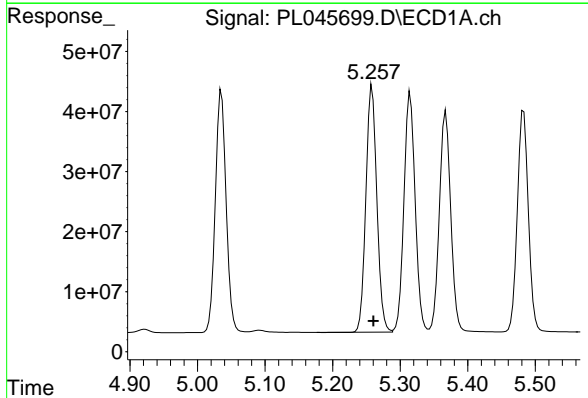
R.T.: 5.368 min  
 Delta R.T.: -0.002 min  
 Response: 427064653  
 Conc: 47.78 ng/ml

Instrument :  
 ECD\_L  
 ClientSampleId :  
 PSTDCCC050



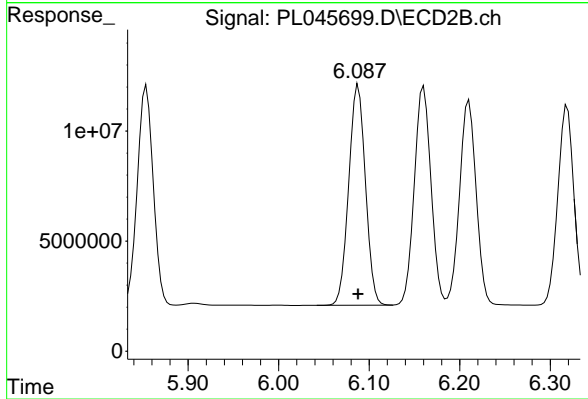
#9 Endosulfan I

R.T.: 6.210 min  
 Delta R.T.: 0.000 min  
 Response: 118640664  
 Conc: 47.64 ng/ml



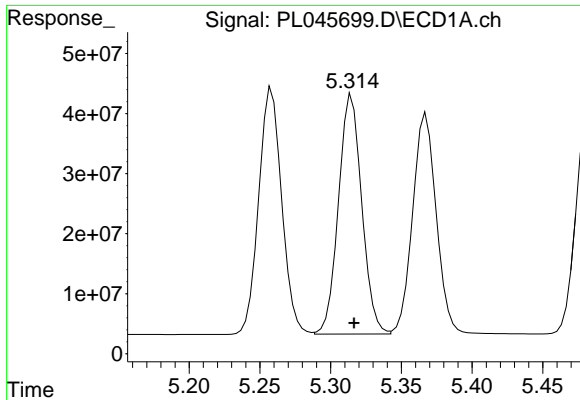
#10 gamma-Chlordane

R.T.: 5.258 min  
 Delta R.T.: -0.002 min  
 Response: 464372261  
 Conc: 47.45 ng/ml



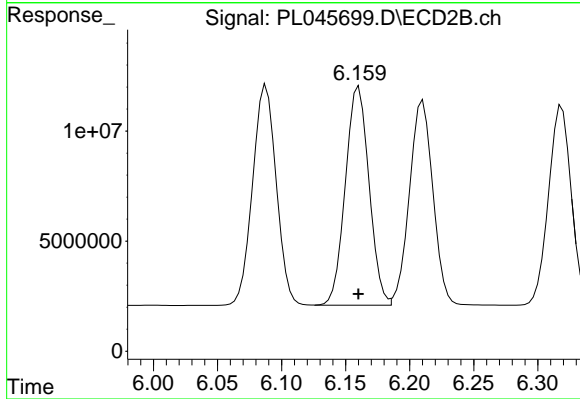
#10 gamma-Chlordane

R.T.: 6.088 min  
 Delta R.T.: 0.000 min  
 Response: 128816982  
 Conc: 48.01 ng/ml

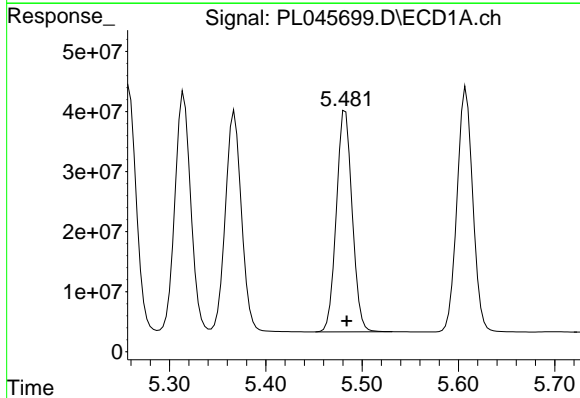


#11 alpha-Chlordane  
 R.T.: 5.315 min  
 Delta R.T.: -0.002 min  
 Response: 457423638  
 Conc: 47.17 ng/ml

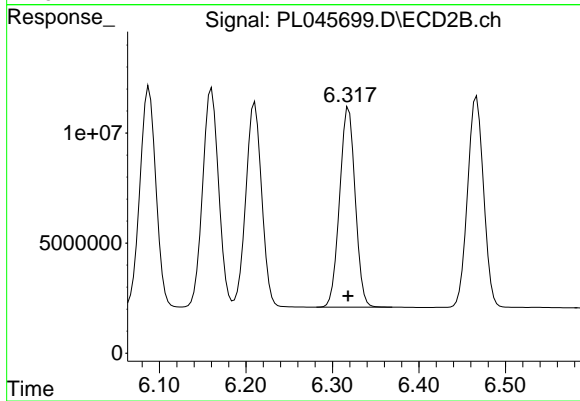
Instrument :  
 ECD\_L  
 ClientSampleId :  
 PSTDCCC050



#11 alpha-Chlordane  
 R.T.: 6.160 min  
 Delta R.T.: 0.000 min  
 Response: 127824071  
 Conc: 47.38 ng/ml

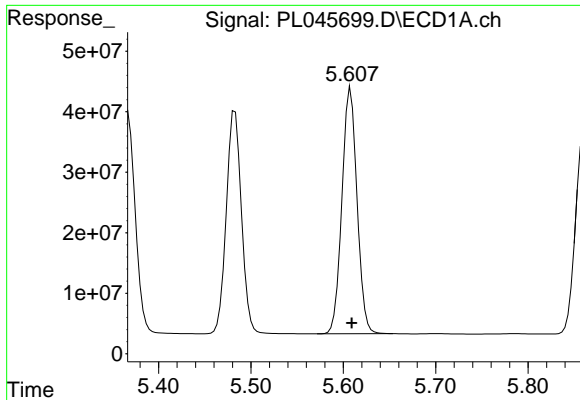


#12 4,4'-DDE  
 R.T.: 5.483 min  
 Delta R.T.: -0.001 min  
 Response: 420409641  
 Conc: 47.89 ng/ml



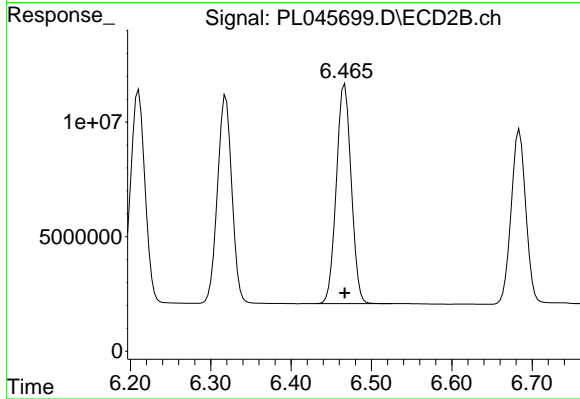
#12 4,4'-DDE  
 R.T.: 6.319 min  
 Delta R.T.: 0.000 min  
 Response: 112929300  
 Conc: 48.35 ng/ml



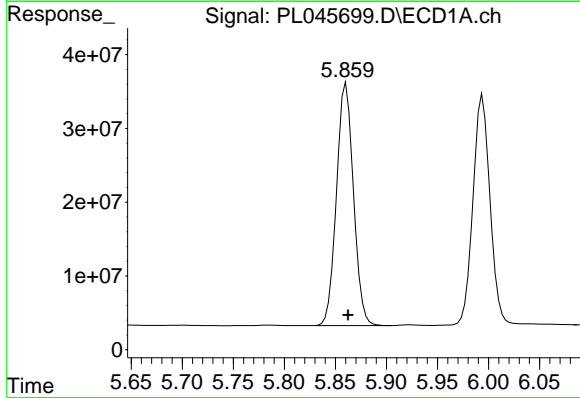


#13 Dieldrin  
 R.T.: 5.608 min  
 Delta R.T.: -0.001 min  
 Response: 461930073  
 Conc: 48.33 ng/ml

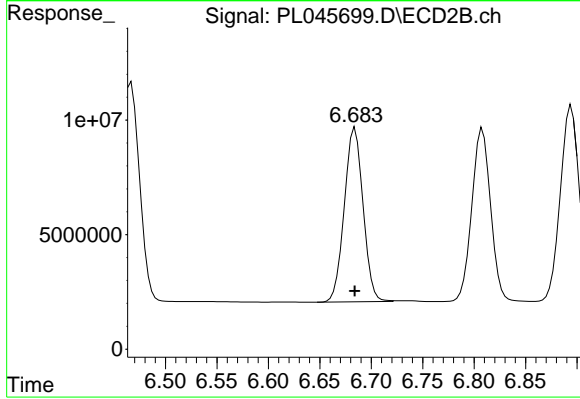
Instrument :  
 ECD\_L  
 ClientSampleId :  
 PSTDCCC050



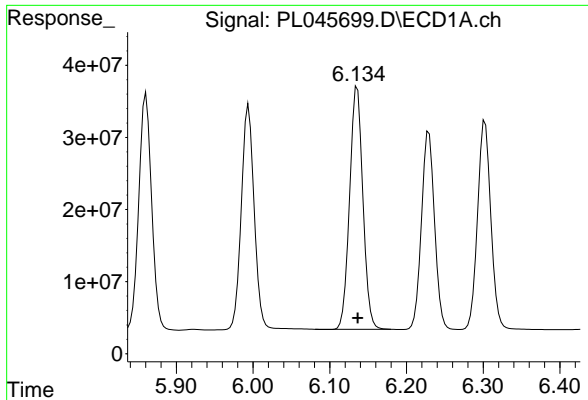
#13 Dieldrin  
 R.T.: 6.467 min  
 Delta R.T.: 0.000 min  
 Response: 123329641  
 Conc: 47.99 ng/ml



#14 Endrin  
 R.T.: 5.861 min  
 Delta R.T.: -0.002 min  
 Response: 380593484  
 Conc: 42.26 ng/ml

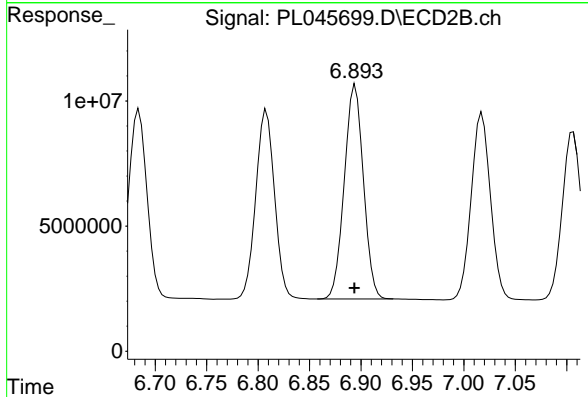


#14 Endrin  
 R.T.: 6.684 min  
 Delta R.T.: 0.000 min  
 Response: 96567046  
 Conc: 42.44 ng/ml

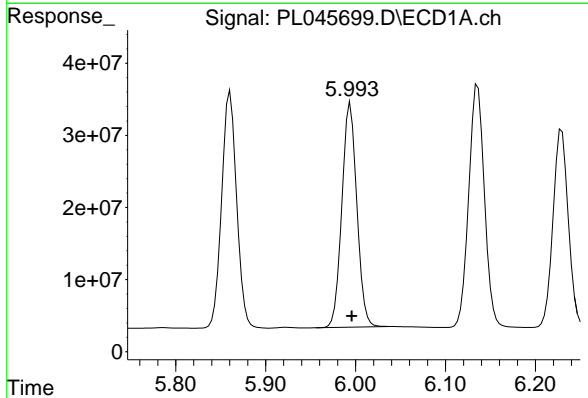


#15 Endosulfan II  
R.T.: 6.136 min  
Delta R.T.: 0.000 min  
Response: 408056247  
Conc: 47.07 ng/ml

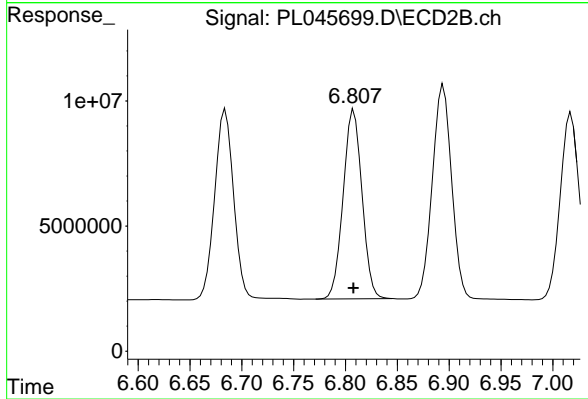
Instrument :  
ECD\_L  
ClientSampleId :  
PSTDCCC050



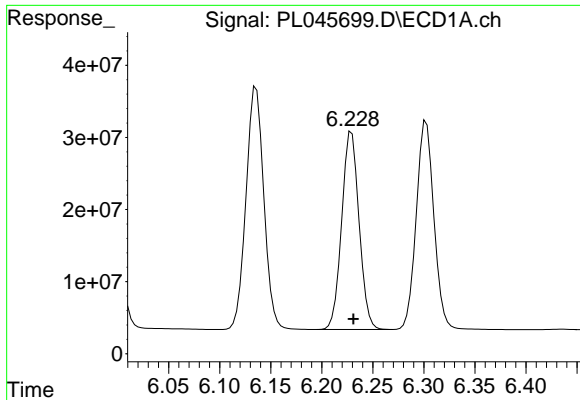
#15 Endosulfan II  
R.T.: 6.894 min  
Delta R.T.: 0.000 min  
Response: 110859026  
Conc: 47.14 ng/ml



#16 4,4'-DDD  
R.T.: 5.994 min  
Delta R.T.: -0.001 min  
Response: 359682960  
Conc: 49.12 ng/ml

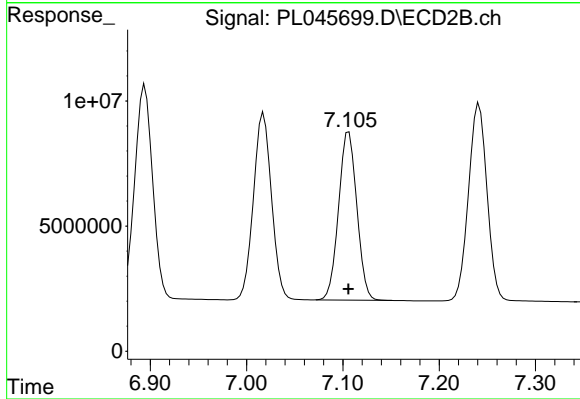


#16 4,4'-DDD  
R.T.: 6.808 min  
Delta R.T.: 0.000 min  
Response: 95751545  
Conc: 49.79 ng/ml

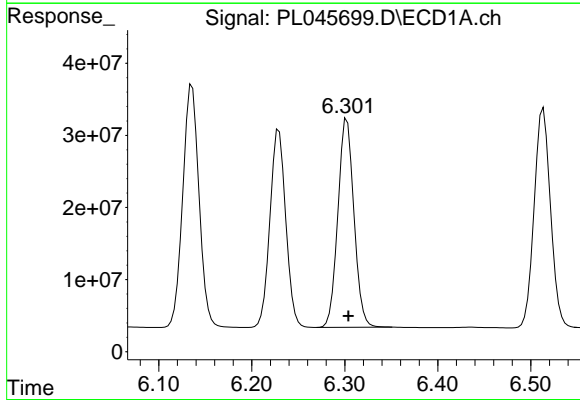


#17 4,4'-DDT  
 R.T.: 6.229 min  
 Delta R.T.: -0.002 min  
 Response: 325109919  
 Conc: 43.35 ng/ml

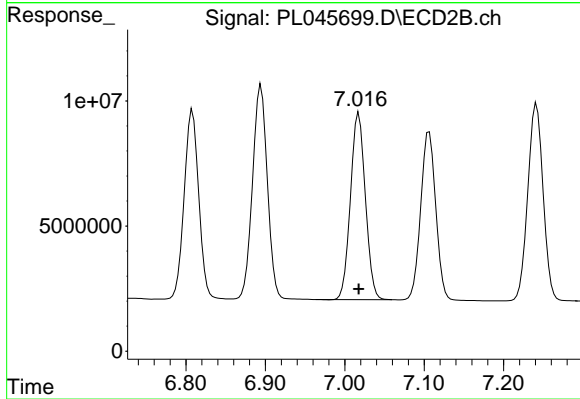
Instrument :  
 ECD\_L  
 ClientSampleId :  
 PSTDCCC050



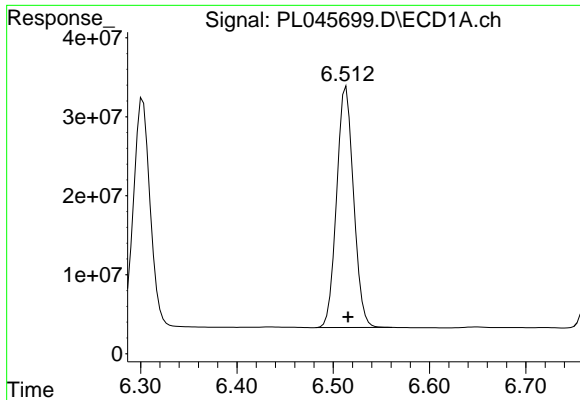
#17 4,4'-DDT  
 R.T.: 7.106 min  
 Delta R.T.: 0.000 min  
 Response: 88458966  
 Conc: 44.82 ng/ml



#18 Endrin aldehyde  
 R.T.: 6.302 min  
 Delta R.T.: -0.001 min  
 Response: 347174234  
 Conc: 47.50 ng/ml

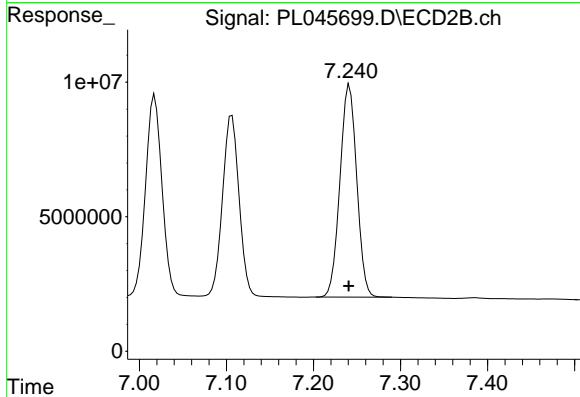


#18 Endrin aldehyde  
 R.T.: 7.018 min  
 Delta R.T.: 0.000 min  
 Response: 97236318  
 Conc: 47.57 ng/ml

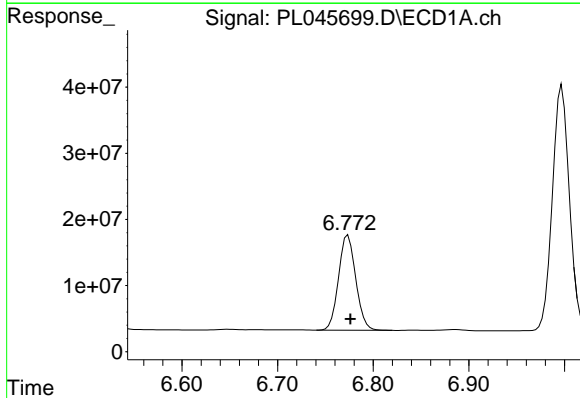


#19 Endosulfan Sulfate  
 R.T.: 6.514 min  
 Delta R.T.: -0.002 min  
 Response: 372522137  
 Conc: 45.83 ng/ml

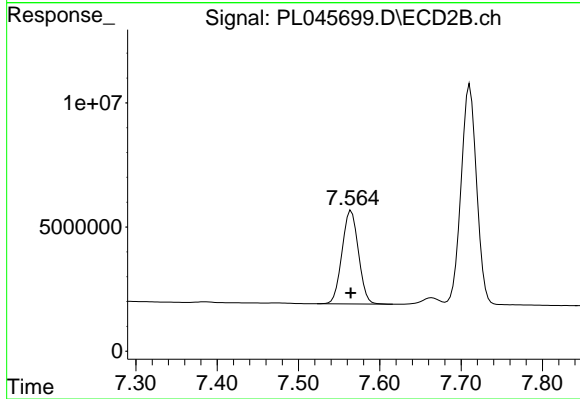
Instrument :  
 ECD\_L  
 ClientSampleId :  
 PSTDCCC050



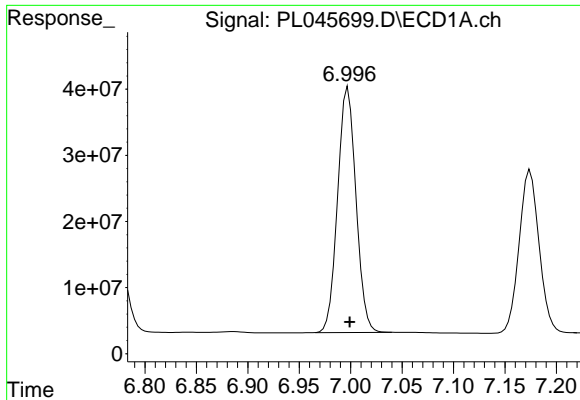
#19 Endosulfan Sulfate  
 R.T.: 7.242 min  
 Delta R.T.: 0.000 min  
 Response: 105823423  
 Conc: 47.04 ng/ml



#20 Methoxychlor  
 R.T.: 6.774 min  
 Delta R.T.: -0.003 min  
 Response: 180323228  
 Conc: 41.06 ng/ml

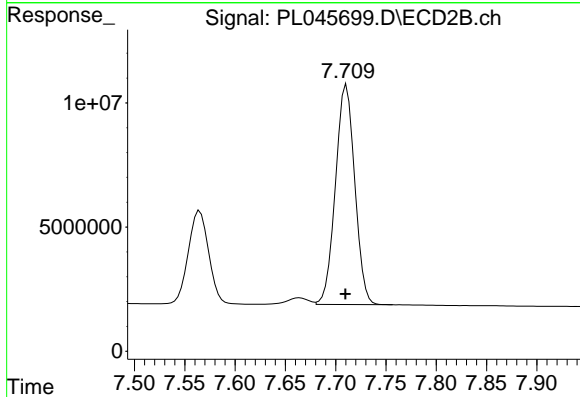


#20 Methoxychlor  
 R.T.: 7.565 min  
 Delta R.T.: 0.000 min  
 Response: 52717736  
 Conc: 42.95 ng/ml

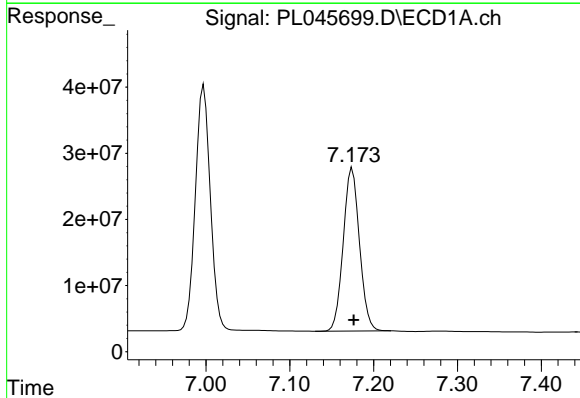


#21 Endrin ketone  
 R.T.: 6.997 min  
 Delta R.T.: -0.002 min  
 Response: 460496099  
 Conc: 49.98 ng/ml

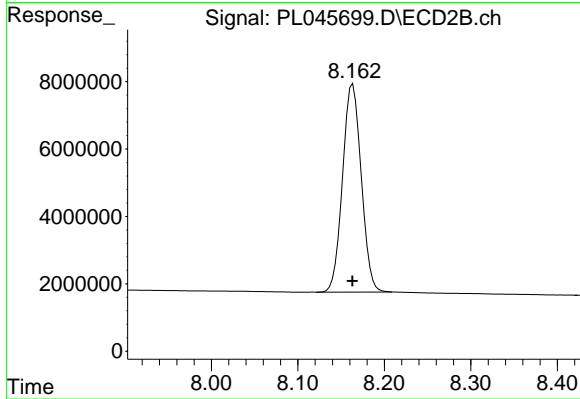
Instrument :  
 ECD\_L  
 ClientSampleId :  
 PSTDCCC050



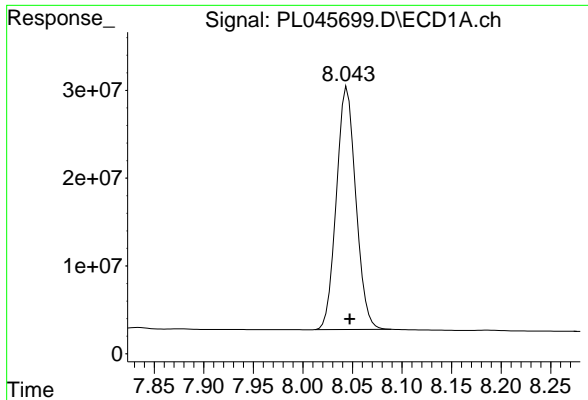
#21 Endrin ketone  
 R.T.: 7.711 min  
 Delta R.T.: 0.001 min  
 Response: 118144597  
 Conc: 49.67 ng/ml



#22 Mirex  
 R.T.: 7.175 min  
 Delta R.T.: -0.002 min  
 Response: 332658160  
 Conc: 44.71 ng/ml



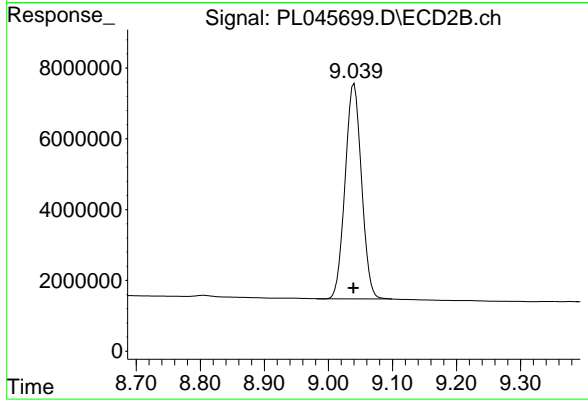
#22 Mirex  
 R.T.: 8.164 min  
 Delta R.T.: 0.000 min  
 Response: 92220904  
 Conc: 46.30 ng/ml



#28 Decachlorobiphenyl

R.T.: 8.045 min  
Delta R.T.: -0.003 min  
Response: 377148801  
Conc: 45.07 ng/ml

Instrument :  
ECD\_L  
ClientSampleId :  
PSTDCCC050



#28 Decachlorobiphenyl

R.T.: 9.040 min  
Delta R.T.: 0.001 min  
Response: 108134331  
Conc: 47.33 ng/ml