

Data Path : Z:\pestpcbsrv\HPCHEM1\ECD\_L\Data\PL031120\  
 Data File : PL057229.D  
 Signal(s) : Signal #1: ECD1A.ch Signal #2: ECD2B.ch  
 Acq On : 11 Mar 2020 20:41  
 Operator : AJ\MA  
 Sample : L1852-24  
 Misc :  
 ALS Vial : 39 Sample Multiplier: 1

Instrument :  
 ECD\_L  
 ClientSampleId :  
 TP-4-S

Integration File signal 1: autoint1.e  
 Integration File signal 2: autoint2.e  
 Quant Time: Mar 12 06:44:07 2020  
 Quant Method : Z:\pestpcbsrv\HPCHEM1\ECD\_L\methods\PL030320.M  
 Quant Title : GC Extractables  
 QLast Update : Wed Mar 11 17:44:01 2020  
 Response via : Initial Calibration  
 Integrator: ChemStation

Volume Inj. : 1 µl  
 Signal #1 Phase : ZB-MR2 Signal #2 Phase: ZB-MR1  
 Signal #1 Info : 30M x 0.32mm x0.2 Signal #2 Info : 30M x 0.32mm x0.5µm

Compound	RT#1	RT#2	Resp#1	Resp#2	ng/ml	ng/ml
-----						
System Monitoring Compounds						
1) SA Tetrachlo...	3.460	3.958	192.6E6	47424122	22.601	22.228
28) SA Decachlor...	8.208	8.983	192.1E6	43775325	19.872	20.603

Target Compounds

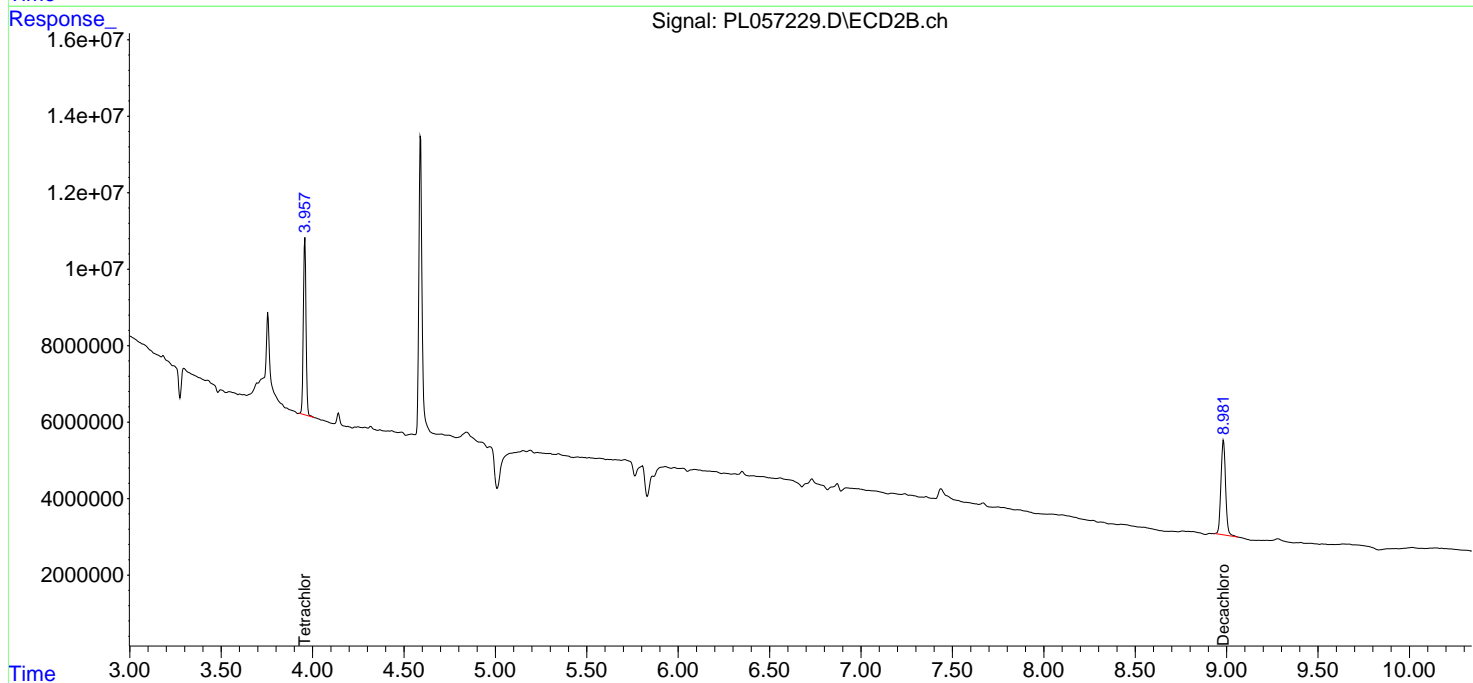
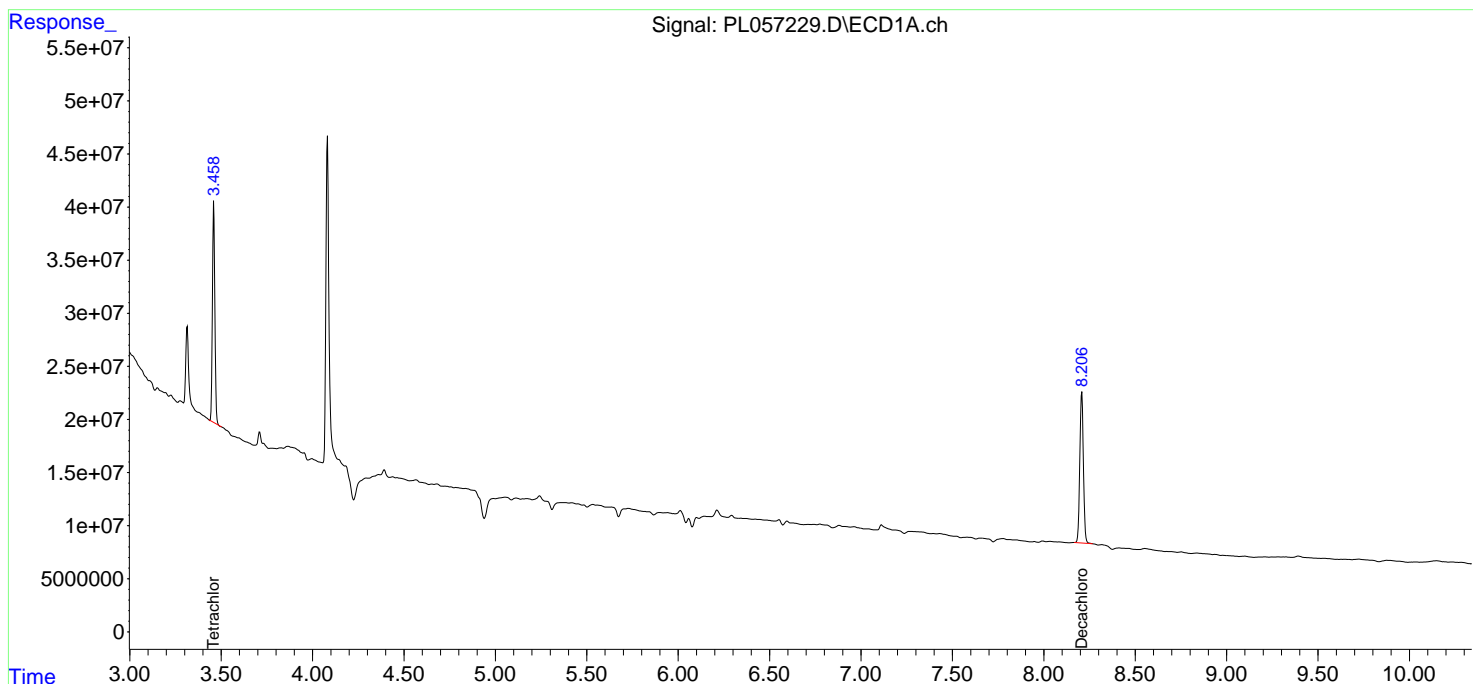
(f)=RT Delta > 1/2 Window (#)=Amounts differ by > 25% (m)=manual int.

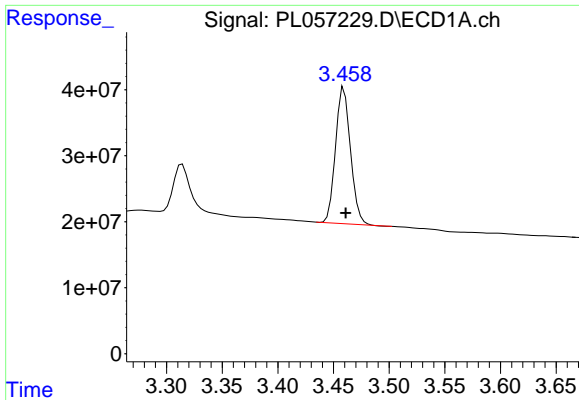
Data Path : Z:\pestpcbsrv\HPCHEM1\ECD\_L\Data\PL031120\  
 Data File : PL057229.D  
 Signal(s) : Signal #1: ECD1A.ch Signal #2: ECD2B.ch  
 Acq On : 11 Mar 2020 20:41  
 Operator : AJ\MA  
 Sample : L1852-24  
 Misc :  
 ALS Vial : 39 Sample Multiplier: 1

Instrument :  
 ECD\_L  
 ClientSampleID :  
 TP-4-S

Integration File signal 1: autoint1.e  
 Integration File signal 2: autoint2.e  
 Quant Time: Mar 12 06:44:07 2020  
 Quant Method : Z:\pestpcbsrv\HPCHEM1\ECD\_L\methods\PL030320.M  
 Quant Title : GC Extractables  
 QLast Update : Wed Mar 11 17:44:01 2020  
 Response via : Initial Calibration  
 Integrator: ChemStation

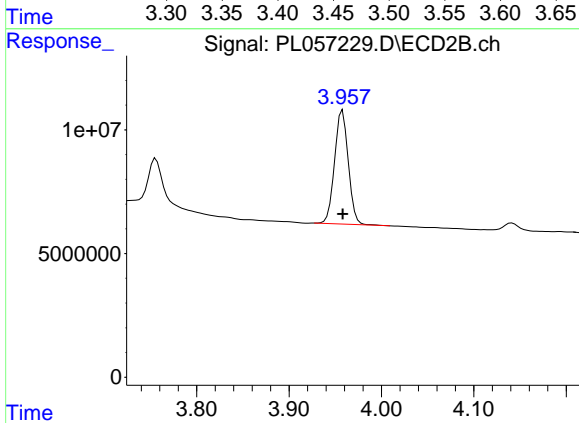
Volume Inj. : 1 µl  
 Signal #1 Phase : ZB-MR2 Signal #2 Phase: ZB-MR1  
 Signal #1 Info : 30M x 0.32mm x0.2 Signal #2 Info : 30M x 0.32mm x0.5µm



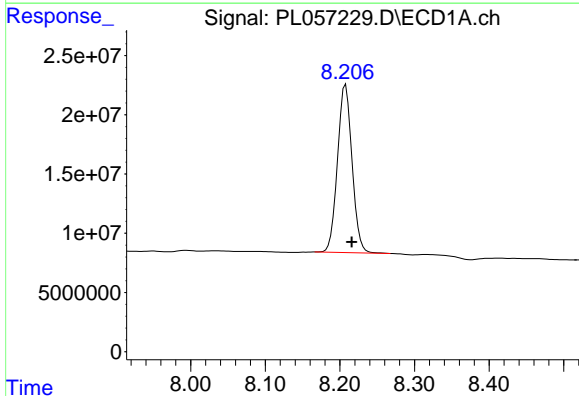


#1 Tetrachloro-m-xylene  
R.T.: 3.460 min  
Delta R.T.: -0.001 min  
Response: 192614435  
Conc: 22.60 ng/ml

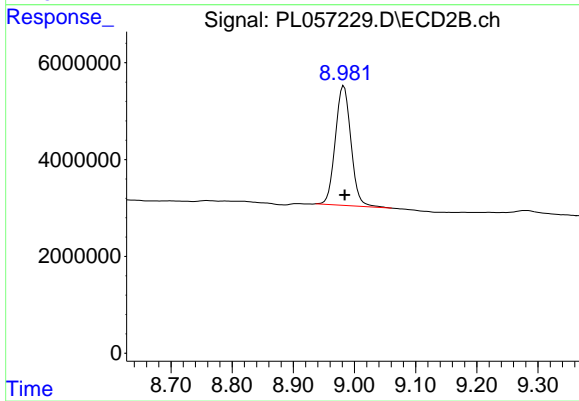
Instrument :  
ECD\_L  
ClientSampleId :  
TP-4-S



#1 Tetrachloro-m-xylene  
R.T.: 3.958 min  
Delta R.T.: 0.000 min  
Response: 47424122  
Conc: 22.23 ng/ml



#28 Decachlorobiphenyl  
R.T.: 8.208 min  
Delta R.T.: -0.008 min  
Response: 192069491  
Conc: 19.87 ng/ml



#28 Decachlorobiphenyl  
R.T.: 8.983 min  
Delta R.T.: -0.002 min  
Response: 43775325  
Conc: 20.60 ng/ml