

Data Path : Z:\pestpcbsrv\HPCHEM1\ECD_L\Data\PL031124\
 Data File : PL088489.D
 Signal(s) : Signal #1: ECD1A.ch Signal #2: ECD2B.ch
 Acq On : 11 Mar 2024 12:41
 Operator : ARVAJ
 Sample : P1601-04
 Misc : TOX MDL 100PPB SOIL
 ALS Vial : 10 Sample Multiplier: 1

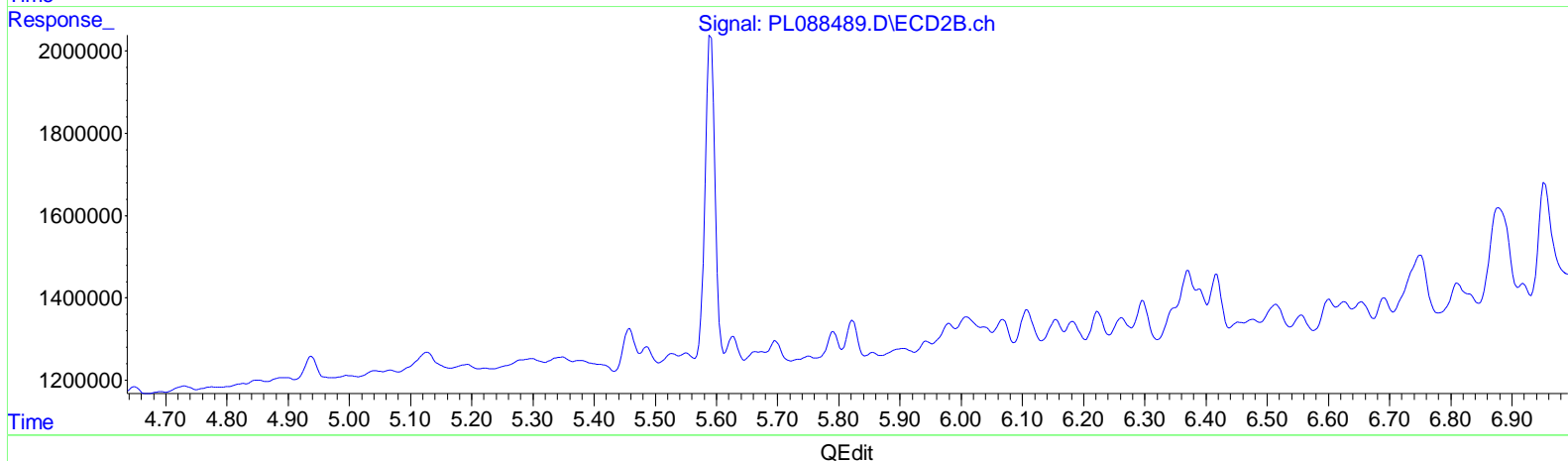
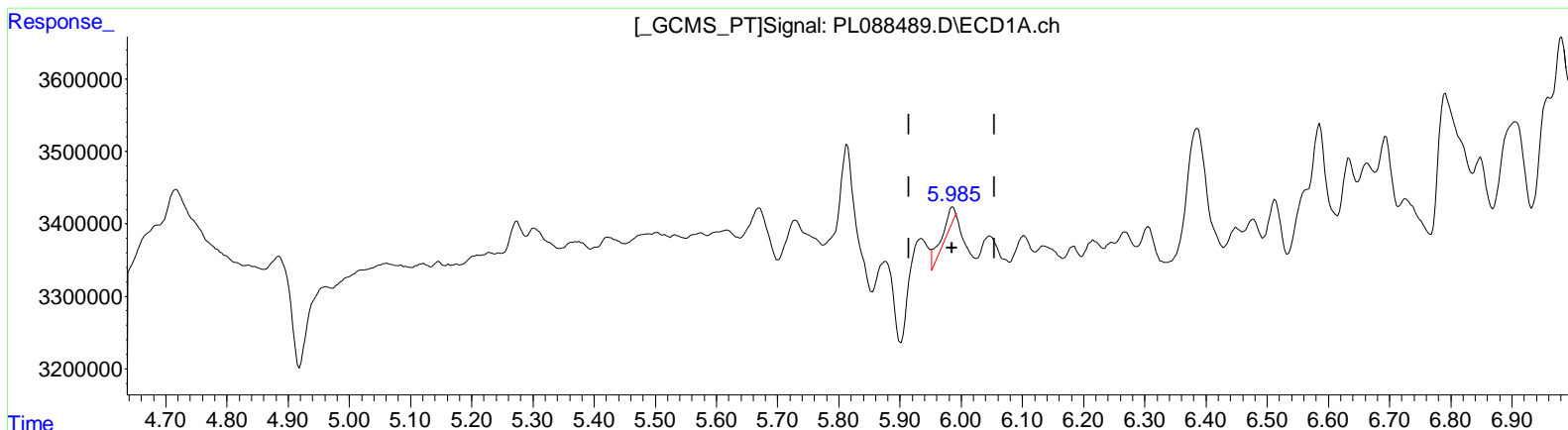
Instrument :
 ECD_L
ClientSampleId :
 MDL-SOIL-QT1-2024-02

Manual IntegrationsAPPROVED

Reviewed By :Abdul Mirza 03/12/2024
 Supervised By :Ankita Jodhani 03/12/2024

Integration File signal 1: autoint1.e
 Integration File signal 2: autoint2.e
 Quant Time: Mar 12 00:33:05 2024
 Quant Method : Z:\pestpcbsrv\HPCHEM1\ECD_L\methods\PL030824CLP.M
 Quant Title : GC Extractables
 QLast Update : Fri Mar 08 16:13:19 2024
 Response via : Initial Calibration
 Integrator: ChemStation

Volume Inj. : 1 µl
 Signal #1 Phase : ZB-MR2 Signal #2 Phase: ZB-MR1
 Signal #1 Info : 30M x 0.32mm x0.2 Signal #2 Info : 30M x 0.32mm x 0.50µm



(22) Toxaphene-1
 5.986min 38.156 ng/ml
 response 420068

(22) Toxaphene-1 #2
 0.000min 0.000 ng/ml
 response 0

Data Path : Z:\pestpcbsrv\HPCHEM1\ECD_L\Data\PL031124\
 Data File : PL088489.D
 Signal(s) : Signal #1: ECD1A.ch Signal #2: ECD2B.ch
 Acq On : 11 Mar 2024 12:41
 Operator : ARVAJ
 Sample : P1601-04
 Misc : TOX MDL 100PPB SOIL
 ALS Vial : 10 Sample Multiplier: 1

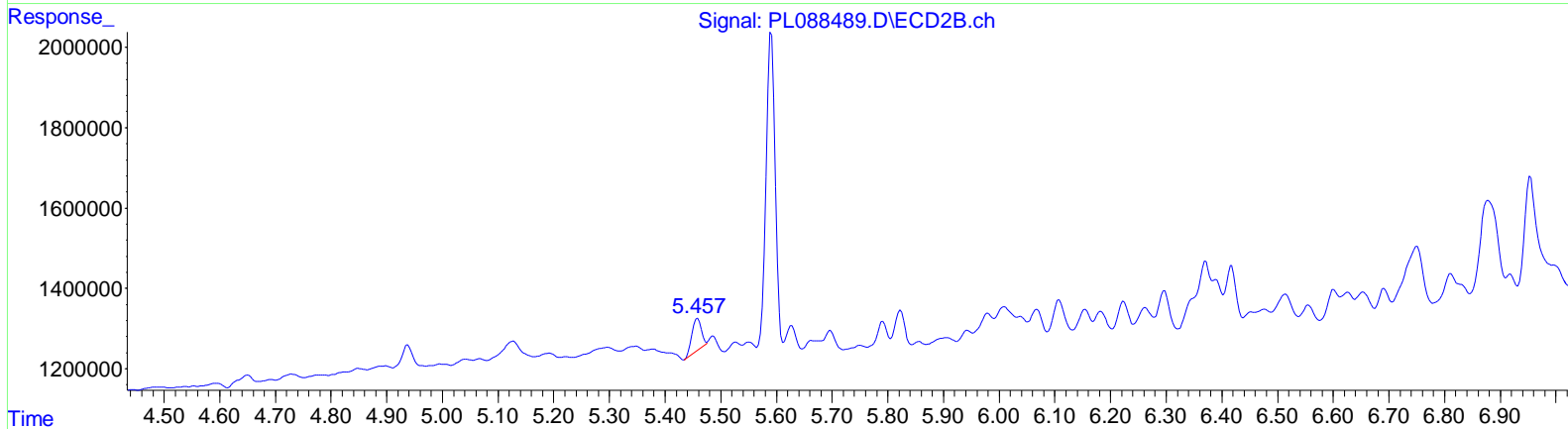
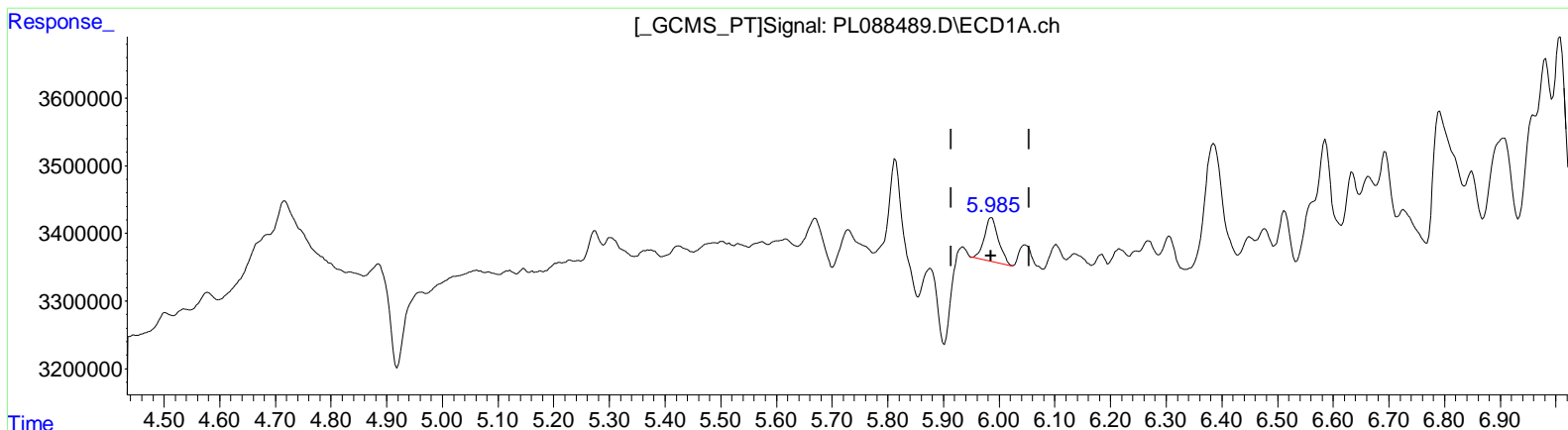
Instrument :
 ECD_L
ClientSampleId :
 MDL-SOIL-QT1-2024-02

Manual Integrations APPROVED

Reviewed By : Abdul Mirza 03/12/2024
 Supervised By : Ankita Jodhani 03/12/2024

Integration File signal 1: autoint1.e
 Integration File signal 2: autoint2.e
 Quant Time: Mar 12 00:33:05 2024
 Quant Method : Z:\pestpcbsrv\HPCHEM1\ECD_L\methods\PL030824CLP.M
 Quant Title : GC Extractables
 QLast Update : Fri Mar 08 16:13:19 2024
 Response via : Initial Calibration
 Integrator: ChemStation

Volume Inj. : 1 µl
 Signal #1 Phase : ZB-MR2 Signal #2 Phase: ZB-MR1
 Signal #1 Info : 30M x 0.32mm x 0.2 Signal #2 Info : 30M x 0.32mm x 0.50µm



QEdit

(22) Toxaphene-1
 5.985min 102.457 ng/ml m
 response 1127957

(22) Toxaphene-1 #2
 5.457min 95.775 ng/ml m
 response 926941

Data Path : Z:\pestpcbsrv\HPCHEM1\ECD_L\Data\PL031124\
 Data File : PL088489.D
 Signal(s) : Signal #1: ECD1A.ch Signal #2: ECD2B.ch
 Acq On : 11 Mar 2024 12:41
 Operator : ARVAJ
 Sample : P1601-04
 Misc : TOX MDL 100PPB SOIL
 ALS Vial : 10 Sample Multiplier: 1

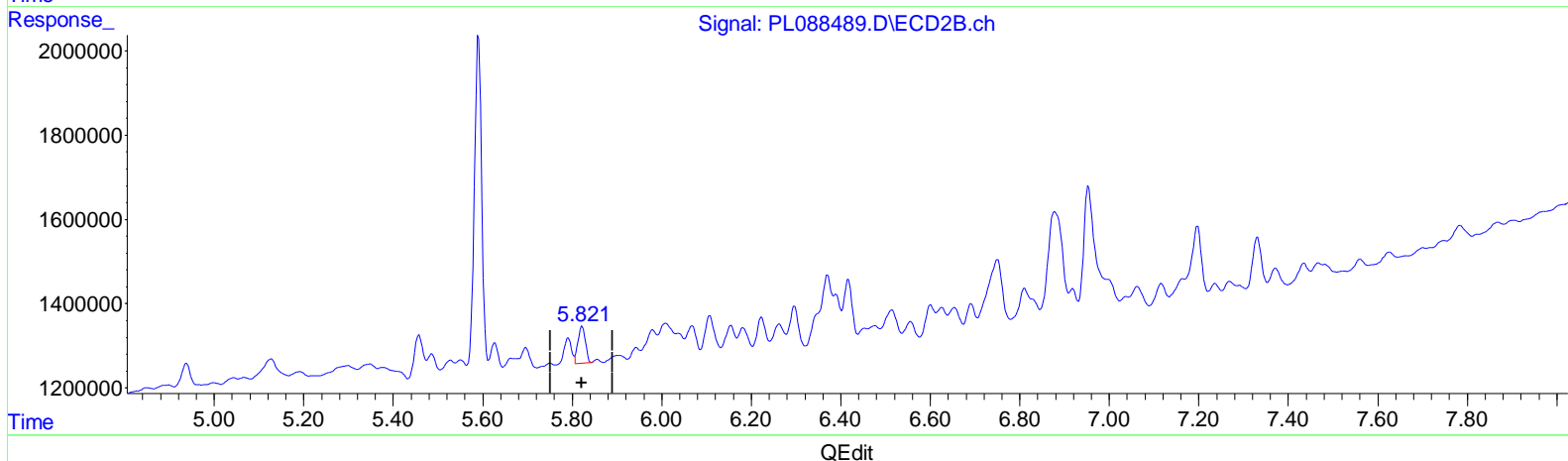
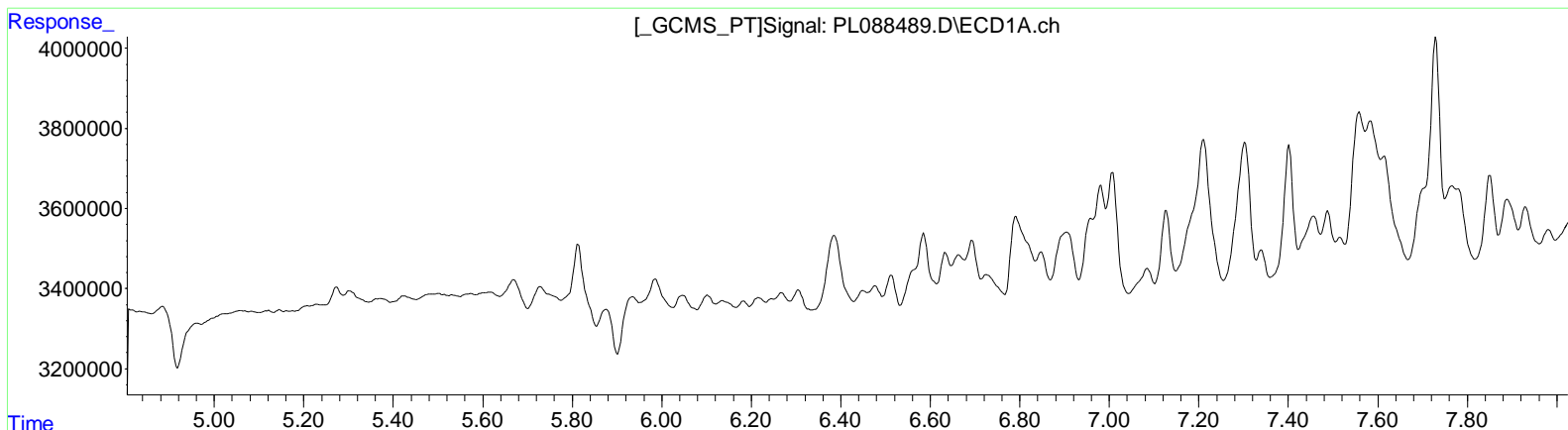
Instrument :
 ECD_L
ClientSampleId :
 MDL-SOIL-QT1-2024-02

Manual Integrations APPROVED

Reviewed By : Abdul Mirza 03/12/2024
 Supervised By : Ankita Jodhani 03/12/2024

Integration File signal 1: autoint1.e
 Integration File signal 2: autoint2.e
 Quant Time: Mar 12 00:33:05 2024
 Quant Method : Z:\pestpcbsrv\HPCHEM1\ECD_L\methods\PL030824CLP.M
 Quant Title : GC Extractables
 QLast Update : Fri Mar 08 16:13:19 2024
 Response via : Initial Calibration
 Integrator: ChemStation

Volume Inj. : 1 µl
 Signal #1 Phase : ZB-MR2 Signal #2 Phase: ZB-MR1
 Signal #1 Info : 30M x 0.32mm x 0.2 Signal #2 Info : 30M x 0.32mm x 0.50µm



(23) Toxaphene-2
 0.000min 0.000 ng/ml
 response 0

(23) Toxaphene-2 #2
 5.823min 93.794 ng/ml
 response 1032766

(+) = Expected Retention Time

Data Path : Z:\pestpcbsrv\HPCHEM1\ECD_L\Data\PL031124\
 Data File : PL088489.D
 Signal(s) : Signal #1: ECD1A.ch Signal #2: ECD2B.ch
 Acq On : 11 Mar 2024 12:41
 Operator : ARVAJ
 Sample : P1601-04
 Misc : TOX MDL 100PPB SOIL
 ALS Vial : 10 Sample Multiplier: 1

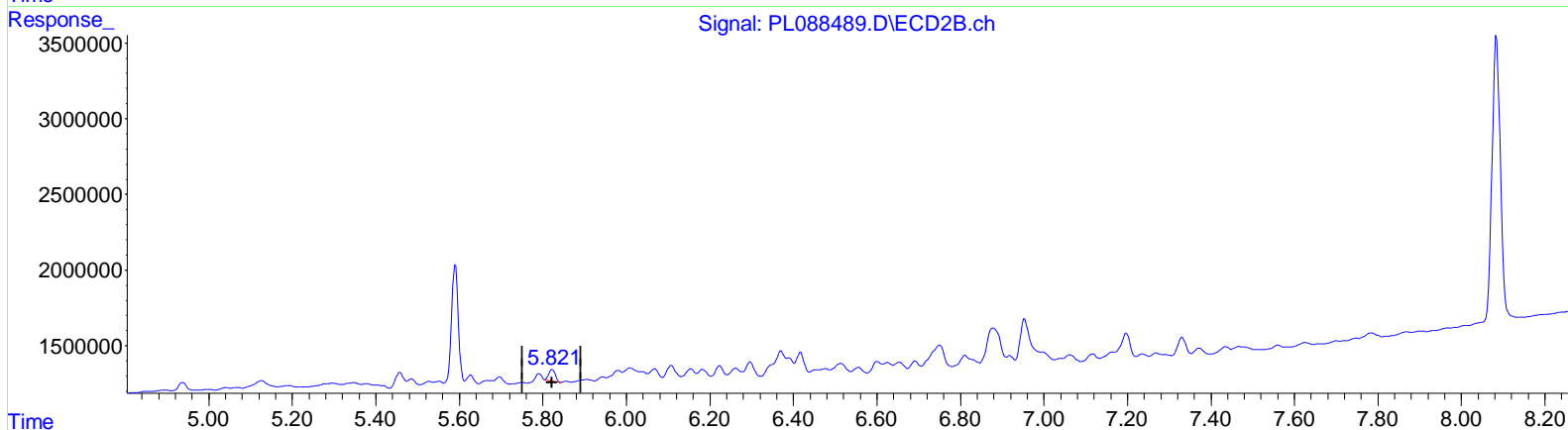
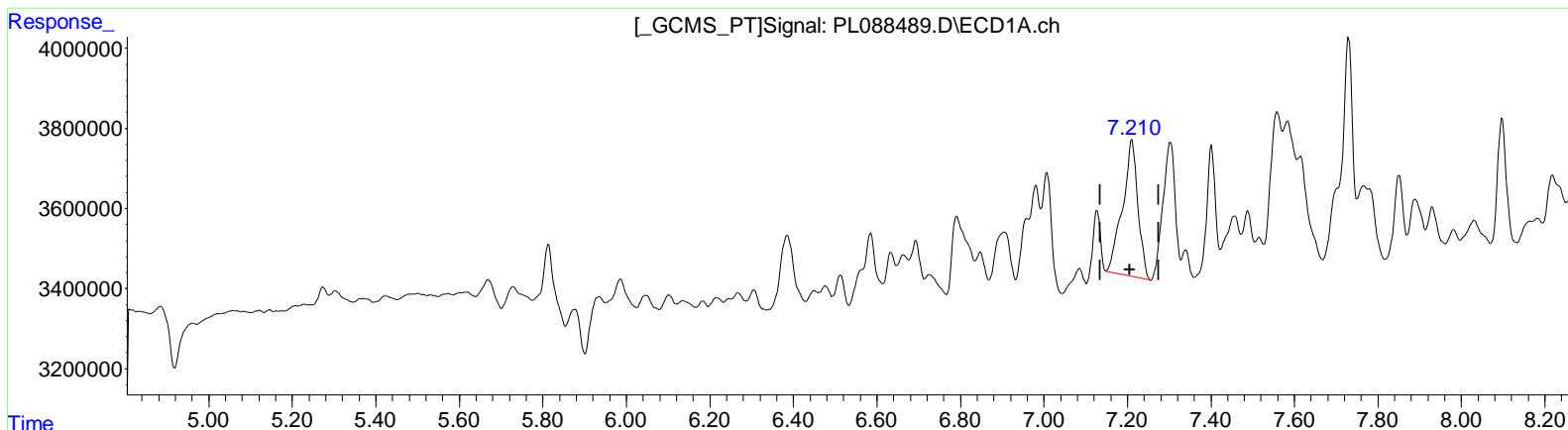
Instrument :
 ECD_L
ClientSampleId :
 MDL-SOIL-QT1-2024-02

Manual Integrations APPROVED

Reviewed By : Abdul Mirza 03/12/2024
 Supervised By : Ankita Jodhani 03/12/2024

Integration File signal 1: autoint1.e
 Integration File signal 2: autoint2.e
 Quant Time: Mar 12 00:33:05 2024
 Quant Method : Z:\pestpcbsrv\HPCHEM1\ECD_L\methods\PL030824CLP.M
 Quant Title : GC Extractables
 QLast Update : Fri Mar 08 16:13:19 2024
 Response via : Initial Calibration
 Integrator: ChemStation

Volume Inj. : 1 µl
 Signal #1 Phase : ZB-MR2 Signal #2 Phase: ZB-MR1
 Signal #1 Info : 30M x 0.32mm x 0.2 Signal #2 Info : 30M x 0.32mm x 0.50µm



QEdit

(23) Toxaphene-2
 7.210min 98.306 ng/ml m
 response 8691777

(23) Toxaphene-2 #2
 5.821min 74.977 ng/ml m
 response 825579

Data Path : Z:\pestpcbsrv\HPCHEM1\ECD_L\Data\PL031124\
 Data File : PL088489.D
 Signal(s) : Signal #1: ECD1A.ch Signal #2: ECD2B.ch
 Acq On : 11 Mar 2024 12:41
 Operator : ARVAJ
 Sample : P1601-04
 Misc : TOX MDL 100PPB SOIL
 ALS Vial : 10 Sample Multiplier: 1

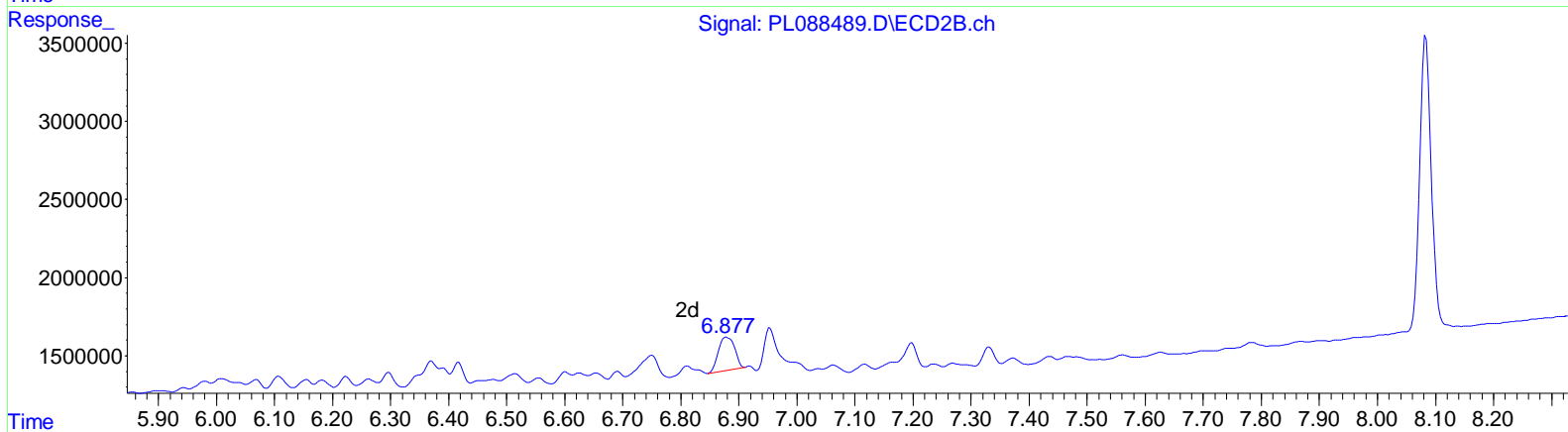
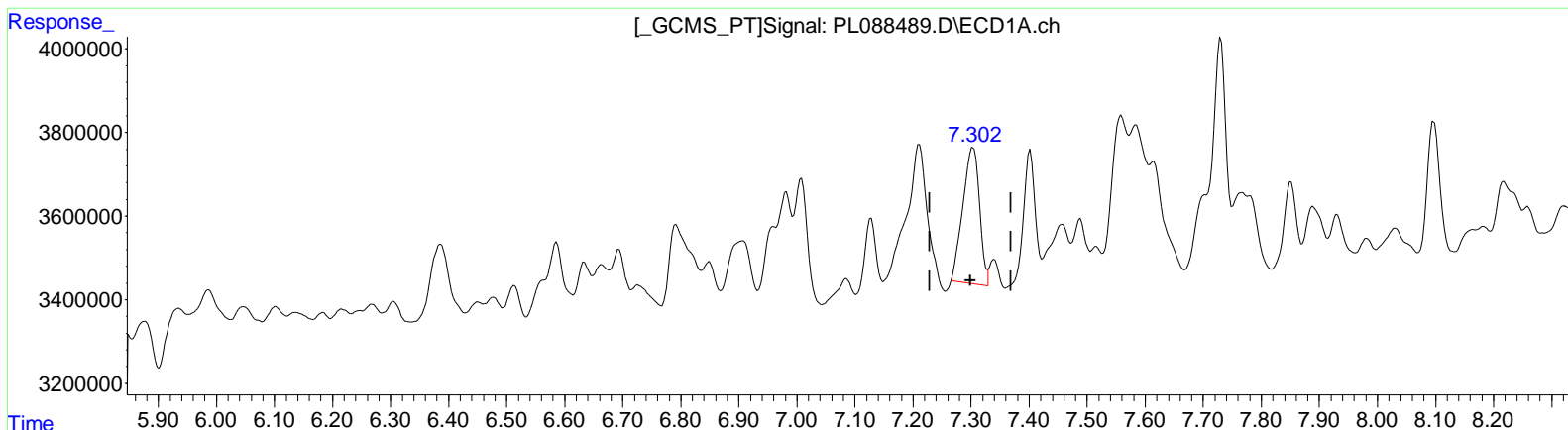
Instrument :
 ECD_L
ClientSampleId :
 MDL-SOIL-QT1-2024-02

Manual Integrations APPROVED

Reviewed By : Abdul Mirza 03/12/2024
 Supervised By : Ankita Jodhani 03/12/2024

Integration File signal 1: autoint1.e
 Integration File signal 2: autoint2.e
 Quant Time: Mar 12 00:33:05 2024
 Quant Method : Z:\pestpcbsrv\HPCHEM1\ECD_L\methods\PL030824CLP.M
 Quant Title : GC Extractables
 QLast Update : Fri Mar 08 16:13:19 2024
 Response via : Initial Calibration
 Integrator: ChemStation

Volume Inj. : 1 µl
 Signal #1 Phase : ZB-MR2 Signal #2 Phase: ZB-MR1
 Signal #1 Info : 30M x 0.32mm x 0.2 Signal #2 Info : 30M x 0.32mm x 0.50µm



(24) Toxaphene-3
 7.304min 99.004 ng/ml
 response 6370252

(24) Toxaphene-3 #2
 6.879min 82.531 ng/ml
 response 4175375

(+) = Expected Retention Time

Data Path : Z:\pestpcbsrv\HPCHEM1\ECD_L\Data\PL031124\
 Data File : PL088489.D
 Signal(s) : Signal #1: ECD1A.ch Signal #2: ECD2B.ch
 Acq On : 11 Mar 2024 12:41
 Operator : ARVAJ
 Sample : P1601-04
 Misc : TOX MDL 100PPB SOIL
 ALS Vial : 10 Sample Multiplier: 1

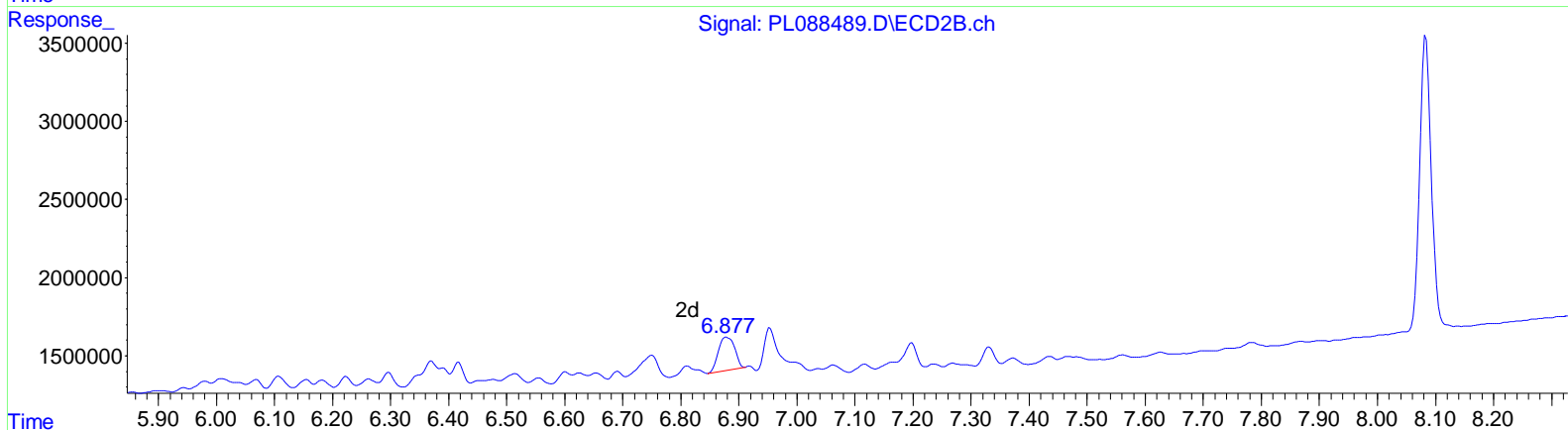
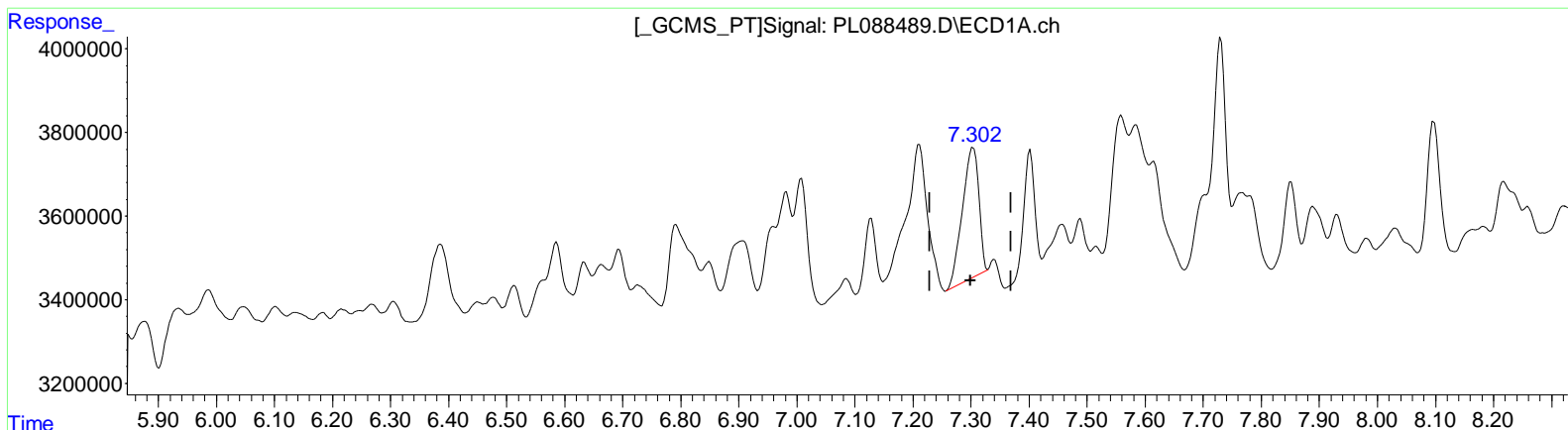
Instrument :
 ECD_L
ClientSampleId :
 MDL-SOIL-QT1-2024-02

Manual Integrations APPROVED

Reviewed By : Abdul Mirza 03/12/2024
 Supervised By : Ankita Jodhani 03/12/2024

Integration File signal 1: autoint1.e
 Integration File signal 2: autoint2.e
 Quant Time: Mar 12 00:33:05 2024
 Quant Method : Z:\pestpcbsrv\HPCHEM1\ECD_L\methods\PL030824CLP.M
 Quant Title : GC Extractables
 QLast Update : Fri Mar 08 16:13:19 2024
 Response via : Initial Calibration
 Integrator: ChemStation

Volume Inj. : 1 µl
 Signal #1 Phase : ZB-MR2 Signal #2 Phase: ZB-MR1
 Signal #1 Info : 30M x 0.32mm x 0.2 Signal #2 Info : 30M x 0.32mm x 0.50µm



(24) Toxaphene-3
 7.302min 94.308 ng/ml m
 response 6068114

(24) Toxaphene-3 #2
 6.879min 82.531 ng/ml
 response 4175375

Data Path : Z:\pestpcbsrv\HPCHEM1\ECD_L\Data\PL031124\
 Data File : PL088489.D
 Signal(s) : Signal #1: ECD1A.ch Signal #2: ECD2B.ch
 Acq On : 11 Mar 2024 12:41
 Operator : ARVAJ
 Sample : P1601-04
 Misc : TOX MDL 100PPB SOIL
 ALS Vial : 10 Sample Multiplier: 1

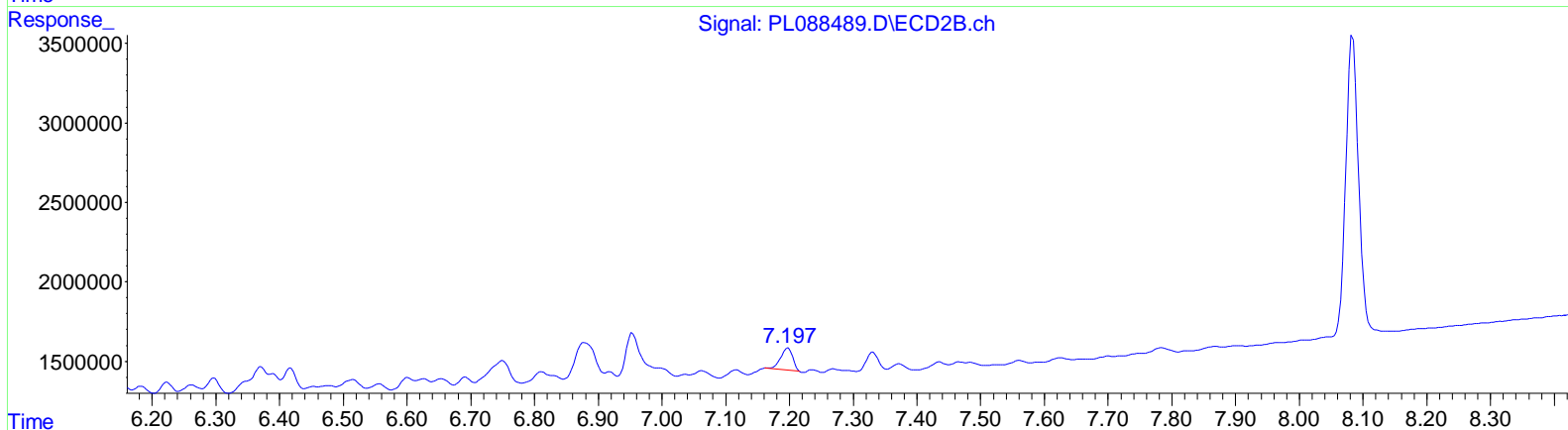
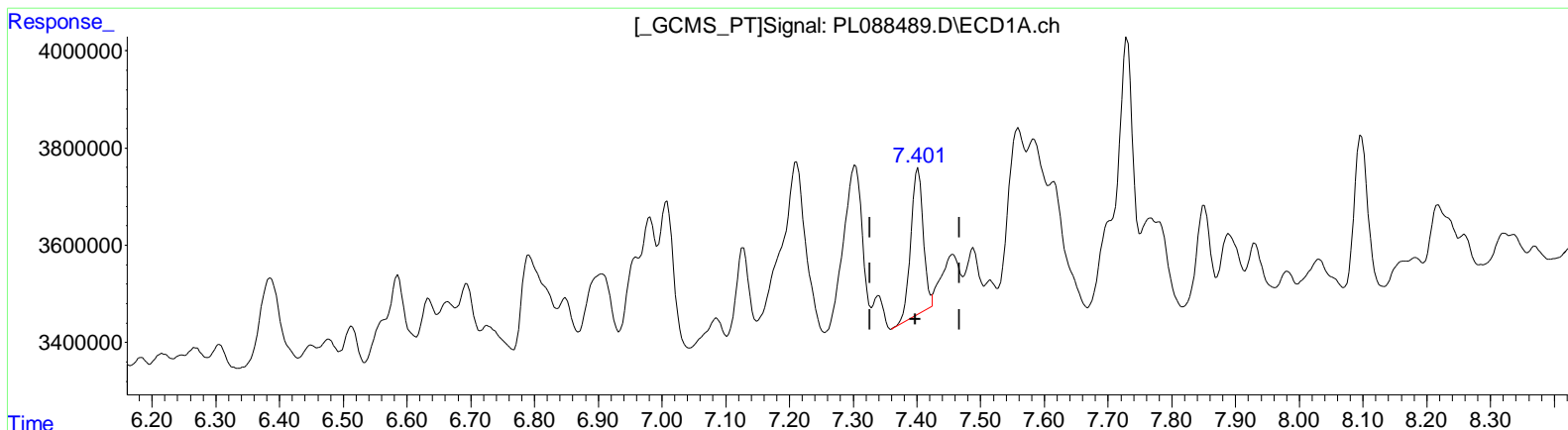
Instrument :
 ECD_L
ClientSampleId :
 MDL-SOIL-QT1-2024-02

Manual Integrations APPROVED

Reviewed By : Abdul Mirza 03/12/2024
 Supervised By : Ankita Jodhani 03/12/2024

Integration File signal 1: autoint1.e
 Integration File signal 2: autoint2.e
 Quant Time: Mar 12 00:33:05 2024
 Quant Method : Z:\pestpcbsrv\HPCHEM1\ECD_L\methods\PL030824CLP.M
 Quant Title : GC Extractables
 QLast Update : Fri Mar 08 16:13:19 2024
 Response via : Initial Calibration
 Integrator: ChemStation

Volume Inj. : 1 µl
 Signal #1 Phase : ZB-MR2 Signal #2 Phase: ZB-MR1
 Signal #1 Info : 30M x 0.32mm x 0.2 Signal #2 Info : 30M x 0.32mm x 0.50µm



(25) Toxaphene-4
 7.402min 108.950 ng/ml
 response 3985265

(25) Toxaphene-4 #2
 7.198min 86.077 ng/ml
 response 1805573

(+) = Expected Retention Time

Data Path : Z:\pestpcbsrv\HPCHEM1\ECD_L\Data\PL031124\
 Data File : PL088489.D
 Signal(s) : Signal #1: ECD1A.ch Signal #2: ECD2B.ch
 Acq On : 11 Mar 2024 12:41
 Operator : ARVAJ
 Sample : P1601-04
 Misc : TOX MDL 100PPB SOIL
 ALS Vial : 10 Sample Multiplier: 1

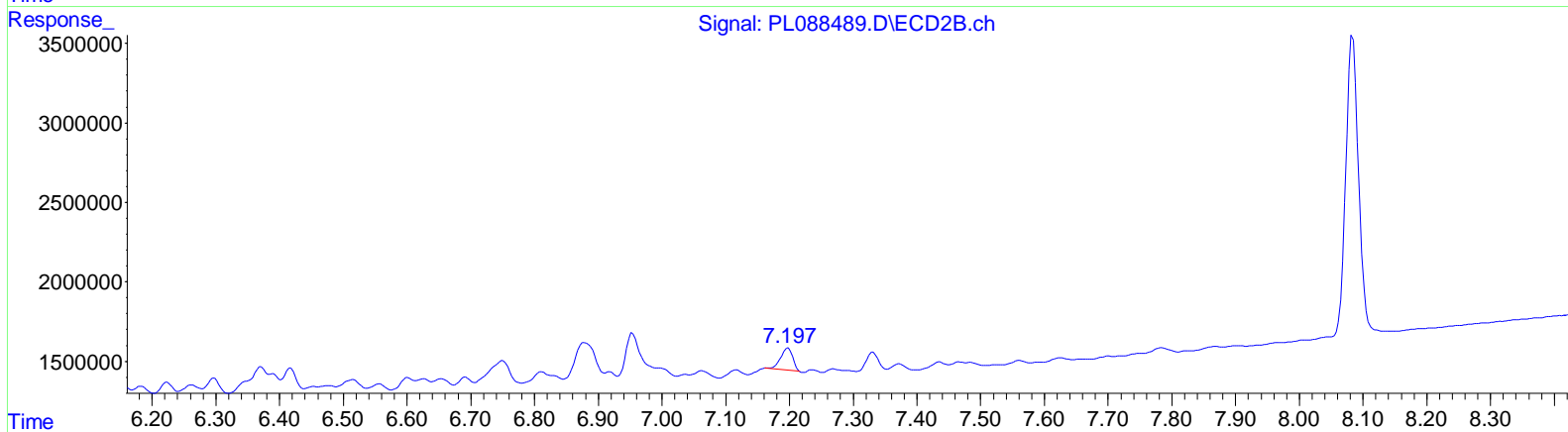
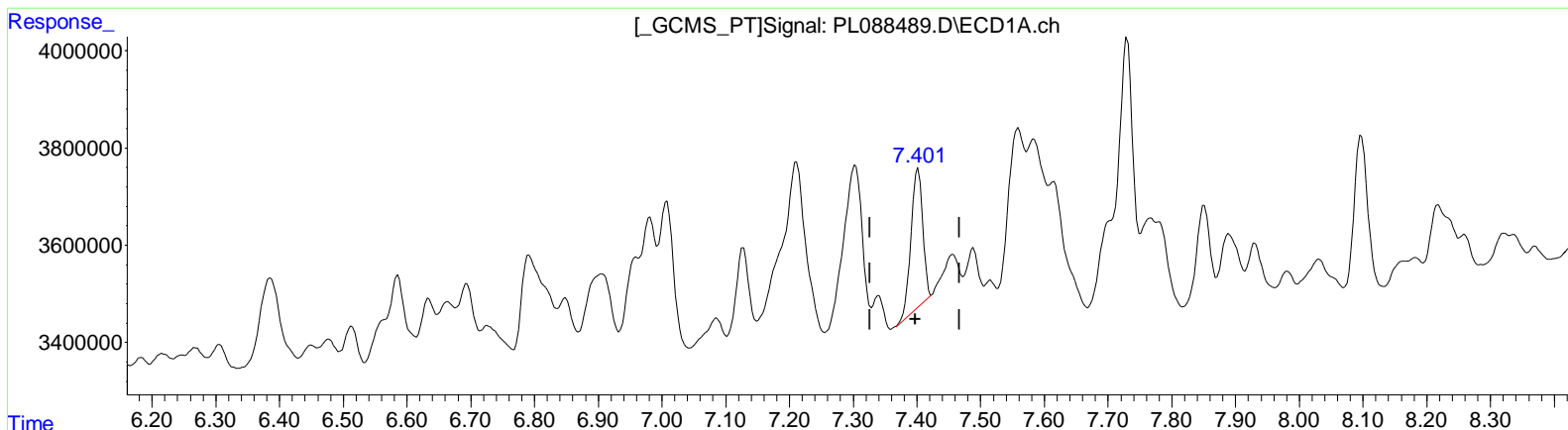
Instrument :
 ECD_L
ClientSampleId :
 MDL-SOIL-QT1-2024-02

Manual Integrations APPROVED

Reviewed By : Abdul Mirza 03/12/2024
 Supervised By : Ankita Jodhani 03/12/2024

Integration File signal 1: autoint1.e
 Integration File signal 2: autoint2.e
 Quant Time: Mar 12 00:33:05 2024
 Quant Method : Z:\pestpcbsrv\HPCHEM1\ECD_L\methods\PL030824CLP.M
 Quant Title : GC Extractables
 QLast Update : Fri Mar 08 16:13:19 2024
 Response via : Initial Calibration
 Integrator: ChemStation

Volume Inj. : 1 µl
 Signal #1 Phase : ZB-MR2 Signal #2 Phase: ZB-MR1
 Signal #1 Info : 30M x 0.32mm x 0.2 Signal #2 Info : 30M x 0.32mm x 0.50µm



QEdit

(25) Toxaphene-4
 7.401min 99.538 ng/ml m
 response 3640991

(25) Toxaphene-4 #2
 7.198min 86.077 ng/ml
 response 1805573

Data Path : Z:\pestpcbsrv\HPCHEM1\ECD_L\Data\PL031124\
 Data File : PL088489.D
 Signal(s) : Signal #1: ECD1A.ch Signal #2: ECD2B.ch
 Acq On : 11 Mar 2024 12: 41
 Operator : ARVAJ
 Sample : P1601-04
 Misc : TOX MDL 100PPB SOIL
 ALS Vial : 10 Sample Multiplier: 1

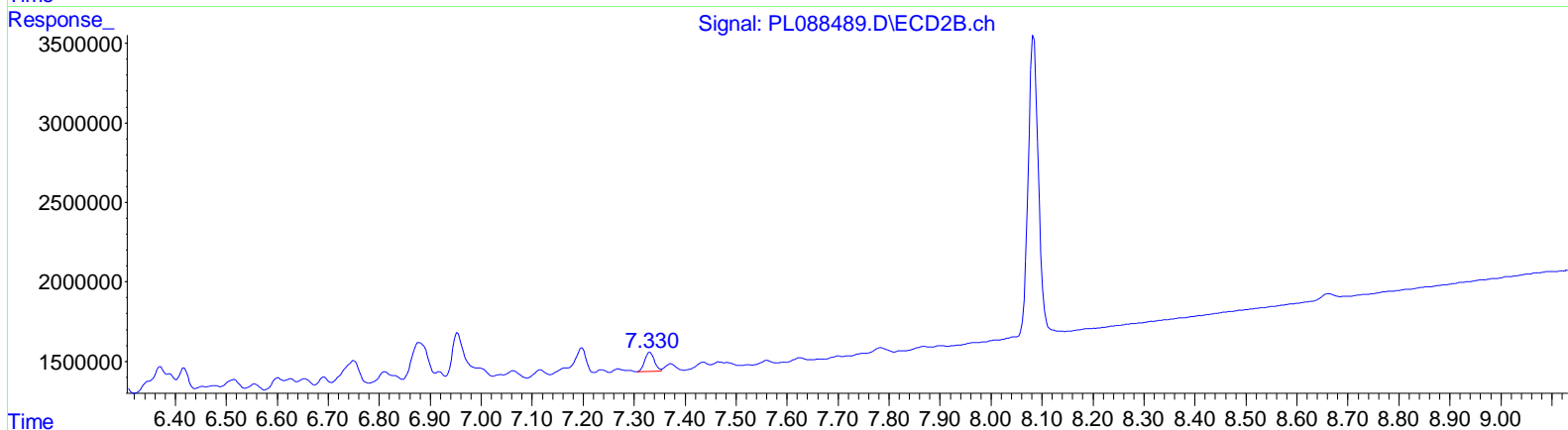
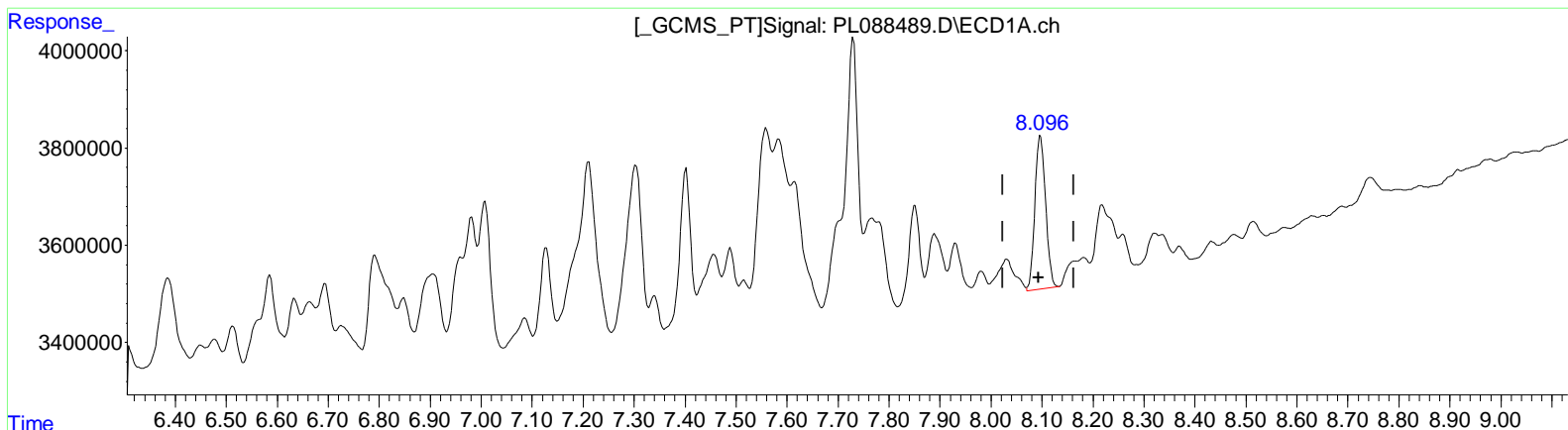
Instrument :
 ECD_L
ClientSampleId :
 MDL-SOIL-QT1-2024-02

Manual IntegrationsAPPROVED

Reviewed By :Abdul Mirza 03/12/2024
 Supervised By :Ankita Jodhani 03/12/2024

Integration File signal 1: autoint1.e
 Integration File signal 2: autoint2.e
 Quant Time: Mar 12 00:33:05 2024
 Quant Method : Z:\pestpcbsrv\HPCHEM1\ECD_L\methods\PL030824CLP.M
 Quant Title : GC Extractables
 QLast Update : Fri Mar 08 16:13:19 2024
 Response via : Initial Calibration
 Integrator: ChemStation

Volume Inj. : 1 µl
 Signal #1 Phase : ZB-MR2 Signal #2 Phase: ZB-MR1
 Signal #1 Info : 30M x 0.32mm x0.2 Signal #2 Info : 30M x 0.32mm x 0.50µm



QEdit

(26) Toxaphene-5
 8.097min 97.757 ng/ml
 response 4568446

(26) Toxaphene-5 #2
 7.331min 83.172 ng/ml
 response 1563280

(+) = Expected Retention Time

Data Path : Z:\pestpcbsrv\HPCHEM1\ECD_L\Data\PL031124\
 Data File : PL088489.D
 Signal(s) : Signal #1: ECD1A.ch Signal #2: ECD2B.ch
 Acq On : 11 Mar 2024 12:41
 Operator : ARVAJ
 Sample : P1601-04
 Misc : TOX MDL 100PPB SOIL
 ALS Vial : 10 Sample Multiplier: 1

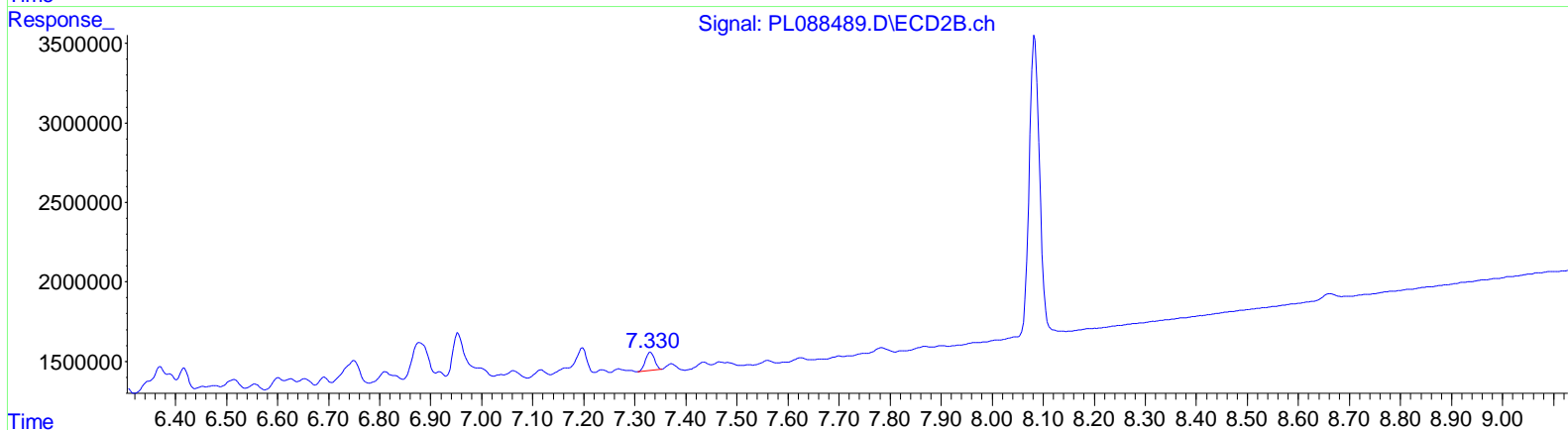
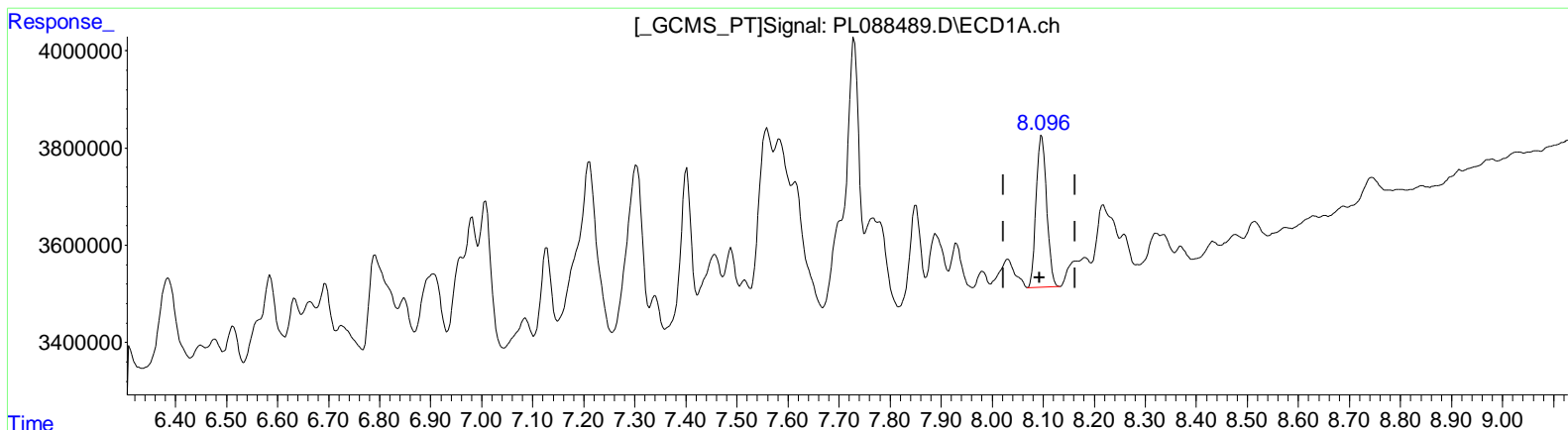
Instrument :
 ECD_L
ClientSampleId :
 MDL-SOIL-QT1-2024-02

Manual Integrations APPROVED

Reviewed By : Abdul Mirza 03/12/2024
 Supervised By : Ankita Jodhani 03/12/2024

Integration File signal 1: autoint1.e
 Integration File signal 2: autoint2.e
 Quant Time: Mar 12 00:33:05 2024
 Quant Method : Z:\pestpcbsrv\HPCHEM1\ECD_L\methods\PL030824CLP.M
 Quant Title : GC Extractables
 QLast Update : Fri Mar 08 16:13:19 2024
 Response via : Initial Calibration
 Integrator: ChemStation

Volume Inj. : 1 µl
 Signal #1 Phase : ZB-MR2 Signal #2 Phase: ZB-MR1
 Signal #1 Info : 30M x 0.32mm x 0.2 Signal #2 Info : 30M x 0.32mm x 0.50µm



QEdit

(26) Toxaphene-5
 8.096min 95.142 ng/ml m
 response 4446257

(26) Toxaphene-5 #2
 7.330min 75.765 ng/ml m
 response 1424070