

Data Path : Z:\pestpcbsrv\HPCHEM1\ECD\_L\Data\PL031125\  
 Data File : PL094580.D  
 Signal(s) : Signal #1: ECD1A.ch Signal #2: ECD2B.ch  
 Acq On : 11 Mar 2025 13:04  
 Operator : AR\AJ  
 Sample : PTOXICC750  
 Misc :  
 ALS Vial : 16 Sample Multiplier: 1

Instrument :  
 ECD\_L  
 ClientSampleId :  
 PTOXICC750

Integration File signal 1: autoint1.e  
 Integration File signal 2: autoint2.e  
 Quant Time: Mar 11 17:50:43 2025  
 Quant Method : Z:\pestpcbsrv\HPCHEM1\ECD\_L\methods\LTX031125.M  
 Quant Title : GC Extractables  
 QLast Update : Tue Mar 11 17:48:02 2025  
 Response via : Initial Calibration  
 Integrator: ChemStation

Volume Inj. : 2 µl  
 Signal #1 Phase : Rtx-CLPesticide 1 Signal #2 Phase: Rtx-CLPesticide 1  
 Signal #1 Info : 30M x 0.32mm x0.3 Signal #2 Info : 30M x 0.32mm x 0.25µm

Compound	RT#1	RT#2	Resp#1	Resp#2	ng/ml	ng/ml
-----						
System Monitoring Compounds						
1) SA Tetrachlo...	3.538	2.772	198.0E6	261.8E6	72.209	72.430
7) SA Decachlor...	9.055	7.907	147.0E6	300.4E6	72.220	72.367
Target Compounds						
2) Toxaphene-1	6.236	4.998	18497768	19000414	730.615	734.036
3) Toxaphene-2	6.441	5.324	11741346	17982430	732.427	711.952
4) Toxaphene-3	7.058	5.681	57160986	20424341	719.772	728.601
5) Toxaphene-4	7.149	6.597	43102634	72687868	719.934	731.073
6) Toxaphene-5	7.933	7.038	31546640	66690404	723.465	718.986
-----						

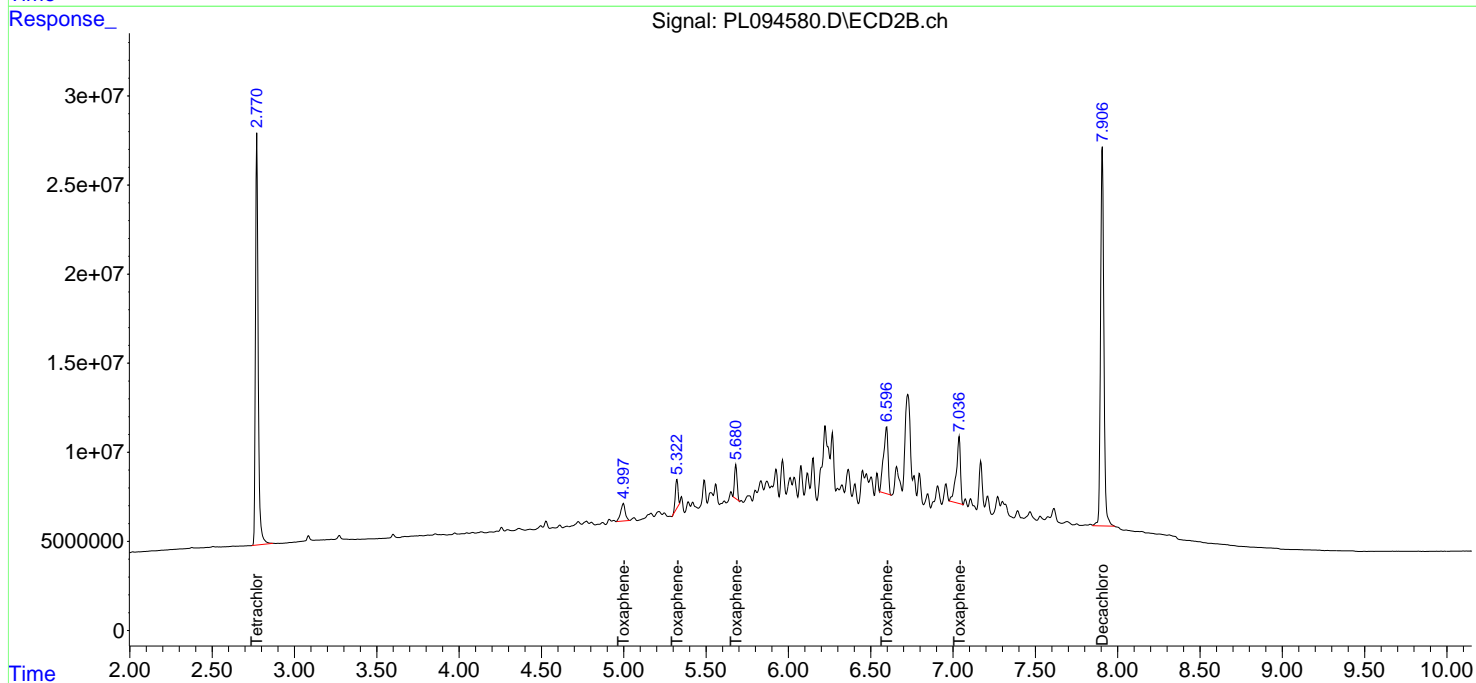
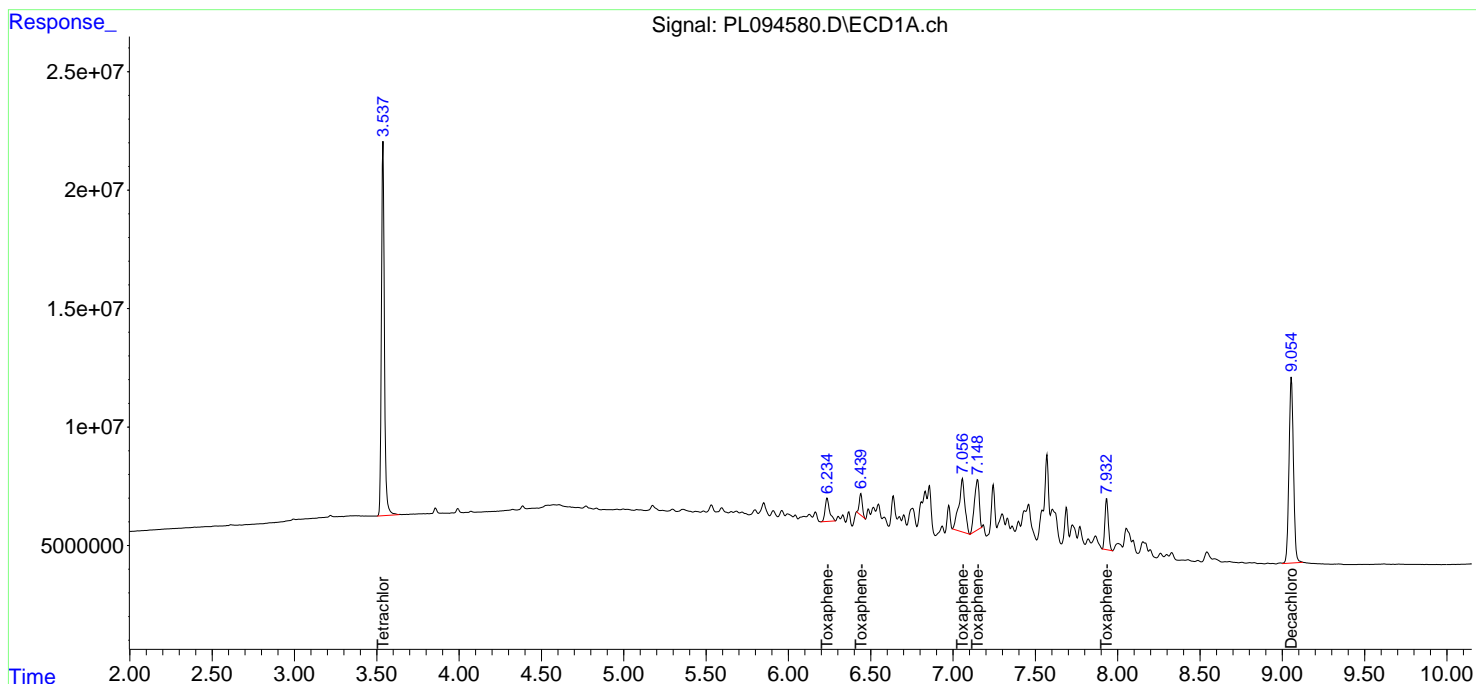
(f)=RT Delta > 1/2 Window (#)=Amounts differ by > 25% (m)=manual int.

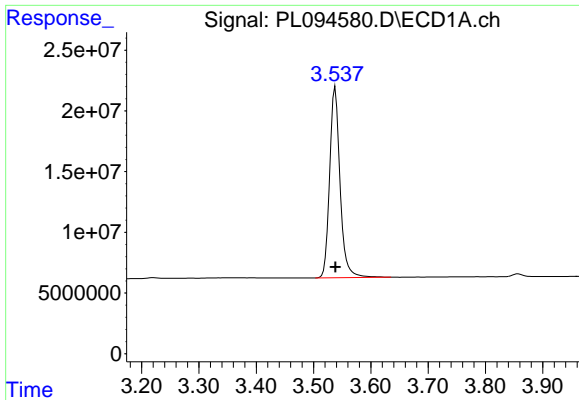
Data Path : Z:\pestpcbsrv\HPCHEM1\ECD\_L\Data\PL031125\  
 Data File : PL094580.D  
 Signal(s) : Signal #1: ECD1A.ch Signal #2: ECD2B.ch  
 Acq On : 11 Mar 2025 13:04  
 Operator : AR\AJ  
 Sample : PTOXICC750  
 Misc :  
 ALS Vial : 16 Sample Multiplier: 1

Instrument :  
 ECD\_L  
 ClientSampleId :  
 PTOXICC750

Integration File signal 1: autoint1.e  
 Integration File signal 2: autoint2.e  
 Quant Time: Mar 11 17:50:43 2025  
 Quant Method : Z:\pestpcbsrv\HPCHEM1\ECD\_L\methods\LTX031125.M  
 Quant Title : GC Extractables  
 QLast Update : Tue Mar 11 17:48:02 2025  
 Response via : Initial Calibration  
 Integrator: ChemStation

Volume Inj. : 2 µl  
 Signal #1 Phase : Rtx-CLPesticide 1 Signal #2 Phase: Rtx-CLPesticide 1  
 Signal #1 Info : 30M x 0.32mm x0.3 Signal #2 Info : 30M x 0.32mm x 0.25µm

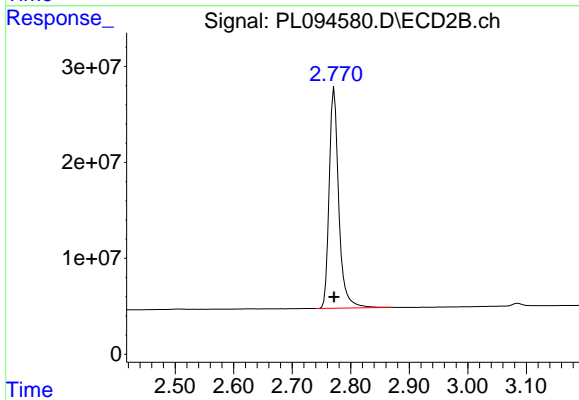




#1 Tetrachloro-m-xylene

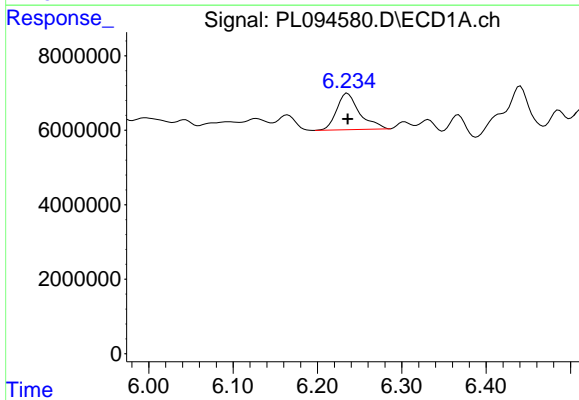
R.T.: 3.538 min  
 Delta R.T.: 0.000 min  
 Response: 198022914  
 Conc: 72.21 ng/ml

Instrument :  
 ECD\_L  
 ClientSampleId :  
 PTOXICC750



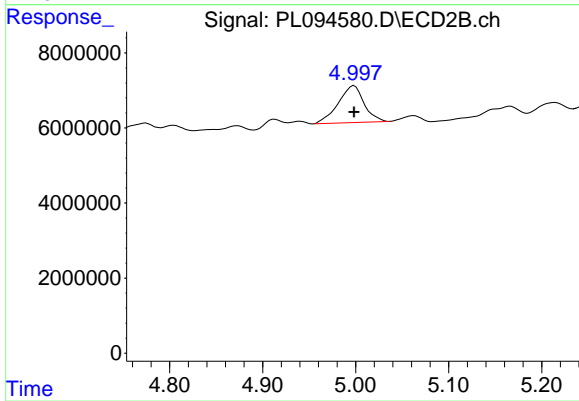
#1 Tetrachloro-m-xylene

R.T.: 2.772 min  
 Delta R.T.: 0.000 min  
 Response: 261776291  
 Conc: 72.43 ng/ml



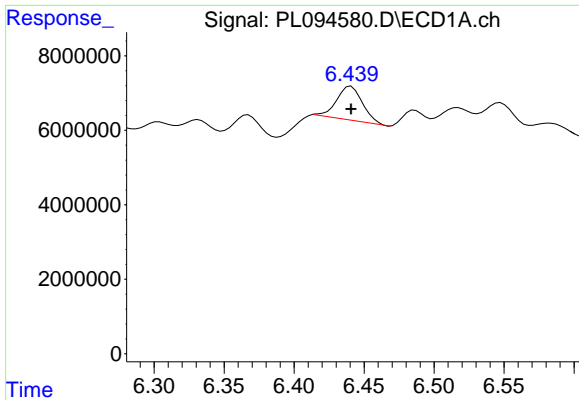
#2 Toxaphene-1

R.T.: 6.236 min  
 Delta R.T.: 0.000 min  
 Response: 18497768  
 Conc: 730.62 ng/ml



#2 Toxaphene-1

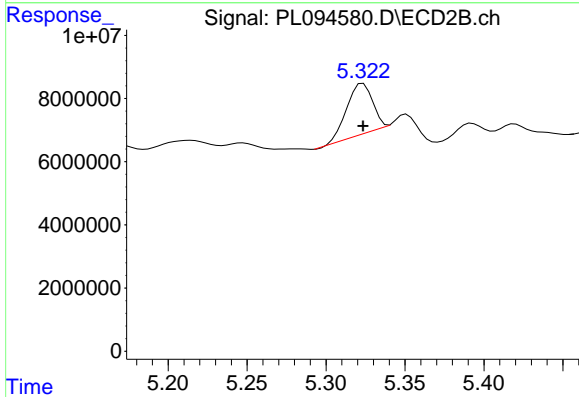
R.T.: 4.998 min  
 Delta R.T.: 0.000 min  
 Response: 19000414  
 Conc: 734.04 ng/ml



#3 Toxaphene-2

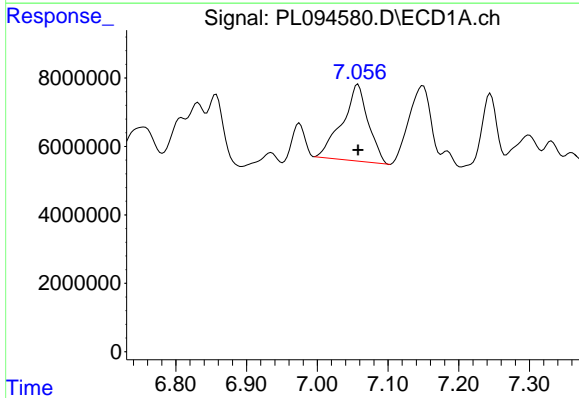
R.T.: 6.441 min  
 Delta R.T.: 0.000 min  
 Response: 11741346  
 Conc: 732.43 ng/ml

Instrument :  
 ECD\_L  
 ClientSampleId :  
 PTOXICC750



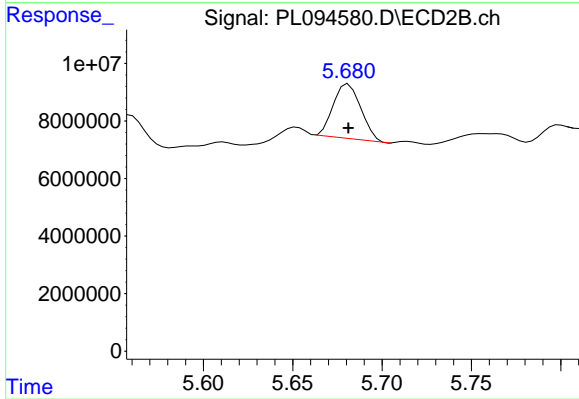
#3 Toxaphene-2

R.T.: 5.324 min  
 Delta R.T.: 0.000 min  
 Response: 17982430  
 Conc: 711.95 ng/ml



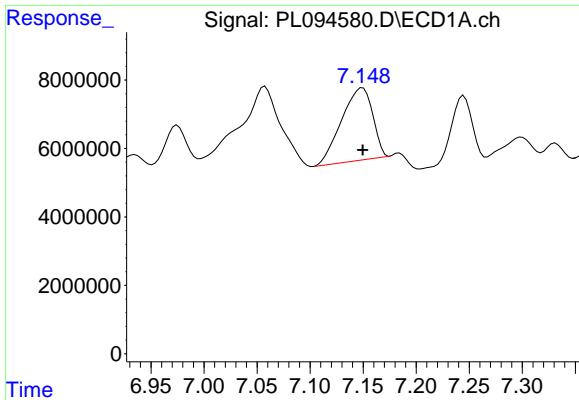
#4 Toxaphene-3

R.T.: 7.058 min  
 Delta R.T.: 0.000 min  
 Response: 57160986  
 Conc: 719.77 ng/ml



#4 Toxaphene-3

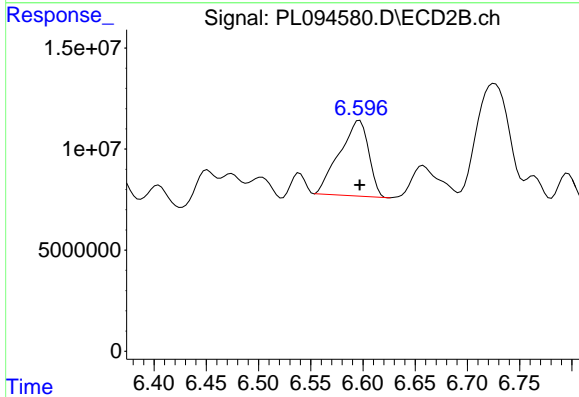
R.T.: 5.681 min  
 Delta R.T.: 0.000 min  
 Response: 20424341  
 Conc: 728.60 ng/ml



#5 Toxaphene-4

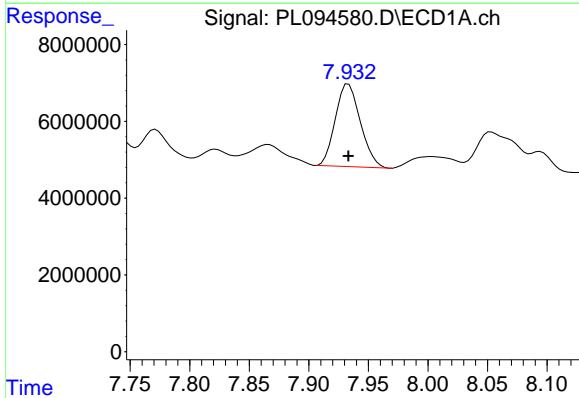
R.T.: 7.149 min  
 Delta R.T.: 0.000 min  
 Response: 43102634  
 Conc: 719.93 ng/ml

Instrument :  
 ECD\_L  
 ClientSampleId :  
 PTOXICC750



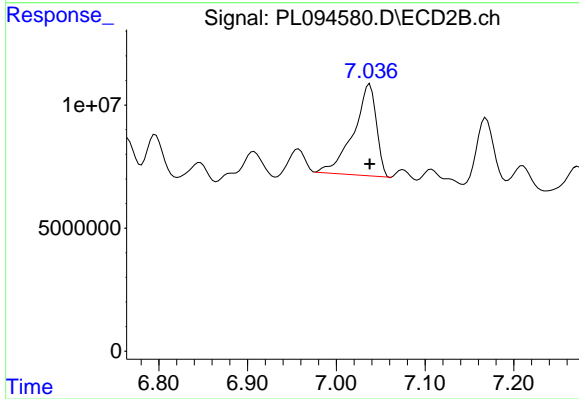
#5 Toxaphene-4

R.T.: 6.597 min  
 Delta R.T.: 0.000 min  
 Response: 72687868  
 Conc: 731.07 ng/ml



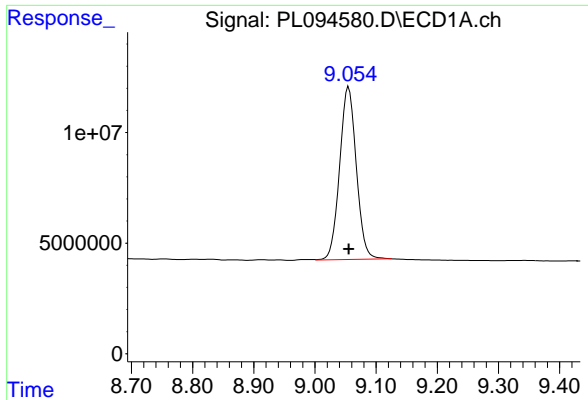
#6 Toxaphene-5

R.T.: 7.933 min  
 Delta R.T.: 0.000 min  
 Response: 31546640  
 Conc: 723.47 ng/ml



#6 Toxaphene-5

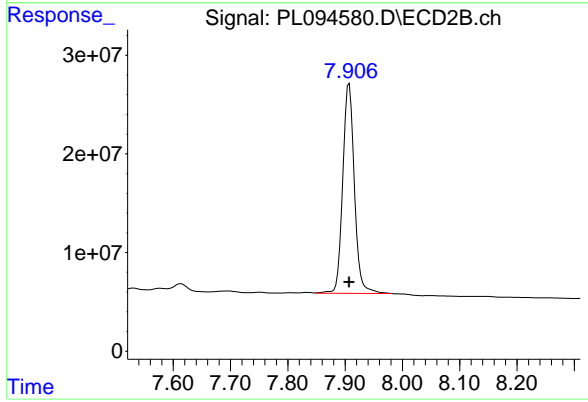
R.T.: 7.038 min  
 Delta R.T.: 0.000 min  
 Response: 66690404  
 Conc: 718.99 ng/ml



#7 Decachlorobiphenyl

R.T.: 9.055 min  
Delta R.T.: 0.000 min  
Response: 146954590  
Conc: 72.22 ng/ml

Instrument :  
ECD\_L  
ClientSampleId :  
PTOXICC750



#7 Decachlorobiphenyl

R.T.: 7.907 min  
Delta R.T.: 0.000 min  
Response: 300445208  
Conc: 72.37 ng/ml