

Data Path : Z:\pestpcbsrv\HPCHEM1\ECD_L\Data\PL031219\
 Data File : PL045743.D
 Signal(s) : Signal #1: ECD1A.ch Signal #2: ECD2B.ch
 Acq On : 12 Mar 2019 15:29
 Operator : AJ\SJ
 Sample : K1692-02MSD
 Misc :
 ALS Vial : 27 Sample Multiplier: 1

Instrument :
 ECD_L
 ClientSampleId :
 OK-01-030819MSD

Integration File signal 1: autoint1.e
 Integration File signal 2: autoint2.e
 Quant Time: Mar 13 01:18:59 2019
 Quant Method : Z:\pestpcbsrv\HPCHEM1\ECD_L\methods\PL022719.M
 Quant Title : GC Extractables
 QLast Update : Wed Feb 27 17:00:03 2019
 Response via : Initial Calibration
 Integrator: ChemStation

Volume Inj. : 1 µl
 Signal #1 Phase : ZB-MR2 Signal #2 Phase: ZB-MR1
 Signal #1 Info : 30M x 0.32mm x0.2 Signal #2 Info : 30M x 0.32mm x0.5µm

	Compound	RT#1	RT#2	Resp#1	Resp#2	ng/ml	ng/ml

System Monitoring Compounds							
1)	SA Tetrachlo...	3.363	3.981	147.7E6	46465120	21.473	21.697
28)	SA Decachlor...	8.044	9.037	156.1E6	47137814	18.658	20.630
Target Compounds							
2)	A alpha-BHC	3.792	4.371	639.2E6	176.0E6	57.545	57.929
3)	MA gamma-BHC...	4.070	4.655	590.2E6	162.8E6	58.392	57.619
4)	MA Heptachlor	4.357	5.162	610.4E6	169.3E6	57.846	56.894
5)	MB Aldrin	4.598	5.466	560.7E6	152.2E6	57.647	56.362
6)	B beta-BHC	4.322	4.827	242.2E6	72369651	56.507	56.986
7)	B delta-BHC	4.519	5.043	573.4E6	123.7E6	59.989	57.492
8)	B Heptachlo...	5.035	5.852	528.4E6	138.7E6	56.613	57.746
9)	A Endosulfan I	5.367	6.209	502.1E6	135.7E6	56.171	54.484
10)	B gamma-Chl...	5.259	6.086	553.9E6	147.4E6	56.597	54.948
11)	B alpha-Chl...	5.315	6.159	535.5E6	146.7E6	55.224	54.368
12)	B 4,4'-DDE	5.482	6.317	524.0E6	129.2E6	59.689	55.294
13)	MA Dieldrin	5.607	6.465	548.2E6	142.3E6	57.352	55.387
14)	MA Endrin	5.861	6.683	524.3E6	128.6E6	58.214	56.532
15)	B Endosulfa...	6.135	6.893	470.4E6	123.3E6	54.269	52.411
16)	A 4,4'-DDD	5.993	6.806	424.6E6	108.9E6	57.985	56.635
17)	MA 4,4'-DDT	6.229	7.105	400.7E6	105.8E6	53.430	53.619
18)	B Endrin al...	6.302	7.017	390.1E6	107.6E6	53.362	52.624
19)	B Endosulfa...	6.513	7.239	430.6E6	118.9E6	52.981	52.842
20)	A Methoxychlor	6.774	7.562	218.0E6	52839082	49.637	43.049
21)	B Endrin ke...	6.997	7.709	420.8E6	124.7E6	45.676	52.410
22)	Mirex	7.173	8.162	347.2E6	98081034	46.664	49.245
24)	Chlordane-2	0.000	5.466f	0	152.2E6	N.D.	1259.878 #
25)	Chlordane-3	5.259	6.086	553.9E6	147.4E6	482.916	378.366
26)	Chlordane-4	5.315	6.159	535.5E6	146.7E6	505.172	313.510 #
27)	Chlordane-5	6.135	0.000	470.4E6	0	1362.206	N.D. #

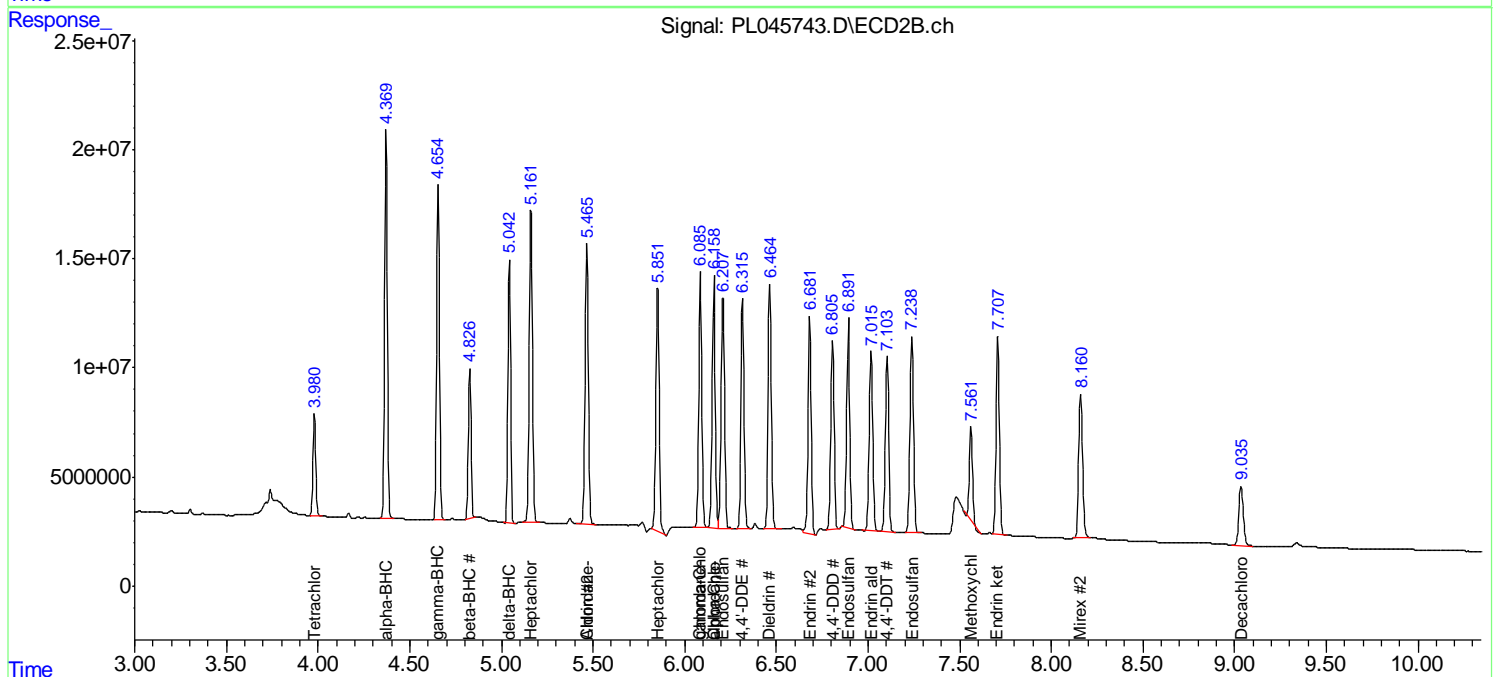
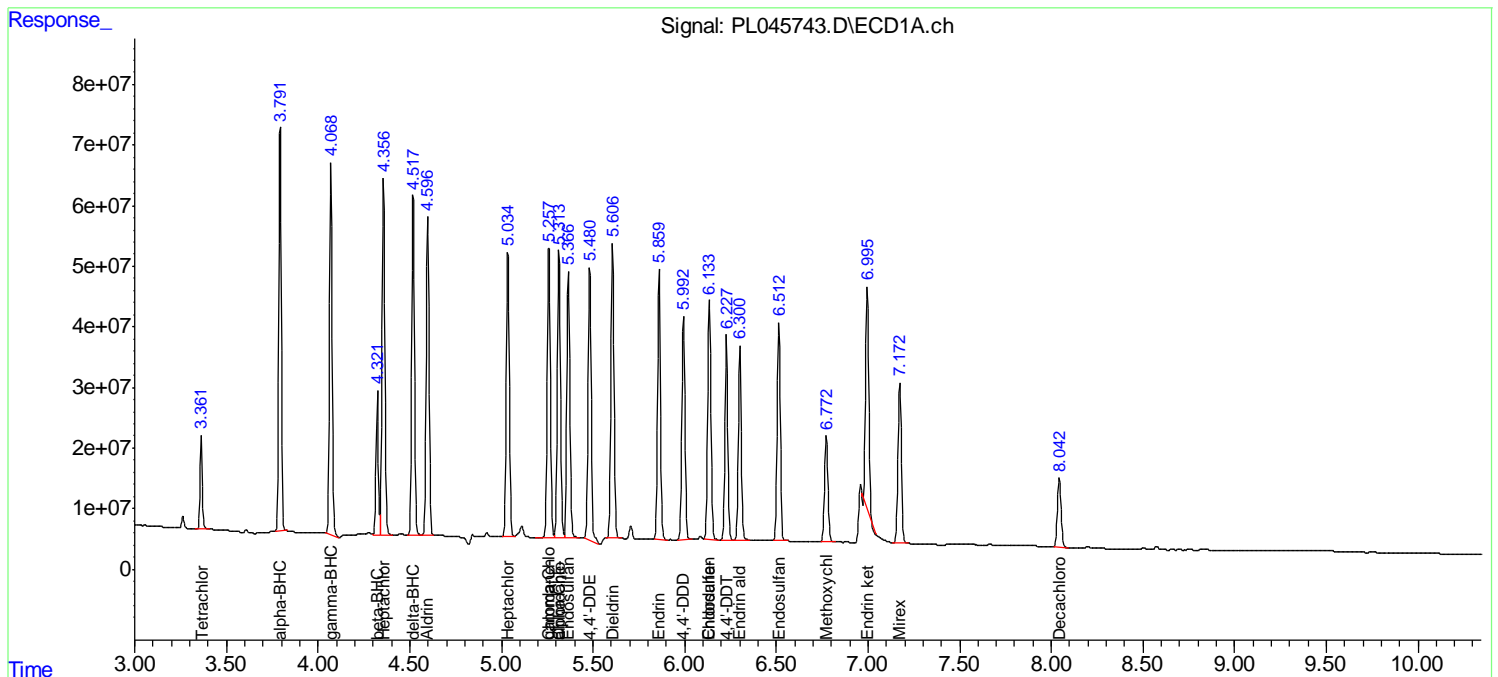
(f)=RT Delta > 1/2 Window (#)=Amounts differ by > 25% (m)=manual int.

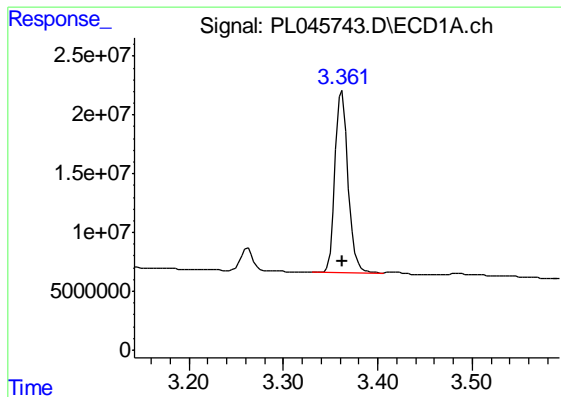
Data Path : Z:\pestpcbsrv\HPCHEM1\ECD_L\Data\PL031219\
 Data File : PL045743.D
 Signal(s) : Signal #1: ECD1A.ch Signal #2: ECD2B.ch
 Acq On : 12 Mar 2019 15:29
 Operator : AJ\SJ
 Sample : K1692-02MSD
 Misc :
 ALS Vial : 27 Sample Multiplier: 1

Instrument :
 ECD_L
 Client Sampled :
 OK-01-030819MSD

Integration File signal 1: autoint1.e
 Integration File signal 2: autoint2.e
 Quant Time: Mar 13 01:18:59 2019
 Quant Method : Z:\pestpcbsrv\HPCHEM1\ECD_L\methods\PL022719.M
 Quant Title : GC Extractables
 QLast Update : Wed Feb 27 17:00:03 2019
 Response via : Initial Calibration
 Integrator: ChemStation

Volume Inj. : 1 µl
 Signal #1 Phase : ZB-MR2 Signal #2 Phase: ZB-MR1
 Signal #1 Info : 30M x 0.32mm x0.2 Signal #2 Info : 30M x 0.32mm x0.5µm

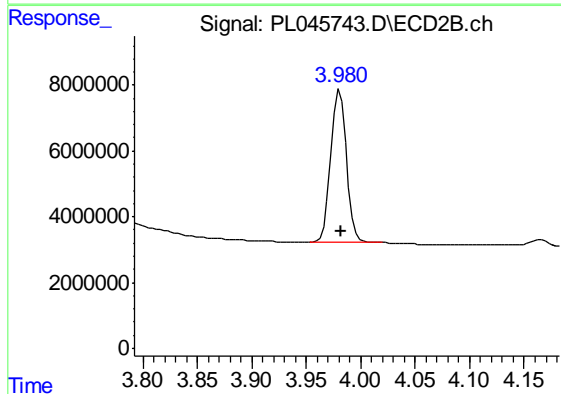




#1 Tetrachloro-m-xylene

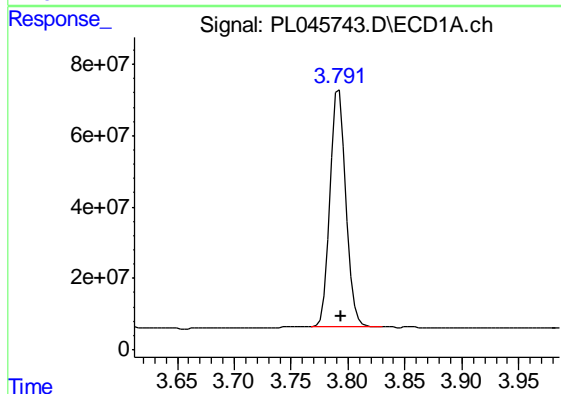
R.T.: 3.363 min
 Delta R.T.: 0.000 min
 Response: 147720633
 Conc: 21.47 ng/ml

Instrument :
 ECD_L
 ClientSampleId :
 OK-01-030819MSD



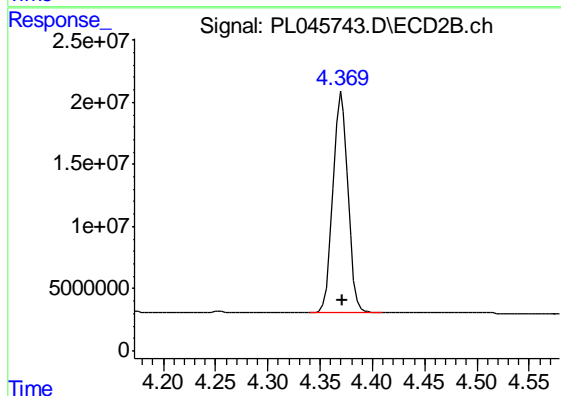
#1 Tetrachloro-m-xylene

R.T.: 3.981 min
 Delta R.T.: 0.000 min
 Response: 46465120
 Conc: 21.70 ng/ml



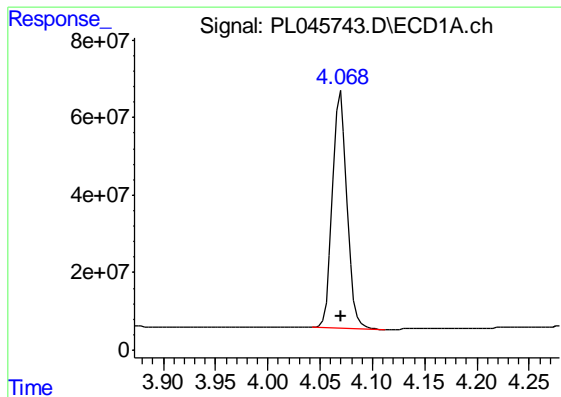
#2 alpha-BHC

R.T.: 3.792 min
 Delta R.T.: -0.001 min
 Response: 639169500
 Conc: 57.54 ng/ml



#2 alpha-BHC

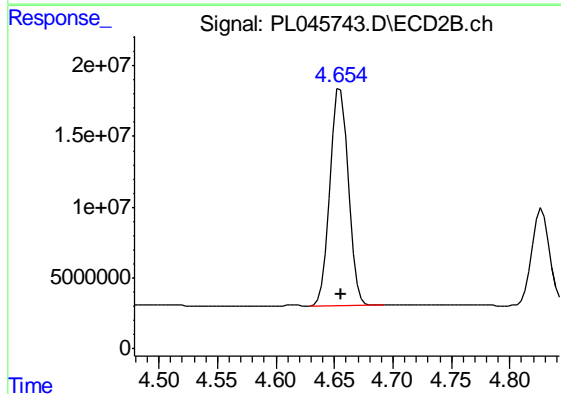
R.T.: 4.371 min
 Delta R.T.: 0.000 min
 Response: 176025817
 Conc: 57.93 ng/ml



#3 gamma-BHC (Lindane)

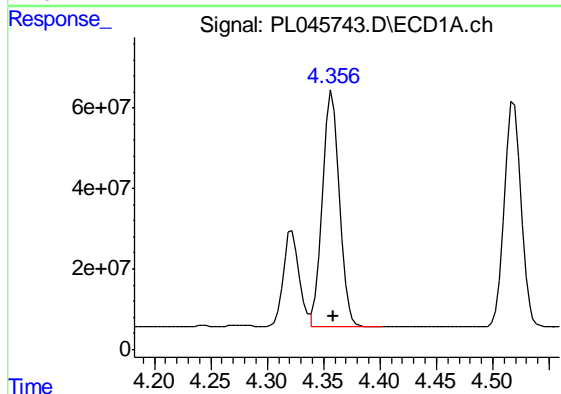
R.T.: 4.070 min
 Delta R.T.: 0.000 min
 Response: 590181762
 Conc: 58.39 ng/ml

Instrument :
 ECD_L
 ClientSampleId :
 OK-01-030819MSD



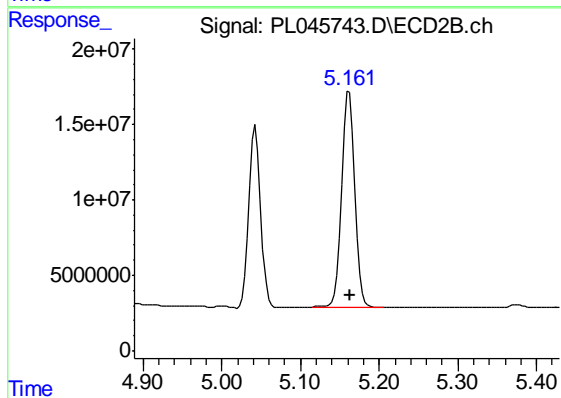
#3 gamma-BHC (Lindane)

R.T.: 4.655 min
 Delta R.T.: 0.000 min
 Response: 162751321
 Conc: 57.62 ng/ml



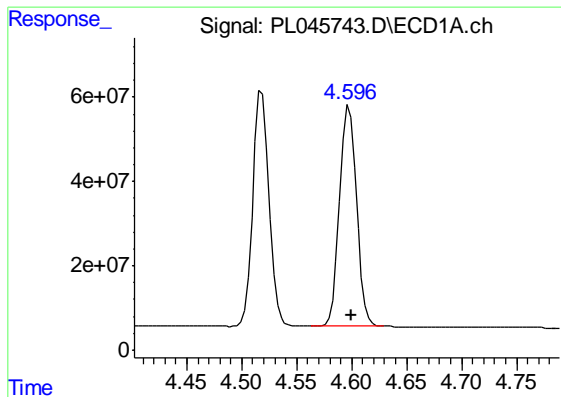
#4 Heptachlor

R.T.: 4.357 min
 Delta R.T.: -0.001 min
 Response: 610408554
 Conc: 57.85 ng/ml



#4 Heptachlor

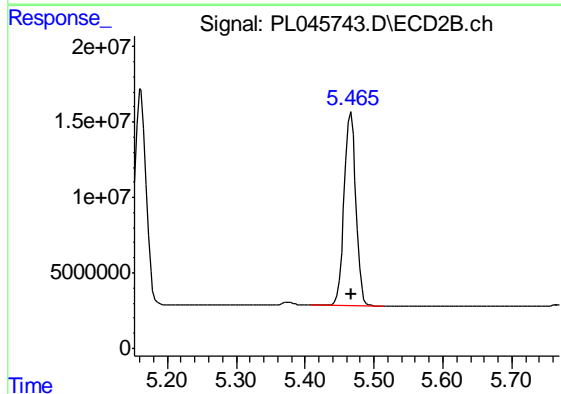
R.T.: 5.162 min
 Delta R.T.: -0.001 min
 Response: 169256973
 Conc: 56.89 ng/ml



#5 Aldrin

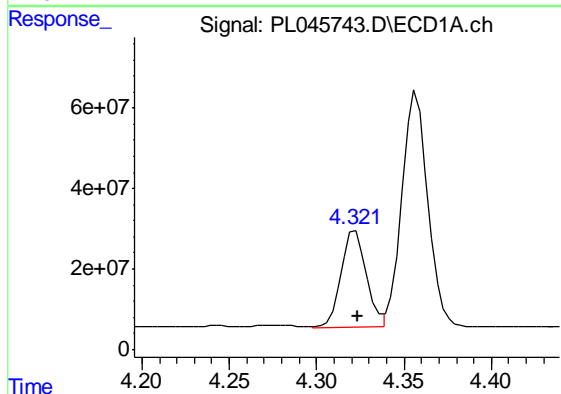
R.T.: 4.598 min
 Delta R.T.: -0.001 min
 Response: 560700080
 Conc: 57.65 ng/ml

Instrument :
 ECD_L
 ClientSampleId :
 OK-01-030819MSD



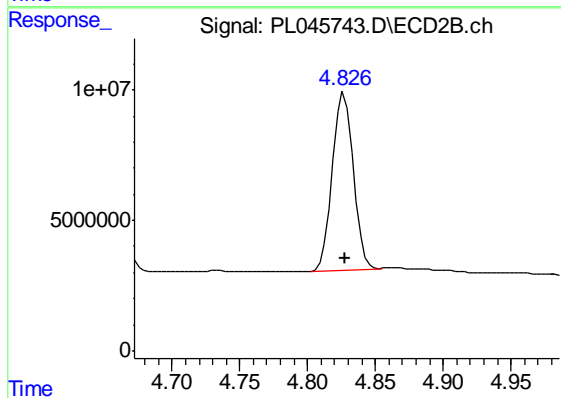
#5 Aldrin

R.T.: 5.466 min
 Delta R.T.: -0.001 min
 Response: 152231225
 Conc: 56.36 ng/ml



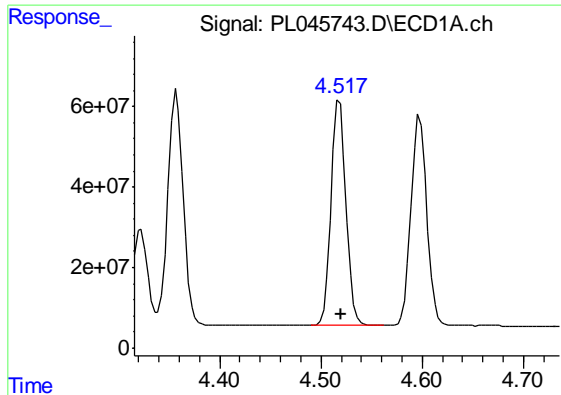
#6 beta-BHC

R.T.: 4.322 min
 Delta R.T.: -0.001 min
 Response: 242191967
 Conc: 56.51 ng/ml



#6 beta-BHC

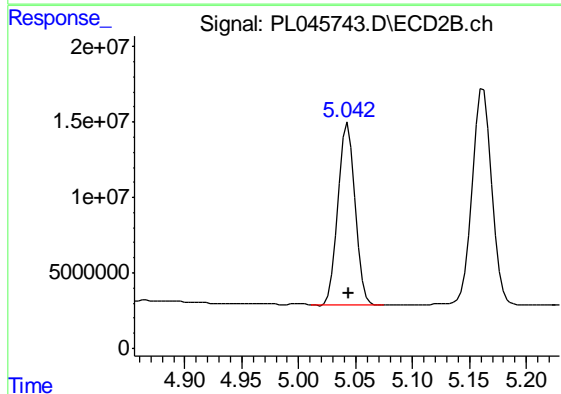
R.T.: 4.827 min
 Delta R.T.: 0.000 min
 Response: 72369651
 Conc: 56.99 ng/ml



#7 delta-BHC

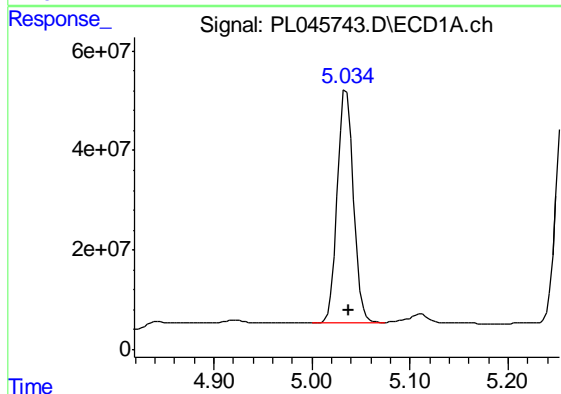
R.T.: 4.519 min
 Delta R.T.: -0.001 min
 Response: 573372061
 Conc: 59.99 ng/ml

Instrument :
 ECD_L
 ClientSampleId :
 OK-01-030819MSD



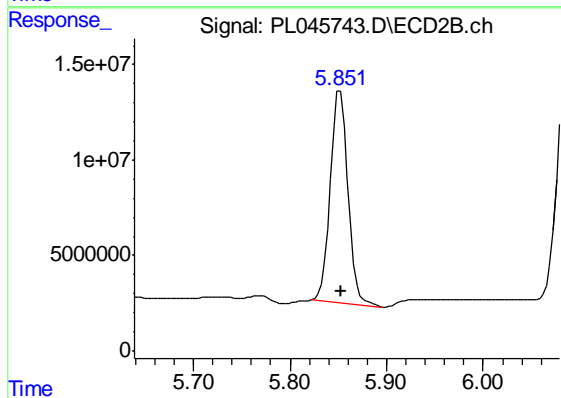
#7 delta-BHC

R.T.: 5.043 min
 Delta R.T.: 0.000 min
 Response: 123658445
 Conc: 57.49 ng/ml



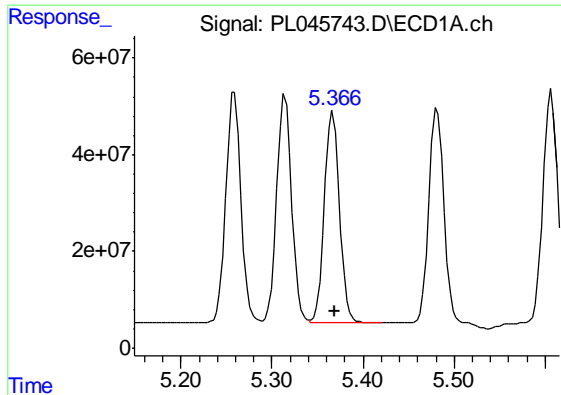
#8 Heptachlor epoxide

R.T.: 5.035 min
 Delta R.T.: -0.002 min
 Response: 528371542
 Conc: 56.61 ng/ml



#8 Heptachlor epoxide

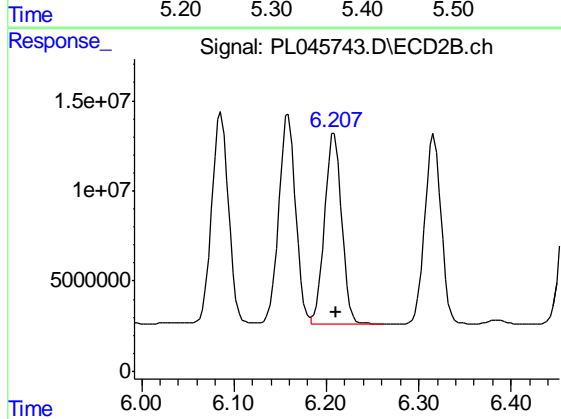
R.T.: 5.852 min
 Delta R.T.: -0.002 min
 Response: 138701509
 Conc: 57.75 ng/ml



#9 Endosulfan I

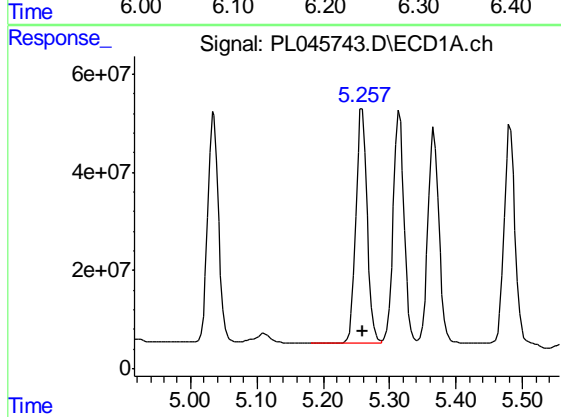
R.T.: 5.367 min
Delta R.T.: -0.002 min
Response: 502073246
Conc: 56.17 ng/ml

Instrument :
ECD_L
ClientSampleId :
OK-01-030819MSD



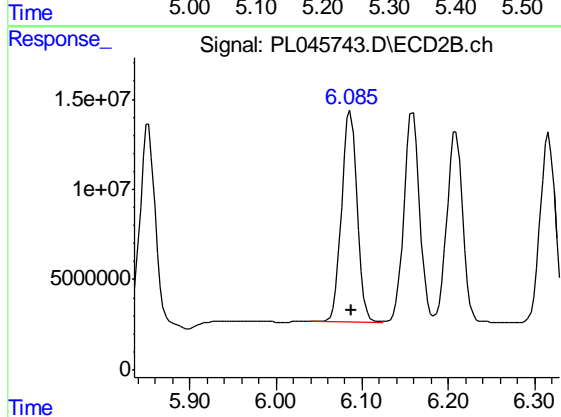
#9 Endosulfan I

R.T.: 6.209 min
Delta R.T.: -0.001 min
Response: 135681160
Conc: 54.48 ng/ml



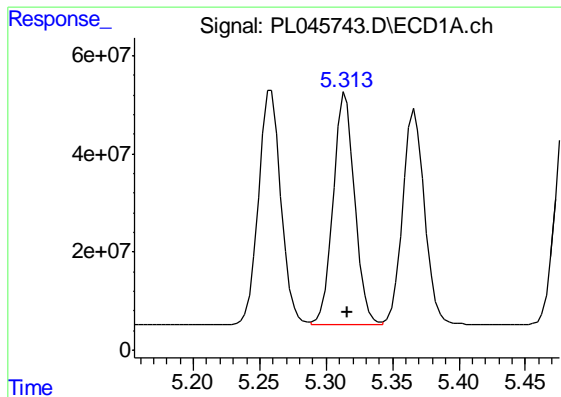
#10 gamma-Chlordane

R.T.: 5.259 min
Delta R.T.: -0.002 min
Response: 553915004
Conc: 56.60 ng/ml



#10 gamma-Chlordane

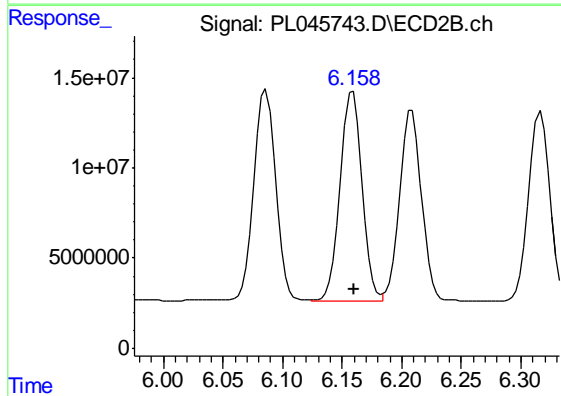
R.T.: 6.086 min
Delta R.T.: -0.002 min
Response: 147422667
Conc: 54.95 ng/ml



#11 alpha-Chlordane

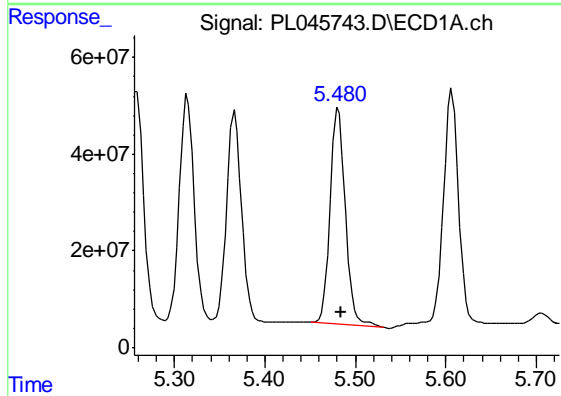
R.T.: 5.315 min
Delta R.T.: -0.002 min
Response: 535508766
Conc: 55.22 ng/ml

Instrument :
ECD_L
ClientSampleId :
OK-01-030819MSD



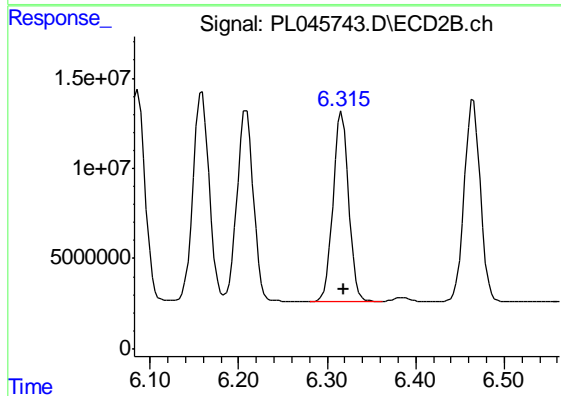
#11 alpha-Chlordane

R.T.: 6.159 min
Delta R.T.: -0.001 min
Response: 146667902
Conc: 54.37 ng/ml



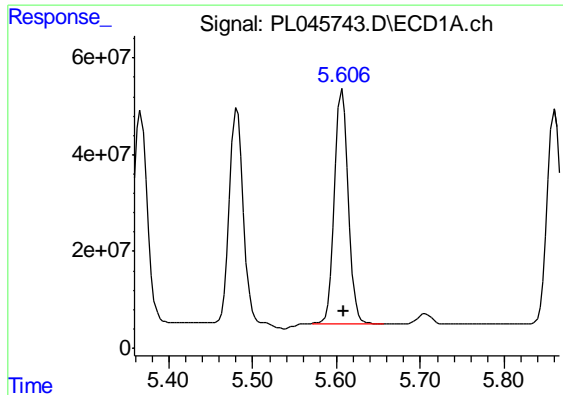
#12 4,4'-DDE

R.T.: 5.482 min
Delta R.T.: -0.002 min
Response: 523963341
Conc: 59.69 ng/ml



#12 4,4'-DDE

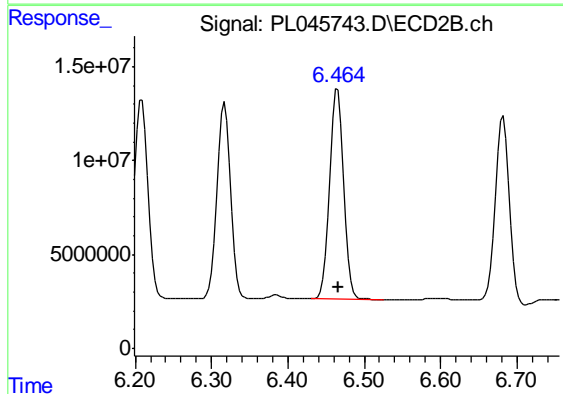
R.T.: 6.317 min
Delta R.T.: -0.001 min
Response: 129160353
Conc: 55.29 ng/ml



#13 Dieldrin

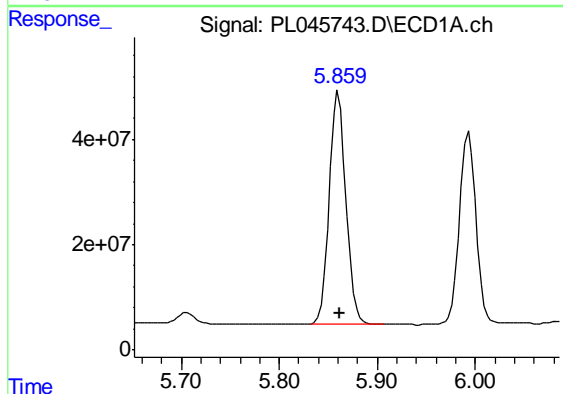
R.T.: 5.607 min
 Delta R.T.: -0.002 min
 Response: 548169250
 Conc: 57.35 ng/ml

Instrument :
 ECD_L
 ClientSampleId :
 OK-01-030819MSD



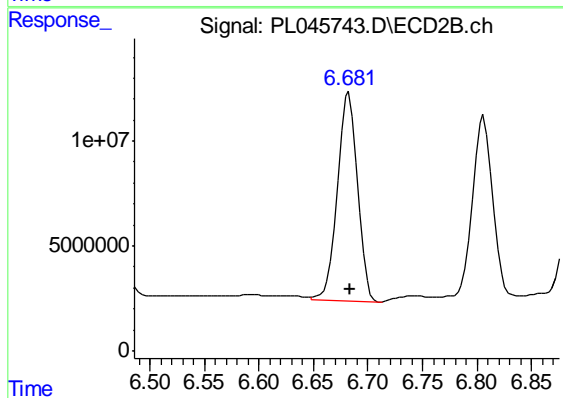
#13 Dieldrin

R.T.: 6.465 min
 Delta R.T.: -0.002 min
 Response: 142330835
 Conc: 55.39 ng/ml



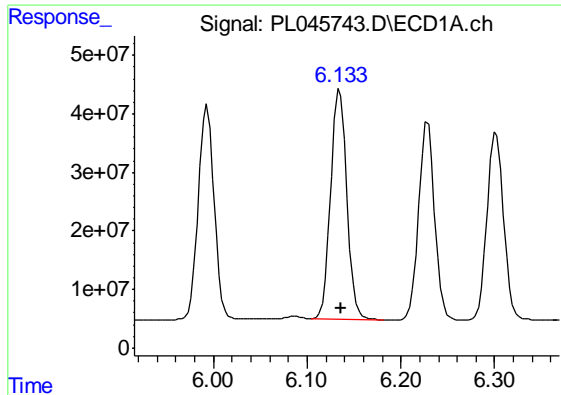
#14 Endrin

R.T.: 5.861 min
 Delta R.T.: -0.002 min
 Response: 524259131
 Conc: 58.21 ng/ml



#14 Endrin

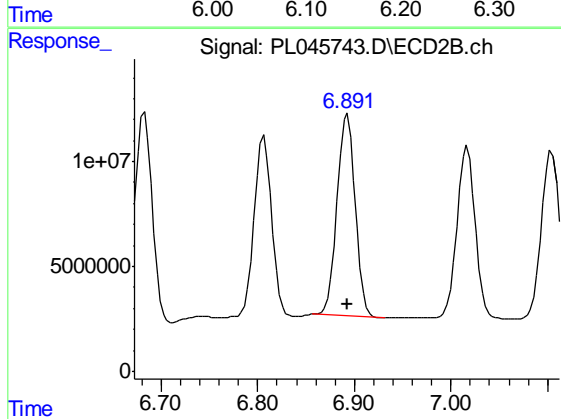
R.T.: 6.683 min
 Delta R.T.: -0.001 min
 Response: 128625920
 Conc: 56.53 ng/ml



#15 Endosulfan II

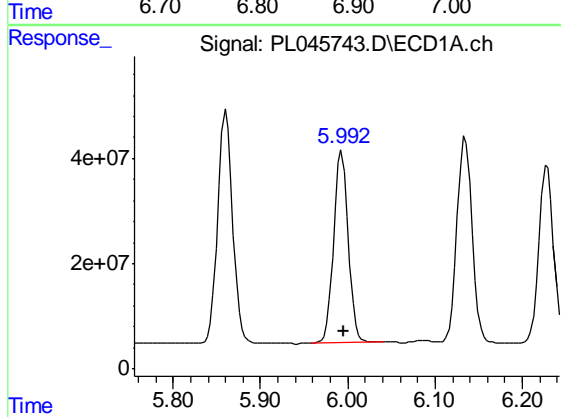
R.T.: 6.135 min
 Delta R.T.: -0.002 min
 Response: 470433236
 Conc: 54.27 ng/ml

Instrument :
 ECD_L
 ClientSampleId :
 OK-01-030819MSD



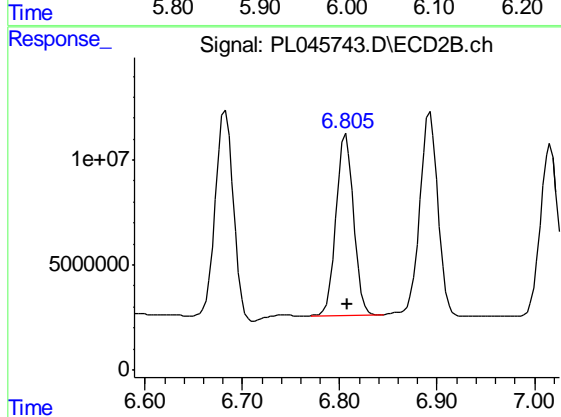
#15 Endosulfan II

R.T.: 6.893 min
 Delta R.T.: 0.000 min
 Response: 123250162
 Conc: 52.41 ng/ml



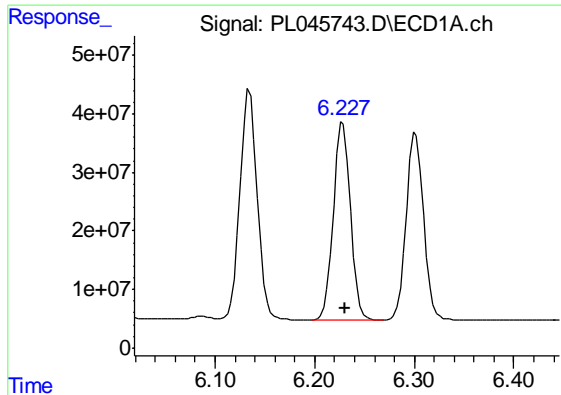
#16 4,4'-DDD

R.T.: 5.993 min
 Delta R.T.: -0.002 min
 Response: 424552337
 Conc: 57.98 ng/ml



#16 4,4'-DDD

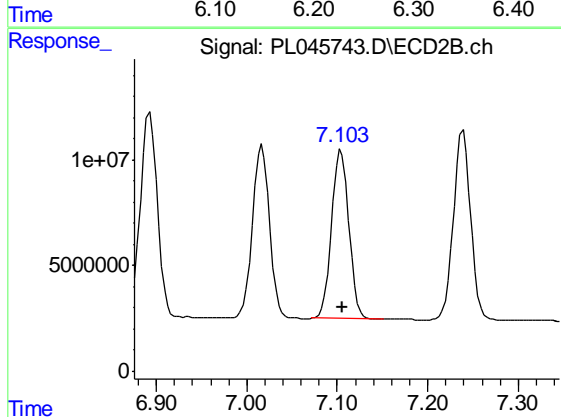
R.T.: 6.806 min
 Delta R.T.: -0.001 min
 Response: 108913583
 Conc: 56.63 ng/ml



#17 4,4'-DDT

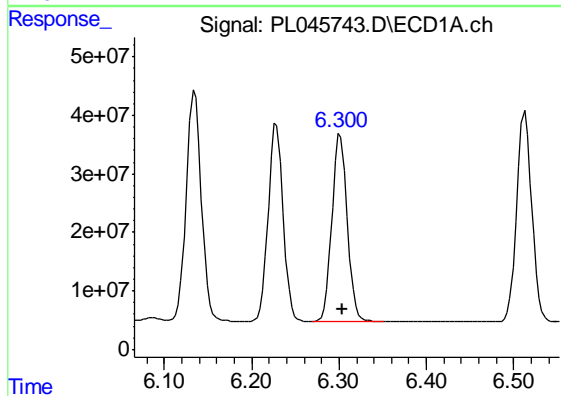
R.T.: 6.229 min
Delta R.T.: -0.002 min
Response: 400727516
Conc: 53.43 ng/ml

Instrument :
ECD_L
ClientSampleId :
OK-01-030819MSD



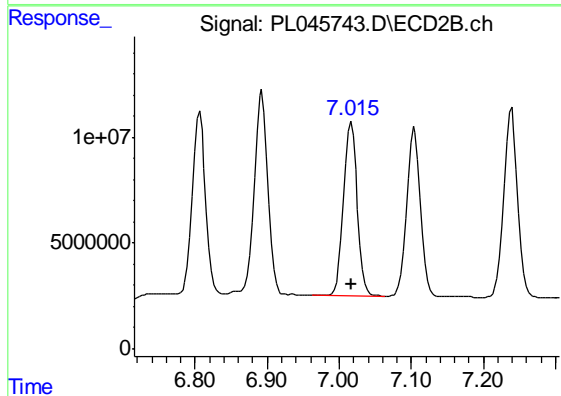
#17 4,4'-DDT

R.T.: 7.105 min
Delta R.T.: -0.001 min
Response: 105813473
Conc: 53.62 ng/ml



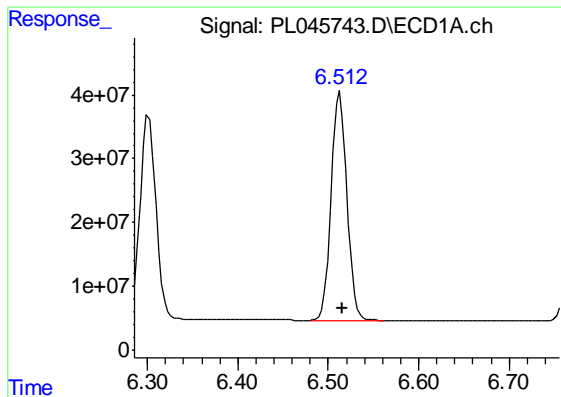
#18 Endrin aldehyde

R.T.: 6.302 min
Delta R.T.: -0.002 min
Response: 390059374
Conc: 53.36 ng/ml



#18 Endrin aldehyde

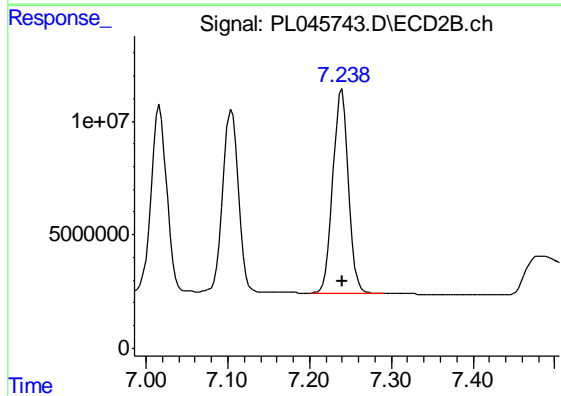
R.T.: 7.017 min
Delta R.T.: 0.000 min
Response: 107574295
Conc: 52.62 ng/ml



#19 Endosulfan Sulfate

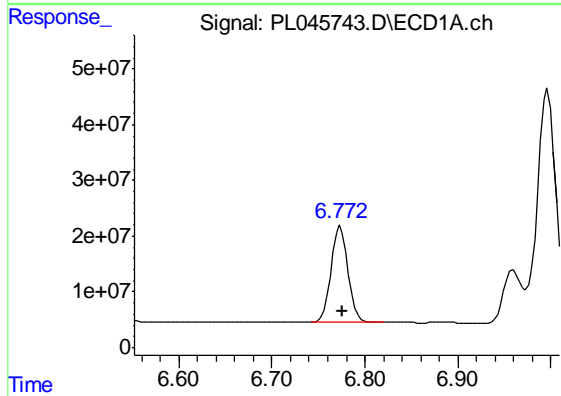
R.T.: 6.513 min
Delta R.T.: -0.002 min
Response: 430633337
Conc: 52.98 ng/ml

Instrument :
ECD_L
ClientSampleId :
OK-01-030819MSD



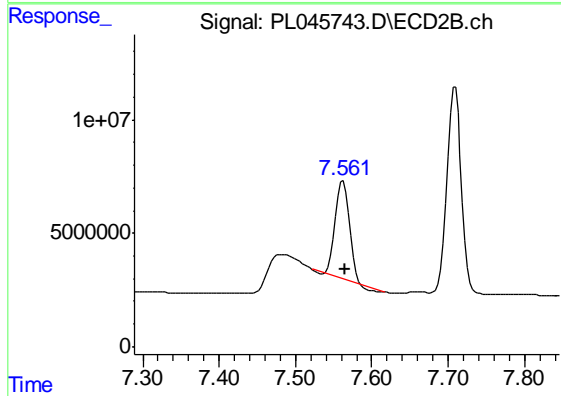
#19 Endosulfan Sulfate

R.T.: 7.239 min
Delta R.T.: -0.001 min
Response: 118868594
Conc: 52.84 ng/ml



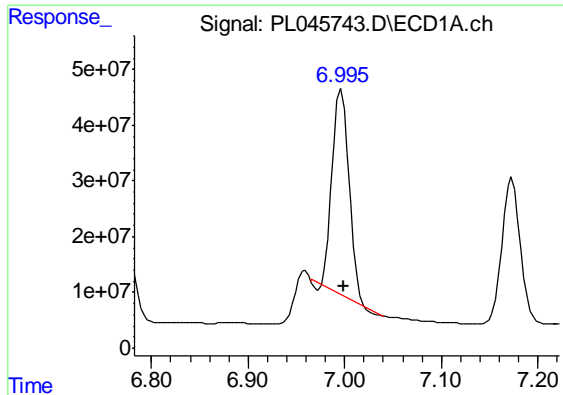
#20 Methoxychlor

R.T.: 6.774 min
Delta R.T.: -0.003 min
Response: 217989742
Conc: 49.64 ng/ml



#20 Methoxychlor

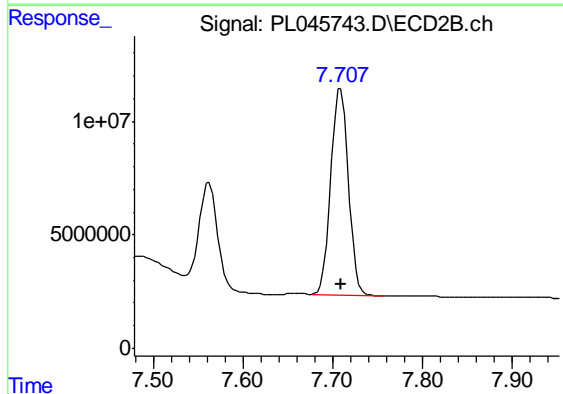
R.T.: 7.562 min
Delta R.T.: -0.002 min
Response: 52839082
Conc: 43.05 ng/ml



#21 Endrin ketone

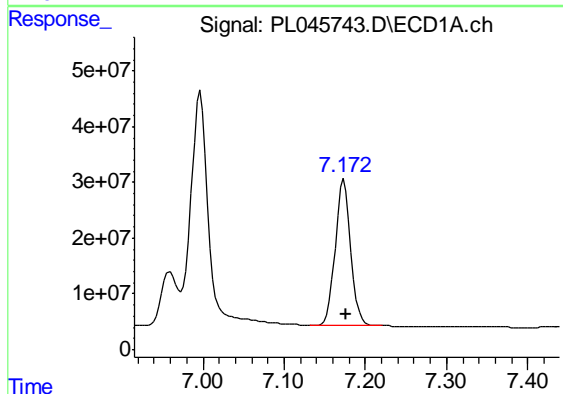
R.T.: 6.997 min
 Delta R.T.: -0.003 min
 Response: 420806013
 Conc: 45.68 ng/ml

Instrument :
 ECD_L
 ClientSampleId :
 OK-01-030819MSD



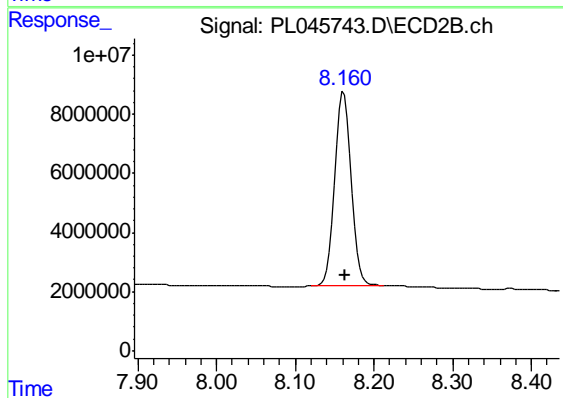
#21 Endrin ketone

R.T.: 7.709 min
 Delta R.T.: -0.001 min
 Response: 124653025
 Conc: 52.41 ng/ml



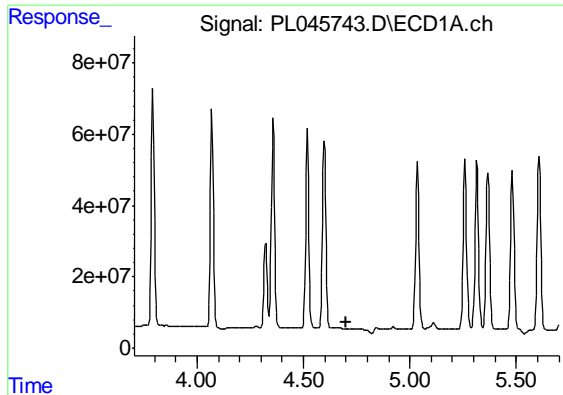
#22 Mirex

R.T.: 7.173 min
 Delta R.T.: -0.003 min
 Response: 347185084
 Conc: 46.66 ng/ml



#22 Mirex

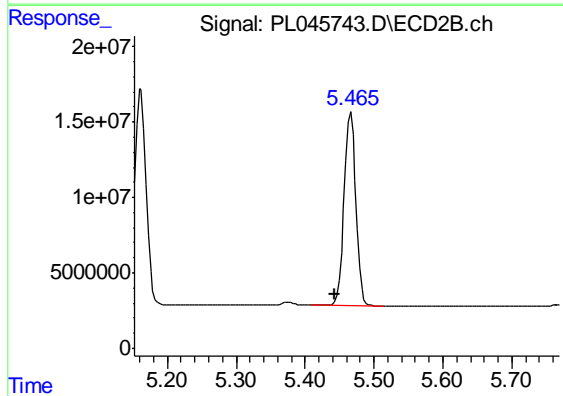
R.T.: 8.162 min
 Delta R.T.: -0.001 min
 Response: 98081034
 Conc: 49.25 ng/ml



#24 Chlordane-2

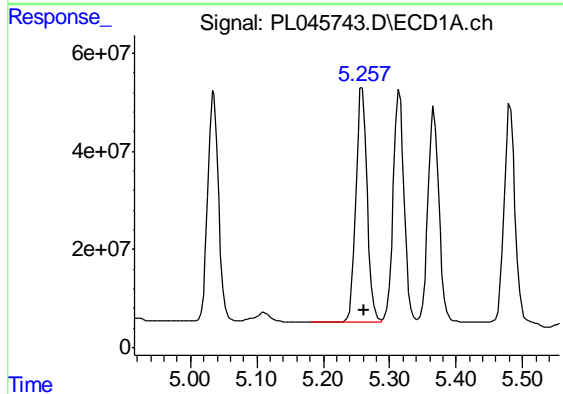
R.T.: 0.000 min
 Exp R.T. : 4.704 min
 Response: 0
 Conc: N.D.

Instrument :
 ECD_L
 ClientSampleId :
 OK-01-030819MSD



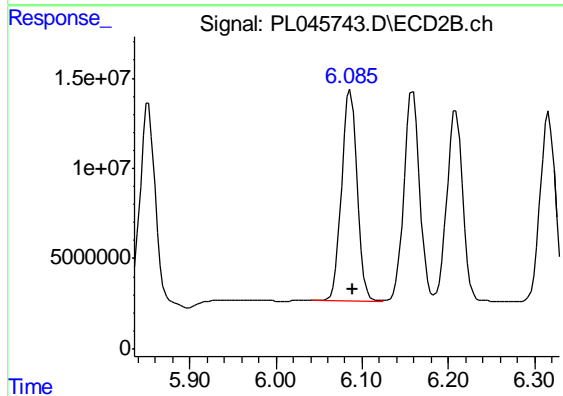
#24 Chlordane-2

R.T.: 5.466 min
 Delta R.T.: 0.023 min
 Response: 152231225
 Conc: 1259.88 ng/ml



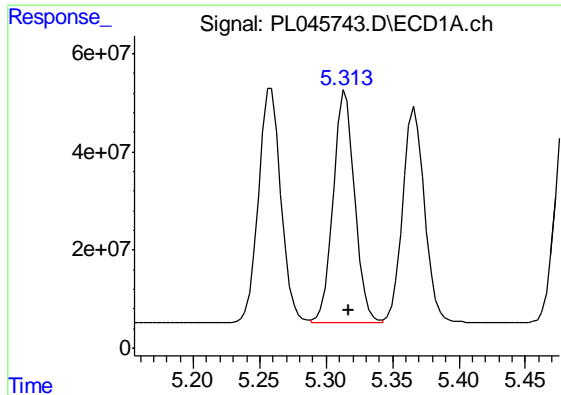
#25 Chlordane-3

R.T.: 5.259 min
 Delta R.T.: -0.003 min
 Response: 553915004
 Conc: 482.92 ng/ml



#25 Chlordane-3

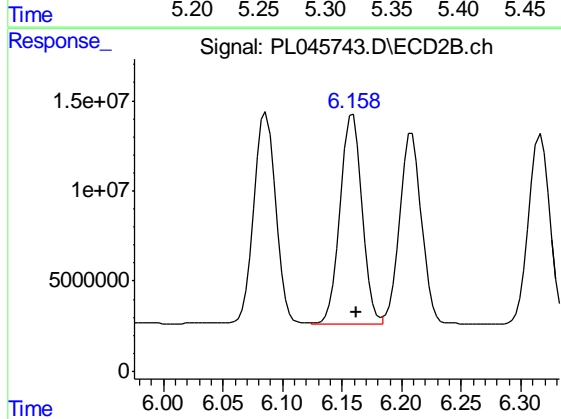
R.T.: 6.086 min
 Delta R.T.: -0.003 min
 Response: 147422667
 Conc: 378.37 ng/ml



#26 Chlordane-4

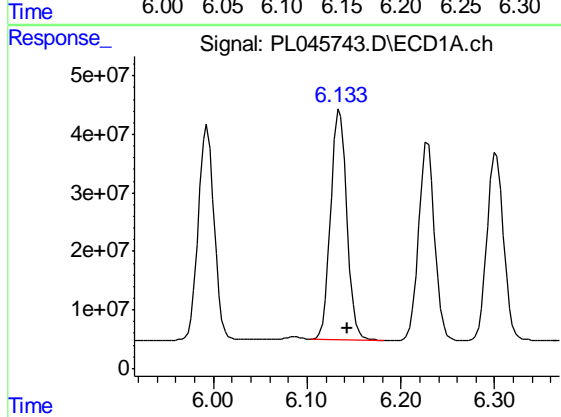
R.T.: 5.315 min
 Delta R.T.: -0.002 min
 Response: 535508766
 Conc: 505.17 ng/ml

Instrument :
 ECD_L
 ClientSampleId :
 OK-01-030819MSD



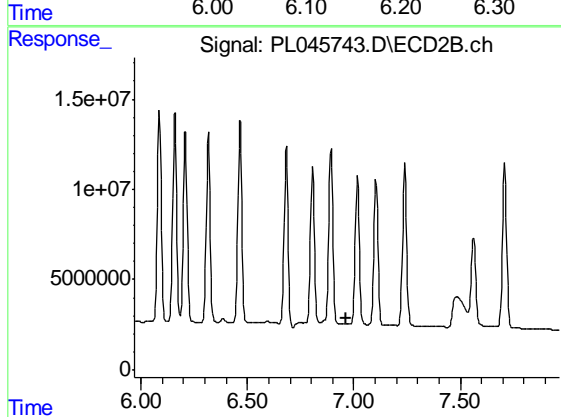
#26 Chlordane-4

R.T.: 6.159 min
 Delta R.T.: -0.003 min
 Response: 146667902
 Conc: 313.51 ng/ml



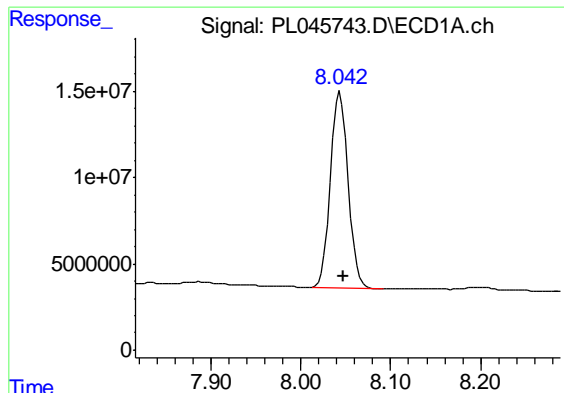
#27 Chlordane-5

R.T.: 6.135 min
 Delta R.T.: -0.008 min
 Response: 470433236
 Conc: 1362.21 ng/ml



#27 Chlordane-5

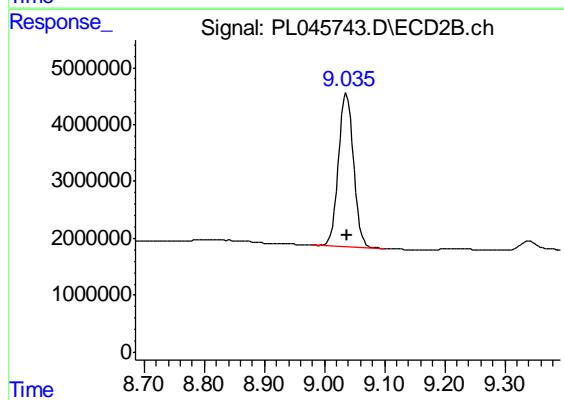
R.T.: 0.000 min
 Exp R.T. : 6.966 min
 Response: 0
 Conc: N.D.



#28 Decachlorobiphenyl

R.T.: 8.044 min
Delta R.T.: -0.004 min
Response: 156117281
Conc: 18.66 ng/ml

Instrument :
ECD_L
ClientSampleId :
OK-01-030819MSD



#28 Decachlorobiphenyl

R.T.: 9.037 min
Delta R.T.: -0.002 min
Response: 47137814
Conc: 20.63 ng/ml