

Data Path : Z:\pestpcbsrv\HPCHEM1\ECD_L\Data\PL031219\
 Data File : PL045748.D
 Signal(s) : Signal #1: ECD1A.ch Signal #2: ECD2B.ch
 Acq On : 12 Mar 2019 16:39
 Operator : AJ\SJ
 Sample : PSTDCCC050
 Misc :
 ALS Vial : 4 Sample Multiplier: 1

Instrument :
 ECD_L
 ClientSampleId :
 PSTDCCC050

Integration File signal 1: autoint1.e
 Integration File signal 2: autoint2.e
 Quant Time: Mar 13 01:20:19 2019
 Quant Method : Z:\pestpcbsrv\HPCHEM1\ECD_L\methods\PL022719.M
 Quant Title : GC Extractables
 QLast Update : Wed Feb 27 17:00:03 2019
 Response via : Initial Calibration
 Integrator: ChemStation

Volume Inj. : 1 µl
 Signal #1 Phase : ZB-MR2 Signal #2 Phase: ZB-MR1
 Signal #1 Info : 30M x 0.32mm x0.2 Signal #2 Info : 30M x 0.32mm x0.5µm

Compound	RT#1	RT#2	Resp#1	Resp#2	ng/ml	ng/ml

System Monitoring Compounds						
1) SA Tetrachlo...	3.362	3.981	358.4E6	111.2E6	52.103	51.925
28) SA Decachlor...	8.044	9.038	385.7E6	112.7E6	46.098	49.309
Target Compounds						
2) A alpha-BHC	3.792	4.371	592.6E6	163.6E6	53.351	53.829
3) MA gamma-BHC...	4.069	4.655	545.3E6	150.9E6	53.955	53.420
4) MA Heptachlor	4.357	5.162	559.4E6	155.8E6	53.012	52.370
5) MB Aldrin	4.598	5.466	527.8E6	143.6E6	54.266	53.170
6) B beta-BHC	4.322	4.827	224.6E6	68172154	52.392	53.681
7) B delta-BHC	4.518	5.043	530.7E6	120.0E6	55.524	55.794
8) B Heptachlo...	5.035	5.852	493.8E6	132.6E6	52.909	55.226
9) A Endosulfan I	5.367	6.209	470.1E6	128.1E6	52.598	51.428
10) B gamma-Chl...	5.258	6.087	517.8E6	140.0E6	52.910	52.169
11) B alpha-Chl...	5.314	6.159	508.1E6	138.9E6	52.395	51.480
12) B 4,4'-DDE	5.482	6.317	470.7E6	122.7E6	53.622	52.517
13) MA Dieldrin	5.607	6.466	513.0E6	132.9E6	53.669	51.720
14) MA Endrin	5.860	6.683	479.6E6	117.9E6	53.256	51.798
15) B Endosulfa...	6.135	6.893	447.7E6	116.5E6	51.650	49.559
16) A 4,4'-DDD	5.993	6.807	405.5E6	103.2E6	55.389	53.673
17) MA 4,4'-DDT	6.229	7.105	370.4E6	97169165	49.389	49.238
18) B Endrin al...	6.302	7.017	367.7E6	101.4E6	50.304	49.620
19) B Endosulfa...	6.513	7.239	407.3E6	112.1E6	50.111	49.843
20) A Methoxychlor	6.774	7.564	204.3E6	57705089	46.511	47.013
21) B Endrin ke...	6.997	7.710	449.0E6	118.4E6	48.740	49.800
22) Mirex	7.174	8.162	344.5E6	95604889	46.302	48.002
23) Chlordane-1	4.239f	0.000	6621905	0	19.653	N.D. #
24) Chlordane-2	0.000	5.466f	0	143.6E6	N.D.	1188.522 #
25) Chlordane-3	5.258	6.087	517.8E6	140.0E6	451.452	359.228
26) Chlordane-4	5.314	6.159	508.1E6	138.9E6	479.287	296.858 #
27) Chlordane-5	6.135	0.000	447.7E6	0	1296.472	N.D. #

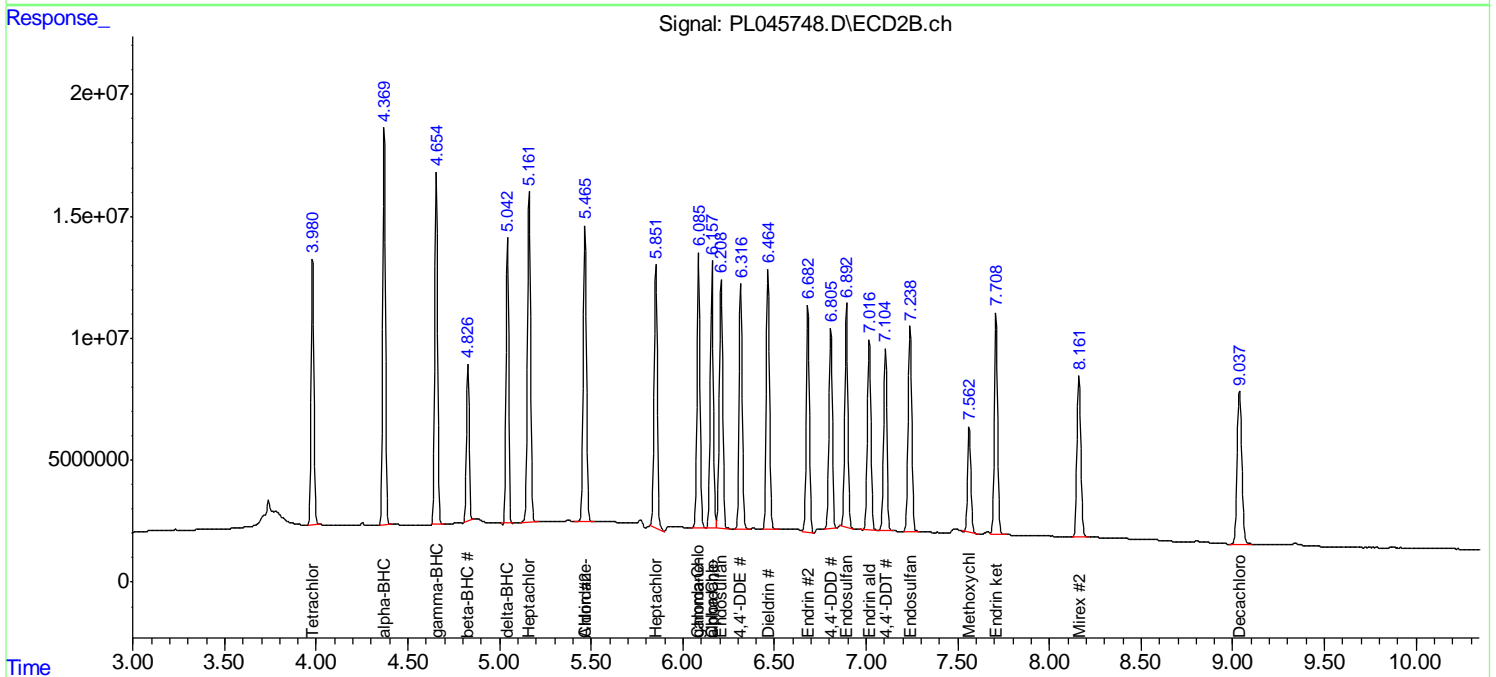
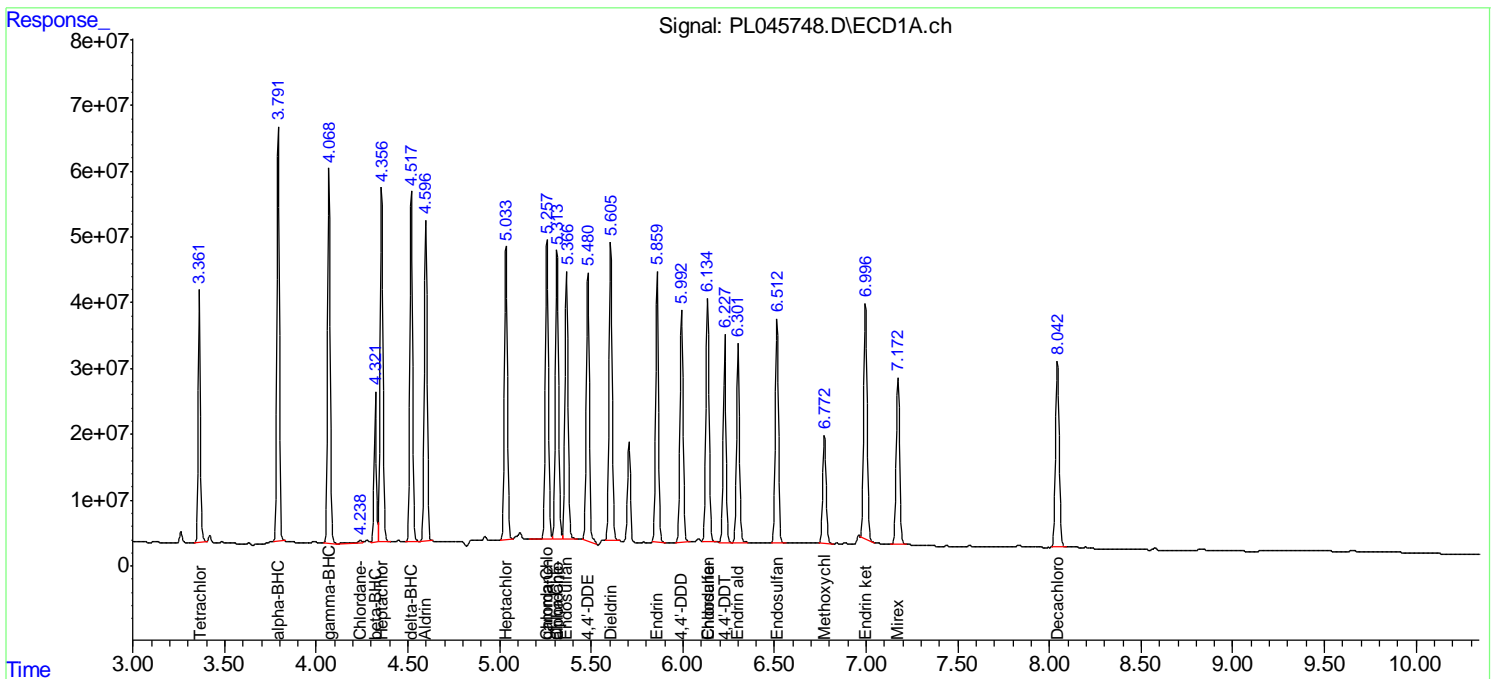
(f)=RT Delta > 1/2 Window (#)=Amounts differ by > 25% (m)=manual int.

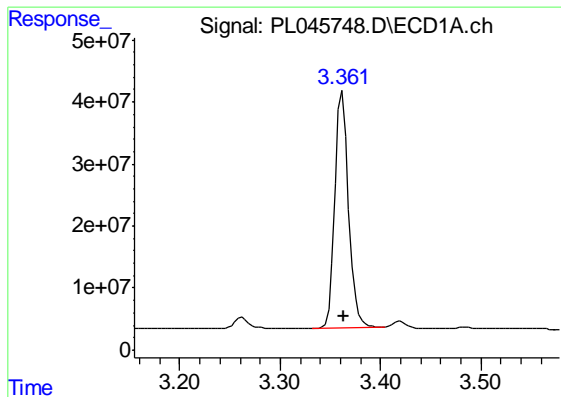
Data Path : Z:\pestpcbsrv\HPCHEM1\ECD_L\Data\PL031219\
 Data File : PL045748.D
 Signal(s) : Signal #1: ECD1A.ch Signal #2: ECD2B.ch
 Acq On : 12 Mar 2019 16:39
 Operator : AJ\SJ
 Sample : PSTDCCC050
 Misc :
 ALS Vial : 4 Sample Multiplier: 1

Instrument :
 ECD_L
 Client Sampled :
 PSTDCCC050

Integration File signal 1: autoint1.e
 Integration File signal 2: autoint2.e
 Quant Time: Mar 13 01:20:19 2019
 Quant Method : Z:\pestpcbsrv\HPCHEM1\ECD_L\methods\PL022719.M
 Quant Title : GC Extractables
 QLast Update : Wed Feb 27 17:00:03 2019
 Response via : Initial Calibration
 Integrator: ChemStation

Volume Inj. : 1 µl
 Signal #1 Phase : ZB-MR2 Signal #2 Phase: ZB-MR1
 Signal #1 Info : 30M x 0.32mm x0.2 Signal #2 Info : 30M x 0.32mm x0.5µm

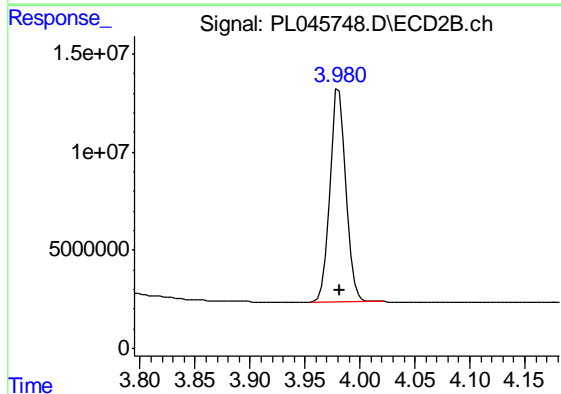




#1 Tetrachloro-m-xylene

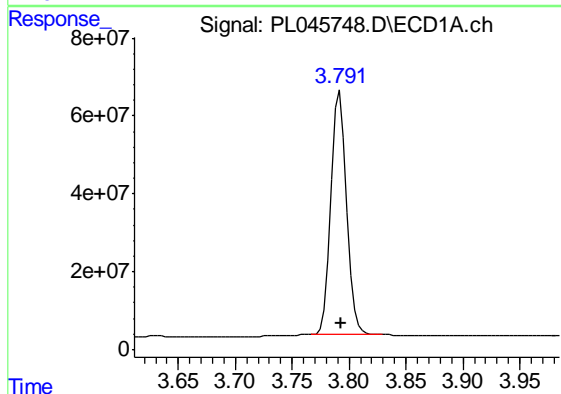
R.T.: 3.362 min
Delta R.T.: 0.000 min
Response: 358433114
Conc: 52.10 ng/ml

Instrument :
ECD_L
ClientSampleId :
PSTDCCC050



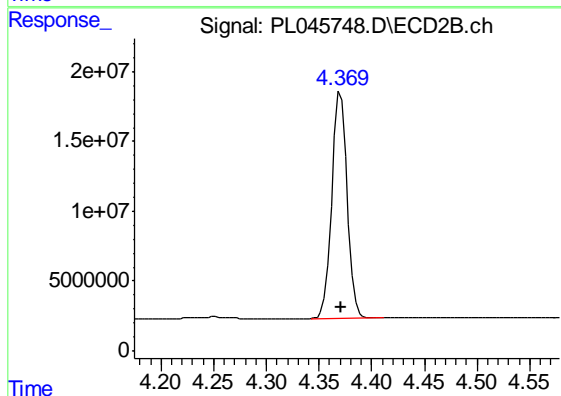
#1 Tetrachloro-m-xylene

R.T.: 3.981 min
Delta R.T.: 0.000 min
Response: 111199619
Conc: 51.93 ng/ml



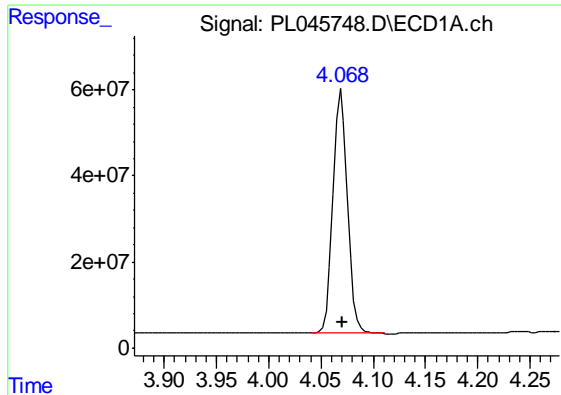
#2 alpha-BHC

R.T.: 3.792 min
Delta R.T.: -0.002 min
Response: 592588332
Conc: 53.35 ng/ml



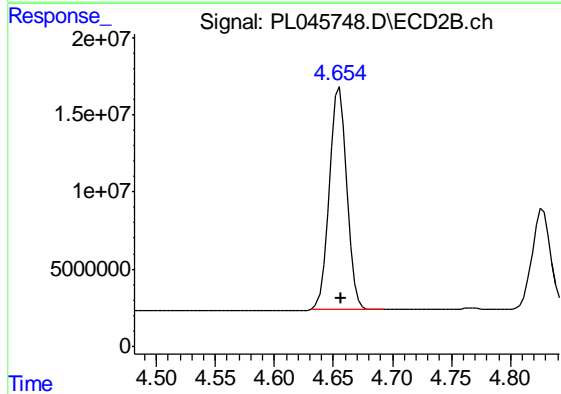
#2 alpha-BHC

R.T.: 4.371 min
Delta R.T.: 0.000 min
Response: 163568719
Conc: 53.83 ng/ml

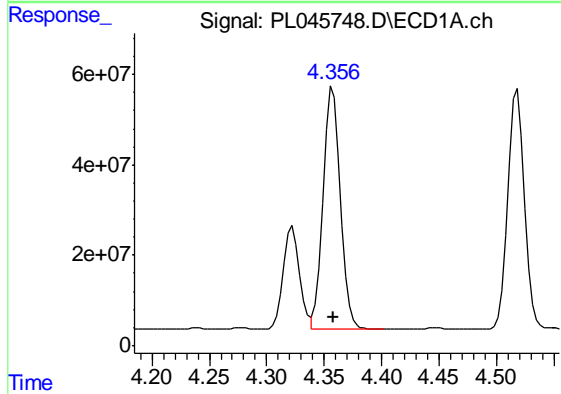


#3 gamma-BHC (Lindane)
 R.T.: 4.069 min
 Delta R.T.: -0.001 min
 Response: 545331858
 Conc: 53.95 ng/ml

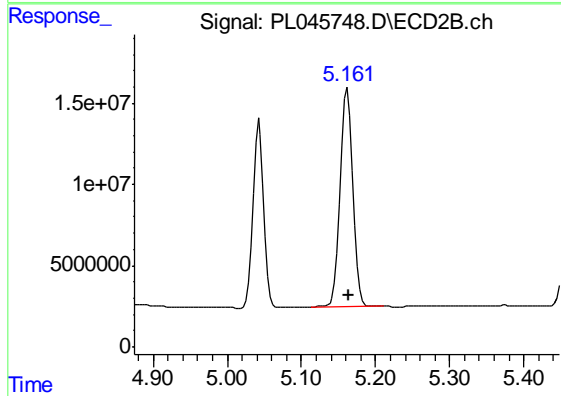
Instrument :
 ECD_L
 ClientSampleId :
 PSTDCCC050



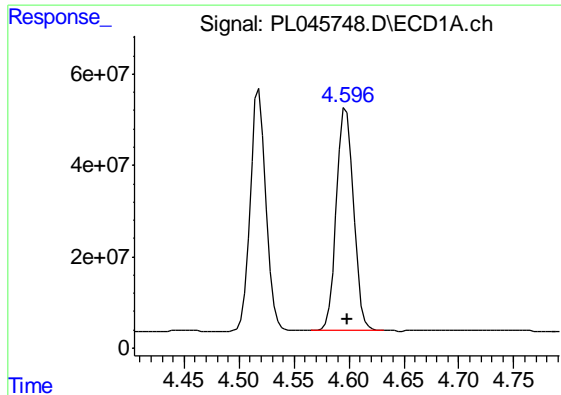
#3 gamma-BHC (Lindane)
 R.T.: 4.655 min
 Delta R.T.: 0.000 min
 Response: 150891635
 Conc: 53.42 ng/ml



#4 Heptachlor
 R.T.: 4.357 min
 Delta R.T.: -0.001 min
 Response: 559396757
 Conc: 53.01 ng/ml



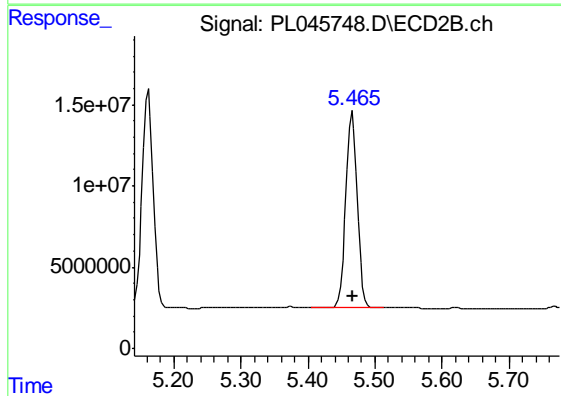
#4 Heptachlor
 R.T.: 5.162 min
 Delta R.T.: -0.001 min
 Response: 155798180
 Conc: 52.37 ng/ml



#5 Aldrin

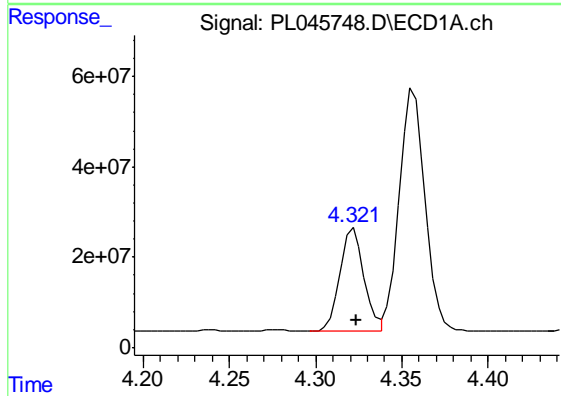
R.T.: 4.598 min
 Delta R.T.: -0.002 min
 Response: 527816679
 Conc: 54.27 ng/ml

Instrument :
 ECD_L
 ClientSampleId :
 PSTDCCC050



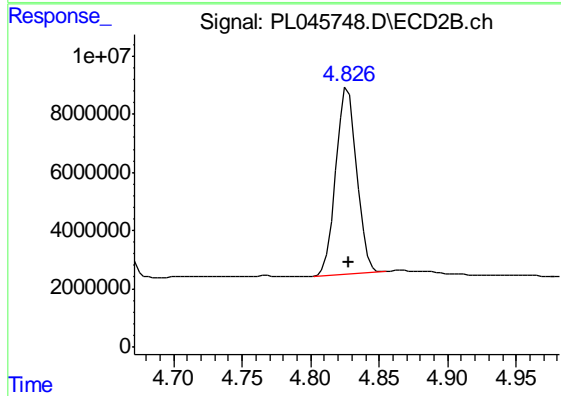
#5 Aldrin

R.T.: 5.466 min
 Delta R.T.: -0.001 min
 Response: 143609313
 Conc: 53.17 ng/ml



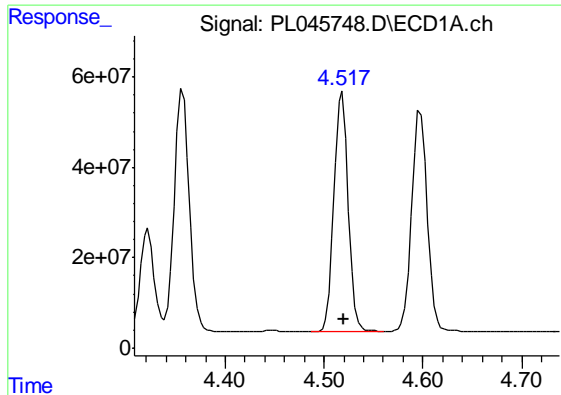
#6 beta-BHC

R.T.: 4.322 min
 Delta R.T.: -0.002 min
 Response: 224555809
 Conc: 52.39 ng/ml



#6 beta-BHC

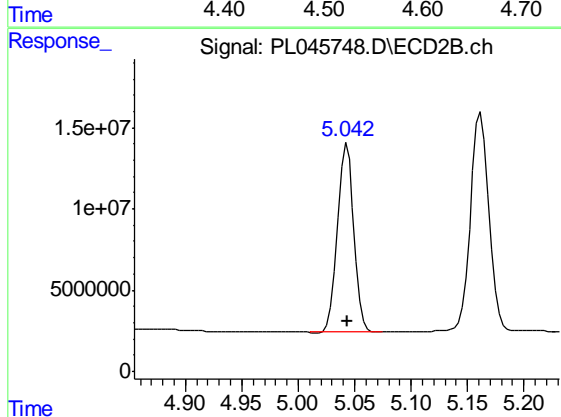
R.T.: 4.827 min
 Delta R.T.: 0.000 min
 Response: 68172154
 Conc: 53.68 ng/ml



#7 delta-BHC

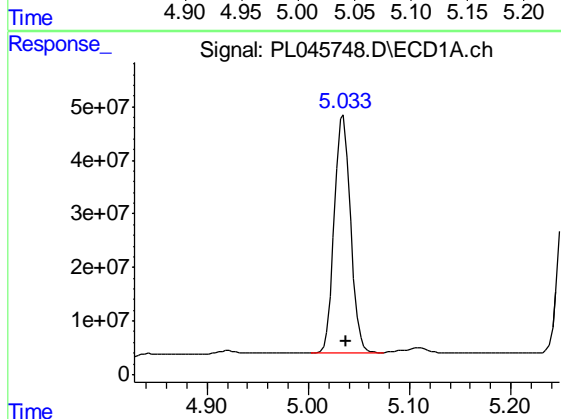
R.T.: 4.518 min
Delta R.T.: -0.002 min
Response: 530696630
Conc: 55.52 ng/ml

Instrument :
ECD_L
ClientSampleId :
PSTDCCC050



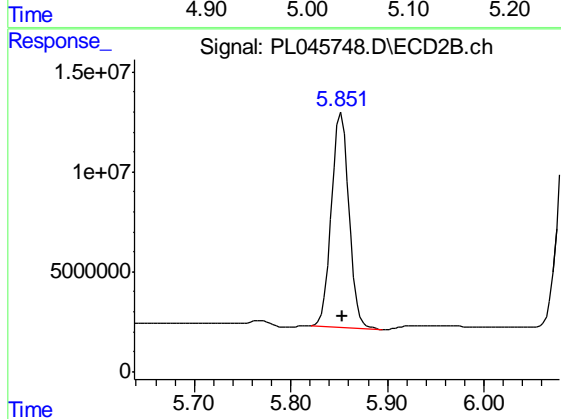
#7 delta-BHC

R.T.: 5.043 min
Delta R.T.: 0.000 min
Response: 120007537
Conc: 55.79 ng/ml



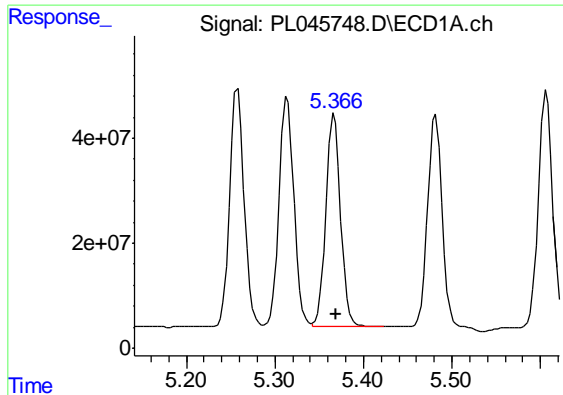
#8 Heptachlor epoxide

R.T.: 5.035 min
Delta R.T.: -0.002 min
Response: 493803136
Conc: 52.91 ng/ml



#8 Heptachlor epoxide

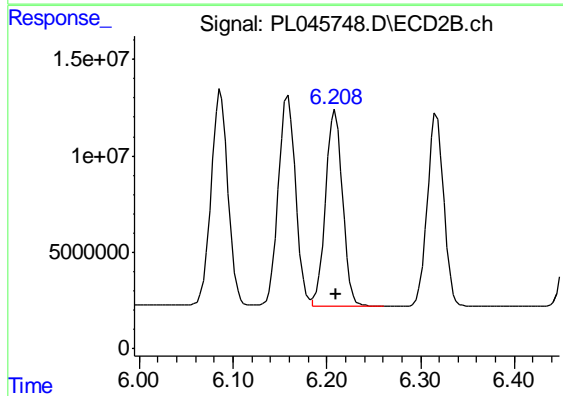
R.T.: 5.852 min
Delta R.T.: -0.001 min
Response: 132649633
Conc: 55.23 ng/ml



#9 Endosulfan I

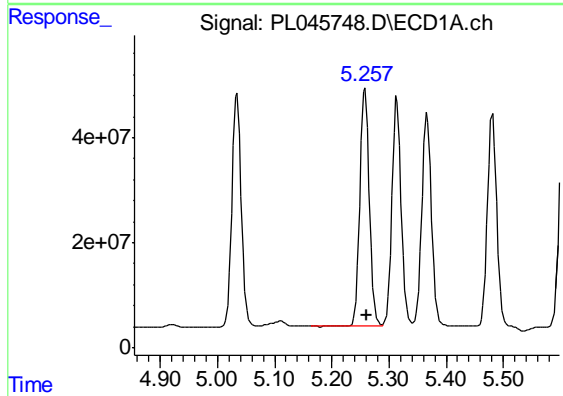
R.T.: 5.367 min
Delta R.T.: -0.002 min
Response: 470138554
Conc: 52.60 ng/ml

Instrument :
ECD_L
ClientSampleId :
PSTDCCC050



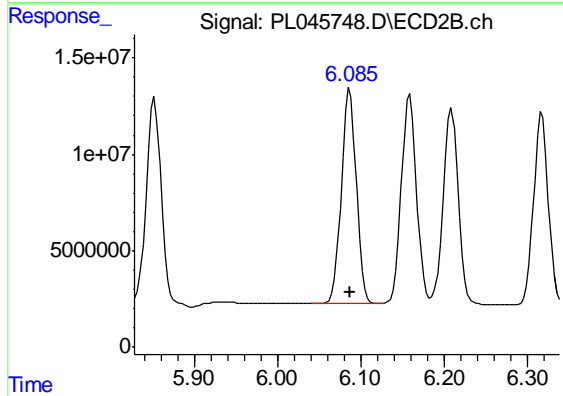
#9 Endosulfan I

R.T.: 6.209 min
Delta R.T.: 0.000 min
Response: 128070240
Conc: 51.43 ng/ml



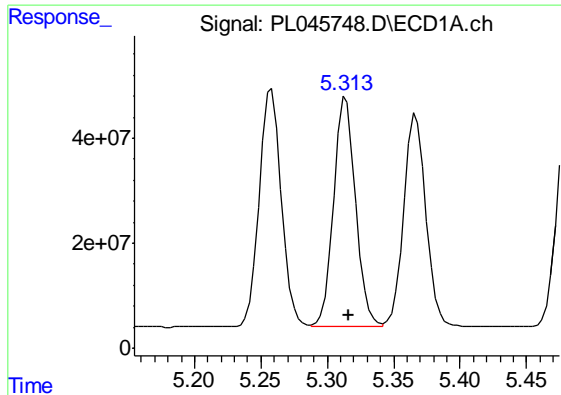
#10 gamma-Chlordane

R.T.: 5.258 min
Delta R.T.: -0.002 min
Response: 517824956
Conc: 52.91 ng/ml



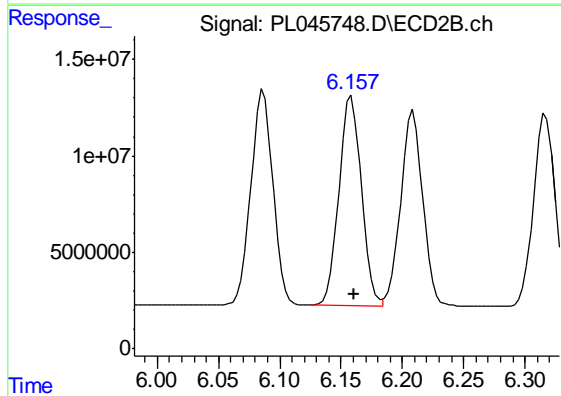
#10 gamma-Chlordane

R.T.: 6.087 min
Delta R.T.: 0.000 min
Response: 139966140
Conc: 52.17 ng/ml

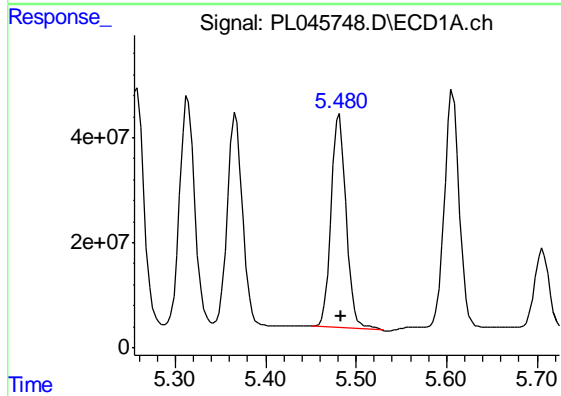


#11 alpha-Chlordane
R.T.: 5.314 min
Delta R.T.: -0.002 min
Response: 508069222
Conc: 52.39 ng/ml

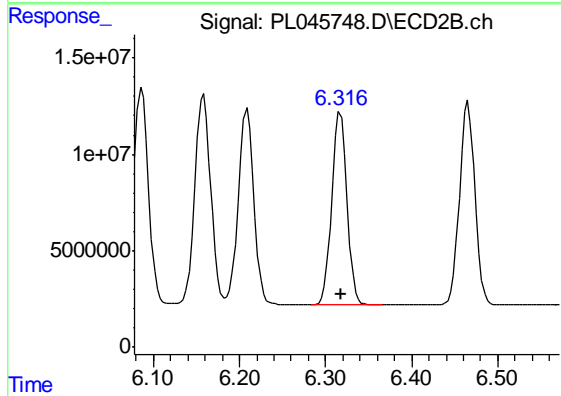
Instrument :
ECD_L
ClientSampleId :
PSTDCCC050



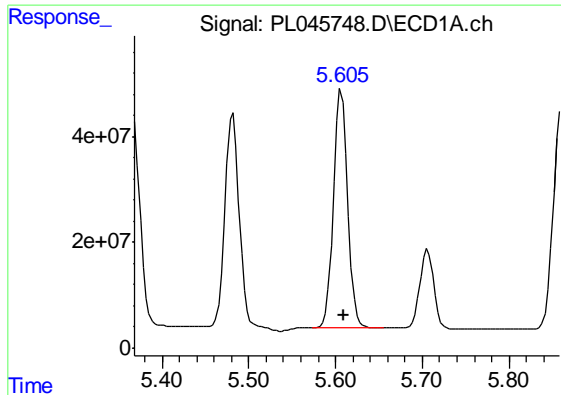
#11 alpha-Chlordane
R.T.: 6.159 min
Delta R.T.: -0.001 min
Response: 138877426
Conc: 51.48 ng/ml



#12 4,4'-DDE
R.T.: 5.482 min
Delta R.T.: -0.002 min
Response: 470705576
Conc: 53.62 ng/ml



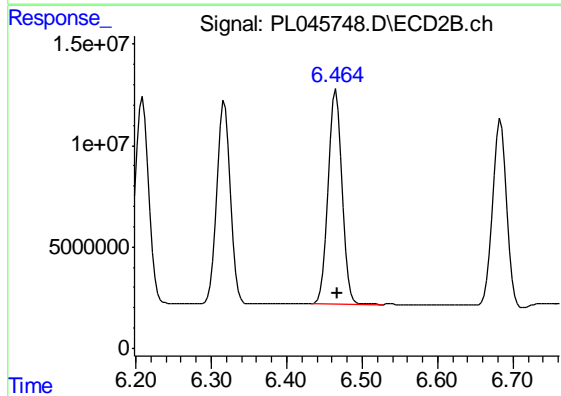
#12 4,4'-DDE
R.T.: 6.317 min
Delta R.T.: 0.000 min
Response: 122675613
Conc: 52.52 ng/ml



#13 Dieldrin

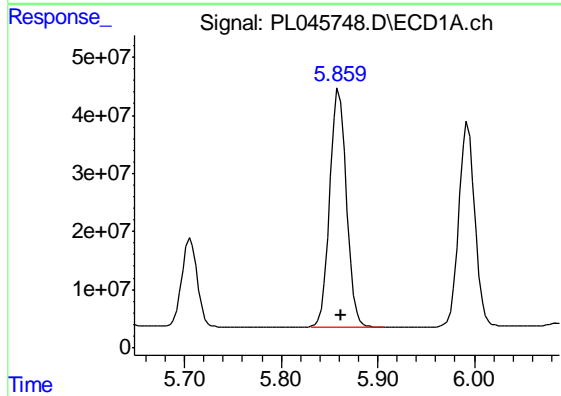
R.T.: 5.607 min
Delta R.T.: -0.002 min
Response: 512965076
Conc: 53.67 ng/ml

Instrument :
ECD_L
ClientSampleId :
PSTDCCC050



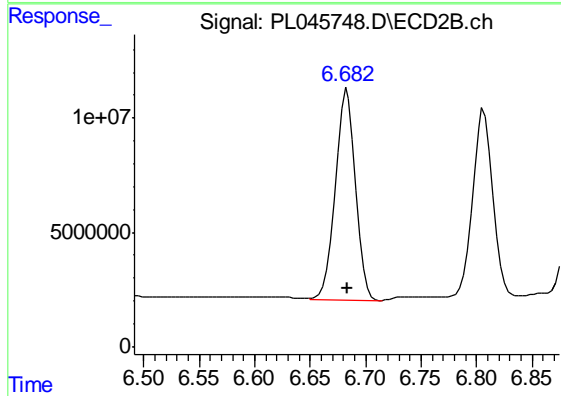
#13 Dieldrin

R.T.: 6.466 min
Delta R.T.: -0.001 min
Response: 132907544
Conc: 51.72 ng/ml



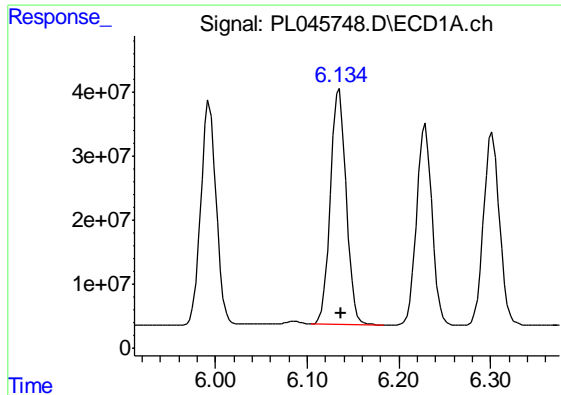
#14 Endrin

R.T.: 5.860 min
Delta R.T.: -0.002 min
Response: 479609757
Conc: 53.26 ng/ml



#14 Endrin

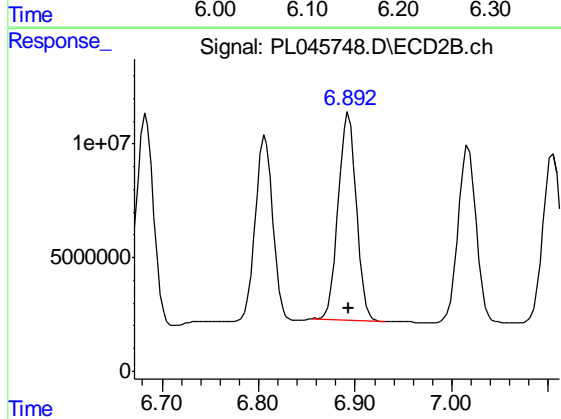
R.T.: 6.683 min
Delta R.T.: 0.000 min
Response: 117856291
Conc: 51.80 ng/ml



#15 Endosulfan II

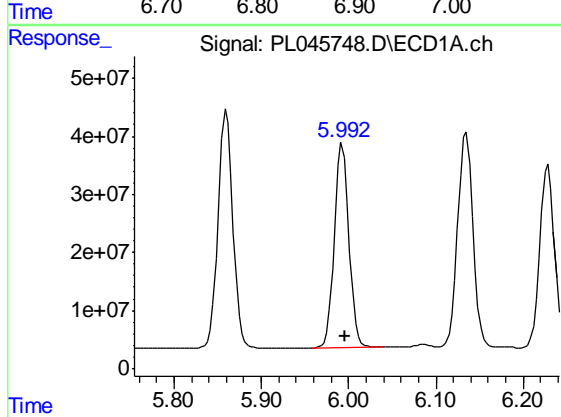
R.T.: 6.135 min
 Delta R.T.: -0.002 min
 Response: 447732081
 Conc: 51.65 ng/ml

Instrument :
 ECD_L
 ClientSampleId :
 PSTDCCC050



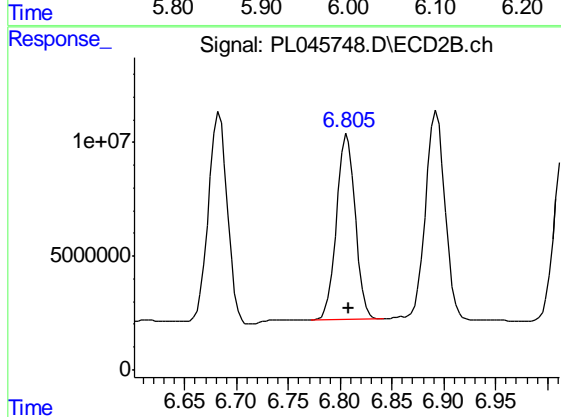
#15 Endosulfan II

R.T.: 6.893 min
 Delta R.T.: 0.000 min
 Response: 116544631
 Conc: 49.56 ng/ml



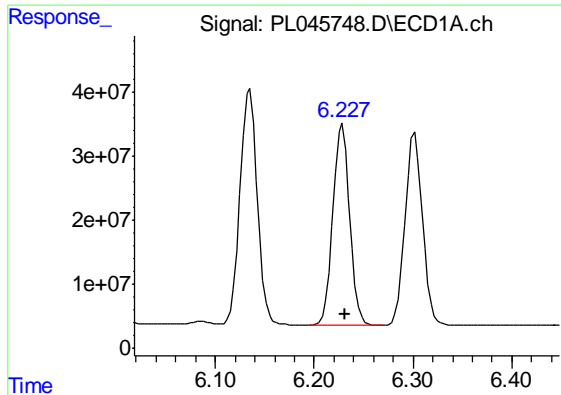
#16 4,4'-DDD

R.T.: 5.993 min
 Delta R.T.: -0.003 min
 Response: 405549728
 Conc: 55.39 ng/ml



#16 4,4'-DDD

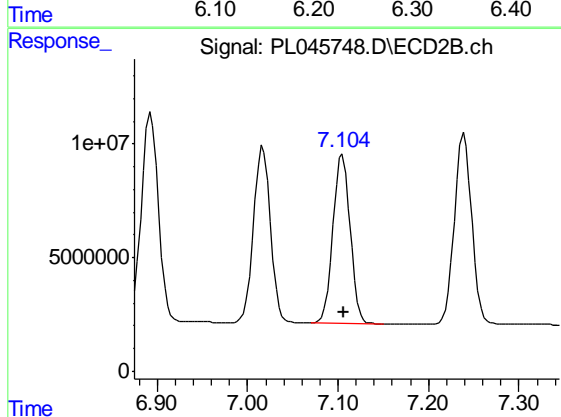
R.T.: 6.807 min
 Delta R.T.: 0.000 min
 Response: 103217542
 Conc: 53.67 ng/ml



#17 4,4'-DDT

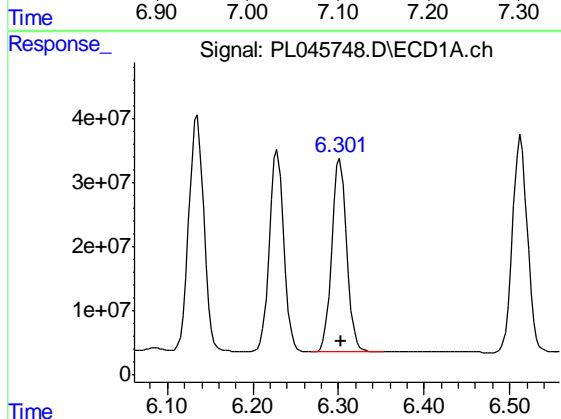
R.T.: 6.229 min
Delta R.T.: -0.002 min
Response: 370424344
Conc: 49.39 ng/ml

Instrument :
ECD_L
ClientSampleId :
PSTDCCC050



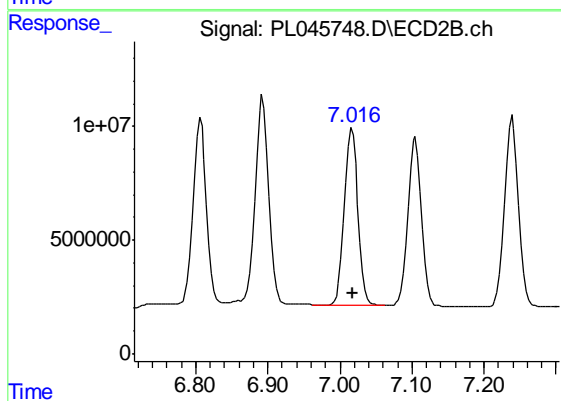
#17 4,4'-DDT

R.T.: 7.105 min
Delta R.T.: 0.000 min
Response: 97169165
Conc: 49.24 ng/ml



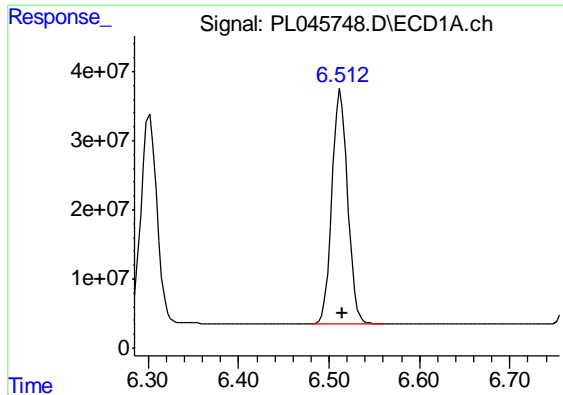
#18 Endrin aldehyde

R.T.: 6.302 min
Delta R.T.: -0.002 min
Response: 367701657
Conc: 50.30 ng/ml



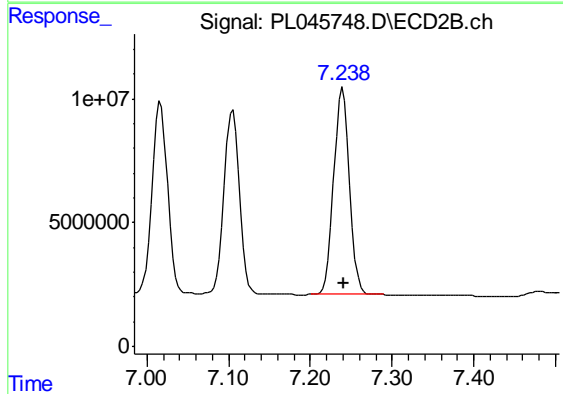
#18 Endrin aldehyde

R.T.: 7.017 min
Delta R.T.: 0.000 min
Response: 101432757
Conc: 49.62 ng/ml

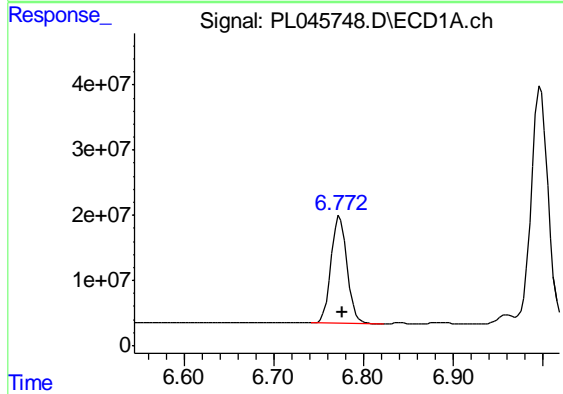


#19 Endosulfan Sulfate
 R.T.: 6.513 min
 Delta R.T.: -0.002 min
 Response: 407308540
 Conc: 50.11 ng/ml

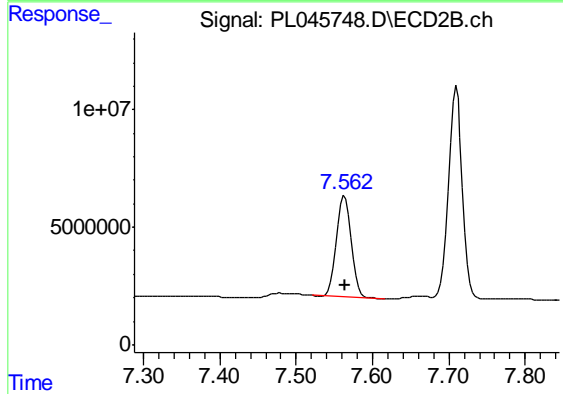
Instrument :
 ECD_L
 ClientSampleId :
 PSTDCCC050



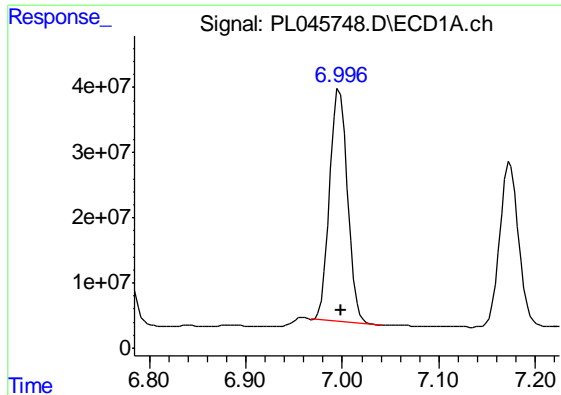
#19 Endosulfan Sulfate
 R.T.: 7.239 min
 Delta R.T.: -0.001 min
 Response: 112122749
 Conc: 49.84 ng/ml



#20 Methoxychlor
 R.T.: 6.774 min
 Delta R.T.: -0.003 min
 Response: 204264840
 Conc: 46.51 ng/ml



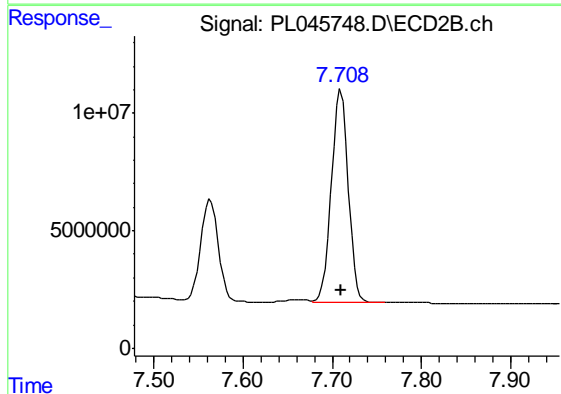
#20 Methoxychlor
 R.T.: 7.564 min
 Delta R.T.: 0.000 min
 Response: 57705089
 Conc: 47.01 ng/ml



#21 Endrin ketone

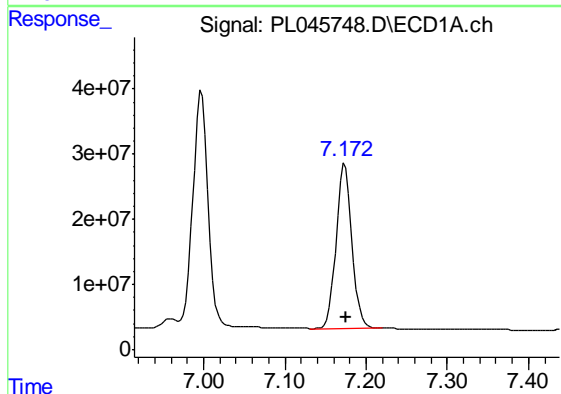
R.T.: 6.997 min
 Delta R.T.: -0.002 min
 Response: 449028691
 Conc: 48.74 ng/ml

Instrument :
 ECD_L
 ClientSampleId :
 PSTDCCC050



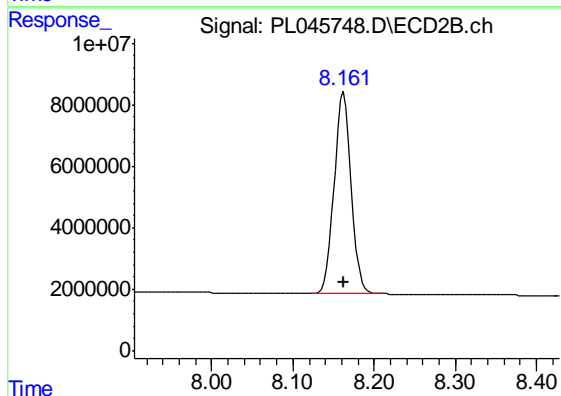
#21 Endrin ketone

R.T.: 7.710 min
 Delta R.T.: 0.000 min
 Response: 118445431
 Conc: 49.80 ng/ml



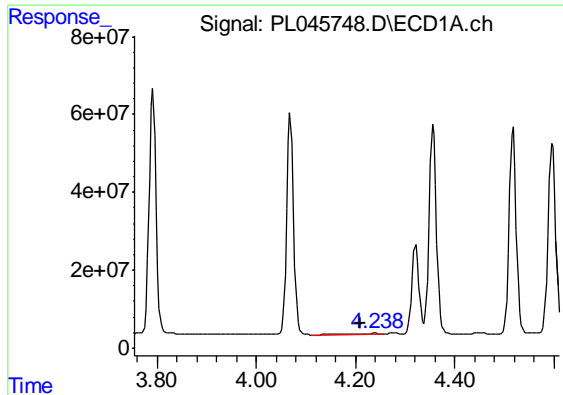
#22 Mirex

R.T.: 7.174 min
 Delta R.T.: -0.002 min
 Response: 344494894
 Conc: 46.30 ng/ml



#22 Mirex

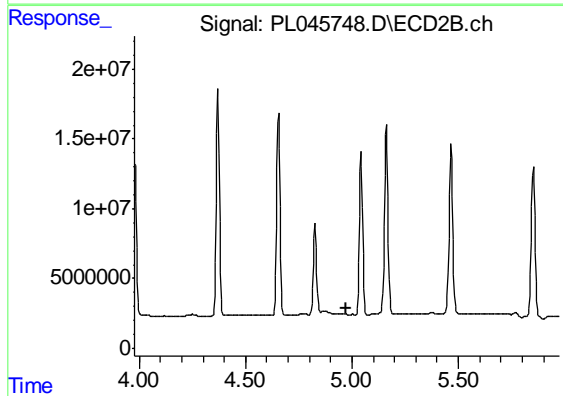
R.T.: 8.162 min
 Delta R.T.: 0.000 min
 Response: 95604889
 Conc: 48.00 ng/ml



#23 Chlordane-1

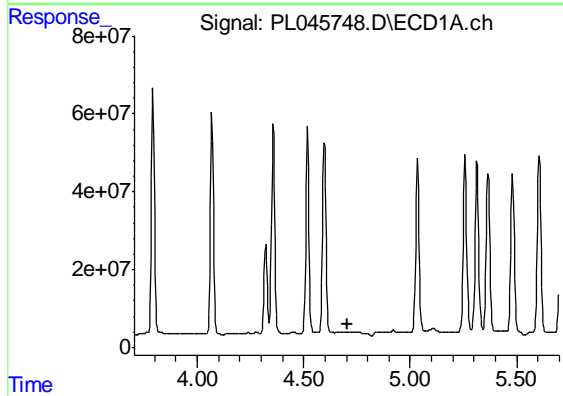
R.T.: 4.239 min
 Delta R.T.: 0.028 min
 Response: 6621905
 Conc: 19.65 ng/ml

Instrument :
 ECD_L
 ClientSampled :
 PSTDCCC050



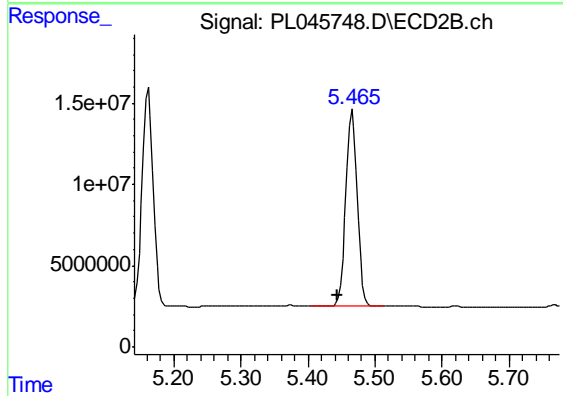
#23 Chlordane-1

R.T.: 0.000 min
 Exp R.T. : 4.975 min
 Response: 0
 Conc: N.D.



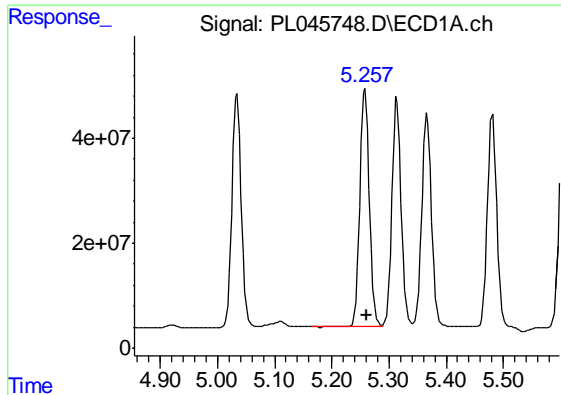
#24 Chlordane-2

R.T.: 0.000 min
 Exp R.T. : 4.704 min
 Response: 0
 Conc: N.D.



#24 Chlordane-2

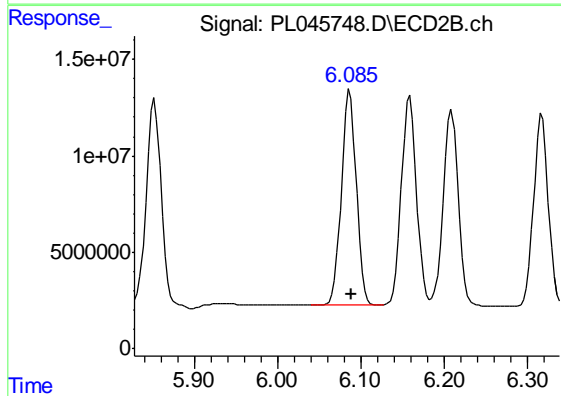
R.T.: 5.466 min
 Delta R.T.: 0.023 min
 Response: 143609313
 Conc: 1188.52 ng/ml



#25 Chlordane-3

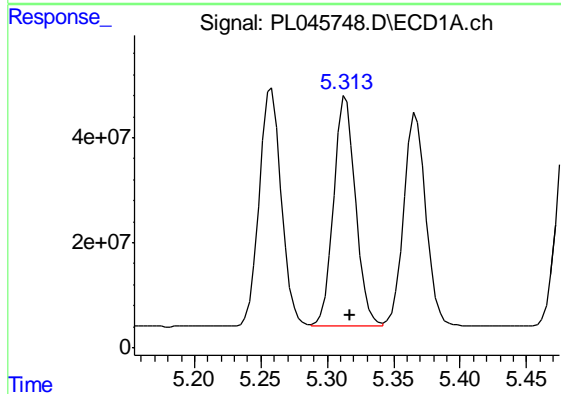
R.T.: 5.258 min
 Delta R.T.: -0.004 min
 Response: 517824956
 Conc: 451.45 ng/ml

Instrument :
 ECD_L
 ClientSampleId :
 PSTDCCC050



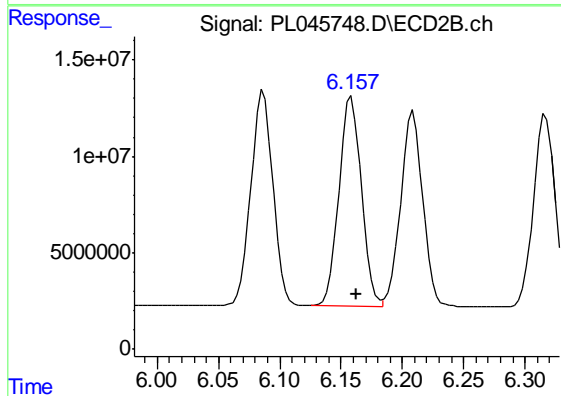
#25 Chlordane-3

R.T.: 6.087 min
 Delta R.T.: -0.002 min
 Response: 139966140
 Conc: 359.23 ng/ml



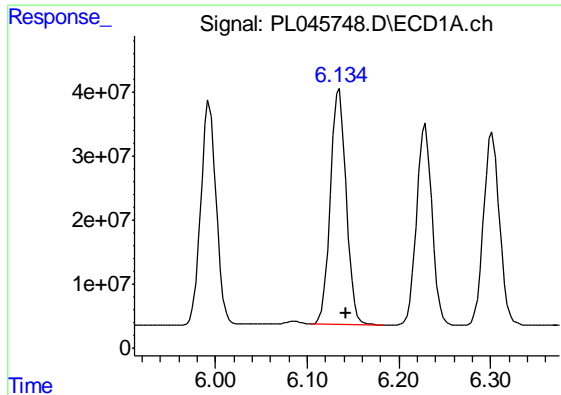
#26 Chlordane-4

R.T.: 5.314 min
 Delta R.T.: -0.003 min
 Response: 508069222
 Conc: 479.29 ng/ml



#26 Chlordane-4

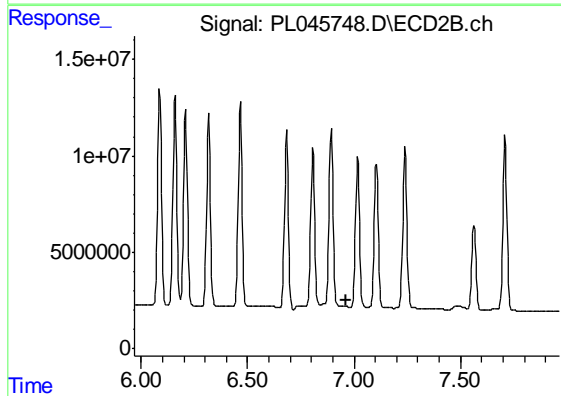
R.T.: 6.159 min
 Delta R.T.: -0.004 min
 Response: 138877426
 Conc: 296.86 ng/ml



#27 Chlordane-5

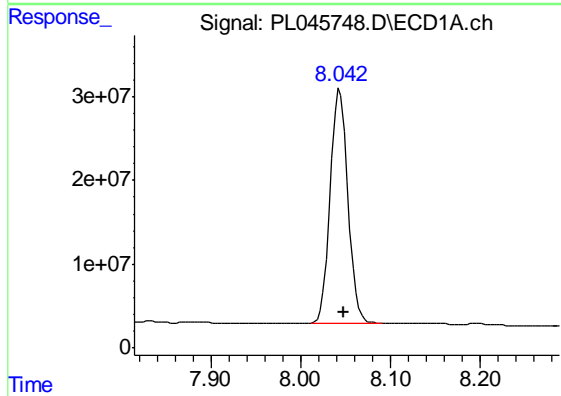
R.T.: 6.135 min
 Delta R.T.: -0.008 min
 Response: 447732081
 Conc: 1296.47 ng/ml

Instrument :
 ECD_L
 ClientSampleId :
 PSTDCCC050



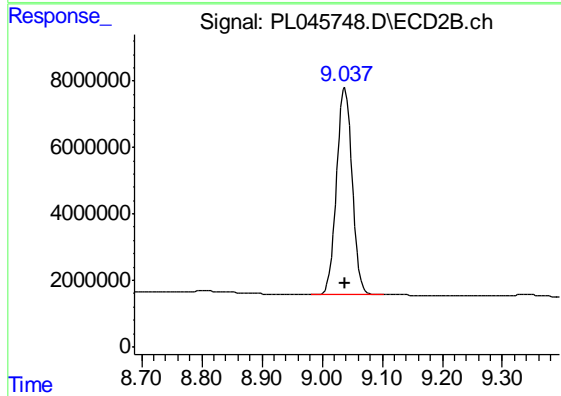
#27 Chlordane-5

R.T.: 0.000 min
 Exp R.T. : 6.966 min
 Response: 0
 Conc: N.D.



#28 Decachlorobiphenyl

R.T.: 8.044 min
 Delta R.T.: -0.004 min
 Response: 385720183
 Conc: 46.10 ng/ml



#28 Decachlorobiphenyl

R.T.: 9.038 min
 Delta R.T.: 0.000 min
 Response: 112668085
 Conc: 49.31 ng/ml