

Data Path : Z:\pestpcbsrv\HPCHEM1\ECD\_L\Data\PL031220\  
 Data File : PL057305.D  
 Signal(s) : Signal #1: ECD1A.ch Signal #2: ECD2B.ch  
 Acq On : 12 Mar 2020 18:38  
 Operator : AJ\MA  
 Sample : L1852-25  
 Misc :  
 ALS Vial : 28 Sample Multiplier: 1

Instrument :  
 ECD\_L  
 ClientSampleId :  
 TP-2

Integration File signal 1: autoint1.e  
 Integration File signal 2: autoint2.e  
 Quant Time: Mar 13 06:04:35 2020  
 Quant Method : Z:\pestpcbsrv\HPCHEM1\ECD\_L\methods\PL030320.M  
 Quant Title : GC Extractables  
 QLast Update : Wed Mar 11 17:44:01 2020  
 Response via : Initial Calibration  
 Integrator: ChemStation

Volume Inj. : 1 µl  
 Signal #1 Phase : ZB-MR2 Signal #2 Phase: ZB-MR1  
 Signal #1 Info : 30M x 0.32mm x0.2 Signal #2 Info : 30M x 0.32mm x0.5µm

Compound	RT#1	RT#2	Resp#1	Resp#2	ng/ml	ng/ml
-----						
System Monitoring Compounds						
1) SA Tetrachlo...	3.459	3.957	167.1E6	41377985	19.612	19.394
28) SA Decachlor...	8.206	8.979	134.5E6	29675801	13.920	13.967
Target Compounds						
2) A alpha-BHC	3.912	4.362f	1510702	795274	0.102	0.252 #
3) MA gamma-BHC...	4.184	4.629	16203927	-31564	1.179	N.D. #
4) MA Heptachlor	4.510f	5.138	634628	18099908	0.047	5.815 #
5) MB Aldrin	4.731	5.440	2299778	7192460	0.178	2.406 #
8) B Heptachlo...	5.176	5.795f	6296718	9604746	0.520	3.466 #
9) A Endosulfan I	0.000	6.181	0	712163	N.D.	0.255 #
10) B gamma-Chl...	5.397	6.032f	1073547	352421	0.086	0.118 #
11) B alpha-Chl...	5.447	6.145f	23418088	256763	1.906	0.085 #
12) B 4,4'-DDE	5.642f	6.275	1464055	242889	0.125	0.086 #
13) MA Dieldrin	5.758	0.000	1159455	0	0.095	N.D. #
14) MA Endrin	6.009	6.668f	9528148	332316	0.876	0.129 #
15) B Endosulfa...	6.292	6.869	12540180	1945168	1.161	0.693 #
16) A 4,4'-DDD	6.159f	0.000	10703806	0	1.106	N.D. #
17) MA 4,4'-DDT	6.382	0.000	5049690	0	0.516	N.D. #
18) B Endrin al...	6.447	6.970	3428173	1009441	0.383	0.436
21) B Endrin ke...	7.149	7.665	1885781	528037	0.167	0.193
22) Mirex	7.345	8.098f	1779649	605740	0.220	0.316 #
23) Chlordane-1	4.312f	4.924f	2876701	3109038	9.464	38.763 #
24) Chlordane-2	4.810f	0.000	2717483	0	7.706	N.D. #
25) Chlordane-3	5.397	6.032f	1073547	352421	0.995	0.930
26) Chlordane-4	5.447	6.145f	23418088	256763	25.482	0.560 #
27) Chlordane-5	6.292	0.000	12540180	0	34.525	N.D. #
-----						

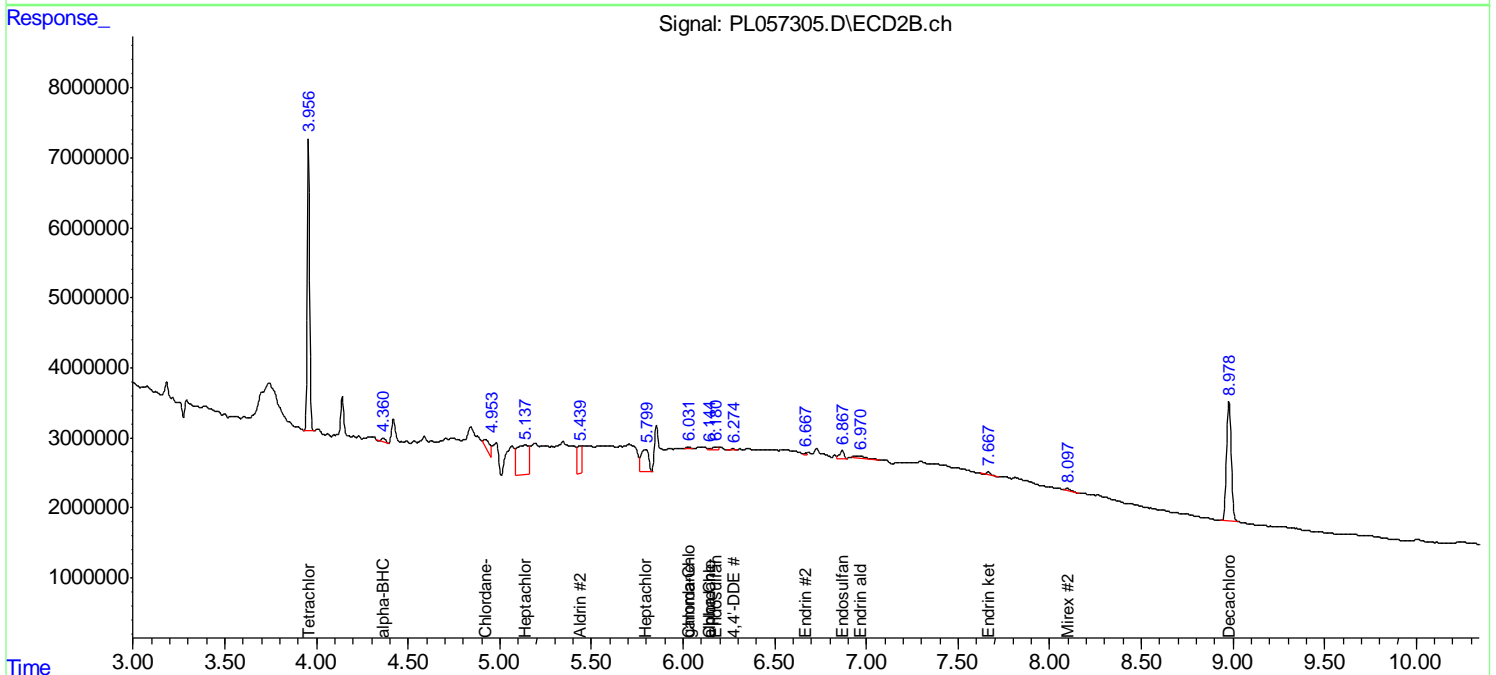
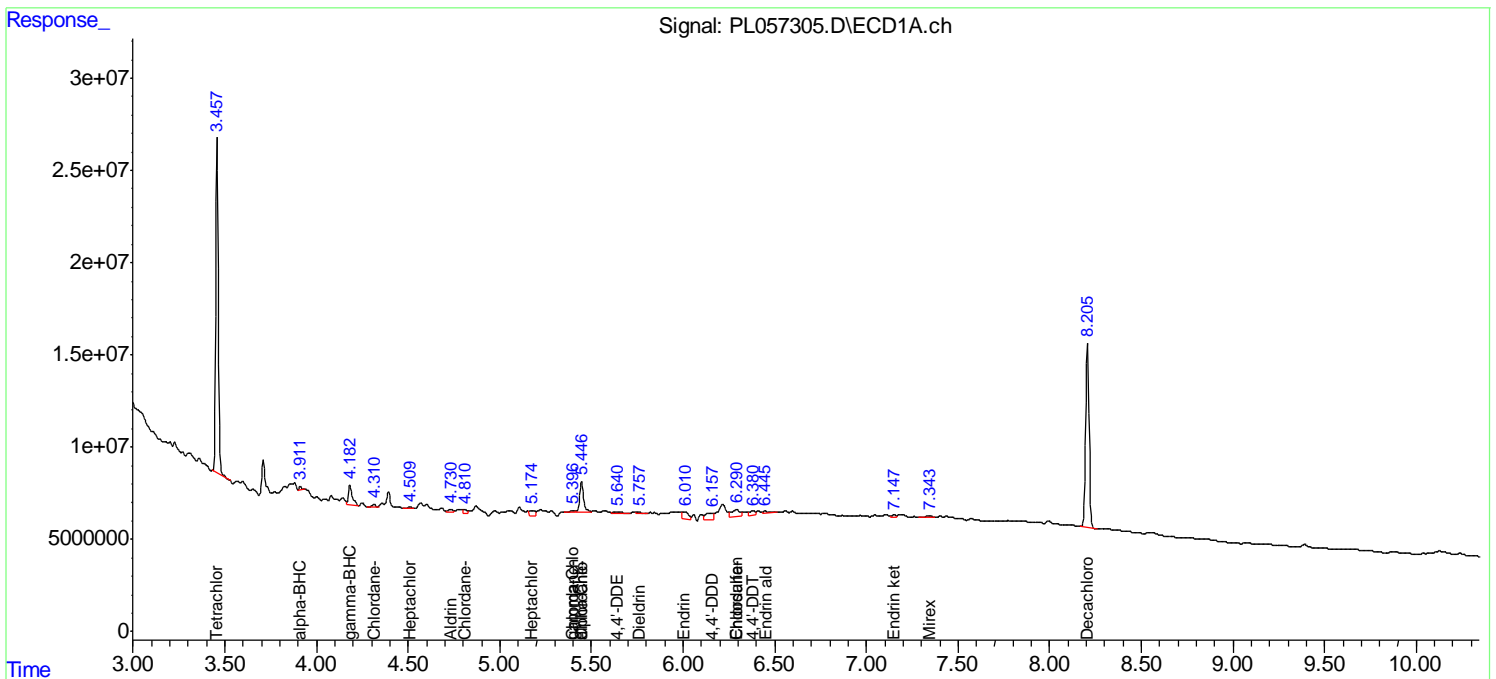
(f)=RT Delta > 1/2 Window (#)=Amounts differ by > 25% (m)=manual int.

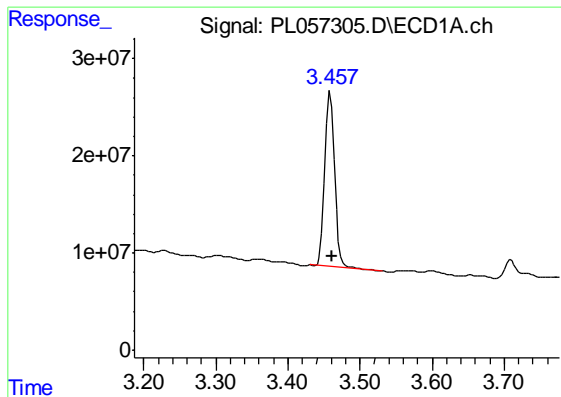
Data Path : Z:\pestpcbsrv\HPCHEM1\ECD\_L\Data\PL031220\  
 Data File : PL057305.D  
 Signal(s) : Signal #1: ECD1A.ch Signal #2: ECD2B.ch  
 Acq On : 12 Mar 2020 18:38  
 Operator : AJ\MA  
 Sample : L1852-25  
 Misc :  
 ALS Vial : 28 Sample Multiplier: 1

Instrument :  
 ECD\_L  
 Client Sampled :  
 TP-2

Integration File signal 1: autoint1.e  
 Integration File signal 2: autoint2.e  
 Quant Time: Mar 13 06:04:35 2020  
 Quant Method : Z:\pestpcbsrv\HPCHEM1\ECD\_L\methods\PL030320.M  
 Quant Title : GC Extractables  
 QLast Update : Wed Mar 11 17:44:01 2020  
 Response via : Initial Calibration  
 Integrator: ChemStation

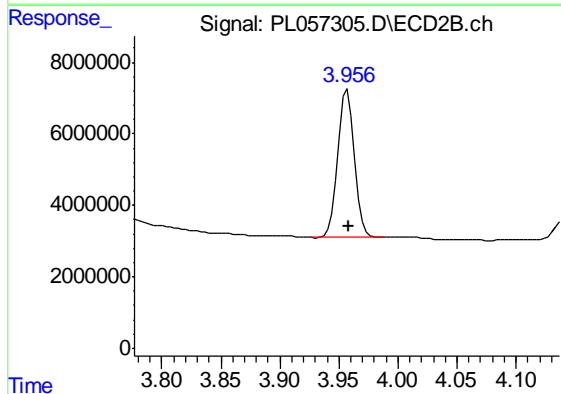
Volume Inj. : 1 µl  
 Signal #1 Phase : ZB-MR2 Signal #2 Phase: ZB-MR1  
 Signal #1 Info : 30M x 0.32mm x0.2 Signal #2 Info : 30M x 0.32mm x0.5µm



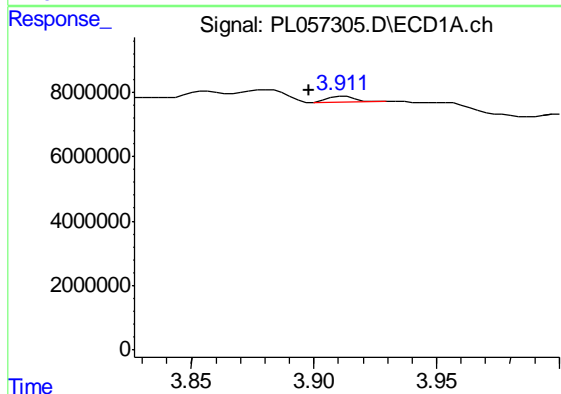


#1 Tetrachloro-m-xylene  
 R.T.: 3.459 min  
 Delta R.T.: -0.002 min  
 Response: 167137949  
 Conc: 19.61 ng/ml

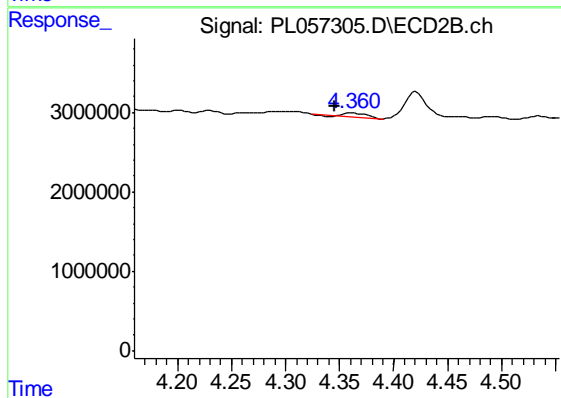
Instrument :  
 ECD\_L  
 ClientSampled :  
 TP-2



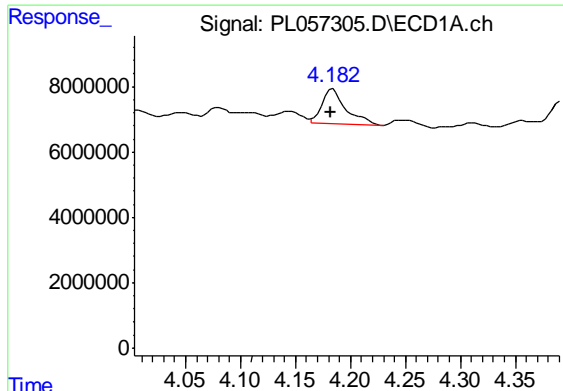
#1 Tetrachloro-m-xylene  
 R.T.: 3.957 min  
 Delta R.T.: 0.000 min  
 Response: 41377985  
 Conc: 19.39 ng/ml



#2 alpha-BHC  
 R.T.: 3.912 min  
 Delta R.T.: 0.014 min  
 Response: 1510702  
 Conc: 0.10 ng/ml

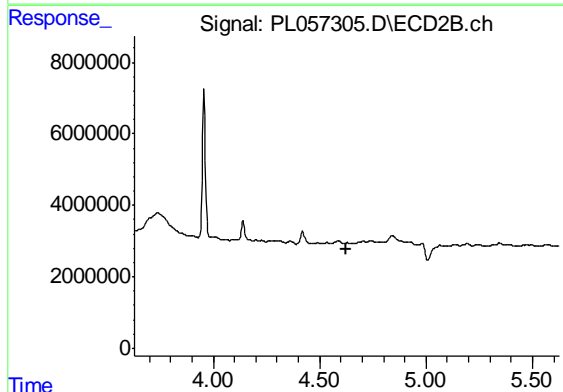


#2 alpha-BHC  
 R.T.: 4.362 min  
 Delta R.T.: 0.017 min  
 Response: 795274  
 Conc: 0.25 ng/ml

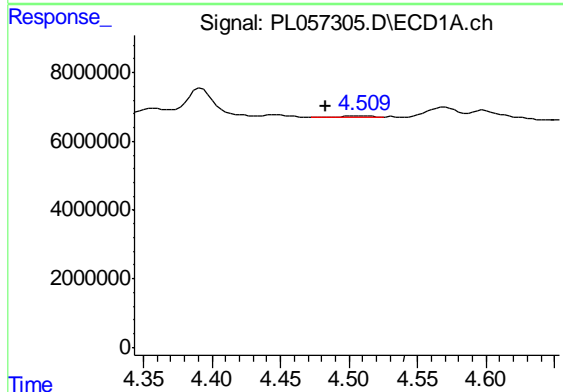


#3 gamma-BHC (Lindane)  
 R.T.: 4.184 min  
 Delta R.T.: 0.002 min  
 Response: 16203927  
 Conc: 1.18 ng/ml

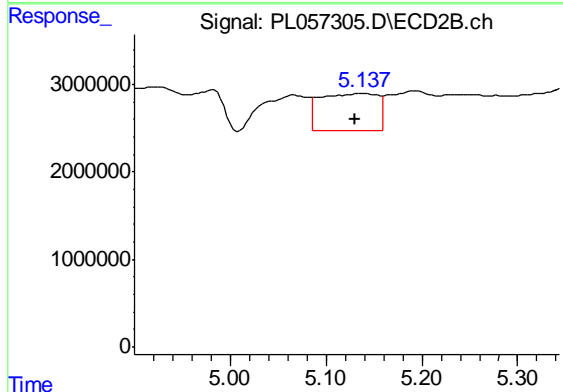
Instrument :  
 ECD\_L  
 ClientSampled :  
 TP-2



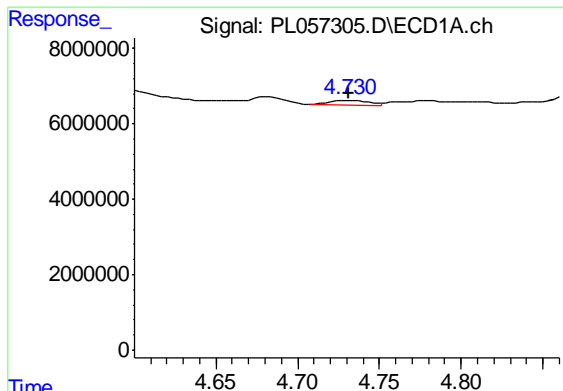
#3 gamma-BHC (Lindane)  
 R.T.: 4.629 min  
 Delta R.T.: 0.002 min  
 Response: -31564  
 Conc: N.D.



#4 Heptachlor  
 R.T.: 4.510 min  
 Delta R.T.: 0.027 min  
 Response: 634628  
 Conc: 0.05 ng/ml

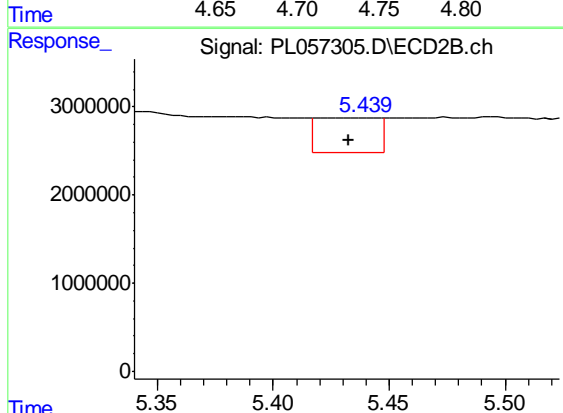


#4 Heptachlor  
 R.T.: 5.138 min  
 Delta R.T.: 0.008 min  
 Response: 18099908  
 Conc: 5.82 ng/ml

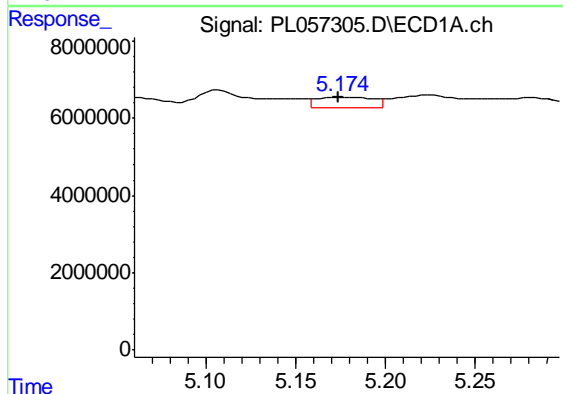


#5 Aldrin  
 R.T.: 4.731 min  
 Delta R.T.: 0.000 min  
 Response: 2299778  
 Conc: 0.18 ng/ml

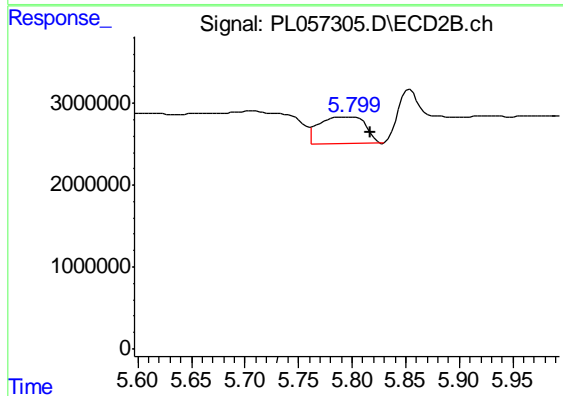
Instrument :  
 ECD\_L  
 ClientSampled :  
 TP-2



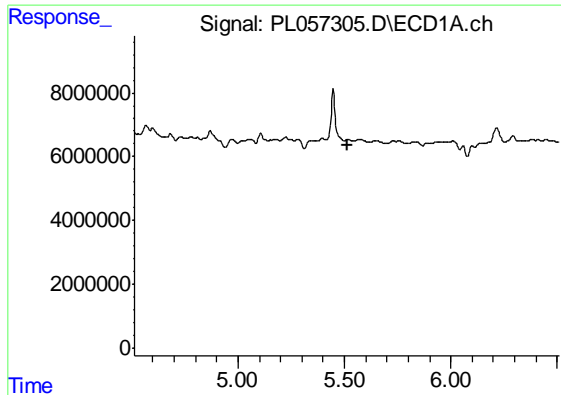
#5 Aldrin  
 R.T.: 5.440 min  
 Delta R.T.: 0.008 min  
 Response: 7192460  
 Conc: 2.41 ng/ml



#8 Heptachlor epoxide  
 R.T.: 5.176 min  
 Delta R.T.: 0.002 min  
 Response: 6296718  
 Conc: 0.52 ng/ml

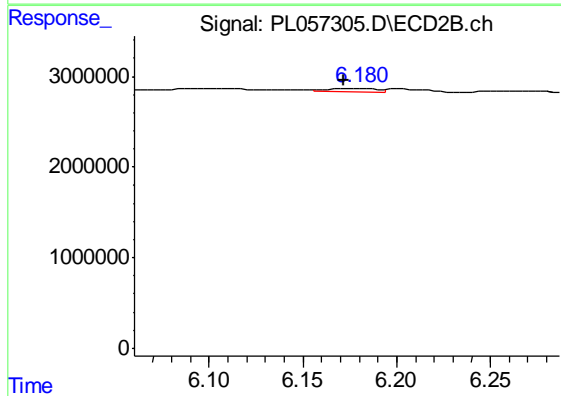


#8 Heptachlor epoxide  
 R.T.: 5.795 min  
 Delta R.T.: -0.022 min  
 Response: 9604746  
 Conc: 3.47 ng/ml

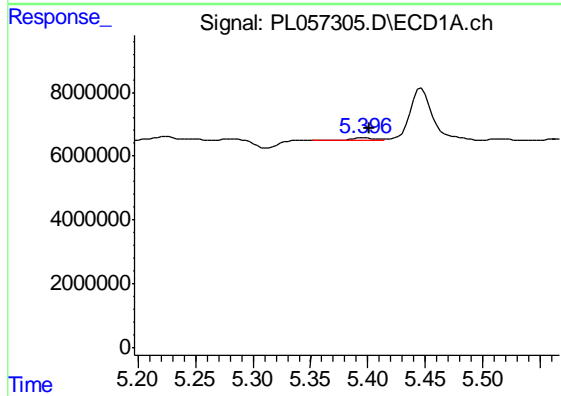


#9 Endosulfan I  
 R.T.: 0.000 min  
 Exp R.T. : 5.513 min  
 Response: 0  
 Conc: N.D.

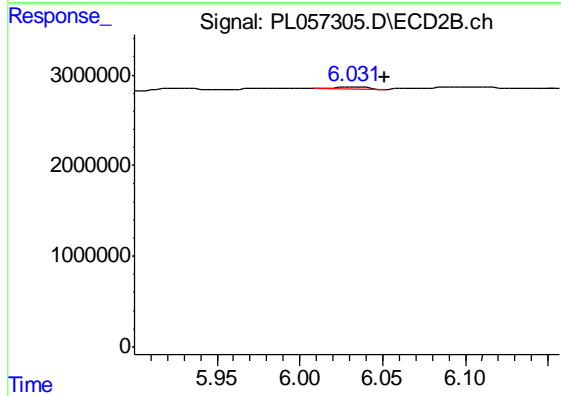
Instrument :  
 ECD\_L  
 ClientSampled :  
 TP-2



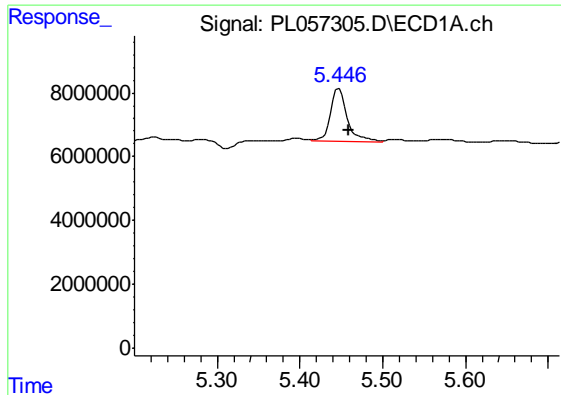
#9 Endosulfan I  
 R.T.: 6.181 min  
 Delta R.T.: 0.009 min  
 Response: 712163  
 Conc: 0.25 ng/ml



#10 gamma-Chlordane  
 R.T.: 5.397 min  
 Delta R.T.: -0.004 min  
 Response: 1073547  
 Conc: 0.09 ng/ml

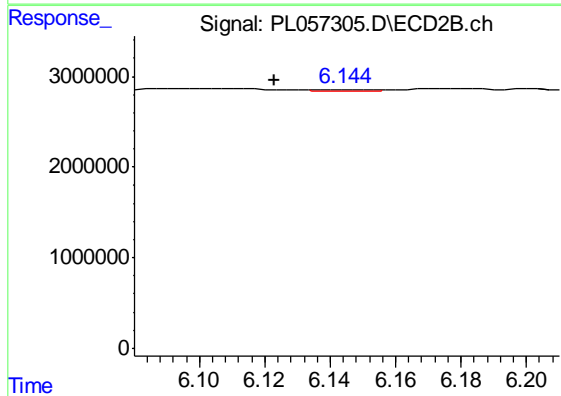


#10 gamma-Chlordane  
 R.T.: 6.032 min  
 Delta R.T.: -0.018 min  
 Response: 352421  
 Conc: 0.12 ng/ml

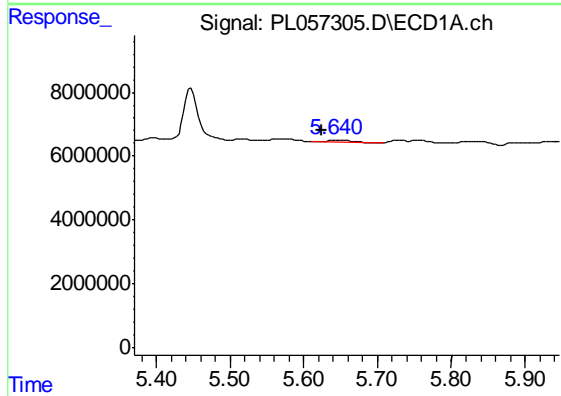


#11 alpha-Chlordane  
 R.T.: 5.447 min  
 Delta R.T.: -0.012 min  
 Response: 23418088  
 Conc: 1.91 ng/ml

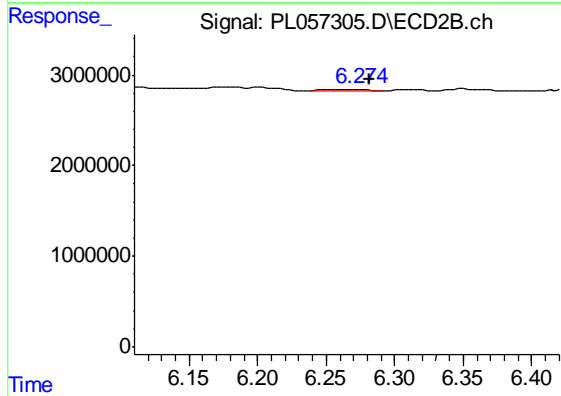
Instrument :  
 ECD\_L  
 ClientSampled :  
 TP-2



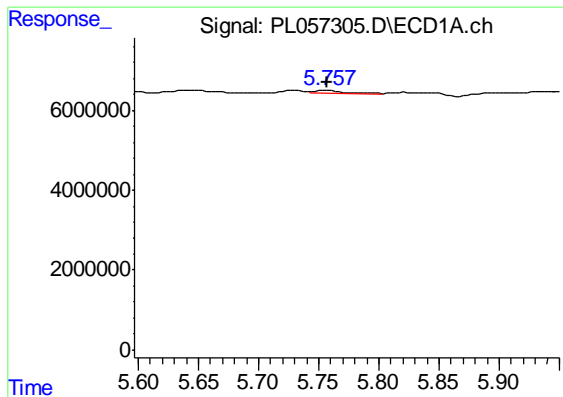
#11 alpha-Chlordane  
 R.T.: 6.145 min  
 Delta R.T.: 0.022 min  
 Response: 256763  
 Conc: 0.09 ng/ml



#12 4,4'-DDE  
 R.T.: 5.642 min  
 Delta R.T.: 0.018 min  
 Response: 1464055  
 Conc: 0.12 ng/ml



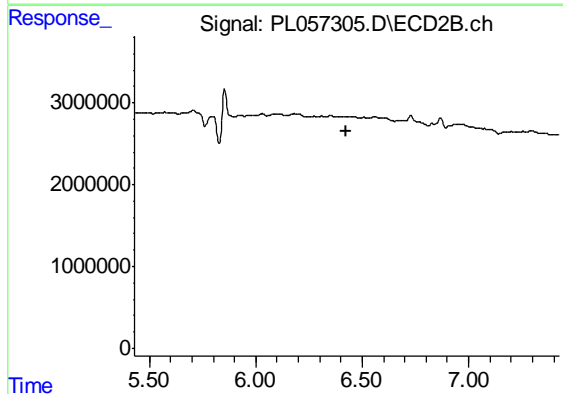
#12 4,4'-DDE  
 R.T.: 6.275 min  
 Delta R.T.: -0.006 min  
 Response: 242889  
 Conc: 0.09 ng/ml



#13 Dieldrin

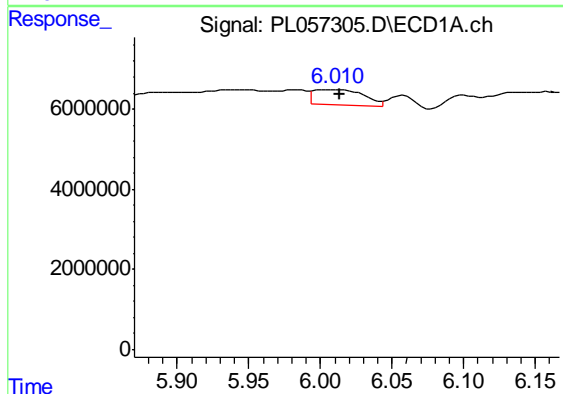
R.T.: 5.758 min  
 Delta R.T.: 0.001 min  
 Response: 1159455  
 Conc: 0.09 ng/ml

Instrument :  
 ECD\_L  
 ClientSampled :  
 TP-2



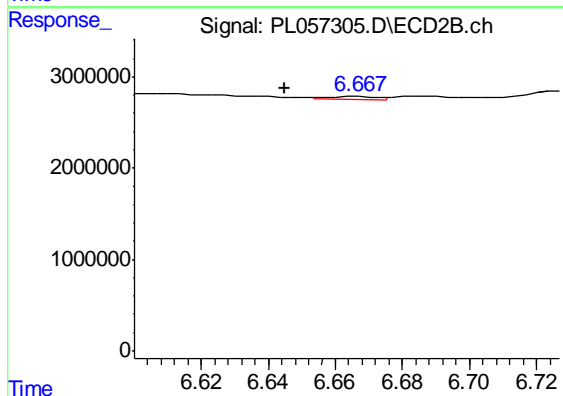
#13 Dieldrin

R.T.: 0.000 min  
 Exp R.T. : 6.428 min  
 Response: 0  
 Conc: N.D.



#14 Endrin

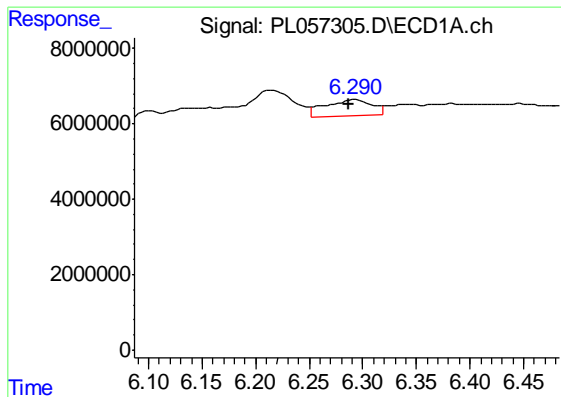
R.T.: 6.009 min  
 Delta R.T.: -0.004 min  
 Response: 9528148  
 Conc: 0.88 ng/ml



#14 Endrin

R.T.: 6.668 min  
 Delta R.T.: 0.023 min  
 Response: 332316  
 Conc: 0.13 ng/ml

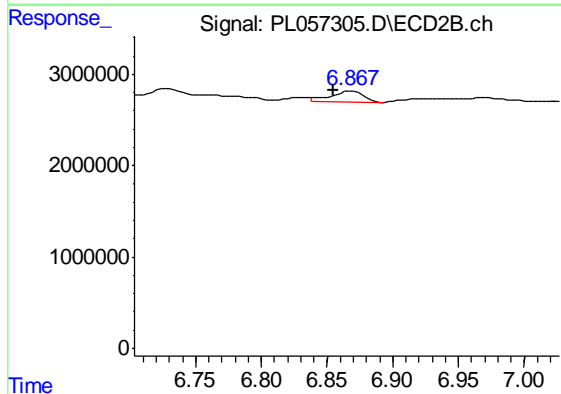




#15 Endosulfan II

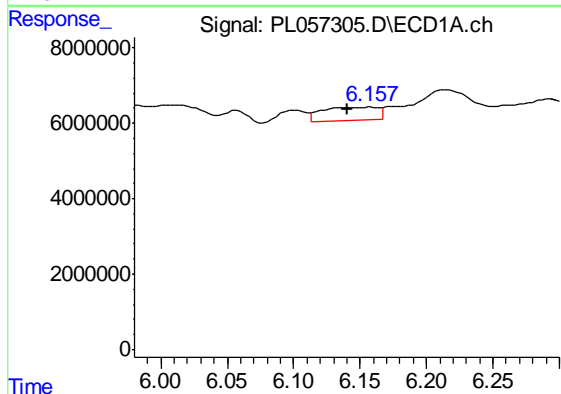
R.T.: 6.292 min  
 Delta R.T.: 0.005 min  
 Response: 12540180  
 Conc: 1.16 ng/ml

Instrument :  
 ECD\_L  
 ClientSampleId :  
 TP-2



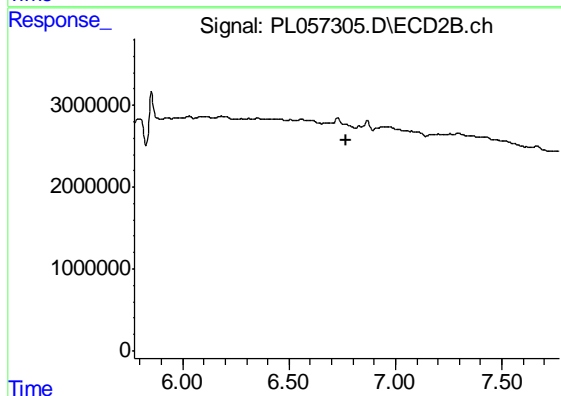
#15 Endosulfan II

R.T.: 6.869 min  
 Delta R.T.: 0.014 min  
 Response: 1945168  
 Conc: 0.69 ng/ml



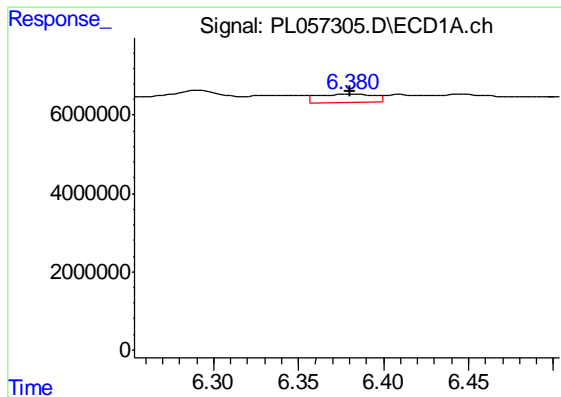
#16 4,4'-DDD

R.T.: 6.159 min  
 Delta R.T.: 0.018 min  
 Response: 10703806  
 Conc: 1.11 ng/ml



#16 4,4'-DDD

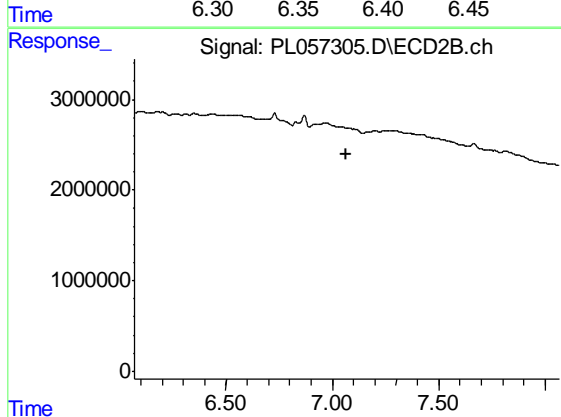
R.T.: 0.000 min  
 Exp R.T. : 6.771 min  
 Response: 0  
 Conc: N.D.



#17 4,4'-DDT

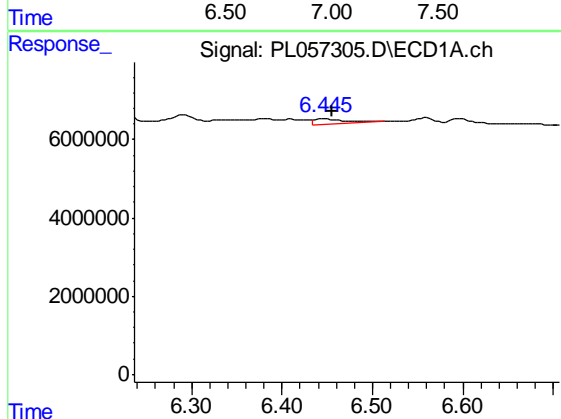
R.T.: 6.382 min  
 Delta R.T.: 0.002 min  
 Response: 5049690  
 Conc: 0.52 ng/ml

Instrument :  
 ECD\_L  
 ClientSampleId :  
 TP-2



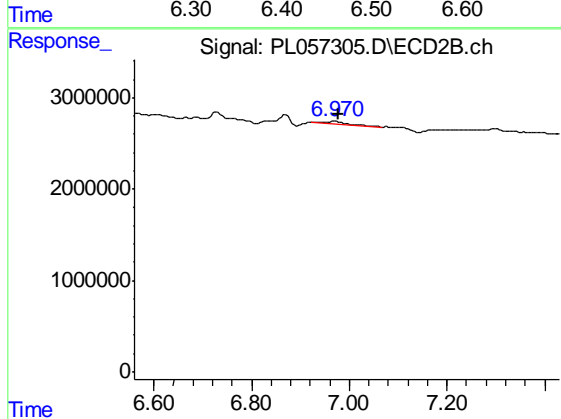
#17 4,4'-DDT

R.T.: 0.000 min  
 Exp R.T. : 7.068 min  
 Response: 0  
 Conc: N.D.



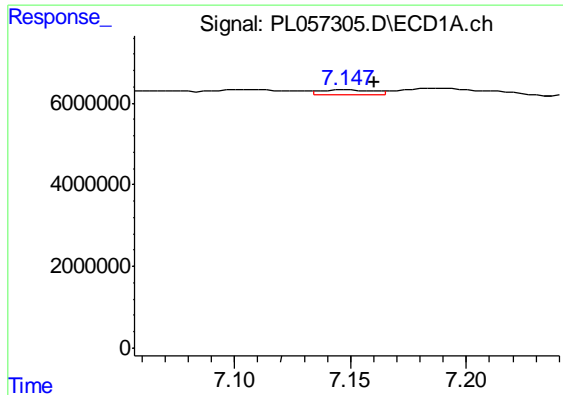
#18 Endrin aldehyde

R.T.: 6.447 min  
 Delta R.T.: -0.009 min  
 Response: 3428173  
 Conc: 0.38 ng/ml



#18 Endrin aldehyde

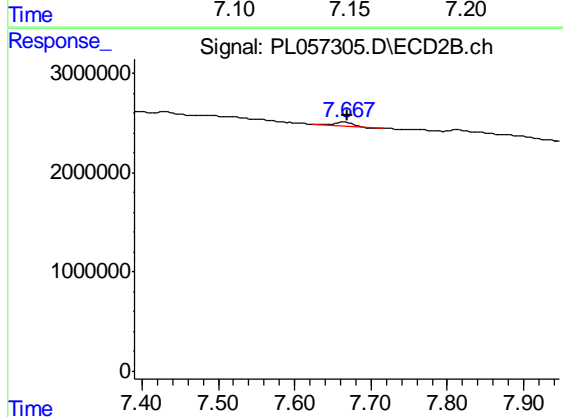
R.T.: 6.970 min  
 Delta R.T.: -0.008 min  
 Response: 1009441  
 Conc: 0.44 ng/ml



#21 Endrin ketone

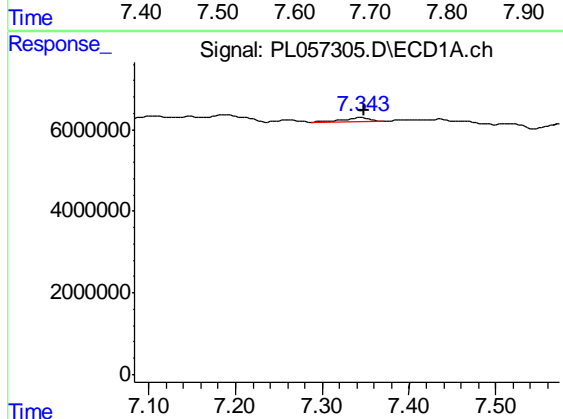
R.T.: 7.149 min  
 Delta R.T.: -0.011 min  
 Response: 1885781  
 Conc: 0.17 ng/ml

Instrument :  
 ECD\_L  
 ClientSampleId :  
 TP-2



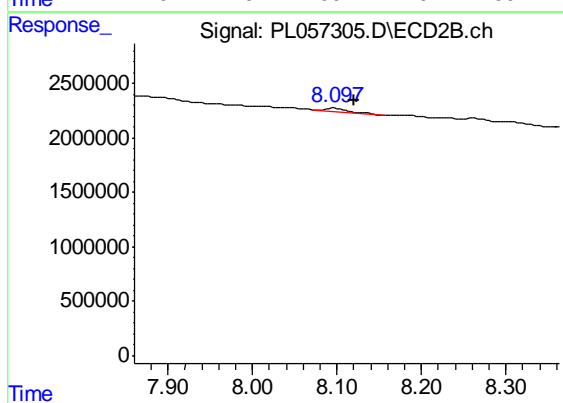
#21 Endrin ketone

R.T.: 7.665 min  
 Delta R.T.: -0.004 min  
 Response: 528037  
 Conc: 0.19 ng/ml



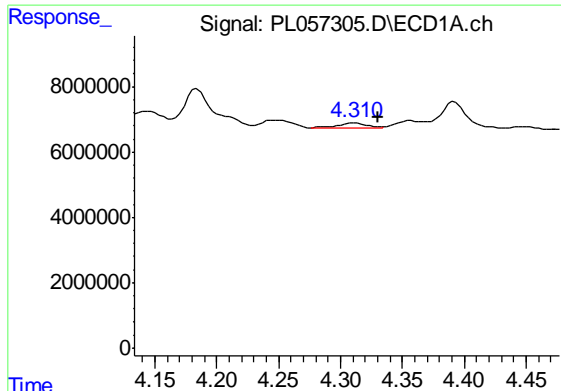
#22 Mirex

R.T.: 7.345 min  
 Delta R.T.: -0.003 min  
 Response: 1779649  
 Conc: 0.22 ng/ml



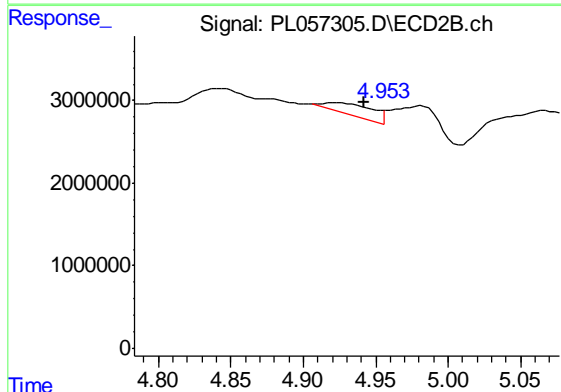
#22 Mirex

R.T.: 8.098 min  
 Delta R.T.: -0.022 min  
 Response: 605740  
 Conc: 0.32 ng/ml

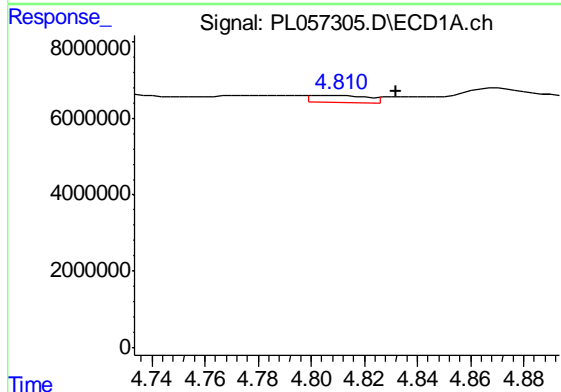


#23 Chlordane-1  
 R.T.: 4.312 min  
 Delta R.T.: -0.019 min  
 Response: 2876701  
 Conc: 9.46 ng/ml

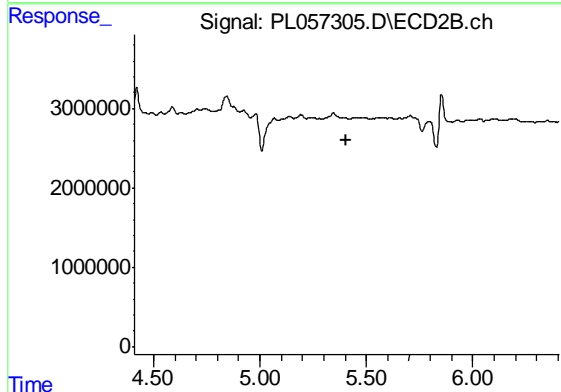
Instrument :  
 ECD\_L  
 ClientSampled :  
 TP-2



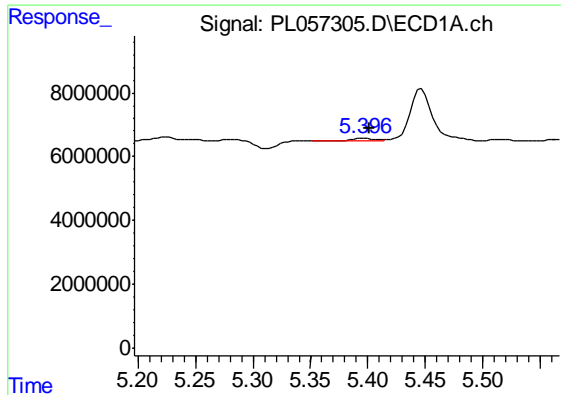
#23 Chlordane-1  
 R.T.: 4.924 min  
 Delta R.T.: -0.018 min  
 Response: 3109038  
 Conc: 38.76 ng/ml



#24 Chlordane-2  
 R.T.: 4.810 min  
 Delta R.T.: -0.022 min  
 Response: 2717483  
 Conc: 7.71 ng/ml



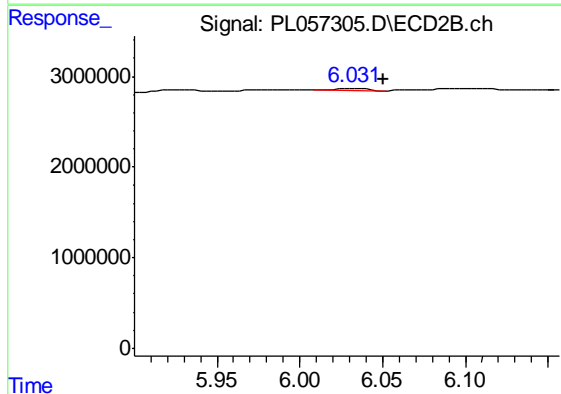
#24 Chlordane-2  
 R.T.: 0.000 min  
 Exp R.T. : 5.407 min  
 Response: 0  
 Conc: N.D.



#25 Chlordane-3

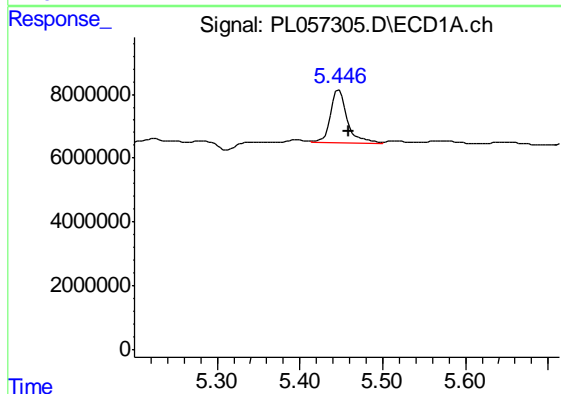
R.T.: 5.397 min  
 Delta R.T.: -0.004 min  
 Response: 1073547  
 Conc: 1.00 ng/ml

Instrument :  
 ECD\_L  
 ClientSampled :  
 TP-2



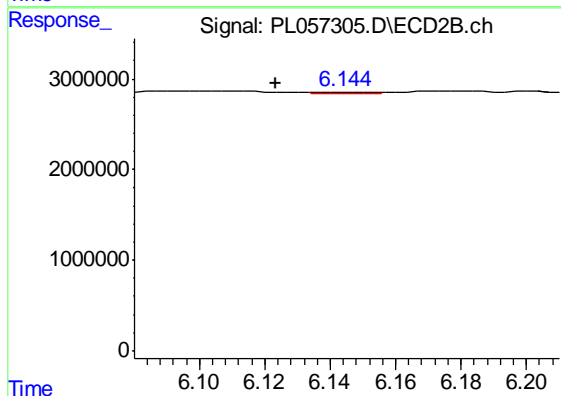
#25 Chlordane-3

R.T.: 6.032 min  
 Delta R.T.: -0.018 min  
 Response: 352421  
 Conc: 0.93 ng/ml



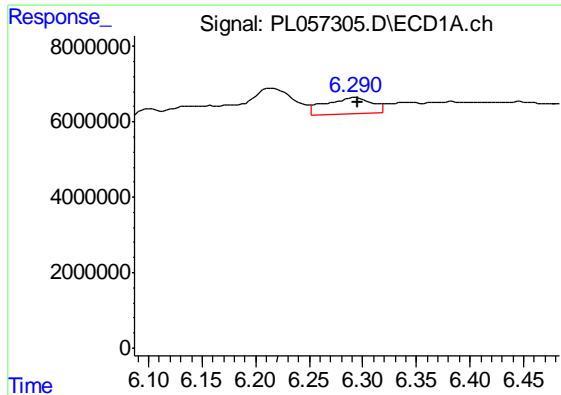
#26 Chlordane-4

R.T.: 5.447 min  
 Delta R.T.: -0.012 min  
 Response: 23418088  
 Conc: 25.48 ng/ml



#26 Chlordane-4

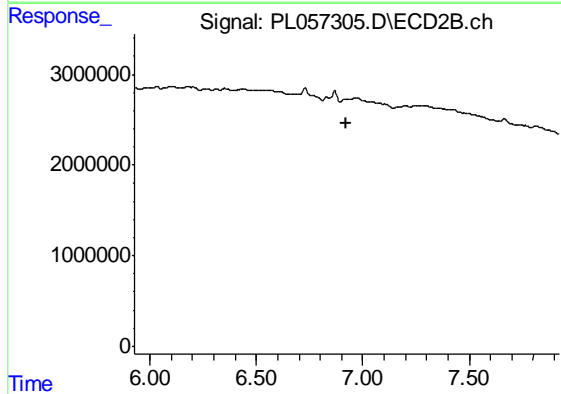
R.T.: 6.145 min  
 Delta R.T.: 0.022 min  
 Response: 256763  
 Conc: 0.56 ng/ml



#27 Chlordane-5

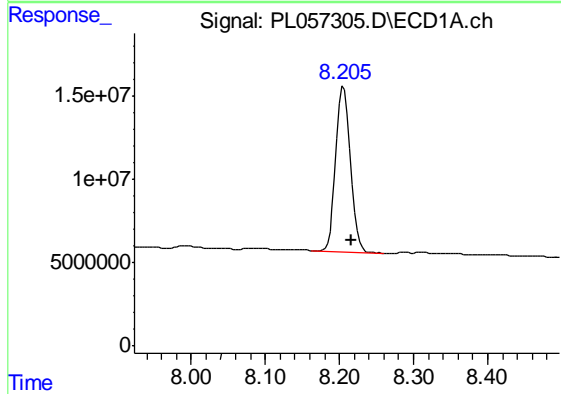
R.T.: 6.292 min  
 Delta R.T.: -0.003 min  
 Response: 12540180  
 Conc: 34.52 ng/ml

Instrument :  
 ECD\_L  
 ClientSampleId :  
 TP-2



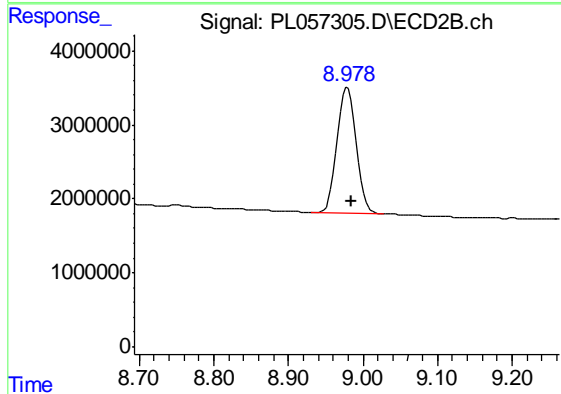
#27 Chlordane-5

R.T.: 0.000 min  
 Exp R.T. : 6.923 min  
 Response: 0  
 Conc: N.D.



#28 Decachlorobiphenyl

R.T.: 8.206 min  
 Delta R.T.: -0.010 min  
 Response: 134540562  
 Conc: 13.92 ng/ml



#28 Decachlorobiphenyl

R.T.: 8.979 min  
 Delta R.T.: -0.005 min  
 Response: 29675801  
 Conc: 13.97 ng/ml