

Data Path : Z:\pestpcbsrv\HPCHEM1\ECD_L\Data\PL031224\
 Data File : PL088496.D
 Signal(s) : Signal #1: ECD1A.ch Signal #2: ECD2B.ch
 Acq On : 11 Mar 2024 15:29
 Operator : AR\AJ
 Sample : I.BLK
 Misc :
 ALS Vial : 2 Sample Multiplier: 1

Instrument :
 ECD_L
 ClientSampleId :
 I.BLK

Integration File signal 1: autoint1.e
 Integration File signal 2: autoint2.e
 Quant Time: Mar 11 16:35:38 2024
 Quant Method : Z:\pestpcbsrv\HPCHEM1\ECD_L\methods\PL021524.M
 Quant Title : GC Extractables
 QLast Update : Fri Feb 16 21:46:54 2024
 Response via : Initial Calibration
 Integrator: ChemStation

Volume Inj. : 1 µl
 Signal #1 Phase : ZB-MR2 Signal #2 Phase: ZB-MR1
 Signal #1 Info : 30M x 0.32mm x0.2 Signal #2 Info : 30M x 0.32mm x0.5µm

Compound	RT#1	RT#2	Resp#1	Resp#2	ng/ml	ng/ml

System Monitoring Compounds						
1) SA Tetrachlo...	3.635	2.852	55048497	27449607	20.042	19.572
28) SA Decachlor...	9.306	8.084	47695266	27996889	24.765	21.988

Target Compounds

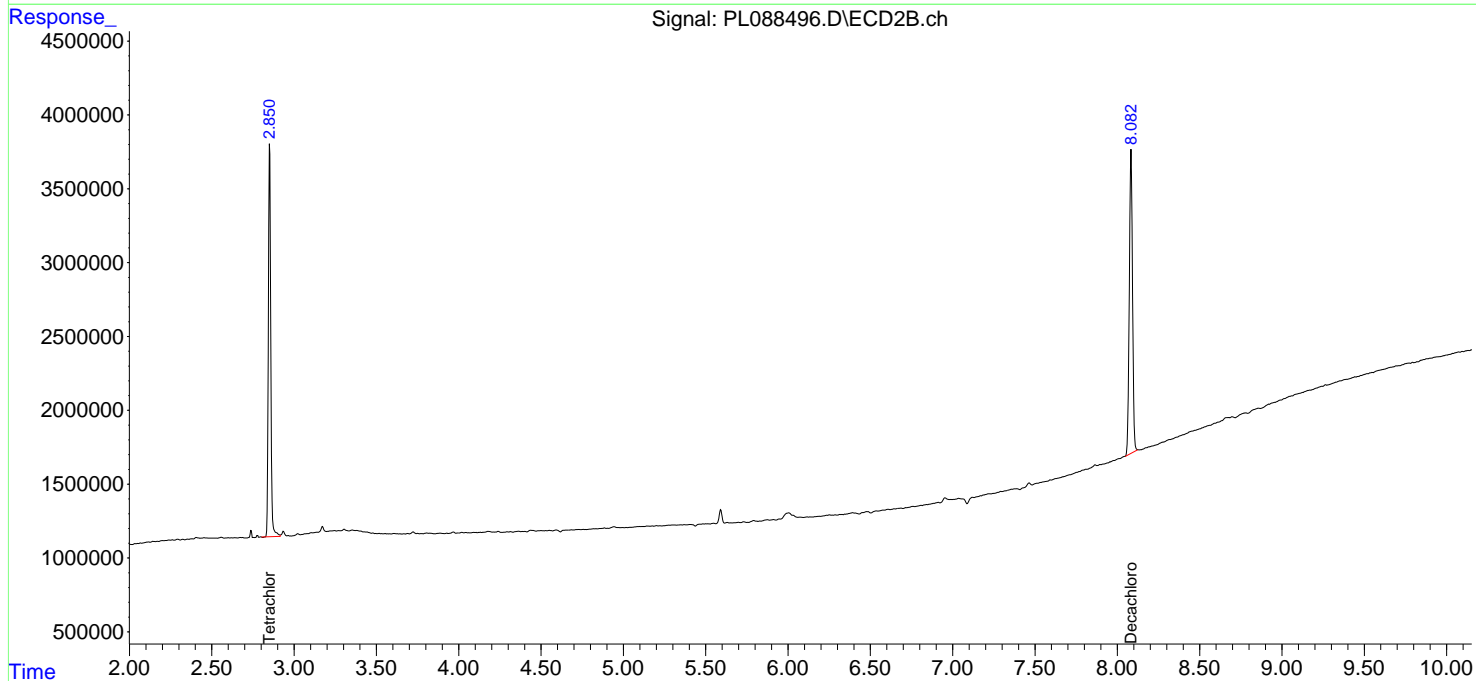
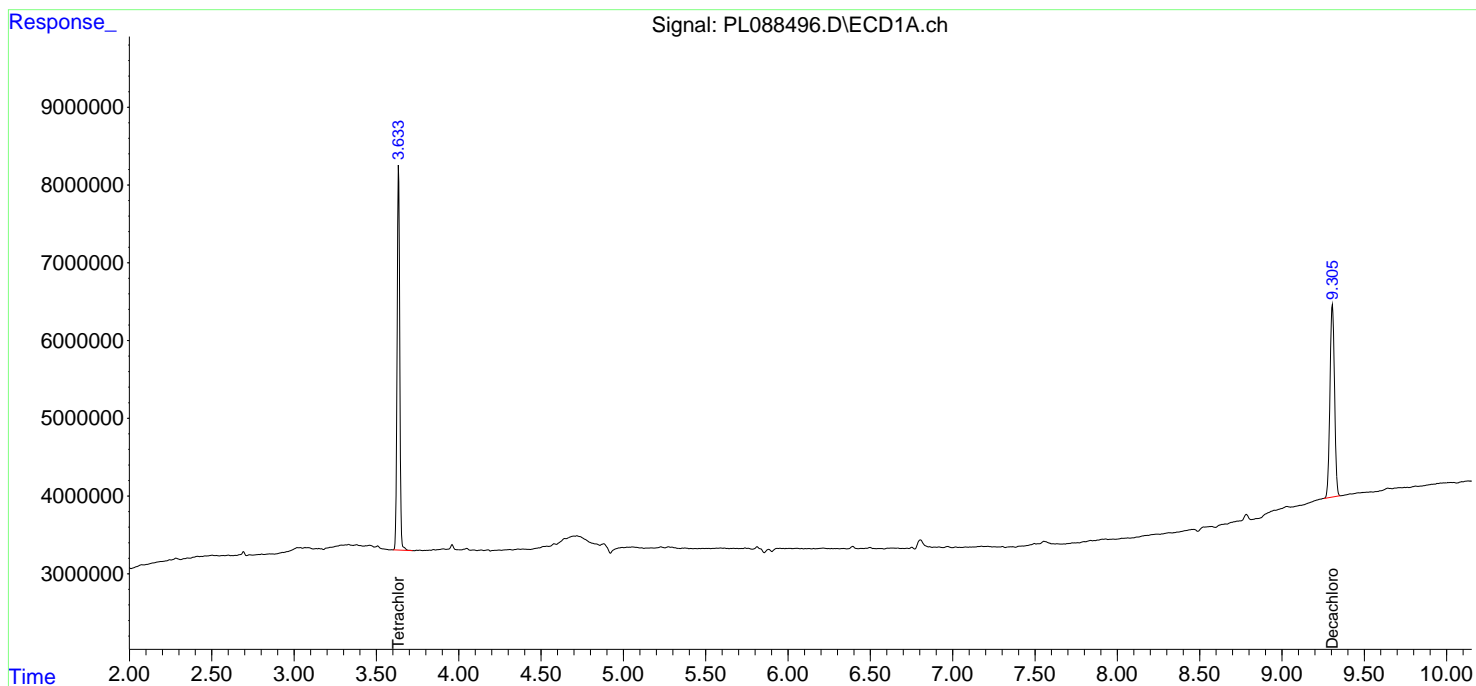
(f)=RT Delta > 1/2 Window (#)=Amounts differ by > 25% (m)=manual int.

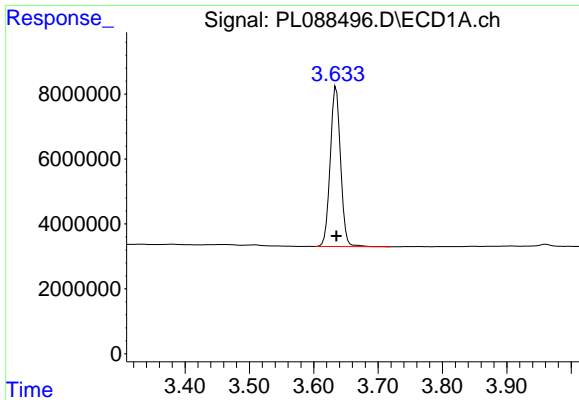
Data Path : Z:\pestpcbsrv\HPCHEM1\ECD_L\Data\PL031224\
 Data File : PL088496.D
 Signal(s) : Signal #1: ECD1A.ch Signal #2: ECD2B.ch
 Acq On : 11 Mar 2024 15:29
 Operator : AR\AJ
 Sample : I.BLK
 Misc :
 ALS Vial : 2 Sample Multiplier: 1

Instrument :
 ECD_L
 ClientSampleId :
 I.BLK

Integration File signal 1: autoint1.e
 Integration File signal 2: autoint2.e
 Quant Time: Mar 11 16:35:38 2024
 Quant Method : Z:\pestpcbsrv\HPCHEM1\ECD_L\methods\PL021524.M
 Quant Title : GC Extractables
 QLast Update : Fri Feb 16 21:46:54 2024
 Response via : Initial Calibration
 Integrator: ChemStation

Volume Inj. : 1 µl
 Signal #1 Phase : ZB-MR2 Signal #2 Phase: ZB-MR1
 Signal #1 Info : 30M x 0.32mm x0.2 Signal #2 Info : 30M x 0.32mm x0.5µm

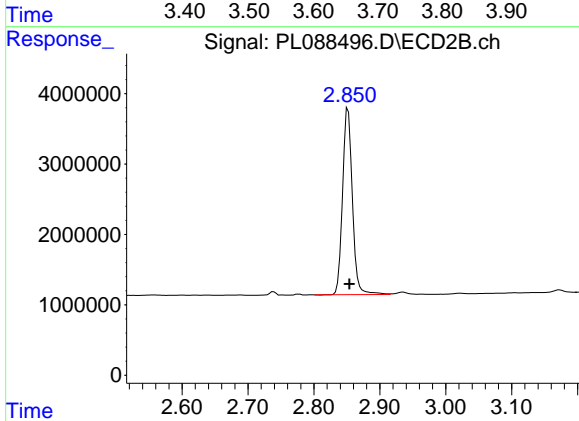




#1 Tetrachloro-m-xylene

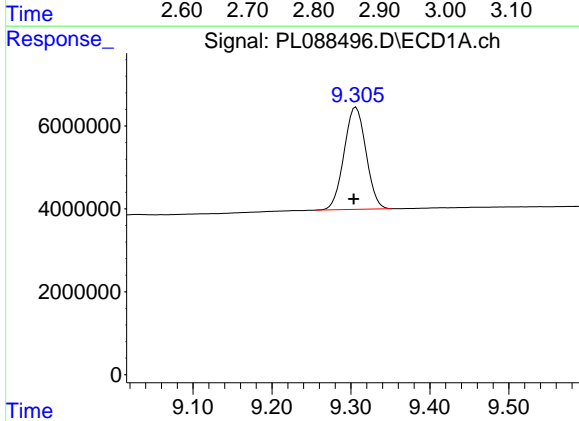
R.T.: 3.635 min
 Delta R.T.: 0.000 min
 Response: 55048497
 Conc: 20.04 ng/ml

Instrument :
 ECD_L
 ClientSampleId :
 I.BLK



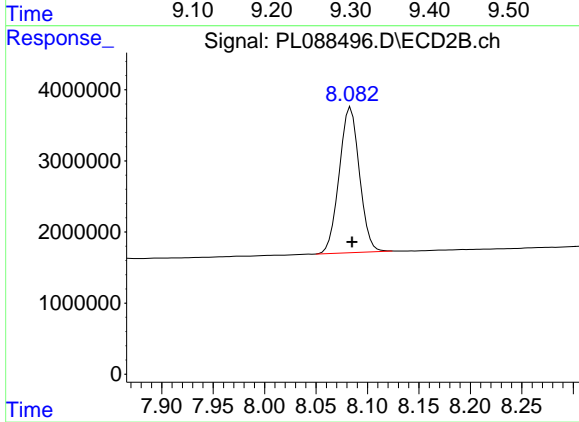
#1 Tetrachloro-m-xylene

R.T.: 2.852 min
 Delta R.T.: -0.002 min
 Response: 27449607
 Conc: 19.57 ng/ml



#28 Decachlorobiphenyl

R.T.: 9.306 min
 Delta R.T.: 0.003 min
 Response: 47695266
 Conc: 24.76 ng/ml



#28 Decachlorobiphenyl

R.T.: 8.084 min
 Delta R.T.: -0.001 min
 Response: 27996889
 Conc: 21.99 ng/ml