

Data Path : Z:\pestpcbsrv\HPCHEM1\ECD_D\Data\PD031319\
 Data File : PD051787.D
 Signal(s) : Signal #1: ECD1A.CH Signal #2: ECD2B.CH
 Acq On : 13 Mar 2019 16:18
 Operator : AJ\SJ
 Sample : PIBLK31
 Misc :
 ALS Vial : 2 Sample Multiplier: 1

Instrument :
 ECD_L
 ClientSampleId :
 PIBLK31

Integration File signal 1: autoint1.e
 Integration File signal 2: autoint2.e
 Quant Time: Mar 14 01:24:53 2019
 Quant Method : Z:\pestpcbsrv\HPCHEM1\ECD_D\Method\PD022219CLP.M
 Quant Title : GC Extractables
 QLast Update : Fri Feb 22 04:35:08 2019
 Response via : Initial Calibration
 Integrator: ChemStation 6890 Scale Mode: Large solvent peaks clipped

Volume Inj. : 1 µl
 Signal #1 Phase : ZB-MR2 Signal #2 Phase: ZB-MR1
 Signal #1 Info : 30M x 0.32mm x0.2 Signal #2 Info : 30M x 0.32mm x 0.50µm

Compound	RT#1	RT#2	Resp#1	Resp#2	ng/ml	ng/ml

System Monitoring Compounds						
1) SA Tetrachlo...	3.223	4.043	33661208	733.3E6	23.424	23.735
27) SA Decachlor...	7.823	9.155	51740611	750.0E6	43.022	39.561
Target Compounds						
6) B beta-BHC	0.000	4.937f	0	43549056	N.D.	2.195

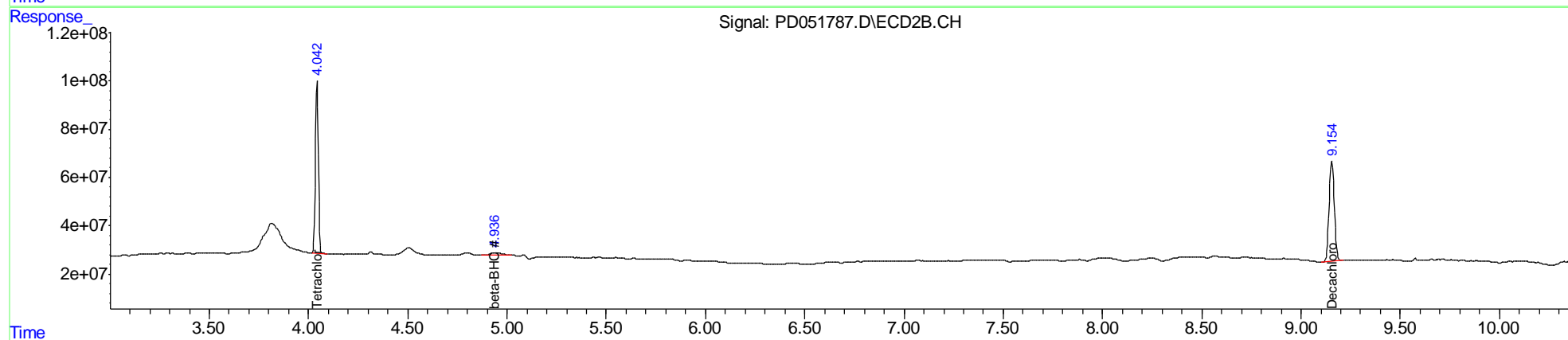
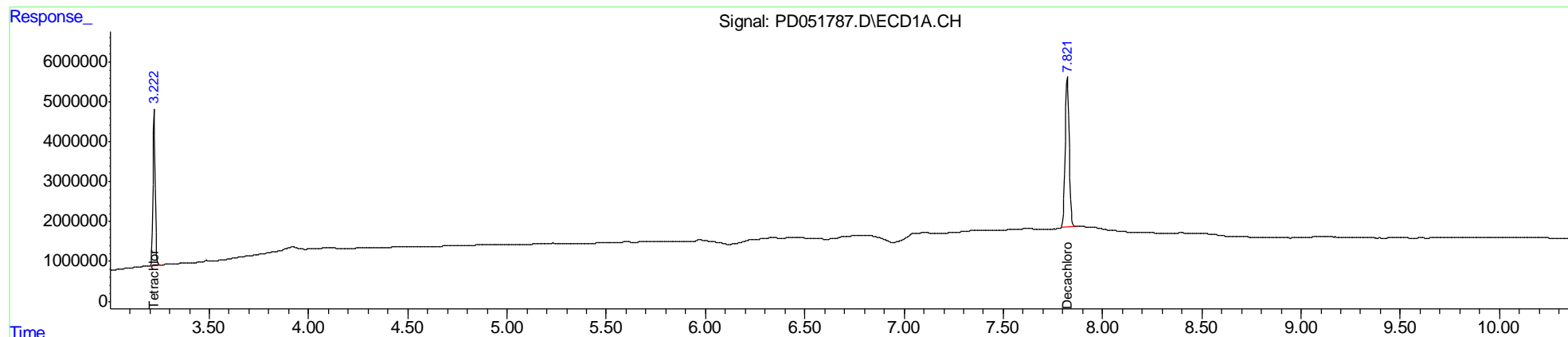
(f)=RT Delta > 1/2 Window (#)=Amounts differ by > 25% (m)=manual int.

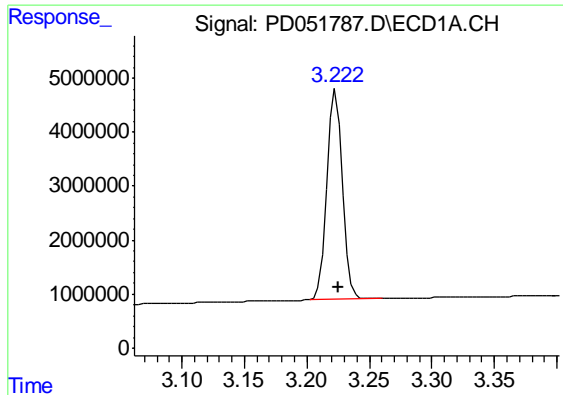
Data Path : Z:\pestpcbsrv\HPCHEM1\ECD_D\Data\PD031319\
 Data File : PD051787.D
 Signal(s) : Signal #1: ECD1A.CH Signal #2: ECD2B.CH
 Acq On : 13 Mar 2019 16:18
 Operator : AJ\SJ
 Sample : PIBLK31
 Misc :
 ALS Vial : 2 Sample Multiplier: 1

Instrument :
 ECD_L
 ClientSampleId :
 PIBLK31

Integration File signal 1: autoint1.e
 Integration File signal 2: autoint2.e
 Quant Time: Mar 14 01:24:53 2019
 Quant Method : Z:\pestpcbsrv\HPCHEM1\ECD_D\Method\PD022219CLP.M
 Quant Title : GC Extractables
 QLast Update : Fri Feb 22 04:35:08 2019
 Response via : Initial Calibration
 Integrator: ChemStation 6890 Scale Mode: Large solvent peaks clipped

Volume Inj. : 1 µl
 Signal #1 Phase : ZB-MR2 Signal #2 Phase: ZB-MR1
 Signal #1 Info : 30M x 0.32mm x0.2 Signal #2 Info : 30M x 0.32mm x 0.50µm

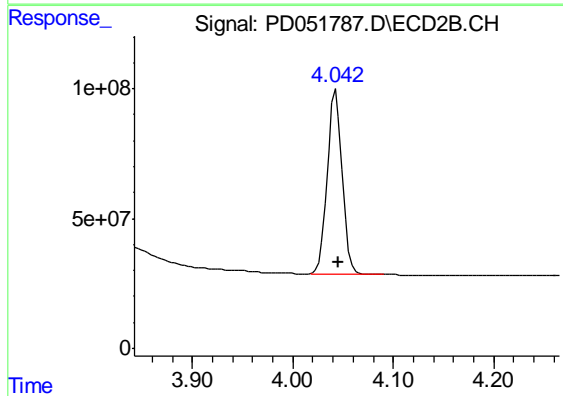




#1 Tetrachloro-m-xylene

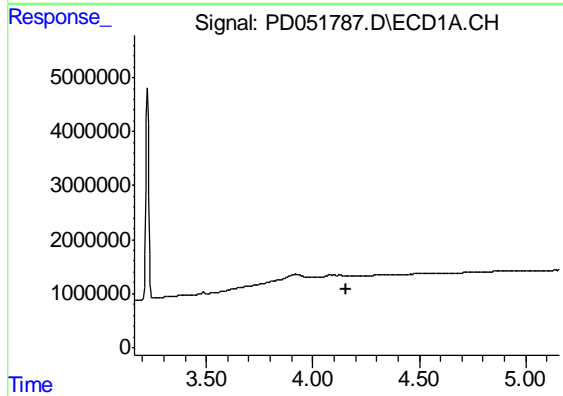
R.T.: 3.223 min
 Delta R.T.: -0.002 min
 Response: 33661208
 Conc: 23.42 ng/ml

Instrument :
 ECD_L
 ClientSampleId :
 PIBLK31



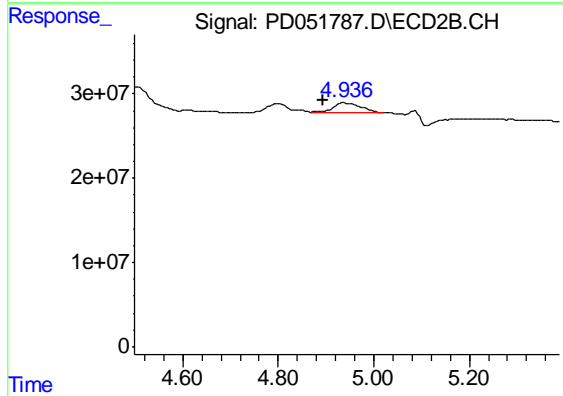
#1 Tetrachloro-m-xylene

R.T.: 4.043 min
 Delta R.T.: -0.002 min
 Response: 733311606
 Conc: 23.73 ng/ml



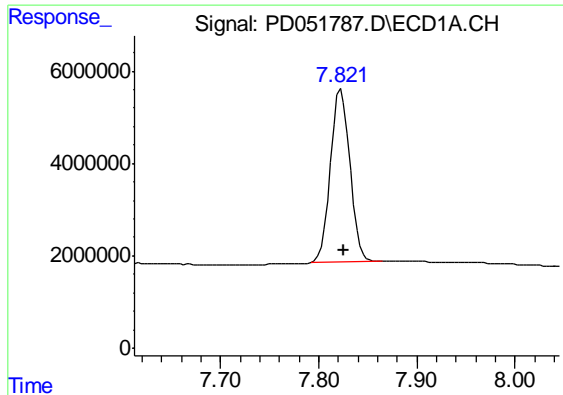
#6 beta-BHC

R.T.: 0.000 min
 Exp R.T. : 4.159 min
 Response: 0
 Conc: N.D.



#6 beta-BHC

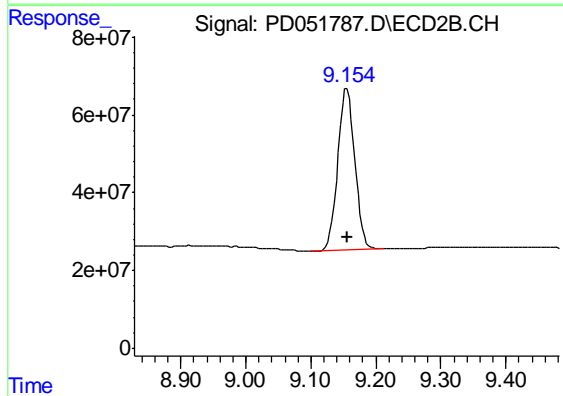
R.T.: 4.937 min
 Delta R.T.: 0.043 min
 Response: 43549056
 Conc: 2.19 ng/ml



#27 Decachlorobiphenyl

R.T.: 7.823 min
Delta R.T.: -0.003 min
Response: 51740611
Conc: 43.02 ng/ml

Instrument :
ECD_L
ClientSampleId :
PIBLK31



#27 Decachlorobiphenyl

R.T.: 9.155 min
Delta R.T.: -0.002 min
Response: 749974721
Conc: 39.56 ng/ml