

Data Path : Z:\pestpcbsrv\HPCHEM1\ECD_D\Data\PD031319\
 Data File : PD051800.D
 Signal(s) : Signal #1: ECD1A.CH Signal #2: ECD2B.CH
 Acq On : 13 Mar 2019 20:54
 Operator : AJ\SJ
 Sample : K1794-10
 Misc :
 ALS Vial : 15 Sample Multiplier: 1

Instrument :
 ECD_L
ClientSampleId :
 BF5P0

Integration File signal 1: autoint1.e
 Integration File signal 2: autoint2.e
 Quant Time: Mar 14 01:28:15 2019
 Quant Method : Z:\pestpcbsrv\HPCHEM1\ECD_D\Method\PD022219CLP.M
 Quant Title : GC Extractables
 QLast Update : Fri Feb 22 04:35:08 2019
 Response via : Initial Calibration
 Integrator: ChemStation 6890 Scale Mode: Large solvent peaks clipped

Volume Inj. : 1 µl
 Signal #1 Phase : ZB-MR2 Signal #2 Phase: ZB-MR1
 Signal #1 Info : 30M x 0.32mm x0.2 Signal #2 Info : 30M x 0.32mm x 0.50µm

Compound	RT#1	RT#2	Resp#1	Resp#2	ng/ml	ng/ml

System Monitoring Compounds						
1) SA Tetrachlo...	3.223	4.043	16302012	351.0E6	11.344	11.360
27) SA Decachlor...	7.821	9.155	21761049	325.3E6	18.094	17.160
Target Compounds						
6) B beta-BHC	0.000	4.936f	0 35225913	N.D.	1.775	
8) B Heptachlo...	0.000	5.912	0 42058159	N.D.	1.175	

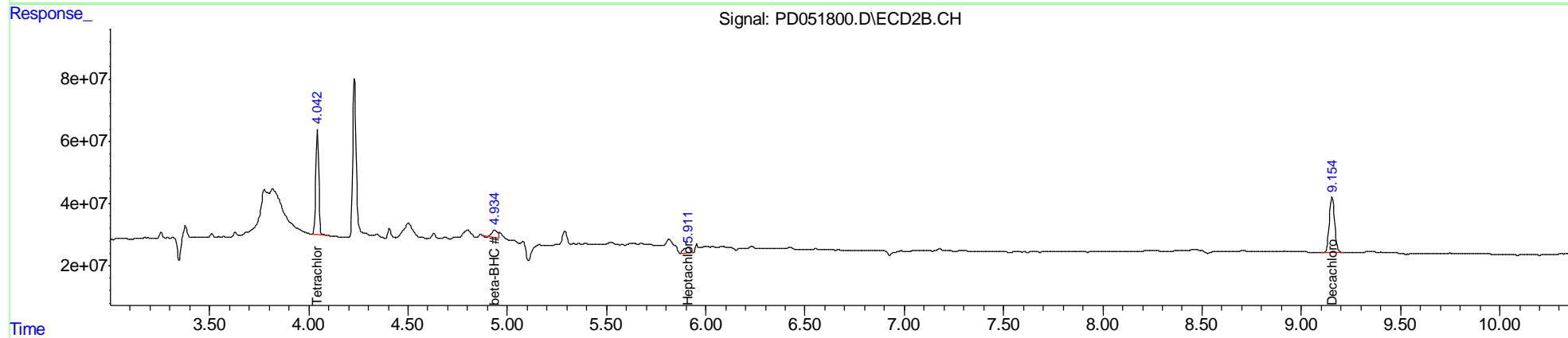
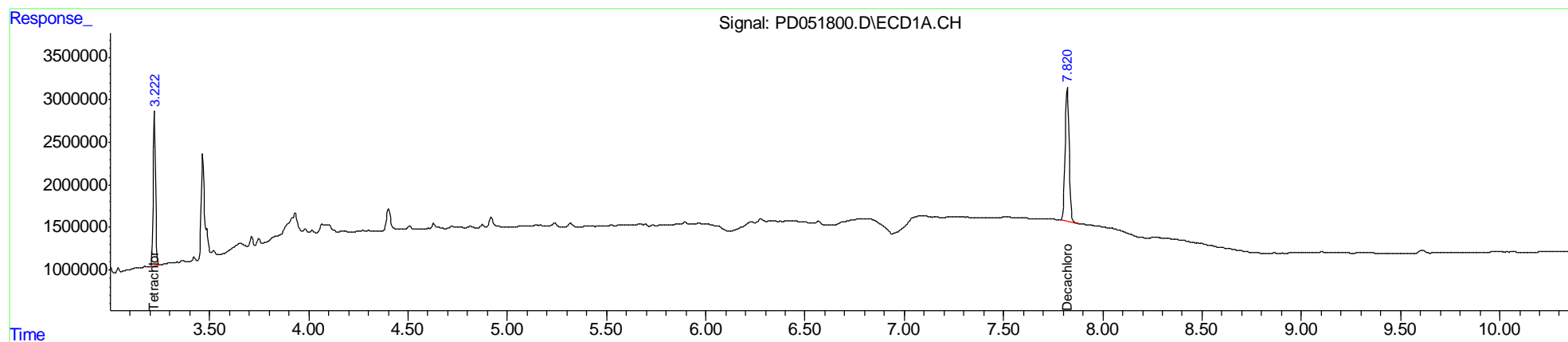
(f)=RT Delta > 1/2 Window (#)=Amounts differ by > 25% (m)=manual int.

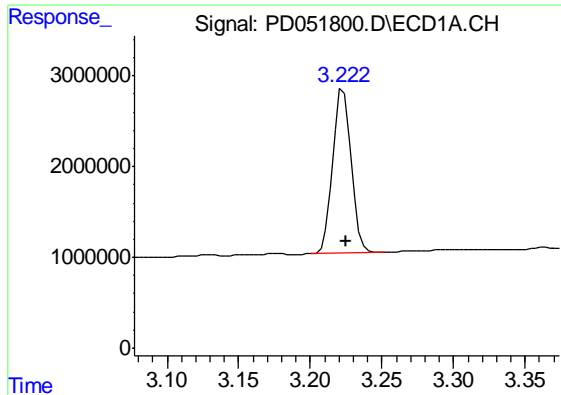
Data Path : Z:\pestpcbsrv\HPCHEM1\ECD_D\Data\PD031319\
 Data File : PD051800.D
 Signal(s) : Signal #1: ECD1A.CH Signal #2: ECD2B.CH
 Acq On : 13 Mar 2019 20:54
 Operator : AJ\SJ
 Sample : K1794-10
 Misc :
 ALS Vial : 15 Sample Multiplier: 1

Instrument :
 ECD_L
 ClientSampleId :
 BF5P0

Integration File signal 1: autoint1.e
 Integration File signal 2: autoint2.e
 Quant Time: Mar 14 01:28:15 2019
 Quant Method : Z:\pestpcbsrv\HPCHEM1\ECD_D\Method\PD022219CLP.M
 Quant Title : GC Extractables
 QLast Update : Fri Feb 22 04:35:08 2019
 Response via : Initial Calibration
 Integrator: ChemStation 6890 Scale Mode: Large solvent peaks clipped

Volume Inj. : 1 µl
 Signal #1 Phase : ZB-MR2 Signal #2 Phase: ZB-MR1
 Signal #1 Info : 30M x 0.32mm x0.2 Signal #2 Info : 30M x 0.32mm x 0.50µm

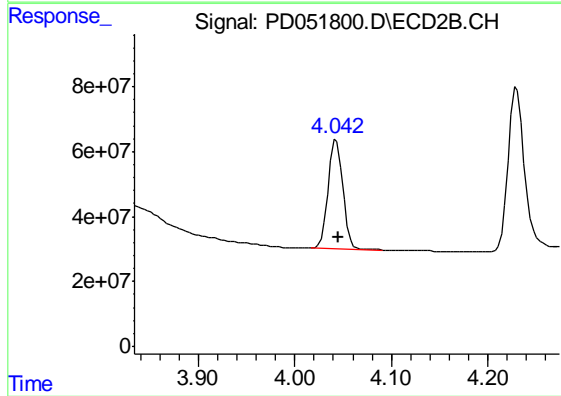




#1 Tetrachloro-m-xylene

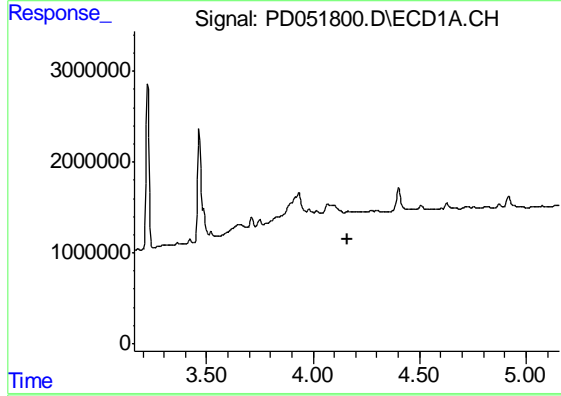
R.T.: 3.223 min
 Delta R.T.: -0.002 min
 Response: 16302012
 Conc: 11.34 ng/ml

Instrument :
 ECD_L
 ClientSampleId :
 BF5P0



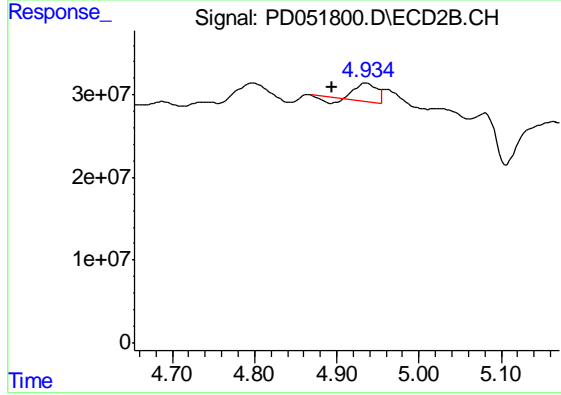
#1 Tetrachloro-m-xylene

R.T.: 4.043 min
 Delta R.T.: -0.002 min
 Response: 350981929
 Conc: 11.36 ng/ml



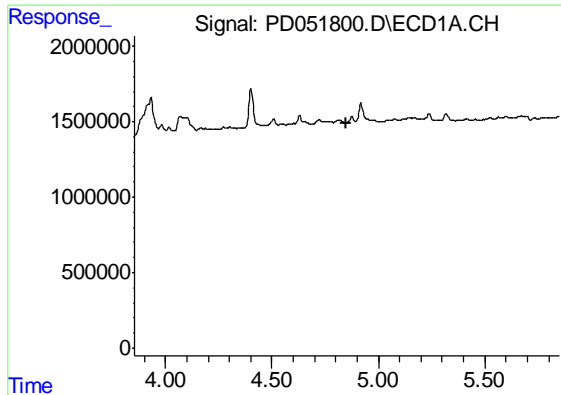
#6 beta-BHC

R.T.: 0.000 min
 Exp R.T. : 4.159 min
 Response: 0
 Conc: N.D.



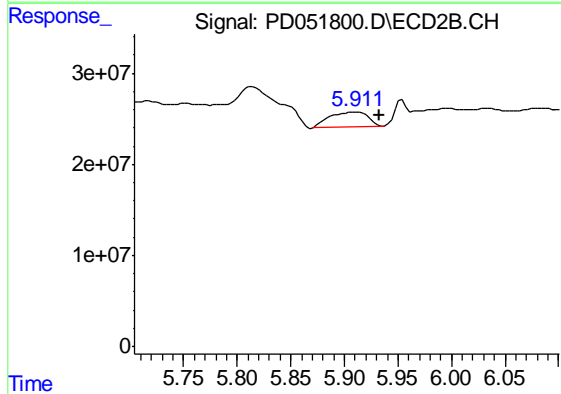
#6 beta-BHC

R.T.: 4.936 min
 Delta R.T.: 0.042 min
 Response: 35225913
 Conc: 1.78 ng/ml

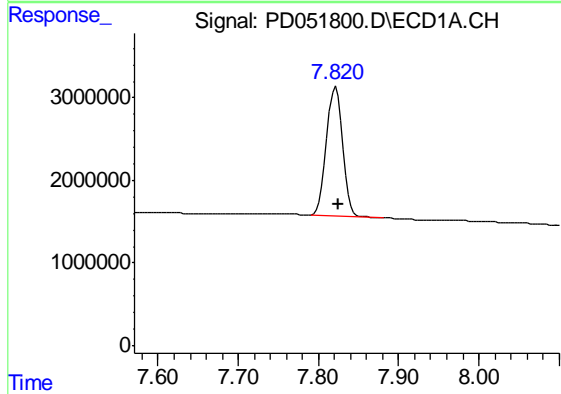


#8 Heptachlor epoxide
 R.T.: 0.000 min
 Exp R.T. : 4.851 min
 Response: 0
 Conc: N.D.

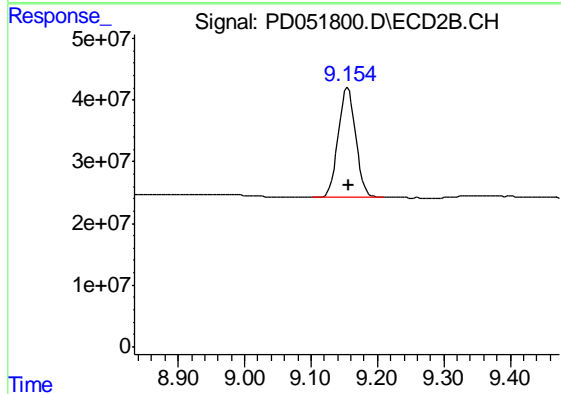
Instrument :
 ECD_L
 ClientSampleId :
 BF5P0



#8 Heptachlor epoxide
 R.T.: 5.912 min
 Delta R.T.: -0.021 min
 Response: 42058159
 Conc: 1.17 ng/ml



#27 Decachlorobiphenyl
 R.T.: 7.821 min
 Delta R.T.: -0.004 min
 Response: 21761049
 Conc: 18.09 ng/ml



#27 Decachlorobiphenyl
 R.T.: 9.155 min
 Delta R.T.: -0.002 min
 Response: 325303247
 Conc: 17.16 ng/ml