

Data Path : Z:\pestpcbsrv\HPCHEM1\ECD_L\Data\PL031321\
Data File : PL065252.D
Signal(s) : Signal #1: ECD1A.ch Signal #2: ECD2B.ch
Acq On : 12 Mar 2021 17:41
Operator : AR\AJ
Sample : HEXANE
Misc :
ALS Vial : 1 Sample Multiplier: 1

Instrument :
ECD_L
ClientSampleId :
HEXANE

Integration File signal 1: autoint1.e
Integration File signal 2: autoint2.e
Quant Time: Mar 15 02:40:50 2021
Quant Method : Z:\pestpcbsrv\HPCHEM1\ECD_L\methods\PL031321.M
Quant Title : GC Extractables
QLast Update : Sat Mar 13 01:11:50 2021
Response via : Initial Calibration
Integrator: ChemStation

Volume Inj. : 1 µl
Signal #1 Phase : ZB-MR2 Signal #2 Phase: ZB-MR1
Signal #1 Info : 30M x 0.32mm x0.2 Signal #2 Info : 30M x 0.32mm x0.5µm

Compound	RT#1	RT#2	Resp#1	Resp#2	ng/ml	ng/ml
----------	------	------	--------	--------	-------	-------

System Monitoring Compounds

Target Compounds

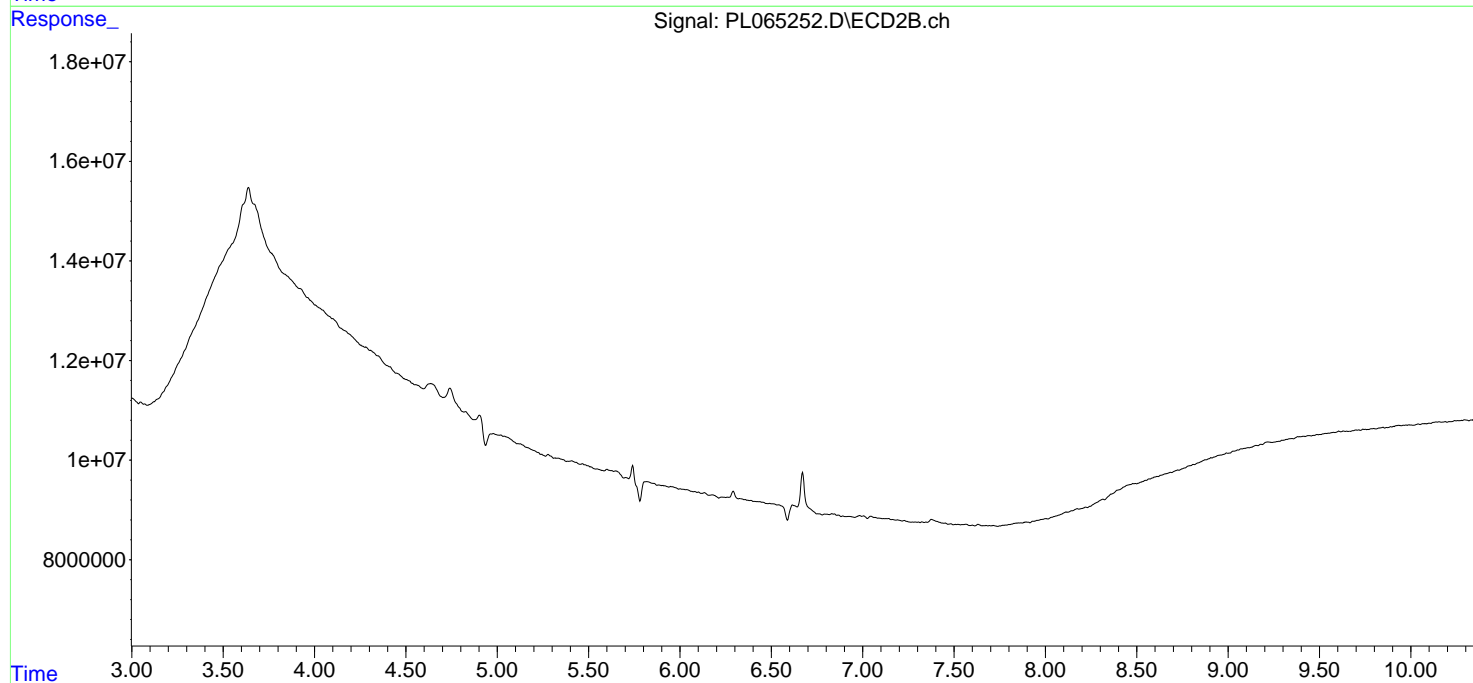
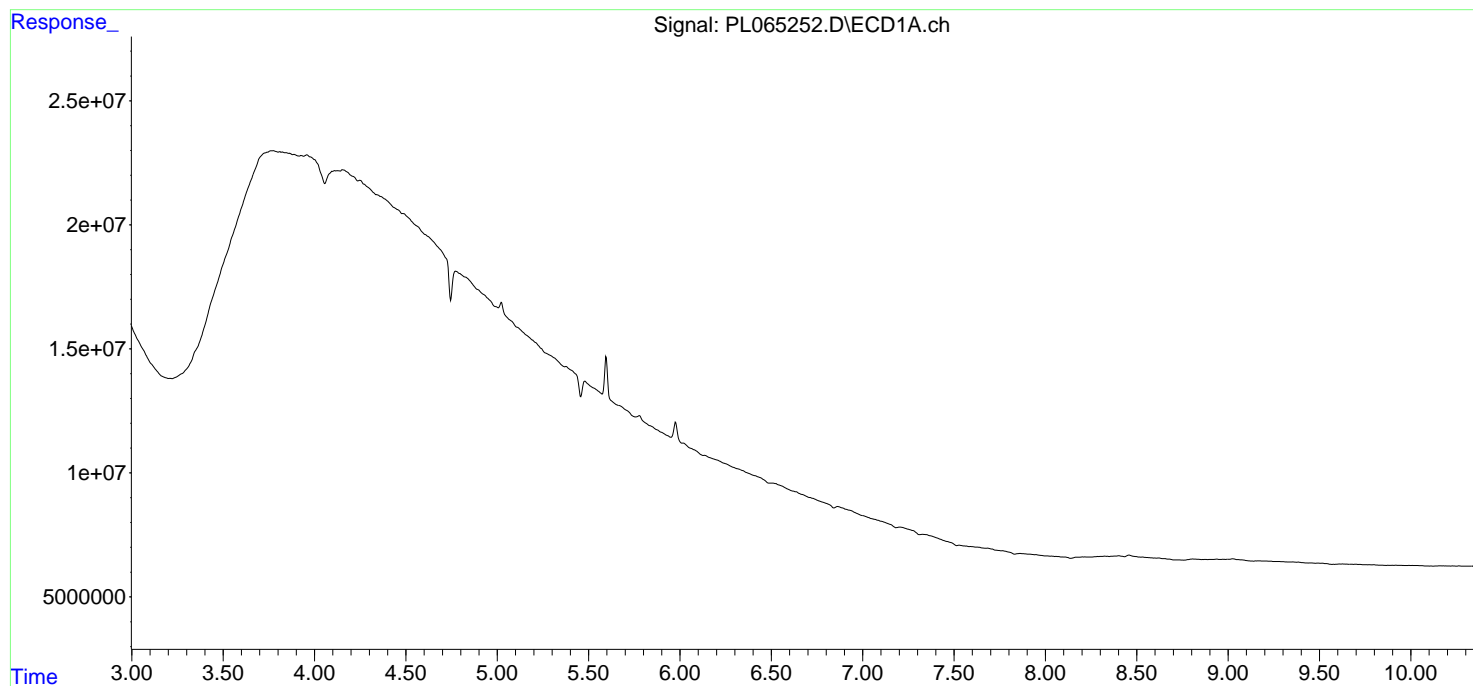
(f)=RT Delta > 1/2 Window (#)=Amounts differ by > 25% (m)=manual int.

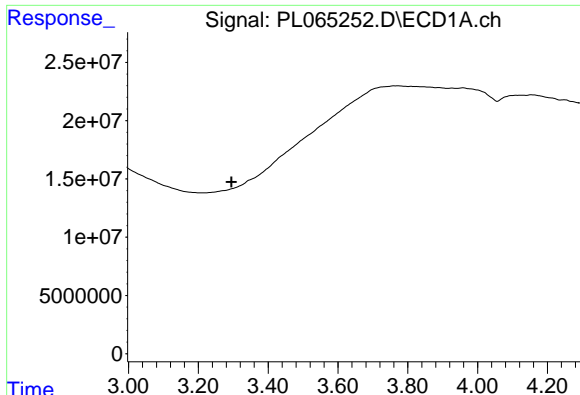
Data Path : Z:\pestpcbsrv\HPCHEM1\ECD_L\Data\PL031321\
Data File : PL065252.D
Signal(s) : Signal #1: ECD1A.ch Signal #2: ECD2B.ch
Acq On : 12 Mar 2021 17:41
Operator : AR\AJ
Sample : HEXANE
Misc :
ALS Vial : 1 Sample Multiplier: 1

Instrument :
ECD_L
ClientSampled :
HEXANE

Integration File signal 1: autoint1.e
Integration File signal 2: autoint2.e
Quant Time: Mar 15 02:40:50 2021
Quant Method : Z:\pestpcbsrv\HPCHEM1\ECD_L\methods\PL031321.M
Quant Title : GC Extractables
QLast Update : Sat Mar 13 01:11:50 2021
Response via : Initial Calibration
Integrator: ChemStation

Volume Inj. : 1 μ l
Signal #1 Phase : ZB-MR2 Signal #2 Phase: ZB-MR1
Signal #1 Info : 30M x 0.32mm x0.2 Signal #2 Info : 30M x 0.32mm x0.5 μ m

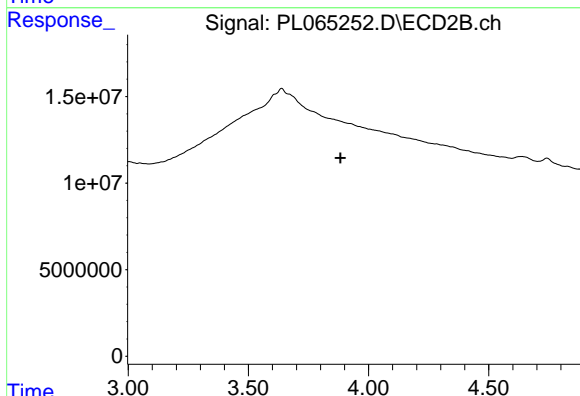




#1 Tetrachloro-m-xylene

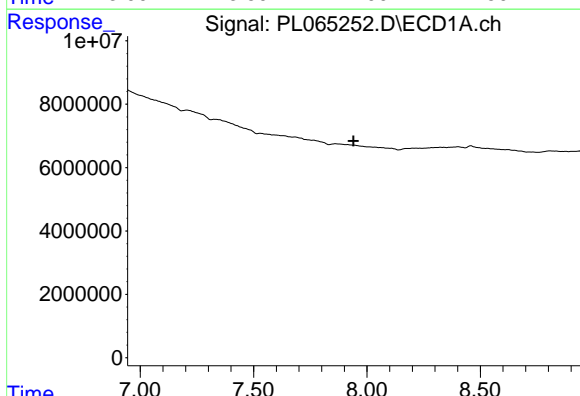
R.T.: 0.000 min
 Exp R.T. : 3.295 min
 Response: 0
 Conc: N.D.

Instrument :
 ECD_L
 ClientSampleId :
 HEXANE



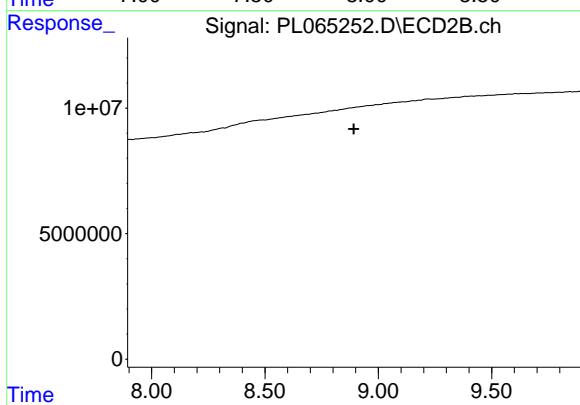
#1 Tetrachloro-m-xylene

R.T.: 0.000 min
 Exp R.T. : 3.883 min
 Response: 0
 Conc: N.D.



#28 Decachlorobiphenyl

R.T.: 0.000 min
 Exp R.T. : 7.941 min
 Response: 0
 Conc: N.D.



#28 Decachlorobiphenyl

R.T.: 0.000 min
 Exp R.T. : 8.892 min
 Response: 0
 Conc: N.D.