

Data Path : Z:\pestpcbsrv\HPCHEM1\ECD_L\Data\PL031321\
 Data File : PL065286.D
 Signal(s) : Signal #1: ECD1A.ch Signal #2: ECD2B.ch
 Acq On : 13 Mar 2021 01:49
 Operator : AR\AJ
 Sample : PB135087BS
 Misc :
 ALS Vial : 33 Sample Multiplier: 1

Instrument :
 ECD_L
 ClientSampleId :
 PB135087BS

Integration File signal 1: autoint1.e
 Integration File signal 2: autoint2.e
 Quant Time: Mar 15 01:50:09 2021
 Quant Method : Z:\pestpcbsrv\HPCHEM1\ECD_L\methods\PL031321.M
 Quant Title : GC Extractables
 QLast Update : Sat Mar 13 01:11:50 2021
 Response via : Initial Calibration
 Integrator: ChemStation

Volume Inj. : 1 µl
 Signal #1 Phase : ZB-MR2 Signal #2 Phase: ZB-MR1
 Signal #1 Info : 30M x 0.32mm x0.2 Signal #2 Info : 30M x 0.32mm x0.5µm

Compound	RT#1	RT#2	Resp#1	Resp#2	ng/ml	ng/ml

System Monitoring Compounds						
1) SA Tetrachlo...	3.294	3.885	45147908	51124964	19.163	18.561
28) SA Decachlor...	7.941	8.896	39085421	35049956	18.138	19.078
Target Compounds						
23) Chlordane-1	4.131	4.866	19821131	18252696	191.246	186.783
24) Chlordane-2	4.618	5.334	16481464	20929436	166.046	203.352
25) Chlordane-3	5.172	5.977	52797885	82550286	175.554	201.972
26) Chlordane-4	5.226	6.049	47156479	95098280	173.328	200.584
27) Chlordane-5	6.040	6.853	15138264	15325217	166.754	193.204

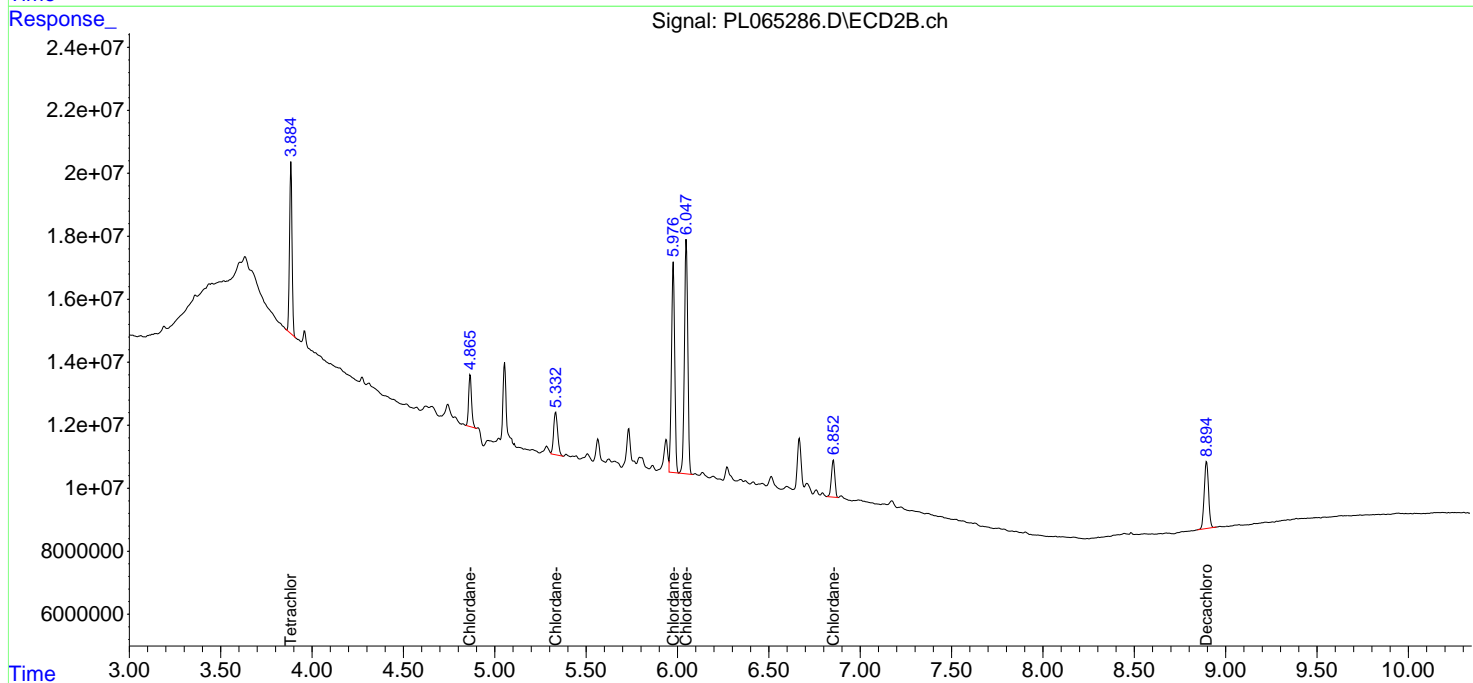
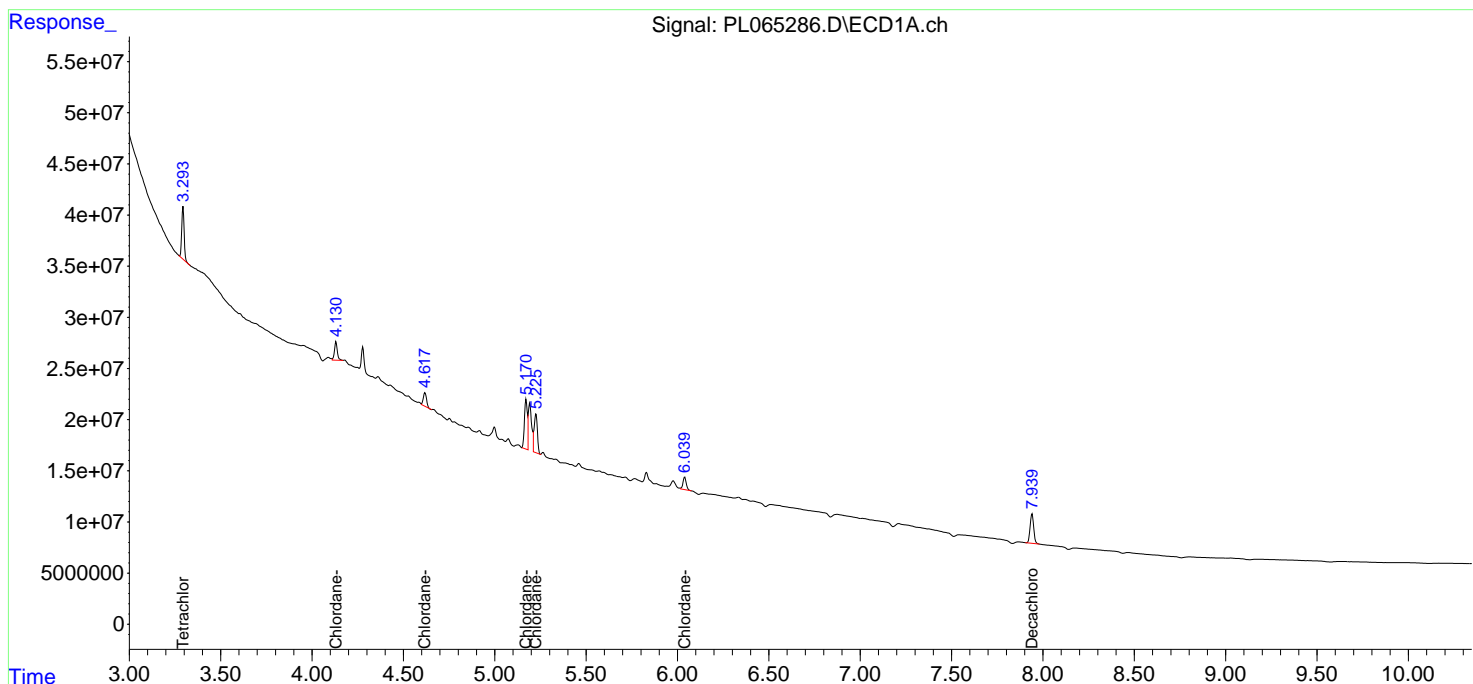
(f)=RT Delta > 1/2 Window (#)=Amounts differ by > 25% (m)=manual int.

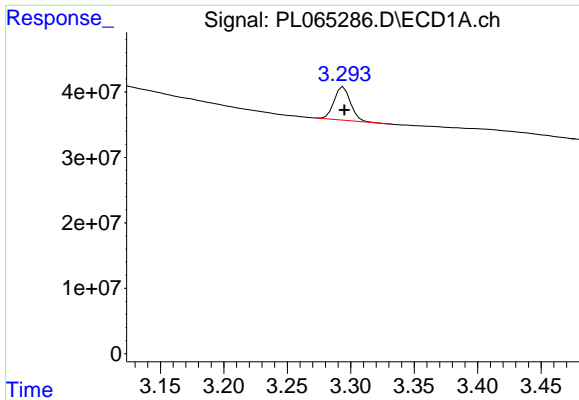
Data Path : Z:\pestpcbsrv\HPCHEM1\ECD_L\Data\PL031321\
 Data File : PL065286.D
 Signal(s) : Signal #1: ECD1A.ch Signal #2: ECD2B.ch
 Acq On : 13 Mar 2021 01:49
 Operator : AR\AJ
 Sample : PB135087BS
 Misc :
 ALS Vial : 33 Sample Multiplier: 1

Instrument :
 ECD_L
 ClientSampled :
 PB135087BS

Integration File signal 1: autoint1.e
 Integration File signal 2: autoint2.e
 Quant Time: Mar 15 01:50:09 2021
 Quant Method : Z:\pestpcbsrv\HPCHEM1\ECD_L\methods\PL031321.M
 Quant Title : GC Extractables
 QLast Update : Sat Mar 13 01:11:50 2021
 Response via : Initial Calibration
 Integrator: ChemStation

Volume Inj. : 1 µl
 Signal #1 Phase : ZB-MR2 Signal #2 Phase: ZB-MR1
 Signal #1 Info : 30M x 0.32mm x0.2 Signal #2 Info : 30M x 0.32mm x0.5µm

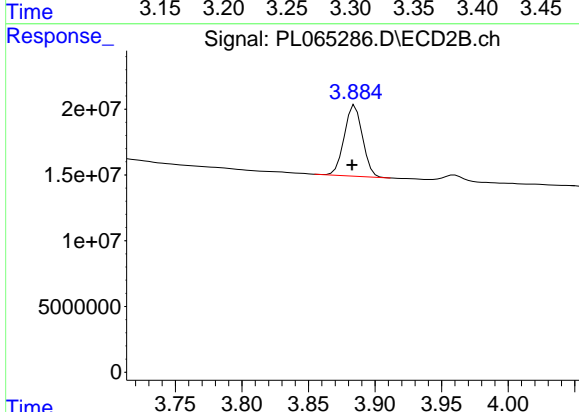




#1 Tetrachloro-m-xylene

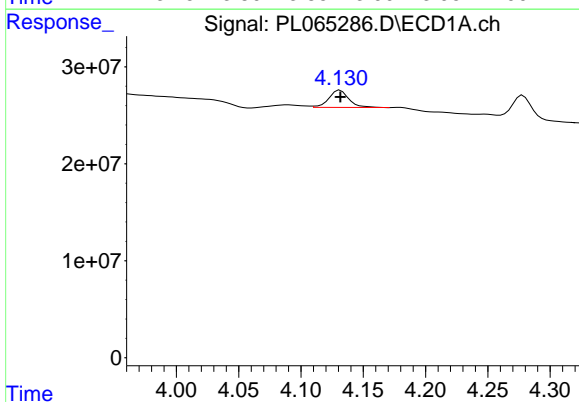
R.T.: 3.294 min
 Delta R.T.: 0.000 min
 Response: 45147908
 Conc: 19.16 ng/ml

Instrument :
 ECD_L
 ClientSampleId :
 PB135087BS



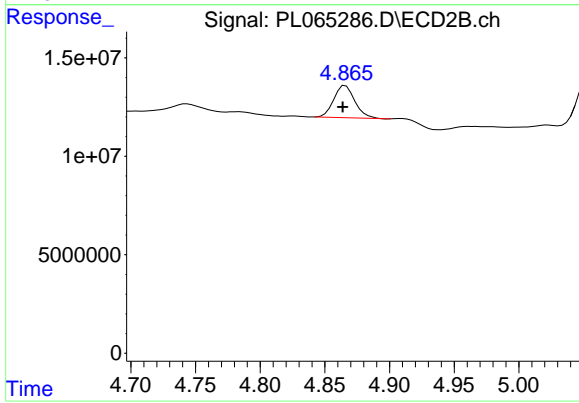
#1 Tetrachloro-m-xylene

R.T.: 3.885 min
 Delta R.T.: 0.002 min
 Response: 51124964
 Conc: 18.56 ng/ml



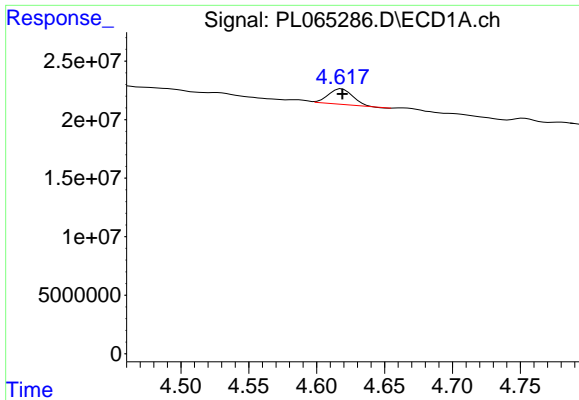
#23 Chlordane-1

R.T.: 4.131 min
 Delta R.T.: 0.000 min
 Response: 19821131
 Conc: 191.25 ng/ml



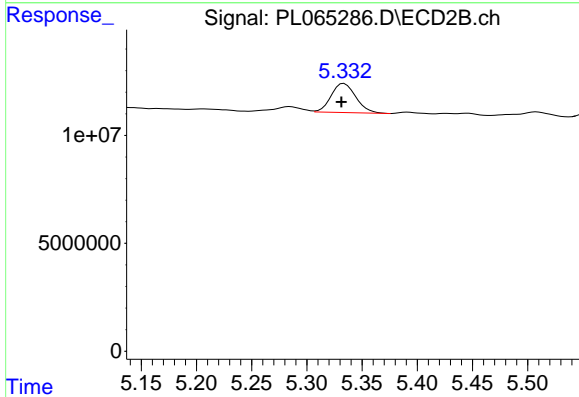
#23 Chlordane-1

R.T.: 4.866 min
 Delta R.T.: 0.002 min
 Response: 18252696
 Conc: 186.78 ng/ml

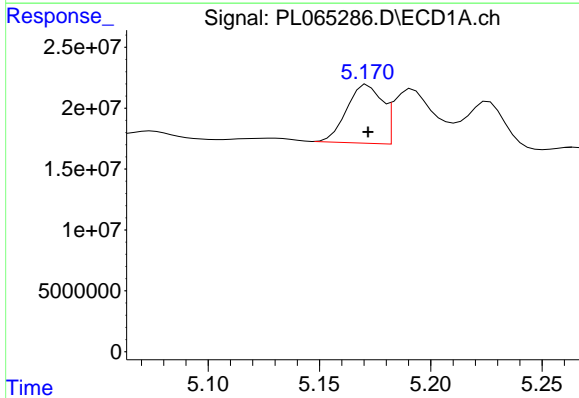


#24 Chlordane-2
 R.T.: 4.618 min
 Delta R.T.: 0.000 min
 Response: 16481464
 Conc: 166.05 ng/ml

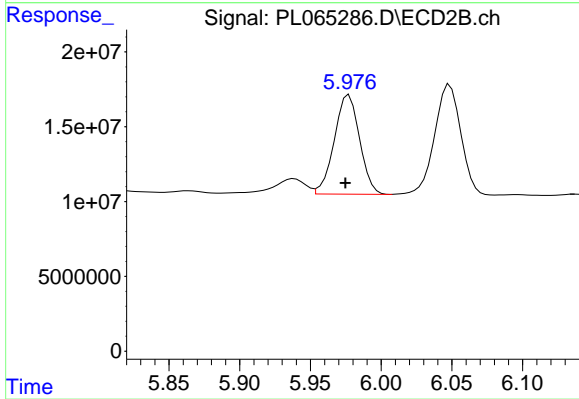
Instrument :
 ECD_L
 ClientSampleId :
 PB135087BS



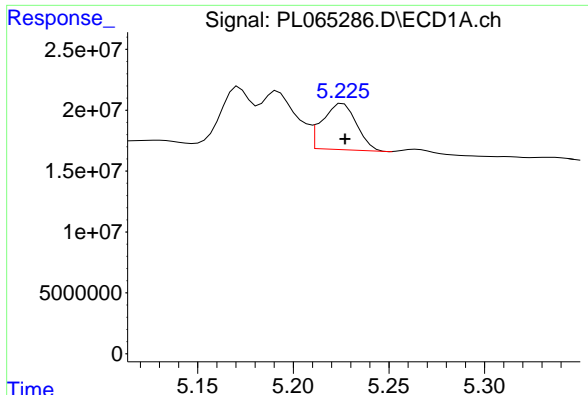
#24 Chlordane-2
 R.T.: 5.334 min
 Delta R.T.: 0.002 min
 Response: 20929436
 Conc: 203.35 ng/ml



#25 Chlordane-3
 R.T.: 5.172 min
 Delta R.T.: 0.000 min
 Response: 52797885
 Conc: 175.55 ng/ml

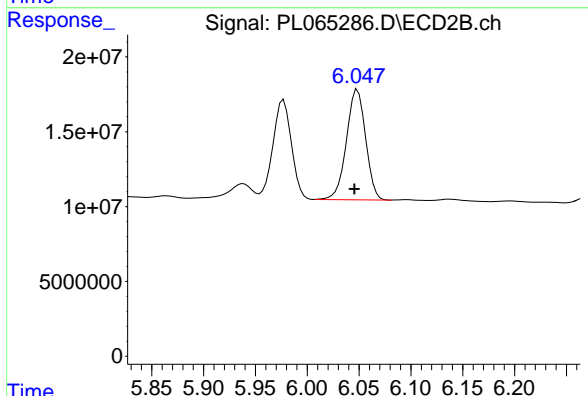


#25 Chlordane-3
 R.T.: 5.977 min
 Delta R.T.: 0.003 min
 Response: 82550286
 Conc: 201.97 ng/ml

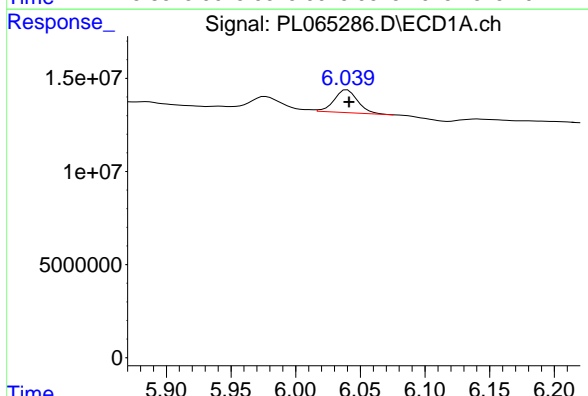


#26 Chlordane-4
 R.T.: 5.226 min
 Delta R.T.: -0.001 min
 Response: 47156479
 Conc: 173.33 ng/ml

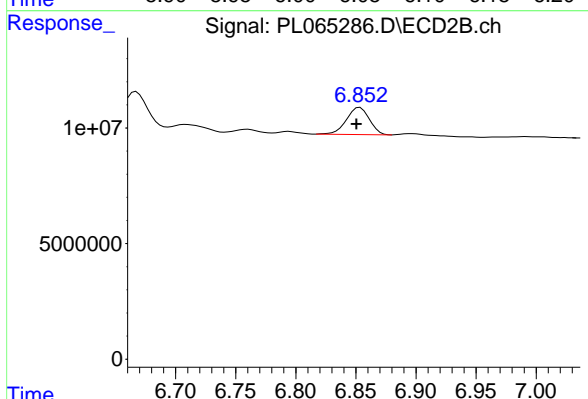
Instrument :
 ECD_L
 ClientSampleId :
 PB135087BS



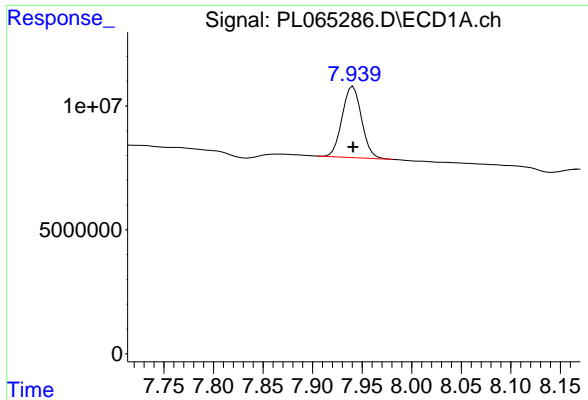
#26 Chlordane-4
 R.T.: 6.049 min
 Delta R.T.: 0.003 min
 Response: 95098280
 Conc: 200.58 ng/ml



#27 Chlordane-5
 R.T.: 6.040 min
 Delta R.T.: -0.001 min
 Response: 15138264
 Conc: 166.75 ng/ml



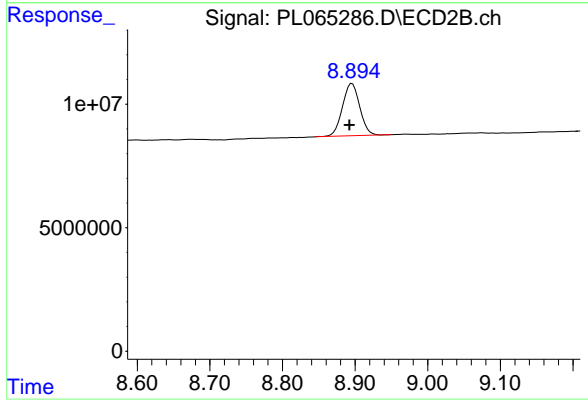
#27 Chlordane-5
 R.T.: 6.853 min
 Delta R.T.: 0.003 min
 Response: 15325217
 Conc: 193.20 ng/ml



#28 Decachlorobiphenyl

R.T.: 7.941 min
Delta R.T.: 0.000 min
Response: 39085421
Conc: 18.14 ng/ml

Instrument :
ECD_L
ClientSampleId :
PB135087BS



#28 Decachlorobiphenyl

R.T.: 8.896 min
Delta R.T.: 0.003 min
Response: 35049956
Conc: 19.08 ng/ml