

Data Path : Z:\pestpcbsrv\HPCHEM1\ECD_L\Data\PL031325\
 Data File : PL094692.D
 Signal(s) : Signal #1: ECD1A.ch Signal #2: ECD2B.ch
 Acq On : 13 Mar 2025 19:23
 Operator : AR\AJ
 Sample : Q1547-05MS
 Misc :
 ALS Vial : 26 Sample Multiplier: 1

Instrument :
 ECD_L
 ClientSampleId :
 OR-620-JB-COMP-01MS

Integration File signal 1: autoint1.e
 Integration File signal 2: autoint2.e
 Quant Time: Mar 14 11:39:02 2025
 Quant Method : Z:\pestpcbsrv\HPCHEM1\ECD_L\methods\PL031125.M
 Quant Title : GC Extractables
 QLast Update : Tue Mar 11 17:42:21 2025
 Response via : Initial Calibration
 Integrator: ChemStation

Volume Inj. : 1 µl
 Signal #1 Phase : ZB-MR2 Signal #2 Phase: ZB-MR2
 Signal #1 Info : 30M x 0.32mm x0.5 Signal #2 Info : 30M x 0.32mm x0.25µm

	Compound	RT#1	RT#2	Resp#1	Resp#2	ng/ml	ng/ml

System Monitoring Compounds							
1)	SA Tetrachlo...	3.535	2.770	55575394	69644504	19.633	19.512
28)	SA Decachlor...	9.048	7.902	57095148	98382478	27.092	24.356
Target Compounds							
2)	A alpha-BHC	3.991	3.272	208.9E6	326.4E6	50.302	60.546
3)	MA gamma-BHC...	4.323	3.601	201.3E6	304.3E6	50.438	59.211
4)	MA Heptachlor	4.911	3.939	187.3E6	267.2E6	48.245	50.724
5)	MB Aldrin	5.252	4.218	176.5E6	250.5E6	47.791	51.374
6)	B beta-BHC	4.523	3.902	91296434	120.8E6	49.477	54.374
7)	B delta-BHC	4.770	4.130	184.1E6	232.2E6	47.272	46.427
8)	B Heptachlo...	5.679	4.721	170.3E6	250.1E6	50.920	54.625
9)	A Endosulfan I	6.065	5.090	157.7E6	241.4E6	51.365	55.015
10)	B gamma-Chl...	5.936	4.971	169.5E6	258.9E6	50.297	53.617
11)	B alpha-Chl...	6.015	5.034	166.5E6	256.9E6	50.509	53.834
12)	B 4,4'-DDE	6.188	5.223	163.1E6	262.0E6	55.443	56.361
13)	MA Dieldrin	6.340	5.354	165.1E6	267.4E6	51.626	55.112
14)	MA Endrin	6.570	5.630	146.2E6	246.8E6	52.740	56.554
15)	B Endosulfa...	6.790	5.925	146.4E6	240.5E6	53.911	55.566
16)	A 4,4'-DDD	6.706	5.778	126.4E6	212.1E6	58.356	58.982
17)	MA 4,4'-DDT	7.020	6.028	136.0E6	232.4E6	57.179	57.626
18)	B Endrin al...	6.920	6.104	111.9E6	183.4E6	52.999	54.484
19)	B Endosulfa...	7.155	6.327	130.5E6	225.1E6	53.640	55.251
20)	A Methoxychlor	7.496	6.602	71954838	124.9E6	60.109	58.871
21)	B Endrin ke...	7.640	6.832	151.6E6	272.8E6	57.356	57.159
22)	Mirex	8.112	7.011	110.4E6	201.7E6	53.411	53.140
24)	Chlordane-2	5.252f	0.000	176.5E6	0	1166.215	N.D. #
25)	Chlordane-3	5.936	4.971	169.5E6	258.9E6	339.063	486.624 #
26)	Chlordane-4	6.015	5.034	166.5E6	256.9E6	282.671	493.575 #
27)	Chlordane-5	0.000	5.925	0	240.5E6	N.D.	1253.690 #

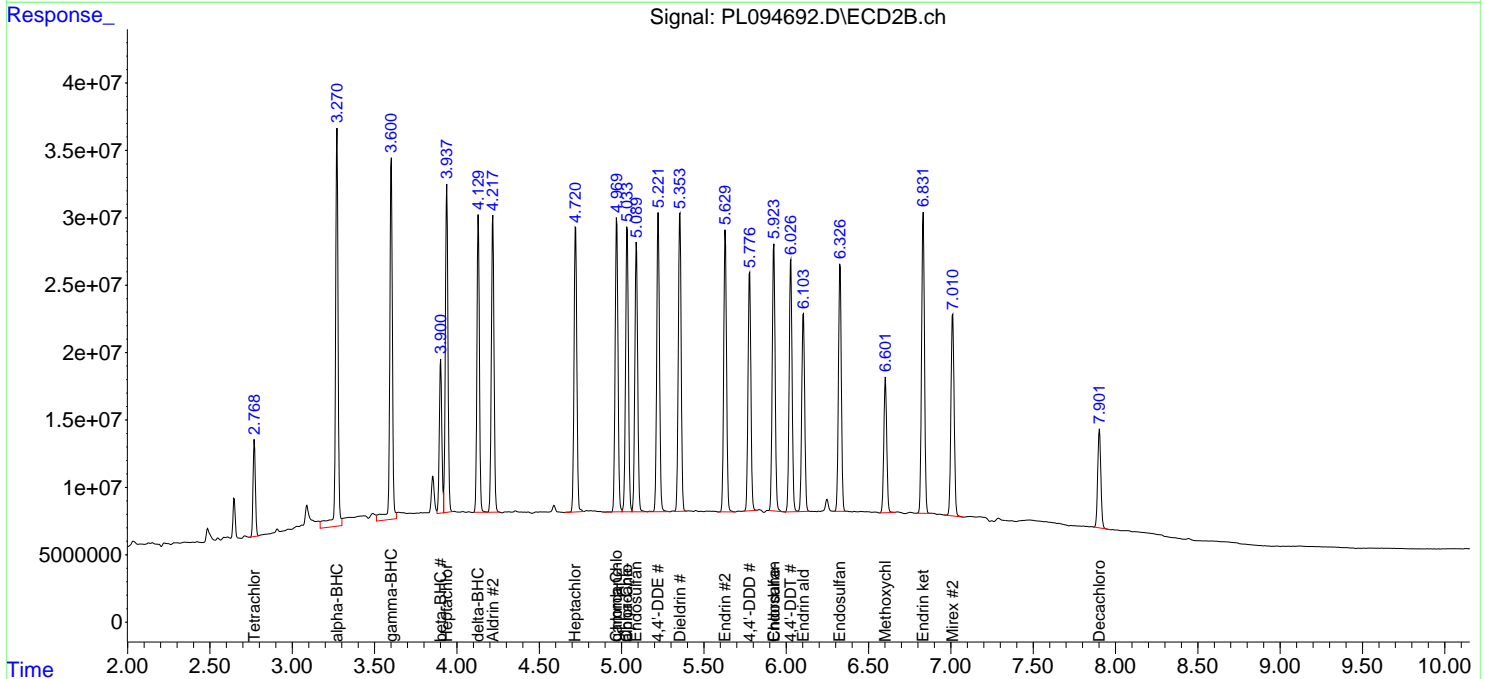
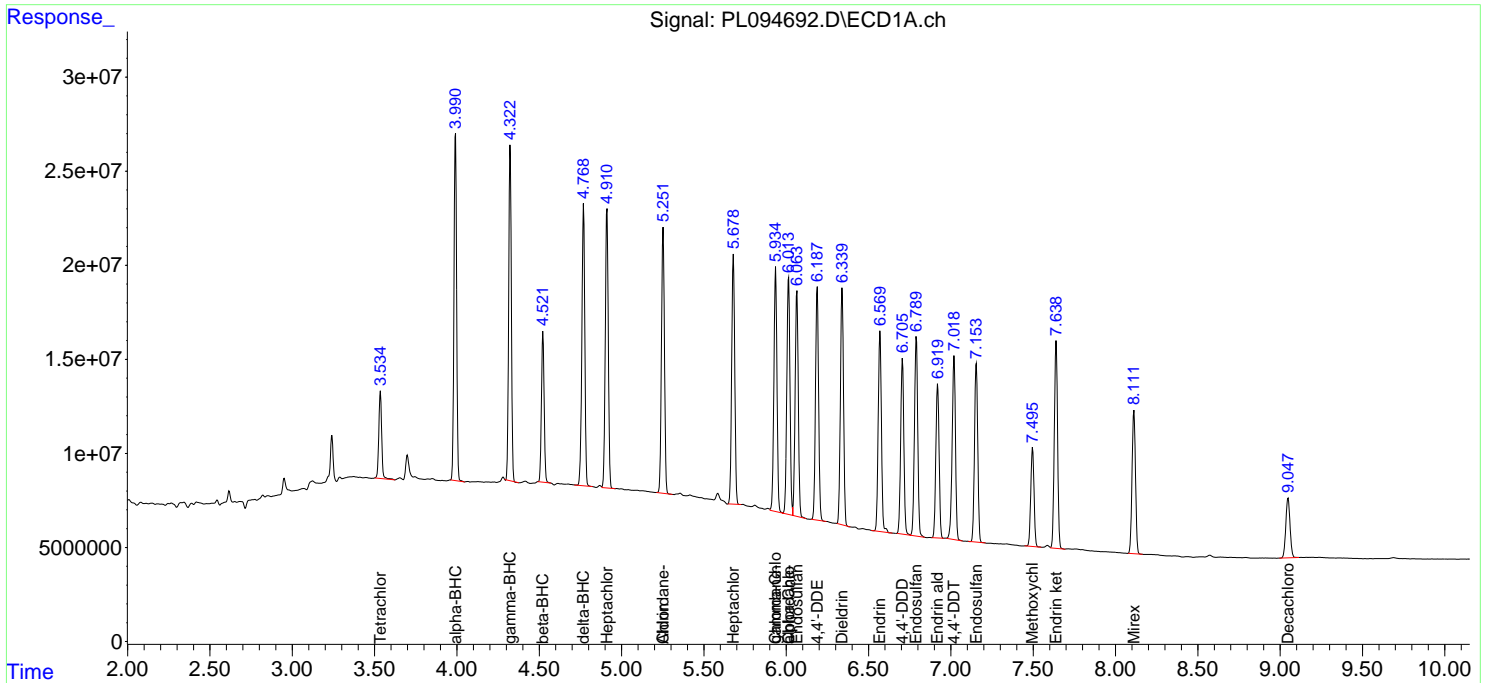
(f)=RT Delta > 1/2 Window (#)=Amounts differ by > 25% (m)=manual int.

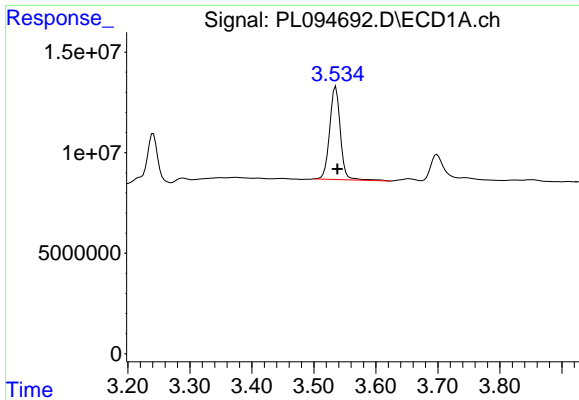
Data Path : Z:\pestpcbsrv\HPCHEM1\ECD_L\Data\PL031325\
 Data File : PL094692.D
 Signal(s) : Signal #1: ECD1A.ch Signal #2: ECD2B.ch
 Acq On : 13 Mar 2025 19:23
 Operator : AR\AJ
 Sample : Q1547-05MS
 Misc :
 ALS Vial : 26 Sample Multiplier: 1

Instrument :
 ECD_L
 ClientSampleId :
 OR-620-JB-COMP-01MS

Integration File signal 1: autoint1.e
 Integration File signal 2: autoint2.e
 Quant Time: Mar 14 11:39:02 2025
 Quant Method : Z:\pestpcbsrv\HPCHEM1\ECD_L\methods\PL031125.M
 Quant Title : GC Extractables
 QLast Update : Tue Mar 11 17:42:21 2025
 Response via : Initial Calibration
 Integrator: ChemStation

Volume Inj. : 1 µl
 Signal #1 Phase : ZB-MR1 Signal #2 Phase: ZB-MR2
 Signal #1 Info : 30M x 0.32mm x0.5 Signal #2 Info : 30M x 0.32mm x0.25µm

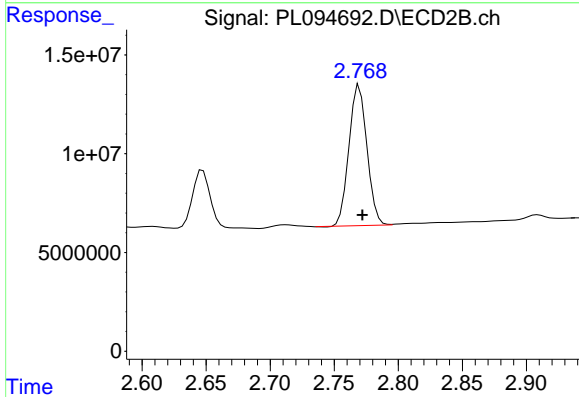




#1 Tetrachloro-m-xylene

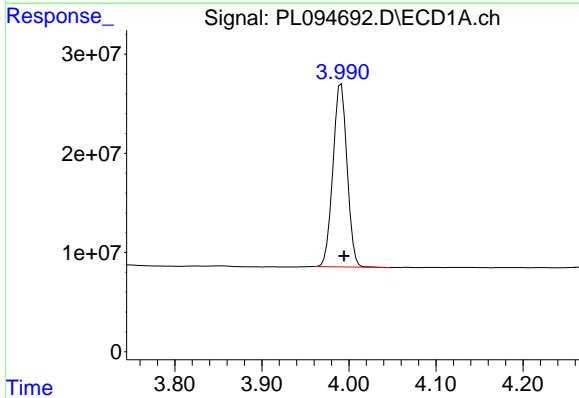
R.T.: 3.535 min
 Delta R.T.: -0.003 min
 Response: 55575394
 Conc: 19.63 ng/ml

Instrument :
 ECD_L
 ClientSampleId :
 OR-620-JB-COMP-01MS



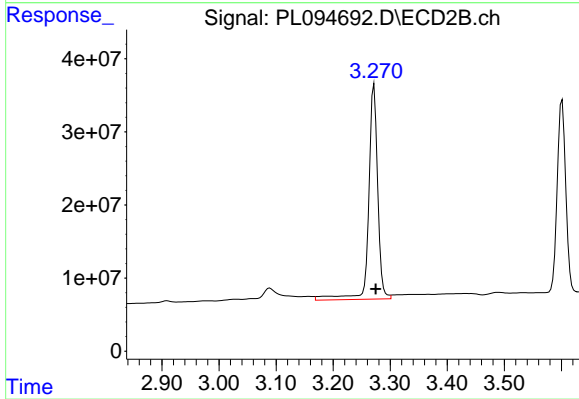
#1 Tetrachloro-m-xylene

R.T.: 2.770 min
 Delta R.T.: -0.002 min
 Response: 69644504
 Conc: 19.51 ng/ml



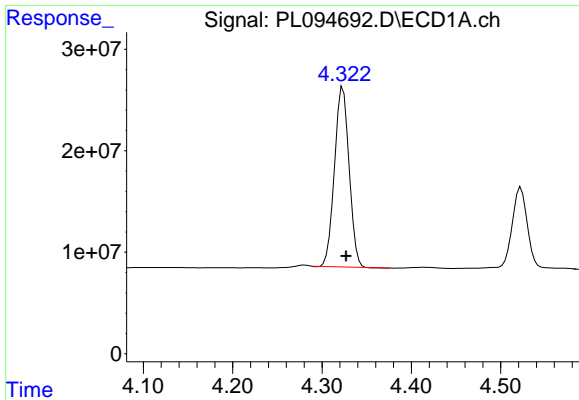
#2 alpha-BHC

R.T.: 3.991 min
 Delta R.T.: -0.003 min
 Response: 208870308
 Conc: 50.30 ng/ml



#2 alpha-BHC

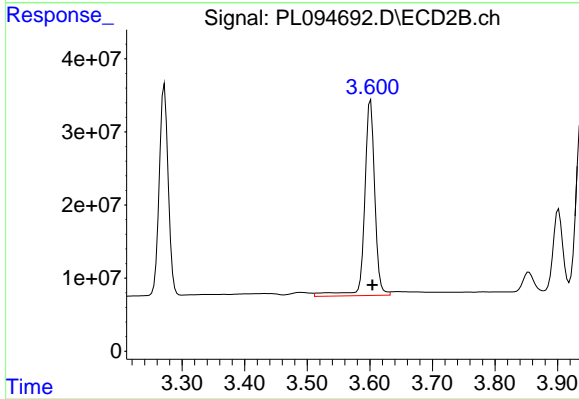
R.T.: 3.272 min
 Delta R.T.: -0.003 min
 Response: 326424715
 Conc: 60.55 ng/ml



#3 gamma-BHC (Lindane)

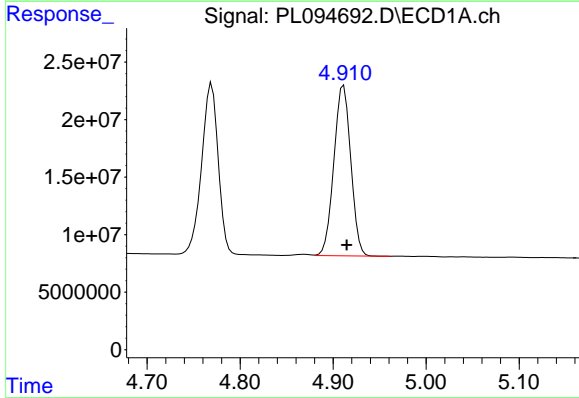
R.T.: 4.323 min
 Delta R.T.: -0.003 min
 Response: 201259441
 Conc: 50.44 ng/ml

Instrument :
 ECD_L
 ClientSampleId :
 OR-620-JB-COMP-01MS



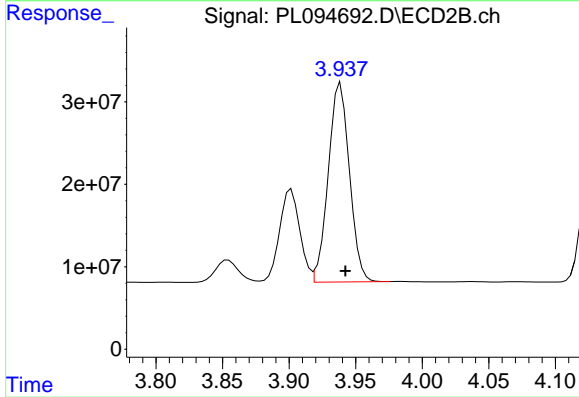
#3 gamma-BHC (Lindane)

R.T.: 3.601 min
 Delta R.T.: -0.003 min
 Response: 304313220
 Conc: 59.21 ng/ml



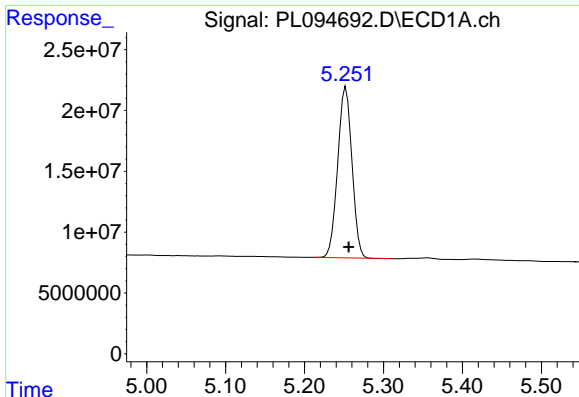
#4 Heptachlor

R.T.: 4.911 min
 Delta R.T.: -0.003 min
 Response: 187268734
 Conc: 48.24 ng/ml



#4 Heptachlor

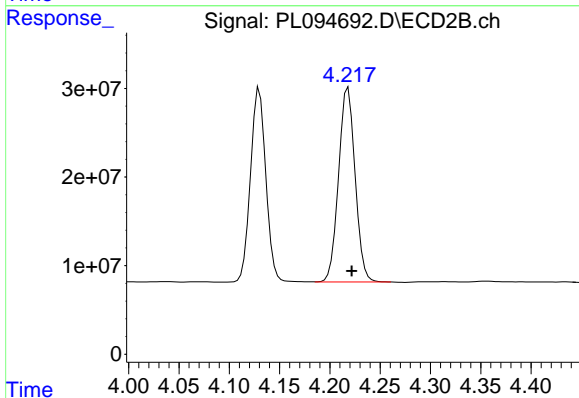
R.T.: 3.939 min
 Delta R.T.: -0.004 min
 Response: 267245679
 Conc: 50.72 ng/ml



#5 Aldrin

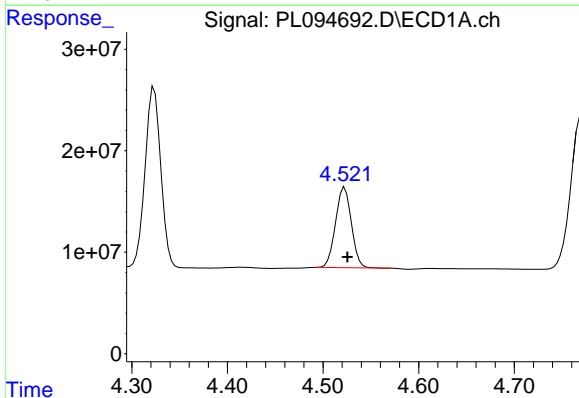
R.T.: 5.252 min
 Delta R.T.: -0.004 min
 Response: 176454363
 Conc: 47.79 ng/ml

Instrument :
 ECD_L
 ClientSampleId :
 OR-620-JB-COMP-01MS



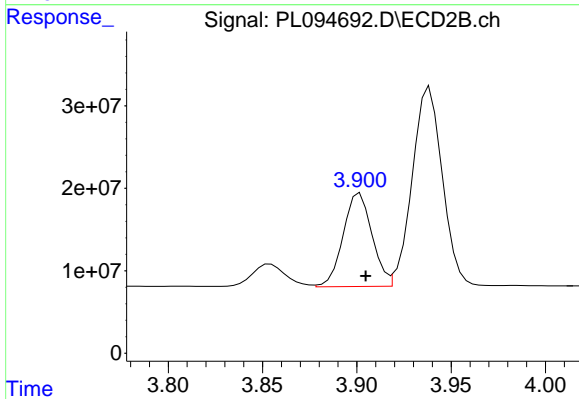
#5 Aldrin

R.T.: 4.218 min
 Delta R.T.: -0.003 min
 Response: 250518020
 Conc: 51.37 ng/ml



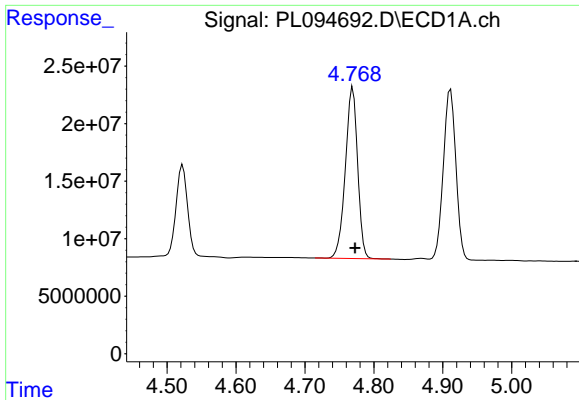
#6 beta-BHC

R.T.: 4.523 min
 Delta R.T.: -0.003 min
 Response: 91296434
 Conc: 49.48 ng/ml



#6 beta-BHC

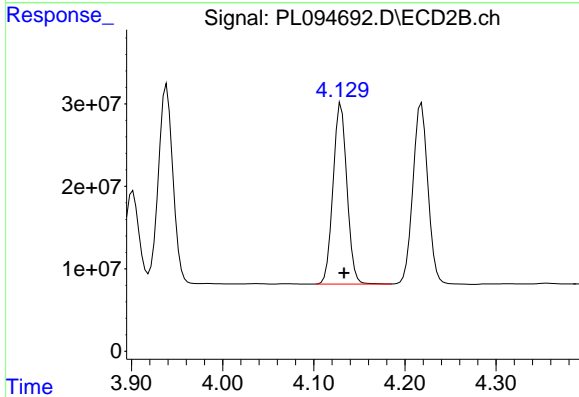
R.T.: 3.902 min
 Delta R.T.: -0.003 min
 Response: 120779713
 Conc: 54.37 ng/ml



#7 delta-BHC

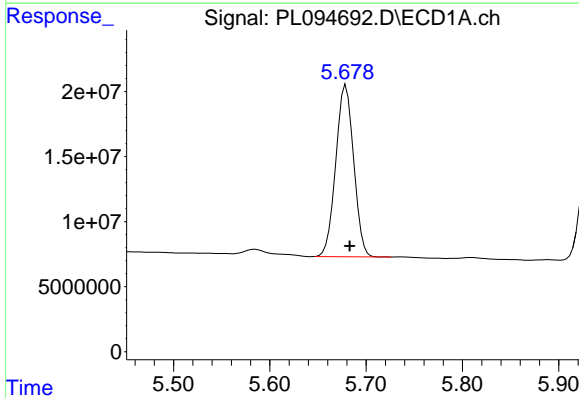
R.T.: 4.770 min
 Delta R.T.: -0.003 min
 Response: 184091766
 Conc: 47.27 ng/ml

Instrument :
 ECD_L
 ClientSampleId :
 OR-620-JB-COMP-01MS



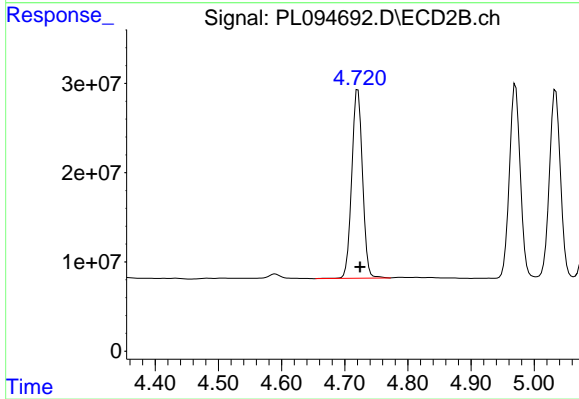
#7 delta-BHC

R.T.: 4.130 min
 Delta R.T.: -0.003 min
 Response: 232226729
 Conc: 46.43 ng/ml



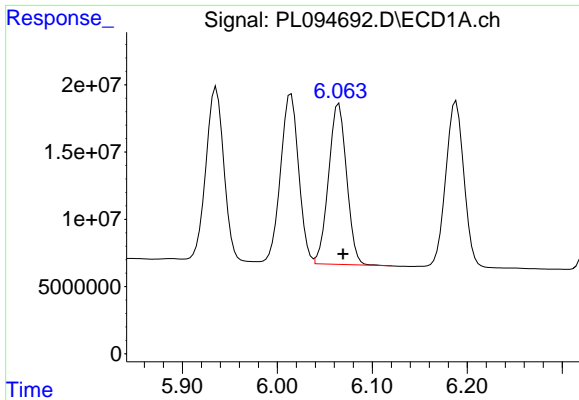
#8 Heptachlor epoxide

R.T.: 5.679 min
 Delta R.T.: -0.004 min
 Response: 170336237
 Conc: 50.92 ng/ml



#8 Heptachlor epoxide

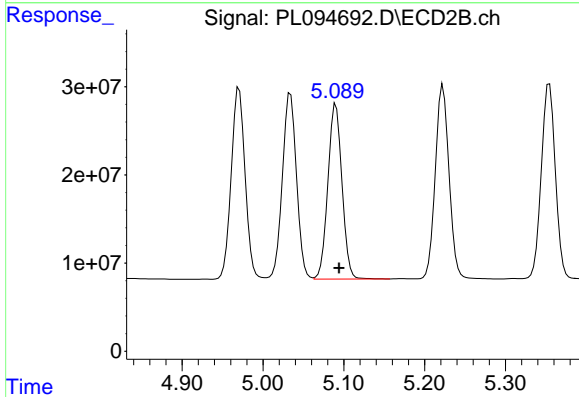
R.T.: 4.721 min
 Delta R.T.: -0.004 min
 Response: 250105802
 Conc: 54.63 ng/ml



#9 Endosulfan I

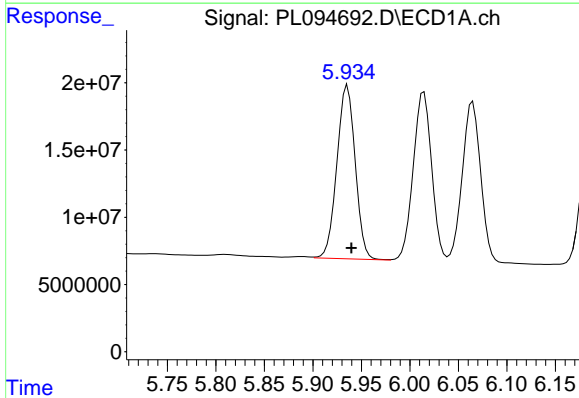
R.T.: 6.065 min
 Delta R.T.: -0.004 min
 Response: 157701306
 Conc: 51.37 ng/ml

Instrument :
 ECD_L
 ClientSampleId :
 OR-620-JB-COMP-01MS



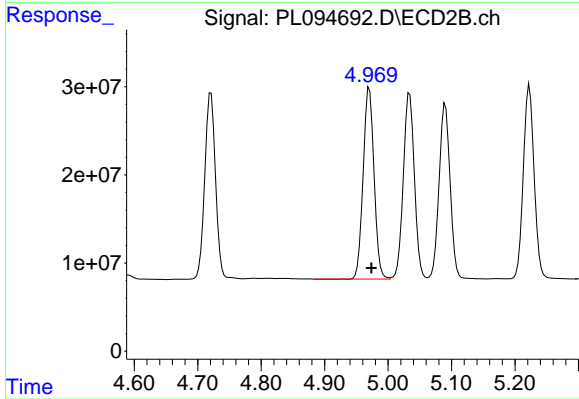
#9 Endosulfan I

R.T.: 5.090 min
 Delta R.T.: -0.004 min
 Response: 241447509
 Conc: 55.02 ng/ml



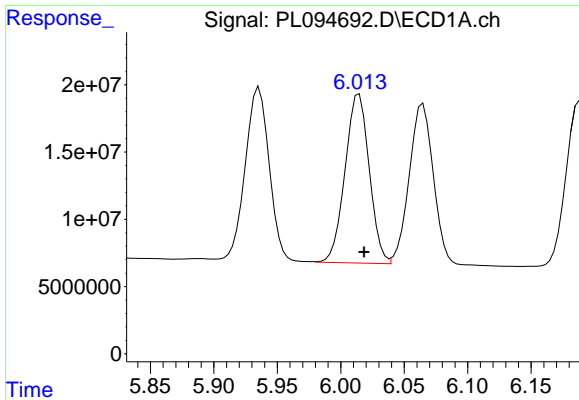
#10 gamma-Chlordane

R.T.: 5.936 min
 Delta R.T.: -0.004 min
 Response: 169470718
 Conc: 50.30 ng/ml



#10 gamma-Chlordane

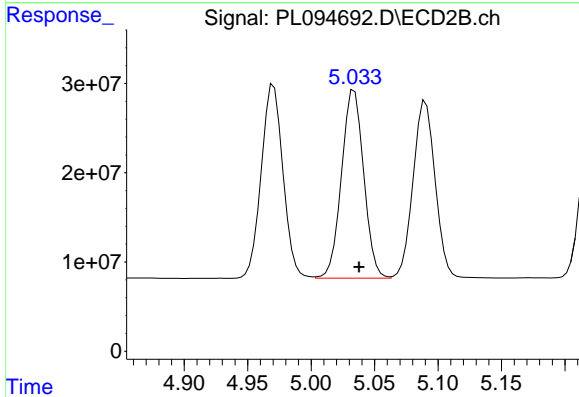
R.T.: 4.971 min
 Delta R.T.: -0.003 min
 Response: 258883164
 Conc: 53.62 ng/ml



#11 alpha-Chlordane

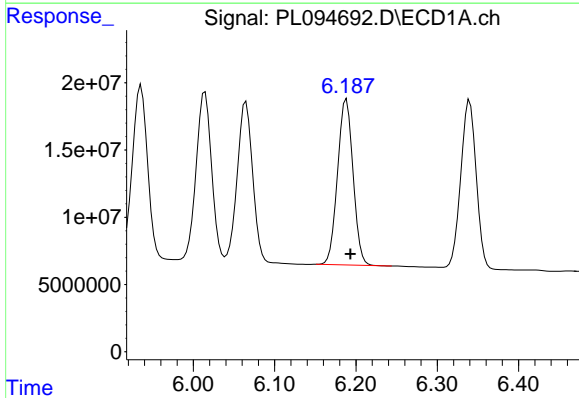
R.T.: 6.015 min
Delta R.T.: -0.004 min
Response: 166519423
Conc: 50.51 ng/ml

Instrument :
ECD_L
ClientSampleId :
OR-620-JB-COMP-01MS



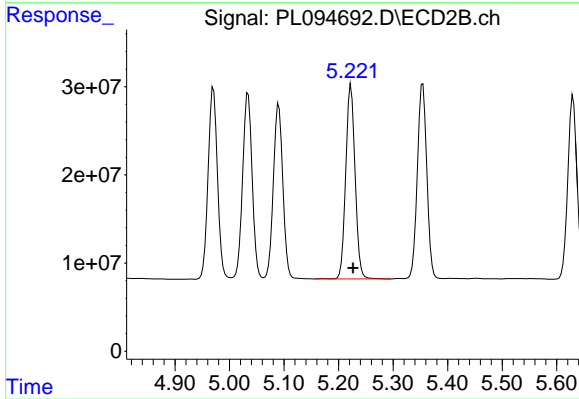
#11 alpha-Chlordane

R.T.: 5.034 min
Delta R.T.: -0.004 min
Response: 256935313
Conc: 53.83 ng/ml



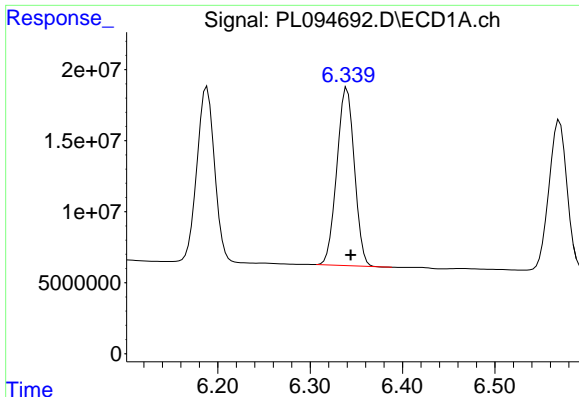
#12 4,4'-DDE

R.T.: 6.188 min
Delta R.T.: -0.005 min
Response: 163115902
Conc: 55.44 ng/ml



#12 4,4'-DDE

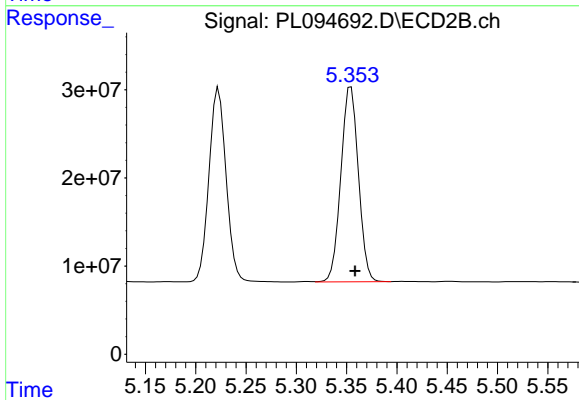
R.T.: 5.223 min
Delta R.T.: -0.004 min
Response: 261997700
Conc: 56.36 ng/ml



#13 Dieldrin

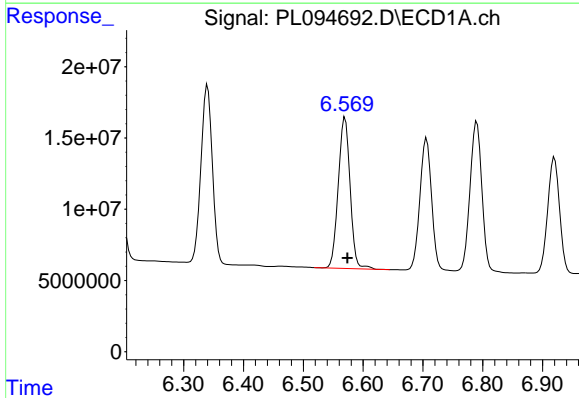
R.T.: 6.340 min
 Delta R.T.: -0.004 min
 Response: 165106694
 Conc: 51.63 ng/ml

Instrument :
 ECD_L
 ClientSampleId :
 OR-620-JB-COMP-01MS



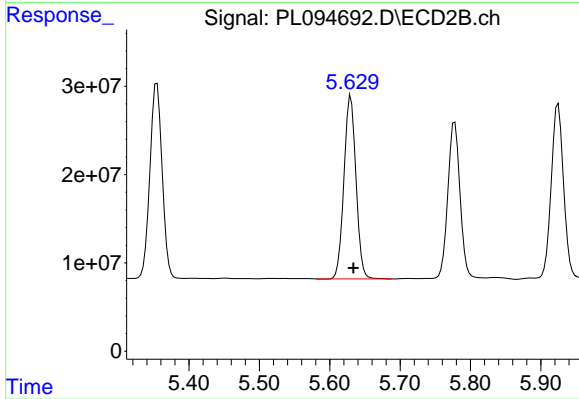
#13 Dieldrin

R.T.: 5.354 min
 Delta R.T.: -0.004 min
 Response: 267391144
 Conc: 55.11 ng/ml



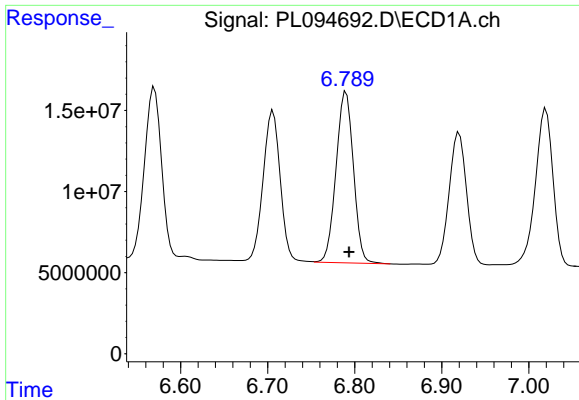
#14 Endrin

R.T.: 6.570 min
 Delta R.T.: -0.004 min
 Response: 146199038
 Conc: 52.74 ng/ml



#14 Endrin

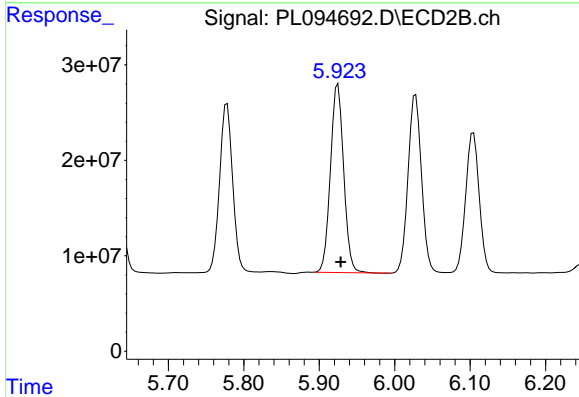
R.T.: 5.630 min
 Delta R.T.: -0.004 min
 Response: 246783590
 Conc: 56.55 ng/ml



#15 Endosulfan II

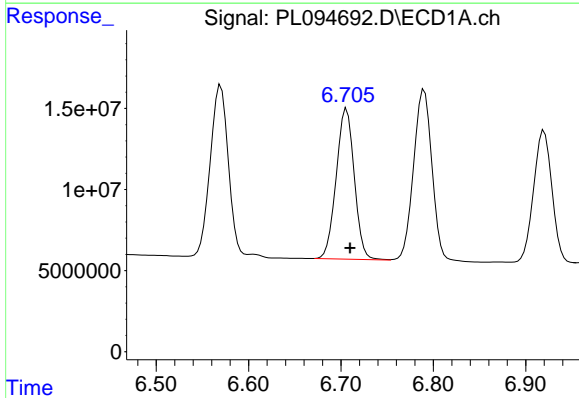
R.T.: 6.790 min
 Delta R.T.: -0.004 min
 Response: 146355530
 Conc: 53.91 ng/ml

Instrument :
 ECD_L
 ClientSampleId :
 OR-620-JB-COMP-01MS



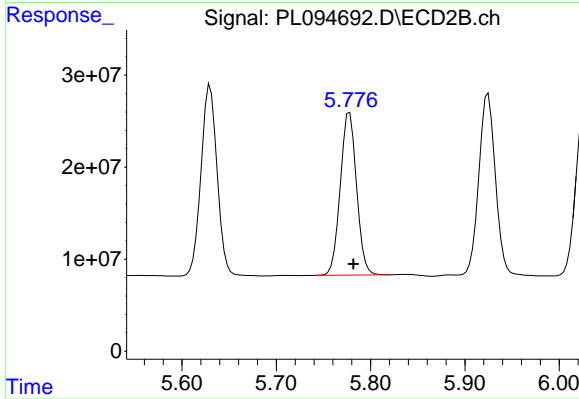
#15 Endosulfan II

R.T.: 5.925 min
 Delta R.T.: -0.004 min
 Response: 240502870
 Conc: 55.57 ng/ml



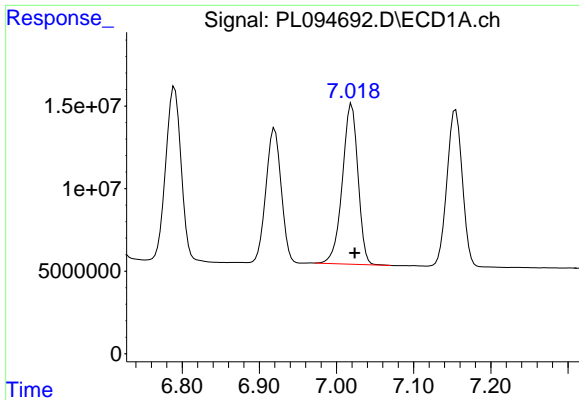
#16 4,4'-DDD

R.T.: 6.706 min
 Delta R.T.: -0.004 min
 Response: 126404082
 Conc: 58.36 ng/ml



#16 4,4'-DDD

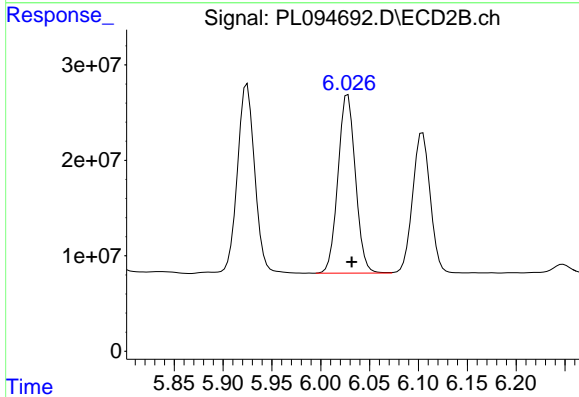
R.T.: 5.778 min
 Delta R.T.: -0.004 min
 Response: 212093425
 Conc: 58.98 ng/ml



#17 4,4'-DDT

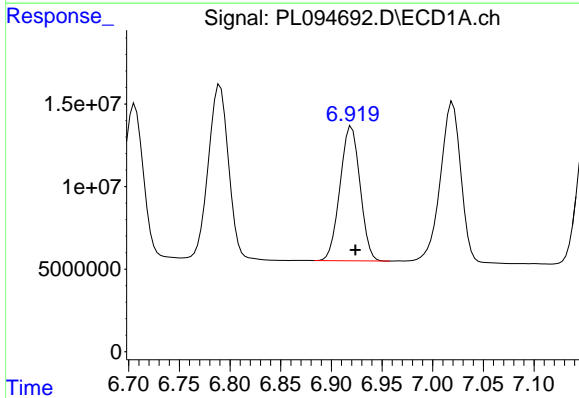
R.T.: 7.020 min
Delta R.T.: -0.004 min
Response: 136002638
Conc: 57.18 ng/ml

Instrument :
ECD_L
ClientSampleId :
OR-620-JB-COMP-01MS



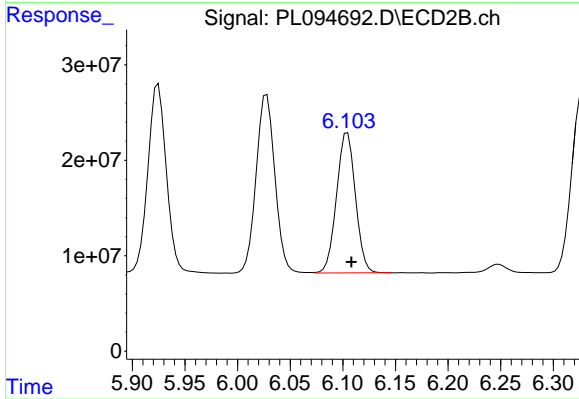
#17 4,4'-DDT

R.T.: 6.028 min
Delta R.T.: -0.004 min
Response: 232352305
Conc: 57.63 ng/ml



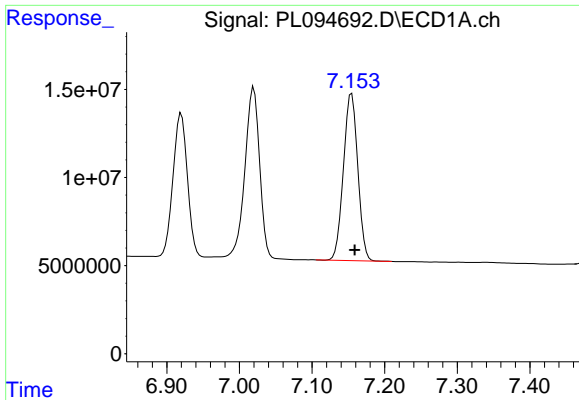
#18 Endrin aldehyde

R.T.: 6.920 min
Delta R.T.: -0.004 min
Response: 111880938
Conc: 53.00 ng/ml



#18 Endrin aldehyde

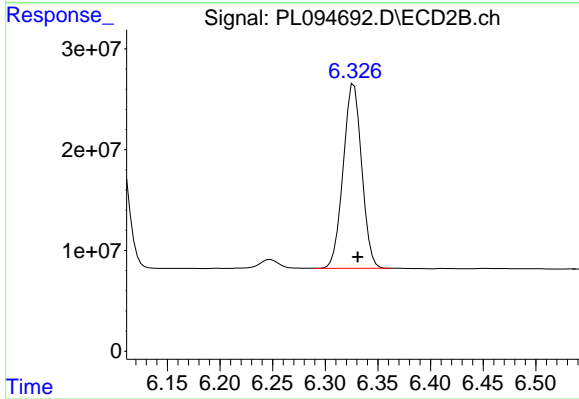
R.T.: 6.104 min
Delta R.T.: -0.004 min
Response: 183357825
Conc: 54.48 ng/ml



#19 Endosulfan Sulfate

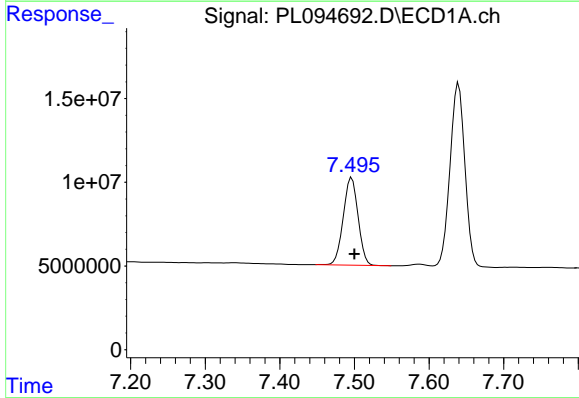
R.T.: 7.155 min
 Delta R.T.: -0.004 min
 Response: 130453087
 Conc: 53.64 ng/ml

Instrument :
 ECD_L
 ClientSampleId :
 OR-620-JB-COMP-01MS



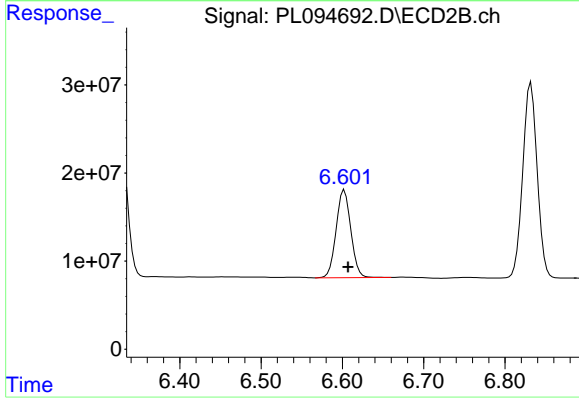
#19 Endosulfan Sulfate

R.T.: 6.327 min
 Delta R.T.: -0.003 min
 Response: 225060257
 Conc: 55.25 ng/ml



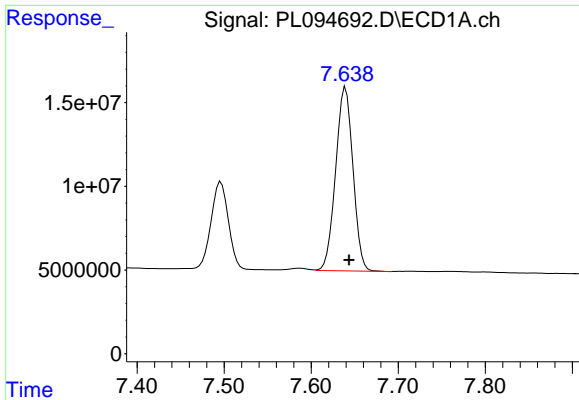
#20 Methoxychlor

R.T.: 7.496 min
 Delta R.T.: -0.003 min
 Response: 71954838
 Conc: 60.11 ng/ml



#20 Methoxychlor

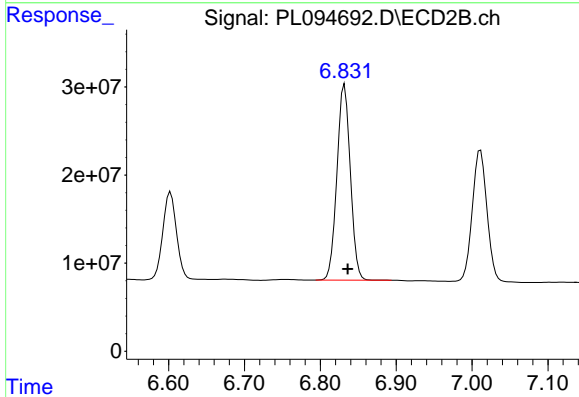
R.T.: 6.602 min
 Delta R.T.: -0.004 min
 Response: 124869532
 Conc: 58.87 ng/ml



#21 Endrin ketone

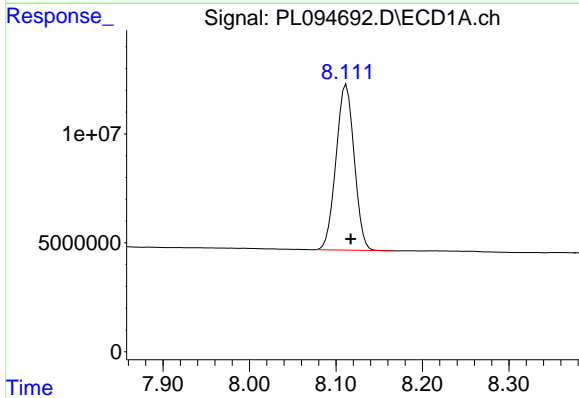
R.T.: 7.640 min
 Delta R.T.: -0.004 min
 Response: 151606114
 Conc: 57.36 ng/ml

Instrument :
 ECD_L
 ClientSampleId :
 OR-620-JB-COMP-01MS



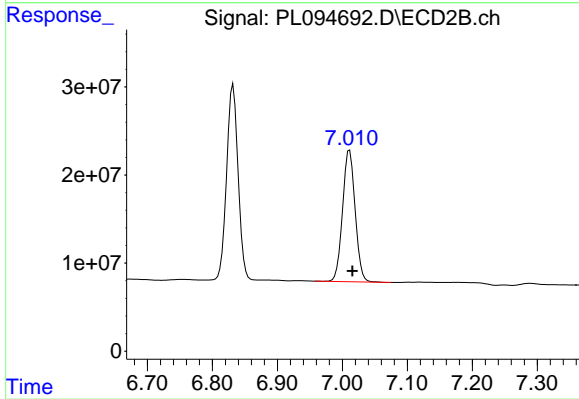
#21 Endrin ketone

R.T.: 6.832 min
 Delta R.T.: -0.004 min
 Response: 272795229
 Conc: 57.16 ng/ml



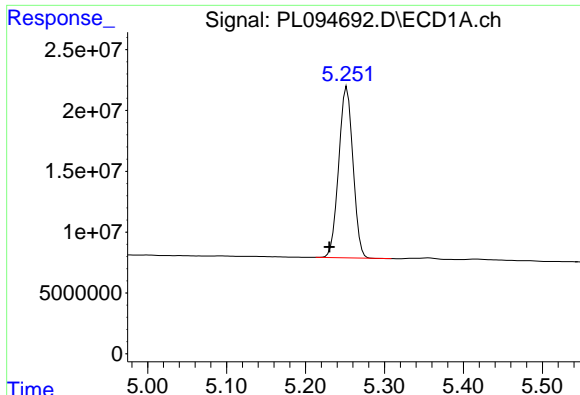
#22 Mirex

R.T.: 8.112 min
 Delta R.T.: -0.005 min
 Response: 110363362
 Conc: 53.41 ng/ml



#22 Mirex

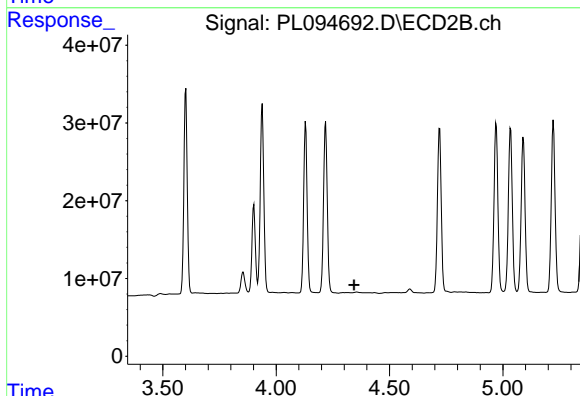
R.T.: 7.011 min
 Delta R.T.: -0.005 min
 Response: 201684156
 Conc: 53.14 ng/ml



#24 Chlordane-2

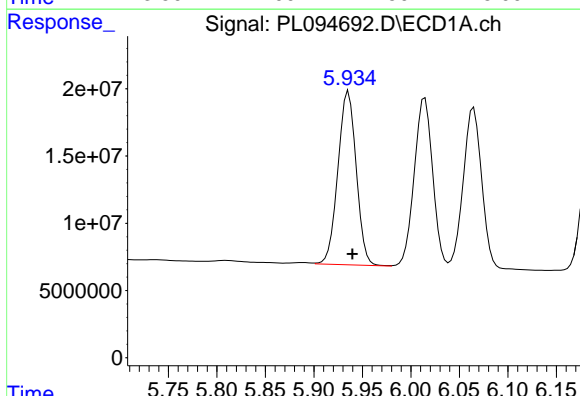
R.T.: 5.252 min
 Delta R.T.: 0.022 min
 Response: 176454363
 Conc: 1166.21 ng/m

Instrument :
 ECD_L
 ClientSampleId :
 OR-620-JB-COMP-01MS



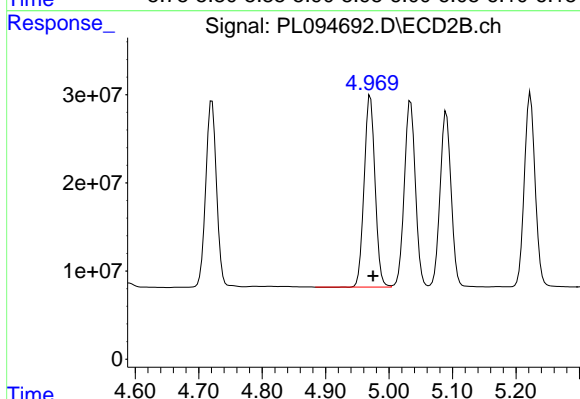
#24 Chlordane-2

R.T.: 0.000 min
 Exp R.T. : 4.344 min
 Response: 0
 Conc: N.D.



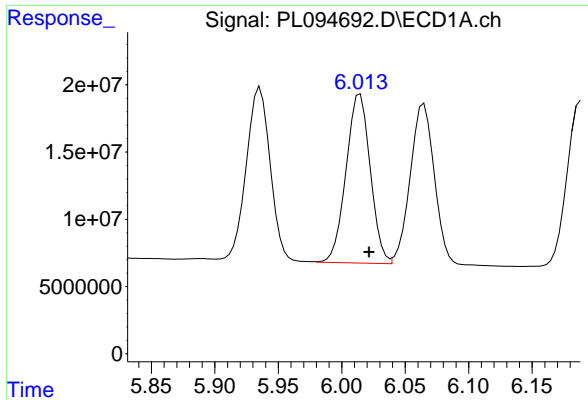
#25 Chlordane-3

R.T.: 5.936 min
 Delta R.T.: -0.004 min
 Response: 169470718
 Conc: 339.06 ng/ml



#25 Chlordane-3

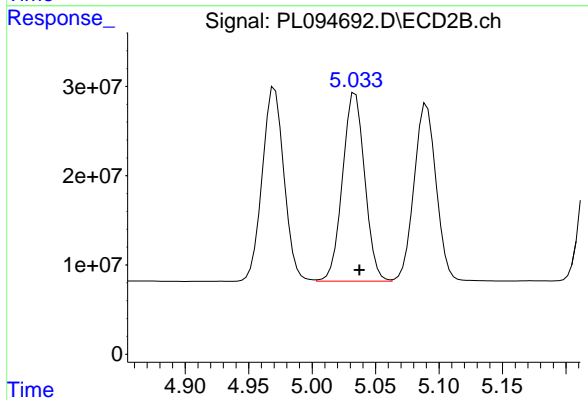
R.T.: 4.971 min
 Delta R.T.: -0.004 min
 Response: 258883164
 Conc: 486.62 ng/ml



#26 Chlordane-4

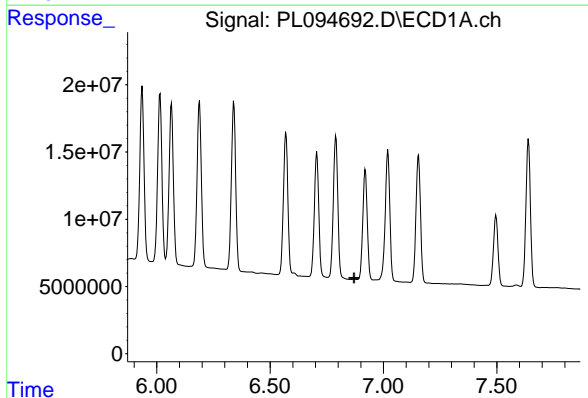
R.T.: 6.015 min
 Delta R.T.: -0.007 min
 Response: 166519423
 Conc: 282.67 ng/ml

Instrument :
 ECD_L
 ClientSampleId :
 OR-620-JB-COMP-01MS



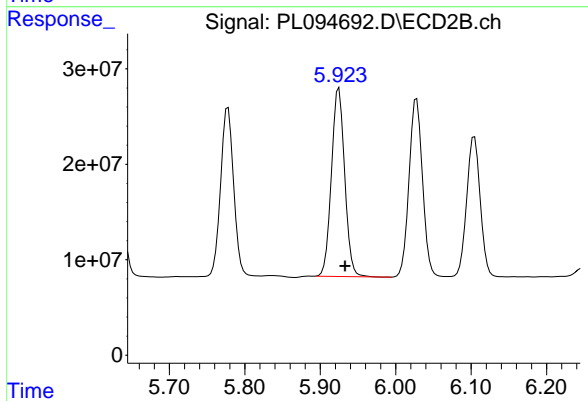
#26 Chlordane-4

R.T.: 5.034 min
 Delta R.T.: -0.003 min
 Response: 256935313
 Conc: 493.57 ng/ml



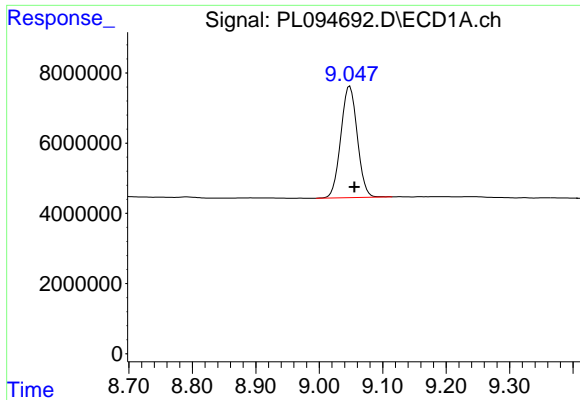
#27 Chlordane-5

R.T.: 0.000 min
 Exp R.T. : 6.871 min
 Response: 0
 Conc: N.D.



#27 Chlordane-5

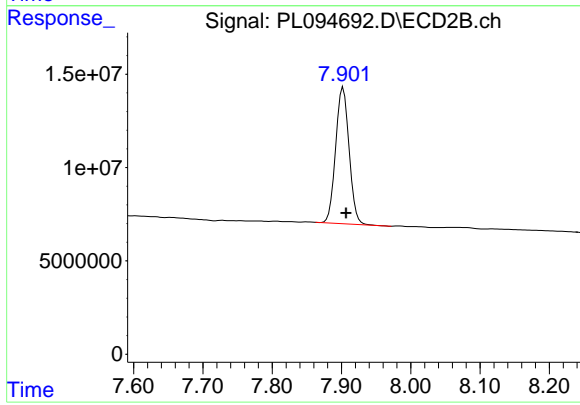
R.T.: 5.925 min
 Delta R.T.: -0.008 min
 Response: 240502870
 Conc: 1253.69 ng/ml



#28 Decachlorobiphenyl

R.T.: 9.048 min
Delta R.T.: -0.007 min
Response: 57095148
Conc: 27.09 ng/ml

Instrument :
ECD_L
ClientSampleId :
OR-620-JB-COMP-01MS



#28 Decachlorobiphenyl

R.T.: 7.902 min
Delta R.T.: -0.004 min
Response: 98382478
Conc: 24.36 ng/ml