

Data Path : Z:\pestpcbsrv\HPCHEM1\ECD_L\Data\PL031325\
 Data File : PL094676.D
 Signal(s) : Signal #1: ECD1A.ch Signal #2: ECD2B.ch
 Acq On : 13 Mar 2025 15:12
 Operator : AR\AJ
 Sample : I.BLK
 Misc :
 ALS Vial : 2 Sample Multiplier: 1

Instrument :
 ECD_L
 ClientSampleId :
 I.BLK

Integration File signal 1: autoint1.e
 Integration File signal 2: autoint2.e
 Quant Time: Mar 13 15:31:10 2025
 Quant Method : Z:\pestpcbsrv\HPCHEM1\ECD_L\methods\PL031125.M
 Quant Title : GC Extractables
 QLast Update : Tue Mar 11 17:42:21 2025
 Response via : Initial Calibration
 Integrator: ChemStation

Volume Inj. : 1 µl
 Signal #1 Phase : ZB-MR1 Signal #2 Phase: ZB-MR2
 Signal #1 Info : 30M x 0.32mm x0.5 Signal #2 Info : 30M x 0.32mm x0.25µm

Compound	RT#1	RT#2	Resp#1	Resp#2	ng/ml	ng/ml

System Monitoring Compounds						
1) SA Tetrachlo...	3.538	2.770	51518911	67413436	18.200	18.887
28) SA Decachlor...	9.053	7.904	48575825	84800484	23.050	20.994

Target Compounds

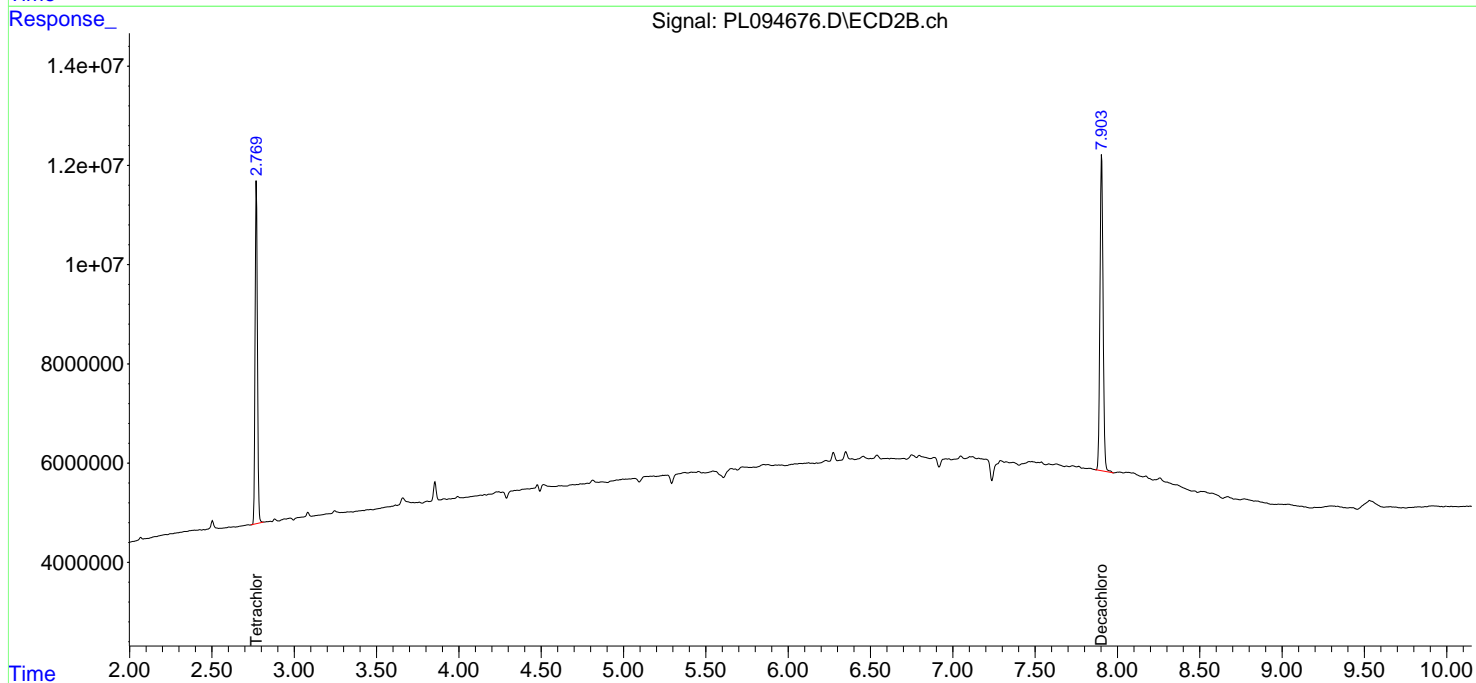
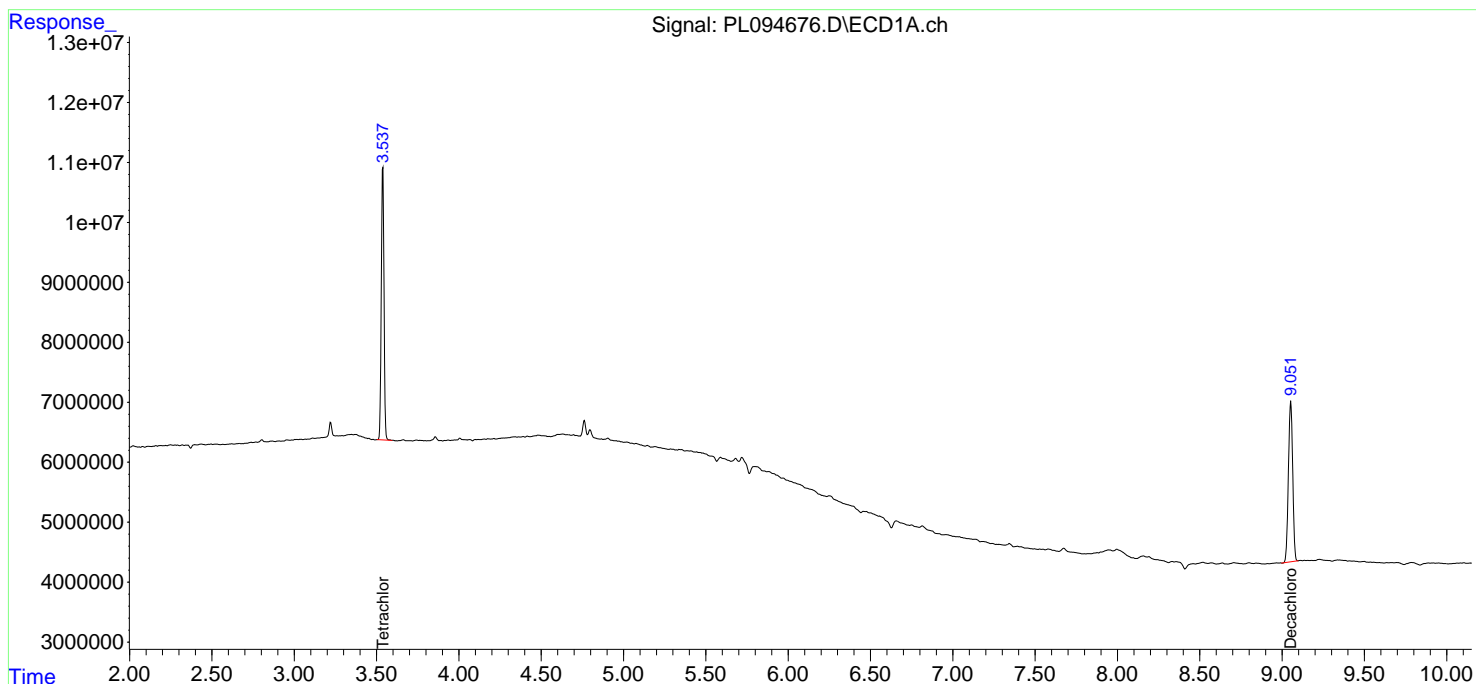
 (f)=RT Delta > 1/2 Window (#)=Amounts differ by > 25% (m)=manual int.

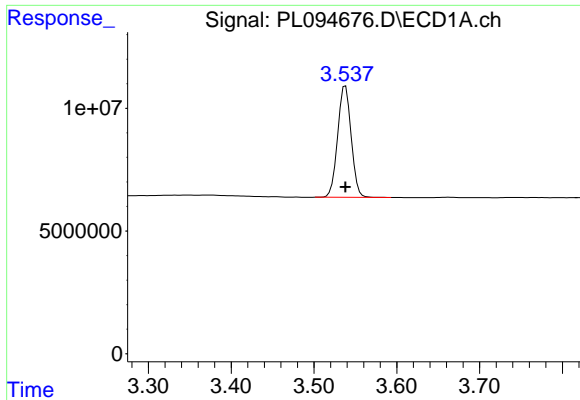
Data Path : Z:\pestpcbsrv\HPCHEM1\ECD_L\Data\PL031325\
 Data File : PL094676.D
 Signal(s) : Signal #1: ECD1A.ch Signal #2: ECD2B.ch
 Acq On : 13 Mar 2025 15:12
 Operator : AR\AJ
 Sample : I.BLK
 Misc :
 ALS Vial : 2 Sample Multiplier: 1

Instrument :
 ECD_L
 ClientSampleId :
 I.BLK

Integration File signal 1: autoint1.e
 Integration File signal 2: autoint2.e
 Quant Time: Mar 13 15:31:10 2025
 Quant Method : Z:\pestpcbsrv\HPCHEM1\ECD_L\methods\PL031125.M
 Quant Title : GC Extractables
 QLast Update : Tue Mar 11 17:42:21 2025
 Response via : Initial Calibration
 Integrator: ChemStation

Volume Inj. : 1 µl
 Signal #1 Phase : ZB-MR1 Signal #2 Phase: ZB-MR2
 Signal #1 Info : 30M x 0.32mm x0.5 Signal #2 Info : 30M x 0.32mm x0.25µm

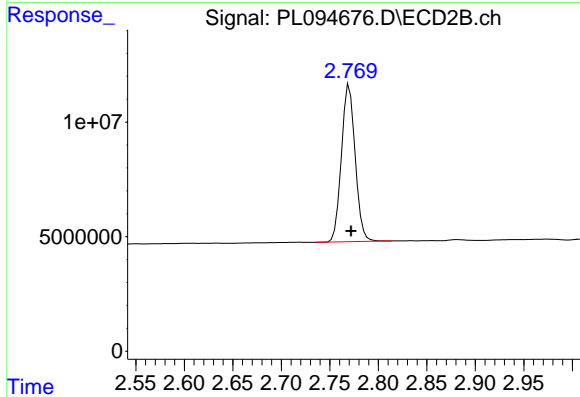




#1 Tetrachloro-m-xylene

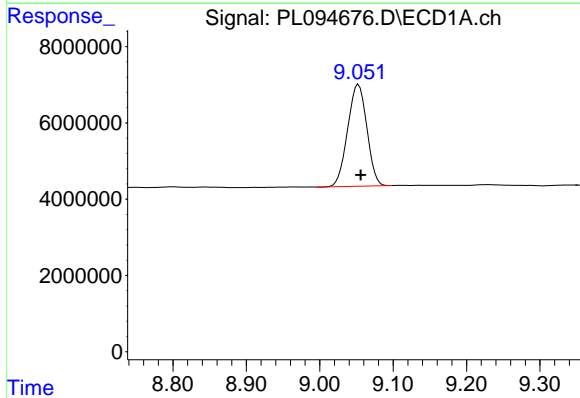
R.T.: 3.538 min
 Delta R.T.: 0.000 min
 Response: 51518911
 Conc: 18.20 ng/ml

Instrument :
 ECD_L
 ClientSampleId :
 I.BLK



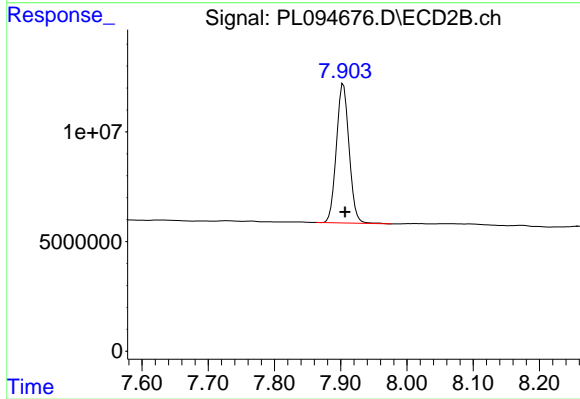
#1 Tetrachloro-m-xylene

R.T.: 2.770 min
 Delta R.T.: -0.002 min
 Response: 67413436
 Conc: 18.89 ng/ml



#28 Decachlorobiphenyl

R.T.: 9.053 min
 Delta R.T.: -0.003 min
 Response: 48575825
 Conc: 23.05 ng/ml



#28 Decachlorobiphenyl

R.T.: 7.904 min
 Delta R.T.: -0.003 min
 Response: 84800484
 Conc: 20.99 ng/ml