

Data Path : Z:\pestpcbsrv\HPCHEM1\ECD_L\Data\PL031325\
 Data File : PL094692.D
 Signal(s) : Signal #1: ECD1A.ch Signal #2: ECD2B.ch
 Acq On : 13 Mar 2025 19:23
 Operator : AR\AJ
 Sample : Q1547-05MS
 Misc :
 ALS Vial : 26 Sample Multiplier: 1

Instrument :
 ECD_L
ClientSampleId :
 OR-620-JB-COMP-01MS

Manual Integrations
APPROVED

Reviewed By :Yogesh Patel 03/14/2025
 Supervised By :mohammad ahmed 03/18/2025

Integration File signal 1: autoint1.e
 Integration File signal 2: autoint2.e
 Quant Time: Mar 14 11:57:23 2025
 Quant Method : Z:\pestpcbsrv\HPCHEM1\ECD_L\methods\PL031125.M
 Quant Title : GC Extractables
 QLast Update : Tue Mar 11 17:42:21 2025
 Response via : Initial Calibration
 Integrator: ChemStation

Volume Inj. : 1 µl
 Signal #1 Phase : ZB-MR1 Signal #2 Phase: ZB-MR2
 Signal #1 Info : 30M x 0.32mm x0.5 Signal #2 Info : 30M x 0.32mm x0.25µm

Compound	RT#1	RT#2	Resp#1	Resp#2	ng/ml	ng/ml

System Monitoring Compounds						
1) SA Tetrachlo...	3.534	2.770	54446935	69644504	19.235m	19.512
2) SA Decachlor...	9.048	7.902	57095148	98382478	27.092	24.356
Target Compounds						
2) A alpha-BHC	3.991	3.270	208.9E6	285.9E6	50.302	53.037m
3) MA gamma-BHC...	4.323	3.600	201.3E6	274.3E6	50.438	53.378m
4) MA Heptachlor	4.911	3.939	187.3E6	267.2E6	48.245	50.724
5) MB Aldrin	5.252	4.218	176.5E6	250.5E6	47.791	51.374
6) B beta-BHC	4.523	3.902	91296434	120.8E6	49.477	54.374
7) B delta-BHC	4.770	4.130	184.1E6	232.2E6	47.272	46.427
8) B Heptachlo...	5.679	4.721	170.3E6	250.1E6	50.920	54.625
9) A Endosulfan I	6.065	5.090	157.7E6	241.4E6	51.365	55.015
10) B gamma-Chl...	5.936	4.971	169.5E6	258.9E6	50.297	53.617
11) B alpha-Chl...	6.015	5.034	166.5E6	256.9E6	50.509	53.834
12) B 4,4'-DDE	6.188	5.223	163.1E6	262.0E6	55.443	56.361
13) MA Dieldrin	6.340	5.354	165.1E6	267.4E6	51.626	55.112
14) MA Endrin	6.570	5.630	146.2E6	246.8E6	52.740	56.554
15) B Endosulfa...	6.790	5.925	146.4E6	240.5E6	53.911	55.566
16) A 4,4'-DDD	6.706	5.778	126.4E6	212.1E6	58.356	58.982
17) MA 4,4'-DDT	7.020	6.028	136.0E6	232.4E6	57.179	57.626
18) B Endrin al...	6.920	6.104	111.9E6	183.4E6	52.999	54.484
19) B Endosulfa...	7.155	6.327	130.5E6	225.1E6	53.640	55.251
20) A Methoxychlor	7.496	6.602	71954838	124.9E6	60.109	58.871
21) B Endrin ke...	7.640	6.832	151.6E6	272.8E6	57.356	57.159
22) Mirex	8.112	7.011	110.4E6	201.7E6	53.411	53.140

(f)=RT Delta > 1/2 Window (#)=Amounts differ by > 25% (m)=manual int.

Data Path : Z:\pestpcbsrv\HPCHEM1\ECD_L\Data\PL031325\
 Data File : PL094692.D
 Signal(s) : Signal #1: ECD1A.ch Signal #2: ECD2B.ch
 Acq On : 13 Mar 2025 19:23
 Operator : AR\AJ
 Sample : Q1547-05MS
 Misc :
 ALS Vial : 26 Sample Multiplier: 1

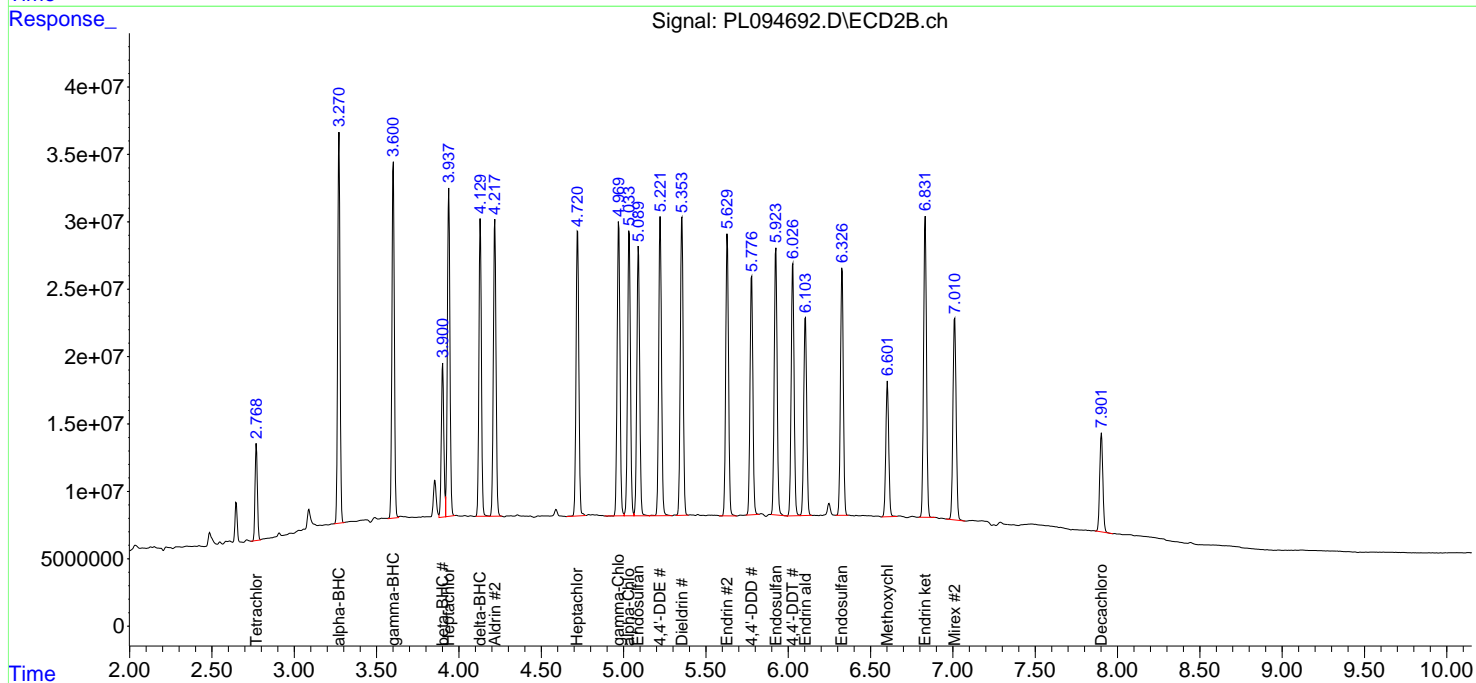
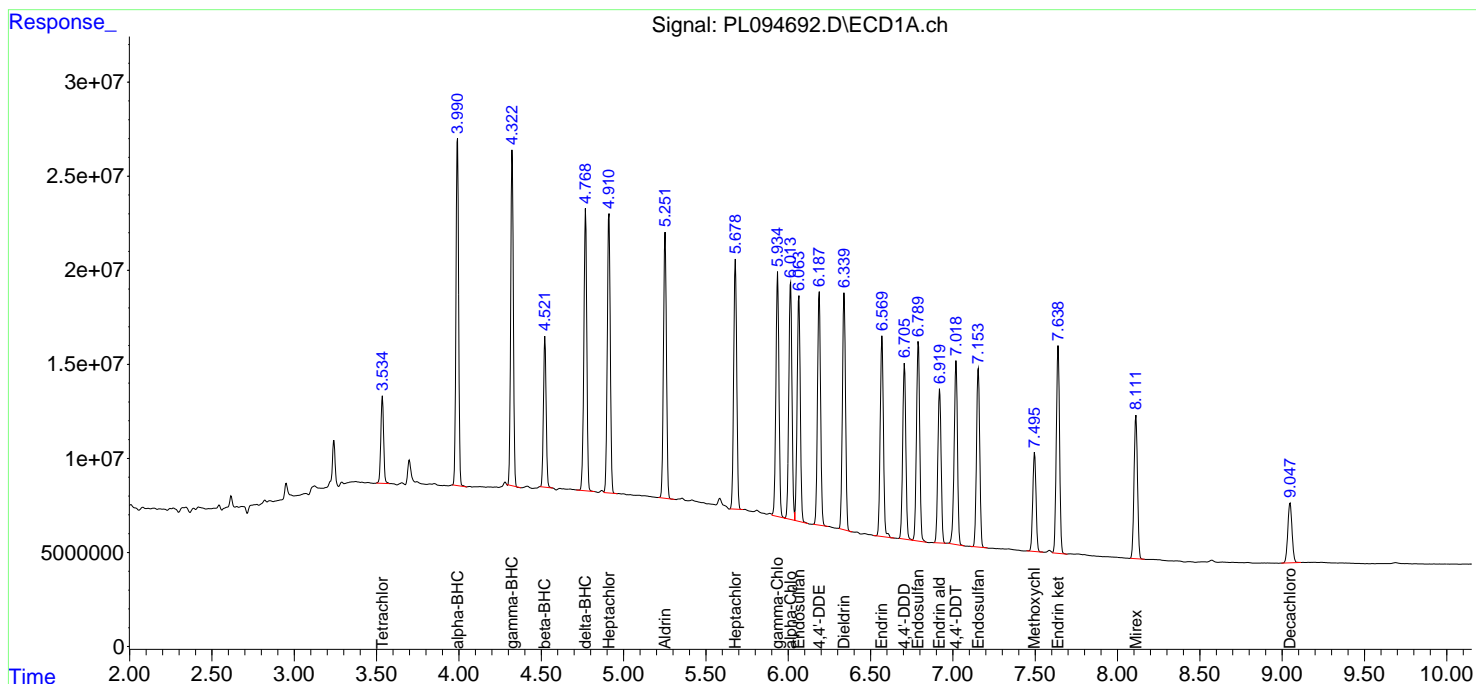
Instrument :
 ECD_L
 ClientSampleId :
 OR-620-JB-COMP-01MS

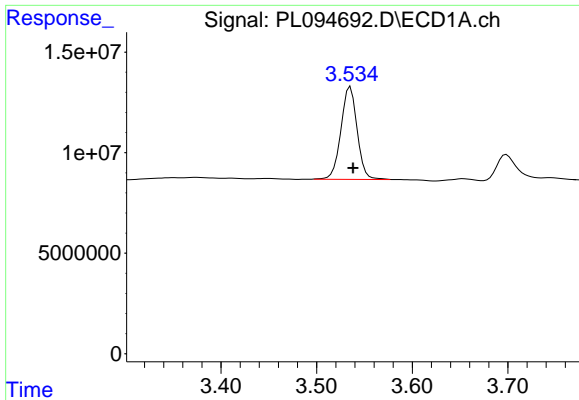
Manual Integrations
 APPROVED

Reviewed By :Yogesh Patel 03/14/2025
 Supervised By :mohammad ahmed 03/18/2025

Integration File signal 1: autoint1.e
 Integration File signal 2: autoint2.e
 Quant Time: Mar 14 11:57:23 2025
 Quant Method : Z:\pestpcbsrv\HPCHEM1\ECD_L\methods\PL031125.M
 Quant Title : GC Extractables
 QLast Update : Tue Mar 11 17:42:21 2025
 Response via : Initial Calibration
 Integrator: ChemStation

Volume Inj. : 1 µl
 Signal #1 Phase : ZB-MR1 Signal #2 Phase: ZB-MR2
 Signal #1 Info : 30M x 0.32mm x0.5 Signal #2 Info : 30M x 0.32mm x0.25µm

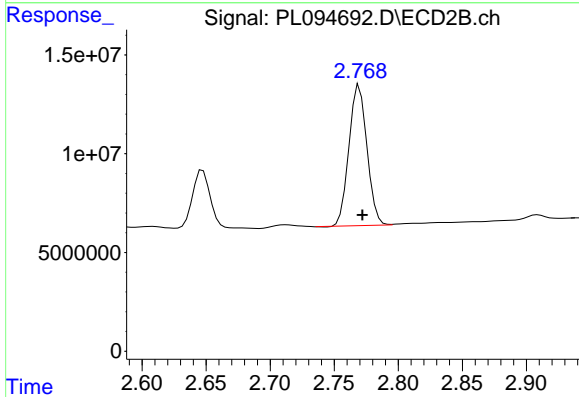




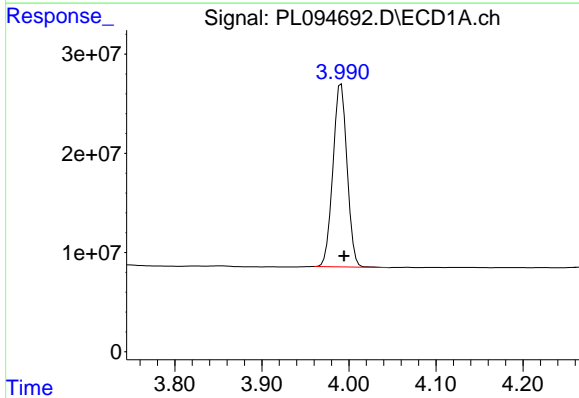
#1 Tetrachloro-m-xylene
 R.T.: 3.534 min
 Delta R.T.: -0.004 min
 Response: 54446935
 Conc: 19.23 ng/ml

Instrument : ECD_L
 ClientSampleId : OR-620-JB-COMP-01MS

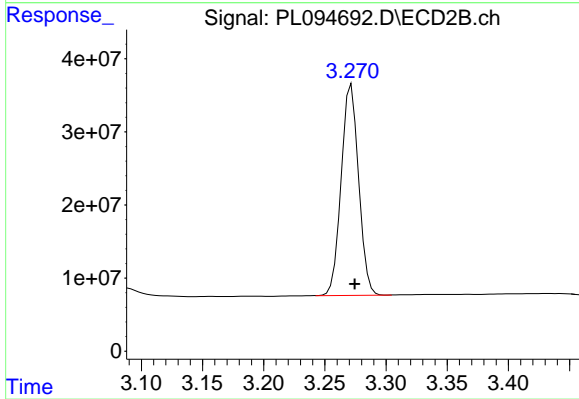
Manual Integrations
APPROVED
 Reviewed By :Yogesh Patel 03/14/2025
 Supervised By :mohammad ahmed 03/18/2025



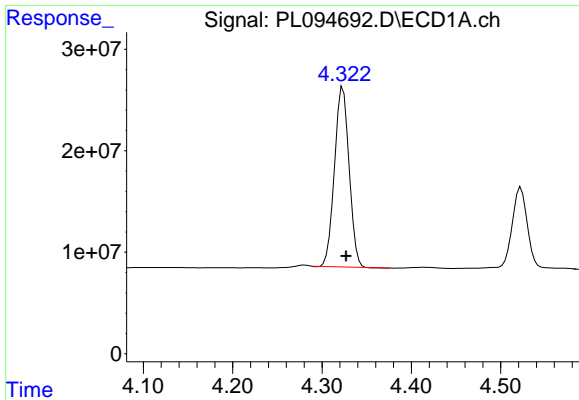
#1 Tetrachloro-m-xylene
 R.T.: 2.770 min
 Delta R.T.: -0.002 min
 Response: 69644504
 Conc: 19.51 ng/ml



#2 alpha-BHC
 R.T.: 3.991 min
 Delta R.T.: -0.003 min
 Response: 208870308
 Conc: 50.30 ng/ml



#2 alpha-BHC
 R.T.: 3.270 min
 Delta R.T.: -0.004 min
 Response: 285942233
 Conc: 53.04 ng/ml m

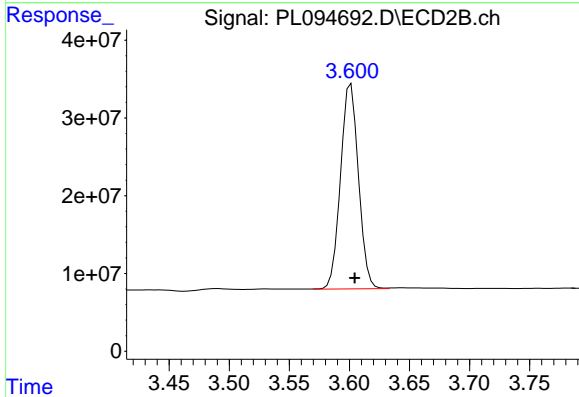


#3 gamma-BHC (Lindane)
 R.T.: 4.323 min
 Delta R.T.: -0.003 min
 Response: 201259441
 Conc: 50.44 ng/ml

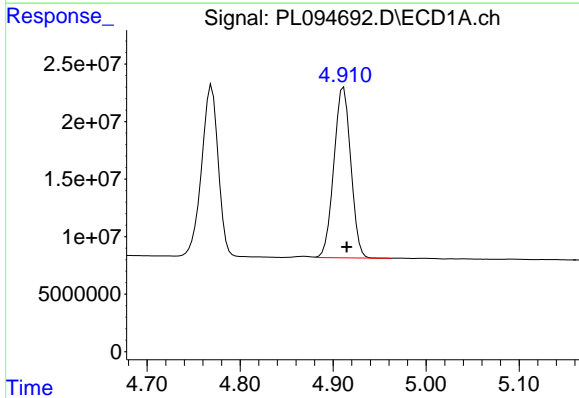
Instrument :
 ECD_L
 ClientSampleId :
 OR-620-JB-COMP-01MS

Manual Integrations
 APPROVED

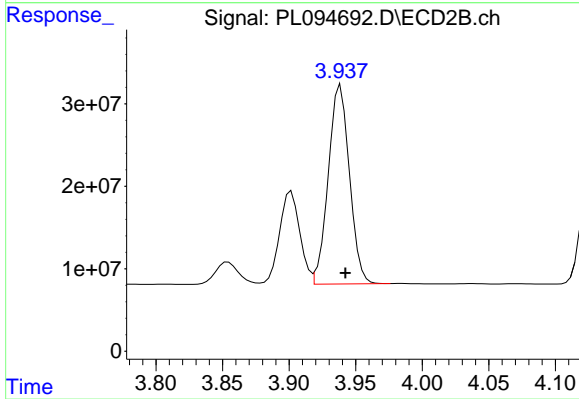
Reviewed By :Yogesh Patel 03/14/2025
 Supervised By :mohammad ahmed 03/18/2025



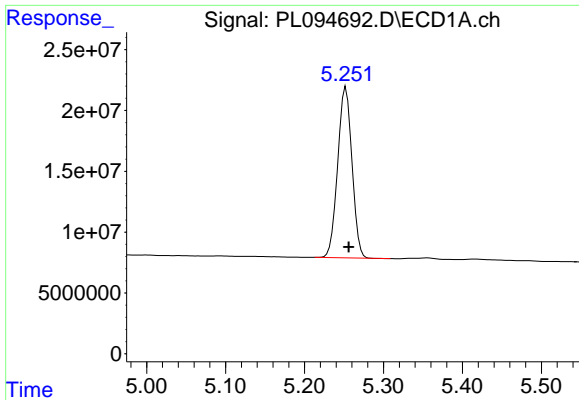
#3 gamma-BHC (Lindane)
 R.T.: 3.600 min
 Delta R.T.: -0.004 min
 Response: 274335866
 Conc: 53.38 ng/ml m



#4 Heptachlor
 R.T.: 4.911 min
 Delta R.T.: -0.003 min
 Response: 187268734
 Conc: 48.24 ng/ml



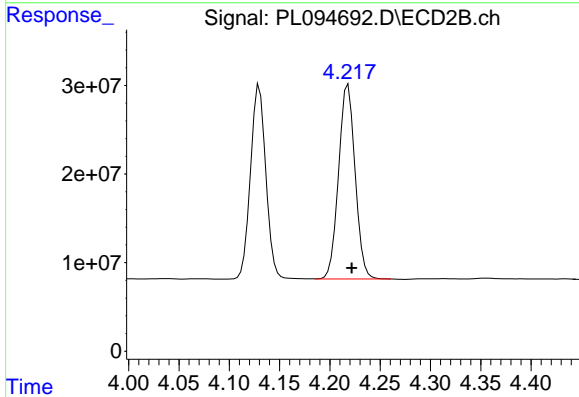
#4 Heptachlor
 R.T.: 3.939 min
 Delta R.T.: -0.004 min
 Response: 267245679
 Conc: 50.72 ng/ml



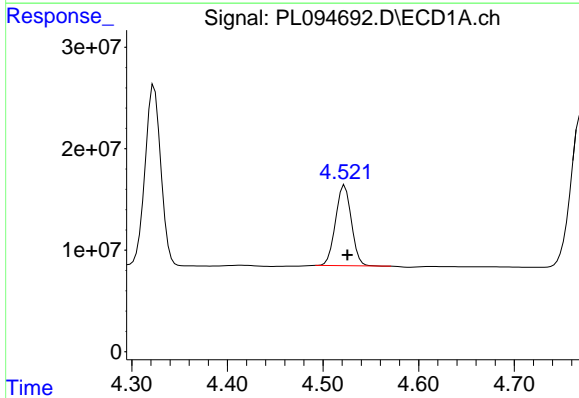
#5 Aldrin
 R.T.: 5.252 min
 Delta R.T.: -0.004 min
 Response: 176454363
 Conc: 47.79 ng/ml

Instrument : ECD_L
 ClientSampleId : OR-620-JB-COMP-01MS

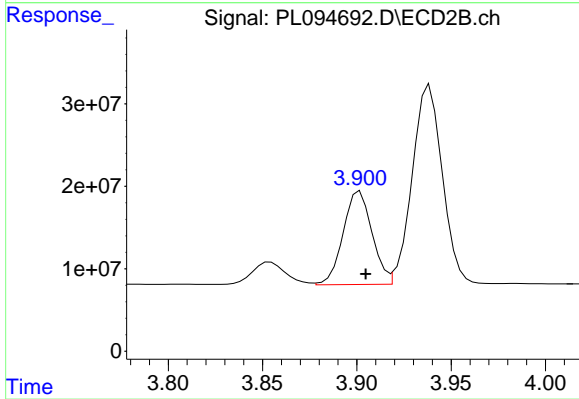
Manual Integrations
APPROVED
 Reviewed By :Yogesh Patel 03/14/2025
 Supervised By :mohammad ahmed 03/18/2025



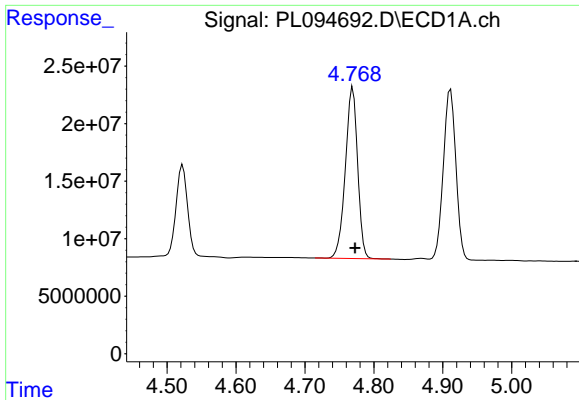
#5 Aldrin
 R.T.: 4.218 min
 Delta R.T.: -0.003 min
 Response: 250518020
 Conc: 51.37 ng/ml



#6 beta-BHC
 R.T.: 4.523 min
 Delta R.T.: -0.003 min
 Response: 91296434
 Conc: 49.48 ng/ml



#6 beta-BHC
 R.T.: 3.902 min
 Delta R.T.: -0.003 min
 Response: 120779713
 Conc: 54.37 ng/ml

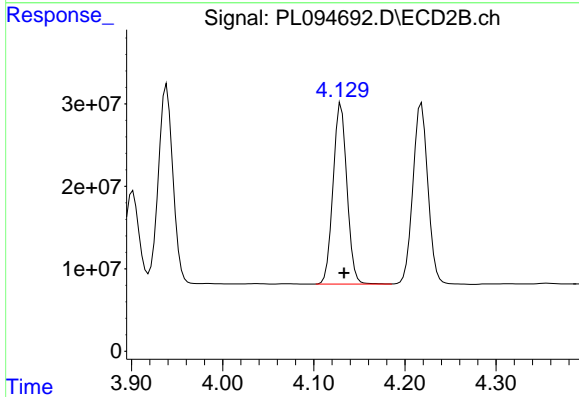


#7 delta-BHC
 R.T.: 4.770 min
 Delta R.T.: -0.003 min
 Response: 184091766
 Conc: 47.27 ng/ml

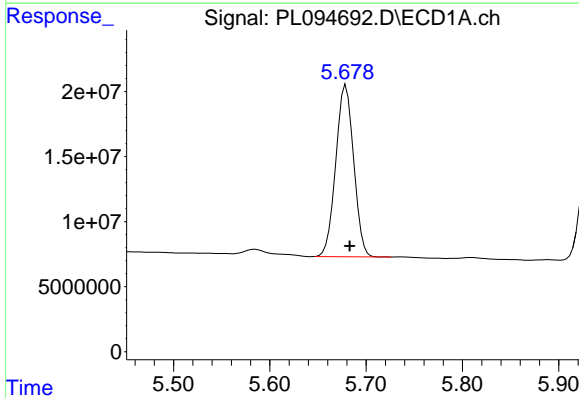
Instrument :
 ECD_L
 ClientSampleId :
 OR-620-JB-COMP-01MS

Manual Integrations
 APPROVED

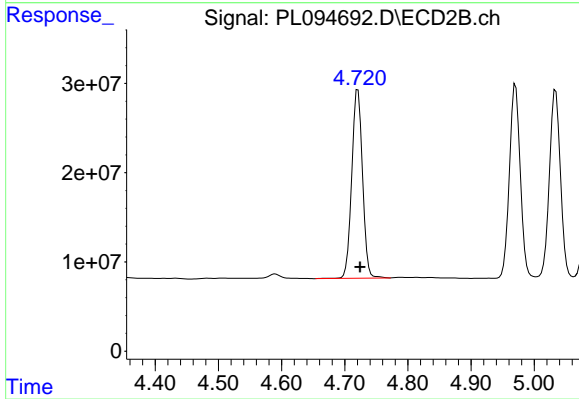
Reviewed By :Yogesh Patel 03/14/2025
 Supervised By :mohammad ahmed 03/18/2025



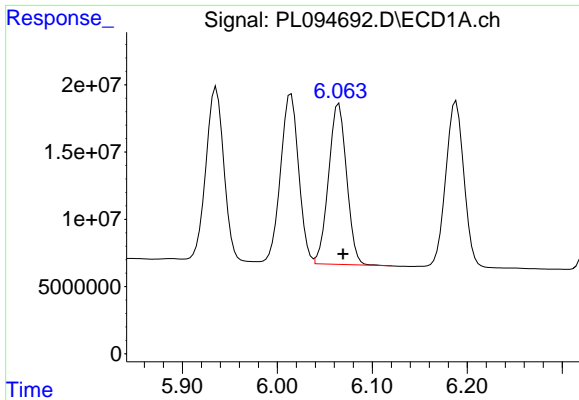
#7 delta-BHC
 R.T.: 4.130 min
 Delta R.T.: -0.003 min
 Response: 232226729
 Conc: 46.43 ng/ml



#8 Heptachlor epoxide
 R.T.: 5.679 min
 Delta R.T.: -0.004 min
 Response: 170336237
 Conc: 50.92 ng/ml



#8 Heptachlor epoxide
 R.T.: 4.721 min
 Delta R.T.: -0.004 min
 Response: 250105802
 Conc: 54.63 ng/ml



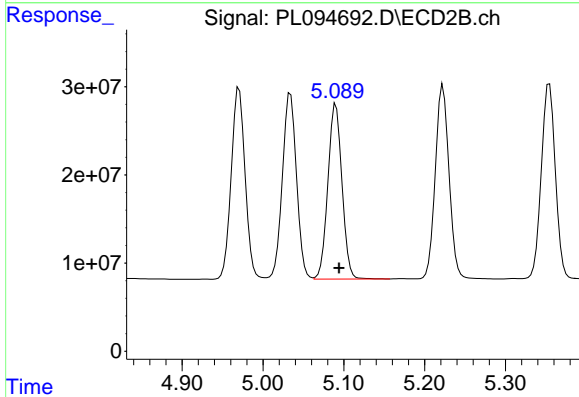
#9 Endosulfan I

R.T.: 6.065 min
 Delta R.T.: -0.004 min
 Response: 157701306
 Conc: 51.37 ng/ml

Instrument :
 ECD_L
 ClientSampleId :
 OR-620-JB-COMP-01MS

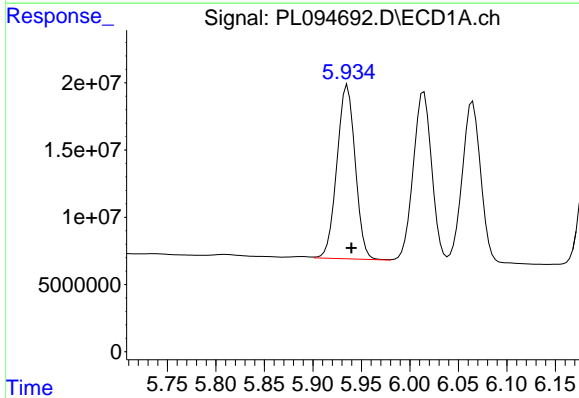
Manual Integrations
 APPROVED

Reviewed By :Yogesh Patel 03/14/2025
 Supervised By :mohammad ahmed 03/18/2025



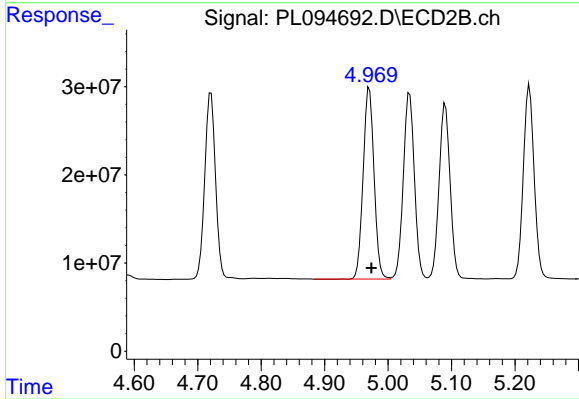
#9 Endosulfan I

R.T.: 5.090 min
 Delta R.T.: -0.004 min
 Response: 241447509
 Conc: 55.02 ng/ml



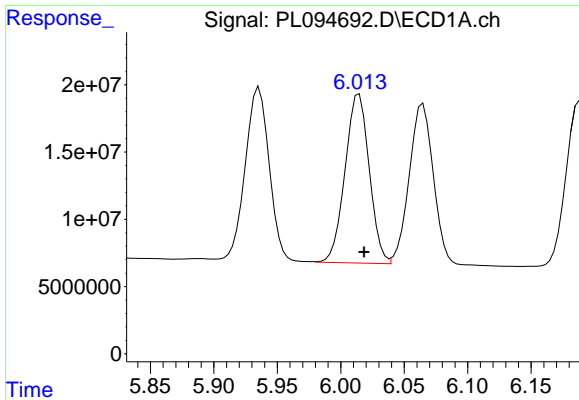
#10 gamma-Chlordane

R.T.: 5.936 min
 Delta R.T.: -0.004 min
 Response: 169470718
 Conc: 50.30 ng/ml



#10 gamma-Chlordane

R.T.: 4.971 min
 Delta R.T.: -0.003 min
 Response: 258883164
 Conc: 53.62 ng/ml



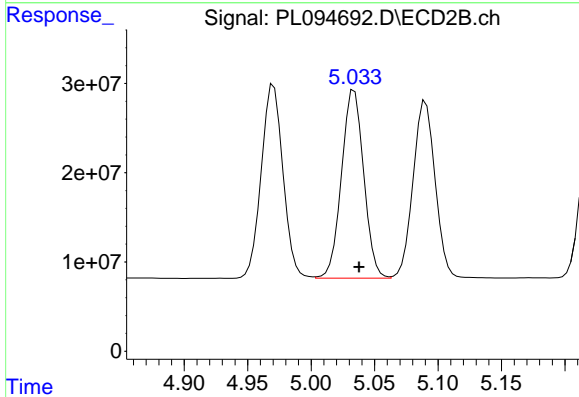
#11 alpha-Chlordane

R.T.: 6.015 min
 Delta R.T.: -0.004 min
 Response: 166519423
 Conc: 50.51 ng/ml

Instrument :
 ECD_L
 ClientSampleId :
 OR-620-JB-COMP-01MS

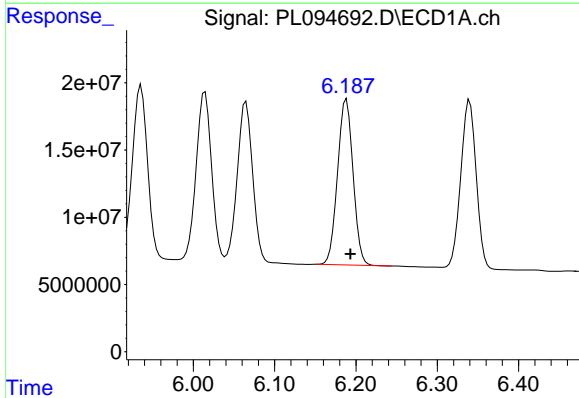
Manual Integrations
 APPROVED

Reviewed By :Yogesh Patel 03/14/2025
 Supervised By :mohammad ahmed 03/18/2025



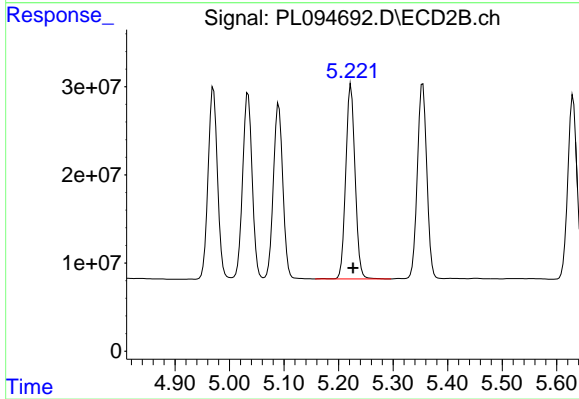
#11 alpha-Chlordane

R.T.: 5.034 min
 Delta R.T.: -0.004 min
 Response: 256935313
 Conc: 53.83 ng/ml



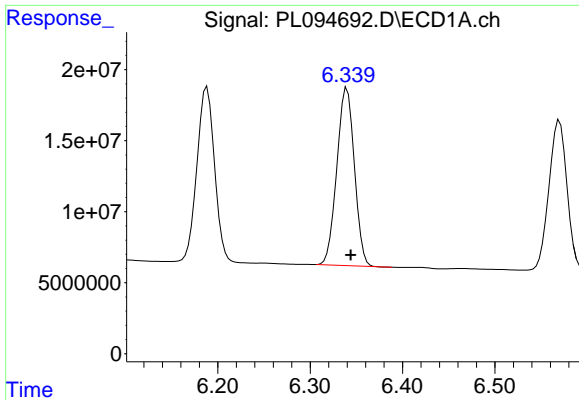
#12 4,4'-DDE

R.T.: 6.188 min
 Delta R.T.: -0.005 min
 Response: 163115902
 Conc: 55.44 ng/ml



#12 4,4'-DDE

R.T.: 5.223 min
 Delta R.T.: -0.004 min
 Response: 261997700
 Conc: 56.36 ng/ml



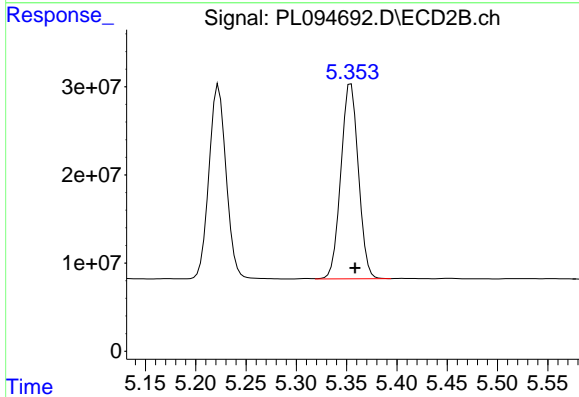
#13 Dieldrin

R.T.: 6.340 min
 Delta R.T.: -0.004 min
 Response: 165106694
 Conc: 51.63 ng/ml

Instrument :
 ECD_L
 ClientSampleId :
 OR-620-JB-COMP-01MS

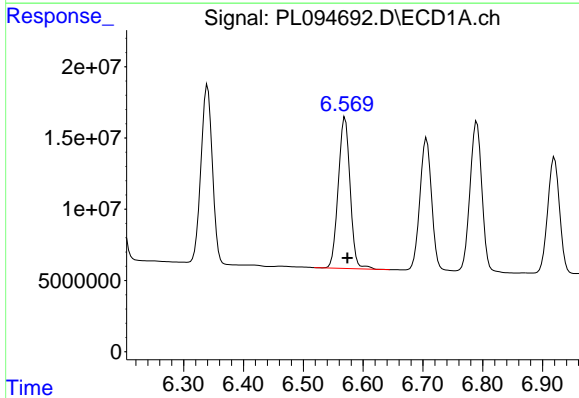
Manual Integrations
 APPROVED

Reviewed By :Yogesh Patel 03/14/2025
 Supervised By :mohammad ahmed 03/18/2025



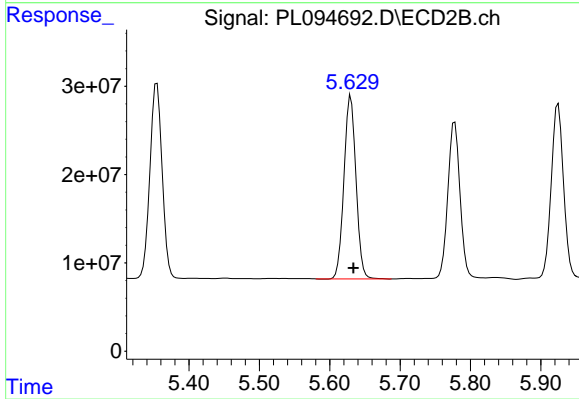
#13 Dieldrin

R.T.: 5.354 min
 Delta R.T.: -0.004 min
 Response: 267391144
 Conc: 55.11 ng/ml



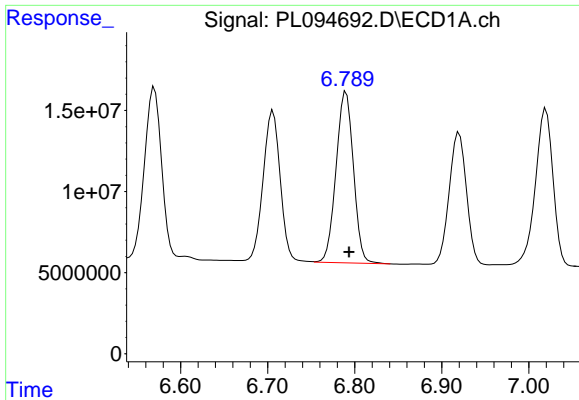
#14 Endrin

R.T.: 6.570 min
 Delta R.T.: -0.004 min
 Response: 146199038
 Conc: 52.74 ng/ml



#14 Endrin

R.T.: 5.630 min
 Delta R.T.: -0.004 min
 Response: 246783590
 Conc: 56.55 ng/ml



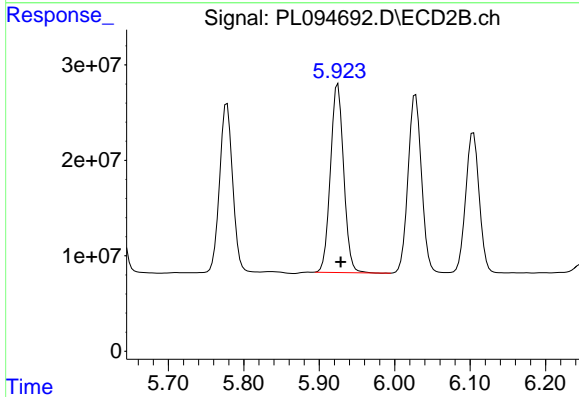
#15 Endosulfan II

R.T.: 6.790 min
 Delta R.T.: -0.004 min
 Response: 146355530
 Conc: 53.91 ng/ml

Instrument :
 ECD_L
 ClientSampleId :
 OR-620-JB-COMP-01MS

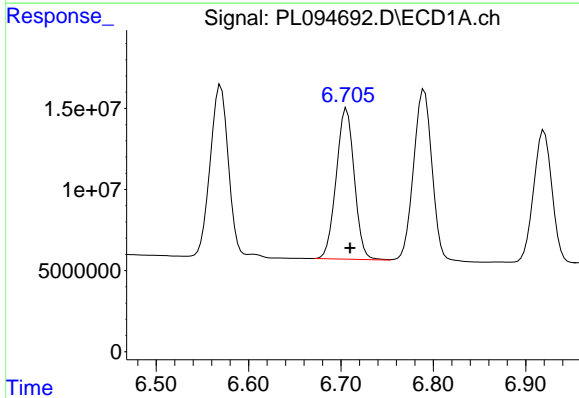
Manual Integrations
 APPROVED

Reviewed By :Yogesh Patel 03/14/2025
 Supervised By :mohammad ahmed 03/18/2025



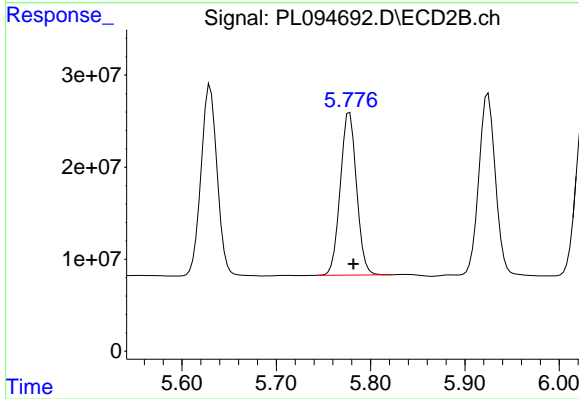
#15 Endosulfan II

R.T.: 5.925 min
 Delta R.T.: -0.004 min
 Response: 240502870
 Conc: 55.57 ng/ml



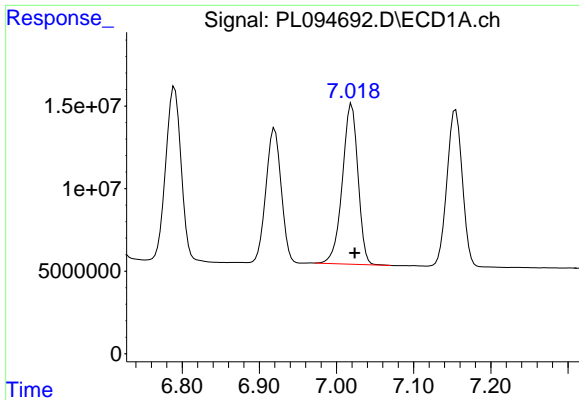
#16 4,4'-DDD

R.T.: 6.706 min
 Delta R.T.: -0.004 min
 Response: 126404082
 Conc: 58.36 ng/ml



#16 4,4'-DDD

R.T.: 5.778 min
 Delta R.T.: -0.004 min
 Response: 212093425
 Conc: 58.98 ng/ml



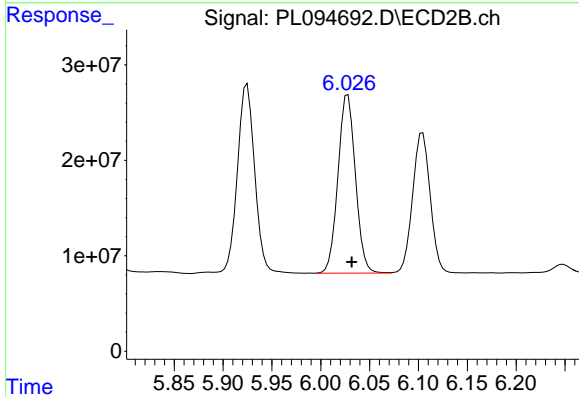
#17 4,4'-DDT

R.T.: 7.020 min
 Delta R.T.: -0.004 min
 Response: 136002638
 Conc: 57.18 ng/ml

Instrument : ECD_L
 ClientSampleId : OR-620-JB-COMP-01MS

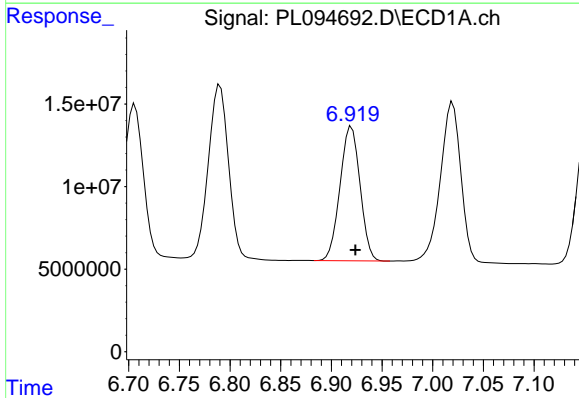
Manual Integrations
 APPROVED

Reviewed By :Yogesh Patel 03/14/2025
 Supervised By :mohammad ahmed 03/18/2025



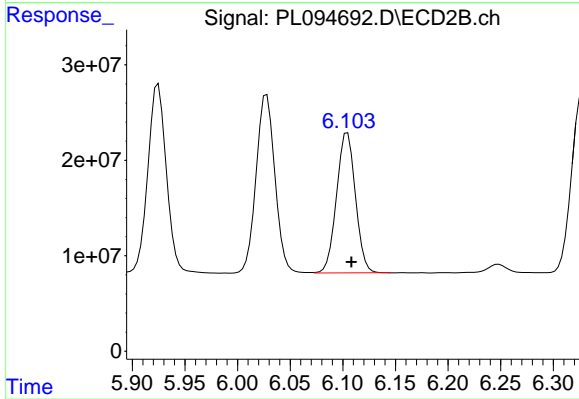
#17 4,4'-DDT

R.T.: 6.028 min
 Delta R.T.: -0.004 min
 Response: 232352305
 Conc: 57.63 ng/ml



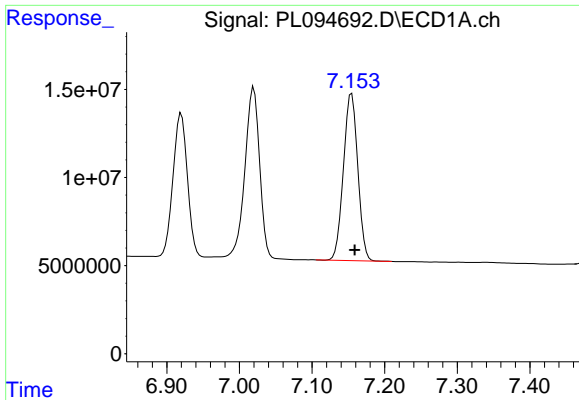
#18 Endrin aldehyde

R.T.: 6.920 min
 Delta R.T.: -0.004 min
 Response: 111880938
 Conc: 53.00 ng/ml



#18 Endrin aldehyde

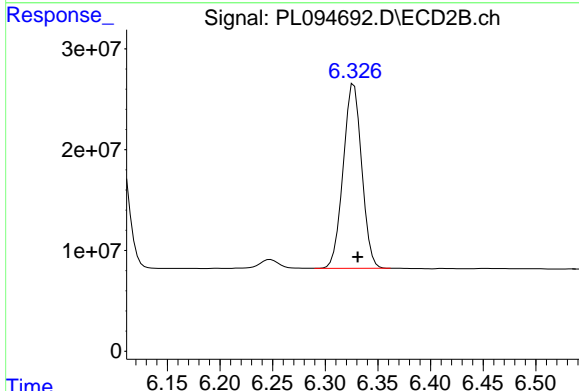
R.T.: 6.104 min
 Delta R.T.: -0.004 min
 Response: 183357825
 Conc: 54.48 ng/ml



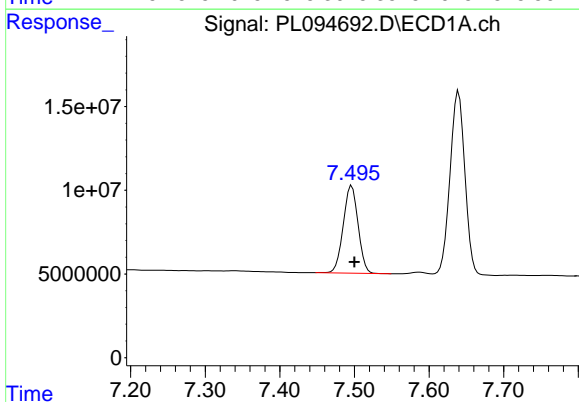
#19 Endosulfan Sulfate
 R.T.: 7.155 min
 Delta R.T.: -0.004 min
 Response: 130453087
 Conc: 53.64 ng/ml

Instrument : ECD_L
 ClientSampleId : OR-620-JB-COMP-01MS

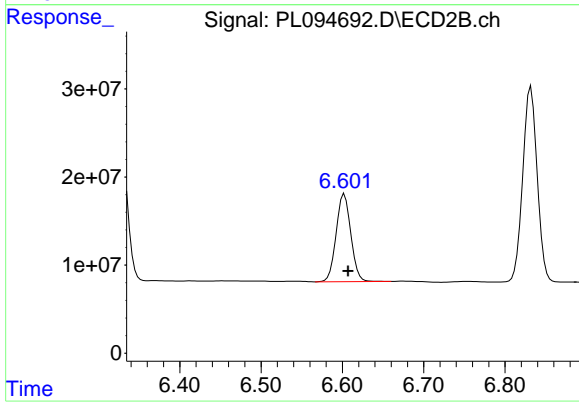
Manual Integrations
APPROVED
 Reviewed By :Yogesh Patel 03/14/2025
 Supervised By :mohammad ahmed 03/18/2025



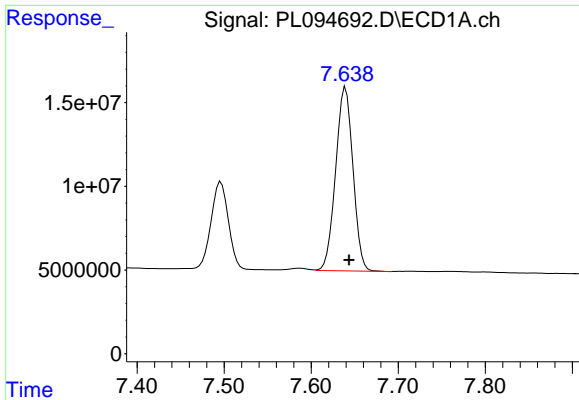
#19 Endosulfan Sulfate
 R.T.: 6.327 min
 Delta R.T.: -0.003 min
 Response: 225060257
 Conc: 55.25 ng/ml



#20 Methoxychlor
 R.T.: 7.496 min
 Delta R.T.: -0.003 min
 Response: 71954838
 Conc: 60.11 ng/ml



#20 Methoxychlor
 R.T.: 6.602 min
 Delta R.T.: -0.004 min
 Response: 124869532
 Conc: 58.87 ng/ml



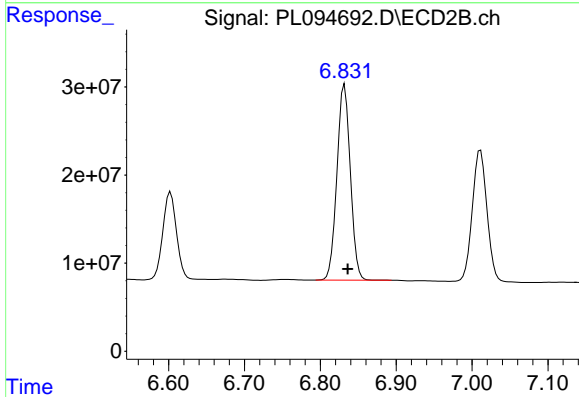
#21 Endrin ketone

R.T.: 7.640 min
 Delta R.T.: -0.004 min
 Response: 151606114
 Conc: 57.36 ng/ml

Instrument :
 ECD_L
 ClientSampleId :
 OR-620-JB-COMP-01MS

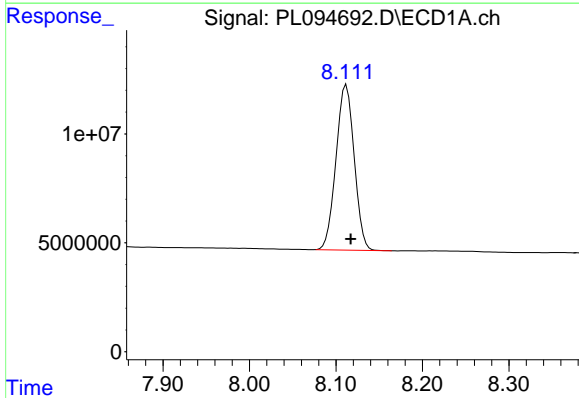
Manual Integrations
 APPROVED

Reviewed By :Yogesh Patel 03/14/2025
 Supervised By :mohammad ahmed 03/18/2025



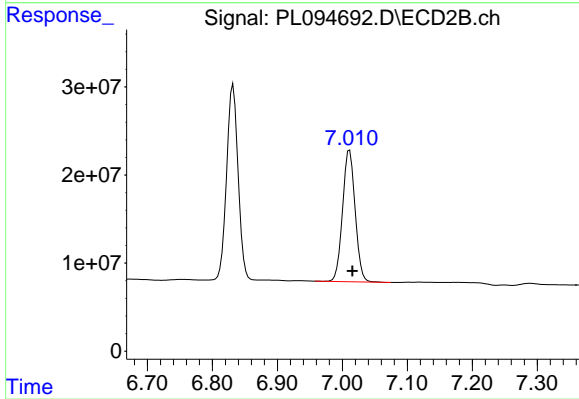
#21 Endrin ketone

R.T.: 6.832 min
 Delta R.T.: -0.004 min
 Response: 272795229
 Conc: 57.16 ng/ml



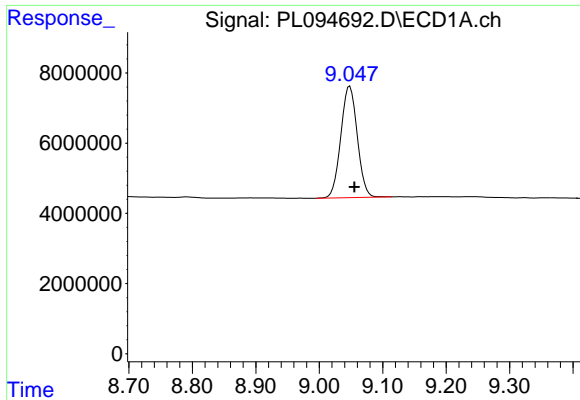
#22 Mirex

R.T.: 8.112 min
 Delta R.T.: -0.005 min
 Response: 110363362
 Conc: 53.41 ng/ml



#22 Mirex

R.T.: 7.011 min
 Delta R.T.: -0.005 min
 Response: 201684156
 Conc: 53.14 ng/ml



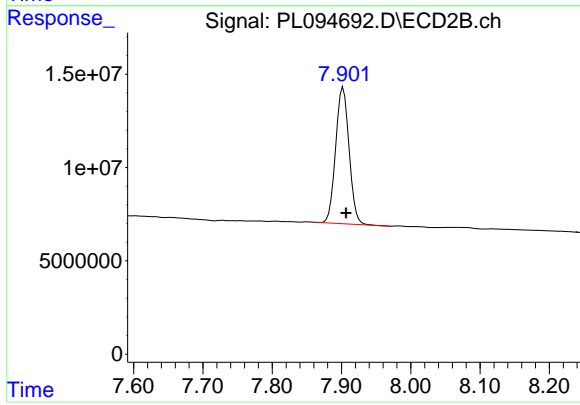
#28 Decachlorobiphenyl

R.T.: 9.048 min
 Delta R.T.: -0.007 min
 Response: 57095148
 Conc: 27.09 ng/ml

Instrument :
 ECD_L
 ClientSampleId :
 OR-620-JB-COMP-01MS

Manual Integrations
 APPROVED

Reviewed By :Yogesh Patel 03/14/2025
 Supervised By :mohammad ahmed 03/18/2025



#28 Decachlorobiphenyl

R.T.: 7.902 min
 Delta R.T.: -0.004 min
 Response: 98382478
 Conc: 24.36 ng/ml