

Data Path : Z:\pestpcbsrv\HPCHEM1\ECD_L\Data\PL031419\
 Data File : PL045904.D
 Signal(s) : Signal #1: ECD1A.ch Signal #2: ECD2B.ch
 Acq On : 14 Mar 2019 12:16
 Operator : AJ\SJ
 Sample : K1861-02
 Misc :
 ALS Vial : 8 Sample Multiplier: 1

Instrument :
 ECD_L
 ClientSampleId :
 BF-07-031119

Integration File signal 1: autoint1.e
 Integration File signal 2: autoint2.e
 Quant Time: Mar 15 01:06:34 2019
 Quant Method : Z:\pestpcbsrv\HPCHEM1\ECD_L\methods\PL022719.M
 Quant Title : GC Extractables
 QLast Update : Wed Feb 27 17:00:03 2019
 Response via : Initial Calibration
 Integrator: ChemStation

Volume Inj. : 1 µl
 Signal #1 Phase : ZB-MR2 Signal #2 Phase: ZB-MR1
 Signal #1 Info : 30M x 0.32mm x0.2 Signal #2 Info : 30M x 0.32mm x0.5µm

Compound	RT#1	RT#2	Resp#1	Resp#2	ng/ml	ng/ml
----------	------	------	--------	--------	-------	-------

 System Monitoring Compounds

1) SA Tetrachlo...	3.362	3.980	119.1E6	38178791	17.310	17.828
28) SA Decachlor...	8.042	9.035	123.2E6	35732761	14.721	15.638

Target Compounds

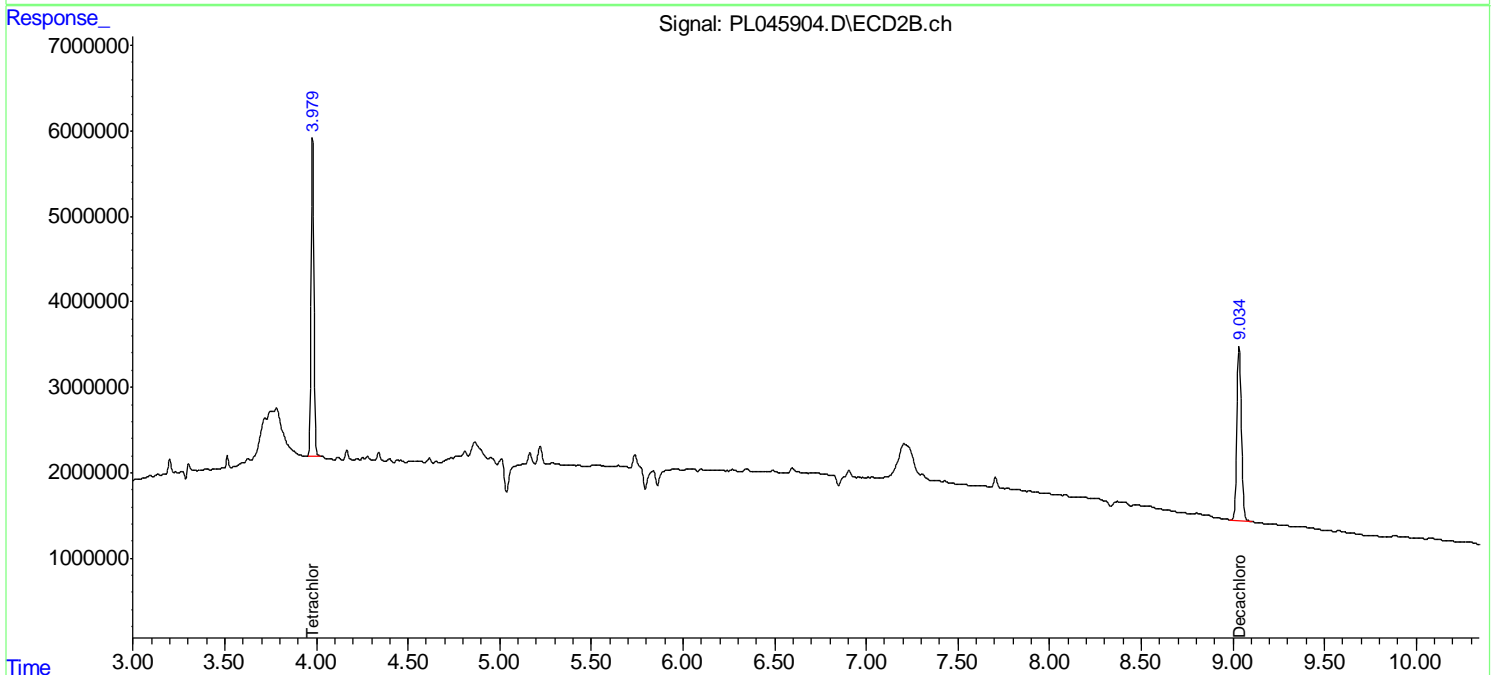
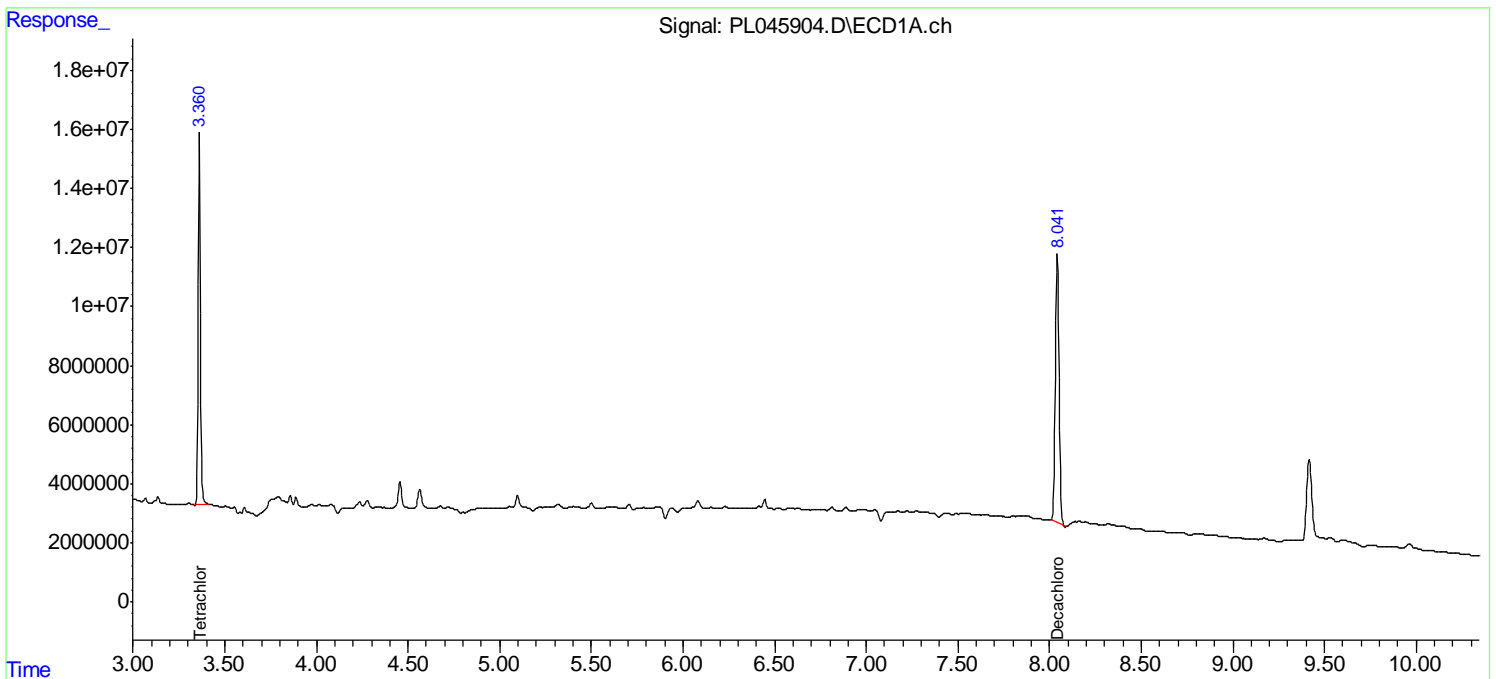
(f)=RT Delta > 1/2 Window (#)=Amounts differ by > 25% (m)=manual int.

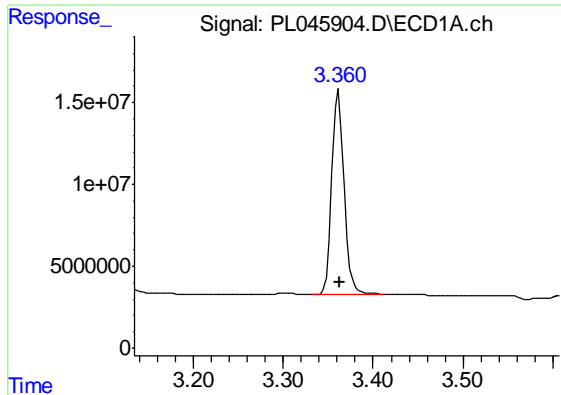
Data Path : Z:\pestpcbsrv\HPCHEM1\ECD_L\Data\PL031419\
 Data File : PL045904.D
 Signal(s) : Signal #1: ECD1A.ch Signal #2: ECD2B.ch
 Acq On : 14 Mar 2019 12:16
 Operator : AJ\SJ
 Sample : K1861-02
 Misc :
 ALS Vial : 8 Sample Multiplier: 1

Instrument :
 ECD_L
 ClientSampleId :
 BF-07-031119

Integration File signal 1: autoint1.e
 Integration File signal 2: autoint2.e
 Quant Time: Mar 15 01:06:34 2019
 Quant Method : Z:\pestpcbsrv\HPCHEM1\ECD_L\methods\PL022719.M
 Quant Title : GC Extractables
 QLast Update : Wed Feb 27 17:00:03 2019
 Response via : Initial Calibration
 Integrator: ChemStation

Volume Inj. : 1 µl
 Signal #1 Phase : ZB-MR2 Signal #2 Phase: ZB-MR1
 Signal #1 Info : 30M x 0.32mm x0.2 Signal #2 Info : 30M x 0.32mm x0.5µm

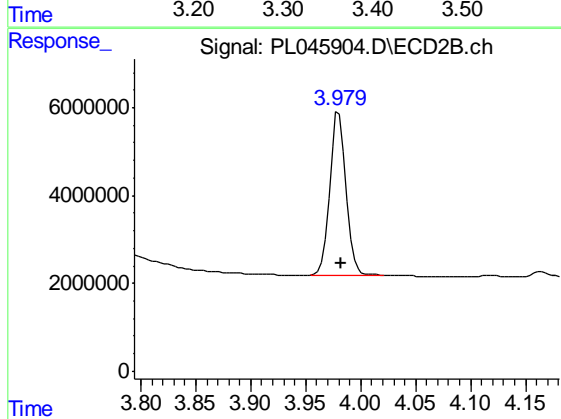




#1 Tetrachloro-m-xylene

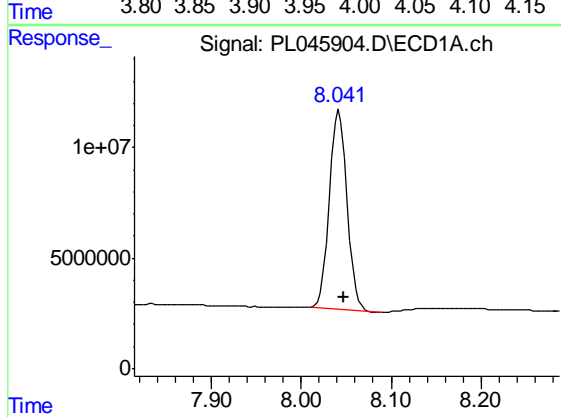
R.T.: 3.362 min
Delta R.T.: -0.001 min
Response: 119082337
Conc: 17.31 ng/ml

Instrument :
ECD_L
ClientSampleId :
BF-07-031119



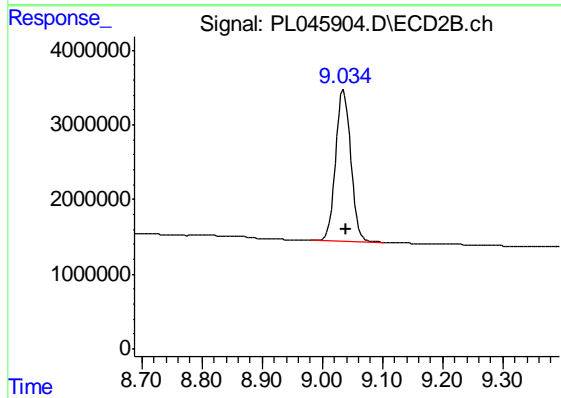
#1 Tetrachloro-m-xylene

R.T.: 3.980 min
Delta R.T.: -0.001 min
Response: 38178791
Conc: 17.83 ng/ml



#28 Decachlorobiphenyl

R.T.: 8.042 min
Delta R.T.: -0.005 min
Response: 123177641
Conc: 14.72 ng/ml



#28 Decachlorobiphenyl

R.T.: 9.035 min
Delta R.T.: -0.003 min
Response: 35732761
Conc: 15.64 ng/ml