

Data Path : Z:\pestpcbsrv\HPCHEM1\ECD_L\Data\PL031420\
 Data File : PL057333.D
 Signal(s) : Signal #1: ECD1A.ch Signal #2: ECD2B.ch
 Acq On : 13 Mar 2020 16:27
 Operator : AJ\MA
 Sample : RESCHK
 Misc :
 ALS Vial : 4 Sample Multiplier: 1

Instrument :
 ECD_L
 ClientSampleId :
 RESCHK

Integration File signal 1: autoint1.e
 Integration File signal 2: autoint2.e
 Quant Time: Mar 14 03:36:25 2020
 Quant Method : Z:\pestpcbsrv\HPCHEM1\ECD_L\methods\PL031420.M
 Quant Title : GC Extractables
 QLast Update : Sat Mar 14 00:45:03 2020
 Response via : Initial Calibration
 Integrator: ChemStation

Volume Inj. : 1 µl
 Signal #1 Phase : ZB-MR2 Signal #2 Phase: ZB-MR1
 Signal #1 Info : 30M x 0.32mm x0.2 Signal #2 Info : 30M x 0.32mm x0.5µm

Compound	RT#1	RT#2	Resp#1	Resp#2	ng/ml	ng/ml

System Monitoring Compounds						
1) SA Tetrachlo...	3.458	3.957	194.8E6	45209146	21.013	20.838
28) SA Decachlor...	8.206	8.981	222.7E6	47083716	21.046	21.234
Target Compounds						
2) A alpha-BHC	3.897	0.000	2066249	0	0.130	N.D. #
4) MA Heptachlor	4.505f	5.139	169943	7815535	0.011	2.483 #
5) MB Aldrin	4.726	0.000	1851452	0	0.134	N.D. #
8) B Heptachlo...	5.187f	0.000	722987	0	0.056	N.D. #
9) A Endosulfan I	5.509	6.169	111.5E6	27408601	9.382	9.633
10) B gamma-Chl...	5.397	6.048	119.0E6	29276097	9.124	9.499
12) B 4,4'-DDE	5.619	6.280	242.2E6	53914925	19.444	18.968
13) MA Dieldrin	5.751	6.426	245.4E6	57356749	19.456	19.391
14) MA Endrin	6.011	0.000	2020764	0	0.177	N.D. #
15) B Endosulfa...	6.282	0.000	5204372	0	0.479	N.D. #
16) A 4,4'-DDD	6.139	0.000	1871185	0	0.191	N.D. #
17) MA 4,4'-DDT	6.369	0.000	546133	0	0.055	N.D. #
18) B Endrin al...	6.444	0.000	2972818	0	0.322	N.D. #
19) B Endosulfa...	6.663	7.198	199.7E6	47165105	19.882	19.337
20) A Methoxychlor	6.920	7.524	534.8E6	122.9E6	99.668	94.499
21) B Endrin ke...	7.154	7.665	219.5E6	51193454	19.417	19.776
22) Mirex	7.330	0.000	1159772	0	0.143	N.D. #
23) Chlordane-1	4.355f	0.000	1690497	0	5.208	N.D. #
24) Chlordane-2	4.844f	0.000	177099	0	0.487	N.D. #
25) Chlordane-3	5.397	6.048	119.0E6	29276097	105.504	77.205 #
27) Chlordane-5	6.282	0.000	5204372	0	14.303	N.D. #

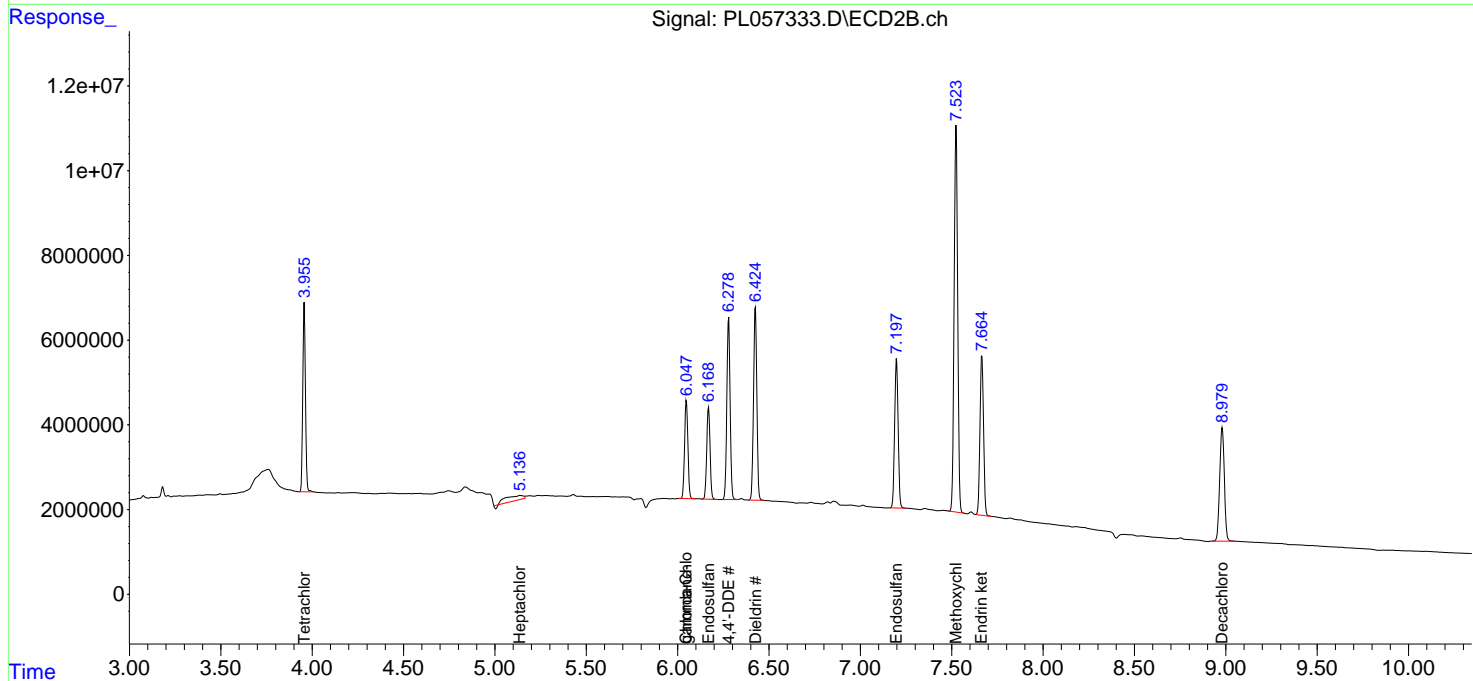
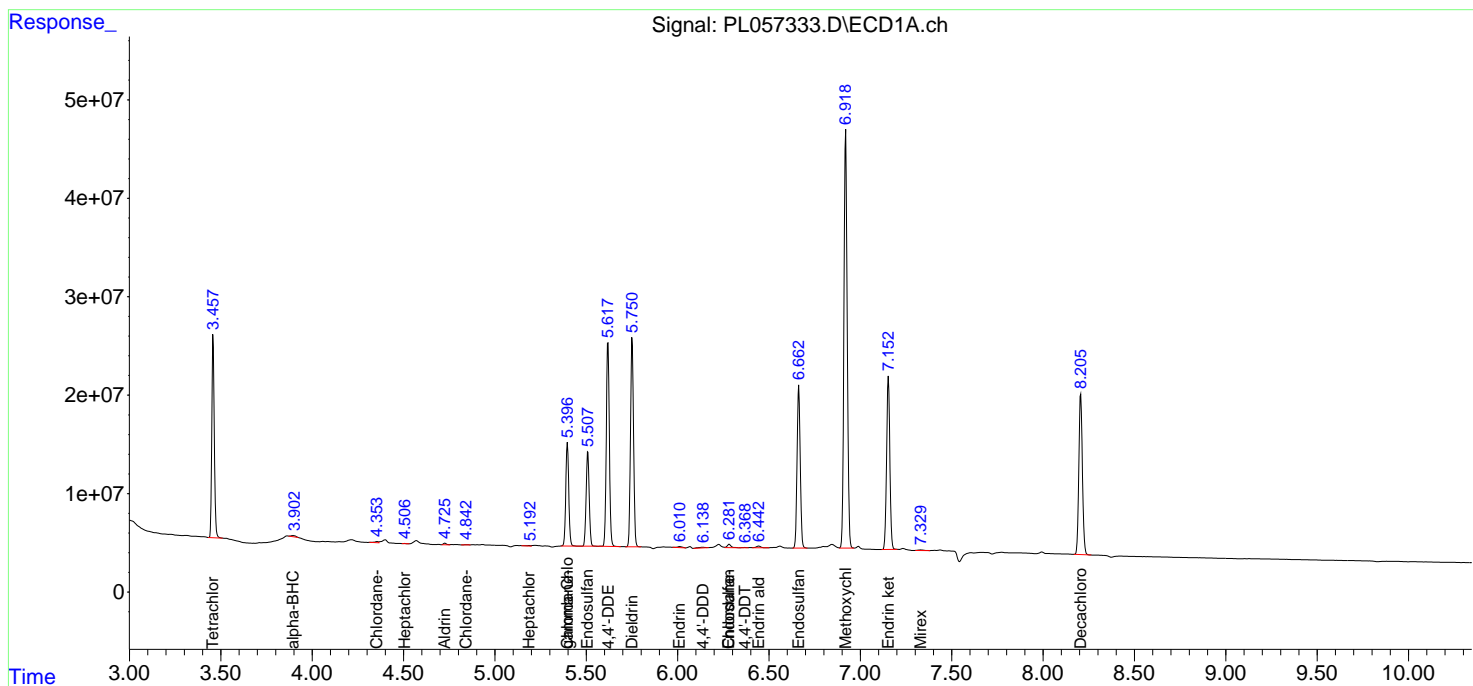
(f)=RT Delta > 1/2 Window (#)=Amounts differ by > 25% (m)=manual int.

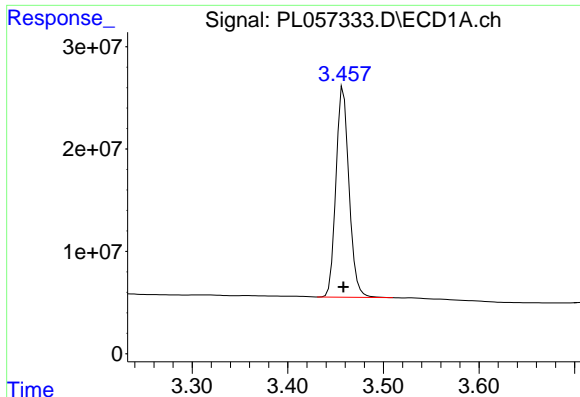
Data Path : Z:\pestpcbsrv\HPCHEM1\ECD_L\Data\PL031420\
 Data File : PL057333.D
 Signal(s) : Signal #1: ECD1A.ch Signal #2: ECD2B.ch
 Acq On : 13 Mar 2020 16:27
 Operator : AJ\MA
 Sample : RESCHK
 Misc :
 ALS Vial : 4 Sample Multiplier: 1

Instrument :
 ECD_L
 ClientSampled :
 RESCHK

Integration File signal 1: autoint1.e
 Integration File signal 2: autoint2.e
 Quant Time: Mar 14 03:36:25 2020
 Quant Method : Z:\pestpcbsrv\HPCHEM1\ECD_L\methods\PL031420.M
 Quant Title : GC Extractables
 QLast Update : Sat Mar 14 00:45:03 2020
 Response via : Initial Calibration
 Integrator: ChemStation

Volume Inj. : 1 µl
 Signal #1 Phase : ZB-MR2 Signal #2 Phase: ZB-MR1
 Signal #1 Info : 30M x 0.32mm x0.2 Signal #2 Info : 30M x 0.32mm x0.5µm

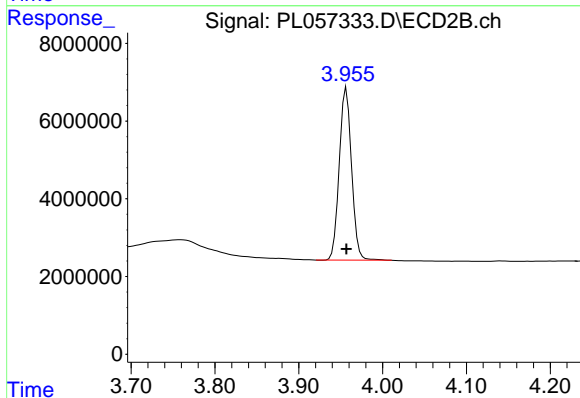




#1 Tetrachloro-m-xylene

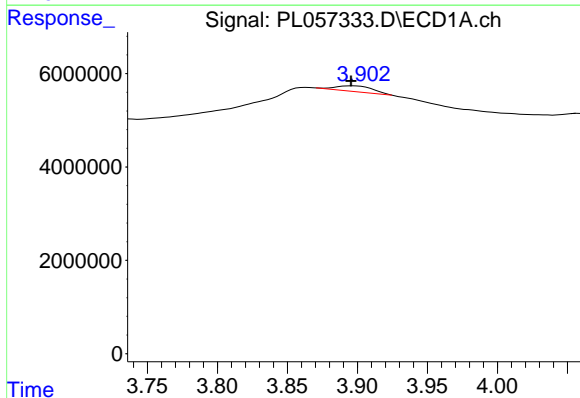
R.T.: 3.458 min
 Delta R.T.: 0.000 min
 Response: 194779332
 Conc: 21.01 ng/ml

Instrument :
 ECD_L
 ClientSampleId :
 RESCHK



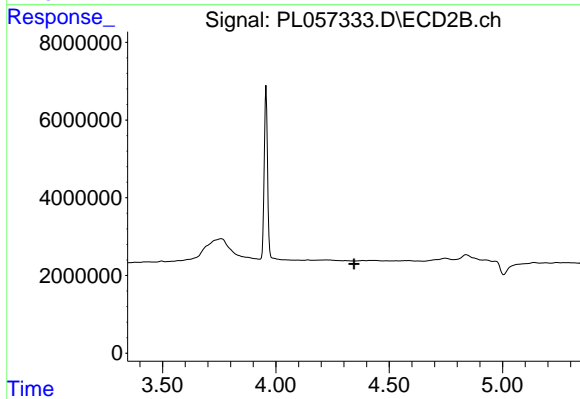
#1 Tetrachloro-m-xylene

R.T.: 3.957 min
 Delta R.T.: 0.000 min
 Response: 45209146
 Conc: 20.84 ng/ml



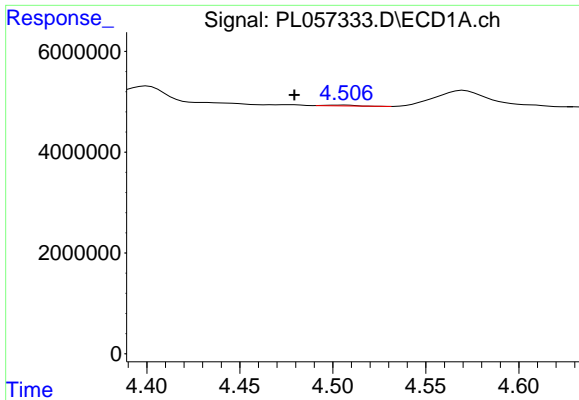
#2 alpha-BHC

R.T.: 3.897 min
 Delta R.T.: 0.002 min
 Response: 2066249
 Conc: 0.13 ng/ml



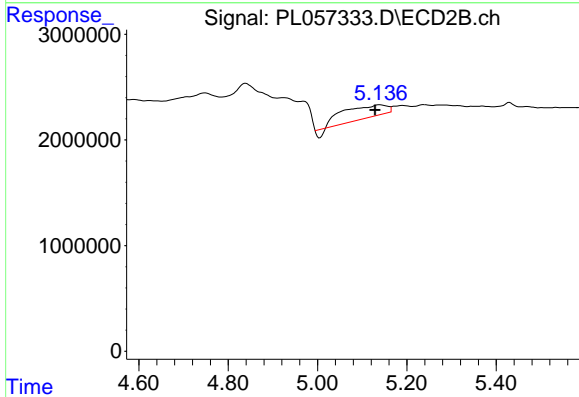
#2 alpha-BHC

R.T.: 0.000 min
 Exp R.T. : 4.345 min
 Response: 0
 Conc: N.D.

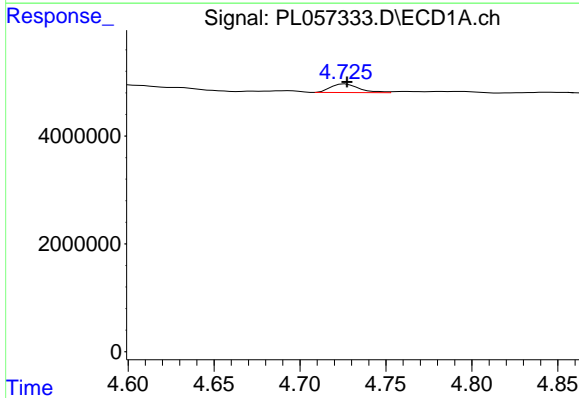


#4 Heptachlor
 R.T.: 4.505 min
 Delta R.T.: 0.026 min
 Response: 169943
 Conc: 0.01 ng/ml

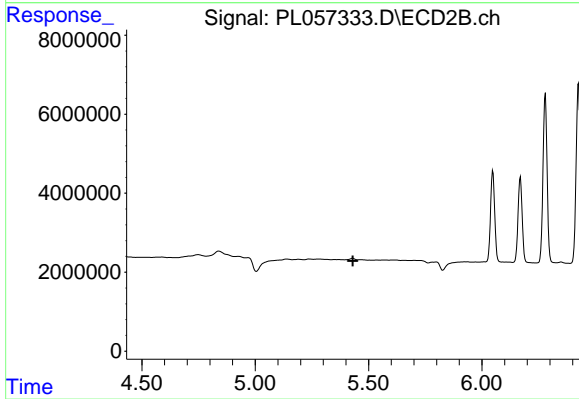
Instrument :
 ECD_L
 ClientSampleId :
 RESCHK



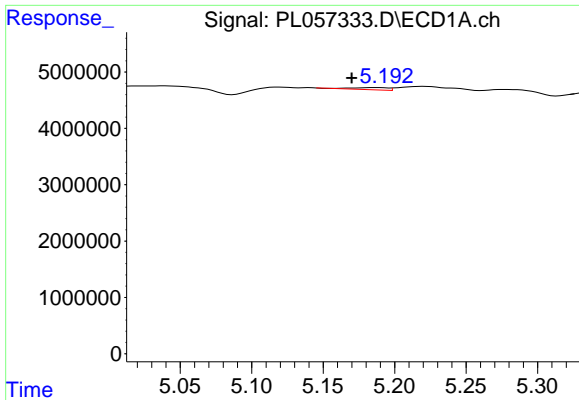
#4 Heptachlor
 R.T.: 5.139 min
 Delta R.T.: 0.010 min
 Response: 7815535
 Conc: 2.48 ng/ml



#5 Aldrin
 R.T.: 4.726 min
 Delta R.T.: 0.000 min
 Response: 1851452
 Conc: 0.13 ng/ml

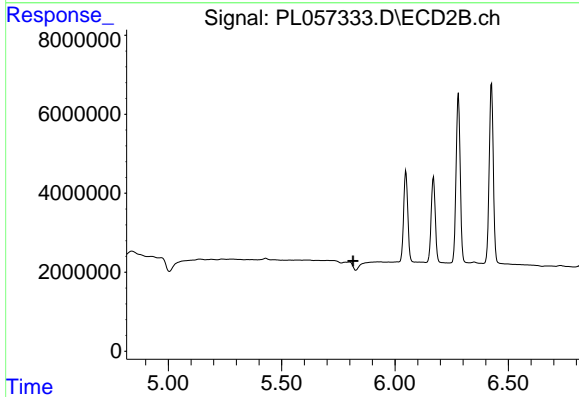


#5 Aldrin
 R.T.: 0.000 min
 Exp R.T. : 5.431 min
 Response: 0
 Conc: N.D.

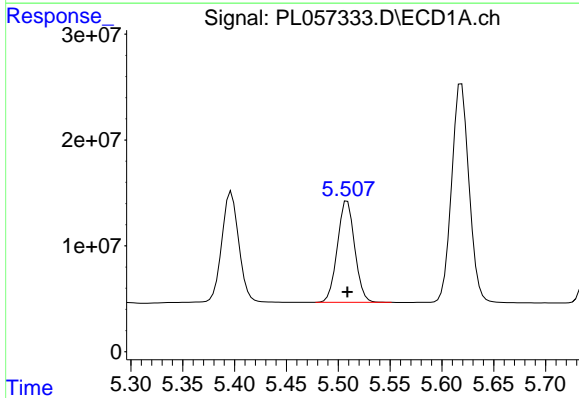


#8 Heptachlor epoxide
 R.T.: 5.187 min
 Delta R.T.: 0.017 min
 Response: 722987
 Conc: 0.06 ng/ml

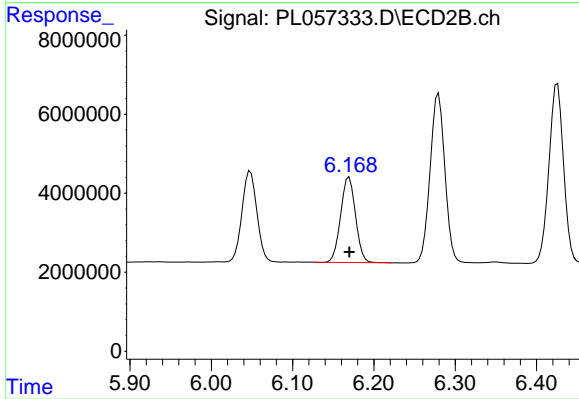
Instrument :
 ECD_L
 ClientSampled :
 RESCHK



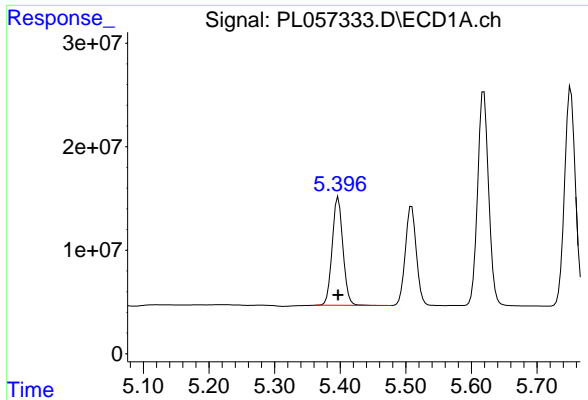
#8 Heptachlor epoxide
 R.T.: 0.000 min
 Exp R.T. : 5.815 min
 Response: 0
 Conc: N.D.



#9 Endosulfan I
 R.T.: 5.509 min
 Delta R.T.: 0.000 min
 Response: 111545894
 Conc: 9.38 ng/ml



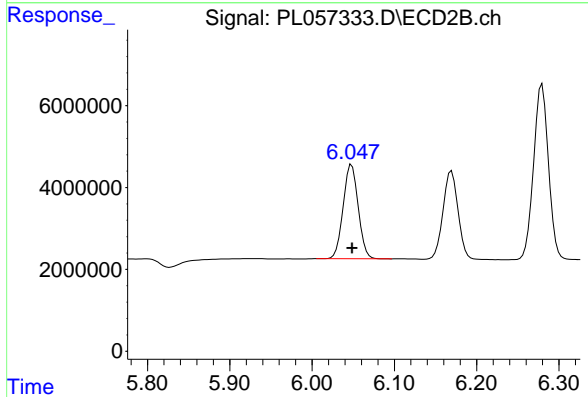
#9 Endosulfan I
 R.T.: 6.169 min
 Delta R.T.: 0.000 min
 Response: 27408601
 Conc: 9.63 ng/ml



#10 gamma-Chlordane

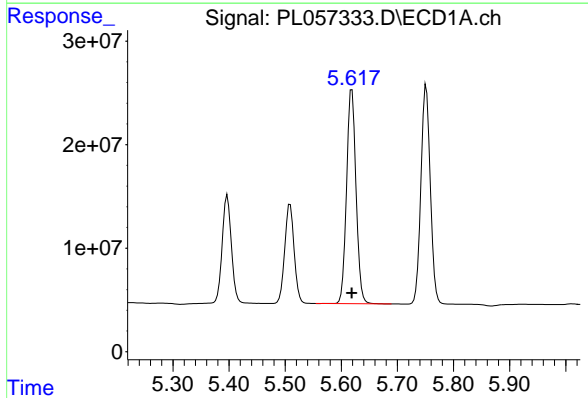
R.T.: 5.397 min
 Delta R.T.: 0.000 min
 Response: 118974995
 Conc: 9.12 ng/ml

Instrument :
 ECD_L
 ClientSampled :
 RESCHK



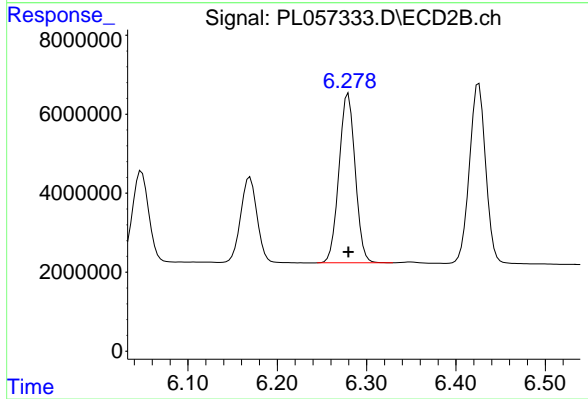
#10 gamma-Chlordane

R.T.: 6.048 min
 Delta R.T.: 0.000 min
 Response: 29276097
 Conc: 9.50 ng/ml



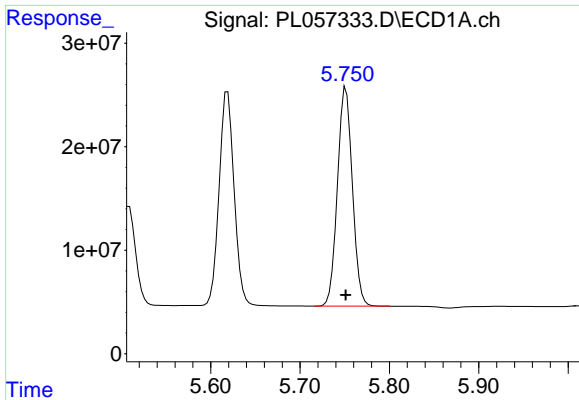
#12 4,4'-DDE

R.T.: 5.619 min
 Delta R.T.: 0.000 min
 Response: 242182492
 Conc: 19.44 ng/ml



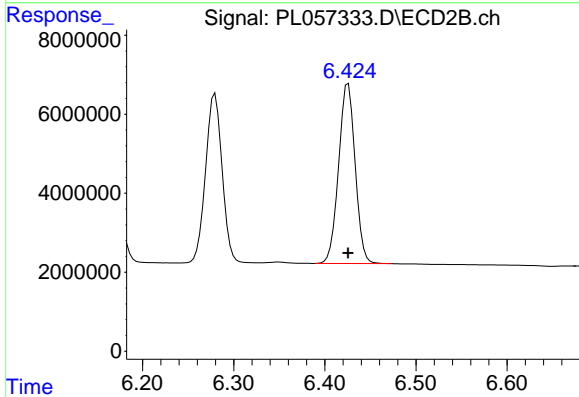
#12 4,4'-DDE

R.T.: 6.280 min
 Delta R.T.: 0.000 min
 Response: 53914925
 Conc: 18.97 ng/ml

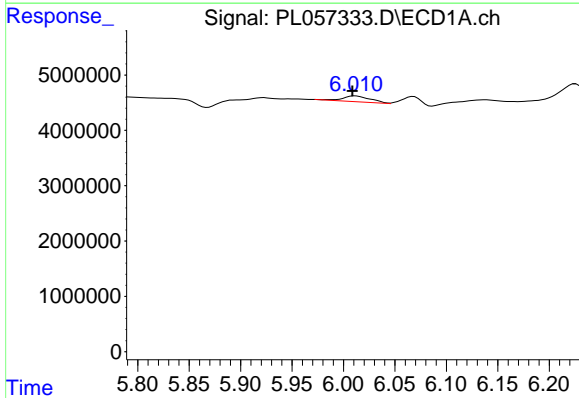


#13 Dieldrin
 R.T.: 5.751 min
 Delta R.T.: 0.000 min
 Response: 245393385
 Conc: 19.46 ng/ml

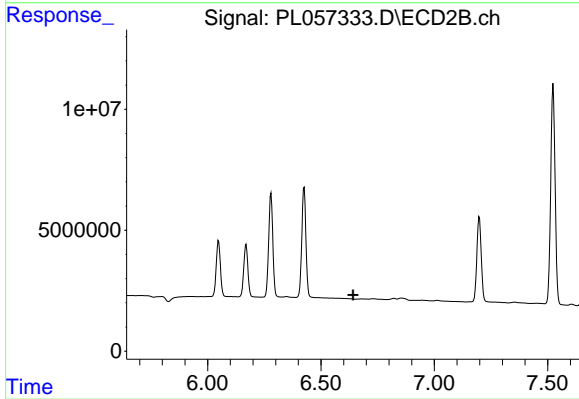
Instrument :
 ECD_L
 ClientSampled :
 RESCHK



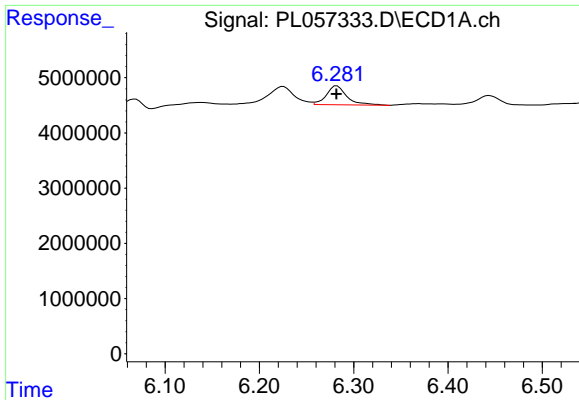
#13 Dieldrin
 R.T.: 6.426 min
 Delta R.T.: 0.000 min
 Response: 57356749
 Conc: 19.39 ng/ml



#14 Endrin
 R.T.: 6.011 min
 Delta R.T.: 0.003 min
 Response: 2020764
 Conc: 0.18 ng/ml

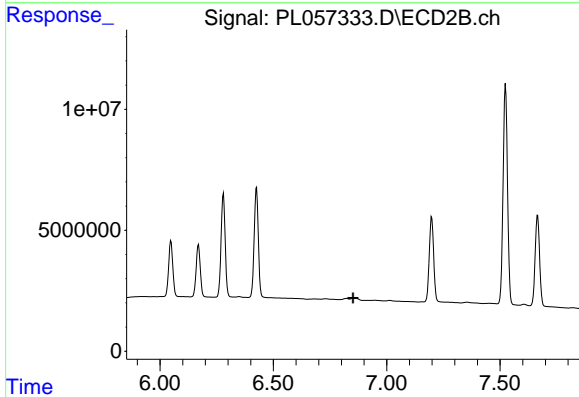


#14 Endrin
 R.T.: 0.000 min
 Exp R.T. : 6.642 min
 Response: 0
 Conc: N.D.

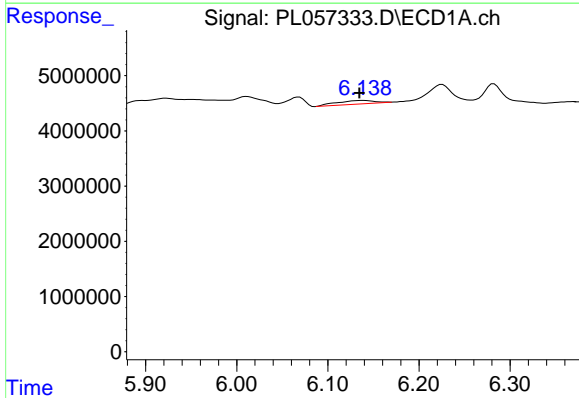


#15 Endosulfan II
 R.T.: 6.282 min
 Delta R.T.: 0.000 min
 Response: 5204372
 Conc: 0.48 ng/ml

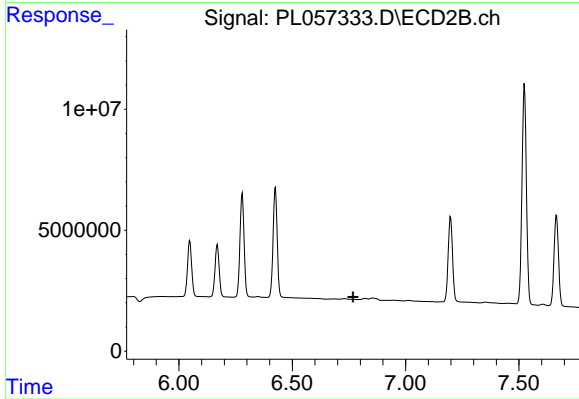
Instrument :
 ECD_L
 ClientSampleId :
 RESCHK



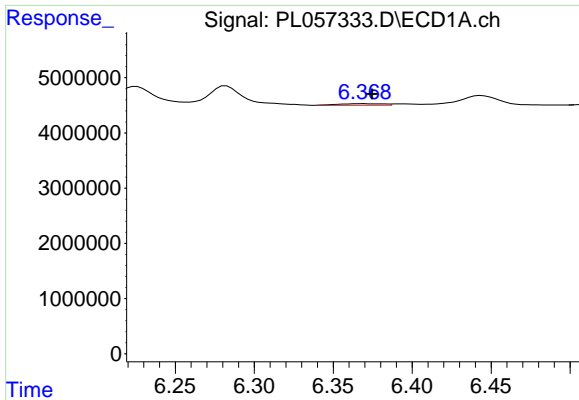
#15 Endosulfan II
 R.T.: 0.000 min
 Exp R.T. : 6.852 min
 Response: 0
 Conc: N.D.



#16 4,4'-DDD
 R.T.: 6.139 min
 Delta R.T.: 0.005 min
 Response: 1871185
 Conc: 0.19 ng/ml



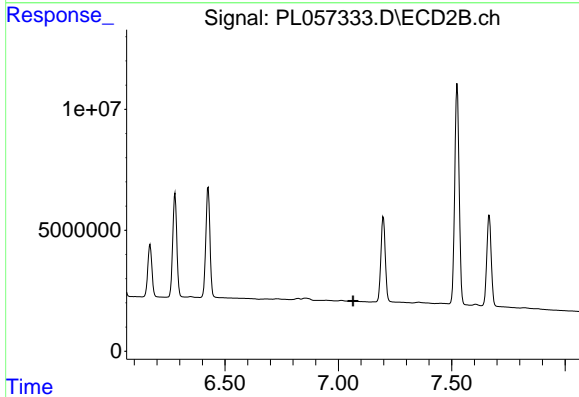
#16 4,4'-DDD
 R.T.: 0.000 min
 Exp R.T. : 6.768 min
 Response: 0
 Conc: N.D.



#17 4,4'-DDT

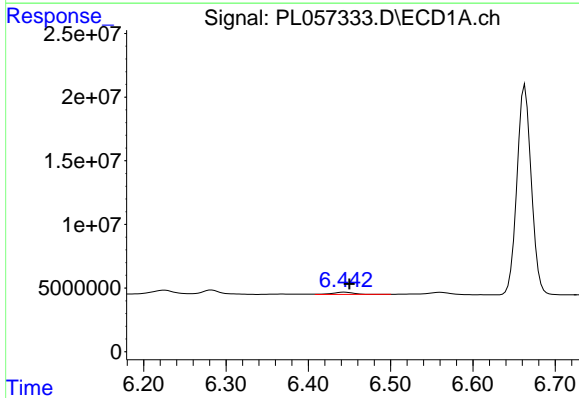
R.T.: 6.369 min
 Delta R.T.: -0.005 min
 Response: 546133
 Conc: 0.05 ng/ml

Instrument :
 ECD_L
 ClientSampled :
 RESCHK



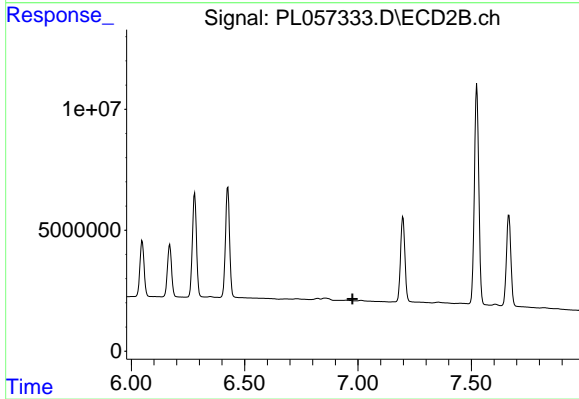
#17 4,4'-DDT

R.T.: 0.000 min
 Exp R.T. : 7.065 min
 Response: 0
 Conc: N.D.



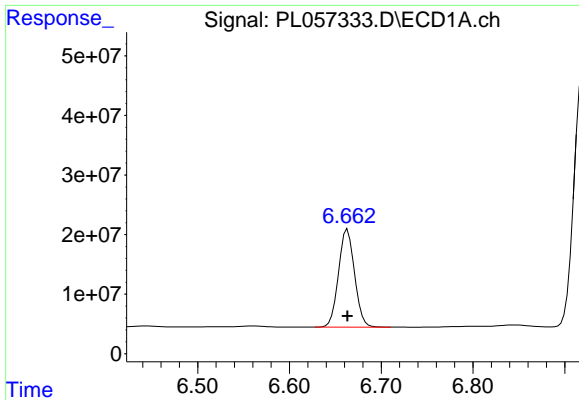
#18 Endrin aldehyde

R.T.: 6.444 min
 Delta R.T.: -0.006 min
 Response: 2972818
 Conc: 0.32 ng/ml



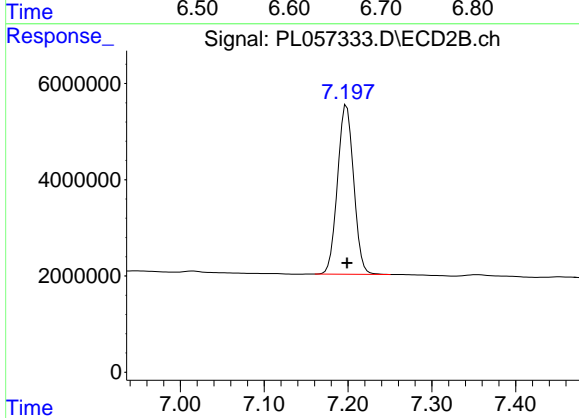
#18 Endrin aldehyde

R.T.: 0.000 min
 Exp R.T. : 6.976 min
 Response: 0
 Conc: N.D.

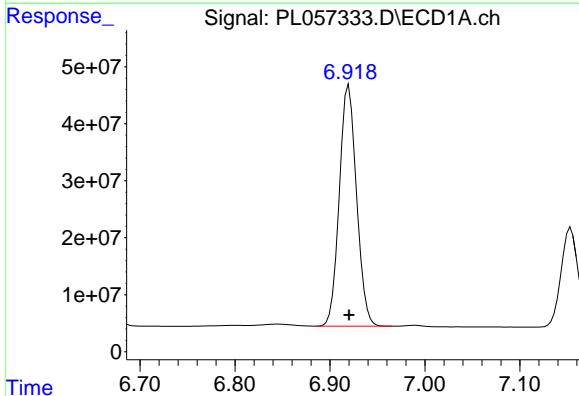


#19 Endosulfan Sulfate
 R.T.: 6.663 min
 Delta R.T.: 0.000 min
 Response: 199662088
 Conc: 19.88 ng/ml

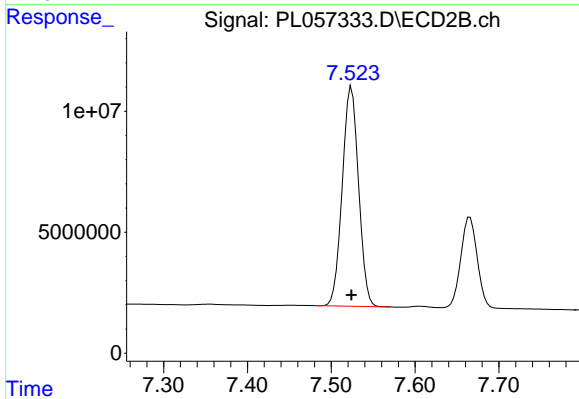
Instrument :
 ECD_L
 ClientSampleId :
 RESCHK



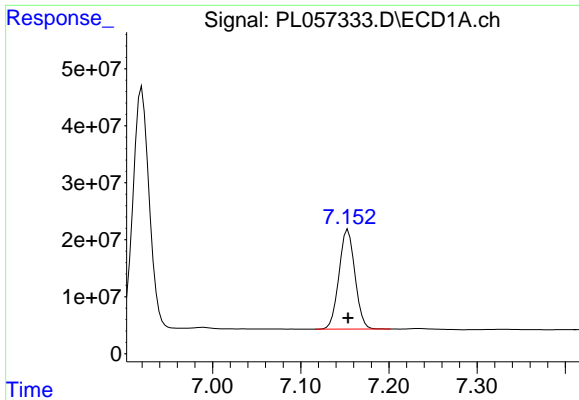
#19 Endosulfan Sulfate
 R.T.: 7.198 min
 Delta R.T.: 0.000 min
 Response: 47165105
 Conc: 19.34 ng/ml



#20 Methoxychlor
 R.T.: 6.920 min
 Delta R.T.: 0.000 min
 Response: 534801227
 Conc: 99.67 ng/ml

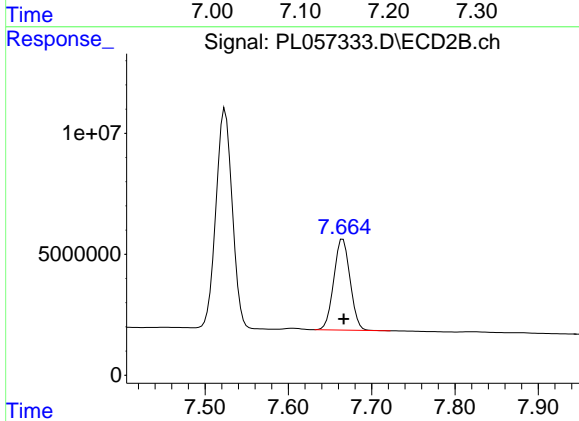


#20 Methoxychlor
 R.T.: 7.524 min
 Delta R.T.: 0.000 min
 Response: 122903853
 Conc: 94.50 ng/ml

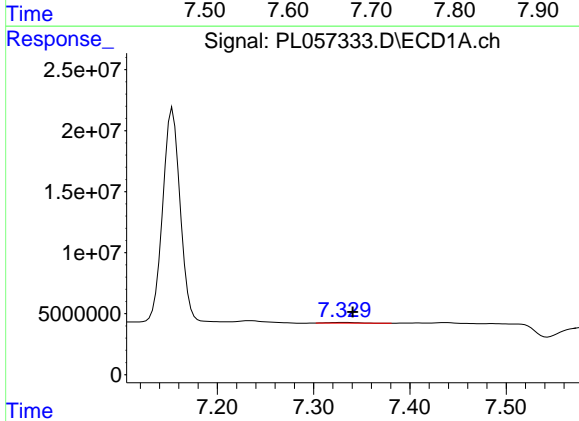


#21 Endrin ketone
 R.T.: 7.154 min
 Delta R.T.: 0.000 min
 Response: 219459451
 Conc: 19.42 ng/ml

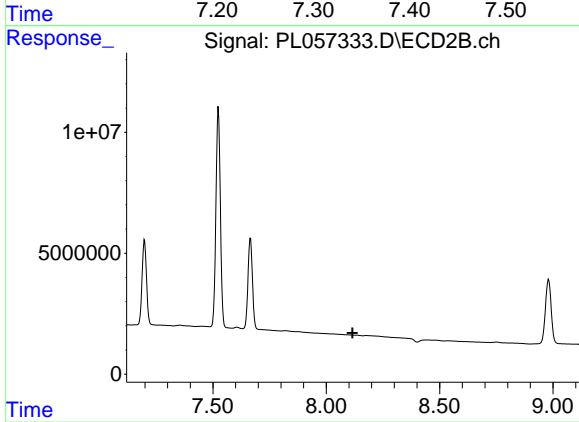
Instrument :
 ECD_L
 ClientSampleId :
 RESCHK



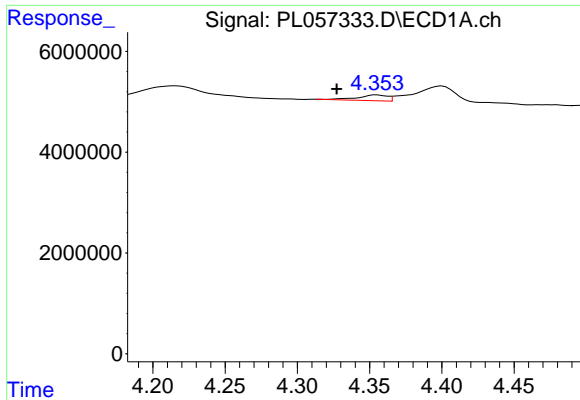
#21 Endrin ketone
 R.T.: 7.665 min
 Delta R.T.: 0.000 min
 Response: 51193454
 Conc: 19.78 ng/ml



#22 Mirex
 R.T.: 7.330 min
 Delta R.T.: -0.010 min
 Response: 1159772
 Conc: 0.14 ng/ml

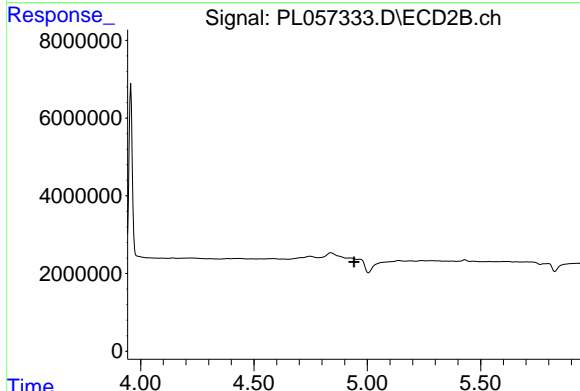


#22 Mirex
 R.T.: 0.000 min
 Exp R.T. : 8.116 min
 Response: 0
 Conc: N.D.

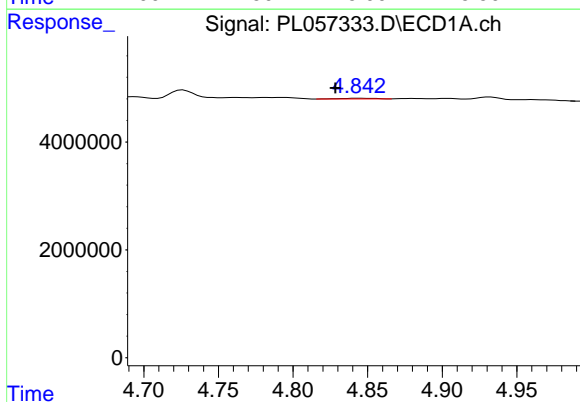


#23 Chlordane-1
 R.T.: 4.355 min
 Delta R.T.: 0.028 min
 Response: 1690497
 Conc: 5.21 ng/ml

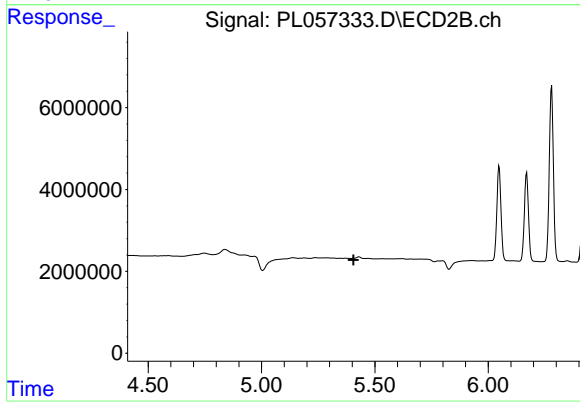
Instrument :
 ECD_L
 ClientSampled :
 RESCHK



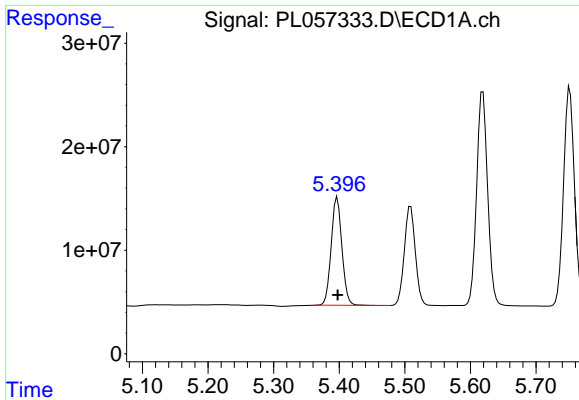
#23 Chlordane-1
 R.T.: 0.000 min
 Exp R.T. : 4.941 min
 Response: 0
 Conc: N.D.



#24 Chlordane-2
 R.T.: 4.844 min
 Delta R.T.: 0.015 min
 Response: 177099
 Conc: 0.49 ng/ml

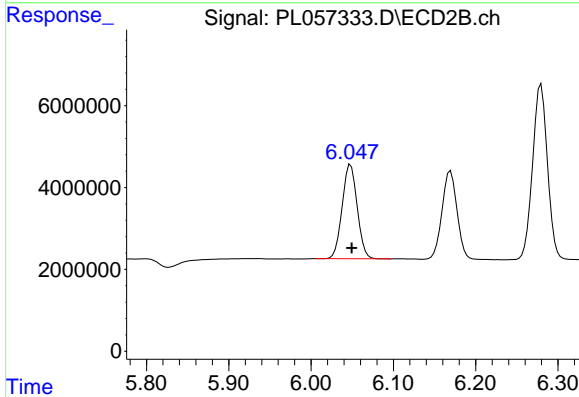


#24 Chlordane-2
 R.T.: 0.000 min
 Exp R.T. : 5.406 min
 Response: 0
 Conc: N.D.

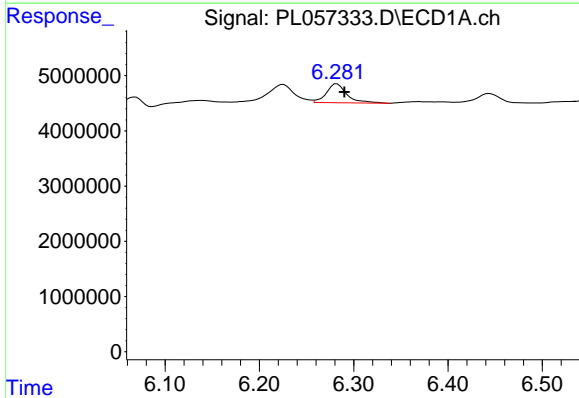


#25 Chlordane-3
 R.T.: 5.397 min
 Delta R.T.: 0.000 min
 Response: 118974995
 Conc: 105.50 ng/ml

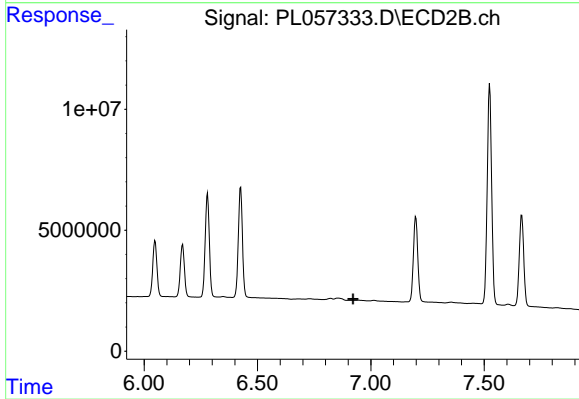
Instrument :
 ECD_L
 ClientSampleId :
 RESCHK



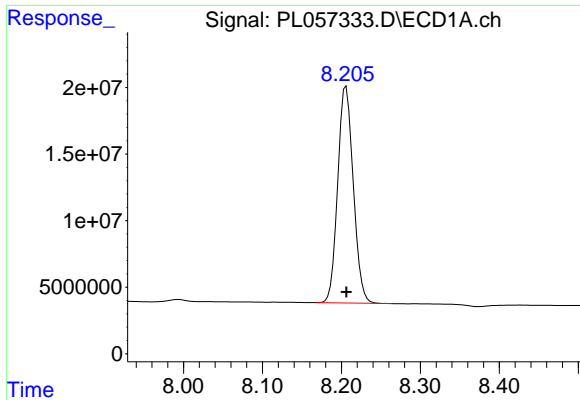
#25 Chlordane-3
 R.T.: 6.048 min
 Delta R.T.: -0.001 min
 Response: 29276097
 Conc: 77.21 ng/ml



#27 Chlordane-5
 R.T.: 6.282 min
 Delta R.T.: -0.008 min
 Response: 5204372
 Conc: 14.30 ng/ml



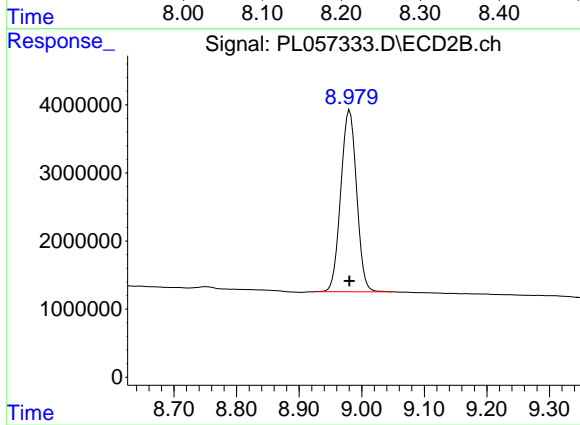
#27 Chlordane-5
 R.T.: 0.000 min
 Exp R.T. : 6.922 min
 Response: 0
 Conc: N.D.



#28 Decachlorobiphenyl

R.T.: 8.206 min
Delta R.T.: 0.000 min
Response: 222695958
Conc: 21.05 ng/ml

Instrument :
ECD_L
ClientSampleId :
RESCHK



#28 Decachlorobiphenyl

R.T.: 8.981 min
Delta R.T.: 0.000 min
Response: 47083716
Conc: 21.23 ng/ml