

Data Path : Z:\pestpcbsrv\HPCHEM1\ECD_L\Data\PL031420\
 Data File : PL057339.D
 Signal(s) : Signal #1: ECD1A.ch Signal #2: ECD2B.ch
 Acq On : 13 Mar 2020 17:52
 Operator : AJ\MA
 Sample : PCHLORICC500
 Misc :
 ALS Vial : 10 Sample Multiplier: 1

Instrument :
 ECD_L
 ClientSampleId :
 PCHLORICC500

Integration File signal 1: autoint1.e
 Integration File signal 2: autoint2.e
 Quant Time: Mar 14 00:43:23 2020
 Quant Method : Z:\pestpcbsrv\HPCHEM1\ECD_L\methods\PL031420.M
 Quant Title : GC Extractables
 QLast Update : Sat Mar 14 00:42:58 2020
 Response via : Initial Calibration
 Integrator: ChemStation

Volume Inj. : 1 µl
 Signal #1 Phase : ZB-MR2 Signal #2 Phase: ZB-MR1
 Signal #1 Info : 30M x 0.32mm x0.2 Signal #2 Info : 30M x 0.32mm x0.5µm

Compound	RT#1	RT#2	Resp#1	Resp#2	ng/ml	ng/ml

System Monitoring Compounds						
1) SA Tetrachlo...	3.458	3.957	541.6E6	106.7E6	50.000	50.000
28) SA Decachlor...	8.206	8.979	506.8E6	105.9E6	50.000	50.000
Target Compounds						
23) Chlordane-1	4.327	4.941	162.3E6	41549188	500.000	500.000
24) Chlordane-2	4.829	5.406	181.7E6	47120572	500.000	500.000
25) Chlordane-3	5.398	6.049	563.8E6	189.6E6	500.000	500.000
26) Chlordane-4	5.454	6.122	479.3E6	228.8E6	500.000	500.000
27) Chlordane-5	6.290	6.922	181.9E6	40067433	500.000	500.000

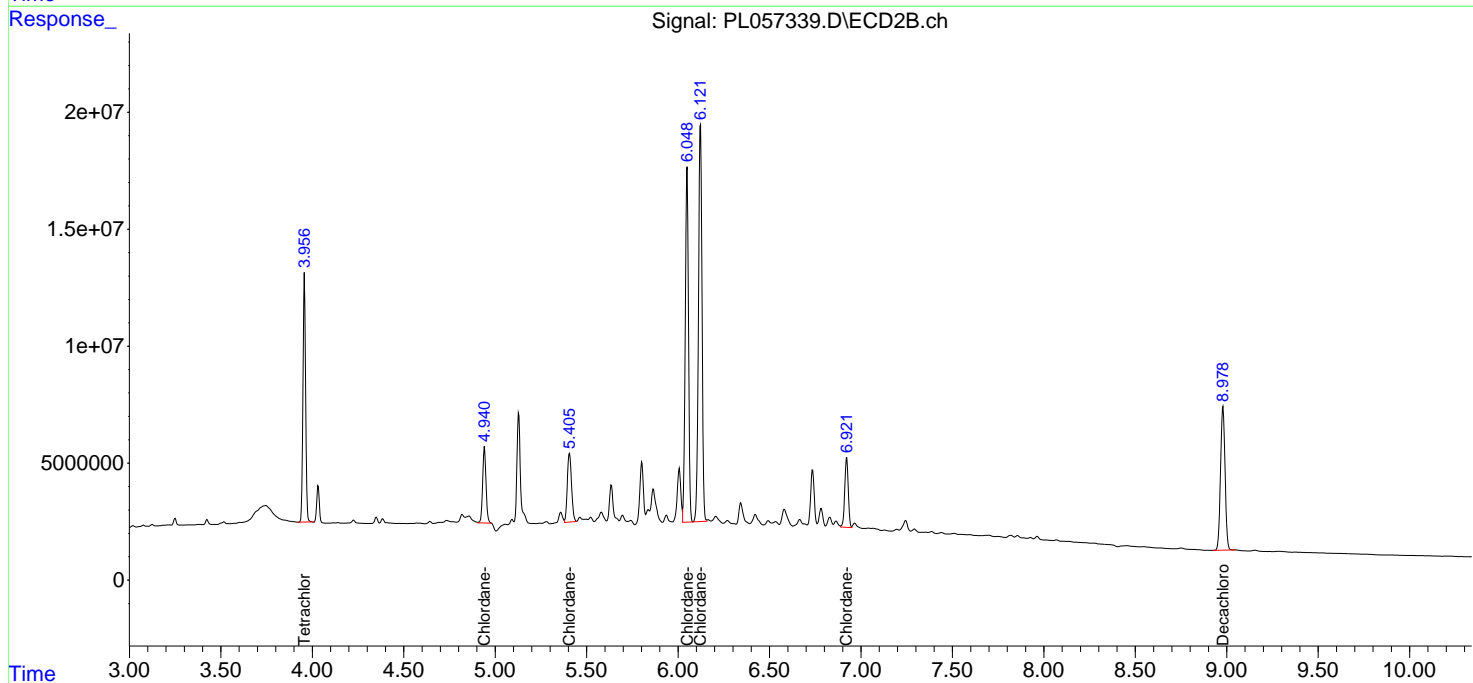
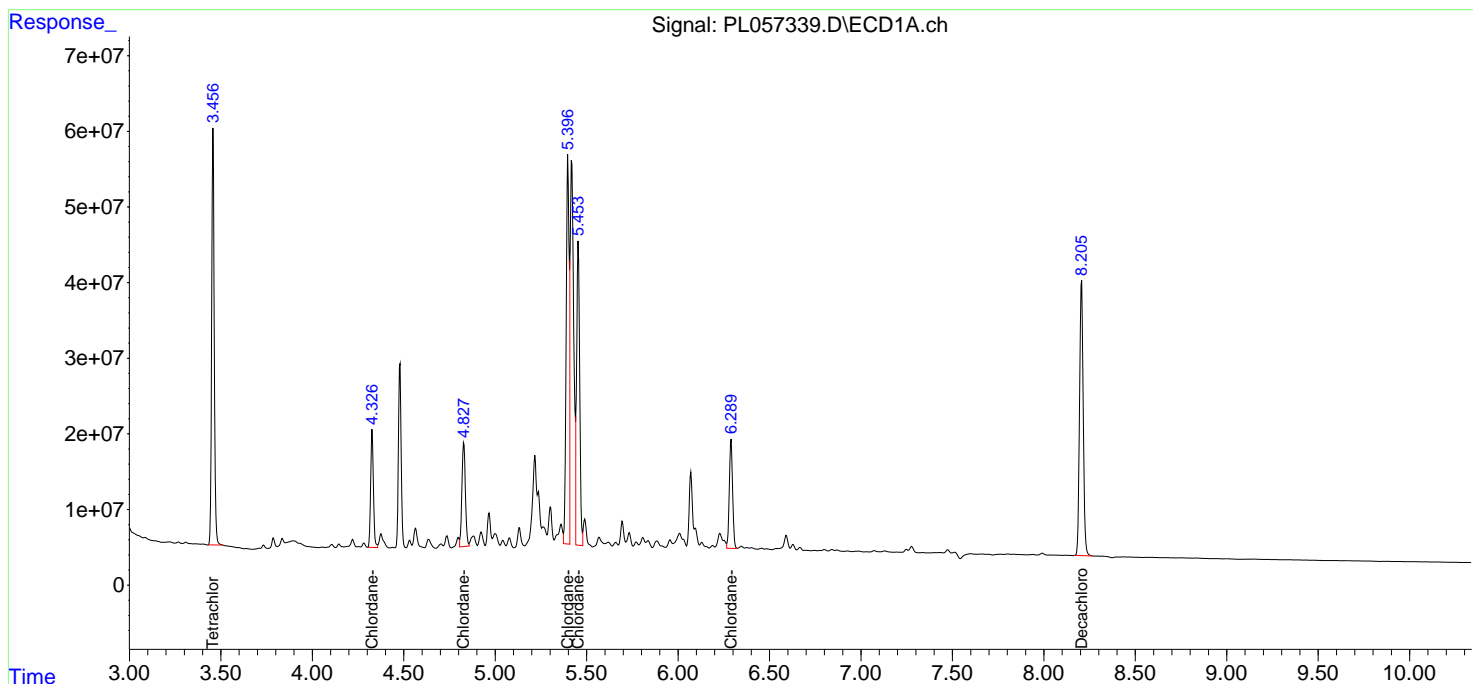
(f)=RT Delta > 1/2 Window (#)=Amounts differ by > 25% (m)=manual int.

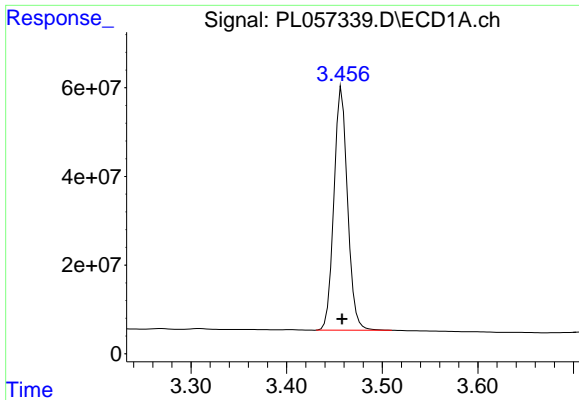
Data Path : Z:\pestpcbsrv\HPCHEM1\ECD_L\Data\PL031420\
 Data File : PL057339.D
 Signal(s) : Signal #1: ECD1A.ch Signal #2: ECD2B.ch
 Acq On : 13 Mar 2020 17:52
 Operator : AJ\MA
 Sample : PCHLORICC500
 Misc :
 ALS Vial : 10 Sample Multiplier: 1

Instrument :
 ECD_L
 ClientSampled :
 PCHLORICC500

Integration File signal 1: autoint1.e
 Integration File signal 2: autoint2.e
 Quant Time: Mar 14 00:43:23 2020
 Quant Method : Z:\pestpcbsrv\HPCHEM1\ECD_L\methods\PL031420.M
 Quant Title : GC Extractables
 QLast Update : Sat Mar 14 00:42:58 2020
 Response via : Initial Calibration
 Integrator: ChemStation

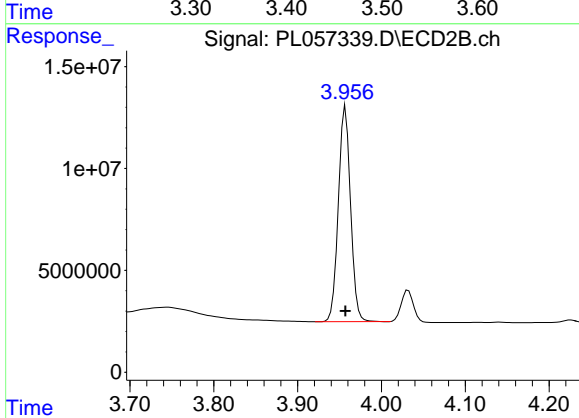
Volume Inj. : 1 µl
 Signal #1 Phase : ZB-MR2 Signal #2 Phase: ZB-MR1
 Signal #1 Info : 30M x 0.32mm x0.2 Signal #2 Info : 30M x 0.32mm x0.5µm



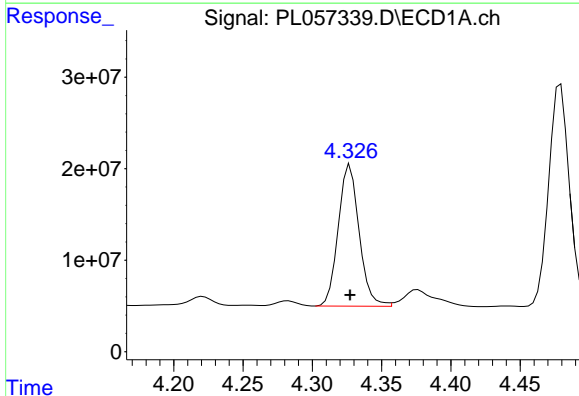


#1 Tetrachloro-m-xylene
 R.T.: 3.458 min
 Delta R.T.: 0.000 min
 Response: 541561872
 Conc: 50.00 ng/ml

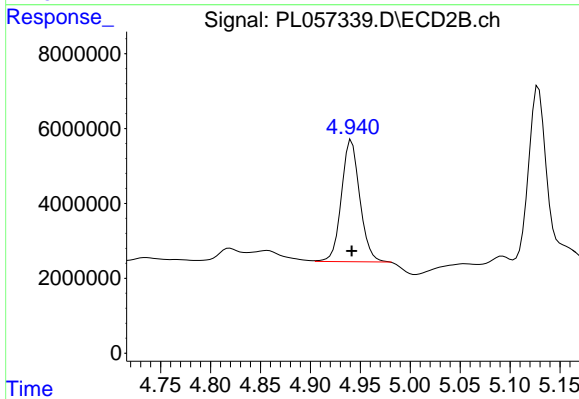
Instrument :
 ECD_L
 ClientSampleId :
 PCHLORICC500



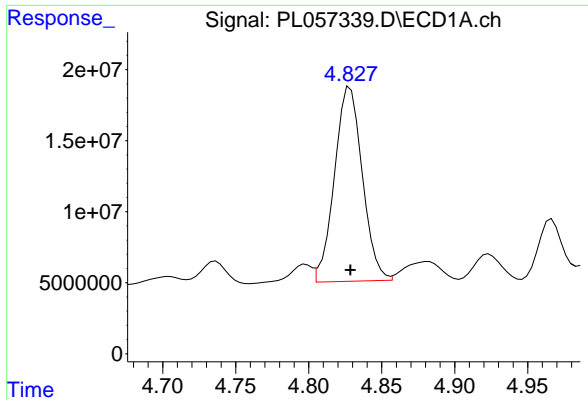
#1 Tetrachloro-m-xylene
 R.T.: 3.957 min
 Delta R.T.: 0.000 min
 Response: 106742871
 Conc: 50.00 ng/ml



#23 Chlordane-1
 R.T.: 4.327 min
 Delta R.T.: 0.000 min
 Response: 162283153
 Conc: 500.00 ng/ml



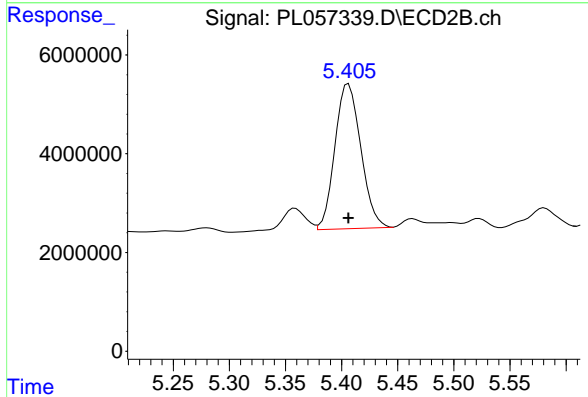
#23 Chlordane-1
 R.T.: 4.941 min
 Delta R.T.: 0.000 min
 Response: 41549188
 Conc: 500.00 ng/ml



#24 Chlordane-2

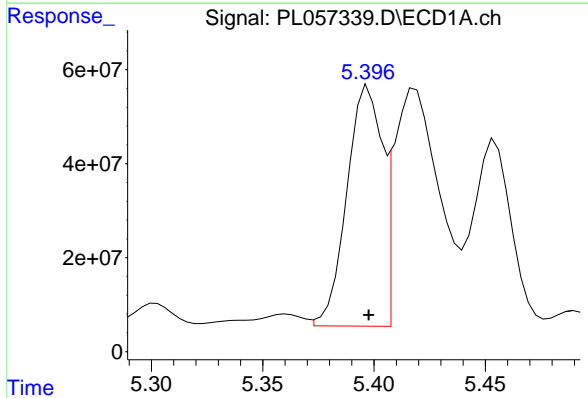
R.T.: 4.829 min
 Delta R.T.: 0.000 min
 Response: 181684783
 Conc: 500.00 ng/ml

Instrument :
 ECD_L
 ClientSampleId :
 PCHLORICC500



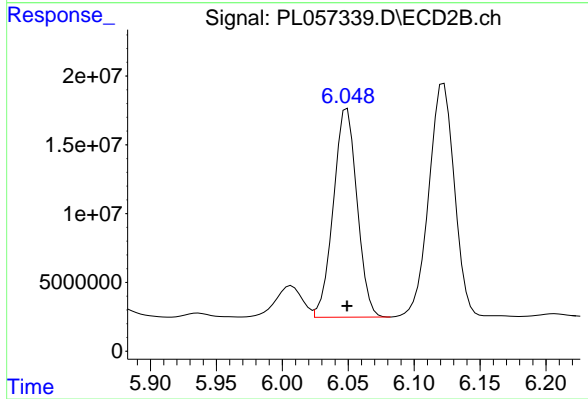
#24 Chlordane-2

R.T.: 5.406 min
 Delta R.T.: 0.000 min
 Response: 47120572
 Conc: 500.00 ng/ml



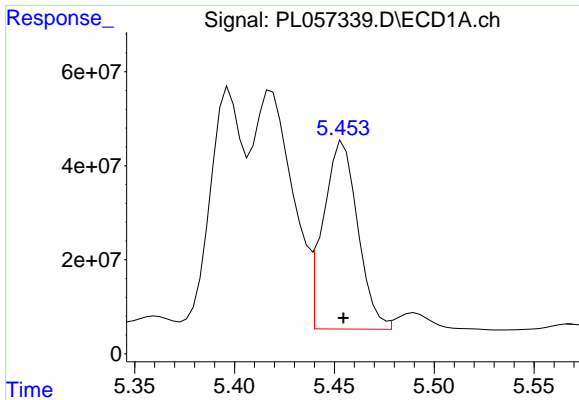
#25 Chlordane-3

R.T.: 5.398 min
 Delta R.T.: 0.000 min
 Response: 563840362
 Conc: 500.00 ng/ml



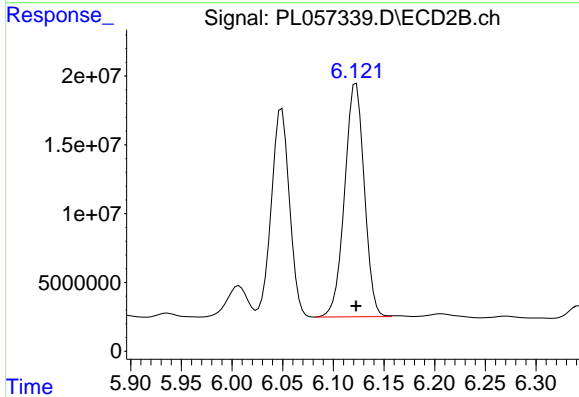
#25 Chlordane-3

R.T.: 6.049 min
 Delta R.T.: 0.000 min
 Response: 189599676
 Conc: 500.00 ng/ml

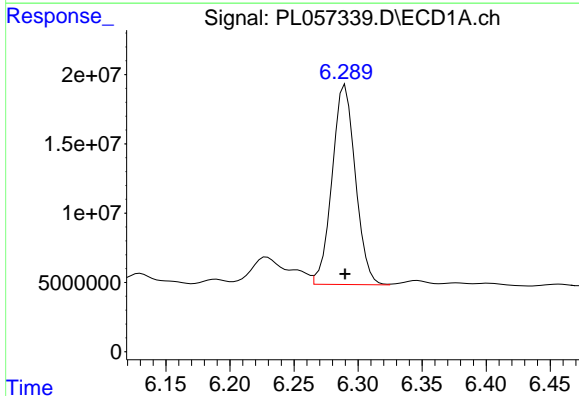


#26 Chlordane-4
 R.T.: 5.454 min
 Delta R.T.: 0.000 min
 Response: 479335039
 Conc: 500.00 ng/ml

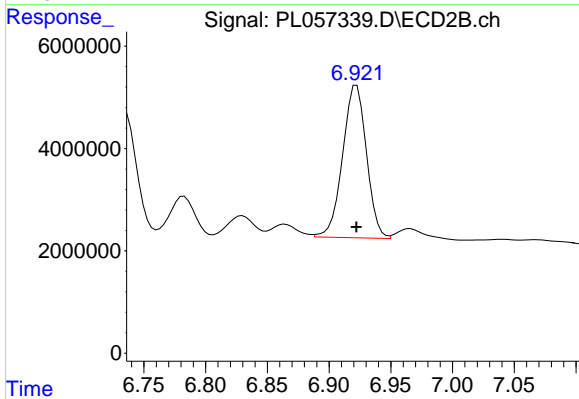
Instrument :
 ECD_L
 ClientSampleId :
 PCHLORICC500



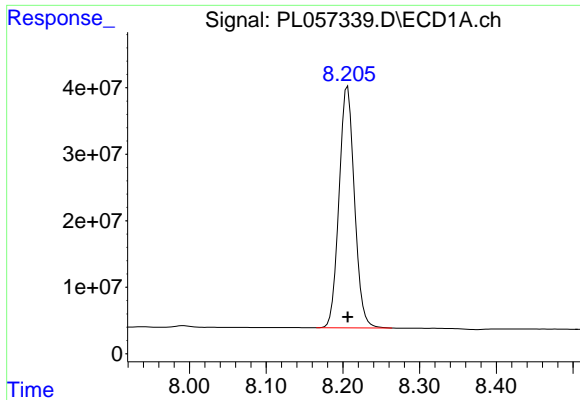
#26 Chlordane-4
 R.T.: 6.122 min
 Delta R.T.: 0.000 min
 Response: 228847696
 Conc: 500.00 ng/ml



#27 Chlordane-5
 R.T.: 6.290 min
 Delta R.T.: 0.000 min
 Response: 181928890
 Conc: 500.00 ng/ml



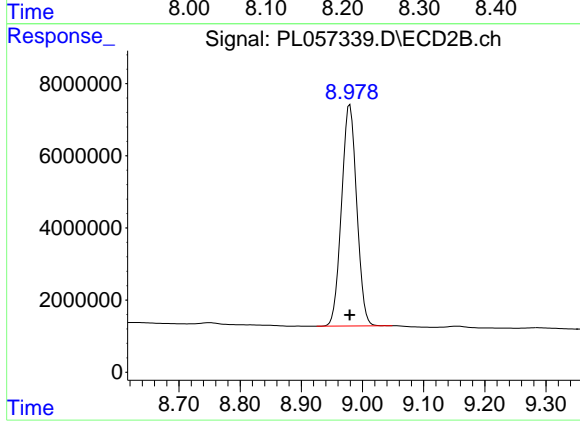
#27 Chlordane-5
 R.T.: 6.922 min
 Delta R.T.: 0.000 min
 Response: 40067433
 Conc: 500.00 ng/ml



#28 Decachlorobiphenyl

R.T.: 8.206 min
Delta R.T.: 0.000 min
Response: 506811916
Conc: 50.00 ng/ml

Instrument :
ECD_L
ClientSampled :
PCHLORICC500



#28 Decachlorobiphenyl

R.T.: 8.979 min
Delta R.T.: 0.000 min
Response: 105882796
Conc: 50.00 ng/ml