

Data Path : Z:\pestpcbsrv\HPCHEM1\ECD\_L\Data\PL031420\  
 Data File : PL057342.D  
 Signal(s) : Signal #1: ECD1A.ch Signal #2: ECD2B.ch  
 Acq On : 13 Mar 2020 18:34  
 Operator : AJ\MA  
 Sample : I.BLK  
 Misc :  
 ALS Vial : 2 Sample Multiplier: 1

Instrument :  
 ECD\_L  
 ClientSampleId :  
 I.BLK

Integration File signal 1: autoint1.e  
 Integration File signal 2: autoint2.e  
 Quant Time: Mar 14 01:03:11 2020  
 Quant Method : Z:\pestpcbsrv\HPCHEM1\ECD\_L\methods\PL031420.M  
 Quant Title : GC Extractables  
 QLast Update : Sat Mar 14 00:45:03 2020  
 Response via : Initial Calibration  
 Integrator: ChemStation

Volume Inj. : 1 µl  
 Signal #1 Phase : ZB-MR2 Signal #2 Phase: ZB-MR1  
 Signal #1 Info : 30M x 0.32mm x0.2 Signal #2 Info : 30M x 0.32mm x0.5µm

	Compound	RT#1	RT#2	Resp#1	Resp#2	ng/ml	ng/ml
-----							
System Monitoring Compounds							
1)	SA Tetrachlo...	3.459	3.957	202.6E6	47250206	21.856	21.779
28)	SA Decachlor...	8.207	8.980	235.7E6	50442666	22.278	22.749
Target Compounds							
2)	A alpha-BHC	3.894	0.000	4446726	0	0.279	N.D. #
4)	MA Heptachlor	0.000	5.138	0	10899475	N.D.	3.463 #
5)	MB Aldrin	4.733	0.000	442193	0	0.032	N.D. #
8)	B Heptachlo...	5.169	0.000	504853	0	0.039	N.D. #
10)	B gamma-Chl...	5.379f	0.000	169832	0	0.013	N.D. #
11)	B alpha-Chl...	5.430f	0.000	620639	0	0.048	N.D. #
12)	B 4,4'-DDE	5.591f	0.000	193614	0	0.016	N.D. #
13)	MA Dieldrin	5.745	0.000	307983	0	0.024	N.D. #
14)	MA Endrin	6.012	0.000	1660838	0	0.145	N.D. #
15)	B Endosulfa...	6.290	0.000	1362743	0	0.125	N.D. #
16)	A 4,4'-DDD	6.145	0.000	484555	0	0.049	N.D. #
17)	MA 4,4'-DDT	6.375	0.000	405018	0	0.041	N.D. #
18)	B Endrin al...	6.451	0.000	390535	0	0.042	N.D. #
22)	Mirex	7.340	0.000	651394	0	0.080	N.D. #
24)	Chlordane-2	4.849f	0.000	886558	0	2.440	N.D. #
25)	Chlordane-3	5.379f	0.000	169832	0	0.151	N.D. #
26)	Chlordane-4	5.430f	0.000	620639	0	0.647	N.D. #
27)	Chlordane-5	6.290	0.000	1362743	0	3.745	N.D. #

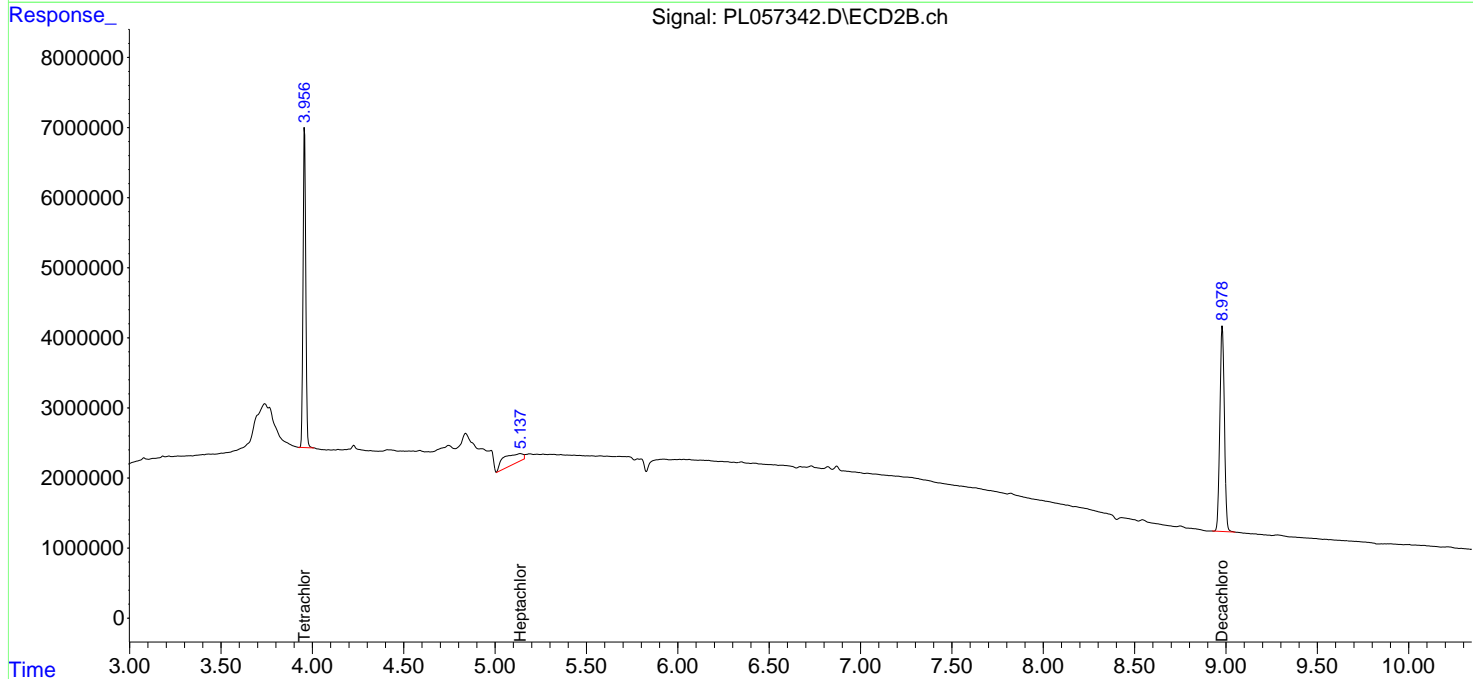
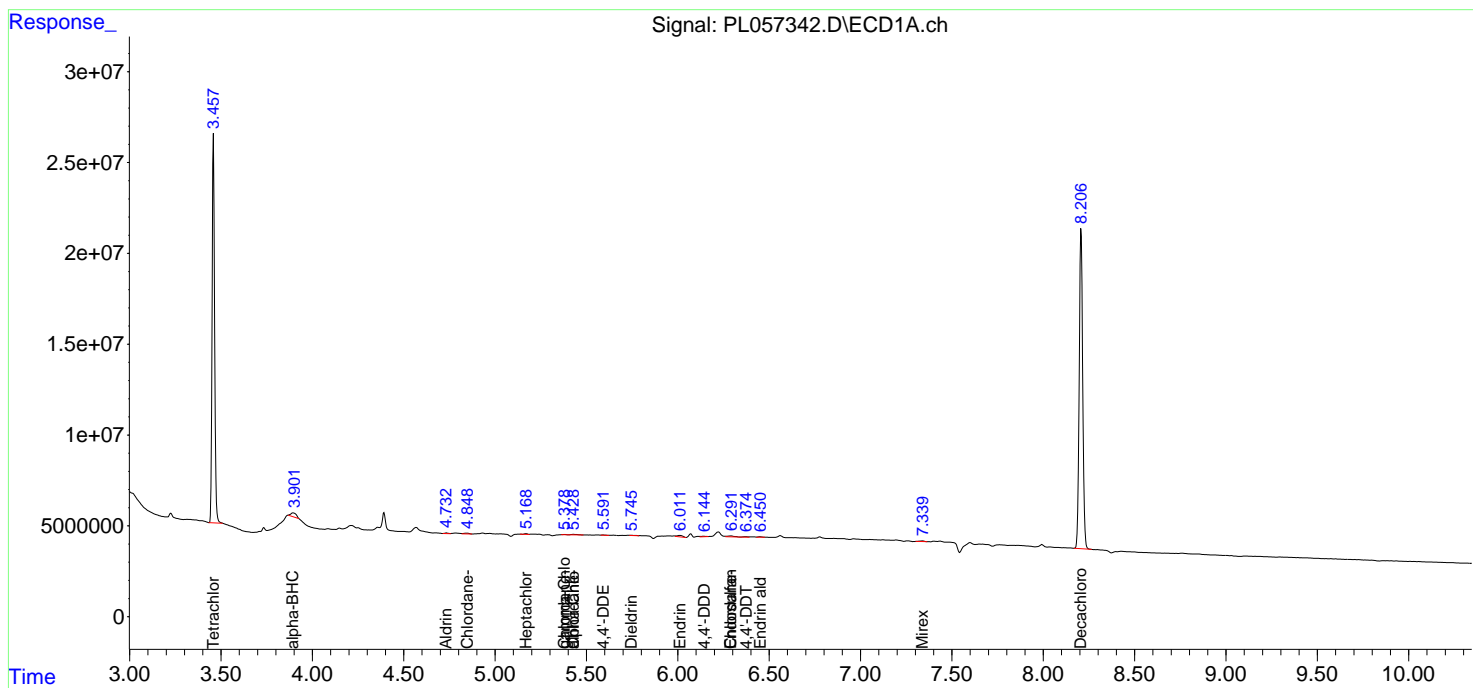
(f)=RT Delta > 1/2 Window (#)=Amounts differ by > 25% (m)=manual int.

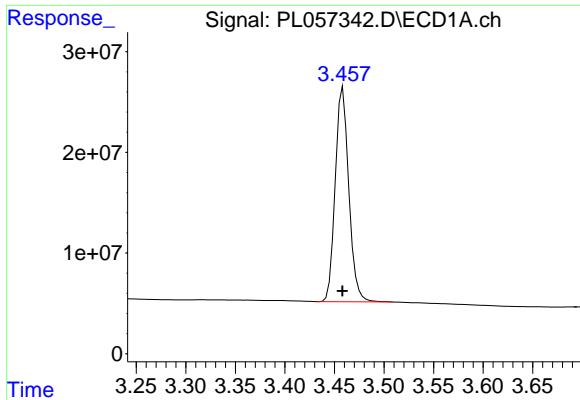
Data Path : Z:\pestpcbsrv\HPCHEM1\ECD\_L\Data\PL031420\  
 Data File : PL057342.D  
 Signal(s) : Signal #1: ECD1A.ch Signal #2: ECD2B.ch  
 Acq On : 13 Mar 2020 18:34  
 Operator : AJ\MA  
 Sample : I.BLK  
 Misc :  
 ALS Vial : 2 Sample Multiplier: 1

Instrument :  
 ECD\_L  
 ClientSampled :  
 I.BLK

Integration File signal 1: autoint1.e  
 Integration File signal 2: autoint2.e  
 Quant Time: Mar 14 01:03:11 2020  
 Quant Method : Z:\pestpcbsrv\HPCHEM1\ECD\_L\methods\PL031420.M  
 Quant Title : GC Extractables  
 QLast Update : Sat Mar 14 00:45:03 2020  
 Response via : Initial Calibration  
 Integrator: ChemStation

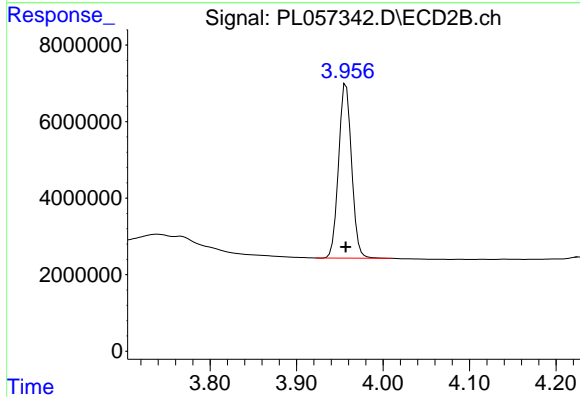
Volume Inj. : 1 µl  
 Signal #1 Phase : ZB-MR2 Signal #2 Phase: ZB-MR1  
 Signal #1 Info : 30M x 0.32mm x0.2 Signal #2 Info : 30M x 0.32mm x0.5µm



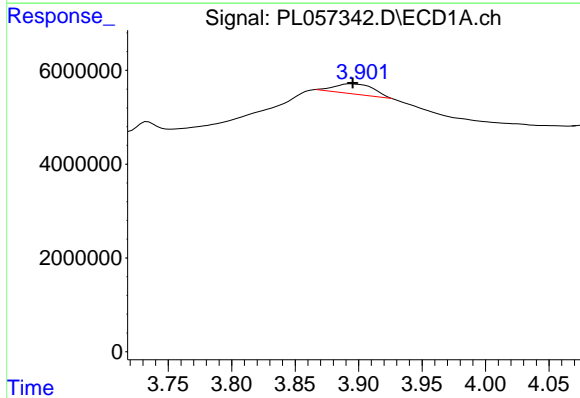


#1 Tetrachloro-m-xylene  
 R.T.: 3.459 min  
 Delta R.T.: 0.000 min  
 Response: 202592314  
 Conc: 21.86 ng/ml

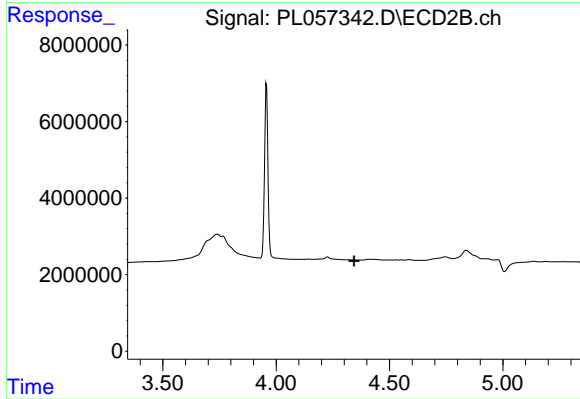
Instrument :  
 ECD\_L  
 ClientSampled :  
 I.BLK



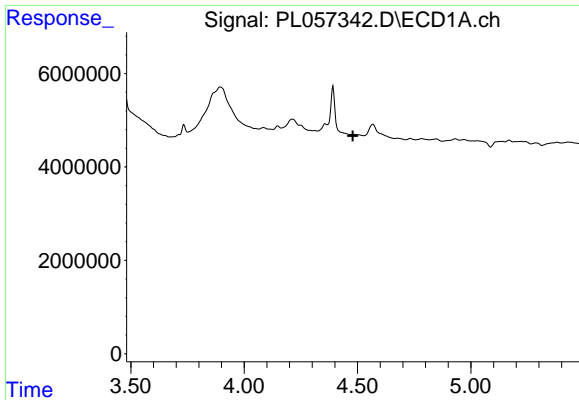
#1 Tetrachloro-m-xylene  
 R.T.: 3.957 min  
 Delta R.T.: 0.000 min  
 Response: 47250206  
 Conc: 21.78 ng/ml



#2 alpha-BHC  
 R.T.: 3.894 min  
 Delta R.T.: -0.001 min  
 Response: 4446726  
 Conc: 0.28 ng/ml

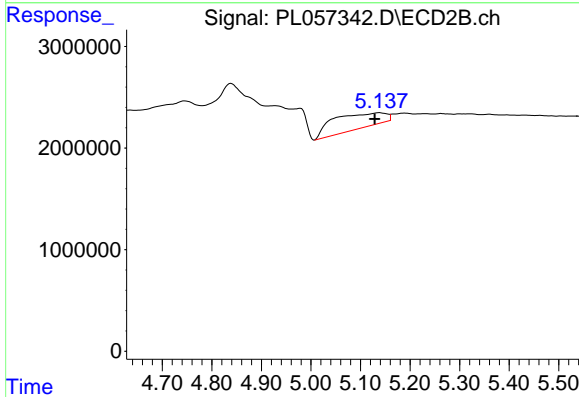


#2 alpha-BHC  
 R.T.: 0.000 min  
 Exp R.T. : 4.345 min  
 Response: 0  
 Conc: N.D.

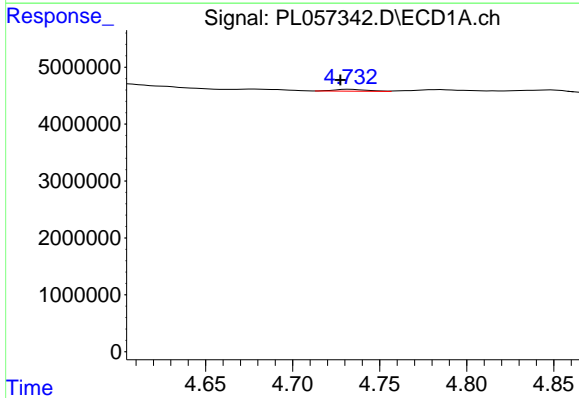


#4 Heptachlor  
 R.T.: 0.000 min  
 Exp R.T.: 4.479 min  
 Response: 0  
 Conc: N.D.

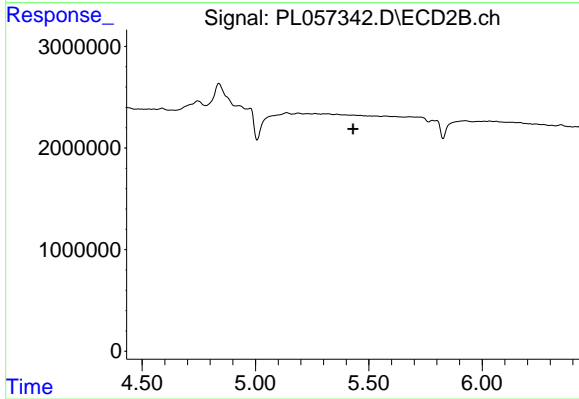
Instrument :  
 ECD\_L  
 ClientSampled :  
 I.BLK



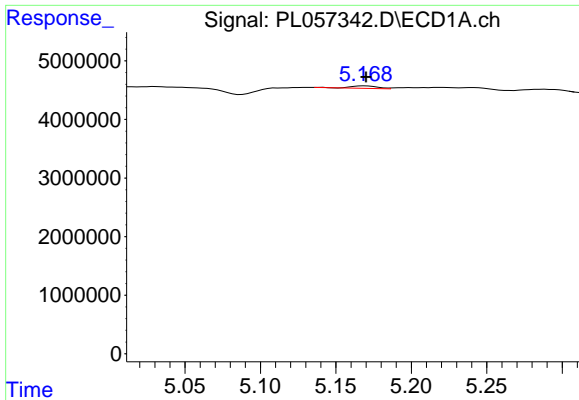
#4 Heptachlor  
 R.T.: 5.138 min  
 Delta R.T.: 0.009 min  
 Response: 10899475  
 Conc: 3.46 ng/ml



#5 Aldrin  
 R.T.: 4.733 min  
 Delta R.T.: 0.006 min  
 Response: 442193  
 Conc: 0.03 ng/ml



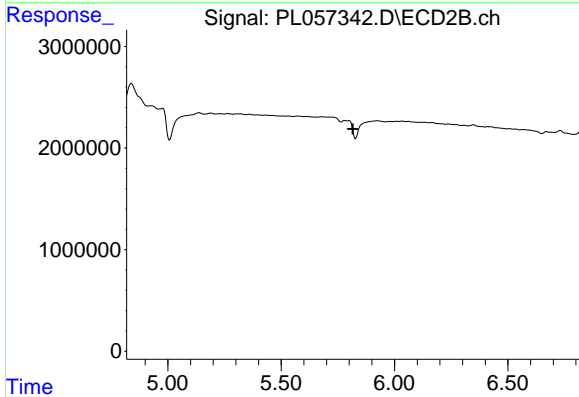
#5 Aldrin  
 R.T.: 0.000 min  
 Exp R.T.: 5.431 min  
 Response: 0  
 Conc: N.D.



#8 Heptachlor epoxide

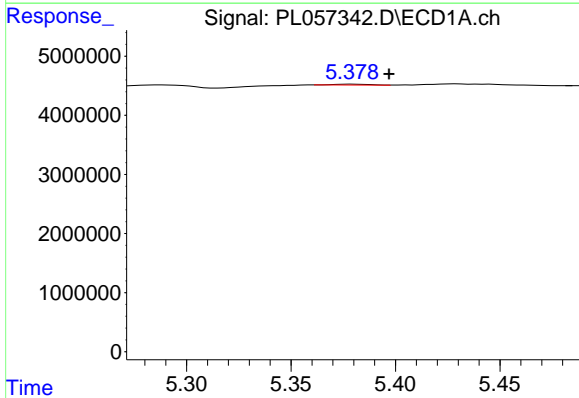
R.T.: 5.169 min  
 Delta R.T.: 0.000 min  
 Response: 504853  
 Conc: 0.04 ng/ml

Instrument :  
 ECD\_L  
 ClientSampled :  
 I.BLK



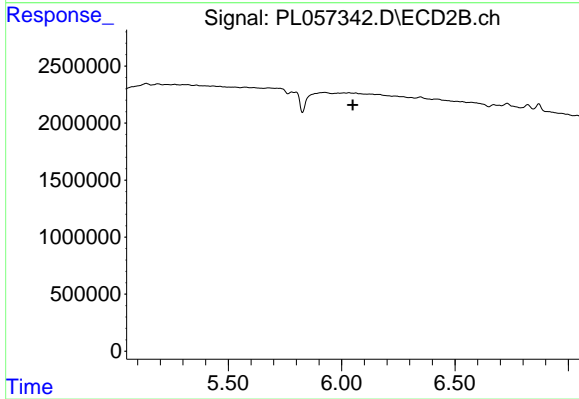
#8 Heptachlor epoxide

R.T.: 0.000 min  
 Exp R.T. : 5.815 min  
 Response: 0  
 Conc: N.D.



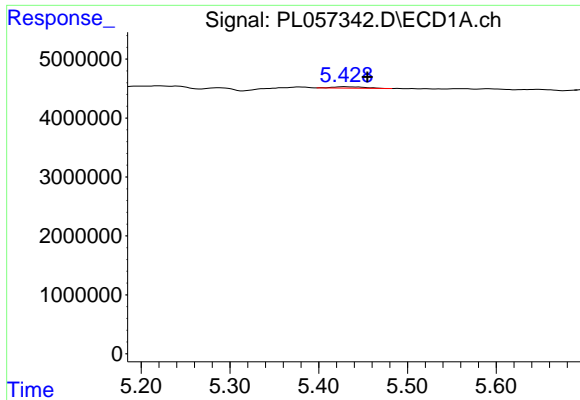
#10 gamma-Chlordane

R.T.: 5.379 min  
 Delta R.T.: -0.018 min  
 Response: 169832  
 Conc: 0.01 ng/ml



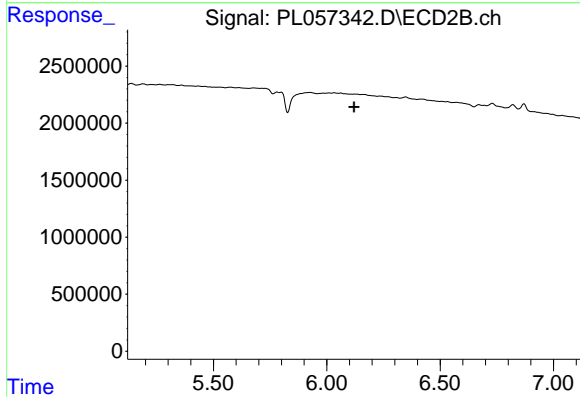
#10 gamma-Chlordane

R.T.: 0.000 min  
 Exp R.T. : 6.049 min  
 Response: 0  
 Conc: N.D.

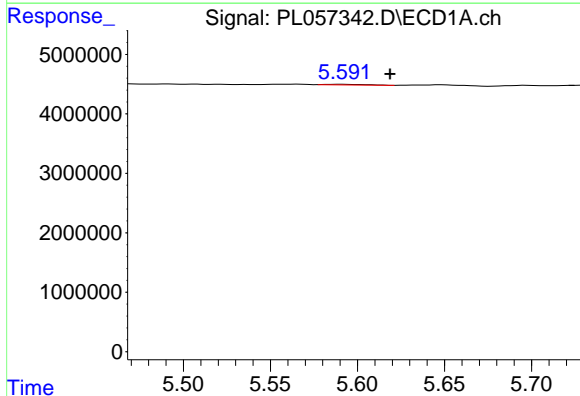


#11 alpha-Chlordane  
 R.T.: 5.430 min  
 Delta R.T.: -0.025 min  
 Response: 620639  
 Conc: 0.05 ng/ml

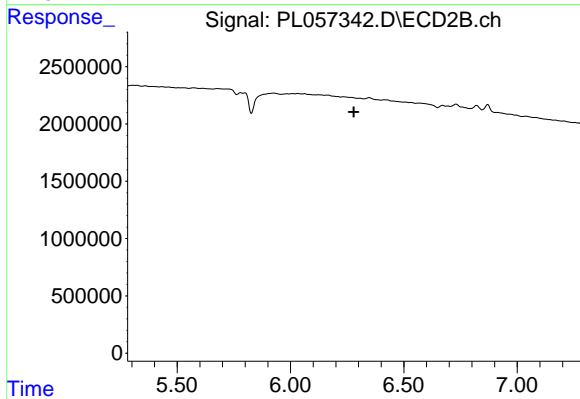
Instrument :  
 ECD\_L  
 ClientSampleId :  
 I.BLK



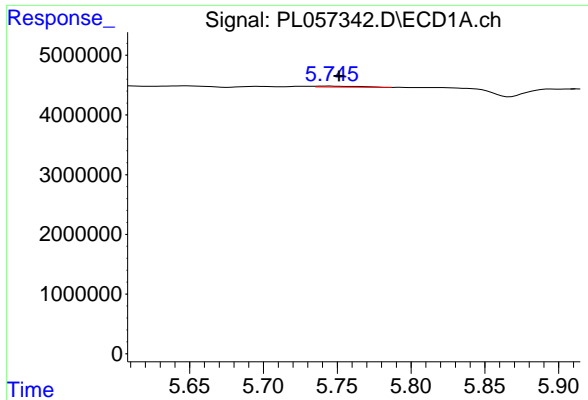
#11 alpha-Chlordane  
 R.T.: 0.000 min  
 Exp R.T. : 6.120 min  
 Response: 0  
 Conc: N.D.



#12 4,4'-DDE  
 R.T.: 5.591 min  
 Delta R.T.: -0.028 min  
 Response: 193614  
 Conc: 0.02 ng/ml

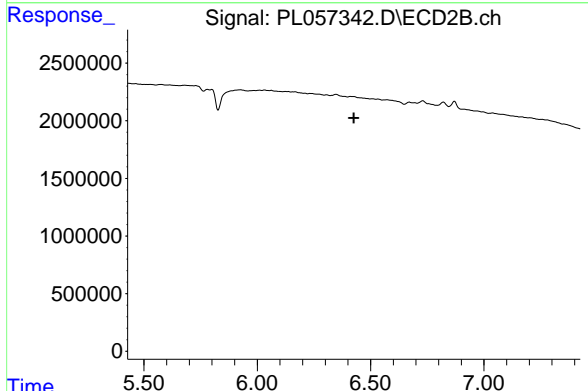


#12 4,4'-DDE  
 R.T.: 0.000 min  
 Exp R.T. : 6.280 min  
 Response: 0  
 Conc: N.D.

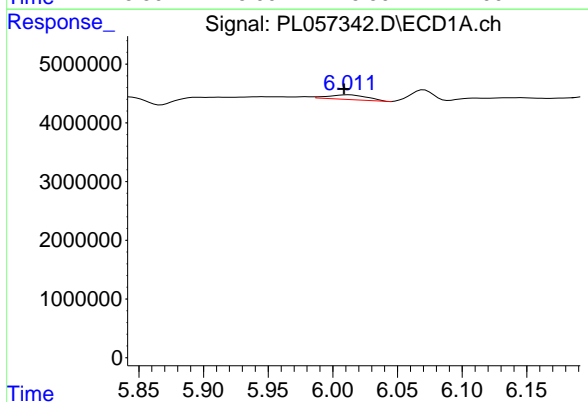


#13 Dieldrin  
 R.T.: 5.745 min  
 Delta R.T.: -0.006 min  
 Response: 307983  
 Conc: 0.02 ng/ml

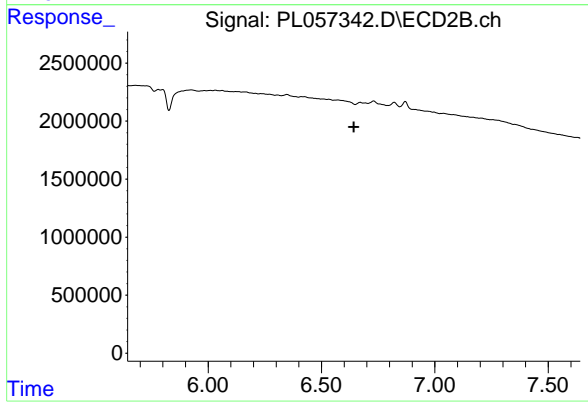
Instrument :  
 ECD\_L  
 ClientSampled :  
 I.BLK



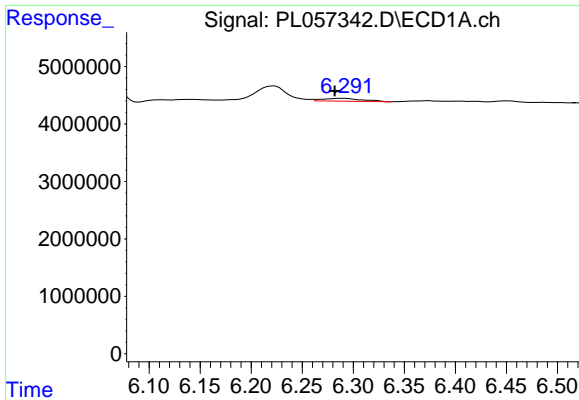
#13 Dieldrin  
 R.T.: 0.000 min  
 Exp R.T. : 6.425 min  
 Response: 0  
 Conc: N.D.



#14 Endrin  
 R.T.: 6.012 min  
 Delta R.T.: 0.004 min  
 Response: 1660838  
 Conc: 0.15 ng/ml

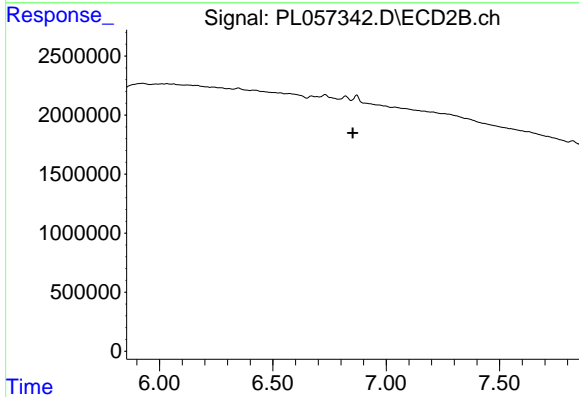


#14 Endrin  
 R.T.: 0.000 min  
 Exp R.T. : 6.642 min  
 Response: 0  
 Conc: N.D.

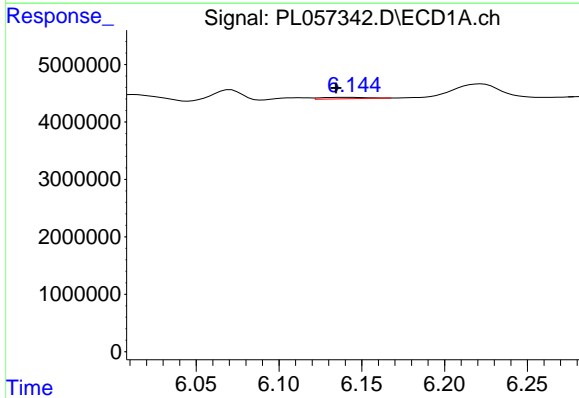


#15 Endosulfan II  
 R.T.: 6.290 min  
 Delta R.T.: 0.008 min  
 Response: 1362743  
 Conc: 0.13 ng/ml

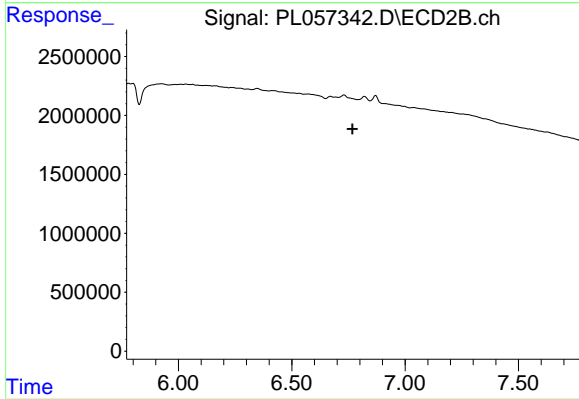
Instrument :  
 ECD\_L  
 ClientSampled :  
 I.BLK



#15 Endosulfan II  
 R.T.: 0.000 min  
 Exp R.T. : 6.852 min  
 Response: 0  
 Conc: N.D.

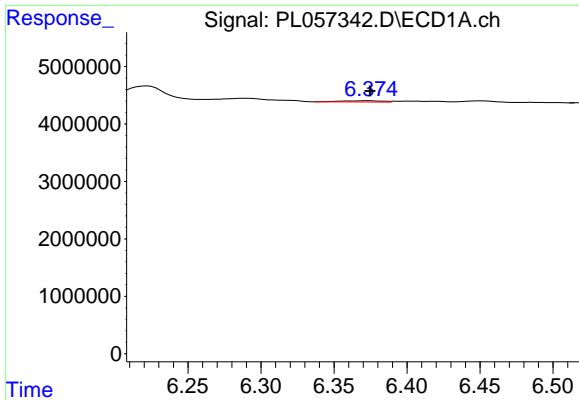


#16 4,4'-DDD  
 R.T.: 6.145 min  
 Delta R.T.: 0.011 min  
 Response: 484555  
 Conc: 0.05 ng/ml



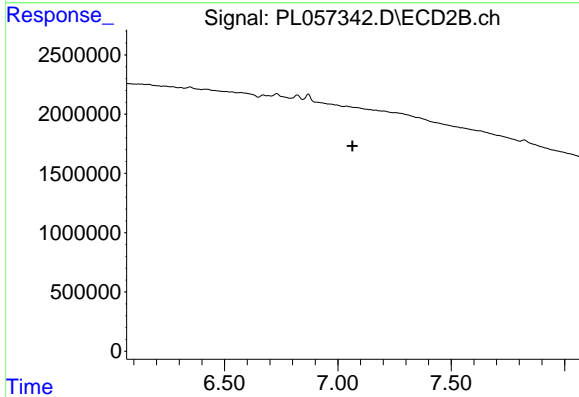
#16 4,4'-DDD  
 R.T.: 0.000 min  
 Exp R.T. : 6.768 min  
 Response: 0  
 Conc: N.D.



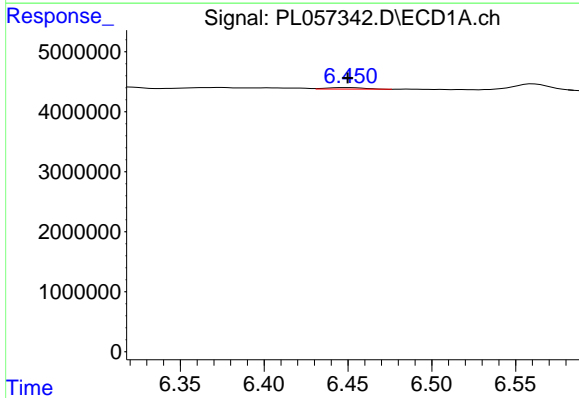


#17 4,4'-DDT  
 R.T.: 6.375 min  
 Delta R.T.: 0.000 min  
 Response: 405018  
 Conc: 0.04 ng/ml

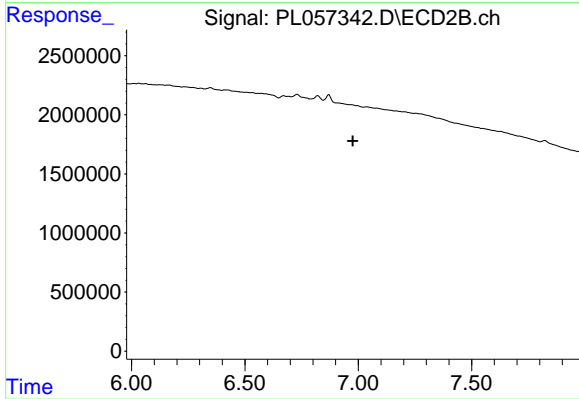
Instrument :  
 ECD\_L  
 ClientSampled :  
 I.BLK



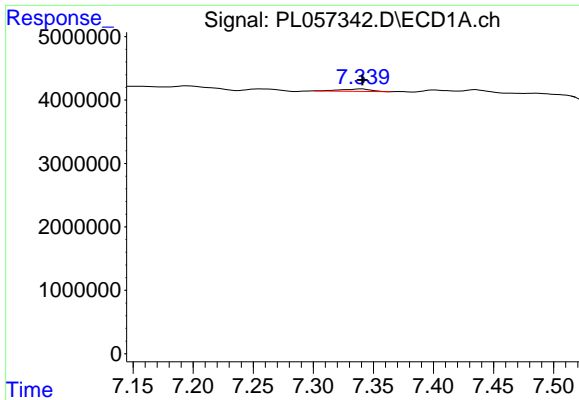
#17 4,4'-DDT  
 R.T.: 0.000 min  
 Exp R.T. : 7.065 min  
 Response: 0  
 Conc: N.D.



#18 Endrin aldehyde  
 R.T.: 6.451 min  
 Delta R.T.: 0.001 min  
 Response: 390535  
 Conc: 0.04 ng/ml

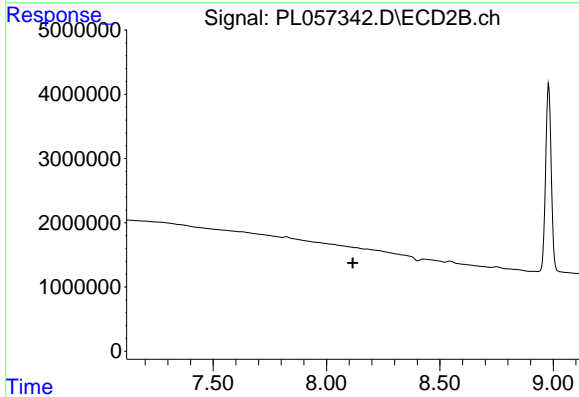


#18 Endrin aldehyde  
 R.T.: 0.000 min  
 Exp R.T. : 6.976 min  
 Response: 0  
 Conc: N.D.

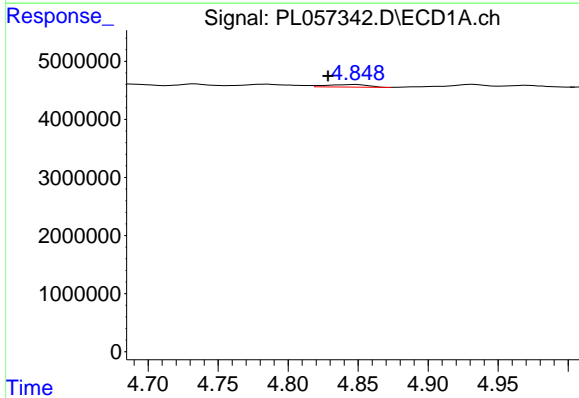


#22 Mirex  
 R.T.: 7.340 min  
 Delta R.T.: 0.000 min  
 Response: 651394  
 Conc: 0.08 ng/ml

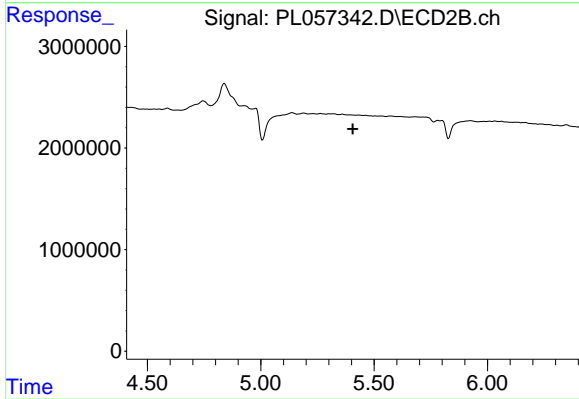
Instrument :  
 ECD\_L  
 ClientSampled :  
 I.BLK



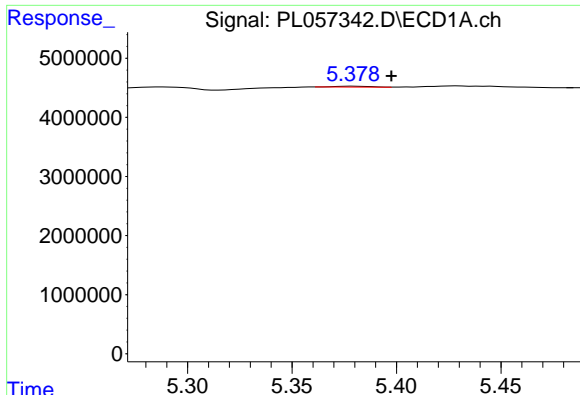
#22 Mirex  
 R.T.: 0.000 min  
 Exp R.T. : 8.116 min  
 Response: 0  
 Conc: N.D.



#24 Chlordane-2  
 R.T.: 4.849 min  
 Delta R.T.: 0.020 min  
 Response: 886558  
 Conc: 2.44 ng/ml



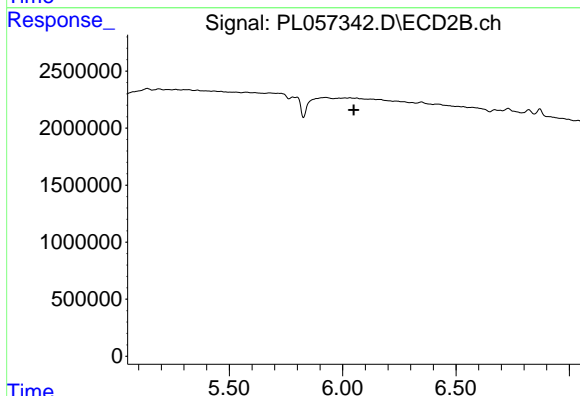
#24 Chlordane-2  
 R.T.: 0.000 min  
 Exp R.T. : 5.406 min  
 Response: 0  
 Conc: N.D.



#25 Chlordane-3

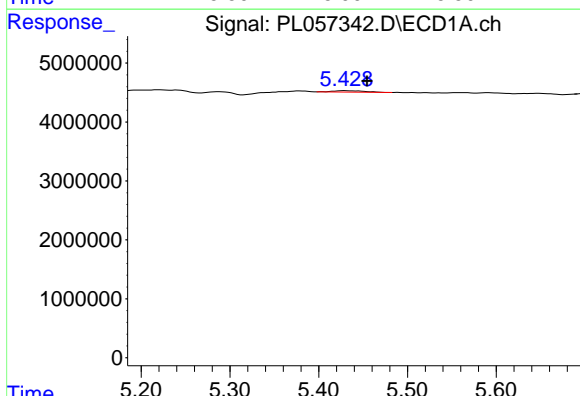
R.T.: 5.379 min  
 Delta R.T.: -0.019 min  
 Response: 169832  
 Conc: 0.15 ng/ml

Instrument :  
 ECD\_L  
 ClientSampled :  
 I.BLK



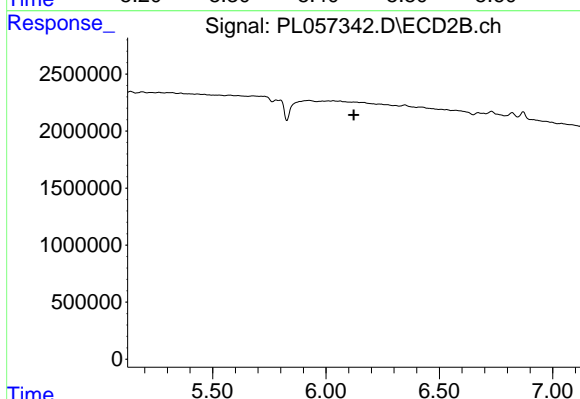
#25 Chlordane-3

R.T.: 0.000 min  
 Exp R.T. : 6.049 min  
 Response: 0  
 Conc: N.D.



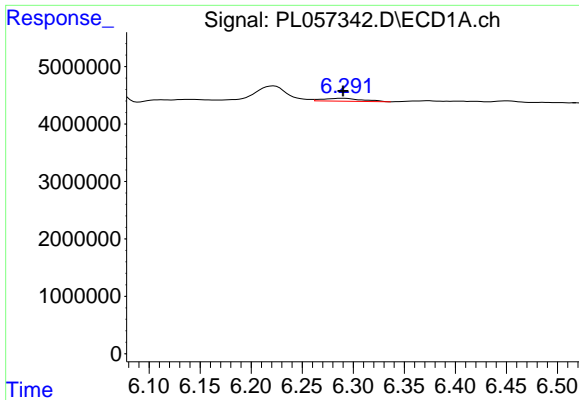
#26 Chlordane-4

R.T.: 5.430 min  
 Delta R.T.: -0.025 min  
 Response: 620639  
 Conc: 0.65 ng/ml



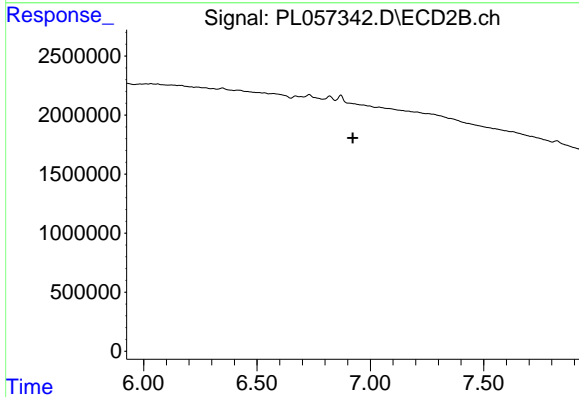
#26 Chlordane-4

R.T.: 0.000 min  
 Exp R.T. : 6.122 min  
 Response: 0  
 Conc: N.D.

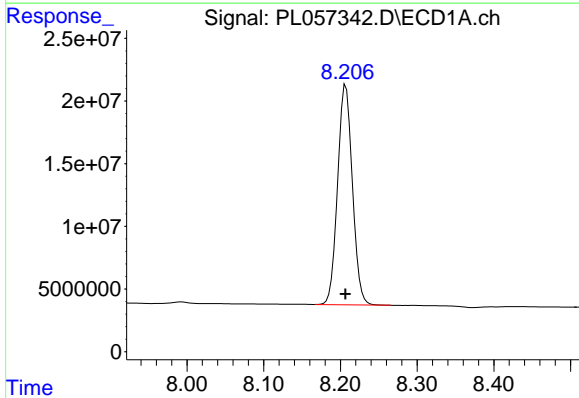


#27 Chlordane-5  
 R.T.: 6.290 min  
 Delta R.T.: 0.000 min  
 Response: 1362743  
 Conc: 3.75 ng/ml

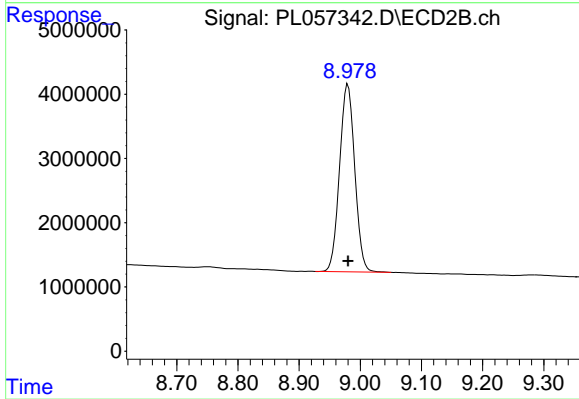
Instrument :  
 ECD\_L  
 ClientSampled :  
 I.BLK



#27 Chlordane-5  
 R.T.: 0.000 min  
 Exp R.T. : 6.922 min  
 Response: 0  
 Conc: N.D.



#28 Decachlorobiphenyl  
 R.T.: 8.207 min  
 Delta R.T.: 0.000 min  
 Response: 235731679  
 Conc: 22.28 ng/ml



#28 Decachlorobiphenyl  
 R.T.: 8.980 min  
 Delta R.T.: 0.000 min  
 Response: 50442666  
 Conc: 22.75 ng/ml