

Data Path : Z:\pestpcbsrv\HPCHEM1\ECD_L\Data\PL031422\
 Data File : PL073343.D
 Signal(s) : Signal #1: ECD1A.ch Signal #2: ECD2B.ch
 Acq On : 14 Mar 2022 18:39
 Operator : AR\AJ
 Sample : N1870-13DL 20X
 Misc :
 ALS Vial : 17 Sample Multiplier: 1

Instrument :
 ECD_L
 ClientSampleId :
 PT-TXP-WPDL

Integration File signal 1: autoint1.e
 Integration File signal 2: autoint2.e
 Quant Time: Mar 15 05:05:09 2022
 Quant Method : Z:\pestpcbsrv\HPCHEM1\ECD_L\methods\PL031122.M
 Quant Title : GC Extractables
 QLast Update : Mon Mar 14 04:12:46 2022
 Response via : Initial Calibration
 Integrator: ChemStation

Volume Inj. : 1 µl
 Signal #1 Phase : ZB-MR2 Signal #2 Phase: ZB-MR1
 Signal #1 Info : 30M x 0.32mm x0.2 Signal #2 Info : 30M x 0.32mm x0.5µm

Compound	RT#1	RT#2	Resp#1	Resp#2	ng/ml	ng/ml

System Monitoring Compounds						
1) SA Tetrachlo...	4.640	5.489	453624	2102007	1.416	1.281
28) SA Decachlor...	10.416	11.327	815516	2409061	1.604	1.347
Target Compounds						
3) MA gamma-BHC...	5.758f	0.000	20650	0	0.050	N.D. #
4) MA Heptachlor	0.000	7.098	0	115045	N.D.	0.049 #
6) B beta-BHC	0.000	6.676	0	819371	N.D.	0.786 #
7) B delta-BHC	6.427	6.948	86044	1278586	0.214	0.594 #
8) B Heptachlo...	7.087	7.930	420594	1174130	0.976	0.588 #
9) A Endosulfan I	7.509f	8.301f	321794	1436263	0.784	0.787
10) B gamma-Chl...	7.395f	8.182	1585717	822833	3.626	0.403 #
11) B alpha-Chl...	7.444	8.301f	83783	1436263	0.190	0.718 #
13) MA Dieldrin	7.769	8.599	1031002	-222807	2.475	N.D. #
14) MA Endrin	8.092f	8.860	2703992	1677516	6.969	1.090 #
16) A 4,4'-DDD	8.236	8.977	-254330	4808921	N.D.	3.294
17) MA 4,4'-DDT	8.501	0.000	402696	0	1.065	N.D. #
18) B Endrin al...	8.580	9.190	722411	368222	2.284	0.300 #
19) B Endosulfa...	8.793	9.426	415981	7933004	0.985	5.033 #
21) B Endrin ke...	9.320	9.906f	-47614	2510591	N.D.	1.521
22) Mirex	9.494f	10.380f	440820	1246245	0.935	0.917
23) Chlordane-1	0.000	6.849	0	750548	N.D.	10.987 #
25) Chlordane-3	7.395f	8.182	1585717	822833	38.833	3.035 #
26) Chlordane-4	7.444	8.301f	83783	1436263	1.890	4.336 #
27) Chlordane-5	8.416f	9.130f	2067589	-150264	126.263	N.D. #

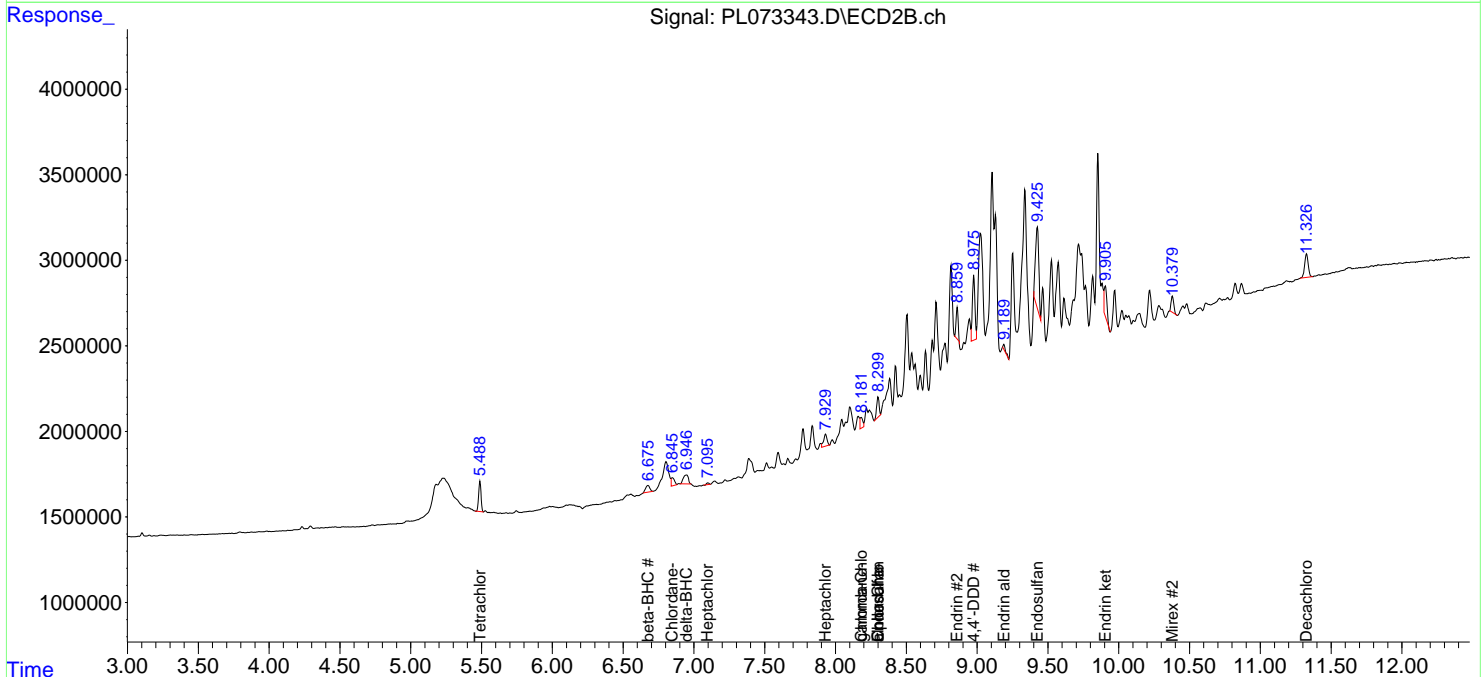
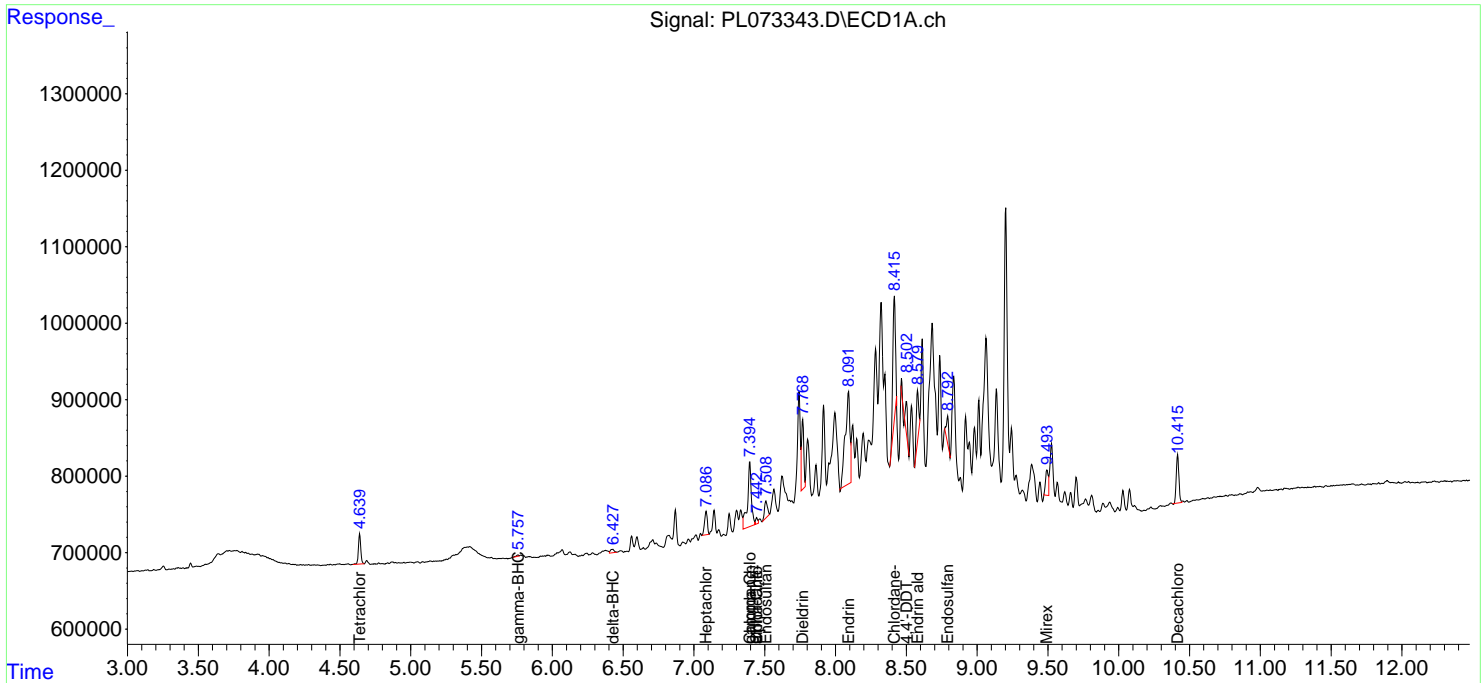
(f)=RT Delta > 1/2 Window (#)=Amounts differ by > 25% (m)=manual int.

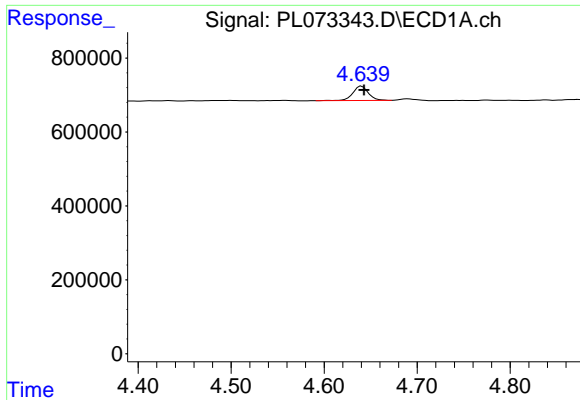
Data Path : Z:\pestpcbsrv\HPCHEM1\ECD_L\Data\PL0731422\
 Data File : PL073343.D
 Signal(s) : Signal #1: ECD1A.ch Signal #2: ECD2B.ch
 Acq On : 14 Mar 2022 18:39
 Operator : AR\AJ
 Sample : N1870-13DL 20X
 Misc :
 ALS Vial : 17 Sample Multiplier: 1

Instrument :
 ECD_L
 ClientSampleId :
 PT-TXP-WPDL

Integration File signal 1: autoint1.e
 Integration File signal 2: autoint2.e
 Quant Time: Mar 15 05:05:09 2022
 Quant Method : Z:\pestpcbsrv\HPCHEM1\ECD_L\methods\PL031122.M
 Quant Title : GC Extractables
 QLast Update : Mon Mar 14 04:12:46 2022
 Response via : Initial Calibration
 Integrator: ChemStation

Volume Inj. : 1 µl
 Signal #1 Phase : ZB-MR2 Signal #2 Phase: ZB-MR1
 Signal #1 Info : 30M x 0.32mm x0.2 Signal #2 Info : 30M x 0.32mm x0.5µm

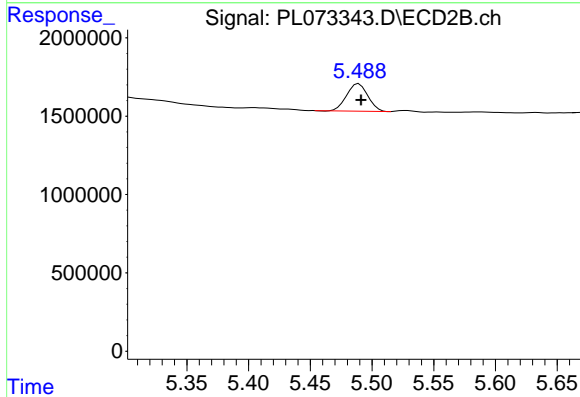




#1 Tetrachloro-m-xylene

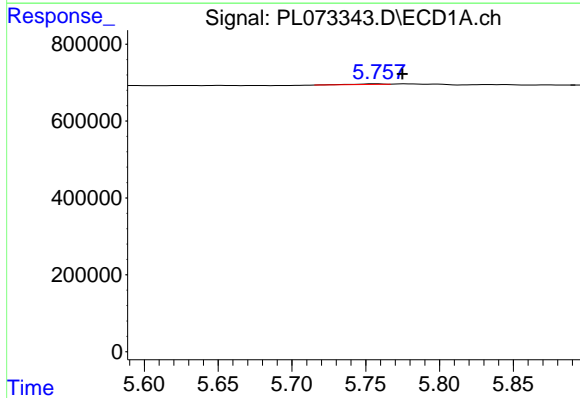
R.T.: 4.640 min
 Delta R.T.: -0.003 min
 Response: 453624
 Conc: 1.42 ng/ml

Instrument : ECD_L
 ClientSampleId : PT-TXP-WPDL



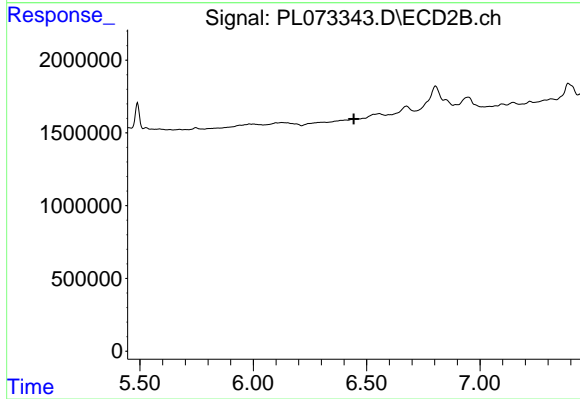
#1 Tetrachloro-m-xylene

R.T.: 5.489 min
 Delta R.T.: -0.002 min
 Response: 2102007
 Conc: 1.28 ng/ml



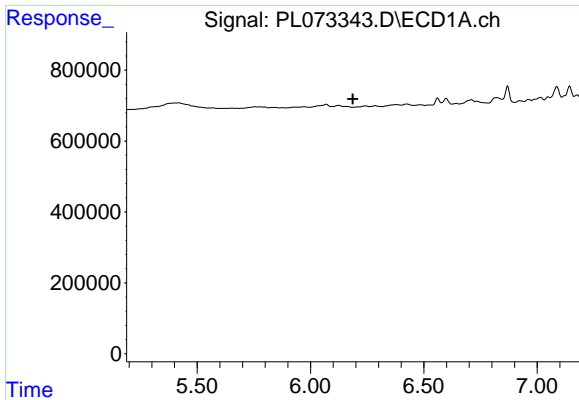
#3 gamma-BHC (Lindane)

R.T.: 5.758 min
 Delta R.T.: -0.017 min
 Response: 20650
 Conc: 0.05 ng/ml



#3 gamma-BHC (Lindane)

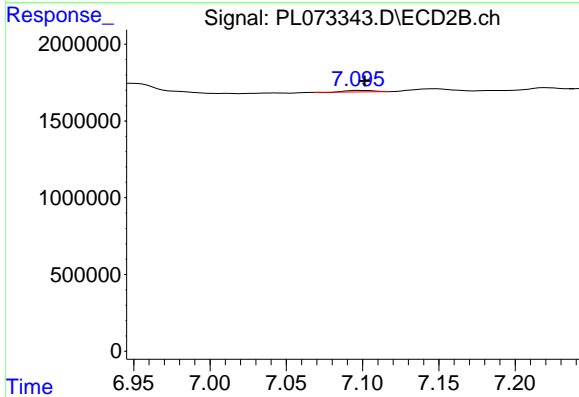
R.T.: 0.000 min
 Exp R.T.: 6.443 min
 Response: 0
 Conc: N.D.



#4 Heptachlor

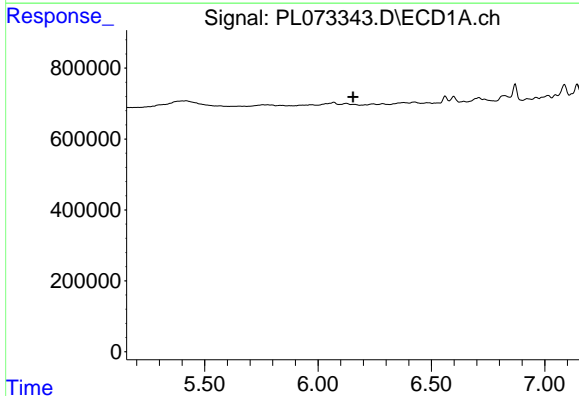
R.T.: 0.000 min
 Exp R.T.: 6.187 min
 Response: 0
 Conc: N.D.

Instrument :
 ECD_L
 ClientSampleId :
 PT-TXP-WPDL



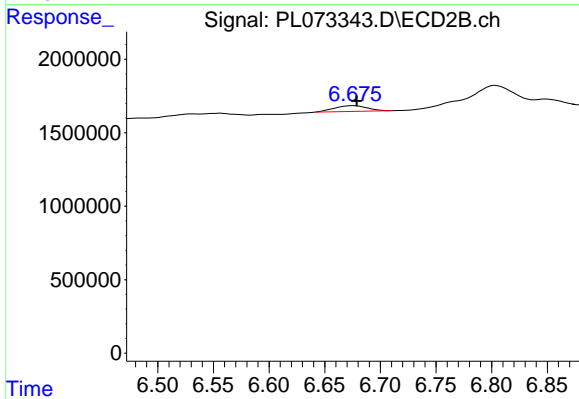
#4 Heptachlor

R.T.: 7.098 min
 Delta R.T.: -0.004 min
 Response: 115045
 Conc: 0.05 ng/ml



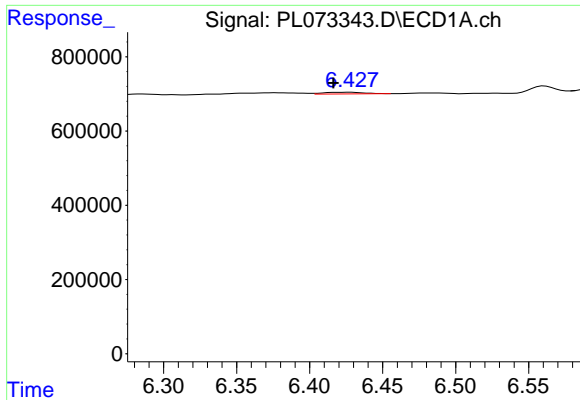
#6 beta-BHC

R.T.: 0.000 min
 Exp R.T.: 6.155 min
 Response: 0
 Conc: N.D.



#6 beta-BHC

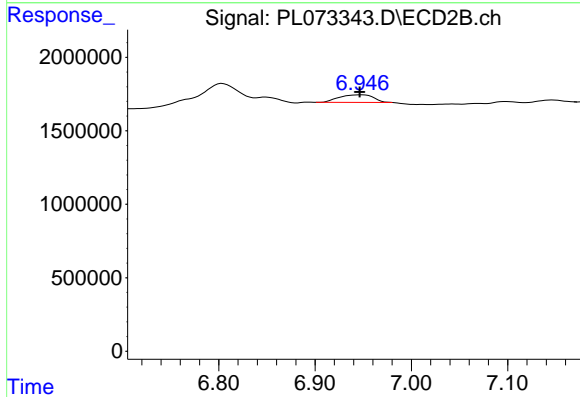
R.T.: 6.676 min
 Delta R.T.: -0.003 min
 Response: 819371
 Conc: 0.79 ng/ml



#7 delta-BHC

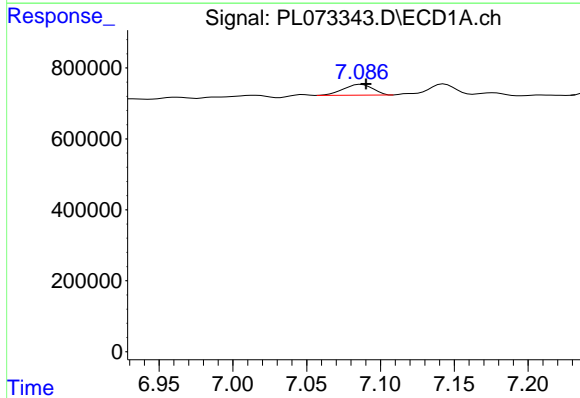
R.T.: 6.427 min
 Delta R.T.: 0.011 min
 Response: 86044
 Conc: 0.21 ng/ml

Instrument :
 ECD_L
 ClientSampleId :
 PT-TXP-WPDL



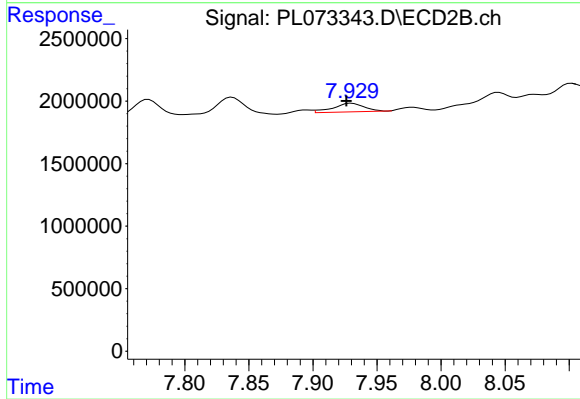
#7 delta-BHC

R.T.: 6.948 min
 Delta R.T.: 0.002 min
 Response: 1278586
 Conc: 0.59 ng/ml



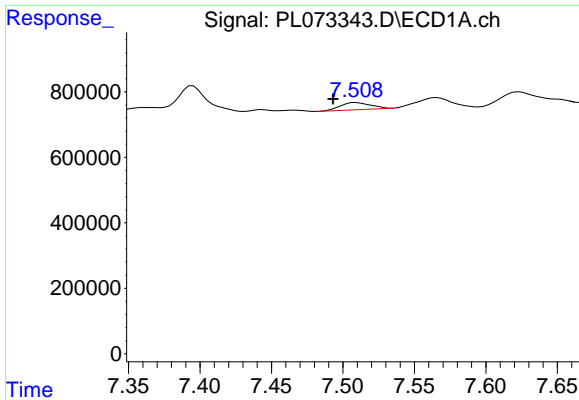
#8 Heptachlor epoxide

R.T.: 7.087 min
 Delta R.T.: -0.003 min
 Response: 420594
 Conc: 0.98 ng/ml



#8 Heptachlor epoxide

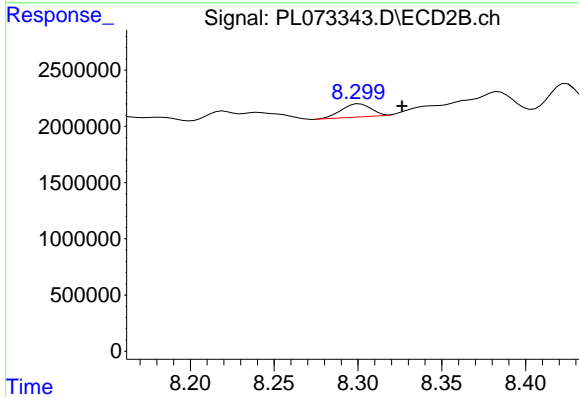
R.T.: 7.930 min
 Delta R.T.: 0.004 min
 Response: 1174130
 Conc: 0.59 ng/ml



#9 Endosulfan I

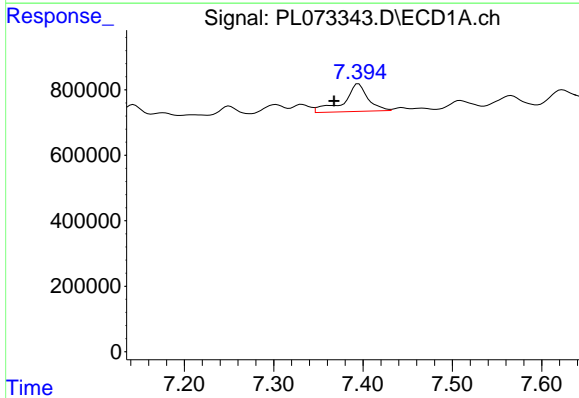
R.T.: 7.509 min
 Delta R.T.: 0.016 min
 Response: 321794
 Conc: 0.78 ng/ml

Instrument :
 ECD_L
 ClientSampleId :
 PT-TXP-WPDL



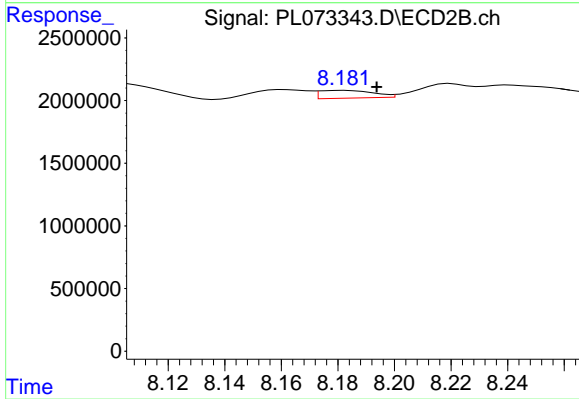
#9 Endosulfan I

R.T.: 8.301 min
 Delta R.T.: -0.025 min
 Response: 1436263
 Conc: 0.79 ng/ml



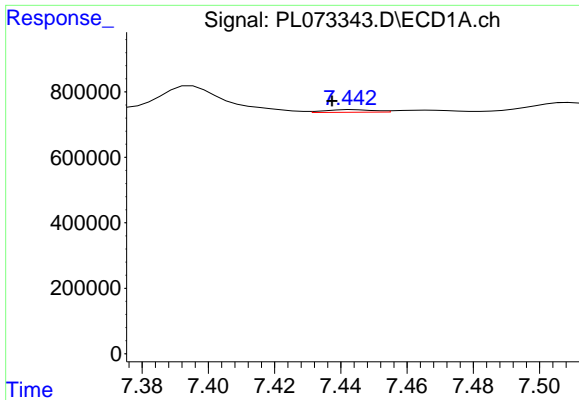
#10 gamma-Chlordane

R.T.: 7.395 min
 Delta R.T.: 0.027 min
 Response: 1585717
 Conc: 3.63 ng/ml



#10 gamma-Chlordane

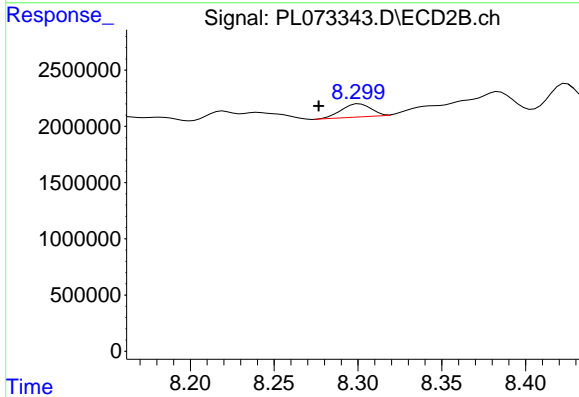
R.T.: 8.182 min
 Delta R.T.: -0.011 min
 Response: 822833
 Conc: 0.40 ng/ml



#11 alpha-Chlordane

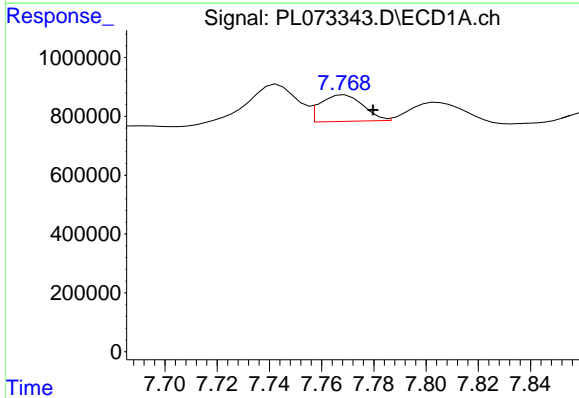
R.T.: 7.444 min
 Delta R.T.: 0.007 min
 Response: 83783
 Conc: 0.19 ng/ml

Instrument :
 ECD_L
 ClientSampleId :
 PT-TXP-WPDL



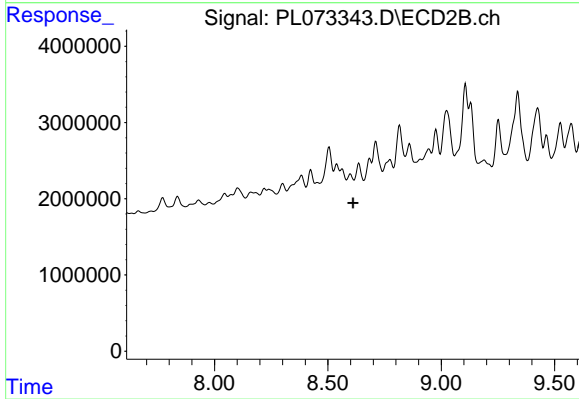
#11 alpha-Chlordane

R.T.: 8.301 min
 Delta R.T.: 0.024 min
 Response: 1436263
 Conc: 0.72 ng/ml



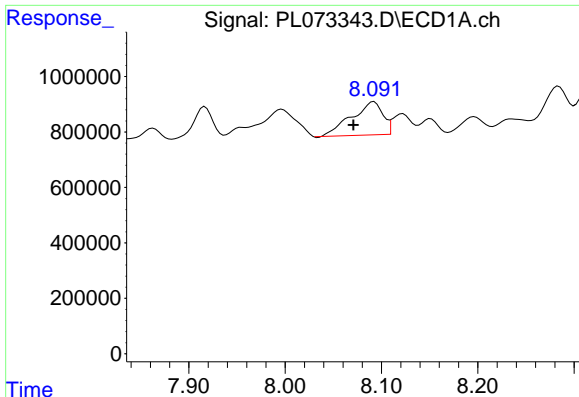
#13 Dieldrin

R.T.: 7.769 min
 Delta R.T.: -0.011 min
 Response: 1031002
 Conc: 2.47 ng/ml



#13 Dieldrin

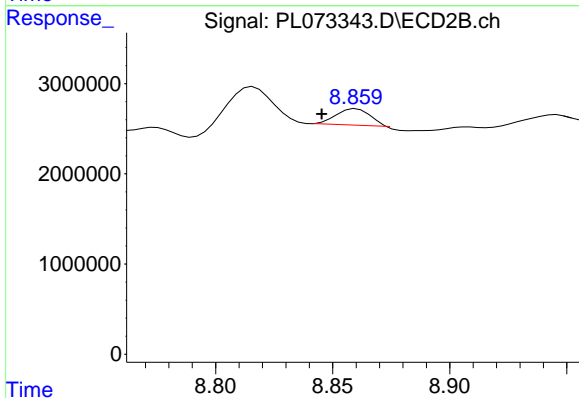
R.T.: 8.599 min
 Delta R.T.: -0.012 min
 Response: -222807
 Conc: N.D.



#14 Endrin

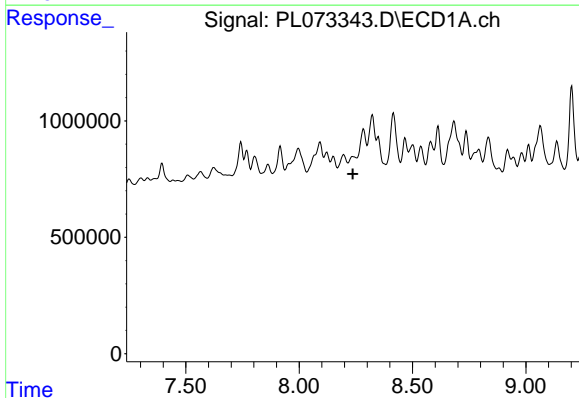
R.T.: 8.092 min
 Delta R.T.: 0.021 min
 Response: 2703992
 Conc: 6.97 ng/ml

Instrument :
 ECD_L
 ClientSampleId :
 PT-TXP-WPDL



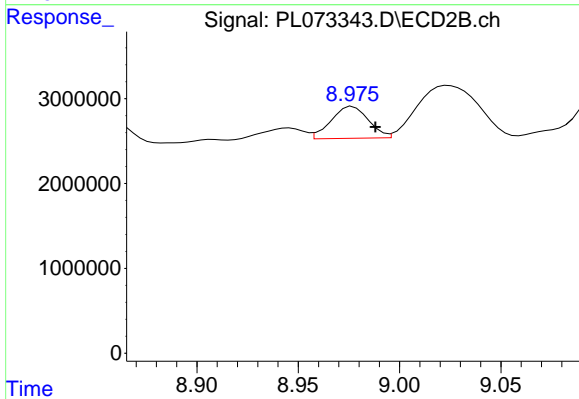
#14 Endrin

R.T.: 8.860 min
 Delta R.T.: 0.015 min
 Response: 1677516
 Conc: 1.09 ng/ml



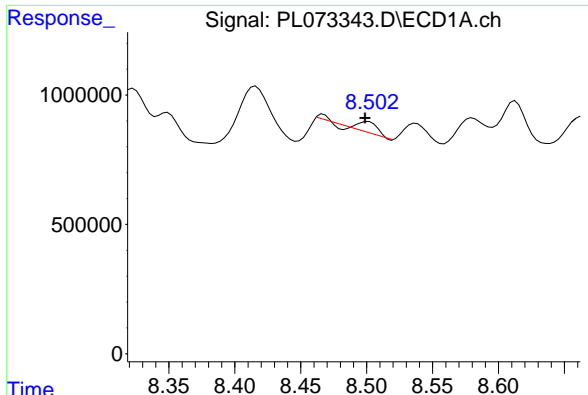
#16 4,4'-DDD

R.T.: 8.236 min
 Delta R.T.: -0.002 min
 Response: -254330
 Conc: N.D.



#16 4,4'-DDD

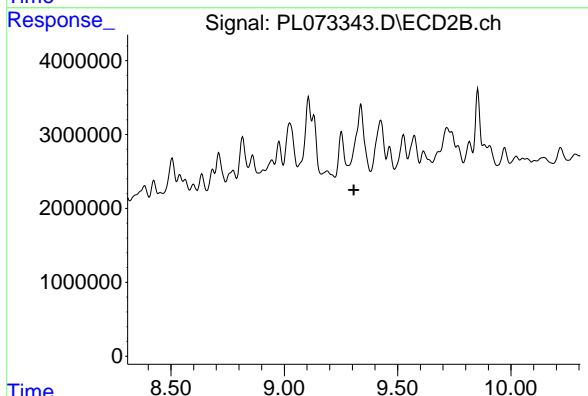
R.T.: 8.977 min
 Delta R.T.: -0.011 min
 Response: 4808921
 Conc: 3.29 ng/ml



#17 4,4'-DDT

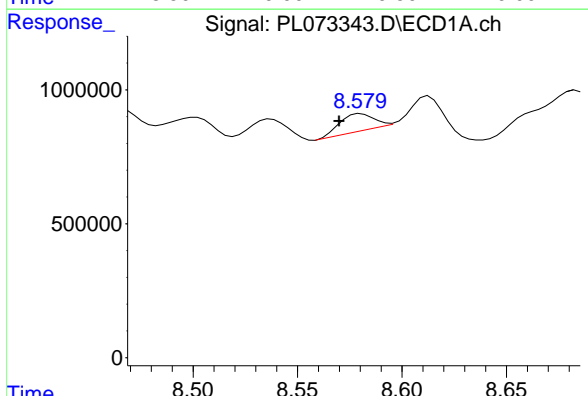
R.T.: 8.501 min
 Delta R.T.: 0.003 min
 Response: 402696
 Conc: 1.06 ng/ml

Instrument :
 ECD_L
 ClientSampleId :
 PT-TXP-WPDL



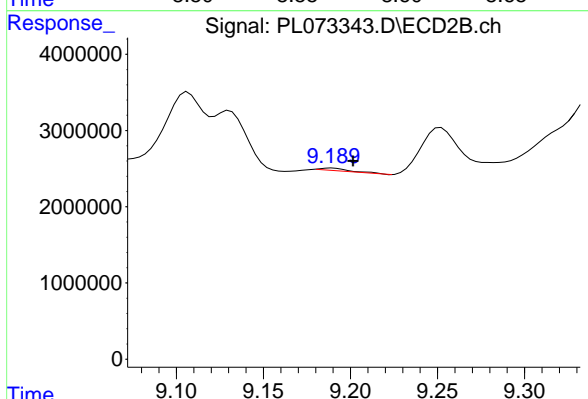
#17 4,4'-DDT

R.T.: 0.000 min
 Exp R.T. : 9.307 min
 Response: 0
 Conc: N.D.



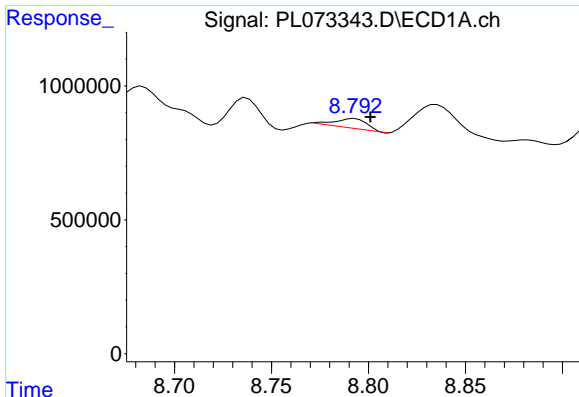
#18 Endrin aldehyde

R.T.: 8.580 min
 Delta R.T.: 0.010 min
 Response: 722411
 Conc: 2.28 ng/ml



#18 Endrin aldehyde

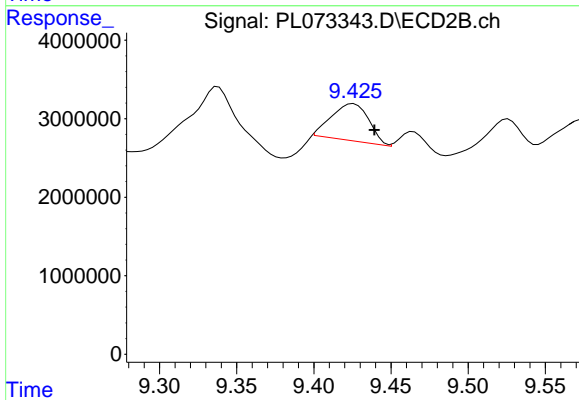
R.T.: 9.190 min
 Delta R.T.: -0.012 min
 Response: 368222
 Conc: 0.30 ng/ml



#19 Endosulfan Sulfate

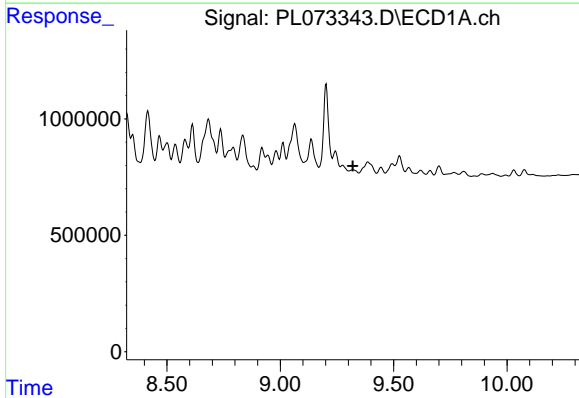
R.T.: 8.793 min
 Delta R.T.: -0.008 min
 Response: 415981
 Conc: 0.98 ng/ml

Instrument :
 ECD_L
 ClientSampleId :
 PT-TXP-WPDL



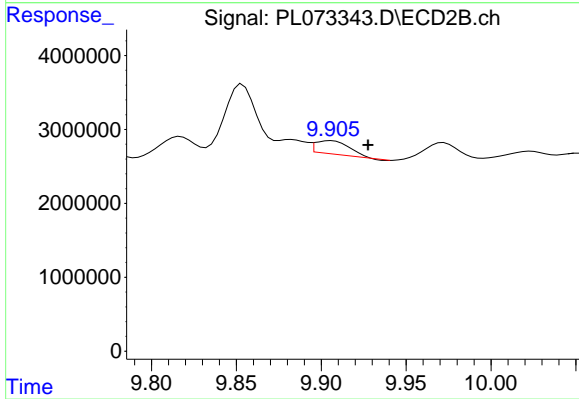
#19 Endosulfan Sulfate

R.T.: 9.426 min
 Delta R.T.: -0.014 min
 Response: 7933004
 Conc: 5.03 ng/ml



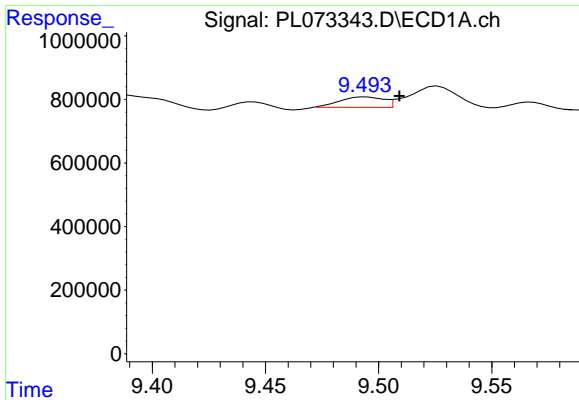
#21 Endrin ketone

R.T.: 9.320 min
 Delta R.T.: 0.000 min
 Response: -47614
 Conc: N.D.



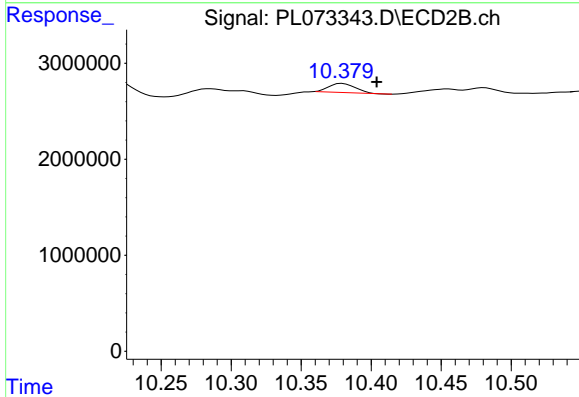
#21 Endrin ketone

R.T.: 9.906 min
 Delta R.T.: -0.021 min
 Response: 2510591
 Conc: 1.52 ng/ml

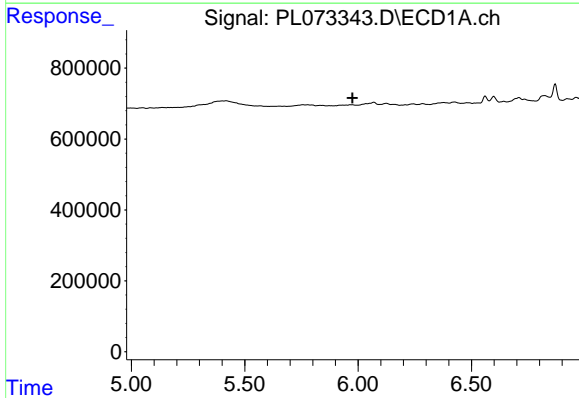


#22 Mirex
 R.T.: 9.494 min
 Delta R.T.: -0.015 min
 Response: 440820
 Conc: 0.93 ng/ml

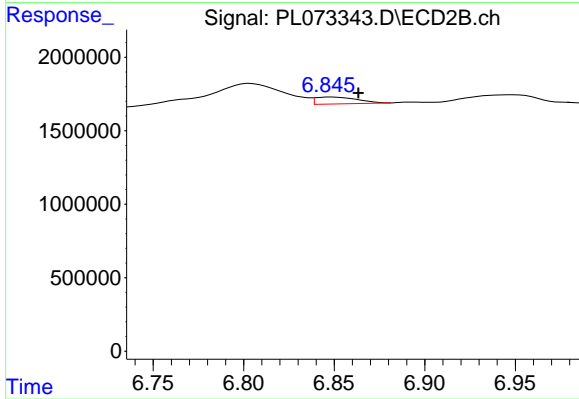
Instrument :
 ECD_L
 ClientSampleId :
 PT-TXP-WPDL



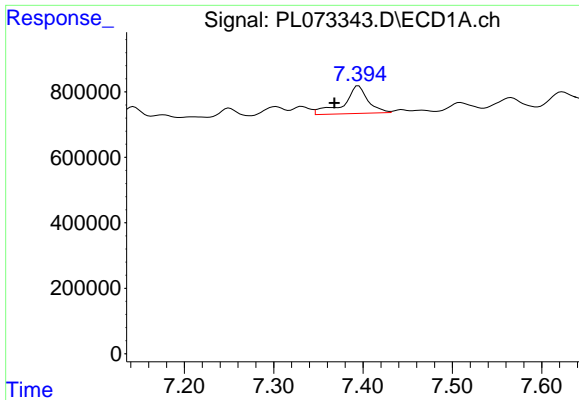
#22 Mirex
 R.T.: 10.380 min
 Delta R.T.: -0.025 min
 Response: 1246245
 Conc: 0.92 ng/ml



#23 Chlordane-1
 R.T.: 0.000 min
 Exp R.T. : 5.976 min
 Response: 0
 Conc: N.D.



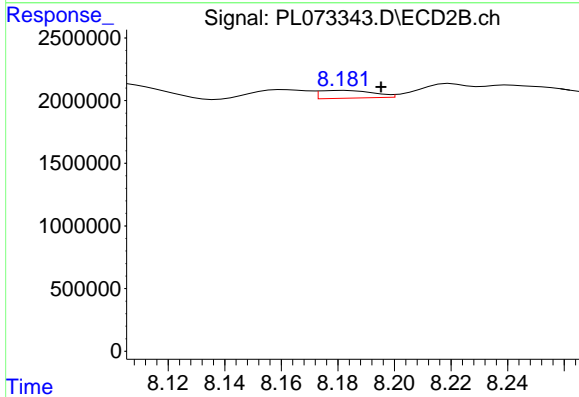
#23 Chlordane-1
 R.T.: 6.849 min
 Delta R.T.: -0.015 min
 Response: 750548
 Conc: 10.99 ng/ml



#25 Chlordane-3

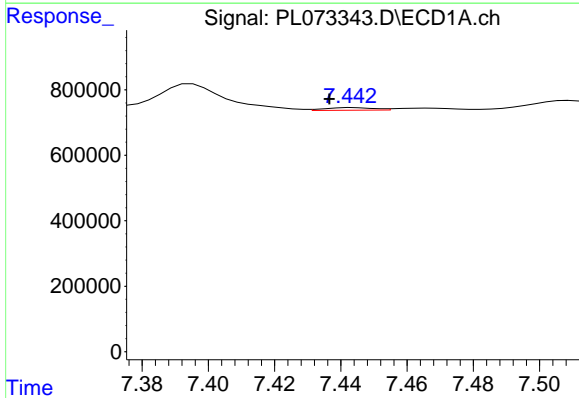
R.T.: 7.395 min
 Delta R.T.: 0.027 min
 Response: 1585717
 Conc: 38.83 ng/ml

Instrument :
 ECD_L
 ClientSampleId :
 PT-TXP-WPDL



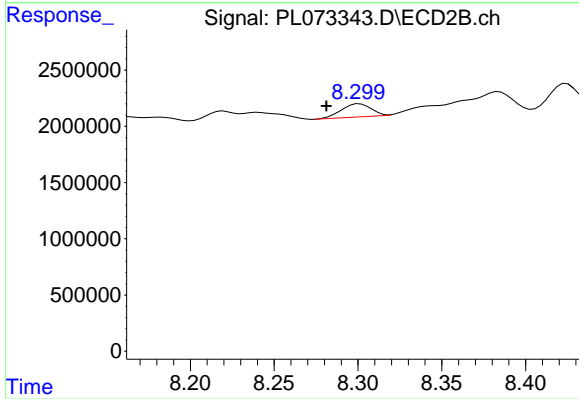
#25 Chlordane-3

R.T.: 8.182 min
 Delta R.T.: -0.013 min
 Response: 822833
 Conc: 3.03 ng/ml



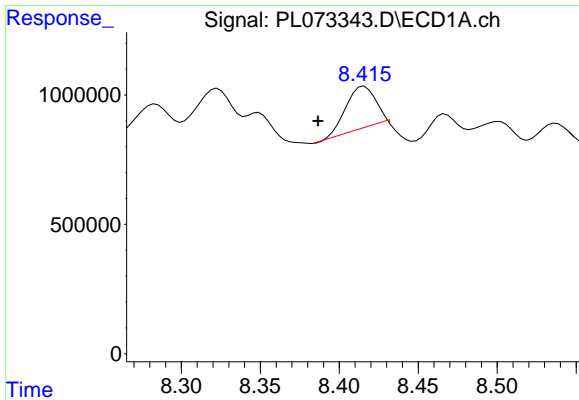
#26 Chlordane-4

R.T.: 7.444 min
 Delta R.T.: 0.007 min
 Response: 83783
 Conc: 1.89 ng/ml



#26 Chlordane-4

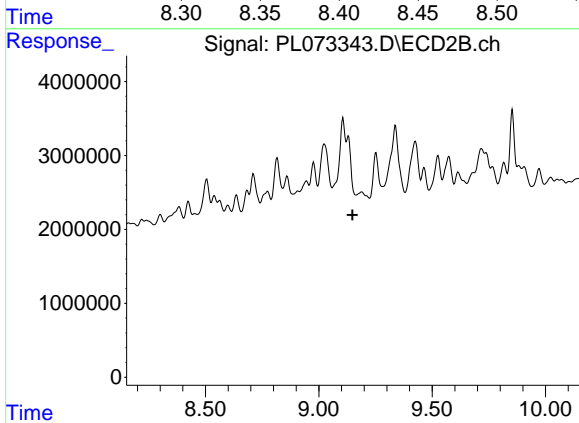
R.T.: 8.301 min
 Delta R.T.: 0.020 min
 Response: 1436263
 Conc: 4.34 ng/ml



#27 Chlordane-5

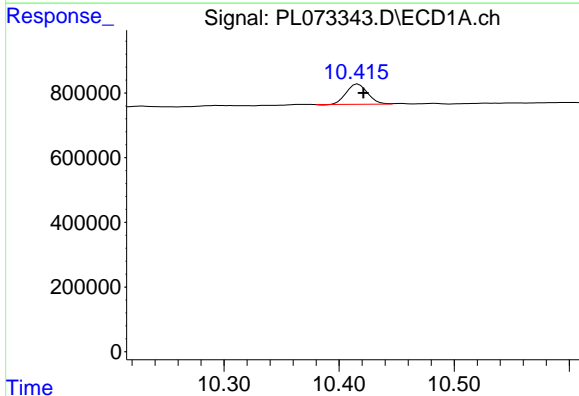
R.T.: 8.416 min
 Delta R.T.: 0.029 min
 Response: 2067589
 Conc: 126.26 ng/ml

Instrument :
 ECD_L
 ClientSampleId :
 PT-TXP-WPDL



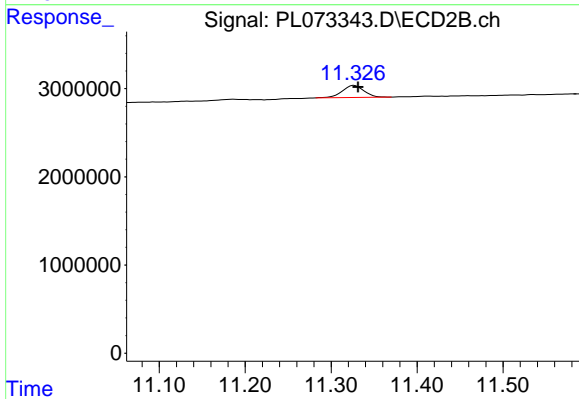
#27 Chlordane-5

R.T.: 9.130 min
 Delta R.T.: -0.019 min
 Response: -150264
 Conc: N.D.



#28 Decachlorobiphenyl

R.T.: 10.416 min
 Delta R.T.: -0.005 min
 Response: 815516
 Conc: 1.60 ng/ml



#28 Decachlorobiphenyl

R.T.: 11.327 min
 Delta R.T.: -0.004 min
 Response: 2409061
 Conc: 1.35 ng/ml