

Data Path : Z:\pestpcbsrv\HPCHEM1\ECD_L\Data\PL031422\
 Data File : PL073370.D
 Signal(s) : Signal #1: ECD1A.ch Signal #2: ECD2B.ch
 Acq On : 15 Mar 2022 02:10
 Operator : AR\AJ
 Sample : N1905-19
 Misc :
 ALS Vial : 39 Sample Multiplier: 1

Instrument :
 ECD_L
 ClientSampleId :
 WC-14A-1A-2

Integration File signal 1: autoint1.e
 Integration File signal 2: autoint2.e
 Quant Time: Mar 15 05:21:26 2022
 Quant Method : Z:\pestpcbsrv\HPCHEM1\ECD_L\methods\PL031122.M
 Quant Title : GC Extractables
 QLast Update : Mon Mar 14 04:12:46 2022
 Response via : Initial Calibration
 Integrator: ChemStation

Volume Inj. : 1 µl
 Signal #1 Phase : ZB-MR2 Signal #2 Phase: ZB-MR1
 Signal #1 Info : 30M x 0.32mm x0.2 Signal #2 Info : 30M x 0.32mm x0.5µm

| Compound | RT#1 | RT#2 | Resp#1 | Resp#2 | ng/ml | ng/ml |
|-----------------------------|--------|--------|---------|----------|--------|----------|
| ----- | | | | | | |
| System Monitoring Compounds | | | | | | |
| 1) SA Tetrachlo... | 4.644 | 5.492 | 3640530 | 14008513 | 11.366 | 8.535 |
| 2) SA Decachlor... | 10.418 | 11.331 | 5058292 | 16047275 | 9.948 | 8.974 |
| Target Compounds | | | | | | |
| 3) MA gamma-BHC... | 5.768 | 0.000 | 1217543 | 0 | 2.919 | N.D. # |
| 4) MA Heptachlor | 6.162f | 0.000 | 340206 | 0 | 0.754 | N.D. # |
| 5) MB Aldrin | 0.000 | 7.464 | 0 | 742088 | N.D. | 0.354 # |
| 6) B beta-BHC | 6.162 | 6.707f | 340206 | 181228 | 1.652 | 0.174 # |
| 7) B delta-BHC | 6.396f | 6.960 | 303984 | 1280557 | 0.757 | 0.595 |
| 9) A Endosulfan I | 7.513f | 0.000 | 541017 | 0 | 1.319 | N.D. # |
| 10) B gamma-Chl... | 7.343f | 8.181 | 231765 | 1489057 | 0.530 | 0.729 # |
| 11) B alpha-Chl... | 7.439 | 8.291 | 312988 | 804652 | 0.708 | 0.402 # |
| 12) B 4,4'-DDE | 7.649 | 8.458 | 75607 | 467771 | 0.211 | 0.261 |
| 13) MA Dieldrin | 7.789 | 8.633f | 118806 | 310690 | 0.285 | 0.168 # |
| 14) MA Endrin | 8.062 | 8.828f | 97531 | 36393 | 0.251 | 0.024 # |
| 15) B Endosulfa... | 8.382 | 0.000 | 46532 | 0 | 0.119 | N.D. # |
| 16) A 4,4'-DDD | 8.224 | 8.995 | 114492 | 1028941 | 0.353 | 0.705 # |
| 17) MA 4,4'-DDT | 8.492 | 0.000 | 234831 | 0 | 0.621 | N.D. # |
| 19) B Endosulfa... | 0.000 | 9.410f | 0 | 110094 | N.D. | 0.070 # |
| 20) A Methoxychlor | 9.114f | 0.000 | 1179910 | 0 | 4.599 | N.D. # |
| 22) Mirex | 9.503 | 10.409 | -108192 | 1041510 | N.D. | 0.767 |
| 23) Chlordane-1 | 5.990 | 6.850 | 153412 | 2090574 | 12.941 | 30.603 # |
| 24) Chlordane-2 | 6.687f | 7.464f | 109583 | 742088 | 6.718 | 10.325 # |
| 25) Chlordane-3 | 7.343f | 8.181 | 231765 | 1489057 | 5.676 | 5.492 |
| 26) Chlordane-4 | 7.439 | 8.291 | 312988 | 804652 | 7.062 | 2.429 # |
| 27) Chlordane-5 | 8.382 | 9.157 | 46532 | 72676 | 2.842 | 1.339 # |

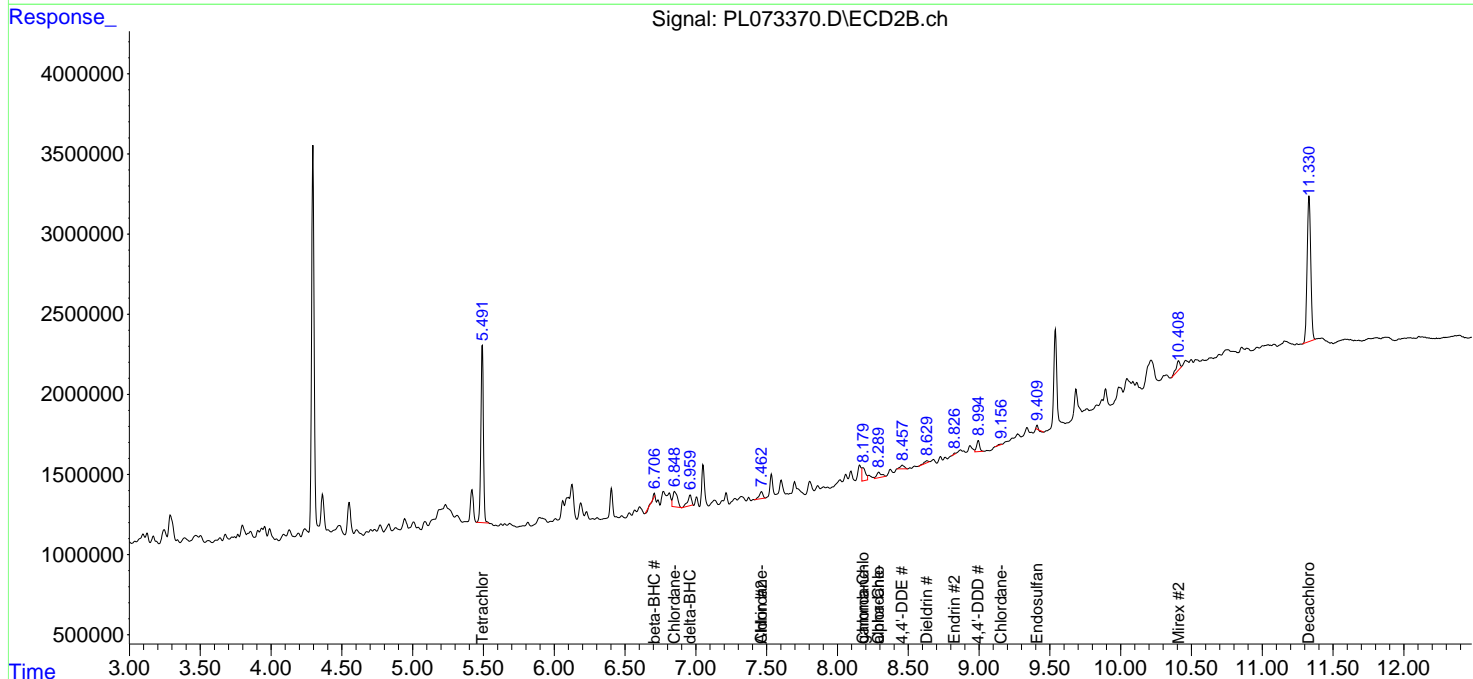
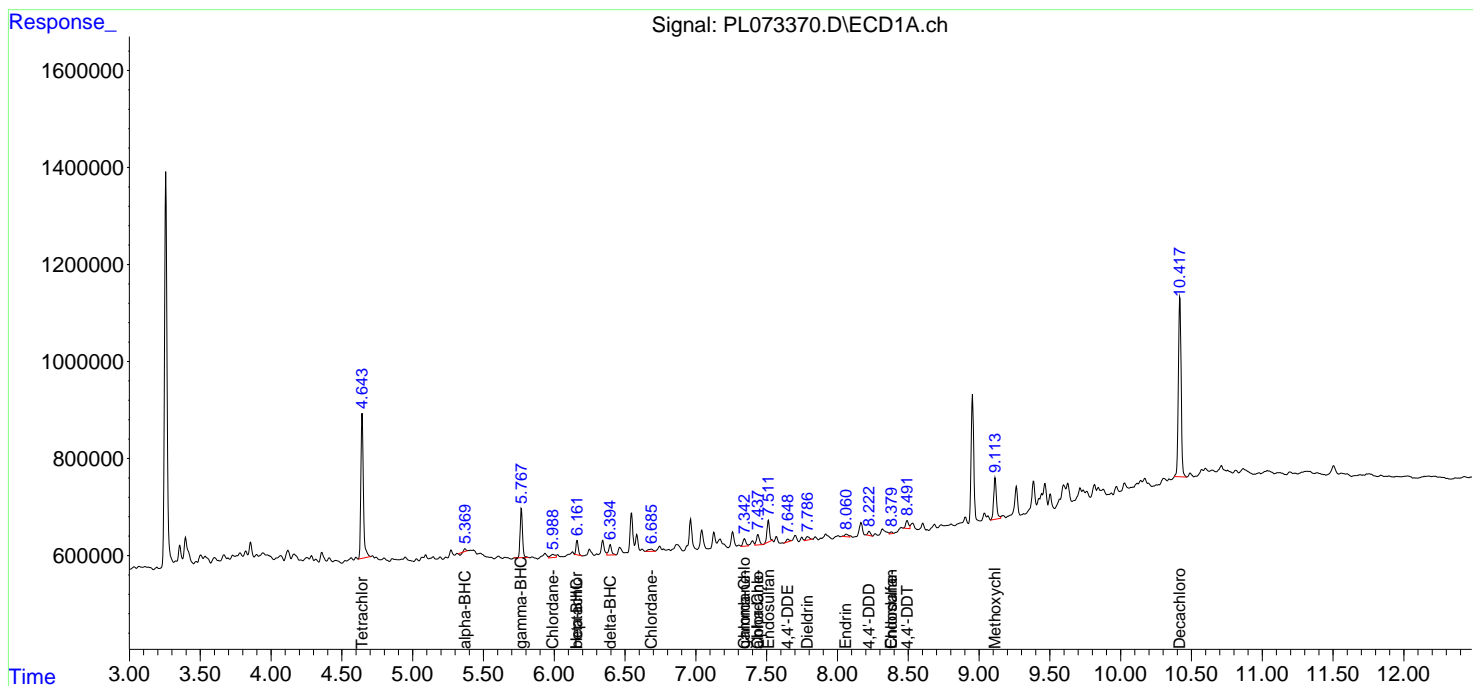
(f)=RT Delta > 1/2 Window (#)=Amounts differ by > 25% (m)=manual int.

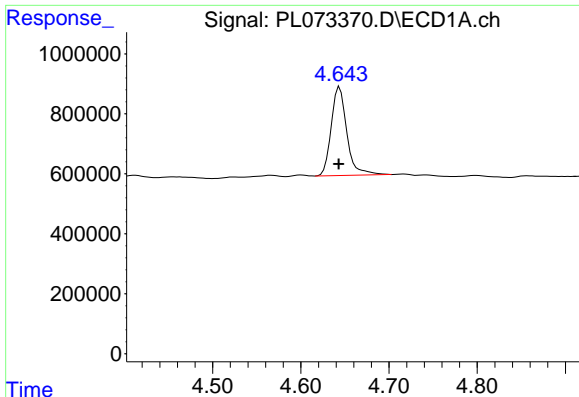
Data Path : Z:\pestpcbsrv\HPCHEM1\ECD_L\Data\PL031422\
 Data File : PL073370.D
 Signal(s) : Signal #1: ECD1A.ch Signal #2: ECD2B.ch
 Acq On : 15 Mar 2022 02:10
 Operator : AR\AJ
 Sample : N1905-19
 Misc :
 ALS Vial : 39 Sample Multiplier: 1

Instrument :
 ECD_L
 ClientSampleId :
 WC-14A-1A-2

Integration File signal 1: autoint1.e
 Integration File signal 2: autoint2.e
 Quant Time: Mar 15 05:21:26 2022
 Quant Method : Z:\pestpcbsrv\HPCHEM1\ECD_L\methods\PL031122.M
 Quant Title : GC Extractables
 QLast Update : Mon Mar 14 04:12:46 2022
 Response via : Initial Calibration
 Integrator: ChemStation

Volume Inj. : 1 µl
 Signal #1 Phase : ZB-MR2 Signal #2 Phase: ZB-MR1
 Signal #1 Info : 30M x 0.32mm x0.2 Signal #2 Info : 30M x 0.32mm x0.5µm

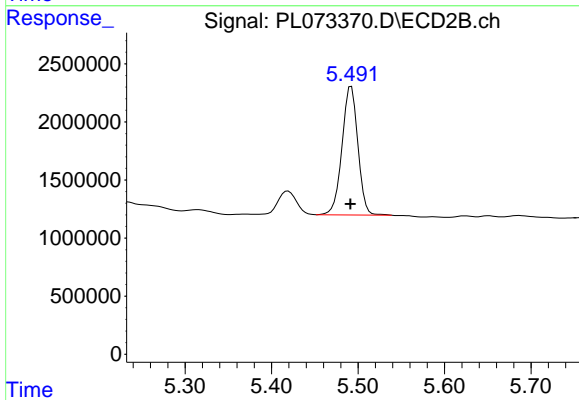




#1 Tetrachloro-m-xylene

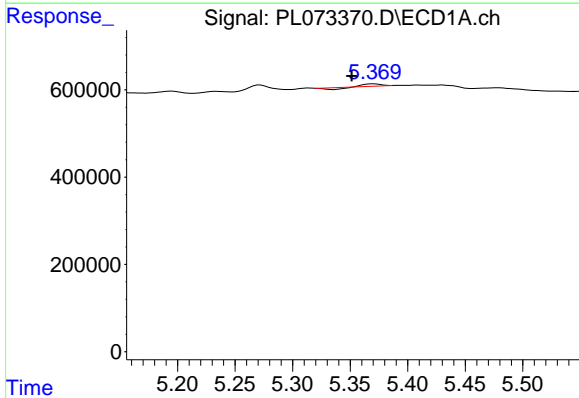
R.T.: 4.644 min
 Delta R.T.: 0.001 min
 Response: 3640530
 Conc: 11.37 ng/ml

Instrument :
 ECD_L
 ClientSampleId :
 WC-14A-1A-2



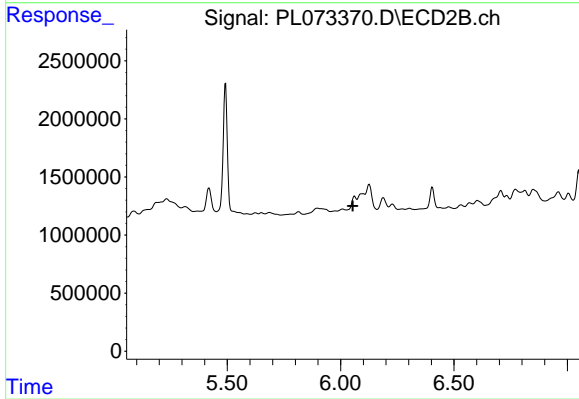
#1 Tetrachloro-m-xylene

R.T.: 5.492 min
 Delta R.T.: 0.001 min
 Response: 14008513
 Conc: 8.54 ng/ml



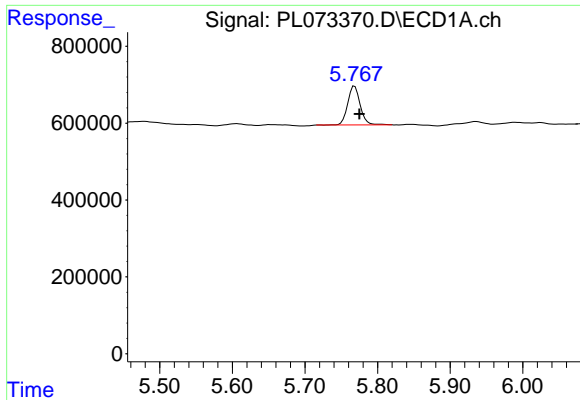
#2 alpha-BHC

R.T.: 5.371 min
 Delta R.T.: 0.019 min
 Response: 8316
 Conc: 0.02 ng/ml



#2 alpha-BHC

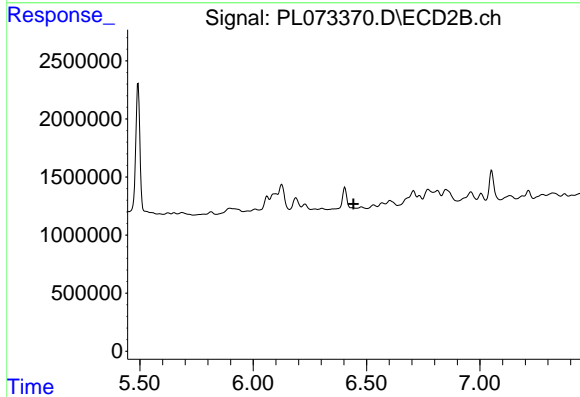
R.T.: 6.061 min
 Delta R.T.: 0.007 min
 Response: -246596
 Conc: N.D.



#3 gamma-BHC (Lindane)

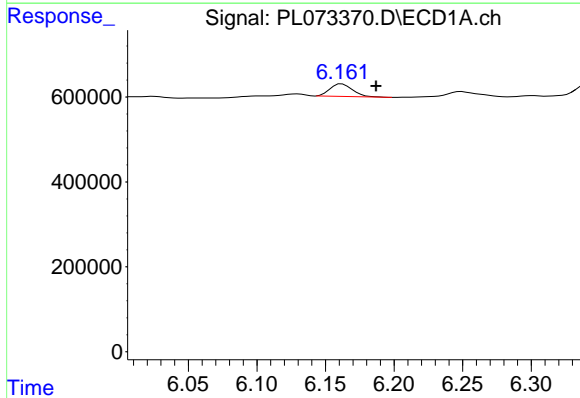
R.T.: 5.768 min
 Delta R.T.: -0.006 min
 Response: 1217543
 Conc: 2.92 ng/ml

Instrument :
 ECD_L
 ClientSampleId :
 WC-14A-1A-2



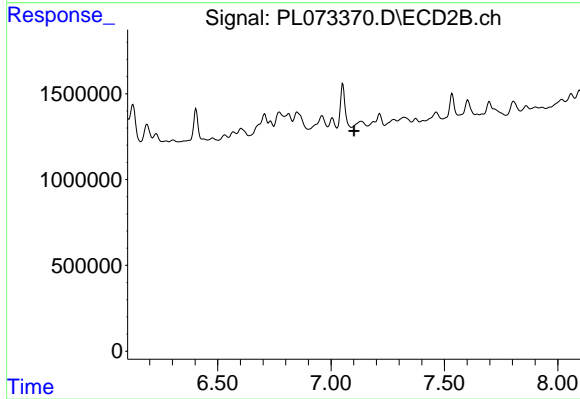
#3 gamma-BHC (Lindane)

R.T.: 0.000 min
 Exp R.T. : 6.443 min
 Response: 0
 Conc: N.D.



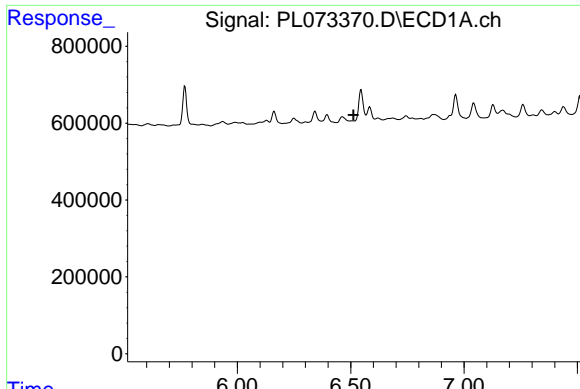
#4 Heptachlor

R.T.: 6.162 min
 Delta R.T.: -0.025 min
 Response: 340206
 Conc: 0.75 ng/ml



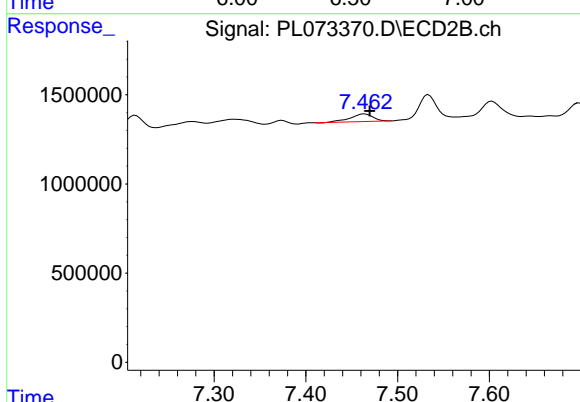
#4 Heptachlor

R.T.: 0.000 min
 Exp R.T. : 7.102 min
 Response: 0
 Conc: N.D.

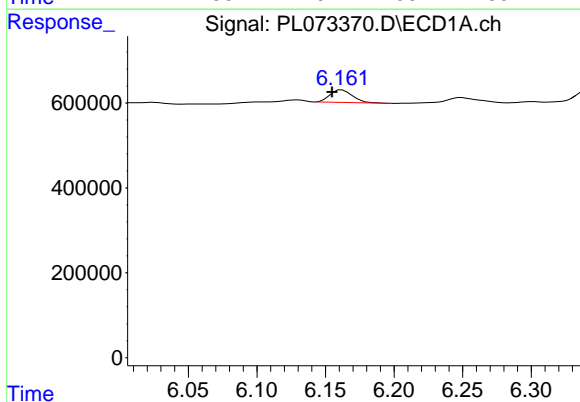


#5 Aldrin
 R.T.: 0.000 min
 Exp R.T.: 6.513 min
 Response: 0
 Conc: N.D.

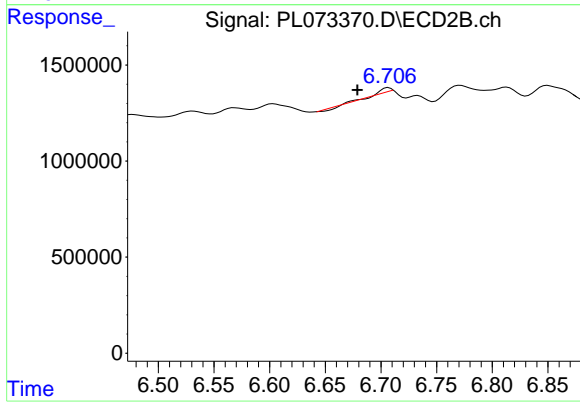
Instrument : ECD_L
 ClientSampleId : WC-14A-1A-2



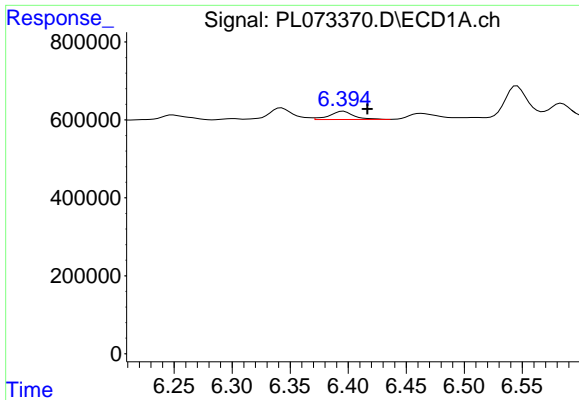
#5 Aldrin
 R.T.: 7.464 min
 Delta R.T.: -0.006 min
 Response: 742088
 Conc: 0.35 ng/ml



#6 beta-BHC
 R.T.: 6.162 min
 Delta R.T.: 0.007 min
 Response: 340206
 Conc: 1.65 ng/ml



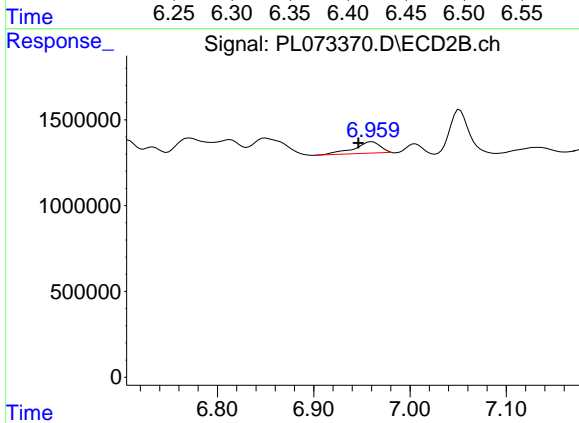
#6 beta-BHC
 R.T.: 6.707 min
 Delta R.T.: 0.028 min
 Response: 181228
 Conc: 0.17 ng/ml



#7 delta-BHC

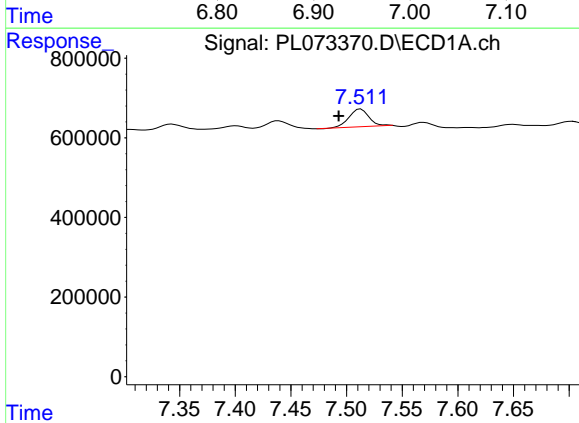
R.T.: 6.396 min
 Delta R.T.: -0.021 min
 Response: 303984
 Conc: 0.76 ng/ml

Instrument :
 ECD_L
 ClientSampleId :
 WC-14A-1A-2



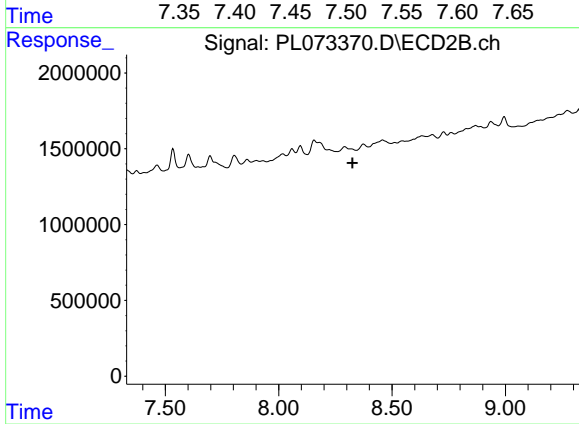
#7 delta-BHC

R.T.: 6.960 min
 Delta R.T.: 0.014 min
 Response: 1280557
 Conc: 0.59 ng/ml



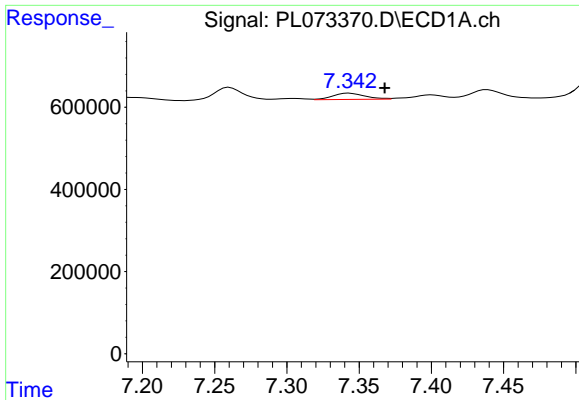
#9 Endosulfan I

R.T.: 7.513 min
 Delta R.T.: 0.020 min
 Response: 541017
 Conc: 1.32 ng/ml



#9 Endosulfan I

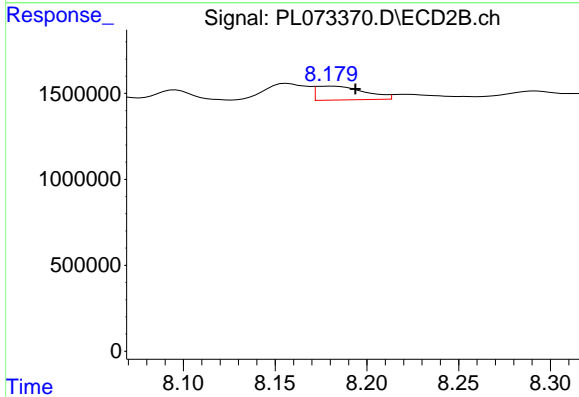
R.T.: 0.000 min
 Exp R.T.: 8.326 min
 Response: 0
 Conc: N.D.



#10 gamma-Chlordane

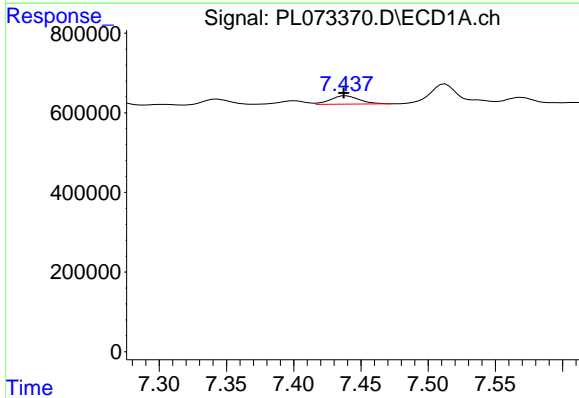
R.T.: 7.343 min
 Delta R.T.: -0.024 min
 Response: 231765
 Conc: 0.53 ng/ml

Instrument :
 ECD_L
 ClientSampleId :
 WC-14A-1A-2



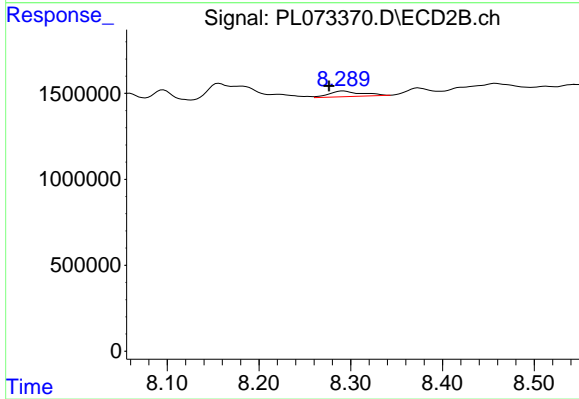
#10 gamma-Chlordane

R.T.: 8.181 min
 Delta R.T.: -0.013 min
 Response: 1489057
 Conc: 0.73 ng/ml



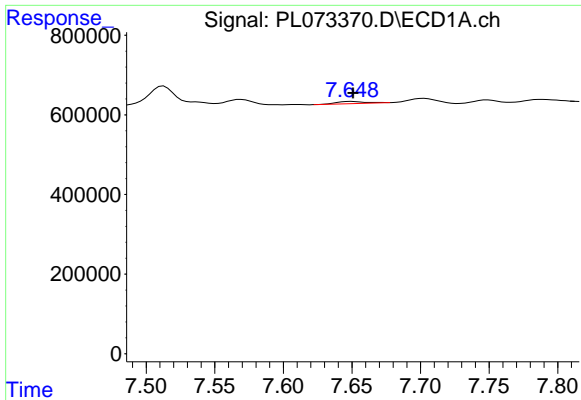
#11 alpha-Chlordane

R.T.: 7.439 min
 Delta R.T.: 0.002 min
 Response: 312988
 Conc: 0.71 ng/ml



#11 alpha-Chlordane

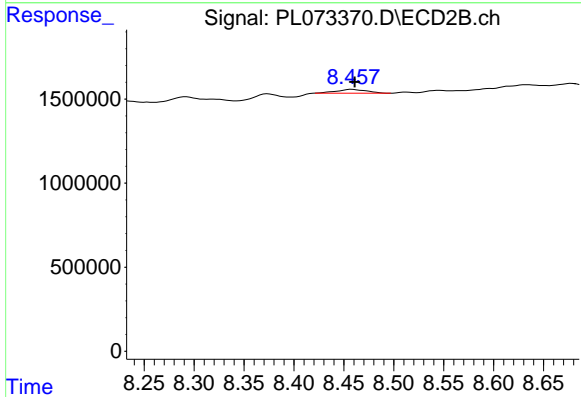
R.T.: 8.291 min
 Delta R.T.: 0.015 min
 Response: 804652
 Conc: 0.40 ng/ml



#12 4,4'-DDE

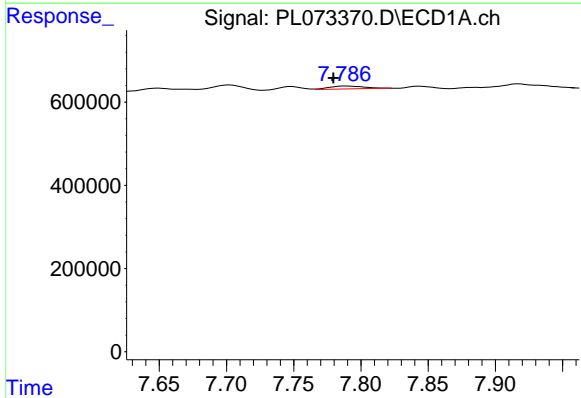
R.T.: 7.649 min
 Delta R.T.: -0.002 min
 Response: 75607
 Conc: 0.21 ng/ml

Instrument :
 ECD_L
 ClientSampleId :
 WC-14A-1A-2



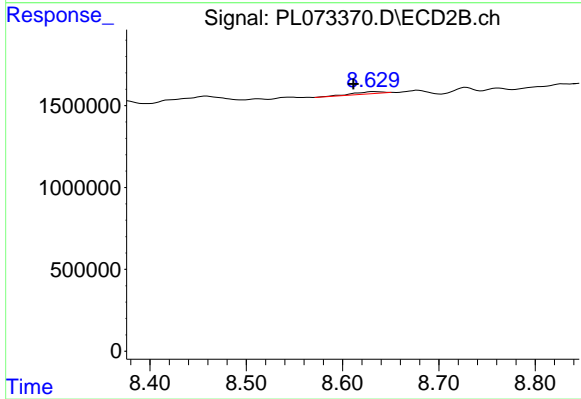
#12 4,4'-DDE

R.T.: 8.458 min
 Delta R.T.: -0.003 min
 Response: 467771
 Conc: 0.26 ng/ml



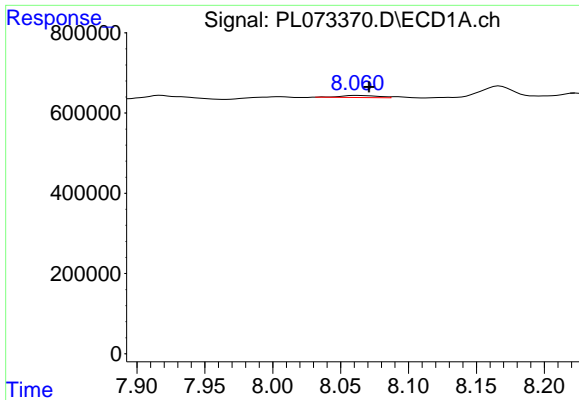
#13 Dieldrin

R.T.: 7.789 min
 Delta R.T.: 0.009 min
 Response: 118806
 Conc: 0.29 ng/ml



#13 Dieldrin

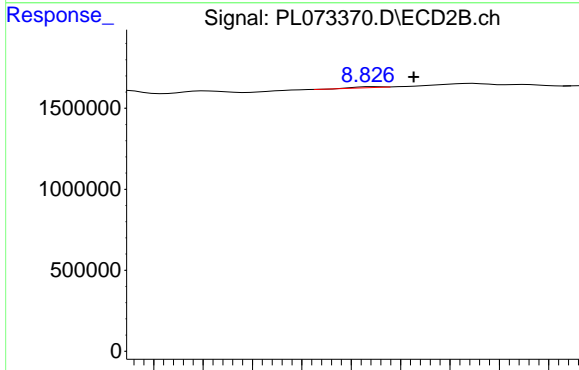
R.T.: 8.633 min
 Delta R.T.: 0.022 min
 Response: 310690
 Conc: 0.17 ng/ml



#14 Endrin

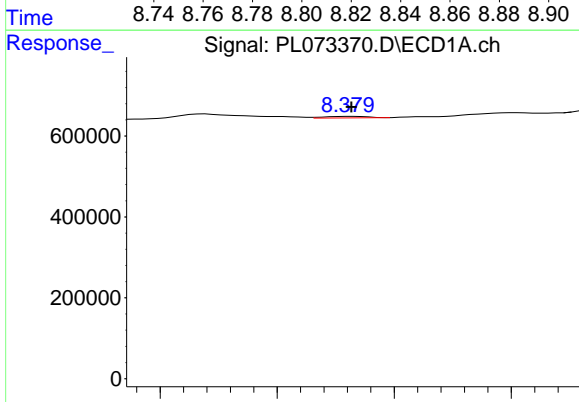
R.T.: 8.062 min
 Delta R.T.: -0.009 min
 Response: 97531
 Conc: 0.25 ng/ml

Instrument :
 ECD_L
 ClientSampleId :
 WC-14A-1A-2



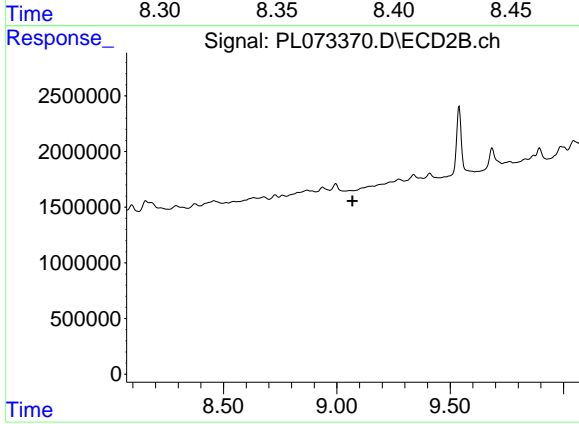
#14 Endrin

R.T.: 8.828 min
 Delta R.T.: -0.017 min
 Response: 36393
 Conc: 0.02 ng/ml



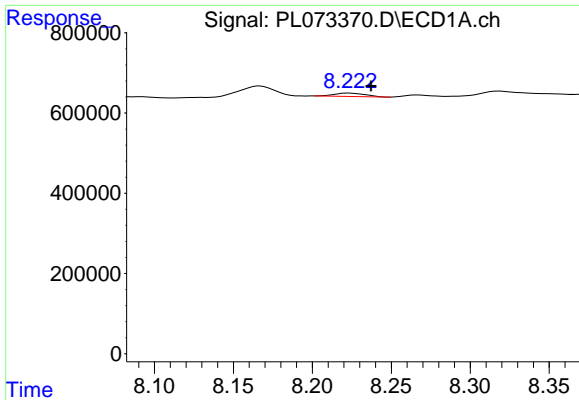
#15 Endosulfan II

R.T.: 8.382 min
 Delta R.T.: 0.000 min
 Response: 46532
 Conc: 0.12 ng/ml



#15 Endosulfan II

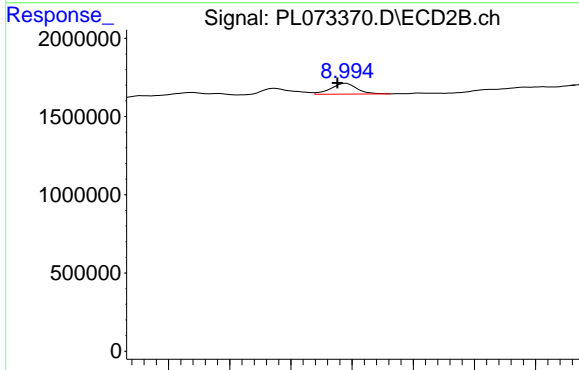
R.T.: 0.000 min
 Exp R.T. : 9.069 min
 Response: 0
 Conc: N.D.



#16 4,4'-DDD

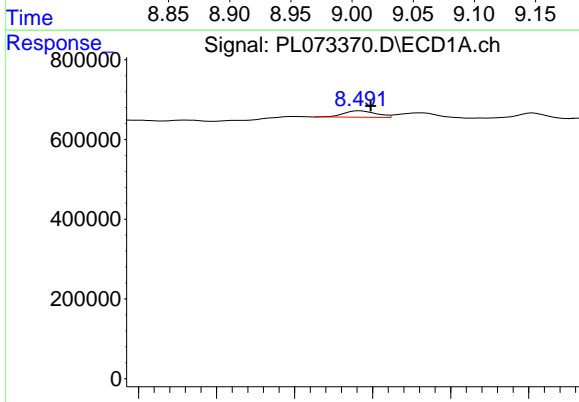
R.T.: 8.224 min
 Delta R.T.: -0.014 min
 Response: 114492
 Conc: 0.35 ng/ml

Instrument :
 ECD_L
 ClientSampleId :
 WC-14A-1A-2



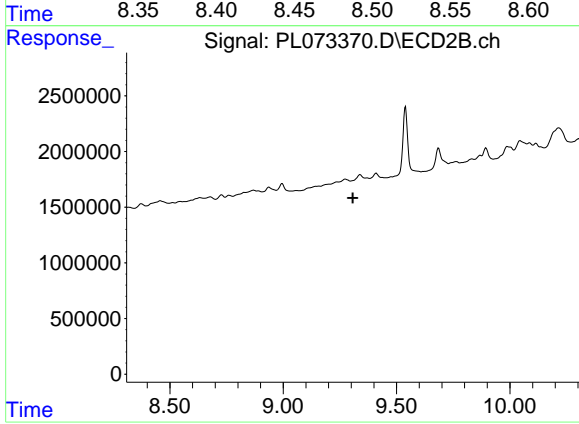
#16 4,4'-DDD

R.T.: 8.995 min
 Delta R.T.: 0.007 min
 Response: 1028941
 Conc: 0.70 ng/ml



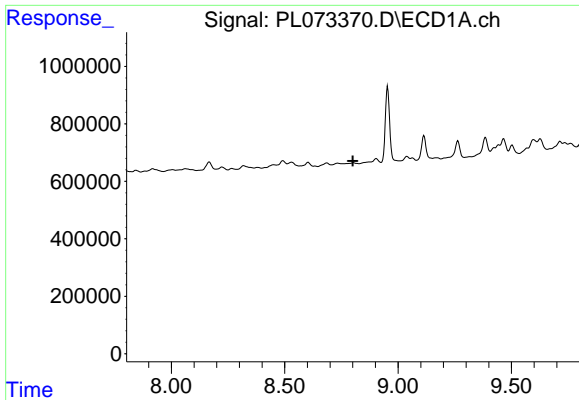
#17 4,4'-DDT

R.T.: 8.492 min
 Delta R.T.: -0.006 min
 Response: 234831
 Conc: 0.62 ng/ml



#17 4,4'-DDT

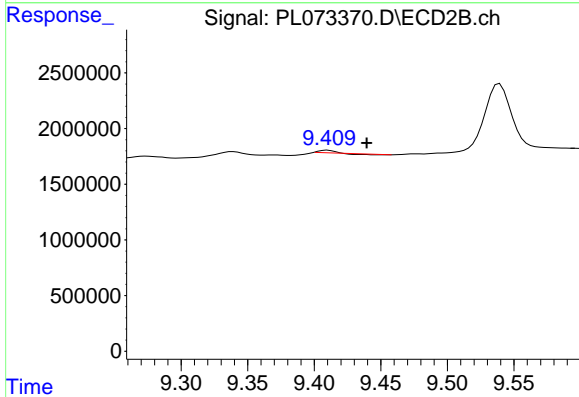
R.T.: 0.000 min
 Exp R.T. : 9.307 min
 Response: 0
 Conc: N.D.



#19 Endosulfan Sulfate

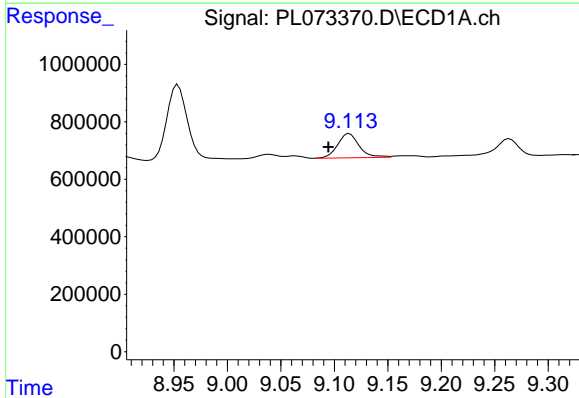
R.T.: 0.000 min
 Exp R.T.: 8.801 min
 Response: 0
 Conc: N.D.

Instrument :
 ECD_L
 ClientSampleId :
 WC-14A-1A-2



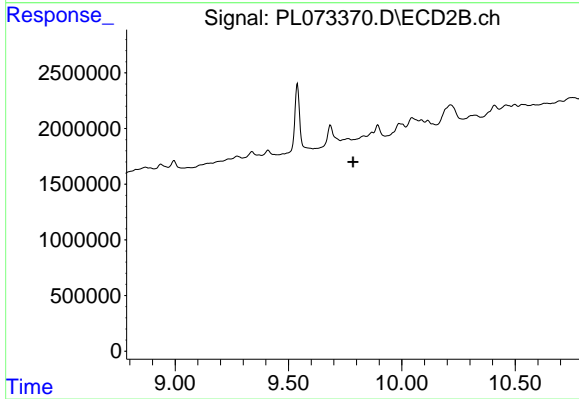
#19 Endosulfan Sulfate

R.T.: 9.410 min
 Delta R.T.: -0.029 min
 Response: 110094
 Conc: 0.07 ng/ml



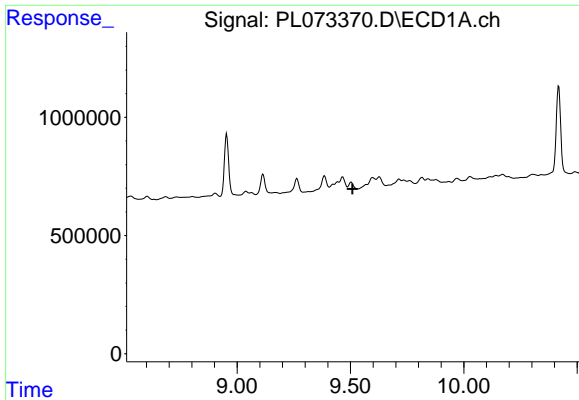
#20 Methoxychlor

R.T.: 9.114 min
 Delta R.T.: 0.020 min
 Response: 1179910
 Conc: 4.60 ng/ml



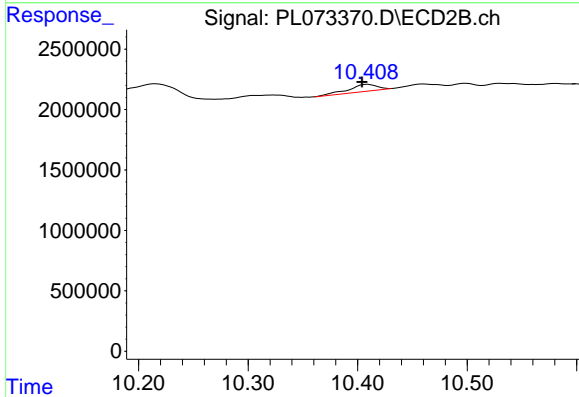
#20 Methoxychlor

R.T.: 0.000 min
 Exp R.T.: 9.786 min
 Response: 0
 Conc: N.D.

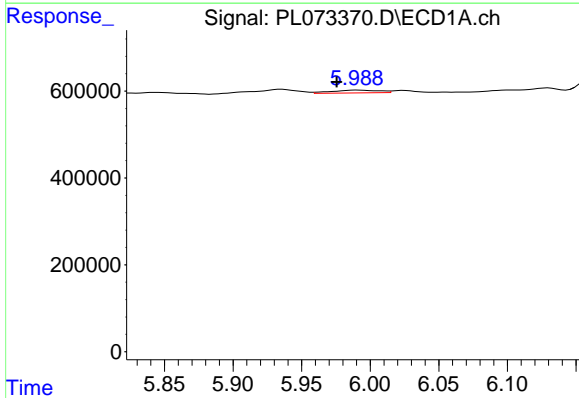


#22 Mirex
 R.T.: 9.503 min
 Delta R.T.: -0.006 min
 Response: -108192
 Conc: N.D.

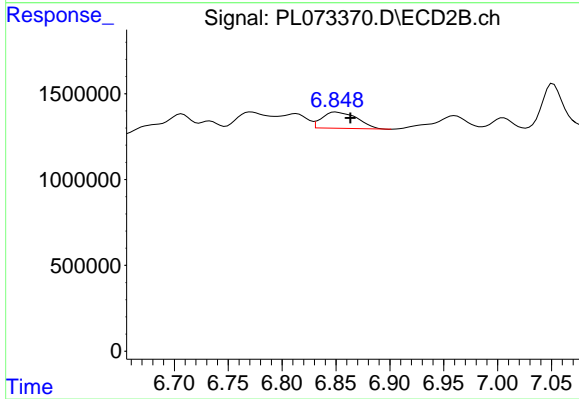
Instrument :
 ECD_L
 ClientSampleId :
 WC-14A-1A-2



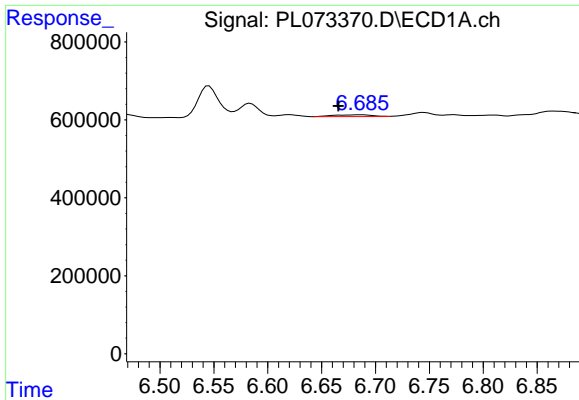
#22 Mirex
 R.T.: 10.409 min
 Delta R.T.: 0.005 min
 Response: 1041510
 Conc: 0.77 ng/ml



#23 Chlordane-1
 R.T.: 5.990 min
 Delta R.T.: 0.014 min
 Response: 153412
 Conc: 12.94 ng/ml



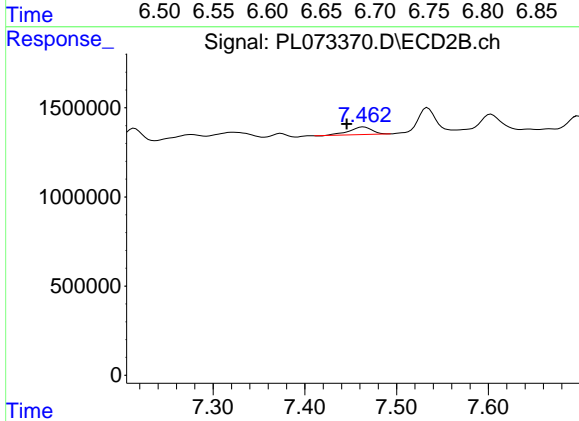
#23 Chlordane-1
 R.T.: 6.850 min
 Delta R.T.: -0.013 min
 Response: 2090574
 Conc: 30.60 ng/ml



#24 Chlordane-2

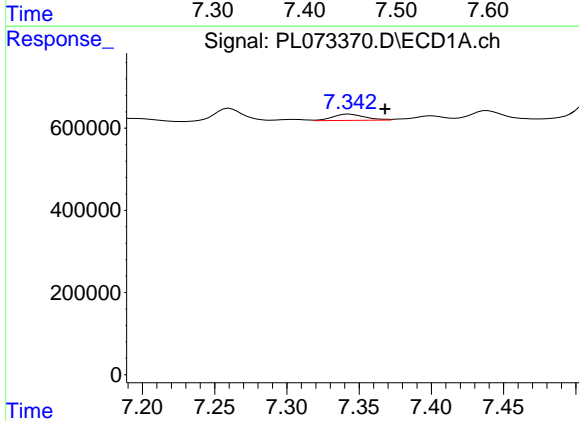
R.T.: 6.687 min
 Delta R.T.: 0.021 min
 Response: 109583
 Conc: 6.72 ng/ml

Instrument :
 ECD_L
 ClientSampleId :
 WC-14A-1A-2



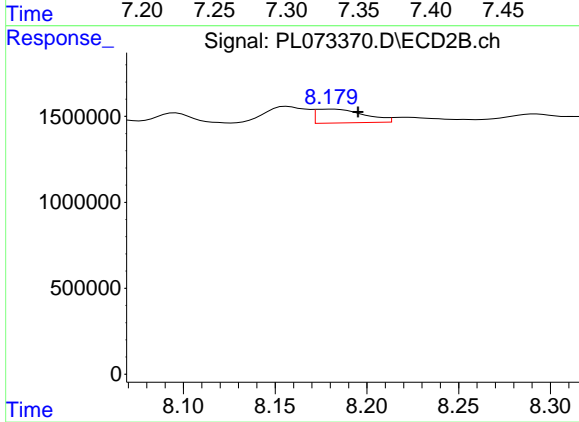
#24 Chlordane-2

R.T.: 7.464 min
 Delta R.T.: 0.018 min
 Response: 742088
 Conc: 10.32 ng/ml



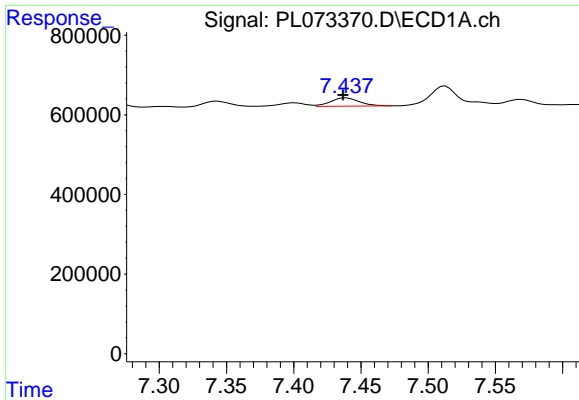
#25 Chlordane-3

R.T.: 7.343 min
 Delta R.T.: -0.025 min
 Response: 231765
 Conc: 5.68 ng/ml



#25 Chlordane-3

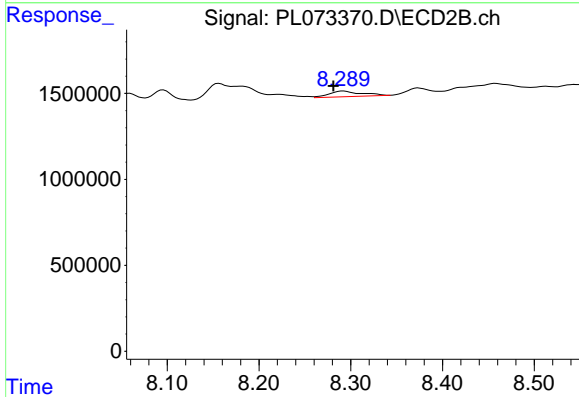
R.T.: 8.181 min
 Delta R.T.: -0.014 min
 Response: 1489057
 Conc: 5.49 ng/ml



#26 Chlordane-4

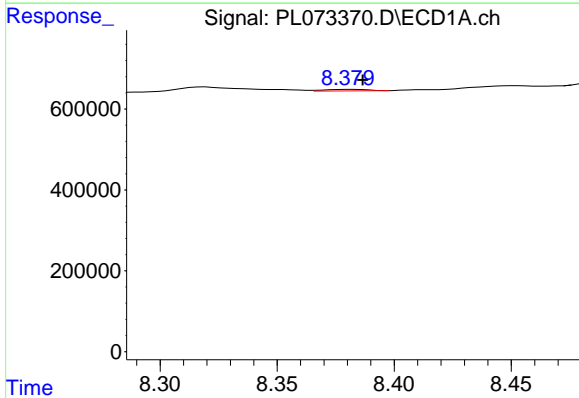
R.T.: 7.439 min
 Delta R.T.: 0.002 min
 Response: 312988
 Conc: 7.06 ng/ml

Instrument :
 ECD_L
 ClientSampleId :
 WC-14A-1A-2



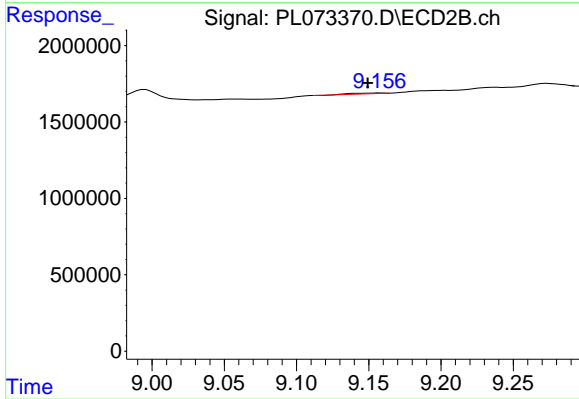
#26 Chlordane-4

R.T.: 8.291 min
 Delta R.T.: 0.010 min
 Response: 804652
 Conc: 2.43 ng/ml



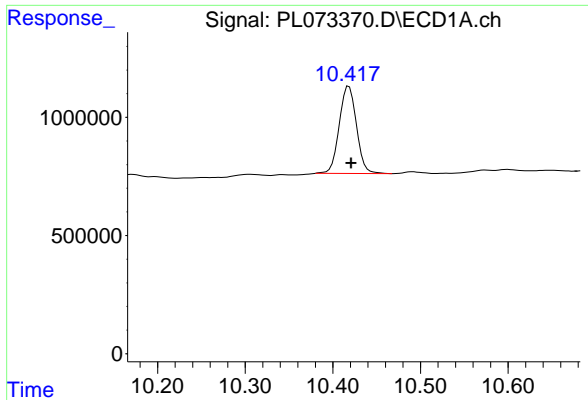
#27 Chlordane-5

R.T.: 8.382 min
 Delta R.T.: -0.005 min
 Response: 46532
 Conc: 2.84 ng/ml



#27 Chlordane-5

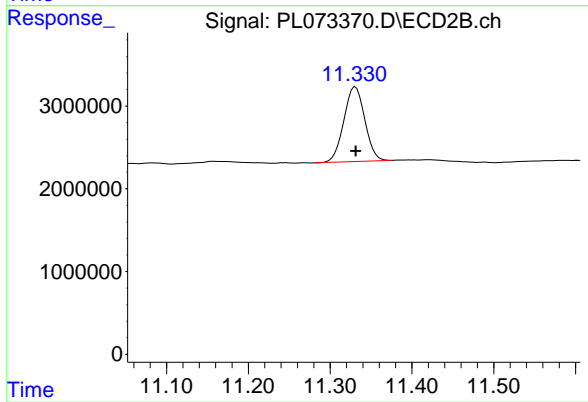
R.T.: 9.157 min
 Delta R.T.: 0.008 min
 Response: 72676
 Conc: 1.34 ng/ml



#28 Decachlorobiphenyl

R.T.: 10.418 min
Delta R.T.: -0.003 min
Response: 5058292
Conc: 9.95 ng/ml

Instrument :
ECD_L
ClientSampleId :
WC-14A-1A-2



#28 Decachlorobiphenyl

R.T.: 11.331 min
Delta R.T.: 0.000 min
Response: 16047275
Conc: 8.97 ng/ml