

Data Path : Z:\pestpcbsrv\HPCHEM1\ECD_L\Data\PL031422\
 Data File : PL073371.D
 Signal(s) : Signal #1: ECD1A.ch Signal #2: ECD2B.ch
 Acq On : 15 Mar 2022 02:27
 Operator : AR\AJ
 Sample : N1908-01
 Misc :
 ALS Vial : 40 Sample Multiplier: 1

Instrument :
 ECD_L
 ClientSampleId :

Integration File signal 1: autoint1.e
 Integration File signal 2: autoint2.e
 Quant Time: Mar 15 05:22:05 2022
 Quant Method : Z:\pestpcbsrv\HPCHEM1\ECD_L\methods\PL031122.M
 Quant Title : GC Extractables
 QLast Update : Mon Mar 14 04:12:46 2022
 Response via : Initial Calibration
 Integrator: ChemStation

Volume Inj. : 1 µl
 Signal #1 Phase : ZB-MR2 Signal #2 Phase: ZB-MR1
 Signal #1 Info : 30M x 0.32mm x0.2 Signal #2 Info : 30M x 0.32mm x0.5µm

	Compound	RT#1	RT#2	Resp#1	Resp#2	ng/ml	ng/ml

System Monitoring Compounds							
1)	SA Tetrachlo...	4.643	5.492	3307519	12714093	10.327	7.747
28)	SA Decachlor...	10.418	11.329	4756526	15121080	9.354	8.456
Target Compounds							
5)	MB Aldrin	6.542f	0.000	47879	0	0.116	N.D. #
6)	B beta-BHC	0.000	6.706f	0	279712	N.D.	0.268 #
7)	B delta-BHC	6.423	6.958	27209	1356219	0.068	0.630 #
9)	A Endosulfan I	0.000	8.311f	0	22394	N.D.	0.012 #
10)	B gamma-Chl...	7.383f	8.170f	336132	1163469	0.769	0.570 #
11)	B alpha-Chl...	7.435	8.283	38365	213576	0.087	0.107
12)	B 4,4'-DDE	7.649	8.460	1796486	5978519	5.006	3.336 #
13)	MA Dieldrin	7.786	0.000	17068	0	0.041	N.D. #
14)	MA Endrin	8.089f	0.000	1180461	0	3.042	N.D. #
15)	B Endosulfa...	8.386	0.000	39650	0	0.101	N.D. #
16)	A 4,4'-DDD	8.234	8.987	327649	1041615	1.009	0.714 #
17)	MA 4,4'-DDT	8.496	9.305	3672192	10676460	9.710	6.532 #
18)	B Endrin al...	8.587f	0.000	16447	0	0.052	N.D. #
20)	A Methoxychlor	9.112f	0.000	36259	0	0.141	N.D. #
21)	B Endrin ke...	0.000	9.908f	0	84132	N.D.	0.051 #
23)	Chlordane-1	5.991f	6.860	137774	758685	11.622	11.106
25)	Chlordane-3	7.383	8.170f	336132	1163469	8.232	4.291 #
26)	Chlordane-4	7.435	8.283	38365	213576	0.866	0.645 #
27)	Chlordane-5	8.386	0.000	39650	0	2.421	N.D. #

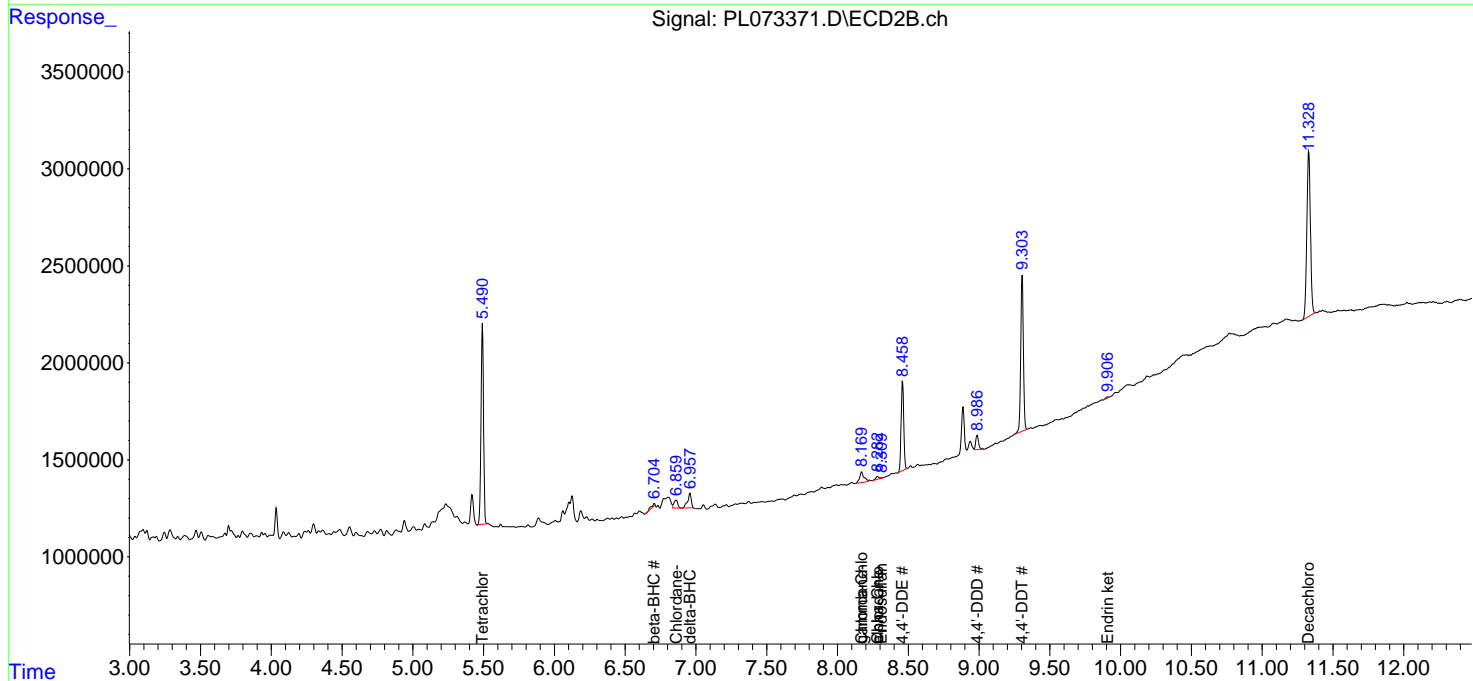
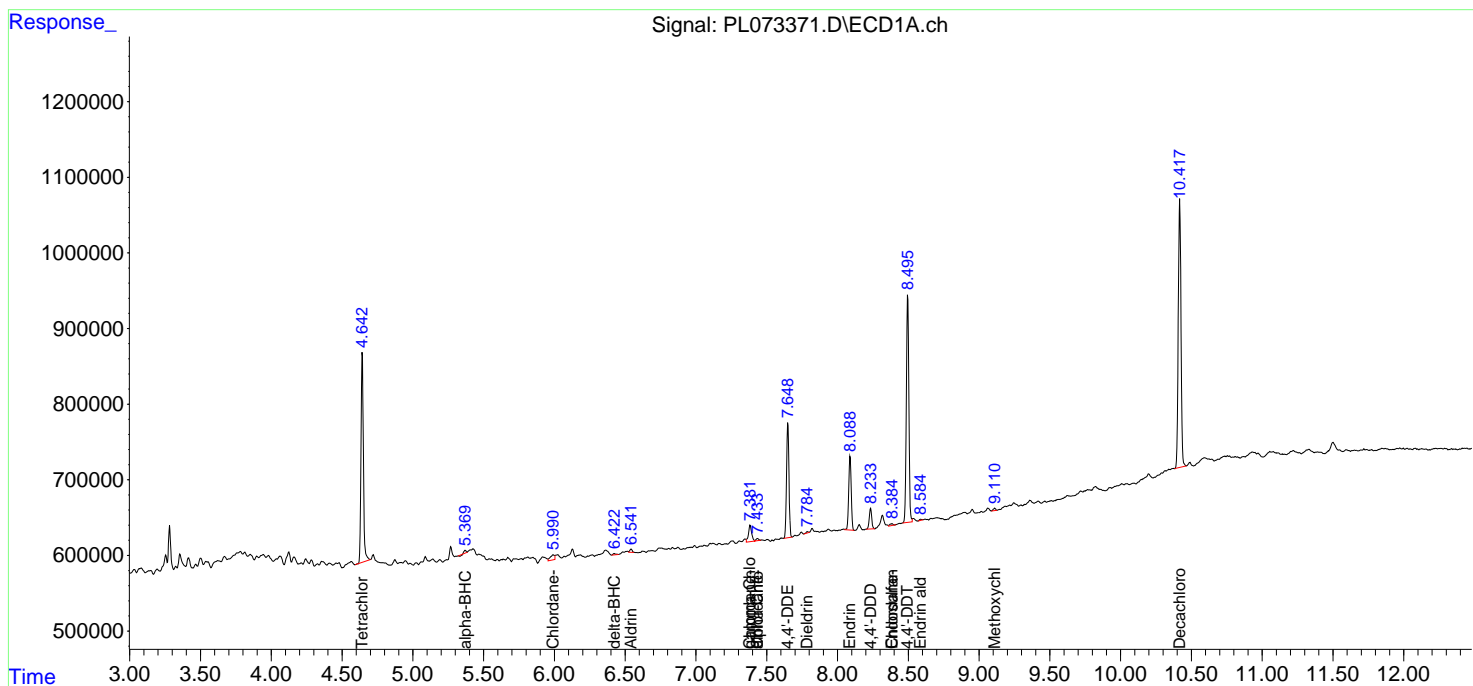
(f)=RT Delta > 1/2 Window (#)=Amounts differ by > 25% (m)=manual int.

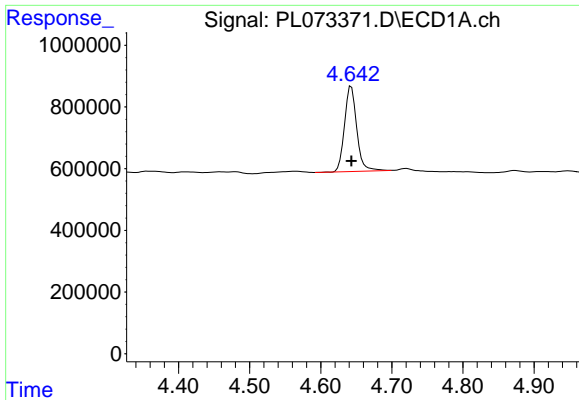
Data Path : Z:\pestpcbsrv\HPCHEM1\ECD_L\Data\PL031422\
 Data File : PL073371.D
 Signal(s) : Signal #1: ECD1A.ch Signal #2: ECD2B.ch
 Acq On : 15 Mar 2022 02:27
 Operator : AR\AJ
 Sample : N1908-01
 Misc :
 ALS Vial : 40 Sample Multiplier: 1

Instrument :
 ECD_L
 ClientSampleId :

Integration File signal 1: autoint1.e
 Integration File signal 2: autoint2.e
 Quant Time: Mar 15 05:22:05 2022
 Quant Method : Z:\pestpcbsrv\HPCHEM1\ECD_L\methods\PL031122.M
 Quant Title : GC Extractables
 QLast Update : Mon Mar 14 04:12:46 2022
 Response via : Initial Calibration
 Integrator: ChemStation

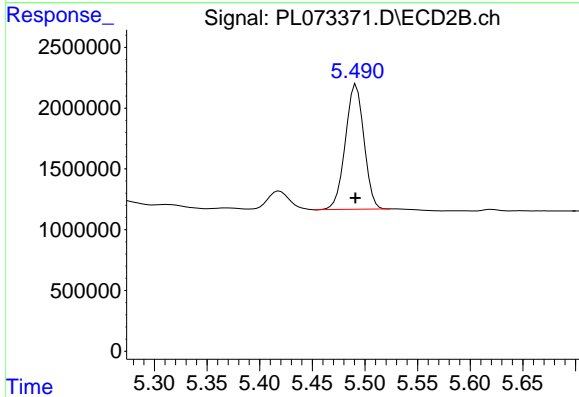
Volume Inj. : 1 µl
 Signal #1 Phase : ZB-MR2 Signal #2 Phase: ZB-MR1
 Signal #1 Info : 30M x 0.32mm x0.2 Signal #2 Info : 30M x 0.32mm x0.5µm



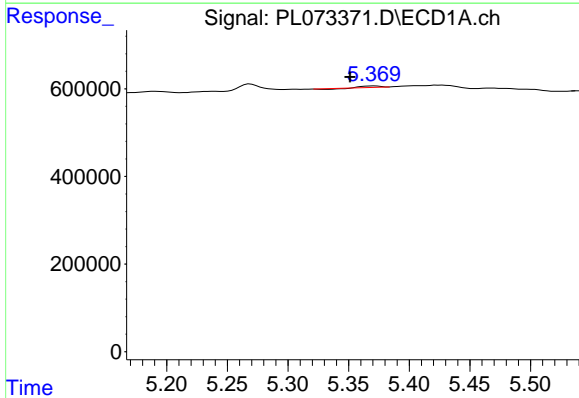


#1 Tetrachloro-m-xylene
 R.T.: 4.643 min
 Delta R.T.: 0.000 min
 Response: 3307519
 Conc: 10.33 ng/ml

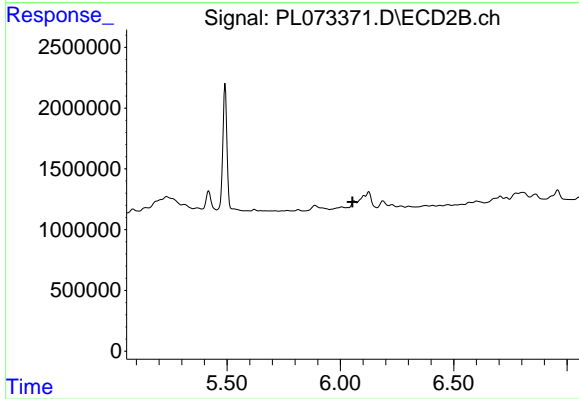
Instrument :
 ECD_L
 ClientSampleId :



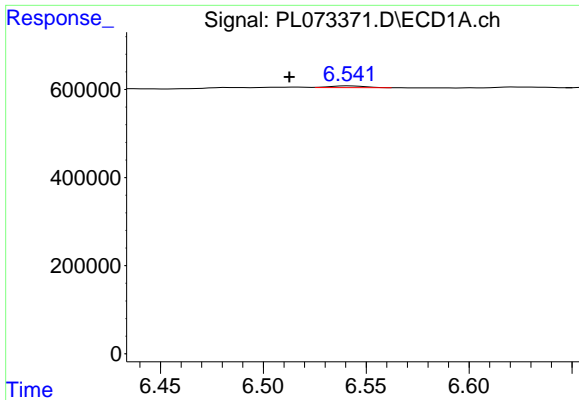
#1 Tetrachloro-m-xylene
 R.T.: 5.492 min
 Delta R.T.: 0.000 min
 Response: 12714093
 Conc: 7.75 ng/ml



#2 alpha-BHC
 R.T.: 5.370 min
 Delta R.T.: 0.019 min
 Response: 18175
 Conc: 0.04 ng/ml

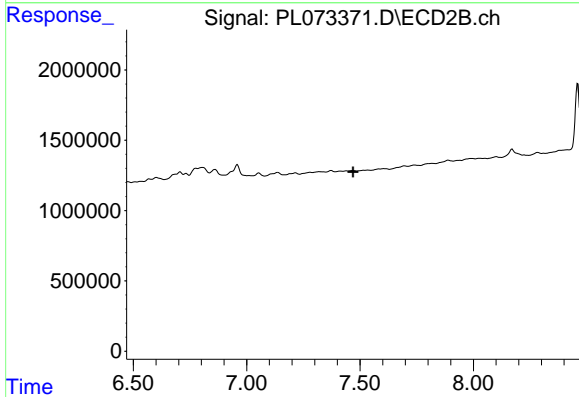


#2 alpha-BHC
 R.T.: 6.061 min
 Delta R.T.: 0.007 min
 Response: -123707
 Conc: N.D.

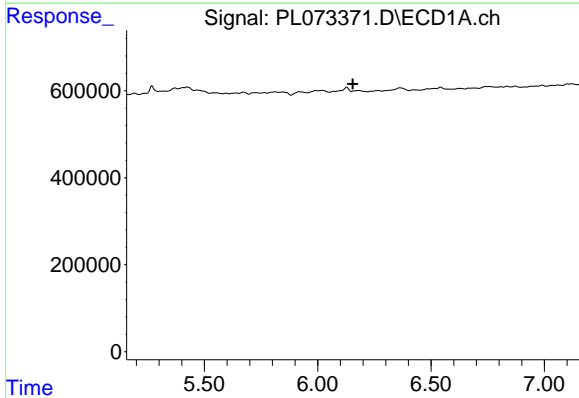


#5 Aldrin
 R.T.: 6.542 min
 Delta R.T.: 0.029 min
 Response: 47879
 Conc: 0.12 ng/ml

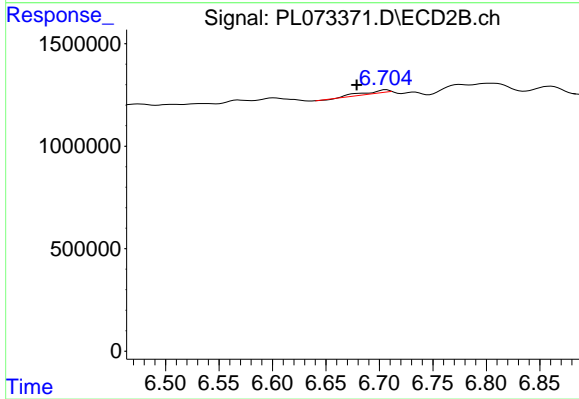
Instrument :
 ECD_L
 ClientSampleId :



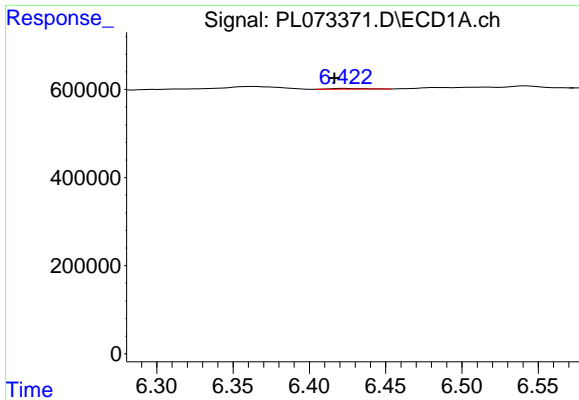
#5 Aldrin
 R.T.: 0.000 min
 Exp R.T. : 7.470 min
 Response: 0
 Conc: N.D.



#6 beta-BHC
 R.T.: 0.000 min
 Exp R.T. : 6.155 min
 Response: 0
 Conc: N.D.



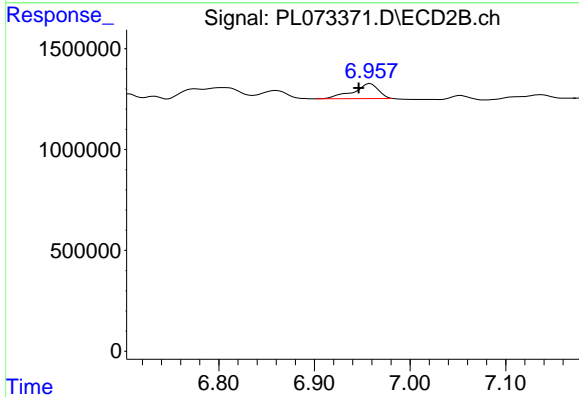
#6 beta-BHC
 R.T.: 6.706 min
 Delta R.T.: 0.028 min
 Response: 279712
 Conc: 0.27 ng/ml



#7 delta-BHC

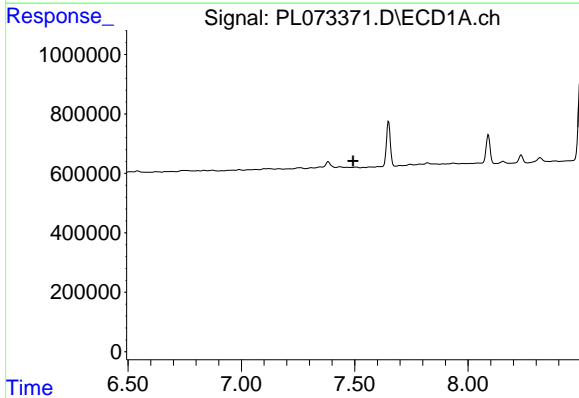
R.T.: 6.423 min
 Delta R.T.: 0.006 min
 Response: 27209
 Conc: 0.07 ng/ml

Instrument :
 ECD_L
 ClientSampleId :



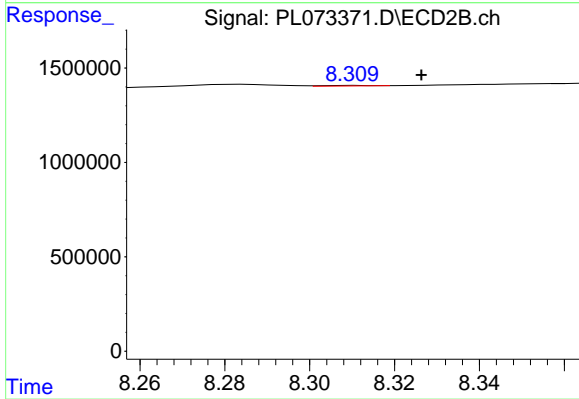
#7 delta-BHC

R.T.: 6.958 min
 Delta R.T.: 0.012 min
 Response: 1356219
 Conc: 0.63 ng/ml



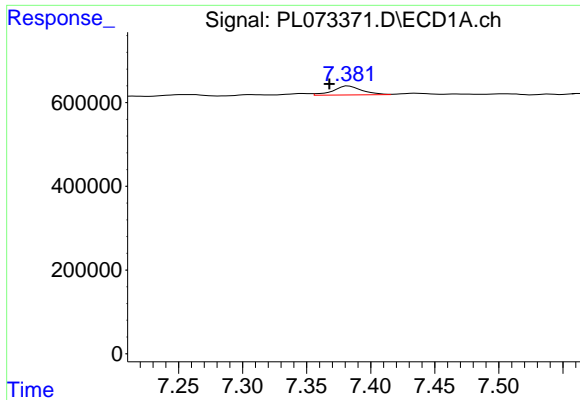
#9 Endosulfan I

R.T.: 0.000 min
 Exp R.T. : 7.493 min
 Response: 0
 Conc: N.D.



#9 Endosulfan I

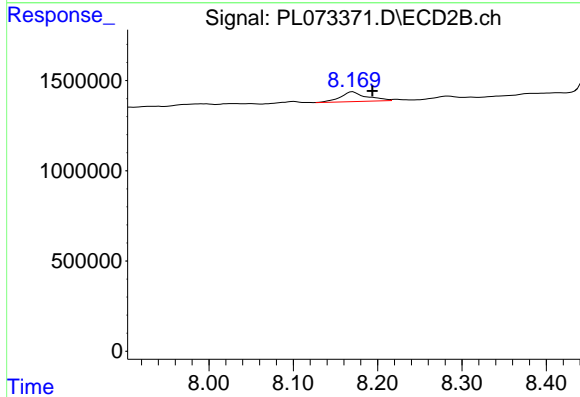
R.T.: 8.311 min
 Delta R.T.: -0.016 min
 Response: 22394
 Conc: 0.01 ng/ml



#10 gamma-Chlordane

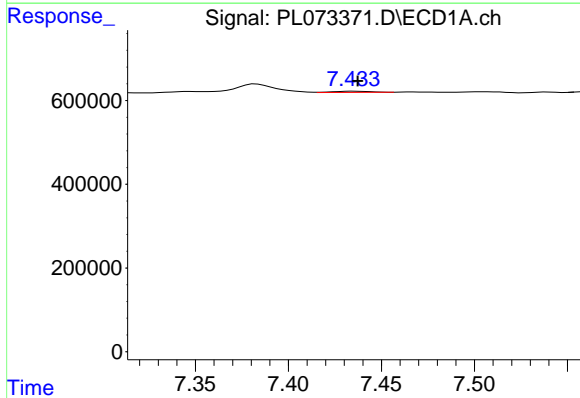
R.T.: 7.383 min
 Delta R.T.: 0.015 min
 Response: 336132
 Conc: 0.77 ng/ml

Instrument :
 ECD_L
 ClientSampleId :



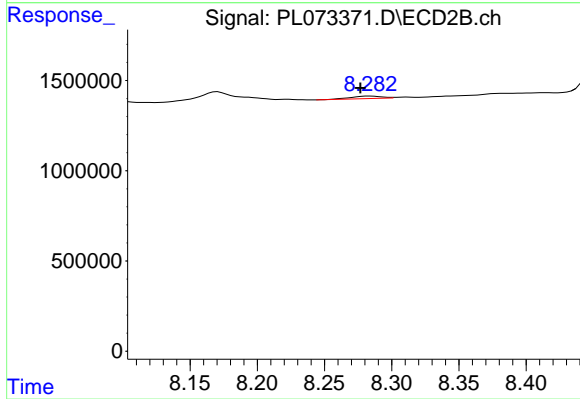
#10 gamma-Chlordane

R.T.: 8.170 min
 Delta R.T.: -0.023 min
 Response: 1163469
 Conc: 0.57 ng/ml



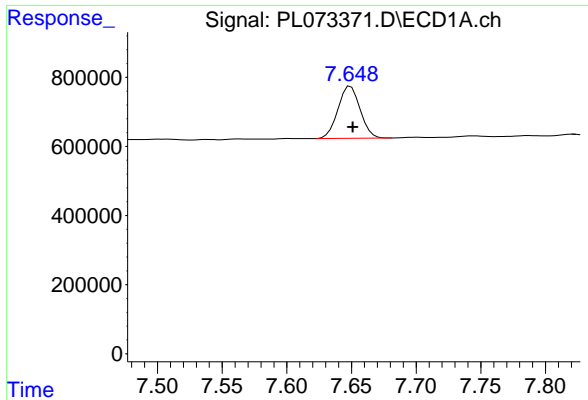
#11 alpha-Chlordane

R.T.: 7.435 min
 Delta R.T.: -0.002 min
 Response: 38365
 Conc: 0.09 ng/ml



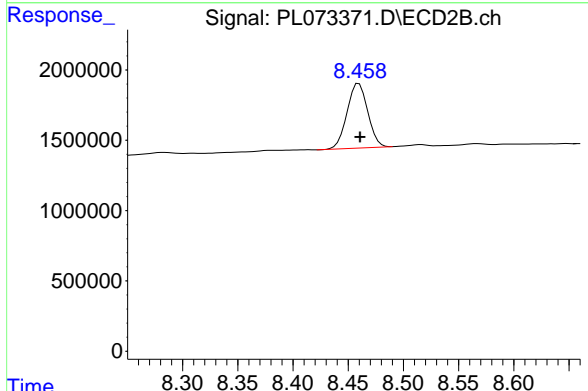
#11 alpha-Chlordane

R.T.: 8.283 min
 Delta R.T.: 0.007 min
 Response: 213576
 Conc: 0.11 ng/ml

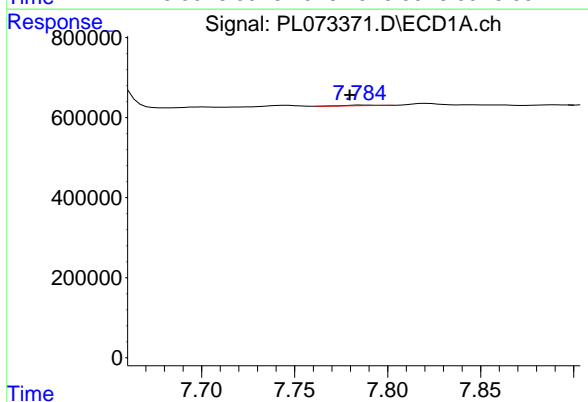


#12 4,4'-DDE
 R.T.: 7.649 min
 Delta R.T.: -0.002 min
 Response: 1796486
 Conc: 5.01 ng/ml

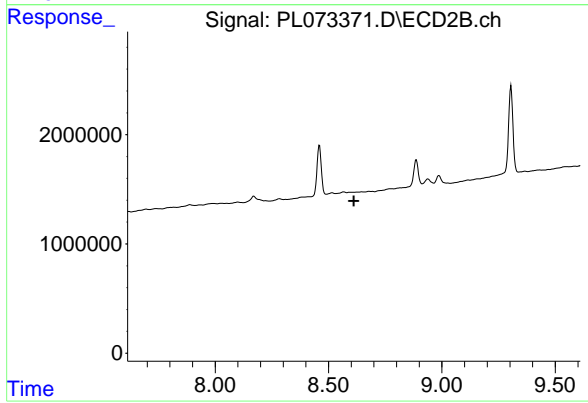
Instrument :
 ECD_L
 ClientSampleId :



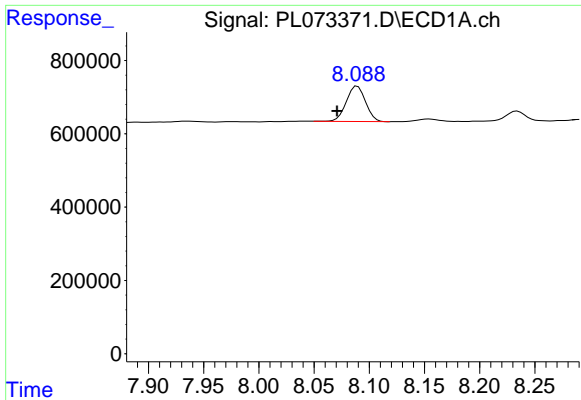
#12 4,4'-DDE
 R.T.: 8.460 min
 Delta R.T.: -0.001 min
 Response: 5978519
 Conc: 3.34 ng/ml



#13 Dieldrin
 R.T.: 7.786 min
 Delta R.T.: 0.007 min
 Response: 17068
 Conc: 0.04 ng/ml



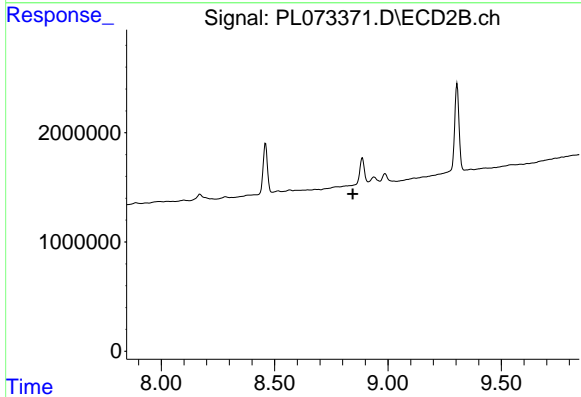
#13 Dieldrin
 R.T.: 0.000 min
 Exp R.T. : 8.611 min
 Response: 0
 Conc: N.D.



#14 Endrin

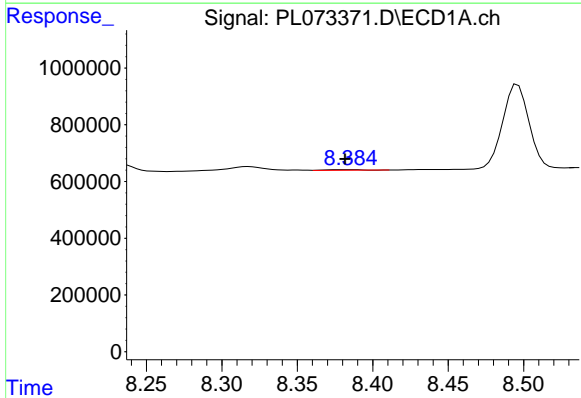
R.T.: 8.089 min
 Delta R.T.: 0.018 min
 Response: 1180461
 Conc: 3.04 ng/ml

Instrument :
 ECD_L
 ClientSampleId :



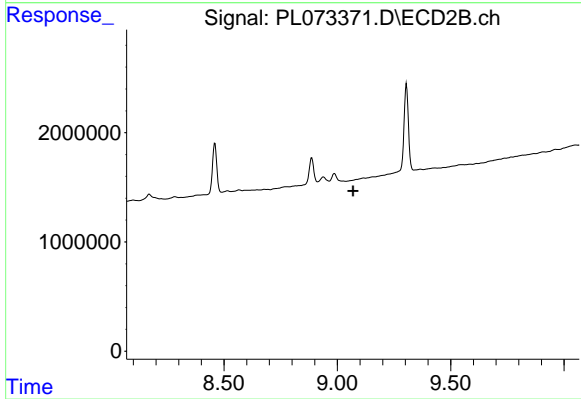
#14 Endrin

R.T.: 0.000 min
 Exp R.T. : 8.845 min
 Response: 0
 Conc: N.D.



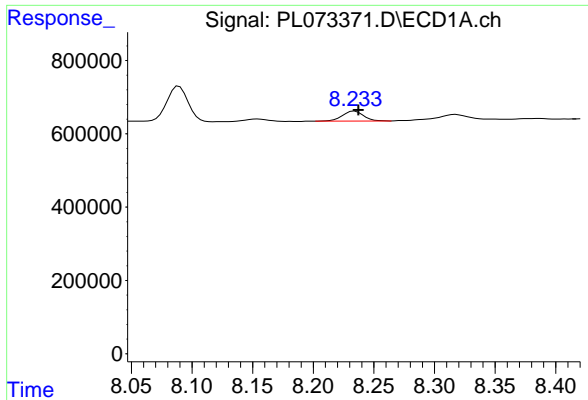
#15 Endosulfan II

R.T.: 8.386 min
 Delta R.T.: 0.005 min
 Response: 39650
 Conc: 0.10 ng/ml



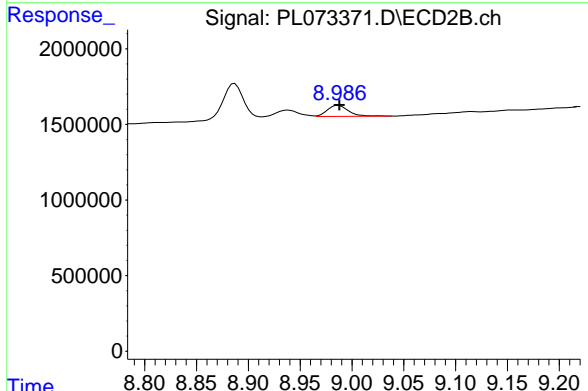
#15 Endosulfan II

R.T.: 0.000 min
 Exp R.T. : 9.069 min
 Response: 0
 Conc: N.D.

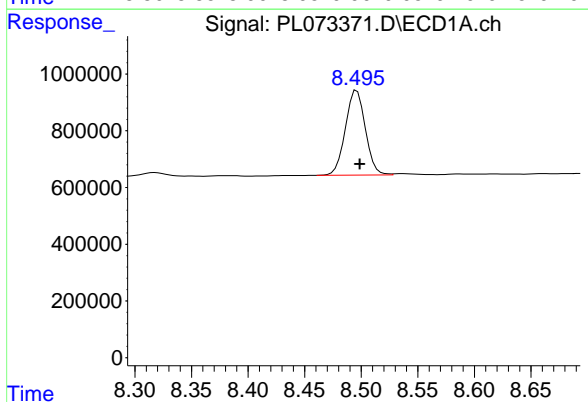


#16 4,4'-DDD
 R.T.: 8.234 min
 Delta R.T.: -0.003 min
 Response: 327649
 Conc: 1.01 ng/ml

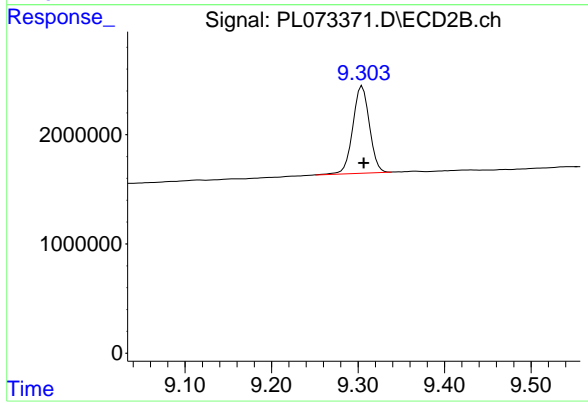
Instrument :
 ECD_L
 ClientSampleId :



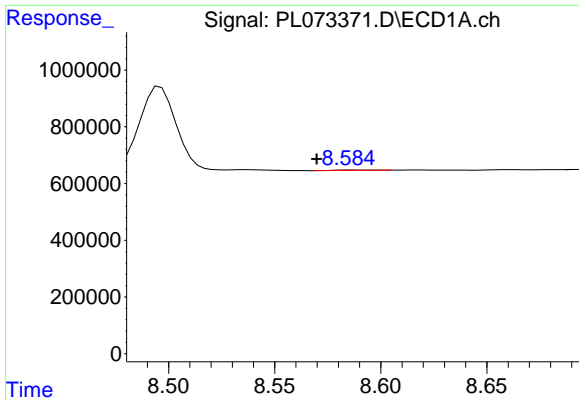
#16 4,4'-DDD
 R.T.: 8.987 min
 Delta R.T.: -0.001 min
 Response: 1041615
 Conc: 0.71 ng/ml



#17 4,4'-DDT
 R.T.: 8.496 min
 Delta R.T.: -0.003 min
 Response: 3672192
 Conc: 9.71 ng/ml



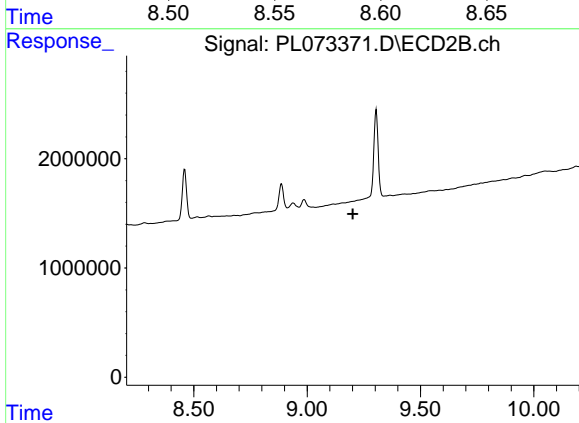
#17 4,4'-DDT
 R.T.: 9.305 min
 Delta R.T.: -0.002 min
 Response: 10676460
 Conc: 6.53 ng/ml



#18 Endrin aldehyde

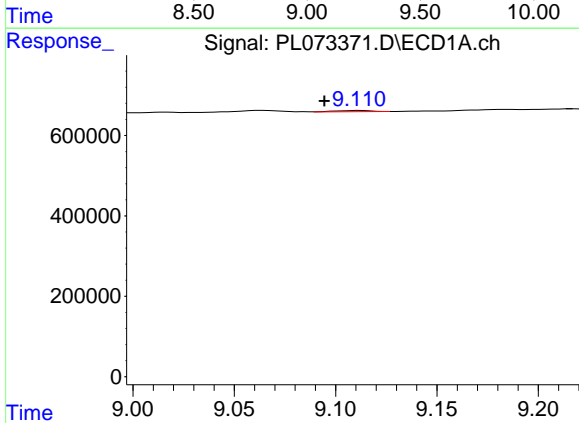
R.T.: 8.587 min
 Delta R.T.: 0.017 min
 Response: 16447
 Conc: 0.05 ng/ml

Instrument :
 ECD_L
 ClientSampleId :



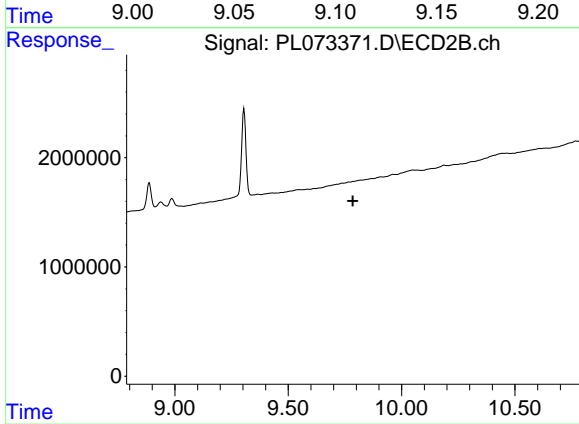
#18 Endrin aldehyde

R.T.: 0.000 min
 Exp R.T. : 9.202 min
 Response: 0
 Conc: N.D.



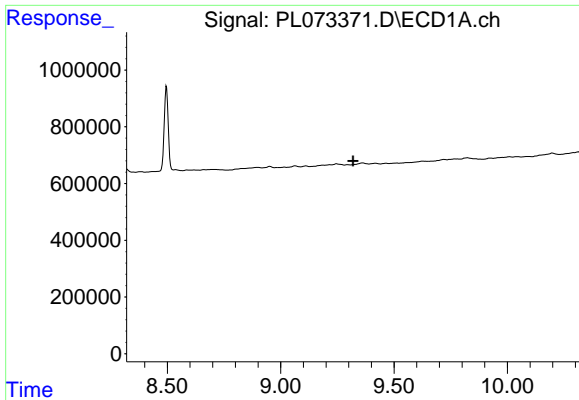
#20 Methoxychlor

R.T.: 9.112 min
 Delta R.T.: 0.017 min
 Response: 36259
 Conc: 0.14 ng/ml



#20 Methoxychlor

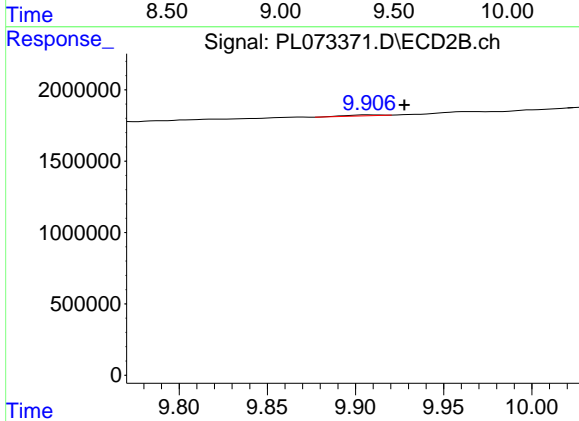
R.T.: 0.000 min
 Exp R.T. : 9.786 min
 Response: 0
 Conc: N.D.



#21 Endrin ketone

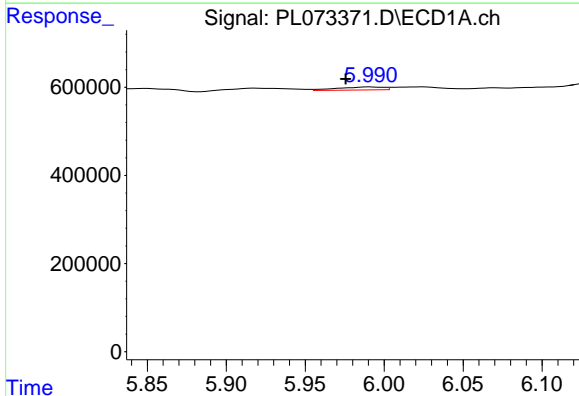
R.T.: 0.000 min
 Exp R.T.: 9.320 min
 Response: 0
 Conc: N.D.

Instrument :
 ECD_L
 ClientSampleId :



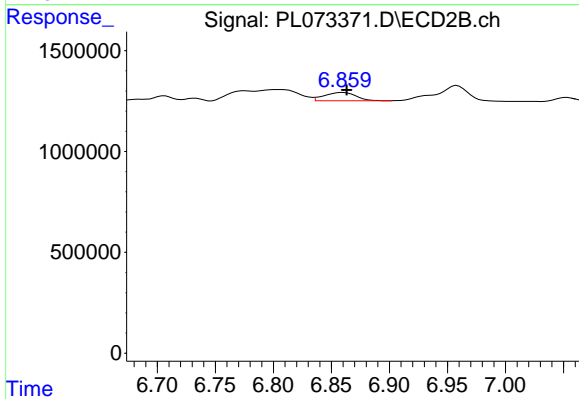
#21 Endrin ketone

R.T.: 9.908 min
 Delta R.T.: -0.020 min
 Response: 84132
 Conc: 0.05 ng/ml



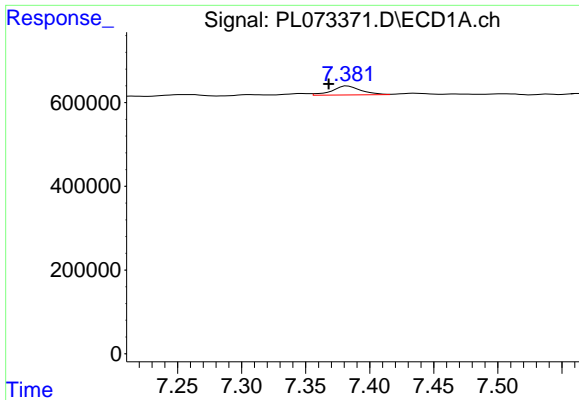
#23 Chlordane-1

R.T.: 5.991 min
 Delta R.T.: 0.016 min
 Response: 137774
 Conc: 11.62 ng/ml



#23 Chlordane-1

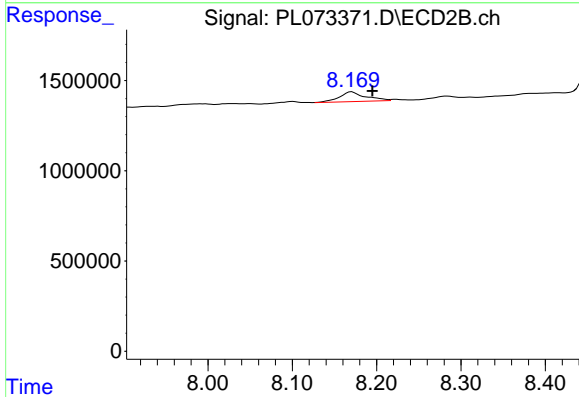
R.T.: 6.860 min
 Delta R.T.: -0.003 min
 Response: 758685
 Conc: 11.11 ng/ml



#25 Chlordane-3

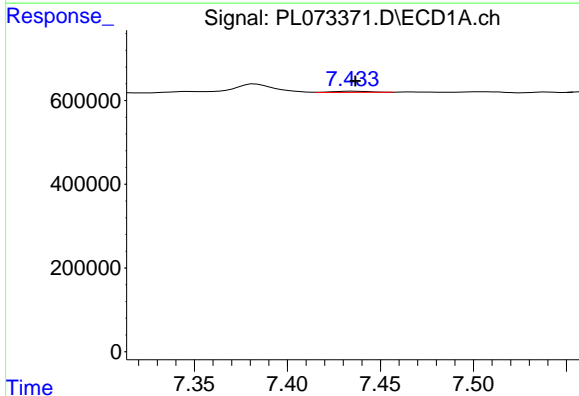
R.T.: 7.383 min
 Delta R.T.: 0.015 min
 Response: 336132
 Conc: 8.23 ng/ml

Instrument :
 ECD_L
 ClientSampleId :



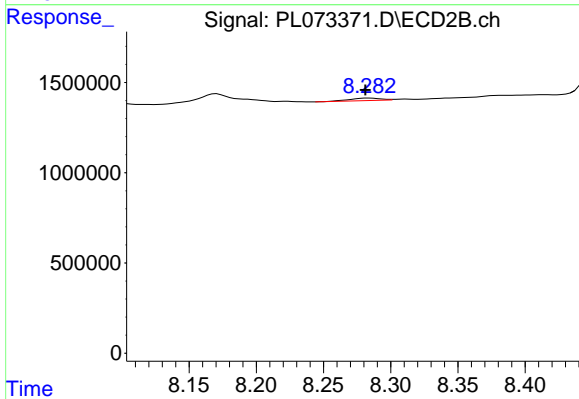
#25 Chlordane-3

R.T.: 8.170 min
 Delta R.T.: -0.025 min
 Response: 1163469
 Conc: 4.29 ng/ml



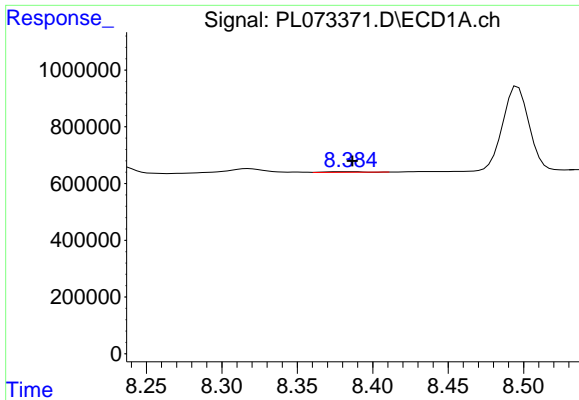
#26 Chlordane-4

R.T.: 7.435 min
 Delta R.T.: -0.002 min
 Response: 38365
 Conc: 0.87 ng/ml



#26 Chlordane-4

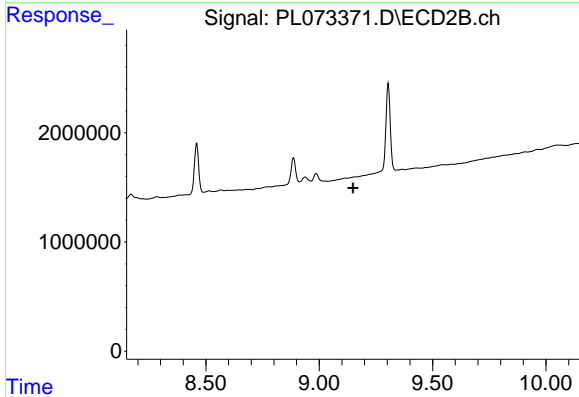
R.T.: 8.283 min
 Delta R.T.: 0.002 min
 Response: 213576
 Conc: 0.64 ng/ml



#27 Chlordane-5

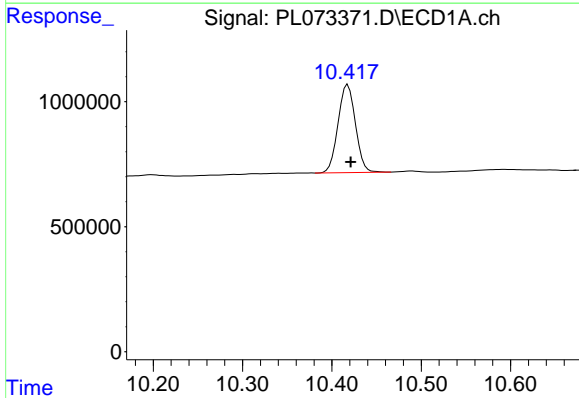
R.T.: 8.386 min
 Delta R.T.: 0.000 min
 Response: 39650
 Conc: 2.42 ng/ml

Instrument :
 ECD_L
 ClientSampleId :



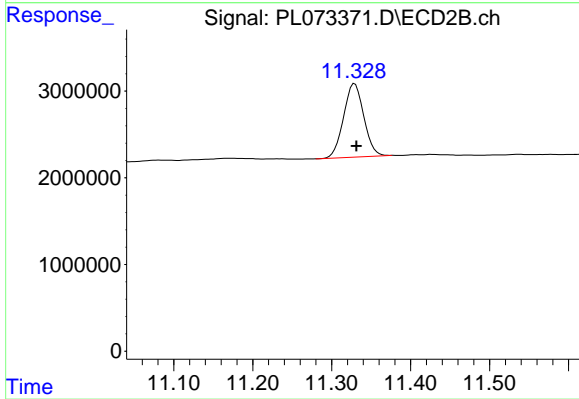
#27 Chlordane-5

R.T.: 0.000 min
 Exp R.T. : 9.149 min
 Response: 0
 Conc: N.D.



#28 Decachlorobiphenyl

R.T.: 10.418 min
 Delta R.T.: -0.003 min
 Response: 4756526
 Conc: 9.35 ng/ml



#28 Decachlorobiphenyl

R.T.: 11.329 min
 Delta R.T.: -0.002 min
 Response: 15121080
 Conc: 8.46 ng/ml