

Data Path : Z:\pestpcbsrv\HPCHEM1\ECD_L\Data\PL031422\
 Data File : PL073376.D
 Signal(s) : Signal #1: ECD1A.ch Signal #2: ECD2B.ch
 Acq On : 15 Mar 2022 03:51
 Operator : AR\AJ
 Sample : N1912-01
 Misc :
 ALS Vial : 45 Sample Multiplier: 1

Instrument :
 ECD_L
 ClientSampleId :
 VNJ-242

Integration File signal 1: autoint1.e
 Integration File signal 2: autoint2.e
 Quant Time: Mar 15 05:25:27 2022
 Quant Method : Z:\pestpcbsrv\HPCHEM1\ECD_L\methods\PL031122.M
 Quant Title : GC Extractables
 QLast Update : Mon Mar 14 04:12:46 2022
 Response via : Initial Calibration
 Integrator: ChemStation

Volume Inj. : 1 µl
 Signal #1 Phase : ZB-MR2 Signal #2 Phase: ZB-MR1
 Signal #1 Info : 30M x 0.32mm x0.2 Signal #2 Info : 30M x 0.32mm x0.5µm

Compound	RT#1	RT#2	Resp#1	Resp#2	ng/ml	ng/ml

System Monitoring Compounds						
1) SA Tetrachlo...	4.642	5.491	3138431	9798921	9.799	5.970 #
28) SA Decachlor...	10.418	11.329	4191058	13280420	8.242	7.427
Target Compounds						
2) A alpha-BHC	5.380f	0.000	302	0	0.001	N.D. #
6) B beta-BHC	0.000	6.682	0	303421	N.D.	0.291 #
7) B delta-BHC	0.000	6.957	0	1204519	N.D.	0.559 #
9) A Endosulfan I	0.000	8.325	0	7926	N.D.	0.004 #
10) B gamma-Chl...	7.350f	8.200	135468	611185	0.310	0.299
11) B alpha-Chl...	7.433	8.283	49933	451675	0.113	0.226 #
12) B 4,4'-DDE	0.000	8.459	0	50209	N.D.	0.028 #
13) MA Dieldrin	7.788	0.000	36164	0	0.087	N.D. #
14) MA Endrin	8.090f	8.869f	99586	92439	0.257	0.060 #
15) B Endosulfa...	8.384	9.074	71870	55830	0.184	0.036 #
16) A 4,4'-DDD	0.000	9.001	0	313098	N.D.	0.214 #
17) MA 4,4'-DDT	8.492	9.328f	107516	110903	0.284	0.068 #
19) B Endosulfa...	8.802	0.000	33816	0	0.080	N.D. #
20) A Methoxychlor	9.109	0.000	4948	0	0.019	N.D. #
21) B Endrin ke...	0.000	9.935	0	9241	N.D.	0.006 #
23) Chlordane-1	0.000	6.853	0	458957	N.D.	6.718 #
25) Chlordane-3	7.350f	8.200	135468	611185	3.318	2.254 #
26) Chlordane-4	7.433	8.283	49933	451675	1.127	1.364
27) Chlordane-5	8.384	0.000	71870	0	4.389	N.D. #

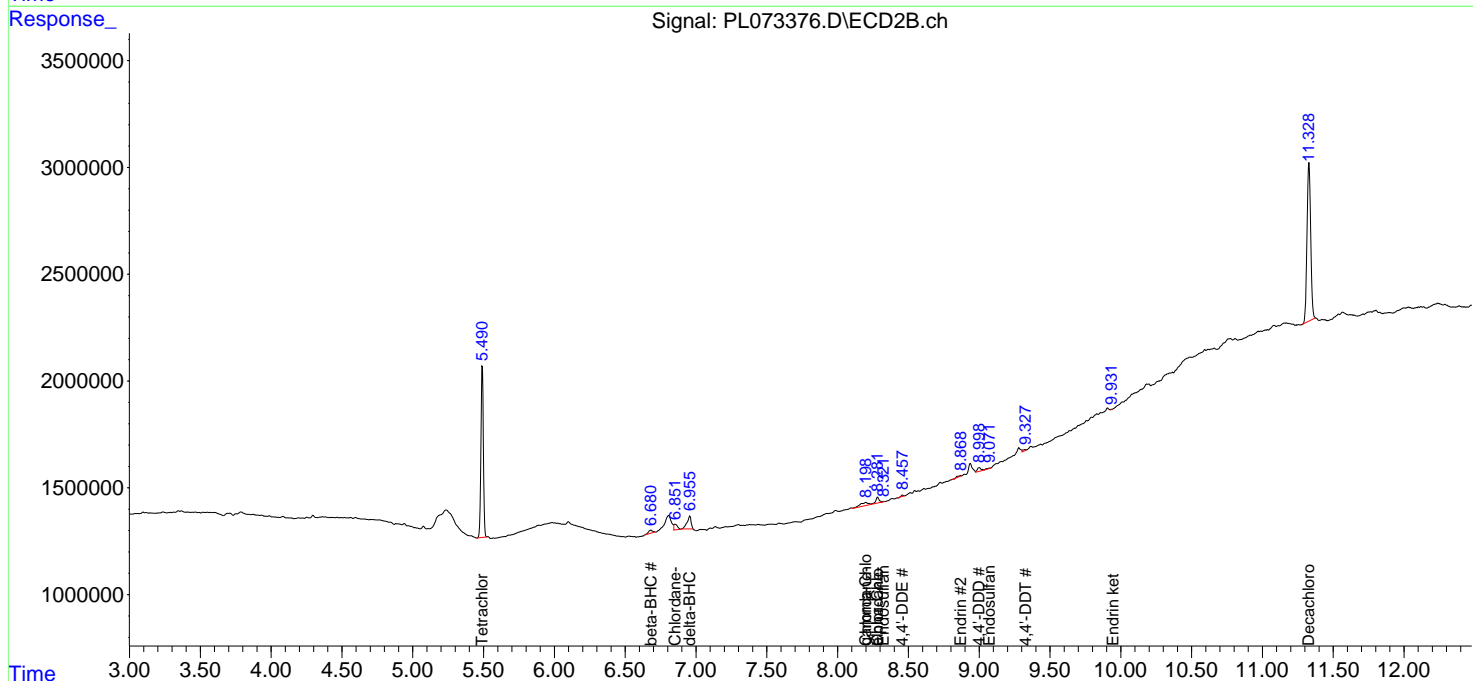
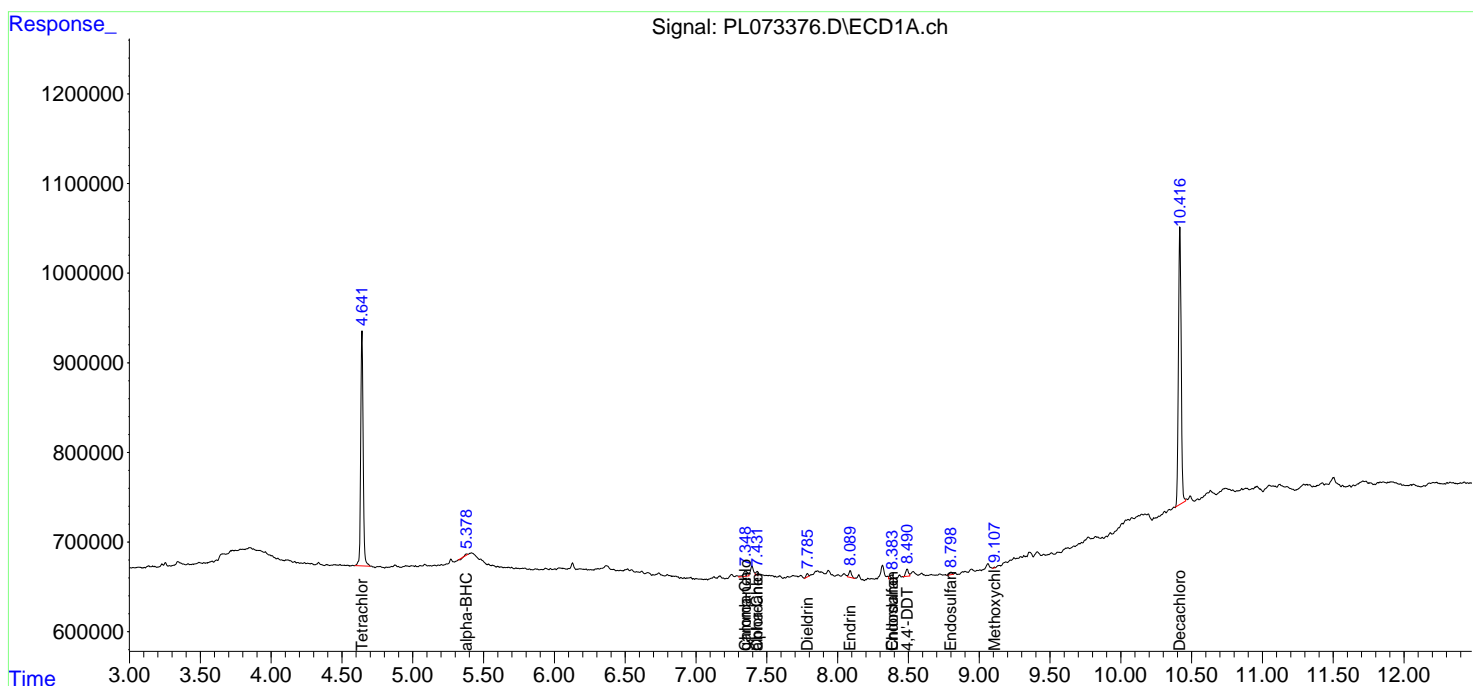
(f)=RT Delta > 1/2 Window (#)=Amounts differ by > 25% (m)=manual int.

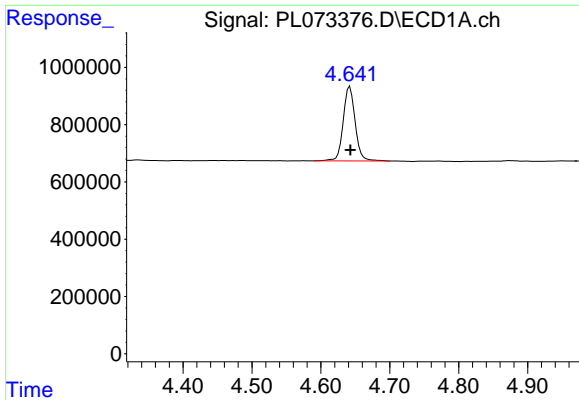
Data Path : Z:\pestpcbsrv\HPCHEM1\ECD_L\Data\PL031422\
 Data File : PL073376.D
 Signal(s) : Signal #1: ECD1A.ch Signal #2: ECD2B.ch
 Acq On : 15 Mar 2022 03:51
 Operator : AR\AJ
 Sample : N1912-01
 Misc :
 ALS Vial : 45 Sample Multiplier: 1

Instrument :
 ECD_L
 ClientSampleId :
 VNJ-242

Integration File signal 1: autoint1.e
 Integration File signal 2: autoint2.e
 Quant Time: Mar 15 05:25:27 2022
 Quant Method : Z:\pestpcbsrv\HPCHEM1\ECD_L\methods\PL031122.M
 Quant Title : GC Extractables
 QLast Update : Mon Mar 14 04:12:46 2022
 Response via : Initial Calibration
 Integrator: ChemStation

Volume Inj. : 1 µl
 Signal #1 Phase : ZB-MR2 Signal #2 Phase: ZB-MR1
 Signal #1 Info : 30M x 0.32mm x0.2 Signal #2 Info : 30M x 0.32mm x0.5µm

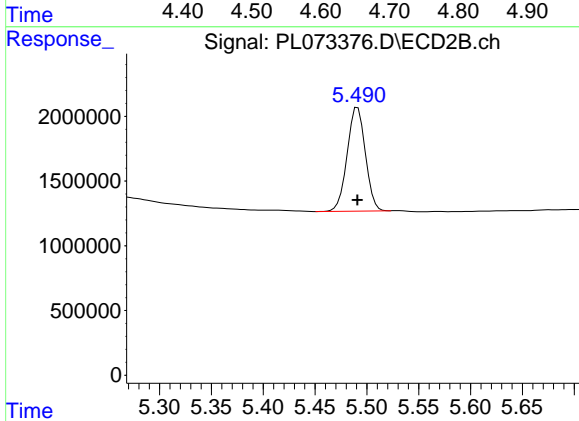




#1 Tetrachloro-m-xylene

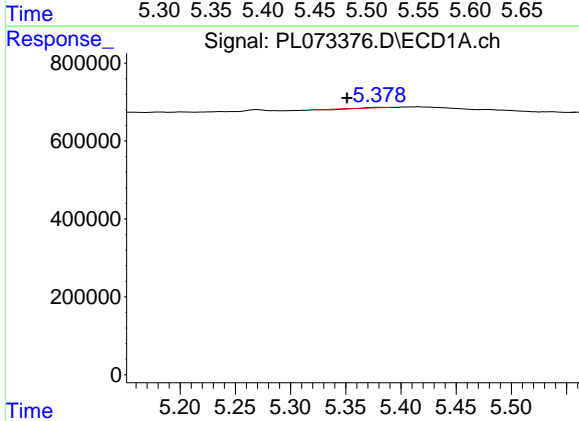
R.T.: 4.642 min
 Delta R.T.: 0.000 min
 Response: 3138431
 Conc: 9.80 ng/ml

Instrument : ECD_L
 ClientSampleId : VNJ-242



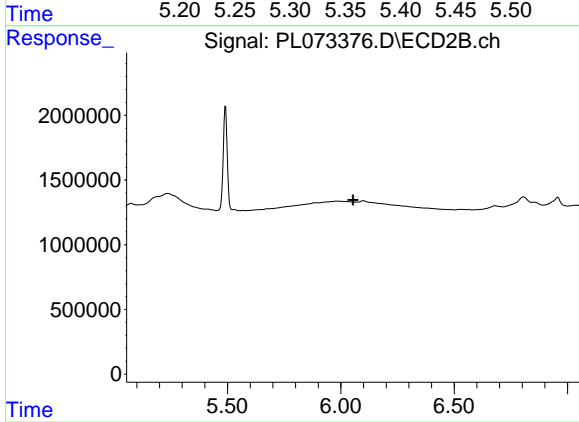
#1 Tetrachloro-m-xylene

R.T.: 5.491 min
 Delta R.T.: 0.000 min
 Response: 9798921
 Conc: 5.97 ng/ml



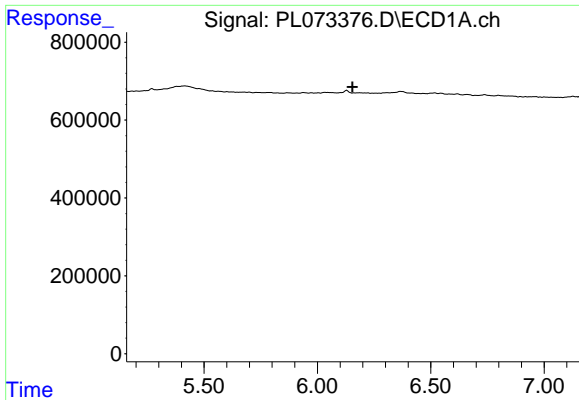
#2 alpha-BHC

R.T.: 5.380 min
 Delta R.T.: 0.029 min
 Response: 302
 Conc: 0.00 ng/ml



#2 alpha-BHC

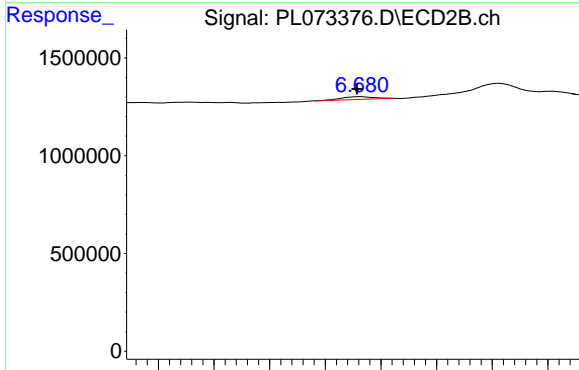
R.T.: 0.000 min
 Exp R.T. : 6.054 min
 Response: 0
 Conc: N.D.



#6 beta-BHC

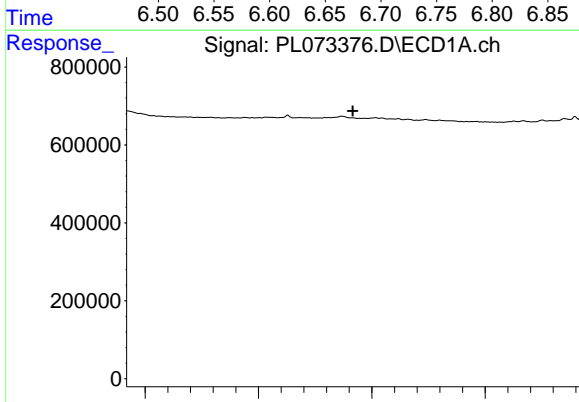
R.T.: 0.000 min
 Exp R.T.: 6.155 min
 Response: 0
 Conc: N.D.

Instrument : ECD_L
 ClientSampleId : VNJ-242



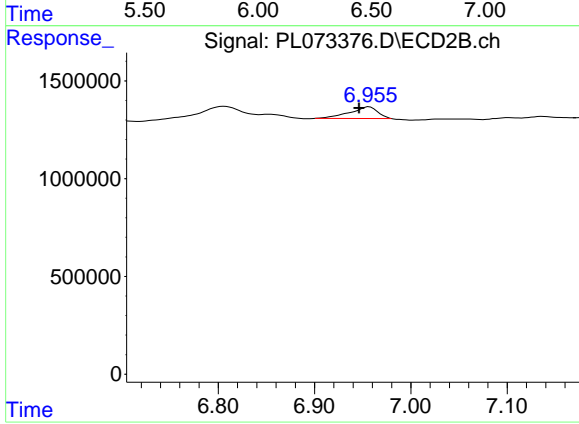
#6 beta-BHC

R.T.: 6.682 min
 Delta R.T.: 0.003 min
 Response: 303421
 Conc: 0.29 ng/ml



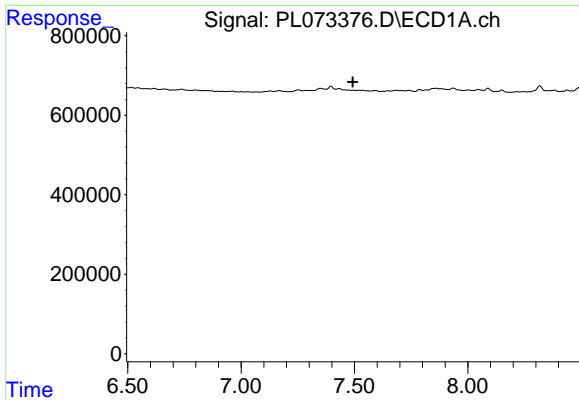
#7 delta-BHC

R.T.: 0.000 min
 Exp R.T.: 6.416 min
 Response: 0
 Conc: N.D.



#7 delta-BHC

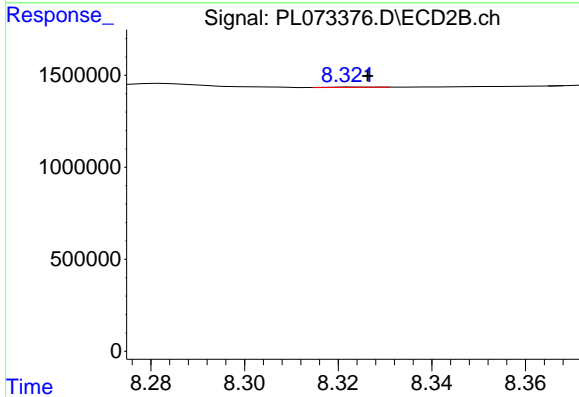
R.T.: 6.957 min
 Delta R.T.: 0.010 min
 Response: 1204519
 Conc: 0.56 ng/ml



#9 Endosulfan I

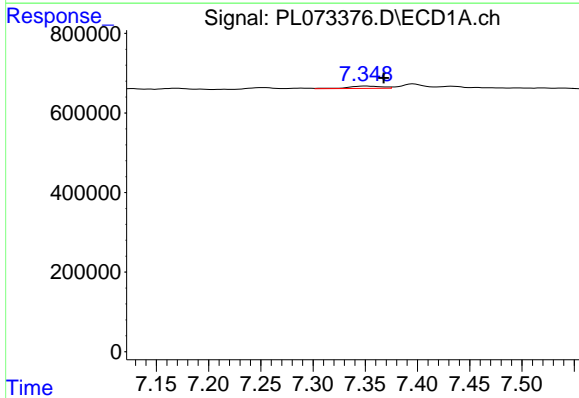
R.T.: 0.000 min
 Exp R.T.: 7.493 min
 Response: 0
 Conc: N.D.

Instrument : ECD_L
 ClientSampleId : VNJ-242



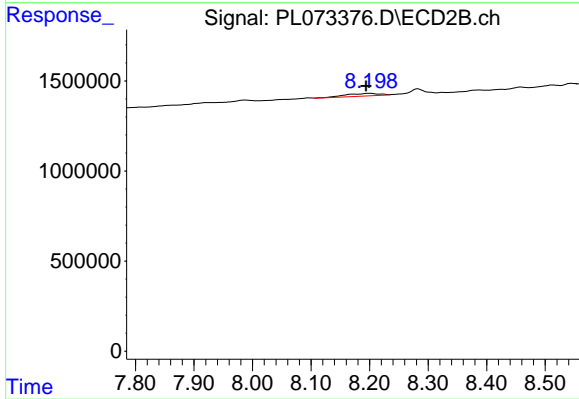
#9 Endosulfan I

R.T.: 8.325 min
 Delta R.T.: -0.001 min
 Response: 7926
 Conc: 0.00 ng/ml



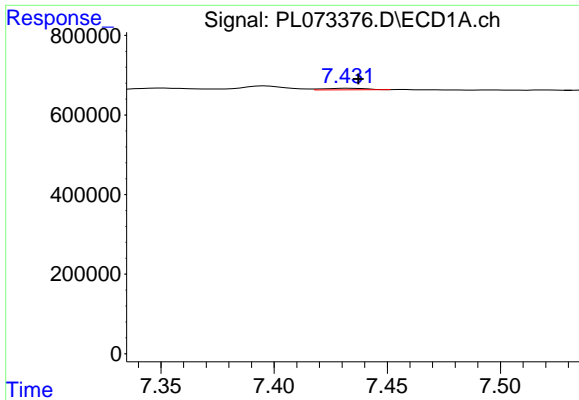
#10 gamma-Chlordane

R.T.: 7.350 min
 Delta R.T.: -0.018 min
 Response: 135468
 Conc: 0.31 ng/ml



#10 gamma-Chlordane

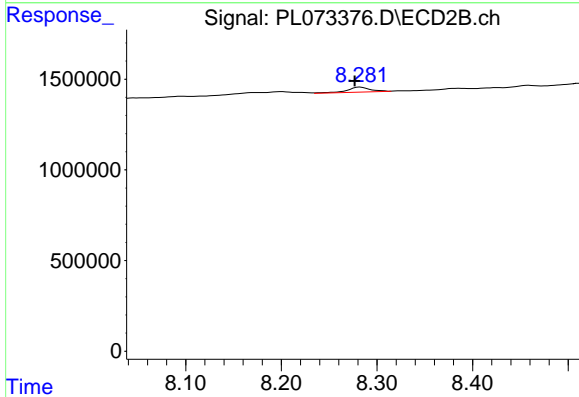
R.T.: 8.200 min
 Delta R.T.: 0.006 min
 Response: 611185
 Conc: 0.30 ng/ml



#11 alpha-Chlordane

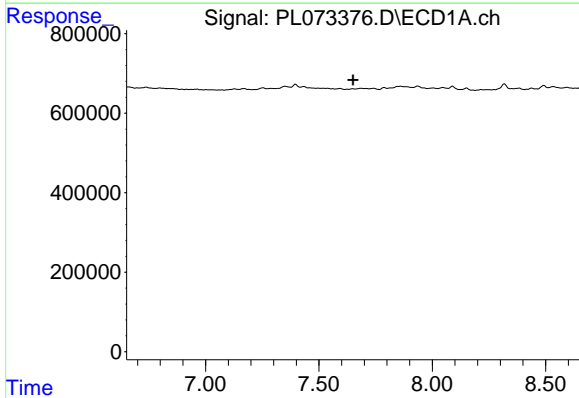
R.T.: 7.433 min
 Delta R.T.: -0.004 min
 Response: 49933
 Conc: 0.11 ng/ml

Instrument :
 ECD_L
 ClientSampleId :
 VNJ-242



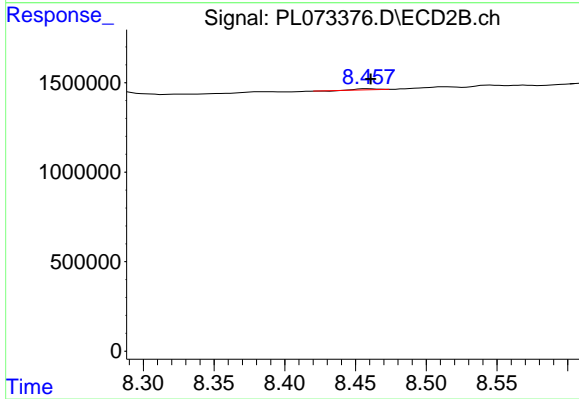
#11 alpha-Chlordane

R.T.: 8.283 min
 Delta R.T.: 0.006 min
 Response: 451675
 Conc: 0.23 ng/ml



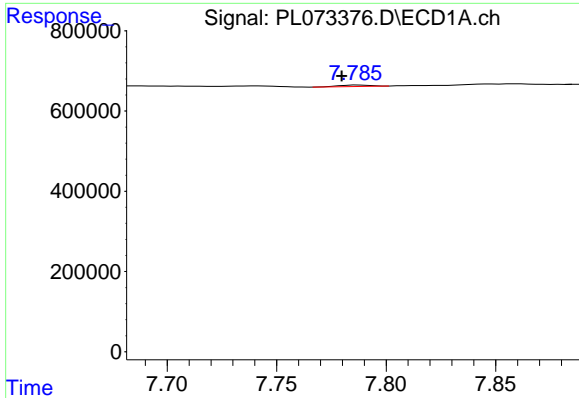
#12 4,4'-DDE

R.T.: 0.000 min
 Exp R.T. : 7.651 min
 Response: 0
 Conc: N.D.



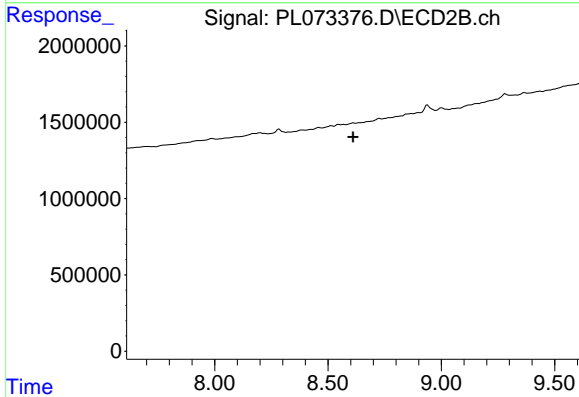
#12 4,4'-DDE

R.T.: 8.459 min
 Delta R.T.: -0.002 min
 Response: 50209
 Conc: 0.03 ng/ml

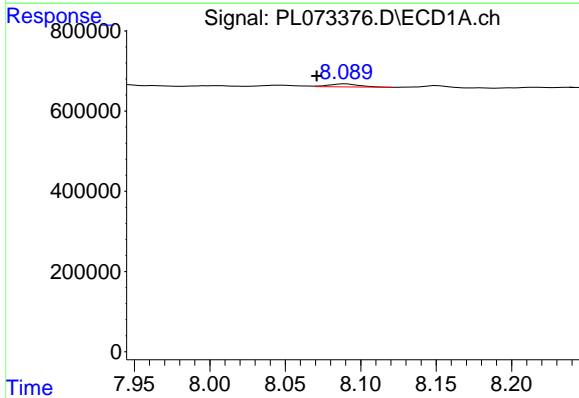


#13 Dieldrin
 R.T.: 7.788 min
 Delta R.T.: 0.008 min
 Response: 36164
 Conc: 0.09 ng/ml

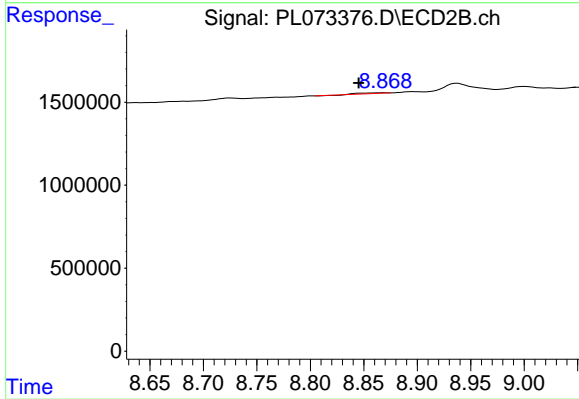
Instrument : ECD_L
 ClientSampleId : VNJ-242



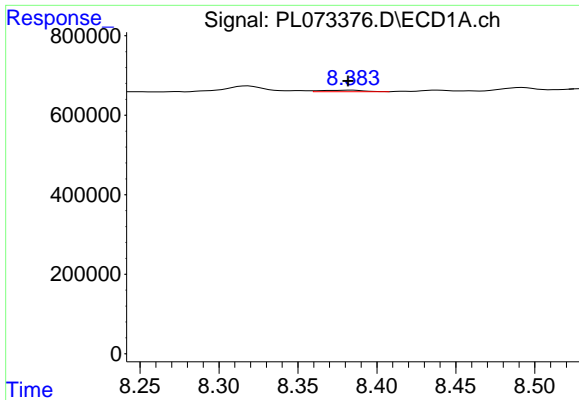
#13 Dieldrin
 R.T.: 0.000 min
 Exp R.T. : 8.611 min
 Response: 0
 Conc: N.D.



#14 Endrin
 R.T.: 8.090 min
 Delta R.T.: 0.019 min
 Response: 99586
 Conc: 0.26 ng/ml



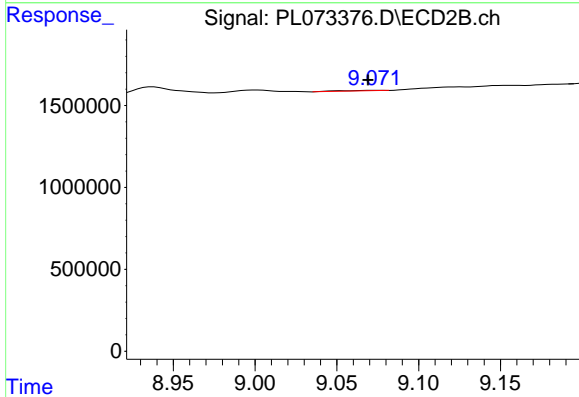
#14 Endrin
 R.T.: 8.869 min
 Delta R.T.: 0.023 min
 Response: 92439
 Conc: 0.06 ng/ml



#15 Endosulfan II

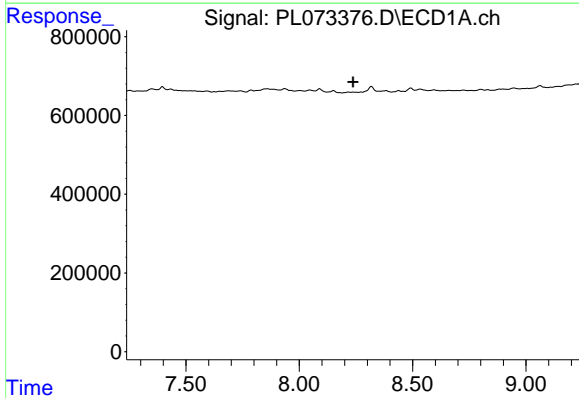
R.T.: 8.384 min
 Delta R.T.: 0.002 min
 Response: 71870
 Conc: 0.18 ng/ml

Instrument :
 ECD_L
 ClientSampleId :
 VNJ-242



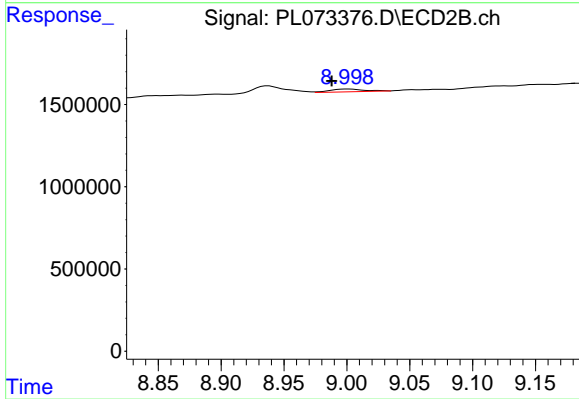
#15 Endosulfan II

R.T.: 9.074 min
 Delta R.T.: 0.005 min
 Response: 55830
 Conc: 0.04 ng/ml



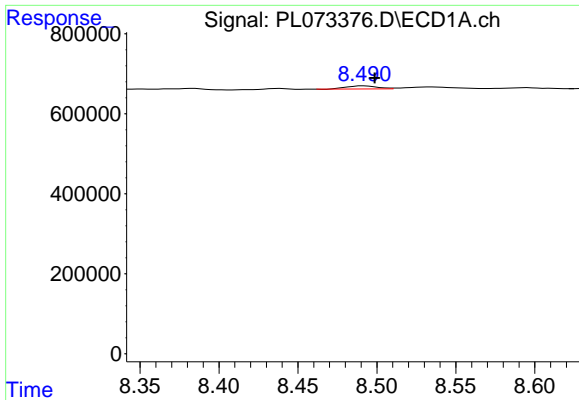
#16 4,4'-DDD

R.T.: 0.000 min
 Exp R.T. : 8.237 min
 Response: 0
 Conc: N.D.



#16 4,4'-DDD

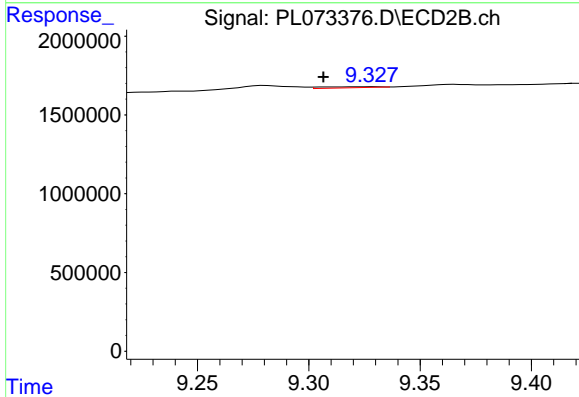
R.T.: 9.001 min
 Delta R.T.: 0.013 min
 Response: 313098
 Conc: 0.21 ng/ml



#17 4,4'-DDT

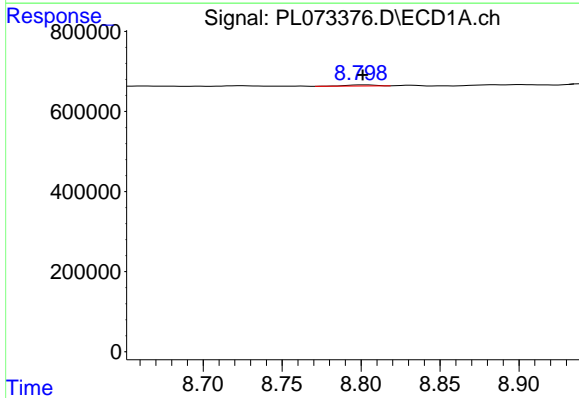
R.T.: 8.492 min
 Delta R.T.: -0.007 min
 Response: 107516
 Conc: 0.28 ng/ml

Instrument : ECD_L
 ClientSampleId : VNJ-242



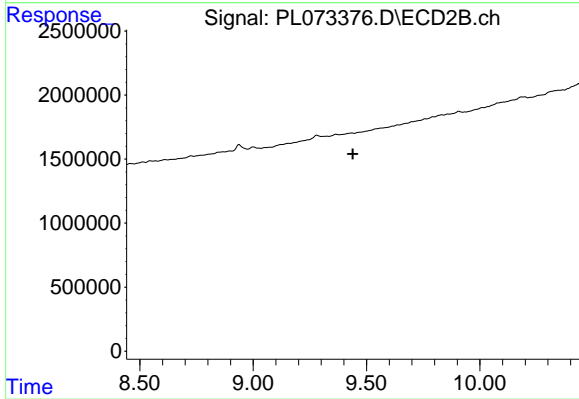
#17 4,4'-DDT

R.T.: 9.328 min
 Delta R.T.: 0.021 min
 Response: 110903
 Conc: 0.07 ng/ml



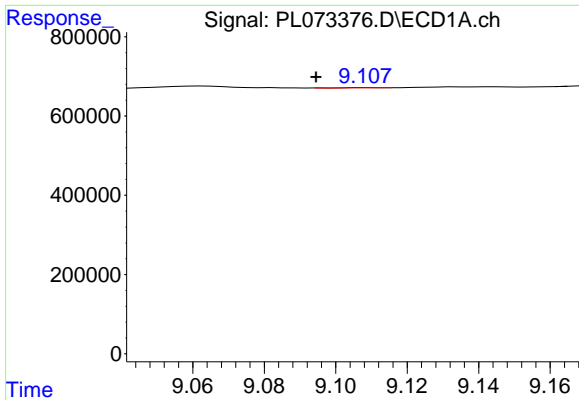
#19 Endosulfan Sulfate

R.T.: 8.802 min
 Delta R.T.: 0.000 min
 Response: 33816
 Conc: 0.08 ng/ml



#19 Endosulfan Sulfate

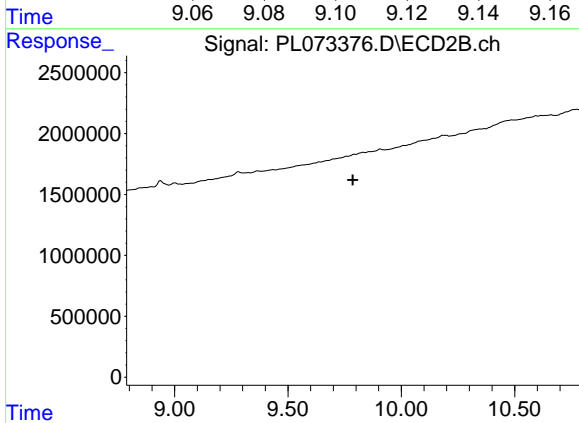
R.T.: 0.000 min
 Exp R.T. : 9.439 min
 Response: 0
 Conc: N.D.



#20 Methoxychlor

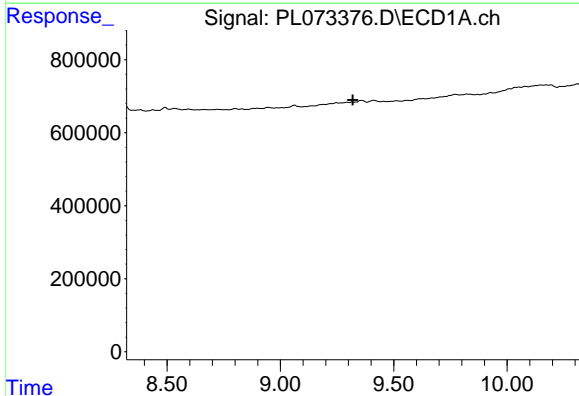
R.T.: 9.109 min
 Delta R.T.: 0.014 min
 Response: 4948
 Conc: 0.02 ng/ml

Instrument :
 ECD_L
 ClientSampleId :
 VNJ-242



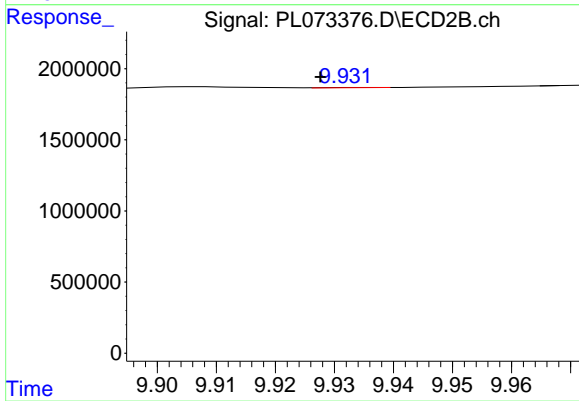
#20 Methoxychlor

R.T.: 0.000 min
 Exp R.T. : 9.786 min
 Response: 0
 Conc: N.D.



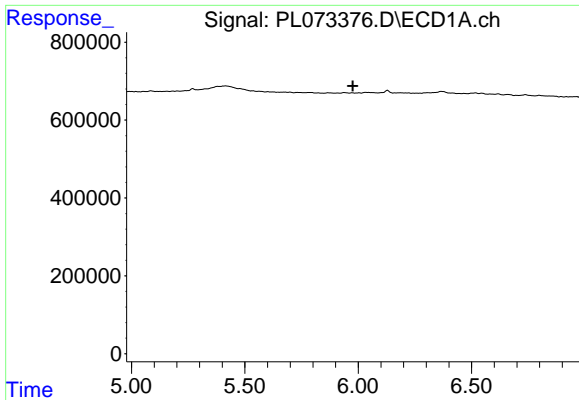
#21 Endrin ketone

R.T.: 0.000 min
 Exp R.T. : 9.320 min
 Response: 0
 Conc: N.D.



#21 Endrin ketone

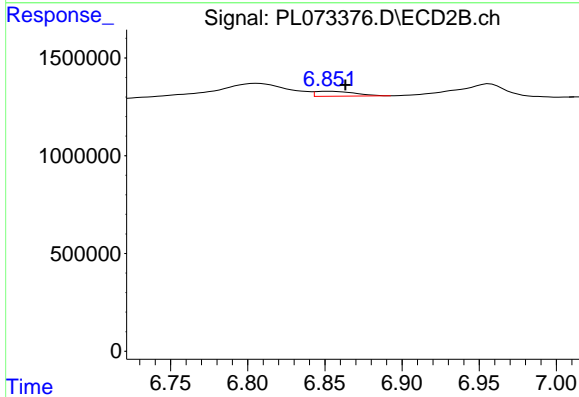
R.T.: 9.935 min
 Delta R.T.: 0.007 min
 Response: 9241
 Conc: 0.01 ng/ml



#23 Chlordane-1

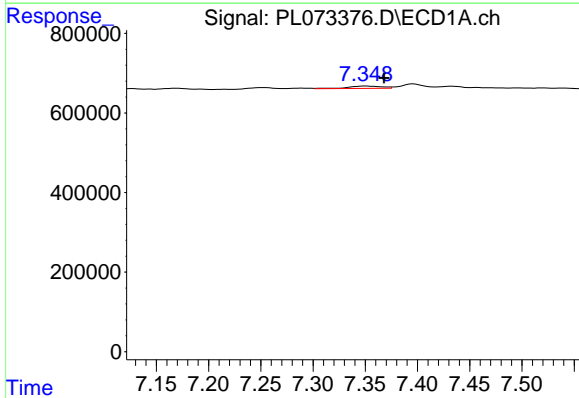
R.T.: 0.000 min
 Exp R.T.: 5.976 min
 Response: 0
 Conc: N.D.

Instrument : ECD_L
 ClientSampleId : VNJ-242



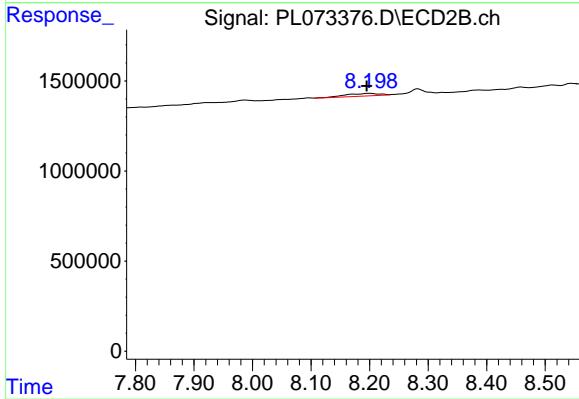
#23 Chlordane-1

R.T.: 6.853 min
 Delta R.T.: -0.010 min
 Response: 458957
 Conc: 6.72 ng/ml



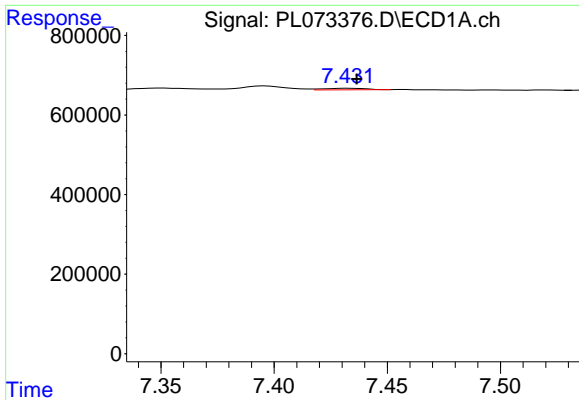
#25 Chlordane-3

R.T.: 7.350 min
 Delta R.T.: -0.018 min
 Response: 135468
 Conc: 3.32 ng/ml



#25 Chlordane-3

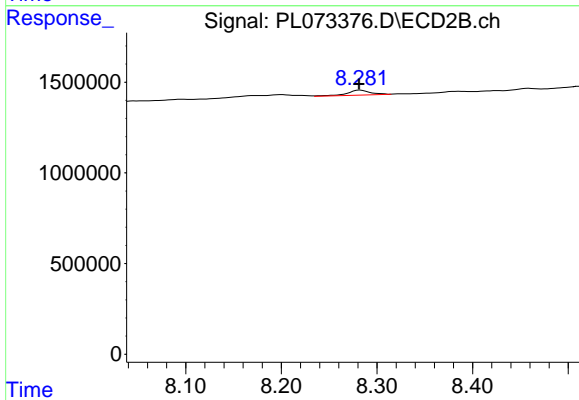
R.T.: 8.200 min
 Delta R.T.: 0.005 min
 Response: 611185
 Conc: 2.25 ng/ml



#26 Chlordane-4

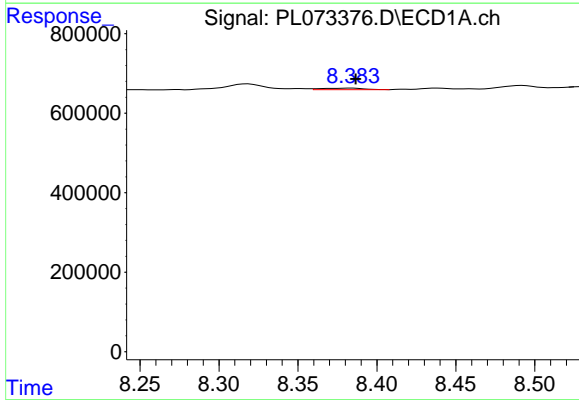
R.T.: 7.433 min
 Delta R.T.: -0.003 min
 Response: 49933
 Conc: 1.13 ng/ml

Instrument :
 ECD_L
 ClientSampleId :
 VNJ-242



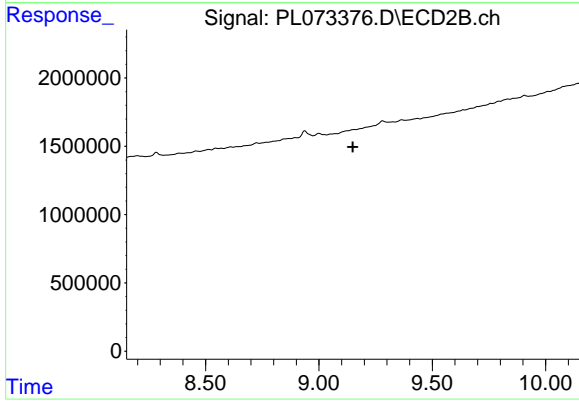
#26 Chlordane-4

R.T.: 8.283 min
 Delta R.T.: 0.001 min
 Response: 451675
 Conc: 1.36 ng/ml



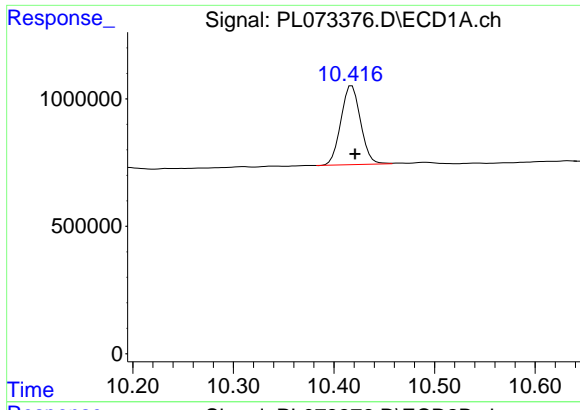
#27 Chlordane-5

R.T.: 8.384 min
 Delta R.T.: -0.002 min
 Response: 71870
 Conc: 4.39 ng/ml



#27 Chlordane-5

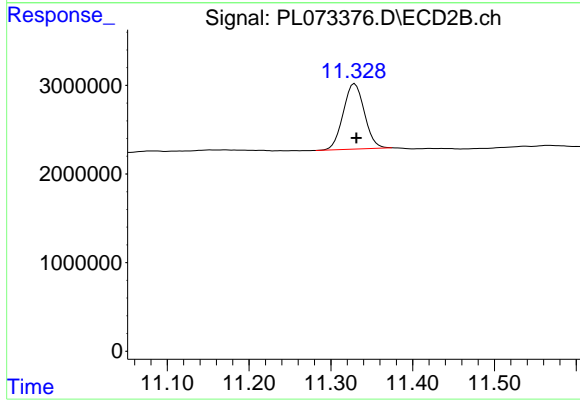
R.T.: 0.000 min
 Exp R.T.: 9.149 min
 Response: 0
 Conc: N.D.



#28 Decachlorobiphenyl

R.T.: 10.418 min
Delta R.T.: -0.003 min
Response: 4191058
Conc: 8.24 ng/ml

Instrument :
ECD_L
ClientSampleId :
VNJ-242



#28 Decachlorobiphenyl

R.T.: 11.329 min
Delta R.T.: -0.002 min
Response: 13280420
Conc: 7.43 ng/ml