

Data Path : Z:\pestpcbsrv\HPCHEM1\ECD\_L\Data\PL031519\  
 Data File : PL046040.D  
 Signal(s) : Signal #1: ECD1A.ch Signal #2: ECD2B.ch  
 Acq On : 16 Mar 2019 05:30  
 Operator : AJ\SJ  
 Sample : PEM  
 Misc :  
 ALS Vial : 3 Sample Multiplier: 1

Instrument :  
 ECD\_L  
 ClientSampleId :  
 PEM

Integration File signal 1: autoint1.e  
 Integration File signal 2: autoint2.e  
 Quant Time: Mar 16 06:33:16 2019  
 Quant Method : Z:\pestpcbsrv\HPCHEM1\ECD\_L\methods\PL022719.M  
 Quant Title : GC Extractables  
 QLast Update : Wed Feb 27 17:00:03 2019  
 Response via : Initial Calibration  
 Integrator: ChemStation

Volume Inj. : 1 µl  
 Signal #1 Phase : ZB-MR2 Signal #2 Phase: ZB-MR1  
 Signal #1 Info : 30M x 0.32mm x0.2 Signal #2 Info : 30M x 0.32mm x0.5µm

	Compound	RT#1	RT#2	Resp#1	Resp#2	ng/ml	ng/ml
-----							
System Monitoring Compounds							
1)	SA Tetrachlo...	3.362	3.981	141.1E6	43553769	20.505	20.338
28)	SA Decachlor...	8.044	9.040	168.1E6	47694876	20.088	20.874
Target Compounds							
2)	A alpha-BHC	3.791	4.371	98088526	26944932	8.831	8.867
3)	MA gamma-BHC...	4.069	4.656	92613494	26715661	9.163	9.458
6)	B beta-BHC	4.322	4.828	44257612	12936506	10.326	10.187
14)	MA Endrin	5.860	6.684	401.9E6	99662511	44.628	43.802
16)	A 4,4'-DDD	5.992	6.807	34247829	9780857	4.678	5.086
17)	MA 4,4'-DDT	6.228	7.106	753.7E6	189.9E6	100.496	96.217
18)	B Endrin al...	6.301	7.018	14084684	3332008	1.927	1.630
20)	A Methoxychlor	6.773	7.564	962.5E6	257.8E6	219.158	210.024
21)	B Endrin ke...	6.996	7.710	36251806	8426337	3.935	3.543
-----							

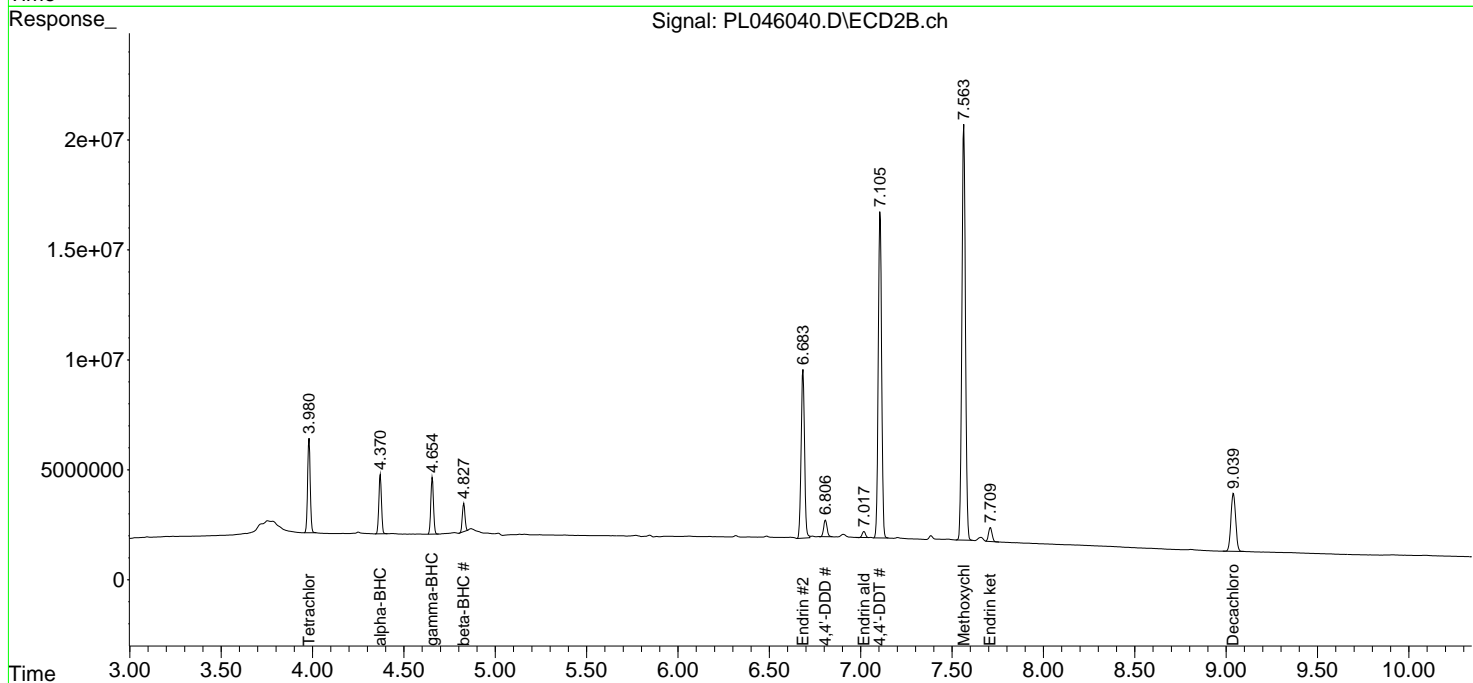
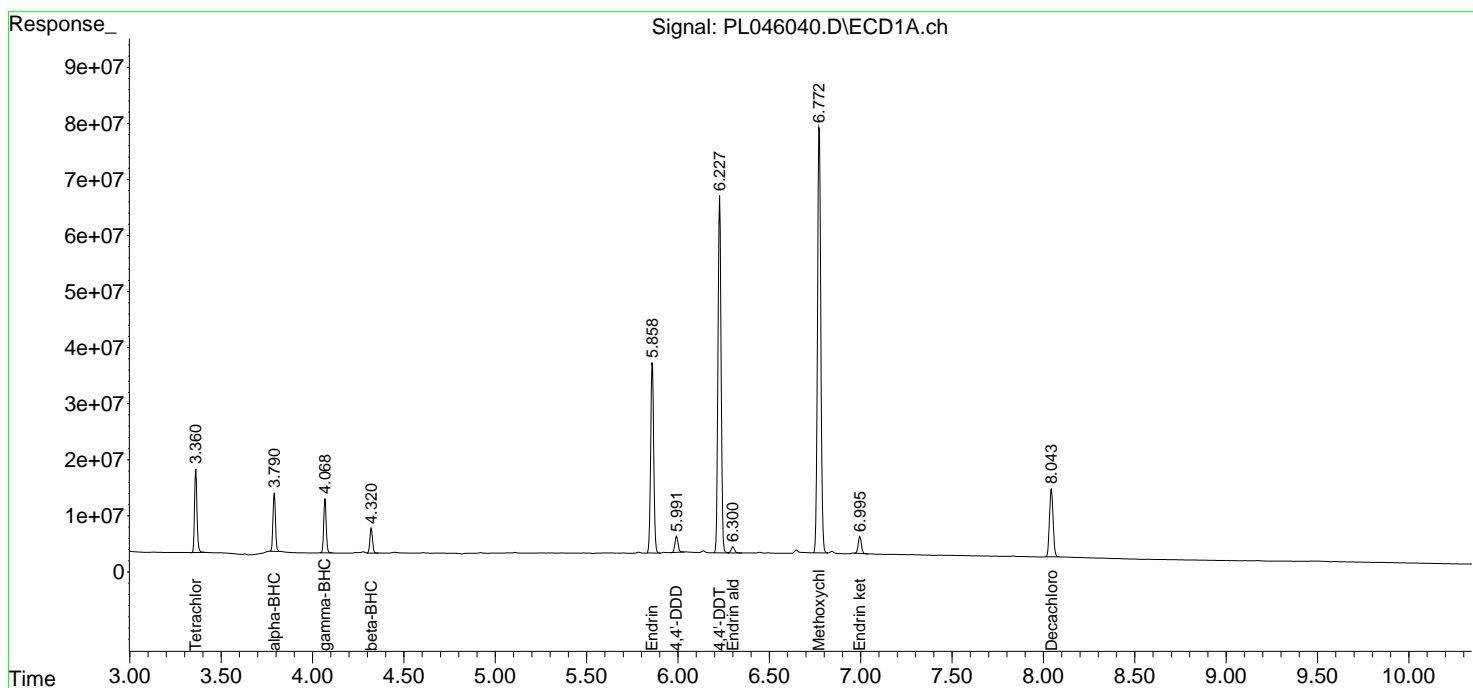
(f)=RT Delta > 1/2 Window (#)=Amounts differ by > 25% (m)=manual int.

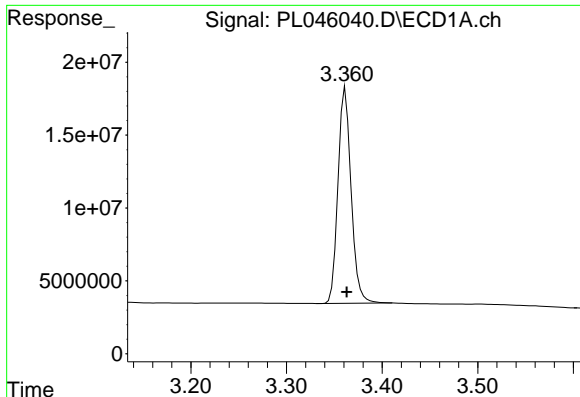
Data Path : Z:\pestpcbsrv\HPCHEM1\ECD\_L\Data\PL031519\  
 Data File : PL046040.D  
 Signal(s) : Signal #1: ECD1A.ch Signal #2: ECD2B.ch  
 Acq On : 16 Mar 2019 05:30  
 Operator : AJ\SJ  
 Sample : PEM  
 Misc :  
 ALS Vial : 3 Sample Multiplier: 1

Instrument :  
 ECD\_L  
 ClientSampled :  
 PEM

Integration File signal 1: autoint1.e  
 Integration File signal 2: autoint2.e  
 Quant Time: Mar 16 06:33:16 2019  
 Quant Method : Z:\pestpcbsrv\HPCHEM1\ECD\_L\methods\PL022719.M  
 Quant Title : GC Extractables  
 QLast Update : Wed Feb 27 17:00:03 2019  
 Response via : Initial Calibration  
 Integrator: ChemStation

Volume Inj. : 1 µl  
 Signal #1 Phase : ZB-MR2 Signal #2 Phase: ZB-MR1  
 Signal #1 Info : 30M x 0.32mm x0.2 Signal #2 Info : 30M x 0.32mm x0.5µm

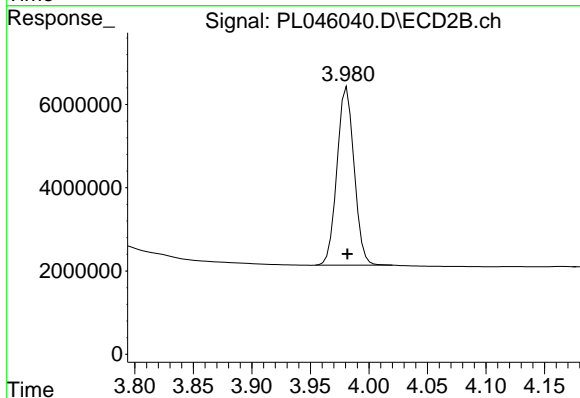




#1 Tetrachloro-m-xylene

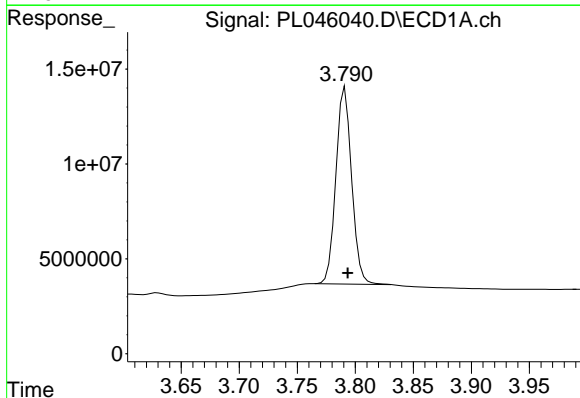
R.T.: 3.362 min  
 Delta R.T.: -0.001 min  
 Response: 141060607  
 Conc: 20.51 ng/ml

Instrument :  
 ECD\_L  
 ClientSampled :  
 PEM



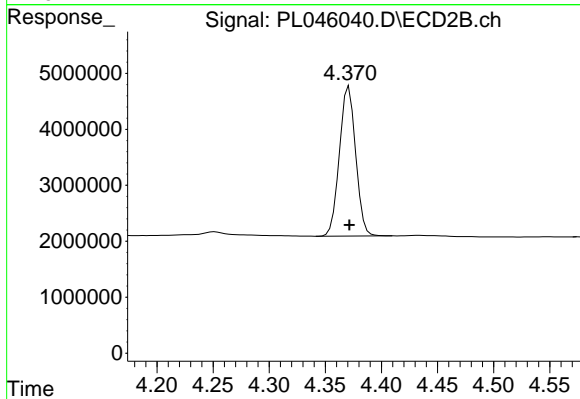
#1 Tetrachloro-m-xylene

R.T.: 3.981 min  
 Delta R.T.: 0.000 min  
 Response: 43553769  
 Conc: 20.34 ng/ml



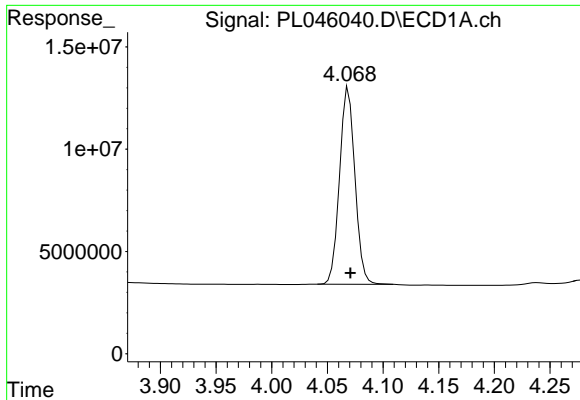
#2 alpha-BHC

R.T.: 3.791 min  
 Delta R.T.: -0.002 min  
 Response: 98088526  
 Conc: 8.83 ng/ml



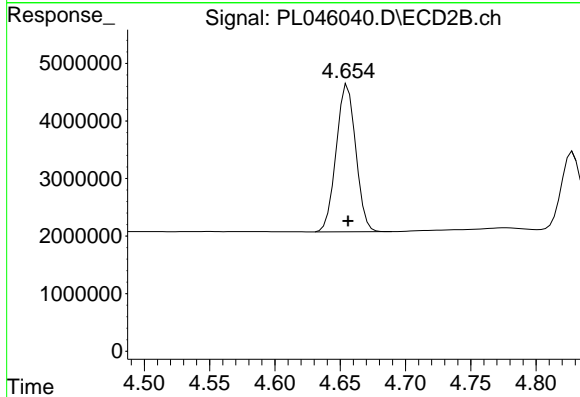
#2 alpha-BHC

R.T.: 4.371 min  
 Delta R.T.: 0.000 min  
 Response: 26944932  
 Conc: 8.87 ng/ml

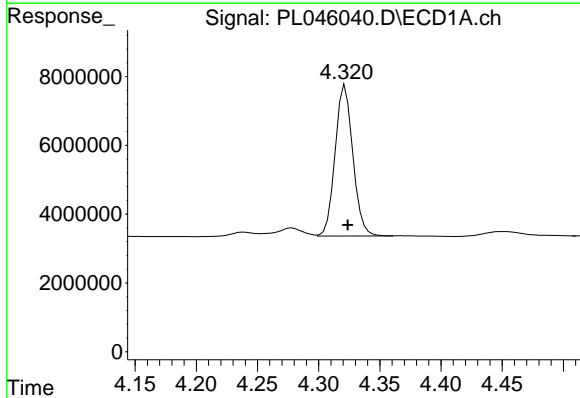


#3 gamma-BHC (Lindane)  
 R.T.: 4.069 min  
 Delta R.T.: -0.002 min  
 Response: 92613494  
 Conc: 9.16 ng/ml

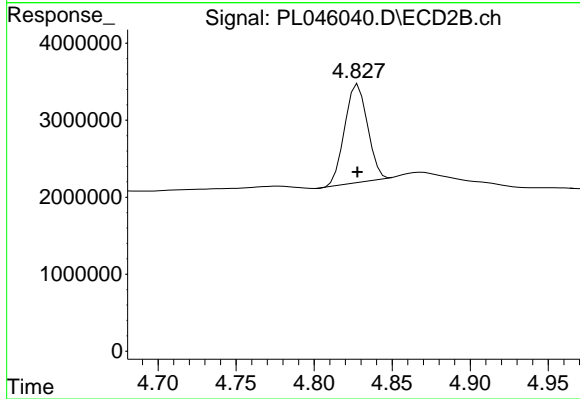
Instrument :  
 ECD\_L  
 ClientSampleId :  
 PEM



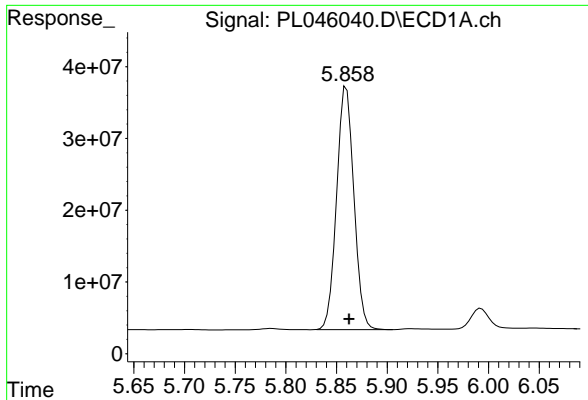
#3 gamma-BHC (Lindane)  
 R.T.: 4.656 min  
 Delta R.T.: 0.000 min  
 Response: 26715661  
 Conc: 9.46 ng/ml



#6 beta-BHC  
 R.T.: 4.322 min  
 Delta R.T.: -0.002 min  
 Response: 44257612  
 Conc: 10.33 ng/ml

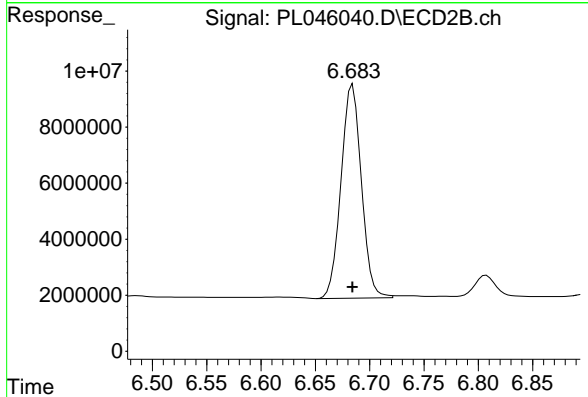


#6 beta-BHC  
 R.T.: 4.828 min  
 Delta R.T.: 0.000 min  
 Response: 12936506  
 Conc: 10.19 ng/ml

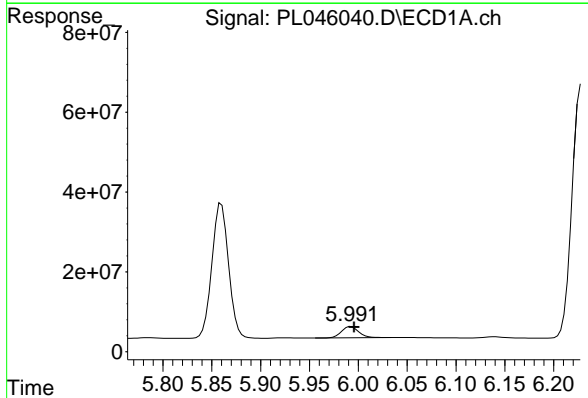


#14 Endrin  
 R.T.: 5.860 min  
 Delta R.T.: -0.003 min  
 Response: 401906464  
 Conc: 44.63 ng/ml

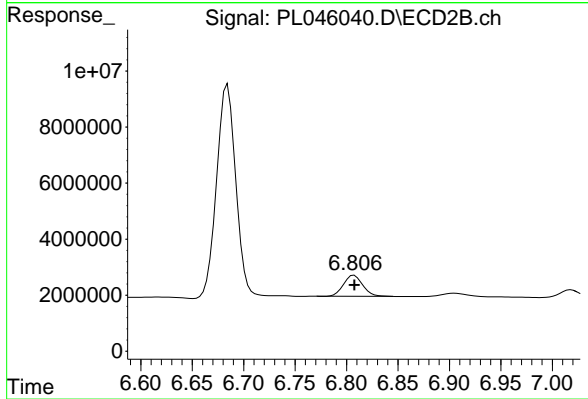
Instrument :  
 ECD\_L  
 ClientSampled :  
 PEM



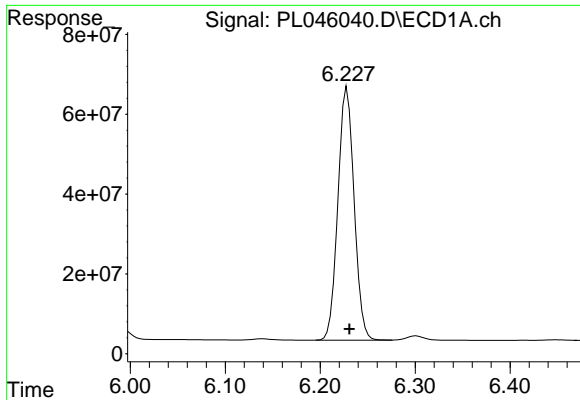
#14 Endrin  
 R.T.: 6.684 min  
 Delta R.T.: 0.000 min  
 Response: 99662511  
 Conc: 43.80 ng/ml



#16 4,4'-DDD  
 R.T.: 5.992 min  
 Delta R.T.: -0.003 min  
 Response: 34247829  
 Conc: 4.68 ng/ml

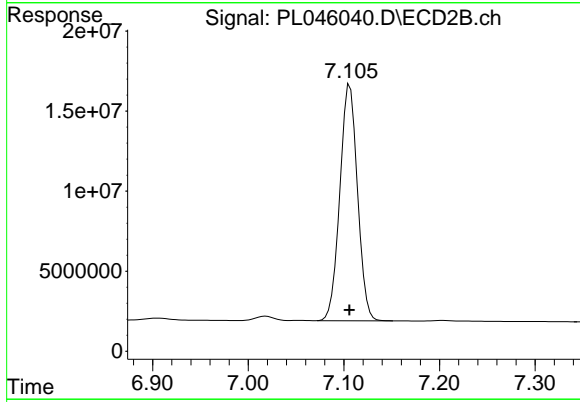


#16 4,4'-DDD  
 R.T.: 6.807 min  
 Delta R.T.: 0.000 min  
 Response: 9780857  
 Conc: 5.09 ng/ml

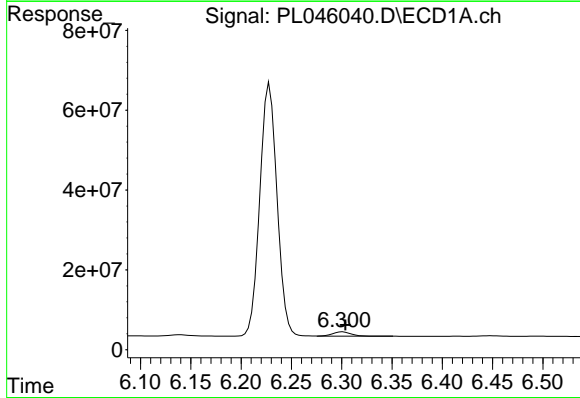


#17 4,4'-DDT  
 R.T.: 6.228 min  
 Delta R.T.: -0.003 min  
 Response: 753733258  
 Conc: 100.50 ng/ml

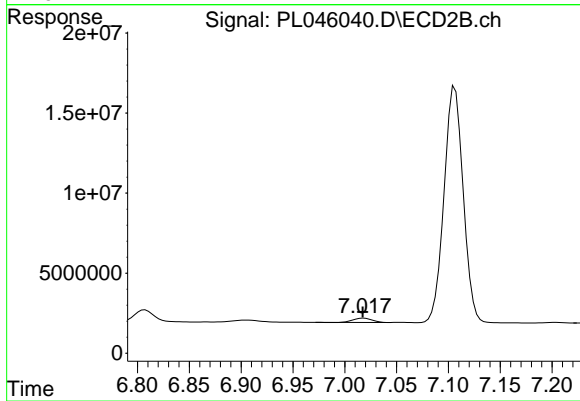
Instrument :  
 ECD\_L  
 ClientSampleId :  
 PEM



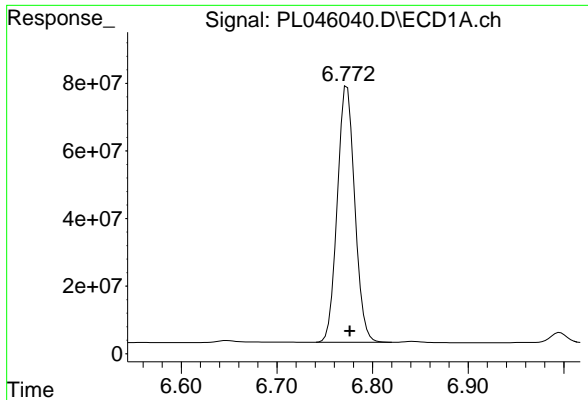
#17 4,4'-DDT  
 R.T.: 7.106 min  
 Delta R.T.: 0.000 min  
 Response: 189879478  
 Conc: 96.22 ng/ml



#18 Endrin aldehyde  
 R.T.: 6.301 min  
 Delta R.T.: -0.003 min  
 Response: 14084684  
 Conc: 1.93 ng/ml



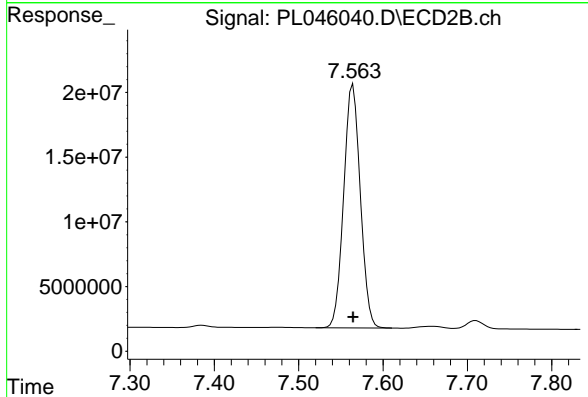
#18 Endrin aldehyde  
 R.T.: 7.018 min  
 Delta R.T.: 0.000 min  
 Response: 3332008  
 Conc: 1.63 ng/ml



#20 Methoxychlor

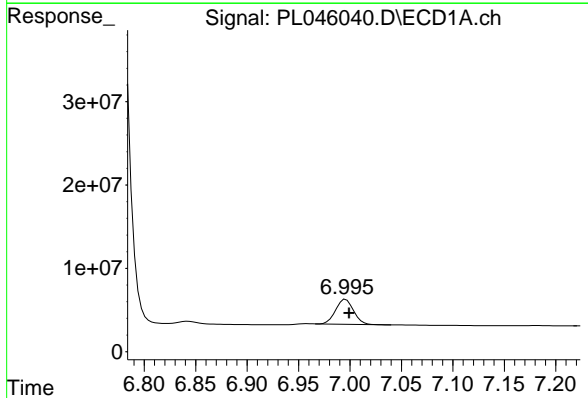
R.T.: 6.773 min  
 Delta R.T.: -0.003 min  
 Response: 962481243  
 Conc: 219.16 ng/ml

Instrument :  
 ECD\_L  
 ClientSampleId :  
 PEM



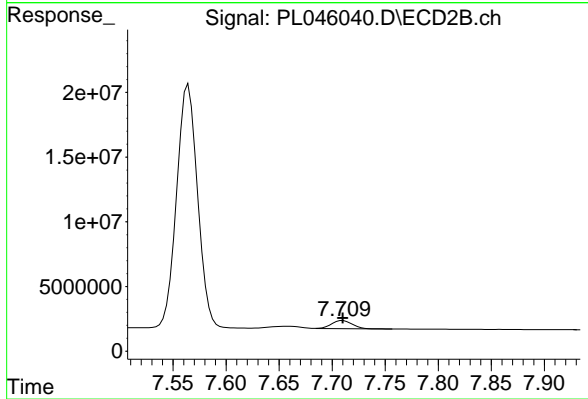
#20 Methoxychlor

R.T.: 7.564 min  
 Delta R.T.: 0.000 min  
 Response: 257786720  
 Conc: 210.02 ng/ml



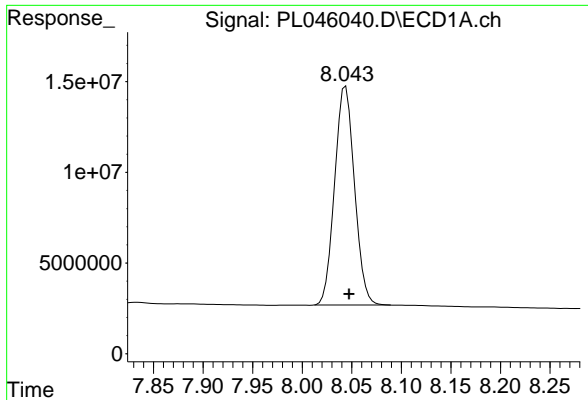
#21 Endrin ketone

R.T.: 6.996 min  
 Delta R.T.: -0.003 min  
 Response: 36251806  
 Conc: 3.93 ng/ml



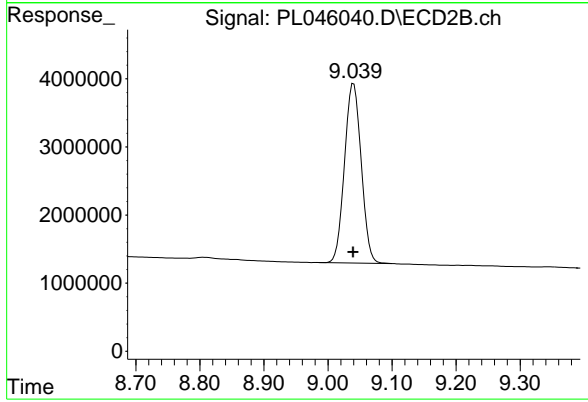
#21 Endrin ketone

R.T.: 7.710 min  
 Delta R.T.: 0.000 min  
 Response: 8426337  
 Conc: 3.54 ng/ml



#28 Decachlorobiphenyl  
R.T.: 8.044 min  
Delta R.T.: -0.003 min  
Response: 168089265  
Conc: 20.09 ng/ml

Instrument :  
ECD\_L  
ClientSampled :  
PEM



#28 Decachlorobiphenyl  
R.T.: 9.040 min  
Delta R.T.: 0.001 min  
Response: 47694876  
Conc: 20.87 ng/ml