

Data Path : Z:\pestpcbsrv\HPCHEM1\ECD_L\Data\PL031620\
 Data File : PL057390.D
 Signal(s) : Signal #1: ECD1A.ch Signal #2: ECD2B.ch
 Acq On : 16 Mar 2020 14:21
 Operator : AJ\MA
 Sample : PB127558BS
 Misc :
 ALS Vial : 8 Sample Multiplier: 1

Instrument :
 ECD_L
 ClientSampled :

Integration File signal 1: autoint1.e
 Integration File signal 2: autoint2.e
 Quant Time: Mar 17 01:36:17 2020
 Quant Method : Z:\pestpcbsrv\HPCHEM1\ECD_L\methods\PL031420.M
 Quant Title : GC Extractables
 QLast Update : Mon Mar 16 09:40:37 2020
 Response via : Initial Calibration
 Integrator: ChemStation

Volume Inj. : 1 µl
 Signal #1 Phase : ZB-MR2 Signal #2 Phase: ZB-MR1
 Signal #1 Info : 30M x 0.32mm x0.2 Signal #2 Info : 30M x 0.32mm x0.5µm

	Compound	RT#1	RT#2	Resp#1	Resp#2	ng/ml	ng/ml

System Monitoring Compounds							
1)	SA Tetrachlo...	3.462	3.956	209.2E6	47986558	22.569	22.118
28)	SA Decachlor...	8.207	8.976	187.2E6	44052337	17.693	19.867
Target Compounds							
2)	A alpha-BHC	3.899	4.343	846.3E6	162.0E6	53.130	50.437
3)	MA gamma-BHC...	4.182	4.625	767.6E6	155.6E6	53.405	49.603
4)	MA Heptachlor	4.483	5.127	798.5E6	156.5E6	53.764	49.718
5)	MB Aldrin	4.730	5.429	760.2E6	150.9E6	55.107	49.470
6)	B beta-BHC	4.434	4.798	327.3E6	86282815	55.672	59.821
7)	B delta-BHC	4.638	5.012	759.2E6	137.8E6	54.090	52.857
8)	Heptachlo...	5.173	5.814	662.7E6	147.7E6	51.710	54.119
9)	A Endosulfan I	5.512	6.168	587.7E6	140.7E6	49.426	49.456
10)	B gamma-Chl...	5.400	6.047	647.5E6	155.6E6	49.656	50.496
11)	B alpha-Chl...	5.458	6.118	619.6E6	151.7E6	47.949	48.734
12)	B 4,4'-DDE	5.622	6.278	624.6E6	140.2E6	50.148	49.315
13)	MA Dieldrin	5.754	6.423	647.8E6	143.6E6	51.360	48.546
14)	MA Endrin	6.011	6.639	544.8E6	106.3E6	47.656	44.069
15)	B Endosulfa...	6.285	6.850	494.2E6	119.3E6	45.504	45.405
16)	A 4,4'-DDD	6.137	6.766	488.5E6	114.9E6	49.838	50.321
17)	MA 4,4'-DDT	6.377	7.062	420.3E6	93711185	42.143	41.144
18)	B Endrin al...	6.452	6.973	421.6E6	103.4E6	45.647	46.518
19)	B Endosulfa...	6.665	7.196	502.1E6	111.8E6	50.000	45.819
20)	A Methoxychlor	6.922	7.522	209.8E6	49547458	39.096	38.096
21)	B Endrin ke...	7.155	7.663	520.5E6	119.2E6	46.056	46.066
22)	Mirex	7.342	8.113	359.3E6	86613906	44.365	45.359
24)	Chlordane-2	4.834	5.429f	1149427	150.9E6	3.163	1601.417 #
25)	Chlordane-3	5.400	6.047	647.5E6	155.6E6	574.207	410.433 #
26)	Chlordane-4	5.458	6.118	619.6E6	151.7E6	646.345	331.429 #
27)	Chlordane-5	6.285	0.000	494.2E6	0	1358.272	N.D. #

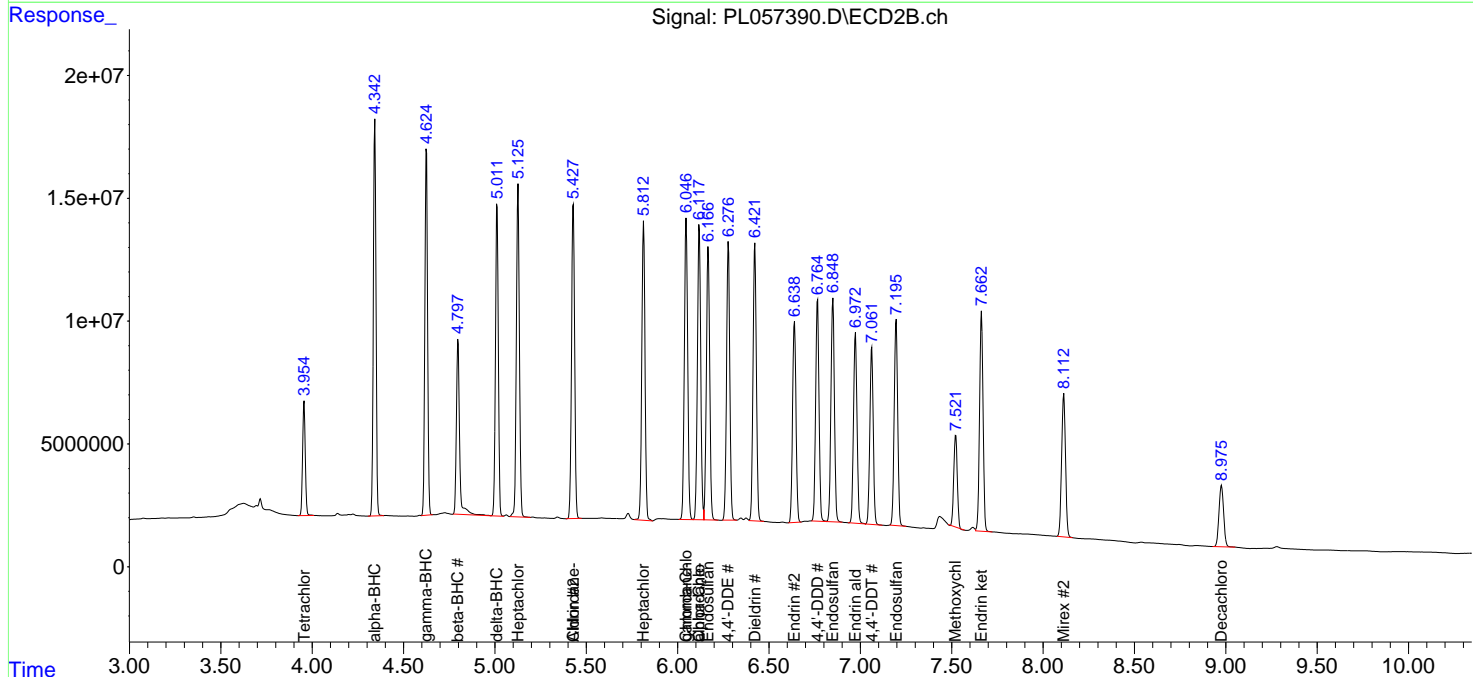
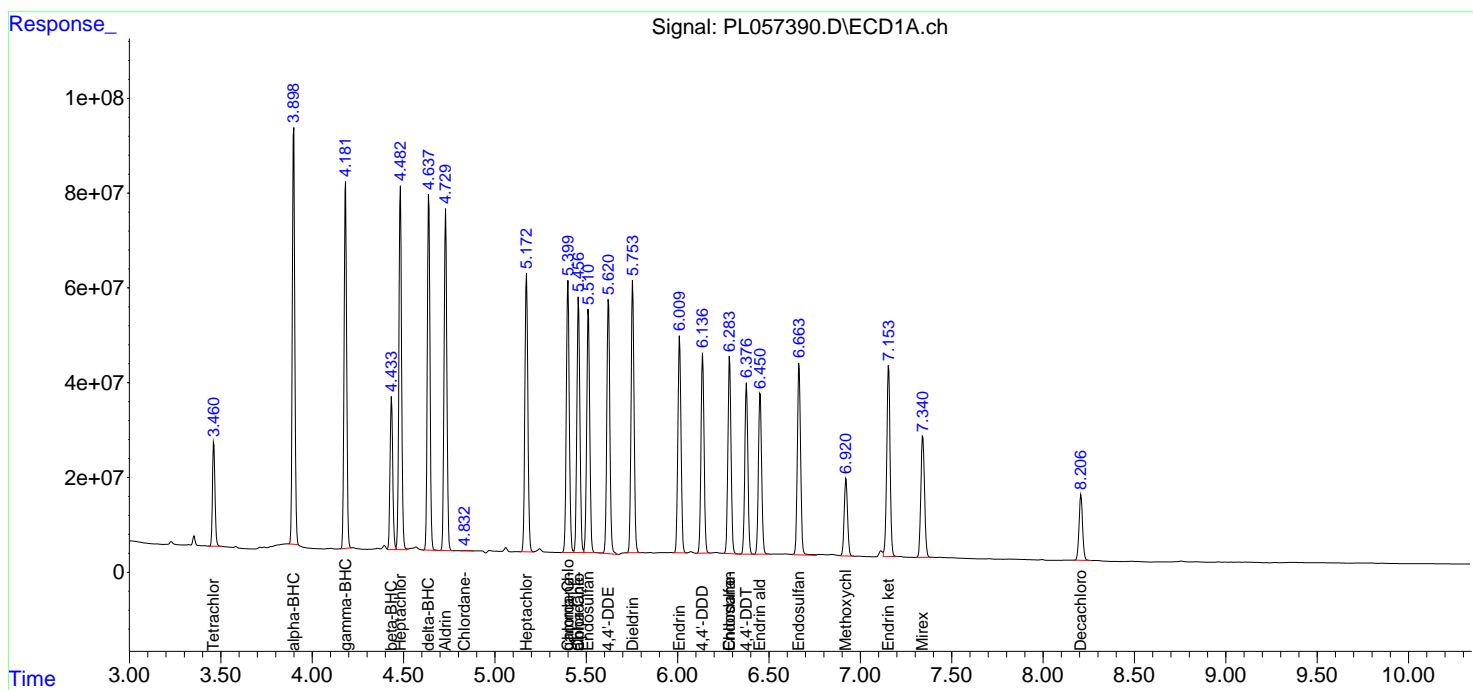
(f)=RT Delta > 1/2 Window (#)=Amounts differ by > 25% (m)=manual int.

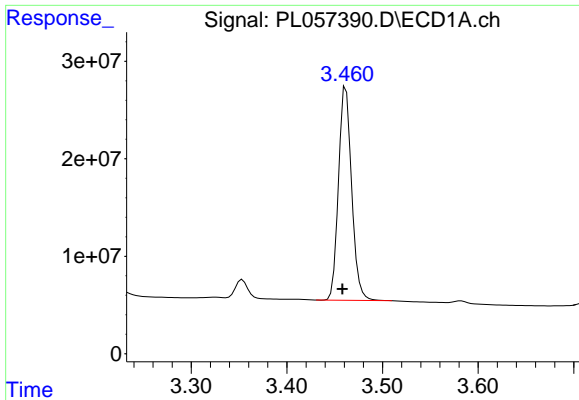
Data Path : Z:\pestpcbsrv\HPCHEM1\ECD_L\Data\PL031620\
 Data File : PL057390.D
 Signal(s) : Signal #1: ECD1A.ch Signal #2: ECD2B.ch
 Acq On : 16 Mar 2020 14:21
 Operator : AJ\MA
 Sample : PB127558BS
 Misc :
 ALS Vial : 8 Sample Multiplier: 1

Instrument :
 ECD_L
 ClientSampled :

Integration File signal 1: autoint1.e
 Integration File signal 2: autoint2.e
 Quant Time: Mar 17 01:36:17 2020
 Quant Method : Z:\pestpcbsrv\HPCHEM1\ECD_L\methods\PL031420.M
 Quant Title : GC Extractables
 QLast Update : Mon Mar 16 09:40:37 2020
 Response via : Initial Calibration
 Integrator: ChemStation

Volume Inj. : 1 µl
 Signal #1 Phase : ZB-MR2 Signal #2 Phase: ZB-MR1
 Signal #1 Info : 30M x 0.32mm x0.2 Signal #2 Info : 30M x 0.32mm x0.5µm

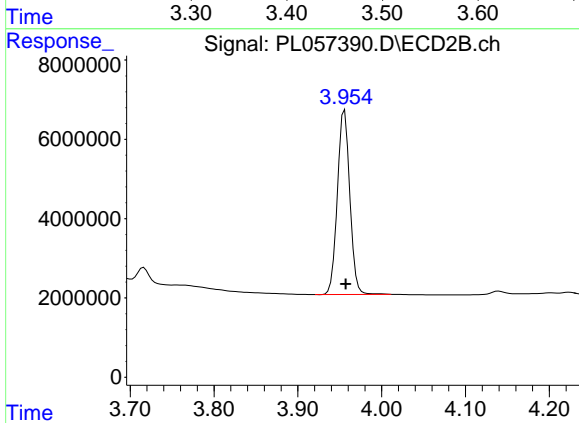




#1 Tetrachloro-m-xylene

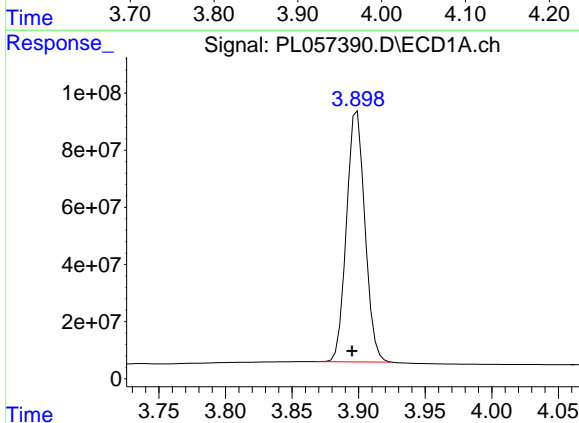
R.T.: 3.462 min
Delta R.T.: 0.004 min
Response: 209201289
Conc: 22.57 ng/ml

Instrument :
ECD_L
ClientSampleId :



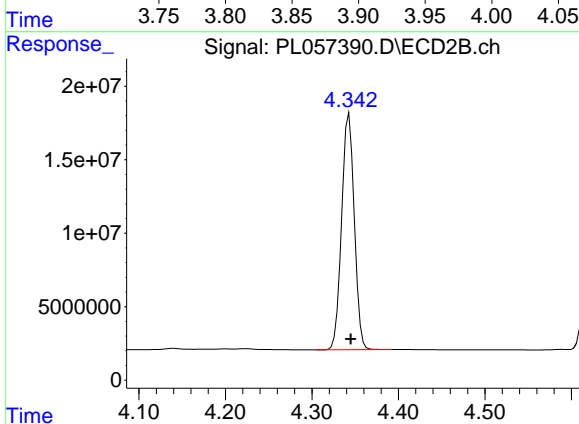
#1 Tetrachloro-m-xylene

R.T.: 3.956 min
Delta R.T.: -0.001 min
Response: 47986558
Conc: 22.12 ng/ml



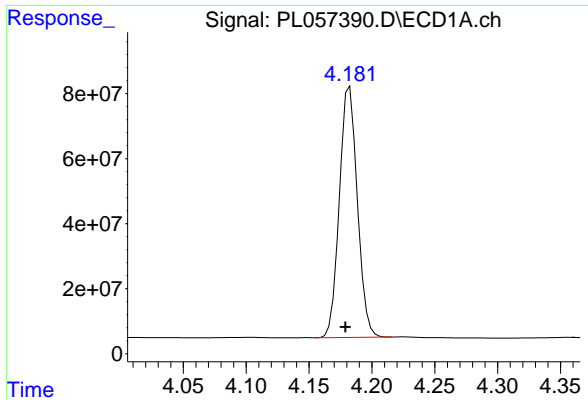
#2 alpha-BHC

R.T.: 3.899 min
Delta R.T.: 0.004 min
Response: 846333583
Conc: 53.13 ng/ml



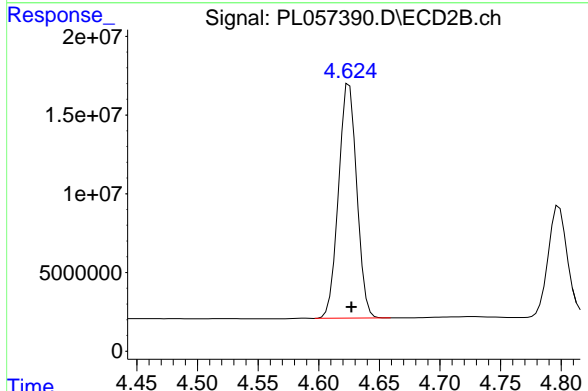
#2 alpha-BHC

R.T.: 4.343 min
Delta R.T.: -0.002 min
Response: 162006649
Conc: 50.44 ng/ml

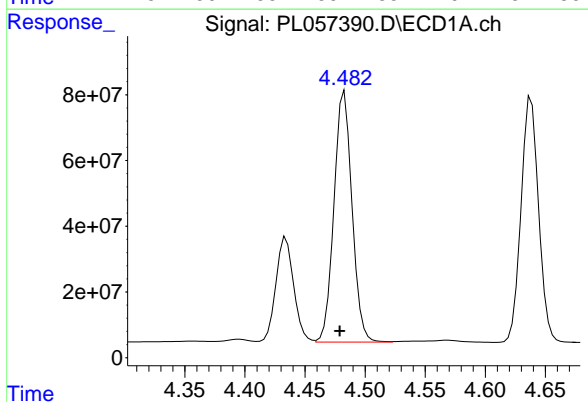


#3 gamma-BHC (Lindane)
 R.T.: 4.182 min
 Delta R.T.: 0.003 min
 Response: 767584329
 Conc: 53.41 ng/ml

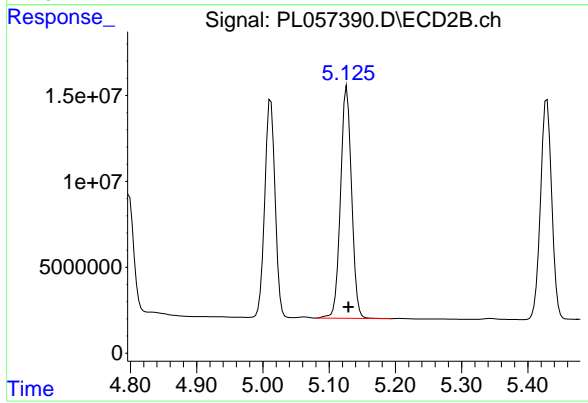
Instrument :
 ECD_L
 ClientSampleId :



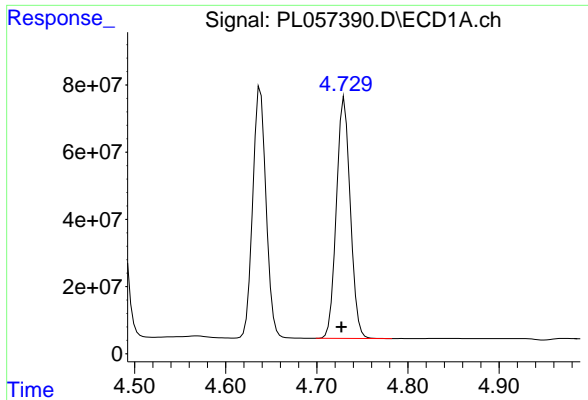
#3 gamma-BHC (Lindane)
 R.T.: 4.625 min
 Delta R.T.: -0.002 min
 Response: 155626555
 Conc: 49.60 ng/ml



#4 Heptachlor
 R.T.: 4.483 min
 Delta R.T.: 0.004 min
 Response: 798522310
 Conc: 53.76 ng/ml

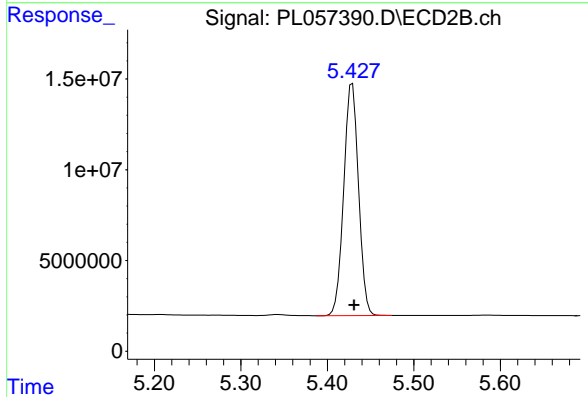


#4 Heptachlor
 R.T.: 5.127 min
 Delta R.T.: -0.002 min
 Response: 156497289
 Conc: 49.72 ng/ml

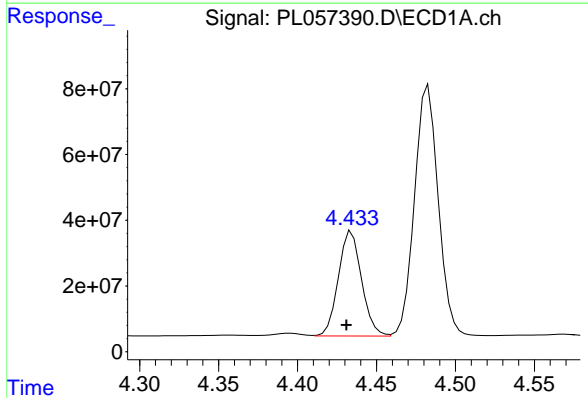


#5 Aldrin
 R.T.: 4.730 min
 Delta R.T.: 0.003 min
 Response: 760167633
 Conc: 55.11 ng/ml

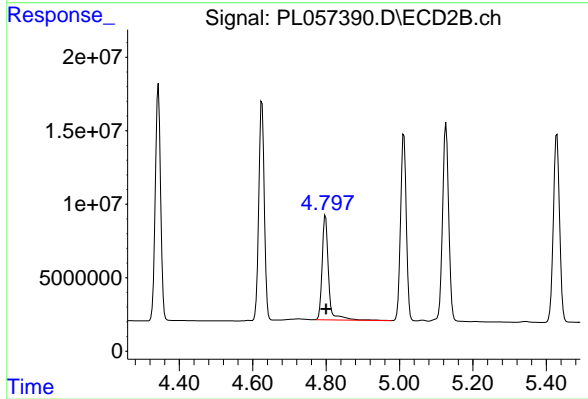
Instrument :
 ECD_L
 ClientSampled :



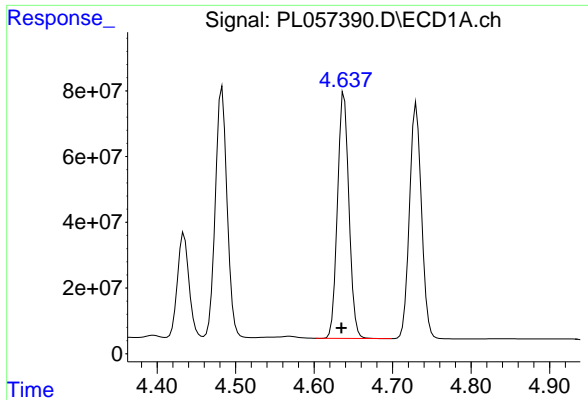
#5 Aldrin
 R.T.: 5.429 min
 Delta R.T.: -0.002 min
 Response: 150919326
 Conc: 49.47 ng/ml



#6 beta-BHC
 R.T.: 4.434 min
 Delta R.T.: 0.003 min
 Response: 327298219
 Conc: 55.67 ng/ml



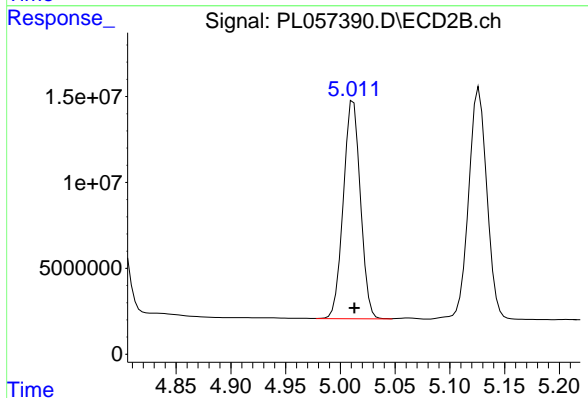
#6 beta-BHC
 R.T.: 4.798 min
 Delta R.T.: -0.002 min
 Response: 86282815
 Conc: 59.82 ng/ml



#7 delta-BHC

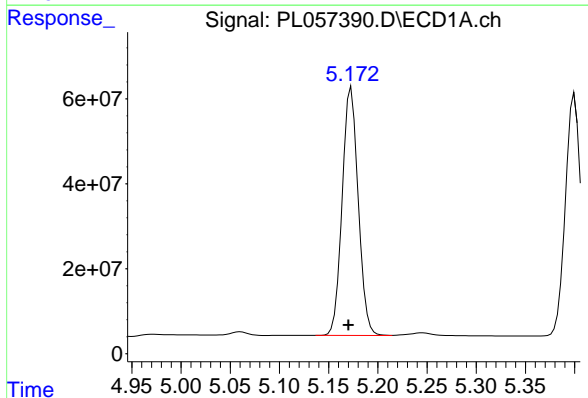
R.T.: 4.638 min
 Delta R.T.: 0.003 min
 Response: 759164818
 Conc: 54.09 ng/ml

Instrument :
 ECD_L
 ClientSampled :



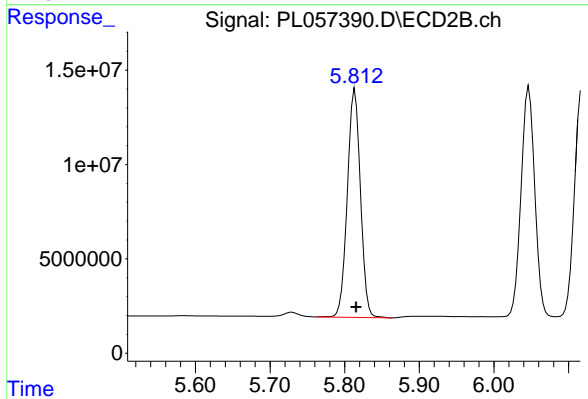
#7 delta-BHC

R.T.: 5.012 min
 Delta R.T.: -0.001 min
 Response: 137811104
 Conc: 52.86 ng/ml



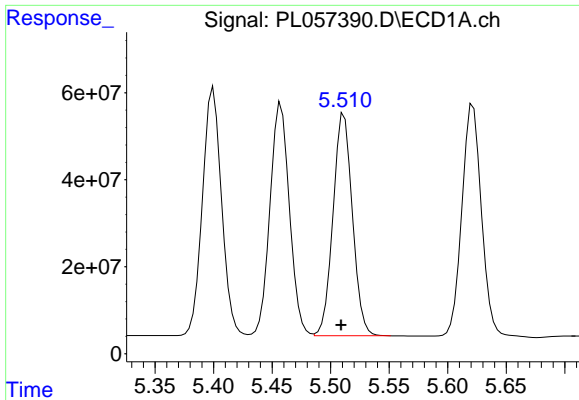
#8 Heptachlor epoxide

R.T.: 5.173 min
 Delta R.T.: 0.003 min
 Response: 662704415
 Conc: 51.71 ng/ml



#8 Heptachlor epoxide

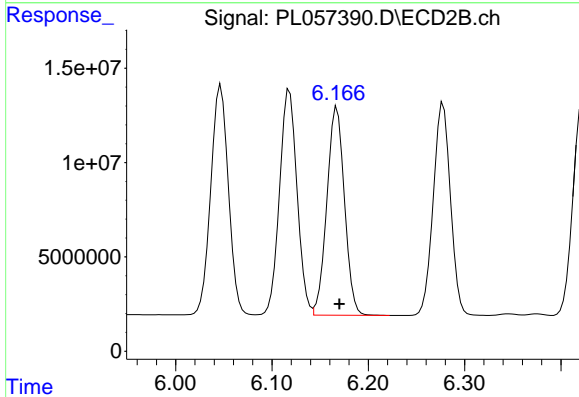
R.T.: 5.814 min
 Delta R.T.: -0.002 min
 Response: 147672200
 Conc: 54.12 ng/ml



#9 Endosulfan I

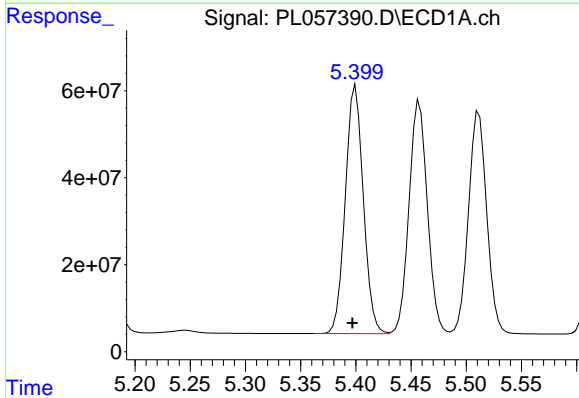
R.T.: 5.512 min
 Delta R.T.: 0.003 min
 Response: 587664169
 Conc: 49.43 ng/ml

Instrument :
 ECD_L
 ClientSampleId :



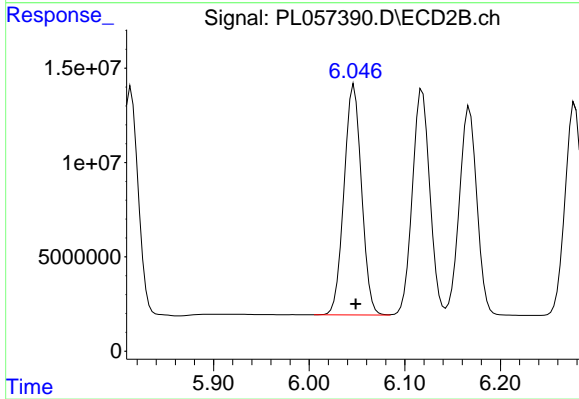
#9 Endosulfan I

R.T.: 6.168 min
 Delta R.T.: -0.002 min
 Response: 140716438
 Conc: 49.46 ng/ml



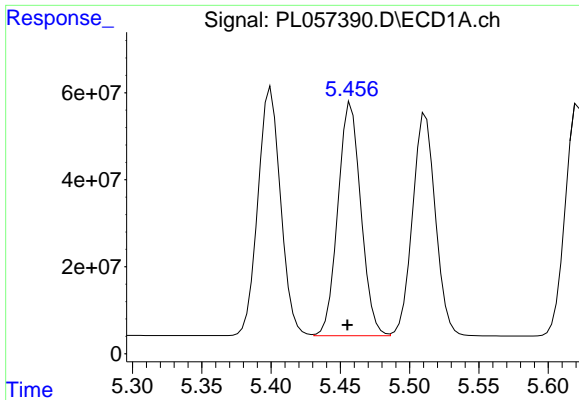
#10 gamma-Chlordane

R.T.: 5.400 min
 Delta R.T.: 0.003 min
 Response: 647521673
 Conc: 49.66 ng/ml



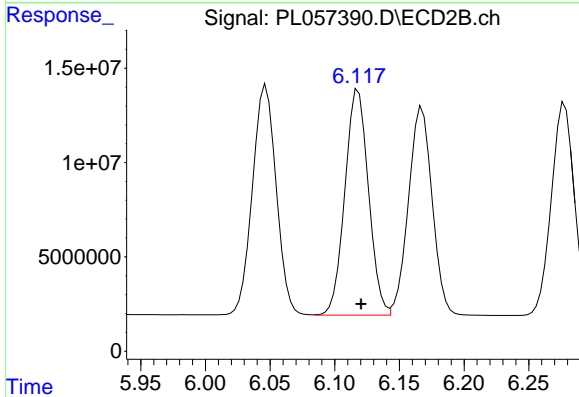
#10 gamma-Chlordane

R.T.: 6.047 min
 Delta R.T.: -0.002 min
 Response: 155635848
 Conc: 50.50 ng/ml

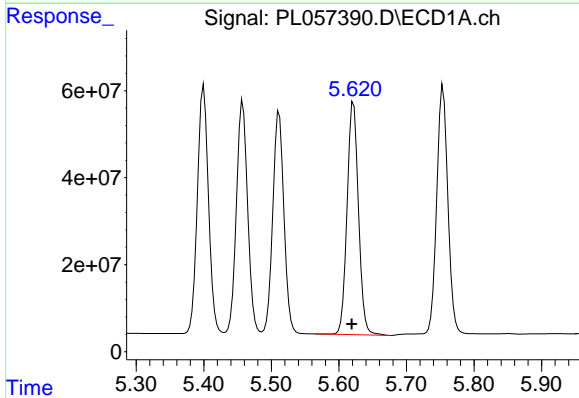


#11 alpha-Chlordane
R.T.: 5.458 min
Delta R.T.: 0.003 min
Response: 619631826
Conc: 47.95 ng/ml

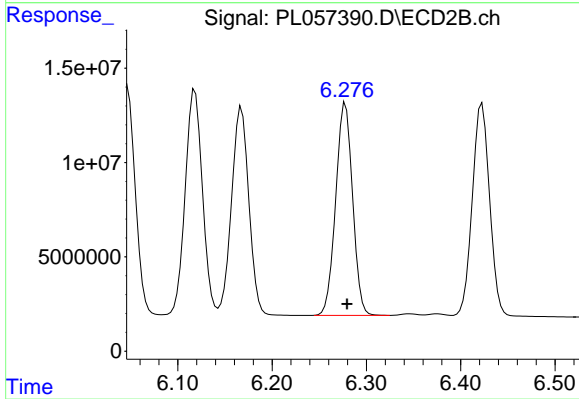
Instrument :
ECD_L
ClientSampleId :



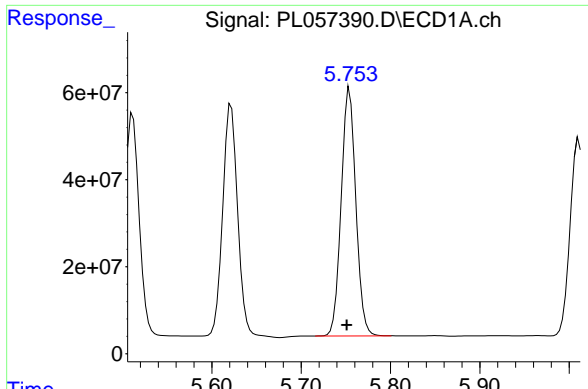
#11 alpha-Chlordane
R.T.: 6.118 min
Delta R.T.: -0.002 min
Response: 151693696
Conc: 48.73 ng/ml



#12 4,4'-DDE
R.T.: 5.622 min
Delta R.T.: 0.003 min
Response: 624627452
Conc: 50.15 ng/ml

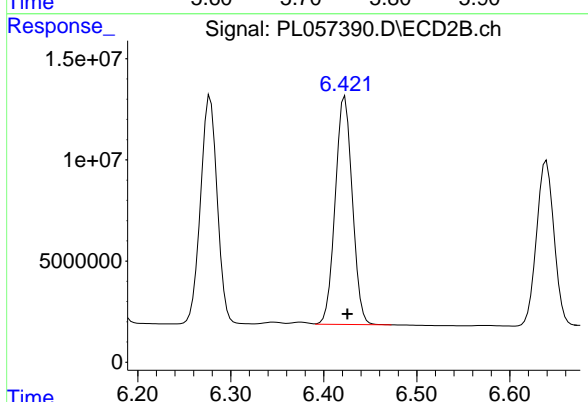


#12 4,4'-DDE
R.T.: 6.278 min
Delta R.T.: -0.002 min
Response: 140175659
Conc: 49.32 ng/ml

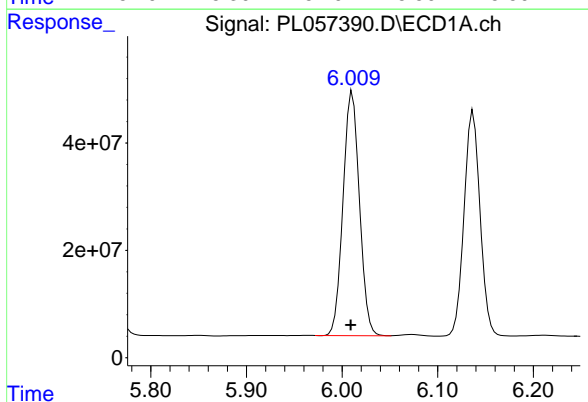


#13 Dieldrin
 R.T.: 5.754 min
 Delta R.T.: 0.003 min
 Response: 647791929
 Conc: 51.36 ng/ml

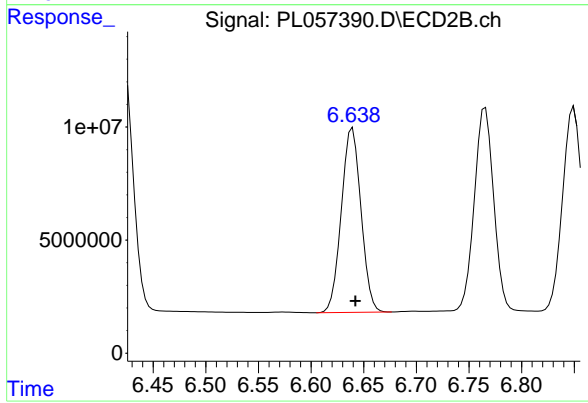
Instrument :
 ECD_L
 ClientSampled :



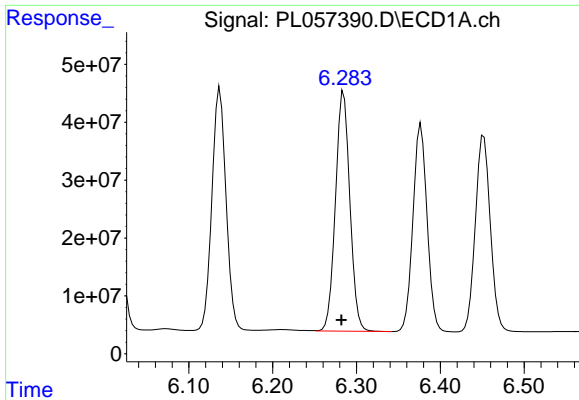
#13 Dieldrin
 R.T.: 6.423 min
 Delta R.T.: -0.003 min
 Response: 143598083
 Conc: 48.55 ng/ml



#14 Endrin
 R.T.: 6.011 min
 Delta R.T.: 0.002 min
 Response: 544778675
 Conc: 47.66 ng/ml



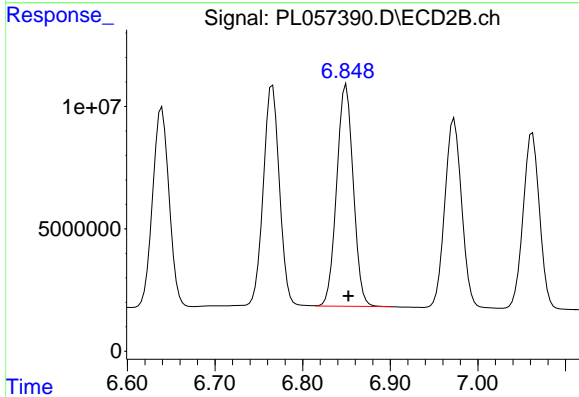
#14 Endrin
 R.T.: 6.639 min
 Delta R.T.: -0.003 min
 Response: 106329718
 Conc: 44.07 ng/ml



#15 Endosulfan II

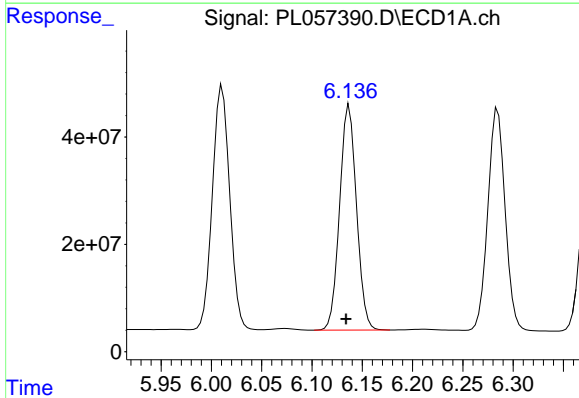
R.T.: 6.285 min
 Delta R.T.: 0.003 min
 Response: 494217939
 Conc: 45.50 ng/ml

Instrument :
 ECD_L
 ClientSampled :



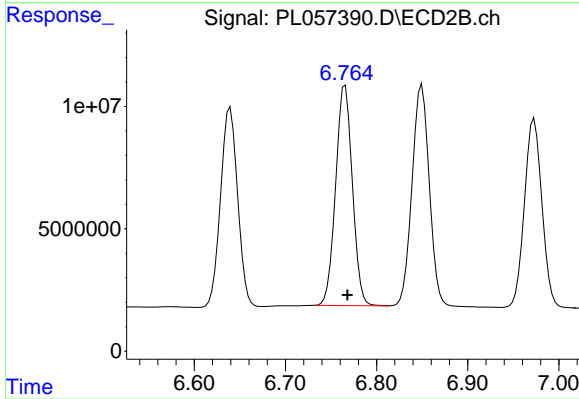
#15 Endosulfan II

R.T.: 6.850 min
 Delta R.T.: -0.003 min
 Response: 119271027
 Conc: 45.40 ng/ml



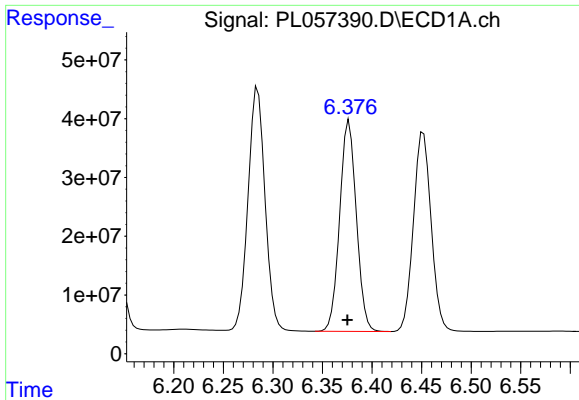
#16 4,4'-DDD

R.T.: 6.137 min
 Delta R.T.: 0.003 min
 Response: 488474311
 Conc: 49.84 ng/ml



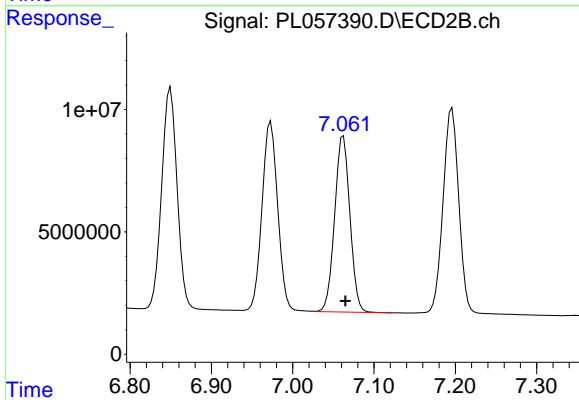
#16 4,4'-DDD

R.T.: 6.766 min
 Delta R.T.: -0.002 min
 Response: 114919814
 Conc: 50.32 ng/ml

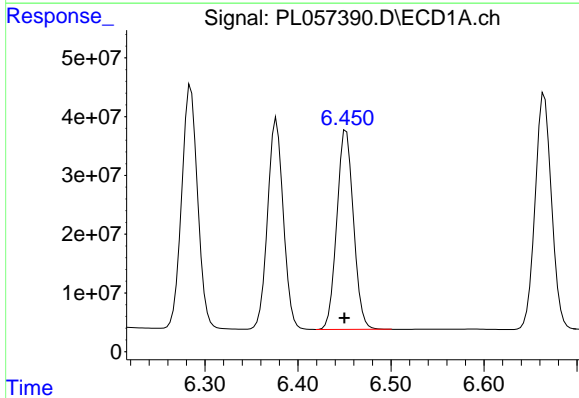


#17 4,4'-DDT
R.T.: 6.377 min
Delta R.T.: 0.002 min
Response: 420281012
Conc: 42.14 ng/ml

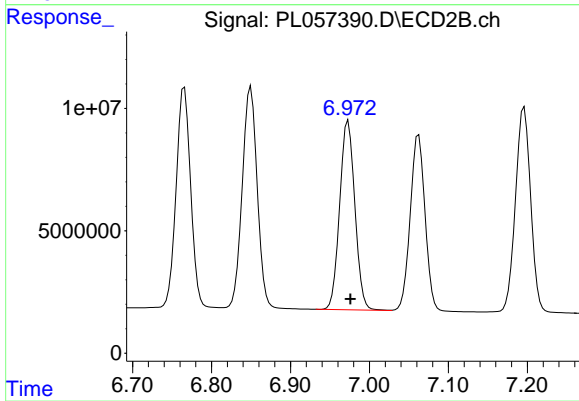
Instrument :
ECD_L
ClientSampleId :



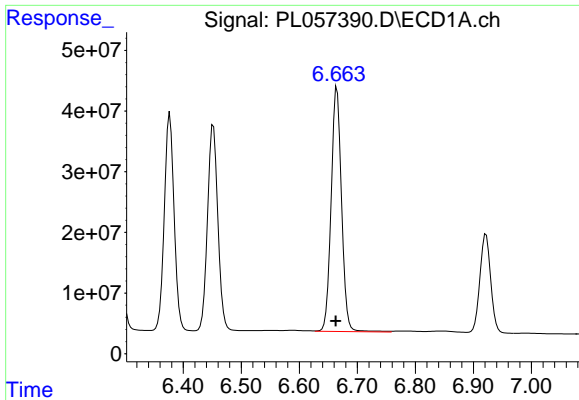
#17 4,4'-DDT
R.T.: 7.062 min
Delta R.T.: -0.002 min
Response: 93711185
Conc: 41.14 ng/ml



#18 Endrin aldehyde
R.T.: 6.452 min
Delta R.T.: 0.002 min
Response: 421561628
Conc: 45.65 ng/ml

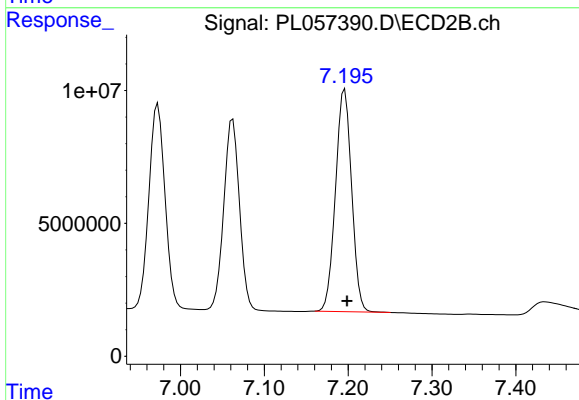


#18 Endrin aldehyde
R.T.: 6.973 min
Delta R.T.: -0.003 min
Response: 103412345
Conc: 46.52 ng/ml

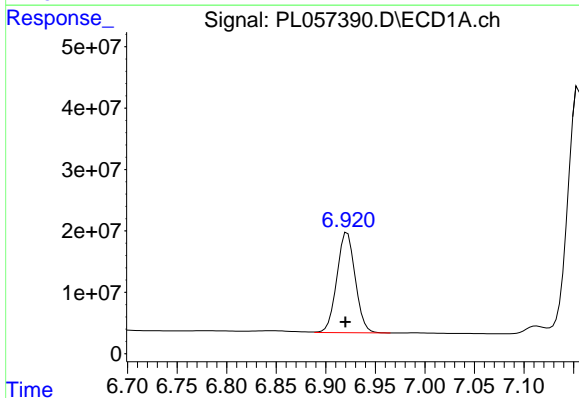


#19 Endosulfan Sulfate
 R.T.: 6.665 min
 Delta R.T.: 0.002 min
 Response: 502127155
 Conc: 50.00 ng/ml

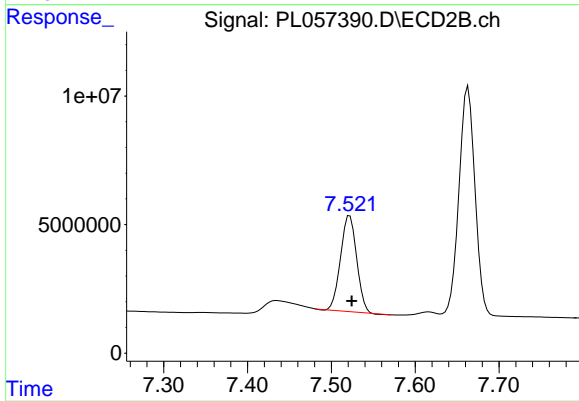
Instrument :
 ECD_L
 ClientSampleId :



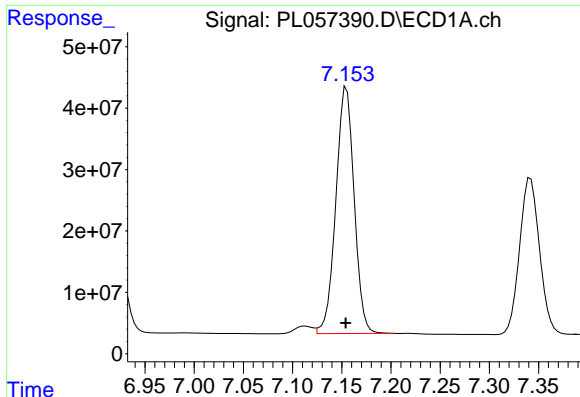
#19 Endosulfan Sulfate
 R.T.: 7.196 min
 Delta R.T.: -0.003 min
 Response: 111754926
 Conc: 45.82 ng/ml



#20 Methoxychlor
 R.T.: 6.922 min
 Delta R.T.: 0.002 min
 Response: 209780556
 Conc: 39.10 ng/ml



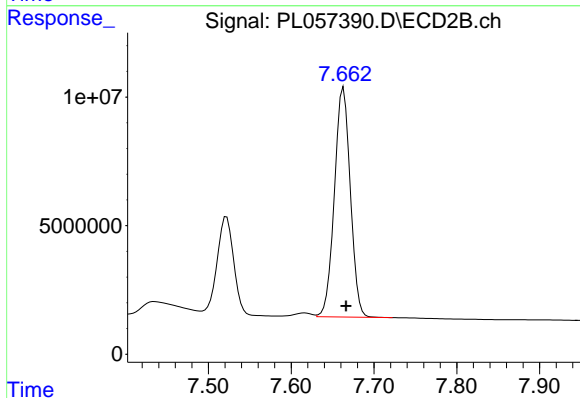
#20 Methoxychlor
 R.T.: 7.522 min
 Delta R.T.: -0.002 min
 Response: 49547458
 Conc: 38.10 ng/ml



#21 Endrin ketone

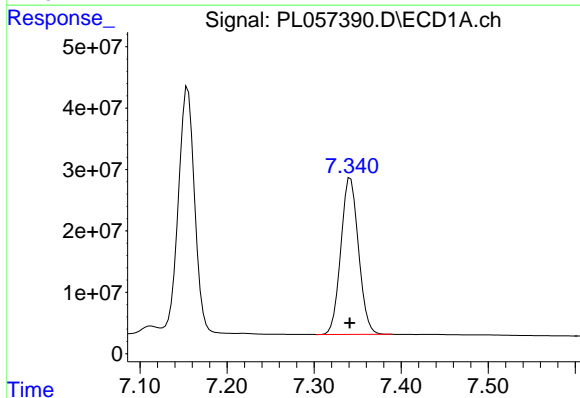
R.T.: 7.155 min
 Delta R.T.: 0.000 min
 Response: 520549836
 Conc: 46.06 ng/ml

Instrument :
 ECD_L
 ClientSampled :



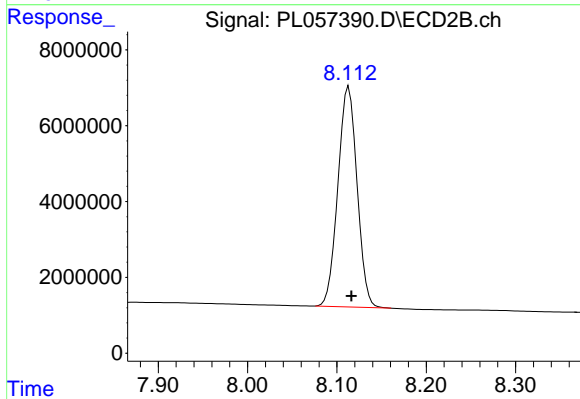
#21 Endrin ketone

R.T.: 7.663 min
 Delta R.T.: -0.003 min
 Response: 119246221
 Conc: 46.07 ng/ml



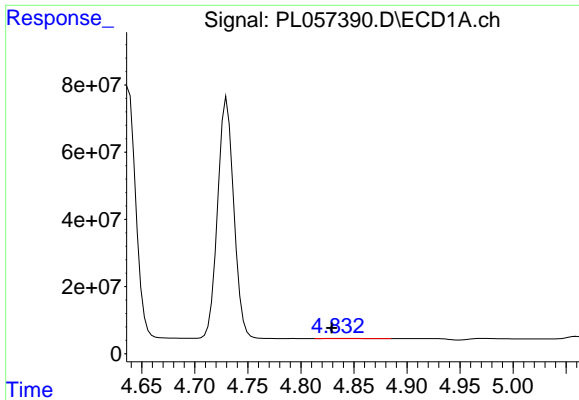
#22 Mirex

R.T.: 7.342 min
 Delta R.T.: 0.000 min
 Response: 359325691
 Conc: 44.37 ng/ml



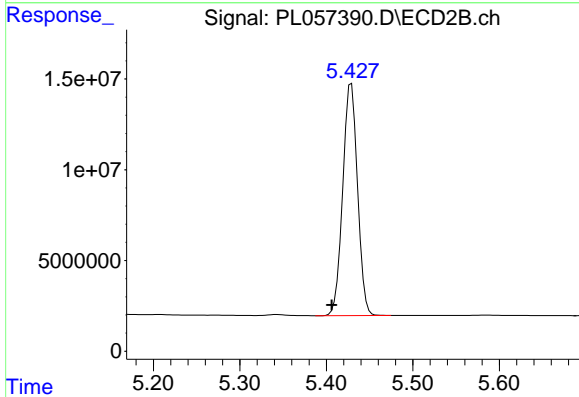
#22 Mirex

R.T.: 8.113 min
 Delta R.T.: -0.003 min
 Response: 86613906
 Conc: 45.36 ng/ml

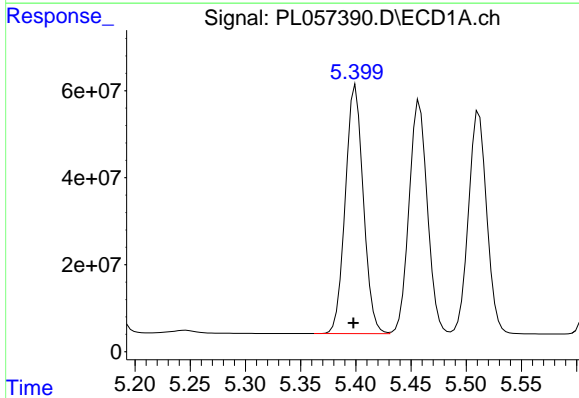


#24 Chlordane-2
 R.T.: 4.834 min
 Delta R.T.: 0.005 min
 Response: 1149427
 Conc: 3.16 ng/ml

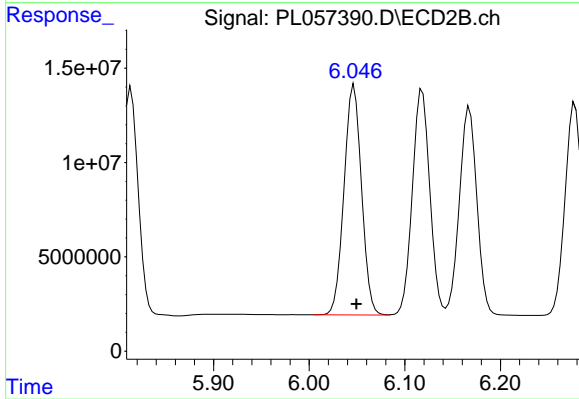
Instrument :
 ECD_L
 ClientSampleId :



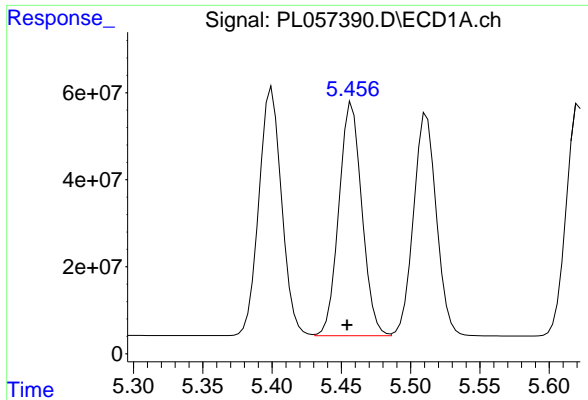
#24 Chlordane-2
 R.T.: 5.429 min
 Delta R.T.: 0.023 min
 Response: 150919326
 Conc: 1601.42 ng/ml



#25 Chlordane-3
 R.T.: 5.400 min
 Delta R.T.: 0.002 min
 Response: 647521673
 Conc: 574.21 ng/ml

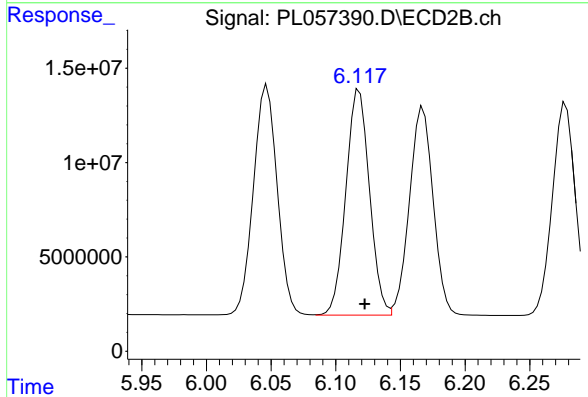


#25 Chlordane-3
 R.T.: 6.047 min
 Delta R.T.: -0.002 min
 Response: 155635848
 Conc: 410.43 ng/ml

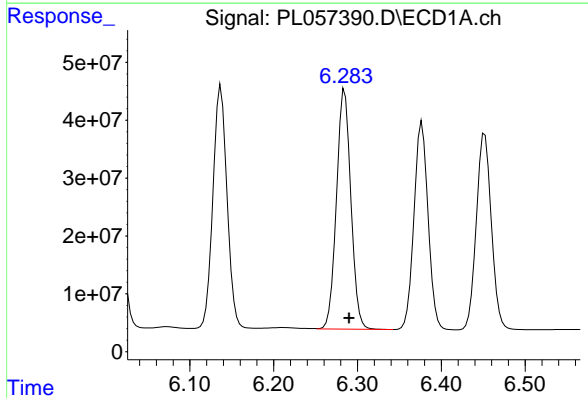


#26 Chlordane-4
 R.T.: 5.458 min
 Delta R.T.: 0.004 min
 Response: 619631826
 Conc: 646.35 ng/ml

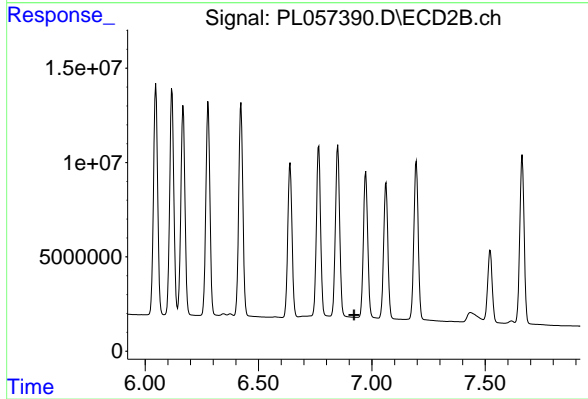
Instrument :
 ECD_L
 ClientSampleId :



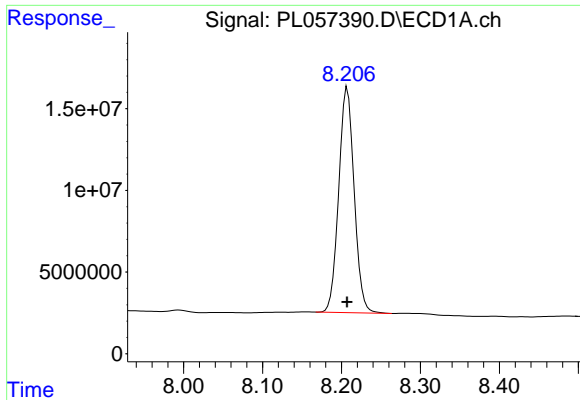
#26 Chlordane-4
 R.T.: 6.118 min
 Delta R.T.: -0.004 min
 Response: 151693696
 Conc: 331.43 ng/ml



#27 Chlordane-5
 R.T.: 6.285 min
 Delta R.T.: -0.005 min
 Response: 494217939
 Conc: 1358.27 ng/ml



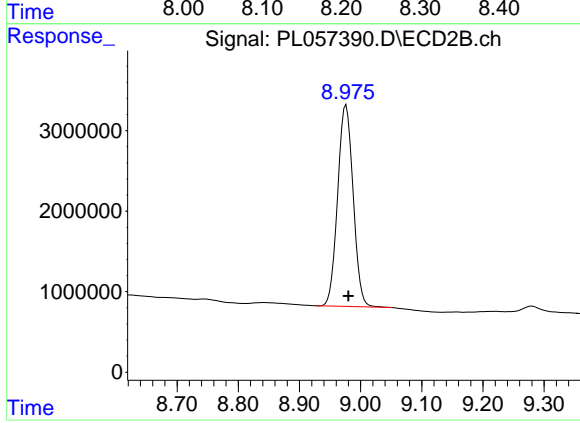
#27 Chlordane-5
 R.T.: 0.000 min
 Exp R.T. : 6.922 min
 Response: 0
 Conc: N.D.



#28 Decachlorobiphenyl

R.T.: 8.207 min
Delta R.T.: 0.000 min
Response: 187211019
Conc: 17.69 ng/ml

Instrument :
ECD_L
ClientSampleId :



#28 Decachlorobiphenyl

R.T.: 8.976 min
Delta R.T.: -0.004 min
Response: 44052337
Conc: 19.87 ng/ml