

Data Path : Z:\pestpcbsrv\HPCHEM1\ECD_L\Data\PL031620\
 Data File : PL057422.D
 Signal(s) : Signal #1: ECD1A.ch Signal #2: ECD2B.ch
 Acq On : 16 Mar 2020 22:11
 Operator : AJ\MA
 Sample : I.BLK
 Misc :
 ALS Vial : 2 Sample Multiplier: 1

Instrument :
 ECD_L
 ClientSampleId :
 I.BLK

Integration File signal 1: autoint1.e
 Integration File signal 2: autoint2.e
 Quant Time: Mar 17 01:43:46 2020
 Quant Method : Z:\pestpcbsrv\HPCHEM1\ECD_L\methods\PL031420.M
 Quant Title : GC Extractables
 QLast Update : Mon Mar 16 09:40:37 2020
 Response via : Initial Calibration
 Integrator: ChemStation

Volume Inj. : 1 µl
 Signal #1 Phase : ZB-MR2 Signal #2 Phase: ZB-MR1
 Signal #1 Info : 30M x 0.32mm x0.2 Signal #2 Info : 30M x 0.32mm x0.5µm

Compound	RT#1	RT#2	Resp#1	Resp#2	ng/ml	ng/ml

System Monitoring Compounds						
1) SA Tetrachlo...	3.458	3.956	200.2E6	47451915	21.603	21.872
28) SA Decachlor...	8.203	8.975	202.0E6	45232747	19.086	20.399

Target Compounds

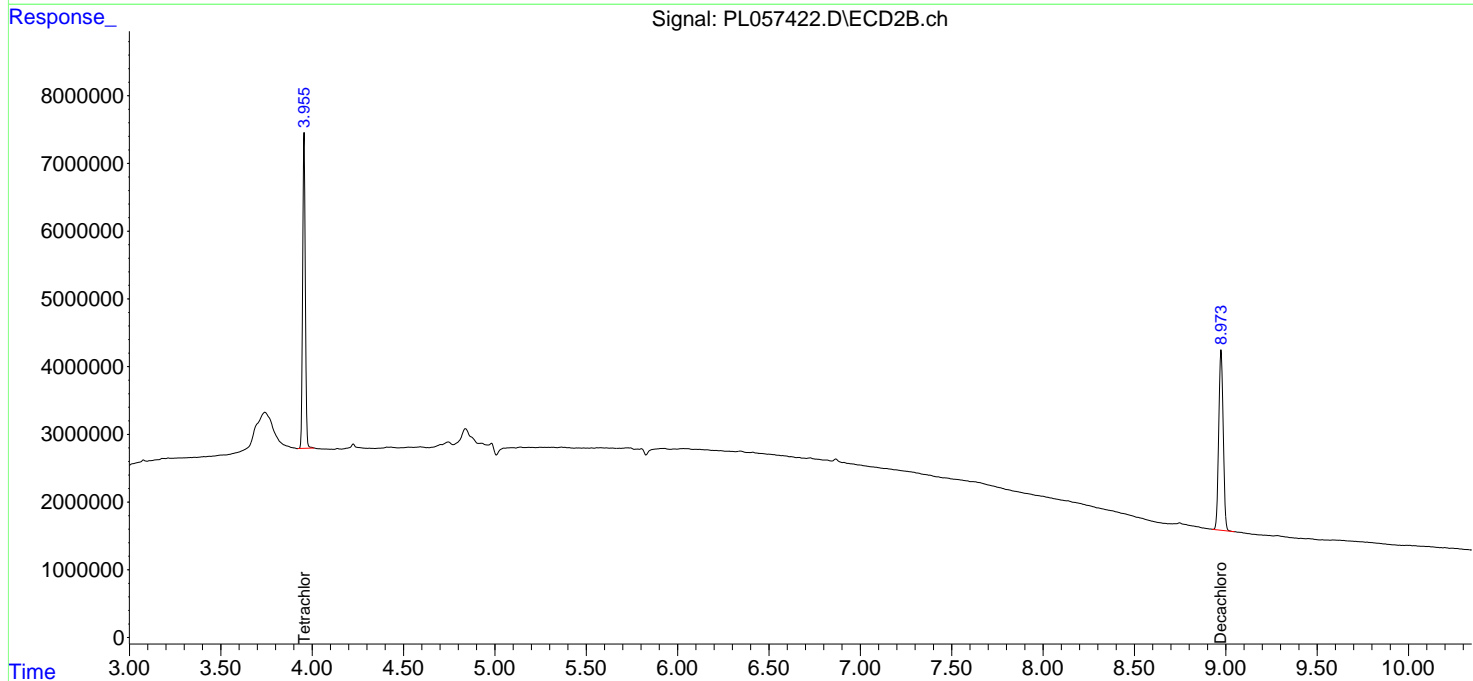
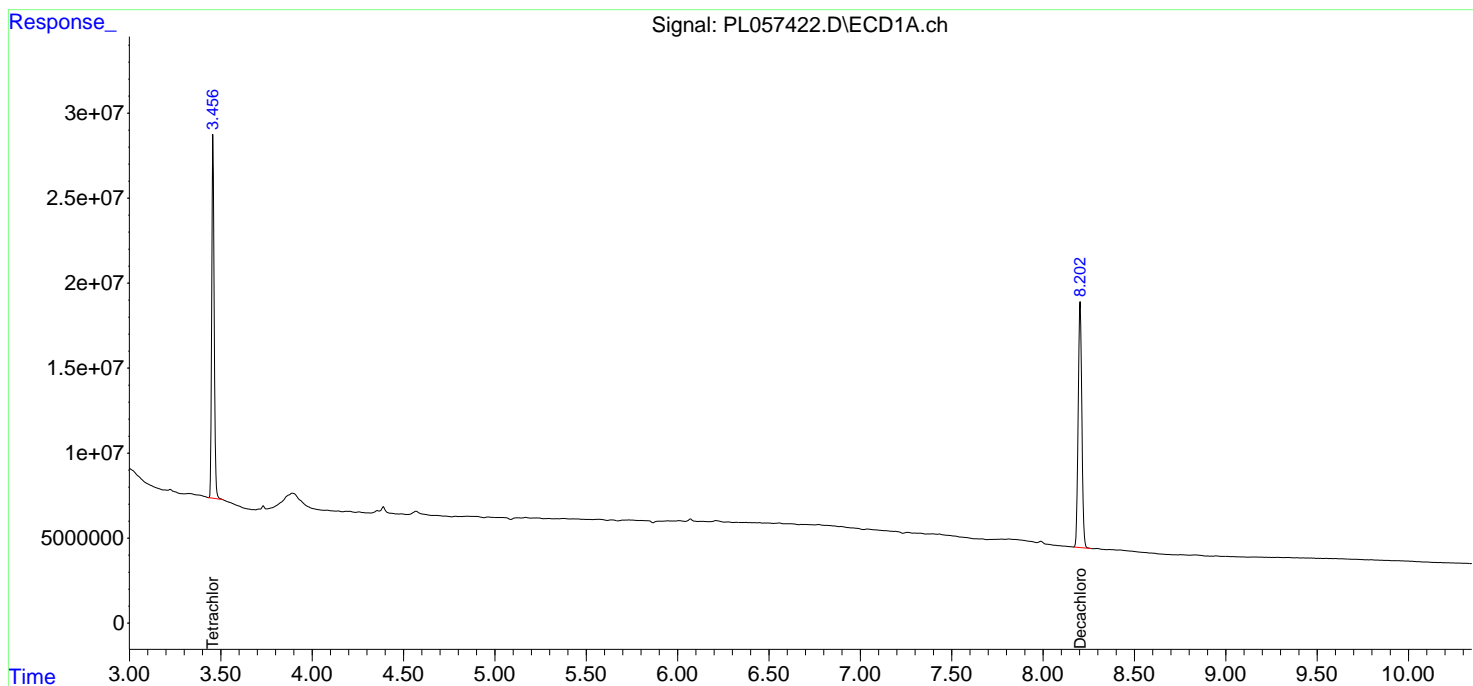
(f)=RT Delta > 1/2 Window (#)=Amounts differ by > 25% (m)=manual int.

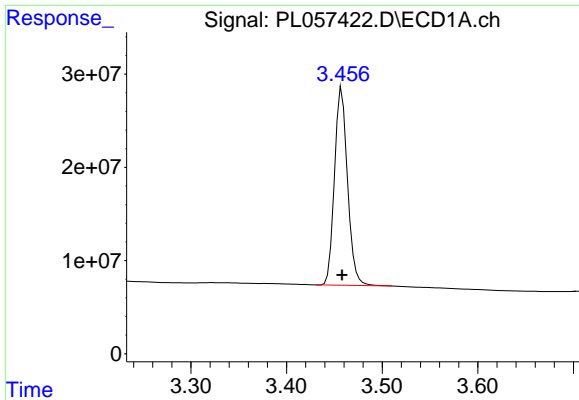
Data Path : Z:\pestpcbsrv\HPCHEM1\ECD_L\Data\PL031620\
 Data File : PL057422.D
 Signal(s) : Signal #1: ECD1A.ch Signal #2: ECD2B.ch
 Acq On : 16 Mar 2020 22:11
 Operator : AJ\MA
 Sample : I.BLK
 Misc :
 ALS Vial : 2 Sample Multiplier: 1

Instrument :
 ECD_L
 ClientSampled :
 I.BLK

Integration File signal 1: autoint1.e
 Integration File signal 2: autoint2.e
 Quant Time: Mar 17 01:43:46 2020
 Quant Method : Z:\pestpcbsrv\HPCHEM1\ECD_L\methods\PL031420.M
 Quant Title : GC Extractables
 QLast Update : Mon Mar 16 09:40:37 2020
 Response via : Initial Calibration
 Integrator: ChemStation

Volume Inj. : 1 µl
 Signal #1 Phase : ZB-MR2 Signal #2 Phase: ZB-MR1
 Signal #1 Info : 30M x 0.32mm x0.2 Signal #2 Info : 30M x 0.32mm x0.5µm

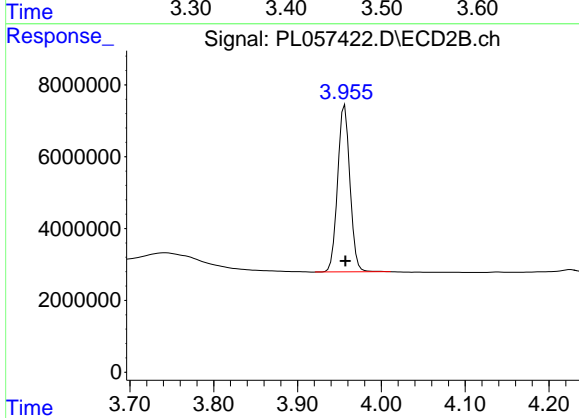




#1 Tetrachloro-m-xylene

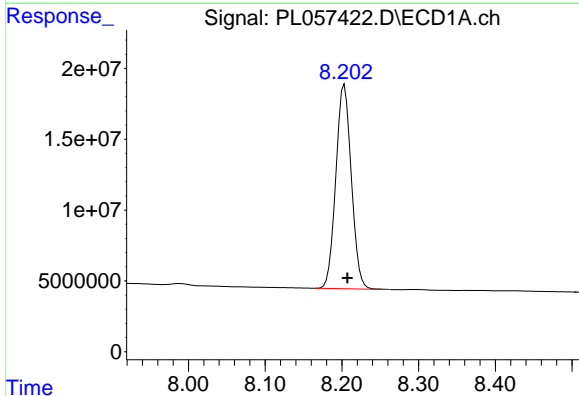
R.T.: 3.458 min
 Delta R.T.: 0.000 min
 Response: 200246925
 Conc: 21.60 ng/ml

Instrument :
 ECD_L
 ClientSampled :
 I.BLK



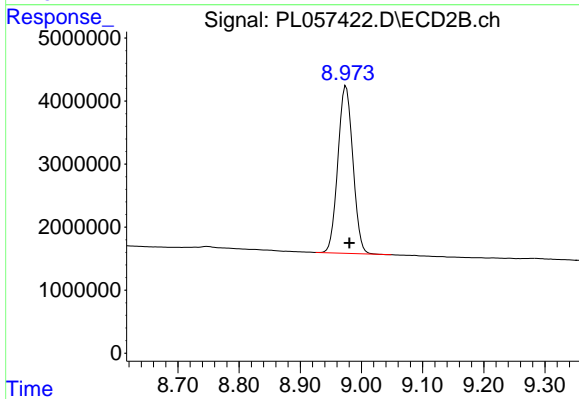
#1 Tetrachloro-m-xylene

R.T.: 3.956 min
 Delta R.T.: 0.000 min
 Response: 47451915
 Conc: 21.87 ng/ml



#28 Decachlorobiphenyl

R.T.: 8.203 min
 Delta R.T.: -0.004 min
 Response: 201956427
 Conc: 19.09 ng/ml



#28 Decachlorobiphenyl

R.T.: 8.975 min
 Delta R.T.: -0.005 min
 Response: 45232747
 Conc: 20.40 ng/ml