

Data Path : Z:\pestpcbsrv\HPCHEM1\ECD_L\Data\PL031720\
 Data File : PL057441.D
 Signal(s) : Signal #1: ECD1A.ch Signal #2: ECD2B.ch
 Acq On : 17 Mar 2020 13:52
 Operator : AJ\MA
 Sample : PB127598BS
 Misc :
 ALS Vial : 10 Sample Multiplier: 1

Instrument :
 ECD_L
 ClientSampled :

Integration File signal 1: autoint1.e
 Integration File signal 2: autoint2.e
 Quant Time: Mar 17 15:29:22 2020
 Quant Method : Z:\pestpcbsrv\HPCHEM1\ECD_L\methods\PL031420.M
 Quant Title : GC Extractables
 QLast Update : Mon Mar 16 09:40:37 2020
 Response via : Initial Calibration
 Integrator: ChemStation

Volume Inj. : 1 µl
 Signal #1 Phase : ZB-MR2 Signal #2 Phase: ZB-MR1
 Signal #1 Info : 30M x 0.32mm x0.2 Signal #2 Info : 30M x 0.32mm x0.5µm

	Compound	RT#1	RT#2	Resp#1	Resp#2	ng/ml	ng/ml

System Monitoring Compounds							
1)	SA Tetrachlo...	3.463	3.957	227.1E6	51151270	24.499	23.577
28)	SA Decachlor...	8.210	8.979	212.7E6	49006084	20.099	22.101
Target Compounds							
2)	A alpha-BHC	3.900	4.344	825.7E6	158.5E6	51.833	49.346
3)	MA gamma-BHC...	4.183	4.626	746.6E6	152.6E6	51.943	48.636
4)	MA Heptachlor	4.484	5.128	766.5E6	156.7E6	51.610	49.779
5)	MB Aldrin	4.732	5.430	738.8E6	153.6E6	53.558	50.349
6)	B beta-BHC	4.435	4.799	317.6E6	94901205	54.029	65.797
7)	B delta-BHC	4.639	5.013	743.6E6	143.7E6	52.980	54.945
8)	B Heptachlo...	5.174	5.815	682.1E6	143.8E6	53.221	52.718
9)	A Endosulfan I	5.513	6.169	608.6E6	138.8E6	51.186	48.799
10)	B gamma-Chl...	5.401	6.048	675.5E6	152.3E6	51.799	49.414
11)	B alpha-Chl...	5.459	6.120	648.1E6	149.7E6	50.148	48.102
12)	B 4,4'-DDE	5.623	6.279	641.3E6	140.0E6	51.490	49.242
13)	MA Dieldrin	5.756	6.425	635.4E6	145.6E6	50.381	49.226
14)	MA Endrin	6.013	6.642	500.7E6	107.1E6	43.797	44.386
15)	B Endosulfa...	6.285	6.852	536.9E6	119.7E6	49.434	45.583
16)	A 4,4'-DDD	6.138	6.768	501.1E6	115.6E6	51.129	50.618
17)	MA 4,4'-DDT	6.378	7.065	450.6E6	94359922	45.183	41.429
18)	B Endrin al...	6.454	6.976	448.2E6	103.4E6	48.534	46.494
19)	B Endosulfa...	6.666	7.198	493.8E6	117.8E6	49.167	48.299
20)	A Methoxychlor	6.923	7.524	213.6E6	51646978	39.799	39.711
21)	B Endrin ke...	7.157	7.666	570.6E6	126.6E6	50.484	48.889
22)	Mirex	7.344	8.116	375.3E6	88236463	46.338	46.208
24)	Chlordane-2	4.833	5.430f	1089383	153.6E6	2.998	1629.857 #
25)	Chlordane-3	5.401	6.048	675.5E6	152.3E6	598.989	401.637 #
26)	Chlordane-4	5.459	6.120	648.1E6	149.7E6	675.990	327.125 #
27)	Chlordane-5	6.285	0.000	536.9E6	0	1475.576	N.D. #

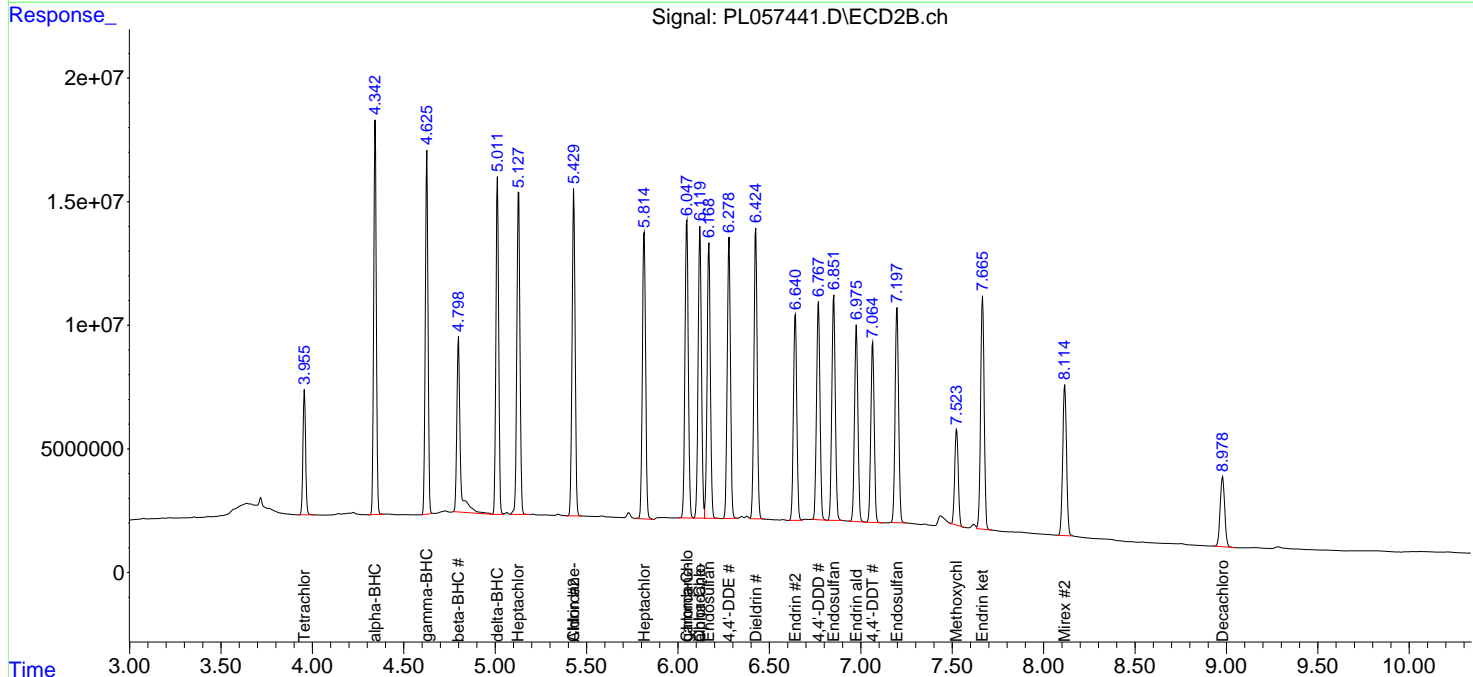
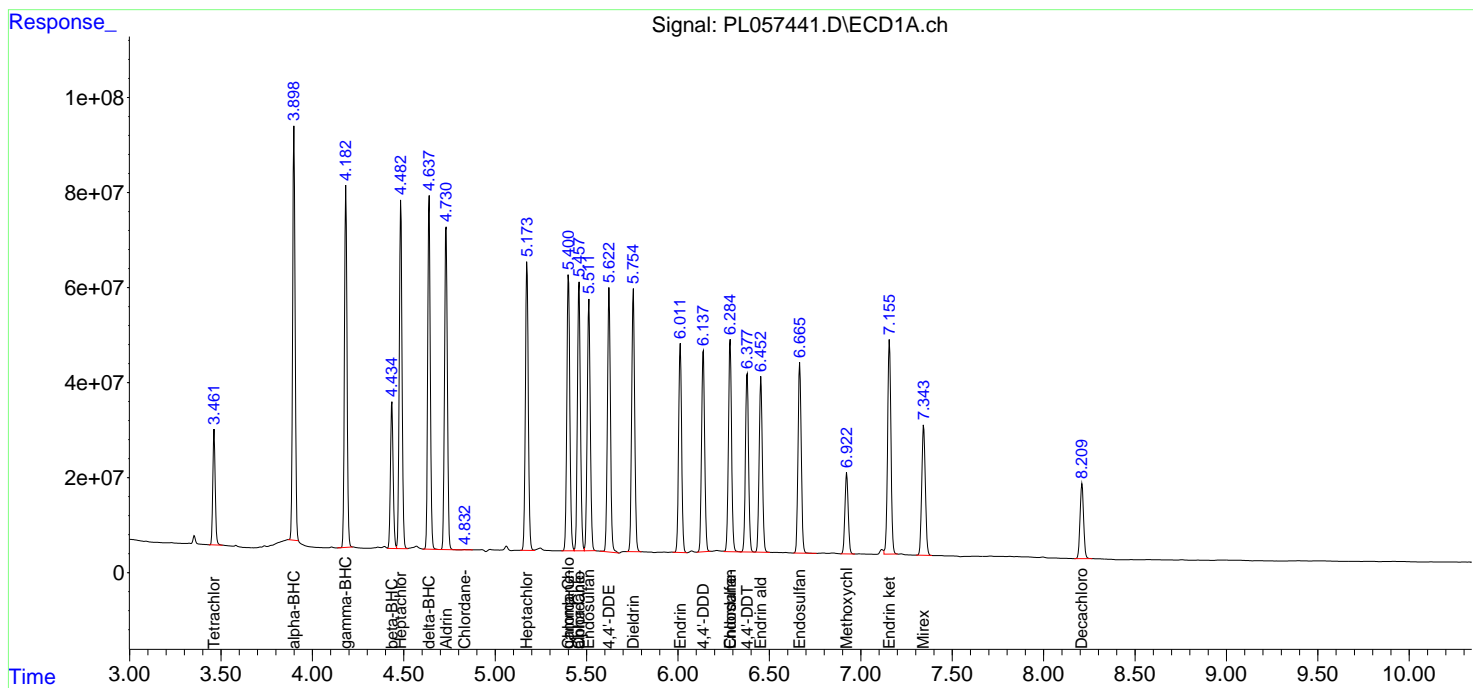
(f)=RT Delta > 1/2 Window (#)=Amounts differ by > 25% (m)=manual int.

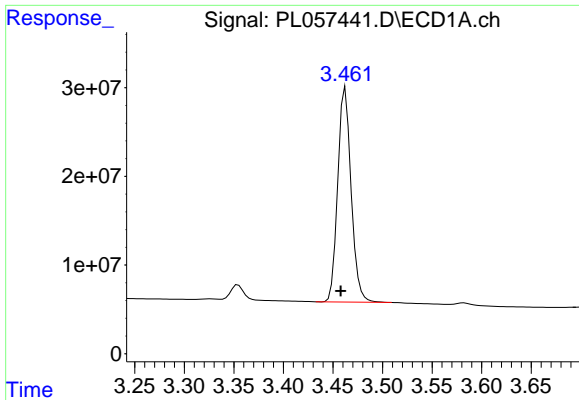
Data Path : Z:\pestpcbsrv\HPCHEM1\ECD_L\Data\PL031720\
 Data File : PL057441.D
 Signal(s) : Signal #1: ECD1A.ch Signal #2: ECD2B.ch
 Acq On : 17 Mar 2020 13:52
 Operator : AJ\MA
 Sample : PB127598BS
 Misc :
 ALS Vial : 10 Sample Multiplier: 1

Instrument :
 ECD_L
 ClientSampled :

Integration File signal 1: autoint1.e
 Integration File signal 2: autoint2.e
 Quant Time: Mar 17 15:29:22 2020
 Quant Method : Z:\pestpcbsrv\HPCHEM1\ECD_L\methods\PL031420.M
 Quant Title : GC Extractables
 QLast Update : Mon Mar 16 09:40:37 2020
 Response via : Initial Calibration
 Integrator: ChemStation

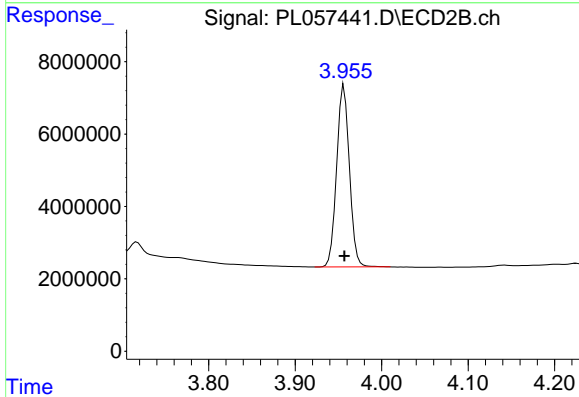
Volume Inj. : 1 µl
 Signal #1 Phase : ZB-MR2 Signal #2 Phase: ZB-MR1
 Signal #1 Info : 30M x 0.32mm x0.2 Signal #2 Info : 30M x 0.32mm x0.5µm



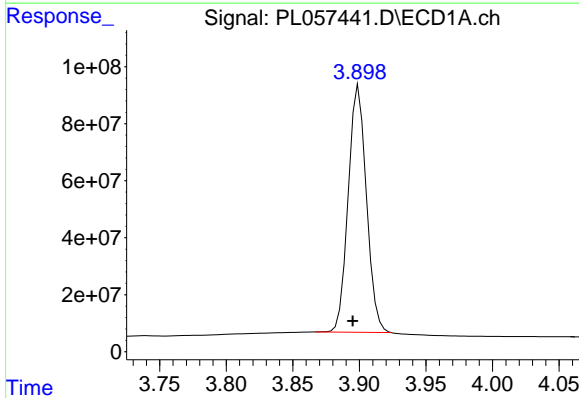


#1 Tetrachloro-m-xylene
 R.T.: 3.463 min
 Delta R.T.: 0.005 min
 Response: 227086952
 Conc: 24.50 ng/ml

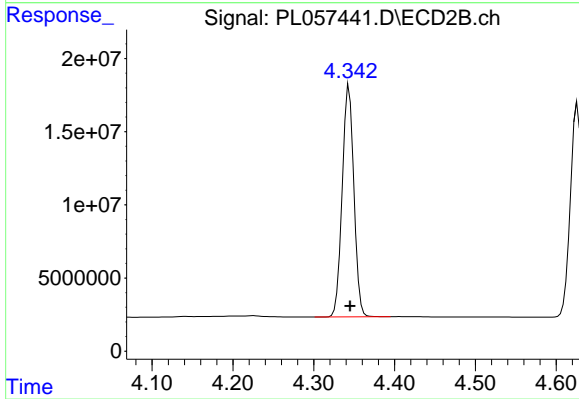
Instrument :
 ECD_L
 ClientSampleId :



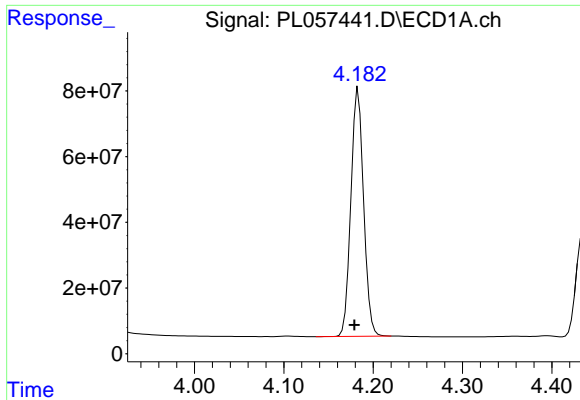
#1 Tetrachloro-m-xylene
 R.T.: 3.957 min
 Delta R.T.: 0.000 min
 Response: 51151270
 Conc: 23.58 ng/ml



#2 alpha-BHC
 R.T.: 3.900 min
 Delta R.T.: 0.005 min
 Response: 825666093
 Conc: 51.83 ng/ml

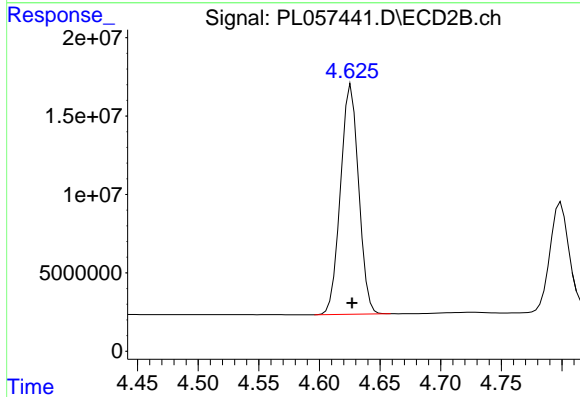


#2 alpha-BHC
 R.T.: 4.344 min
 Delta R.T.: -0.001 min
 Response: 158501687
 Conc: 49.35 ng/ml

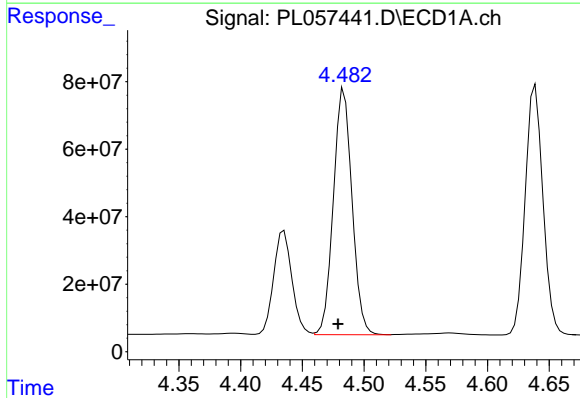


#3 gamma-BHC (Lindane)
R.T.: 4.183 min
Delta R.T.: 0.004 min
Response: 746562248
Conc: 51.94 ng/ml

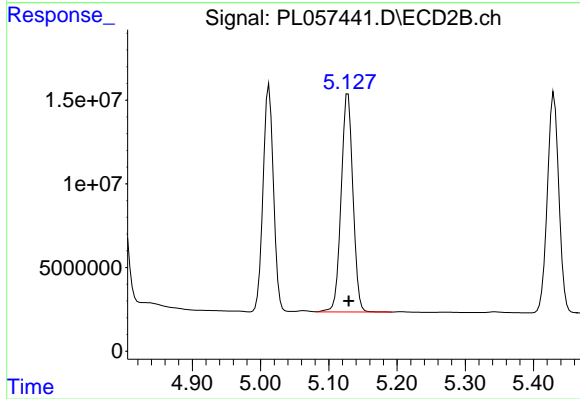
Instrument :
ECD_L
ClientSampled :



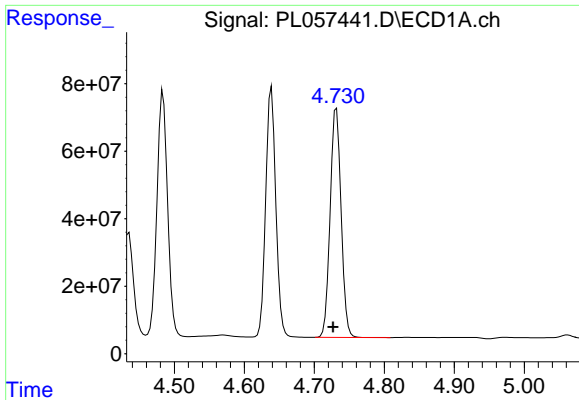
#3 gamma-BHC (Lindane)
R.T.: 4.626 min
Delta R.T.: 0.000 min
Response: 152591285
Conc: 48.64 ng/ml



#4 Heptachlor
R.T.: 4.484 min
Delta R.T.: 0.005 min
Response: 766529154
Conc: 51.61 ng/ml

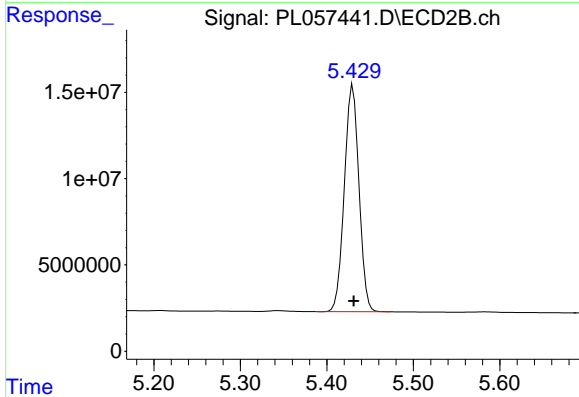


#4 Heptachlor
R.T.: 5.128 min
Delta R.T.: 0.000 min
Response: 156691456
Conc: 49.78 ng/ml

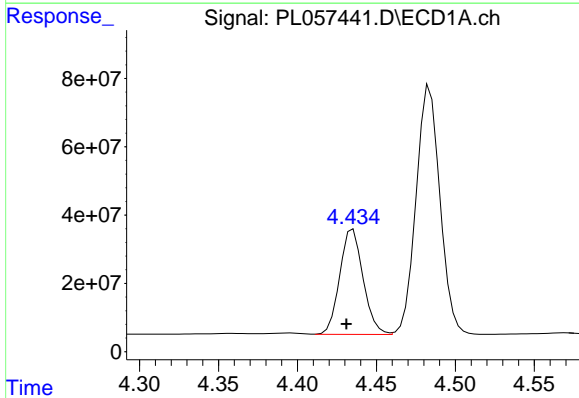


#5 Aldrin
 R.T.: 4.732 min
 Delta R.T.: 0.005 min
 Response: 738801363
 Conc: 53.56 ng/ml

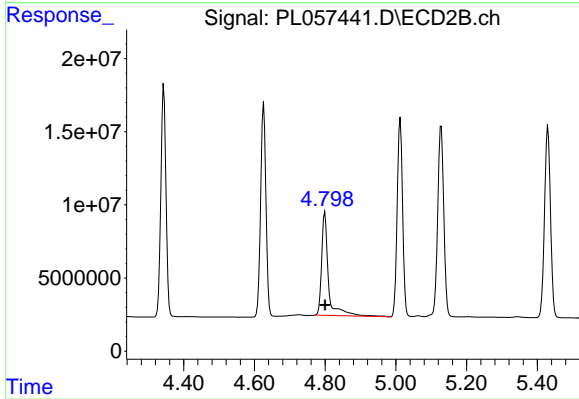
Instrument :
 ECD_L
 ClientSampled :



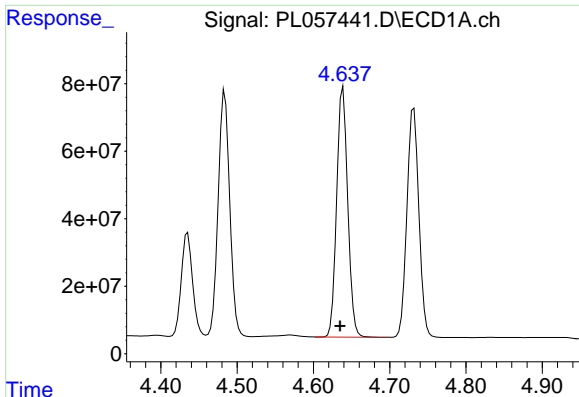
#5 Aldrin
 R.T.: 5.430 min
 Delta R.T.: 0.000 min
 Response: 153599620
 Conc: 50.35 ng/ml



#6 beta-BHC
 R.T.: 4.435 min
 Delta R.T.: 0.004 min
 Response: 317640232
 Conc: 54.03 ng/ml



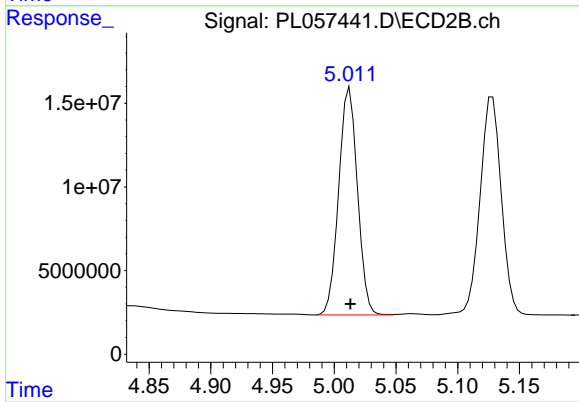
#6 beta-BHC
 R.T.: 4.799 min
 Delta R.T.: 0.000 min
 Response: 94901205
 Conc: 65.80 ng/ml



#7 delta-BHC

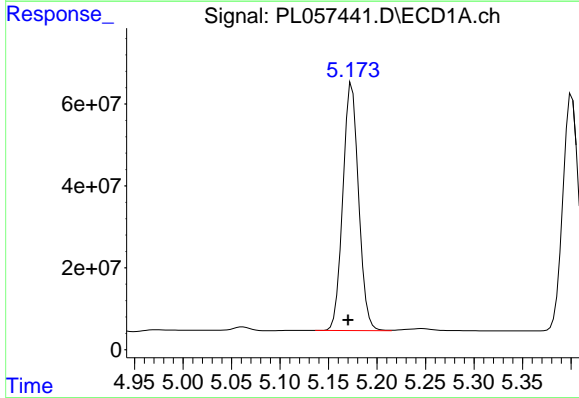
R.T.: 4.639 min
 Delta R.T.: 0.004 min
 Response: 743586694
 Conc: 52.98 ng/ml

Instrument :
 ECD_L
 ClientSampled :



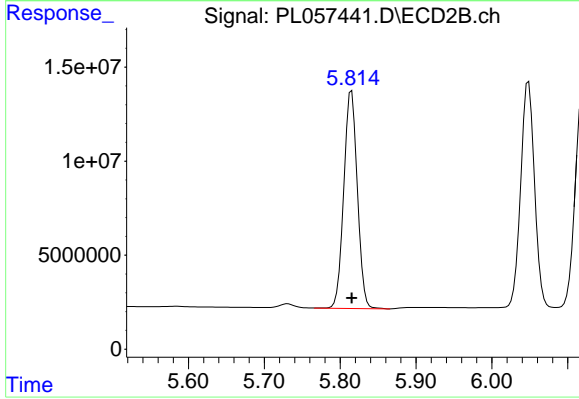
#7 delta-BHC

R.T.: 5.013 min
 Delta R.T.: 0.000 min
 Response: 143715725
 Conc: 54.94 ng/ml



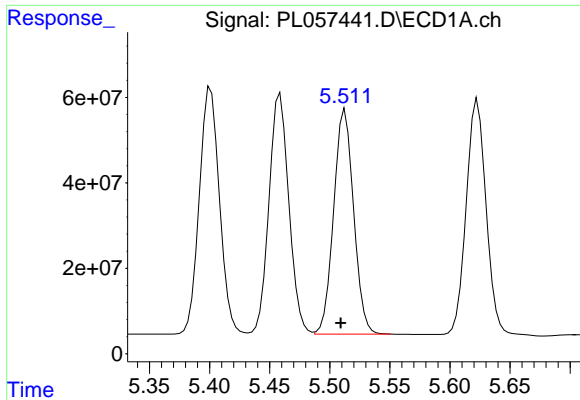
#8 Heptachlor epoxide

R.T.: 5.174 min
 Delta R.T.: 0.004 min
 Response: 682072969
 Conc: 53.22 ng/ml



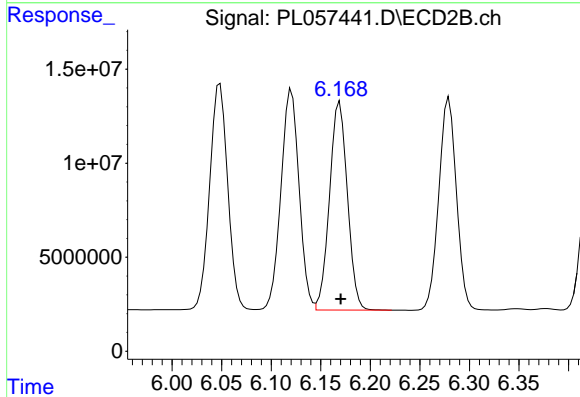
#8 Heptachlor epoxide

R.T.: 5.815 min
 Delta R.T.: 0.000 min
 Response: 143848541
 Conc: 52.72 ng/ml

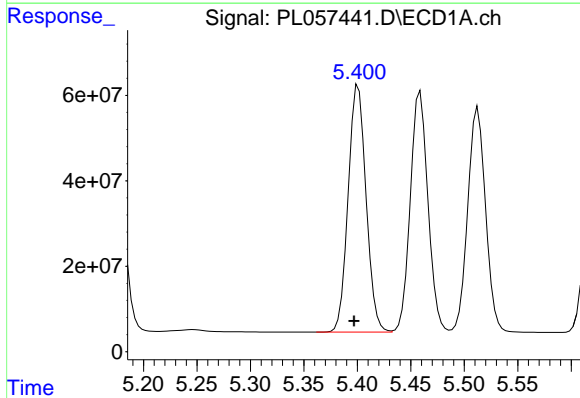


#9 Endosulfan I
 R.T.: 5.513 min
 Delta R.T.: 0.004 min
 Response: 608595460
 Conc: 51.19 ng/ml

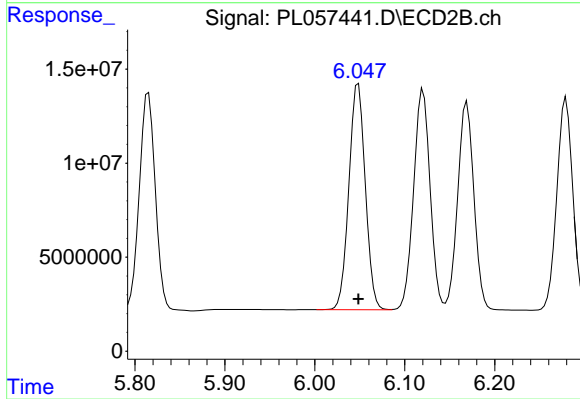
Instrument :
 ECD_L
 ClientSampleId :



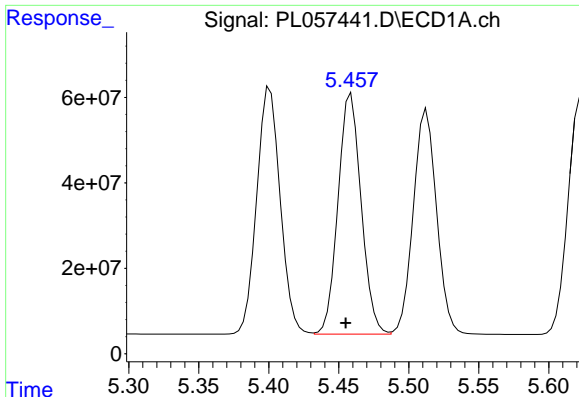
#9 Endosulfan I
 R.T.: 6.169 min
 Delta R.T.: 0.000 min
 Response: 138849748
 Conc: 48.80 ng/ml



#10 gamma-Chlordane
 R.T.: 5.401 min
 Delta R.T.: 0.004 min
 Response: 675467832
 Conc: 51.80 ng/ml



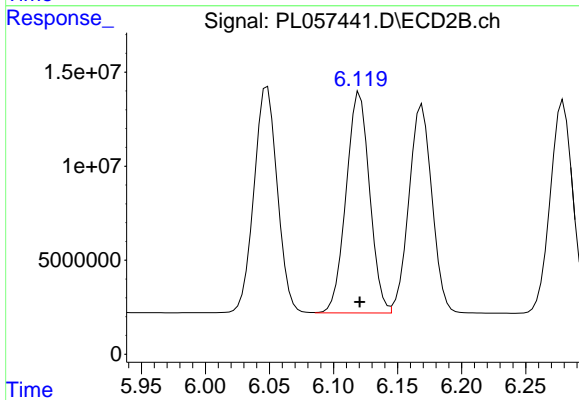
#10 gamma-Chlordane
 R.T.: 6.048 min
 Delta R.T.: 0.000 min
 Response: 152300499
 Conc: 49.41 ng/ml



#11 alpha-Chlordane

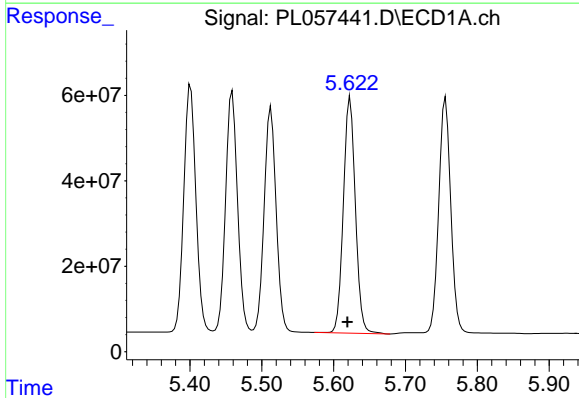
R.T.: 5.459 min
Delta R.T.: 0.004 min
Response: 648051580
Conc: 50.15 ng/ml

Instrument :
ECD_L
ClientSampled :



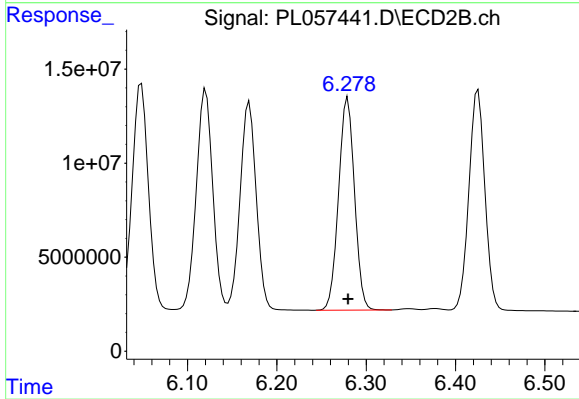
#11 alpha-Chlordane

R.T.: 6.120 min
Delta R.T.: 0.000 min
Response: 149723755
Conc: 48.10 ng/ml



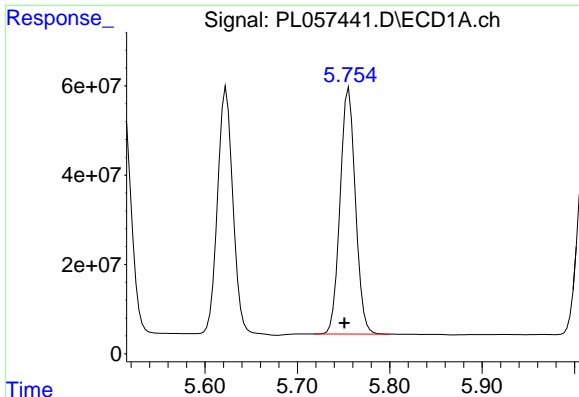
#12 4,4'-DDE

R.T.: 5.623 min
Delta R.T.: 0.004 min
Response: 641346002
Conc: 51.49 ng/ml



#12 4,4'-DDE

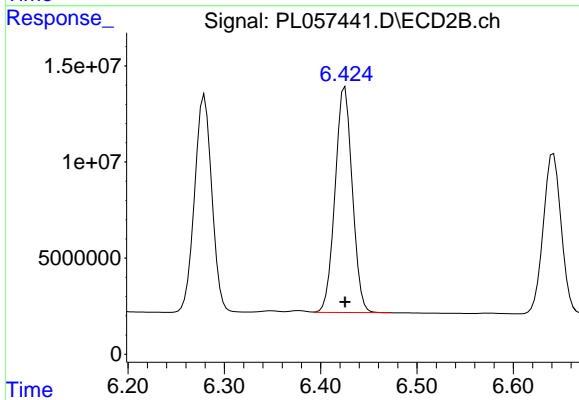
R.T.: 6.279 min
Delta R.T.: 0.000 min
Response: 139968699
Conc: 49.24 ng/ml



#13 Dieldrin

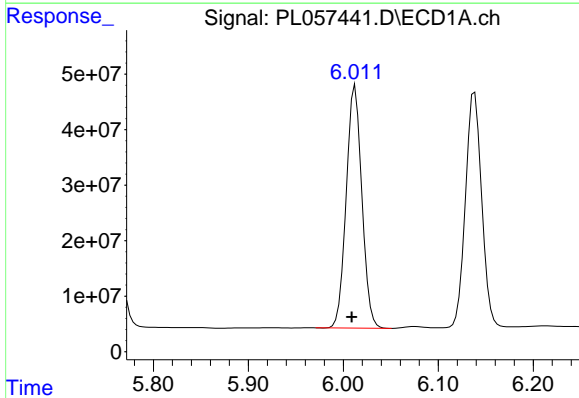
R.T.: 5.756 min
 Delta R.T.: 0.005 min
 Response: 635432753
 Conc: 50.38 ng/ml

Instrument :
 ECD_L
 ClientSampled :



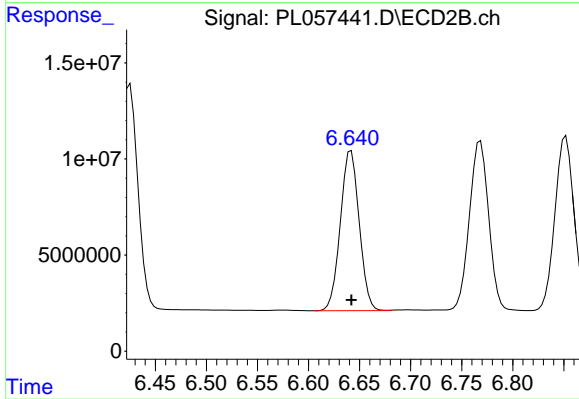
#13 Dieldrin

R.T.: 6.425 min
 Delta R.T.: 0.000 min
 Response: 145608157
 Conc: 49.23 ng/ml



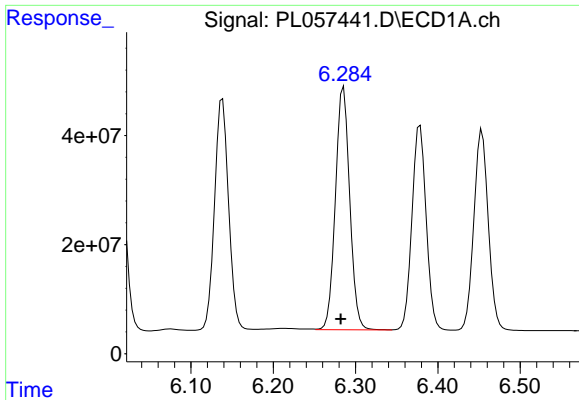
#14 Endrin

R.T.: 6.013 min
 Delta R.T.: 0.004 min
 Response: 500660095
 Conc: 43.80 ng/ml



#14 Endrin

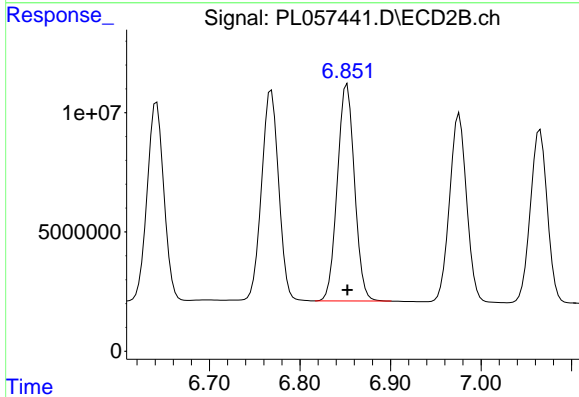
R.T.: 6.642 min
 Delta R.T.: 0.000 min
 Response: 107093767
 Conc: 44.39 ng/ml



#15 Endosulfan II

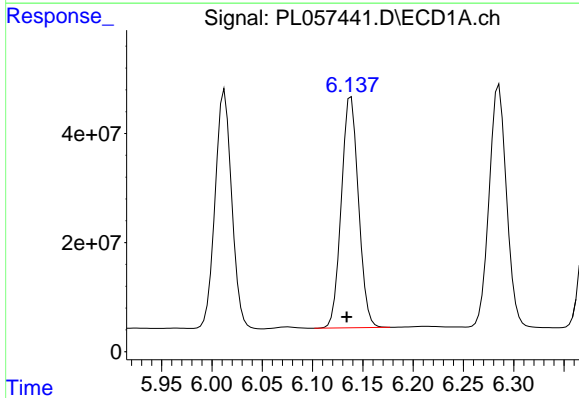
R.T.: 6.285 min
 Delta R.T.: 0.003 min
 Response: 536899947
 Conc: 49.43 ng/ml

Instrument :
 ECD_L
 ClientSampled :



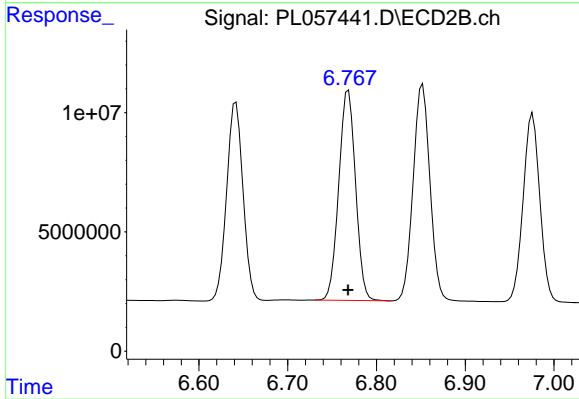
#15 Endosulfan II

R.T.: 6.852 min
 Delta R.T.: 0.000 min
 Response: 119739964
 Conc: 45.58 ng/ml



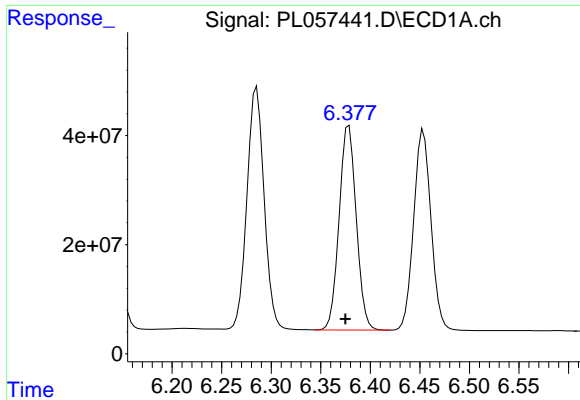
#16 4,4'-DDD

R.T.: 6.138 min
 Delta R.T.: 0.004 min
 Response: 501135593
 Conc: 51.13 ng/ml



#16 4,4'-DDD

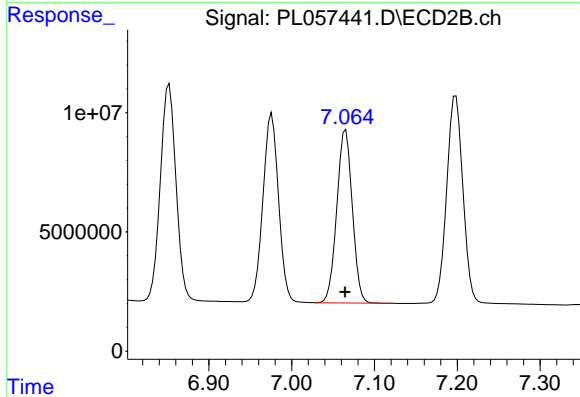
R.T.: 6.768 min
 Delta R.T.: 0.000 min
 Response: 115597079
 Conc: 50.62 ng/ml



#17 4,4'-DDT

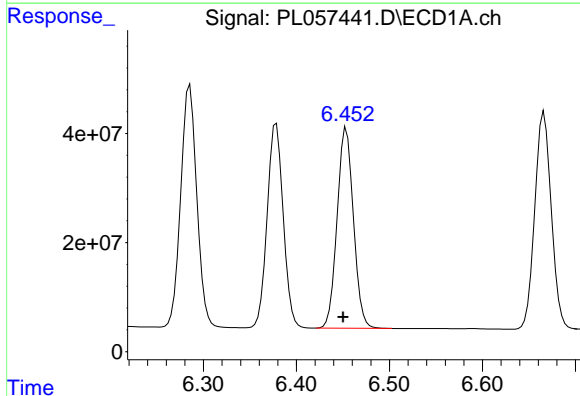
R.T.: 6.378 min
 Delta R.T.: 0.003 min
 Response: 450597096
 Conc: 45.18 ng/ml

Instrument :
 ECD_L
 ClientSampleId :



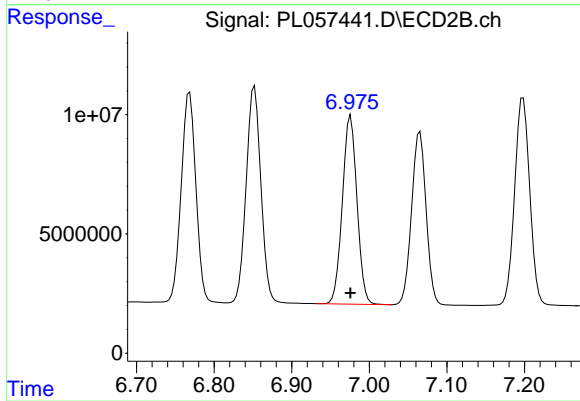
#17 4,4'-DDT

R.T.: 7.065 min
 Delta R.T.: 0.000 min
 Response: 94359922
 Conc: 41.43 ng/ml



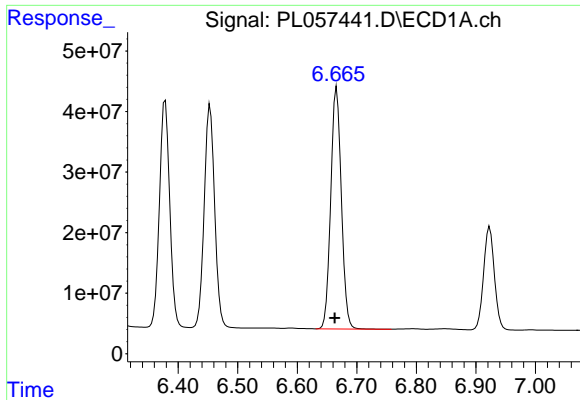
#18 Endrin aldehyde

R.T.: 6.454 min
 Delta R.T.: 0.004 min
 Response: 448225878
 Conc: 48.53 ng/ml



#18 Endrin aldehyde

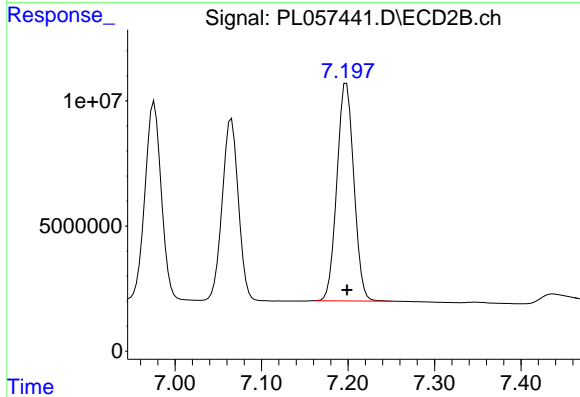
R.T.: 6.976 min
 Delta R.T.: 0.000 min
 Response: 103359486
 Conc: 46.49 ng/ml



#19 Endosulfan Sulfate

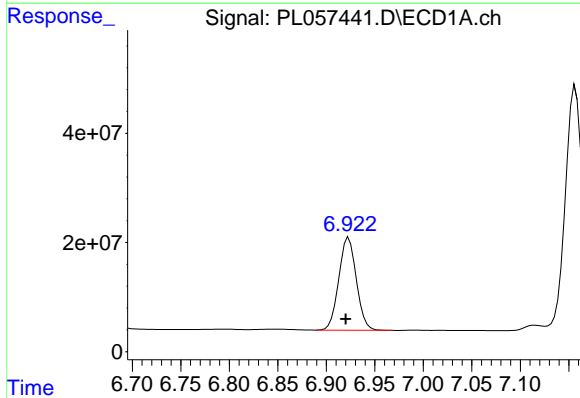
R.T.: 6.666 min
 Delta R.T.: 0.003 min
 Response: 493758123
 Conc: 49.17 ng/ml

Instrument :
 ECD_L
 ClientSampleId :



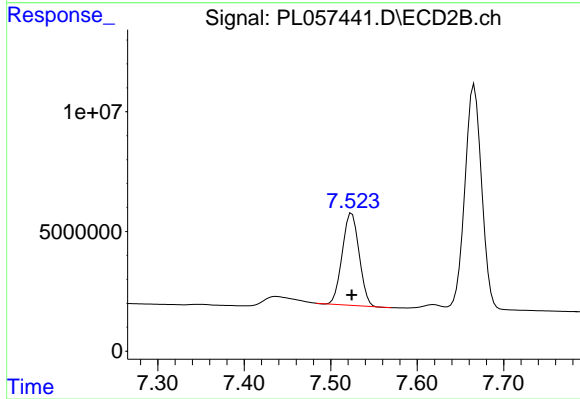
#19 Endosulfan Sulfate

R.T.: 7.198 min
 Delta R.T.: 0.000 min
 Response: 117803536
 Conc: 48.30 ng/ml



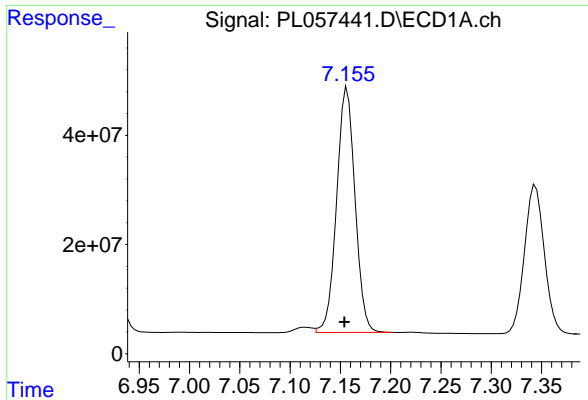
#20 Methoxychlor

R.T.: 6.923 min
 Delta R.T.: 0.003 min
 Response: 213557131
 Conc: 39.80 ng/ml



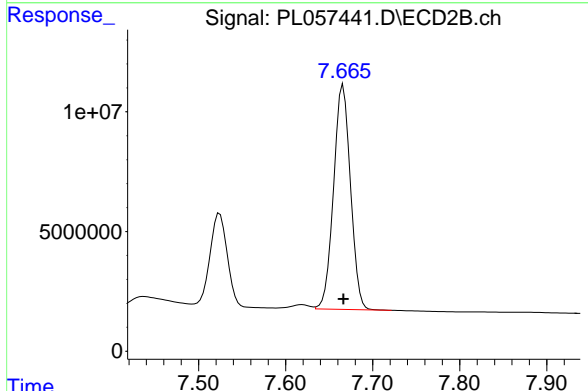
#20 Methoxychlor

R.T.: 7.524 min
 Delta R.T.: 0.000 min
 Response: 51646978
 Conc: 39.71 ng/ml

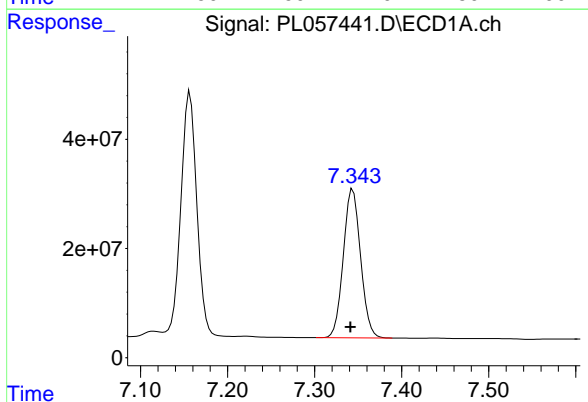


#21 Endrin ketone
 R.T.: 7.157 min
 Delta R.T.: 0.003 min
 Response: 570598531
 Conc: 50.48 ng/ml

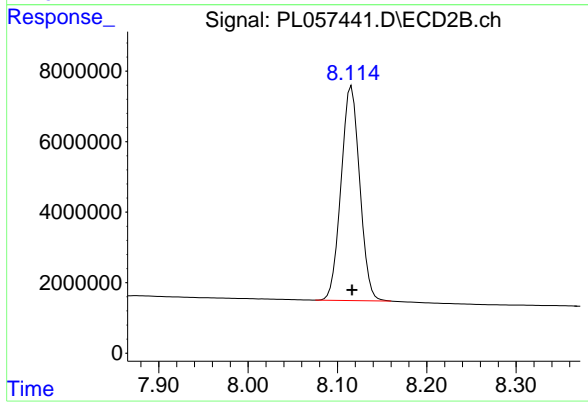
Instrument :
 ECD_L
 ClientSampled :



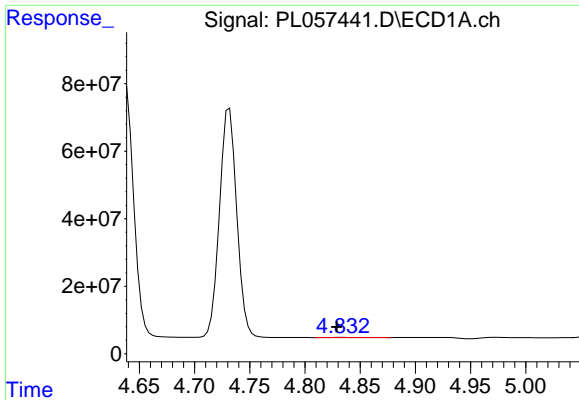
#21 Endrin ketone
 R.T.: 7.666 min
 Delta R.T.: 0.000 min
 Response: 126555208
 Conc: 48.89 ng/ml



#22 Mirex
 R.T.: 7.344 min
 Delta R.T.: 0.003 min
 Response: 375306450
 Conc: 46.34 ng/ml



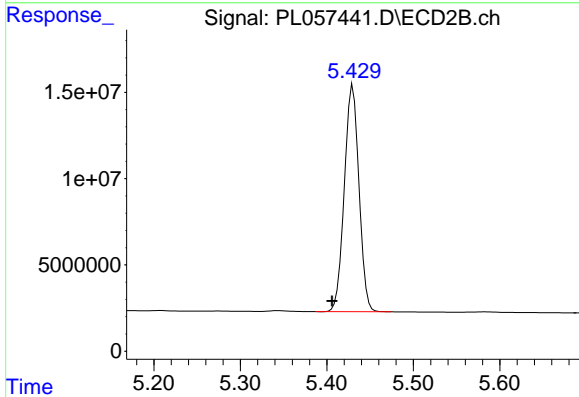
#22 Mirex
 R.T.: 8.116 min
 Delta R.T.: 0.000 min
 Response: 88236463
 Conc: 46.21 ng/ml



#24 Chlordane-2

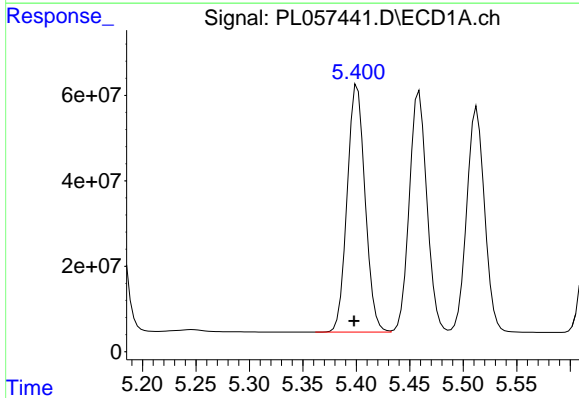
R.T.: 4.833 min
 Delta R.T.: 0.004 min
 Response: 1089383
 Conc: 3.00 ng/ml

Instrument :
 ECD_L
 ClientSampleId :



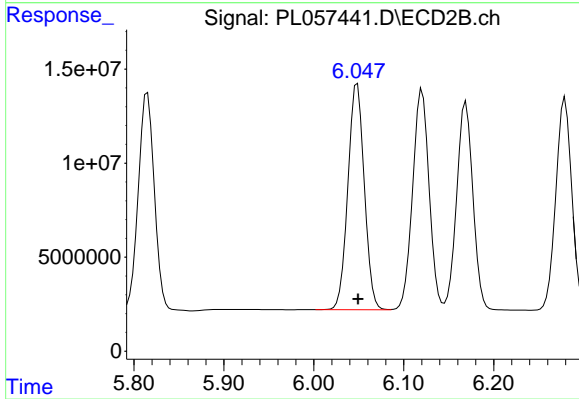
#24 Chlordane-2

R.T.: 5.430 min
 Delta R.T.: 0.024 min
 Response: 153599620
 Conc: 1629.86 ng/ml



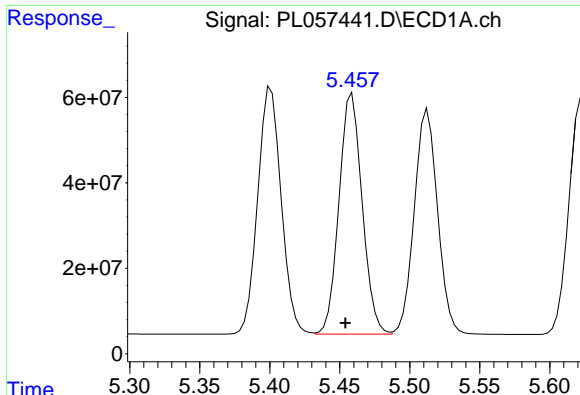
#25 Chlordane-3

R.T.: 5.401 min
 Delta R.T.: 0.003 min
 Response: 675467832
 Conc: 598.99 ng/ml



#25 Chlordane-3

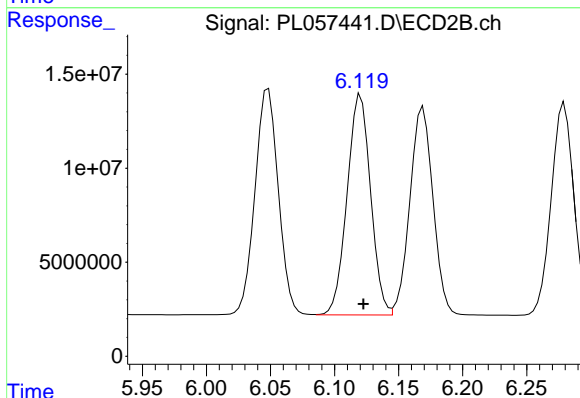
R.T.: 6.048 min
 Delta R.T.: 0.000 min
 Response: 152300499
 Conc: 401.64 ng/ml



#26 Chlordane-4

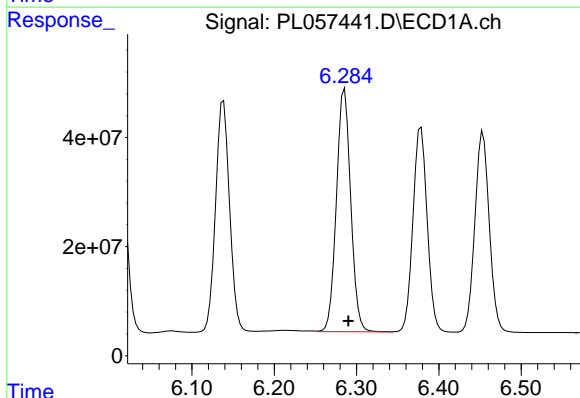
R.T.: 5.459 min
 Delta R.T.: 0.005 min
 Response: 648051580
 Conc: 675.99 ng/ml

Instrument :
 ECD_L
 ClientSampleId :



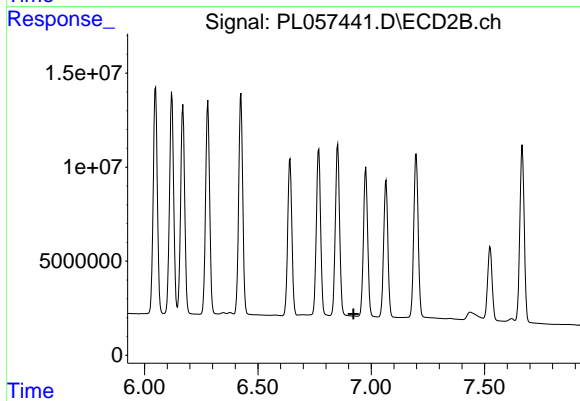
#26 Chlordane-4

R.T.: 6.120 min
 Delta R.T.: -0.002 min
 Response: 149723755
 Conc: 327.13 ng/ml



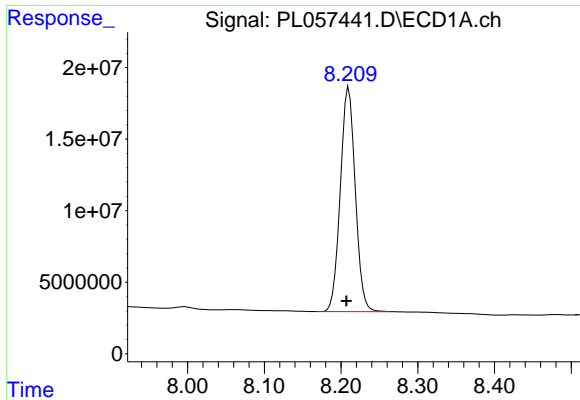
#27 Chlordane-5

R.T.: 6.285 min
 Delta R.T.: -0.005 min
 Response: 536899947
 Conc: 1475.58 ng/ml



#27 Chlordane-5

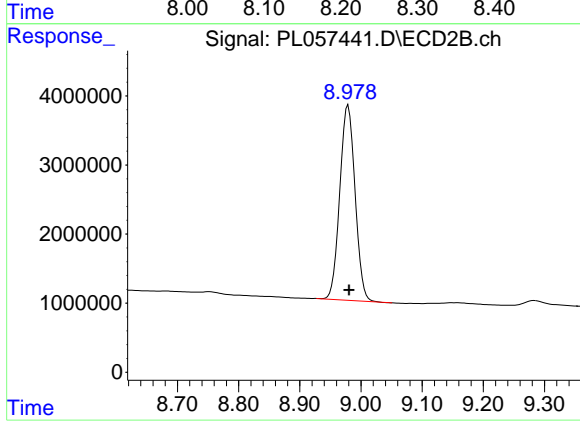
R.T.: 0.000 min
 Exp R.T. : 6.922 min
 Response: 0
 Conc: N.D.



#28 Decachlorobiphenyl

R.T.: 8.210 min
Delta R.T.: 0.003 min
Response: 212676760
Conc: 20.10 ng/ml

Instrument :
ECD_L
ClientSampleId :



#28 Decachlorobiphenyl

R.T.: 8.979 min
Delta R.T.: -0.001 min
Response: 49006084
Conc: 22.10 ng/ml