

Data Path : Z:\pestpcbsrv\HPCHEM1\ECD_L\Data\PL031820\
 Data File : PL057463.D
 Signal(s) : Signal #1: ECD1A.ch Signal #2: ECD2B.ch
 Acq On : 18 Mar 2020 16:23
 Operator : AJ\MA
 Sample : L1954-02
 Misc :
 ALS Vial : 10 Sample Multiplier: 1

Instrument :
 ECD_L
 ClientSampled :

Integration File signal 1: autoint1.e
 Integration File signal 2: autoint2.e
 Quant Time: Mar 19 01:28:51 2020
 Quant Method : Z:\pestpcbsrv\HPCHEM1\ECD_L\methods\PL031420.M
 Quant Title : GC Extractables
 QLast Update : Mon Mar 16 09:40:37 2020
 Response via : Initial Calibration
 Integrator: ChemStation

Volume Inj. : 1 µl
 Signal #1 Phase : ZB-MR2 Signal #2 Phase: ZB-MR1
 Signal #1 Info : 30M x 0.32mm x0.2 Signal #2 Info : 30M x 0.32mm x0.5µm

Compound	RT#1	RT#2	Resp#1	Resp#2	ng/ml	ng/ml

System Monitoring Compounds						
1) SA Tetrachlo...	3.457	3.956	122.5E6	29012870	13.215	13.373
28) SA Decachlor...	8.202	8.974	140.7E6	31841010	13.297	14.360
Target Compounds						
2) A alpha-BHC	3.894	0.000	3225879	0	0.203	N.D. #
3) MA gamma-BHC...	4.184	0.000	63236	0	0.004	N.D. #
4) MA Heptachlor	4.476	5.127	4313329	4927289	0.290	1.565 #
5) MB Aldrin	4.731	5.402f	670962	1685000	0.049	0.552 #
9) A Endosulfan I	5.524f	0.000	83278	0	0.007	N.D. #
10) B gamma-Chl...	5.416f	6.046	25271027	3675865	1.938	1.193 #
11) B alpha-Chl...	5.451	6.119	16528973	9866224	1.279	3.170 #
12) B 4,4'-DDE	5.616	0.000	3220173	0	0.259	N.D. #
13) MA Dieldrin	5.741	0.000	8223106	0	0.652	N.D. #
14) MA Endrin	6.004	0.000	1271765	0	0.111	N.D. #
15) B Endosulfa...	6.285	0.000	11268889	0	1.038	N.D. #
16) A 4,4'-DDD	6.130	0.000	1558753	0	0.159	N.D. #
17) MA 4,4'-DDT	6.370	7.060	15848476	2529364	1.589	1.111 #
18) B Endrin al...	6.463	0.000	1094988	0	0.119	N.D. #
19) B Endosulfa...	6.654	0.000	1227447	0	0.122	N.D. #
20) A Methoxychlor	6.900f	0.000	4235324	0	0.789	N.D. #
21) B Endrin ke...	7.174f	0.000	496840	0	0.044	N.D. #
23) Chlordane-1	4.325	4.938	5318434	4183242	16.386	50.341 #
24) Chlordane-2	4.829	5.402	10423754	1685000	28.686	17.880 #
25) Chlordane-3	5.416f	6.046	25271027	3675865	22.410	9.694 #
26) Chlordane-4	5.451	6.119	16528973	9866224	17.242	21.556 #
27) Chlordane-5	6.285	6.917	11268889	1354310	30.971	16.900 #

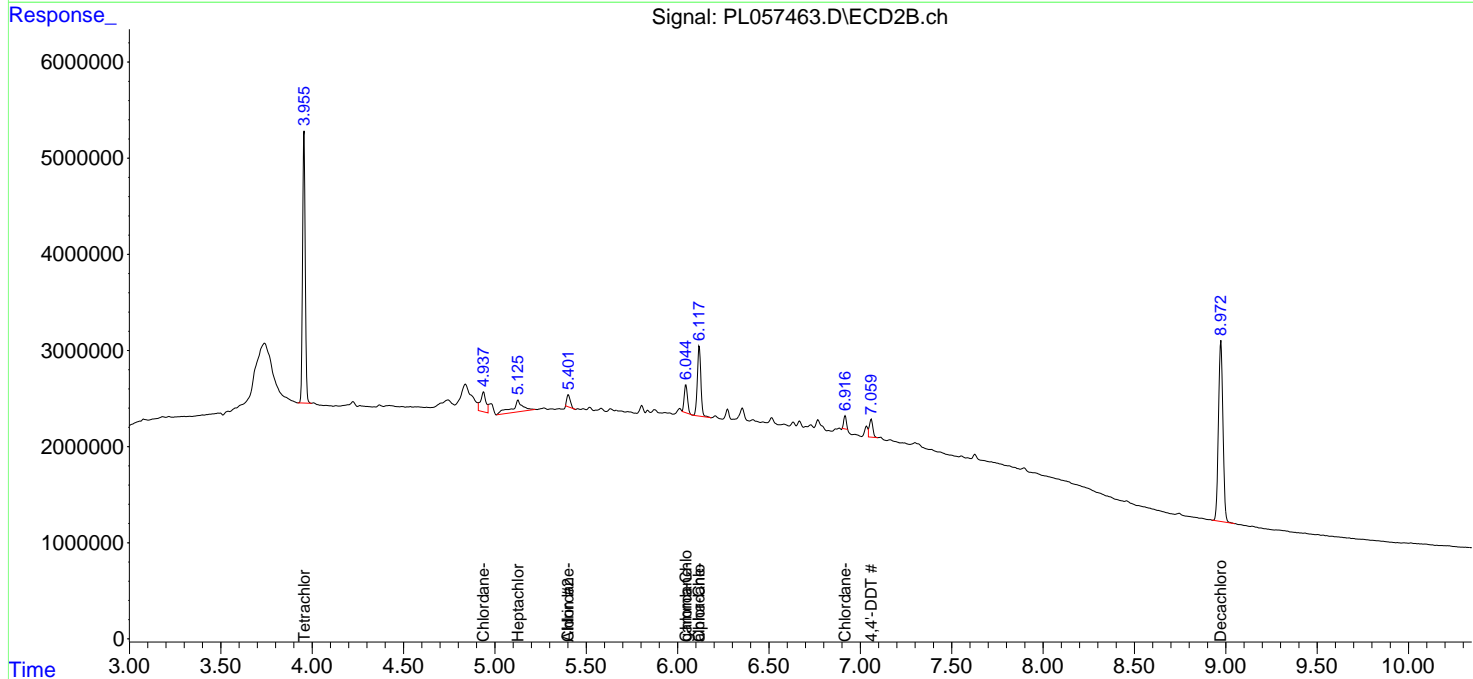
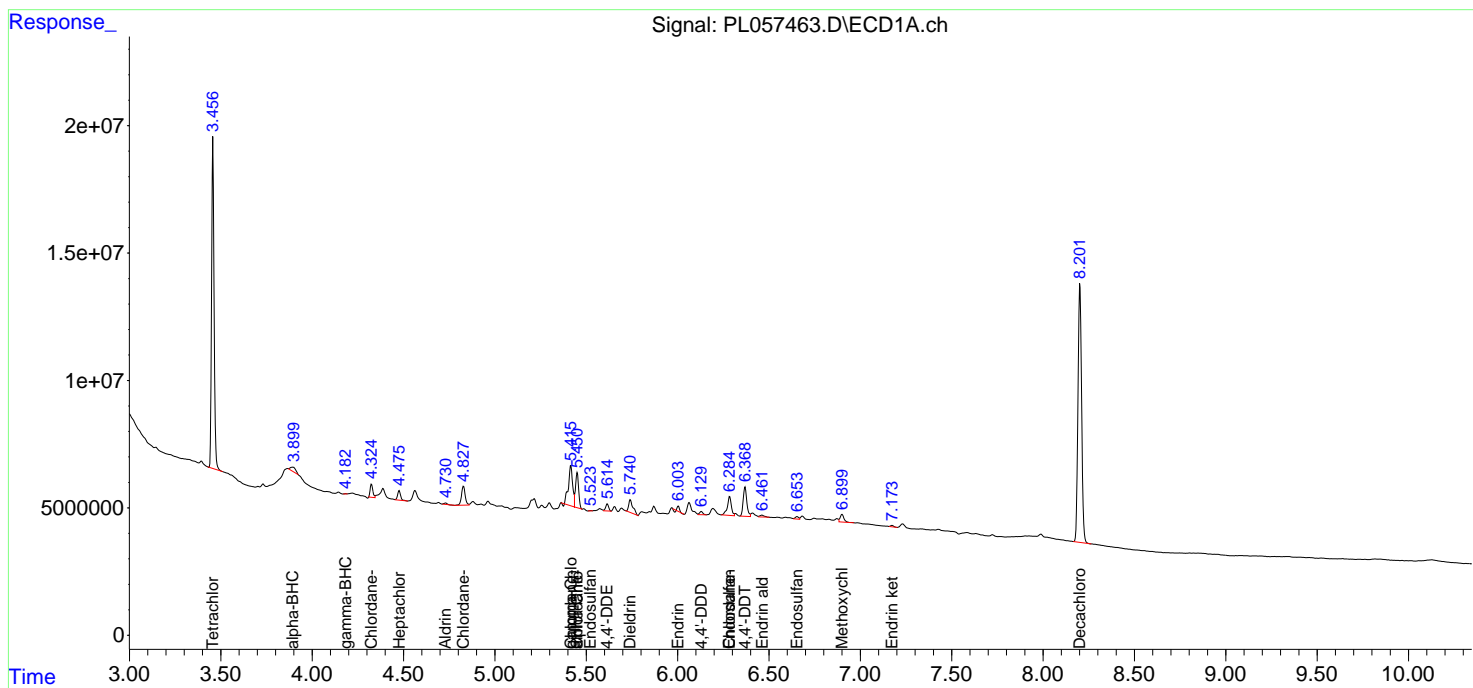
(f)=RT Delta > 1/2 Window (#)=Amounts differ by > 25% (m)=manual int.

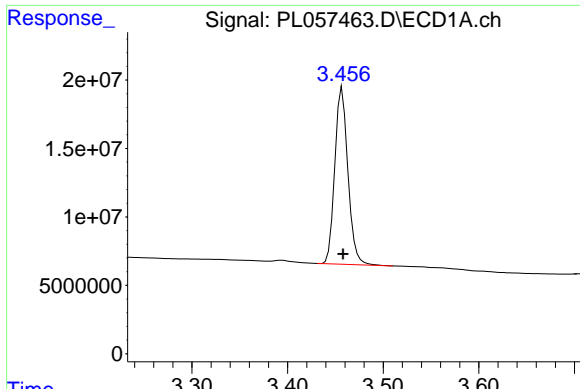
Data Path : Z:\pestpcbsrv\HPCHEM1\ECD_L\Data\PL031820\
 Data File : PL057463.D
 Signal(s) : Signal #1: ECD1A.ch Signal #2: ECD2B.ch
 Acq On : 18 Mar 2020 16:23
 Operator : AJ\MA
 Sample : L1954-02
 Misc :
 ALS Vial : 10 Sample Multiplier: 1

Instrument :
 ECD_L
 ClientSampled :

Integration File signal 1: autoint1.e
 Integration File signal 2: autoint2.e
 Quant Time: Mar 19 01:28:51 2020
 Quant Method : Z:\pestpcbsrv\HPCHEM1\ECD_L\methods\PL031420.M
 Quant Title : GC Extractables
 QLast Update : Mon Mar 16 09:40:37 2020
 Response via : Initial Calibration
 Integrator: ChemStation

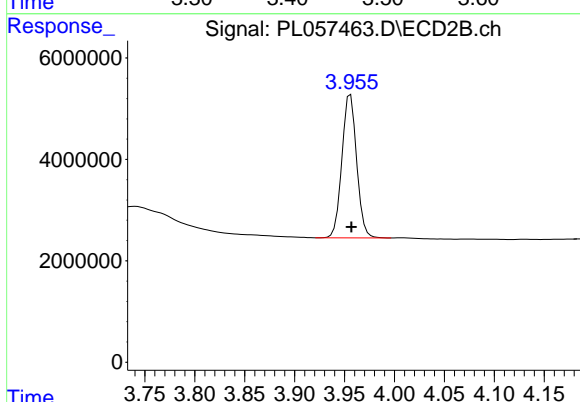
Volume Inj. : 1 µl
 Signal #1 Phase : ZB-MR2 Signal #2 Phase: ZB-MR1
 Signal #1 Info : 30M x 0.32mm x0.2 Signal #2 Info : 30M x 0.32mm x0.5µm



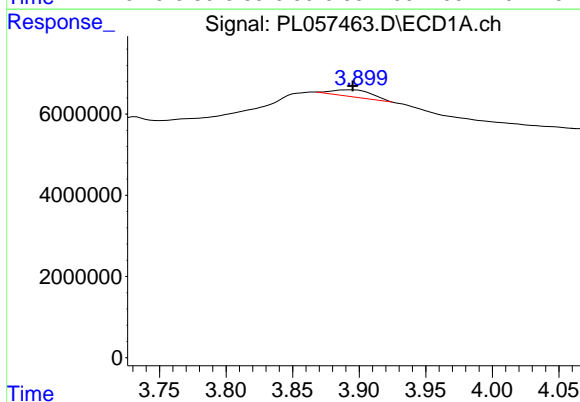


#1 Tetrachloro-m-xylene
 R.T.: 3.457 min
 Delta R.T.: 0.000 min
 Response: 122494854
 Conc: 13.21 ng/ml

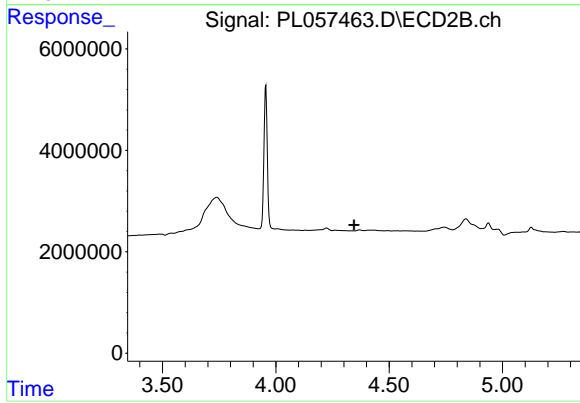
Instrument :
 ECD_L
 ClientSampled :



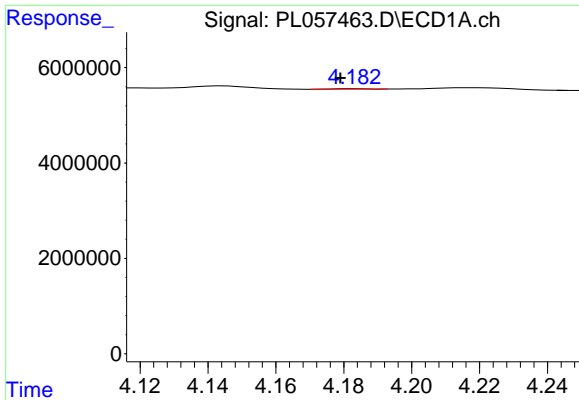
#1 Tetrachloro-m-xylene
 R.T.: 3.956 min
 Delta R.T.: -0.001 min
 Response: 29012870
 Conc: 13.37 ng/ml



#2 alpha-BHC
 R.T.: 3.894 min
 Delta R.T.: -0.001 min
 Response: 3225879
 Conc: 0.20 ng/ml

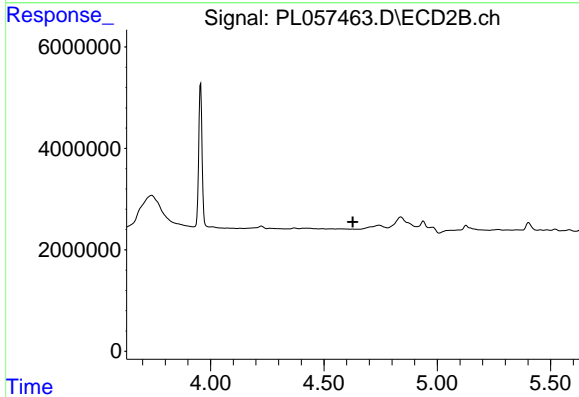


#2 alpha-BHC
 R.T.: 0.000 min
 Exp R.T. : 4.345 min
 Response: 0
 Conc: N.D.

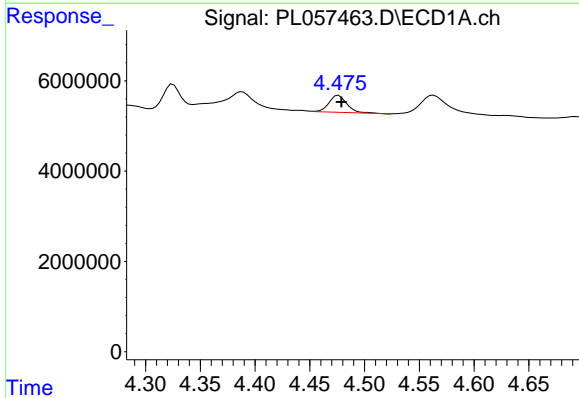


#3 gamma-BHC (Lindane)
 R.T.: 4.184 min
 Delta R.T.: 0.005 min
 Response: 63236
 Conc: 0.00 ng/ml

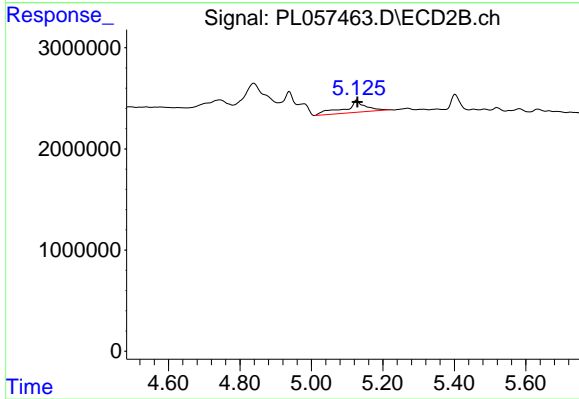
Instrument :
 ECD_L
 ClientSampleId :



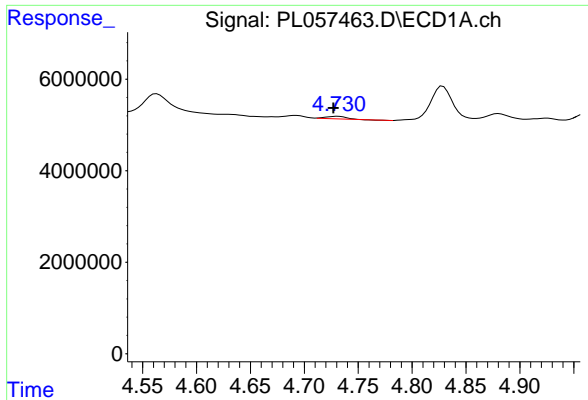
#3 gamma-BHC (Lindane)
 R.T.: 0.000 min
 Exp R.T. : 4.627 min
 Response: 0
 Conc: N.D.



#4 Heptachlor
 R.T.: 4.476 min
 Delta R.T.: -0.003 min
 Response: 4313329
 Conc: 0.29 ng/ml

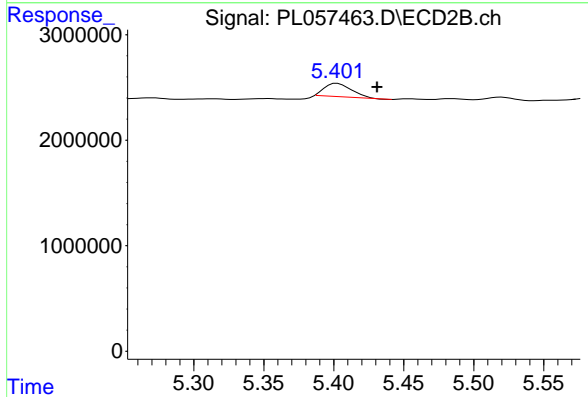


#4 Heptachlor
 R.T.: 5.127 min
 Delta R.T.: -0.002 min
 Response: 4927289
 Conc: 1.57 ng/ml

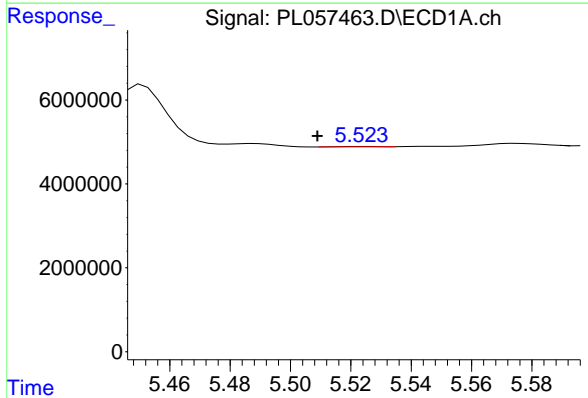


#5 Aldrin
 R.T.: 4.731 min
 Delta R.T.: 0.004 min
 Response: 670962
 Conc: 0.05 ng/ml

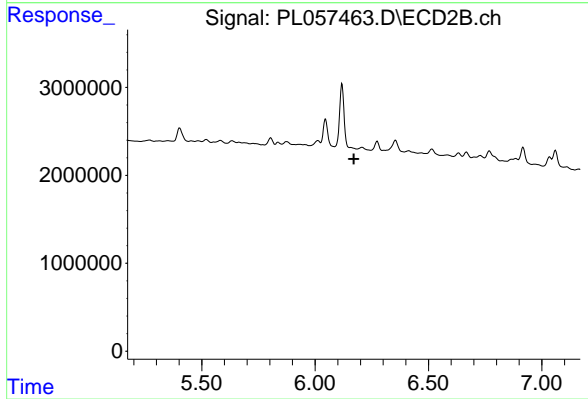
Instrument :
 ECD_L
 ClientSampleId :



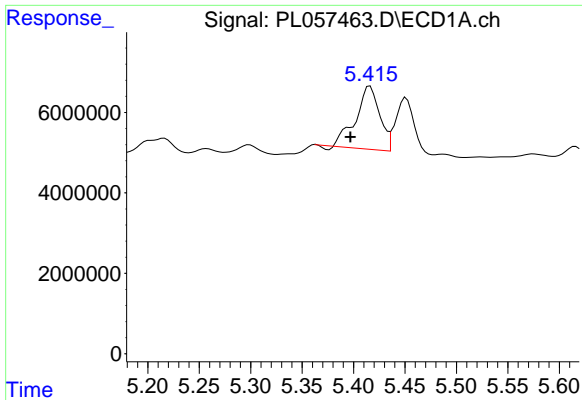
#5 Aldrin
 R.T.: 5.402 min
 Delta R.T.: -0.029 min
 Response: 1685000
 Conc: 0.55 ng/ml



#9 Endosulfan I
 R.T.: 5.524 min
 Delta R.T.: 0.015 min
 Response: 83278
 Conc: 0.01 ng/ml



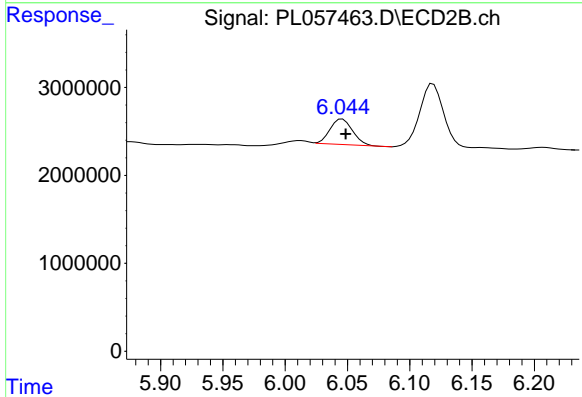
#9 Endosulfan I
 R.T.: 0.000 min
 Exp R.T. : 6.170 min
 Response: 0
 Conc: N.D.



#10 gamma-Chlordane

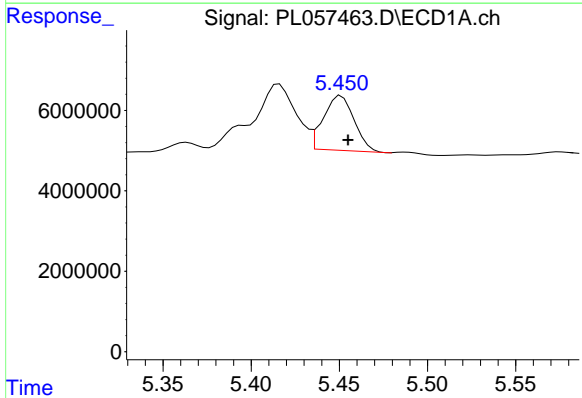
R.T.: 5.416 min
 Delta R.T.: 0.019 min
 Response: 25271027
 Conc: 1.94 ng/ml

Instrument :
 ECD_L
 ClientSampleId :



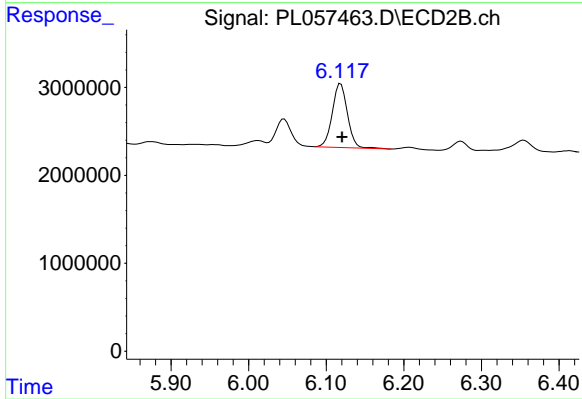
#10 gamma-Chlordane

R.T.: 6.046 min
 Delta R.T.: -0.003 min
 Response: 3675865
 Conc: 1.19 ng/ml



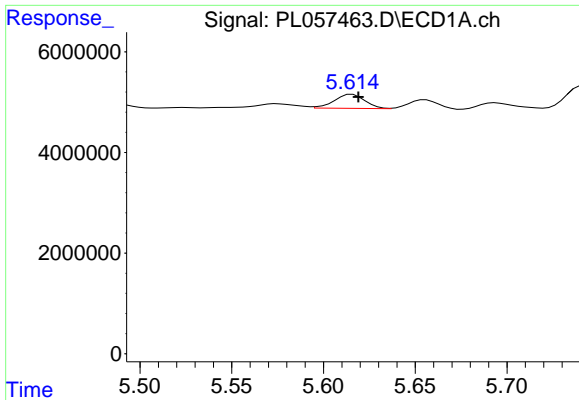
#11 alpha-Chlordane

R.T.: 5.451 min
 Delta R.T.: -0.004 min
 Response: 16528973
 Conc: 1.28 ng/ml



#11 alpha-Chlordane

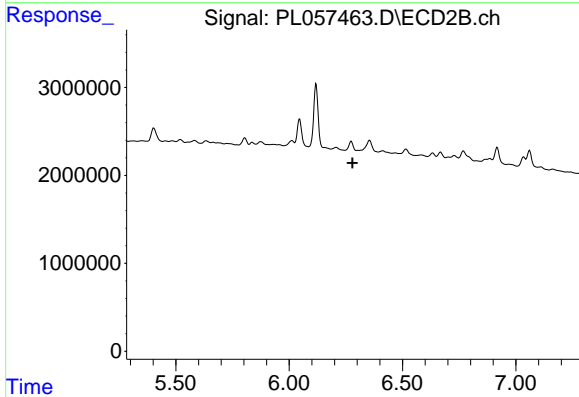
R.T.: 6.119 min
 Delta R.T.: -0.002 min
 Response: 9866224
 Conc: 3.17 ng/ml



#12 4,4'-DDE

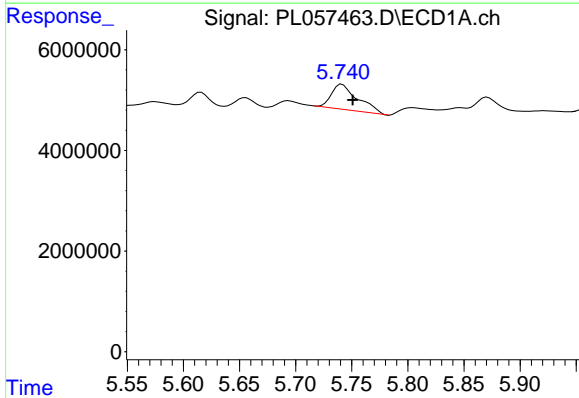
R.T.: 5.616 min
 Delta R.T.: -0.003 min
 Response: 3220173
 Conc: 0.26 ng/ml

Instrument :
 ECD_L
 ClientSampled :



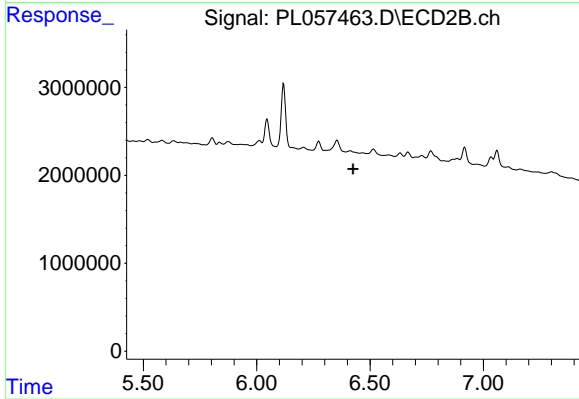
#12 4,4'-DDE

R.T.: 0.000 min
 Exp R.T. : 6.280 min
 Response: 0
 Conc: N.D.



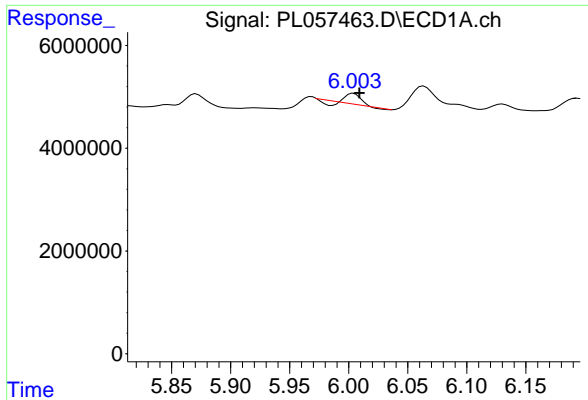
#13 Dieldrin

R.T.: 5.741 min
 Delta R.T.: -0.010 min
 Response: 8223106
 Conc: 0.65 ng/ml



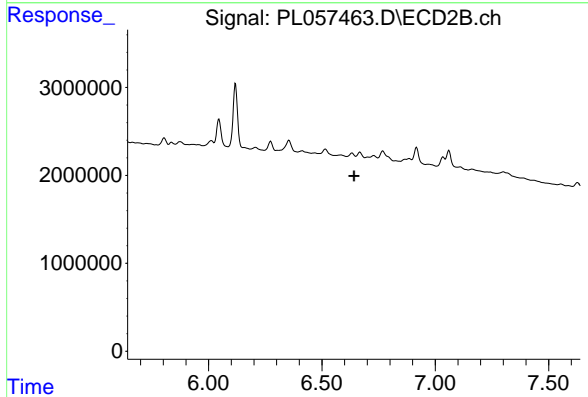
#13 Dieldrin

R.T.: 0.000 min
 Exp R.T. : 6.425 min
 Response: 0
 Conc: N.D.

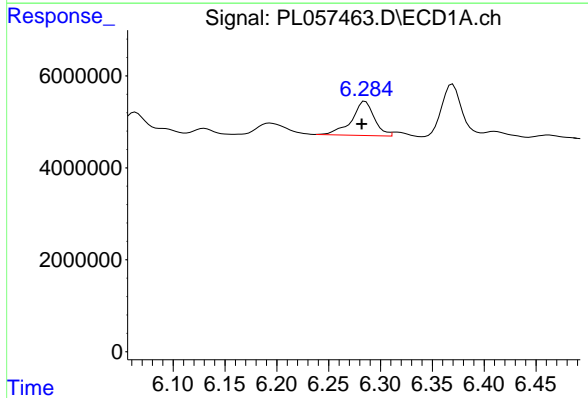


#14 Endrin
 R.T.: 6.004 min
 Delta R.T.: -0.005 min
 Response: 1271765
 Conc: 0.11 ng/ml

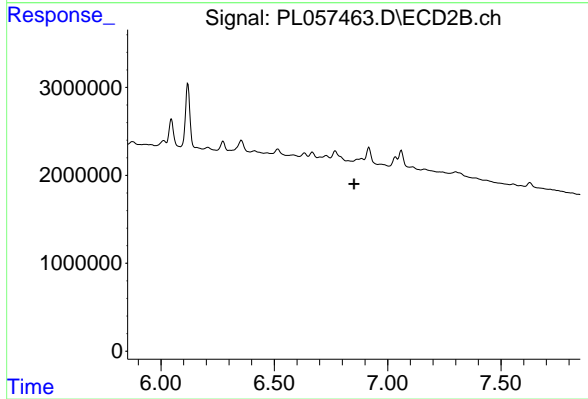
Instrument :
 ECD_L
 ClientSampleId :



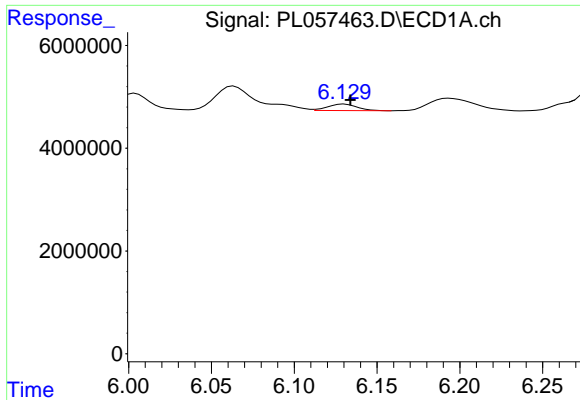
#14 Endrin
 R.T.: 0.000 min
 Exp R.T. : 6.642 min
 Response: 0
 Conc: N.D.



#15 Endosulfan II
 R.T.: 6.285 min
 Delta R.T.: 0.003 min
 Response: 11268889
 Conc: 1.04 ng/ml

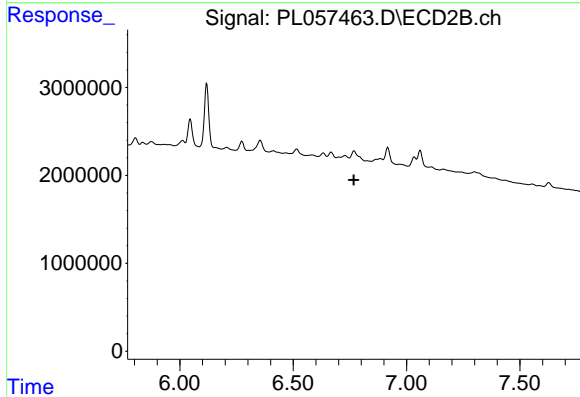


#15 Endosulfan II
 R.T.: 0.000 min
 Exp R.T. : 6.852 min
 Response: 0
 Conc: N.D.

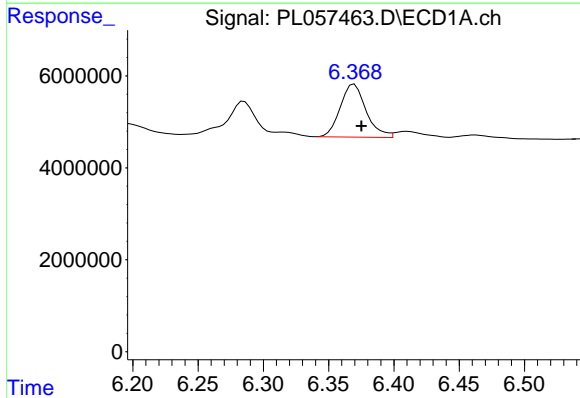


#16 4,4'-DDD
 R.T.: 6.130 min
 Delta R.T.: -0.004 min
 Response: 1558753
 Conc: 0.16 ng/ml

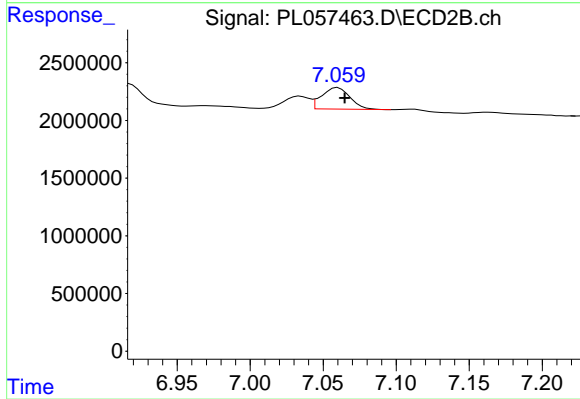
Instrument :
 ECD_L
 ClientSampled :



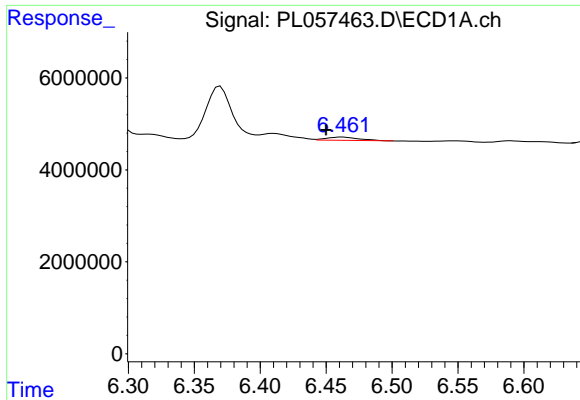
#16 4,4'-DDD
 R.T.: 0.000 min
 Exp R.T. : 6.768 min
 Response: 0
 Conc: N.D.



#17 4,4'-DDT
 R.T.: 6.370 min
 Delta R.T.: -0.005 min
 Response: 15848476
 Conc: 1.59 ng/ml

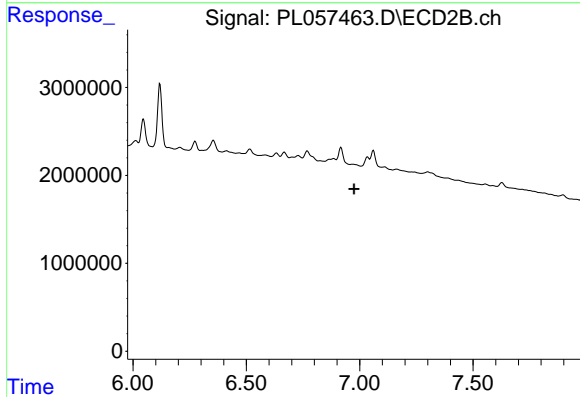


#17 4,4'-DDT
 R.T.: 7.060 min
 Delta R.T.: -0.005 min
 Response: 2529364
 Conc: 1.11 ng/ml

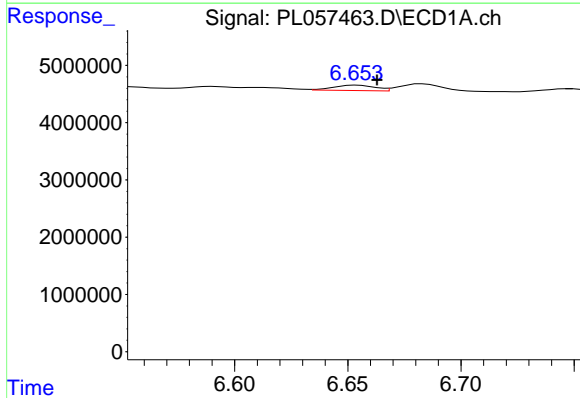


#18 Endrin aldehyde
 R.T.: 6.463 min
 Delta R.T.: 0.013 min
 Response: 1094988
 Conc: 0.12 ng/ml

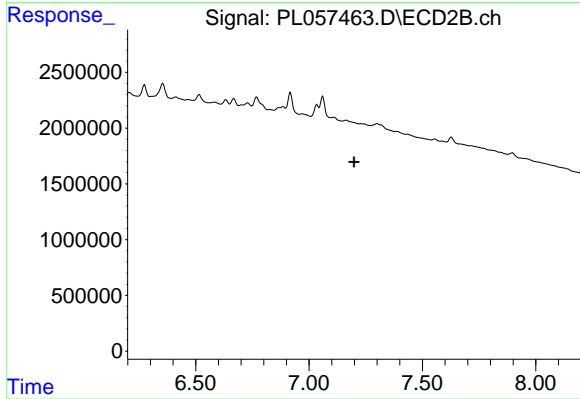
Instrument :
 ECD_L
 ClientSampled :



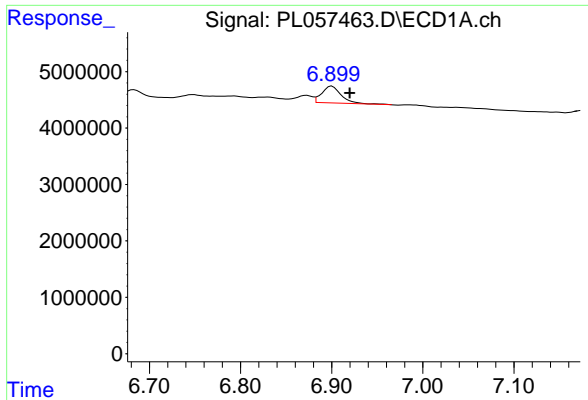
#18 Endrin aldehyde
 R.T.: 0.000 min
 Exp R.T. : 6.976 min
 Response: 0
 Conc: N.D.



#19 Endosulfan Sulfate
 R.T.: 6.654 min
 Delta R.T.: -0.009 min
 Response: 1227447
 Conc: 0.12 ng/ml

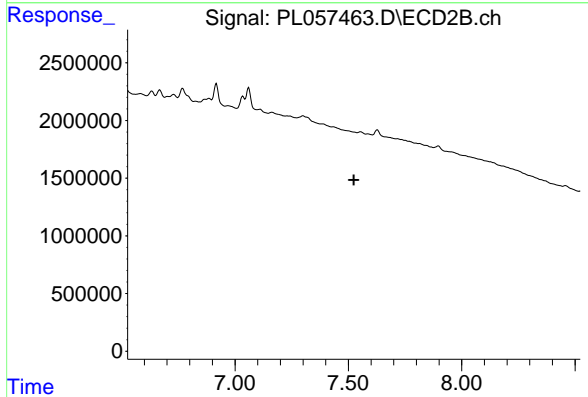


#19 Endosulfan Sulfate
 R.T.: 0.000 min
 Exp R.T. : 7.199 min
 Response: 0
 Conc: N.D.

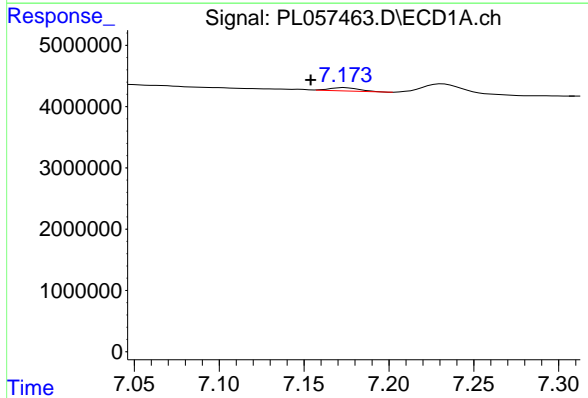


#20 Methoxychlor
 R.T.: 6.900 min
 Delta R.T.: -0.020 min
 Response: 4235324
 Conc: 0.79 ng/ml

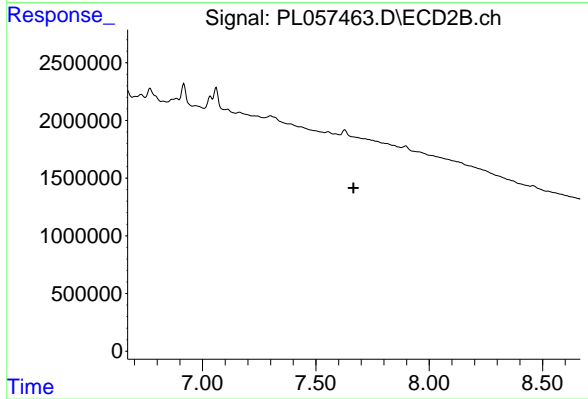
Instrument :
 ECD_L
 ClientSampled :



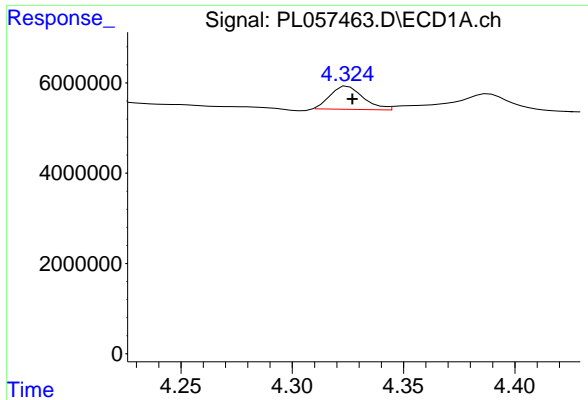
#20 Methoxychlor
 R.T.: 0.000 min
 Exp R.T. : 7.524 min
 Response: 0
 Conc: N.D.



#21 Endrin ketone
 R.T.: 7.174 min
 Delta R.T.: 0.020 min
 Response: 496840
 Conc: 0.04 ng/ml

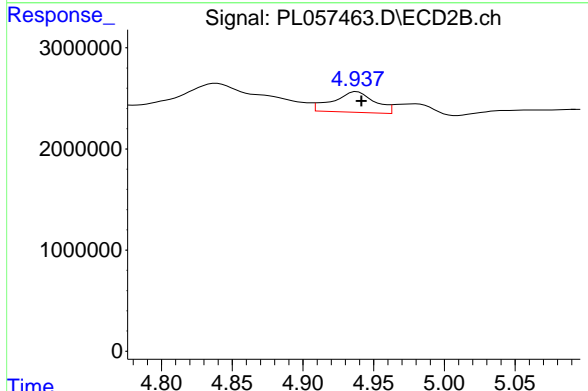


#21 Endrin ketone
 R.T.: 0.000 min
 Exp R.T. : 7.666 min
 Response: 0
 Conc: N.D.

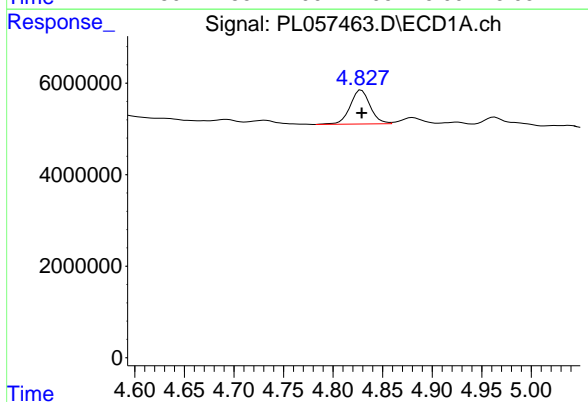


#23 Chlordane-1
 R.T.: 4.325 min
 Delta R.T.: -0.002 min
 Response: 5318434
 Conc: 16.39 ng/ml

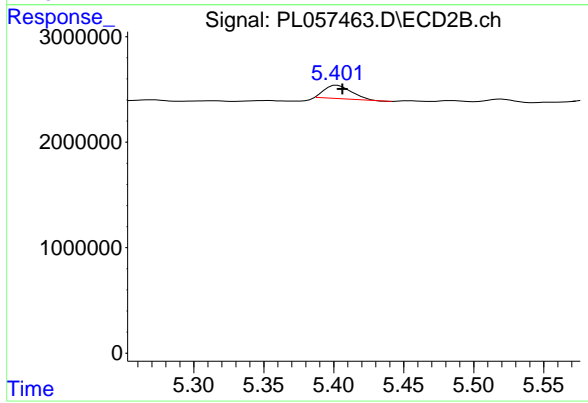
Instrument :
 ECD_L
 ClientSampleId :



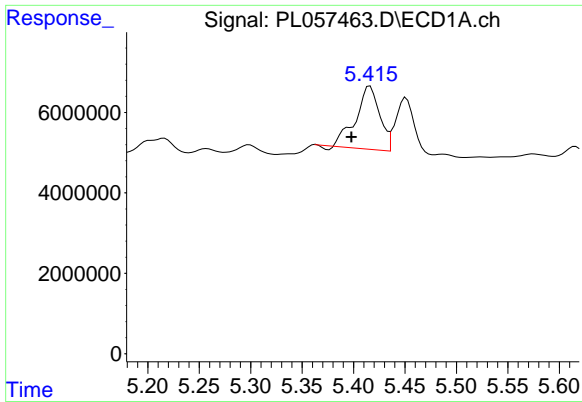
#23 Chlordane-1
 R.T.: 4.938 min
 Delta R.T.: -0.003 min
 Response: 4183242
 Conc: 50.34 ng/ml



#24 Chlordane-2
 R.T.: 4.829 min
 Delta R.T.: 0.000 min
 Response: 10423754
 Conc: 28.69 ng/ml



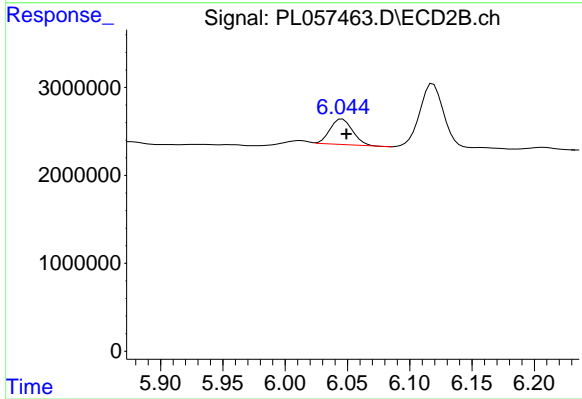
#24 Chlordane-2
 R.T.: 5.402 min
 Delta R.T.: -0.004 min
 Response: 1685000
 Conc: 17.88 ng/ml



#25 Chlordane-3

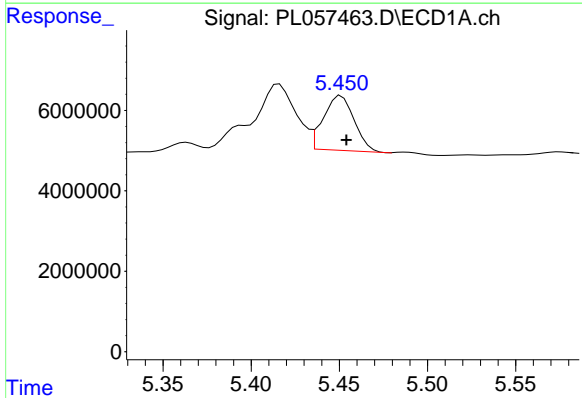
R.T.: 5.416 min
 Delta R.T.: 0.018 min
 Response: 25271027
 Conc: 22.41 ng/ml

Instrument :
 ECD_L
 ClientSampleId :



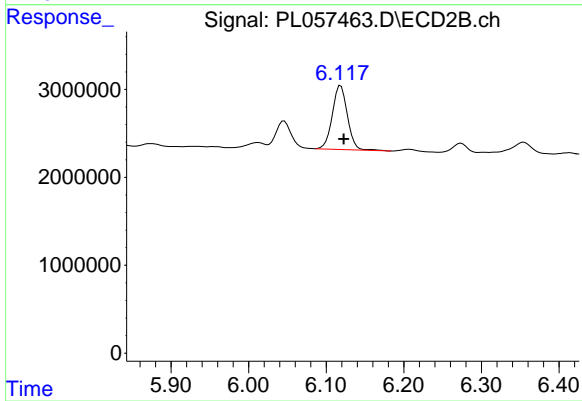
#25 Chlordane-3

R.T.: 6.046 min
 Delta R.T.: -0.003 min
 Response: 3675865
 Conc: 9.69 ng/ml



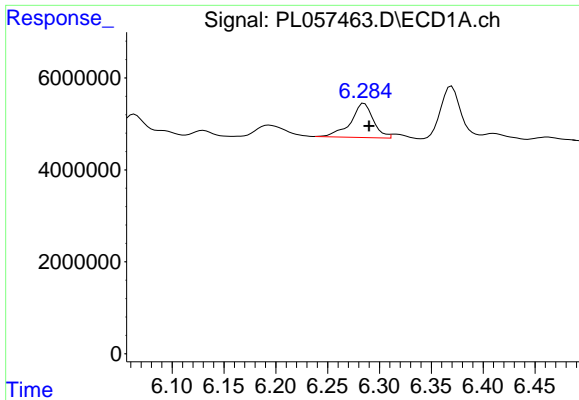
#26 Chlordane-4

R.T.: 5.451 min
 Delta R.T.: -0.003 min
 Response: 16528973
 Conc: 17.24 ng/ml



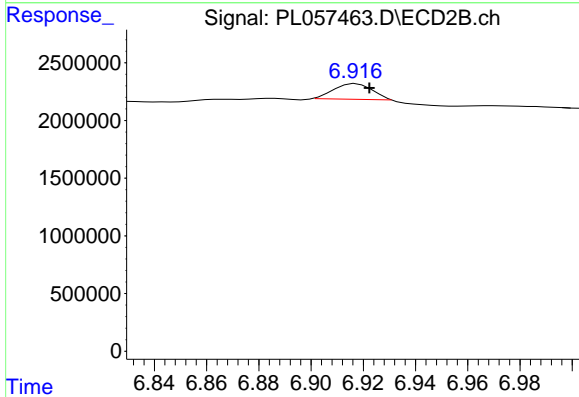
#26 Chlordane-4

R.T.: 6.119 min
 Delta R.T.: -0.004 min
 Response: 9866224
 Conc: 21.56 ng/ml

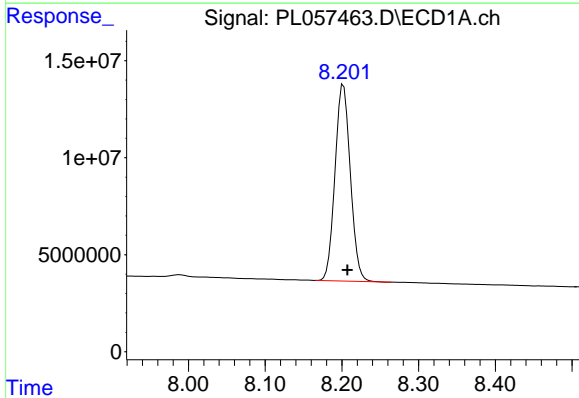


#27 Chlordane-5
 R.T.: 6.285 min
 Delta R.T.: -0.005 min
 Response: 11268889
 Conc: 30.97 ng/ml

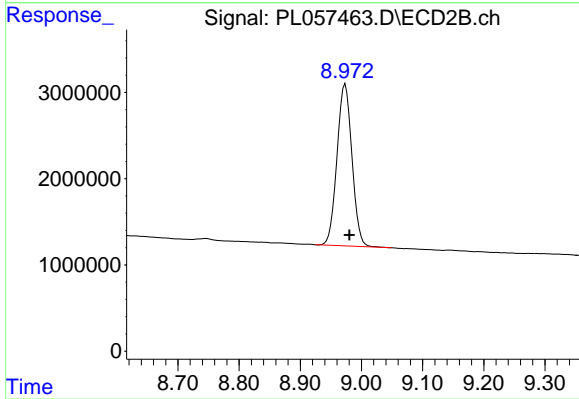
Instrument :
 ECD_L
 ClientSampleId :



#27 Chlordane-5
 R.T.: 6.917 min
 Delta R.T.: -0.005 min
 Response: 1354310
 Conc: 16.90 ng/ml



#28 Decachlorobiphenyl
 R.T.: 8.202 min
 Delta R.T.: -0.005 min
 Response: 140696991
 Conc: 13.30 ng/ml



#28 Decachlorobiphenyl
 R.T.: 8.974 min
 Delta R.T.: -0.007 min
 Response: 31841010
 Conc: 14.36 ng/ml