

Data Path : Z:\pestpcbsrv\HPCHEM1\ECD_L\Data\PL031822\
 Data File : PL073463.D
 Signal(s) : Signal #1: ECD1A.ch Signal #2: ECD2B.ch
 Acq On : 18 Mar 2022 12:38
 Operator : AR\AJ
 Sample : PB143233BL
 Misc :
 ALS Vial : 12 Sample Multiplier: 1

Instrument :
 ECD_L
 ClientSampleId :

Integration File signal 1: autoint1.e
 Integration File signal 2: autoint2.e
 Quant Time: Mar 19 00:48:47 2022
 Quant Method : Z:\pestpcbsrv\HPCHEM1\ECD_L\methods\PL031122.M
 Quant Title : GC Extractables
 QLast Update : Mon Mar 14 04:12:46 2022
 Response via : Initial Calibration
 Integrator: ChemStation

Volume Inj. : 1 µl
 Signal #1 Phase : ZB-MR2 Signal #2 Phase: ZB-MR1
 Signal #1 Info : 30M x 0.32mm x0.2 Signal #2 Info : 30M x 0.32mm x0.5µm

	Compound	RT#1	RT#2	Resp#1	Resp#2	ng/ml	ng/ml

System Monitoring Compounds							
1)	SA Tetrachlo...	4.643	5.491	6494674	36368590	20.278	22.159
28)	SA Decachlor...	10.418	11.333	10750233	37292791	21.141	20.855
Target Compounds							
6)	B beta-BHC	0.000	6.674	0	807442	N.D.	0.775 #
7)	B delta-BHC	0.000	6.956	0	1671085	N.D.	0.776 #
8)	B Heptachlo...	0.000	7.927	0	2658060	N.D.	1.331 #
9)	A Endosulfan I	0.000	8.330	0	1843416	N.D.	1.010 #
10)	B gamma-Chl...	7.342f	8.197	28840	4107027	0.066	2.011 #
11)	B alpha-Chl...	7.413f	0.000	12409	0	0.028	N.D. #
12)	B 4,4'-DDE	0.000	8.473	0	119368	N.D.	0.067 #
13)	MA Dieldrin	7.789	0.000	83328	0	0.200	N.D. #
14)	MA Endrin	8.092f	0.000	587310	0	1.514	N.D. #
15)	B Endosulfa...	8.372	0.000	27115	0	0.069	N.D. #
16)	A 4,4'-DDD	0.000	8.978	0	622759	N.D.	0.427 #
18)	B Endrin al...	0.000	9.205	0	75260	N.D.	0.061 #
22)	Mirex	0.000	10.419f	0	442435	N.D.	0.326 #
23)	Chlordane-1	0.000	6.850	0	946455	N.D.	13.855 #
25)	Chlordane-3	7.342f	8.197	28840	4107027	0.706	15.148 #
26)	Chlordane-4	7.413f	0.000	12409	0	0.280	N.D. #
27)	Chlordane-5	8.372	0.000	27115	0	1.656	N.D. #

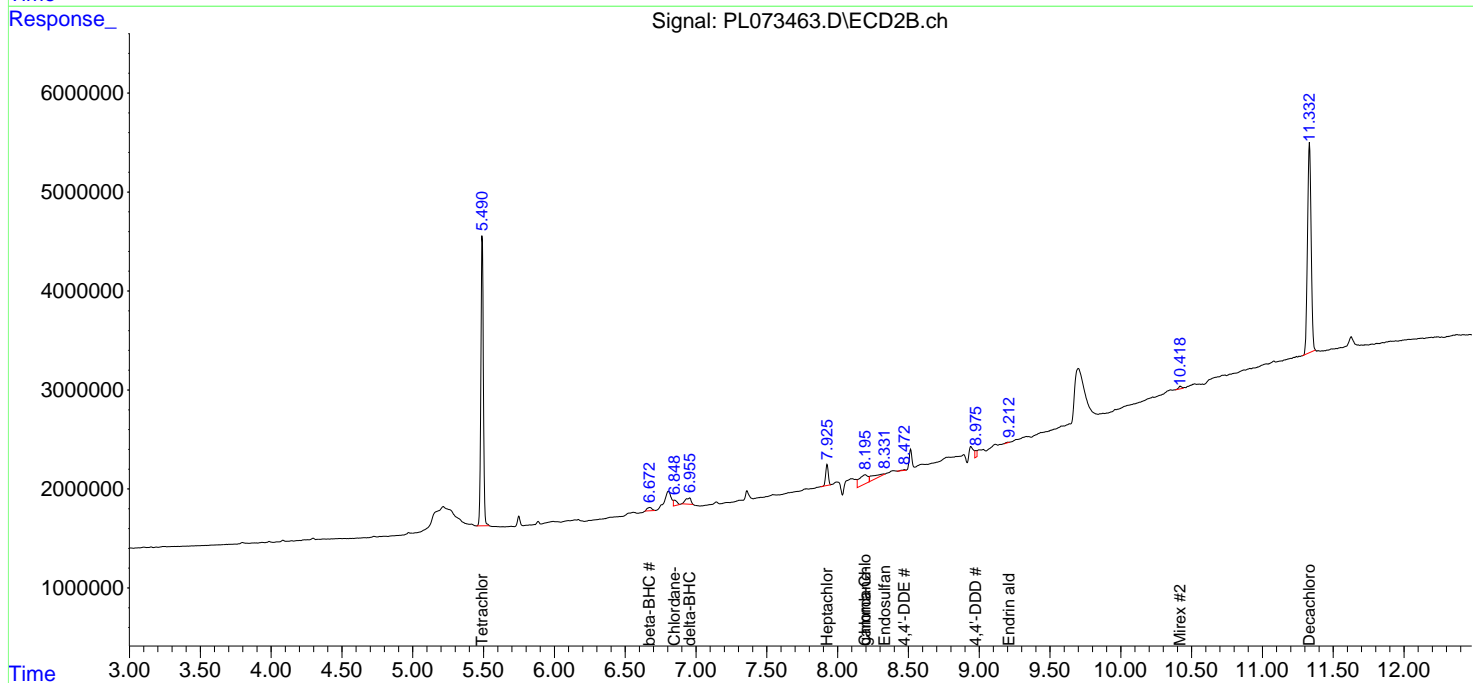
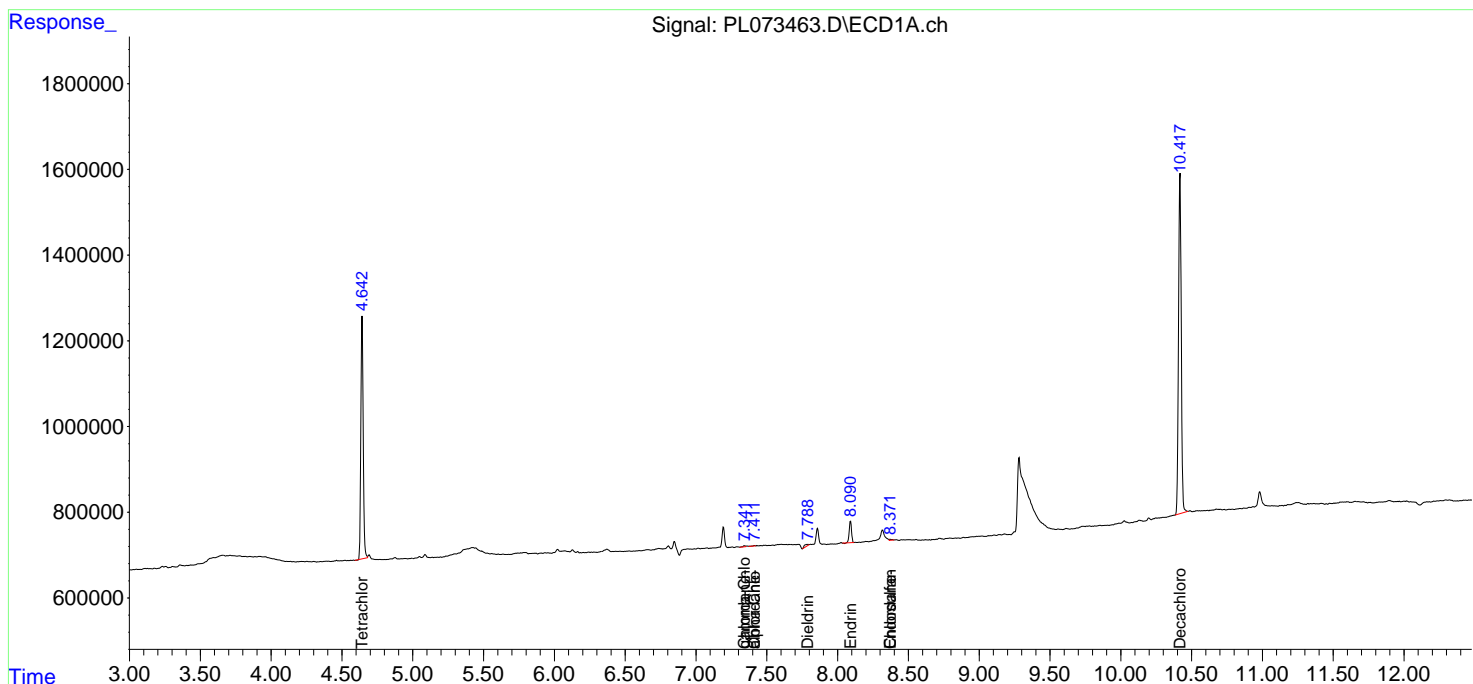
(f)=RT Delta > 1/2 Window (#)=Amounts differ by > 25% (m)=manual int.

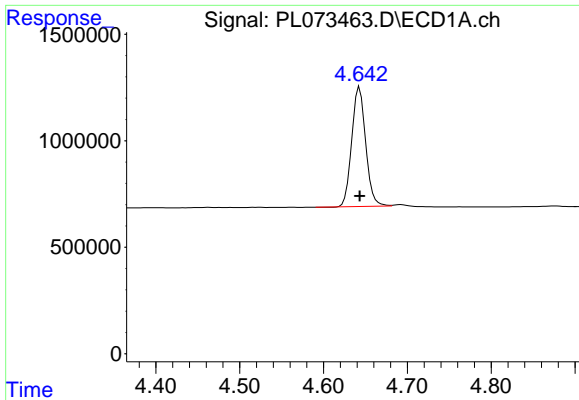
Data Path : Z:\pestpcbsrv\HPCHEM1\ECD_L\Data\PL031822\
 Data File : PL073463.D
 Signal(s) : Signal #1: ECD1A.ch Signal #2: ECD2B.ch
 Acq On : 18 Mar 2022 12:38
 Operator : AR\AJ
 Sample : PB143233BL
 Misc :
 ALS Vial : 12 Sample Multiplier: 1

Instrument :
 ECD_L
 ClientSampleId :

Integration File signal 1: autoint1.e
 Integration File signal 2: autoint2.e
 Quant Time: Mar 19 00:48:47 2022
 Quant Method : Z:\pestpcbsrv\HPCHEM1\ECD_L\methods\PL031122.M
 Quant Title : GC Extractables
 QLast Update : Mon Mar 14 04:12:46 2022
 Response via : Initial Calibration
 Integrator: ChemStation

Volume Inj. : 1 µl
 Signal #1 Phase : ZB-MR2 Signal #2 Phase: ZB-MR1
 Signal #1 Info : 30M x 0.32mm x0.2 Signal #2 Info : 30M x 0.32mm x0.5µm

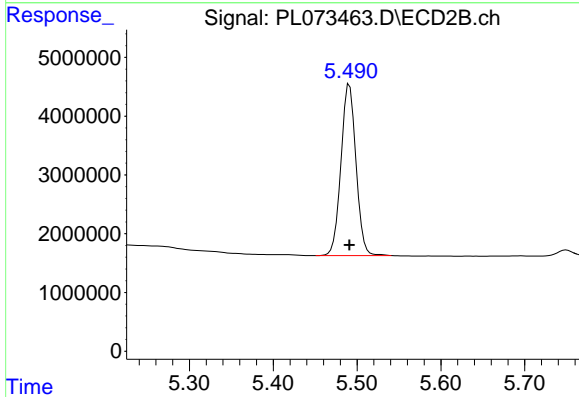




#1 Tetrachloro-m-xylene

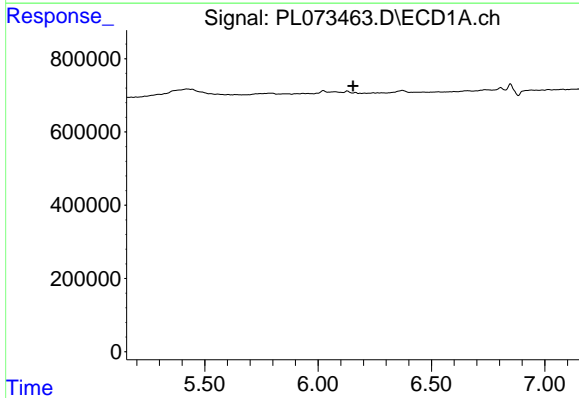
R.T.: 4.643 min
 Delta R.T.: 0.000 min
 Response: 6494674
 Conc: 20.28 ng/ml

Instrument :
 ECD_L
 ClientSampleId :



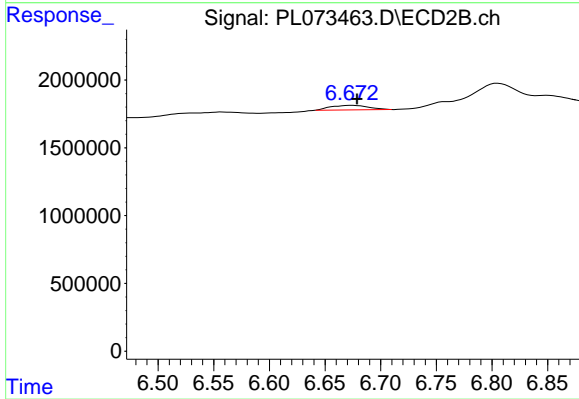
#1 Tetrachloro-m-xylene

R.T.: 5.491 min
 Delta R.T.: 0.000 min
 Response: 36368590
 Conc: 22.16 ng/ml



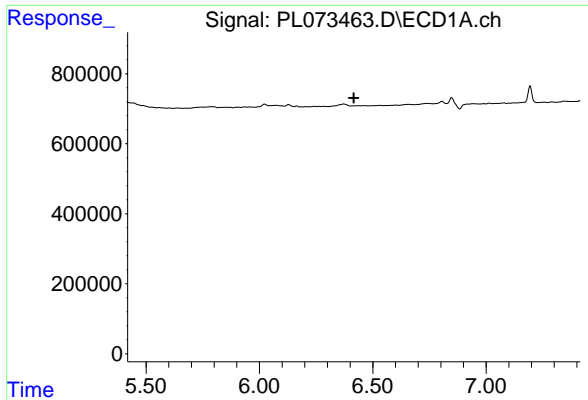
#6 beta-BHC

R.T.: 0.000 min
 Exp R.T. : 6.155 min
 Response: 0
 Conc: N.D.



#6 beta-BHC

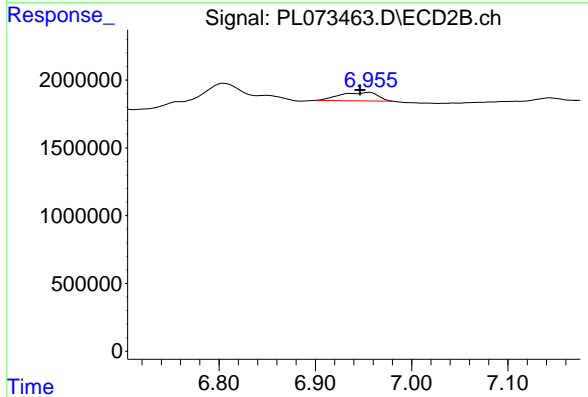
R.T.: 6.674 min
 Delta R.T.: -0.005 min
 Response: 807442
 Conc: 0.77 ng/ml



#7 delta-BHC

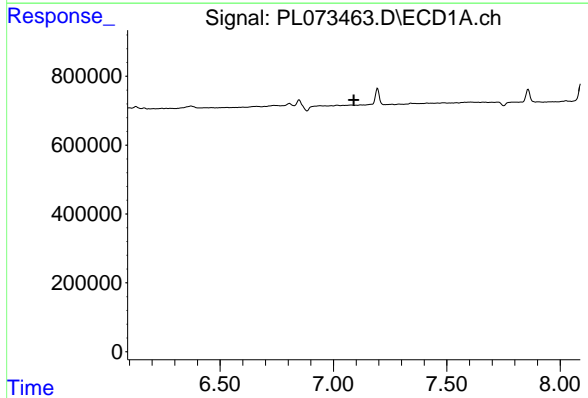
R.T.: 0.000 min
 Exp R.T. : 6.416 min
 Response: 0
 Conc: N.D.

Instrument :
 ECD_L
 ClientSampleId :



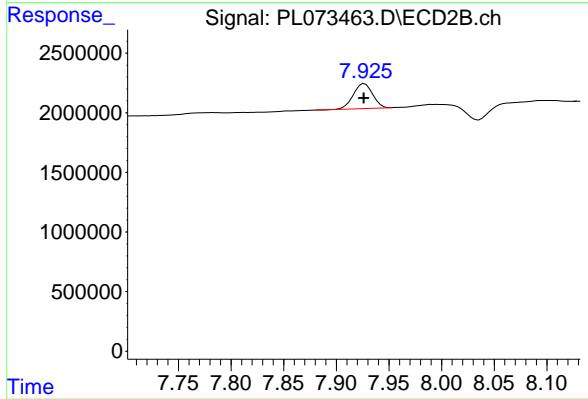
#7 delta-BHC

R.T.: 6.956 min
 Delta R.T.: 0.010 min
 Response: 1671085
 Conc: 0.78 ng/ml



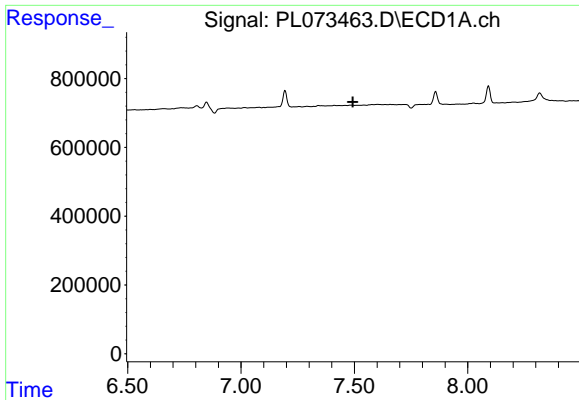
#8 Heptachlor epoxide

R.T.: 0.000 min
 Exp R.T. : 7.090 min
 Response: 0
 Conc: N.D.



#8 Heptachlor epoxide

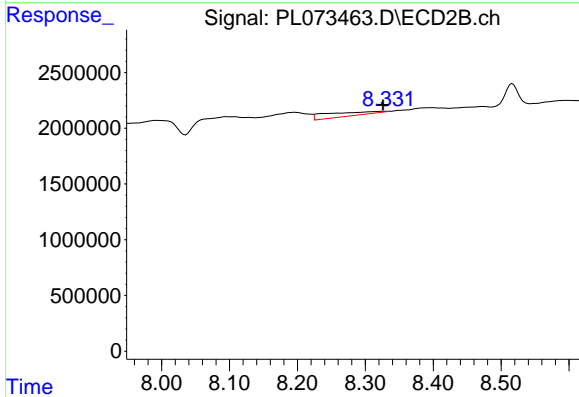
R.T.: 7.927 min
 Delta R.T.: 0.000 min
 Response: 2658060
 Conc: 1.33 ng/ml



#9 Endosulfan I

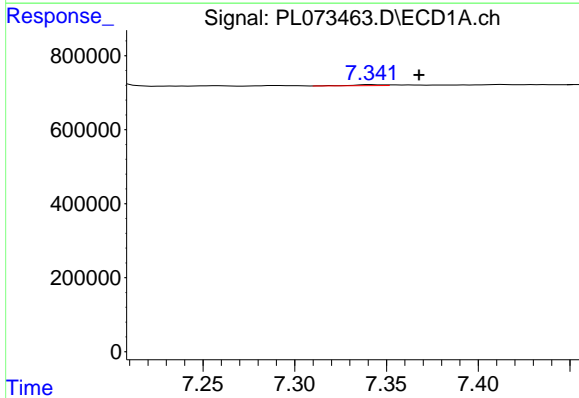
R.T.: 0.000 min
 Exp R.T.: 7.493 min
 Response: 0
 Conc: N.D.

Instrument :
 ECD_L
 ClientSampleId :



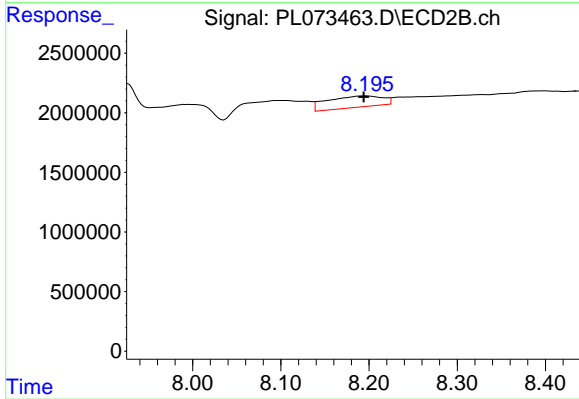
#9 Endosulfan I

R.T.: 8.330 min
 Delta R.T.: 0.004 min
 Response: 1843416
 Conc: 1.01 ng/ml



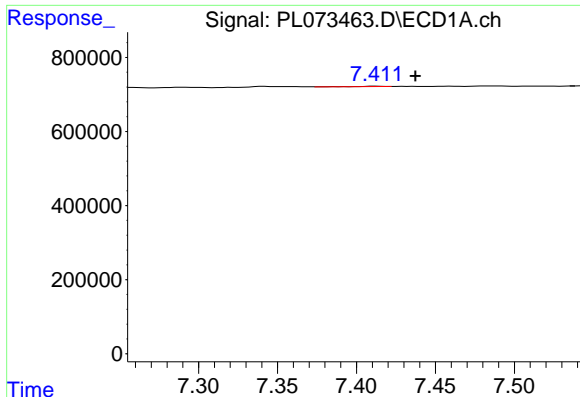
#10 gamma-Chlordane

R.T.: 7.342 min
 Delta R.T.: -0.026 min
 Response: 28840
 Conc: 0.07 ng/ml



#10 gamma-Chlordane

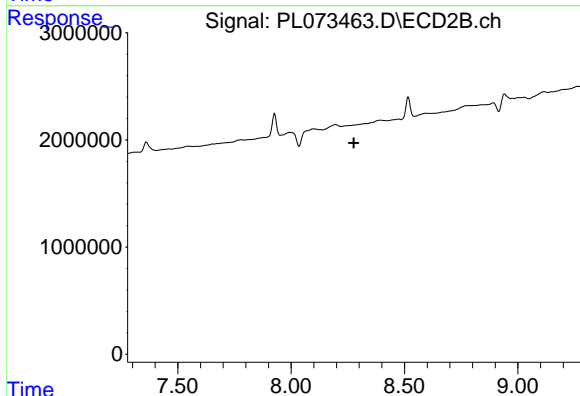
R.T.: 8.197 min
 Delta R.T.: 0.003 min
 Response: 4107027
 Conc: 2.01 ng/ml



#11 alpha-Chlordane

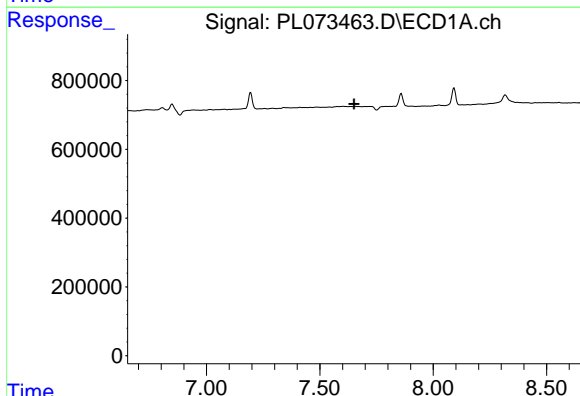
R.T.: 7.413 min
 Delta R.T.: -0.025 min
 Response: 12409
 Conc: 0.03 ng/ml

Instrument :
 ECD_L
 ClientSampleId :



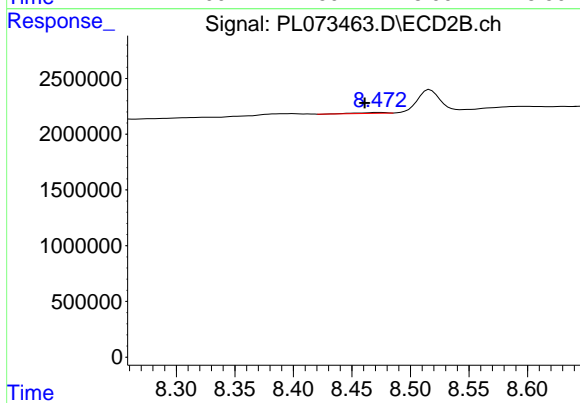
#11 alpha-Chlordane

R.T.: 0.000 min
 Exp R.T. : 8.277 min
 Response: 0
 Conc: N.D.



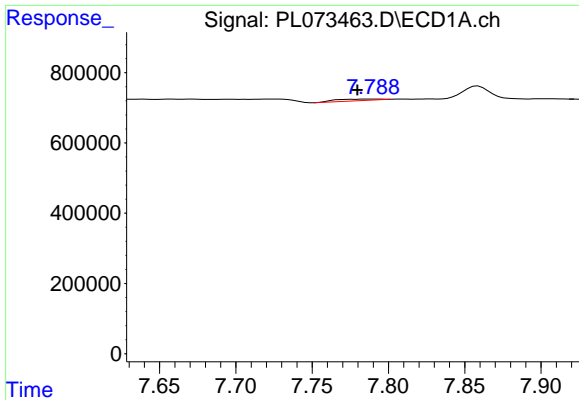
#12 4,4'-DDE

R.T.: 0.000 min
 Exp R.T. : 7.651 min
 Response: 0
 Conc: N.D.



#12 4,4'-DDE

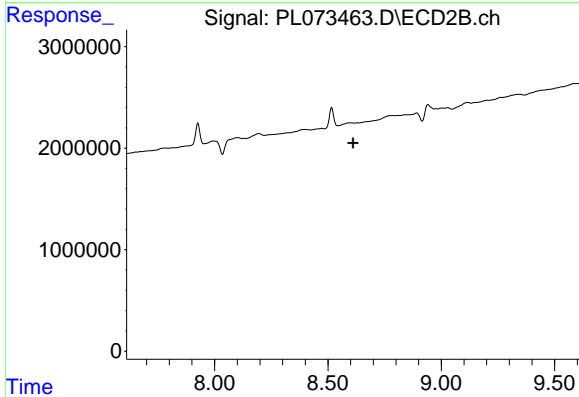
R.T.: 8.473 min
 Delta R.T.: 0.013 min
 Response: 119368
 Conc: 0.07 ng/ml



#13 Dieldrin

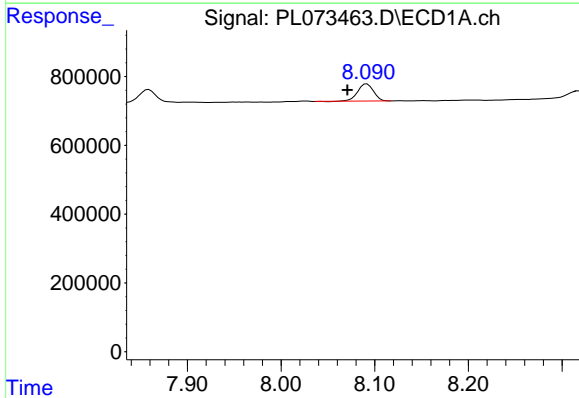
R.T.: 7.789 min
 Delta R.T.: 0.010 min
 Response: 83328
 Conc: 0.20 ng/ml

Instrument :
 ECD_L
 ClientSampleId :



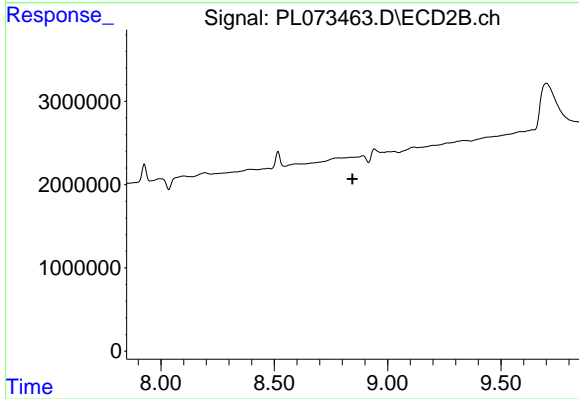
#13 Dieldrin

R.T.: 0.000 min
 Exp R.T. : 8.611 min
 Response: 0
 Conc: N.D.



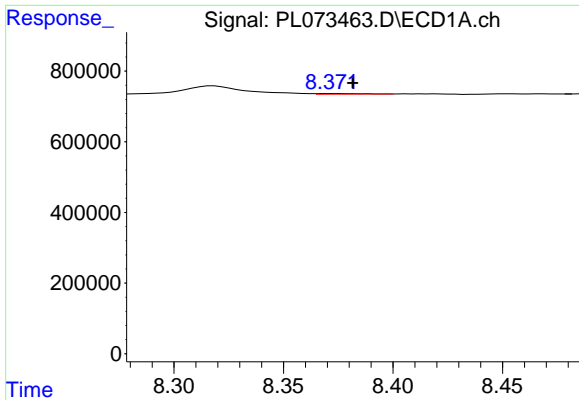
#14 Endrin

R.T.: 8.092 min
 Delta R.T.: 0.021 min
 Response: 587310
 Conc: 1.51 ng/ml



#14 Endrin

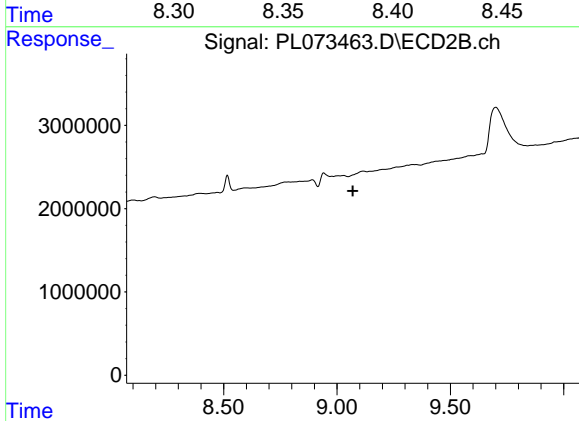
R.T.: 0.000 min
 Exp R.T. : 8.845 min
 Response: 0
 Conc: N.D.



#15 Endosulfan II

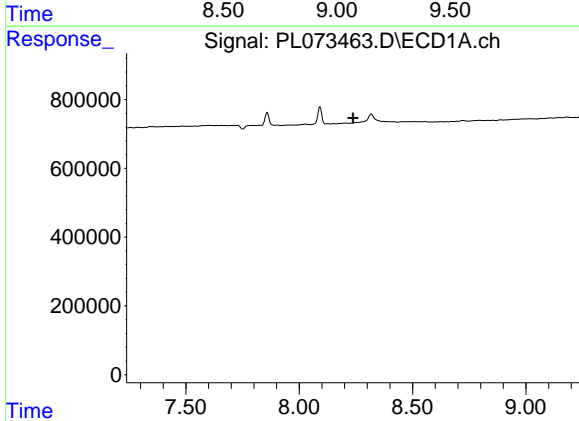
R.T.: 8.372 min
 Delta R.T.: -0.009 min
 Response: 27115
 Conc: 0.07 ng/ml

Instrument :
 ECD_L
 ClientSampleId :



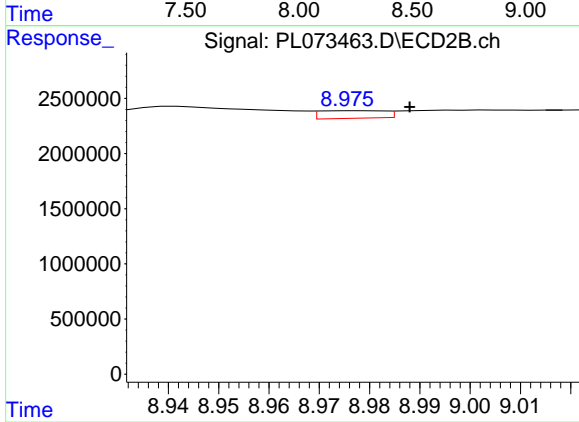
#15 Endosulfan II

R.T.: 0.000 min
 Exp R.T. : 9.069 min
 Response: 0
 Conc: N.D.



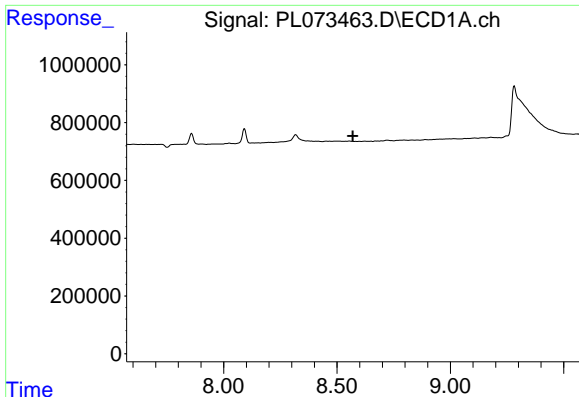
#16 4,4'-DDD

R.T.: 0.000 min
 Exp R.T. : 8.237 min
 Response: 0
 Conc: N.D.



#16 4,4'-DDD

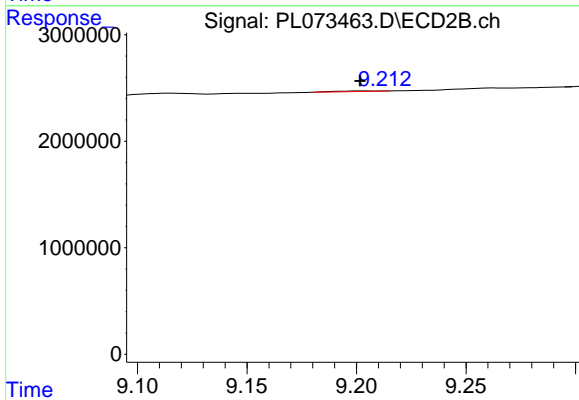
R.T.: 8.978 min
 Delta R.T.: -0.010 min
 Response: 622759
 Conc: 0.43 ng/ml



#18 Endrin aldehyde

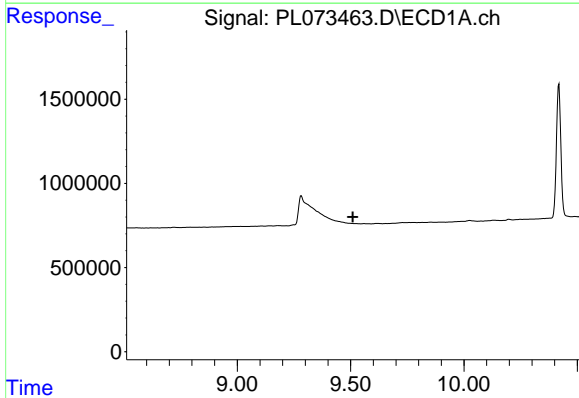
R.T.: 0.000 min
 Exp R.T.: 8.570 min
 Response: 0
 Conc: N.D.

Instrument :
 ECD_L
 ClientSampleId :



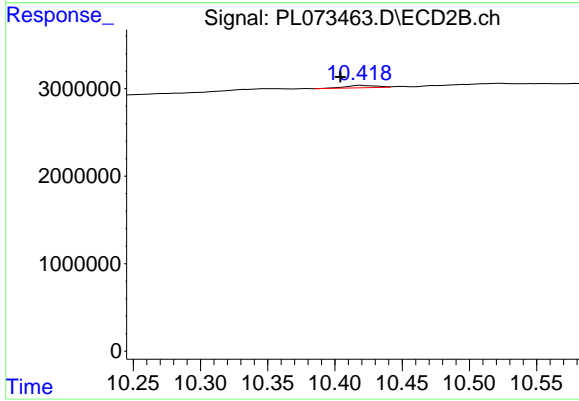
#18 Endrin aldehyde

R.T.: 9.205 min
 Delta R.T.: 0.003 min
 Response: 75260
 Conc: 0.06 ng/ml



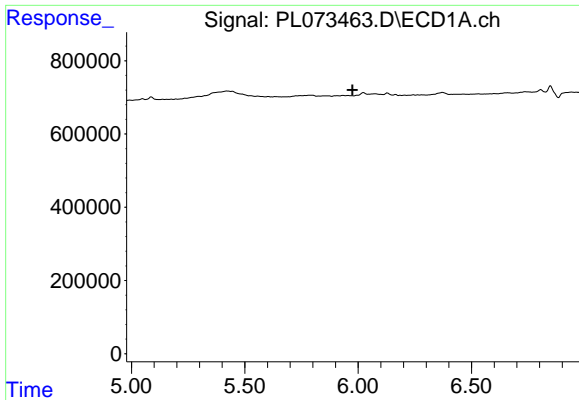
#22 Mirex

R.T.: 0.000 min
 Exp R.T.: 9.509 min
 Response: 0
 Conc: N.D.



#22 Mirex

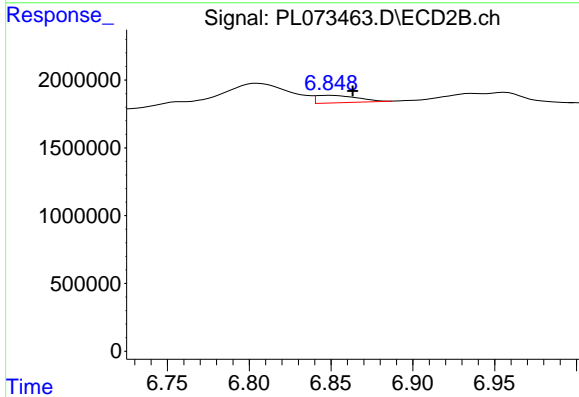
R.T.: 10.419 min
 Delta R.T.: 0.015 min
 Response: 442435
 Conc: 0.33 ng/ml



#23 Chlordane-1

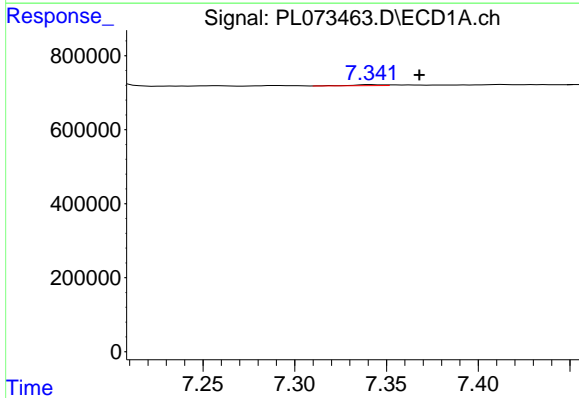
R.T.: 0.000 min
 Exp R.T.: 5.976 min
 Response: 0
 Conc: N.D.

Instrument :
 ECD_L
 ClientSampleId :



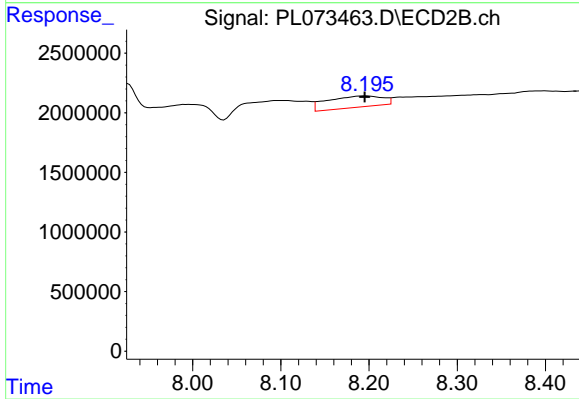
#23 Chlordane-1

R.T.: 6.850 min
 Delta R.T.: -0.013 min
 Response: 946455
 Conc: 13.85 ng/ml



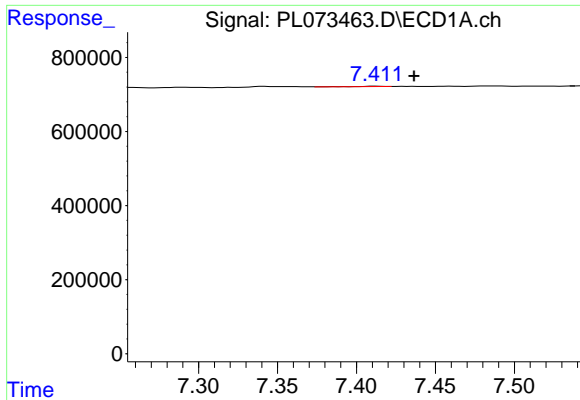
#25 Chlordane-3

R.T.: 7.342 min
 Delta R.T.: -0.026 min
 Response: 28840
 Conc: 0.71 ng/ml



#25 Chlordane-3

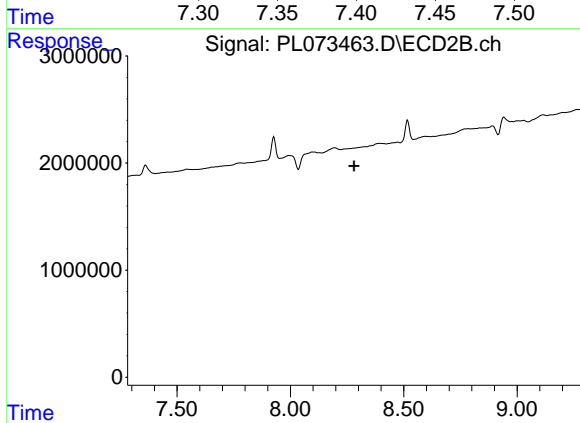
R.T.: 8.197 min
 Delta R.T.: 0.001 min
 Response: 4107027
 Conc: 15.15 ng/ml



#26 Chlordane-4

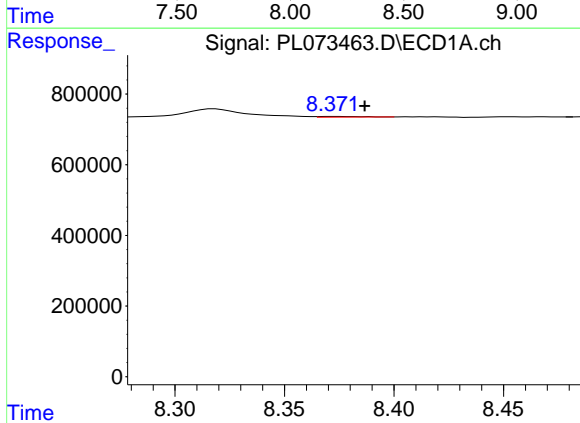
R.T.: 7.413 min
 Delta R.T.: -0.024 min
 Response: 12409
 Conc: 0.28 ng/ml

Instrument :
 ECD_L
 ClientSampleId :



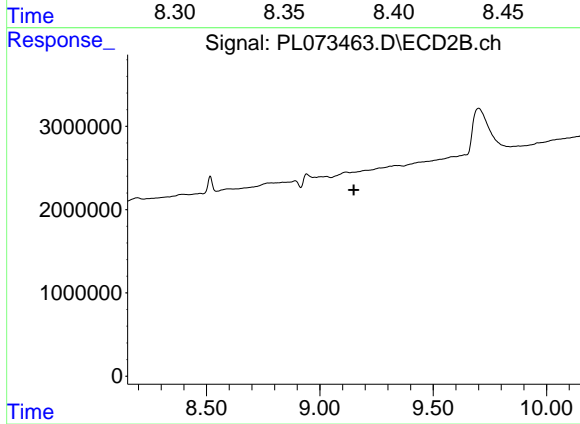
#26 Chlordane-4

R.T.: 0.000 min
 Exp R.T. : 8.281 min
 Response: 0
 Conc: N.D.



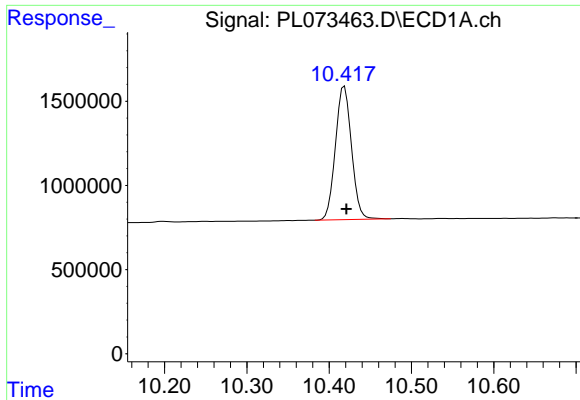
#27 Chlordane-5

R.T.: 8.372 min
 Delta R.T.: -0.014 min
 Response: 27115
 Conc: 1.66 ng/ml



#27 Chlordane-5

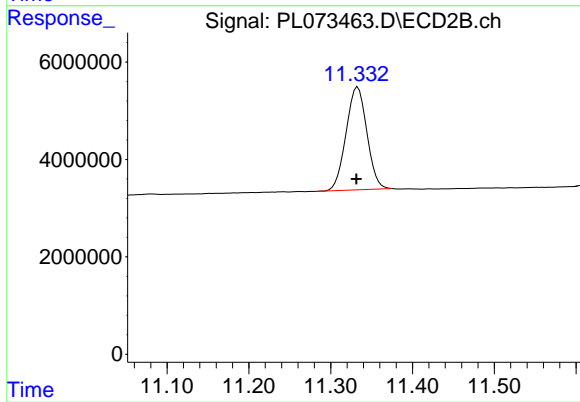
R.T.: 0.000 min
 Exp R.T. : 9.149 min
 Response: 0
 Conc: N.D.



#28 Decachlorobiphenyl

R.T.: 10.418 min
Delta R.T.: -0.003 min
Response: 10750233
Conc: 21.14 ng/ml

Instrument :
ECD_L
ClientSampleId :



#28 Decachlorobiphenyl

R.T.: 11.333 min
Delta R.T.: 0.002 min
Response: 37292791
Conc: 20.86 ng/ml