

Data Path : Z:\pestpcbsrv\HPCHEM1\ECD\_L\Data\PL031822\  
 Data File : PL073489.D  
 Signal(s) : Signal #1: ECD1A.ch Signal #2: ECD2B.ch  
 Acq On : 18 Mar 2022 20:21  
 Operator : AR\AJ  
 Sample : PSTDCCC050  
 Misc :  
 ALS Vial : 4 Sample Multiplier: 1

Instrument :  
 ECD\_L  
 ClientSampleId :

Integration File signal 1: autoint1.e  
 Integration File signal 2: autoint2.e  
 Quant Time: Mar 19 01:17:49 2022  
 Quant Method : Z:\pestpcbsrv\HPCHEM1\ECD\_L\methods\PL031122.M  
 Quant Title : GC Extractables  
 QLast Update : Mon Mar 14 04:12:46 2022  
 Response via : Initial Calibration  
 Integrator: ChemStation

Volume Inj. : 1 µl  
 Signal #1 Phase : ZB-MR2 Signal #2 Phase: ZB-MR1  
 Signal #1 Info : 30M x 0.32mm x0.2 Signal #2 Info : 30M x 0.32mm x0.5µm

Compound	RT#1	RT#2	Resp#1	Resp#2	ng/ml	ng/ml
System Monitoring Compounds						
1) SA Tetrachlo...	4.642	5.492	14604519	82734747	45.598	50.410
28) SA Decachlor...	10.416	11.332	22489368	80423197	44.227	44.975
Target Compounds						
2) A alpha-BHC	5.350	6.055	19030279	117.9E6	46.167	52.406
3) MA gamma-BHC...	5.774	6.444	19034767	110.6E6	45.632	51.781
4) MA Heptachlor	6.186	7.103	20488904	120.7E6	45.410	51.513
5) MB Aldrin	6.511	7.471	18617965	109.0E6	45.061	52.033
6) B beta-BHC	6.154	6.680	9618731	51010877	46.716	48.937
7) B delta-BHC	6.416	6.947	18544911	109.4E6	46.172	50.779
8) B Heptachlo...	7.088	7.927	19231317	102.7E6	44.622	51.421
9) A Endosulfan I	7.491	8.327	18317736	92477971	44.654	50.662
10) B gamma-Chl...	7.365	8.195	19408714	106.4E6	44.383	52.113
11) B alpha-Chl...	7.435	8.277	19620740	102.0E6	44.398	51.007
12) B 4,4'-DDE	7.649	8.461	15962626	91018985	44.484	50.781
13) MA Dieldrin	7.777	8.612	19134720	92251748	45.928	50.008
14) MA Endrin	8.069	8.846	17518433	75807699	45.150	49.244
15) B Endosulfa...	8.379	9.070	17257052	75434490	44.150	49.116
16) A 4,4'-DDD	8.234	8.989	14274962	74694691	43.958	51.171
17) MA 4,4'-DDT	8.496	9.307	16358573	77728828	43.256	47.554
18) B Endrin al...	8.568	9.203	13972676	53099139	44.183	43.300
19) B Endosulfa...	8.799	9.440	18605015	75669788	44.044	48.012
20) A Methoxychlor	9.092	9.786	10894376	41172598	42.467	45.693
21) B Endrin ke...	9.318	9.928	22090610	79090371	45.154	47.916
22) Mirex	9.506	10.404	20309943	64108012	43.069	47.192
23) Chlordane-1	0.000	6.854	0	1300592	N.D.	19.039 #
24) Chlordane-2	0.000	7.471f	0	109.0E6	N.D.	1516.647 #
25) Chlordane-3	7.365	8.195	19408714	106.4E6	475.306	392.560
26) Chlordane-4	7.435	8.277	19620740	102.0E6	442.698	307.966 #
27) Chlordane-5	8.379	0.000	17257052	0	1053.847	N.D. #

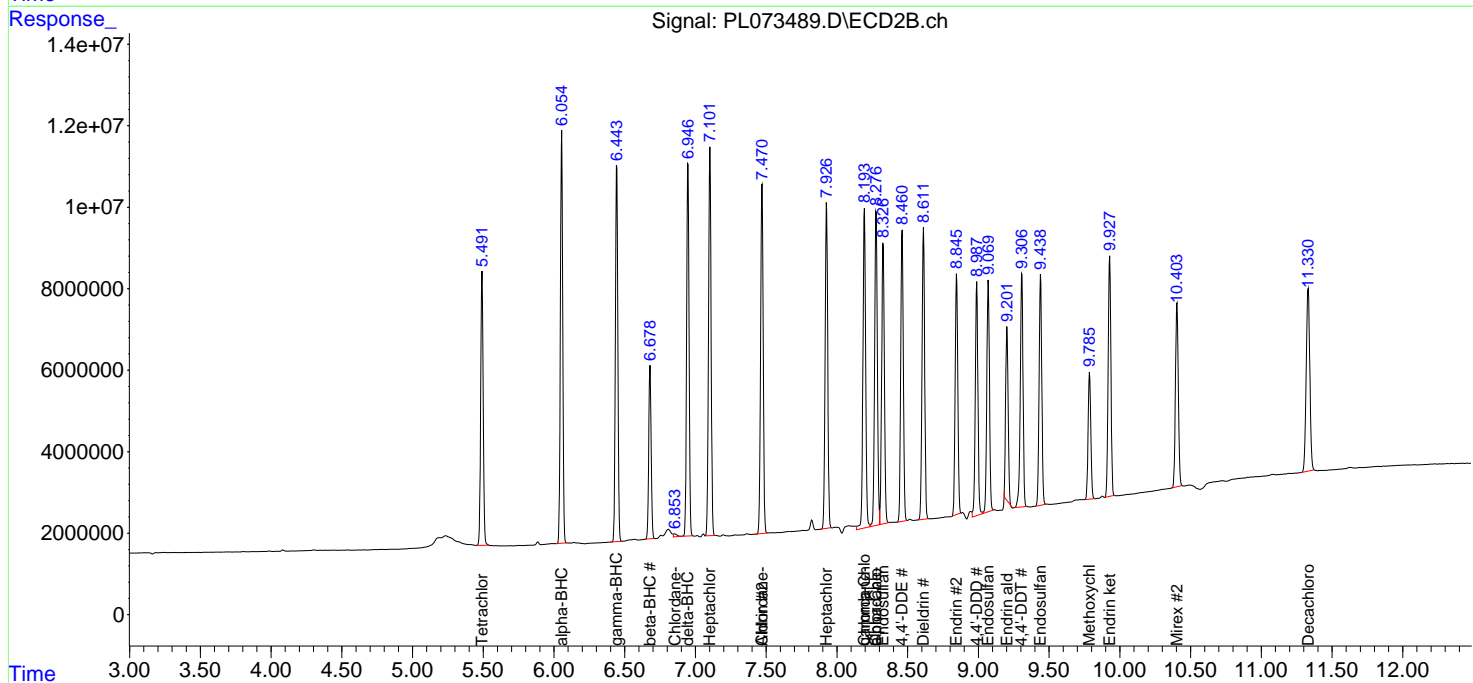
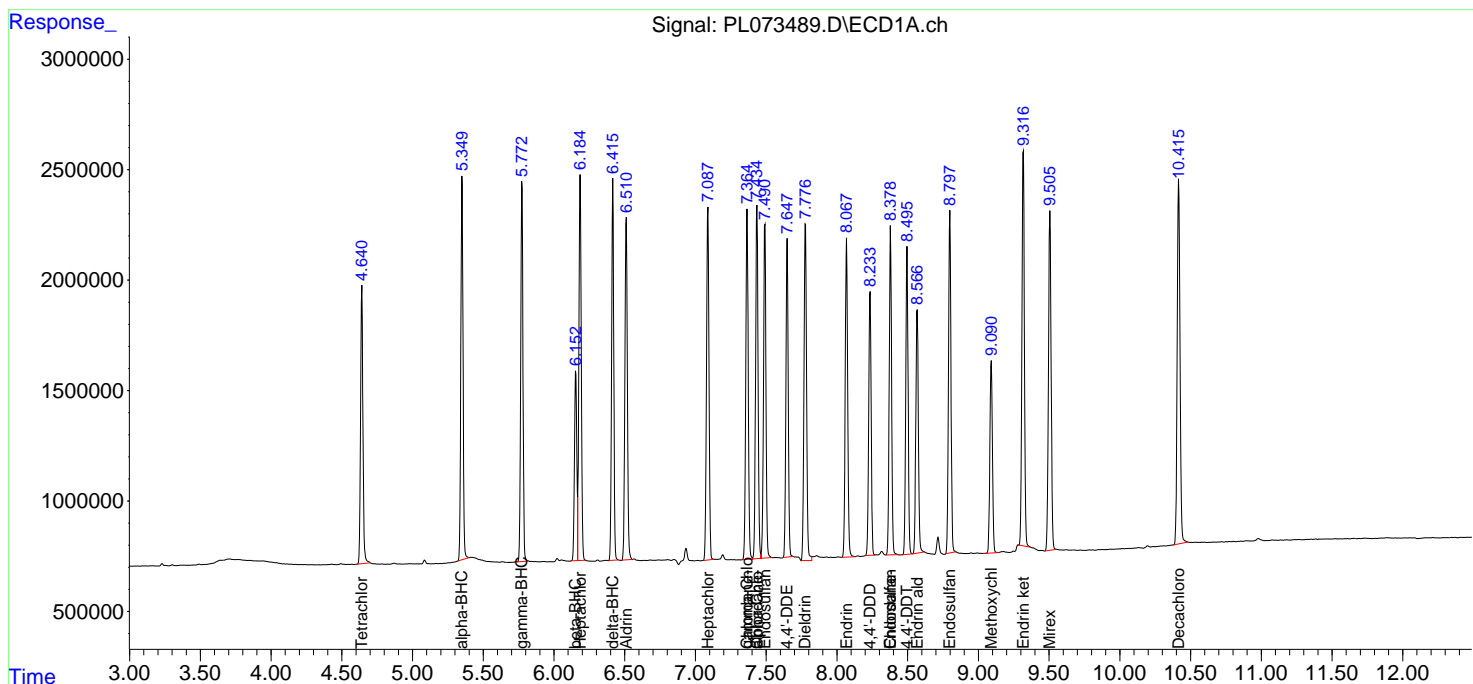
(f)=RT Delta > 1/2 Window (#)=Amounts differ by > 25% (m)=manual int.

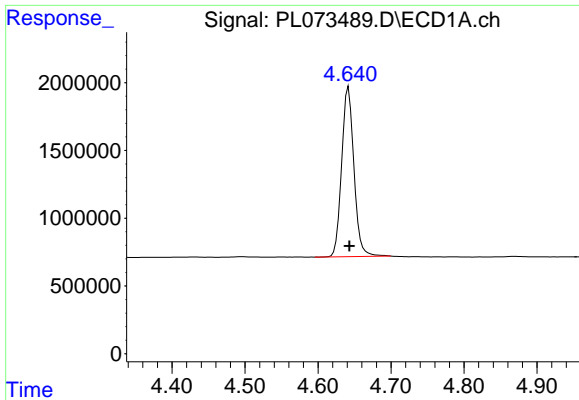
Data Path : Z:\pestpcbsrv\HPCHEM1\ECD\_L\Data\PL031822\  
 Data File : PL073489.D  
 Signal(s) : Signal #1: ECD1A.ch Signal #2: ECD2B.ch  
 Acq On : 18 Mar 2022 20:21  
 Operator : AR\AJ  
 Sample : PSTDCCC050  
 Misc :  
 ALS Vial : 4 Sample Multiplier: 1

Instrument :  
 ECD\_L  
 ClientSampleId :

Integration File signal 1: autoint1.e  
 Integration File signal 2: autoint2.e  
 Quant Time: Mar 19 01:17:49 2022  
 Quant Method : Z:\pestpcbsrv\HPCHEM1\ECD\_L\methods\PL031122.M  
 Quant Title : GC Extractables  
 QLast Update : Mon Mar 14 04:12:46 2022  
 Response via : Initial Calibration  
 Integrator: ChemStation

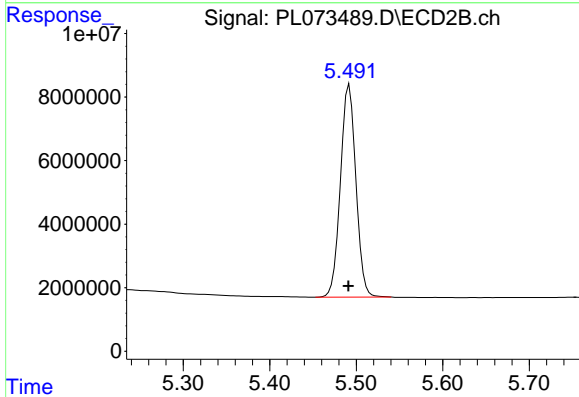
Volume Inj. : 1 µl  
 Signal #1 Phase : ZB-MR2 Signal #2 Phase: ZB-MR1  
 Signal #1 Info : 30M x 0.32mm x0.2 Signal #2 Info : 30M x 0.32mm x0.5µm



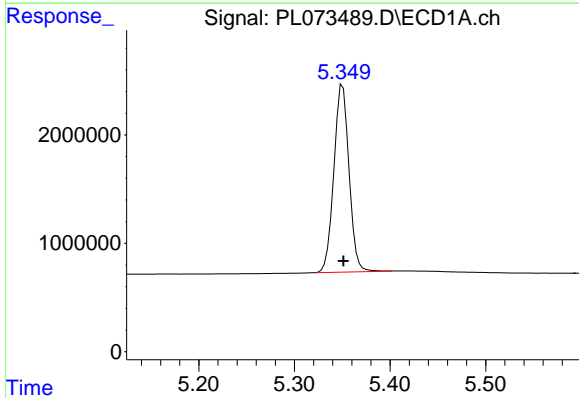


#1 Tetrachloro-m-xylene  
 R.T.: 4.642 min  
 Delta R.T.: -0.001 min  
 Response: 14604519  
 Conc: 45.60 ng/ml

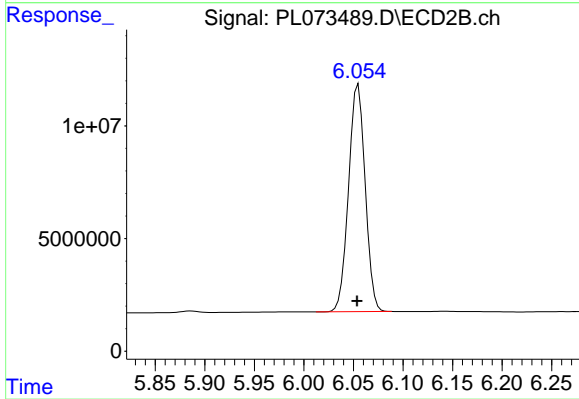
Instrument :  
 ECD\_L  
 ClientSampleId :



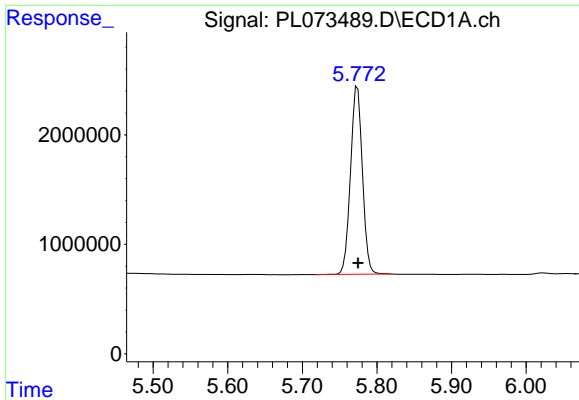
#1 Tetrachloro-m-xylene  
 R.T.: 5.492 min  
 Delta R.T.: 0.000 min  
 Response: 82734747  
 Conc: 50.41 ng/ml



#2 alpha-BHC  
 R.T.: 5.350 min  
 Delta R.T.: 0.000 min  
 Response: 19030279  
 Conc: 46.17 ng/ml



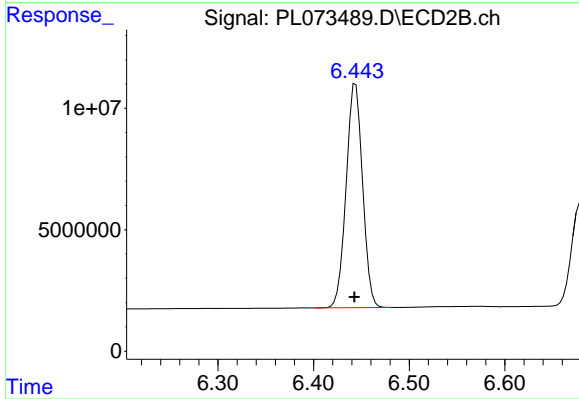
#2 alpha-BHC  
 R.T.: 6.055 min  
 Delta R.T.: 0.001 min  
 Response: 117894871  
 Conc: 52.41 ng/ml



#3 gamma-BHC (Lindane)

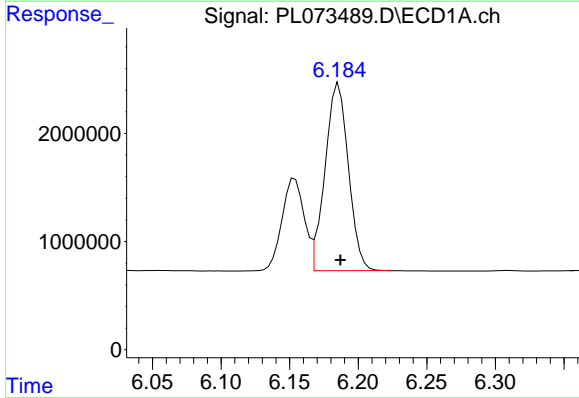
R.T.: 5.774 min  
 Delta R.T.: -0.001 min  
 Response: 19034767  
 Conc: 45.63 ng/ml

Instrument :  
 ECD\_L  
 ClientSampleId :



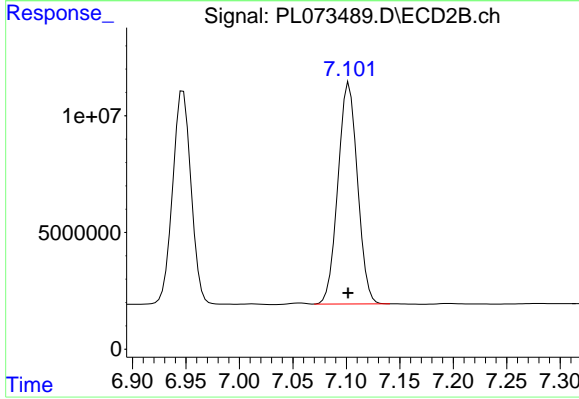
#3 gamma-BHC (Lindane)

R.T.: 6.444 min  
 Delta R.T.: 0.001 min  
 Response: 110556957  
 Conc: 51.78 ng/ml



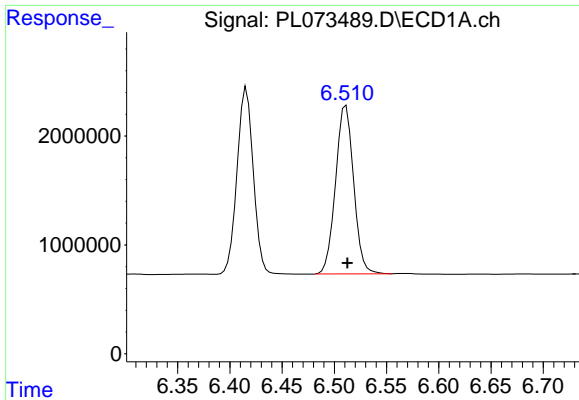
#4 Heptachlor

R.T.: 6.186 min  
 Delta R.T.: -0.001 min  
 Response: 20488904  
 Conc: 45.41 ng/ml



#4 Heptachlor

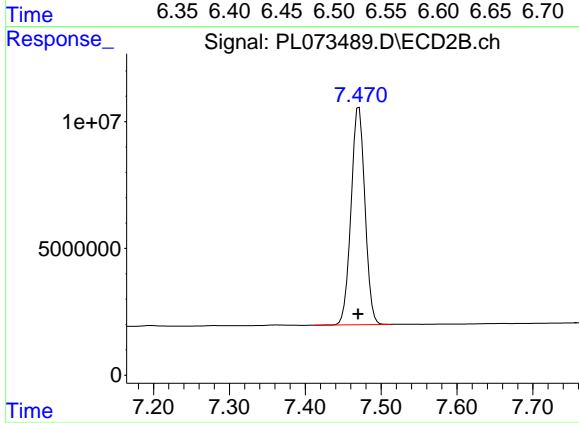
R.T.: 7.103 min  
 Delta R.T.: 0.001 min  
 Response: 120699142  
 Conc: 51.51 ng/ml



#5 Aldrin

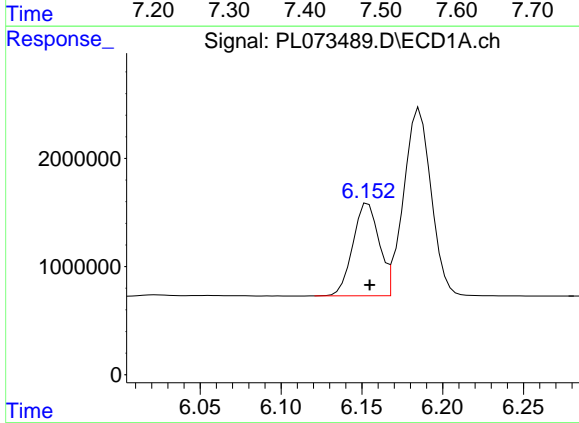
R.T.: 6.511 min  
 Delta R.T.: -0.001 min  
 Response: 18617965  
 Conc: 45.06 ng/ml

Instrument :  
 ECD\_L  
 ClientSampleId :



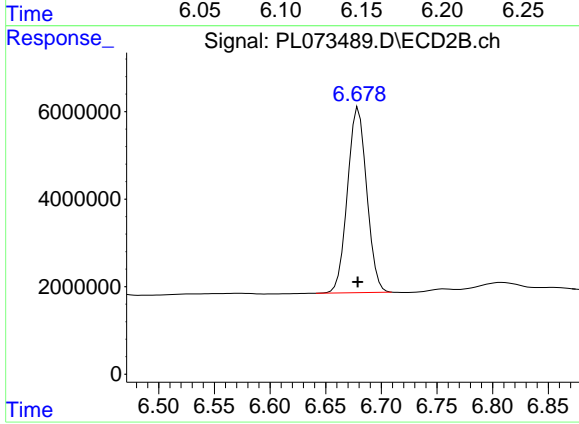
#5 Aldrin

R.T.: 7.471 min  
 Delta R.T.: 0.001 min  
 Response: 109007025  
 Conc: 52.03 ng/ml



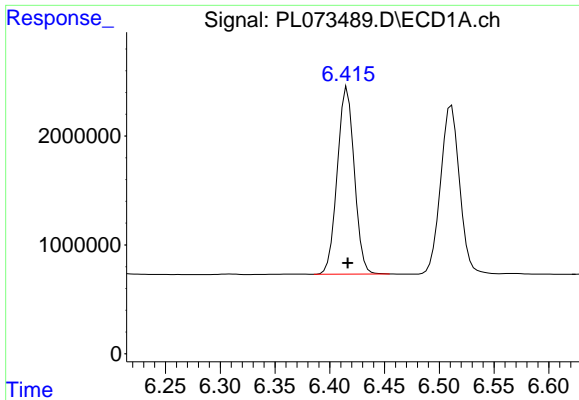
#6 beta-BHC

R.T.: 6.154 min  
 Delta R.T.: 0.000 min  
 Response: 9618731  
 Conc: 46.72 ng/ml



#6 beta-BHC

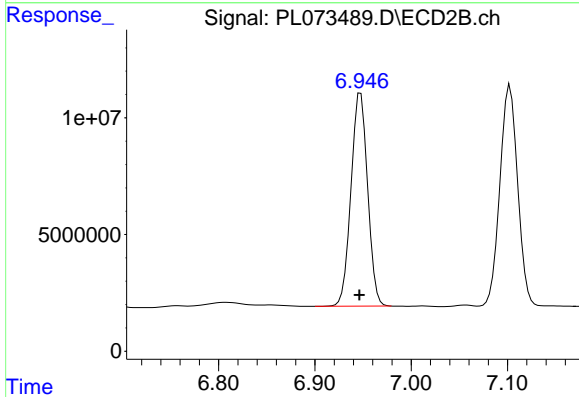
R.T.: 6.680 min  
 Delta R.T.: 0.000 min  
 Response: 51010877  
 Conc: 48.94 ng/ml



#7 delta-BHC

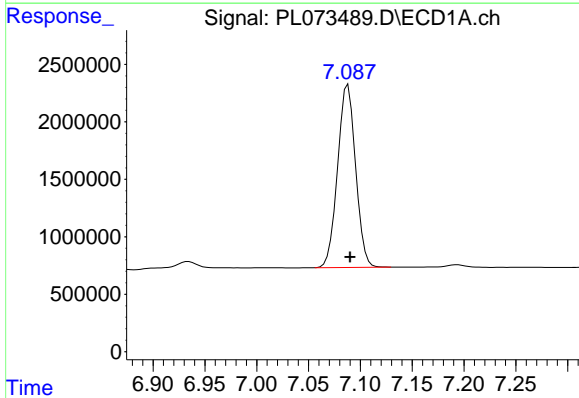
R.T.: 6.416 min  
 Delta R.T.: 0.000 min  
 Response: 18544911  
 Conc: 46.17 ng/ml

Instrument :  
 ECD\_L  
 ClientSampleId :



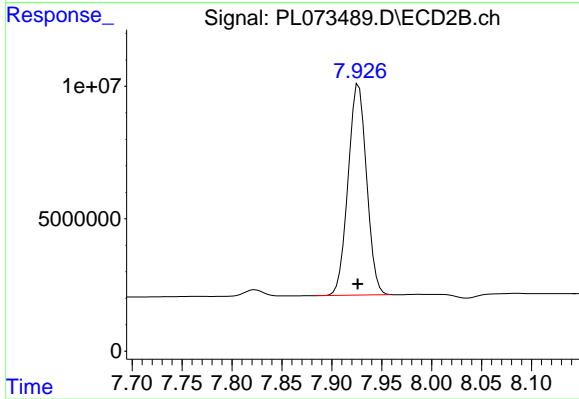
#7 delta-BHC

R.T.: 6.947 min  
 Delta R.T.: 0.001 min  
 Response: 109354980  
 Conc: 50.78 ng/ml



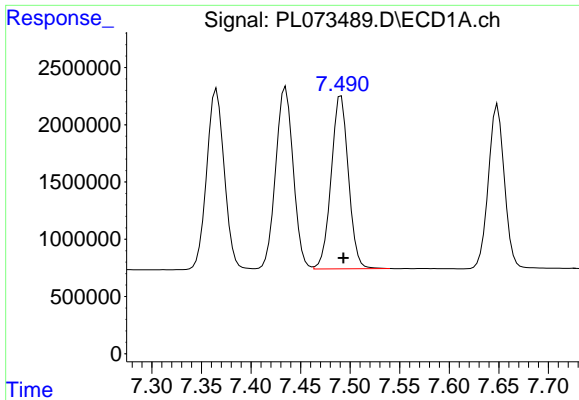
#8 Heptachlor epoxide

R.T.: 7.088 min  
 Delta R.T.: -0.002 min  
 Response: 19231317  
 Conc: 44.62 ng/ml



#8 Heptachlor epoxide

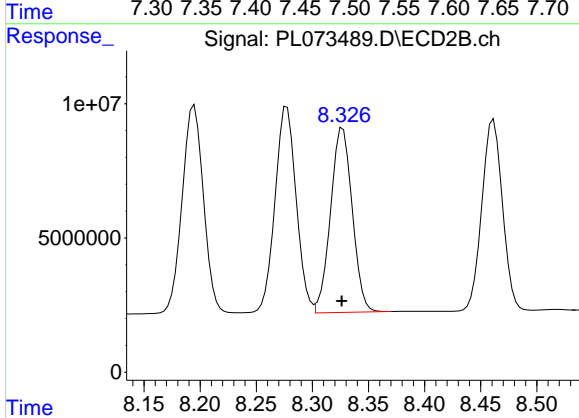
R.T.: 7.927 min  
 Delta R.T.: 0.000 min  
 Response: 102704611  
 Conc: 51.42 ng/ml



#9 Endosulfan I

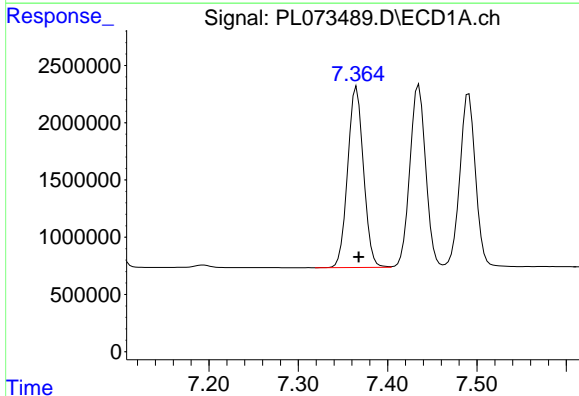
R.T.: 7.491 min  
 Delta R.T.: -0.002 min  
 Response: 18317736  
 Conc: 44.65 ng/ml

Instrument :  
 ECD\_L  
 ClientSampleId :



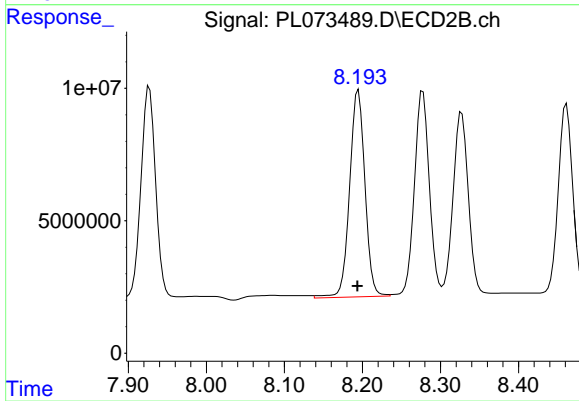
#9 Endosulfan I

R.T.: 8.327 min  
 Delta R.T.: 0.000 min  
 Response: 92477971  
 Conc: 50.66 ng/ml



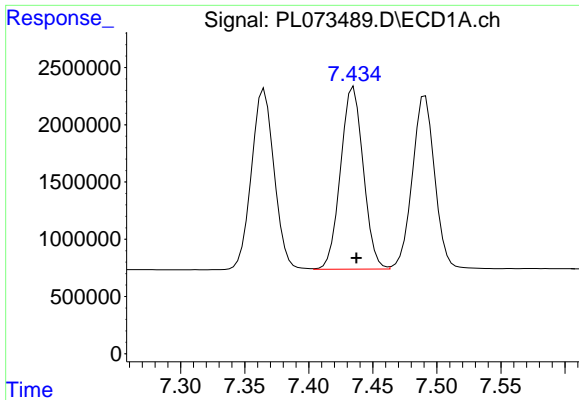
#10 gamma-Chlordane

R.T.: 7.365 min  
 Delta R.T.: -0.002 min  
 Response: 19408714  
 Conc: 44.38 ng/ml



#10 gamma-Chlordane

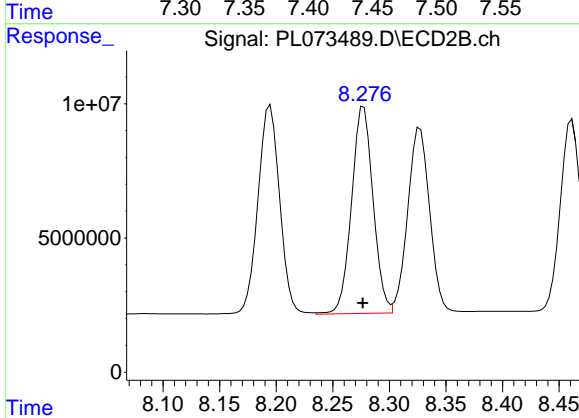
R.T.: 8.195 min  
 Delta R.T.: 0.001 min  
 Response: 106435740  
 Conc: 52.11 ng/ml



#11 alpha-Chlordane

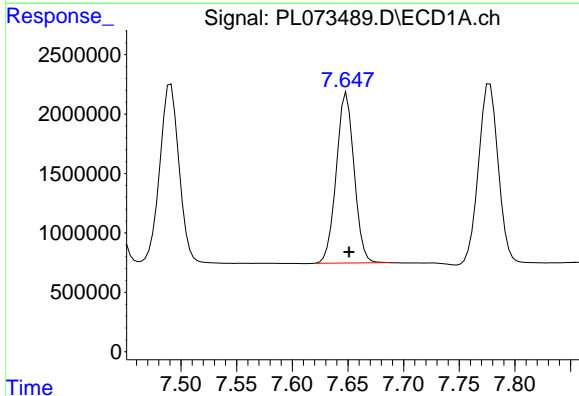
R.T.: 7.435 min  
 Delta R.T.: -0.002 min  
 Response: 19620740  
 Conc: 44.40 ng/ml

Instrument :  
 ECD\_L  
 ClientSampleId :



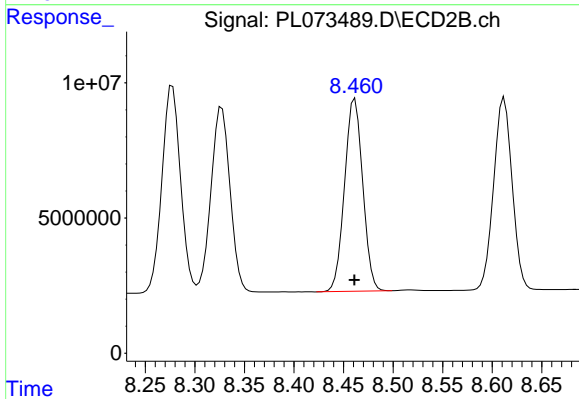
#11 alpha-Chlordane

R.T.: 8.277 min  
 Delta R.T.: 0.000 min  
 Response: 102014711  
 Conc: 51.01 ng/ml



#12 4,4'-DDE

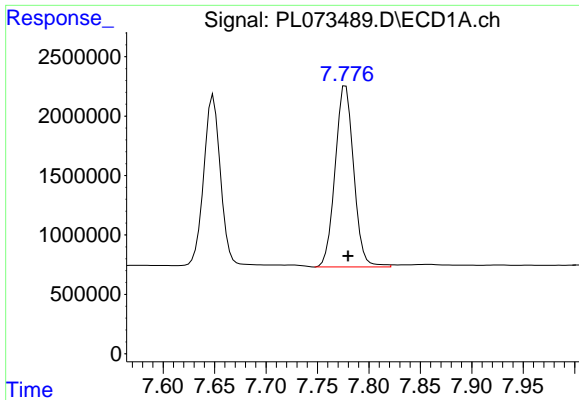
R.T.: 7.649 min  
 Delta R.T.: -0.002 min  
 Response: 15962626  
 Conc: 44.48 ng/ml



#12 4,4'-DDE

R.T.: 8.461 min  
 Delta R.T.: 0.000 min  
 Response: 91018985  
 Conc: 50.78 ng/ml

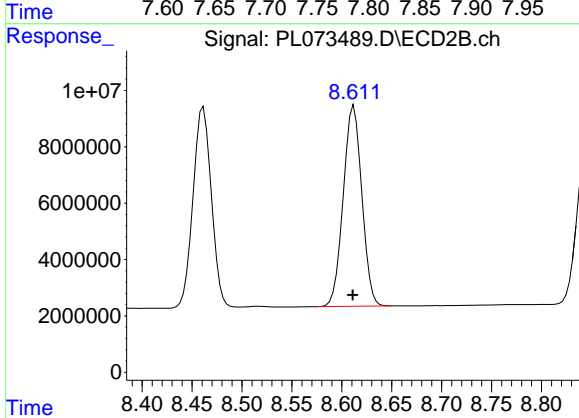




#13 Dieldrin

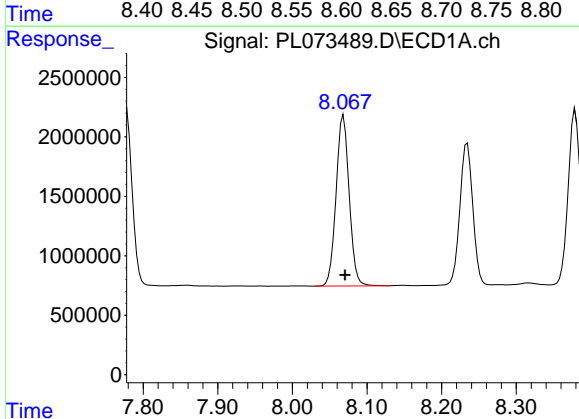
R.T.: 7.777 min  
 Delta R.T.: -0.002 min  
 Response: 19134720  
 Conc: 45.93 ng/ml

Instrument :  
 ECD\_L  
 ClientSampleId :



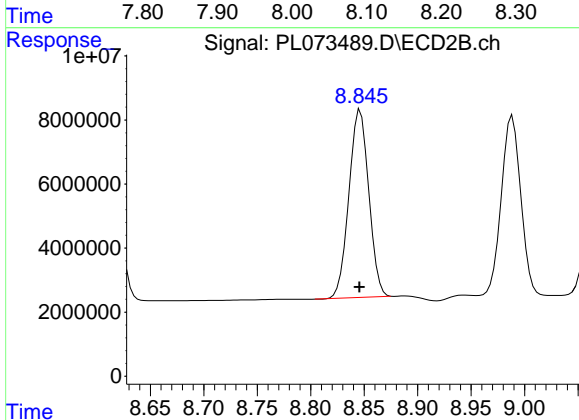
#13 Dieldrin

R.T.: 8.612 min  
 Delta R.T.: 0.000 min  
 Response: 92251748  
 Conc: 50.01 ng/ml



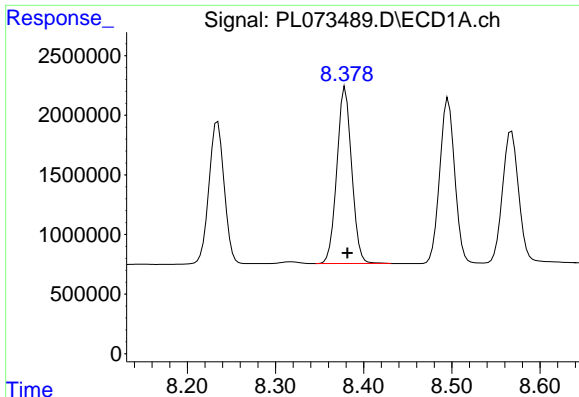
#14 Endrin

R.T.: 8.069 min  
 Delta R.T.: -0.002 min  
 Response: 17518433  
 Conc: 45.15 ng/ml



#14 Endrin

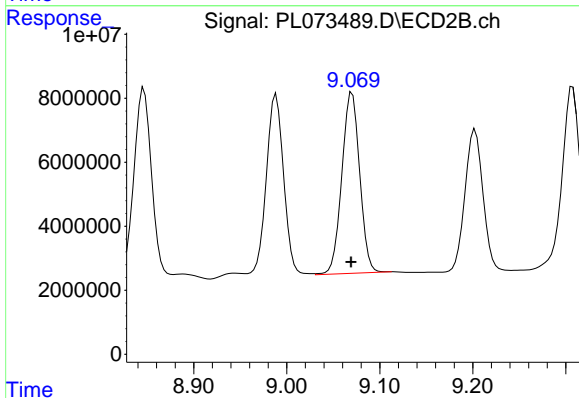
R.T.: 8.846 min  
 Delta R.T.: 0.000 min  
 Response: 75807699  
 Conc: 49.24 ng/ml



#15 Endosulfan II

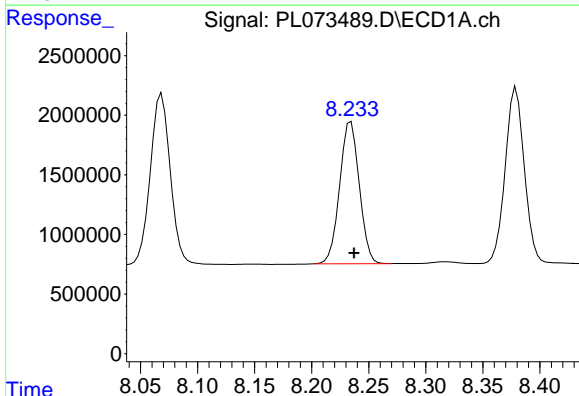
R.T.: 8.379 min  
 Delta R.T.: -0.003 min  
 Response: 17257052  
 Conc: 44.15 ng/ml

Instrument :  
 ECD\_L  
 ClientSampleId :



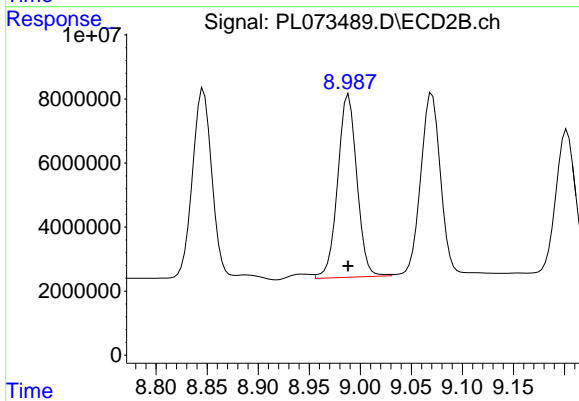
#15 Endosulfan II

R.T.: 9.070 min  
 Delta R.T.: 0.001 min  
 Response: 75434490  
 Conc: 49.12 ng/ml



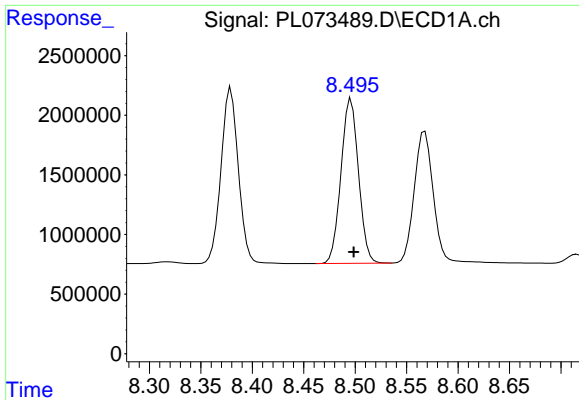
#16 4,4'-DDD

R.T.: 8.234 min  
 Delta R.T.: -0.003 min  
 Response: 14274962  
 Conc: 43.96 ng/ml



#16 4,4'-DDD

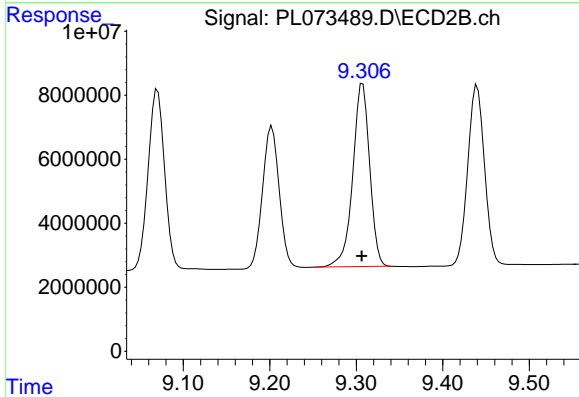
R.T.: 8.989 min  
 Delta R.T.: 0.000 min  
 Response: 74694691  
 Conc: 51.17 ng/ml



#17 4,4'-DDT

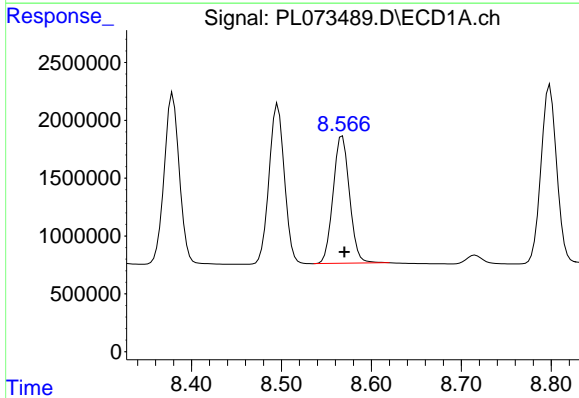
R.T.: 8.496 min  
 Delta R.T.: -0.003 min  
 Response: 16358573  
 Conc: 43.26 ng/ml

Instrument :  
 ECD\_L  
 ClientSampleId :



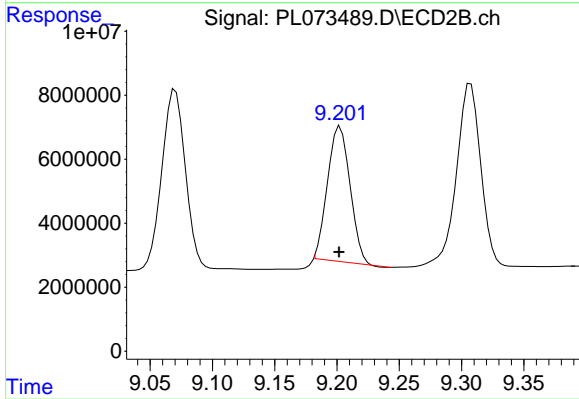
#17 4,4'-DDT

R.T.: 9.307 min  
 Delta R.T.: 0.000 min  
 Response: 77728828  
 Conc: 47.55 ng/ml



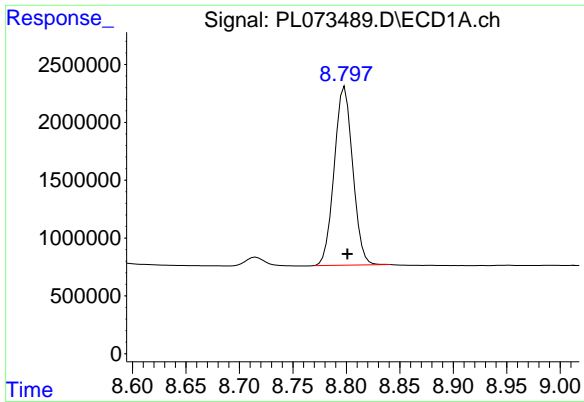
#18 Endrin aldehyde

R.T.: 8.568 min  
 Delta R.T.: -0.002 min  
 Response: 13972676  
 Conc: 44.18 ng/ml



#18 Endrin aldehyde

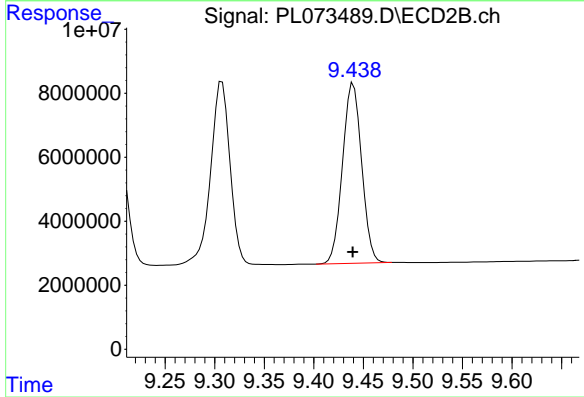
R.T.: 9.203 min  
 Delta R.T.: 0.000 min  
 Response: 53099139  
 Conc: 43.30 ng/ml



#19 Endosulfan Sulfate

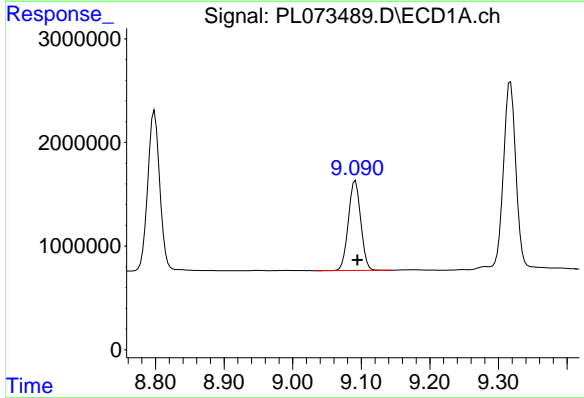
R.T.: 8.799 min  
 Delta R.T.: -0.002 min  
 Response: 18605015  
 Conc: 44.04 ng/ml

Instrument :  
 ECD\_L  
 ClientSampleId :



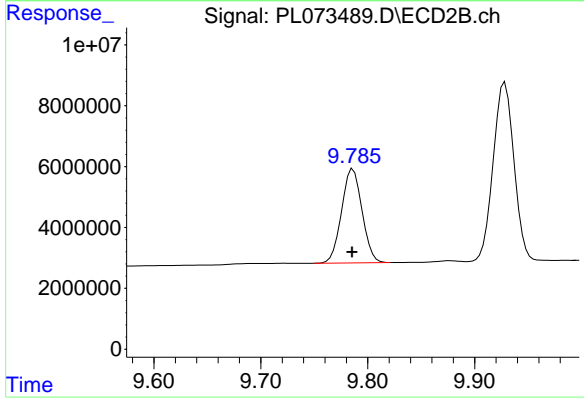
#19 Endosulfan Sulfate

R.T.: 9.440 min  
 Delta R.T.: 0.000 min  
 Response: 75669788  
 Conc: 48.01 ng/ml



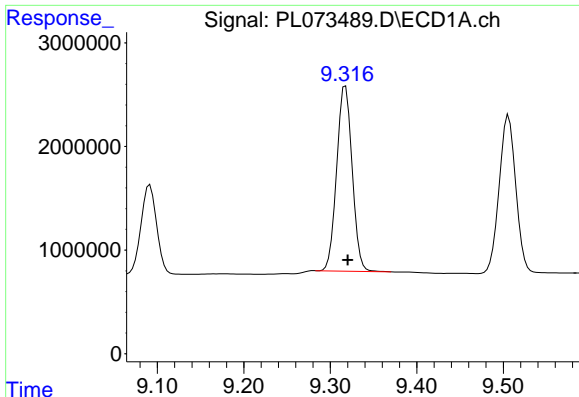
#20 Methoxychlor

R.T.: 9.092 min  
 Delta R.T.: -0.003 min  
 Response: 10894376  
 Conc: 42.47 ng/ml



#20 Methoxychlor

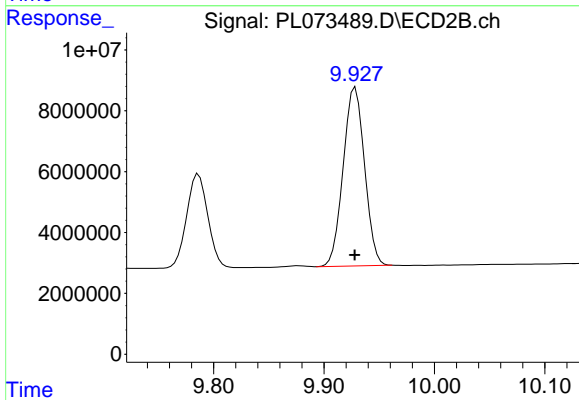
R.T.: 9.786 min  
 Delta R.T.: 0.000 min  
 Response: 41172598  
 Conc: 45.69 ng/ml



#21 Endrin ketone

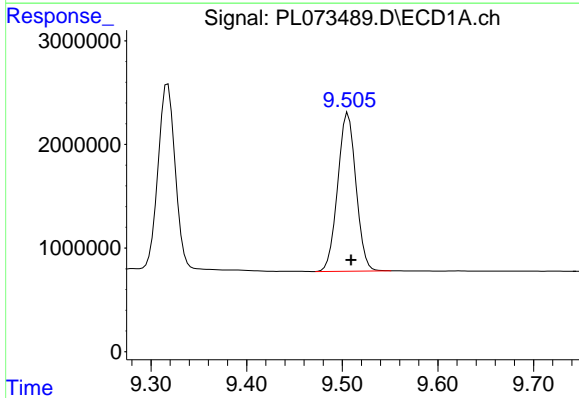
R.T.: 9.318 min  
 Delta R.T.: -0.002 min  
 Response: 22090610  
 Conc: 45.15 ng/ml

Instrument :  
 ECD\_L  
 ClientSampleId :



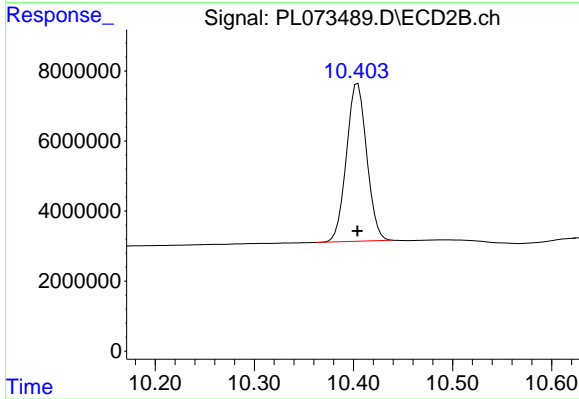
#21 Endrin ketone

R.T.: 9.928 min  
 Delta R.T.: 0.000 min  
 Response: 79090371  
 Conc: 47.92 ng/ml



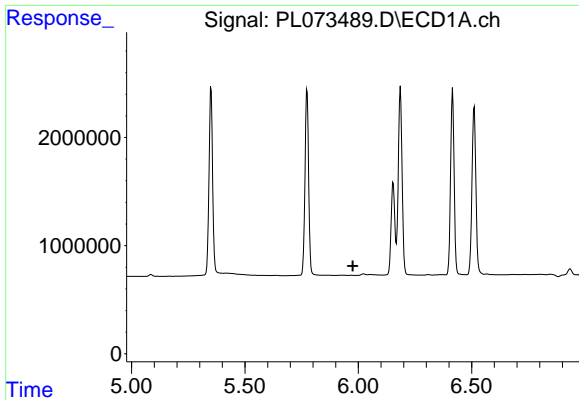
#22 Mirex

R.T.: 9.506 min  
 Delta R.T.: -0.003 min  
 Response: 20309943  
 Conc: 43.07 ng/ml



#22 Mirex

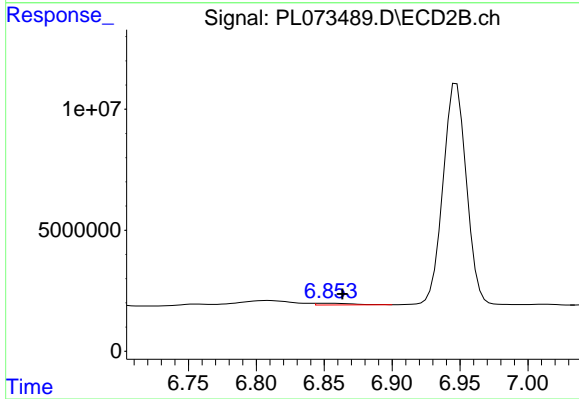
R.T.: 10.404 min  
 Delta R.T.: 0.000 min  
 Response: 64108012  
 Conc: 47.19 ng/ml



#23 Chlordane-1

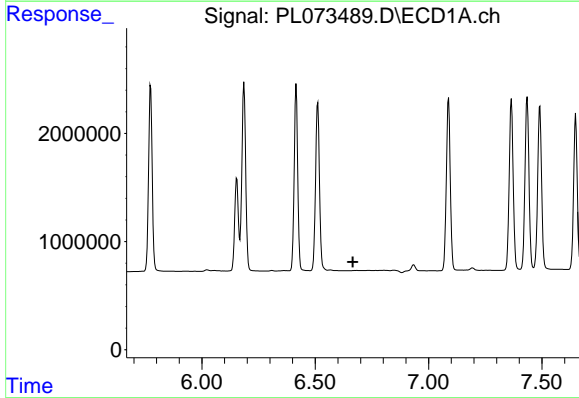
R.T.: 0.000 min  
 Exp R.T. : 5.976 min  
 Response: 0  
 Conc: N.D.

Instrument :  
 ECD\_L  
 ClientSampleId :



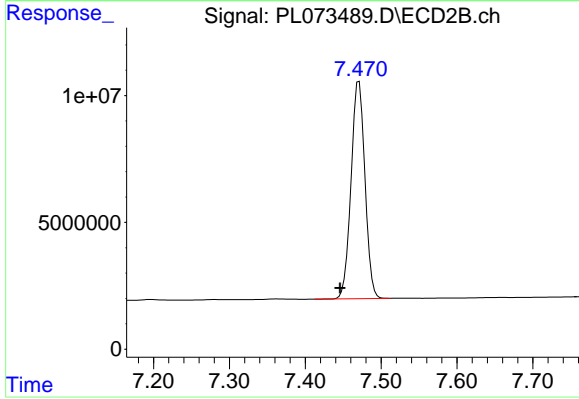
#23 Chlordane-1

R.T.: 6.854 min  
 Delta R.T.: -0.009 min  
 Response: 1300592  
 Conc: 19.04 ng/ml



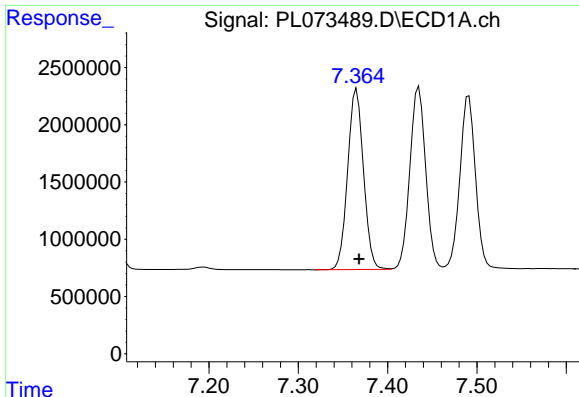
#24 Chlordane-2

R.T.: 0.000 min  
 Exp R.T. : 6.665 min  
 Response: 0  
 Conc: N.D.



#24 Chlordane-2

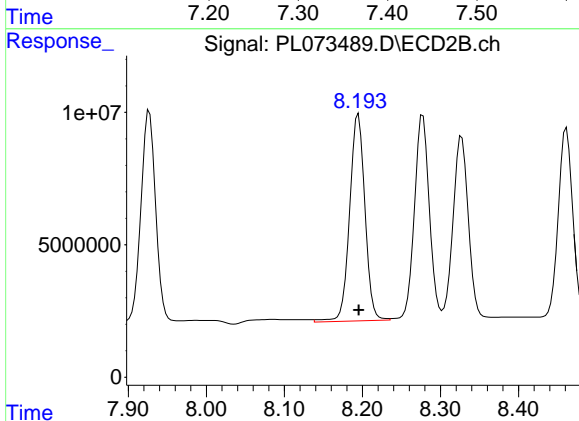
R.T.: 7.471 min  
 Delta R.T.: 0.025 min  
 Response: 109007025  
 Conc: 1516.65 ng/ml



#25 Chlordane-3

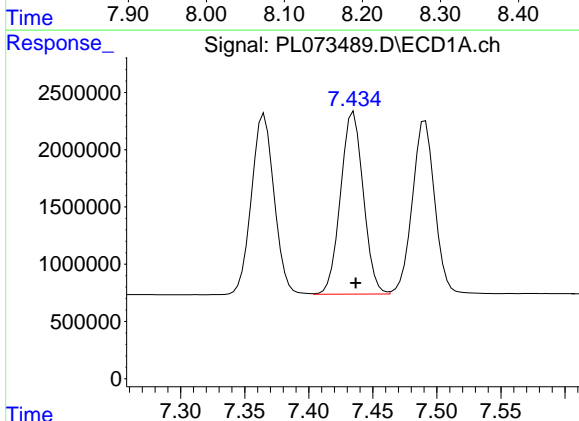
R.T.: 7.365 min  
 Delta R.T.: -0.003 min  
 Response: 19408714  
 Conc: 475.31 ng/ml

Instrument :  
 ECD\_L  
 ClientSampleId :



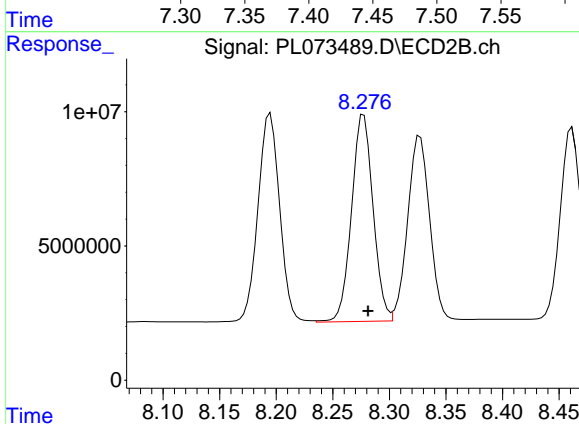
#25 Chlordane-3

R.T.: 8.195 min  
 Delta R.T.: 0.000 min  
 Response: 106435740  
 Conc: 392.56 ng/ml



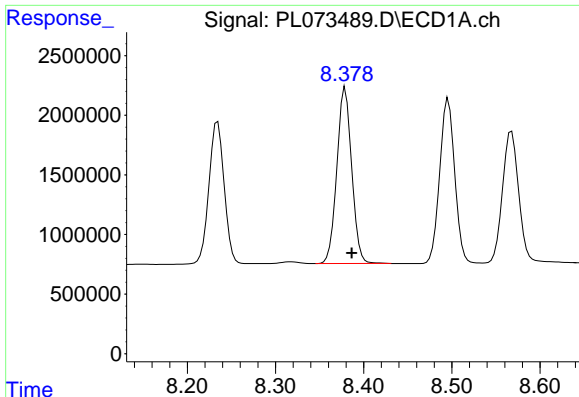
#26 Chlordane-4

R.T.: 7.435 min  
 Delta R.T.: -0.002 min  
 Response: 19620740  
 Conc: 442.70 ng/ml



#26 Chlordane-4

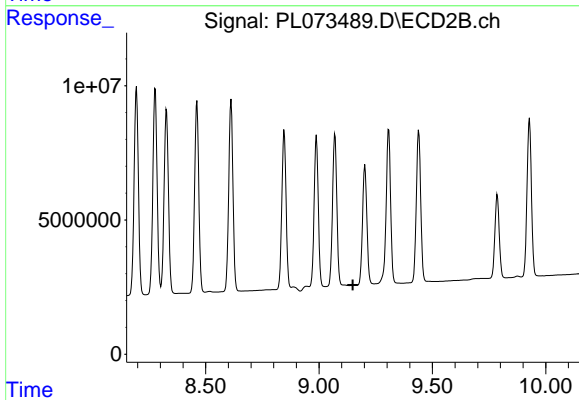
R.T.: 8.277 min  
 Delta R.T.: -0.004 min  
 Response: 102014711  
 Conc: 307.97 ng/ml



#27 Chlordane-5

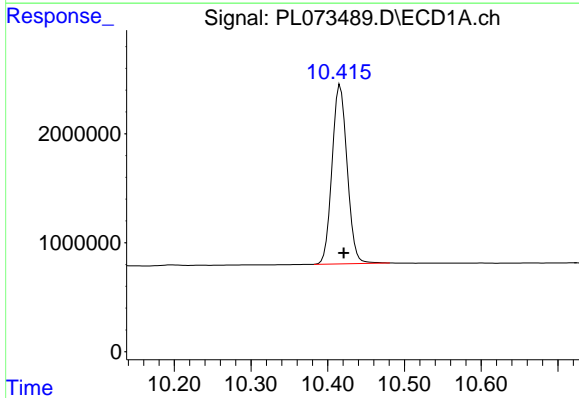
R.T.: 8.379 min  
 Delta R.T.: -0.007 min  
 Response: 17257052  
 Conc: 1053.85 ng/m

Instrument :  
 ECD\_L  
 ClientSampleId :



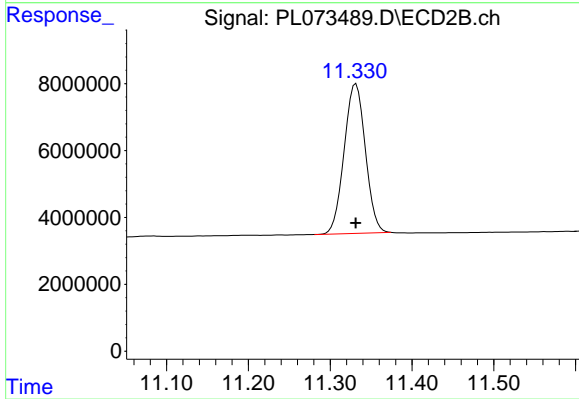
#27 Chlordane-5

R.T.: 0.000 min  
 Exp R.T. : 9.149 min  
 Response: 0  
 Conc: N.D.



#28 Decachlorobiphenyl

R.T.: 10.416 min  
 Delta R.T.: -0.005 min  
 Response: 22489368  
 Conc: 44.23 ng/ml



#28 Decachlorobiphenyl

R.T.: 11.332 min  
 Delta R.T.: 0.000 min  
 Response: 80423197  
 Conc: 44.98 ng/ml