

Data Path : Z:\pestpcbsrv\HPCHEM1\ECD_L\Data\PL031919\
 Data File : PL046130.D
 Signal(s) : Signal #1: ECD1A.ch Signal #2: ECD2B.ch
 Acq On : 19 Mar 2019 11:07
 Operator : AJ\SJ
 Sample : K1935-03
 Misc :
 ALS Vial : 7 Sample Multiplier: 1

Instrument :
 ECD_L
 ClientSampleId :
 SB-5(7-8)

Integration File signal 1: autoint1.e
 Integration File signal 2: autoint2.e
 Quant Time: Mar 20 02:07:07 2019
 Quant Method : Z:\pestpcbsrv\HPCHEM1\ECD_L\methods\PL022719.M
 Quant Title : GC Extractables
 QLast Update : Wed Feb 27 17:00:03 2019
 Response via : Initial Calibration
 Integrator: ChemStation

Volume Inj. : 1 µl
 Signal #1 Phase : ZB-MR2 Signal #2 Phase: ZB-MR1
 Signal #1 Info : 30M x 0.32mm x0.2 Signal #2 Info : 30M x 0.32mm x0.5µm

Compound	RT#1	RT#2	Resp#1	Resp#2	ng/ml	ng/ml

System Monitoring Compounds						
1) SA Tetrachlo...	3.361	3.979	55007334	17427917	7.996	8.138
28) SA Decachlor...	8.039	9.032	58805724	17655780	7.028	7.727

Target Compounds

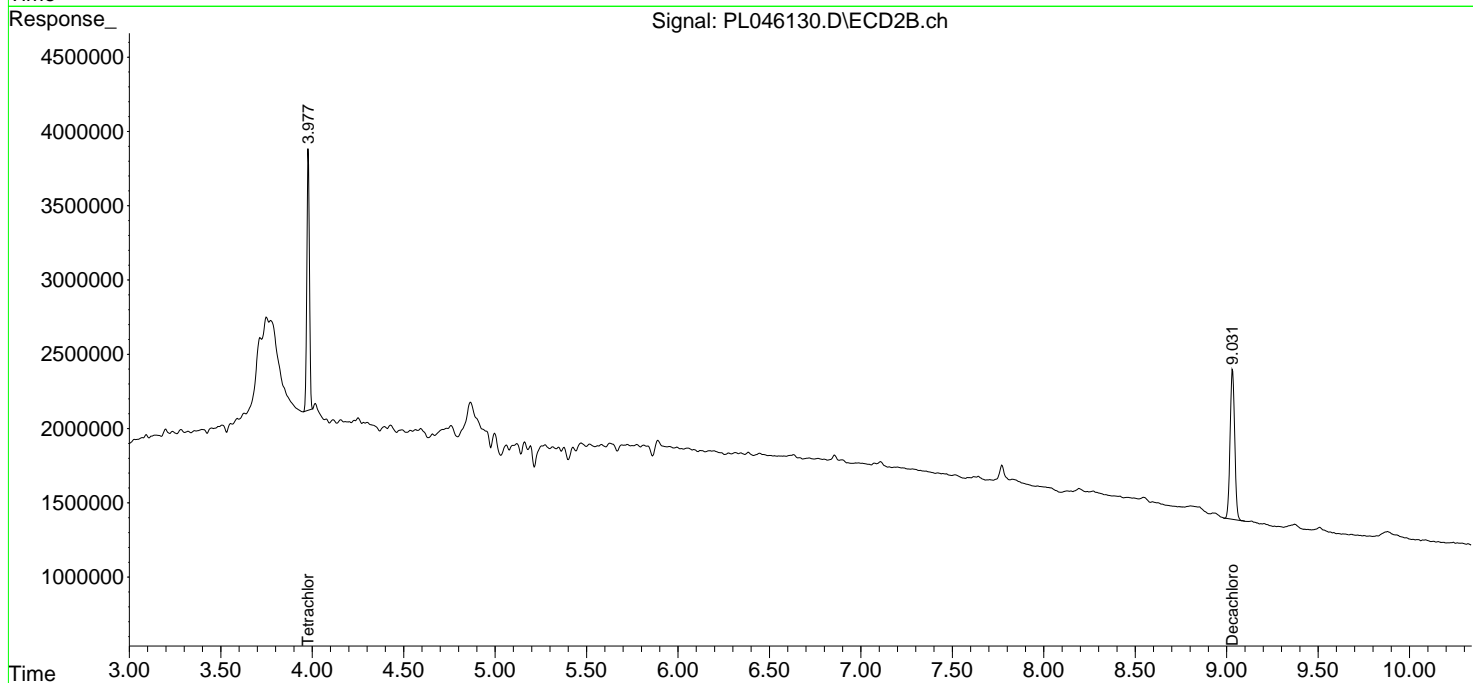
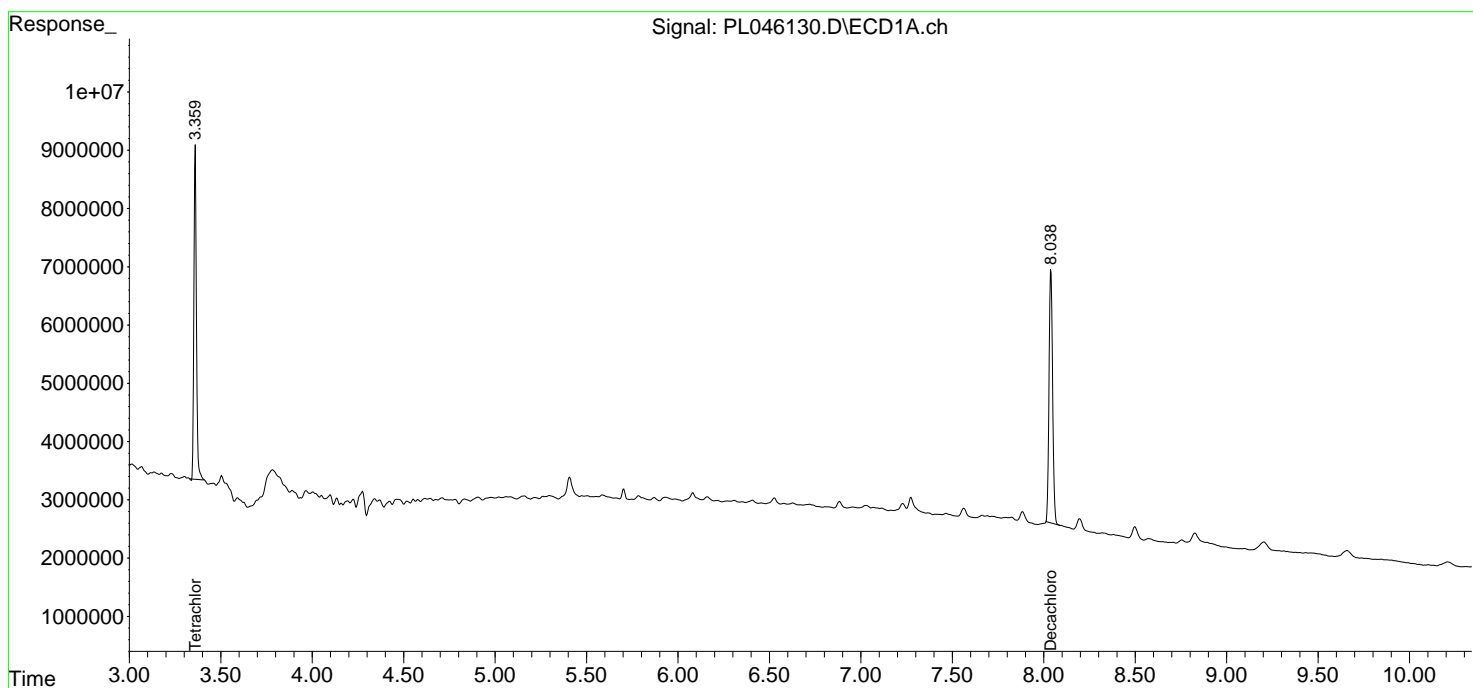
(f)=RT Delta > 1/2 Window (#)=Amounts differ by > 25% (m)=manual int.

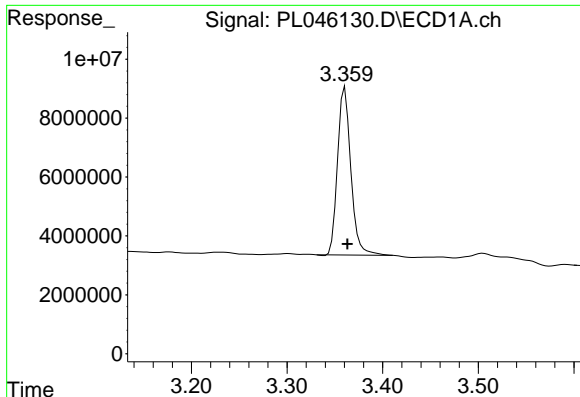
Data Path : Z:\pestpcbsrv\HPCHEM1\ECD_L\Data\PL031919\
 Data File : PL046130.D
 Signal(s) : Signal #1: ECD1A.ch Signal #2: ECD2B.ch
 Acq On : 19 Mar 2019 11:07
 Operator : AJ\SJ
 Sample : K1935-03
 Misc :
 ALS Vial : 7 Sample Multiplier: 1

Instrument :
 ECD_L
 ClientSampleID :
 SB-5(7-8)

Integration File signal 1: autoint1.e
 Integration File signal 2: autoint2.e
 Quant Time: Mar 20 02:07:07 2019
 Quant Method : Z:\pestpcbsrv\HPCHEM1\ECD_L\methods\PL022719.M
 Quant Title : GC Extractables
 QLast Update : Wed Feb 27 17:00:03 2019
 Response via : Initial Calibration
 Integrator: ChemStation

Volume Inj. : 1 µl
 Signal #1 Phase : ZB-MR2 Signal #2 Phase: ZB-MR1
 Signal #1 Info : 30M x 0.32mm x0.2 Signal #2 Info : 30M x 0.32mm x0.5µm

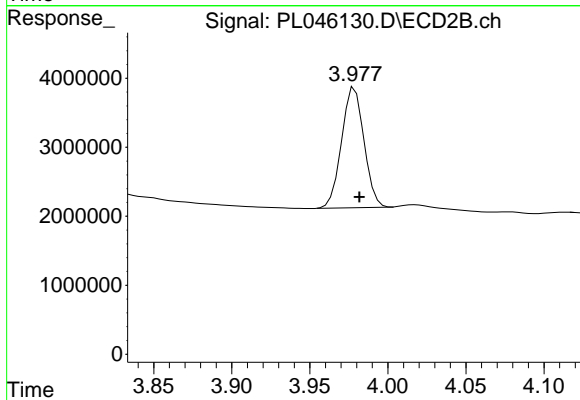




#1 Tetrachloro-m-xylene

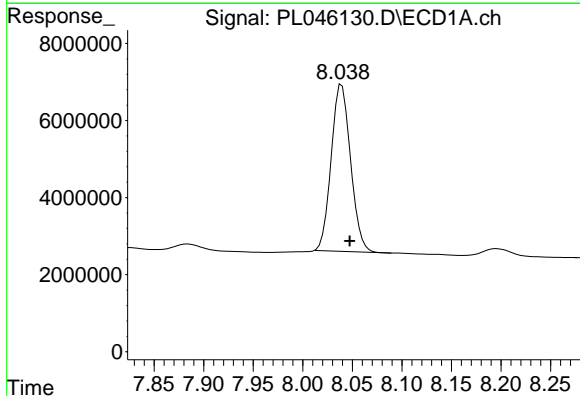
R.T.: 3.361 min
Delta R.T.: -0.002 min
Response: 55007334
Conc: 8.00 ng/ml

Instrument :
ECD_L
ClientSampleId :
SB-5(7-8)



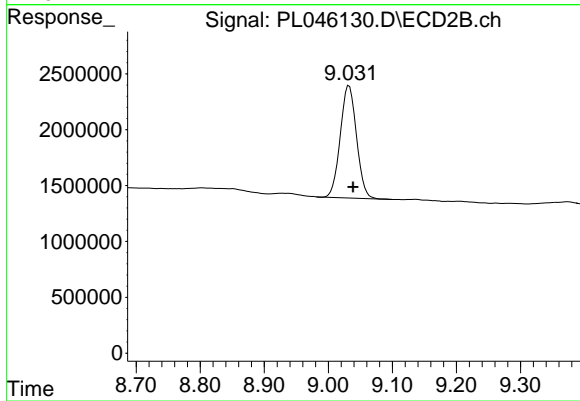
#1 Tetrachloro-m-xylene

R.T.: 3.979 min
Delta R.T.: -0.003 min
Response: 17427917
Conc: 8.14 ng/ml



#28 Decachlorobiphenyl

R.T.: 8.039 min
Delta R.T.: -0.008 min
Response: 58805724
Conc: 7.03 ng/ml



#28 Decachlorobiphenyl

R.T.: 9.032 min
Delta R.T.: -0.006 min
Response: 17655780
Conc: 7.73 ng/ml