

Data Path : Z:\pestpcbsrv\HPCHEM1\ECD_L\Data\PL031919\
 Data File : PL046152.D
 Signal(s) : Signal #1: ECD1A.ch Signal #2: ECD2B.ch
 Acq On : 19 Mar 2019 16:23
 Operator : AJ\SJ
 Sample : K1941-07MS
 Misc :
 ALS Vial : 24 Sample Multiplier: 1

Instrument :
 ECD_L
 ClientSampled :
 SPMS

Manual Integrations
 APPROVED

Sohil
 3/20/2019 10:08:35 AM

Integration File signal 1: autoint1.e
 Integration File signal 2: autoint2.e
 Quant Time: Mar 20 02:12:00 2019
 Quant Method : Z:\pestpcbsrv\HPCHEM1\ECD_L\methods\PL022719.M
 Quant Title : GC Extractables
 QLast Update : Wed Feb 27 17:00:03 2019
 Response via : Initial Calibration
 Integrator: ChemStation

Volume Inj. : 1 µl
 Signal #1 Phase : ZB-MR2 Signal #2 Phase: ZB-MR1
 Signal #1 Info : 30M x 0.32mm x0.2 Signal #2 Info : 30M x 0.32mm x0.5µm

	Compound	RT#1	RT#2	Resp#1	Resp#2	ng/ml	ng/ml

System Monitoring Compounds							
1)	SA Tetrachlo...	3.360	3.979	104.9E6	32954460	15.255	15.388
28)	SA Decachlor...	8.040	9.033	119.8E6	34231746	14.319	14.982
Target Compounds							
2)	A alpha-BHC	3.790	4.369	498.8E6	135.5E6	44.907	44.578
3)	MA gamma-BHC...	4.067	4.652	451.6E6	124.4E6	44.677	44.034m
4)	MA Heptachlor	4.355	5.160	457.6E6	126.3E6	43.363	42.443
5)	MB Aldrin	4.595	5.464	432.5E6	117.4E6	44.472	43.453
6)	B beta-BHC	4.320	4.826	186.4E6	56662192	43.491	44.617
7)	B delta-BHC	4.516	5.041	430.6E6	100.1E6	45.048	46.531
8)	B Heptachlo...	5.032	5.850	413.9E6	108.1E6	44.344	45.016
9)	A Endosulfan I	5.364	6.206	389.0E6	105.9E6	43.516	42.506
10)	B gamma-Chl...	5.255	6.084	424.4E6	115.7E6	43.359	43.139
11)	B alpha-Chl...	5.311	6.157	417.5E6	115.0E6	43.057	42.634
12)	B 4,4'-DDE	5.479	6.314	383.9E6	100.1E6	43.732	42.856
13)	MA Dieldrin	5.604	6.463	421.1E6	109.3E6	44.063	42.547
14)	MA Endrin	5.857	6.680	335.5E6	84231491	37.258	37.020
15)	B Endosulfa...	6.131	6.890	364.5E6	98376697	42.052	41.833
16)	A 4,4'-DDD	5.990	6.804	325.1E6	84103028	44.402	43.733
17)	MA 4,4'-DDT	6.225	7.102	290.0E6	77760782	38.669	39.404
18)	B Endrin al...	6.298	7.014	295.5E6	83463666	40.423	40.829
19)	B Endosulfa...	6.510	7.237	333.9E6	93197278	41.084	41.430
20)	A Methoxychlor	6.770	7.561	156.0E6	46519905	35.524	37.901
21)	B Endrin ke...	6.992	7.706	398.8E6	105.7E6	43.292	44.423
22)	Mirex	7.169	8.158	284.8E6	82234704	38.273	41.289

(f)=RT Delta > 1/2 Window (#)=Amounts differ by > 25% (m)=manual int.

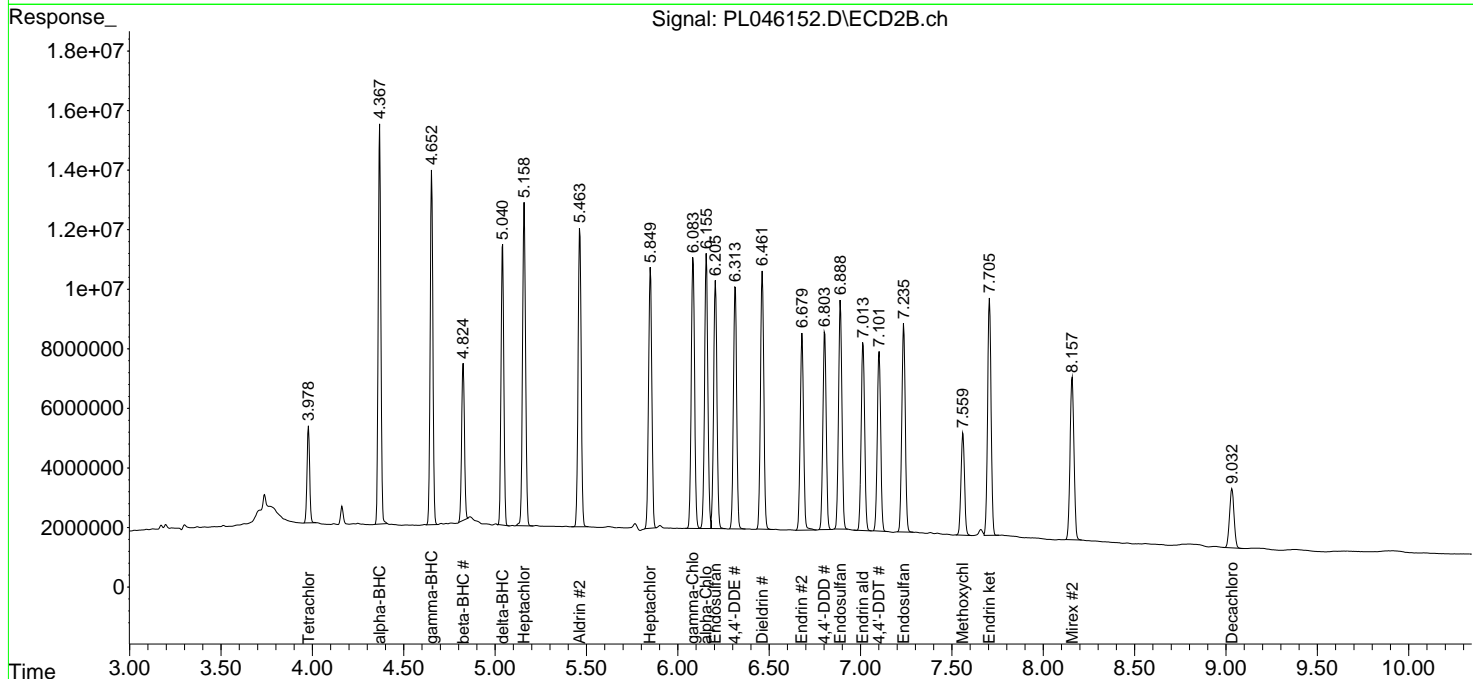
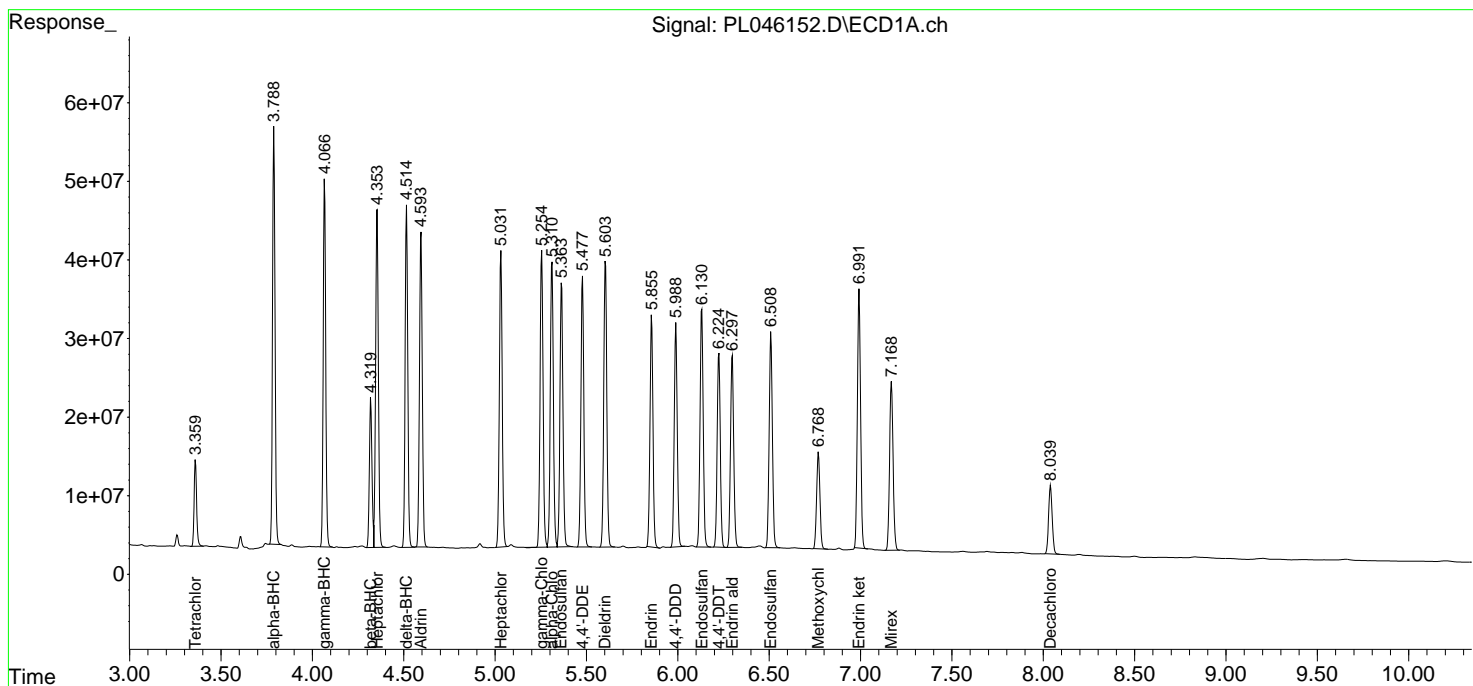
Data Path : Z:\pestpcbsrv\HPCHEM1\ECD_L\Data\PL031919\
 Data File : PL046152.D
 Signal(s) : Signal #1: ECD1A.ch Signal #2: ECD2B.ch
 Acq On : 19 Mar 2019 16:23
 Operator : AJ\SJ
 Sample : K1941-07MS
 Misc :
 ALS Vial : 24 Sample Multiplier: 1

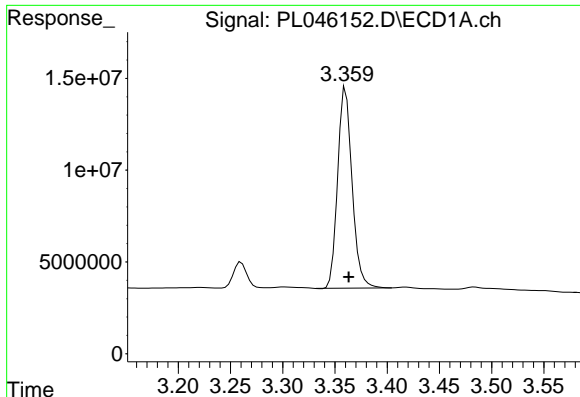
Instrument :
 ECD_L
 Client Sampled :
 SPMS

Manual Integrations
APPROVED
 Sohil
 3/20/2019 10:08:35 AM

Integration File signal 1: autoint1.e
 Integration File signal 2: autoint2.e
 Quant Time: Mar 20 02:12:00 2019
 Quant Method : Z:\pestpcbsrv\HPCHEM1\ECD_L\methods\PL022719.M
 Quant Title : GC Extractables
 QLast Update : Wed Feb 27 17:00:03 2019
 Response via : Initial Calibration
 Integrator: ChemStation

Volume Inj. : 1 µl
 Signal #1 Phase : ZB-MR2 Signal #2 Phase: ZB-MR1
 Signal #1 Info : 30M x 0.32mm x0.2 Signal #2 Info : 30M x 0.32mm x0.5µm





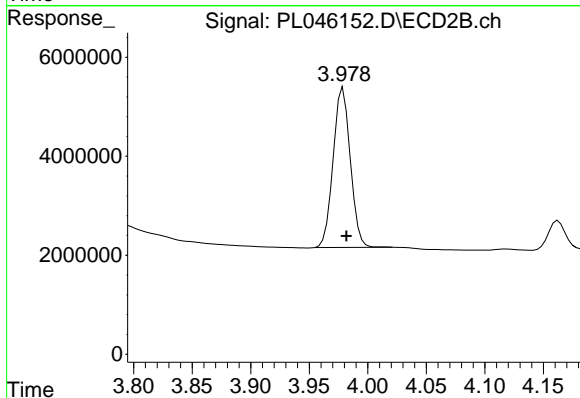
#1 Tetrachloro-m-xylene

R.T.: 3.360 min
 Delta R.T.: -0.003 min
 Response: 104941062
 Conc: 15.25 ng/ml

Instrument :
 ECD_L
 ClientSampled :
 SPMS

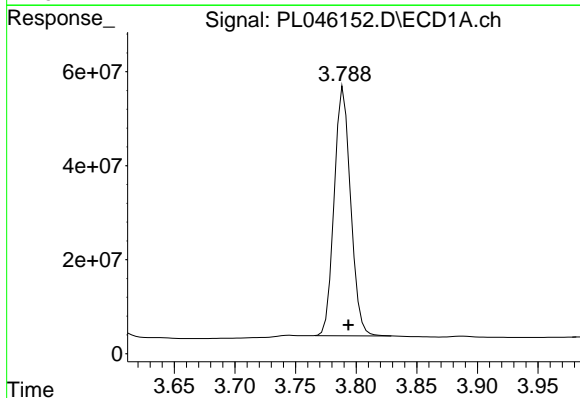
Manual Integrations
 APPROVED

Sohil
 3/20/2019 10:08:35 AM



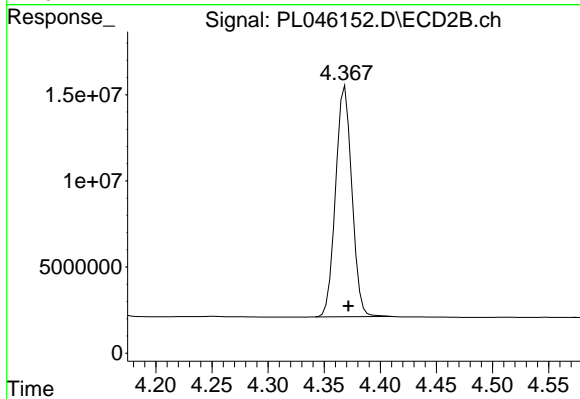
#1 Tetrachloro-m-xylene

R.T.: 3.979 min
 Delta R.T.: -0.003 min
 Response: 32954460
 Conc: 15.39 ng/ml



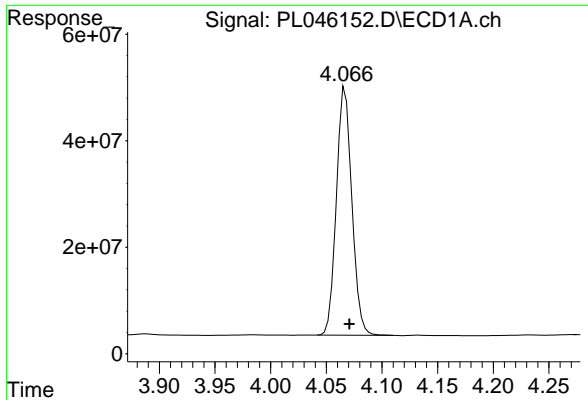
#2 alpha-BHC

R.T.: 3.790 min
 Delta R.T.: -0.004 min
 Response: 498798261
 Conc: 44.91 ng/ml



#2 alpha-BHC

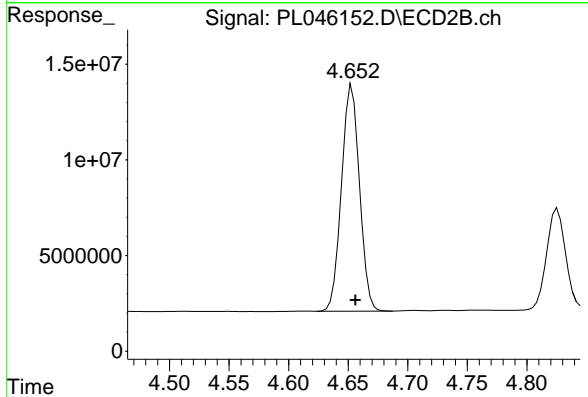
R.T.: 4.369 min
 Delta R.T.: -0.003 min
 Response: 135457617
 Conc: 44.58 ng/ml



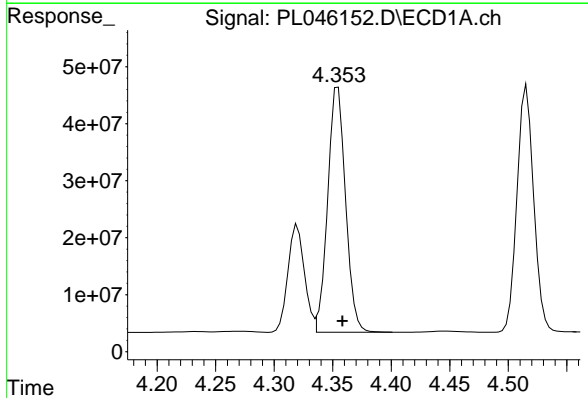
#3 gamma-BHC (Lindane)
 R.T.: 4.067 min
 Delta R.T.: -0.004 min
 Response: 451562685
 Conc: 44.68 ng/ml

Instrument :
 ECD_L
ClientSampled :
 SPMS

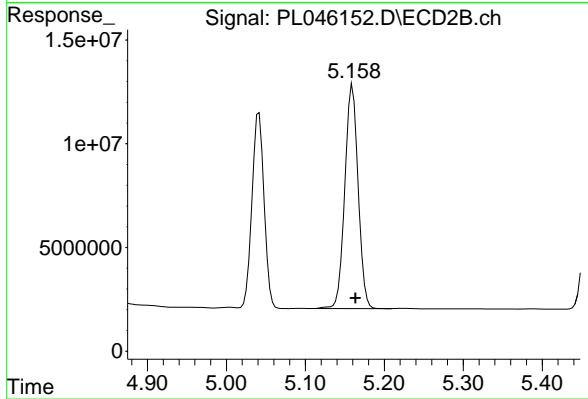
Manual Integrations
APPROVED
 Sohil
 3/20/2019 10:08:35 AM



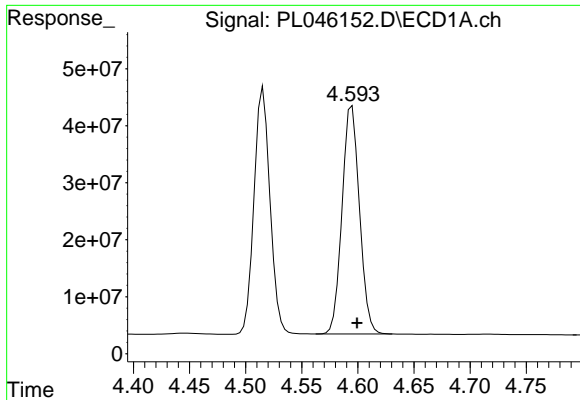
#3 gamma-BHC (Lindane)
 R.T.: 4.652 min
 Delta R.T.: -0.004 min
 Response: 124378941
 Conc: 44.03 ng/ml m



#4 Heptachlor
 R.T.: 4.355 min
 Delta R.T.: -0.004 min
 Response: 457573772
 Conc: 43.36 ng/ml



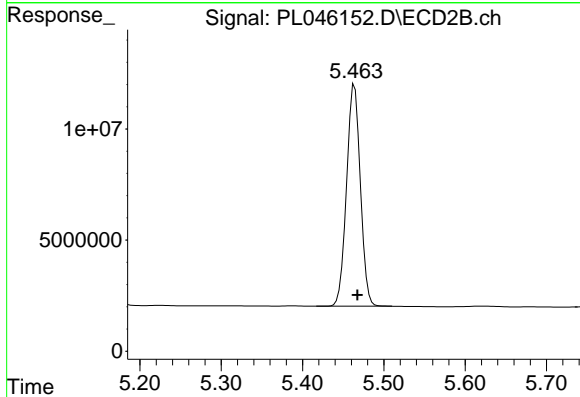
#4 Heptachlor
 R.T.: 5.160 min
 Delta R.T.: -0.003 min
 Response: 126265683
 Conc: 42.44 ng/ml



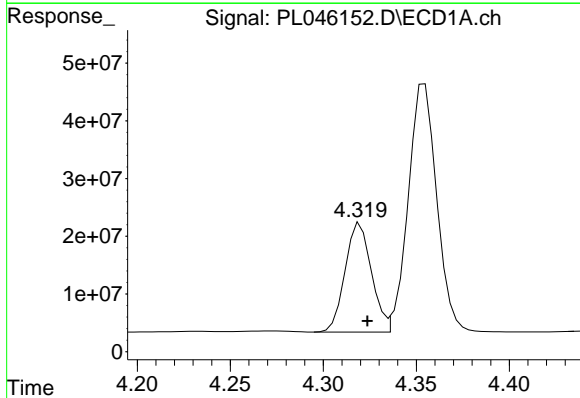
#5 Aldrin
 R.T.: 4.595 min
 Delta R.T.: -0.004 min
 Response: 432548608
 Conc: 44.47 ng/ml

Instrument :
 ECD_L
ClientSampled :
 SPMS

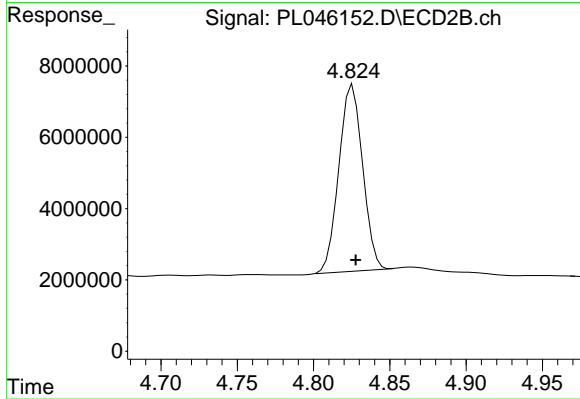
Manual Integrations
APPROVED
 Sohil
 3/20/2019 10:08:35 AM



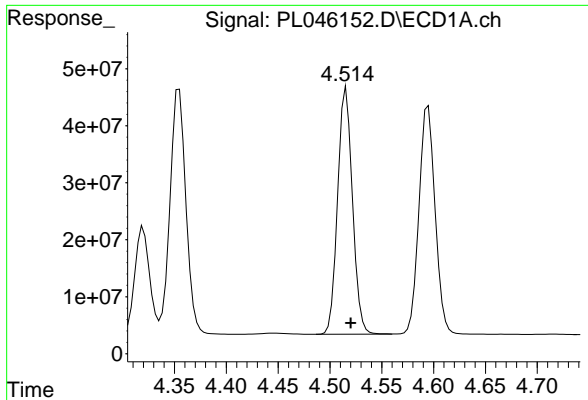
#5 Aldrin
 R.T.: 5.464 min
 Delta R.T.: -0.003 min
 Response: 117364702
 Conc: 43.45 ng/ml



#6 beta-BHC
 R.T.: 4.320 min
 Delta R.T.: -0.004 min
 Response: 186403148
 Conc: 43.49 ng/ml



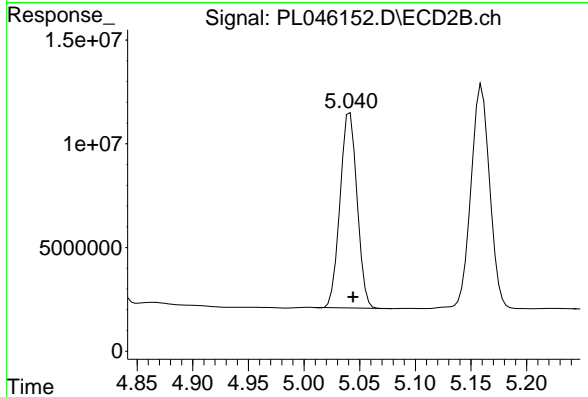
#6 beta-BHC
 R.T.: 4.826 min
 Delta R.T.: -0.002 min
 Response: 56662192
 Conc: 44.62 ng/ml



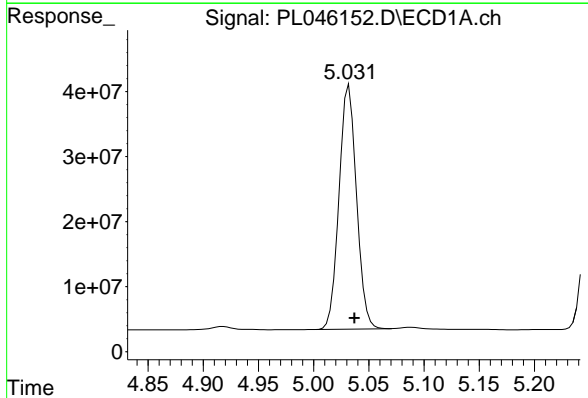
#7 delta-BHC
 R.T.: 4.516 min
 Delta R.T.: -0.004 min
 Response: 430563118
 Conc: 45.05 ng/ml

Instrument :
 ECD_L
ClientSampled :
 SPMS

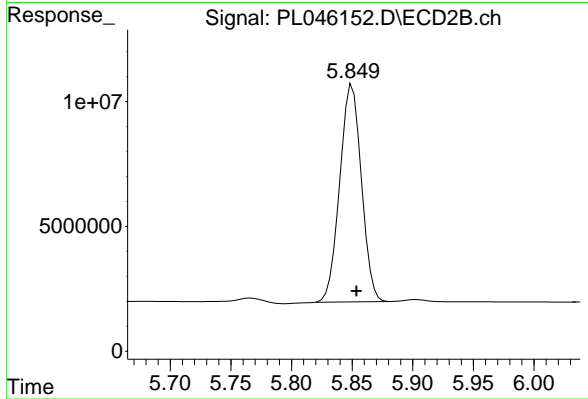
Manual Integrations
APPROVED
 Sohil
 3/20/2019 10:08:35 AM



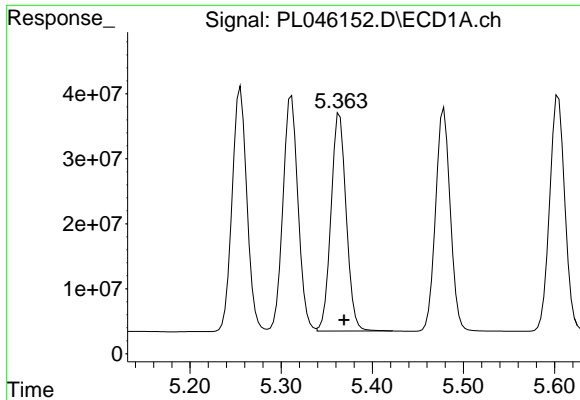
#7 delta-BHC
 R.T.: 5.041 min
 Delta R.T.: -0.003 min
 Response: 100082170
 Conc: 46.53 ng/ml



#8 Heptachlor epoxide
 R.T.: 5.032 min
 Delta R.T.: -0.005 min
 Response: 413867144
 Conc: 44.34 ng/ml



#8 Heptachlor epoxide
 R.T.: 5.850 min
 Delta R.T.: -0.003 min
 Response: 108124478
 Conc: 45.02 ng/ml

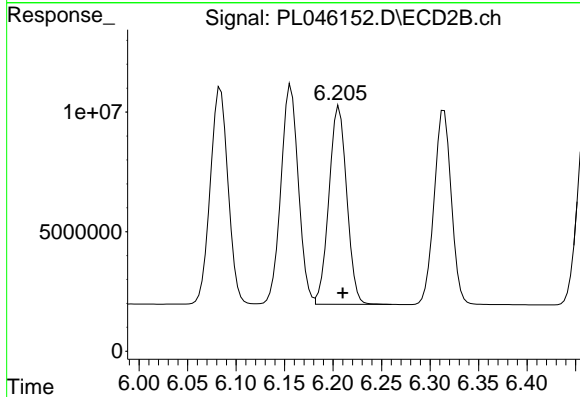


#9 Endosulfan I

R.T.: 5.364 min
 Delta R.T.: -0.005 min
 Response: 388965392
 Conc: 43.52 ng/ml

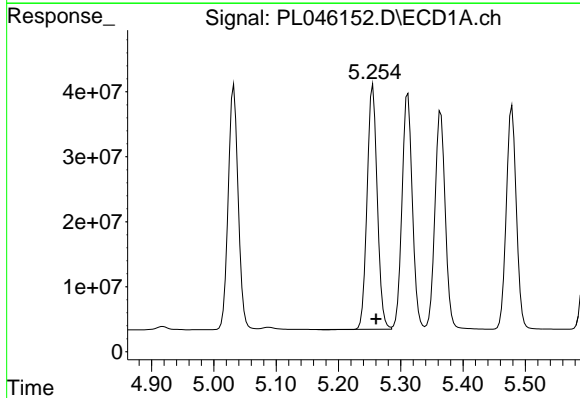
Instrument :
 ECD_L
 ClientSampled :
 SPMS

Manual Integrations
APPROVED
 Sohil
 3/20/2019 10:08:35 AM



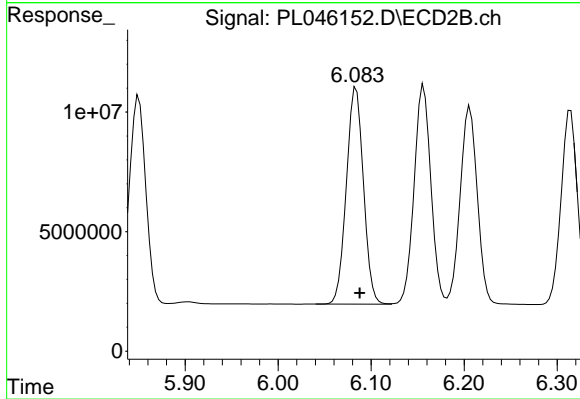
#9 Endosulfan I

R.T.: 6.206 min
 Delta R.T.: -0.004 min
 Response: 105851124
 Conc: 42.51 ng/ml



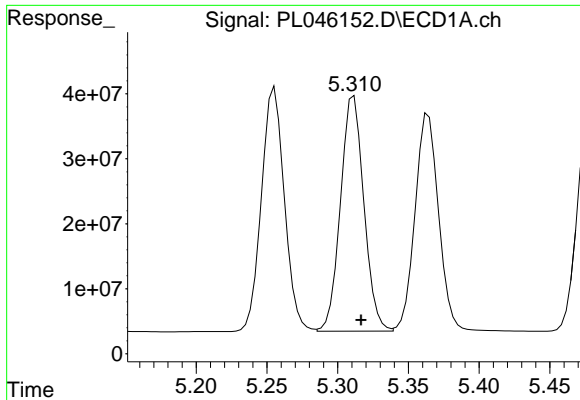
#10 gamma-Chlordane

R.T.: 5.255 min
 Delta R.T.: -0.005 min
 Response: 424350153
 Conc: 43.36 ng/ml



#10 gamma-Chlordane

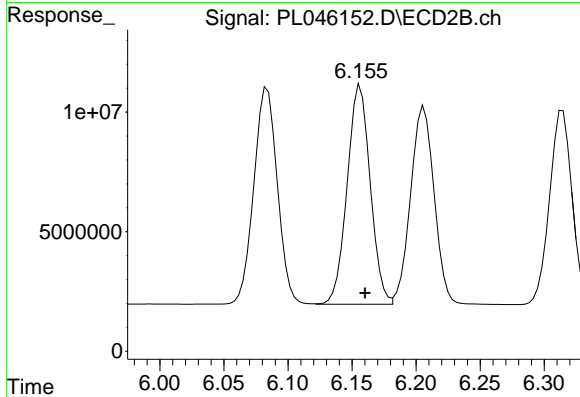
R.T.: 6.084 min
 Delta R.T.: -0.004 min
 Response: 115739394
 Conc: 43.14 ng/ml



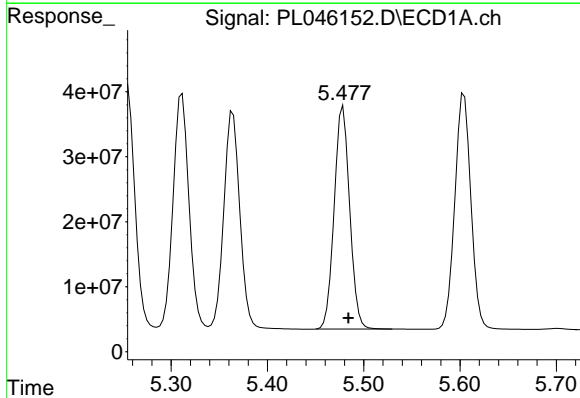
#11 alpha-Chlordane
 R.T.: 5.311 min
 Delta R.T.: -0.005 min
 Response: 417522974
 Conc: 43.06 ng/ml

Instrument :
 ECD_L
ClientSampled :
 SPMS

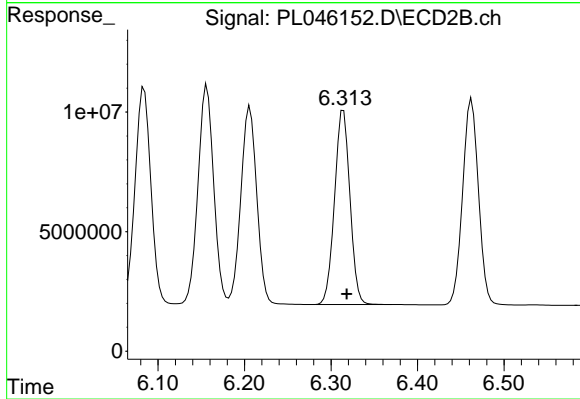
Manual Integrations
APPROVED
 Sohil
 3/20/2019 10:08:35 AM



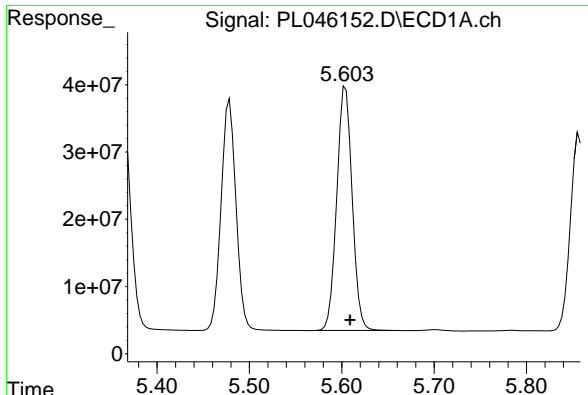
#11 alpha-Chlordane
 R.T.: 6.157 min
 Delta R.T.: -0.003 min
 Response: 115013163
 Conc: 42.63 ng/ml



#12 4,4'-DDE
 R.T.: 5.479 min
 Delta R.T.: -0.005 min
 Response: 383884487
 Conc: 43.73 ng/ml



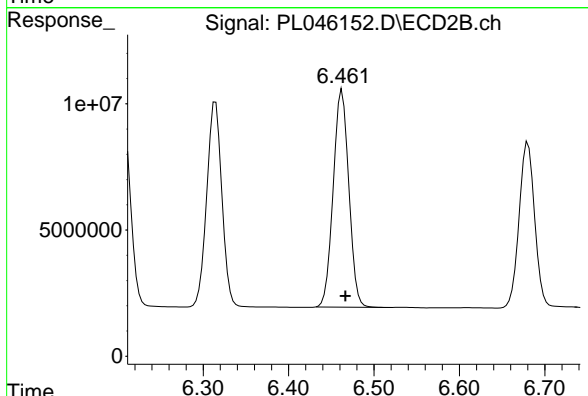
#12 4,4'-DDE
 R.T.: 6.314 min
 Delta R.T.: -0.004 min
 Response: 100106844
 Conc: 42.86 ng/ml



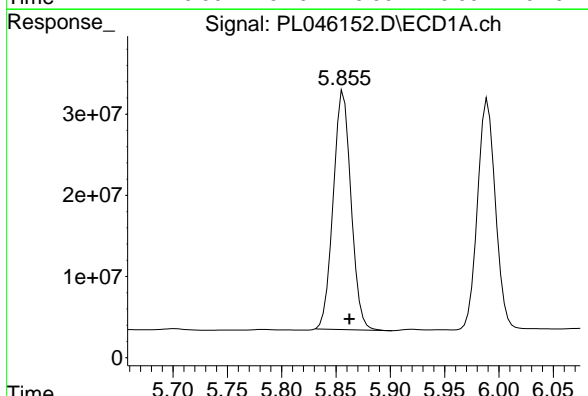
#13 Dieldrin
 R.T.: 5.604 min
 Delta R.T.: -0.005 min
 Response: 421146435
 Conc: 44.06 ng/ml

Instrument :
 ECD_L
ClientSampled :
 SPMS

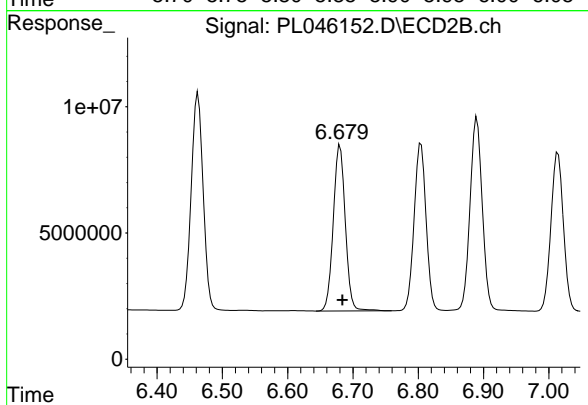
Manual Integrations
APPROVED
 Sohil
 3/20/2019 10:08:35 AM



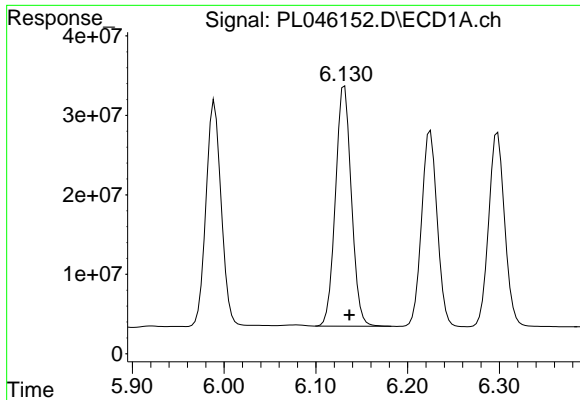
#13 Dieldrin
 R.T.: 6.463 min
 Delta R.T.: -0.004 min
 Response: 109334717
 Conc: 42.55 ng/ml



#14 Endrin
 R.T.: 5.857 min
 Delta R.T.: -0.005 min
 Response: 335539291
 Conc: 37.26 ng/ml



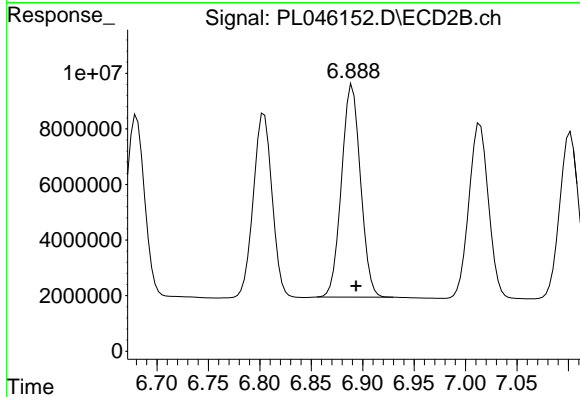
#14 Endrin
 R.T.: 6.680 min
 Delta R.T.: -0.004 min
 Response: 84231491
 Conc: 37.02 ng/ml



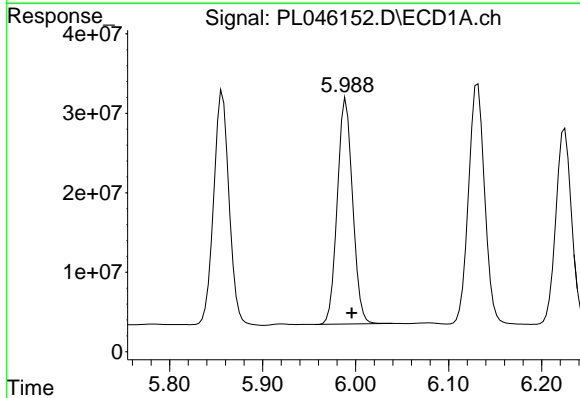
#15 Endosulfan II
 R.T.: 6.131 min
 Delta R.T.: -0.005 min
 Response: 364532464
 Conc: 42.05 ng/ml

Instrument :
 ECD_L
ClientSampled :
 SPMS

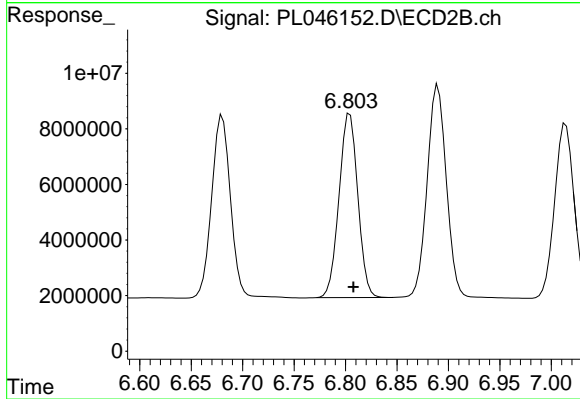
Manual Integrations
APPROVED
 Sohil
 3/20/2019 10:08:35 AM



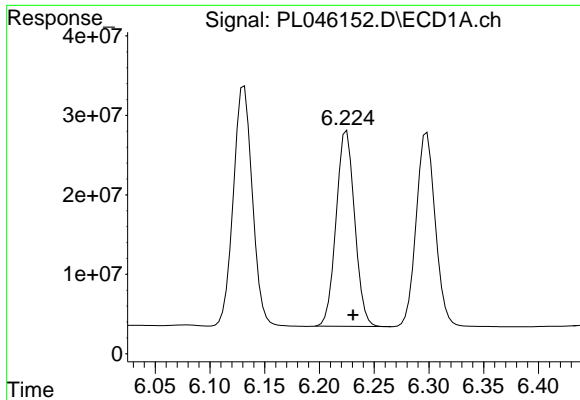
#15 Endosulfan II
 R.T.: 6.890 min
 Delta R.T.: -0.004 min
 Response: 98376697
 Conc: 41.83 ng/ml



#16 4,4'-DDD
 R.T.: 5.990 min
 Delta R.T.: -0.006 min
 Response: 325103159
 Conc: 44.40 ng/ml



#16 4,4'-DDD
 R.T.: 6.804 min
 Delta R.T.: -0.004 min
 Response: 84103028
 Conc: 43.73 ng/ml

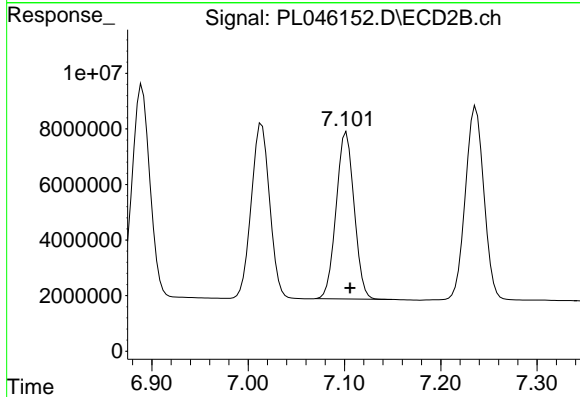


#17 4,4'-DDT

R.T.: 6.225 min
 Delta R.T.: -0.006 min
 Response: 290021316
 Conc: 38.67 ng/ml

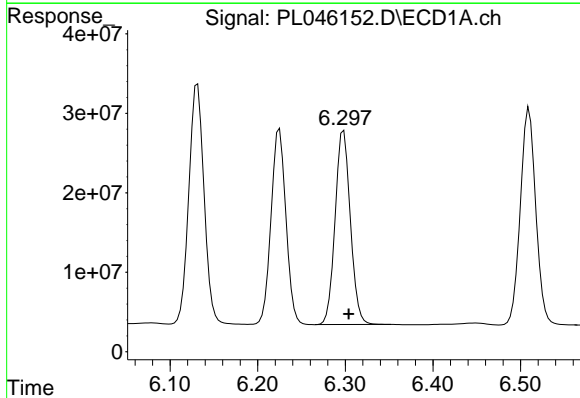
Instrument :
 ECD_L
ClientSampled :
 SPMS

Manual Integrations
APPROVED
 Sohil
 3/20/2019 10:08:35 AM



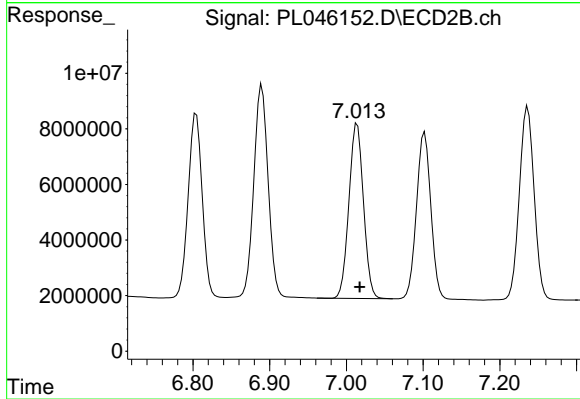
#17 4,4'-DDT

R.T.: 7.102 min
 Delta R.T.: -0.004 min
 Response: 77760782
 Conc: 39.40 ng/ml



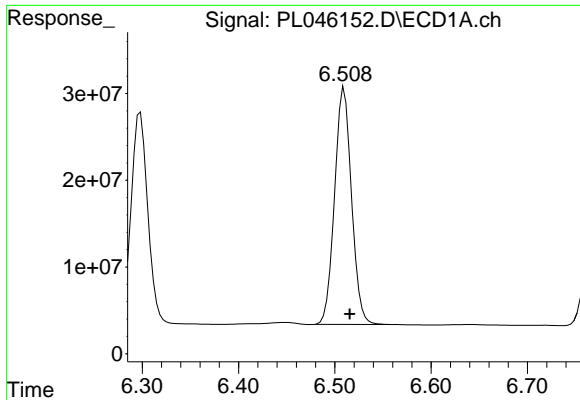
#18 Endrin aldehyde

R.T.: 6.298 min
 Delta R.T.: -0.006 min
 Response: 295479731
 Conc: 40.42 ng/ml



#18 Endrin aldehyde

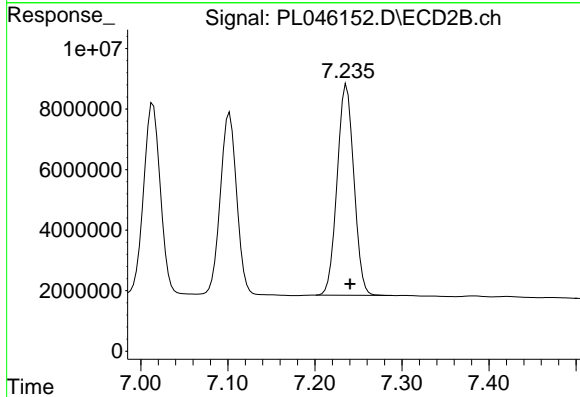
R.T.: 7.014 min
 Delta R.T.: -0.003 min
 Response: 83463666
 Conc: 40.83 ng/ml



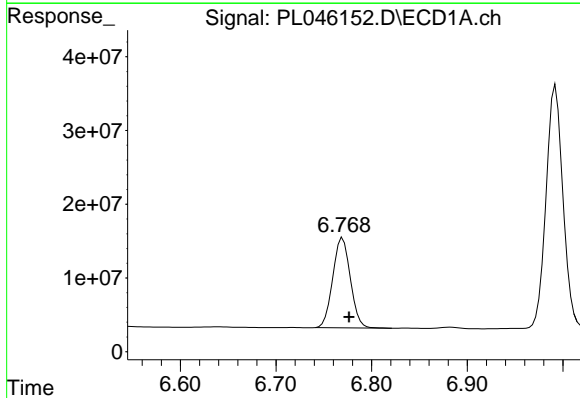
#19 Endosulfan Sulfate
 R.T.: 6.510 min
 Delta R.T.: -0.006 min
 Response: 333937284
 Conc: 41.08 ng/ml

Instrument :
 ECD_L
 ClientSampled :
 SPMS

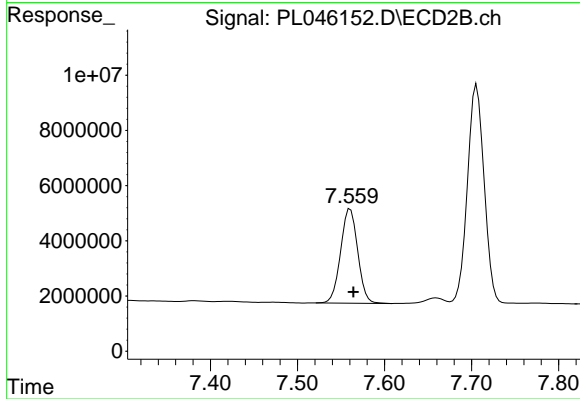
Manual Integrations
 APPROVED
 Sohil
 3/20/2019 10:08:35 AM



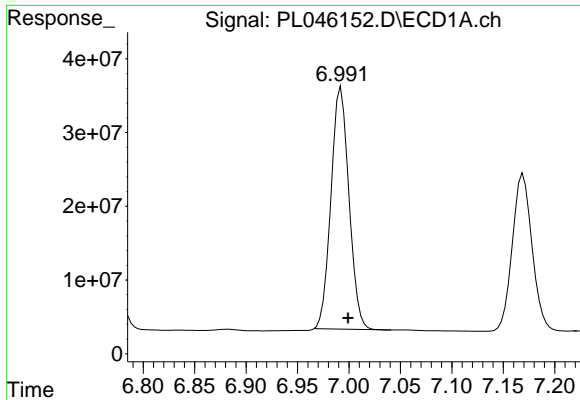
#19 Endosulfan Sulfate
 R.T.: 7.237 min
 Delta R.T.: -0.004 min
 Response: 93197278
 Conc: 41.43 ng/ml



#20 Methoxychlor
 R.T.: 6.770 min
 Delta R.T.: -0.007 min
 Response: 156009894
 Conc: 35.52 ng/ml



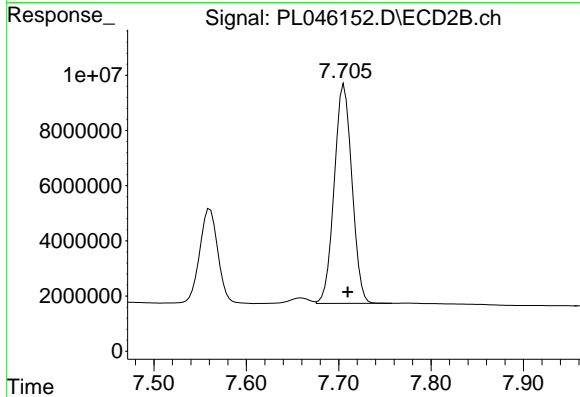
#20 Methoxychlor
 R.T.: 7.561 min
 Delta R.T.: -0.004 min
 Response: 46519905
 Conc: 37.90 ng/ml



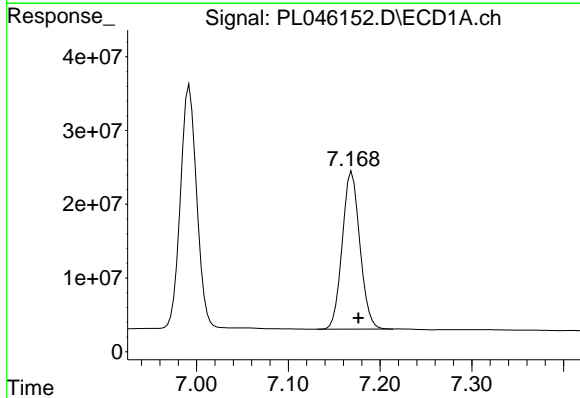
#21 Endrin ketone
 R.T.: 6.992 min
 Delta R.T.: -0.007 min
 Response: 398836386
 Conc: 43.29 ng/ml

Instrument :
 ECD_L
 ClientSampled :
 SPMS

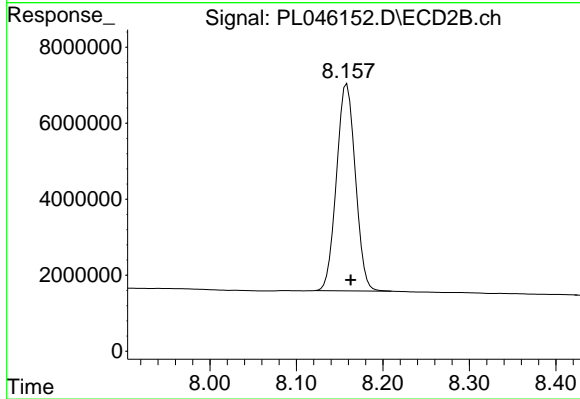
Manual Integrations
 APPROVED
 Sohil
 3/20/2019 10:08:35 AM



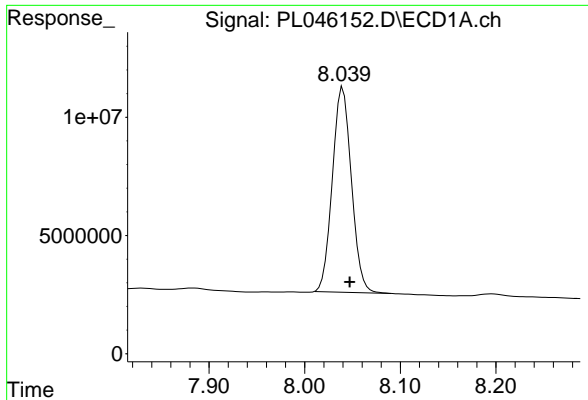
#21 Endrin ketone
 R.T.: 7.706 min
 Delta R.T.: -0.004 min
 Response: 105655122
 Conc: 44.42 ng/ml



#22 Mirex
 R.T.: 7.169 min
 Delta R.T.: -0.007 min
 Response: 284756370
 Conc: 38.27 ng/ml



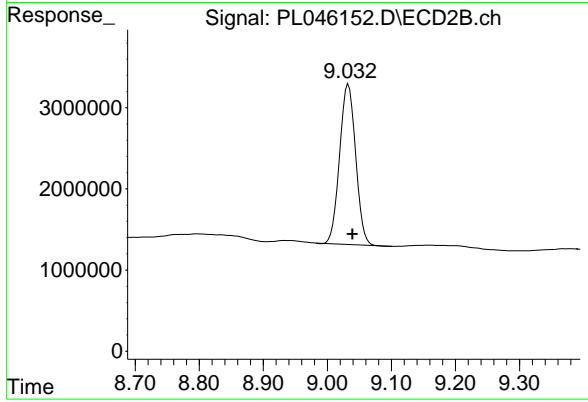
#22 Mirex
 R.T.: 8.158 min
 Delta R.T.: -0.004 min
 Response: 82234704
 Conc: 41.29 ng/ml



#28 Decachlorobiphenyl
R.T.: 8.040 min
Delta R.T.: -0.007 min
Response: 119817440
Conc: 14.32 ng/ml

Instrument :
ECD_L
ClientSampled :
SPMS

Manual Integrations
APPROVED
Sohil
3/20/2019 10:08:35 AM



#28 Decachlorobiphenyl
R.T.: 9.033 min
Delta R.T.: -0.006 min
Response: 34231746
Conc: 14.98 ng/ml