

Data Path : Z:\pestpcbsrv\HPCHEM1\ECD_L\Data\PL031919\
 Data File : PL046161.D
 Signal(s) : Signal #1: ECD1A.ch Signal #2: ECD2B.ch
 Acq On : 19 Mar 2019 18:30
 Operator : AJ\SJ
 Sample : K1971-10
 Misc :
 ALS Vial : 33 Sample Multiplier: 1

Instrument :
 ECD_L
ClientSampleId :
 SB-15(6-7)-031519

Manual Integrations
APPROVED
 Sohil
 3/20/2019 10:08:38 AM

Integration File signal 1: autoint1.e
 Integration File signal 2: autoint2.e
 Quant Time: Mar 20 02:14:18 2019
 Quant Method : Z:\pestpcbsrv\HPCHEM1\ECD_L\methods\PL022719.M
 Quant Title : GC Extractables
 QLast Update : Wed Feb 27 17:00:03 2019
 Response via : Initial Calibration
 Integrator: ChemStation

Volume Inj. : 1 µl
 Signal #1 Phase : ZB-MR2 Signal #2 Phase: ZB-MR1
 Signal #1 Info : 30M x 0.32mm x0.2 Signal #2 Info : 30M x 0.32mm x0.5µm

Compound	RT#1	RT#2	Resp#1	Resp#2	ng/ml	ng/ml

System Monitoring Compounds						
1) SA Tetrachlo...	3.361	3.980	90131033	19051843	13.102m	8.896 #
28) SA Decachlor...	8.044	9.037	71009905	20144650	8.486	8.816

Target Compounds

(f)=RT Delta > 1/2 Window (#)=Amounts differ by > 25% (m)=manual int.

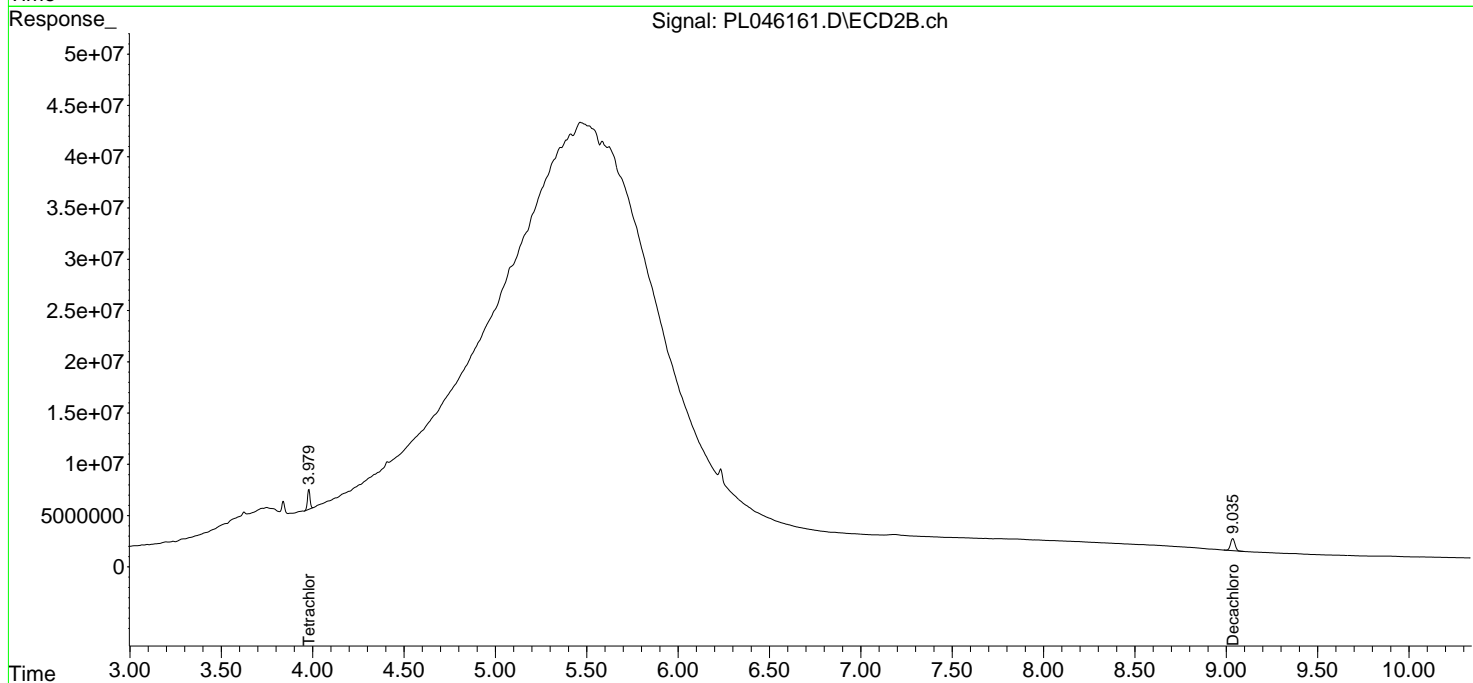
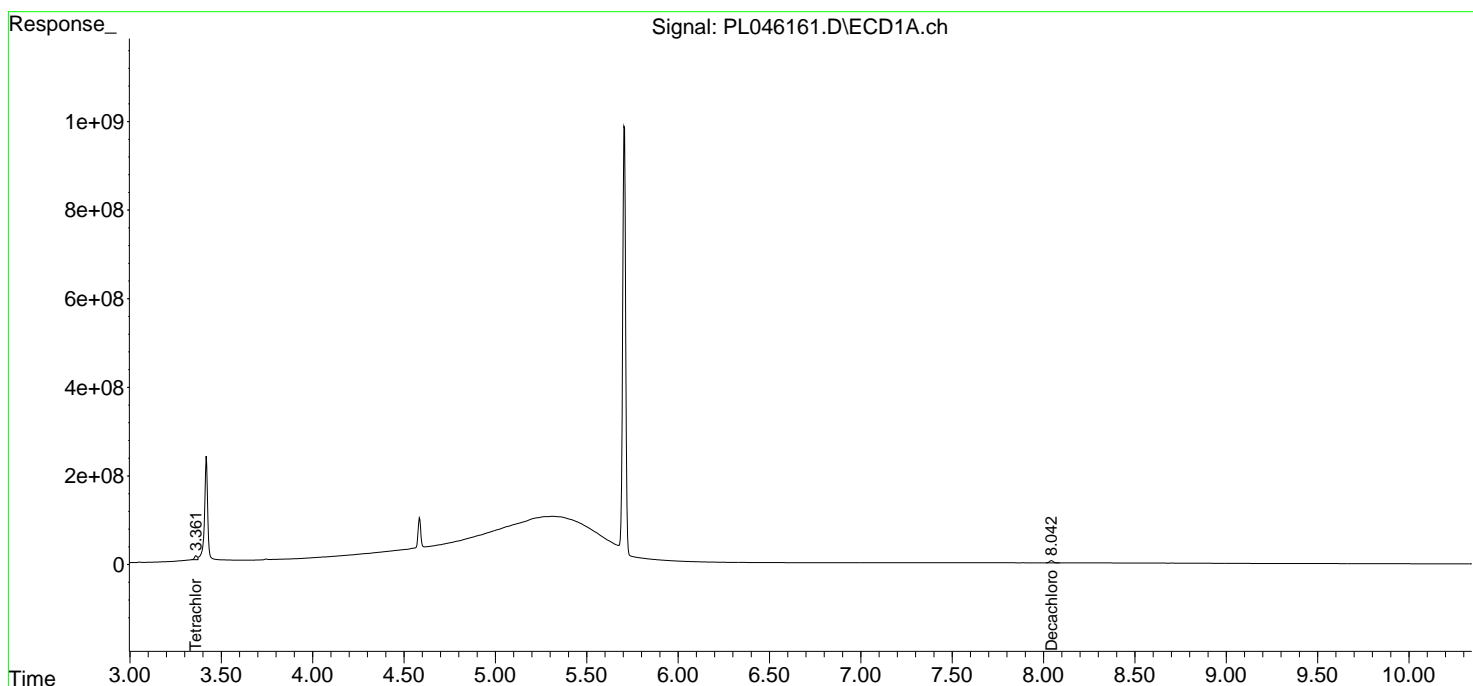
Data Path : Z:\pestpcbsrv\HPCHEM1\ECD_L\Data\PL031919\
 Data File : PL046161.D
 Signal(s) : Signal #1: ECD1A.ch Signal #2: ECD2B.ch
 Acq On : 19 Mar 2019 18:30
 Operator : AJ\SJ
 Sample : K1971-10
 Misc :
 ALS Vial : 33 Sample Multiplier: 1

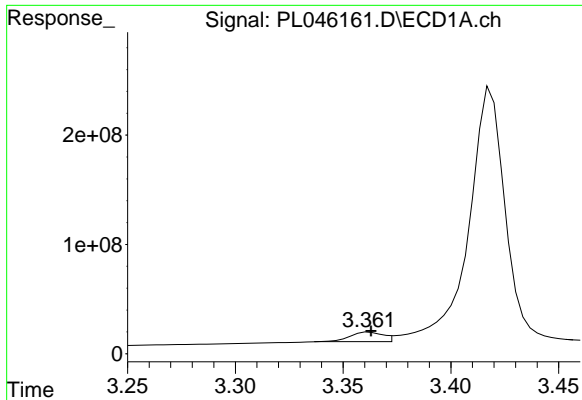
Instrument :
 ECD_L
ClientSampled :
 SB-15(6-7)-031519

Manual Integrations
APPROVED
 Sohil
 3/20/2019 10:08:38 AM

Integration File signal 1: autoint1.e
 Integration File signal 2: autoint2.e
 Quant Time: Mar 20 02:14:18 2019
 Quant Method : Z:\pestpcbsrv\HPCHEM1\ECD_L\methods\PL022719.M
 Quant Title : GC Extractables
 QLast Update : Wed Feb 27 17:00:03 2019
 Response via : Initial Calibration
 Integrator: ChemStation

Volume Inj. : 1 µl
 Signal #1 Phase : ZB-MR2 Signal #2 Phase: ZB-MR1
 Signal #1 Info : 30M x 0.32mm x0.2 Signal #2 Info : 30M x 0.32mm x0.5µm

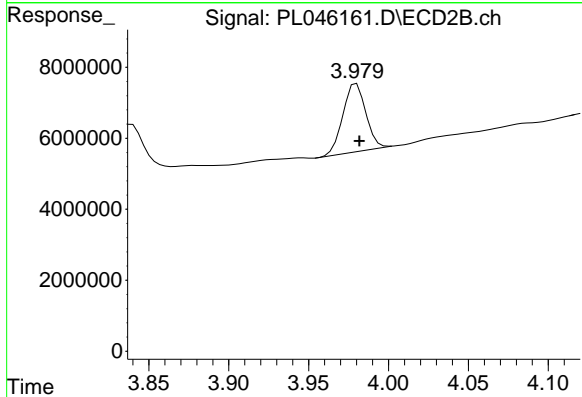




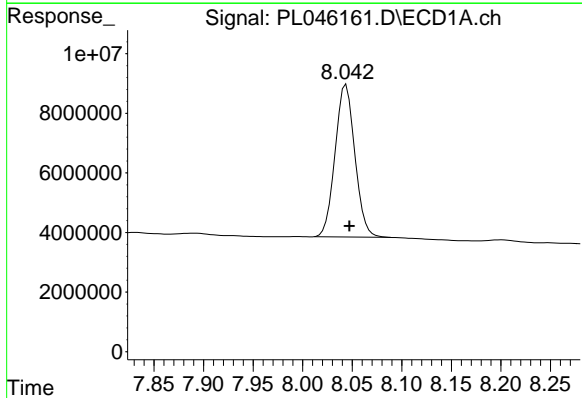
#1 Tetrachloro-m-xylene
 R.T.: 3.361 min
 Delta R.T.: -0.002 min
 Response: 90131033
 Conc: 13.10 ng/ml m

Instrument :
 ECD_L
 ClientSampleId :
 SB-15(6-7)-031519

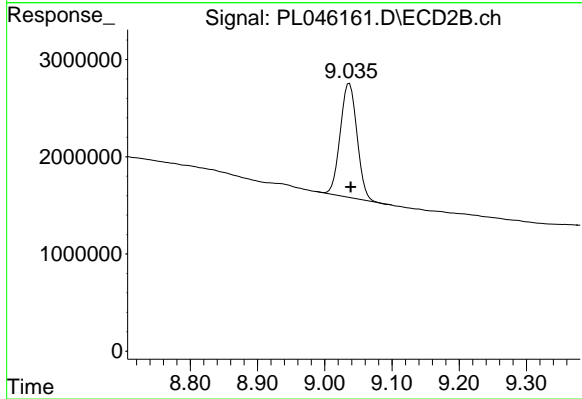
Manual Integrations
 APPROVED
 Sohil
 3/20/2019 10:08:38 AM



#1 Tetrachloro-m-xylene
 R.T.: 3.980 min
 Delta R.T.: -0.002 min
 Response: 19051843
 Conc: 8.90 ng/ml



#28 Decachlorobiphenyl
 R.T.: 8.044 min
 Delta R.T.: -0.003 min
 Response: 71009905
 Conc: 8.49 ng/ml



#28 Decachlorobiphenyl
 R.T.: 9.037 min
 Delta R.T.: -0.002 min
 Response: 20144650
 Conc: 8.82 ng/ml