

Data Path : Z:\pestpcbsrv\HPCHEM1\ECD_L\Data\PL031919\
 Data File : PL046163.D
 Signal(s) : Signal #1: ECD1A.ch Signal #2: ECD2B.ch
 Acq On : 19 Mar 2019 18:59
 Operator : AJ\SJ
 Sample : PEM
 Misc :
 ALS Vial : 3 Sample Multiplier: 1

Instrument :
 ECD_L
 ClientSampled :
 PEM

Manual Integrations
 APPROVED

Sohil
 3/20/2019 10:08:40 AM

Integration File signal 1: autoint1.e
 Integration File signal 2: autoint2.e
 Quant Time: Mar 20 02:14:43 2019
 Quant Method : Z:\pestpcbsrv\HPCHEM1\ECD_L\methods\PL022719.M
 Quant Title : GC Extractables
 QLast Update : Wed Feb 27 17:00:03 2019
 Response via : Initial Calibration
 Integrator: ChemStation

Volume Inj. : 1 µl
 Signal #1 Phase : ZB-MR2 Signal #2 Phase: ZB-MR1
 Signal #1 Info : 30M x 0.32mm x0.2 Signal #2 Info : 30M x 0.32mm x0.5µm

	Compound	RT#1	RT#2	Resp#1	Resp#2	ng/ml	ng/ml

System Monitoring Compounds							
1)	SA Tetrachlo...	3.362	3.980	129.1E6	38697837	18.774	18.070
28)	SA Decachlor...	8.042	9.035	116.2E6	34941339	13.892	15.292
Target Compounds							
2)	A alpha-BHC	3.791	4.370	87904253	23858417	7.914	7.852
3)	MA gamma-BHC...	4.068	4.654	74309505	22404289	7.352	7.932
6)	B beta-BHC	4.321	4.827	35425871	10684021	8.265	8.413
12)	B 4,4'-DDE	5.478	6.314	881666	657422	0.100m	0.281m#
14)	MA Endrin	5.858	6.682	255.0E6	62698503	28.318	27.556
16)	A 4,4'-DDD	5.991	6.806	21280313	6230262	2.906	3.240
17)	MA 4,4'-DDT	6.227	7.104	540.6E6	140.7E6	72.080	71.285
18)	B Endrin al...	6.299	7.015	17006096	5559513	2.327	2.720
20)	A Methoxychlor	6.771	7.563	723.7E6	201.8E6	164.791	164.370
21)	B Endrin ke...	6.993	7.708	34466198	8222579	3.741	3.457

(f)=RT Delta > 1/2 Window (#)=Amounts differ by > 25% (m)=manual int.

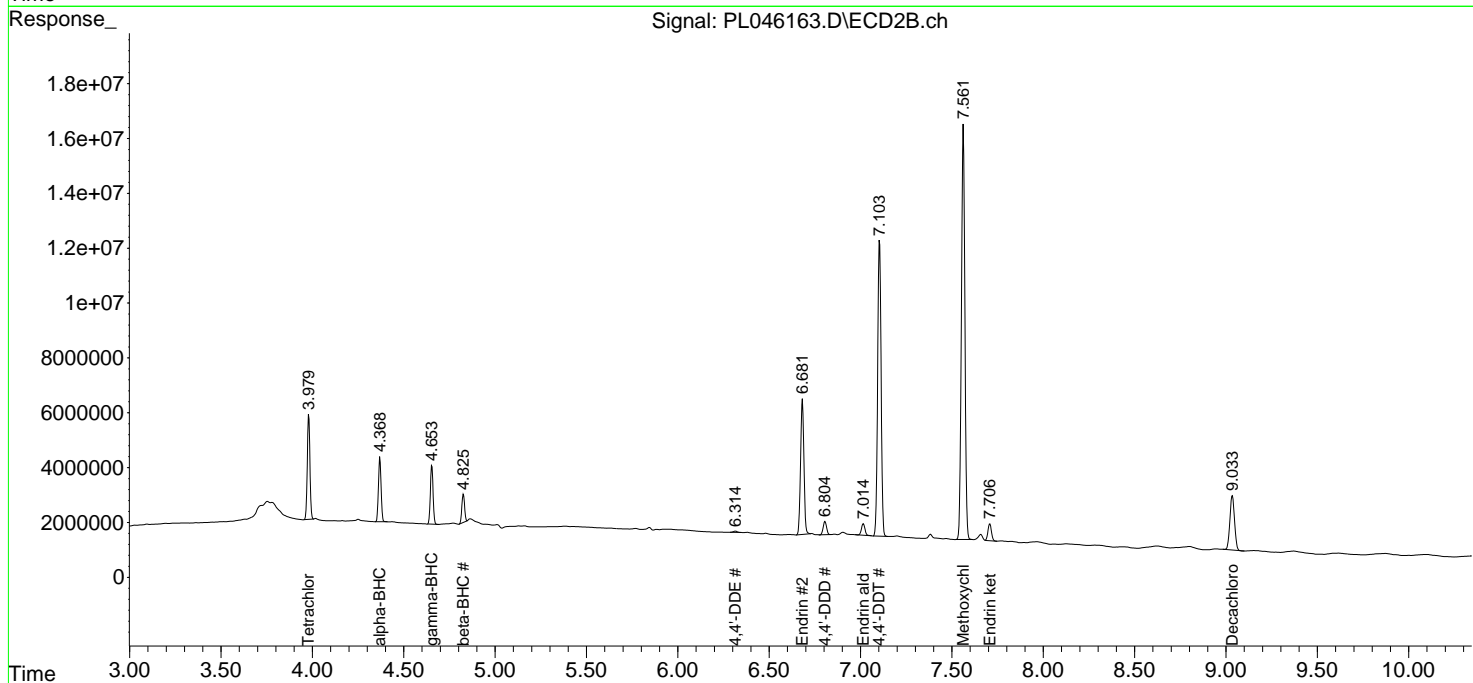
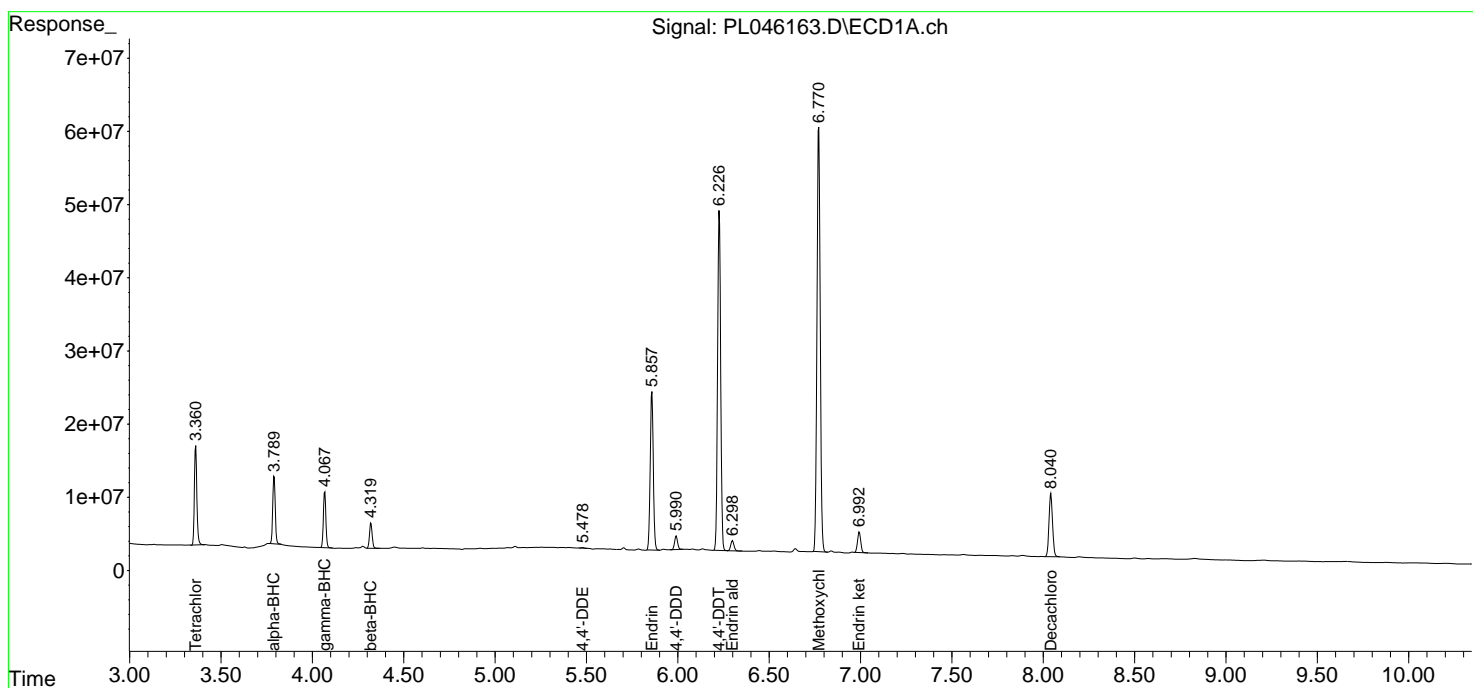
Data Path : Z:\pestpcbsrv\HPCHEM1\ECD_L\Data\PL031919\
 Data File : PL046163.D
 Signal(s) : Signal #1: ECD1A.ch Signal #2: ECD2B.ch
 Acq On : 19 Mar 2019 18:59
 Operator : AJ\SJ
 Sample : PEM
 Misc :
 ALS Vial : 3 Sample Multiplier: 1

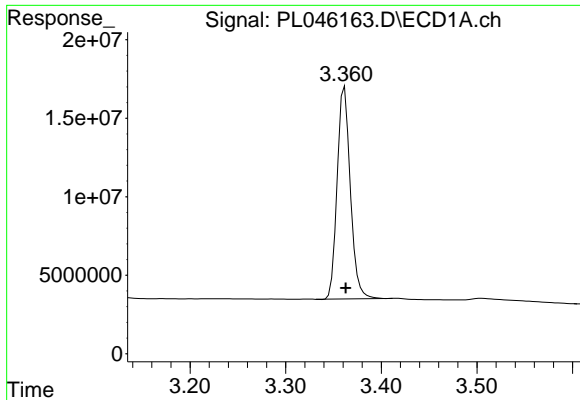
Instrument :
 ECD_L
 ClientSampled :
 PEM

Manual Integrations
APPROVED
 Sohil
 3/20/2019 10:08:40 AM

Integration File signal 1: autoint1.e
 Integration File signal 2: autoint2.e
 Quant Time: Mar 20 02:14:43 2019
 Quant Method : Z:\pestpcbsrv\HPCHEM1\ECD_L\methods\PL022719.M
 Quant Title : GC Extractables
 QLast Update : Wed Feb 27 17:00:03 2019
 Response via : Initial Calibration
 Integrator: ChemStation

Volume Inj. : 1 µl
 Signal #1 Phase : ZB-MR2 Signal #2 Phase: ZB-MR1
 Signal #1 Info : 30M x 0.32mm x0.2 Signal #2 Info : 30M x 0.32mm x0.5µm

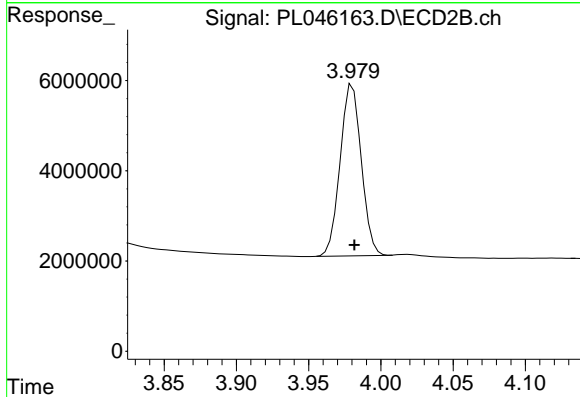




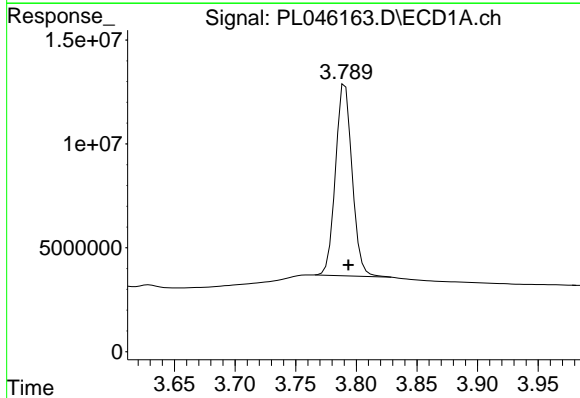
#1 Tetrachloro-m-xylene
 R.T.: 3.362 min
 Delta R.T.: -0.001 min
 Response: 129149855
 Conc: 18.77 ng/ml

Instrument :
 ECD_L
 ClientSampled :
 PEM

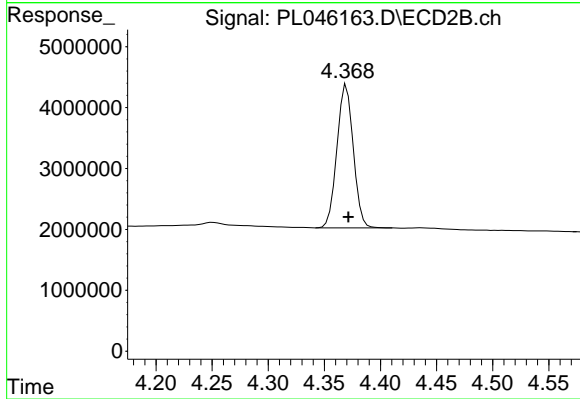
Manual Integrations
 APPROVED
 Sohil
 3/20/2019 10:08:40 AM



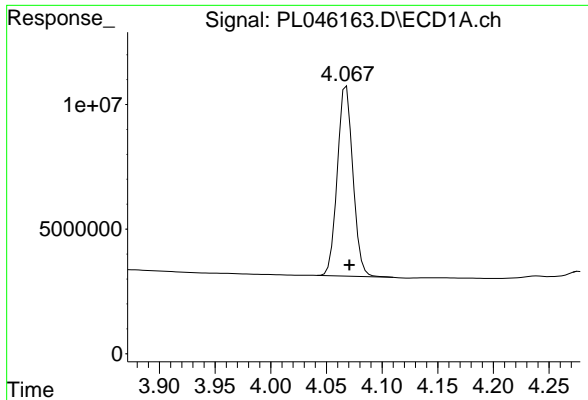
#1 Tetrachloro-m-xylene
 R.T.: 3.980 min
 Delta R.T.: -0.001 min
 Response: 38697837
 Conc: 18.07 ng/ml



#2 alpha-BHC
 R.T.: 3.791 min
 Delta R.T.: -0.003 min
 Response: 87904253
 Conc: 7.91 ng/ml



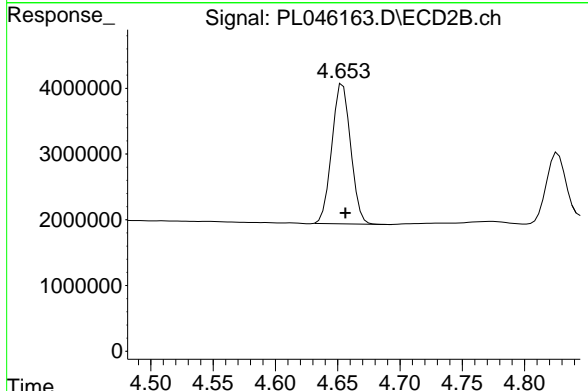
#2 alpha-BHC
 R.T.: 4.370 min
 Delta R.T.: -0.002 min
 Response: 23858417
 Conc: 7.85 ng/ml



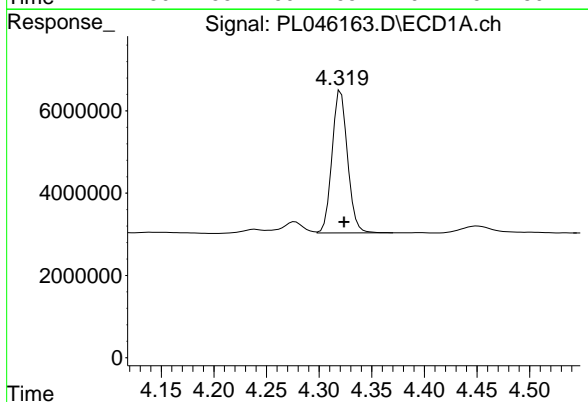
#3 gamma-BHC (Lindane)
 R.T.: 4.068 min
 Delta R.T.: -0.003 min
 Response: 74309505
 Conc: 7.35 ng/ml

Instrument :
 ECD_L
 ClientSampled :
 PEM

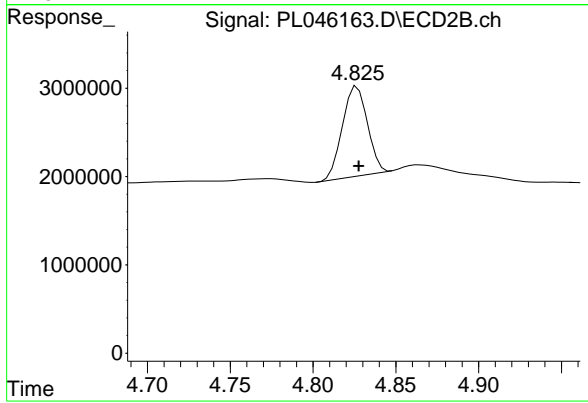
Manual Integrations
 APPROVED
 Sohil
 3/20/2019 10:08:40 AM



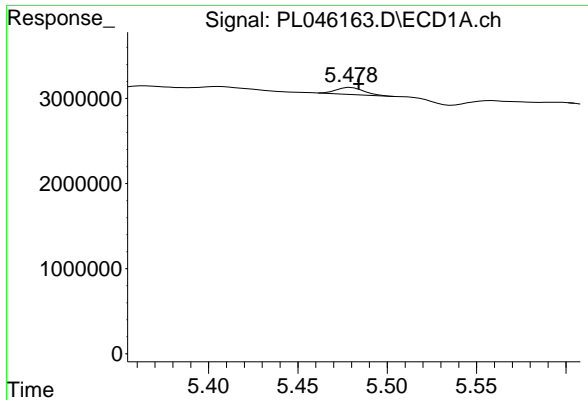
#3 gamma-BHC (Lindane)
 R.T.: 4.654 min
 Delta R.T.: -0.002 min
 Response: 22404289
 Conc: 7.93 ng/ml



#6 beta-BHC
 R.T.: 4.321 min
 Delta R.T.: -0.003 min
 Response: 35425871
 Conc: 8.27 ng/ml



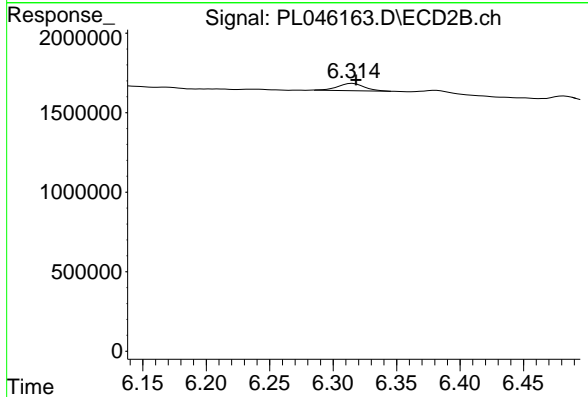
#6 beta-BHC
 R.T.: 4.827 min
 Delta R.T.: 0.000 min
 Response: 10684021
 Conc: 8.41 ng/ml



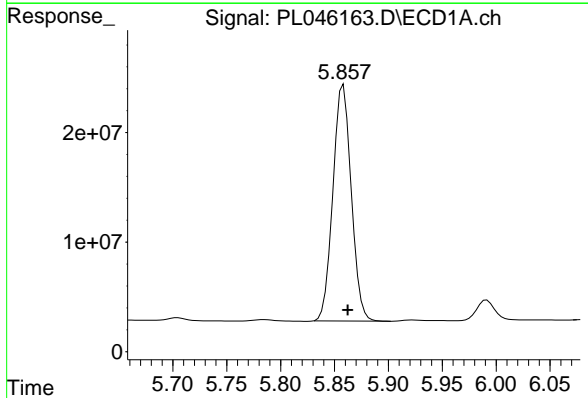
#12 4,4'-DDE
 R.T.: 5.478 min
 Delta R.T.: -0.006 min
 Response: 881666
 Conc: 0.10 ng/ml m

Instrument :
 ECD_L
 ClientSampled :
 PEM

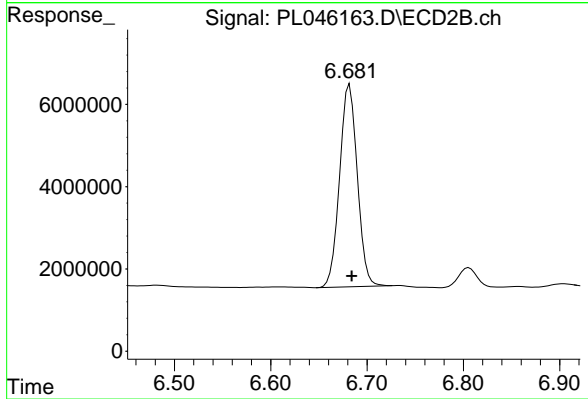
Manual Integrations
APPROVED
 Sohil
 3/20/2019 10:08:40 AM



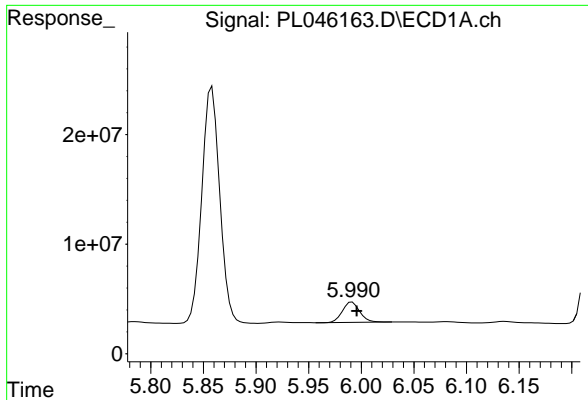
#12 4,4'-DDE
 R.T.: 6.314 min
 Delta R.T.: -0.004 min
 Response: 657422
 Conc: 0.28 ng/ml m



#14 Endrin
 R.T.: 5.858 min
 Delta R.T.: -0.004 min
 Response: 255028538
 Conc: 28.32 ng/ml



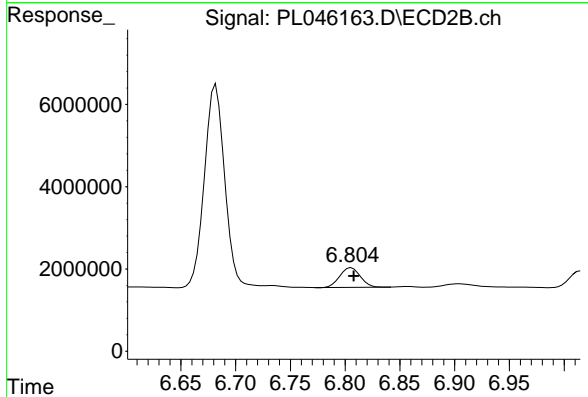
#14 Endrin
 R.T.: 6.682 min
 Delta R.T.: -0.002 min
 Response: 62698503
 Conc: 27.56 ng/ml



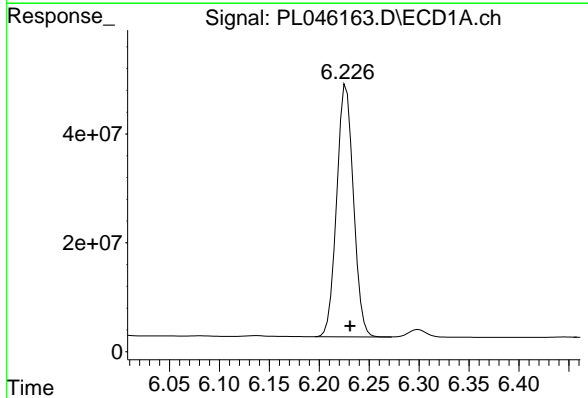
#16 4,4'-DDD
 R.T.: 5.991 min
 Delta R.T.: -0.004 min
 Response: 21280313
 Conc: 2.91 ng/ml

Instrument :
 ECD_L
 ClientSampled :
 PEM

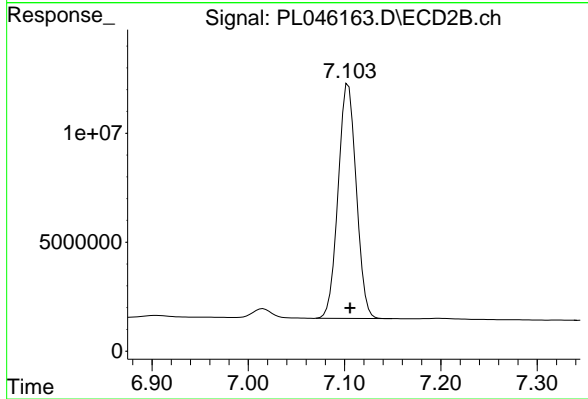
Manual Integrations
 APPROVED
 Sohil
 3/20/2019 10:08:40 AM



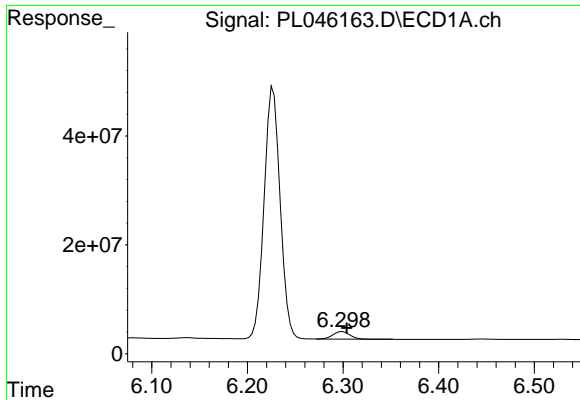
#16 4,4'-DDD
 R.T.: 6.806 min
 Delta R.T.: -0.002 min
 Response: 6230262
 Conc: 3.24 ng/ml



#17 4,4'-DDT
 R.T.: 6.227 min
 Delta R.T.: -0.004 min
 Response: 540609569
 Conc: 72.08 ng/ml



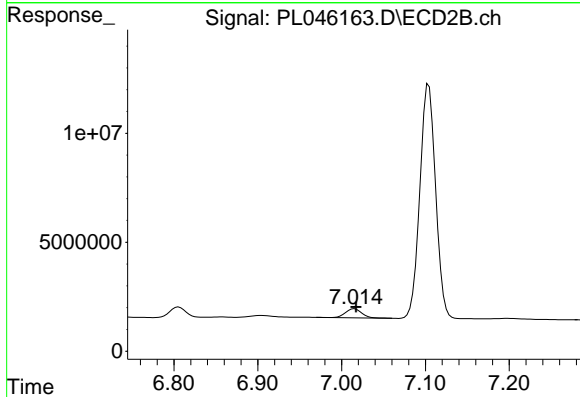
#17 4,4'-DDT
 R.T.: 7.104 min
 Delta R.T.: -0.002 min
 Response: 140677805
 Conc: 71.29 ng/ml



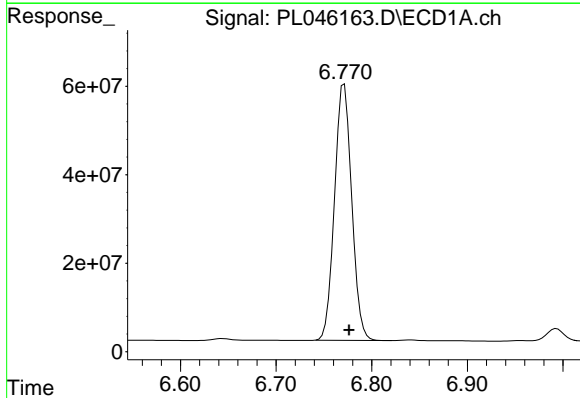
#18 Endrin aldehyde
 R.T.: 6.299 min
 Delta R.T.: -0.005 min
 Response: 17006096
 Conc: 2.33 ng/ml

Instrument :
 ECD_L
 ClientSampled :
 PEM

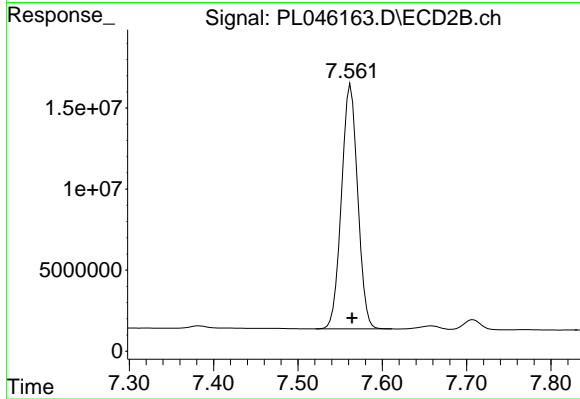
Manual Integrations
 APPROVED
 Sohil
 3/20/2019 10:08:40 AM



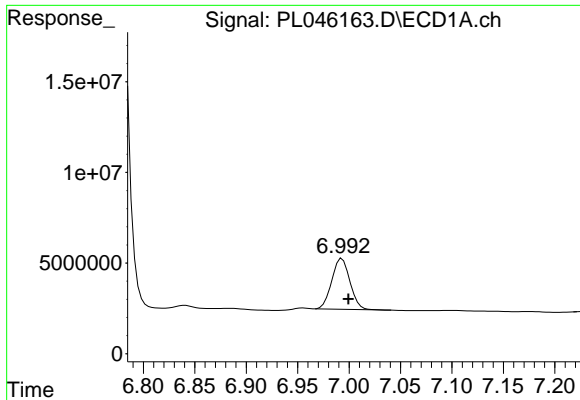
#18 Endrin aldehyde
 R.T.: 7.015 min
 Delta R.T.: -0.002 min
 Response: 5559513
 Conc: 2.72 ng/ml



#20 Methoxychlor
 R.T.: 6.771 min
 Delta R.T.: -0.005 min
 Response: 723715311
 Conc: 164.79 ng/ml



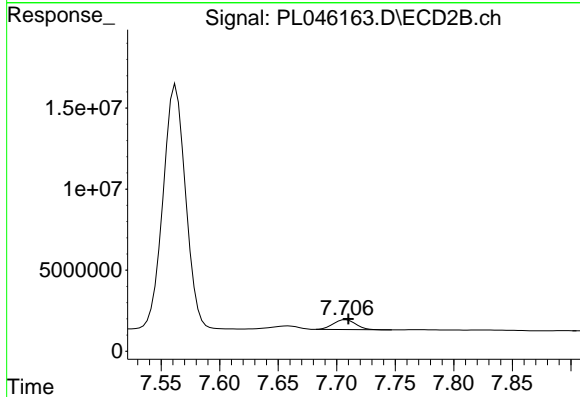
#20 Methoxychlor
 R.T.: 7.563 min
 Delta R.T.: -0.002 min
 Response: 201750767
 Conc: 164.37 ng/ml



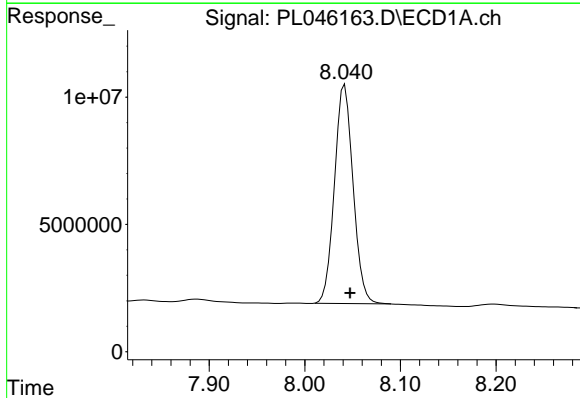
#21 Endrin ketone
 R.T.: 6.993 min
 Delta R.T.: -0.006 min
 Response: 34466198
 Conc: 3.74 ng/ml

Instrument :
 ECD_L
 ClientSampled :
 PEM

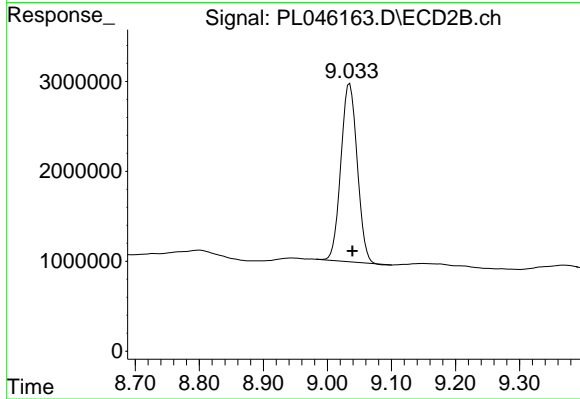
Manual Integrations
 APPROVED
 Sohil
 3/20/2019 10:08:40 AM



#21 Endrin ketone
 R.T.: 7.708 min
 Delta R.T.: -0.002 min
 Response: 8222579
 Conc: 3.46 ng/ml



#28 Decachlorobiphenyl
 R.T.: 8.042 min
 Delta R.T.: -0.006 min
 Response: 116240595
 Conc: 13.89 ng/ml



#28 Decachlorobiphenyl
 R.T.: 9.035 min
 Delta R.T.: -0.004 min
 Response: 34941339
 Conc: 15.29 ng/ml