

Data Path : Z:\pestpcbsrv\HPCHEM1\ECD_L\Data\PL031919\
 Data File : PL046164.D
 Signal(s) : Signal #1: ECD1A.ch Signal #2: ECD2B.ch
 Acq On : 19 Mar 2019 19:13
 Operator : AJ\SJ
 Sample : PSTDCCC050
 Misc :
 ALS Vial : 4 Sample Multiplier: 1

Instrument :
 ECD_L
ClientSampleId :
 PSTDCCC050

Manual Integrations
APPROVED
 Sohil
 3/20/2019 10:08:42 AM

Integration File signal 1: autoint1.e
 Integration File signal 2: autoint2.e
 Quant Time: Mar 20 02:14:55 2019
 Quant Method : Z:\pestpcbsrv\HPCHEM1\ECD_L\methods\PL022719.M
 Quant Title : GC Extractables
 QLast Update : Wed Feb 27 17:00:03 2019
 Response via : Initial Calibration
 Integrator: ChemStation

Volume Inj. : 1 µl
 Signal #1 Phase : ZB-MR2 Signal #2 Phase: ZB-MR1
 Signal #1 Info : 30M x 0.32mm x0.2 Signal #2 Info : 30M x 0.32mm x0.5µm

Compound	RT#1	RT#2	Resp#1	Resp#2	ng/ml	ng/ml

System Monitoring Compounds						
1) SA Tetrachlo...	3.361	3.980	359.4E6	111.2E6	52.245	51.932
2) SA Decachlor...	8.040	9.034	314.7E6	91853655	37.611m	40.200m
Target Compounds						
2) A alpha-BHC	3.791	4.370	586.6E6	159.6E6	52.810	52.513
3) MA gamma-BHC...	4.068	4.654	536.6E6	146.4E6	53.090	51.833
4) MA Heptachlor	4.356	5.161	514.1E6	140.9E6	48.722	47.374
5) MB Aldrin	4.596	5.465	485.5E6	126.7E6	49.914	46.917
6) B beta-BHC	4.320	4.827	213.0E6	65324569	49.703	51.438
7) B delta-BHC	4.516	5.042	483.4E6	123.0E6	50.578	57.166
8) B Heptachlo...	5.032	5.851	444.3E6	119.5E6	47.607	49.749
9) A Endosulfan I	5.365	6.207	390.7E6	110.2E6	43.713	44.262
10) B gamma-Chl...	5.256	6.085	432.3E6	122.4E6	44.173	45.625
11) B alpha-Chl...	5.312	6.158	417.8E6	119.7E6	43.081	44.384
12) B 4,4'-DDE	5.479	6.316	387.8E6	102.3E6	44.172	43.775
13) MA Dieldrin	5.604	6.464	438.0E6	113.7E6	45.827	44.265
14) MA Endrin	5.858	6.681	329.1E6	77461383	36.548	34.045
15) B Endosulfa...	6.132	6.891	377.8E6	97792675	43.577	41.585
16) A 4,4'-DDD	5.990	6.805	341.7E6	83886226	46.672	43.621
17) MA 4,4'-DDT	6.226	7.103	286.5E6	73024137	38.197	37.003
18) B Endrin al...	6.299	7.015	314.0E6	85885643	42.955	42.014
19) B Endosulfa...	6.510	7.238	332.7E6	93550959	40.932	41.587
20) A Methoxychlor	6.770	7.561	146.3E6	45365587	33.313	36.960
21) B Endrin ke...	6.994	7.707	403.5E6	106.2E6	43.801	44.646
22) Mirex	7.171	8.160	273.9E6	82557903	36.808	41.451

(f)=RT Delta > 1/2 Window (#)=Amounts differ by > 25% (m)=manual int.

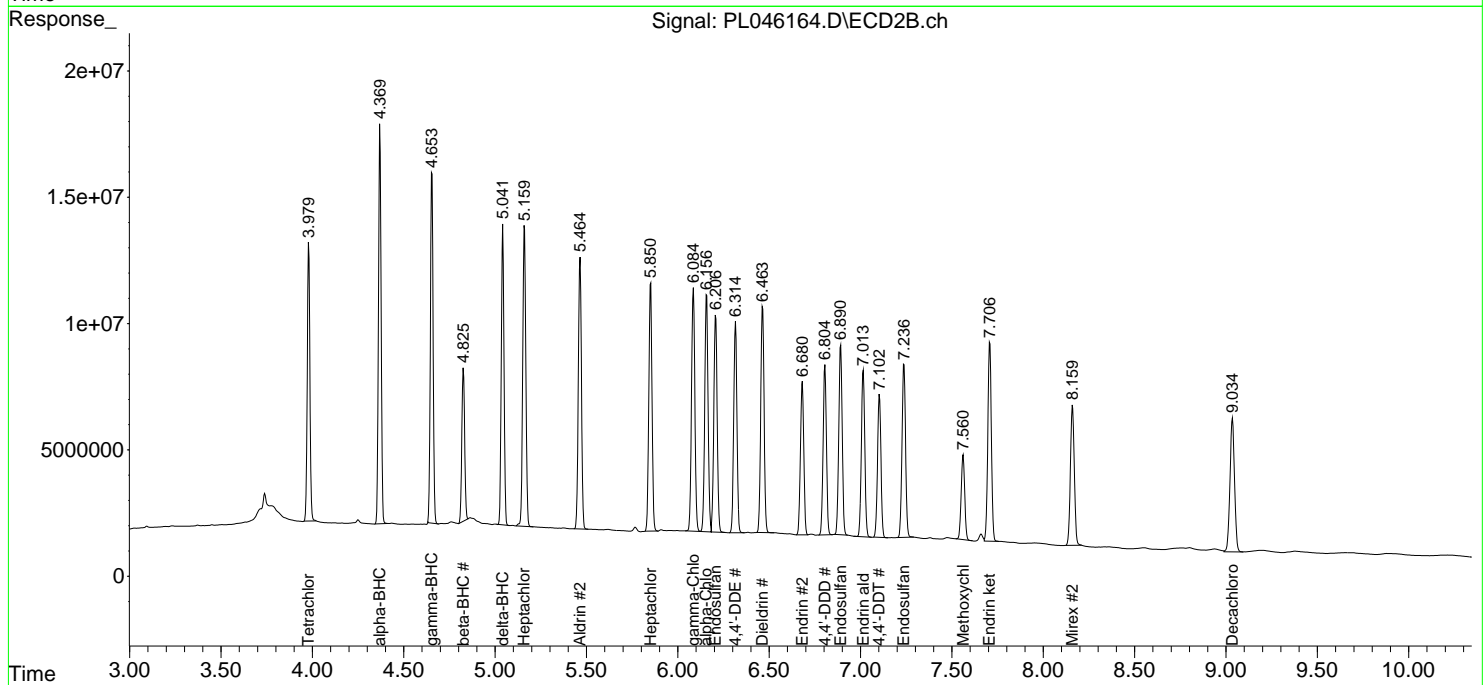
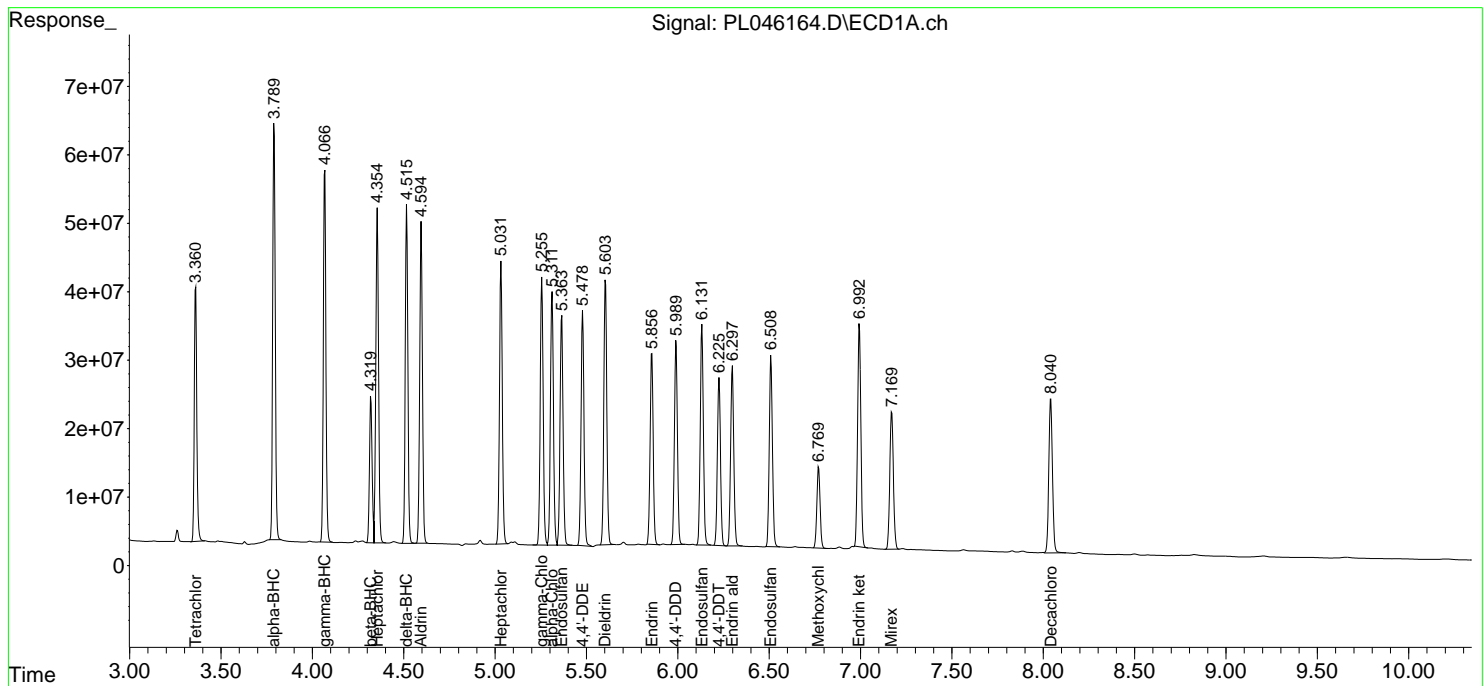
Data Path : Z:\pestpcbsrv\HPCHEM1\ECD_L\Data\PL031919\
 Data File : PL046164.D
 Signal(s) : Signal #1: ECD1A.ch Signal #2: ECD2B.ch
 Acq On : 19 Mar 2019 19:13
 Operator : AJ\SJ
 Sample : PSTDCCC050
 Misc :
 ALS Vial : 4 Sample Multiplier: 1

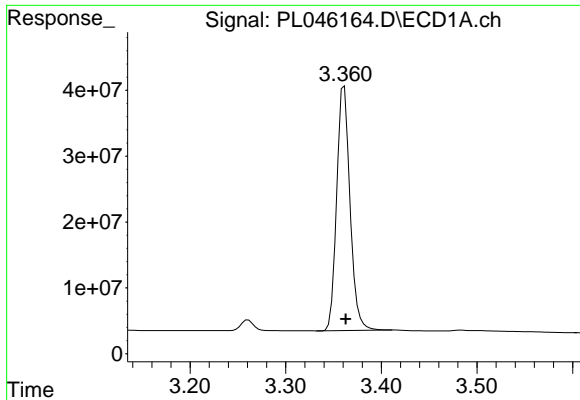
Instrument :
 ECD_L
 ClientSampled :
 PSTDCCC050

Manual Integrations
APPROVED
 Sohil
 3/20/2019 10:08:42 AM

Integration File signal 1: autoint1.e
 Integration File signal 2: autoint2.e
 Quant Time: Mar 20 02:14:55 2019
 Quant Method : Z:\pestpcbsrv\HPCHEM1\ECD_L\methods\PL022719.M
 Quant Title : GC Extractables
 QLast Update : Wed Feb 27 17:00:03 2019
 Response via : Initial Calibration
 Integrator: ChemStation

Volume Inj. : 1 µl
 Signal #1 Phase : ZB-MR2 Signal #2 Phase: ZB-MR1
 Signal #1 Info : 30M x 0.32mm x0.2 Signal #2 Info : 30M x 0.32mm x0.5µm

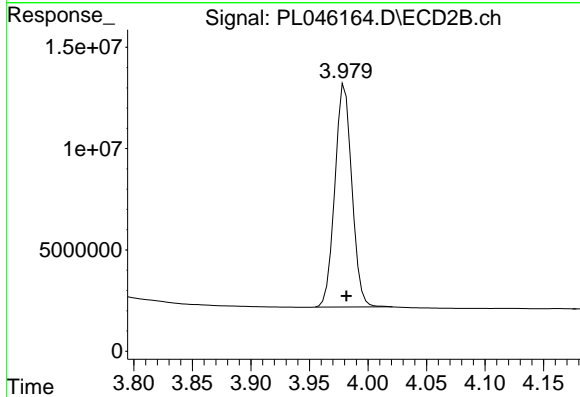




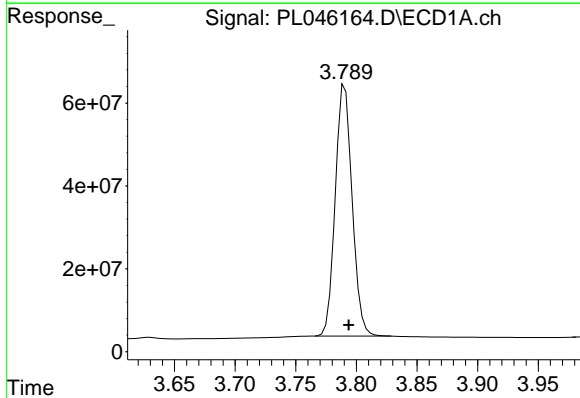
#1 Tetrachloro-m-xylene
 R.T.: 3.361 min
 Delta R.T.: -0.002 min
 Response: 359409944
 Conc: 52.25 ng/ml

Instrument :
 ECD_L
 ClientSampleId :
 PSTDCCC050

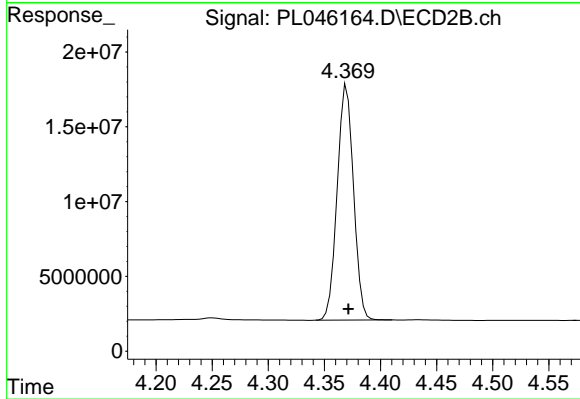
Manual Integrations
 APPROVED
 Sohil
 3/20/2019 10:08:42 AM



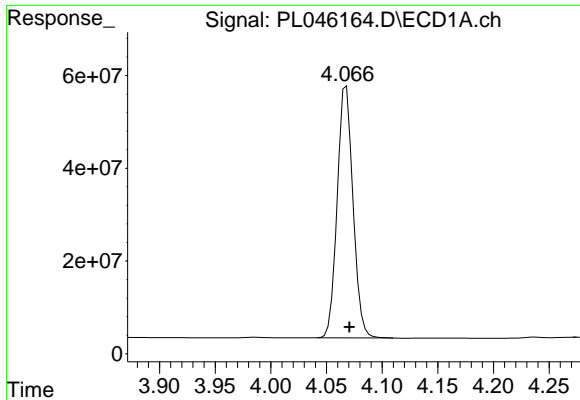
#1 Tetrachloro-m-xylene
 R.T.: 3.980 min
 Delta R.T.: -0.001 min
 Response: 111213290
 Conc: 51.93 ng/ml



#2 alpha-BHC
 R.T.: 3.791 min
 Delta R.T.: -0.003 min
 Response: 586572595
 Conc: 52.81 ng/ml



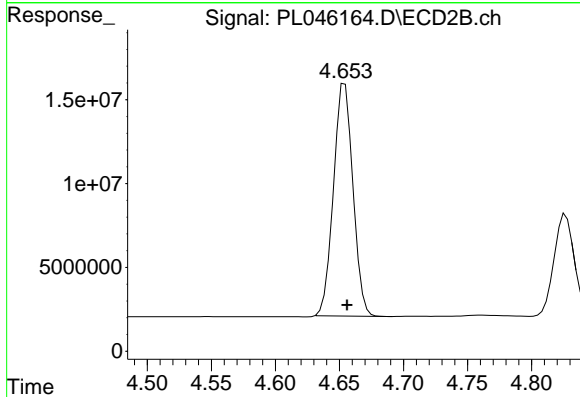
#2 alpha-BHC
 R.T.: 4.370 min
 Delta R.T.: -0.001 min
 Response: 159570607
 Conc: 52.51 ng/ml



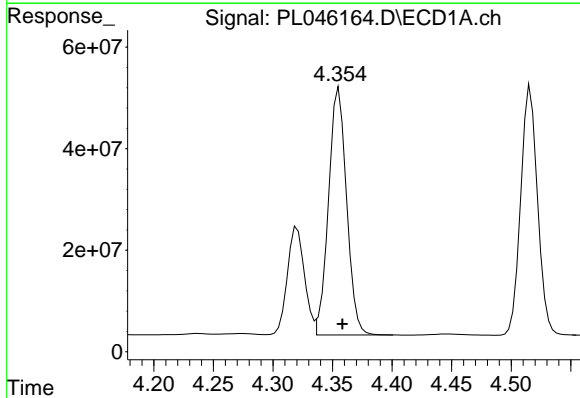
#3 gamma-BHC (Lindane)
 R.T.: 4.068 min
 Delta R.T.: -0.003 min
 Response: 536594345
 Conc: 53.09 ng/ml

Instrument :
 ECD_L
 ClientSampleId :
 PSTDCCC050

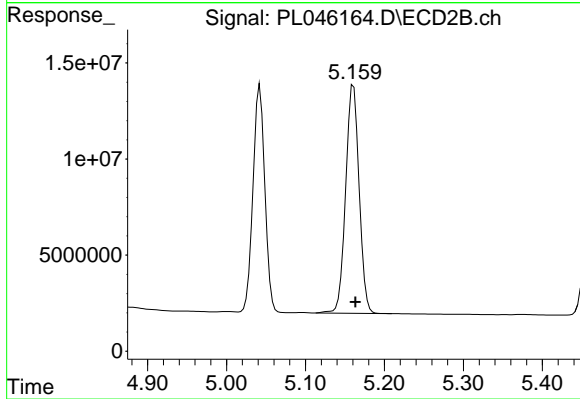
Manual Integrations
 APPROVED
 Sohil
 3/20/2019 10:08:42 AM



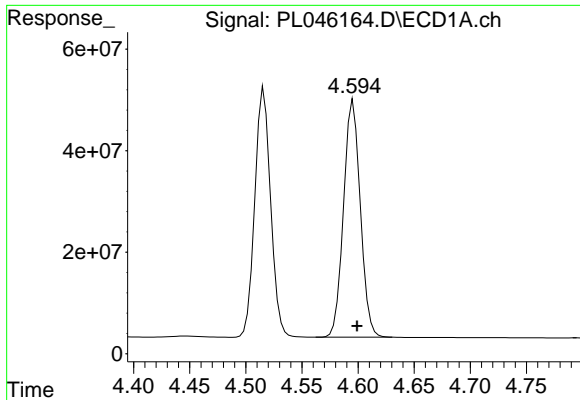
#3 gamma-BHC (Lindane)
 R.T.: 4.654 min
 Delta R.T.: -0.002 min
 Response: 146409567
 Conc: 51.83 ng/ml



#4 Heptachlor
 R.T.: 4.356 min
 Delta R.T.: -0.003 min
 Response: 514132014
 Conc: 48.72 ng/ml



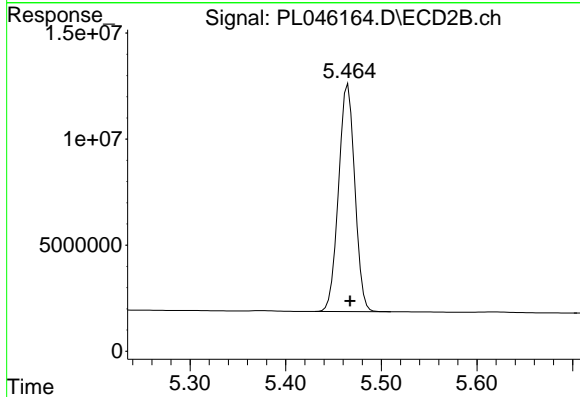
#4 Heptachlor
 R.T.: 5.161 min
 Delta R.T.: -0.002 min
 Response: 140935254
 Conc: 47.37 ng/ml



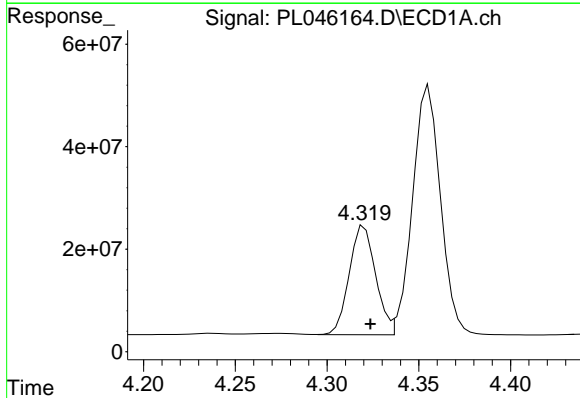
#5 Aldrin
 R.T.: 4.596 min
 Delta R.T.: -0.004 min
 Response: 485487898
 Conc: 49.91 ng/ml

Instrument :
 ECD_L
 ClientSampleId :
 PSTDCCC050

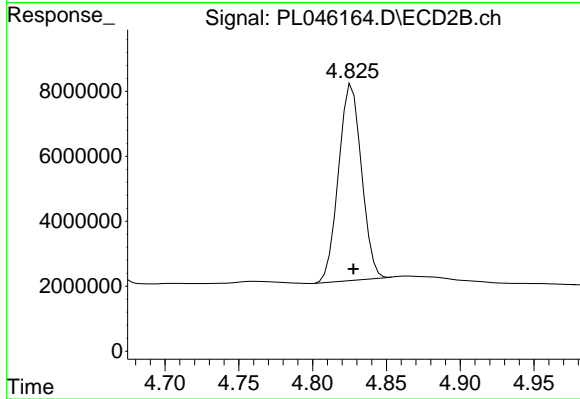
Manual Integrations
 APPROVED
 Sohil
 3/20/2019 10:08:42 AM



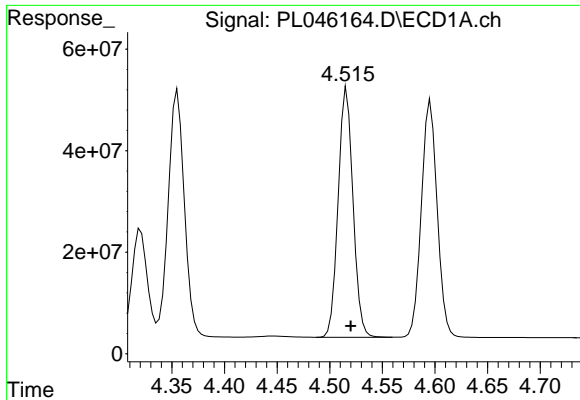
#5 Aldrin
 R.T.: 5.465 min
 Delta R.T.: -0.002 min
 Response: 126720646
 Conc: 46.92 ng/ml



#6 beta-BHC
 R.T.: 4.320 min
 Delta R.T.: -0.003 min
 Response: 213028630
 Conc: 49.70 ng/ml



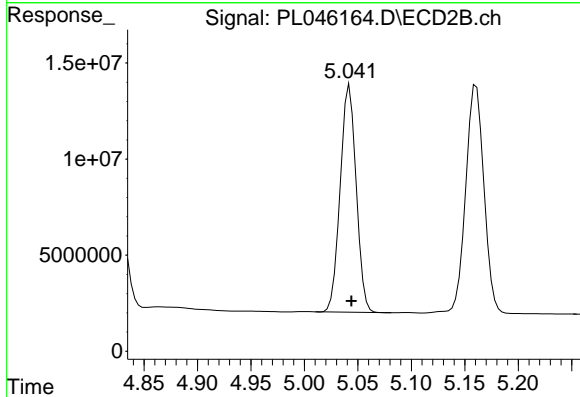
#6 beta-BHC
 R.T.: 4.827 min
 Delta R.T.: -0.001 min
 Response: 65324569
 Conc: 51.44 ng/ml



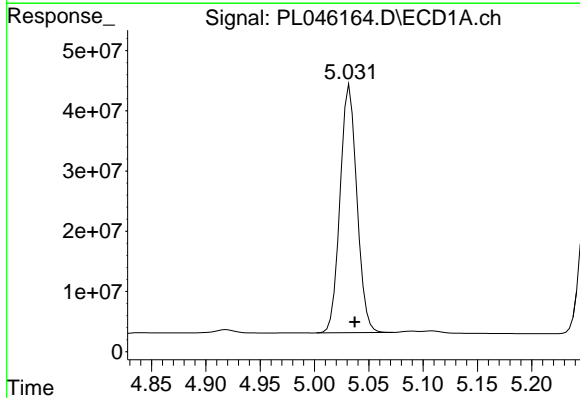
#7 delta-BHC
 R.T.: 4.516 min
 Delta R.T.: -0.004 min
 Response: 483419566
 Conc: 50.58 ng/ml

Instrument :
 ECD_L
 ClientSampled :
 PSTDCCC050

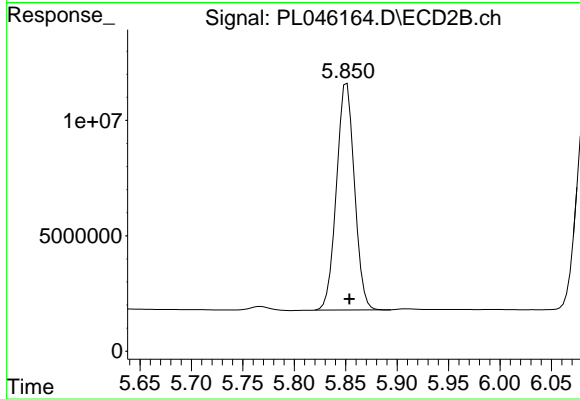
Manual Integrations
 APPROVED
 Sohil
 3/20/2019 10:08:42 AM



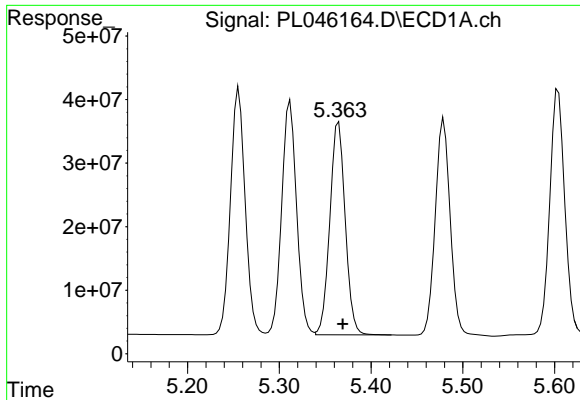
#7 delta-BHC
 R.T.: 5.042 min
 Delta R.T.: -0.002 min
 Response: 122956725
 Conc: 57.17 ng/ml



#8 Heptachlor epoxide
 R.T.: 5.032 min
 Delta R.T.: -0.005 min
 Response: 444318891
 Conc: 47.61 ng/ml



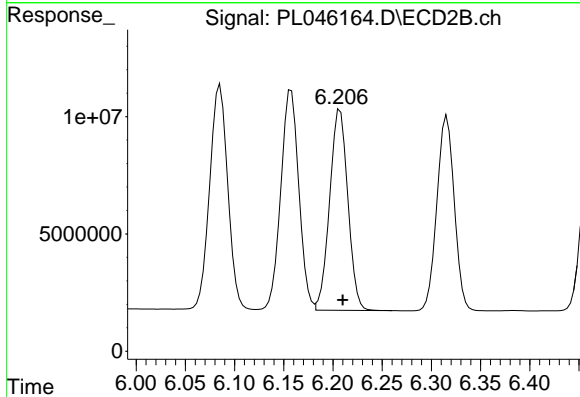
#8 Heptachlor epoxide
 R.T.: 5.851 min
 Delta R.T.: -0.002 min
 Response: 119494290
 Conc: 49.75 ng/ml



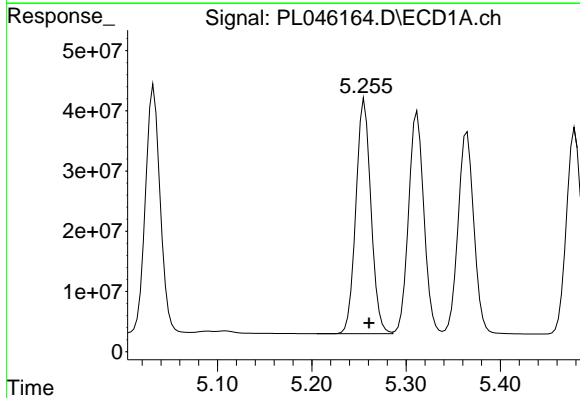
#9 Endosulfan I
 R.T.: 5.365 min
 Delta R.T.: -0.004 min
 Response: 390725650
 Conc: 43.71 ng/ml

Instrument :
 ECD_L
ClientSampled :
 PSTDCCC050

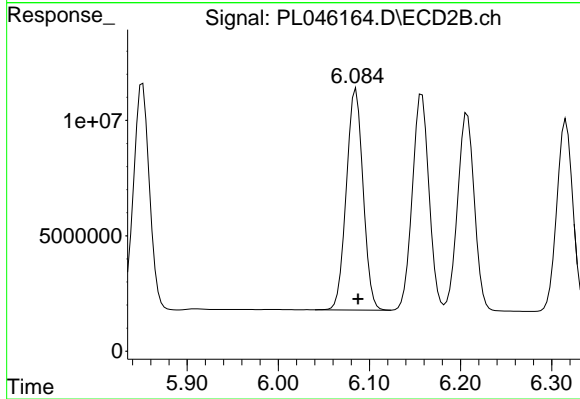
Manual Integrations
APPROVED
 Sohil
 3/20/2019 10:08:42 AM



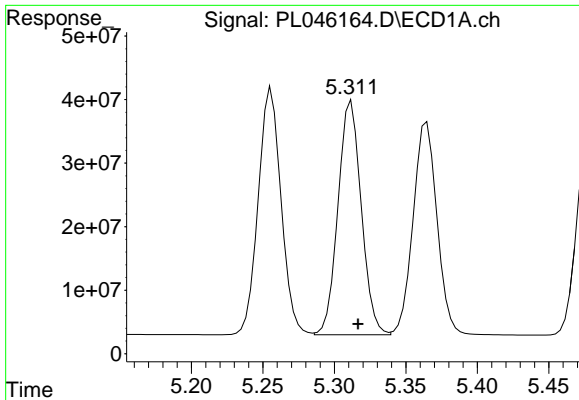
#9 Endosulfan I
 R.T.: 6.207 min
 Delta R.T.: -0.003 min
 Response: 110225338
 Conc: 44.26 ng/ml



#10 gamma-Chlordane
 R.T.: 5.256 min
 Delta R.T.: -0.005 min
 Response: 432321066
 Conc: 44.17 ng/ml



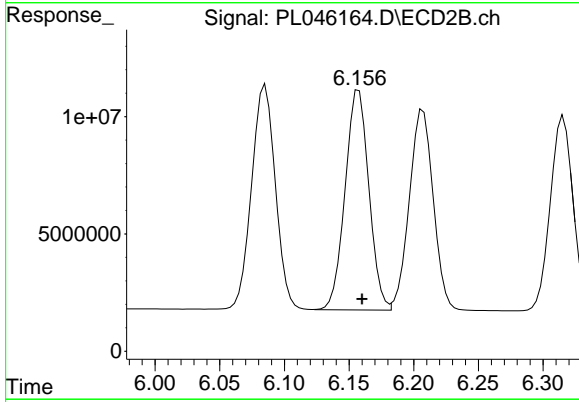
#10 gamma-Chlordane
 R.T.: 6.085 min
 Delta R.T.: -0.002 min
 Response: 122409379
 Conc: 45.63 ng/ml



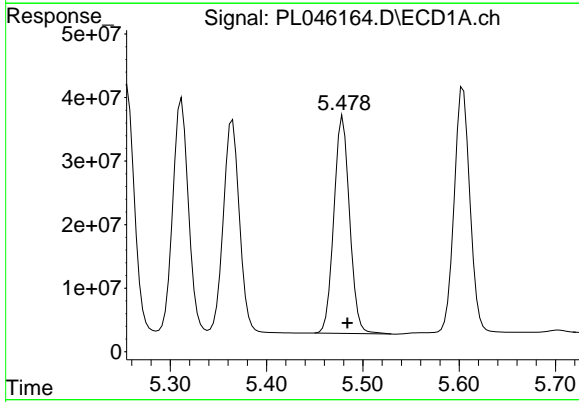
#11 alpha-Chlordane
 R.T.: 5.312 min
 Delta R.T.: -0.005 min
 Response: 417759172
 Conc: 43.08 ng/ml

Instrument :
 ECD_L
ClientSampled :
 PSTDCCC050

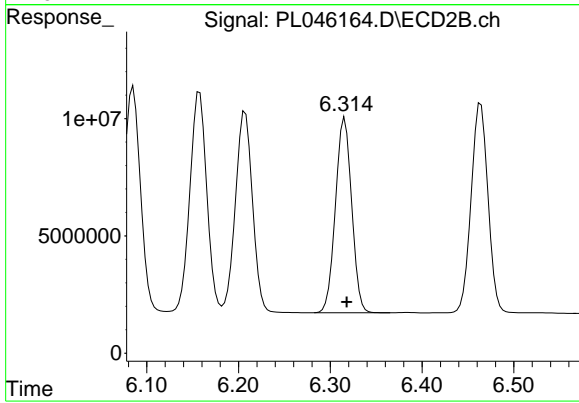
Manual Integrations
APPROVED
 Sohil
 3/20/2019 10:08:42 AM



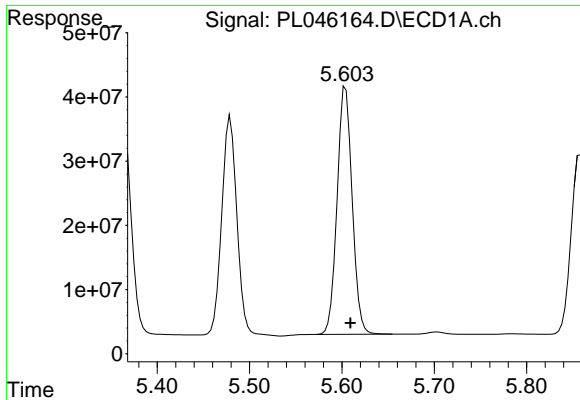
#11 alpha-Chlordane
 R.T.: 6.158 min
 Delta R.T.: -0.002 min
 Response: 119734241
 Conc: 44.38 ng/ml



#12 4,4'-DDE
 R.T.: 5.479 min
 Delta R.T.: -0.005 min
 Response: 387754546
 Conc: 44.17 ng/ml



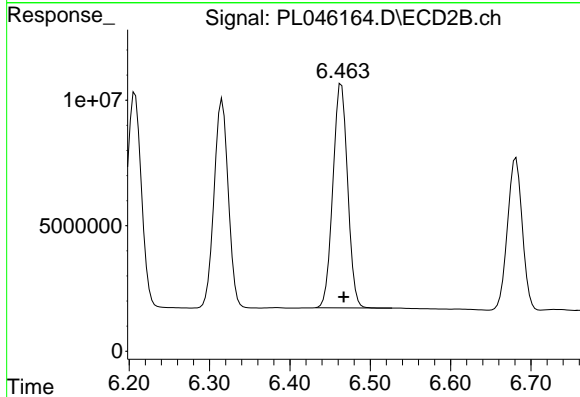
#12 4,4'-DDE
 R.T.: 6.316 min
 Delta R.T.: -0.002 min
 Response: 102252956
 Conc: 43.77 ng/ml



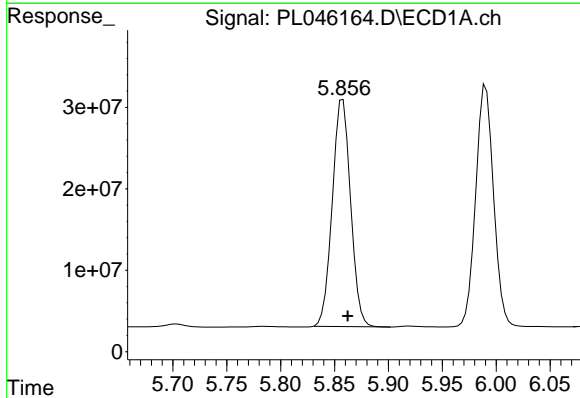
#13 Dieldrin
 R.T.: 5.604 min
 Delta R.T.: -0.005 min
 Response: 438013317
 Conc: 45.83 ng/ml

Instrument :
 ECD_L
 ClientSampled :
 PSTDCCC050

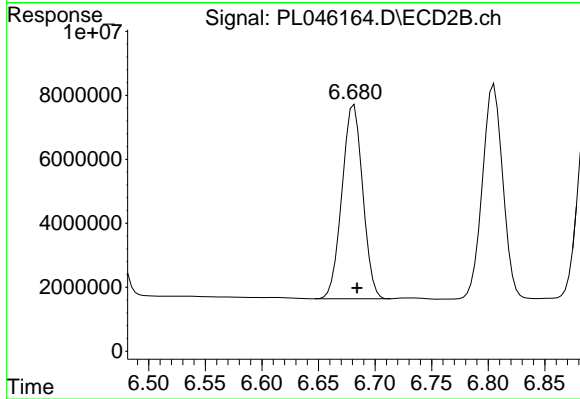
Manual Integrations
 APPROVED
 Sohil
 3/20/2019 10:08:42 AM



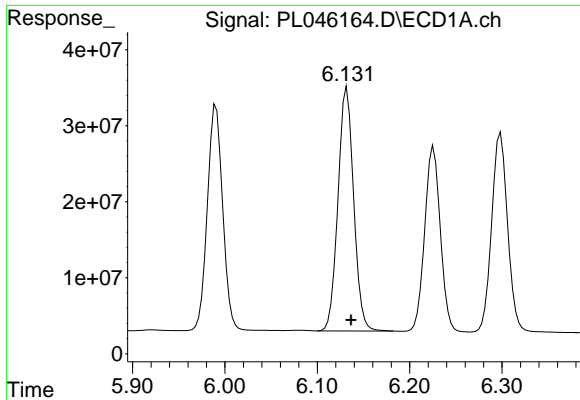
#13 Dieldrin
 R.T.: 6.464 min
 Delta R.T.: -0.003 min
 Response: 113749317
 Conc: 44.27 ng/ml



#14 Endrin
 R.T.: 5.858 min
 Delta R.T.: -0.005 min
 Response: 329140103
 Conc: 36.55 ng/ml



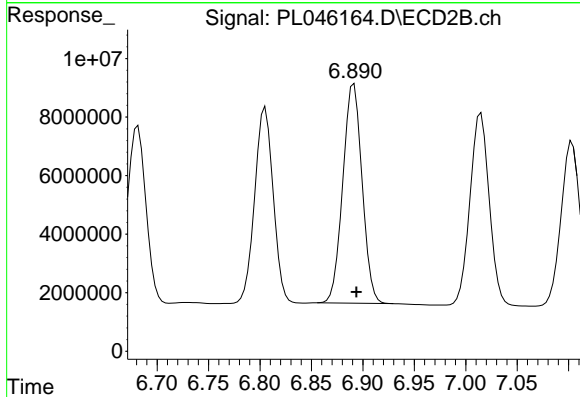
#14 Endrin
 R.T.: 6.681 min
 Delta R.T.: -0.003 min
 Response: 77461383
 Conc: 34.04 ng/ml



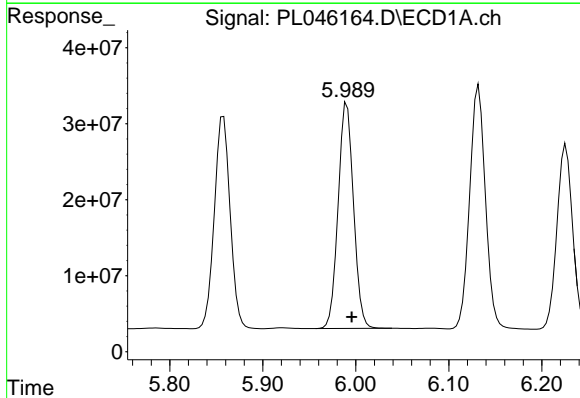
#15 Endosulfan II
 R.T.: 6.132 min
 Delta R.T.: -0.005 min
 Response: 37754412
 Conc: 43.58 ng/ml

Instrument :
 ECD_L
 ClientSampled :
 PSTDCCC050

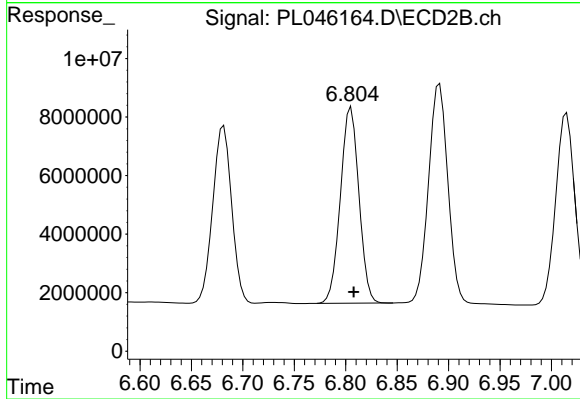
Manual Integrations
 APPROVED
 Sohil
 3/20/2019 10:08:42 AM



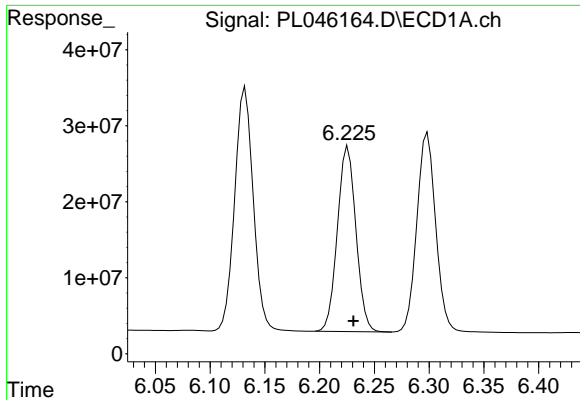
#15 Endosulfan II
 R.T.: 6.891 min
 Delta R.T.: -0.002 min
 Response: 97792675
 Conc: 41.59 ng/ml



#16 4,4'-DDD
 R.T.: 5.990 min
 Delta R.T.: -0.005 min
 Response: 341725107
 Conc: 46.67 ng/ml



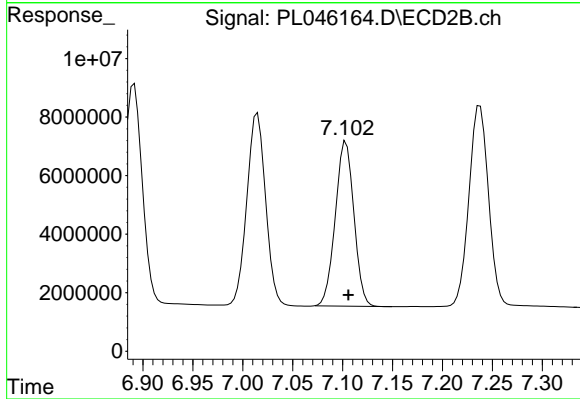
#16 4,4'-DDD
 R.T.: 6.805 min
 Delta R.T.: -0.003 min
 Response: 83886226
 Conc: 43.62 ng/ml



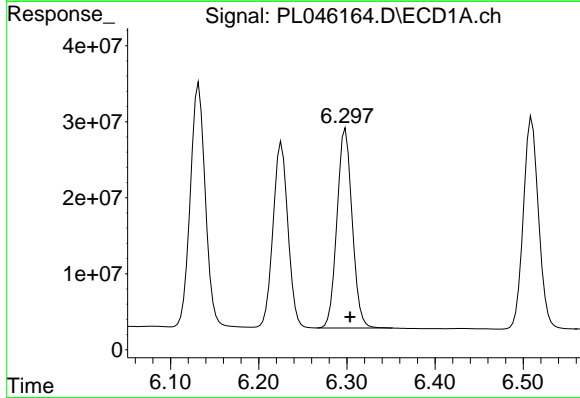
#17 4,4'-DDT
 R.T.: 6.226 min
 Delta R.T.: -0.005 min
 Response: 286481450
 Conc: 38.20 ng/ml

Instrument :
 ECD_L
ClientSampled :
 PSTDCCC050

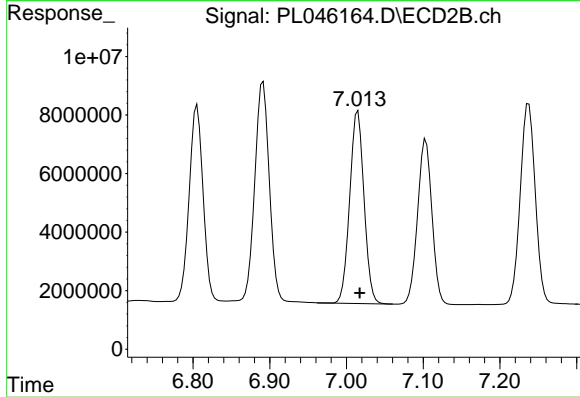
Manual Integrations
APPROVED
 Sohil
 3/20/2019 10:08:42 AM



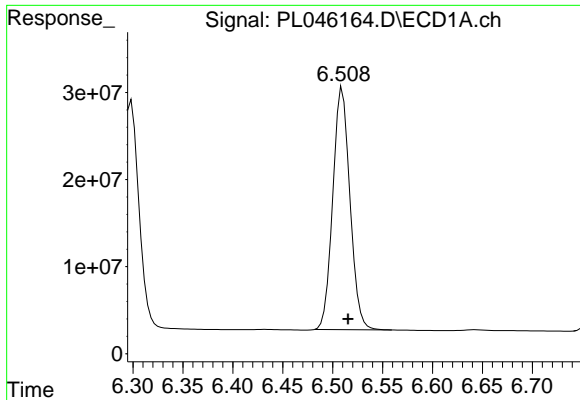
#17 4,4'-DDT
 R.T.: 7.103 min
 Delta R.T.: -0.002 min
 Response: 73024137
 Conc: 37.00 ng/ml



#18 Endrin aldehyde
 R.T.: 6.299 min
 Delta R.T.: -0.005 min
 Response: 313987119
 Conc: 42.96 ng/ml



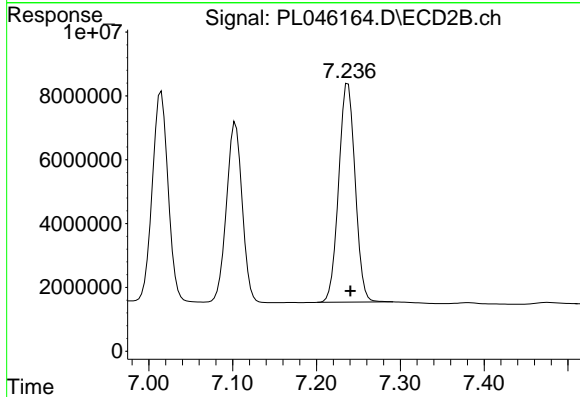
#18 Endrin aldehyde
 R.T.: 7.015 min
 Delta R.T.: -0.003 min
 Response: 85885643
 Conc: 42.01 ng/ml



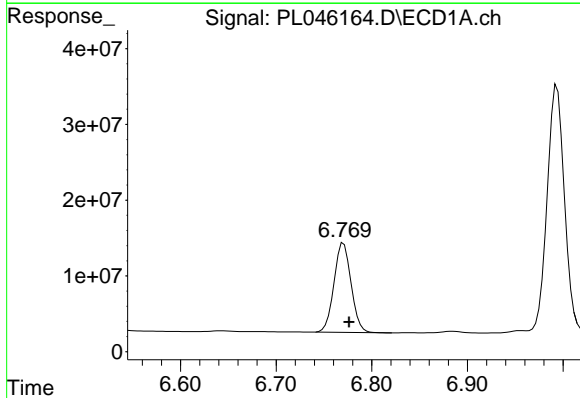
#19 Endosulfan Sulfate
 R.T.: 6.510 min
 Delta R.T.: -0.006 min
 Response: 332698658
 Conc: 40.93 ng/ml

Instrument :
 ECD_L
 ClientSampled :
 PSTDCCC050

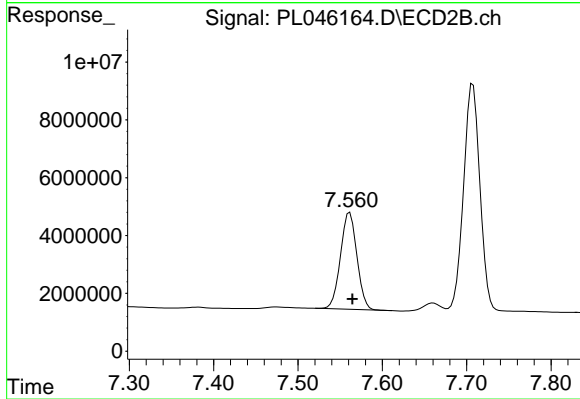
Manual Integrations
 APPROVED
 Sohil
 3/20/2019 10:08:42 AM



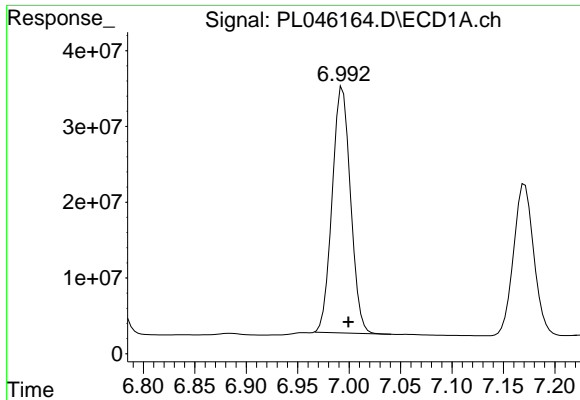
#19 Endosulfan Sulfate
 R.T.: 7.238 min
 Delta R.T.: -0.003 min
 Response: 93550959
 Conc: 41.59 ng/ml



#20 Methoxychlor
 R.T.: 6.770 min
 Delta R.T.: -0.006 min
 Response: 146299887
 Conc: 33.31 ng/ml



#20 Methoxychlor
 R.T.: 7.561 min
 Delta R.T.: -0.003 min
 Response: 45365587
 Conc: 36.96 ng/ml

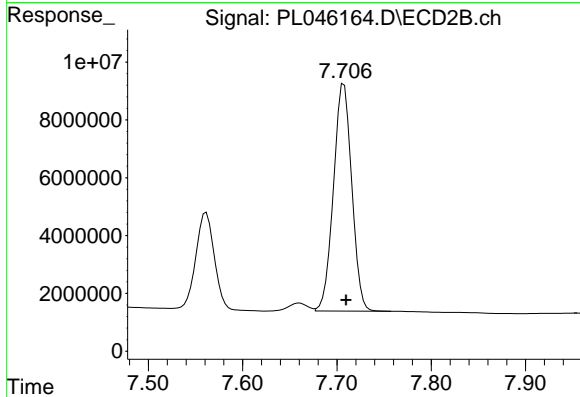


#21 Endrin ketone

R.T.: 6.994 min
 Delta R.T.: -0.006 min
 Response: 403528955
 Conc: 43.80 ng/ml

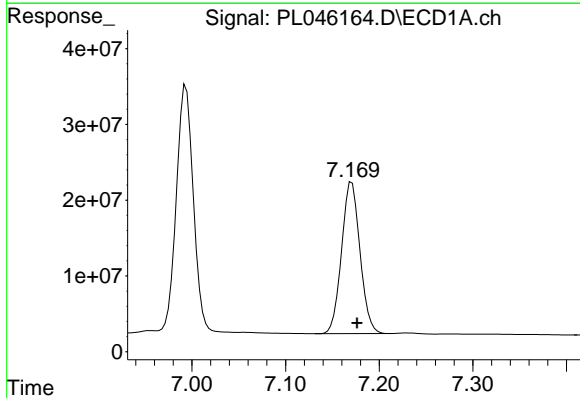
Instrument :
 ECD_L
 ClientSampled :
 PSTDCCC050

Manual Integrations
 APPROVED
 Sohil
 3/20/2019 10:08:42 AM



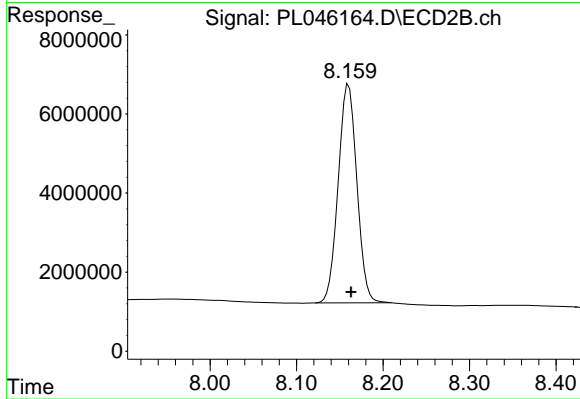
#21 Endrin ketone

R.T.: 7.707 min
 Delta R.T.: -0.002 min
 Response: 106187023
 Conc: 44.65 ng/ml



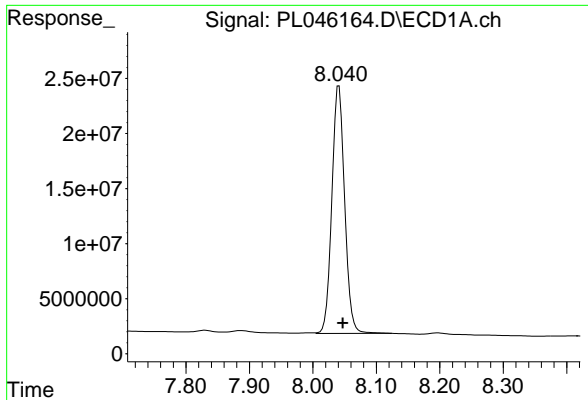
#22 Mirex

R.T.: 7.171 min
 Delta R.T.: -0.006 min
 Response: 273859833
 Conc: 36.81 ng/ml



#22 Mirex

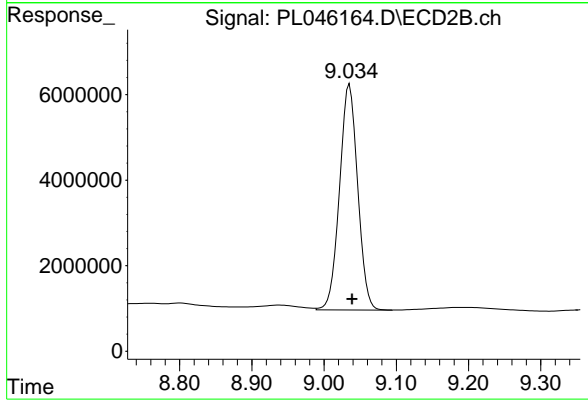
R.T.: 8.160 min
 Delta R.T.: -0.003 min
 Response: 82557903
 Conc: 41.45 ng/ml



#28 Decachlorobiphenyl
R.T.: 8.040 min
Delta R.T.: -0.008 min
Response: 314708200
Conc: 37.61 ng/ml m

Instrument :
ECD_L
ClientSampleId :
PSTDCCC050

Manual Integrations
APPROVED
Sohil
3/20/2019 10:08:42 AM



#28 Decachlorobiphenyl
R.T.: 9.034 min
Delta R.T.: -0.005 min
Response: 91853655
Conc: 40.20 ng/ml m