

Data Path : Z:\pestpcbsrv\HPCHEM1\ECD\_L\Data\PL031919\  
 Data File : PL046169.D  
 Signal(s) : Signal #1: ECD1A.ch Signal #2: ECD2B.ch  
 Acq On : 19 Mar 2019 20:38  
 Operator : AJ\SJ  
 Sample : K1693-10  
 Misc :  
 ALS Vial : 38 Sample Multiplier: 1

Instrument :  
 ECD\_L  
 ClientSampleId :  
 OR-03-031819-A

Integration File signal 1: autoint1.e  
 Integration File signal 2: autoint2.e  
 Quant Time: Mar 20 02:16:19 2019  
 Quant Method : Z:\pestpcbsrv\HPCHEM1\ECD\_L\methods\PL022719.M  
 Quant Title : GC Extractables  
 QLast Update : Wed Feb 27 17:00:03 2019  
 Response via : Initial Calibration  
 Integrator: ChemStation

Volume Inj. : 1 µl  
 Signal #1 Phase : ZB-MR2 Signal #2 Phase: ZB-MR1  
 Signal #1 Info : 30M x 0.32mm x0.2 Signal #2 Info : 30M x 0.32mm x0.5µm

Compound	RT#1	RT#2	Resp#1	Resp#2	ng/ml	ng/ml
-----						
System Monitoring Compounds						
1) SA Tetrachlo...	3.361	3.980	116.2E6	34998791	16.896	16.343
28) SA Decachlor...	8.040	9.035	99957747	29915466	11.946	13.093

Target Compounds

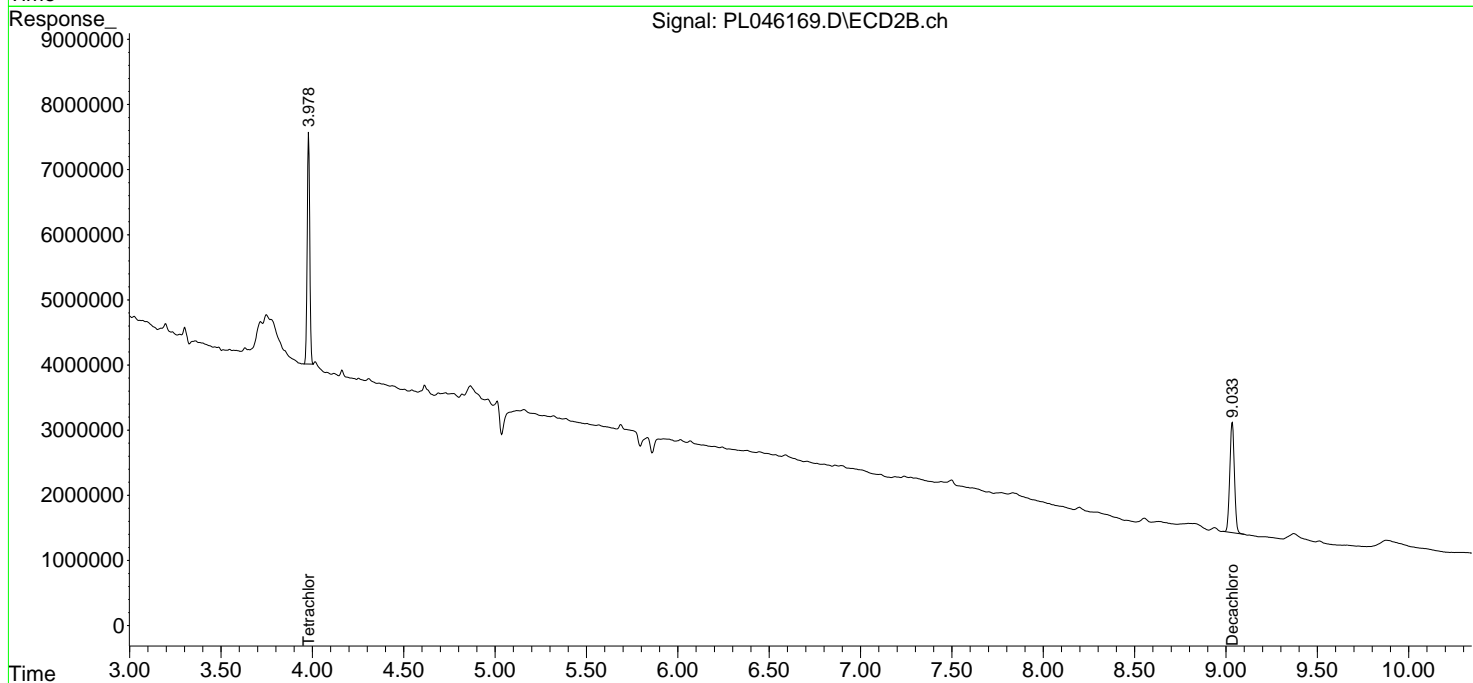
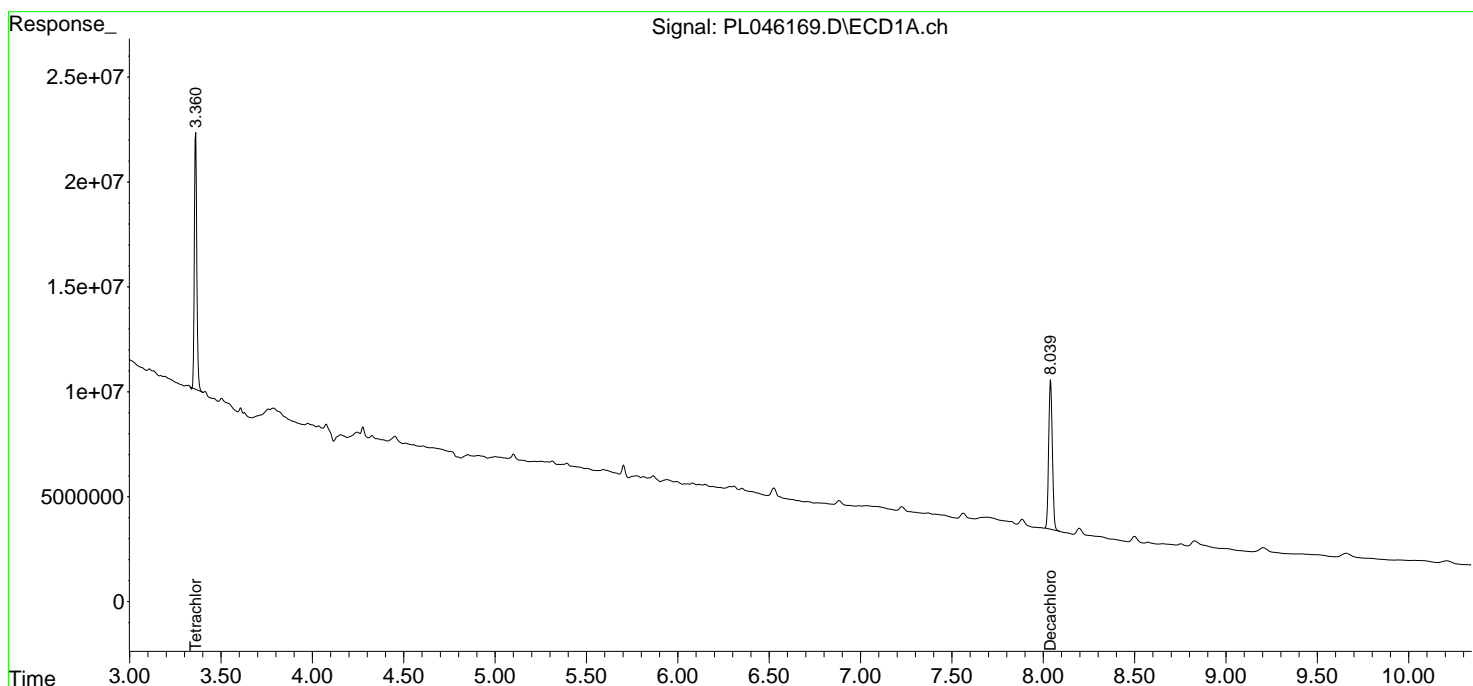
(f)=RT Delta > 1/2 Window (#)=Amounts differ by > 25% (m)=manual int.

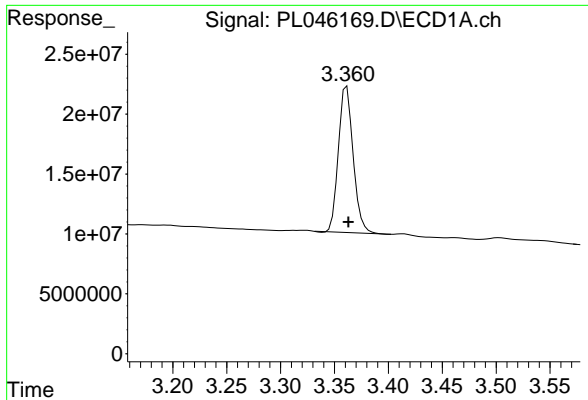
Data Path : Z:\pestpcbsrv\HPCHEM1\ECD\_L\Data\PL031919\  
 Data File : PL046169.D  
 Signal(s) : Signal #1: ECD1A.ch Signal #2: ECD2B.ch  
 Acq On : 19 Mar 2019 20:38  
 Operator : AJ\SJ  
 Sample : K1693-10  
 Misc :  
 ALS Vial : 38 Sample Multiplier: 1

Instrument :  
 ECD\_L  
 ClientSampleId :  
 OR-03-031819-A

Integration File signal 1: autoint1.e  
 Integration File signal 2: autoint2.e  
 Quant Time: Mar 20 02:16:19 2019  
 Quant Method : Z:\pestpcbsrv\HPCHEM1\ECD\_L\methods\PL022719.M  
 Quant Title : GC Extractables  
 QLast Update : Wed Feb 27 17:00:03 2019  
 Response via : Initial Calibration  
 Integrator: ChemStation

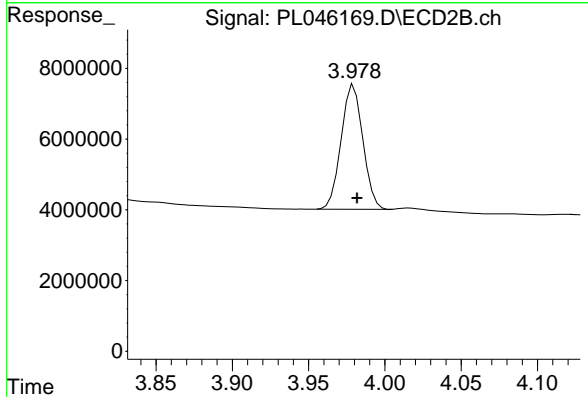
Volume Inj. : 1 µl  
 Signal #1 Phase : ZB-MR2 Signal #2 Phase: ZB-MR1  
 Signal #1 Info : 30M x 0.32mm x0.2 Signal #2 Info : 30M x 0.32mm x0.5µm



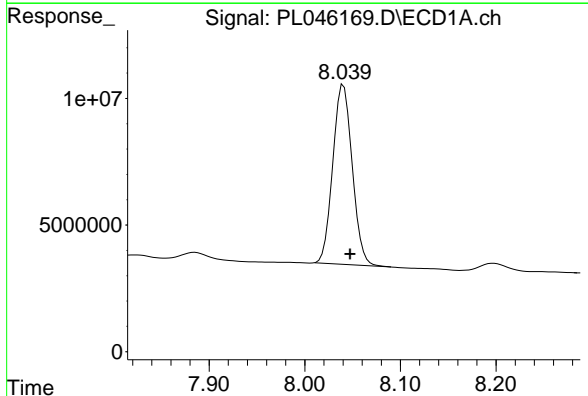


#1 Tetrachloro-m-xylene  
R.T.: 3.361 min  
Delta R.T.: -0.002 min  
Response: 116232185  
Conc: 16.90 ng/ml

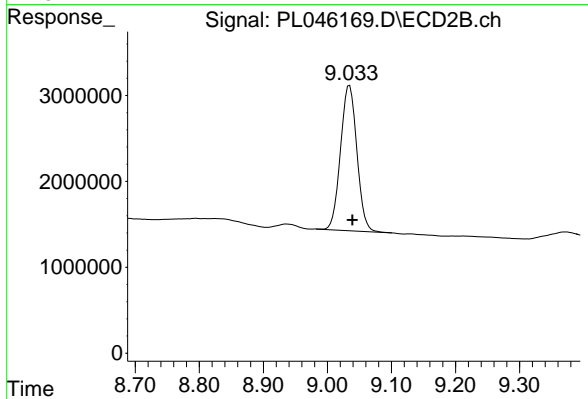
Instrument :  
ECD\_L  
ClientSampleId :  
OR-03-031819-A



#1 Tetrachloro-m-xylene  
R.T.: 3.980 min  
Delta R.T.: -0.002 min  
Response: 34998791  
Conc: 16.34 ng/ml



#28 Decachlorobiphenyl  
R.T.: 8.040 min  
Delta R.T.: -0.007 min  
Response: 99957747  
Conc: 11.95 ng/ml



#28 Decachlorobiphenyl  
R.T.: 9.035 min  
Delta R.T.: -0.004 min  
Response: 29915466  
Conc: 13.09 ng/ml