

Data Path : Z:\pestpcbsrv\HPCHEM1\ECD_L\Data\PL031919\
 Data File : PL046175.D
 Signal(s) : Signal #1: ECD1A.ch Signal #2: ECD2B.ch
 Acq On : 19 Mar 2019 22:03
 Operator : AJ\SJ
 Sample : K1956-04MS
 Misc :
 ALS Vial : 44 Sample Multiplier: 1

Instrument :
 ECD_L
 ClientSampleId :
 TP-7MS

Integration File signal 1: autoint1.e
 Integration File signal 2: autoint2.e
 Quant Time: Mar 20 02:17:19 2019
 Quant Method : Z:\pestpcbsrv\HPCHEM1\ECD_L\methods\PL022719.M
 Quant Title : GC Extractables
 QLast Update : Wed Feb 27 17:00:03 2019
 Response via : Initial Calibration
 Integrator: ChemStation

Volume Inj. : 1 µl
 Signal #1 Phase : ZB-MR2 Signal #2 Phase: ZB-MR1
 Signal #1 Info : 30M x 0.32mm x0.2 Signal #2 Info : 30M x 0.32mm x0.5µm

	Compound	RT#1	RT#2	Resp#1	Resp#2	ng/ml	ng/ml

System Monitoring Compounds							
1)	SA Tetrachlo...	3.361	3.980	127.1E6	40693711	18.478	19.002
28)	SA Decachlor...	8.040	9.035	119.5E6	34703863	14.282	15.188
Target Compounds							
2)	A alpha-BHC	3.791	4.369	579.8E6	161.0E6	52.196	52.981
3)	MA gamma-BHC...	4.068	4.654	534.0E6	146.5E6	52.829	51.871
4)	MA Heptachlor	4.355	5.161	534.2E6	149.9E6	50.623	50.402
5)	MB Aldrin	4.595	5.465	509.0E6	140.6E6	52.328	52.049
6)	B beta-BHC	4.320	4.826	216.4E6	65892947	50.495	51.886
7)	B delta-BHC	4.516	5.042	512.7E6	121.2E6	53.647	56.346
8)	B Heptachlo...	5.032	5.851	486.5E6	126.2E6	52.125	52.533
9)	A Endosulfan I	5.364	6.208	459.4E6	122.0E6	51.391	48.999
10)	B gamma-Chl...	5.255	6.085	500.4E6	133.7E6	51.124	49.851
11)	B alpha-Chl...	5.312	6.157	490.8E6	132.0E6	50.611	48.931
12)	B 4,4'-DDE	5.479	6.315	457.3E6	115.3E6	52.099	49.369
13)	MA Dieldrin	5.604	6.464	499.5E6	125.3E6	52.259	48.773
14)	MA Endrin	5.857	6.681	391.0E6	93186472	43.422	40.956
15)	B Endosulfa...	6.132	6.891	429.5E6	112.4E6	49.547	47.779
16)	A 4,4'-DDD	5.990	6.805	395.4E6	99118511	54.008	51.541
17)	MA 4,4'-DDT	6.225	7.103	323.4E6	84606870	43.113	42.873
18)	B Endrin al...	6.298	7.015	364.5E6	99422621	49.863	48.636
19)	B Endosulfa...	6.510	7.238	380.4E6	104.1E6	46.801	46.287
20)	A Methoxychlor	6.770	7.561	167.0E6	48567352	38.021	39.569
21)	B Endrin ke...	6.993	7.707	455.0E6	116.7E6	49.392	49.070
22)	Mirex	7.170	8.159	301.7E6	86361083	40.553	43.361

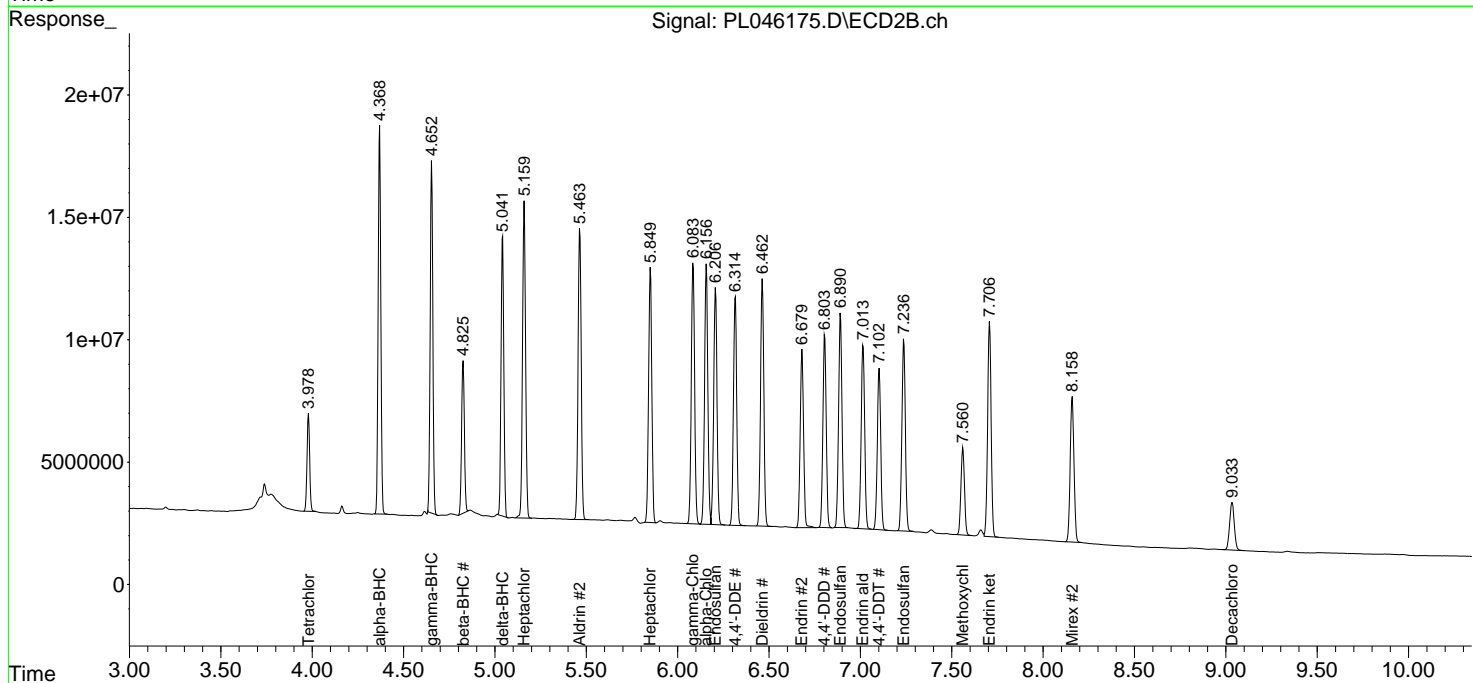
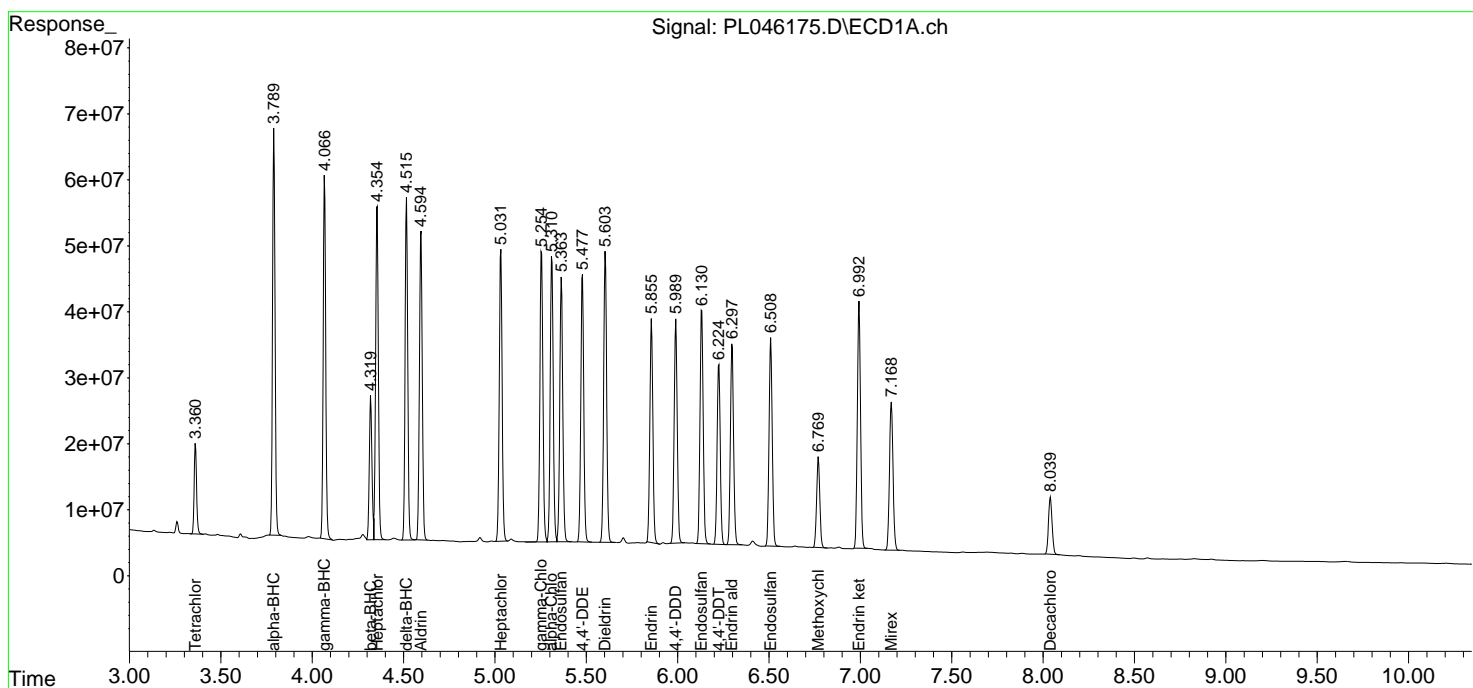
(f)=RT Delta > 1/2 Window (#)=Amounts differ by > 25% (m)=manual int.

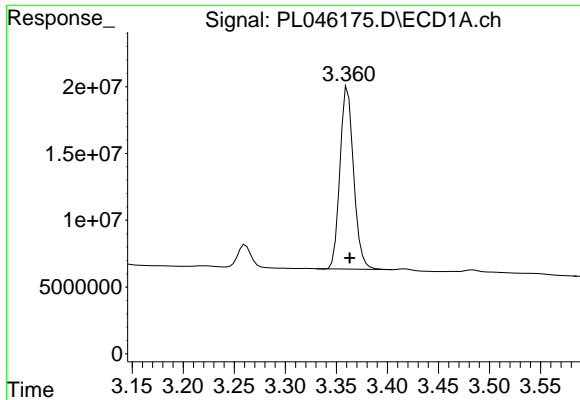
Data Path : Z:\pestpcbsrv\HPCHEM1\ECD_L\Data\PL031919\
 Data File : PL046175.D
 Signal(s) : Signal #1: ECD1A.ch Signal #2: ECD2B.ch
 Acq On : 19 Mar 2019 22:03
 Operator : AJ\SJ
 Sample : K1956-04MS
 Misc :
 ALS Vial : 44 Sample Multiplier: 1

Instrument :
 ECD_L
 ClientSampled :
 TP-7MS

Integration File signal 1: autoint1.e
 Integration File signal 2: autoint2.e
 Quant Time: Mar 20 02:17:19 2019
 Quant Method : Z:\pestpcbsrv\HPCHEM1\ECD_L\methods\PL022719.M
 Quant Title : GC Extractables
 QLast Update : Wed Feb 27 17:00:03 2019
 Response via : Initial Calibration
 Integrator: ChemStation

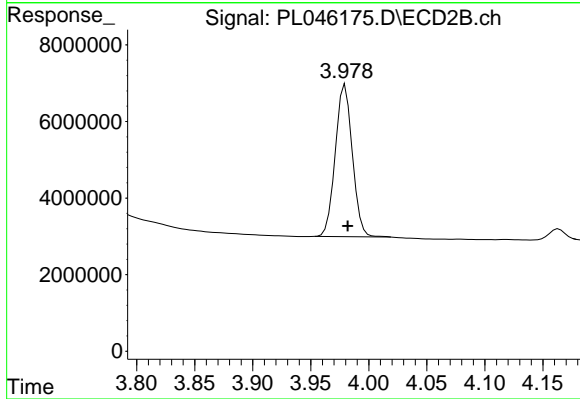
Volume Inj. : 1 µl
 Signal #1 Phase : ZB-MR2 Signal #2 Phase: ZB-MR1
 Signal #1 Info : 30M x 0.32mm x0.2 Signal #2 Info : 30M x 0.32mm x0.5µm



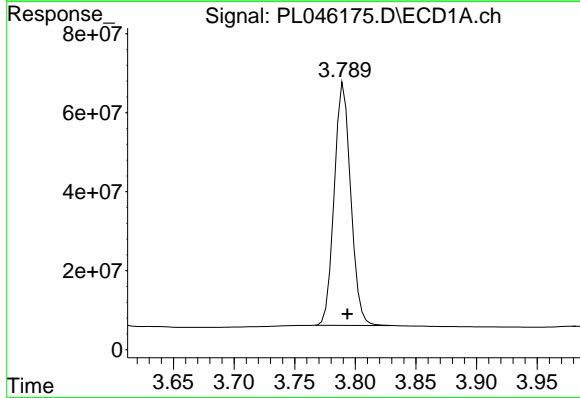


#1 Tetrachloro-m-xylene
 R.T.: 3.361 min
 Delta R.T.: -0.002 min
 Response: 127113983
 Conc: 18.48 ng/ml

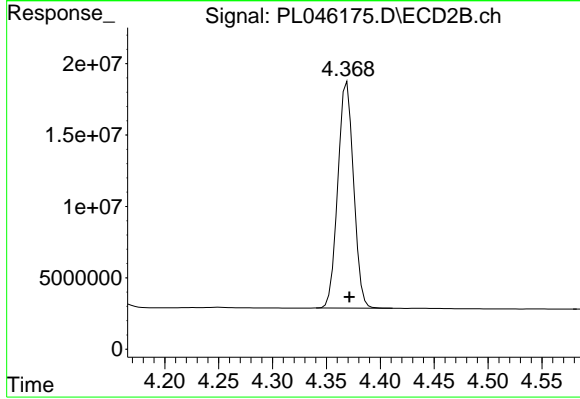
Instrument :
 ECD_L
 ClientSampled :
 TP-7MS



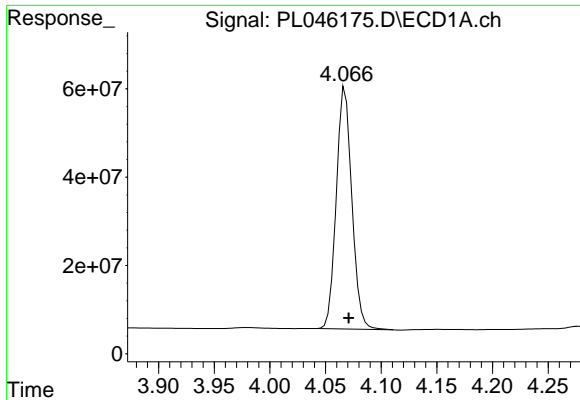
#1 Tetrachloro-m-xylene
 R.T.: 3.980 min
 Delta R.T.: -0.002 min
 Response: 40693711
 Conc: 19.00 ng/ml



#2 alpha-BHC
 R.T.: 3.791 min
 Delta R.T.: -0.003 min
 Response: 579762159
 Conc: 52.20 ng/ml

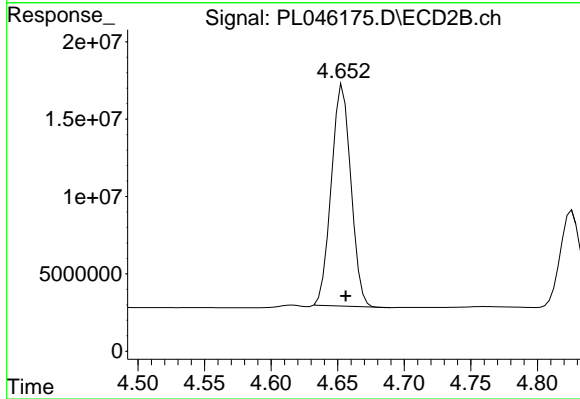


#2 alpha-BHC
 R.T.: 4.369 min
 Delta R.T.: -0.002 min
 Response: 160992236
 Conc: 52.98 ng/ml

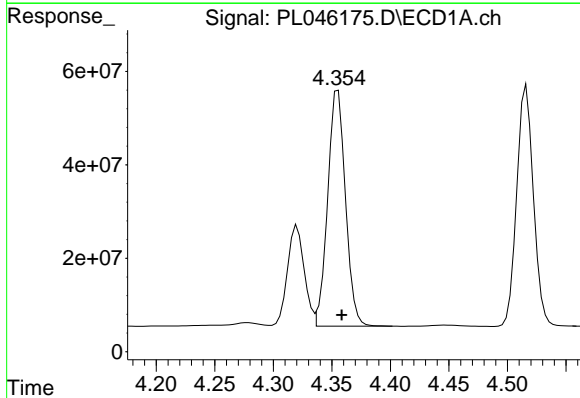


#3 gamma-BHC (Lindane)
 R.T.: 4.068 min
 Delta R.T.: -0.003 min
 Response: 533954461
 Conc: 52.83 ng/ml

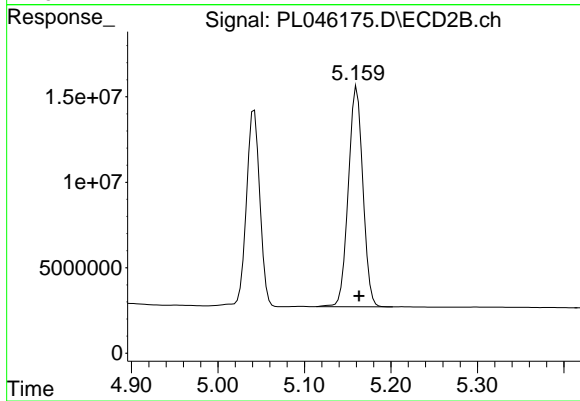
Instrument :
 ECD_L
 ClientSampled :
 TP-7MS



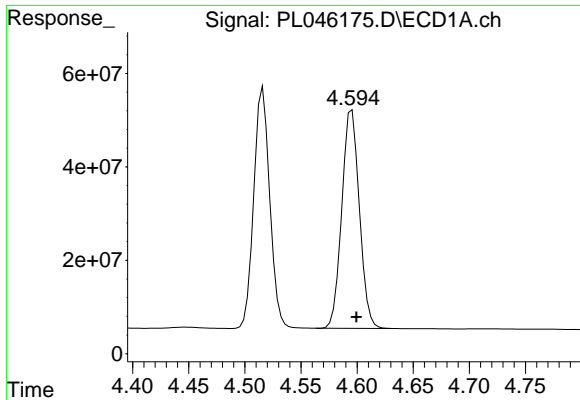
#3 gamma-BHC (Lindane)
 R.T.: 4.654 min
 Delta R.T.: -0.002 min
 Response: 146515498
 Conc: 51.87 ng/ml



#4 Heptachlor
 R.T.: 4.355 min
 Delta R.T.: -0.003 min
 Response: 534188341
 Conc: 50.62 ng/ml

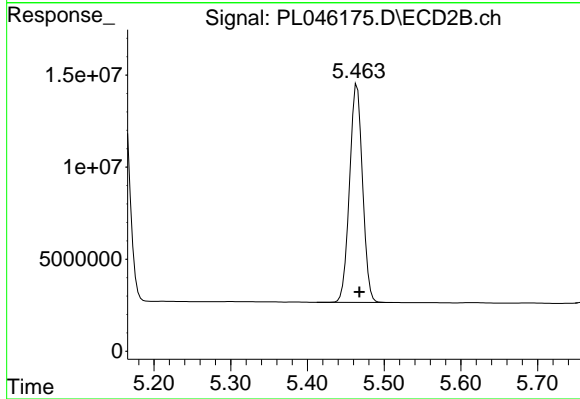


#4 Heptachlor
 R.T.: 5.161 min
 Delta R.T.: -0.003 min
 Response: 149942556
 Conc: 50.40 ng/ml

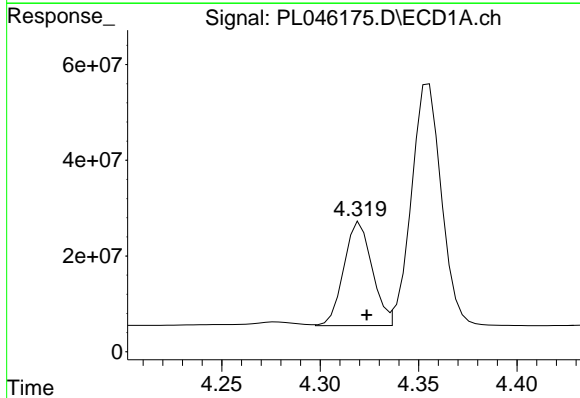


#5 Aldrin
 R.T.: 4.595 min
 Delta R.T.: -0.004 min
 Response: 508960997
 Conc: 52.33 ng/ml

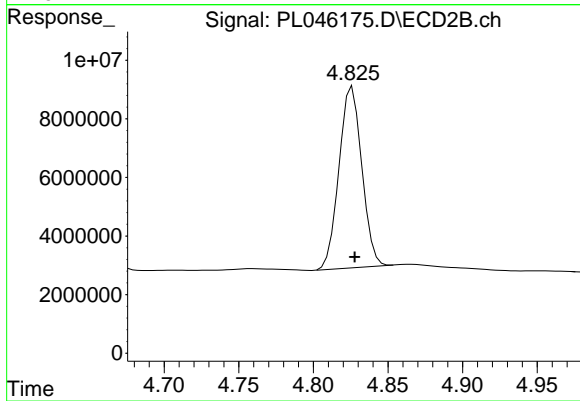
Instrument :
 ECD_L
 ClientSampleId :
 TP-7MS



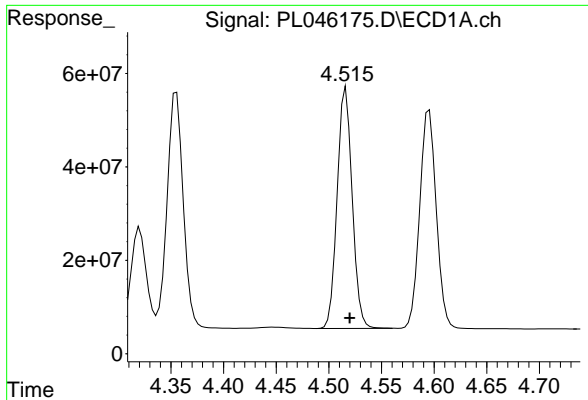
#5 Aldrin
 R.T.: 5.465 min
 Delta R.T.: -0.003 min
 Response: 140581886
 Conc: 52.05 ng/ml



#6 beta-BHC
 R.T.: 4.320 min
 Delta R.T.: -0.003 min
 Response: 216426321
 Conc: 50.50 ng/ml

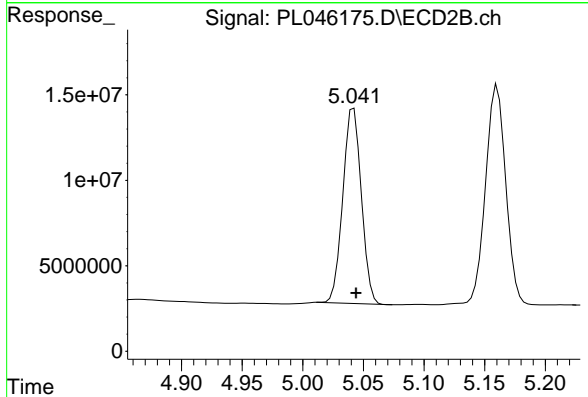


#6 beta-BHC
 R.T.: 4.826 min
 Delta R.T.: -0.002 min
 Response: 65892947
 Conc: 51.89 ng/ml

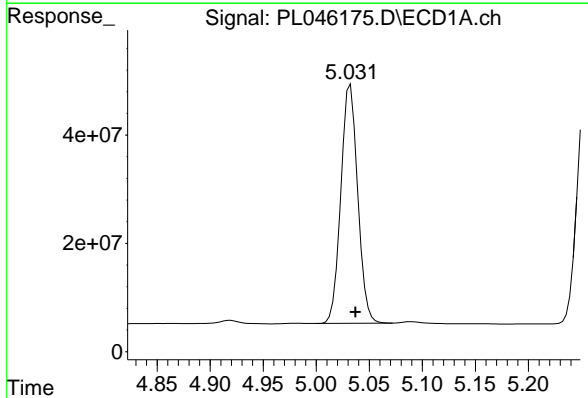


#7 delta-BHC
 R.T.: 4.516 min
 Delta R.T.: -0.004 min
 Response: 512749464
 Conc: 53.65 ng/ml

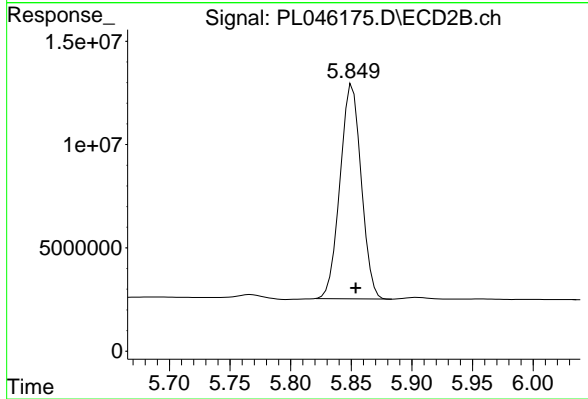
Instrument :
 ECD_L
 ClientSampled :
 TP-7MS



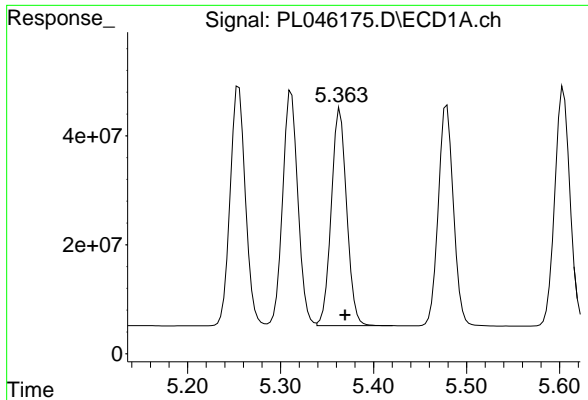
#7 delta-BHC
 R.T.: 5.042 min
 Delta R.T.: -0.002 min
 Response: 121194272
 Conc: 56.35 ng/ml



#8 Heptachlor epoxide
 R.T.: 5.032 min
 Delta R.T.: -0.005 min
 Response: 486489156
 Conc: 52.13 ng/ml

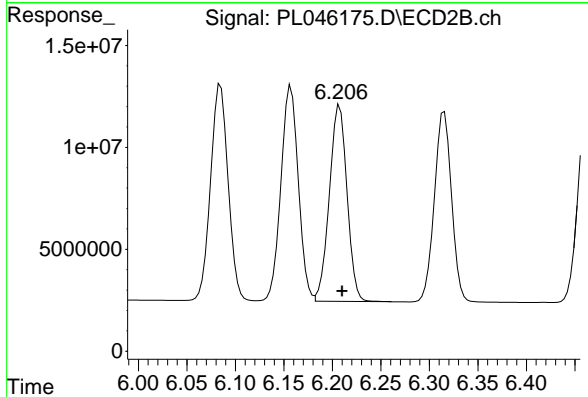


#8 Heptachlor epoxide
 R.T.: 5.851 min
 Delta R.T.: -0.003 min
 Response: 126180468
 Conc: 52.53 ng/ml

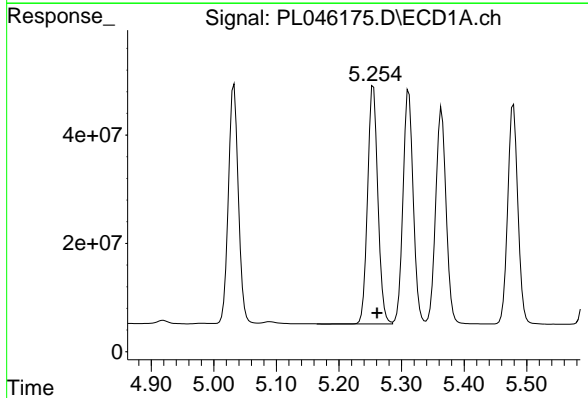


#9 Endosulfan I
 R.T.: 5.364 min
 Delta R.T.: -0.005 min
 Response: 459355066
 Conc: 51.39 ng/ml

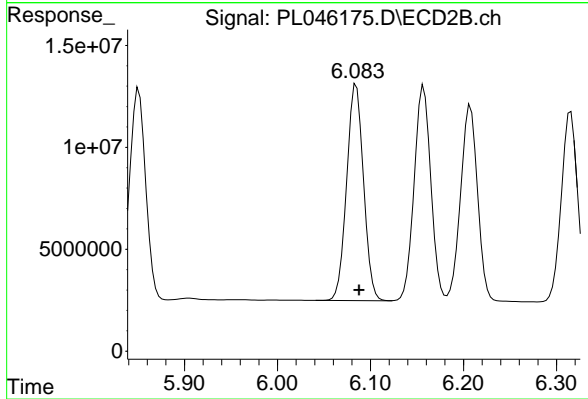
Instrument :
 ECD_L
 ClientSampled :
 TP-7MS



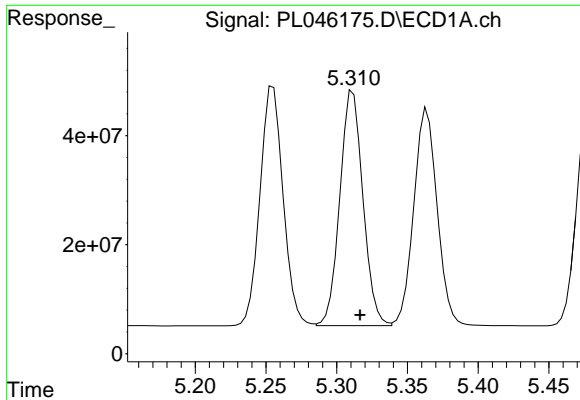
#9 Endosulfan I
 R.T.: 6.208 min
 Delta R.T.: -0.002 min
 Response: 122020501
 Conc: 49.00 ng/ml



#10 gamma-Chlordane
 R.T.: 5.255 min
 Delta R.T.: -0.005 min
 Response: 500352191
 Conc: 51.12 ng/ml

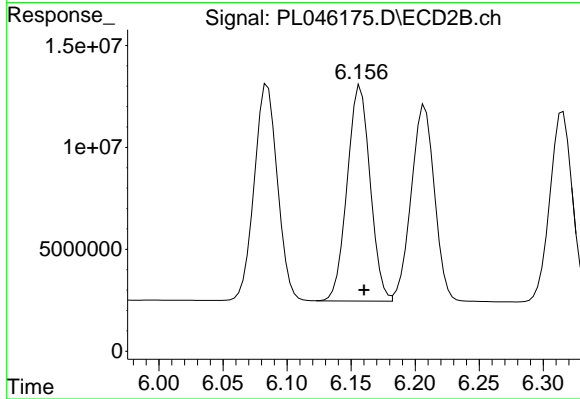


#10 gamma-Chlordane
 R.T.: 6.085 min
 Delta R.T.: -0.003 min
 Response: 133748074
 Conc: 49.85 ng/ml

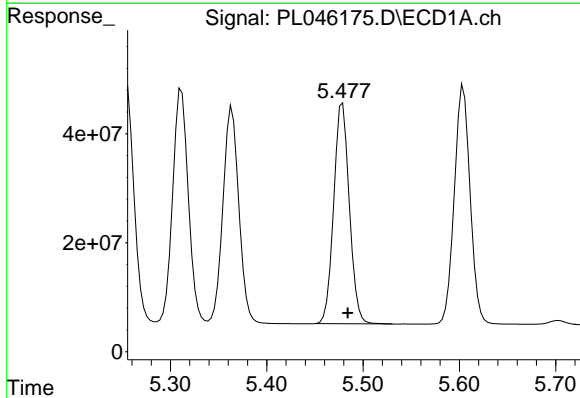


#11 alpha-Chlordane
 R.T.: 5.312 min
 Delta R.T.: -0.005 min
 Response: 490772272
 Conc: 50.61 ng/ml

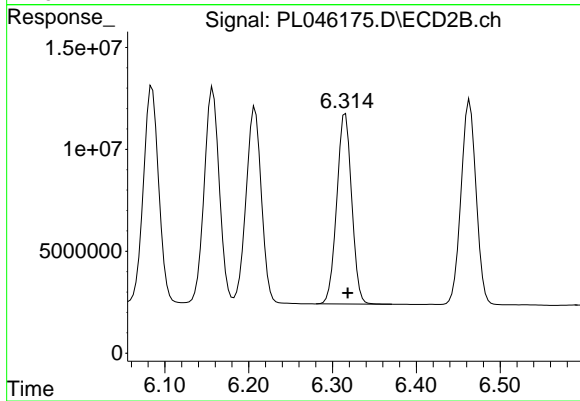
Instrument :
 ECD_L
 ClientSampled :
 TP-7MS



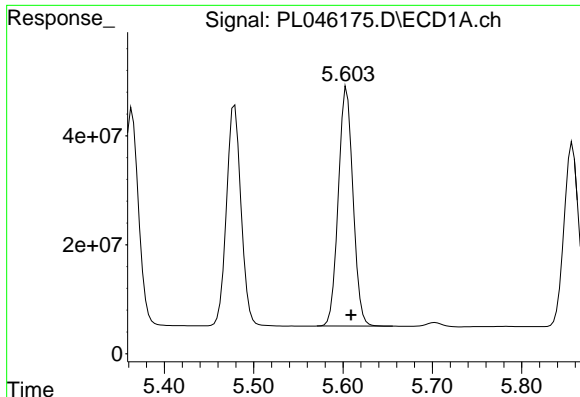
#11 alpha-Chlordane
 R.T.: 6.157 min
 Delta R.T.: -0.003 min
 Response: 132000895
 Conc: 48.93 ng/ml



#12 4,4'-DDE
 R.T.: 5.479 min
 Delta R.T.: -0.005 min
 Response: 457336026
 Conc: 52.10 ng/ml



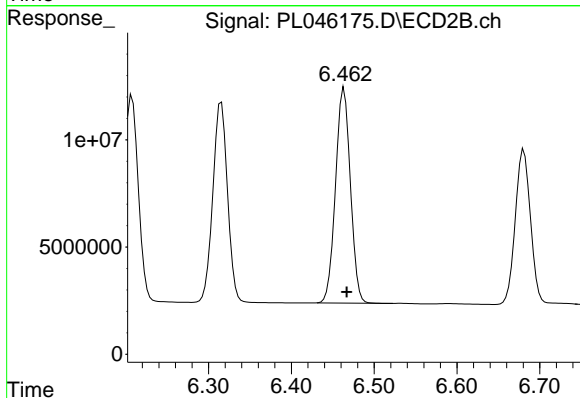
#12 4,4'-DDE
 R.T.: 6.315 min
 Delta R.T.: -0.003 min
 Response: 115320638
 Conc: 49.37 ng/ml



#13 Dieldrin

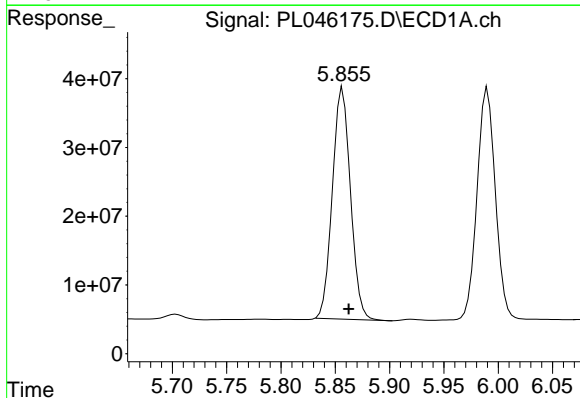
R.T.: 5.604 min
 Delta R.T.: -0.005 min
 Response: 499489610
 Conc: 52.26 ng/ml

Instrument :
 ECD_L
 ClientSampled :
 TP-7MS



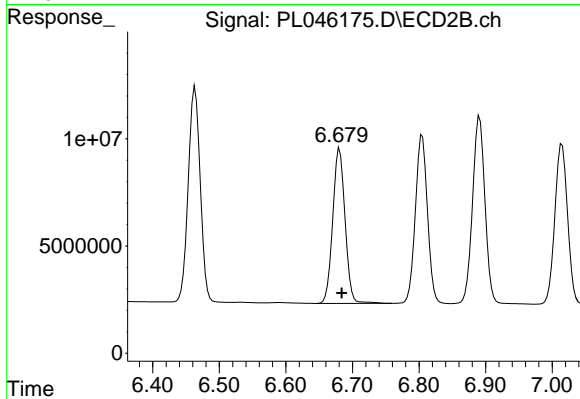
#13 Dieldrin

R.T.: 6.464 min
 Delta R.T.: -0.003 min
 Response: 125333702
 Conc: 48.77 ng/ml



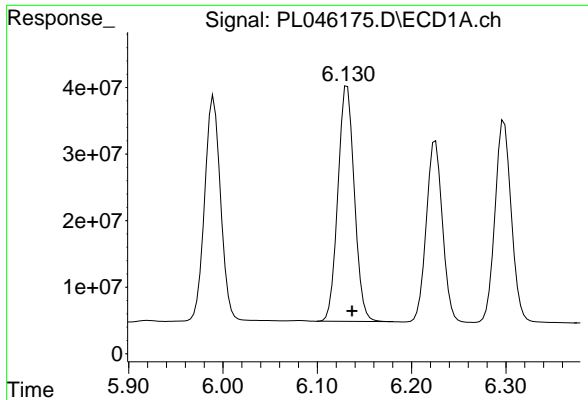
#14 Endrin

R.T.: 5.857 min
 Delta R.T.: -0.005 min
 Response: 391048899
 Conc: 43.42 ng/ml



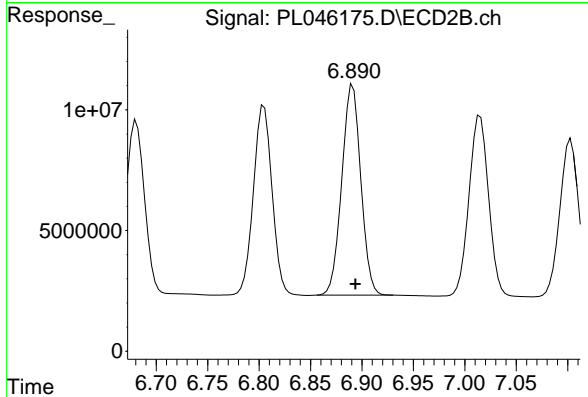
#14 Endrin

R.T.: 6.681 min
 Delta R.T.: -0.003 min
 Response: 93186472
 Conc: 40.96 ng/ml

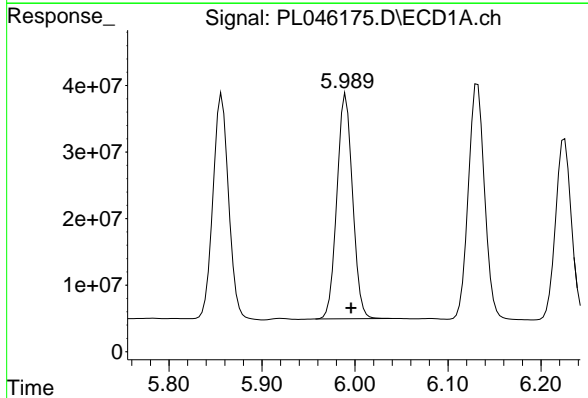


#15 Endosulfan II
 R.T.: 6.132 min
 Delta R.T.: -0.005 min
 Response: 429506391
 Conc: 49.55 ng/ml

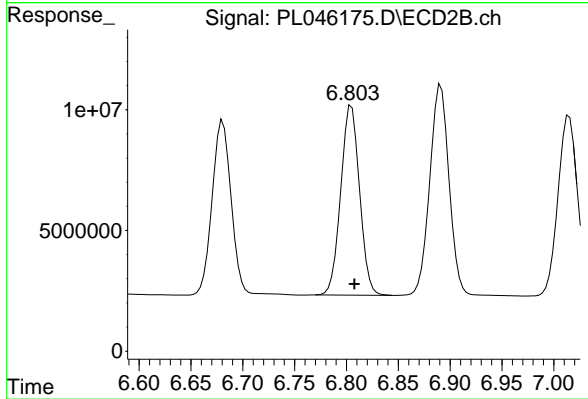
Instrument :
 ECD_L
 ClientSampled :
 TP-7MS



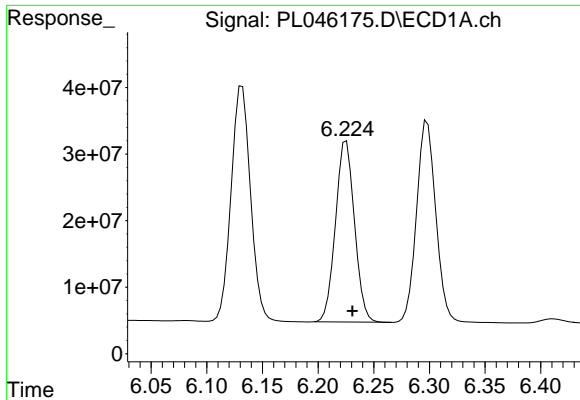
#15 Endosulfan II
 R.T.: 6.891 min
 Delta R.T.: -0.003 min
 Response: 112358803
 Conc: 47.78 ng/ml



#16 4,4'-DDD
 R.T.: 5.990 min
 Delta R.T.: -0.005 min
 Response: 395437218
 Conc: 54.01 ng/ml



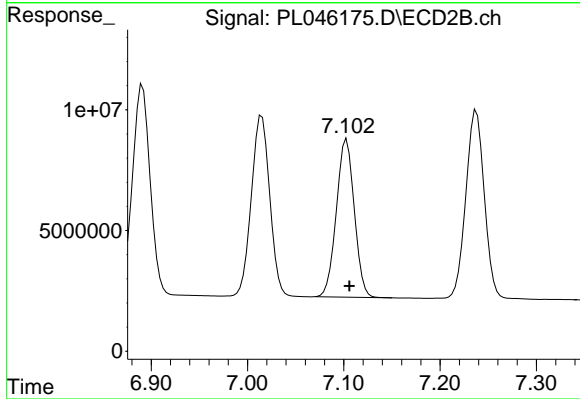
#16 4,4'-DDD
 R.T.: 6.805 min
 Delta R.T.: -0.003 min
 Response: 99118511
 Conc: 51.54 ng/ml



#17 4,4'-DDT

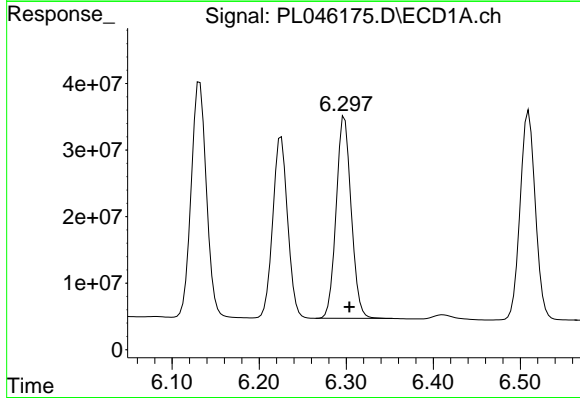
R.T.: 6.225 min
 Delta R.T.: -0.005 min
 Response: 323355676
 Conc: 43.11 ng/ml

Instrument :
 ECD_L
 ClientSampled :
 TP-7MS



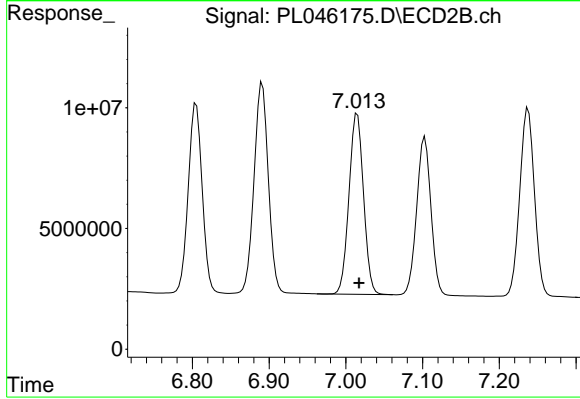
#17 4,4'-DDT

R.T.: 7.103 min
 Delta R.T.: -0.003 min
 Response: 84606870
 Conc: 42.87 ng/ml



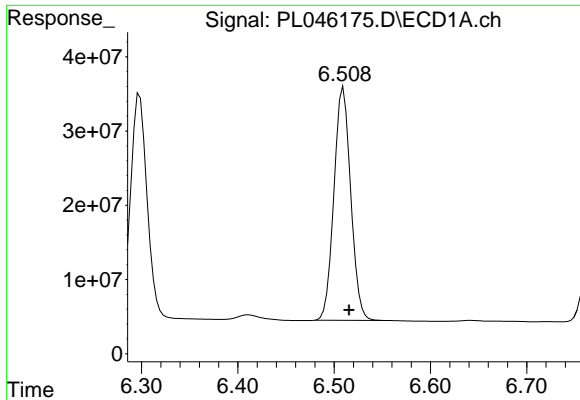
#18 Endrin aldehyde

R.T.: 6.298 min
 Delta R.T.: -0.006 min
 Response: 364480398
 Conc: 49.86 ng/ml



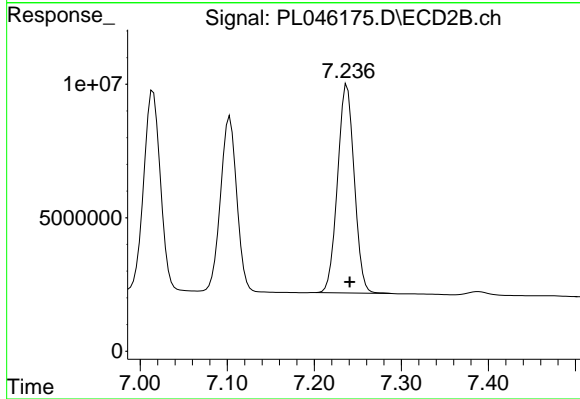
#18 Endrin aldehyde

R.T.: 7.015 min
 Delta R.T.: -0.003 min
 Response: 99422621
 Conc: 48.64 ng/ml

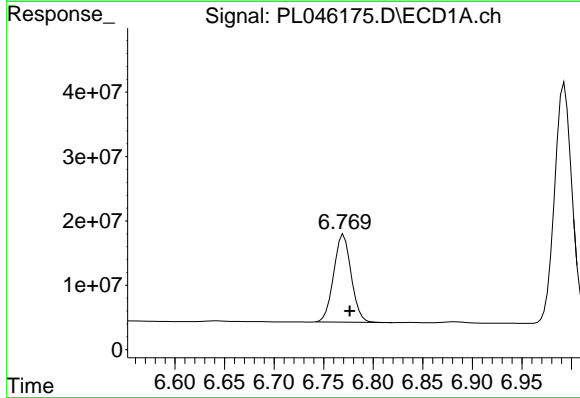


#19 Endosulfan Sulfate
 R.T.: 6.510 min
 Delta R.T.: -0.006 min
 Response: 380408148
 Conc: 46.80 ng/ml

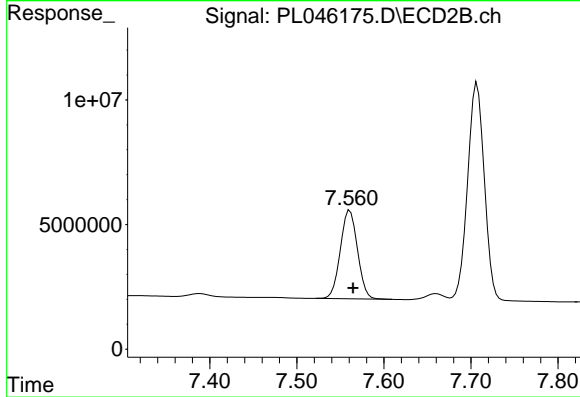
Instrument :
 ECD_L
 ClientSampled :
 TP-7MS



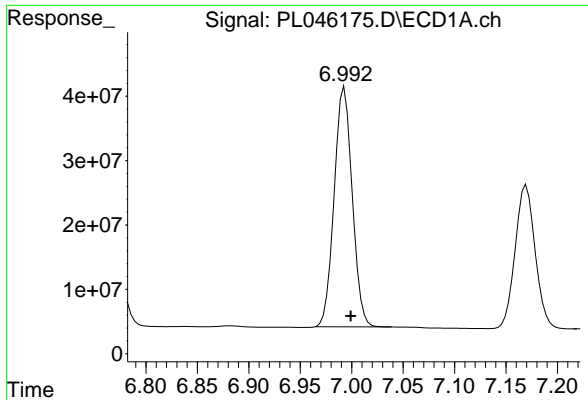
#19 Endosulfan Sulfate
 R.T.: 7.238 min
 Delta R.T.: -0.003 min
 Response: 104122917
 Conc: 46.29 ng/ml



#20 Methoxychlor
 R.T.: 6.770 min
 Delta R.T.: -0.006 min
 Response: 166978713
 Conc: 38.02 ng/ml

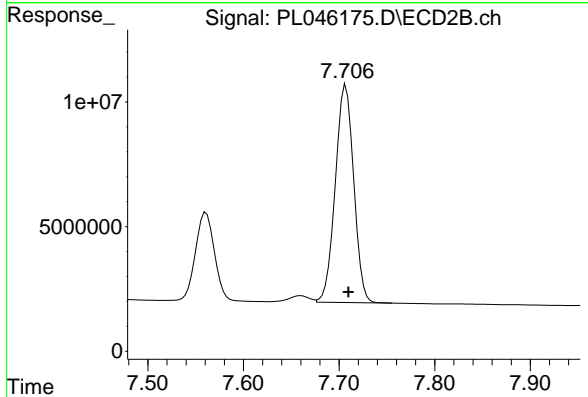


#20 Methoxychlor
 R.T.: 7.561 min
 Delta R.T.: -0.003 min
 Response: 48567352
 Conc: 39.57 ng/ml

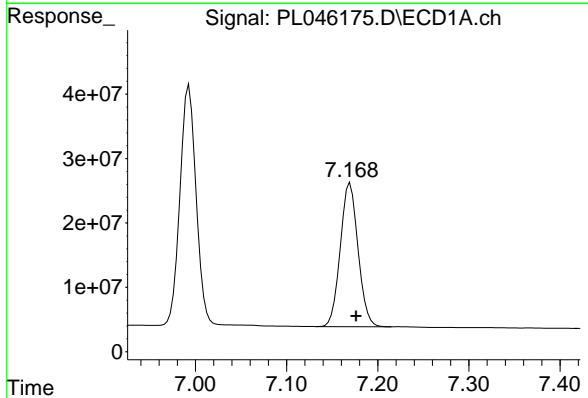


#21 Endrin ketone
 R.T.: 6.993 min
 Delta R.T.: -0.006 min
 Response: 455042218
 Conc: 49.39 ng/ml

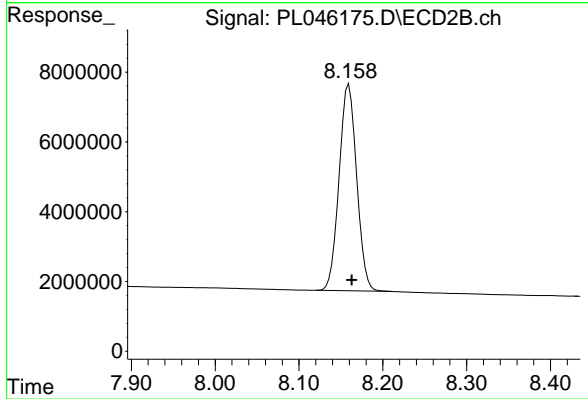
Instrument :
 ECD_L
 ClientSampleId :
 TP-7MS



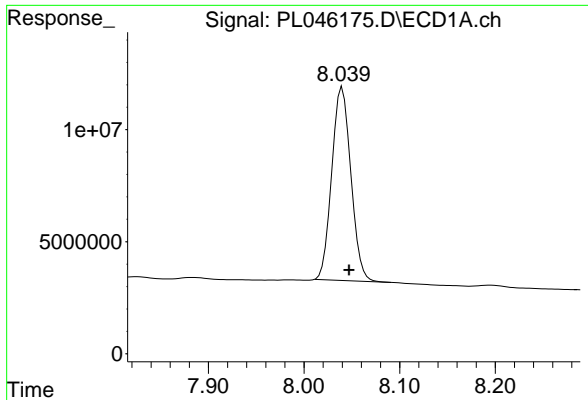
#21 Endrin ketone
 R.T.: 7.707 min
 Delta R.T.: -0.003 min
 Response: 116708755
 Conc: 49.07 ng/ml



#22 Mirex
 R.T.: 7.170 min
 Delta R.T.: -0.006 min
 Response: 301718813
 Conc: 40.55 ng/ml



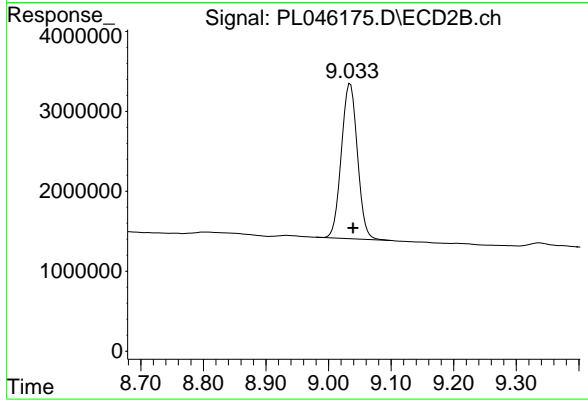
#22 Mirex
 R.T.: 8.159 min
 Delta R.T.: -0.003 min
 Response: 86361083
 Conc: 43.36 ng/ml



#28 Decachlorobiphenyl

R.T.: 8.040 min
Delta R.T.: -0.007 min
Response: 119501991
Conc: 14.28 ng/ml

Instrument :
ECD_L
ClientSampleId :
TP-7MS



#28 Decachlorobiphenyl

R.T.: 9.035 min
Delta R.T.: -0.004 min
Response: 34703863
Conc: 15.19 ng/ml