

Data Path : Z:\pestpcbsrv\HPCHEM1\ECD_L\Data\PL031919\
 Data File : PL046185.D
 Signal(s) : Signal #1: ECD1A.ch Signal #2: ECD2B.ch
 Acq On : 20 Mar 2019 00:40
 Operator : AJ\SJ
 Sample : PSTDCCC050
 Misc :
 ALS Vial : 4 Sample Multiplier: 1

Instrument :
 ECD_L
 ClientSampleId :
 PSTDCCC050

Integration File signal 1: autoint1.e
 Integration File signal 2: autoint2.e
 Quant Time: Mar 20 02:19:51 2019
 Quant Method : Z:\pestpcbsrv\HPCHEM1\ECD_L\methods\PL022719.M
 Quant Title : GC Extractables
 QLast Update : Wed Feb 27 17:00:03 2019
 Response via : Initial Calibration
 Integrator: ChemStation

Volume Inj. : 1 µl
 Signal #1 Phase : ZB-MR2 Signal #2 Phase: ZB-MR1
 Signal #1 Info : 30M x 0.32mm x0.2 Signal #2 Info : 30M x 0.32mm x0.5µm

	Compound	RT#1	RT#2	Resp#1	Resp#2	ng/ml	ng/ml

System Monitoring Compounds							
1)	SA Tetrachlo...	3.361	3.980	345.3E6	108.5E6	50.193	50.662
28)	SA Decachlor...	8.040	9.035	345.0E6	99423741	41.235	43.513
Target Compounds							
2)	A alpha-BHC	3.791	4.370	565.1E6	158.9E6	50.880	52.293
3)	MA gamma-BHC...	4.068	4.654	515.2E6	144.8E6	50.974	51.257
4)	MA Heptachlor	4.356	5.161	496.0E6	142.0E6	47.002	47.724
5)	MB Aldrin	4.596	5.465	497.7E6	138.5E6	51.168	51.269
6)	B beta-BHC	4.321	4.826	210.6E6	65625884	49.125	51.676
7)	B delta-BHC	4.517	5.042	494.7E6	124.5E6	51.761	57.862
8)	B Heptachlo...	5.033	5.851	465.5E6	130.5E6	49.880	54.329
9)	A Endosulfan I	5.365	6.208	440.5E6	123.8E6	49.287	49.700
10)	B gamma-Chl...	5.256	6.085	479.4E6	134.6E6	48.988	50.153
11)	B alpha-Chl...	5.313	6.158	468.4E6	133.3E6	48.304	49.415
12)	B 4,4'-DDE	5.480	6.315	439.3E6	117.3E6	50.047	50.231
13)	MA Dieldrin	5.605	6.464	475.8E6	127.4E6	49.776	49.592
14)	MA Endrin	5.858	6.682	330.2E6	82058404	36.663	36.065
15)	B Endosulfa...	6.132	6.892	425.2E6	110.3E6	49.054	46.907
16)	A 4,4'-DDD	5.991	6.805	403.6E6	102.4E6	55.119	53.267
17)	MA 4,4'-DDT	6.226	7.103	281.0E6	73576467	37.467	37.283
18)	B Endrin al...	6.299	7.015	370.4E6	99940107	50.671	48.890
19)	B Endosulfa...	6.510	7.238	385.0E6	104.2E6	47.368	46.315
20)	A Methoxychlor	6.770	7.562	154.4E6	44686625	35.153	36.407
21)	B Endrin ke...	6.994	7.708	469.5E6	123.1E6	50.963	51.756
22)	Mirex	7.170	8.160	308.6E6	88490305	41.474	44.430

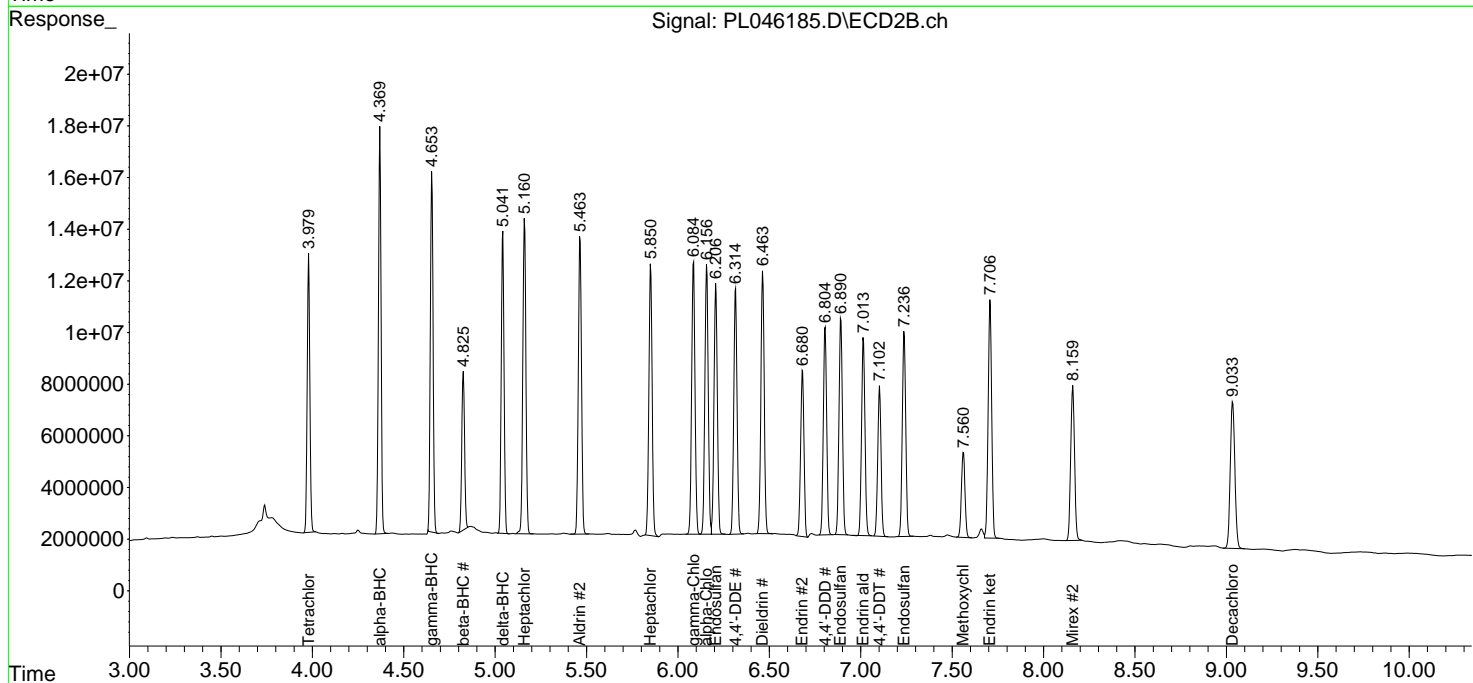
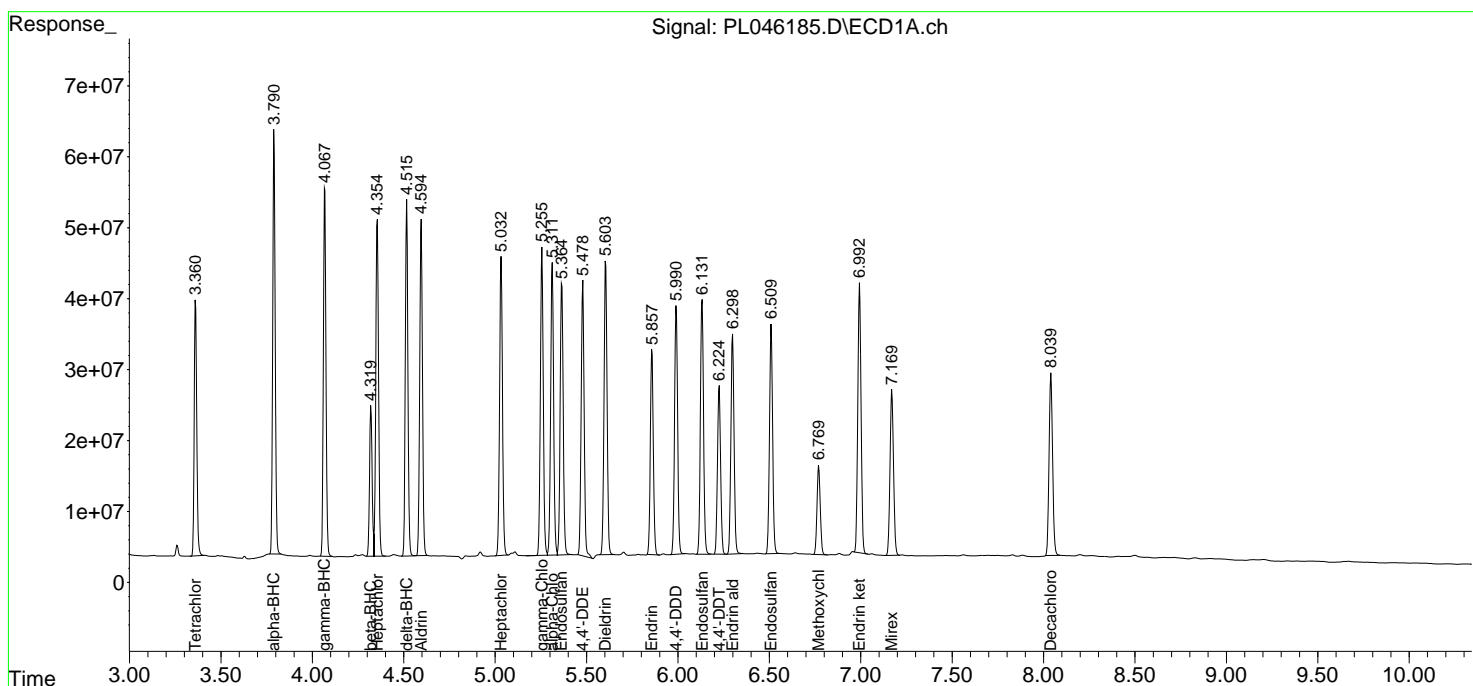
(f)=RT Delta > 1/2 Window (#)=Amounts differ by > 25% (m)=manual int.

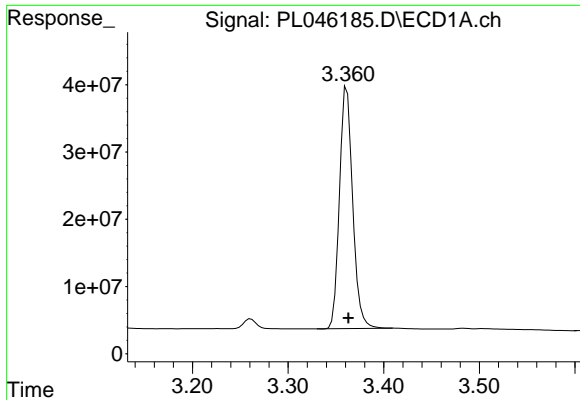
Data Path : Z:\pestpcbsrv\HPCHEM1\ECD_L\Data\PL031919\
 Data File : PL046185.D
 Signal(s) : Signal #1: ECD1A.ch Signal #2: ECD2B.ch
 Acq On : 20 Mar 2019 00:40
 Operator : AJ\SJ
 Sample : PSTDCCC050
 Misc :
 ALS Vial : 4 Sample Multiplier: 1

Instrument :
 ECD_L
 ClientSampleId :
 PSTDCCC050

Integration File signal 1: autoint1.e
 Integration File signal 2: autoint2.e
 Quant Time: Mar 20 02:19:51 2019
 Quant Method : Z:\pestpcbsrv\HPCHEM1\ECD_L\methods\PL022719.M
 Quant Title : GC Extractables
 QLast Update : Wed Feb 27 17:00:03 2019
 Response via : Initial Calibration
 Integrator: ChemStation

Volume Inj. : 1 µl
 Signal #1 Phase : ZB-MR2 Signal #2 Phase: ZB-MR1
 Signal #1 Info : 30M x 0.32mm x0.2 Signal #2 Info : 30M x 0.32mm x0.5µm

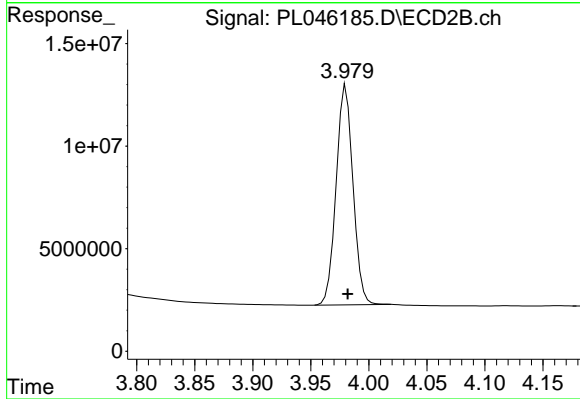




#1 Tetrachloro-m-xylene

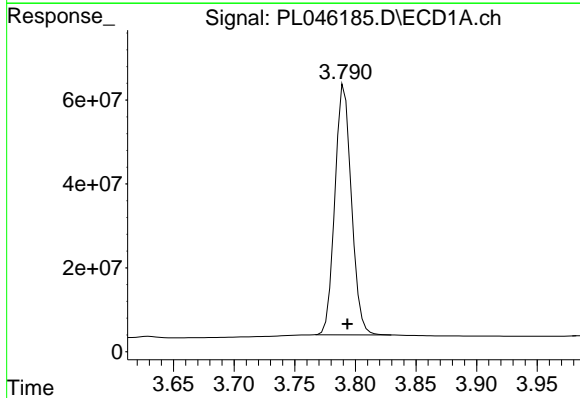
R.T.: 3.361 min
 Delta R.T.: -0.002 min
 Response: 345294295
 Conc: 50.19 ng/ml

Instrument :
 ECD_L
 ClientSampleId :
 PSTDCCC050



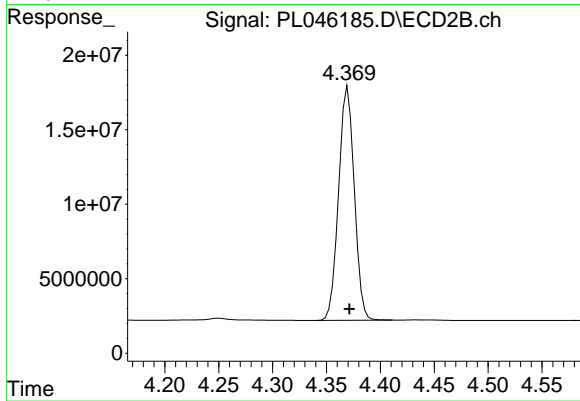
#1 Tetrachloro-m-xylene

R.T.: 3.980 min
 Delta R.T.: -0.001 min
 Response: 108493548
 Conc: 50.66 ng/ml



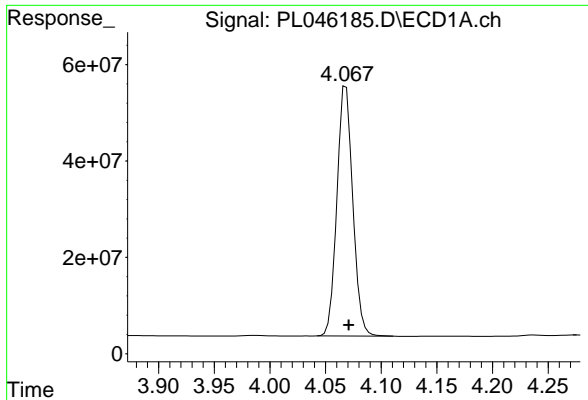
#2 alpha-BHC

R.T.: 3.791 min
 Delta R.T.: -0.003 min
 Response: 565141673
 Conc: 50.88 ng/ml



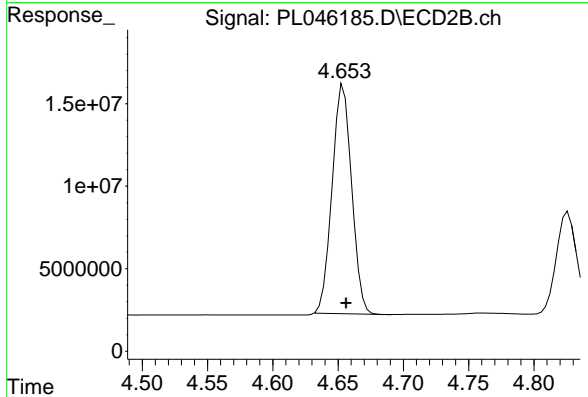
#2 alpha-BHC

R.T.: 4.370 min
 Delta R.T.: -0.001 min
 Response: 158900117
 Conc: 52.29 ng/ml

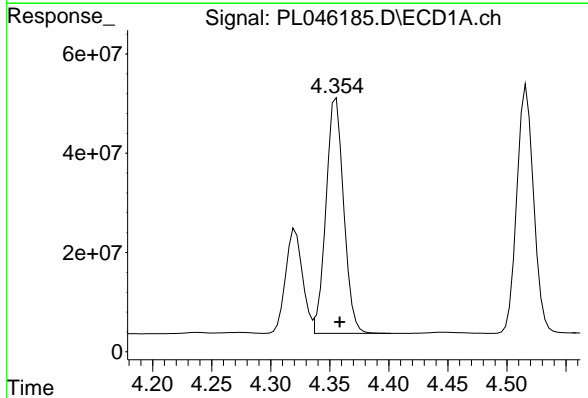


#3 gamma-BHC (Lindane)
 R.T.: 4.068 min
 Delta R.T.: -0.002 min
 Response: 515204722
 Conc: 50.97 ng/ml

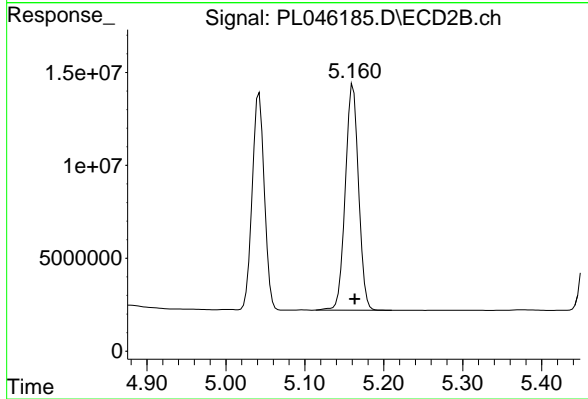
Instrument :
 ECD_L
 ClientSampleId :
 PSTDCCC050



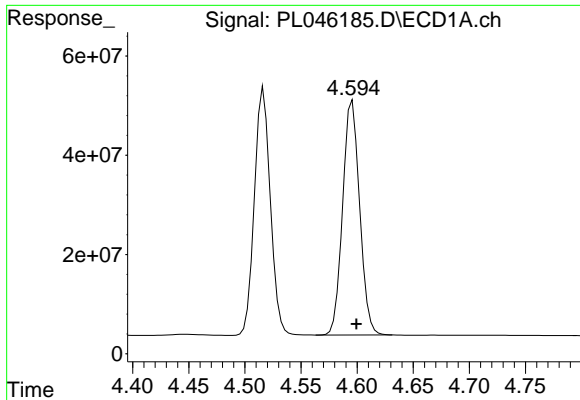
#3 gamma-BHC (Lindane)
 R.T.: 4.654 min
 Delta R.T.: -0.002 min
 Response: 144781608
 Conc: 51.26 ng/ml



#4 Heptachlor
 R.T.: 4.356 min
 Delta R.T.: -0.003 min
 Response: 495972693
 Conc: 47.00 ng/ml

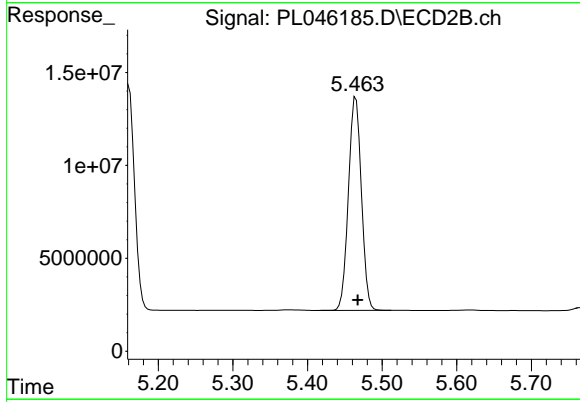


#4 Heptachlor
 R.T.: 5.161 min
 Delta R.T.: -0.002 min
 Response: 141977488
 Conc: 47.72 ng/ml

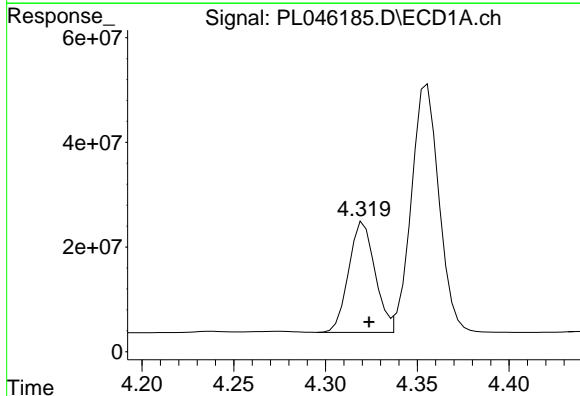


#5 Aldrin
 R.T.: 4.596 min
 Delta R.T.: -0.003 min
 Response: 497682669
 Conc: 51.17 ng/ml

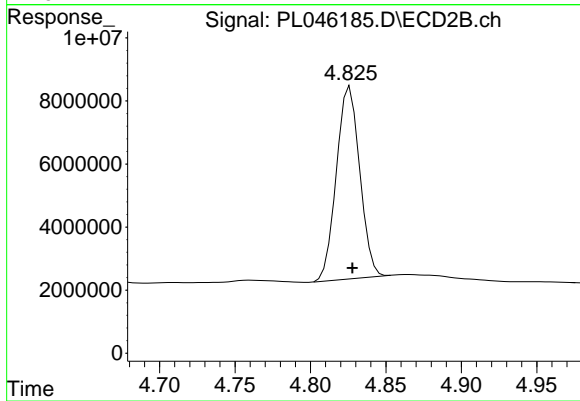
Instrument :
 ECD_L
 ClientSampleId :
 PSTDCCC050



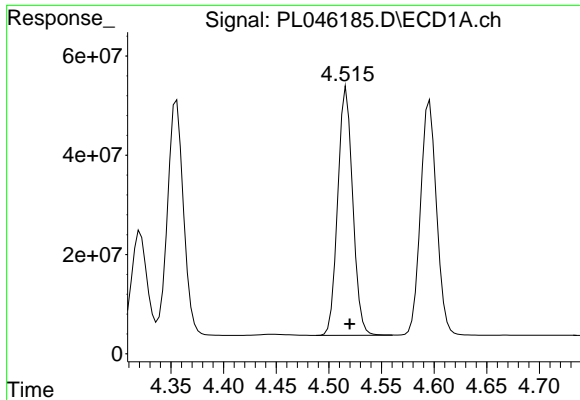
#5 Aldrin
 R.T.: 5.465 min
 Delta R.T.: -0.003 min
 Response: 138475427
 Conc: 51.27 ng/ml



#6 beta-BHC
 R.T.: 4.321 min
 Delta R.T.: -0.003 min
 Response: 210554317
 Conc: 49.13 ng/ml

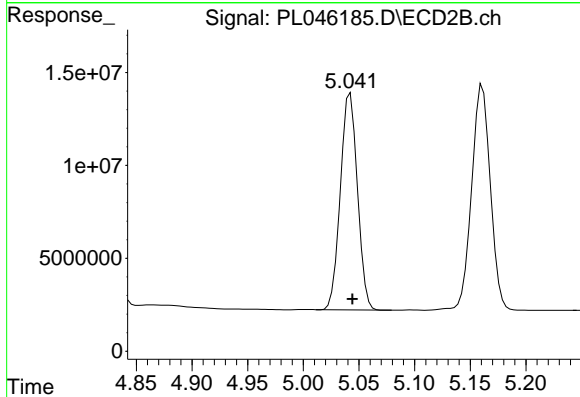


#6 beta-BHC
 R.T.: 4.826 min
 Delta R.T.: -0.001 min
 Response: 65625884
 Conc: 51.68 ng/ml

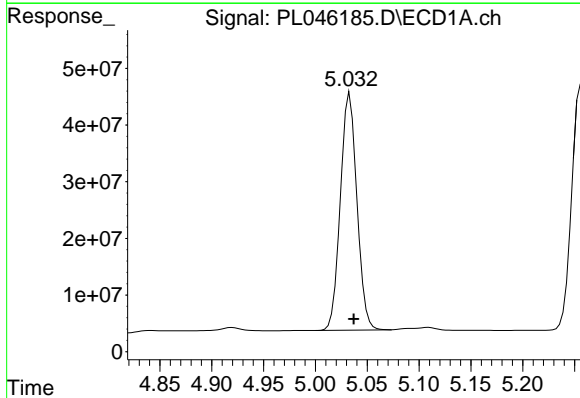


#7 delta-BHC
 R.T.: 4.517 min
 Delta R.T.: -0.003 min
 Response: 494728514
 Conc: 51.76 ng/ml

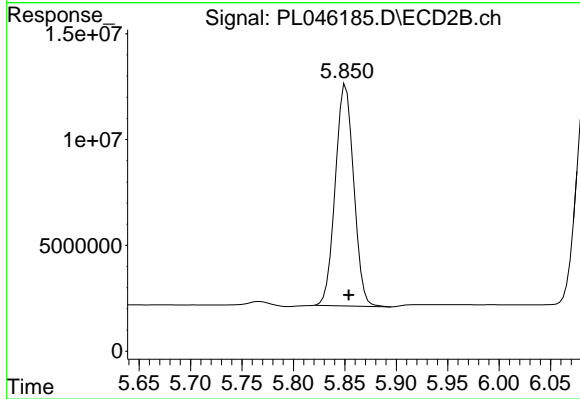
Instrument :
 ECD_L
 ClientSampleId :
 PSTDCCC050



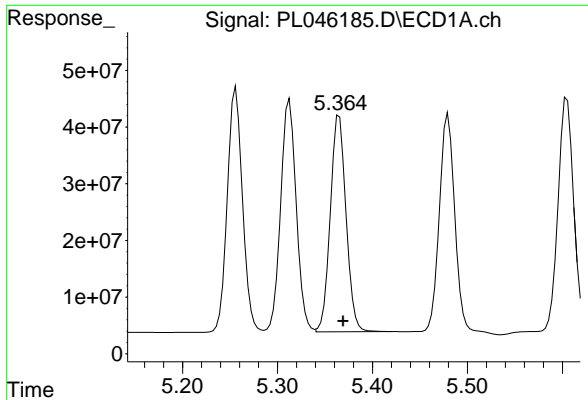
#7 delta-BHC
 R.T.: 5.042 min
 Delta R.T.: -0.002 min
 Response: 124454188
 Conc: 57.86 ng/ml



#8 Heptachlor epoxide
 R.T.: 5.033 min
 Delta R.T.: -0.004 min
 Response: 465531003
 Conc: 49.88 ng/ml

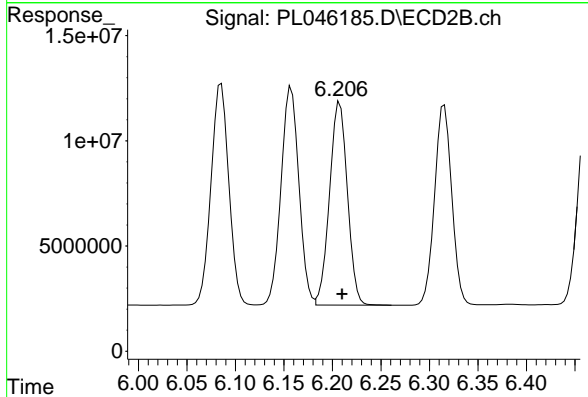


#8 Heptachlor epoxide
 R.T.: 5.851 min
 Delta R.T.: -0.003 min
 Response: 130493856
 Conc: 54.33 ng/ml

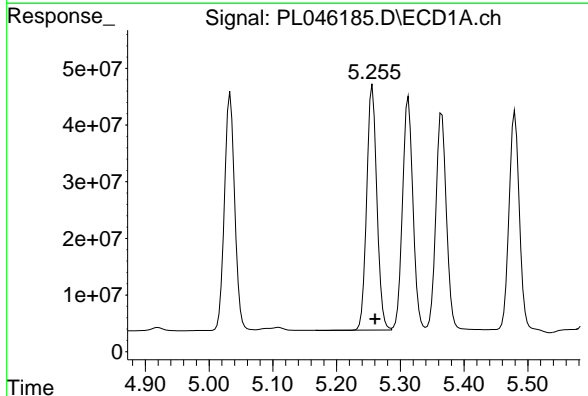


#9 Endosulfan I
 R.T.: 5.365 min
 Delta R.T.: -0.004 min
 Response: 440540641
 Conc: 49.29 ng/ml

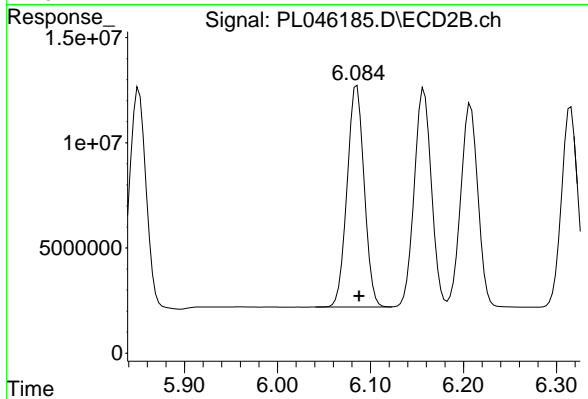
Instrument :
 ECD_L
 ClientSampleId :
 PSTDCCC050



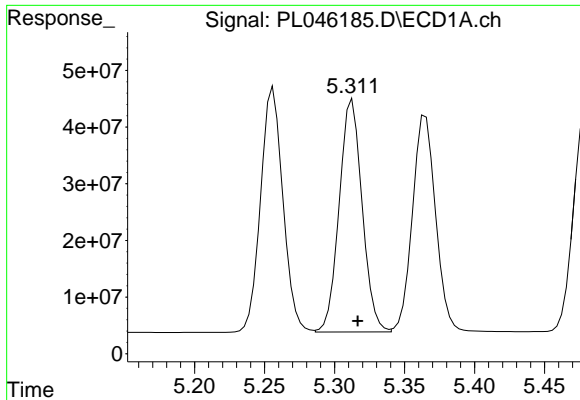
#9 Endosulfan I
 R.T.: 6.208 min
 Delta R.T.: -0.002 min
 Response: 123766621
 Conc: 49.70 ng/ml



#10 gamma-Chlordane
 R.T.: 5.256 min
 Delta R.T.: -0.004 min
 Response: 479440150
 Conc: 48.99 ng/ml

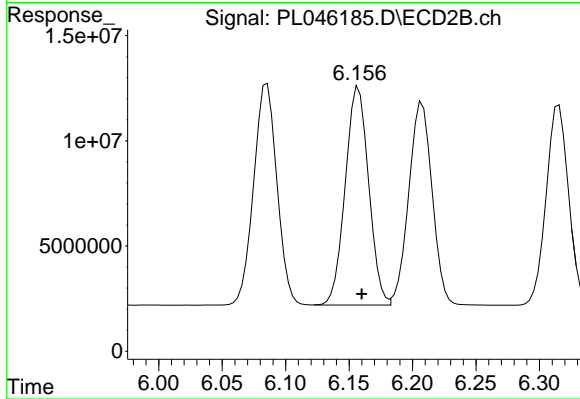


#10 gamma-Chlordane
 R.T.: 6.085 min
 Delta R.T.: -0.002 min
 Response: 134558411
 Conc: 50.15 ng/ml

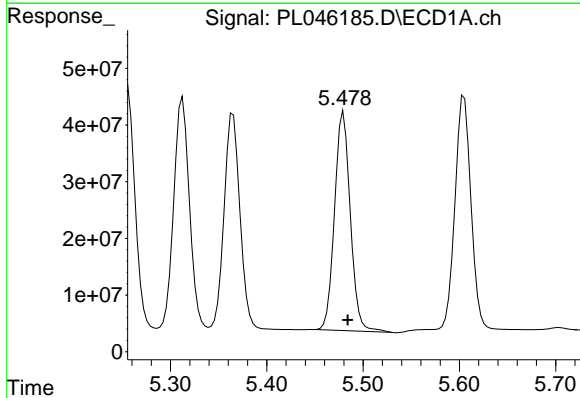


#11 alpha-Chlordane
 R.T.: 5.313 min
 Delta R.T.: -0.004 min
 Response: 468401203
 Conc: 48.30 ng/ml

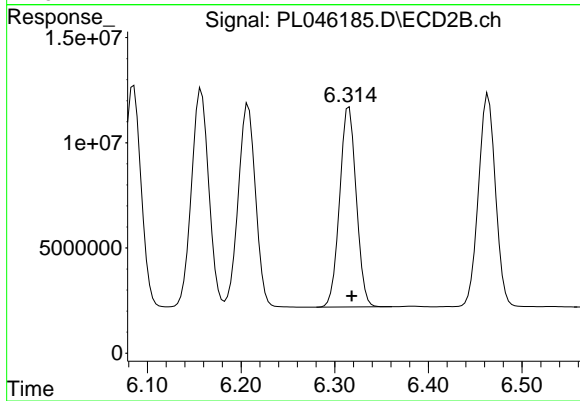
Instrument :
 ECD_L
 ClientSampleId :
 PSTDCCC050



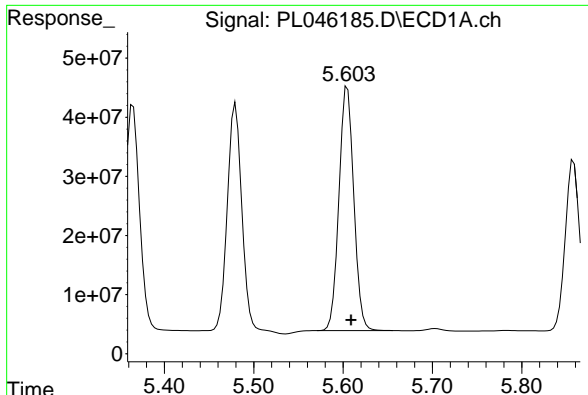
#11 alpha-Chlordane
 R.T.: 6.158 min
 Delta R.T.: -0.002 min
 Response: 133305710
 Conc: 49.41 ng/ml



#12 4,4'-DDE
 R.T.: 5.480 min
 Delta R.T.: -0.004 min
 Response: 439324330
 Conc: 50.05 ng/ml

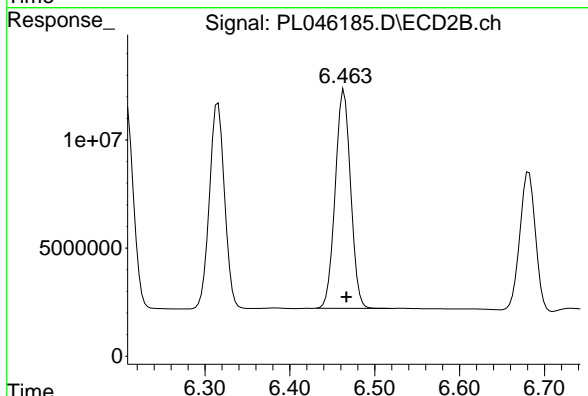


#12 4,4'-DDE
 R.T.: 6.315 min
 Delta R.T.: -0.003 min
 Response: 117335096
 Conc: 50.23 ng/ml

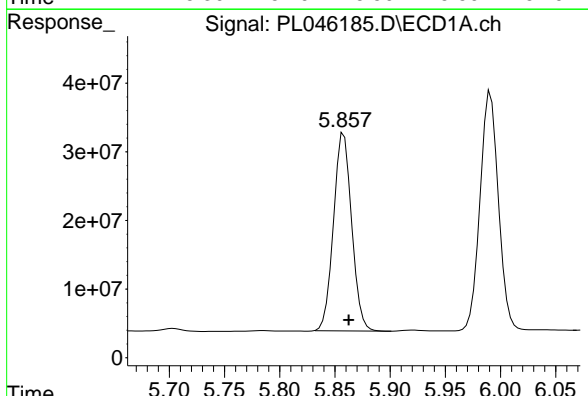


#13 Dieldrin
 R.T.: 5.605 min
 Delta R.T.: -0.004 min
 Response: 475753004
 Conc: 49.78 ng/ml

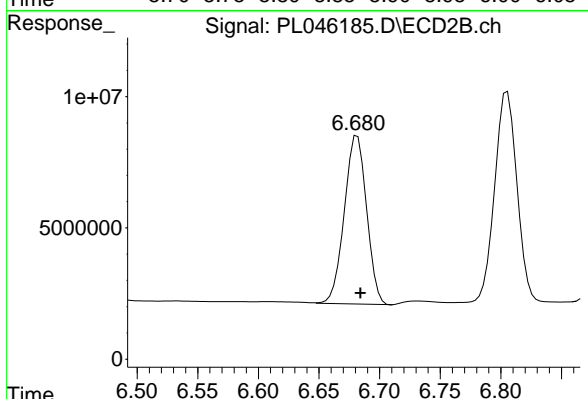
Instrument :
 ECD_L
 ClientSampleId :
 PSTDCCC050



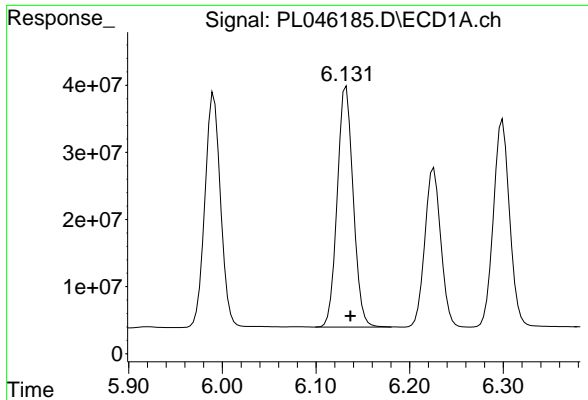
#13 Dieldrin
 R.T.: 6.464 min
 Delta R.T.: -0.003 min
 Response: 127437017
 Conc: 49.59 ng/ml



#14 Endrin
 R.T.: 5.858 min
 Delta R.T.: -0.004 min
 Response: 330176898
 Conc: 36.66 ng/ml

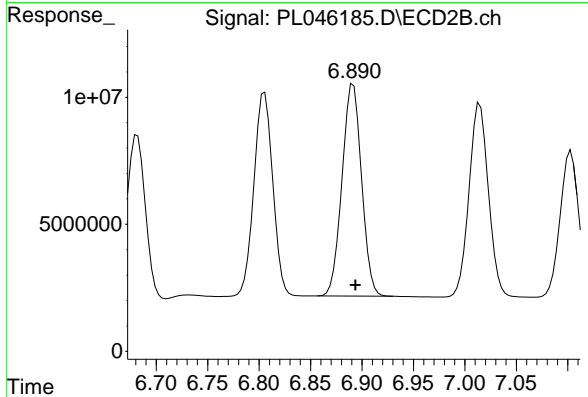


#14 Endrin
 R.T.: 6.682 min
 Delta R.T.: -0.002 min
 Response: 82058404
 Conc: 36.07 ng/ml

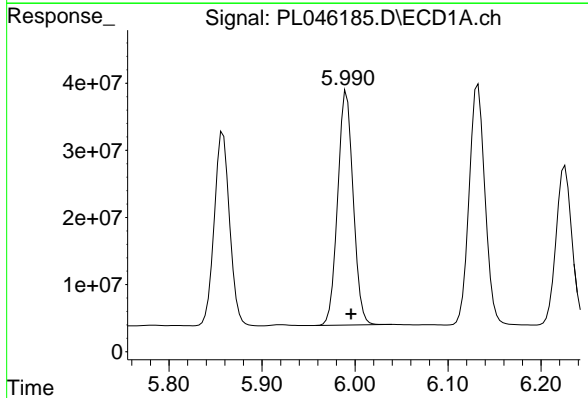


#15 Endosulfan II
 R.T.: 6.132 min
 Delta R.T.: -0.004 min
 Response: 425232090
 Conc: 49.05 ng/ml

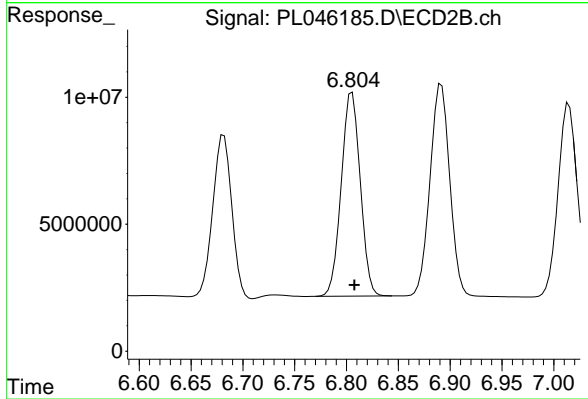
Instrument :
 ECD_L
 ClientSampleId :
 PSTDCCC050



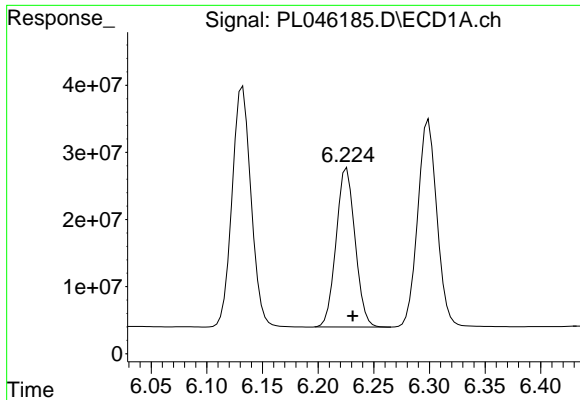
#15 Endosulfan II
 R.T.: 6.892 min
 Delta R.T.: -0.002 min
 Response: 110307163
 Conc: 46.91 ng/ml



#16 4,4'-DDD
 R.T.: 5.991 min
 Delta R.T.: -0.005 min
 Response: 403574263
 Conc: 55.12 ng/ml

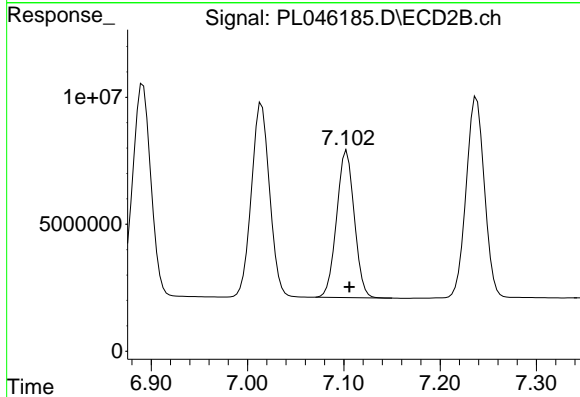


#16 4,4'-DDD
 R.T.: 6.805 min
 Delta R.T.: -0.002 min
 Response: 102436451
 Conc: 53.27 ng/ml

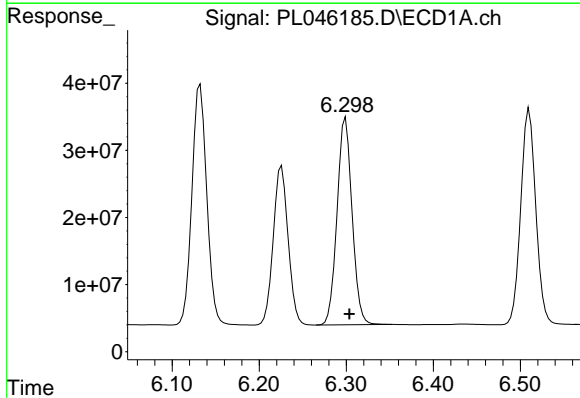


#17 4,4'-DDT
 R.T.: 6.226 min
 Delta R.T.: -0.005 min
 Response: 281006574
 Conc: 37.47 ng/ml

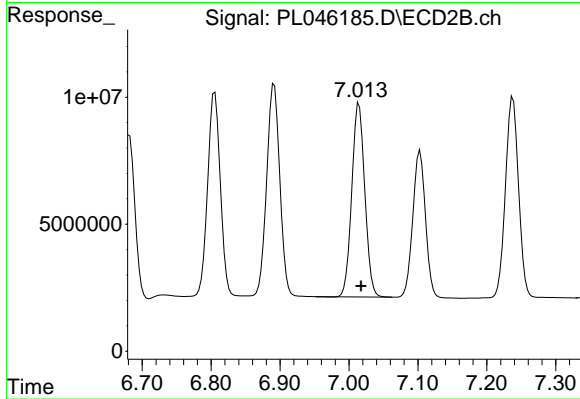
Instrument :
 ECD_L
 ClientSampleId :
 PSTDCCC050



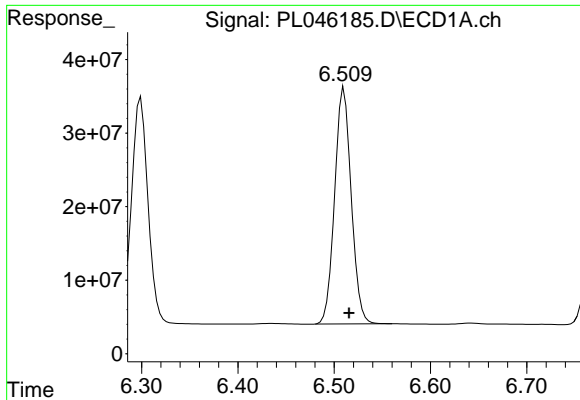
#17 4,4'-DDT
 R.T.: 7.103 min
 Delta R.T.: -0.003 min
 Response: 73576467
 Conc: 37.28 ng/ml



#18 Endrin aldehyde
 R.T.: 6.299 min
 Delta R.T.: -0.004 min
 Response: 370387161
 Conc: 50.67 ng/ml

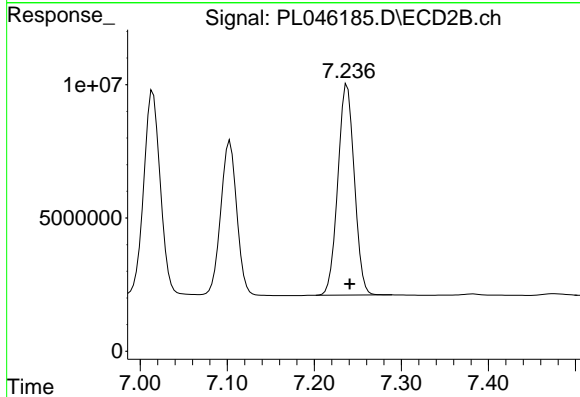


#18 Endrin aldehyde
 R.T.: 7.015 min
 Delta R.T.: -0.003 min
 Response: 99940107
 Conc: 48.89 ng/ml

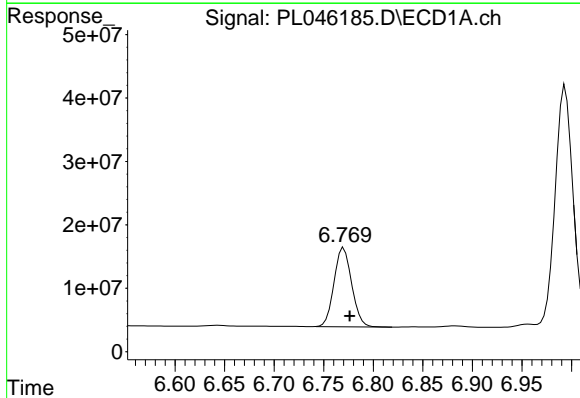


#19 Endosulfan Sulfate
 R.T.: 6.510 min
 Delta R.T.: -0.005 min
 Response: 385014869
 Conc: 47.37 ng/ml

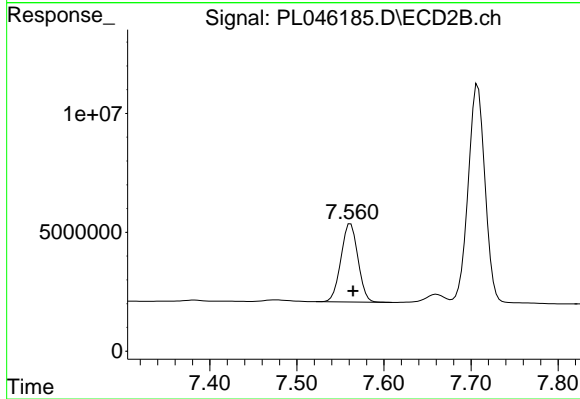
Instrument :
 ECD_L
 ClientSampleId :
 PSTDCCC050



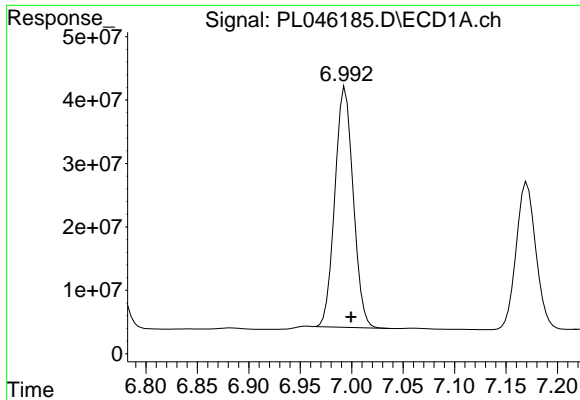
#19 Endosulfan Sulfate
 R.T.: 7.238 min
 Delta R.T.: -0.003 min
 Response: 104186798
 Conc: 46.32 ng/ml



#20 Methoxychlor
 R.T.: 6.770 min
 Delta R.T.: -0.006 min
 Response: 154380141
 Conc: 35.15 ng/ml

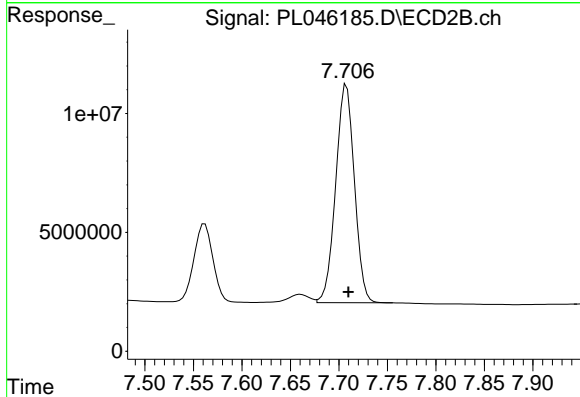


#20 Methoxychlor
 R.T.: 7.562 min
 Delta R.T.: -0.003 min
 Response: 44686625
 Conc: 36.41 ng/ml

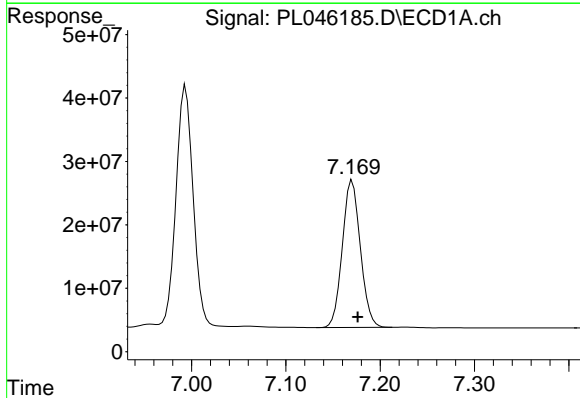


#21 Endrin ketone
 R.T.: 6.994 min
 Delta R.T.: -0.006 min
 Response: 469510707
 Conc: 50.96 ng/ml

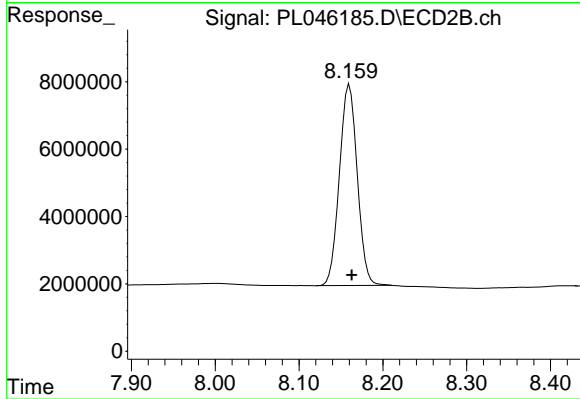
Instrument :
 ECD_L
 ClientSampleId :
 PSTDCCC050



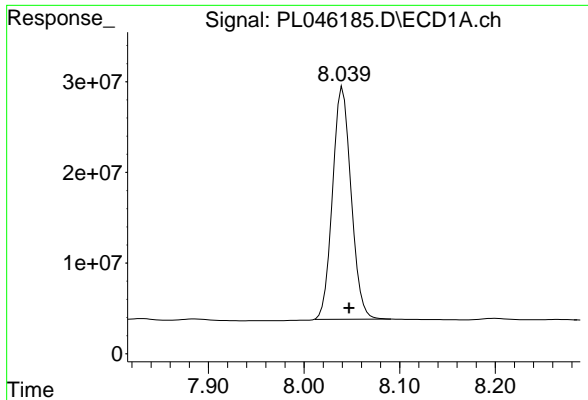
#21 Endrin ketone
 R.T.: 7.708 min
 Delta R.T.: -0.002 min
 Response: 123097509
 Conc: 51.76 ng/ml



#22 Mirex
 R.T.: 7.170 min
 Delta R.T.: -0.006 min
 Response: 308568764
 Conc: 41.47 ng/ml

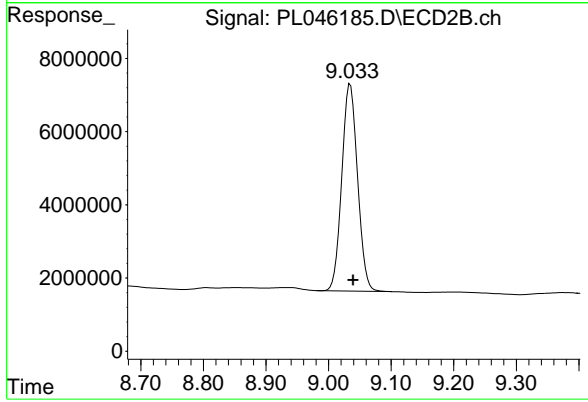


#22 Mirex
 R.T.: 8.160 min
 Delta R.T.: -0.003 min
 Response: 88490305
 Conc: 44.43 ng/ml



#28 Decachlorobiphenyl
R.T.: 8.040 min
Delta R.T.: -0.007 min
Response: 345031465
Conc: 41.23 ng/ml

Instrument :
ECD_L
ClientSampleId :
PSTDCCC050



#28 Decachlorobiphenyl
R.T.: 9.035 min
Delta R.T.: -0.004 min
Response: 99423741
Conc: 43.51 ng/ml