

Data Path : Z:\pestpcbsrv\HPCHEM1\ECD\_L\Data\PL031920\  
 Data File : PL057497.D  
 Signal(s) : Signal #1: ECD1A.ch Signal #2: ECD2B.ch  
 Acq On : 19 Mar 2020 19:23  
 Operator : AJ\MA  
 Sample : L1978-12  
 Misc :  
 ALS Vial : 23 Sample Multiplier: 1

Instrument :  
 ECD\_L  
 ClientSampled :  
 TP-7A

Manual Integrations  
 APPROVED

mohammad  
 3/20/2020 1:21:23 PM

Integration File signal 1: autoint1.e  
 Integration File signal 2: autoint2.e  
 Quant Time: Mar 20 01:25:57 2020  
 Quant Method : Z:\pestpcbsrv\HPCHEM1\ECD\_L\methods\PL031420.M  
 Quant Title : GC Extractables  
 QLast Update : Mon Mar 16 09:40:37 2020  
 Response via : Initial Calibration  
 Integrator: ChemStation

Volume Inj. : 1 µl  
 Signal #1 Phase : ZB-MR2 Signal #2 Phase: ZB-MR1  
 Signal #1 Info : 30M x 0.32mm x0.2 Signal #2 Info : 30M x 0.32mm x0.5µm

Compound	RT#1	RT#2	Resp#1	Resp#2	ng/ml	ng/ml
-----						
System Monitoring Compounds						
1) SA Tetrachlo...	3.457	3.957	195.5E6	44890759	21.091m	20.691
28) SA Decachlor...	8.204	8.976	159.7E6	34230507	15.096	15.438

Target Compounds

(f)=RT Delta > 1/2 Window (#)=Amounts differ by > 25% (m)=manual int.

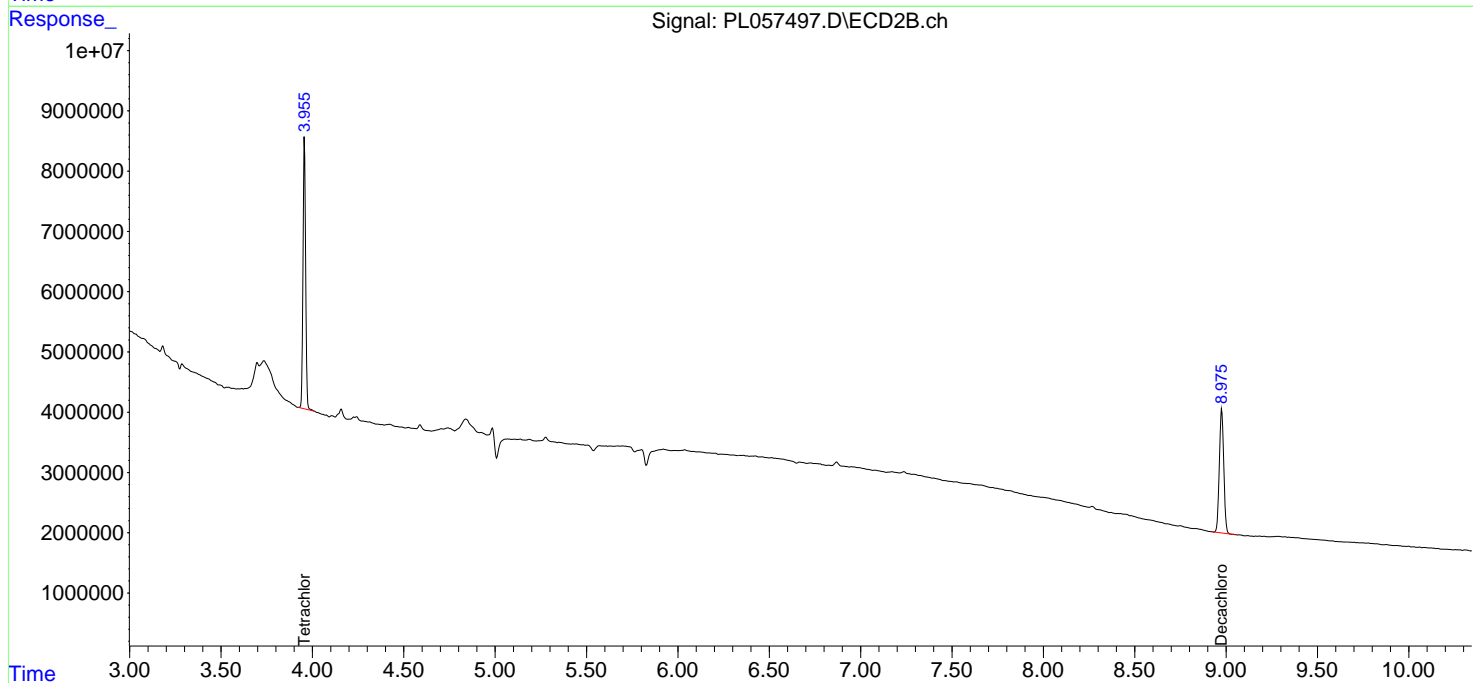
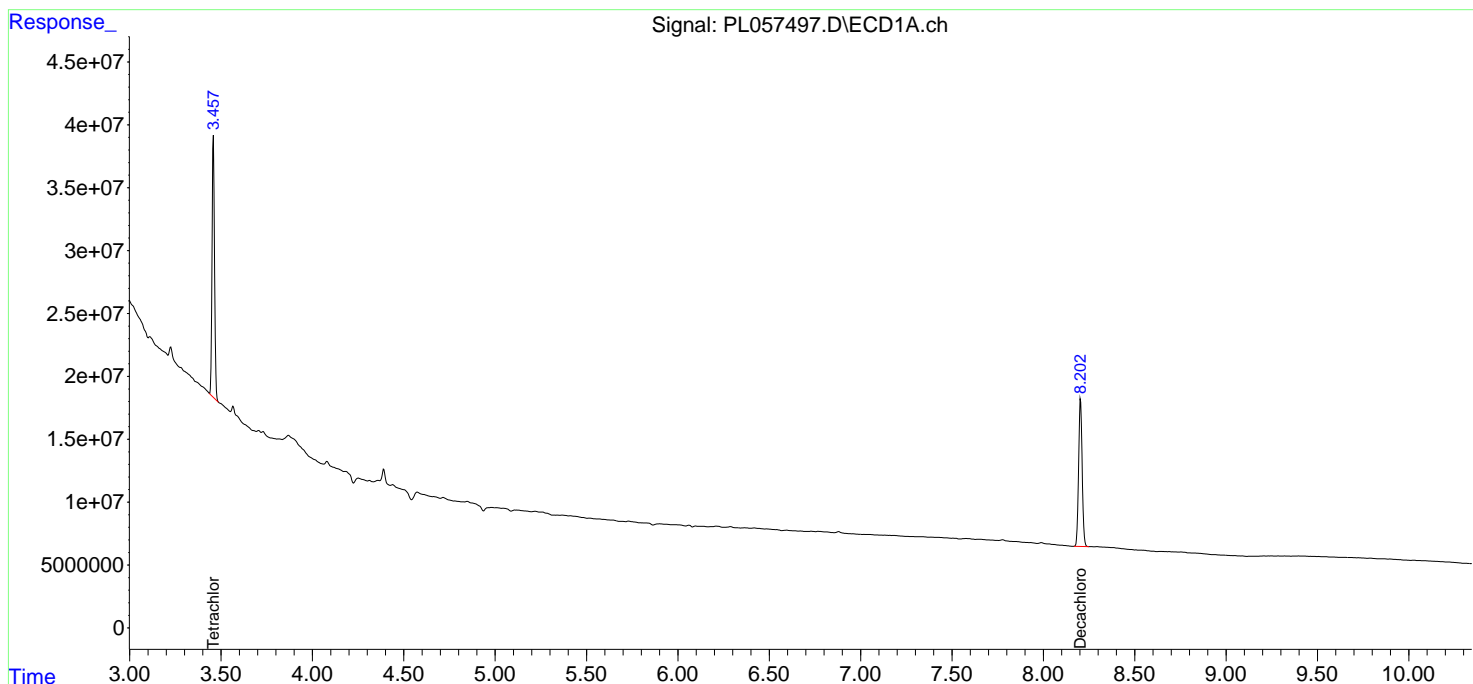
Data Path : Z:\pestpcbsrv\HPCHEM1\ECD\_L\Data\PL031920\  
 Data File : PL057497.D  
 Signal(s) : Signal #1: ECD1A.ch Signal #2: ECD2B.ch  
 Acq On : 19 Mar 2020 19:23  
 Operator : AJ\MA  
 Sample : L1978-12  
 Misc :  
 ALS Vial : 23 Sample Multiplier: 1

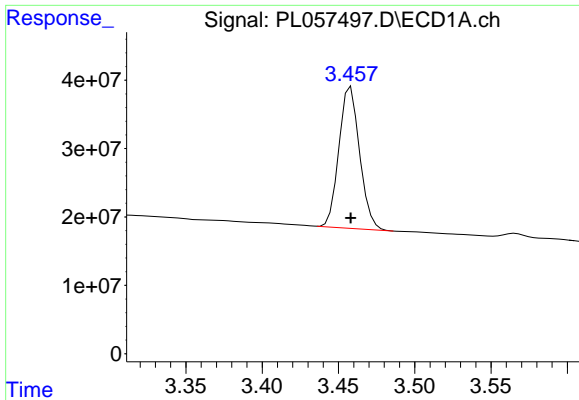
Instrument :  
 ECD\_L  
 ClientSampled :  
 TP-7A

Manual Integrations  
**APPROVED**  
 mohammad  
 3/20/2020 1:21:23 PM

Integration File signal 1: autoint1.e  
 Integration File signal 2: autoint2.e  
 Quant Time: Mar 20 01:25:57 2020  
 Quant Method : Z:\pestpcbsrv\HPCHEM1\ECD\_L\methods\PL031420.M  
 Quant Title : GC Extractables  
 QLast Update : Mon Mar 16 09:40:37 2020  
 Response via : Initial Calibration  
 Integrator: ChemStation

Volume Inj. : 1 µl  
 Signal #1 Phase : ZB-MR2 Signal #2 Phase: ZB-MR1  
 Signal #1 Info : 30M x 0.32mm x0.2 Signal #2 Info : 30M x 0.32mm x0.5µm

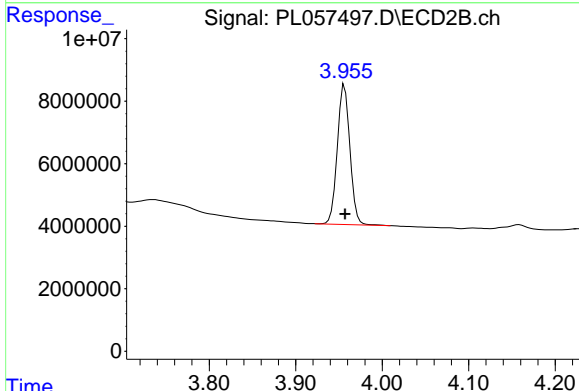




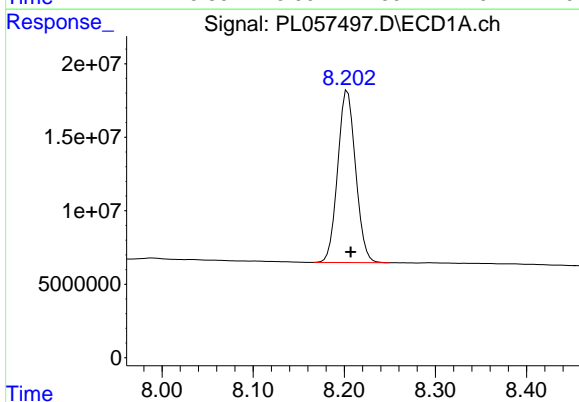
#1 Tetrachloro-m-xylene  
 R.T.: 3.457 min  
 Delta R.T.: -0.001 min  
 Response: 195497470  
 Conc: 21.09 ng/ml m

Instrument :  
 ECD\_L  
 ClientSampleId :  
 TP-7A

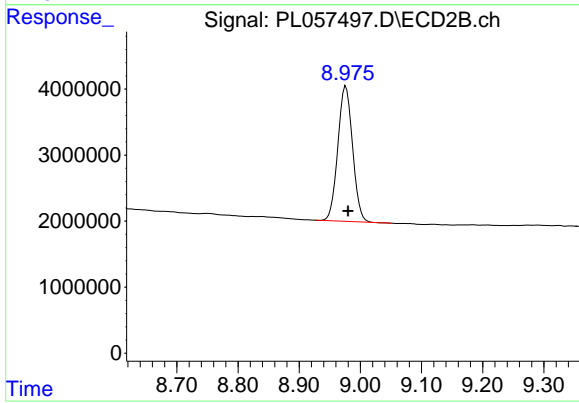
Manual Integrations  
 APPROVED  
 mohammad  
 3/20/2020 1:21:23 PM



#1 Tetrachloro-m-xylene  
 R.T.: 3.957 min  
 Delta R.T.: 0.000 min  
 Response: 44890759  
 Conc: 20.69 ng/ml



#28 Decachlorobiphenyl  
 R.T.: 8.204 min  
 Delta R.T.: -0.003 min  
 Response: 159739682  
 Conc: 15.10 ng/ml



#28 Decachlorobiphenyl  
 R.T.: 8.976 min  
 Delta R.T.: -0.004 min  
 Response: 34230507  
 Conc: 15.44 ng/ml