

Data Path : Z:\pestpcbsrv\HPCHEM1\ECD\_L\Data\PL032019\  
 Data File : PL046213.D  
 Signal(s) : Signal #1: ECD1A.ch Signal #2: ECD2B.ch  
 Acq On : 20 Mar 2019 19:30  
 Operator : AJ\SJ  
 Sample : K1688-38  
 Misc :  
 ALS Vial : 23 Sample Multiplier: 1

Instrument :  
 ECD\_L  
 ClientSampleId :  
 JC-02-031919-I

Integration File signal 1: autoint1.e  
 Integration File signal 2: autoint2.e  
 Quant Time: Mar 21 08:34:37 2019  
 Quant Method : Z:\pestpcbsrv\HPCHEM1\ECD\_L\methods\PL022719.M  
 Quant Title : GC Extractables  
 QLast Update : Wed Feb 27 17:00:03 2019  
 Response via : Initial Calibration  
 Integrator: ChemStation

Volume Inj. : 1 µl  
 Signal #1 Phase : ZB-MR2 Signal #2 Phase: ZB-MR1  
 Signal #1 Info : 30M x 0.32mm x0.2 Signal #2 Info : 30M x 0.32mm x0.5µm

Compound	RT#1	RT#2	Resp#1	Resp#2	ng/ml	ng/ml
-----						
System Monitoring Compounds						
1) SA Tetrachlo...	3.361	3.980	131.0E6	42711429	19.044	19.944
28) SA Decachlor...	8.040	9.035	124.8E6	39485318	14.917	17.281

Target Compounds

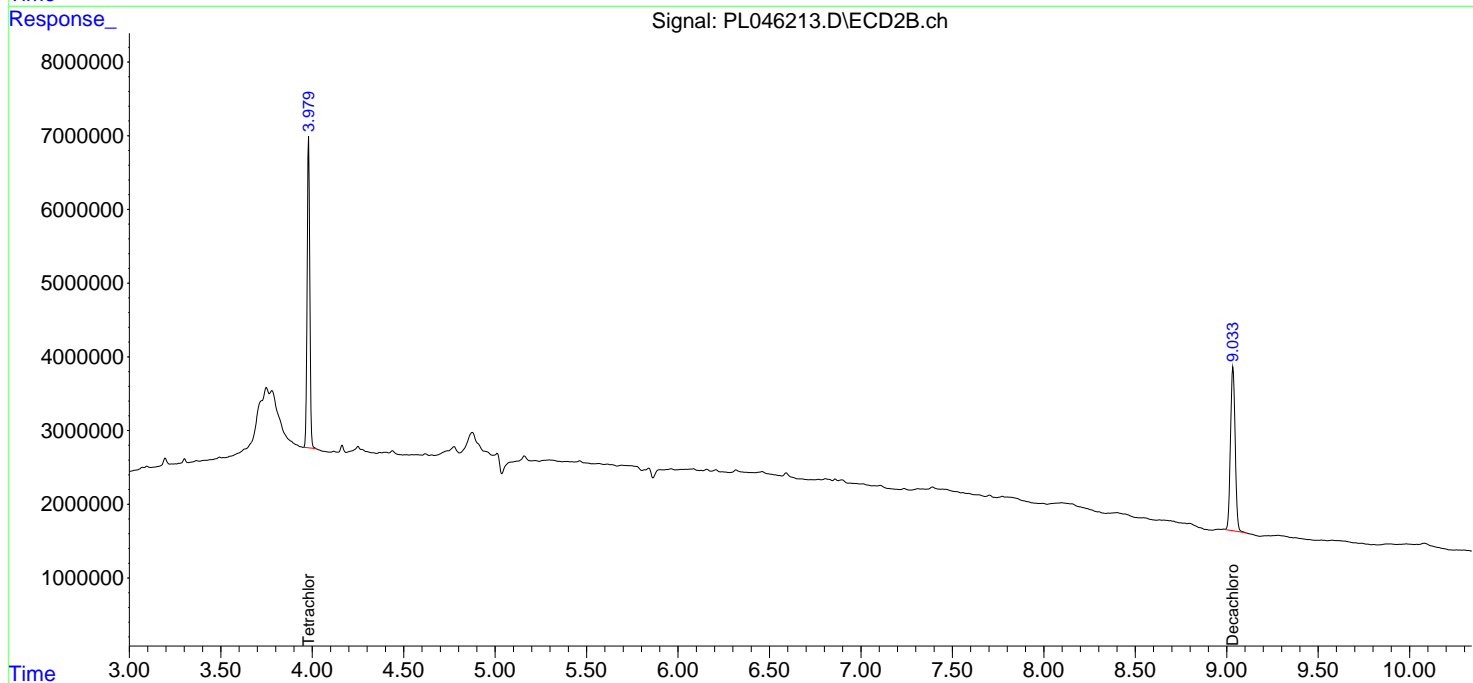
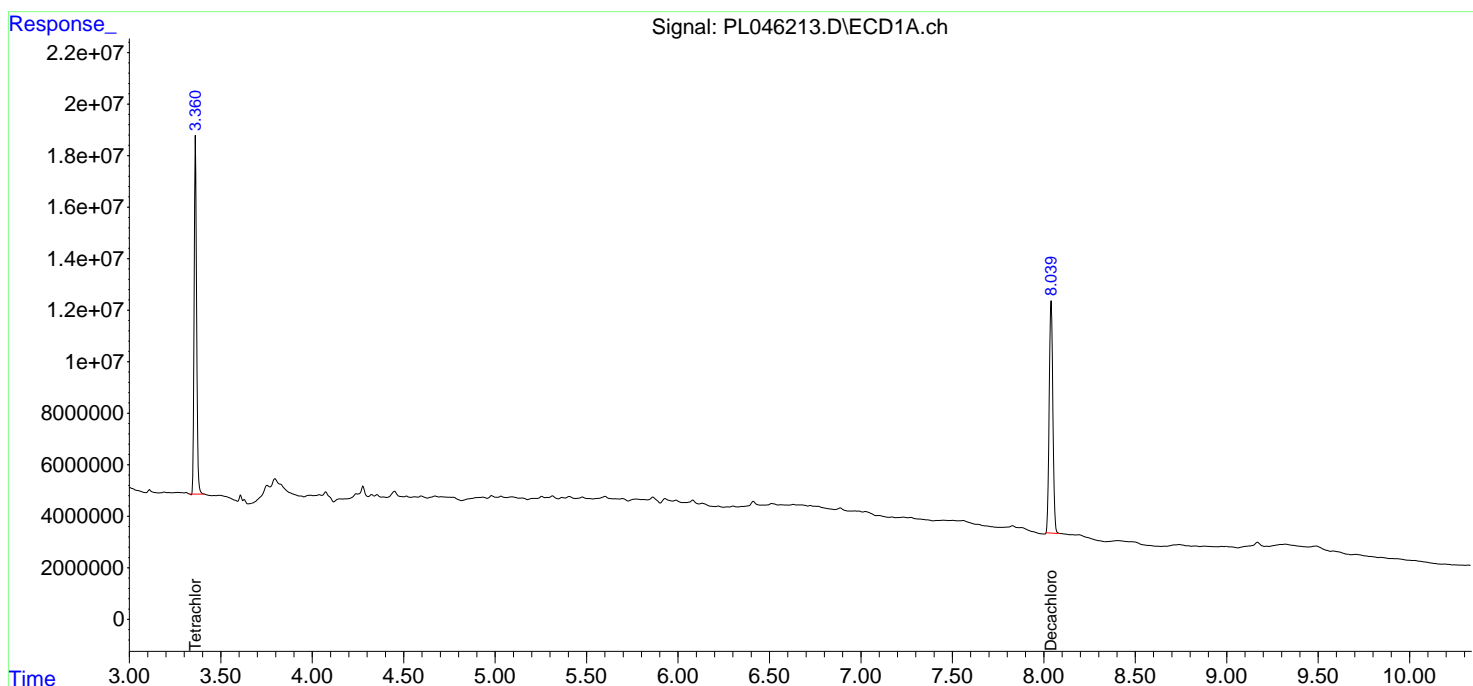
(f)=RT Delta > 1/2 Window (#)=Amounts differ by > 25% (m)=manual int.

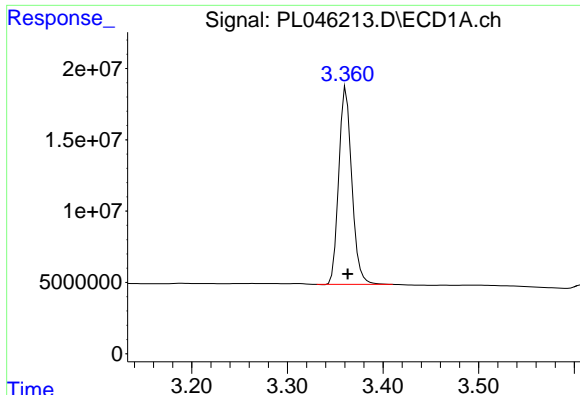
Data Path : Z:\pestpcbsrv\HPCHEM1\ECD\_L\Data\PL032019\  
 Data File : PL046213.D  
 Signal(s) : Signal #1: ECD1A.ch Signal #2: ECD2B.ch  
 Acq On : 20 Mar 2019 19:30  
 Operator : AJ\SJ  
 Sample : K1688-38  
 Misc :  
 ALS Vial : 23 Sample Multiplier: 1

Instrument :  
 ECD\_L  
 ClientSampleId :  
 JC-02-031919-I

Integration File signal 1: autoint1.e  
 Integration File signal 2: autoint2.e  
 Quant Time: Mar 21 08:34:37 2019  
 Quant Method : Z:\pestpcbsrv\HPCHEM1\ECD\_L\methods\PL022719.M  
 Quant Title : GC Extractables  
 QLast Update : Wed Feb 27 17:00:03 2019  
 Response via : Initial Calibration  
 Integrator: ChemStation

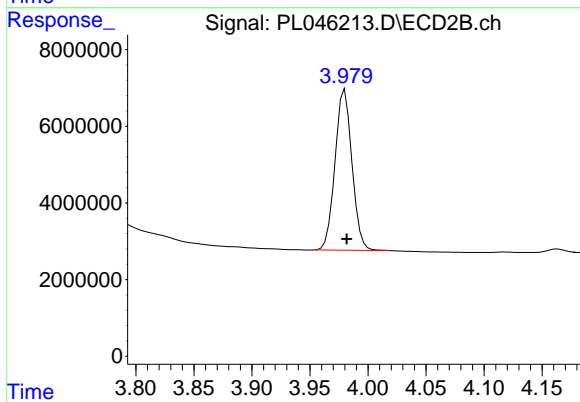
Volume Inj. : 1 µl  
 Signal #1 Phase : ZB-MR2 Signal #2 Phase: ZB-MR1  
 Signal #1 Info : 30M x 0.32mm x0.2 Signal #2 Info : 30M x 0.32mm x0.5µm



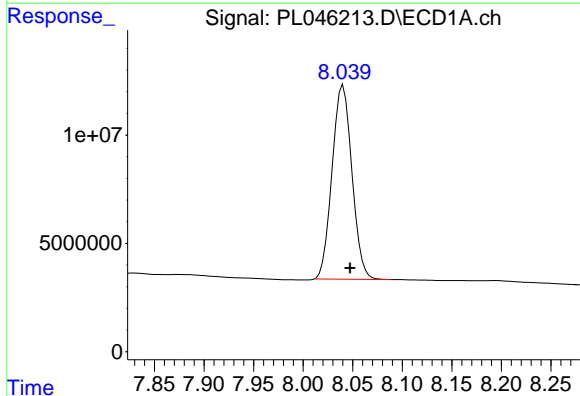


#1 Tetrachloro-m-xylene  
 R.T.: 3.361 min  
 Delta R.T.: -0.002 min  
 Response: 131012380  
 Conc: 19.04 ng/ml

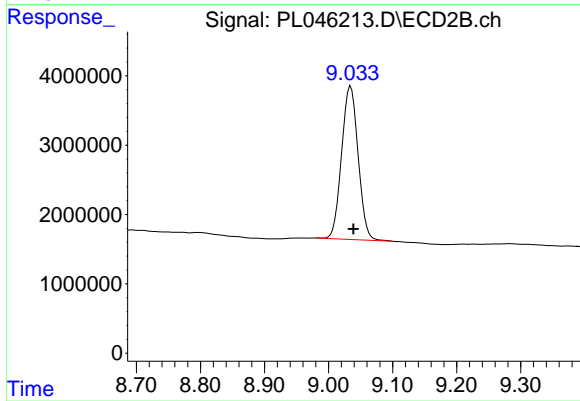
Instrument :  
 ECD\_L  
 ClientSampleId :  
 JC-02-031919-I



#1 Tetrachloro-m-xylene  
 R.T.: 3.980 min  
 Delta R.T.: -0.002 min  
 Response: 42711429  
 Conc: 19.94 ng/ml



#28 Decachlorobiphenyl  
 R.T.: 8.040 min  
 Delta R.T.: -0.007 min  
 Response: 124818819  
 Conc: 14.92 ng/ml



#28 Decachlorobiphenyl  
 R.T.: 9.035 min  
 Delta R.T.: -0.004 min  
 Response: 39485318  
 Conc: 17.28 ng/ml