

Data Path : Z:\pestpcbsrv\HPCHEM1\ECD\_L\Data\PL032119\  
 Data File : PL046268.D  
 Signal(s) : Signal #1: ECD1A.ch Signal #2: ECD2B.ch  
 Acq On : 21 Mar 2019 13:30  
 Operator : AJ\SJ  
 Sample : PB118126BL  
 Misc :  
 ALS Vial : 5 Sample Multiplier: 1

Instrument :  
 ECD\_L  
 ClientSampleId :  
 PB118126BL

Integration File signal 1: autoint1.e  
 Integration File signal 2: autoint2.e  
 Quant Time: Mar 22 01:02:38 2019  
 Quant Method : Z:\pestpcbsrv\HPCHEM1\ECD\_L\methods\PL022719.M  
 Quant Title : GC Extractables  
 QLast Update : Wed Feb 27 17:00:03 2019  
 Response via : Initial Calibration  
 Integrator: ChemStation

Volume Inj. : 1 µl  
 Signal #1 Phase : ZB-MR2 Signal #2 Phase: ZB-MR1  
 Signal #1 Info : 30M x 0.32mm x0.2 Signal #2 Info : 30M x 0.32mm x0.5µm

Compound	RT#1	RT#2	Resp#1	Resp#2	ng/ml	ng/ml
-----						
System Monitoring Compounds						
1) SA Tetrachlo...	3.364	3.979	126.1E6	40998225	18.338	19.144
28) SA Decachlor...	8.044	9.035	152.5E6	41855197	18.231	18.318
Target Compounds						
6) B beta-BHC	0.000	4.845f	0	5234305	N.D.	4.122 #
-----						

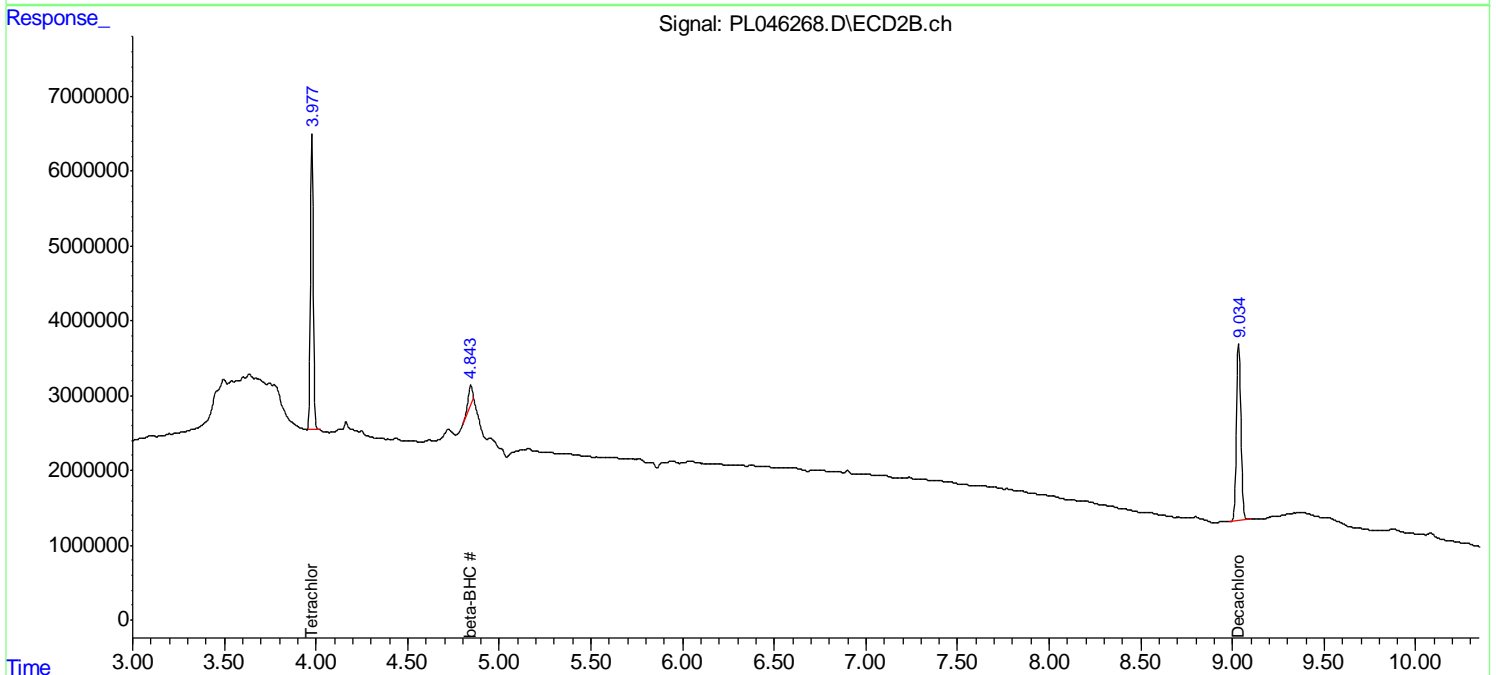
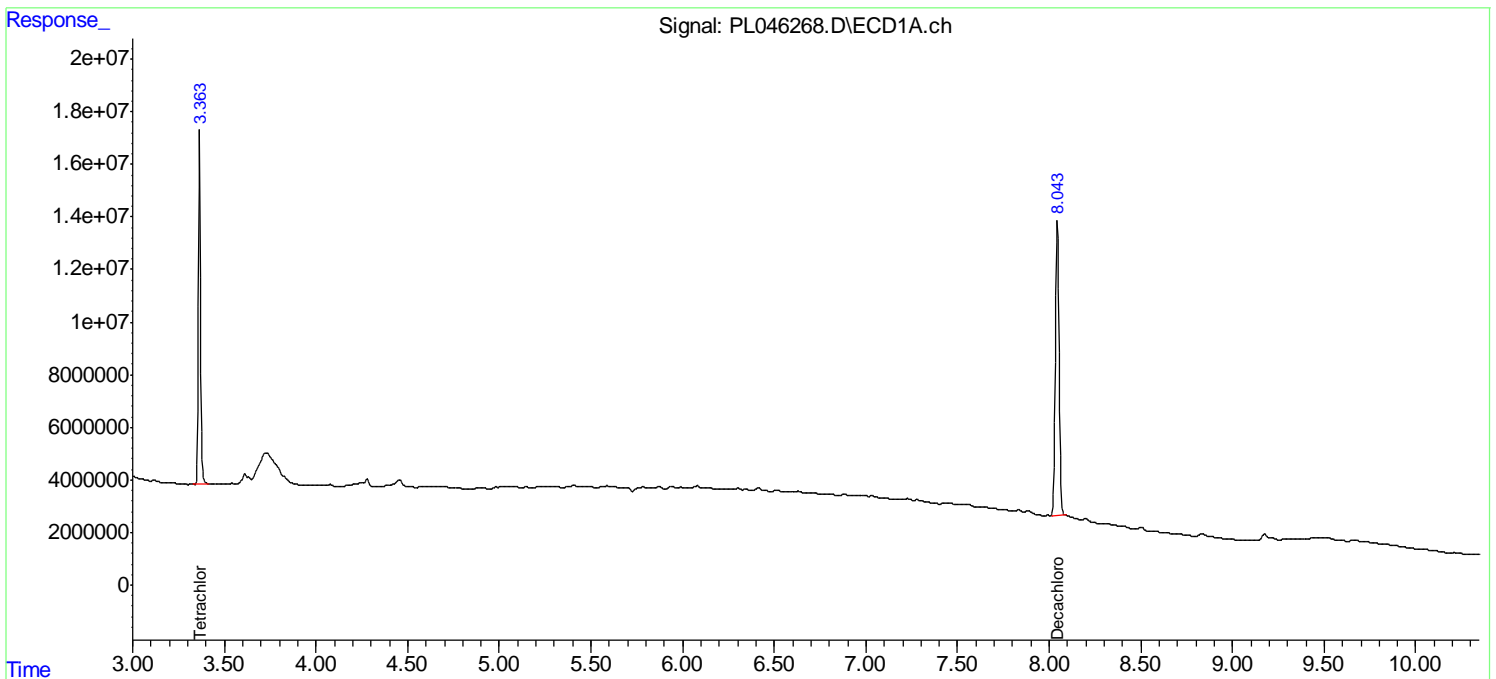
(f)=RT Delta > 1/2 Window (#)=Amounts differ by > 25% (m)=manual int.

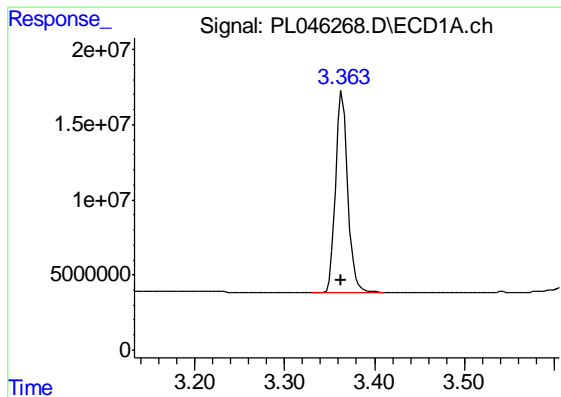
Data Path : Z:\pestpcbsrv\HPCHEM1\ECD\_L\Data\PL032119\  
 Data File : PL046268.D  
 Signal(s) : Signal #1: ECD1A.ch Signal #2: ECD2B.ch  
 Acq On : 21 Mar 2019 13:30  
 Operator : AJ\SJ  
 Sample : PB118126BL  
 Misc :  
 ALS Vial : 5 Sample Multiplier: 1

Instrument :  
 ECD\_L  
 ClientSampleId :  
 PB118126BL

Integration File signal 1: autoint1.e  
 Integration File signal 2: autoint2.e  
 Quant Time: Mar 22 01:02:38 2019  
 Quant Method : Z:\pestpcbsrv\HPCHEM1\ECD\_L\methods\PL022719.M  
 Quant Title : GC Extractables  
 QLast Update : Wed Feb 27 17:00:03 2019  
 Response via : Initial Calibration  
 Integrator: ChemStation

Volume Inj. : 1 µl  
 Signal #1 Phase : ZB-MR2 Signal #2 Phase: ZB-MR1  
 Signal #1 Info : 30M x 0.32mm x0.2 Signal #2 Info : 30M x 0.32mm x0.5µm

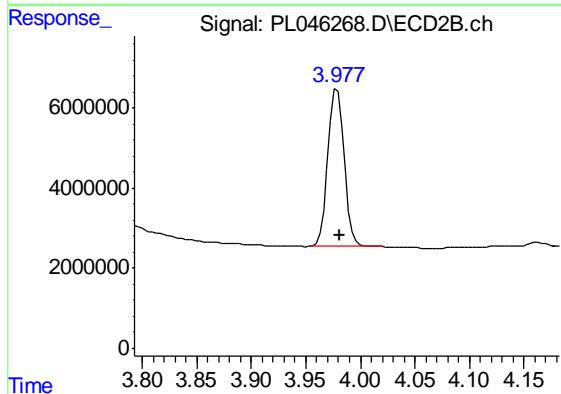




#1 Tetrachloro-m-xylene

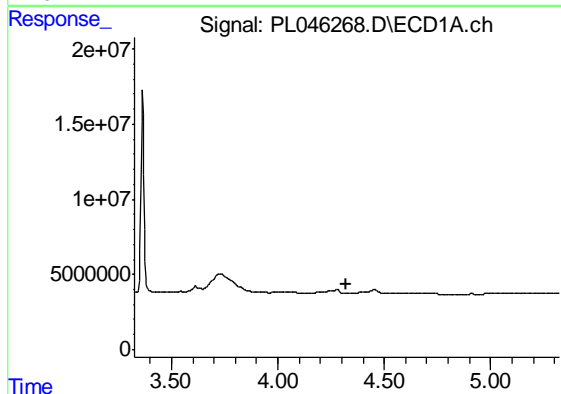
R.T.: 3.364 min  
 Delta R.T.: 0.001 min  
 Response: 126149496  
 Conc: 18.34 ng/ml

Instrument :  
 ECD\_L  
 ClientSampleId :  
 PB118126BL



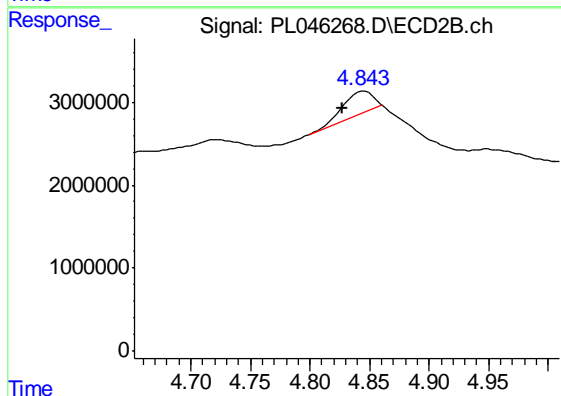
#1 Tetrachloro-m-xylene

R.T.: 3.979 min  
 Delta R.T.: -0.003 min  
 Response: 40998225  
 Conc: 19.14 ng/ml



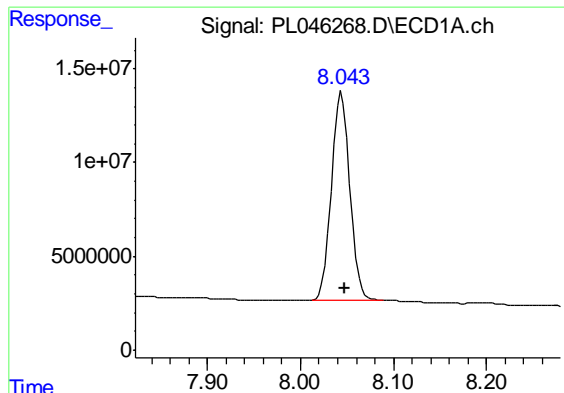
#6 beta-BHC

R.T.: 0.000 min  
 Exp R.T. : 4.324 min  
 Response: 0  
 Conc: N.D.



#6 beta-BHC

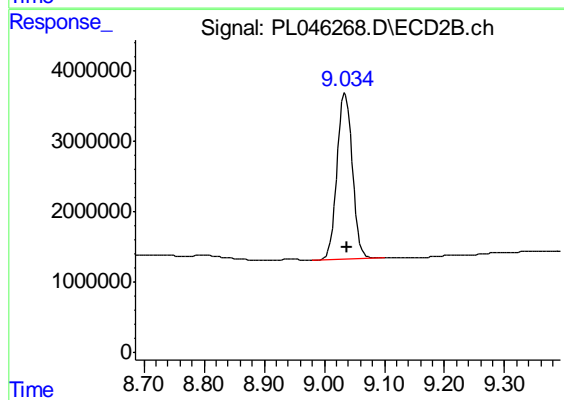
R.T.: 4.845 min  
 Delta R.T.: 0.018 min  
 Response: 5234305  
 Conc: 4.12 ng/ml



#28 Decachlorobiphenyl

R.T.: 8.044 min  
Delta R.T.: -0.003 min  
Response: 152549266  
Conc: 18.23 ng/ml

Instrument :  
ECD\_L  
ClientSampleId :  
PB118126BL



#28 Decachlorobiphenyl

R.T.: 9.035 min  
Delta R.T.: -0.004 min  
Response: 41855197  
Conc: 18.32 ng/ml