

Data Path : Z:\pestpcbsrv\HPCHEM1\ECD_L\Data\PL032122\
 Data File : PL073522.D
 Signal(s) : Signal #1: ECD1A.ch Signal #2: ECD2B.ch
 Acq On : 21 Mar 2022 14:20
 Operator : AR\AJ
 Sample : N2030-01
 Misc :
 ALS Vial : 11 Sample Multiplier: 1

Instrument :
 ECD_L
ClientSampleId :
 MR-1

Manual Integrations
APPROVED

Reviewed By :Abdul Mirza 03/22/2022
 Supervised By :mohammad ahmed 03/23/2022

Integration File signal 1: autoint1.e
 Integration File signal 2: autoint2.e
 Quant Time: Mar 22 01:26:44 2022
 Quant Method : Z:\pestpcbsrv\HPCHEM1\ECD_L\methods\PL031122.M
 Quant Title : GC Extractables
 QLast Update : Mon Mar 14 04:12:46 2022
 Response via : Initial Calibration
 Integrator: ChemStation

Volume Inj. : 1 µl
 Signal #1 Phase : ZB-MR2 Signal #2 Phase: ZB-MR1
 Signal #1 Info : 30M x 0.32mm x0.2 Signal #2 Info : 30M x 0.32mm x0.5µm

Compound	RT#1	RT#2	Resp#1	Resp#2	ng/ml	ng/ml

System Monitoring Compounds						
1) SA Tetrachlo...	4.641	5.491	6918173	34965387	21.600	21.304
28) SA Decachlor...	10.417	11.331	9115536	31335525	17.926	17.524
Target Compounds						
10) B gamma-Chl...	7.364	8.193	1355313	7341720	3.099	3.595m
11) B alpha-Chl...	7.434	8.279	1574466	9118279	3.563	4.559m#
12) B 4,4'-DDE	7.648	8.461	391456	1404797	1.091	0.784m#
17) MA 4,4'-DDT	8.494	9.307	294891	542882	0.780	0.332m#

(f)=RT Delta > 1/2 Window (#)=Amounts differ by > 25% (m)=manual int.

Data Path : Z:\pestpcbsrv\HPCHEM1\ECD_L\Data\PL032122\
 Data File : PL073522.D
 Signal(s) : Signal #1: ECD1A.ch Signal #2: ECD2B.ch
 Acq On : 21 Mar 2022 14:20
 Operator : AR\AJ
 Sample : N2030-01
 Misc :
 ALS Vial : 11 Sample Multiplier: 1

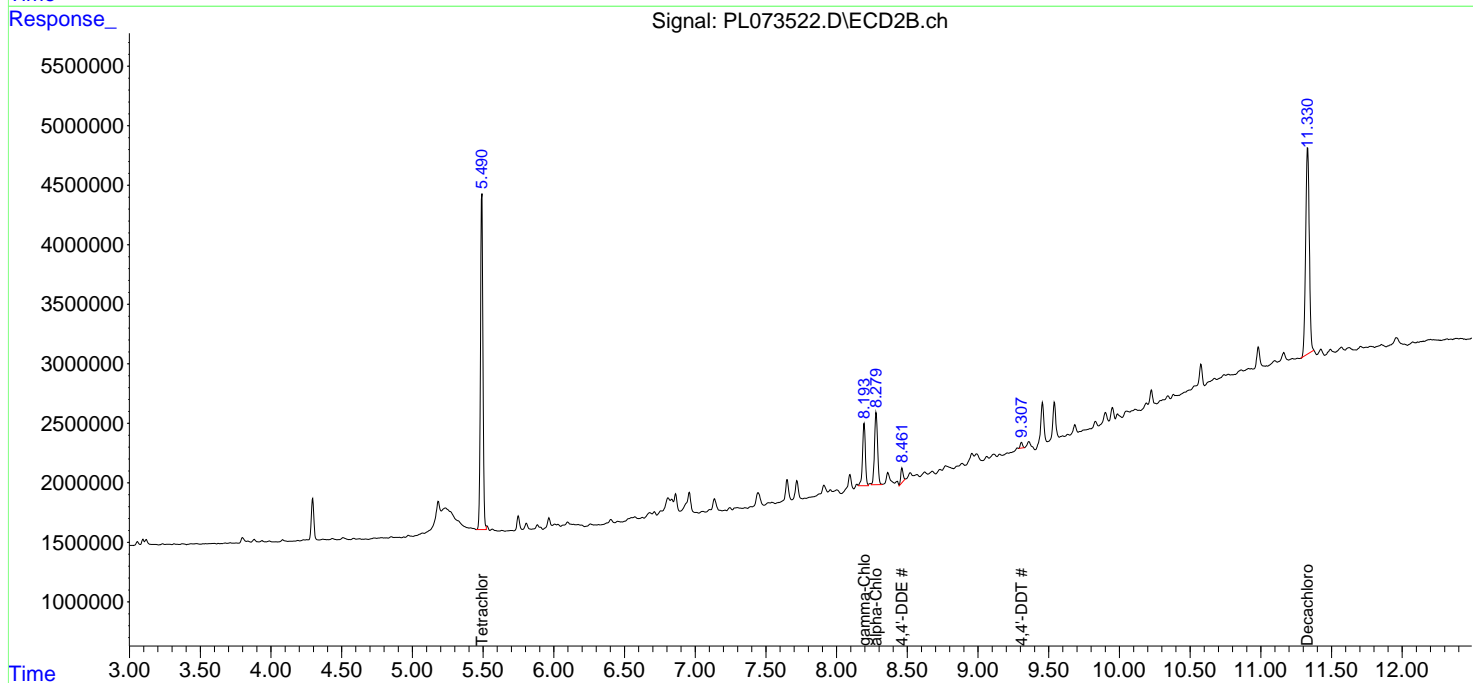
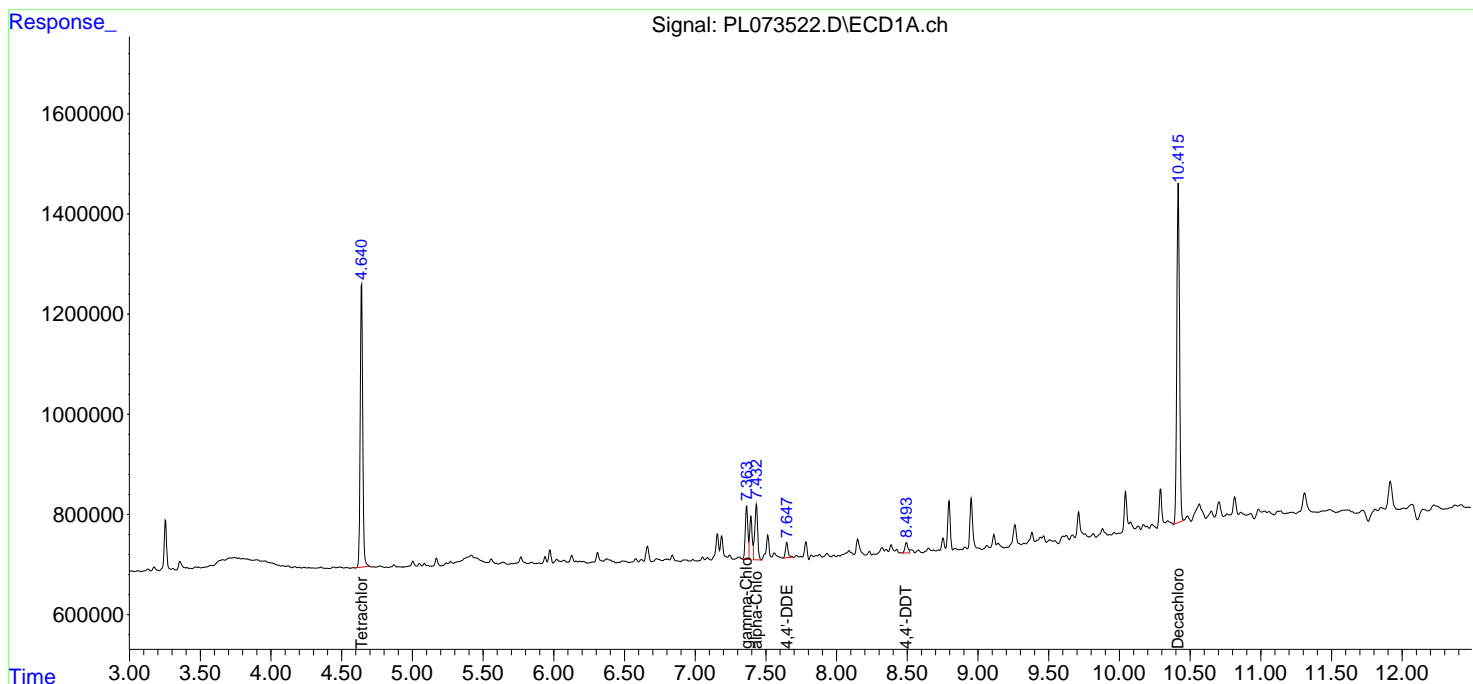
Instrument :
 ECD_L
ClientSampleId :
 MR-1

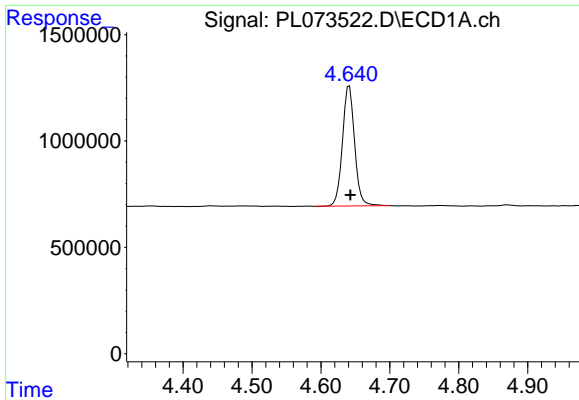
Manual Integrations
APPROVED

Reviewed By :Abdul Mirza 03/22/2022
 Supervised By :mohammad ahmed 03/23/2022

Integration File signal 1: autoint1.e
 Integration File signal 2: autoint2.e
 Quant Time: Mar 22 01:26:44 2022
 Quant Method : Z:\pestpcbsrv\HPCHEM1\ECD_L\methods\PL031122.M
 Quant Title : GC Extractables
 QLast Update : Mon Mar 14 04:12:46 2022
 Response via : Initial Calibration
 Integrator: ChemStation

Volume Inj. : 1 µl
 Signal #1 Phase : ZB-MR2 Signal #2 Phase: ZB-MR1
 Signal #1 Info : 30M x 0.32mm x0.2 Signal #2 Info : 30M x 0.32mm x0.5µm





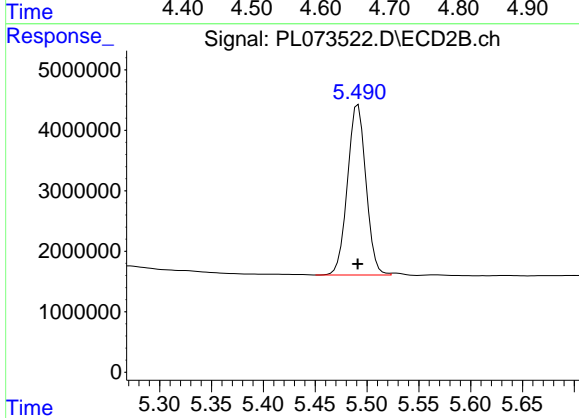
#1 Tetrachloro-m-xylene

R.T.: 4.641 min
 Delta R.T.: -0.002 min
 Response: 6918173
 Conc: 21.60 ng/ml

Instrument : ECD_L
 ClientSampleId : MR-1

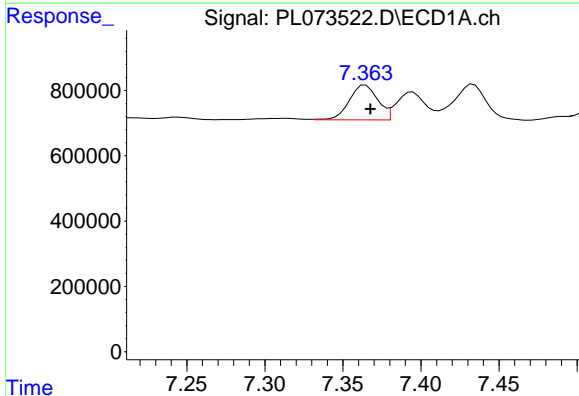
Manual Integrations
 APPROVED

Reviewed By :Abdul Mirza 03/22/2022
 Supervised By :mohammad ahmed 03/23/2022



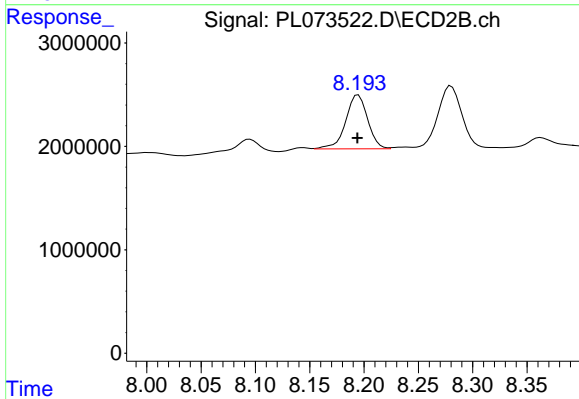
#1 Tetrachloro-m-xylene

R.T.: 5.491 min
 Delta R.T.: 0.000 min
 Response: 34965387
 Conc: 21.30 ng/ml



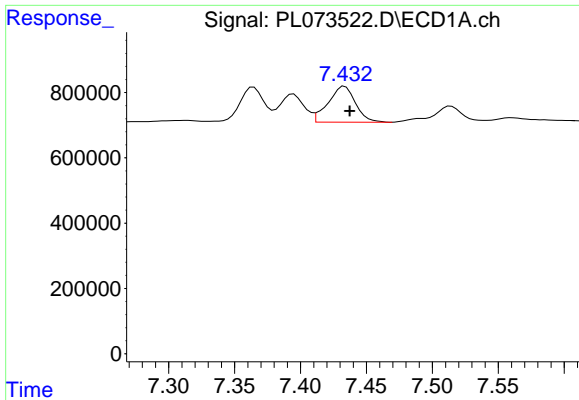
#10 gamma-Chlordane

R.T.: 7.364 min
 Delta R.T.: -0.003 min
 Response: 1355313
 Conc: 3.10 ng/ml



#10 gamma-Chlordane

R.T.: 8.193 min
 Delta R.T.: 0.000 min
 Response: 7341720
 Conc: 3.59 ng/ml m



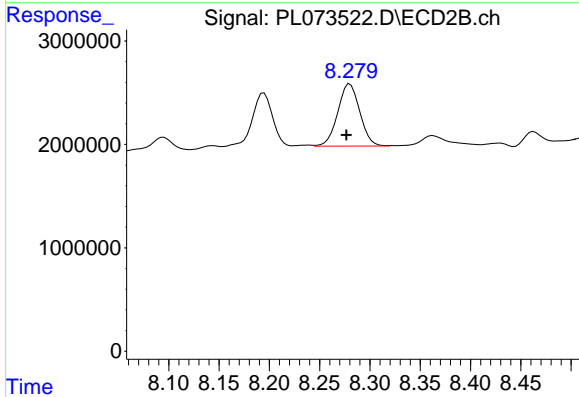
#11 alpha-Chlordane

R.T.: 7.434 min
 Delta R.T.: -0.004 min
 Response: 1574466
 Conc: 3.56 ng/ml

Instrument :
 ECD_L
 ClientSampleId :
 MR-1

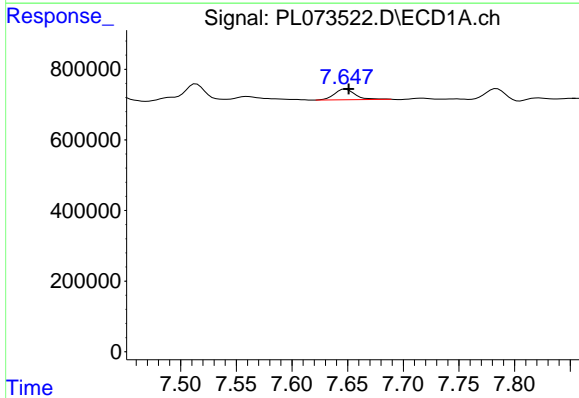
Manual Integrations
 APPROVED

Reviewed By :Abdul Mirza 03/22/2022
 Supervised By :mohammad ahmed 03/23/2022



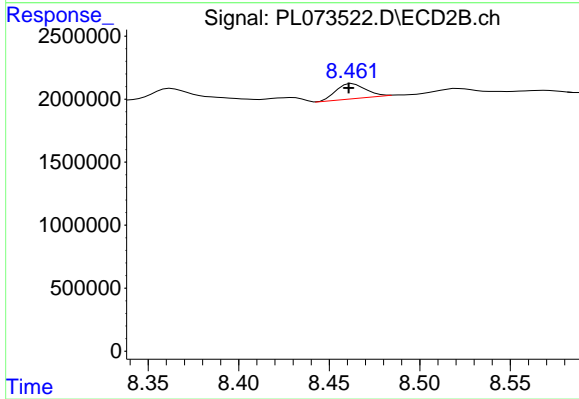
#11 alpha-Chlordane

R.T.: 8.279 min
 Delta R.T.: 0.002 min
 Response: 9118279
 Conc: 4.56 ng/ml m



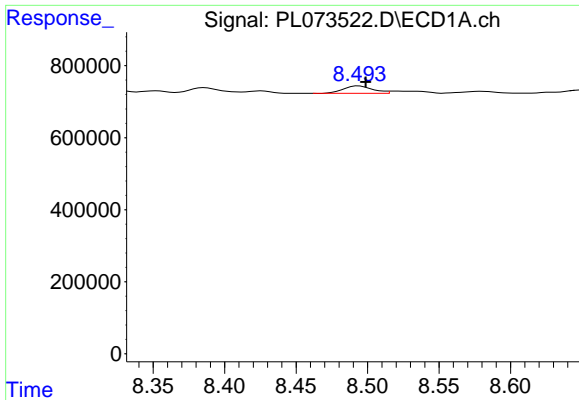
#12 4,4'-DDE

R.T.: 7.648 min
 Delta R.T.: -0.003 min
 Response: 391456
 Conc: 1.09 ng/ml



#12 4,4'-DDE

R.T.: 8.461 min
 Delta R.T.: 0.000 min
 Response: 1404797
 Conc: 0.78 ng/ml m



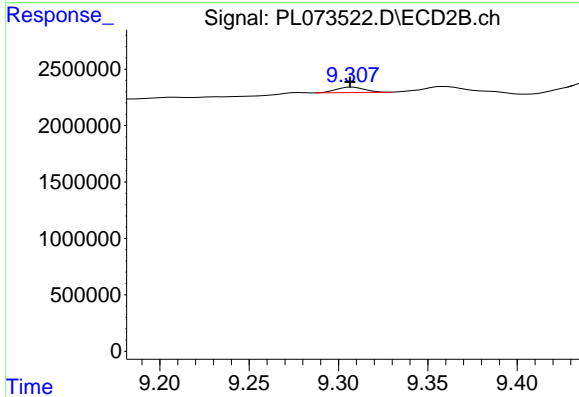
#17 4,4'-DDT

R.T.: 8.494 min
 Delta R.T.: -0.005 min
 Response: 294891
 Conc: 0.78 ng/ml

Instrument :
 ECD_L
 ClientSampleId :
 MR-1

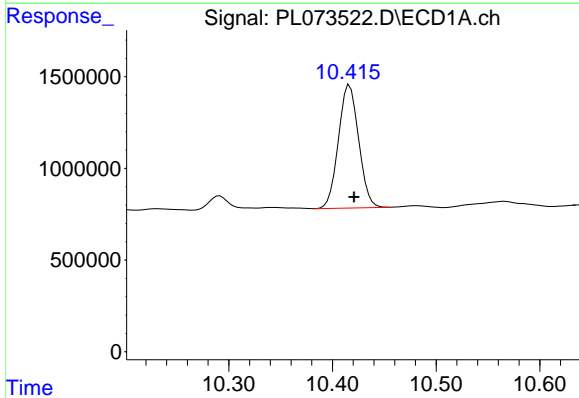
Manual Integrations
 APPROVED

Reviewed By :Abdul Mirza 03/22/2022
 Supervised By :mohammad ahmed 03/23/2022



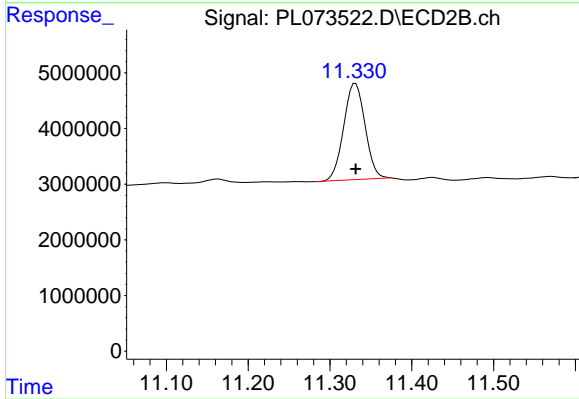
#17 4,4'-DDT

R.T.: 9.307 min
 Delta R.T.: 0.000 min
 Response: 542882
 Conc: 0.33 ng/ml m



#28 Decachlorobiphenyl

R.T.: 10.417 min
 Delta R.T.: -0.004 min
 Response: 9115536
 Conc: 17.93 ng/ml



#28 Decachlorobiphenyl

R.T.: 11.331 min
 Delta R.T.: 0.000 min
 Response: 31335525
 Conc: 17.52 ng/ml