

Data Path : Z:\pestpcbsrv\HPCHEM1\ECD_L\Data\PL032223\
 Data File : PL081659.D
 Signal(s) : Signal #1: ECD1A.ch Signal #2: ECD2B.ch
 Acq On : 23 Mar 2023 09:12
 Operator : AR\AJ
 Sample : I.BLK
 Misc :
 ALS Vial : 2 Sample Multiplier: 1

Instrument :
 ECD_L
 ClientSampleId :
 I.BLK

Integration File signal 1: autoint1.e
 Integration File signal 2: autoint2.e
 Quant Time: Mar 23 10:41:45 2023
 Quant Method : Z:\pestpcbsrv\HPCHEM1\ECD_L\methods\PL032223.M
 Quant Title : GC Extractables
 QLast Update : Thu Mar 23 01:07:33 2023
 Response via : Initial Calibration
 Integrator: ChemStation

Volume Inj. : 1 µl
 Signal #1 Phase : ZB-MR2 Signal #2 Phase: ZB-MR1
 Signal #1 Info : 30M x 0.32mm x0.2 Signal #2 Info : 30M x 0.32mm x0.5µm

Compound	RT#1	RT#2	Resp#1	Resp#2	ng/ml	ng/ml

System Monitoring Compounds						
1) SA Tetrachlo...	3.330	2.659	43984990	36809100	18.911	18.440
28) SA Decachlor...	8.750	7.777	36077457	39602387	20.159	19.968
Target Compounds						
2) A alpha-BHC	0.000	3.143	0	155070	N.D.	0.053 #
3) MA gamma-BHC...	0.000	3.505f	0	789546	N.D.	0.284 #
4) MA Heptachlor	4.689	3.823	215092	72561	0.068	0.025 #
5) MB Aldrin	0.000	4.122f	0	1224199	N.D.	0.459 #
6) B beta-BHC	4.312	3.789	846945	-69574	0.563	N.D. #
7) B delta-BHC	4.546	4.012	3487980	96928	1.148	0.037 #
8) B Heptachlo...	5.449	4.598	2827553	296039	1.040	0.122 #
9) A Endosulfan I	5.824	0.000	222132	0	0.090	N.D. #
10) B gamma-Chl...	0.000	4.847	0	281440	N.D.	0.116 #
11) B alpha-Chl...	0.000	4.922	0	283273	N.D.	0.117 #
12) B 4,4'-DDE	0.000	5.113	0	2888070	N.D.	1.466 #
13) MA Dieldrin	0.000	5.228	0	110429	N.D.	0.049 #
15) B Endosulfa...	6.546	0.000	578218	0	0.272	N.D. #
17) MA 4,4'-DDT	0.000	5.906	0	271751	N.D.	0.158 #
18) B Endrin al...	0.000	6.000f	0	317996	N.D.	0.205 #
19) B Endosulfa...	0.000	6.215	0	50498	N.D.	0.026 #
21) B Endrin ke...	0.000	6.704	0	65414	N.D.	0.031 #
22) Mirex	7.896f	6.872	178273	-6193	0.104	N.D. #
24) Chlordane-2	0.000	4.245f	0	909135	N.D.	9.732 #
25) Chlordane-3	0.000	4.847	0	281440	N.D.	1.117 #
26) Chlordane-4	0.000	4.922	0	283273	N.D.	1.081 #
27) Chlordane-5	6.607f	0.000	594982	0	7.007	N.D. #

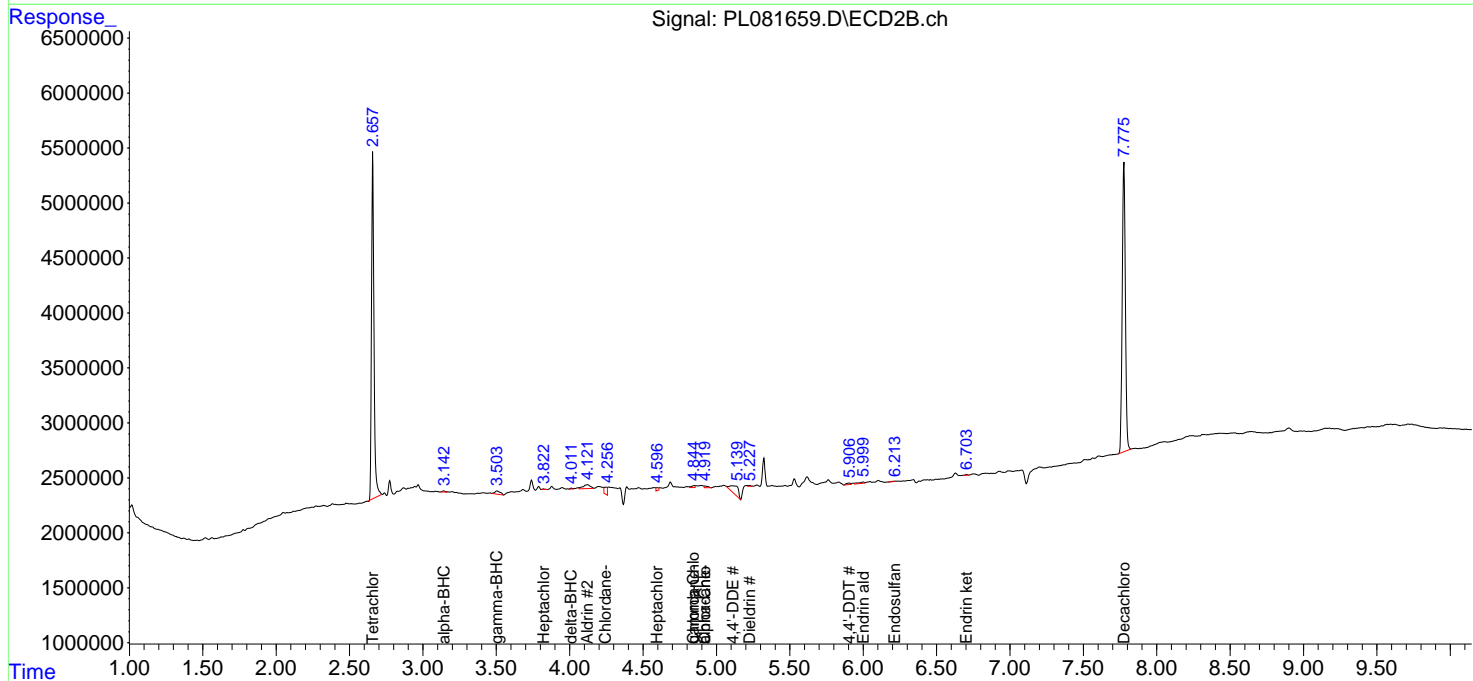
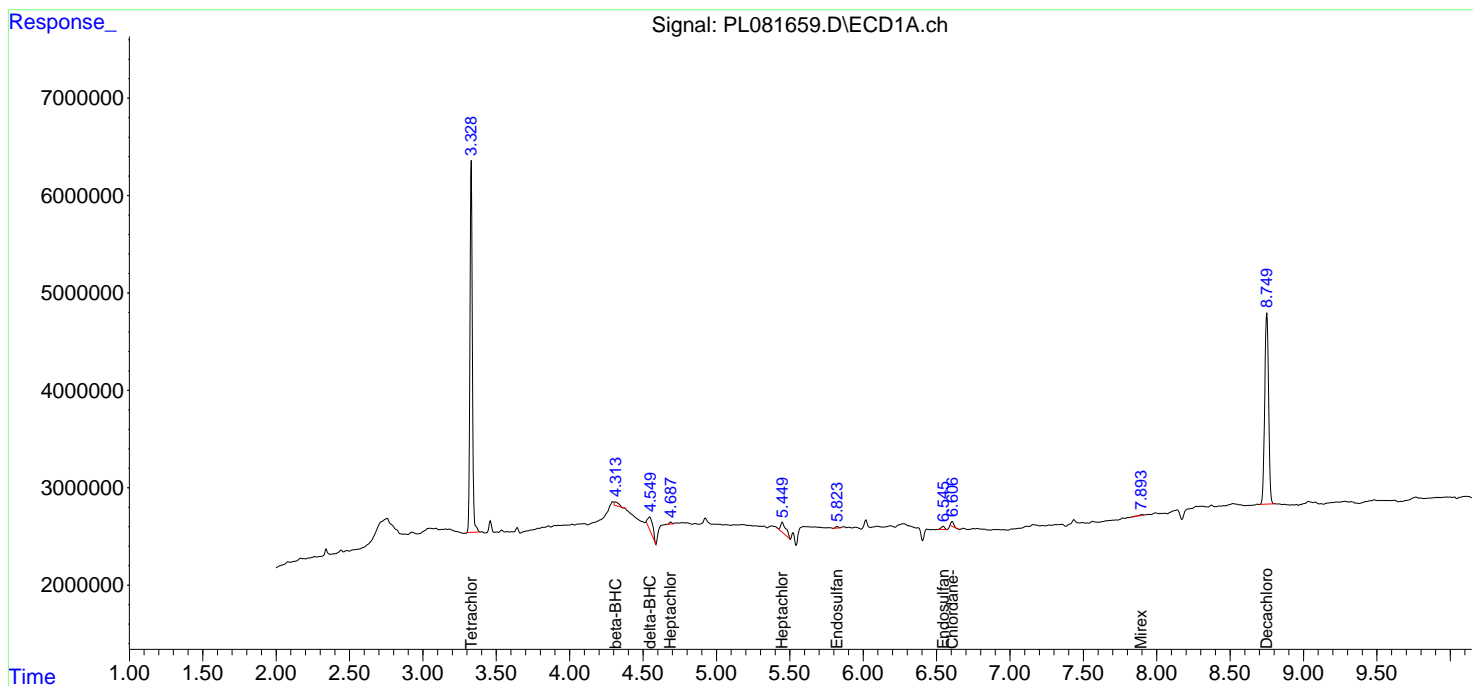
(f)=RT Delta > 1/2 Window (#)=Amounts differ by > 25% (m)=manual int.

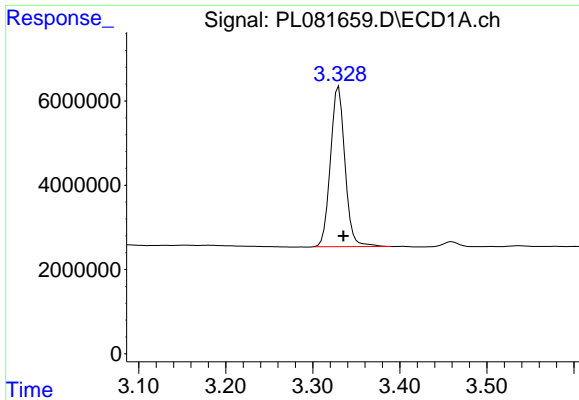
Data Path : Z:\pestpcbsrv\HPCHEM1\ECD_L\Data\PL032223\
 Data File : PL081659.D
 Signal(s) : Signal #1: ECD1A.ch Signal #2: ECD2B.ch
 Acq On : 23 Mar 2023 09:12
 Operator : AR\AJ
 Sample : I.BLK
 Misc :
 ALS Vial : 2 Sample Multiplier: 1

Instrument :
 ECD_L
 ClientSampleId :
 I.BLK

Integration File signal 1: autoint1.e
 Integration File signal 2: autoint2.e
 Quant Time: Mar 23 10:41:45 2023
 Quant Method : Z:\pestpcbsrv\HPCHEM1\ECD_L\methods\PL032223.M
 Quant Title : GC Extractables
 QLast Update : Thu Mar 23 01:07:33 2023
 Response via : Initial Calibration
 Integrator: ChemStation

Volume Inj. : 1 µl
 Signal #1 Phase : ZB-MR2 Signal #2 Phase: ZB-MR1
 Signal #1 Info : 30M x 0.32mm x0.2 Signal #2 Info : 30M x 0.32mm x0.5µm

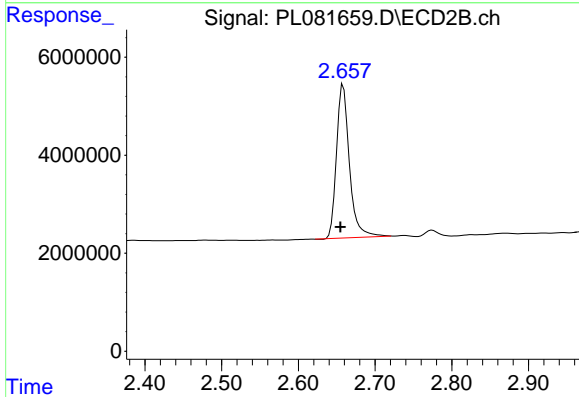




#1 Tetrachloro-m-xylene

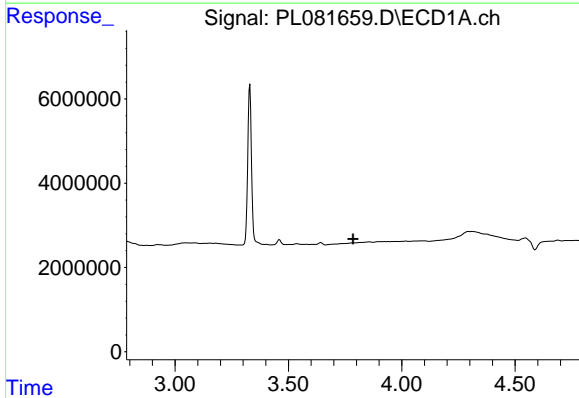
R.T.: 3.330 min
 Delta R.T.: -0.005 min
 Response: 43984990
 Conc: 18.91 ng/ml

Instrument :
 ECD_L
 ClientSampleId :
 I.BLK



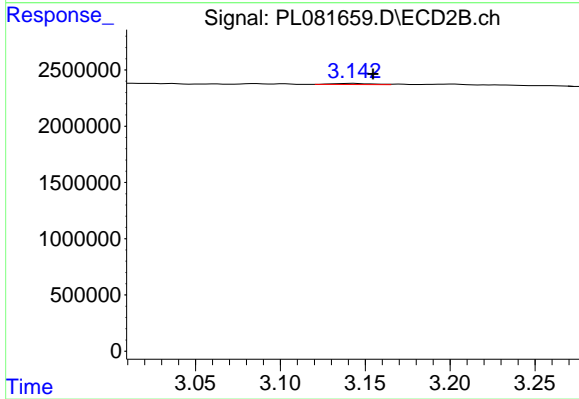
#1 Tetrachloro-m-xylene

R.T.: 2.659 min
 Delta R.T.: 0.004 min
 Response: 36809100
 Conc: 18.44 ng/ml



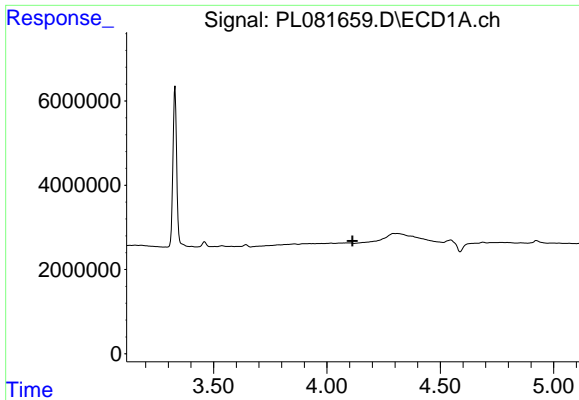
#2 alpha-BHC

R.T.: 0.000 min
 Exp R.T. : 3.785 min
 Response: 0
 Conc: N.D.



#2 alpha-BHC

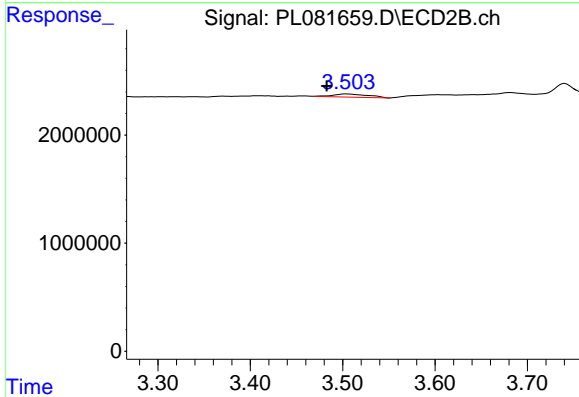
R.T.: 3.143 min
 Delta R.T.: -0.012 min
 Response: 155070
 Conc: 0.05 ng/ml



#3 gamma-BHC (Lindane)

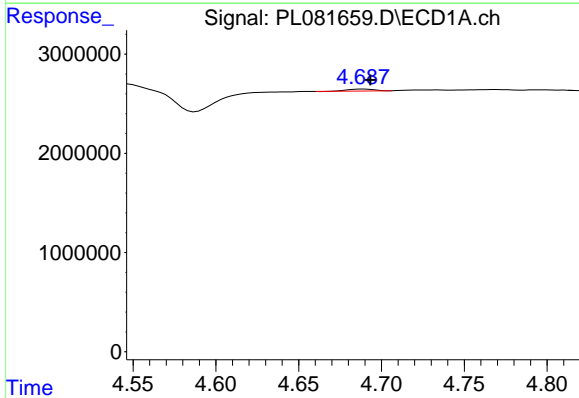
R.T.: 0.000 min
 Exp R.T.: 4.113 min
 Response: 0
 Conc: N.D.

Instrument :
 ECD_L
 ClientSampleId :
 I.BLK



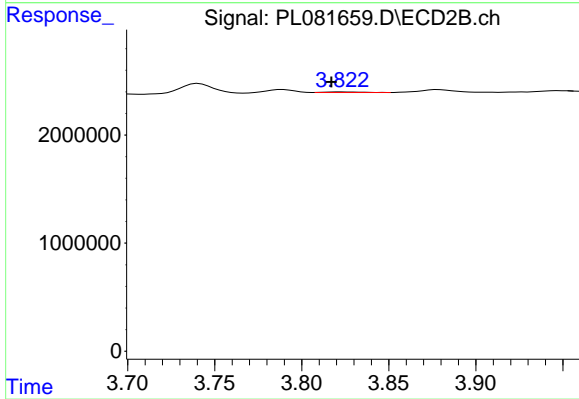
#3 gamma-BHC (Lindane)

R.T.: 3.505 min
 Delta R.T.: 0.022 min
 Response: 789546
 Conc: 0.28 ng/ml



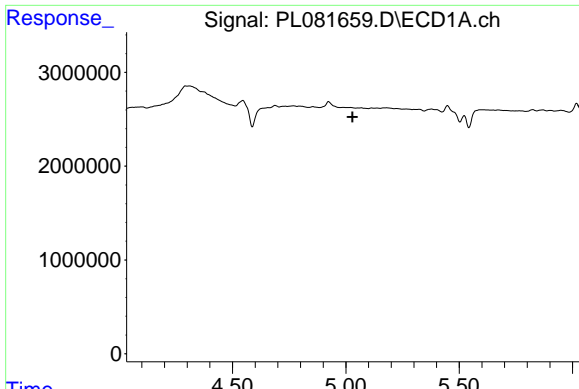
#4 Heptachlor

R.T.: 4.689 min
 Delta R.T.: -0.004 min
 Response: 215092
 Conc: 0.07 ng/ml



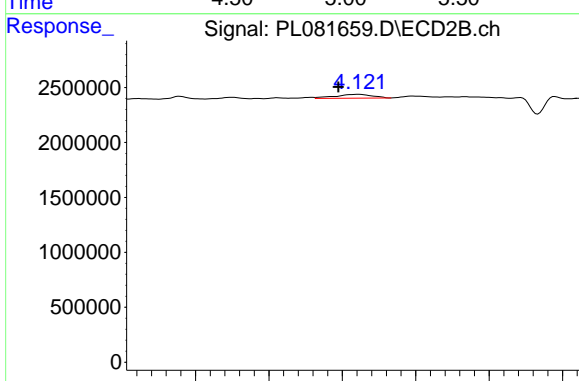
#4 Heptachlor

R.T.: 3.823 min
 Delta R.T.: 0.006 min
 Response: 72561
 Conc: 0.03 ng/ml

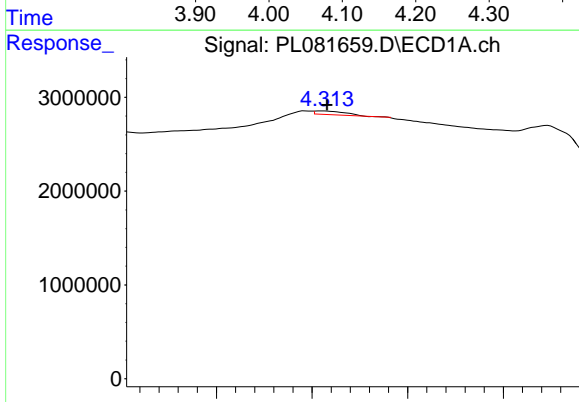


#5 Aldrin
 R.T.: 0.000 min
 Exp R.T.: 5.030 min
 Response: 0
 Conc: N.D.

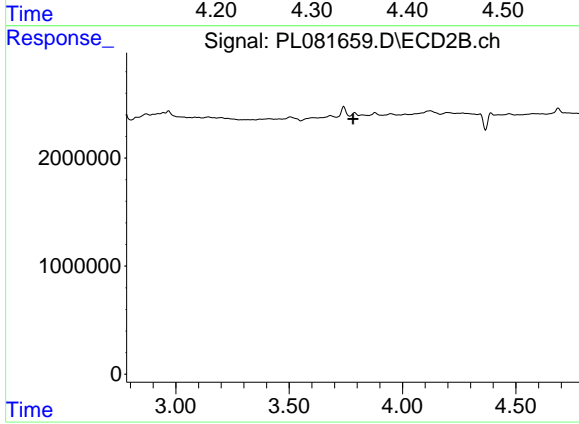
Instrument : ECD_L
 ClientSampleId : I.BLK



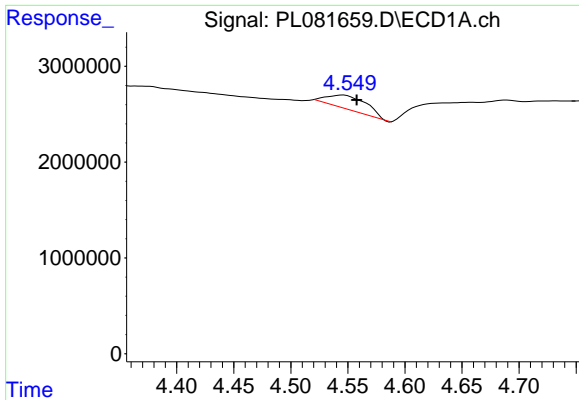
#5 Aldrin
 R.T.: 4.122 min
 Delta R.T.: 0.028 min
 Response: 1224199
 Conc: 0.46 ng/ml



#6 beta-BHC
 R.T.: 4.312 min
 Delta R.T.: -0.004 min
 Response: 846945
 Conc: 0.56 ng/ml



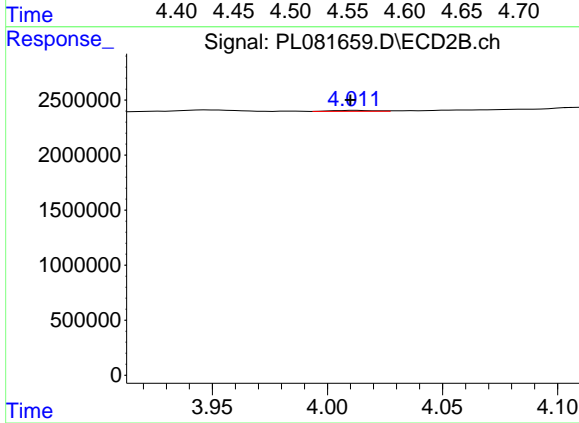
#6 beta-BHC
 R.T.: 3.789 min
 Delta R.T.: 0.007 min
 Response: -69574
 Conc: N.D.



#7 delta-BHC

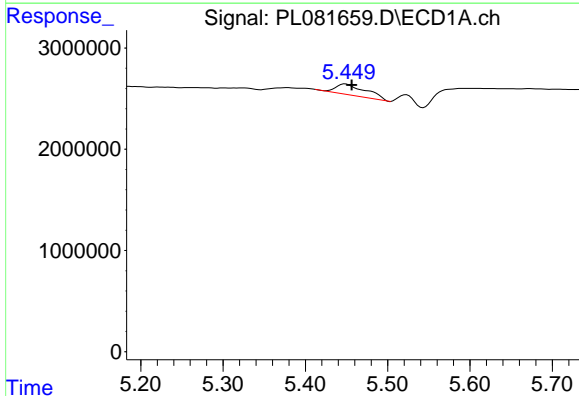
R.T.: 4.546 min
 Delta R.T.: -0.012 min
 Response: 3487980
 Conc: 1.15 ng/ml

Instrument :
 ECD_L
 ClientSampleId :
 I.BLK



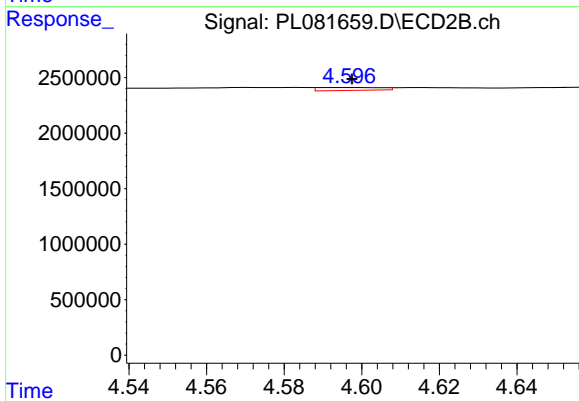
#7 delta-BHC

R.T.: 4.012 min
 Delta R.T.: 0.002 min
 Response: 96928
 Conc: 0.04 ng/ml



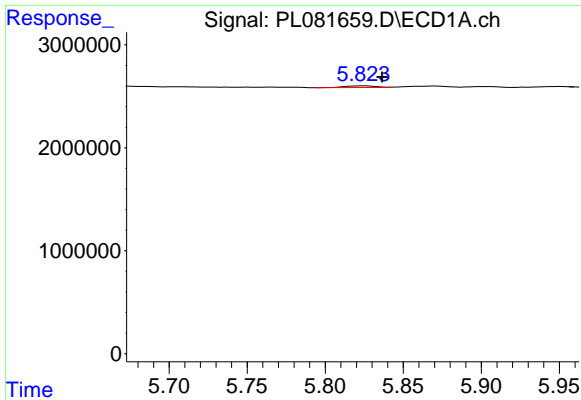
#8 Heptachlor epoxide

R.T.: 5.449 min
 Delta R.T.: -0.008 min
 Response: 2827553
 Conc: 1.04 ng/ml



#8 Heptachlor epoxide

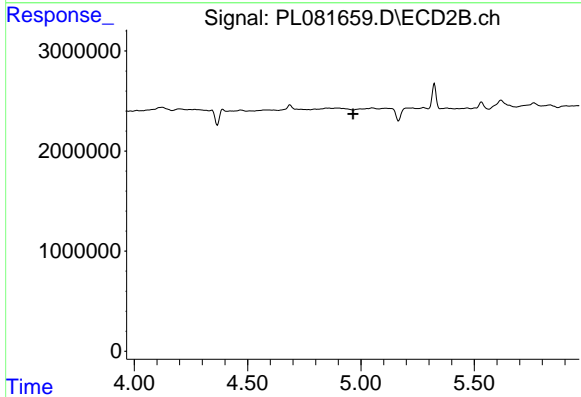
R.T.: 4.598 min
 Delta R.T.: 0.000 min
 Response: 296039
 Conc: 0.12 ng/ml



#9 Endosulfan I

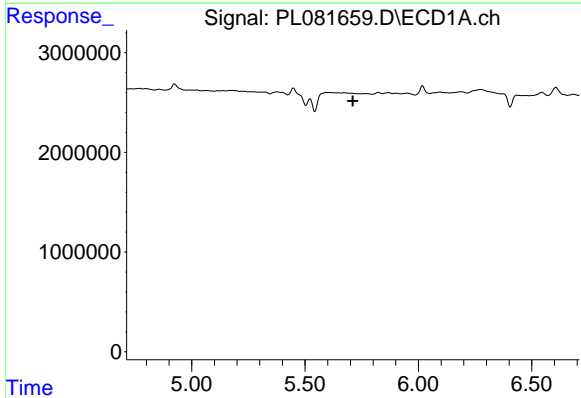
R.T.: 5.824 min
 Delta R.T.: -0.012 min
 Response: 222132
 Conc: 0.09 ng/ml

Instrument :
 ECD_L
 ClientSampleId :
 I.BLK



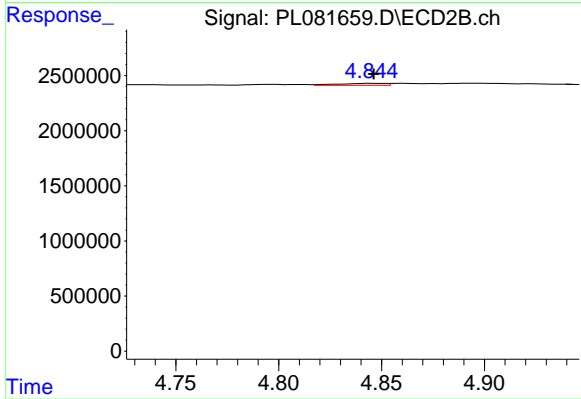
#9 Endosulfan I

R.T.: 0.000 min
 Exp R.T. : 4.966 min
 Response: 0
 Conc: N.D.



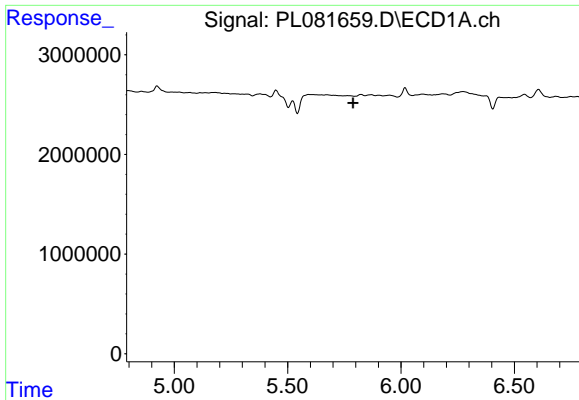
#10 gamma-Chlordane

R.T.: 0.000 min
 Exp R.T. : 5.710 min
 Response: 0
 Conc: N.D.



#10 gamma-Chlordane

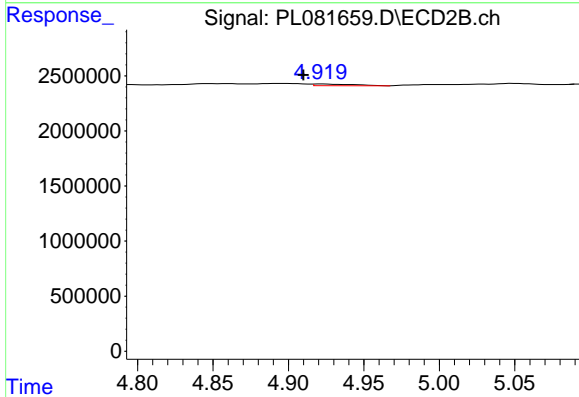
R.T.: 4.847 min
 Delta R.T.: 0.000 min
 Response: 281440
 Conc: 0.12 ng/ml



#11 alpha-Chlordane

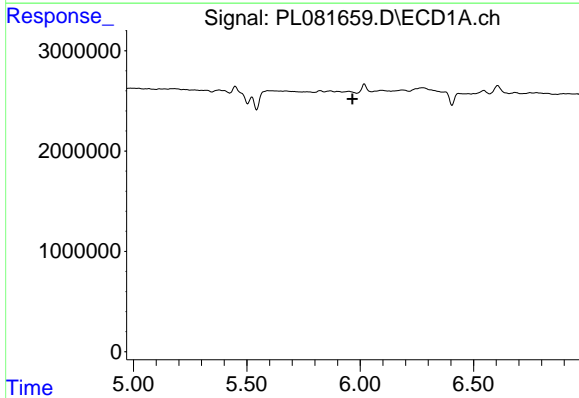
R.T.: 0.000 min
 Exp R.T.: 5.788 min
 Response: 0
 Conc: N.D.

Instrument :
 ECD_L
 ClientSampleId :
 I.BLK



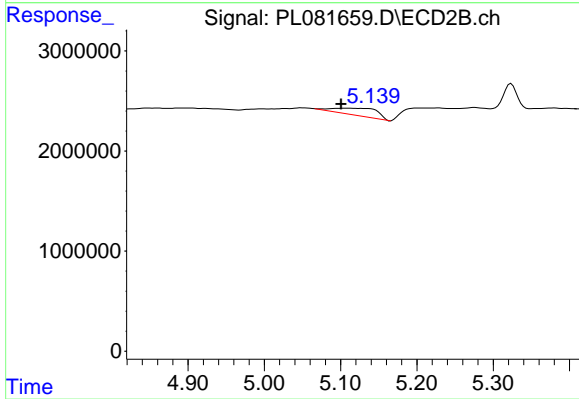
#11 alpha-Chlordane

R.T.: 4.922 min
 Delta R.T.: 0.012 min
 Response: 283273
 Conc: 0.12 ng/ml



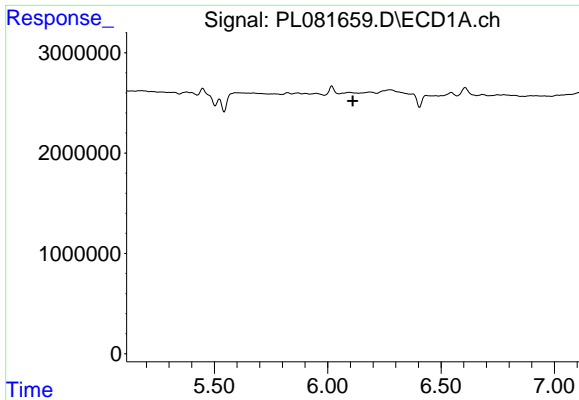
#12 4,4'-DDE

R.T.: 0.000 min
 Exp R.T.: 5.967 min
 Response: 0
 Conc: N.D.



#12 4,4'-DDE

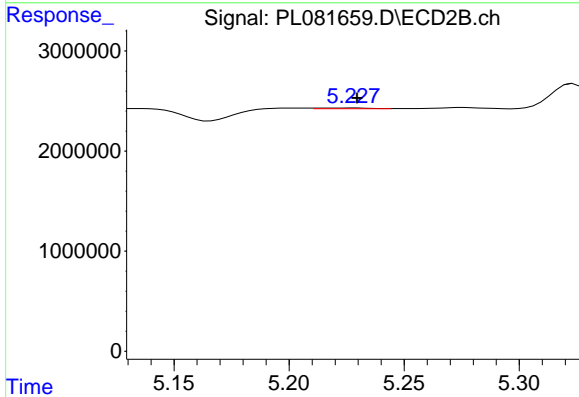
R.T.: 5.113 min
 Delta R.T.: 0.012 min
 Response: 2888070
 Conc: 1.47 ng/ml



#13 Dieldrin

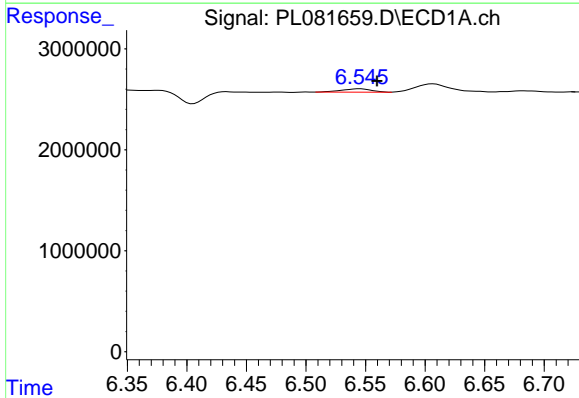
R.T.: 0.000 min
 Exp R.T.: 6.111 min
 Response: 0
 Conc: N.D.

Instrument :
 ECD_L
 ClientSampleId :
 I.BLK



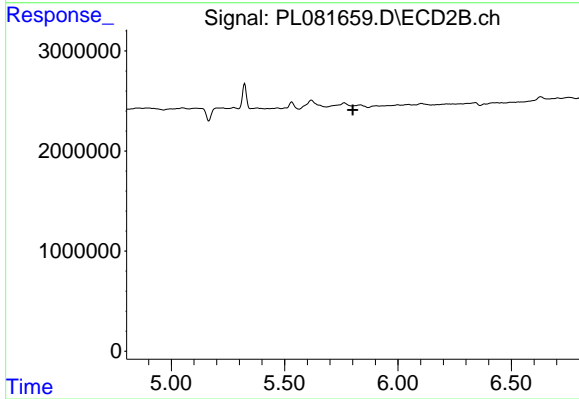
#13 Dieldrin

R.T.: 5.228 min
 Delta R.T.: -0.001 min
 Response: 110429
 Conc: 0.05 ng/ml



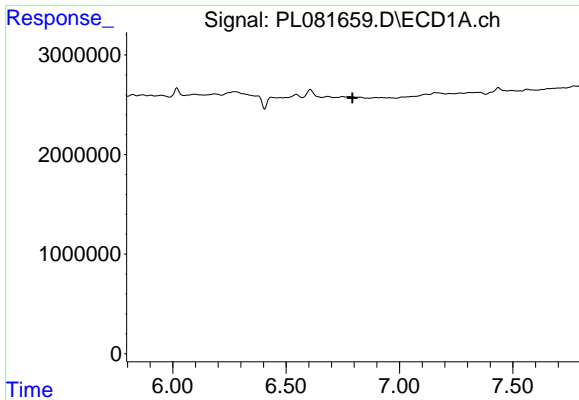
#15 Endosulfan II

R.T.: 6.546 min
 Delta R.T.: -0.014 min
 Response: 578218
 Conc: 0.27 ng/ml



#15 Endosulfan II

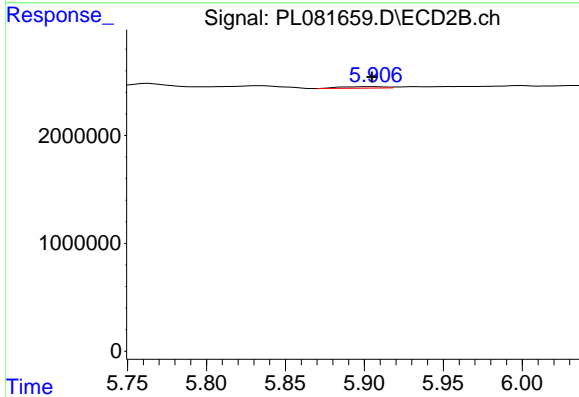
R.T.: 0.000 min
 Exp R.T.: 5.801 min
 Response: 0
 Conc: N.D.



#17 4,4'-DDT

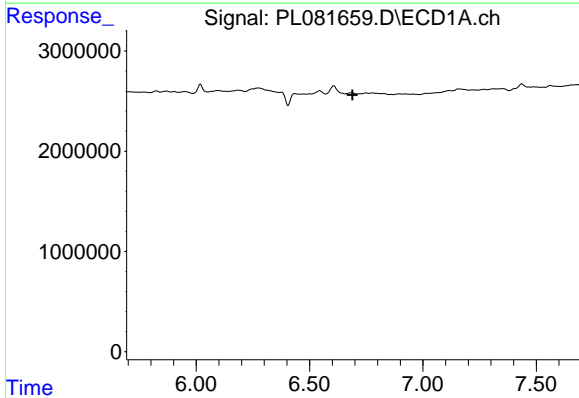
R.T.: 0.000 min
 Exp R.T.: 6.793 min
 Response: 0
 Conc: N.D.

Instrument :
 ECD_L
 ClientSampleId :
 I.BLK



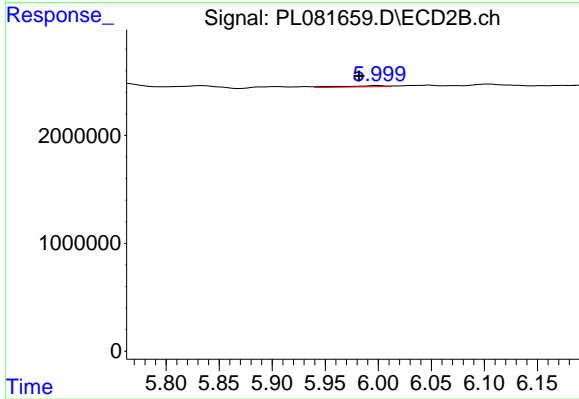
#17 4,4'-DDT

R.T.: 5.906 min
 Delta R.T.: 0.001 min
 Response: 271751
 Conc: 0.16 ng/ml



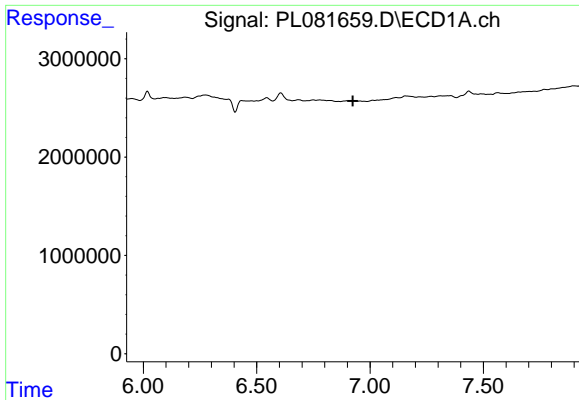
#18 Endrin aldehyde

R.T.: 0.000 min
 Exp R.T.: 6.690 min
 Response: 0
 Conc: N.D.



#18 Endrin aldehyde

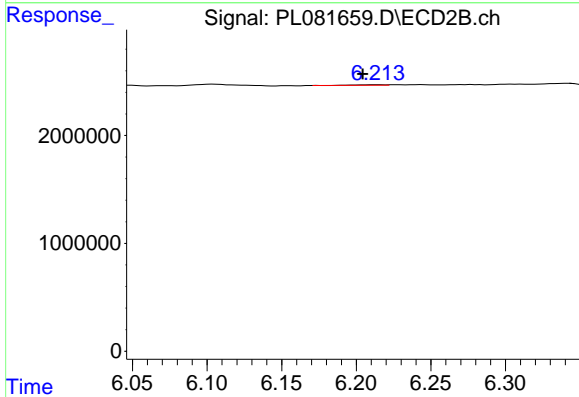
R.T.: 6.000 min
 Delta R.T.: 0.018 min
 Response: 317996
 Conc: 0.20 ng/ml



#19 Endosulfan Sulfate

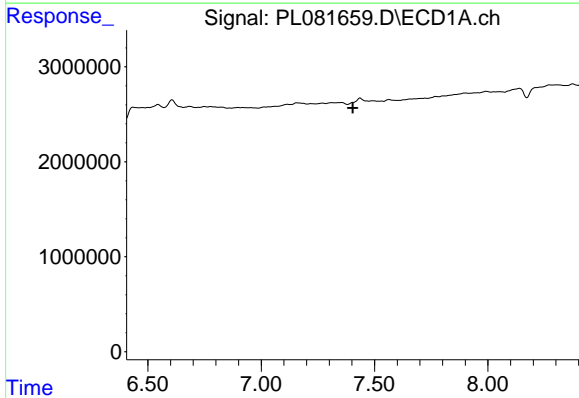
R.T.: 0.000 min
 Exp R.T.: 6.924 min
 Response: 0
 Conc: N.D.

Instrument :
 ECD_L
 ClientSampleId :
 I.BLK



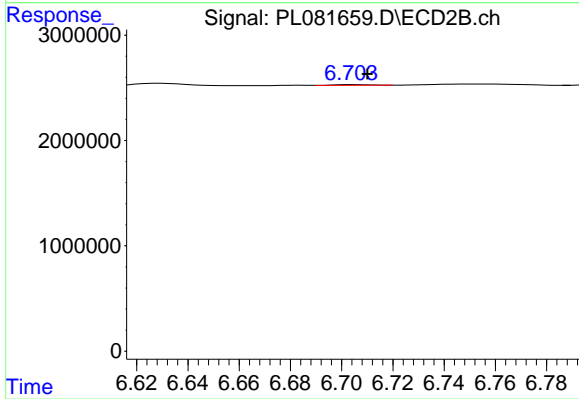
#19 Endosulfan Sulfate

R.T.: 6.215 min
 Delta R.T.: 0.010 min
 Response: 50498
 Conc: 0.03 ng/ml



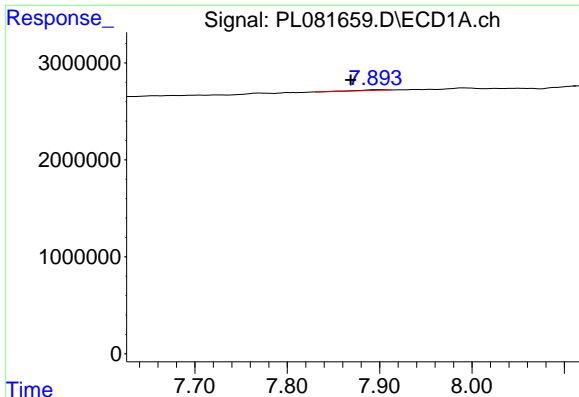
#21 Endrin ketone

R.T.: 0.000 min
 Exp R.T.: 7.404 min
 Response: 0
 Conc: N.D.



#21 Endrin ketone

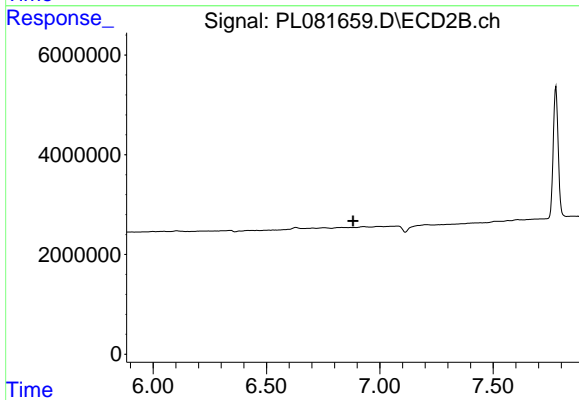
R.T.: 6.704 min
 Delta R.T.: -0.006 min
 Response: 65414
 Conc: 0.03 ng/ml



#22 Mirex

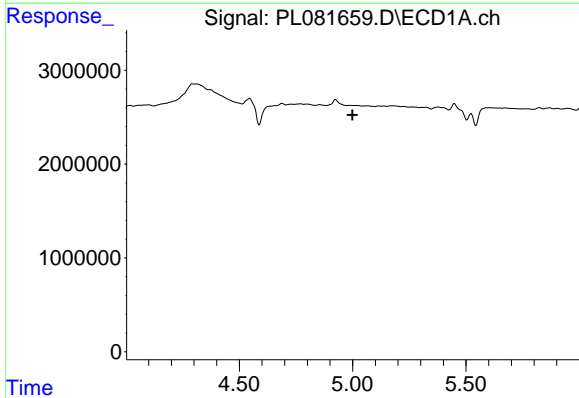
R.T.: 7.896 min
 Delta R.T.: 0.027 min
 Response: 178273
 Conc: 0.10 ng/ml

Instrument :
 ECD_L
 ClientSampleId :
 I.BLK



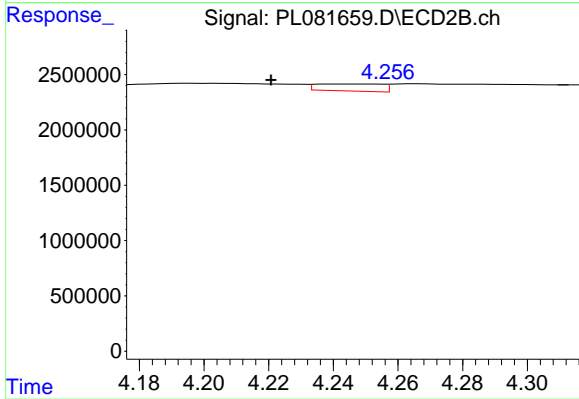
#22 Mirex

R.T.: 6.872 min
 Delta R.T.: -0.010 min
 Response: -6193
 Conc: N.D.



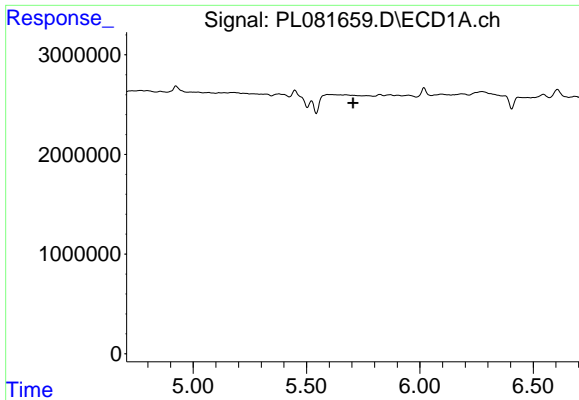
#24 Chlordane-2

R.T.: 0.000 min
 Exp R.T. : 5.000 min
 Response: 0
 Conc: N.D.



#24 Chlordane-2

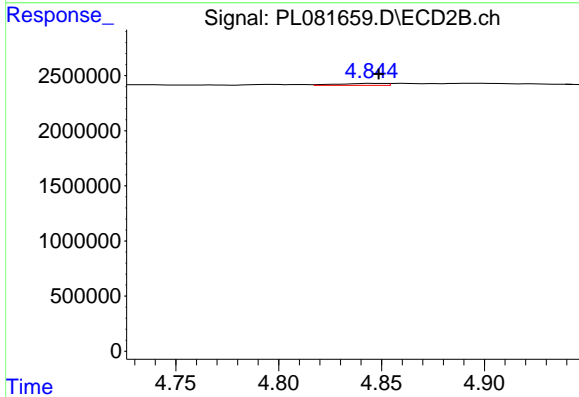
R.T.: 4.245 min
 Delta R.T.: 0.024 min
 Response: 909135
 Conc: 9.73 ng/ml



#25 Chlordane-3

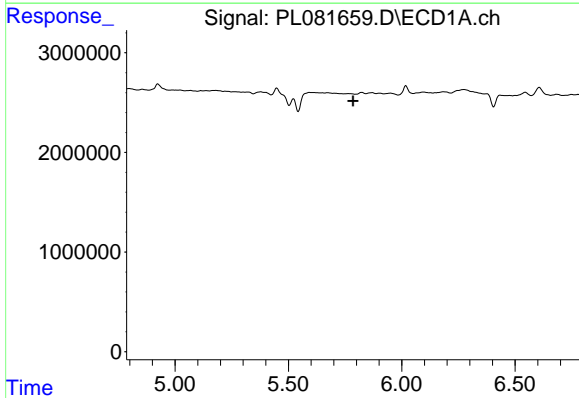
R.T.: 0.000 min
 Exp R.T.: 5.705 min
 Response: 0
 Conc: N.D.

Instrument :
 ECD_L
 ClientSampleId :
 I.BLK



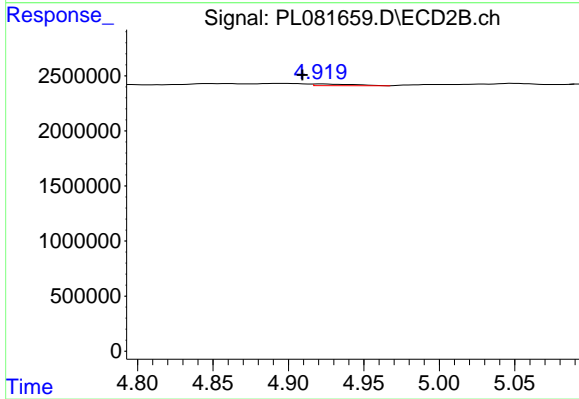
#25 Chlordane-3

R.T.: 4.847 min
 Delta R.T.: -0.002 min
 Response: 281440
 Conc: 1.12 ng/ml



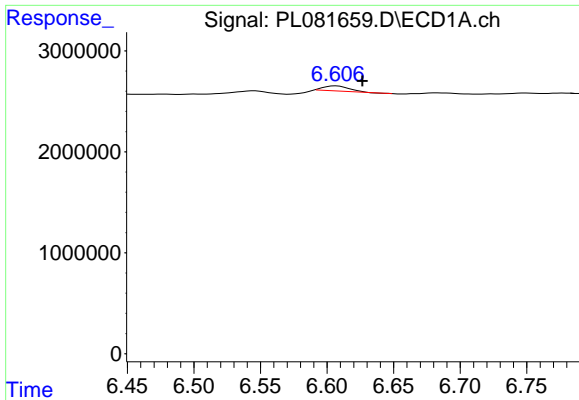
#26 Chlordane-4

R.T.: 0.000 min
 Exp R.T.: 5.786 min
 Response: 0
 Conc: N.D.



#26 Chlordane-4

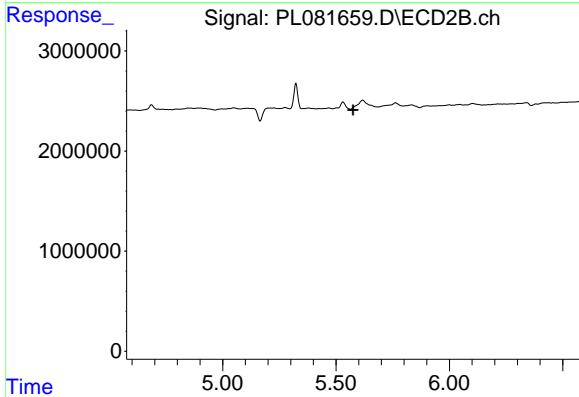
R.T.: 4.922 min
 Delta R.T.: 0.013 min
 Response: 283273
 Conc: 1.08 ng/ml



#27 Chlordane-5

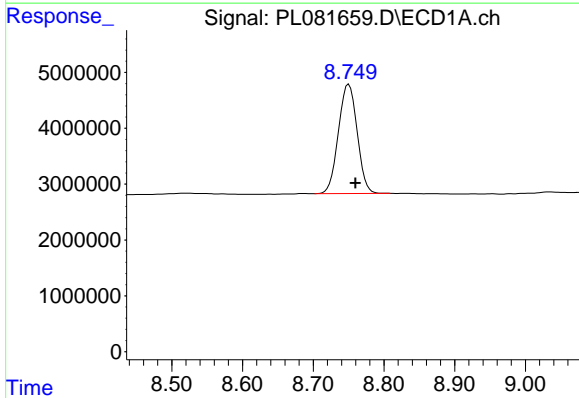
R.T.: 6.607 min
 Delta R.T.: -0.020 min
 Response: 594982
 Conc: 7.01 ng/ml

Instrument :
 ECD_L
 ClientSampleId :
 I.BLK



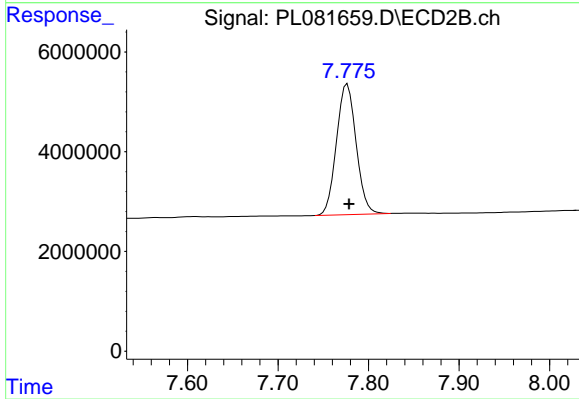
#27 Chlordane-5

R.T.: 0.000 min
 Exp R.T. : 5.575 min
 Response: 0
 Conc: N.D.



#28 Decachlorobiphenyl

R.T.: 8.750 min
 Delta R.T.: -0.009 min
 Response: 36077457
 Conc: 20.16 ng/ml



#28 Decachlorobiphenyl

R.T.: 7.777 min
 Delta R.T.: -0.002 min
 Response: 39602387
 Conc: 19.97 ng/ml