

Data Path : Z:\pestpcbsrv\HPCHEM1\ECD_L\Data\PL032319\
 Data File : PL046424.D
 Signal(s) : Signal #1: ECD1A.ch Signal #2: ECD2B.ch
 Acq On : 24 Mar 2019 08:07
 Operator : AJ\SJ
 Sample : K2015-19
 Misc :
 ALS Vial : 57 Sample Multiplier: 1

Instrument :
 ECD_L
 ClientSampleId :
 PST-073-B160-031919

Integration File signal 1: autoint1.e
 Integration File signal 2: autoint2.e
 Quant Time: Mar 25 04:48:09 2019
 Quant Method : Z:\pestpcbsrv\HPCHEM1\ECD_L\methods\PL032219.M
 Quant Title : GC Extractables
 QLast Update : Fri Mar 22 13:40:08 2019
 Response via : Initial Calibration
 Integrator: ChemStation

Volume Inj. : 1 µl
 Signal #1 Phase : ZB-MR2 Signal #2 Phase: ZB-MR1
 Signal #1 Info : 30M x 0.32mm x0.2 Signal #2 Info : 30M x 0.32mm x0.5µm

Compound	RT#1	RT#2	Resp#1	Resp#2	ng/ml	ng/ml

System Monitoring Compounds						
1) SA Tetrachlo...	3.359	3.978	74095437	23893509	10.185	10.436
28) SA Decachlor...	8.038	9.030	115.7E6	25684932	13.754	11.078
Target Compounds						
4) MA Heptachlor	4.353	5.158	17113442	3054827	1.552	0.993 #
5) MB Aldrin	4.616f	5.493f	13189894	2084637	1.279	0.728 #
7) B delta-BHC	4.508	5.039	8980631	4470524	0.887	1.927 #
8) B Heptachlo...	5.032	5.868	5673721	6204818	0.582	2.353 #
9) A Endosulfan I	5.348f	0.000	74803954	0	7.956	N.D. #
10) B gamma-Chl...	5.255	6.083	1099.7E6	502.7E6	107.050	177.123 #
11) B alpha-Chl...	5.309	6.156	2041.5E6	939.3E6	201.348	331.139 #
12) B 4,4'-DDE	5.476	6.313	57185083	26270829	6.211	10.583 #
13) MA Dieldrin	5.618	0.000	8176313	0	0.815	N.D. #
14) MA Endrin	5.859	6.706f	-199722	5508939	N.D.	2.305
15) B Endosulfa...	6.134	6.899	632.0E6	1171633	70.540	0.486 #
17) MA 4,4'-DDT	6.222	7.100	107.5E6	23006930	14.199	10.972
18) B Endrin al...	6.322f	7.027	39963120	5043654	5.332	2.375 #
19) B Endosulfa...	0.000	7.233	0	12985547	N.D.	5.505 #
23) Chlordane-1	4.205	4.970	118.7E6	34920154	353.028	322.686
24) Chlordane-2	4.701	5.434	212.3E6	55515562	559.668	475.267
25) Chlordane-3	5.255	6.083	1099.7E6	502.7E6	987.440	1318.473 #
26) Chlordane-4	5.309	6.156	2041.5E6	939.3E6	1974.234	2035.717
27) Chlordane-5	6.134	6.960	632.0E6	169.0E6	1851.959	1880.768

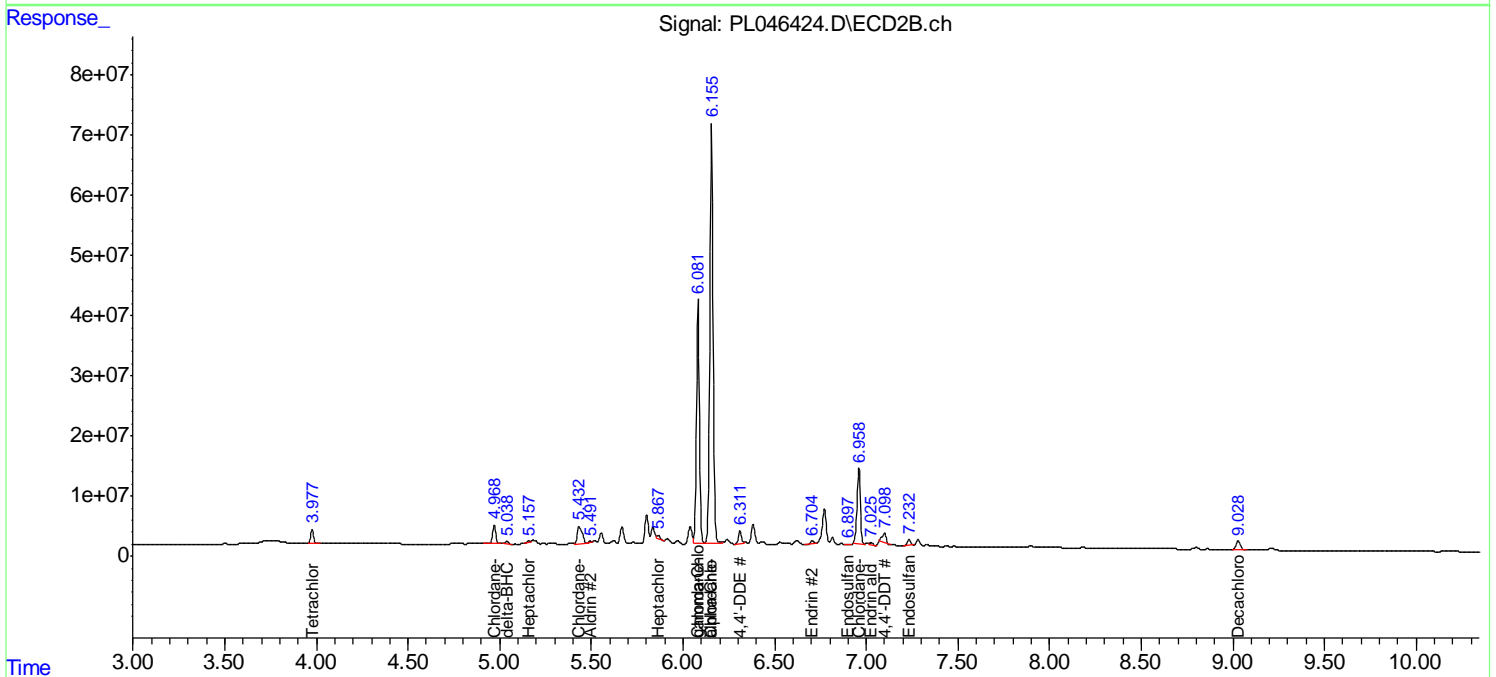
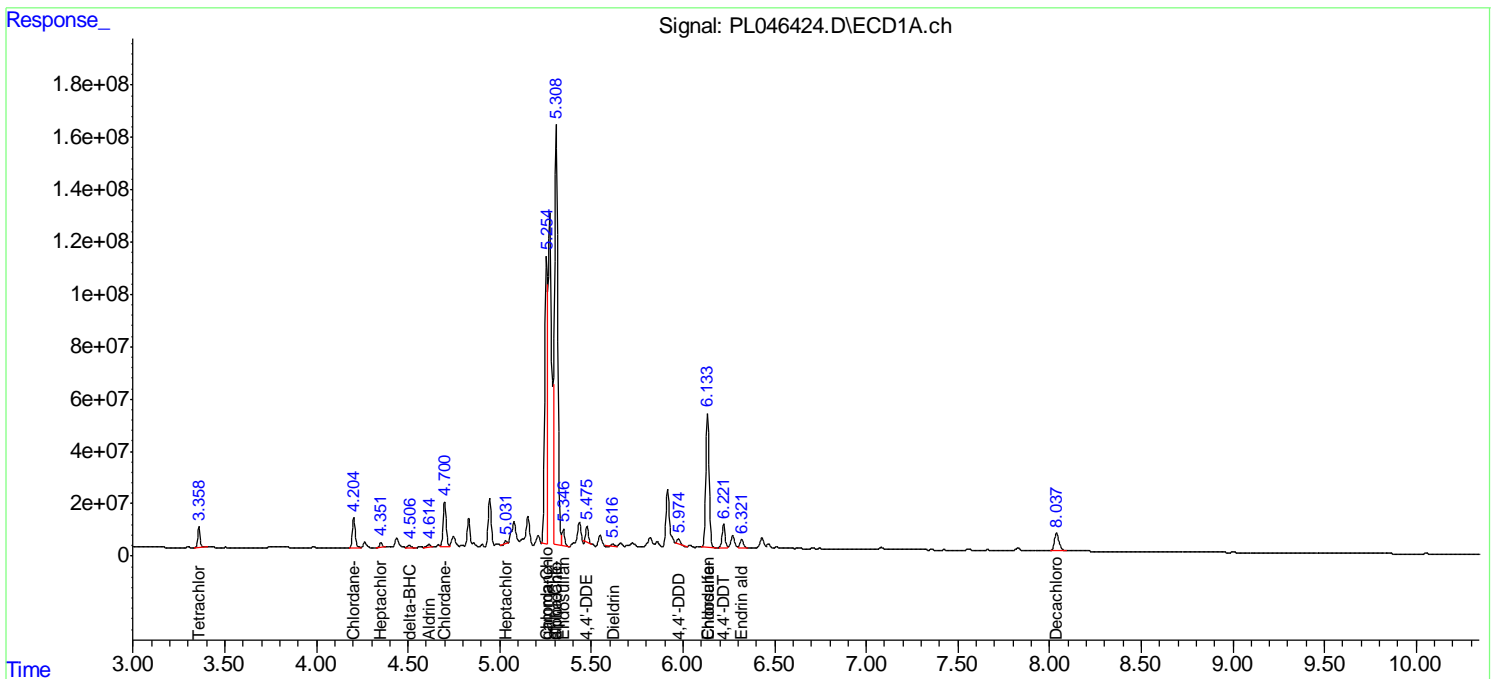
(f)=RT Delta > 1/2 Window (#)=Amounts differ by > 25% (m)=manual int.

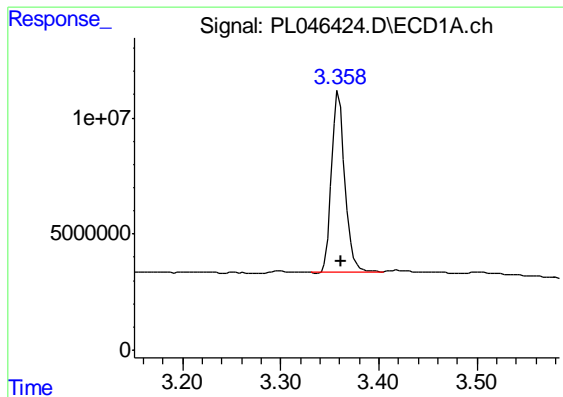
Data Path : Z:\pestpcbsrv\HPCHEM1\ECD_L\Data\PL032319\
 Data File : PL046424.D
 Signal(s) : Signal #1: ECD1A.ch Signal #2: ECD2B.ch
 Acq On : 24 Mar 2019 08:07
 Operator : AJ\SJ
 Sample : K2015-19
 Misc :
 ALS Vial : 57 Sample Multiplier: 1

Instrument :
 ECD_L
Client Sampled :
 PST-073-B160-031919

Integration File signal 1: autoint1.e
 Integration File signal 2: autoint2.e
 Quant Time: Mar 25 04:48:09 2019
 Quant Method : Z:\pestpcbsrv\HPCHEM1\ECD_L\methods\PL032219.M
 Quant Title : GC Extractables
 QLast Update : Fri Mar 22 13:40:08 2019
 Response via : Initial Calibration
 Integrator: ChemStation

Volume Inj. : 1 µl
 Signal #1 Phase : ZB-MR2 Signal #2 Phase: ZB-MR1
 Signal #1 Info : 30M x 0.32mm x0.2 Signal #2 Info : 30M x 0.32mm x0.5µm

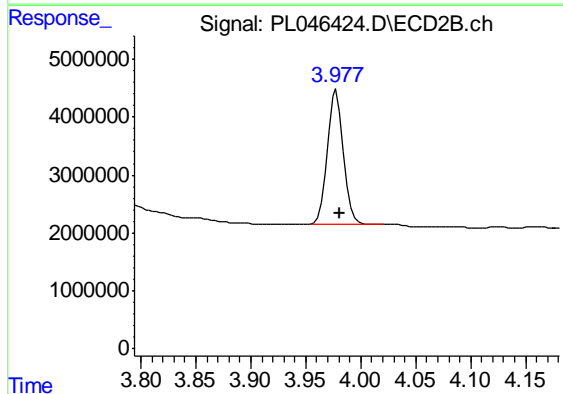




#1 Tetrachloro-m-xylene

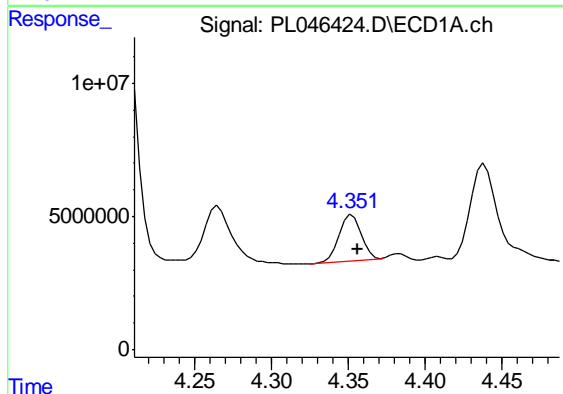
R.T.: 3.359 min
 Delta R.T.: -0.002 min
 Response: 74095437
 Conc: 10.19 ng/ml

Instrument :
 ECD_L
 ClientSampleId :
 PST-073-B160-031919



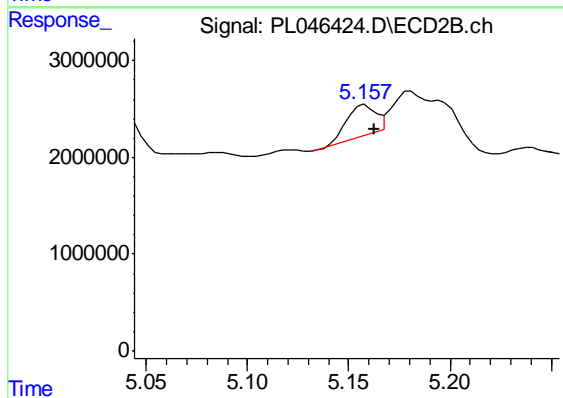
#1 Tetrachloro-m-xylene

R.T.: 3.978 min
 Delta R.T.: -0.003 min
 Response: 23893509
 Conc: 10.44 ng/ml



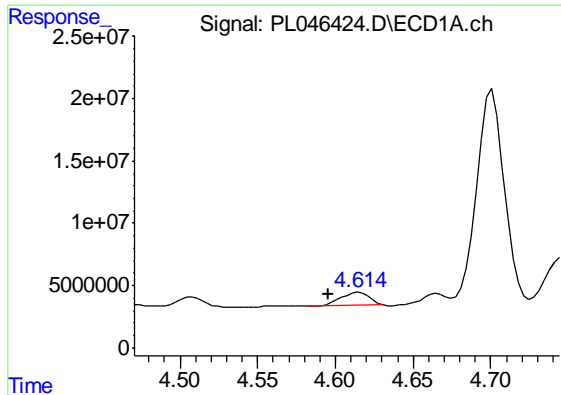
#4 Heptachlor

R.T.: 4.353 min
 Delta R.T.: -0.003 min
 Response: 17113442
 Conc: 1.55 ng/ml



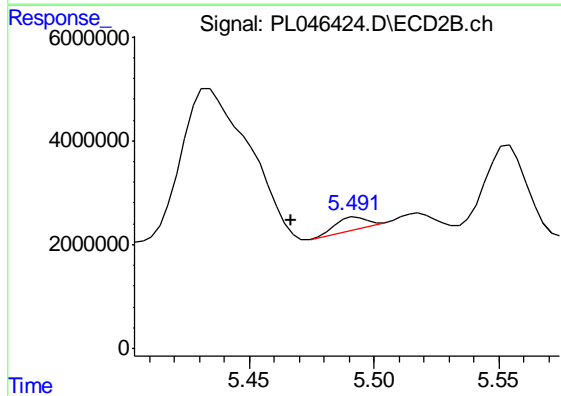
#4 Heptachlor

R.T.: 5.158 min
 Delta R.T.: -0.004 min
 Response: 3054827
 Conc: 0.99 ng/ml

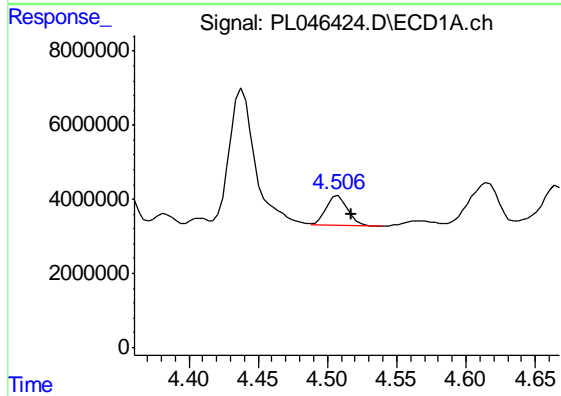


#5 Aldrin
 R.T.: 4.616 min
 Delta R.T.: 0.020 min
 Response: 13189894
 Conc: 1.28 ng/ml

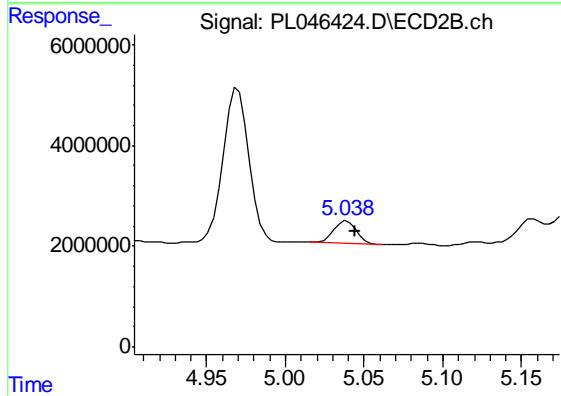
Instrument :
 ECD_L
 ClientSampleId :
 PST-073-B160-031919



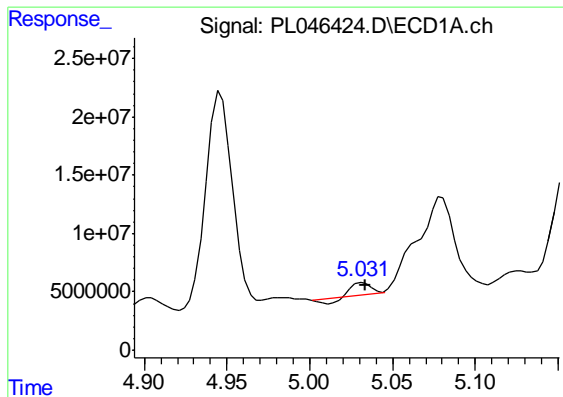
#5 Aldrin
 R.T.: 5.493 min
 Delta R.T.: 0.026 min
 Response: 2084637
 Conc: 0.73 ng/ml



#7 delta-BHC
 R.T.: 4.508 min
 Delta R.T.: -0.009 min
 Response: 8980631
 Conc: 0.89 ng/ml

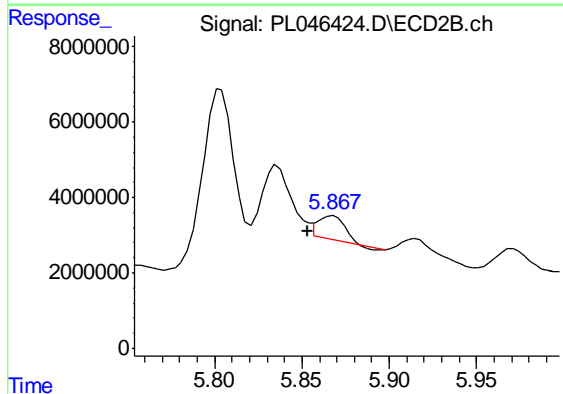


#7 delta-BHC
 R.T.: 5.039 min
 Delta R.T.: -0.005 min
 Response: 4470524
 Conc: 1.93 ng/ml

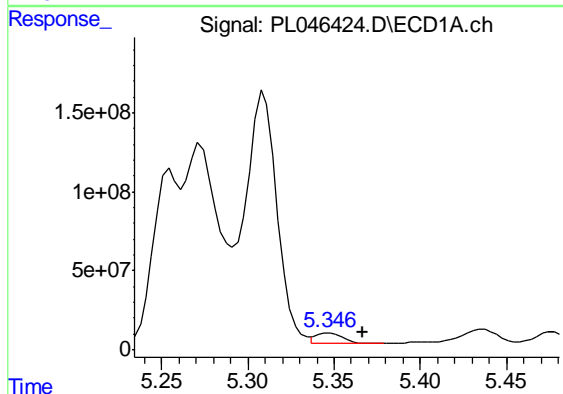


#8 Heptachlor epoxide
 R.T.: 5.032 min
 Delta R.T.: -0.002 min
 Response: 5673721
 Conc: 0.58 ng/ml

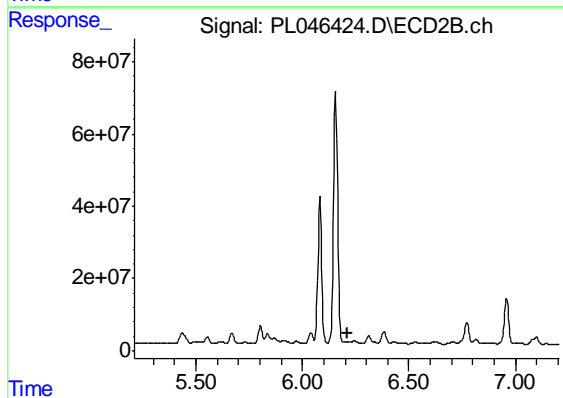
Instrument :
 ECD_L
 ClientSampleId :
 PST-073-B160-031919



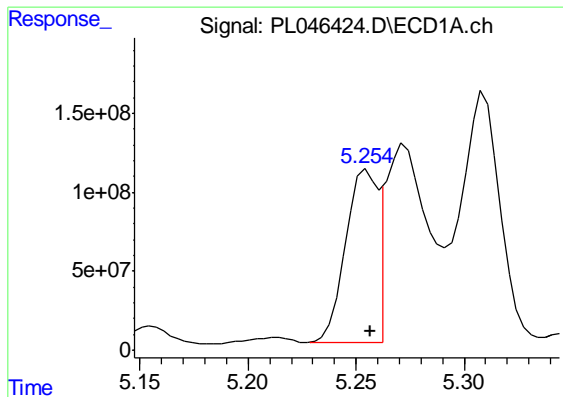
#8 Heptachlor epoxide
 R.T.: 5.868 min
 Delta R.T.: 0.014 min
 Response: 6204818
 Conc: 2.35 ng/ml



#9 Endosulfan I
 R.T.: 5.348 min
 Delta R.T.: -0.019 min
 Response: 74803954
 Conc: 7.96 ng/ml



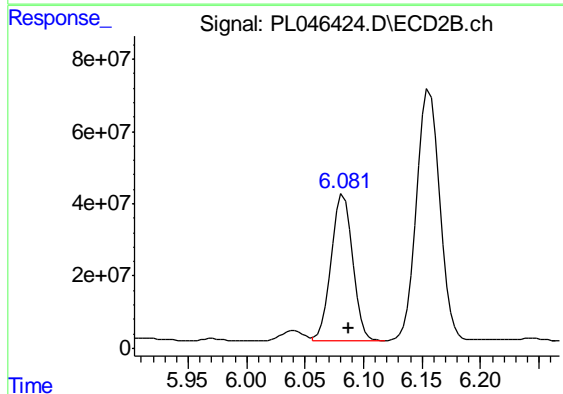
#9 Endosulfan I
 R.T.: 0.000 min
 Exp R.T. : 6.210 min
 Response: 0
 Conc: N.D.



#10 gamma-Chlordane

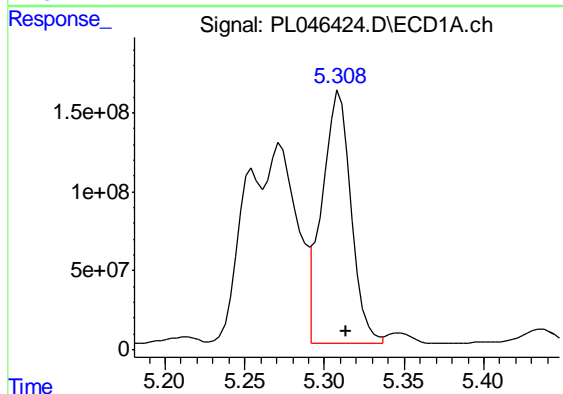
R.T.: 5.255 min
 Delta R.T.: -0.002 min
 Response: 1099685175
 Conc: 107.05 ng/ml

Instrument :
 ECD_L
 ClientSampleId :
 PST-073-B160-031919



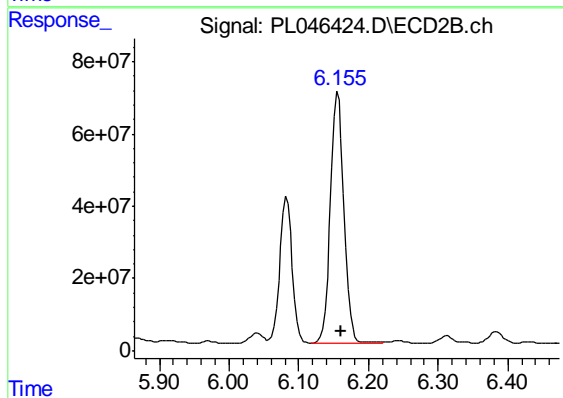
#10 gamma-Chlordane

R.T.: 6.083 min
 Delta R.T.: -0.005 min
 Response: 502691089
 Conc: 177.12 ng/ml



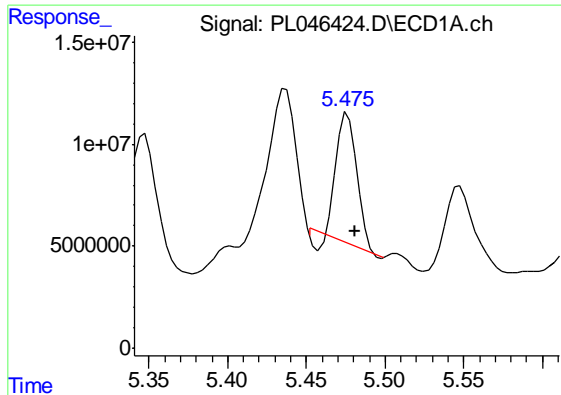
#11 alpha-Chlordane

R.T.: 5.309 min
 Delta R.T.: -0.005 min
 Response: 2041475022
 Conc: 201.35 ng/ml



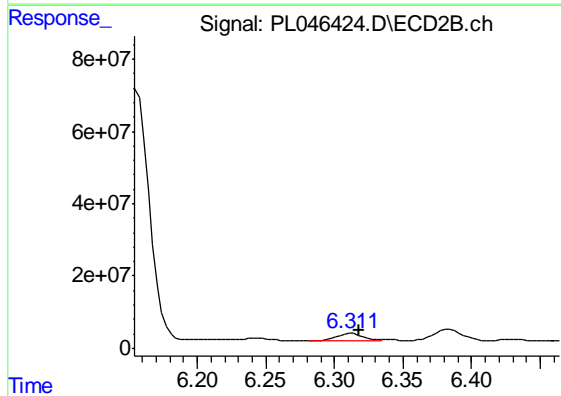
#11 alpha-Chlordane

R.T.: 6.156 min
 Delta R.T.: -0.004 min
 Response: 939330620
 Conc: 331.14 ng/ml

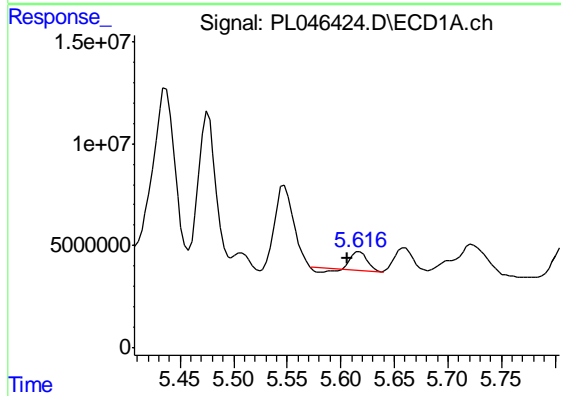


#12 4,4'-DDE
 R.T.: 5.476 min
 Delta R.T.: -0.004 min
 Response: 57185083
 Conc: 6.21 ng/ml

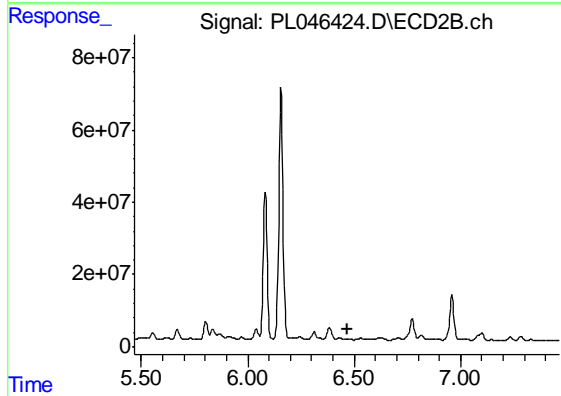
Instrument :
 ECD_L
ClientSampleId :
 PST-073-B160-031919



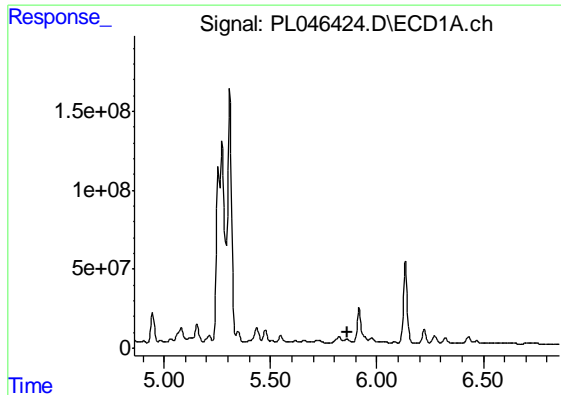
#12 4,4'-DDE
 R.T.: 6.313 min
 Delta R.T.: -0.005 min
 Response: 26270829
 Conc: 10.58 ng/ml



#13 Dieldrin
 R.T.: 5.618 min
 Delta R.T.: 0.011 min
 Response: 8176313
 Conc: 0.81 ng/ml

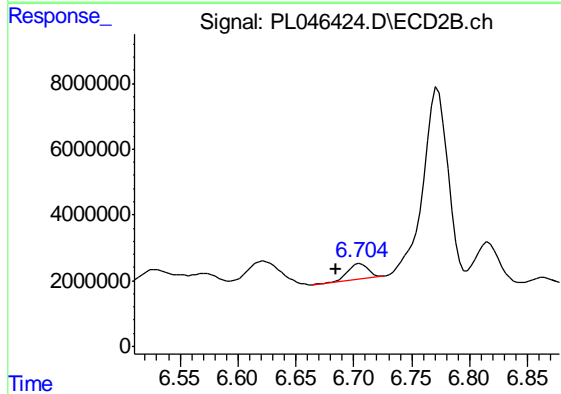


#13 Dieldrin
 R.T.: 0.000 min
 Exp R.T. : 6.467 min
 Response: 0
 Conc: N.D.

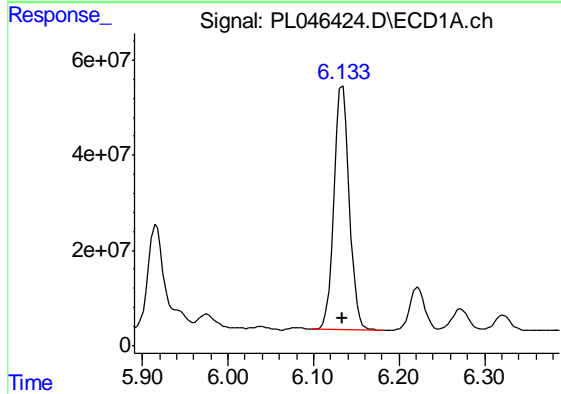


#14 Endrin
 R.T.: 5.859 min
 Delta R.T.: 0.000 min
 Response: -199722
 Conc: N.D.

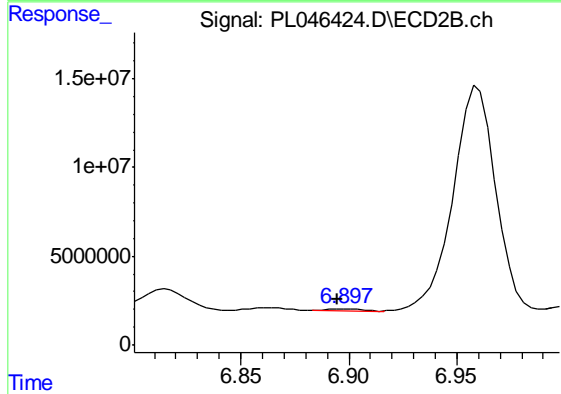
Instrument :
 ECD_L
 ClientSampleId :
 PST-073-B160-031919



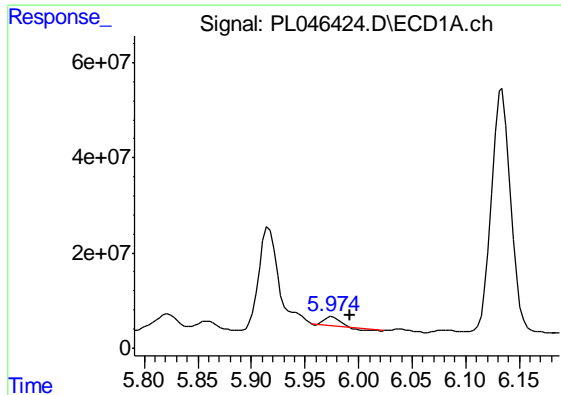
#14 Endrin
 R.T.: 6.706 min
 Delta R.T.: 0.021 min
 Response: 5508939
 Conc: 2.31 ng/ml



#15 Endosulfan II
 R.T.: 6.134 min
 Delta R.T.: 0.000 min
 Response: 632012725
 Conc: 70.54 ng/ml



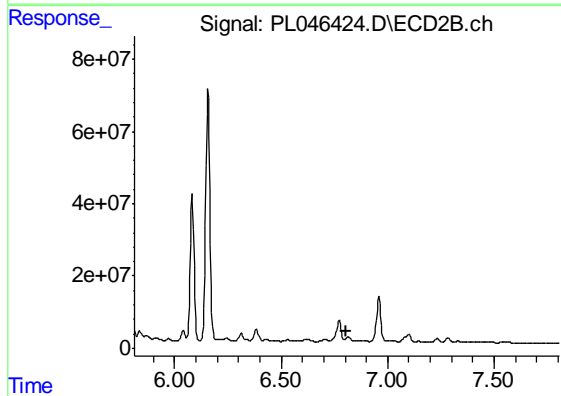
#15 Endosulfan II
 R.T.: 6.899 min
 Delta R.T.: 0.004 min
 Response: 1171633
 Conc: 0.49 ng/ml



#16 4,4'-DDD

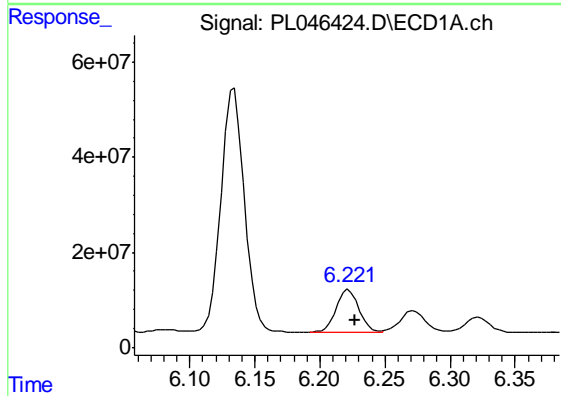
R.T.: 5.976 min
 Delta R.T.: -0.017 min
 Response: 16061811
 Conc: 2.12 ng/ml

Instrument :
 ECD_L
 ClientSampleId :
 PST-073-B160-031919



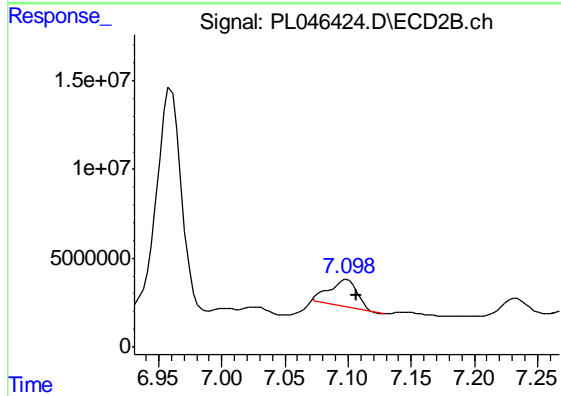
#16 4,4'-DDD

R.T.: 6.816 min
 Delta R.T.: 0.007 min
 Response: -69124297
 Conc: N.D.



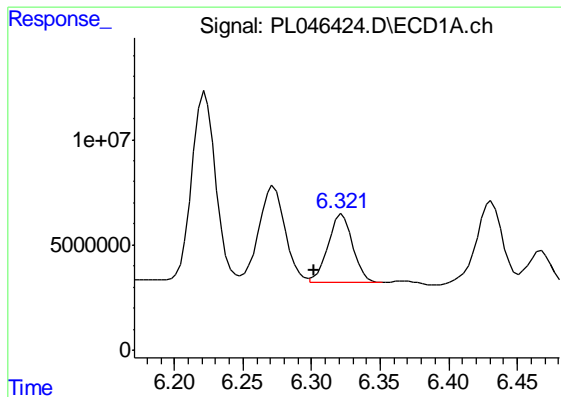
#17 4,4'-DDT

R.T.: 6.222 min
 Delta R.T.: -0.005 min
 Response: 107548723
 Conc: 14.20 ng/ml



#17 4,4'-DDT

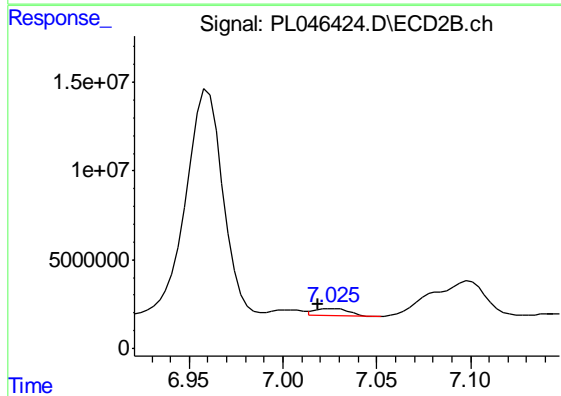
R.T.: 7.100 min
 Delta R.T.: -0.007 min
 Response: 23006930
 Conc: 10.97 ng/ml



#18 Endrin aldehyde

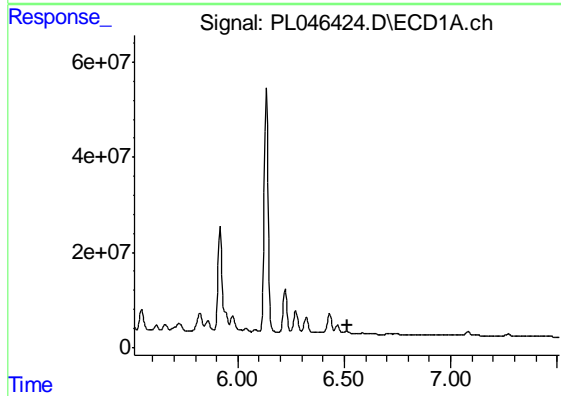
R.T.: 6.322 min
 Delta R.T.: 0.021 min
 Response: 39963120
 Conc: 5.33 ng/ml

Instrument :
 ECD_L
 ClientSampleId :
 PST-073-B160-031919



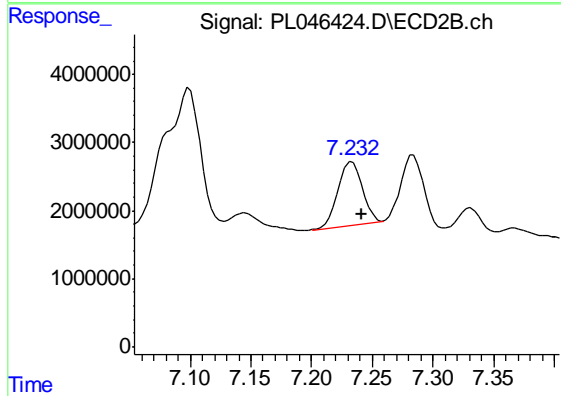
#18 Endrin aldehyde

R.T.: 7.027 min
 Delta R.T.: 0.008 min
 Response: 5043654
 Conc: 2.37 ng/ml



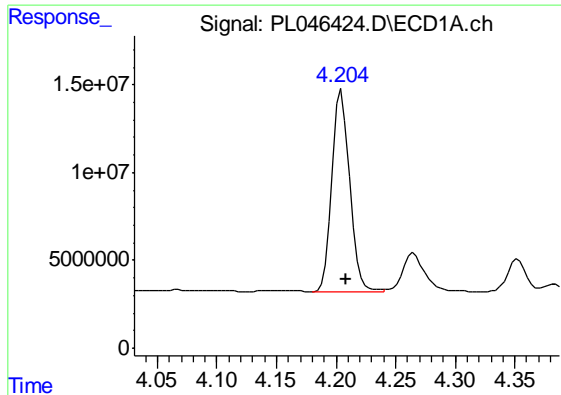
#19 Endosulfan Sulfate

R.T.: 0.000 min
 Exp R.T. : 6.513 min
 Response: 0
 Conc: N.D.



#19 Endosulfan Sulfate

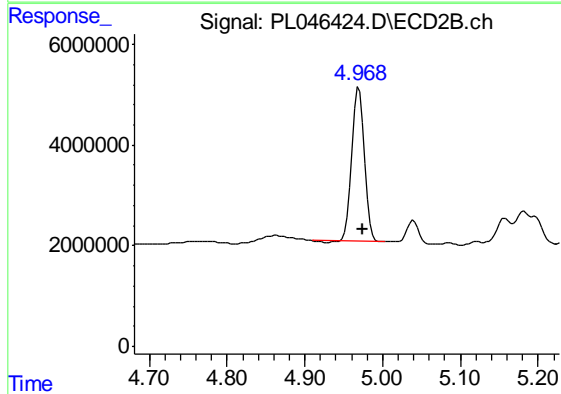
R.T.: 7.233 min
 Delta R.T.: -0.008 min
 Response: 12985547
 Conc: 5.50 ng/ml



#23 Chlordane-1

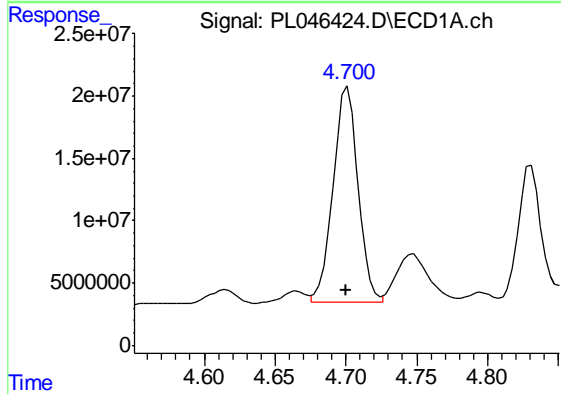
R.T.: 4.205 min
 Delta R.T.: -0.004 min
 Response: 118721787
 Conc: 353.03 ng/ml

Instrument :
 ECD_L
 ClientSampleId :
 PST-073-B160-031919



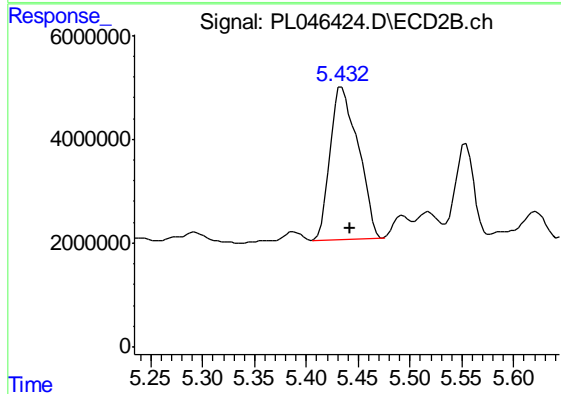
#23 Chlordane-1

R.T.: 4.970 min
 Delta R.T.: -0.005 min
 Response: 34920154
 Conc: 322.69 ng/ml



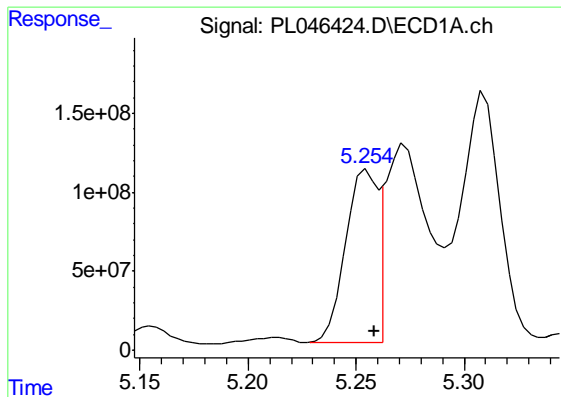
#24 Chlordane-2

R.T.: 4.701 min
 Delta R.T.: 0.000 min
 Response: 212348697
 Conc: 559.67 ng/ml



#24 Chlordane-2

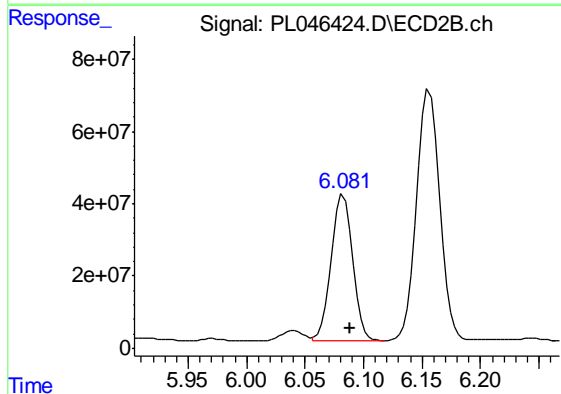
R.T.: 5.434 min
 Delta R.T.: -0.009 min
 Response: 55515562
 Conc: 475.27 ng/ml



#25 Chlordane-3

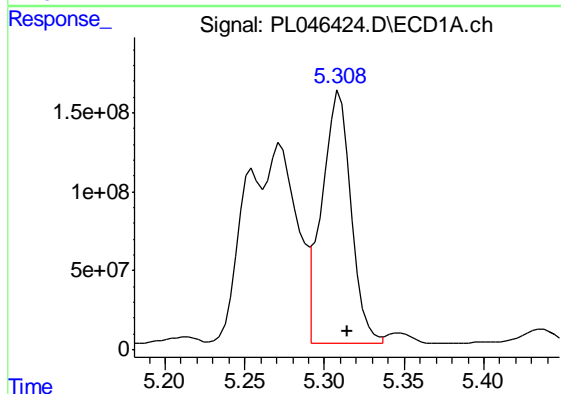
R.T.: 5.255 min
 Delta R.T.: -0.003 min
 Response: 1099685175
 Conc: 987.44 ng/ml

Instrument :
 ECD_L
 ClientSampleId :
 PST-073-B160-031919



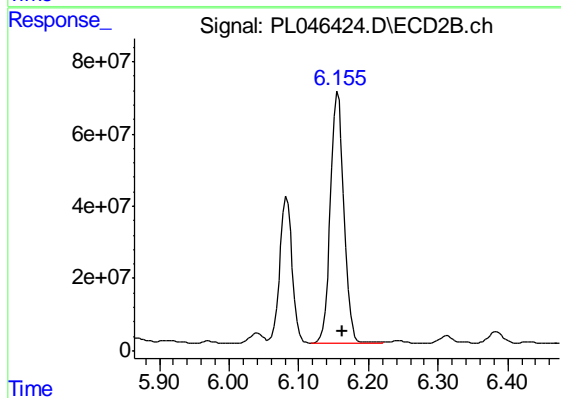
#25 Chlordane-3

R.T.: 6.083 min
 Delta R.T.: -0.006 min
 Response: 502691089
 Conc: 1318.47 ng/ml



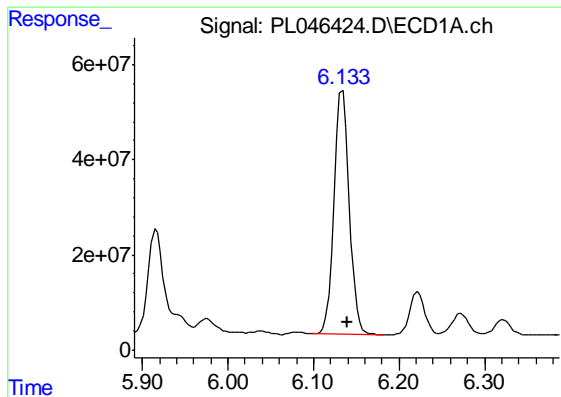
#26 Chlordane-4

R.T.: 5.309 min
 Delta R.T.: -0.005 min
 Response: 2041475022
 Conc: 1974.23 ng/ml



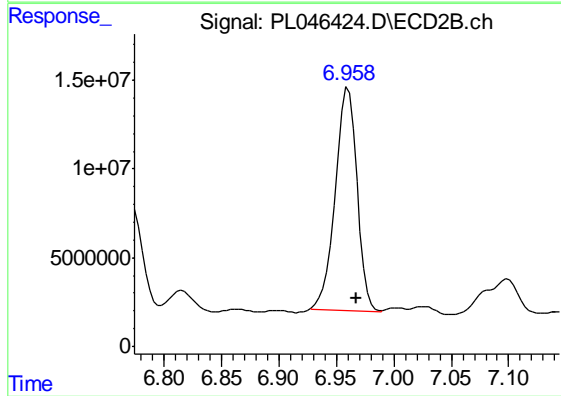
#26 Chlordane-4

R.T.: 6.156 min
 Delta R.T.: -0.007 min
 Response: 939330620
 Conc: 2035.72 ng/ml

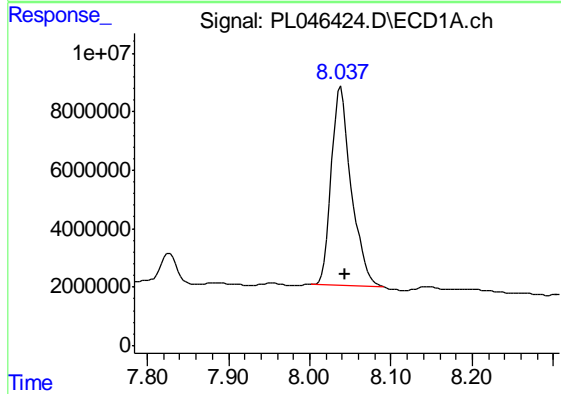


#27 Chlordane-5
 R.T.: 6.134 min
 Delta R.T.: -0.005 min
 Response: 632012725
 Conc: 1851.96 ng/ml

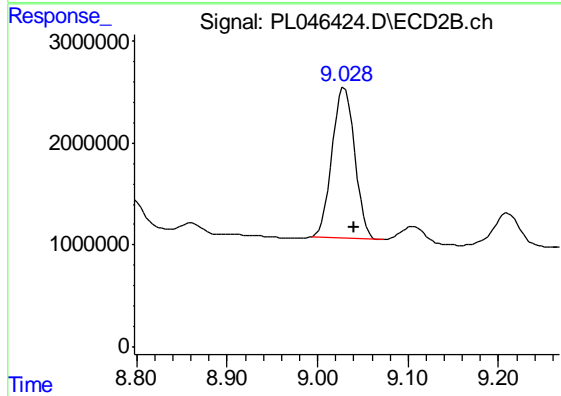
Instrument :
 ECD_L
 ClientSampleId :
 PST-073-B160-031919



#27 Chlordane-5
 R.T.: 6.960 min
 Delta R.T.: -0.008 min
 Response: 168963951
 Conc: 1880.77 ng/ml



#28 Decachlorobiphenyl
 R.T.: 8.038 min
 Delta R.T.: -0.006 min
 Response: 115681936
 Conc: 13.75 ng/ml



#28 Decachlorobiphenyl
 R.T.: 9.030 min
 Delta R.T.: -0.010 min
 Response: 25684932
 Conc: 11.08 ng/ml